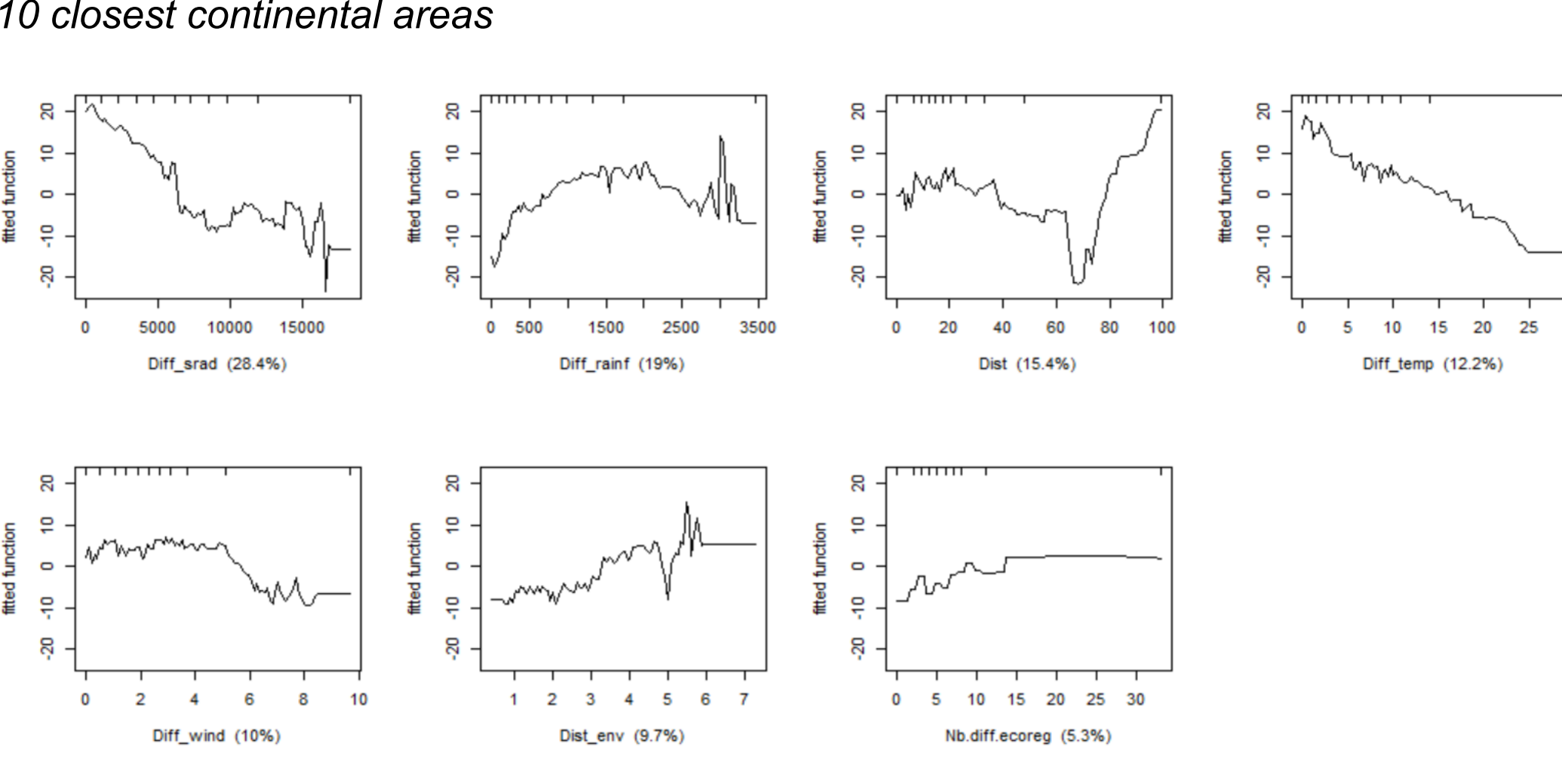


a) Oceanic islands

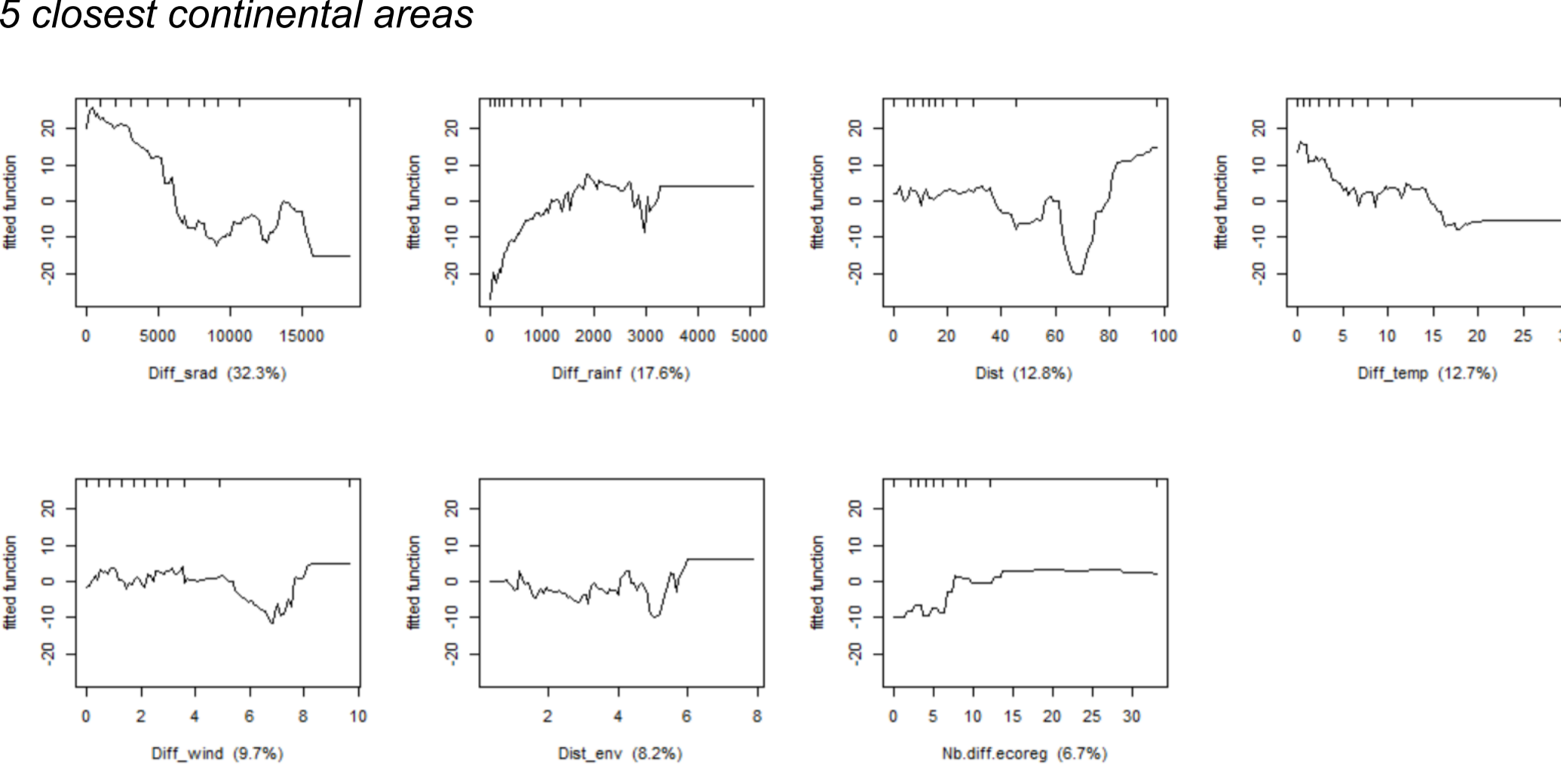
MPD_β

Dist= Spatial distance
Dist_env= Euclidean environmental distance
Diff_temp= Difference in mean annual temperature
Diff_rainf= Difference in mean annual rainfall
Diff_srad= Difference in mean annual solar radiation
Diff_wind= Difference in mean annual wind speed
Nb.diff.ecoreg= Number of different ecoregions

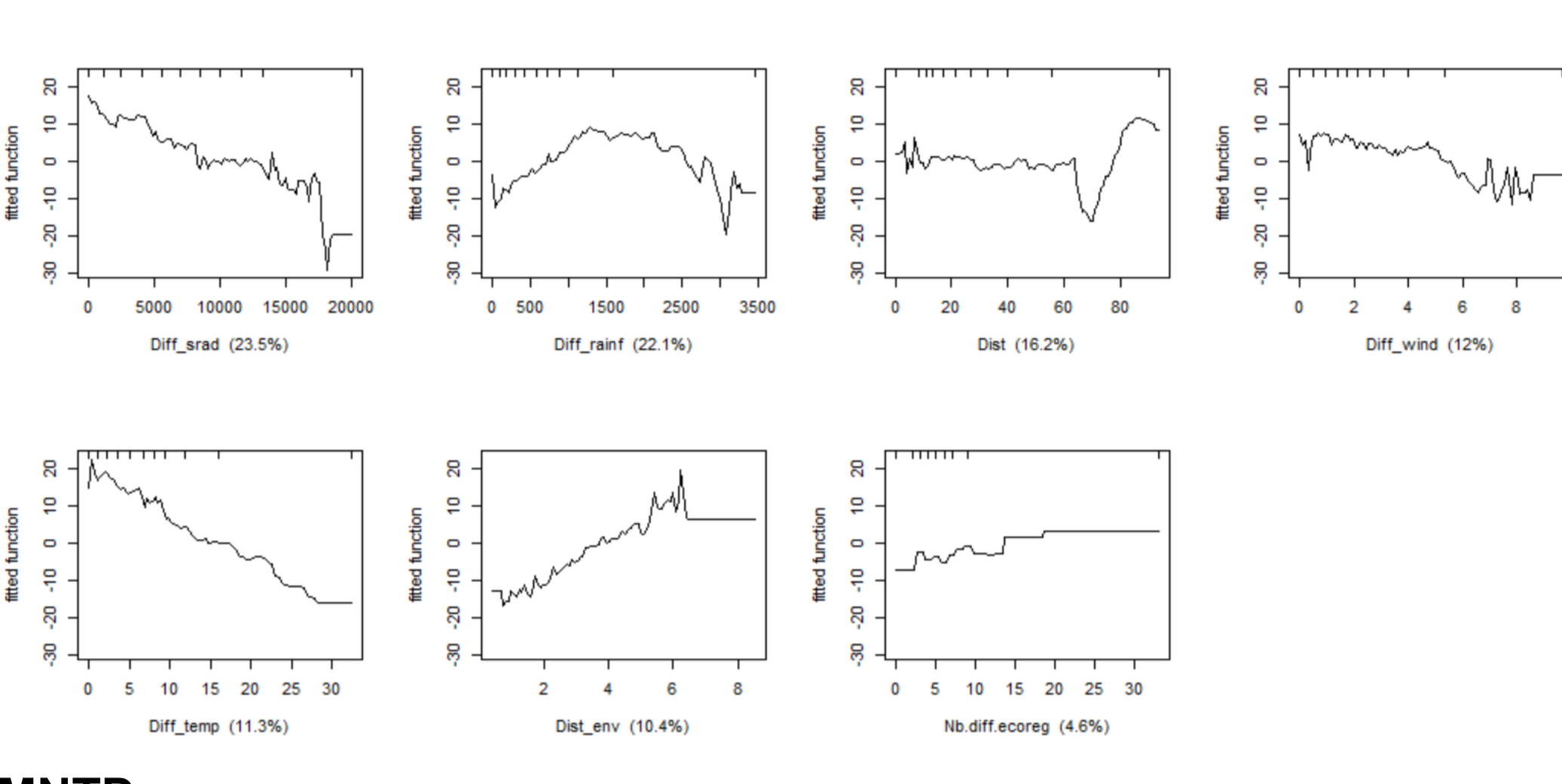
10 closest continental areas



5 closest continental areas

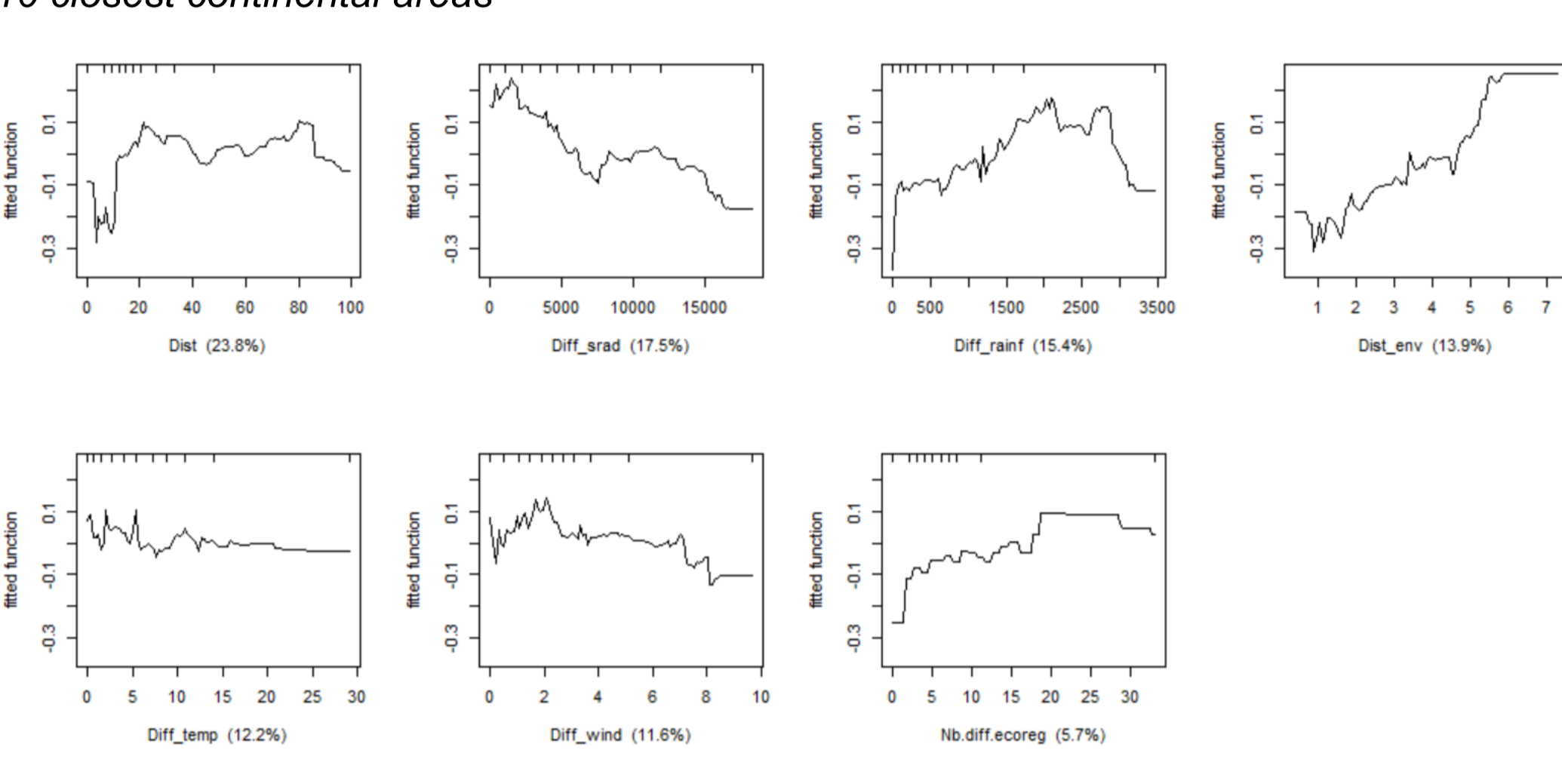


20 closest continental areas

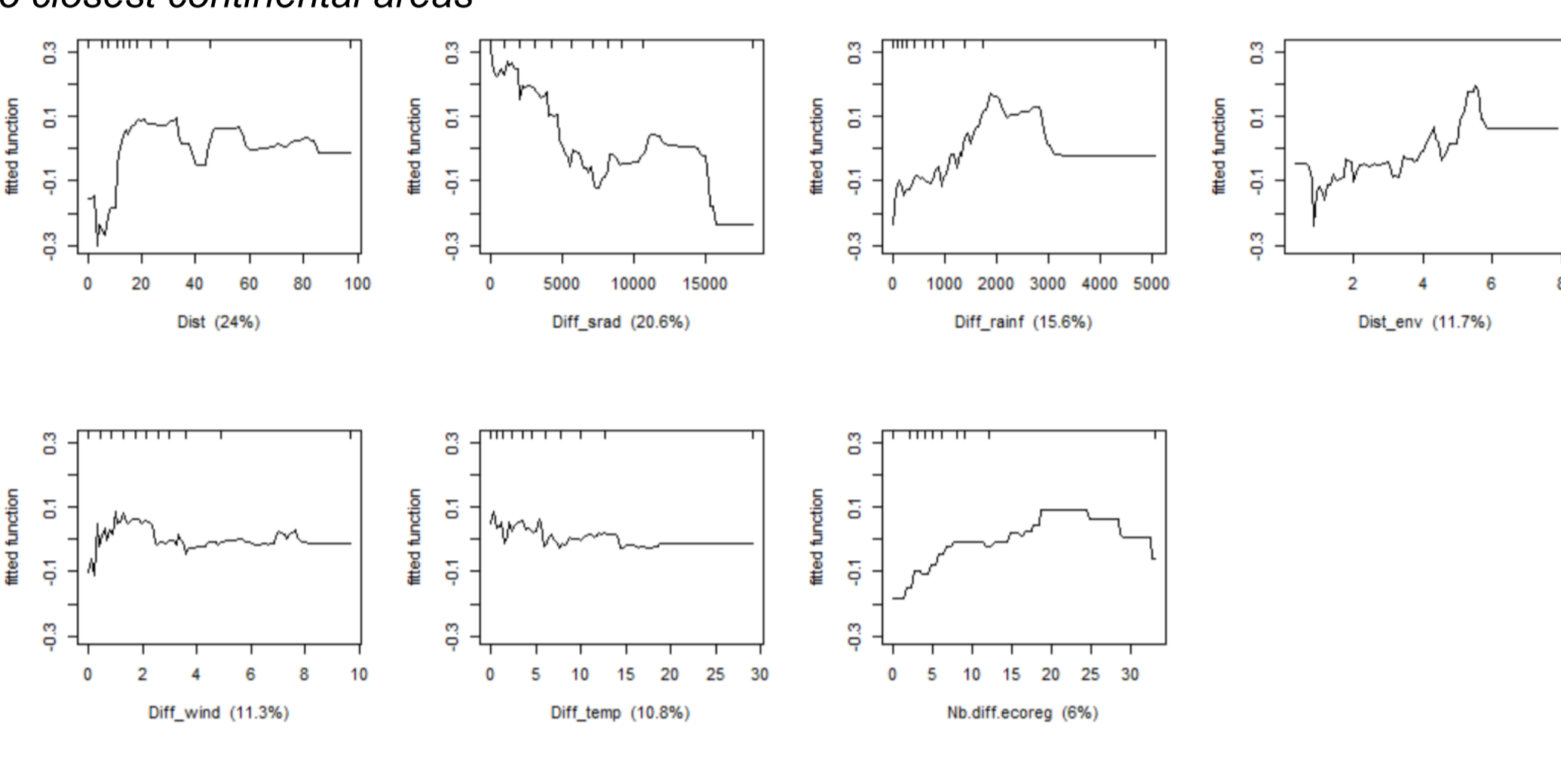


MMTD_β

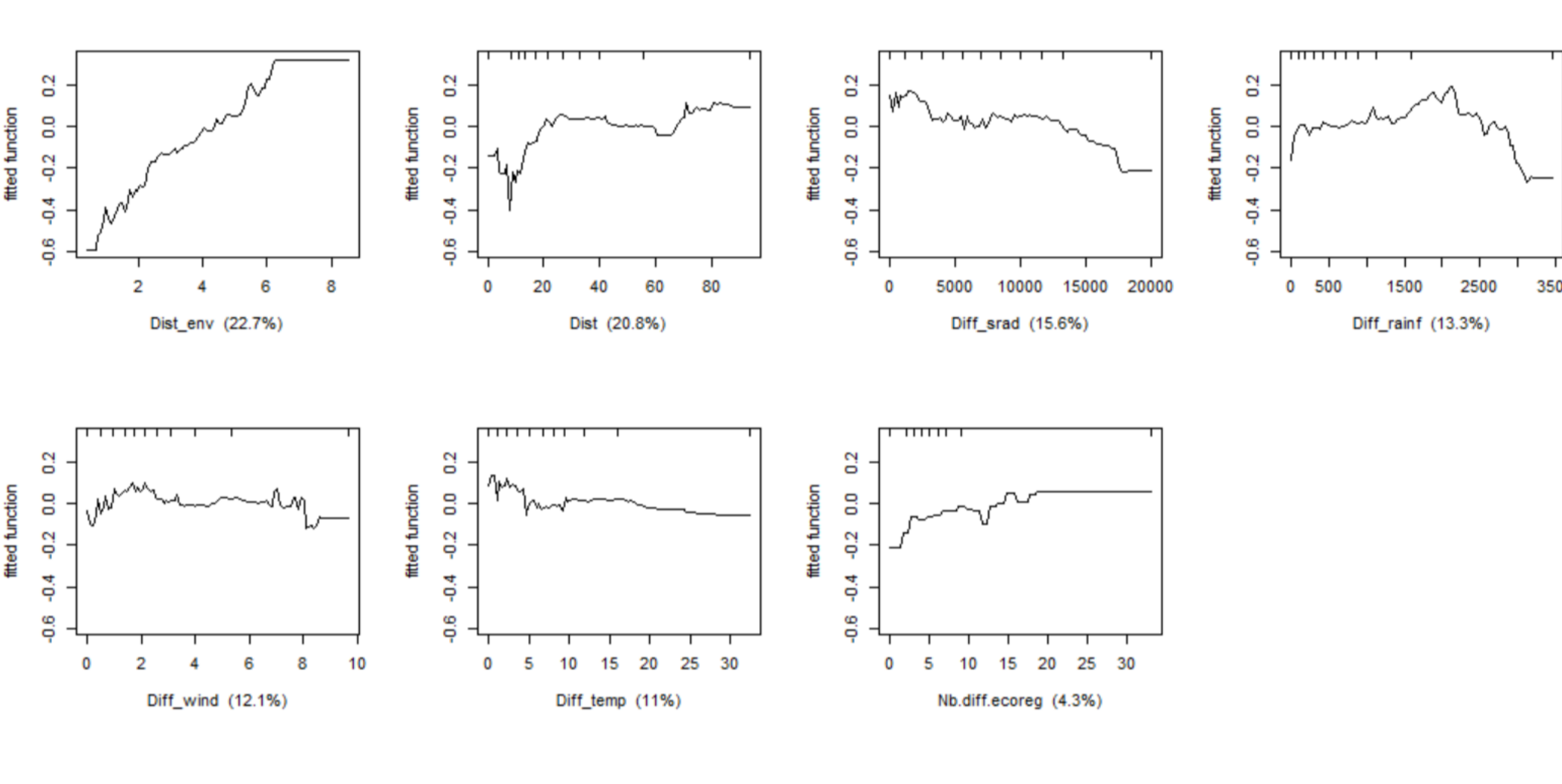
10 closest continental areas



5 closest continental areas



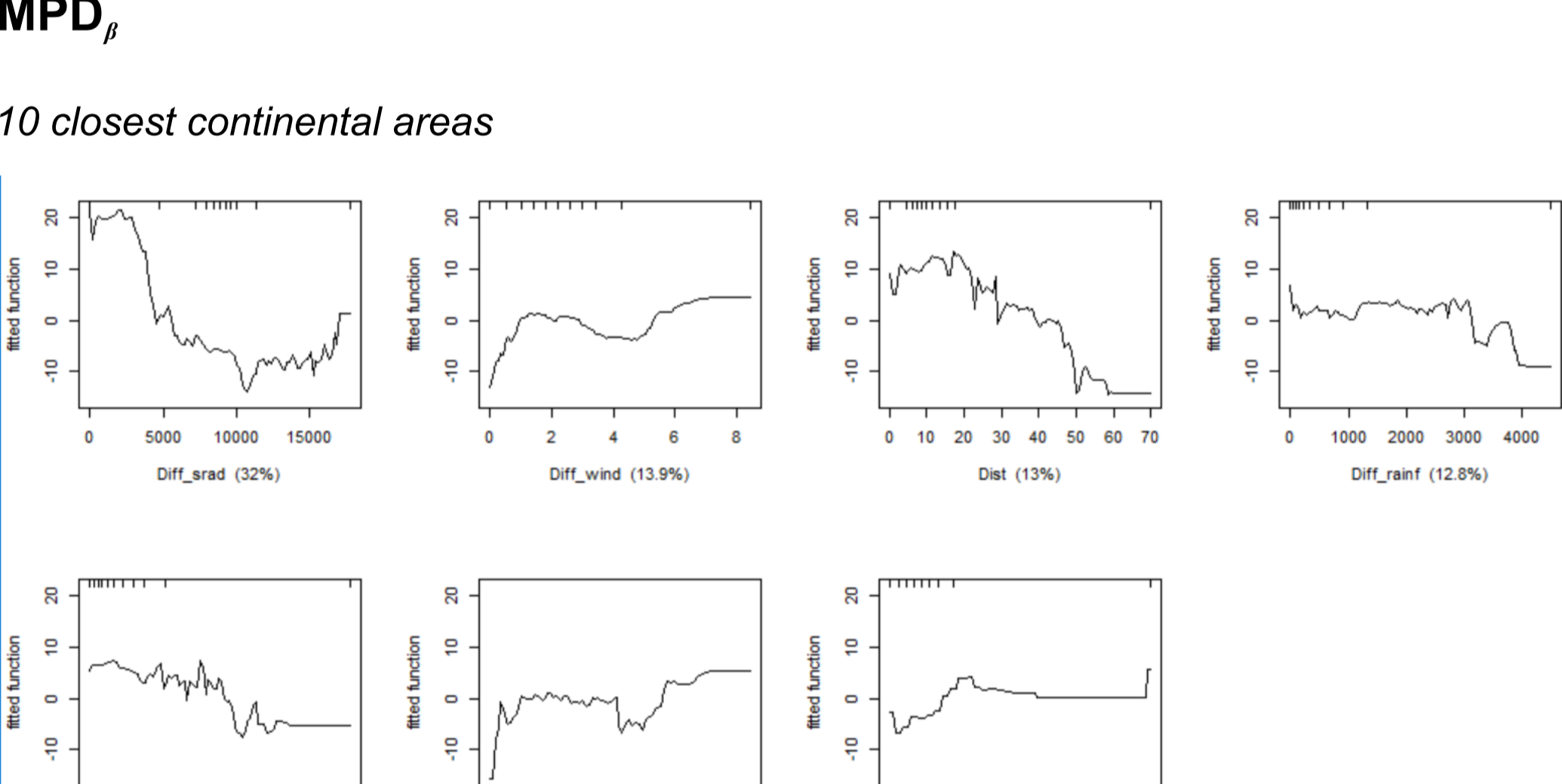
20 closest continental areas



b) Continental islands

MPD_β

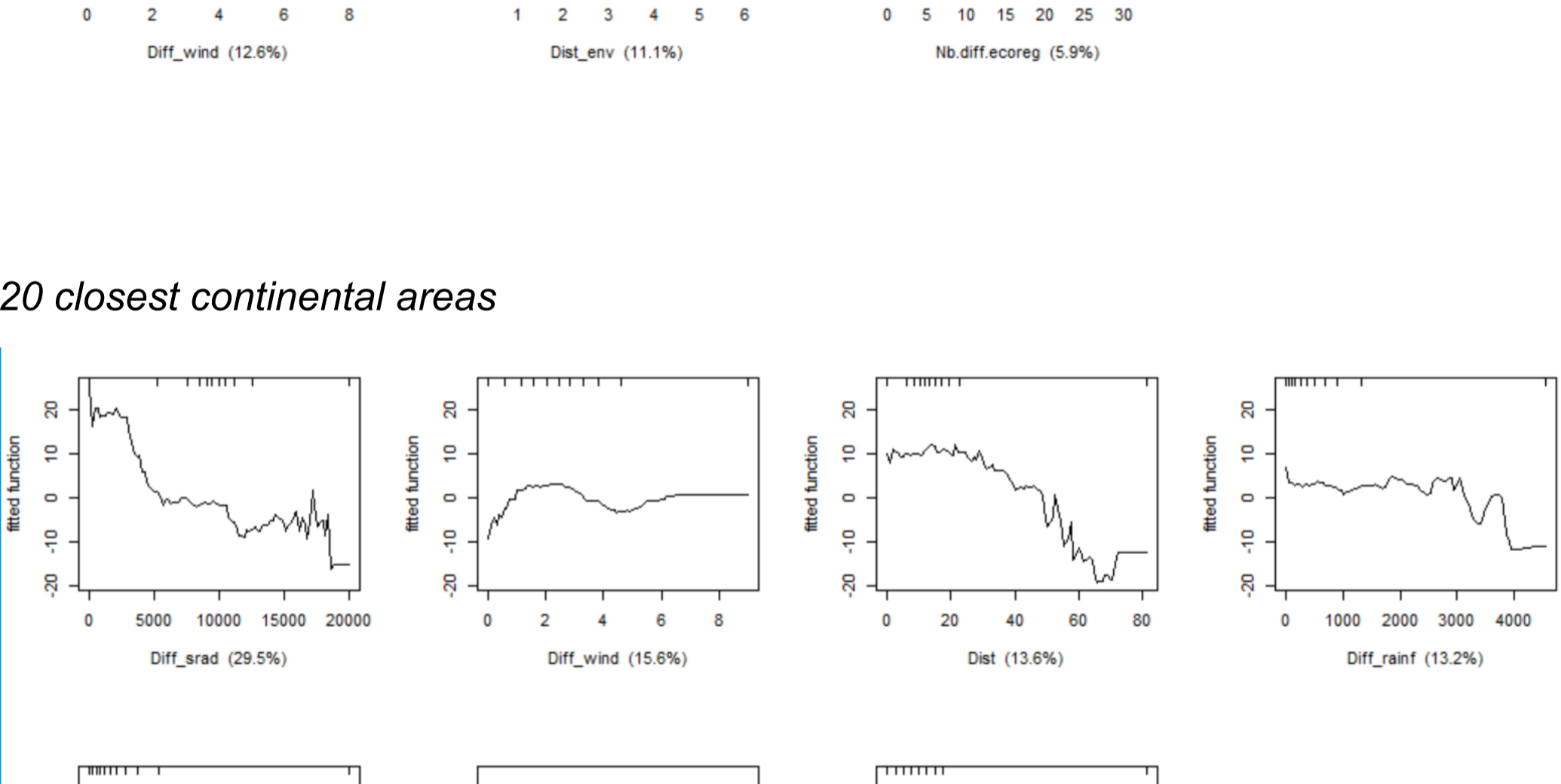
10 closest continental areas



5 closest continental areas

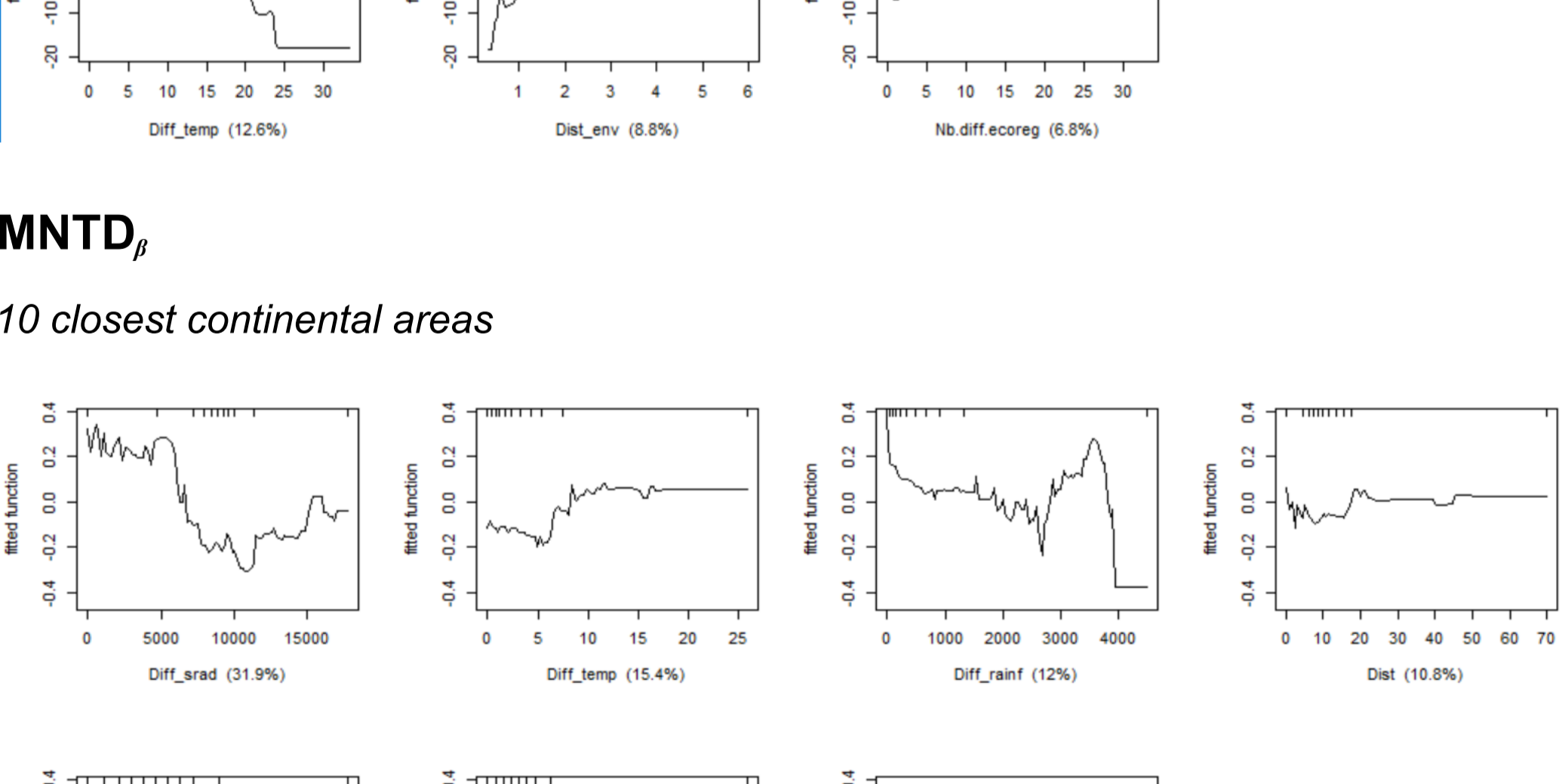


20 closest continental areas

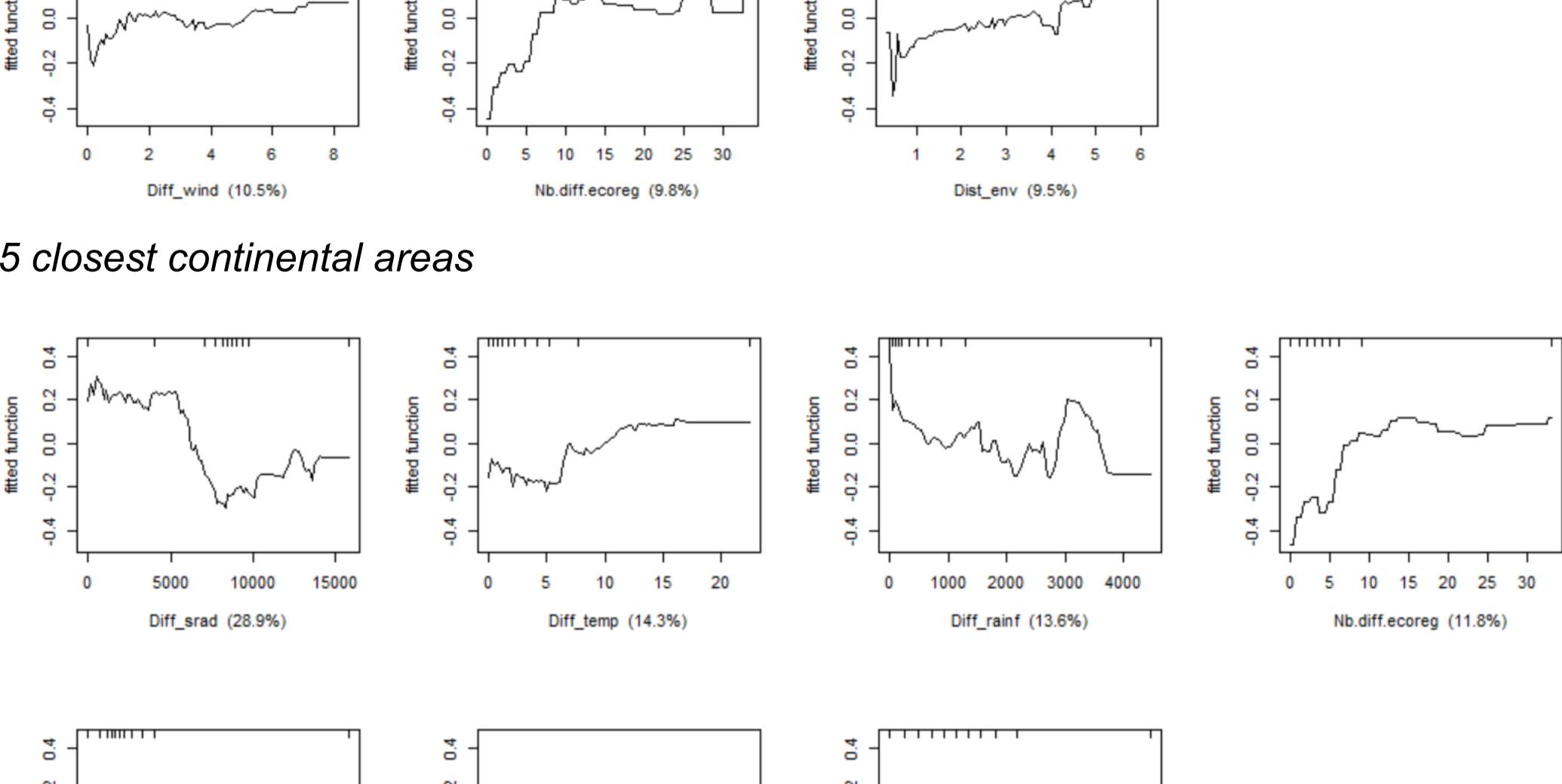


MMTD_β

10 closest continental areas



5 closest continental areas



20 closest continental areas

