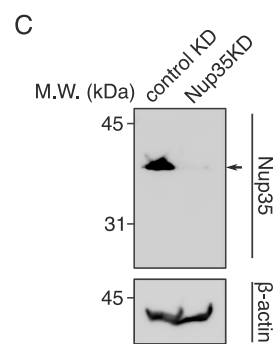
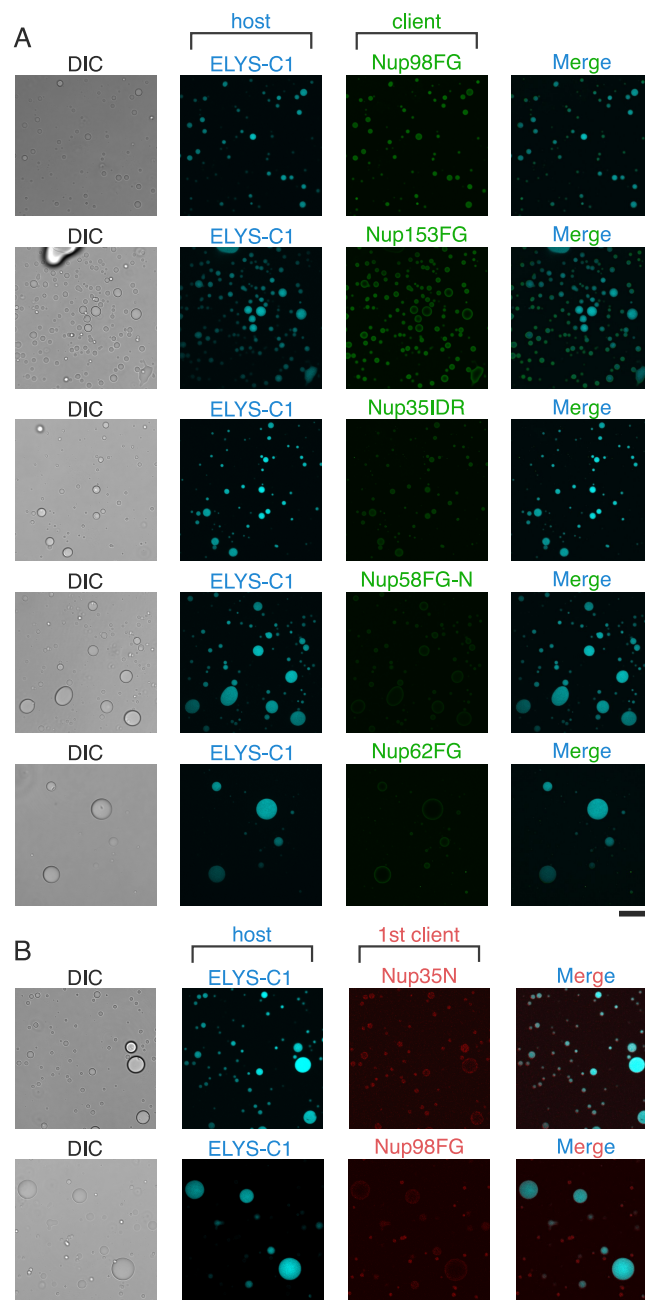


Konishi et al., Figure S3



Name	Amino acid position	Molecular weight	Number of residues	Number of F, I, L, V, M, and P	Net charge	UniProt KB number
hNup98FG	aa 214-480	≈ 26 kDa	267	24	4	P52948
hNup153FG	aa 1190-1464	≈ 28 kDa	275	27	2	P49790
hNup214FG	aa 1786-2090	≈ 30 kDa	305	23	4.9	P35658
rNup62FG	aa 1-268	≈ 28 kDa	268	25	3	P17955
hNup58FG-C	aa 438-599	≈ 17 kDa	162	27	9.9	Q9BVL2
hNup58FG-N	aa 1-250	≈ 25 kDa	250	24	0	Q9BVL2
hNup214-C	aa 1251-1550	≈ 31 kDa	300	30	-4.9	P35658
hNup50FG	aa 1-145	≈ 16 kDa	145	25	2	Q9UKX7
hNup35N	aa 1-160	≈ 17 kDa	160	69	4.1	Q8NFH5
hELYS-C1	aa 1851-2033	≈ 21 kDa	183	47	18.1	Q8WYP5
hELYS-C2	aa 2034-2275	≈ 27 kDa	242	68	21.2	Q8WYP5
hTpr-IDR1	aa 1451-1689	≈ 27 kDa	239	53	-5.5	P12270
hELYS-M	aa 1310-1559	≈ 27 kDa	250	73	-37.2	Q8WYP5
hTpr-IDR2	aa 1690-1937	≈ 26 kDa	248	73	-25.8	P12270

FG-Nups

IDR-Nups (non-FG-Nups)

Non-self-organized

Self-organized

Non-self-organized

Self-organized

Konishi HA et al., Table S1

host client	BSA	Nup214FG -rich	Nup214FG -less	Nup62FG	Nup58FG-C	Nup58FG-N	Nup98FG	Nup153FG	Nup50FG
Nup214FG-rich	0.51±0.12 (n=275)	1.55±0.34 (n=1467)	0.81±0.33 (n=409)	1.71±0.25 (n=826)	0.76±0.29 (n=1371)	1.00±0.22 (n=641)	1.48±0.26 (n=571)	1.56±0.33 (n=778)	0.33±0.10 (n=171)
Nup62FG	0.67±0.17 (n=45)	1.71±0.25 (n=826)	1.30±0.17 (n=26)	1.62±0.27 (n=480)	1.05±0.25 (n=361)	1.29±0.33 (n=274)	1.58±0.32 (n=40)	1.67±0.36 (n=158)	0.60±0.13 (n=59)
Nup98FG	0.19±0.09 (n=211)	1.48±0.26 (n=571)	1.24±0.27 (n=82)	1.58±0.32 (n=40)	0.73±0.26 (n=382)	1.52±0.29 (n=205)	1.41±0.26 (n=615)	1.28±0.29 (n=340)	0.82±0.20 (n=62)
Nup153FG	0.46±0.11 (n=182)	1.56±0.33 (n=778)	0.94±0.24 (n=359)	1.67±0.36 (n=158)	1.28±0.33 (n=355)	1.53±0.25 (n=237)	1.28±0.29 (n=340)	1.48±0.23 (n=505)	0.58±0.18 (n=214)

host client	BSA	ELYS-C1	Nup153FG	Nup98FG	Nup35IDR	Nup58FG-N	Nup50FG	Nup62FG	Nup214FG -rich	Tpr-IDR1
Tpr-IDR1	0.88±0.20 (n=59)	1.02±0.14 (n=536)	NA	NA	NA	0.99±0.21 (n=109)	1.34±0.24 (n=205)	NA	NA	1.17±0.20 (n=44)
Nup35N	1.00±0.27 (n=66)	1.28±0.30 (n=920)	1.59±0.26 (n=417)	1.53±0.29 (n=88)	1.30±0.30 (n=538)	1.28±0.24 (n=367)	NA	1.62±0.24 (n=787)	1.77±0.27 (n=1110)	NA
ELYS-C1	0.57±0.18 (n=215)	1.57±0.29 (n=741)	1.62±0.24 (n=704)	1.23±0.27 (n=472)	1.28±0.30 (n=920)	1.13±0.22 (n=1951)	0.57±0.15 (n=758)	1.51±0.36 (n=1116)	1.71±0.31 (n=1043)	1.02±0.14 (n=536)

Konishi HA et al., Table S2