

## **Cross-disorder GWAS meta-analysis for Attention Deficit/Hyperactivity Disorder, Autism Spectrum Disorder, Obsessive Compulsive Disorder, and Tourette Syndrome**

Zhiyu Yang<sup>1</sup>, Hanrui Wu<sup>1</sup>, Phil H. Lee<sup>2</sup>, Fotis Tsetsos<sup>3</sup>, Lea K. Davis<sup>4</sup>, Dongmei Yu<sup>2</sup>, Sang Hong Lee<sup>5,6</sup>, Søren Dalsgaard<sup>7,8,9</sup>, Jan Haavik<sup>10,11</sup>, Csaba Barta<sup>12</sup>, Tetyana Zayats<sup>10,13</sup>, Valsamma Eapen<sup>14</sup>, Naomi R. Wray<sup>15,5</sup>, Bernie Devlin<sup>16</sup>, Mark Daly<sup>17,18</sup>, Benjamin Neale<sup>17,18,19</sup>, Anders D. Børglum<sup>20,7,21,22</sup>, James J. Crowley<sup>23</sup>, Jeremiah Scharf<sup>2</sup>, Carol A. Mathews<sup>24</sup>, Stephen V. Faraone<sup>25</sup>, Barbara Franke<sup>26,27,28</sup>, Manuel Mattheisen<sup>29,30,31</sup>, Jordan W. Smoller<sup>2,17</sup>, Peristera Paschou<sup>1</sup>

<sup>1</sup> Department of Biological Sciences, Purdue University, West Lafayette, Indiana

<sup>2</sup> Psychiatric and Neurodevelopmental Genetics Unit, Center for Genomic Medicine, Department of Psychiatry, Harvard Medical School, Massachusetts General Hospital, Boston, Massachusetts

<sup>3</sup> Department of Molecular Biology and Genetics, Democritus University of Thrace, Alexandroupoli, Greece

<sup>4</sup> the Division of Genetic Medicine, Vanderbilt Genetics Institute, Vanderbilt University Medical Center, Nashville, Tennessee

<sup>5</sup> Queensland Brain Institute, University of Queensland, Brisbane, Queensland, 4072, Australia

<sup>6</sup> Australian Centre for Precision Health, University of South Australia Cancer Research Institute, University of South Australia, Adelaide, South Australia, 5000, Australia

<sup>7</sup> Lundbeck Foundation Initiative for Integrative Psychiatric Research, iPSYCH, Aarhus, Denmark

<sup>8</sup> National Centre for Register-based Research, Aarhus University, Aarhus, Denmark

<sup>9</sup> Hospital of Telemark, Kragerø, Norway

<sup>10</sup> K.G. Jebsen Centre for Neuropsychiatric Disorders, Department of Biomedicine, University of Bergen, Norway

<sup>11</sup> Division of Psychiatry, Haukeland University Hospital, Bergen, Norway

<sup>12</sup> Institute of Medical Chemistry, Molecular Biology and Pathobiochemistry, Semmelweis University, Budapest, Hungary

<sup>13</sup> Analytic Translational Genetics Unit, Massachusetts General Hospital and Harvard Medical School, Boston, Massachusetts

<sup>14</sup> Academic Unit of Child Psychiatry South West Sydney, School of Psychiatry, University of New South Wales, Sydney, NSW, Australia

<sup>15</sup> Institute for Molecular Bioscience, University of Queensland, Brisbane, Australia

<sup>16</sup> Department of Psychiatry, University of Pittsburgh School of Medicine, Pittsburgh, Pennsylvania

- <sup>17</sup> Stanley Center for Psychiatric Research, Broad Institute, Cambridge, Massachusetts
- <sup>18</sup> Analytic and Translational Genetics Unit, Massachusetts General Hospital, Boston, Massachusetts
- <sup>19</sup> Medical and Population Genetics, Broad Institute, Cambridge, Massachusetts
- <sup>20</sup> Department of Biomedicine - Human Genetics, Aarhus University, Aarhus, Denmark
- <sup>21</sup> Center for Integrative Sequencing (iSEQ), Aarhus University, Aarhus, Denmark
- <sup>22</sup> Center for Genomics and Personalized Medicine, Aarhus, Denmark
- <sup>23</sup> Departments of Genetics and Psychiatry, University of North Carolina at Chapel Hill
- <sup>24</sup> Department of Psychiatry & Genetics Institute, University of Florida, Gainesville
- <sup>25</sup> Departments of Psychiatry and of Neuroscience and Physiology, SUNY Upstate Medical University, Syracuse, New York
- <sup>26</sup> Department of Human Genetics, Radboud University Medical Center, Nijmegen, The Netherlands
- <sup>27</sup> Department of Psychiatry, Radboud University Medical Center, Nijmegen, The Netherlands
- <sup>28</sup> Donders Institute for Brain, Cognition and Behaviour, Radboud University, Nijmegen, The Netherlands
- <sup>29</sup> Department of Psychiatry, Psychosomatics and Psychotherapy, Center of Mental Health, University Hospital Wuerzburg, Wuerzburg, Germany
- <sup>30</sup> Department of Biomedicine, Aarhus University, Aarhus, Denmark
- <sup>31</sup> Department of Clinical Neuroscience, Centre for Psychiatry Research, Karolinska Institutet, Stockholm, Sweden

## **Correspondence**

Peristera Paschou, PhD

Department of Biological Sciences

Purdue University

915 West State Str

West Lafayette, IN 47907

[ppaschou@purdue.edu](mailto:ppaschou@purdue.edu)

## **Abstract**

Attention Deficit/Hyperactivity Disorder (ADHD), Autism Spectrum Disorder (ASD), Obsessive-Compulsive Disorder (OCD), and Tourette Syndrome (TS) are among the most prevalent neurodevelopmental psychiatric disorders of childhood and adolescence. High comorbidity rates across these four disorders point toward a common etiological thread that could be connecting them across the repetitive behaviors-impulsivity-compulsivity continuum. Aiming to uncover the shared genetic basis across ADHD, ASD, OCD, and TS, we undertake a systematic cross-disorder meta-analysis, integrating summary statistics from all currently available genome-wide association studies (GWAS) for these disorders, as made available by the Psychiatric Genomics Consortium (PGC) and the Lundbeck Foundation Initiative for Integrative Psychiatric Research (iPSYCH). We present analysis of a combined dataset of 93,294 individuals, across 6,788,510 markers and investigate associations on the single-nucleotide polymorphism (SNP), gene and pathway levels across all four disorders but also pairwise. In the ADHD-ASD-OCD-TS cross disorder GWAS meta-analysis, we uncover in total 297 genomewide significant variants from six LD (linkage disequilibrium) -independent genomic risk regions. Out of these genomewide significant association results, 199 SNPs, that map onto four genomic regions, show high posterior probability for association with at least three of the studied disorders ( $m\text{-value} > 0.9$ ). Gene-based GWAS meta-analysis across ADHD, ASD, OCD, and TS identified 21 genes significantly associated under Bonferroni correction. Out of those, 15 could not be identified as significantly associated based on the individual disorder GWAS dataset, indicating increased power in the cross-disorder comparisons. Cross-disorder tissue-specificity analysis implicates the Hypothalamus-Pituitary-Adrenal axis (stress response) as possibly underlying shared pathophysiology across ADHD, ASD, OCD, and TS. Our work highlights genetic variants and genes that may contribute to overlapping neurobiology across the four studied disorders and highlights the value of re-defining the framework for the study across this spectrum of highly comorbid disorders, by using transdiagnostic approaches.

## **Keywords**

**ADHD, ASD, OCD, Tourette Syndrome, cross-disorder genetic analysis, GWAS meta-analysis**

## Introduction

Attention Deficit/Hyperactivity Disorder (ADHD, 5.3%), Autism Spectrum Disorder (ASD, 1.4%), Obsessive Compulsive Disorder (OCD, 1-3%), and Tourette Syndrome (TS, 0.6-1%) are among the most prevalent developmental psychiatric disorders of childhood and adolescence (1–4). Although each of these disorders defines a distinct DSM diagnostic category, they are highly comorbid. For instance, up to 55 % of TS patients also present with ADHD symptoms, 50% have OCD, and up to 20% present with ASD (5–7). The high comorbidity rates across these disorders lend support to the hypothesis of a common etiological thread that connects them across an impulsivity-compulsivity spectrum (8). Transdiagnostic approaches may shed light on the biology underlying this symptom continuum and hold the promise to identify targets for the development of personalized treatments that are still lacking.

ADHD, ASD, OCD, and TS all have a complex and highly heterogeneous genetic architecture with both common and rare genetic variants contributing to their etiology (4,9–12). Consequently, identifying and confirming genetic susceptibility factors has been challenging, demanding large samples for initial discovery and even larger samples for replication. Over the past few years, twelve genome-wide significant loci have been identified for ADHD (13), and five genome-wide significant loci were described for ASD (14,15). For OCD no genome-wide significant loci have been detected to date (16), while one genome-wide significant locus was recently reported for TS (17).

Based on the hypothesis for a shared etiology across ADHD, ASD, OCD, and TS (18,19), so far, several cross-disorder analyses have evaluated the genetic overlap across these disorders revealing broad genetic correlations (20–25). Most recently, the Psychiatric Genomics Consortium (PGC) presented a meta-analysis of GWAS across eight common psychiatric disorders including ADHD, ASD, OCD, and TS, analyzed jointly with GWAS data for anorexia nervosa (AN), bipolar disorder (BD), major depression (MD), and schizophrenia (SZ) (20). The study reports significant genetic correlations for most pairs of studied disorders, suggesting a complex, higher-order genetic structure underlying psychopathology. Exploratory factor analysis revealed three correlated factors, which together explained 51% of the genetic variation in the eight studied neuropsychiatric disorders. Early-onset disorders including ADHD, ASD, and TS fell in one of the three identified factors (together with MD) while TS was also found in another factor together with compulsive disorders including OCD and AN. Variant-level analyses with all eight disorders analyzed jointly, supported the existence of substantial pleiotropy, with nearly 75% of the 146 genome-wide significant Single Nucleotide Polymorphisms (SNPs) influencing more than one of the eight examined disorders. Two loci among the ones that were found significant from the eight-disorder analysis were also reported with high confidence association for the four disorders that are the focus of the current study (implicating genes *DCC* and *RBFOX1*). These results further support the existence of shared neurobiology across traditional diagnostic boundaries revealing genetic

loci that may have a pleiotropic effect across multiple psychiatric disorders. Thus studies that focus on cross-disorder etiology in finer detail are warranted.

Motivated by the high comorbidity rates and existing hypotheses for shared etiology across ADHD, ASD, OCD, and TS we focus on cross-disorder GWAS meta-analysis among these specific phenotypes. We integrate all currently available genome-wide data for these disorders and perform systematic cross-disorder meta-analyses seeking to identify shared and divergent genetic factors across four disorders that are often observed comorbid in childhood and adolescence. Our work highlights variants and genes that may contribute to neurobiology across the impulsivity-compulsivity spectrum of phenotypes.

## Methods

### Data sources

Analyses were conducted using summary statistics from GWAS for ADHD, ASD, OCD, and TS as made available by the PGC. For ADHD, samples were collected by iPSYCH and PGC, with most of the samples genotyped using the Illumina PsychArray. Only samples of European ancestry were included in our analyses, comprising 19,099 cases and 34,194 ancestry-matched controls. In total, 8,047,421 variants overlapping across all cohorts after imputation were analyzed (13).

For ASD, we acquired the summary statistics of 18,382 cases and 27,969 ancestry-matched controls of European ancestry collected by iPSYCH and PGC. Most of the samples were genotyped with the Illumina PsychChip. After meta-analysis, 9,112,387 variants overlapping across sample sources were available (15).

For OCD, we used results from a meta-analysis of GWAS from two consortia: International Obsessive Compulsive Disorder Foundation Genetics Collaborative (IOCDF-GC) (26) and OCD Collaborative Genetics Association Studies (OC GAS) (27), which led to a total of 2,688 affected samples and 7,037 ancestry-matched controls from Europe. Samples were genotyped with multiple different Illumina's BeadChip arrays. After meta-analysis, 8,409,517 variants were found overlap and used for our study (16).

For TS, we combined results from the first GWAS on TS, conducted by Scharf et al. (28) and newly collected cases and controls. In total, 4,232 cases and 8,283 ancestry-matched controls were used for the analysis, which resulted in 8,868,895 variants overlapping in the meta-analysis. These summary statistics correspond to the GWAS carried out by Yu et al. (17), without samples from the Tic Genetic Consortium.

For all data obtained from the PGC, Ricopili pipeline (<https://github.com/Ripkelab/ricopili/wiki>) or comparable quality controls were carried out.

## **Linkage disequilibrium (LD)-score regression to estimate genetic correlation across disorders**

LD-score regression analysis was carried out using the LDSC package (29). Only common SNPs (MAF > 0.01) with an imputation quality (INFO) score > 0.9 and matched with the provided HapMap3 SNPs reference were analyzed. LD scores estimated for the European samples from the 1000 Genomes phase 3 (30) were used as both the independent variable and the weight for the regression.

## **GWAS meta-analysis**

To investigate the genetic variants underlying the observed overlap, cross-disorder meta-analysis was carried out for all four disorders combined, as well as for each individual pair of disorders that we found to be significantly correlated. SNP-based GWAS meta-analyses was performed using ASSET (31), which takes into account dependency across studies due to sample overlap (32). For each study, the variants' effect sizes were measured by the logarithm of the odds ratio (OR). The possibility of inflation of results was investigated through observed  $\lambda$  as well as the sample size - corrected value  $\lambda_{1000}$ . Variants with meta-analysis p-values below the genome-wide significance threshold ( $p < 5 \times 10^{-8}$ ) were considered significant. To further highlight SNPs that contribute to risk across multiple phenotypes, we estimated the posterior probability of association (referred to as the m-value) with each disorder using a Bayesian statistical framework as implemented by MetaSoft (33). An m-value threshold of 0.9 has been recommended to predict with high confidence that a particular SNP is associated with a given disorder.

## **Gene-based cross-disorder GWAS analysis**

Gene-based cross-disorder GWAS analysis was carried out using the MAGMA plug-in on the FUMA GWAS annotation platform (34,35). For this analysis, variants were mapped onto genes based on their exact physical positions without extended windows and aggregated association p-values were calculated for each gene. Analysis was carried out under a SNP-wise (mean) model. Considering the sample composition, a European ancestry reference from 1000 Genomes phase 3 was used as the reference panel. Analysis was done with the summary statistics of each disorder individually as well as all meta-analysis results obtained. Significance thresholds were set applying Bonferroni correction for each analysis, corresponding to the number of genes being tested.

## **Gene-property analysis for tissue specificity**

To investigate phenotypic tissue specificity, a gene-property analysis testing for the relationship between tissue-specific gene expression and phenotype for associated genes was carried out using MAGMA for meta-analysis results with both GTEx v7 30 and 53 general tissue type expression atlas (36). Significant thresholds for these analyses were p-value  $< 1.67 \times 10^{-3}$  and p-value  $< 9.43 \times 10^{-4}$ , respectively, under Bonferroni correction. The analysis was done for both the four-disorder and all the significantly correlated disorder pairs.



## Gene-set analysis

Gene-set analysis was also performed using MAGMA under a default competitive test. Gene sets and gene ontology (GO) terms tested were obtained from MsigDB v 6.1 (<http://software.broadinstitute.org/gsea/msigdb>), which contains 10,655 gene sets consistent across multiple sources. Bonferroni correction was applied to calculated association p-values to determine significance.

## Results annotation

SNP-based annotation and gene mapping were carried out for significant SNPs with ANNOVAR (37), including functional predictions for all significant non-synonymous mutations using SIFT (38) and PolyPhen-2 (39) plug-ins of ANNOVAR. Regional plots for the top-variants were created for 400 kb windows using the LocusZoom platform (40). For all significant results from our SNP-based and gene-based meta-analyses, we looked up previously reported associations in the GWAS catalog (41). Aggregate functional information and tissue expression levels of the genes were acquired from the GeneCards database (42), the GTEx Portal (43), and the Expression Atlas (44). Annotation of independent genomic risk loci from the FUMA GWAS platform was also adopted under parameters  $LD\ r^2 < 0.6$  for SNPs with association  $p < 5 \times 10^{-5}$  and within 1000 kb away from the significant lead-SNP ( $p < 5 \times 10^{-8}$ ). GO-annotation and the over-representation tests were performed using the R package ClusterProfiler v3.0.4 (45). Genes were mapped onto GO-terms based on org.Hs.eg.db (46). Enrichment of GO-terms was evaluated through a hypergeometric test (47). Network plotting was carried out using the built-in function of ClusterProfiler.

## Transcriptome-wide association study

Association between the studied disorders and gene expression levels in the brain was evaluated through summary-data-based Mendelian Randomization. The SMR software was used and analysis was performed for each individual disorder as well as using results from our GWAS meta-analyses (48). We used GWAS summary statistics for each studied disorder (as described above), the LD structure from from 1000 Genomes European reference panel and summary statistics from brain expression quantitative trait loci (eQTL) analysis (49), which quantified the effect of SNPs over gene expression levels in brain tissue (36,50). Only variants showing a consistent allele frequency (pairwise MAF difference between datasets no more than 0.20) across all three datasets (GWAS summary statistic, 1000 Genome reference, and eQTL summary statistic) were included in the analysis. All transcript probes with at least one cis-eQTL site showing  $p_{eQTL} < 5 \times 10^{-8}$  were taken into consideration. SNPs affecting the same probe with  $LD\ r^2 > 0.9$  or  $< 0.05$  were pruned out from the analyses. Significance thresholds were based on Bonferroni correction for the number of probes tested.

To further verify that the effect of a probe on the trait was mediated by shared causal variants affecting both its expression and the trait rather than different variants in LD, we also carried out the HETerogeneity InDEpendent Instruments (HEIDI) test to evaluate the heterogeneity in the

effect sizes of SNPs over trait and expression for each probe, evaluated as  $p_{\text{HEIDI}}$ . As a default of the software, only SNPs with  $p_{\text{eQTL}} < 1.5654 \times 10^{-3}$  were taken forward for this analysis. Up to top 20 independent SNPs in the cis-eQTL region were used for each tested probe to optimize the test power. A  $p_{\text{HEIDI}} > 0.05$  indicates the existence of a shared cause underlying the expression level of a transcript probe and the trait, suggesting dysregulation of the transcript is functionally relevant to the trait.

## Results

### Genetic correlation across ADHD, ASD, OCD, and TS

First, we evaluated the extent of genetic overlap across ADHD, ASD, OCD, and TS using LD-score regression (Table 1). Results were in concordance with previous estimates (20). High genetic correlations were observed between all pairs of disorders, except for ASD and OCD. The highest genetic correlation was found between OCD and TS ( $r_g = 0.3846$ ,  $p = 0.0002$ ), while a negative genetic correlation was observed between ADHD and OCD ( $r_g = -0.1695$ ,  $p = 0.0216$ ). All regression intercepts for individual disorder heritability estimations were close to 1 (ADHD: 1.0334 (0.0101); ASD: 1.0084 (0.0096); OCD: 0.9928 (0.0068); TS: 1.0125 (0.0066)), indicating no signs of inflation.

**Table 1.** LD score regression analysis showing pairwise genetic correlation across ADHD, ASD, OCD, and TS. #SNPs = number of overlapping SNPs used in the analysis;  $R_g$  = genetic correlation; SE,  $P$  = standard error and  $p$ -value for  $R_g$ ; Intercept (SE) = Intercept for genetic correlation and corresponding standard error.

	Disorder pairs					
	ADHD/ASD	ADHD/OCD	ADHD/TS	ASD/OCD	ASD/TS	OCD/TS
#SNPs	1042563	1030018	1062415	1012959	1044625	1100873
$R_g$	0.3459	-0.1695	0.2555	0.1185	0.177	0.3846
SE	0.0511	0.0738	0.06	0.0827	0.0638	0.1042
$P$	1.33E-11	0.0216	2.05E-05	0.1517	0.0055	0.0002
Intercept (SE)	0.3626 (0.0073)	0.0082 (0.006)	0.0136 (0.0064)	-0.0003 (0.0063)	0.0045 (0.0056)	0.0728 (0.005)

### Cross-disorder meta-analysis of ADHD, ASD, OCD, and TS GWAS

In order to identify genetic loci that are associated with patient phenotype across the spectrum of ADHD, ASD, OCD, and TS, we performed meta-analysis of available GWAS datasets. Combining all four datasets described above, 93,294 non-overlapping samples (including 51,311 controls) were available for analysis. After all filtering and cross-datasets alignment (as described in methods), 6,788,510 variants were retained. We found  $\lambda_{\text{ADHD-ASD-OCD-TS}} = 1.185$ , corrected  $\lambda_{1000} =$



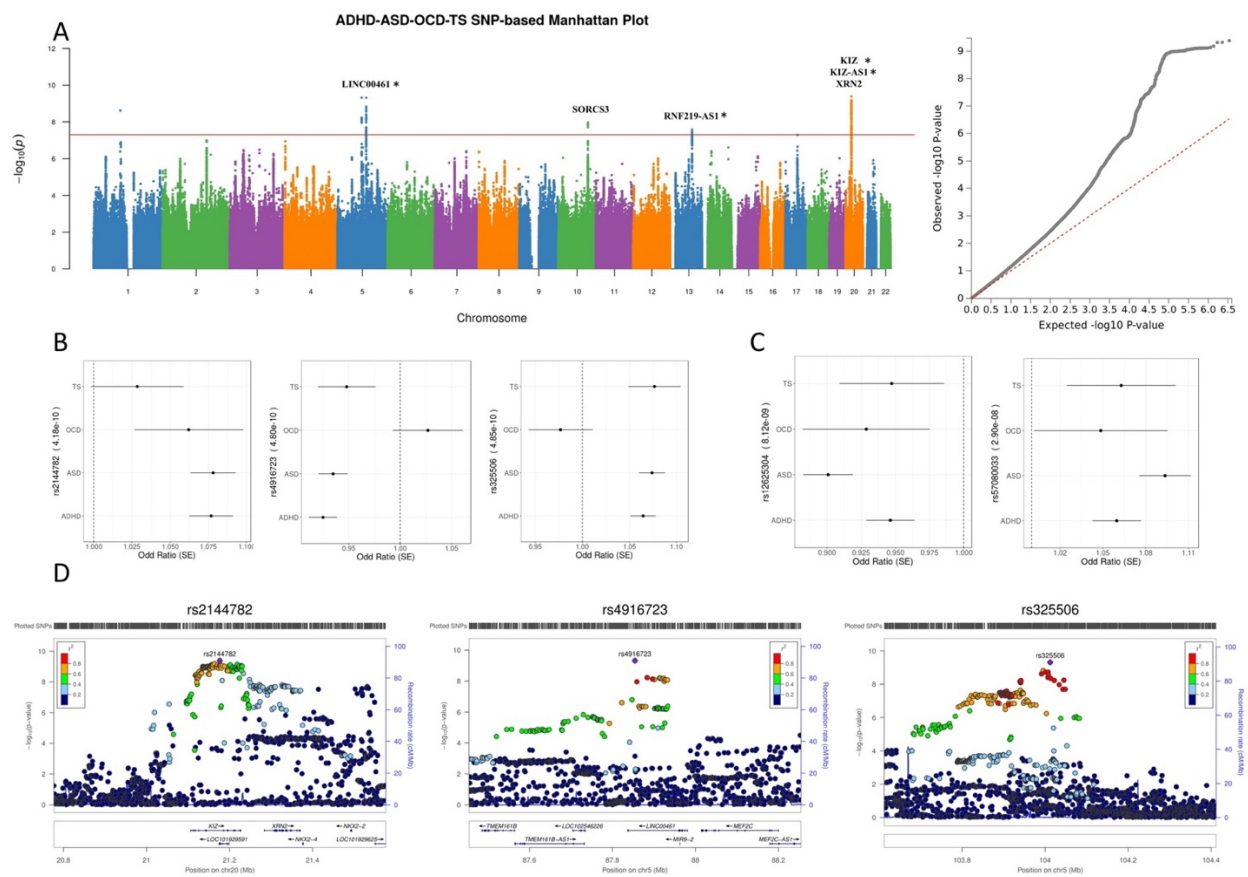
1.0040, showing little sign of inflation (Figure 1). We observed 297 genome-wide significant variants mapping onto six LD-independent genomic risk regions (Figure 1, Table S1, S2). 177 of the significant SNPs showed same direction of effect in all four disorders. Although we did not identify any SNP with m-value > 0.9 in all four disorders, all significant results had m-value > 0.9 in at least two of the disorders, and 199 were associated with m-value > 0.9 in three of the four disorders (Table S1). These 199 SNPs correspond to four genomic regions as shown in Table 2. The top result of the ADHD-ASD-OCD-TS GWAS meta-analysis was rs2144782 on chromosome 20, gene *KIZ/KIZ-AS1*. Three of the studied disorders (ADHD, ASD, and OCD) showed strong probability of association with this particular SNP ( $p = 4.18 \times 10^{-10}$ ,  $m_{ADHD} = 1$ ,  $m_{ASD} = 1$ ,  $m_{OCD} = 0.911$ ,  $m_{TS} = 0.672$ ). Furthermore, two significantly associated SNPs in this region had m-values > 0.8 in all four disorders indicating high probability for a cross-disorder effect (rs12625304,  $p = 8.12 \times 10^{-9}$ ,  $m_{ADHD} = 0.986$ ,  $m_{ASD} = 1$ ,  $m_{OCD} = 0.918$ ,  $m_{TS} = 0.881$  and rs57080033,  $p = 2.90 \times 10^{-8}$ ,  $m_{ADHD} = 0.999$ ,  $m_{ASD} = 1$ ,  $m_{OCD} = 0.83$ ,  $m_{TS} = 0.911$ ). This top region on chromosome 20 has also been previously highlighted by the ASD individual GWAS as well as results from the Cross-Disorder GWAS on eight different psychiatric disorders, although it was not reported among the most broadly pleiotropic ones (SNP rs6047287,  $p = 2.72 \times 10^{-10}$ ) (Cross-Disorder Group of the Psychiatric Genomics Consortium et al., 2019).

**Table 2.** Cross-disorder ADHD-ASD-OCD-TS GWAS meta-analysis: Genetic risk loci hosting SNPs with m-value > 0.9 in at least three disorders (SNPs showing m-value>0.9 in at least 3 disorders that has the lowest P value in each region are shown).

SNP	CHR	BP	P	Region	Gene(s)	ADHD m-value	ASD m-value	OCD m-value	TS m-value
rs2144782	20	21176604	4.18E-10	20p11.23	KIZ-AS1, KIZ	1	1	0.911	0.672
rs325506	5	104012303	4.85E-10	5q21.2	Intergenic	1	1	0.13	0.981
rs324895	5	87913831	6.22E-09	5q14.3	LINC00461	1	0.999	0.419	0.935
rs7318041	13	78857224	2.64E-08	13q22.3	RNF219-AS1	1	1	0.264	0.908

In order to investigate cross-disorder relationships in finer detail, we performed pairwise SNP-based GWAS meta-analysis for those pairs of disorders that were significantly correlated (Table 1). Across ADHD and ASD, 8,093,883 overlapping variants were analyzed ( $\lambda_{ADHD-ASD} = 1.195$ ,  $\lambda_{1000} = 1.0052$ ). In this case, 374 SNPs surpassed the significance threshold (Figure 2, Table S1). These corresponded to seven independent genomic risk regions, one of which has not been previously reported as associated with either disorder, (gene *MANBA*, Table S2). The top-result of the ADHD-ASD GWAS meta-analysis was rs1222063 ( $p = 7.61 \times 10^{-11}$ ,  $m_{ADHD} = 1$ ,  $m_{ASD} = 1$ ), an intergenic SNP on chromosome 1, residing between *LOC102723661* (distance = 114,004 bp) and *LINC01787* (distance = 117,185 bp). All 374 variants shared the same direction of effect and had m-values > 0.9 for both disorders indicating high probability for cross-disorder effect.

Across ADHD and OCD we analyzed 6,817,924 shared variants that passed the heterogeneity filter ( $\lambda_{\text{ADHD-OCD}} = 1.2020$ ,  $\lambda_{1000} = 1.0071$ ). 152 variants in six independent genomic regions were genome-wide significant, with one of them not identified in either ADHD or OCD individual study but showing  $m > 0.9$  for both disorders here (Figure 2, Table S1, S2). As expected due to the negative genetic correlation uncovered between ADHD and OCD, 48 out of 152 significant SNPs showed opposite direction of effects in the two disorders and were driven by the ADHD GWAS (Table S1). Accordingly, only five of the variants showed  $m$ -value  $> 0.9$  in both disorders, which can be mapped onto three independent risk loci (gene *SPAG16*, *FOXP2* and intergenic region on 4p16.3, table S1, S2). The top-association in the ADHD and OCD meta-analysis was found at rs113551349 ( $p = 5.25 \times 10^{-11}$ ,  $m_{\text{ADHD}} = 1$ ,  $m_{\text{OCD}} = 0.795$ ) on chromosome 1, an intronic region of gene *SLC6A9*. On the other hand, the top SNP showing  $m$ -value  $> 0.9$  in both disorders was rs9677504 ( $p = 8.04 \times 10^{-10}$ ,  $m_{\text{ADHD}} = 1$ ,  $m_{\text{OCD}} = 0.995$ ) on chromosome 1, gene *SPAG16*.

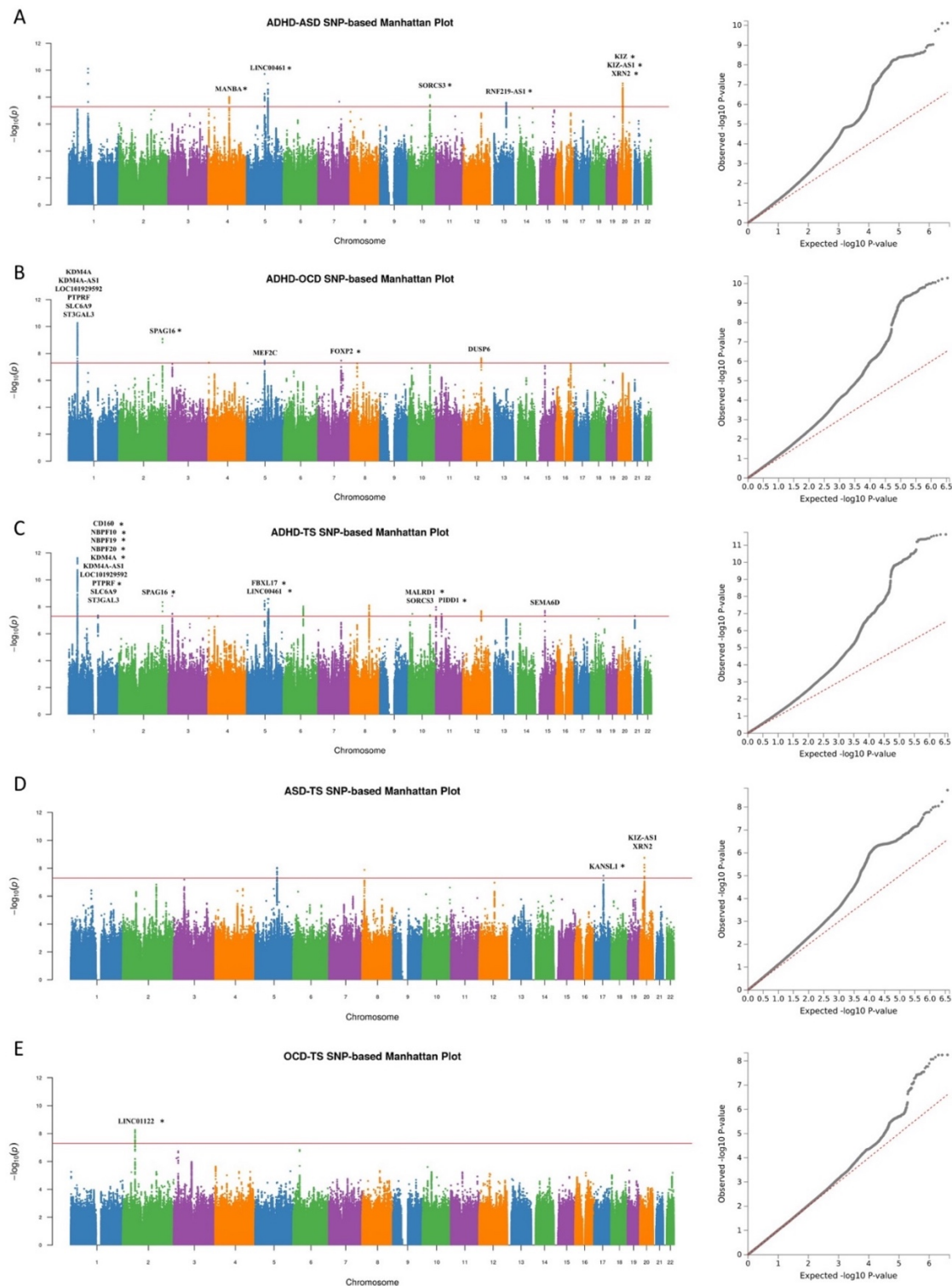


**Figure 1.** Cross-disorder ADHD-ASD-OCD-TS GWAS SNP-based meta-analysis. A. Manhattan plot and QQ plot for ADHD-ASD-OCD-TS GWAS meta-analysis. Genes harboring genome-wide significant SNPs are shown. An asterisk (\*) indicates genes hosting SNPs with  $m$ -value  $> 0.9$  in at least three disorders.; B. Forest plots for the top three SNPs; C. Forest plots for SNPs with  $m$ -value  $> 0.8$  in all studied disorders; D. Regional plot for top three independent genetic loci.

Analysis across ADHD and TS was performed over 6,815,758 overlapping variants ( $\lambda_{\text{ADHD-TS}} = 1.2230$ ,  $\lambda_{1000} = 1.0074$ ), showing no sign of inflation. A total of 372 significant SNPs were identified (Figure 2, Table S1). The significant SNPs fell onto 16 independent genomic regions, six of which were novel (including variants at genes *CD160*, *NBPF10*, *NBPF19*, *NBPF20*, *FBXL17*, *MALRDI*, and *PIDDI*) (Table S2). All significant SNPs shared the same direction of effect, with almost half them ( $n=162$ ) associated with  $m$ -values  $> 0.9$  for both disorders studied and corresponding to as many as 12 different regions (Table S1, S2). The top-result was located on chromosome 1, rs112361411 and was possibly driven by the ADHD GWAS ( $p = 2.30 \times 10^{-12}$ ,  $m_{\text{ADHD}} = 1$ ,  $m_{\text{TS}} = 0.477$ ). This variant resides within a non-coding RNA gene *LOC101929592* and was also detected in the individual GWAS on ADHD. On the other hand, the top result with high probability of shared effect across ADHD and TS was rs4660740 ( $p = 4.07 \times 10^{-12}$ ,  $m_{\text{ADHD}} = 1$ ,  $m_{\text{TS}} = 0.909$ ) on chromosome 1, gene *KDM4A*. This locus has been previously associated with ADHD.

ASD and TS available GWAS datasets shared 7,499,503 SNPs. We found  $\lambda_{\text{ASD-TS}} = 1.1440$ ,  $\lambda_{1000} = 1.0052$ , showing no sign of inflation. A total of 15 SNPs were genome-wide significant (Figure 2, Table S1). Four independent genomic risk regions were highlighted, one of which (at gene *KANSL1*) was not identified in either individual disorder GWAS (Table S2). The top-result, which had also been detected in the ASD GWAS, was rs1000177 ( $p = 1.79 \times 10^{-9}$ ,  $m_{\text{ASD}} = 1$ ,  $m_{\text{TS}} = 0.758$ ) on chromosome 20. It is found in an intergenic region nearby *KIZ* (distance = 5,940 bp). As stated earlier here, this gene was also among the top- results of our four-disorder combined meta-analysis as well as the ADHD-ASD meta-analysis. All the significant SNPs had the same direction of effect in both disorders. Eight of the significant SNPs had  $m$ -values  $> 0.9$  for both ASD and TS corresponding to two genomic risk regions (Table S1). Highest probability of shared effect for both ASD and TS was found for rs325506 ( $p = 9.42 \times 10^{-9}$ ,  $m_{\text{ASD}} = 1$ ,  $m_{\text{TS}} = 0.984$ ) which lies on an intergenic region of chromosome 5.

Across the OCD and TS GWAS, 8,112,469 overlapping variants were available for analysis ( $\lambda_{\text{OCD-TS}} = 1.0020$ ,  $\lambda_{1000} = 1.0002$ ). No genome-wide significant SNP had been identified in the individual GWAS of OCD, and only a limited number of significant variants were revealed in the TS GWAS. In the meta-analysis across TS and OCD, we found 21 genome-wide significant variants (top-result rs140347666 ( $p = 5.64 \times 10^{-9}$ ,  $m_{\text{OCD}} = 0.999$ ,  $m_{\text{TS}} = 1$ ); Figure 2, Table S1, S2); all significant SNPs were located in the same genomic risk region (chromosome 2, non-coding RNA gene *LINC01122*) and had the same direction of effect. All 21 SNP showed  $m$ -values  $> 0.9$  for both TS and OCD, indicating high homogeneity across both disorders.

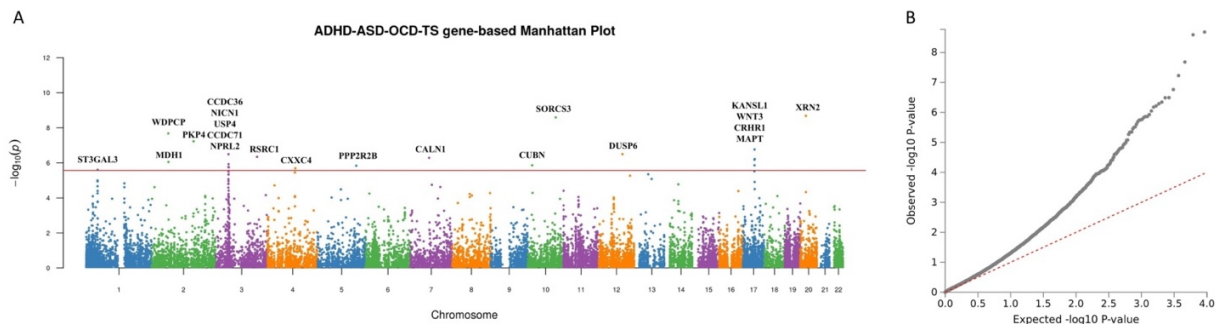


**Figure 2.** Manhattan plots and QQ plots for pairwise cross-disorder GWAS meta-analyses. An asterisk (\*) indicates genes hosting SNPs with  $m$ -value  $> 0.9$  in both disorders. A. ADHD-ASD GWAS meta-analysis; B. ADHD-OCD GWAS meta-analysis; C. ADHD-TS GWAS meta-analysis; D. ASD-TS GWAS meta-analysis; E. OCD-TS GWAS meta-analysis.



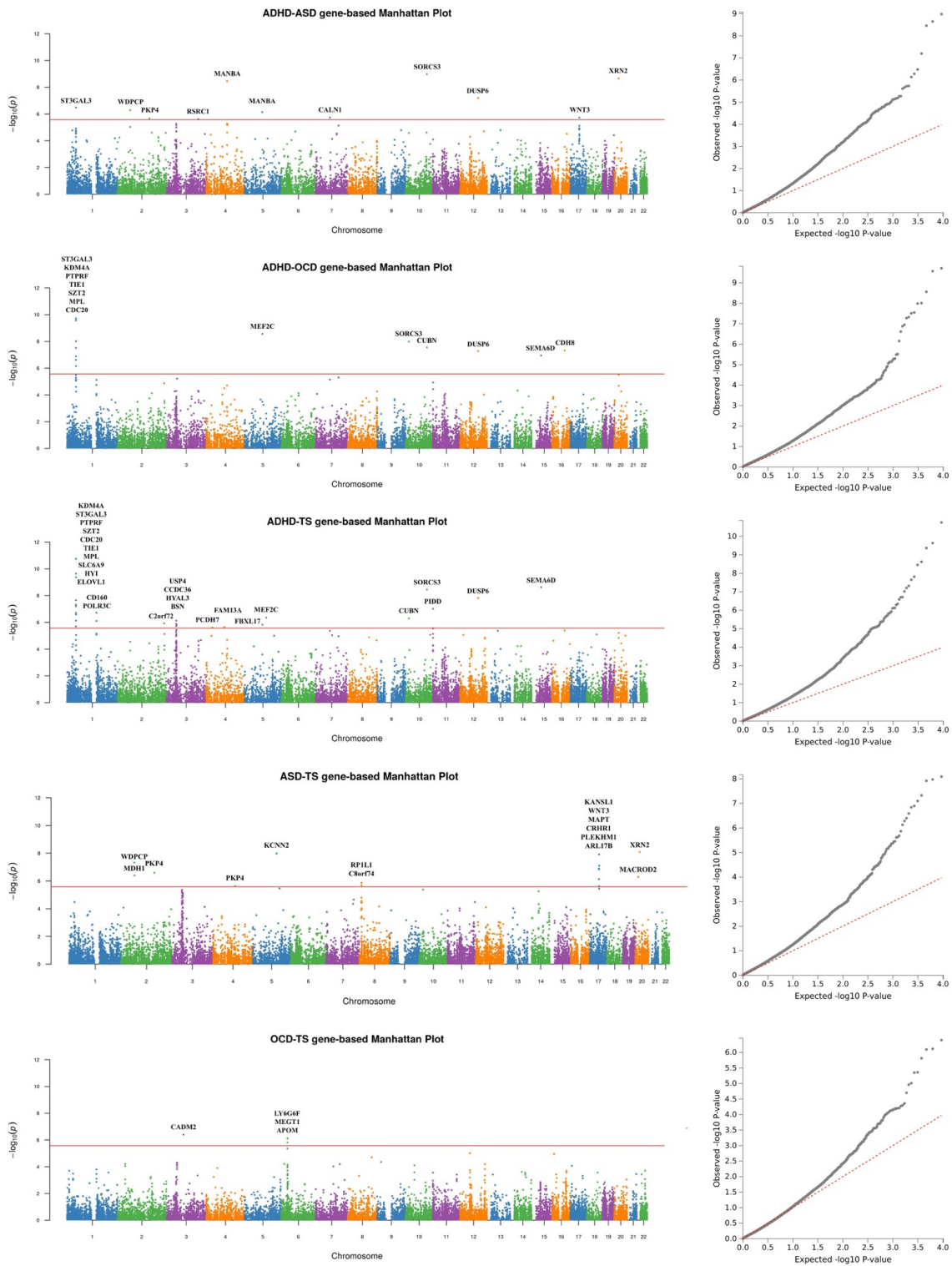
### Cross-disorder gene-based association and tissue-specificity analysis

We proceeded to perform gene-based and tissue-specificity analysis across ADHD, ASD, OCD, TS. With 18,450 protein-coding genes tested, the significance threshold for our gene-based analysis for the four-disorder combined meta-analysis (ADHD, ASD, OCD, TS) was  $2.71 \times 10^{-6}$  after Bonferroni correction. Our gene-based analysis highlighted 21 genes as significantly associated in the ADHD-ASD-OCD-TS meta-analysis. Out of those, 15 could not be identified as significant based on analysis of the individual disorder GWAS dataset, indicating increased power in the cross-disorder comparisons (Table S3). The top-result was *XRN2* ( $p = 2.08 \times 10^{-9}$ ) on chromosome 20 (Figure 3, Table S3). The full list of significant results from our gene-based analysis for all four disorders as well as comparisons to results from the pairwise meta-analyses can be found in Figure 4 and Table S3. No gene was significant across all six meta-analyses while eight genes were found significant in three or more analyses (Table S3).



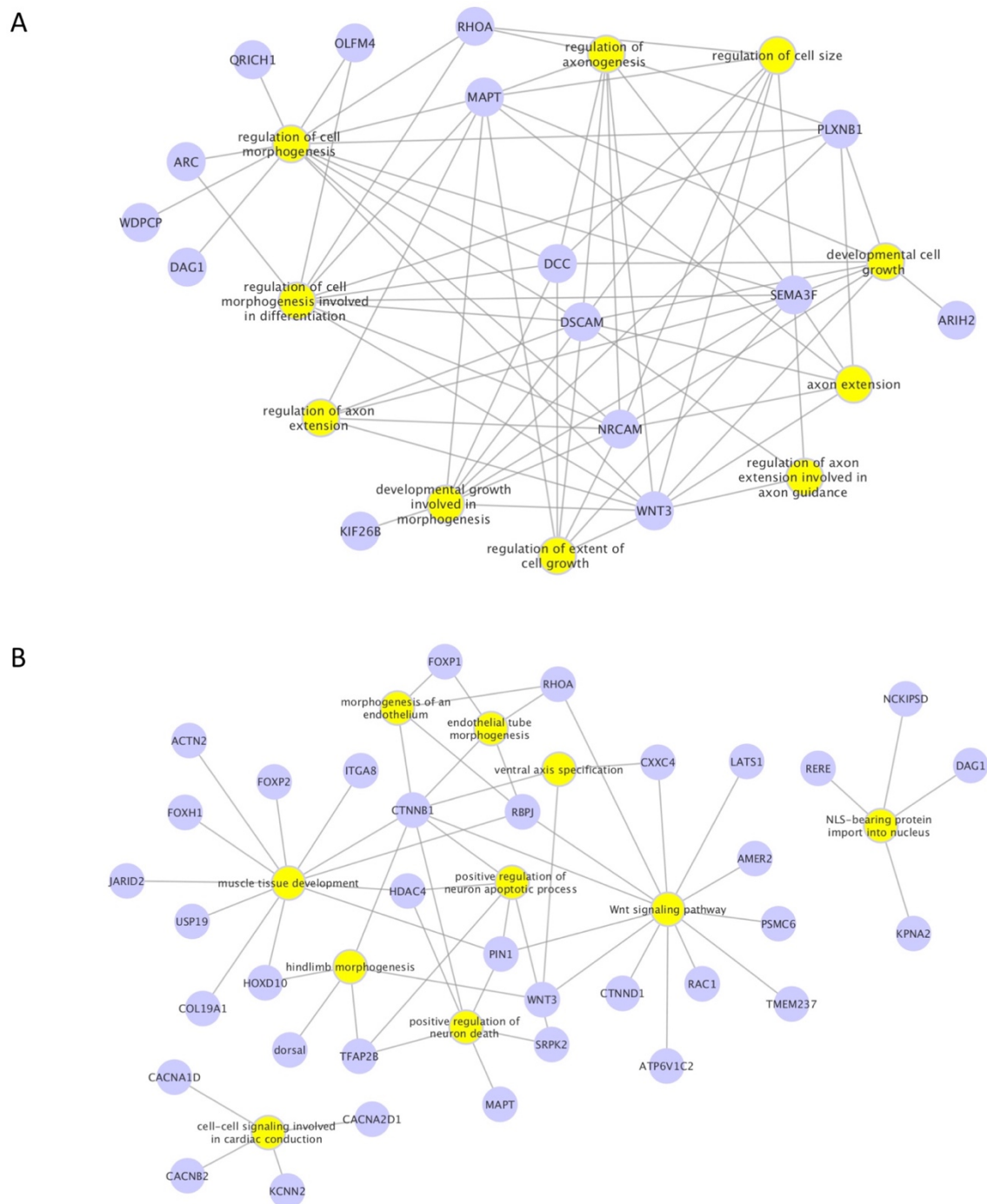
**Figure 3.** ADHD-ASD-OCD-TS cross-disorder gene-based GWAS meta-analysis. Manhattan plot (A) and QQ plot (B).

In order to better visualize our results while investigating the pathways and interactions among the top risk genes across ADHD, OCD, ASD and TS, we constructed GO-based networks for the top 200 genes from each gene-based association analysis as well as genes annotated from the SNP-based GWAS meta-analyses. Results are shown in Figure 5 and Figure S1-S5. Pathways related to neuronal development, axonogenesis, and synaptic structure and organization were highlighted among the most significant in our analysis. These results were further strengthened by gene-property analyses, which showed enrichment of our top associated loci in genes expressed in brain tissues (Figure 6). In the tissue specificity analysis based on the ADHD-ASD-OCD-TS GWAS meta-analysis results, significant enrichment was found for genes expressed in the basal ganglia, hypothalamus, areas of the frontal cortex, and in the anterior cingulate cortex (Table S4). Additional brain regions implicated by our analysis were frontal cortex, cerebellum, amygdala, and hippocampus (Table S4). Furthermore, enrichment for genes expressed in the pituitary was also found among the top implicated regions from the ADHD-ASD-OCD-TS, ADHD-ASD and ADHD-TS GWAS meta-analyses. Intriguingly, besides showing enrichment of gene expression



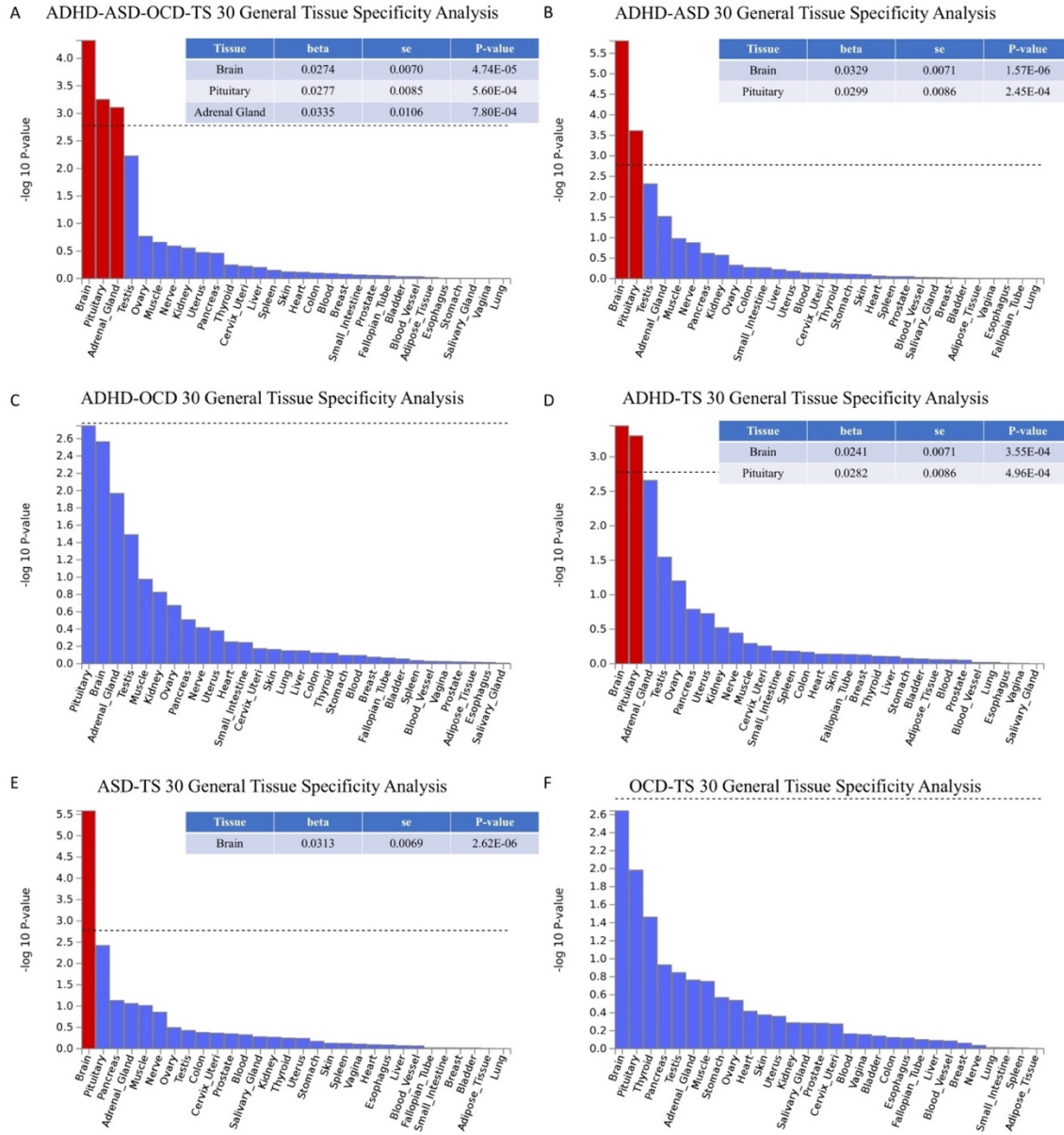
**Figure 4.** Manhattan plots for pairwise gene-based GWAS meta-analyses. A. ADHD-ASD gene-based analysis; B. ADHD-OCD gene-based analysis; C. ADHD-TS gene-based analysis; D. ASD-TS gene-based analysis; E. OCD-TS gene-based analysis.





**Figure 5.** Gene networks for top genes in cross-disorder ADHD-ASD-OCD-TS GWAS meta-analysis. **A.** Top ten gene networks based on top 200 genes from SNP-based ADHD-ASD-OCD-TS meta-analyses results. **B.** Top ten gene networks based on top 200 genes from ADHD-ASD-OCD-TS gene-based analyses.

in the brain (including hypothalamus, Figure S6), and pituitary, the four-disorder combined cross-disorder analysis also identified an enrichment of gene expression in the adrenal gland thus pointing to involvement of the Hypothalamus-Pituitary-Adrenal gland axis across ADHD, ASD, OCD, and TS (Figure 6, S6 and Table S4).



**Figure 6.** ADHD-ASD-OCD-TS cross-disorder tissue specificity analysis testing 30 general tissue types from GTEx v7 tissue expression atlas. Red bar indicates significant enrichment of gene expression in corresponding tissue under Bonferroni correction ( $p < 1.67 \times 10^{-3}$ ). Panel on top right corner of each figure shows detailed statistics for significantly enriched tissue. A. ADHD-ASD-OCD-TS cross-disorder tissue specific expression enrichment; B. ADHD-ASD cross-disorder tissue specific expression enrichment; C. ADHD-OCD cross-disorder tissue specific expression enrichment; D. ADHD-TS cross-disorder tissue specific expression enrichment; E. ASD-TS cross-disorder tissue specific expression enrichment; F. OCD-TS cross-disorder tissue specific expression enrichment.

## Transcriptome-wide association results

Next, we incorporated eQTL information into our meta-analyses and performed transcriptome-wide association analyses, aiming to identify genes with expression levels associated across the studied disorders. For the ADHD-ASD-OCD-TS combined transcriptome-wide analysis, we used a total of 6,710,493 SNPs from the meta-analysis summary statistics which also presented in both 1000Genome and the eQTL summary statistics. In total 7,295 transcript probes were analyzed, corresponding to a significance threshold of  $p_{SMR} < 6.85 \times 10^{-6}$ . Under this threshold, five transcript probes were significant, all located on chromosome 17. Two of them also satisfied the pleiotropy hypothesis, which indicates the existence of variants with a shared effect over both gene expression level and trait. Among all significant transcripts, the top-result was from the *LRRC37A4P* probe ( $p_{SMR} = 2.20 \times 10^{-6}$ ,  $p_{HEIDI} = 0.0843$ ). This corresponds to the transcript of a pseudogene in region 17q21.3, localizing near *KANSL1*. The two significant, pleiotropic transcripts also turned out to be significant in the ASD-TS pairwise analysis we performed. Comparison of significant results obtained from all meta-analyses can be found in Table 3.

**Table 3.** Significant results from Transcriptome-wide association analyses.  $p_{SMR}$  =  $p$ -value for transcriptome-wide association analysis;  $P_{HEIDI}$  =  $p$ -value for heterogeneity in dependent instruments (HEIDI) test.  $P_{HEIDI} > 0.05$  indicates a pleiotropic SNP effect over both the trait and the probe expression.

CHR	Gene	ADHD-ASD-OCD-TS				ADHD-TS				ASD-TS			
		Beta	SE	$p_{SMR}$	$P_{HEIDI}$	Beta	SE	$p_{SMR}$	$P_{HEIDI}$	Beta	SE	$p_{SMR}$	$P_{HEIDI}$
11	AP006621.1					0.0491	0.0109	6.67E-06	5.63E-01				
11	AP006621.5					0.0540	0.0110	9.73E-07	1.42E-01				
17	LRRC37A4P	-0.0333	0.0070	2.20E-06	8.43E-02					-0.0561	0.0112	5.58E-07	1.68E-01
17	RP11-707O23.5	0.0308	0.0067	3.90E-06	8.45E-02					0.0536	0.0106	3.83E-07	8.53E-02
17	RP11-798G7.6									0.1239	0.0268	3.78E-06	4.87E-01
17	KANSL1-AS1									0.0487	0.0104	3.09E-06	5.26E-02
17	RP11-259G18.2									0.0512	0.0104	9.33E-07	1.48E-01
18	MPPE1									-0.0632	0.0139	5.89E-06	1.76E-01

We also ran transcriptome-wide association analyses for each individual disorder. After Bonferroni correction, significant results were only observed for ADHD and ASD. For ADHD, out of 7,295 probes tested, one was found significant (with  $p_{SMR} < 6.85 \times 10^{-6}$  as significance threshold) without showing heterogeneity of effect over expression and trait ( $p_{SMR} = 6.25 \times 10^{-6}$ ,  $p_{HEIDI} = 0.136$ ). This probe tags *PIDD* on chromosome 11. For ASD (7,445 probes tested, with  $p_{SMR} < 6.72 \times 10^{-6}$  as significance threshold), probes for *LRRC37A4P* ( $p_{SMR} = 2.22 \times 10^{-6}$ ,  $p_{HEIDI} = 0.110$ ) and *RP11-259G18.2* ( $p_{SMR} = 4.37 \times 10^{-6}$ ,  $p_{HEIDI} = 0.277$ ) on chromosome 17 were significant.

## Discussion

To our knowledge, this is the first study focusing on the detailed investigation of the shared genetic basis across ADHD, ASD, OCD and TS. Using available GWAS summary statistics for each individual disorder, we uncovered clues to the potential etiological overlap that may underlie the studied phenotypes. Pairwise LD-score regression results were concordant with previous PGC analysis (20), indicating high genetic correlations across the spectrum of studied phenotypes with two exceptions that have also been previously reported (20): the genetic correlation between ASD and OCD was not significant and there was a negative genetic correlation between ADHD and OCD. The lack of significant correlation between ADHD and OCD could potentially be due to the limited sample size of the OCD dataset. On the other hand, the negative genetic correlation between ADHD and OCD indicates that genetic variants operate in opposite directions in the development of these two disorders. From a clinical perspective, this is quite intuitive since ADHD and OCD may be thought of as lying at opposite extremes of the impulsivity-compulsivity continuum.

We successfully uncovered 297 genome-wide significant variants from six LD-independent genomic risk regions in the ADHD-ASD-OCD-TS GWAS cross-disorder meta-analysis. Interestingly, out of all the significant SNPs, as many as 261 could not be identified as significant at a genome-wide level based on any of the individual disorder GWAS datasets, indicating a boosted statistical power through the meta-analysis. All the significant results showed evidence of shared effect in at least two of the disorders, and 199 SNPs (mapping onto four genomic regions), showed high probability of association in three of the four disorders (as defined by  $m\text{-value} > 0.9$ ). The top-significant genomic risk locus showing also high probability for association across the studied disorders was region 20p11.23. Our top genomic risk locus had also been previously identified as significant in the individual ASD GWAS (15) and was also found significant in all our meta-analyses described here with the ASD GWAS involved. Furthermore, this region was also found significant in the eight psychiatric disorder meta-analysis carried out by the Cross-Disorder Group of the Psychiatric Genomics Consortium (20) with leading SNP rs6047287,  $p = 2.72 \times 10^{-10}$ ). Gene *KIZ* hosts many of the top significant SNPs uncovered by our cross-disorder meta-analysis. It is widely expressed in diverse human tissues and is involved in cell mitosis. It is a core gene in the Polo-Like Kinase 1 (*PLK1*) pathway and is critical for regulating human spindle-pole formation (51,52). Previous work has shown that neurogenesis and the earliest phases of neuronal differentiation are compromised by spindle misorientation (51). Furthermore, *KIZ* is associated with systemic lupus erythematosus (53), and peanut allergy (54). These associations indicate a possible role of *KIZ* in immune response, a mechanism which is also implicated in TS etiology (55). Our ADHD-ASD-OCD-TS cross-disorder GWAS meta-analysis also highlighted the role of genomic regions 5q21.2 and 5q14.3 with significant effects contributed by ADHD, ASD, and TS. Duplication of the 5q21.2 region has been previously reported as a clinically significant copy number variation (CNV) in schizophrenia (56)

The top result from our four-disorder gene-based analysis was *XRN2* (ADHD/OCD/ASD/TS-p =  $2.08 \times 10^{-9}$ , ADHD/ASD-p =  $2.24 \times 10^{-9}$ , ASD/TS-p =  $8.11 \times 10^{-9}$ ). This gene is widely expressed in various human tissues and encodes an essential nuclear 5'→3' exoRNase with many functions in the processing and regulation of RNA molecules (57). It has been previously associated with ASD (15,58). Furthermore, a recent large-scale transcriptome association study in ASD identified significant differential expression and splicing of *XRN2* in ASD, further suggesting a functional role of *XRN2* in this neurodevelopmental disorder (58).

*SORCS3* (ADHD/OCD/ASD/TS-p =  $2.56 \times 10^{-9}$ , ADHD/ASD-p =  $1.04 \times 10^{-9}$ , ADHD/OCD-p =  $2.82 \times 10^{-8}$ , ADHD/TS-p =  $3.51 \times 10^{-9}$ ) was the second top-gene in the four-disorder gene-based meta-analysis. This gene encodes a member of the vacuolar protein sorting 10 (VPS10) receptor family, which controls intracellular protein signaling in neurons and regulates neuronal viability through many pathways (59). It is highly expressed in brain tissues (36), and it has been previously implicated in neurological disease including ADHD and ASD etiology (13,15). Multiple studies indicate a relationship between *SORCS3* and the accumulation of amyloid, which is linked to Alzheimer disease (60,61). It is also associated with major depression in individuals of European descent (62). Moreover, its interaction with postsynaptic proteins, such as *PICK1*, indicates that the product of *SORCS3* regulates glutamate receptor function (63,64). As one of the major neurotransmitters in the human brain, the glutamate pathway has long been hypothesized to underlie abnormalities in ADHD, ASD, OCD, and TS and is a possible therapeutic target for these disorders (65–68).

Several of our top findings, including the *SORCS3* region on chromosome 10, the *KIZ* region on chromosome 20, and an intergenic region on chromosome 5, were also reported as genomewide significant in the recent GWAS meta-analysis of the PGC seeking pleiotropic loci across a broad spectrum of eight psychiatric disorders, including the four that are the focus of our study here (20). In fact, *SORCS3* and region chr5: 103,791,044-104,055,261 were reported among those genomic regions with broad cross-disorder association across the eight psychiatric disorders analyzed (20), indicating that they may have a general effect over neuropsychiatric disorders rather than specific for the disorders of high comorbidity and high prevalence in childhood and adolescence that we analyzed here. On the other hand, the two regions (region 18q21.2, gene *DCC* and region 16p13.3, gene *RBFOX1*) that were revealed as the most broadly pleiotropic in the PGC cross-disorder analysis were not found genomewide significant here, possibly due to differences in sample composition. Note however, that *DCC* is indeed revealed as one of the nodes in the gene-network analysis of the top 200 genes annotated from the SNP-based analysis for ADHD-ASD-OCD-TS, ADHD-OCD, ADHD-TS and network obtained from top 200 genes of the gene-based analysis for ADHD-ASD that we performed (Figure 5, Figure S2).

Among the top genes that we found associated in the ADHD-ASD-OCD-TS GWAS meta-analysis, we observed enrichment for genes expressed in the brain. Our results provide further support for the involvement of the basal ganglia across all disorders analyzed here. Dysfunction of the basal



ganglia has been observed in all four studied disorders (69–72). Interestingly, our analyses also implicate the involvement of the hypothalamus-pituitary-adrenal (HPA) axis, in accordance with previous studies implicating this system in multiple childhood-onset psychiatric traits including ADHD and TS (73–77). The HPA axis plays a critical role in human stress response through the regulation of cortisol secretion (78). Low-cortisol responsivity to stress was proposed as a biomarker for certain types of ADHD, indicating a possibly altered HPA axis activity in this disorder (79). Altered cortisol levels among TS individuals have also been reported, with a negative correlation between evening cortisol and patients' tic severity and higher cortisol levels in response to stress. Both observations further support the potential involvement of the HPA axis (80).

Gene ontology analyses highlighted the involvement of pathways related to neuronal development, cell adhesion, axonogenesis, synaptic structure, and synaptic organization. Furthermore, many of our top associated genes had been previously associated with intelligence (81), cognitive abilities (82), depressive symptoms (83), neuroticism (84), and neurological disorders such as Parkinson disease (85). Based on the observation that enriched gene expression was found in brain tissues for most of the disorder combinations we also investigated, transcriptome-wide association analysis was carried out to highlight genes for which a variation in brain gene expression may be causally linked to phenotypes of interest. Our results highlight the role of genomic region 17q21.3 as a locus shared by all four disorders. This region was also identified as an independent genomic risk region from our annotation for SNP-based analyses. The top result of our four-disorder combined transcriptome-wide analysis was from transcript of *LRRC37A4P*. Even though it is a pseudogene, altered transcription levels of this probe have been observed in multiple neurological conditions, including Alzheimer disease and ASD (86–89). Furthermore, the implicated region has been previously found as contributing to various neurodevelopmental or neurodegeneration processes (90–94).

Although we provide results on the largest available combined dataset across ADHD, ASD, OCD, and TS, available datasets varied in size for each of the studied disorders. The unbalanced sample size across the studied datasets is one of the limitations of our study with results sometimes driven by the larger studies and greater difficulty in uncovering loci of importance for under-represented disorders. In order to mitigate this problem, we ran analyses using different pairwise combinations of disorders and we placed emphasis on investigating and reporting the SNP posterior probability of association (m-value) for each disorder in order to allow better interpretation of results and provide higher confidence for shared effect across multiple disorders. Existing overlap across the studied samples was another challenge (< 6% case overlap in the datasets that we studied). In order to tackle this problem, we used ASSET, which takes into account known sample overlap to control the inflation in meta-analysis results.

In conclusion, through a series of systematic genome-wide association meta-analyses we uncovered multiple loci that may underlie biological mechanisms across ADHD, ASD, OCD, and



TS. Our results provide further support for the hypothesis of a common etiological basis across this spectrum of often comorbid neurodevelopmental phenotypes. Both the *SORCS3* region and the intergenic region 5q21.2 that were picked up by our study on the four related disorders, were also highlighted as highly pleiotropic loci in the eight-disorders study by the Cross-Disorder Group of the Psychiatric Genomics Consortium (20), indicating a broader functional impact of these regions across multiple psychiatric disorders. However, here we also identify many additional genes and genomic risk loci that could play a more specific role across the spectrum of the ADHD, ASD, OCD, TS phenotypes. The existing evidence for a common genetic background across these highly comorbid disorders highlights what seems to become a recurrent theme across the studies on neuropsychiatric disorders: the importance of thinking across diagnostic boxes when attempting to understand neurobiology. Towards this end, large well-characterized cohorts of patients will be necessary as well as the harmonization of existing clinical databases spanning the disorder spectrum. Analyzing across a spectrum of intermediate phenotypes may hold the promise to identify novel targets for improved therapies focusing on an individual patient rather than a broadly defined diagnostic category.

## Supplementary Material

### Supplementary Tables – Legends

**Table S1.** Summary statistics for all significant results from SNP-based GWAS meta-analyses across ADHD, ASD, OCD, TS (four-disorder and pairwise analysis, each in corresponding worksheet). *m-value* = Posterior probability for association for each individual disorder; *SIFT/Poly1/Poly2* = functional prediction for nonsynonymous exonic SNPs; *HetISq* = heterozygosity  $I^2$  statistic; *HetChiSq* = heterozygosity chi-square statistic; *HetPVal* = heterozygosity test p-value; *disorder-OR/P* = odds ratio statistic and p-value in the original individual disorder GWAS study.

**Table S2.** Full annotation of top genomic risk regions from SNP-based GWAS meta-analyses. An asterisk (\*) indicates novel LD regions not been reported associated with corresponding traits in published GWAS. *rsID* = rsID of the leading SNP of the region; *p* = p-value of the leading SNP from the meta-analysis; *Study* = Previous studies reporting significant association at this locus; *trait* = trait reported associated with the locus by the study; *reported gene* = gene reported by the study; *mapped gene* = gene mapped onto the reported region.

**Table S3.** Significant genes from gene-based GWAS analyses. Also showing p-values from each individual disorder gene-based analyses.

**Table S4.** Significant results from cross-disorder ADHD-ASD-OCD-TS tissue specificity analysis, testing 53 tissue types from GTEx v7 tissue expression atlas. Significant threshold is subjective to Bonferroni correction ( $p < 9.43 \times 10^{-4}$ )

## Supplementary Figures – Legends

**Figure S1.** Top ten gene networks from top 200 genes annotated from SNP-based GWAS meta-analyses results and gene-based analysis results. A. ADHD-ASD SNP-based network plot; B. ADHD-ASD gene-based network plot.

**Figure S2.** Top ten gene networks from top 200 genes annotated from SNP-based GWAS meta-analyses results and gene-based analysis results. A. ADHD-OCD SNP-based network plot; B. ADHD-OCD gene-based network plot.

**Figure S3.** Top ten gene networks from top 200 genes annotated from SNP-based GWAS meta-analyses results and gene-based analysis results. A. ADHD-TS SNP-based network plot; B. ADHD-TS gene-based network plot.

**Figure S4.** Top ten gene networks from top 200 genes annotated from SNP-based GWAS meta-analyses results and gene-based analysis results. A. ASD-TS SNP-based network plot; B. ASD-TS gene-based network plot.

**Figure S5.** Top ten gene networks from top 200 genes annotated from SNP-based GWAS meta-analyses results and gene-based analysis results. A. OCD-TS SNP-based network plot; B. OCD-TS gene-based network plot.

**Figure S6.** ADHD-ASD-OCD-TS cross-disorder tissue specificity analysis, testing 53 tissue types from GTEx v7 tissue expression atlas. Red bar indicates significant enrichment of gene expression in corresponding tissue under Bonferroni correction ( $p < 9.43 \times 10^{-4}$ ). Panel on top right corner of each figure shows detailed statistics for significantly enriched tissue. A. ADHD-ASD-OCD-TS cross-disorder tissue specific expression enrichment; B. ADHD-ASD cross-disorder tissue specific expression enrichment; C. ADHD-OCD cross-disorder tissue specific expression enrichment; D. ADHD-TS cross-disorder tissue specific expression enrichment; E. ASD-TS cross-disorder tissue specific expression enrichment; F. OCD-TS cross-disorder tissue specific expression enrichment.

## Acknowledgements

This work was made possible thanks to the concerted efforts of the Psychiatric Genomics Consortium Cross-disorder Working Group, the Lundbeck Foundation Initiative for Integrative Psychiatric Research (iPSYCH), the Psychiatric Genomics Consortium ADHD Working Group,

the Psychiatric Genomics Consortium ASD Working Group, and the Psychiatric Genomics Consortium TS/OCD Working Group.

### **Funding**

Barbara Franke is supported by a personal grant from the Innovation Program of the Netherlands Organisation for Scientific Research (NWO; grant 016-130-669). Her work is also supported by grants from the European Community's Horizon 2020 Programme (H2020/2014 – 2020) under grant agreements n° 667302 (CoCA) and n° 728018 (Eat2beNICE). Dr. Faraone is supported by the European Union's Seventh Framework Programme for research, technological development and demonstration under grant agreement no 602805 (Aggressotype), the European Union's Horizon 2020 research and innovation programme under grant agreements No 667302 (CoCA) & 728018 (Eat2beNICE) and NIMH grants 5R01MH101519 and U01 MH109536-01. Dr Paschou is supported by an NSF grant #1715202.

### **Conflicts of interest**

Barbara Franke has received educational speaking fees from Medice. Benjamin M. Neale is a member of the scientific advisory board at Deep Genomics. In the past year, Dr. Faraone received income, potential income, travel expenses continuing education support and/or research support from Tris, Otsuka, Arbor, Ironshore, Shire, Akili Interactive Labs, Enzymotec, Sunovion, Supernus and Genomind. With his institution, he has US patent US20130217707 A1 for the use of sodium-hydrogen exchange inhibitors in the treatment of ADHD. He also receives royalties from books published by Guilford Press: *Straight Talk about Your Child's Mental Health*, Oxford University Press: *Schizophrenia: The Facts* and Elsevier: *ADHD: Non-Pharmacologic Interventions*. He is principal investigator of [www.adhdinadults.com](http://www.adhdinadults.com). Jordan Smoller is an unpaid member of the Bipolar/Depression Research Community Advisory Panel of 23andMe. Carol Mathews is the co-chair of the Scientific Advisory Board of the Tourette Association of America and is on the Scientific Advisory Board of the International OCD Foundation.

### **References**

1. Newschaffer CJ, Croen LA, Daniels J, Giarelli E, Grether JK, Levy SE, et al. The Epidemiology of Autism Spectrum Disorders. *Annu Rev Public Health*. 2007;28(1):235–58.
2. Polanczyk G, De Lima MS, Horta BL, Biederman J, Rohde LA. The worldwide prevalence of ADHD: A systematic review and metaregression analysis. *Am J Psychiatry*. 2007;164(6):942–8.
3. Ruscio AM, Stein DJ, Chiu WT, Kessler RC. The epidemiology of obsessive-compulsive disorder in the National Comorbidity Survey Replication. *Mol Psychiatry*. 2010;15(1):53–63.

4. Robertson MM, Eapen V, Singer HS, Martino D, Scharf JM, Paschou P, et al. Gilles de la Tourette syndrome. *Nat Rev Dis Prim* [Internet]. 2017 Feb 2 [cited 2018 Nov 6];3:16097. Available from: <http://www.nature.com/articles/nrdp201697>
5. Hirschtritt ME, Lee PC, Pauls DL, Dion Y, Grados MA, Illmann C, et al. Lifetime Prevalence, Age of Risk, and Genetic Relationships of Comorbid Psychiatric Disorders in Tourette Syndrome. *JAMA Psychiatry* [Internet]. 2015 Apr 1 [cited 2019 May 7];72(4):325. Available from: <http://archpsyc.jamanetwork.com/article.aspx?doi=10.1001/jamapsychiatry.2014.2650>
6. Karagiannidis I, Tsetsos F, Padmanabhuni SS, Alexander J, Georgitsi M, Paschou P. The Genetics of Gilles de la Tourette Syndrome: a Common Aetiological Basis with Comorbid Disorders? *Curr Behav Neurosci Reports*. 2016;3(3):218–31.
7. Cravedi E, Deniau E, Giannitelli M, Xavier J, Hartmann A, Cohen D. Tourette syndrome and other neurodevelopmental disorders: a comprehensive review. *Child Adolesc Psychiatry Ment Health* [Internet]. 2017 Dec 4 [cited 2019 May 7];11(1):59. Available from: <https://capmh.biomedcentral.com/articles/10.1186/s13034-017-0196-x>
8. Hollander E. Obsessive-compulsive disorder and spectrum across the life span. *Int J Psychiatry Clin Pract*. 2005;9(2):79–86.
9. Paschou P, Fernandez T V, Sharp F, Heiman GA, Hoekstra PJ. Genetic susceptibility and neurotransmitters in tourette syndrome. *Int Rev Neurobiol*. 2013;112:155–77.
10. Browne HA, Gair SL, Scharf JM, Grice DE. Genetics of obsessive-compulsive disorder and related disorders. *Psychiatr Clin North Am*. 2014;37(3):319–35.
11. Faraone S V, Asherson P, Banaschewski T, Biederman J, Buitelaar JK, Ramos-Quiroga JA, et al. Attention-deficit/hyperactivity disorder. *Nat Rev Dis Prim*. 2015;1.
12. Vorstman JAS, Parr JR, Moreno-De-Luca D, Anney RJL, Nurnberger Jr JI, Hallmayer JF. Autism genetics: opportunities and challenges for clinical translation. *Nat Rev Genet*. 2017;18(6):362–76.
13. Demontis D, Walters RK, Martin J, Mattheisen M, Als TD, Agerbo E, et al. Discovery of the first genome-wide significant risk loci for attention deficit/hyperactivity disorder. *Nat Genet* [Internet]. 2019 Jan 26 [cited 2019 Jun 18];51(1):63–75. Available from: <http://www.ncbi.nlm.nih.gov/pubmed/30478444>
14. Autism Spectrum Disorders Working Group of The Psychiatric Genomics Consortium. Meta-analysis of GWAS of over 16,000 individuals with autism spectrum disorder highlights a novel locus at 10q24.32 and a significant overlap with schizophrenia. *Mol Autism* [Internet]. 2017 Dec 22 [cited 2018 Jun 20];8(1):21. Available from: <http://molecularautism.biomedcentral.com/articles/10.1186/s13229-017-0137-9>

15. Grove J, Ripke S, Als TD, Mattheisen M, Walters RK, Won H, et al. Identification of common genetic risk variants for autism spectrum disorder. *Nat Genet* [Internet]. 2019 Mar 25 [cited 2019 Jun 19];51(3):431–44. Available from: <http://www.nature.com/articles/s41588-019-0344-8>
16. Arnold PD, Askland KD, Barlassina C, Bellodi L, Bienvenu OJ, Black D, et al. Revealing the complex genetic architecture of obsessive–compulsive disorder using meta-analysis. *Mol Psychiatry* [Internet]. 2018 May 1 [cited 2018 May 25];23(5):1181–8. Available from: <http://www.ncbi.nlm.nih.gov/pubmed/28761083>
17. Yu D, Sul JH, Tsetsos F, Nawaz MS, Huang AY, Zelaya I, et al. Interrogating the Genetic Determinants of Tourette’s Syndrome and Other Tic Disorders Through Genome-Wide Association Studies. *Am J Psychiatry* [Internet]. 2019 Mar 1 [cited 2019 Jun 18];176(3):217–27. Available from: <http://www.ncbi.nlm.nih.gov/pubmed/30818990>
18. Santangelo SL, Pauls DL, Lavori PW, Goldstein JM, Faraone S V., Tsuang MT. Assessing risk for the Tourette spectrum of disorders among first-degree relatives of probands with Tourette syndrome. *Am J Med Genet* [Internet]. 1996 Feb 16 [cited 2019 Jun 18];67(1):107–16. Available from: <http://www.ncbi.nlm.nih.gov/pubmed/8678107>
19. Palumbo D, Maughan A, Kurlan R. Hypothesis III. Tourette syndrome is only one of several causes of a developmental basal ganglia syndrome. *Arch Neurol*. 1997;54(4):475–83.
20. Cross-Disorder Group of the Psychiatric Genomics Consortium, Lee PH, Anttila V, Won H, Feng Y-CA, Rosenthal J, et al. Genome wide meta-analysis identifies genomic relationships, novel loci, and pleiotropic mechanisms across eight psychiatric disorders. *bioRxiv* [Internet]. 2019 Jan 26 [cited 2019 May 11];528117. Available from: <https://www.biorxiv.org/content/10.1101/528117v1.abstract>
21. Anttila V, Bulik-Sullivan B, Finucane HK, Walters RK, Bras J, Duncan L, et al. Analysis of shared heritability in common disorders of the brain. *Science* (80- ) [Internet]. 2018 Jun 22 [cited 2019 Jun 18];360(6395):eaap8757. Available from: <http://www.ncbi.nlm.nih.gov/pubmed/29930110>
22. Taylor MJ, Martin J, Lu Y, Brikell I, Lundström S, Larsson H, et al. Genetic evidence for shared risks across psychiatric disorders and related traits in a Swedish population twin sample. *bioRxiv* [Internet]. 2017 Dec 15 [cited 2018 Dec 18];234963. Available from: <https://www.biorxiv.org/content/early/2017/12/15/234963>
23. Abdulkadir M, Londono D, Gordon D, Fernandez T V., Brown LW, Cheon K-A, et al. Investigation of previously implicated genetic variants in chronic tic disorders: a transmission disequilibrium test approach. *Eur Arch Psychiatry Clin Neurosci* [Internet]. 2018 Apr 29 [cited 2018 May 29];268(3):301–16. Available from:

- <http://link.springer.com/10.1007/s00406-017-0808-8>
24. Cross-Disorder Group of the Psychiatric Genomics Consortium. Identification of risk loci with shared effects on five major psychiatric disorders: a genome-wide analysis. *Lancet* [Internet]. 2013 [cited 2017 Feb 8]; Available from: <http://www.sciencedirect.com/science/article/pii/S0140673612621291>
  25. Lee SH, Ripke S, Neale BM, Faraone S V, Purcell SM, Perlis RH, et al. Genetic relationship between five psychiatric disorders estimated from genome-wide SNPs. *Nat Genet* [Internet]. 2013 Sep 11 [cited 2018 Jun 25];45(9):984–94. Available from: <http://www.nature.com/articles/ng.2711>
  26. Stewart SE, Yu D, Scharf JM, Neale BM, Fagerness JA, Mathews CA, et al. Genome-wide association study of obsessive-compulsive disorder. *Mol Psychiatry* [Internet]. 2013 Jul 14 [cited 2018 May 25];18(7):788–98. Available from: <http://www.ncbi.nlm.nih.gov/pubmed/22889921>
  27. Mattheisen M, Samuels JF, Wang Y, Greenberg BD, Fyer AJ, McCracken JT, et al. Genome-wide association study in obsessive-compulsive disorder: results from the OCGAS. *Mol Psychiatry* [Internet]. 2015 Mar [cited 2018 Jun 25];20(3):337–44. Available from: <http://www.ncbi.nlm.nih.gov/pubmed/24821223>
  28. Scharf JM, Yu D, Mathews CA, Neale BM, Stewart SE, Fagerness JA, et al. Genome-wide association study of Tourette’s syndrome. *Mol Psychiatry* [Internet]. 2013 Jun 14 [cited 2018 Feb 22];18(6):721–8. Available from: <http://www.nature.com/articles/mp201269>
  29. Bulik-Sullivan B, Finucane HK, Anttila V, Gusev A, Day FR, Loh P-R, et al. An atlas of genetic correlations across human diseases and traits. *Nat Genet* [Internet]. 2015 Nov [cited 2019 Jun 18];47(11):1236–41. Available from: <http://www.ncbi.nlm.nih.gov/pubmed/26414676>
  30. 1000 Genomes Project Consortium. A global reference for human genetic variation. *Nature* [Internet]. 2015 [cited 2017 Feb 8]; Available from: <http://www.nature.com/nature/journal/v526/n7571/abs/nature15393.html>
  31. Bhattacharjee S, Rajaraman P, Jacobs KB, Wheeler WA, Melin BS, Hartge P, et al. A Subset-Based Approach Improves Power and Interpretation for the Combined Analysis of Genetic Association Studies of Heterogeneous Traits. *Am J Hum Genet* [Internet]. 2012 May 4 [cited 2019 Mar 25];90(5):821–35. Available from: <https://www.sciencedirect.com/science/article/pii/S0002929712001590>
  32. Lin D-Y, Sullivan PF. Meta-Analysis of Genome-wide Association Studies with Overlapping Subjects. *Am J Hum Genet* [Internet]. 2009 Dec [cited 2019 Jan 28];85(6):862–72. Available from: <http://www.ncbi.nlm.nih.gov/pubmed/20004761>



33. Han B, Eskin E. Interpreting Meta-Analyses of Genome-Wide Association Studies. Kerr K, editor. *PLoS Genet* [Internet]. 2012 Mar 1 [cited 2019 Jan 24];8(3):e1002555. Available from: <https://dx.plos.org/10.1371/journal.pgen.1002555>
34. de Leeuw CA, Mooij JM, Heskes T, Posthuma D. MAGMA: Generalized Gene-Set Analysis of GWAS Data. Tang H, editor. *PLOS Comput Biol* [Internet]. 2015 Apr 17 [cited 2018 May 10];11(4):e1004219. Available from: <http://dx.plos.org/10.1371/journal.pcbi.1004219>
35. Watanabe K, Taskesen E, van Bochoven A, Posthuma D. Functional mapping and annotation of genetic associations with FUMA. *Nat Commun* [Internet]. 2017 Dec 28 [cited 2018 Nov 12];8(1):1826. Available from: <http://www.nature.com/articles/s41467-017-01261-5>
36. GTEx Consortium. Genetic effects on gene expression across human tissues. *Nature* [Internet]. 2017 Oct 11 [cited 2018 Sep 25];550(7675):204–13. Available from: <http://www.nature.com/doi/10.1038/nature24277>
37. Wang K, Li M, Hakonarson H. ANNOVAR: functional annotation of genetic variants from high-throughput sequencing data. *Nucleic Acids Res* [Internet]. 2010 Sep 1 [cited 2018 Jun 19];38(16):e164–e164. Available from: <https://academic.oup.com/nar/article-lookup/doi/10.1093/nar/gkq603>
38. Kumar P, Henikoff S, Ng PC. Predicting the effects of coding non-synonymous variants on protein function using the SIFT algorithm. *Nat Protoc* [Internet]. 2009 Jul 25 [cited 2018 Jun 20];4(7):1073–81. Available from: <http://www.nature.com/articles/nprot.2009.86>
39. Adzhubei I, Jordan DM, Sunyaev SR. Predicting Functional Effect of Human Missense Mutations Using PolyPhen-2. *Curr Protoc Hum Genet* [Internet]. 2013 Jan [cited 2018 Jun 20];76(1):7.20.1-7.20.41. Available from: <http://doi.wiley.com/10.1002/0471142905.hg0720s76>
40. Pruim RJ, Welch RP, Sanna S, Teslovich TM, Chines PS, Gliedt TP, et al. LocusZoom: regional visualization of genome-wide association scan results. *Bioinformatics* [Internet]. 2010 Sep 15 [cited 2019 Jan 25];26(18):2336–7. Available from: <http://www.ncbi.nlm.nih.gov/pubmed/20634204>
41. MacArthur J, Bowler E, Cerezo M, Gil L, Hall P, Hastings E, et al. The new NHGRI-EBI Catalog of published genome-wide association studies (GWAS Catalog). *Nucleic Acids Res* [Internet]. 2017 Jan 4 [cited 2018 Jun 19];45(D1):D896–901. Available from: <https://academic.oup.com/nar/article-lookup/doi/10.1093/nar/gkw1133>
42. Safran M, Dalah I, Alexander J, Rosen N. GeneCards Version 3: the human gene integrator. 2010 [cited 2017 Feb 8]; Available from:

- <http://database.oxfordjournals.org/content/2010/baq020.long>
43. Carithers L, Moore H. The genotype-tissue expression (GTEx) project. 2015 [cited 2017 Feb 8]; Available from: <http://online.liebertpub.com/doi/pdf/10.1089/bio.2015.29031.hmm>
  44. Papatheodorou I, Fonseca NA, Keays M, Tang YA, Barrera E, Bazant W, et al. Expression Atlas: gene and protein expression across multiple studies and organisms. *Nucleic Acids Res* [Internet]. 2018 Jan 4 [cited 2018 Jun 19];46(D1):D246–51. Available from: <http://academic.oup.com/nar/article/46/D1/D246/4641906>
  45. Yu G, Wang L-G, Han Y, He Q-Y. clusterProfiler: an R Package for Comparing Biological Themes Among Gene Clusters. *Omi A J Integr Biol* [Internet]. 2012 May [cited 2018 Dec 20];16(5):284–7. Available from: <http://www.ncbi.nlm.nih.gov/pubmed/22455463>
  46. Carlson M. org.Hs.eg.db: Genome wide annotation for Human. R Packag version 370 [Internet]. 2018 [cited 2018 Dec 20]; Available from: <https://bioconductor.org/packages/release/data/annotation/manuals/org.Hs.eg.db/man/org.Hs.eg.db.pdf>
  47. Boyle EI, Weng S, Gollub J, Jin H, Botstein D, Cherry JM, et al. GO::TermFinder--open source software for accessing Gene Ontology information and finding significantly enriched Gene Ontology terms associated with a list of genes. *Bioinformatics* [Internet]. 2004 Dec 12 [cited 2019 Jan 24];20(18):3710–5. Available from: <https://academic.oup.com/bioinformatics/article-lookup/doi/10.1093/bioinformatics/bth456>
  48. Zhu Z, Zhang F, Hu H, Bakshi A, Robinson MR, Powell JE, et al. Integration of summary data from GWAS and eQTL studies predicts complex trait gene targets. *Nat Genet* [Internet]. 2016 May 28 [cited 2018 Sep 25];48(5):481–7. Available from: <http://www.nature.com/articles/ng.3538>
  49. Qi T, Wu Y, Zeng J, Zhang F, Xue A, Jiang L, et al. Identifying gene targets for brain-related traits using transcriptomic and methylomic data from blood. *Nat Commun* [Internet]. 2018 Dec 11 [cited 2018 Sep 25];9(1):2282. Available from: <http://www.nature.com/articles/s41467-018-04558-1>
  50. Ng B, White CC, Klein H-U, Sieberts SK, McCabe C, Patrick E, et al. An xQTL map integrates the genetic architecture of the human brain's transcriptome and epigenome. *Nat Neurosci* [Internet]. 2017 Sep 4 [cited 2018 Sep 25];20(10):1418–26. Available from: <http://www.nature.com/doi/10.1038/nn.4632>
  51. Oshimori N, Ohsugi M, Yamamoto T. The Plk1 target Kizuna stabilizes mitotic centrosomes to ensure spindle bipolarity. *Nat Cell Biol* [Internet]. 2006 Oct 17 [cited 2018

- Dec 18];8(10):1095–101. Available from: <http://www.nature.com/articles/ncb1474>
52. Bärenz F, Mayilo D, Gruss OJ. Centriolar satellites: Busy orbits around the centrosome. *Eur J Cell Biol* [Internet]. 2011 Dec [cited 2018 Dec 18];90(12):983–9. Available from: <https://linkinghub.elsevier.com/retrieve/pii/S0171933511001348>
  53. Chung SA, Brown EE, Williams AH, Ramos PS, Berthier CC, Bhangale T, et al. Lupus nephritis susceptibility loci in women with systemic lupus erythematosus. *J Am Soc Nephrol* [Internet]. 2014 Dec 1 [cited 2018 Dec 21];25(12):2859–70. Available from: <http://www.jasn.org/cgi/doi/10.1681/ASN.2013050446>
  54. Marenholz I, Grosche S, Kalb B, Rüschenhoff F, Blümchen K, Schlags R, et al. Genome-wide association study identifies the SERPINB gene cluster as a susceptibility locus for food allergy. *Nat Commun* [Internet]. 2017 Dec 20 [cited 2018 Dec 21];8(1):1056. Available from: <http://www.nature.com/articles/s41467-017-01220-0>
  55. Martino D, Madhusudan N, Zis P, Cavanna A. An introduction to the clinical phenomenology of Tourette syndrome. *Int Rev Neurobiol* [Internet]. 2013 [cited 2019 May 7];112:1–33. Available from: <http://www.ncbi.nlm.nih.gov/pubmed/24295616>
  56. Rudd DS, Axelsen M, Epping EA, Andreasen NC, Wassink TH. A genome-wide CNV analysis of schizophrenia reveals a potential role for a multiple-hit model. *Am J Med Genet Part B Neuropsychiatr Genet* [Internet]. 2014 Dec [cited 2018 Dec 19];165(8):619–26. Available from: <http://doi.wiley.com/10.1002/ajmg.b.32266>
  57. Wang M, Pestov DG. 5'-end surveillance by Xrn2 acts as a shared mechanism for mammalian pre-rRNA maturation and decay. *Nucleic Acids Res* [Internet]. 2011 Mar [cited 2018 Dec 19];39(5):1811–22. Available from: <https://academic.oup.com/nar/article-lookup/doi/10.1093/nar/gkq1050>
  58. Pain O, Pocklington AJ, Holmans PA, Bray NJ, O'Brien HE, Hall LS, et al. Novel Insight into the Aetiology of Autism Spectrum Disorder Gained by Integrating Expression Data with Genome-wide Association Statistics. *bioRxiv* [Internet]. 2018 Nov 29 [cited 2018 Dec 21];480624. Available from: <https://www.biorxiv.org/content/early/2018/11/29/480624>
  59. Willnow TE, Petersen CM, Nykjaer A. VPS10P-domain receptors — regulators of neuronal viability and function. *Nat Rev Neurosci* [Internet]. 2008 Dec 12 [cited 2018 Jun 29];9(12):899–909. Available from: <http://www.nature.com/articles/nrn2516>
  60. Small SA, Petsko GA. Retromer in Alzheimer disease, Parkinson disease and other neurological disorders. *Nat Rev Neurosci* [Internet]. 2015 Mar 11 [cited 2018 Jun 29];16(3):126–32. Available from: <http://www.nature.com/articles/nrn3896>
  61. Small SA, Kent K, Pierce A, Leung C, Kang MS, Okada H, et al. Model-guided microarray implicates the retromer complex in Alzheimer's disease. *Ann Neurol*

- [Internet]. 2005 Dec [cited 2018 Jun 29];58(6):909–19. Available from: <http://doi.wiley.com/10.1002/ana.20667>
62. Hyde CL, Nagle MW, Tian C, Chen X, Paciga SA, Wendland JR, et al. Identification of 15 genetic loci associated with risk of major depression in individuals of European descent. 2016 [cited 2019 Feb 1]; Available from: <https://www.gwern.net/docs/genetics/correlation/2016-hyde.pdf>
  63. Breiderhoff T, Christiansen GB, Pallesen LT, Vaegter C, Nykjaer A, Holm MM, et al. Sortilin-Related Receptor SORCS3 Is a Postsynaptic Modulator of Synaptic Depression and Fear Extinction. Mei L, editor. PLoS One [Internet]. 2013 Sep 19 [cited 2018 Jun 29];8(9):e75006. Available from: <http://dx.plos.org/10.1371/journal.pone.0075006>
  64. Christiansen GB, Andersen KH, Riis S, Nykjaer A, Bolcho U, Jensen MS, et al. The sorting receptor SorCS3 is a stronger regulator of glutamate receptor functions compared to GABAergic mechanisms in the hippocampus. Hippocampus [Internet]. 2017 Mar [cited 2018 Jun 29];27(3):235–48. Available from: <http://doi.wiley.com/10.1002/hipo.22689>
  65. Chakrabarty K, Bhattacharyya S, Christopher R, Khanna S. Glutamatergic Dysfunction in OCD. Neuropsychopharmacology [Internet]. 2005 Sep 20 [cited 2018 Jun 29];30(9):1735–40. Available from: <http://www.nature.com/articles/1300733>
  66. Singer HS, Morris C, Grados M. Glutamatergic modulatory therapy for Tourette syndrome. Med Hypotheses [Internet]. 2010 May [cited 2018 Jun 29];74(5):862–7. Available from: <http://www.ncbi.nlm.nih.gov/pubmed/20022434>
  67. Choudhury PR, Lahiri S, Rajamma U. Glutamate mediated signaling in the pathophysiology of autism spectrum disorders. Pharmacol Biochem Behav [Internet]. 2012 Feb [cited 2018 Jun 29];100(4):841–9. Available from: <http://linkinghub.elsevier.com/retrieve/pii/S009130571100222X>
  68. Maltezos S, Horder J, Coghlan S, Skirrow C, O’Gorman R, Lavender TJ, et al. Glutamate/glutamine and neuronal integrity in adults with ADHD: a proton MRS study. Transl Psychiatry [Internet]. 2014 Mar 18 [cited 2018 Jun 29];4(3):e373. Available from: <http://www.ncbi.nlm.nih.gov/pubmed/24643164>
  69. Calderoni S, Bellani M, Hardan AY, Muratori F, Brambilla P. Basal ganglia and restricted and repetitive behaviours in Autism Spectrum Disorders: current status and future perspectives. Epidemiol Psychiatr Sci [Internet]. 2014 Sep 12 [cited 2018 Dec 18];23(3):235–8. Available from: [http://www.journals.cambridge.org/abstract\\_S2045796014000171](http://www.journals.cambridge.org/abstract_S2045796014000171)
  70. Shaw P, De Rossi P, Watson B, Wharton A, Greenstein D, Raznahan A, et al. Mapping the Development of the Basal Ganglia in Children With Attention-Deficit/Hyperactivity Disorder. J Am Acad Child Adolesc Psychiatry [Internet]. 2014 Jul [cited 2018 Dec

- 18];53(7):780–789.e11. Available from:  
<https://linkinghub.elsevier.com/retrieve/pii/S0890856714003359>
71. Maciel ROH, Ferreira GA, Akemy B, Cardoso F. Executive dysfunction, obsessive–compulsive symptoms, and attention deficit and hyperactivity disorder in Systemic Lupus Erythematosus: Evidence for basal ganglia dysfunction? *J Neurol Sci* [Internet]. 2016 Jan [cited 2018 Dec 18];360:94–7. Available from:  
<https://linkinghub.elsevier.com/retrieve/pii/S0022510X15300605>
  72. Caligiore D, Mannella F, Arbib MA, Baldassarre G. Dysfunctions of the basal ganglia-cerebellar-thalamo-cortical system produce motor tics in Tourette syndrome. Haith AM, editor. *PLOS Comput Biol* [Internet]. 2017 Mar 30 [cited 2018 Dec 18];13(3):e1005395. Available from: <http://dx.plos.org/10.1371/journal.pcbi.1005395>
  73. Van Goozen SHM, Matthys W, Cohen-Kettenis PT, Buitelaar JK, Van England H. Hypothalamic-Pituitary-Adrenal Axis and Autonomic Nervous System Activity in Disruptive Children and Matched Controls. *J Am Acad Child Adolesc Psychiatry* [Internet]. 2000 Nov [cited 2018 Dec 18];39(11):1438–45. Available from:  
<http://linkinghub.elsevier.com/retrieve/pii/S0890856709601945>
  74. Lopez-Duran NL, Kovacs M, George CJ. Hypothalamic–pituitary–adrenal axis dysregulation in depressed children and adolescents: A meta-analysis. *Psychoneuroendocrinology* [Internet]. 2009 Oct [cited 2018 Dec 18];34(9):1272–83. Available from: <http://linkinghub.elsevier.com/retrieve/pii/S0306453009000997>
  75. Hankin BL, Badanes LS, Abela JRZ, Watamura SE. Hypothalamic–Pituitary–Adrenal Axis Dysregulation in Dysphoric Children and Adolescents: Cortisol Reactivity to Psychosocial Stress from Preschool Through Middle Adolescence. *Biol Psychiatry* [Internet]. 2010 Sep [cited 2018 Dec 18];68(5):484–90. Available from:  
<https://linkinghub.elsevier.com/retrieve/pii/S0006322310003483>
  76. Macerollo A, Leckman JF. Neuroendocrine Aspects of Tourette Syndrome. *Int Rev Neurobiol* [Internet]. 2013 Jan 1 [cited 2019 May 8];112:239–79. Available from:  
<https://www.sciencedirect.com/science/article/pii/B9780124115460000093>
  77. Reichl C, Heyer A, Brunner R, Parzer P, Völker JM, Resch F, et al. Hypothalamic-pituitary-adrenal axis, childhood adversity and adolescent nonsuicidal self-injury. *Psychoneuroendocrinology* [Internet]. 2016 Dec [cited 2018 Dec 18];74:203–11. Available from: <https://linkinghub.elsevier.com/retrieve/pii/S0306453016306989>
  78. Tsigos C, Chrousos GP. Hypothalamic–pituitary–adrenal axis, neuroendocrine factors and stress. *J Psychosom Res* [Internet]. 2002 Oct [cited 2018 Dec 18];53(4):865–71. Available from: <http://linkinghub.elsevier.com/retrieve/pii/S0022399902004294>
  79. van West D, Claes S, Deboutte D. Differences in hypothalamic–pituitary–adrenal axis

- functioning among children with ADHD predominantly inattentive and combined types. *Eur Child Adolesc Psychiatry* [Internet]. 2009 Sep 18 [cited 2018 Dec 18];18(9):543–53. Available from: <http://link.springer.com/10.1007/s00787-009-0011-1>
80. Corbett BA, Mendoza SP, Baym CL, Bunge SA, Levine S. Examining cortisol rhythmicity and responsivity to stress in children with Tourette syndrome. *Psychoneuroendocrinology* [Internet]. 2008 Jul 1 [cited 2019 May 8];33(6):810–20. Available from: <https://www.sciencedirect.com/science/article/pii/S0306453008000711>
81. Hill WD, Marioni RE, Maghzian O, Ritchie SJ, Hagenaars SP, McIntosh AM, et al. A combined analysis of genetically correlated traits identifies 187 loci and a role for neurogenesis and myelination in intelligence. *Mol Psychiatry* [Internet]. 2018 Jan 11 [cited 2018 Jun 28];1. Available from: <http://www.nature.com/articles/s41380-017-0001-5>
82. Lam M, Trampush JW, Yu J, Knowles E, Davies G, Liewald DC, et al. Large-Scale Cognitive GWAS Meta-Analysis Reveals Tissue-Specific Neural Expression and Potential Nootropic Drug Targets. *Cell Rep* [Internet]. 2017 Nov 28 [cited 2018 Dec 20];21(9):2597–613. Available from: <http://www.ncbi.nlm.nih.gov/pubmed/29186694>
83. Turley P, Walters RK, Maghzian O, Okbay A, Lee JJ, Fontana MA, et al. Multi-trait analysis of genome-wide association summary statistics using MTAG. *Nat Genet* [Internet]. 2018 Feb 1 [cited 2018 Jun 29];50(2):229–37. Available from: <http://www.nature.com/articles/s41588-017-0009-4>
84. Luciano M, Hagenaars SP, Davies G, Hill WD, Clarke T-K, Shirali M, et al. Association analysis in over 329,000 individuals identifies 116 independent variants influencing neuroticism. *Nat Genet* [Internet]. 2018 Jan [cited 2018 Dec 20];50(1):6–11. Available from: <http://www.ncbi.nlm.nih.gov/pubmed/29255261>
85. Chang D, Nalls MA, Hallgrímsdóttir IB, Hunkapiller J, van der Brug M, Cai F, et al. A meta-analysis of genome-wide association studies identifies 17 new Parkinson’s disease risk loci. *Nat Genet* [Internet]. 2017 Oct 11 [cited 2018 Jun 29];49(10):1511–6. Available from: <http://www.nature.com/doi/10.1038/ng.3955>
86. Dong X, Liao Z, Gritsch D, Hadzhiev Y, Bai Y, Locascio JJ, et al. Enhancers active in dopamine neurons are a primary link between genetic variation and neuropsychiatric disease. *Nat Neurosci* [Internet]. 2018 Oct 17 [cited 2018 Sep 26];21(10):1482–92. Available from: <http://www.nature.com/articles/s41593-018-0223-0>
87. Jun G, Ibrahim-Verbaas CA, Vronskaya M, Lambert J-C, Chung J, Naj AC, et al. A novel Alzheimer disease locus located near the gene encoding tau protein. *Mol Psychiatry* [Internet]. 2016 Jan 17 [cited 2018 Dec 18];21(1):108–17. Available from: <http://www.ncbi.nlm.nih.gov/pubmed/25778476>
88. Mordaunt CE, Park BY, Bakulski KM, Feinberg JI, Croen LA, Ladd-Acosta C, et al. A



- meta-analysis of two high-risk prospective cohort studies reveals autism-specific transcriptional changes to chromatin, autoimmune, and environmental response genes in umbilical cord blood. *bioRxiv* [Internet]. 2018 Dec 5 [cited 2018 Dec 18];486498. Available from: <https://www.biorxiv.org/content/early/2018/12/05/486498.full.pdf+html>
89. O'Brien HE, Hannon E, Hill MJ, Toste CC, Robertson MJ, Morgan JE, et al. Expression quantitative trait loci in the developing human brain and their enrichment in neuropsychiatric disorders. *Genome Biol* [Internet]. 2018 Dec 12 [cited 2018 Dec 18];19(1):194. Available from: <https://genomebiology.biomedcentral.com/articles/10.1186/s13059-018-1567-1>
  90. Ferrari R, Wang Y, Vandrovцова J, Guelfi S, Witeolar A, Karch CM, et al. Genetic architecture of sporadic frontotemporal dementia and overlap with Alzheimer's and Parkinson's diseases. *J Neurol Neurosurg Psychiatry* [Internet]. 2017 Feb [cited 2018 Sep 26];88(2):152–64. Available from: <http://jnnp.bmj.com/lookup/doi/10.1136/jnnp-2016-314411>
  91. Shaw-Smith C, Pittman AM, Willatt L, Martin H, Rickman L, Gribble S, et al. Microdeletion encompassing MAPT at chromosome 17q21.3 is associated with developmental delay and learning disability. *Nat Genet* [Internet]. 2006 Sep 13 [cited 2018 Sep 26];38(9):1032–7. Available from: <http://www.nature.com/articles/ng1858>
  92. Koolen DA, Sharp AJ, Hurst JA, Firth H V, Knight SJL, Goldenberg A, et al. Clinical and molecular delineation of the 17q21.31 microdeletion syndrome. *J Med Genet* [Internet]. 2008 Nov 1 [cited 2018 Sep 26];45(11):710–20. Available from: <http://jmg.bmj.com/cgi/doi/10.1136/jmg.2008.058701>
  93. Koolen DA, Kramer JM, Neveling K, Nillesen WM, Moore-Barton HL, Elmslie F V, et al. Mutations in the chromatin modifier gene KANSL1 cause the 17q21.31 microdeletion syndrome. *Nat Genet* [Internet]. 2012 Jun 29 [cited 2018 Sep 26];44(6):639–41. Available from: <http://www.nature.com/articles/ng.2262>
  94. Li Y, Chen JA, Sears RL, Gao F, Klein ED, Karydas A, et al. An Epigenetic Signature in Peripheral Blood Associated with the Haplotype on 17q21.31, a Risk Factor for Neurodegenerative Tauopathy. Copenhaver GP, editor. *PLoS Genet* [Internet]. 2014 Mar 6 [cited 2018 Sep 26];10(3):e1004211. Available from: <http://dx.plos.org/10.1371/journal.pgen.1004211>