

Electronic supplementary materials

Title:

A space-saving visual screening method, *Glycine max* FAST, for generating transgenic soybean

Authors:

Kosei Iwabuchi (Faculty of Science and Engineering, Konan University)

Takashi L. Shimada (Graduate School of Horticulture, Chiba University)

Tetsuya Yamada (Graduate School of Agriculture, Hokkaido University)

Ikuko Hara-Nishimura (Faculty of Science and Engineering, Konan University)

Journal:

Journal of Plant Research

Corresponding author:

Ikuko Hara-Nishimura

Faculty of Science and Engineering, Konan University, Kobe 658-8501, Japan

E-mail: ihnishi@gr.bot.kyoto-u.ac.jp

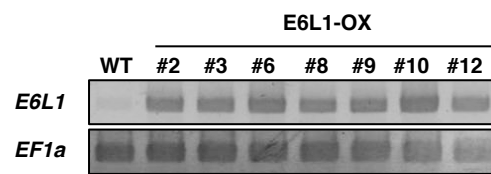


Fig. S1 RT-PCR of *E6L1* and in *EF1a* (control) transcripts in the wild type (WT) and E6L1-OX lines.