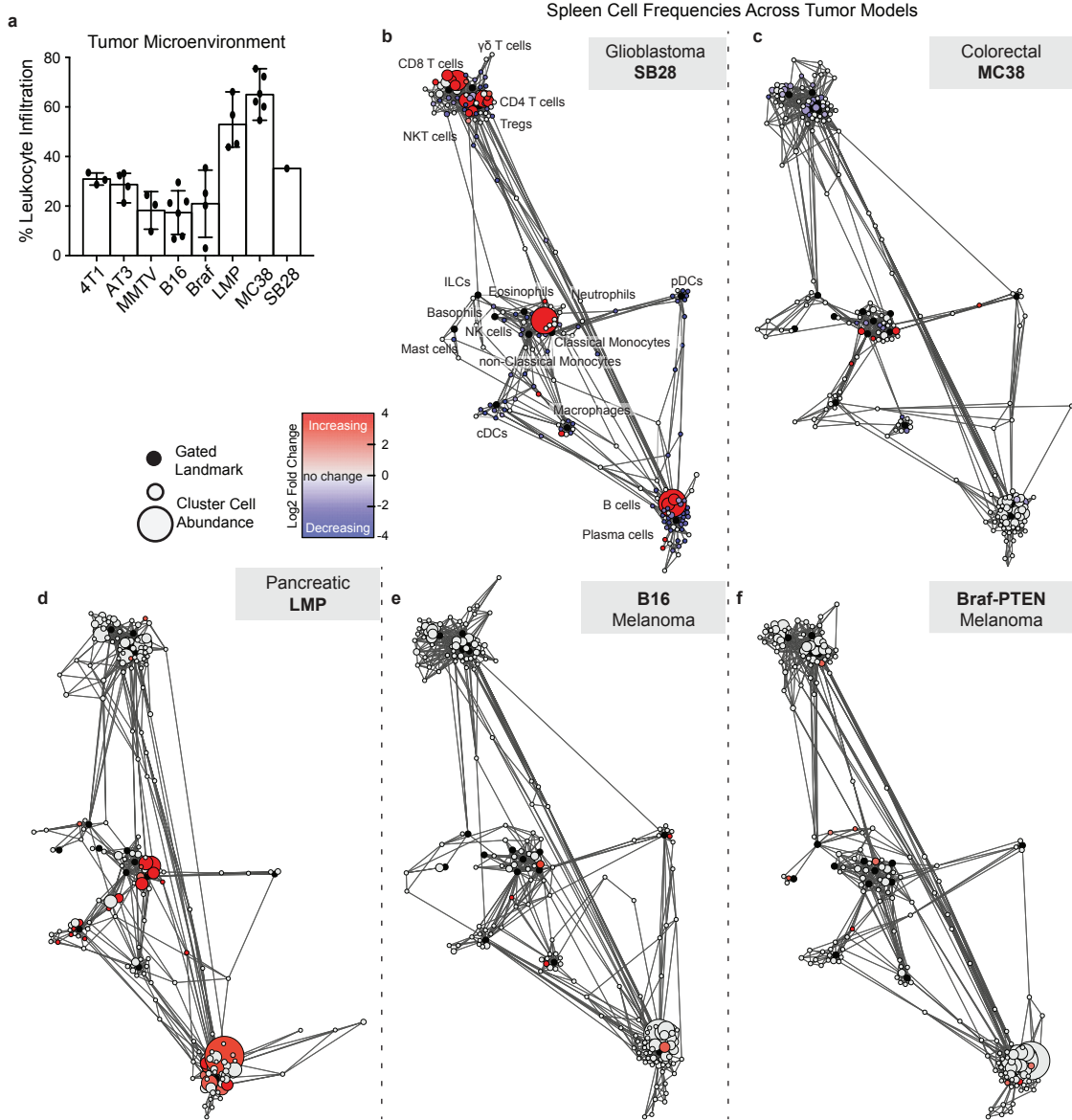
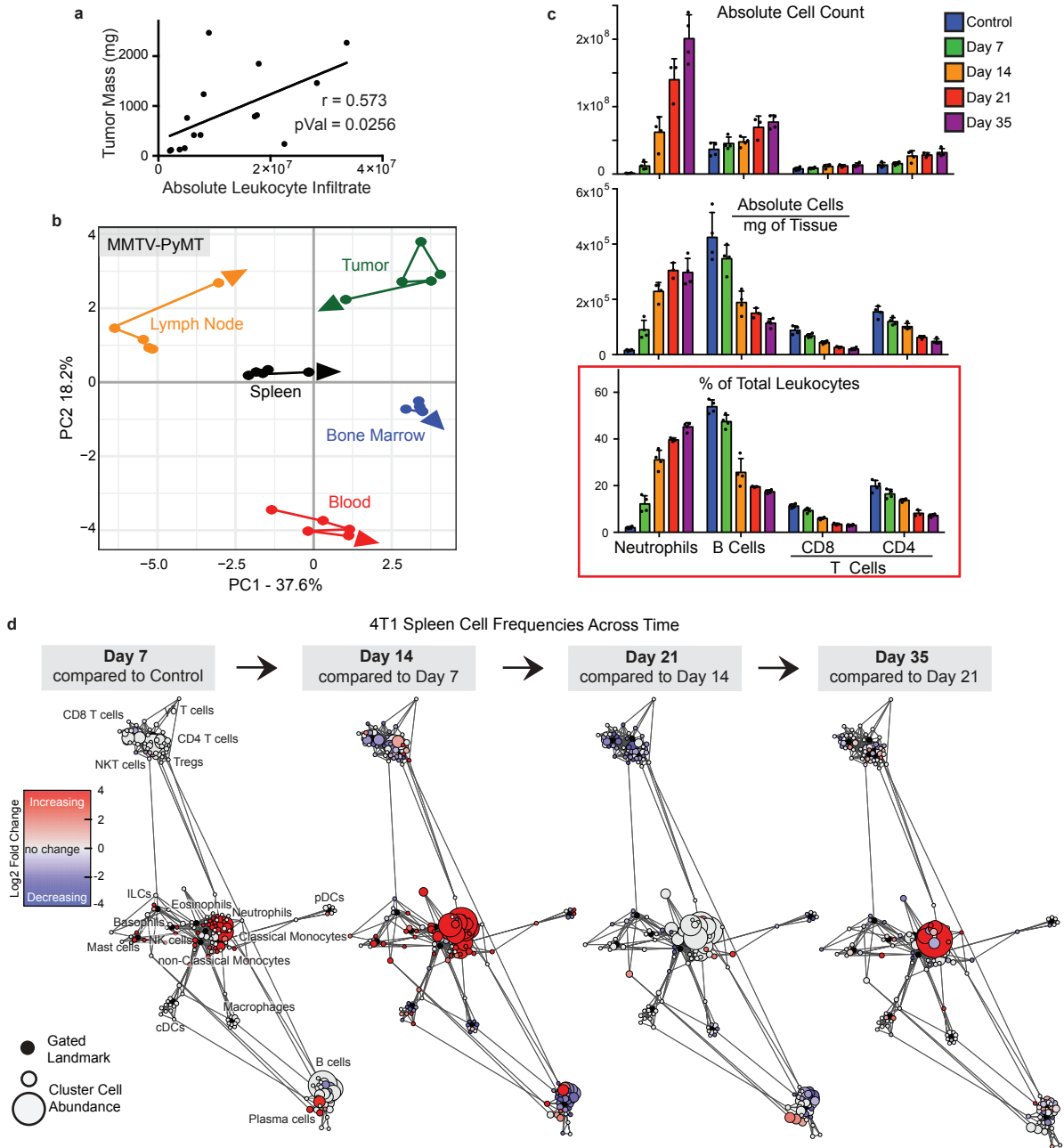


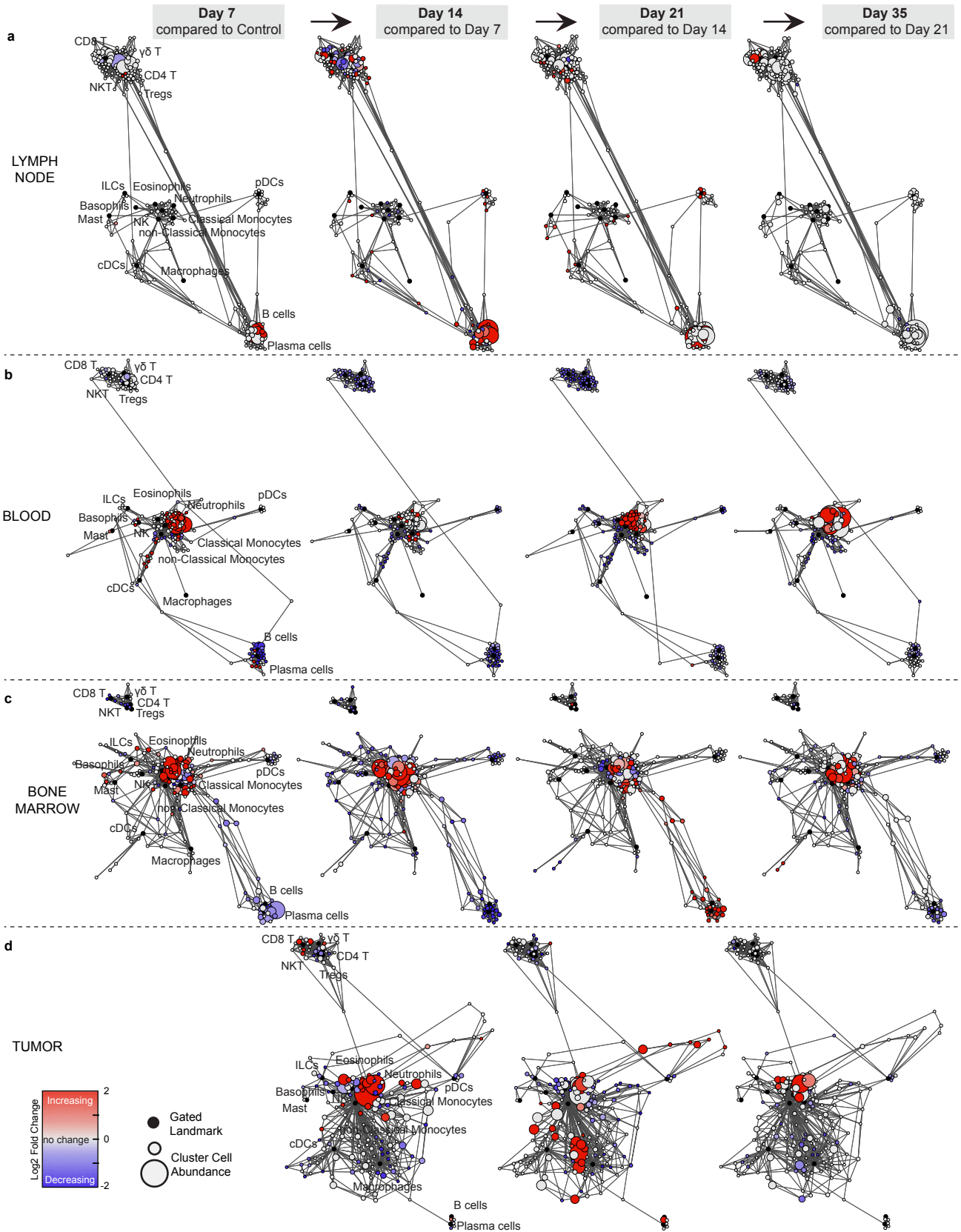
Extended Data Fig. 1: Systemic immunity is distinctly remodeled across tumor types.



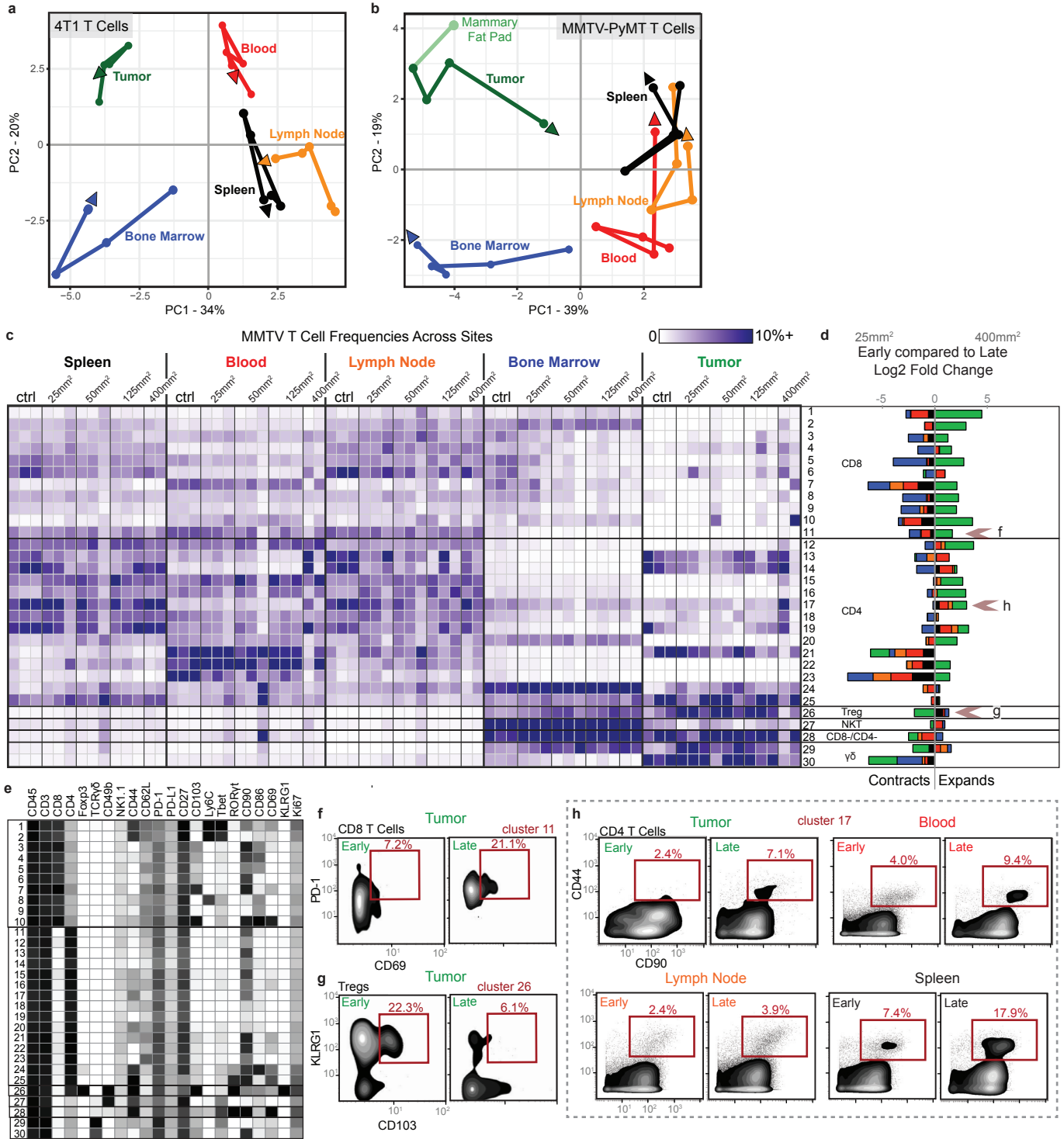
Extended Fig. 2: Systemic immunity is distinctly remodeled over tumor development.



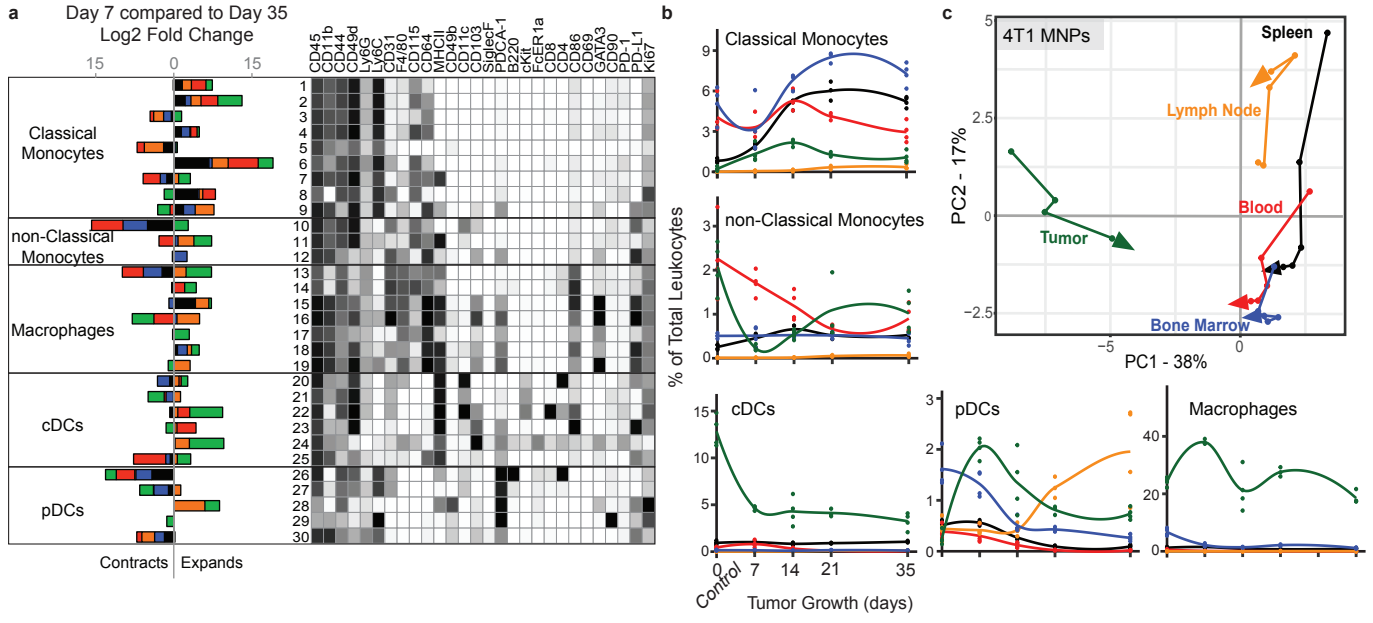
Extended Fig. 3: Immunity is distinctly remodeled by compartment over tumor development.



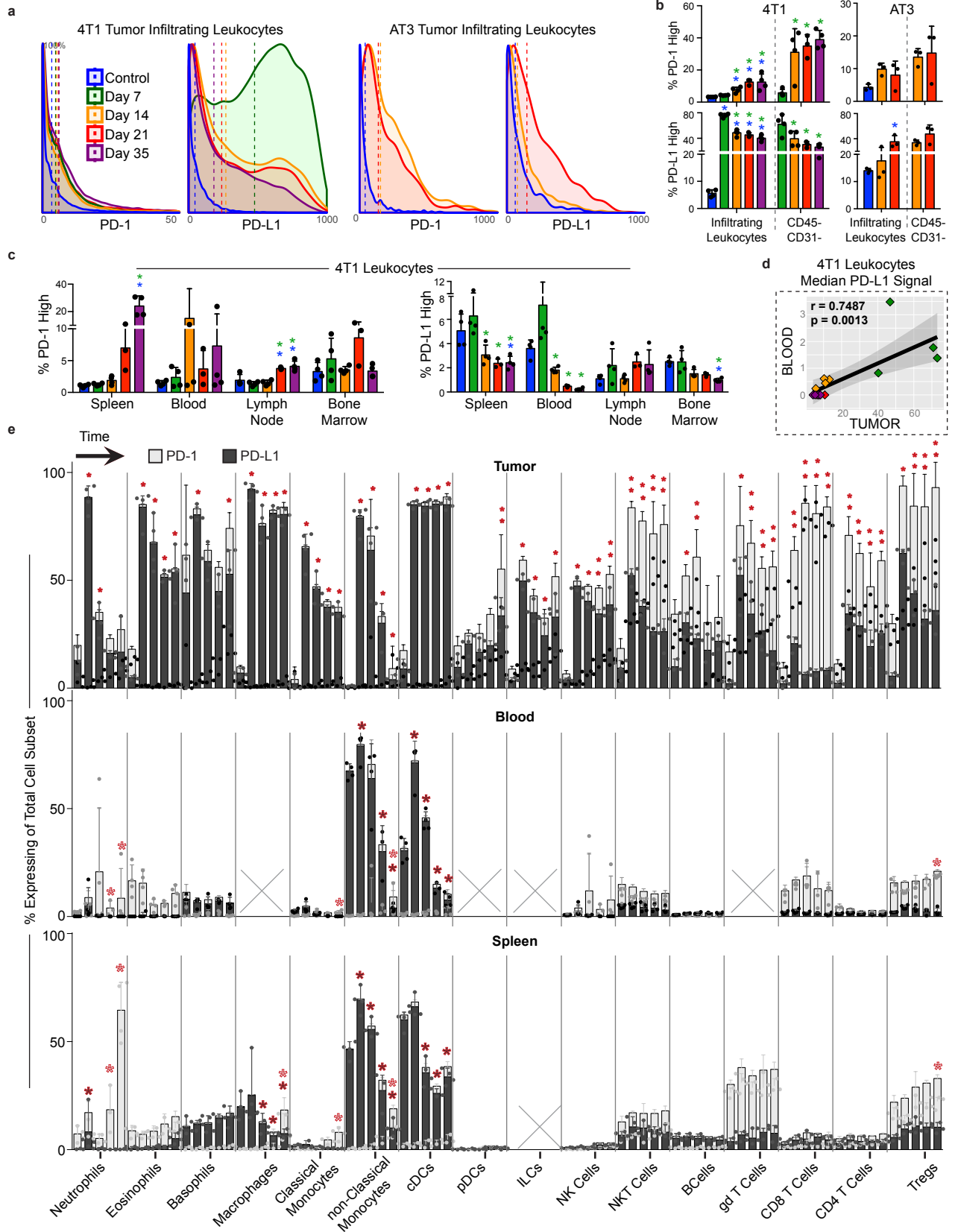
Extended Fig. 4: Tumor growth shifts the systemic T cell composition across models.



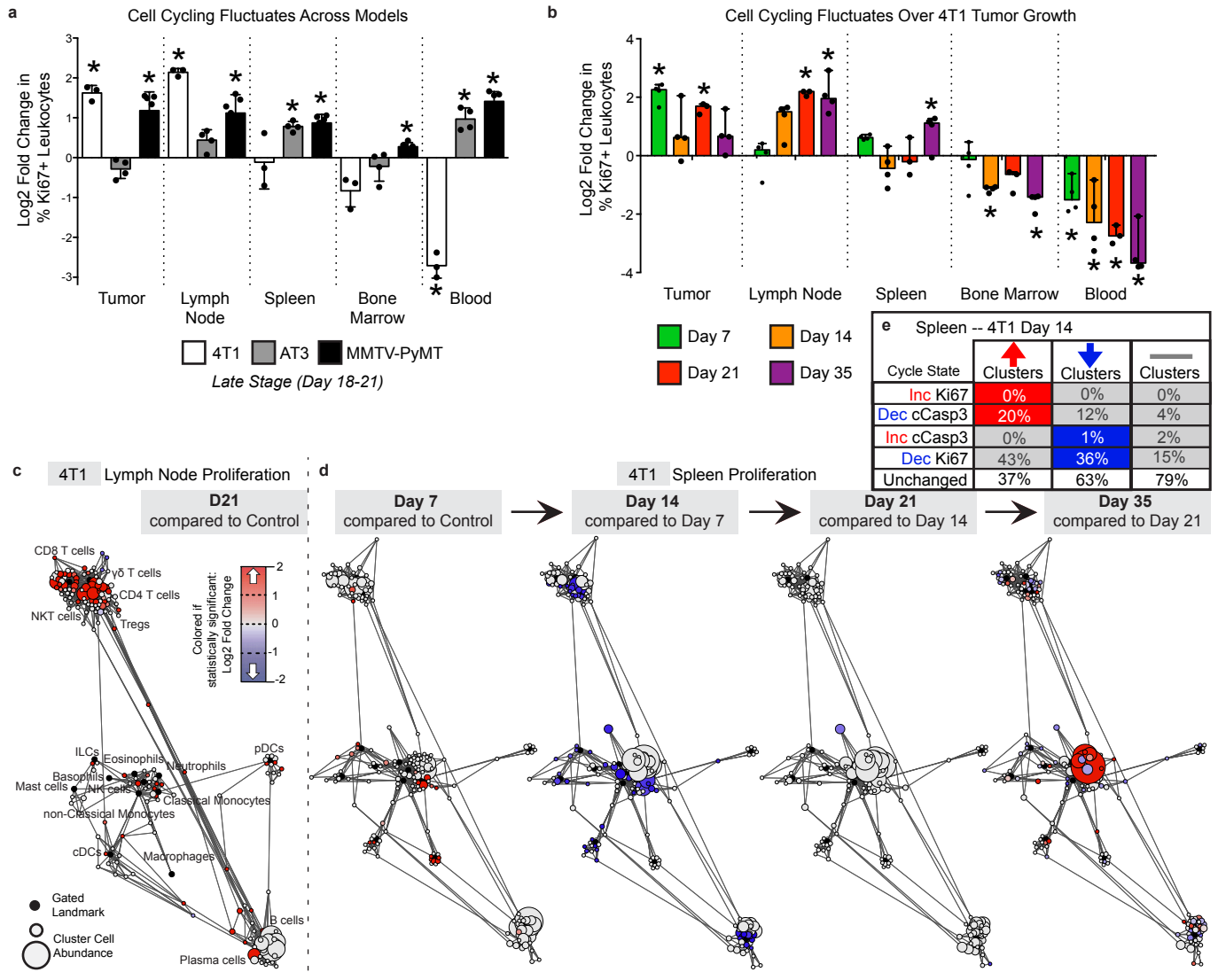
Extended Data Fig. 5: Tumor growth shifts the systemic mononuclear phagocyte composition.



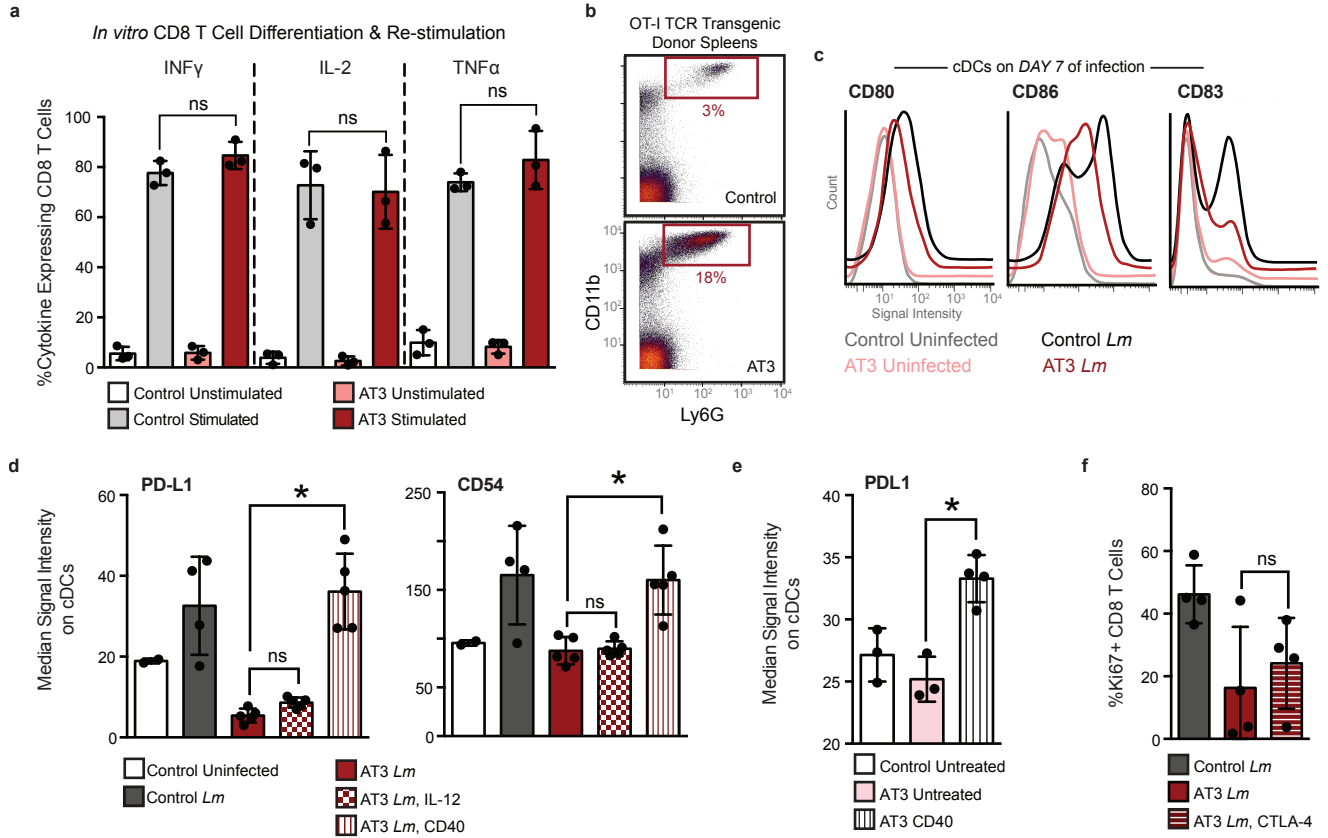
Extended Data Fig. 6: PD-1 and PD-L1 expression is dynamic over tumor growth.



Extended Data Fig. 8: Tumor burden induces organ-specific changes in immune cell cycling.



Extended Fig. 8: Tumor driven deficits in T cell responses are cell-extrinsic.



Extended Data Fig. 9: Tumor resection resets systemic immune organization and function.

