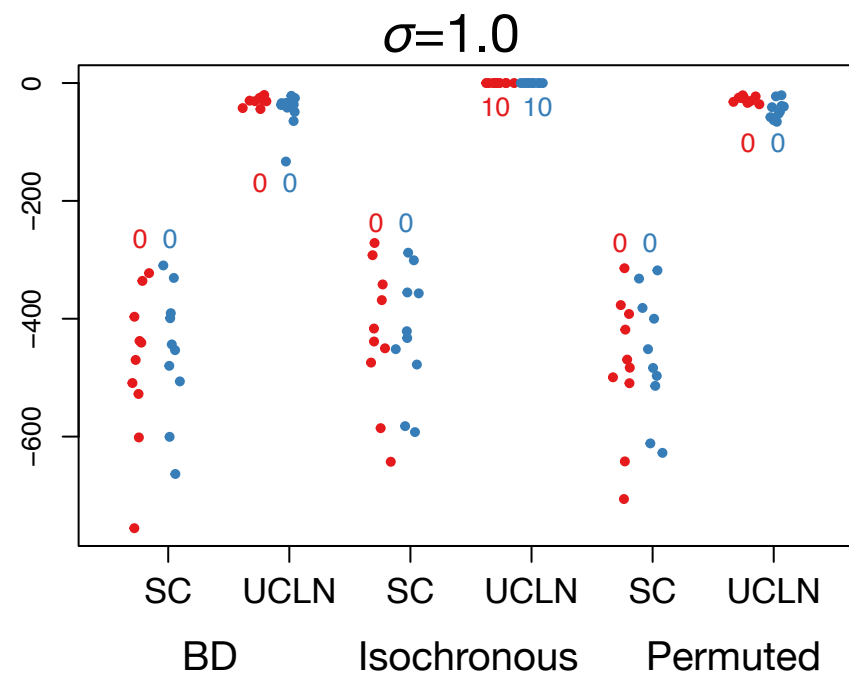
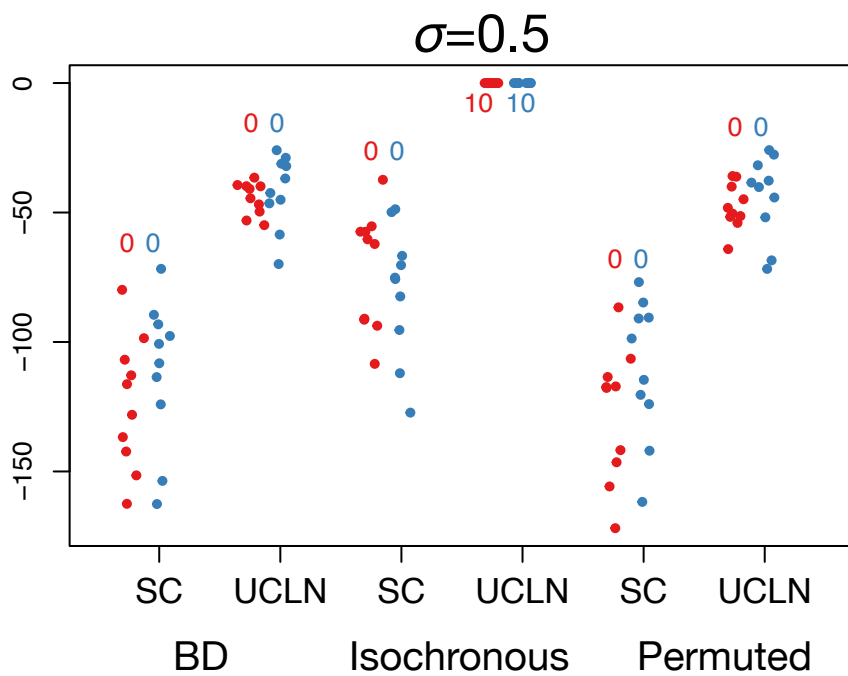
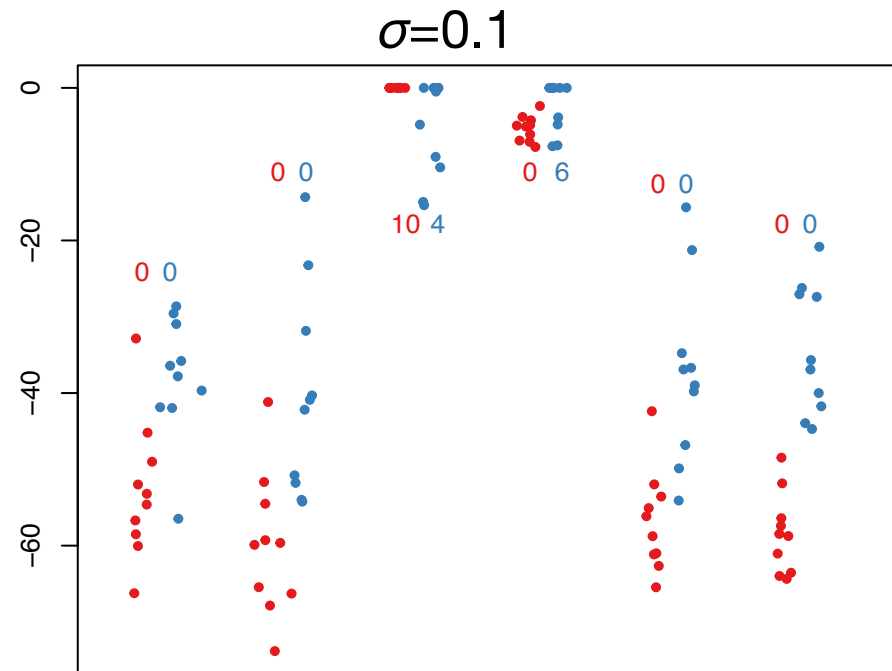
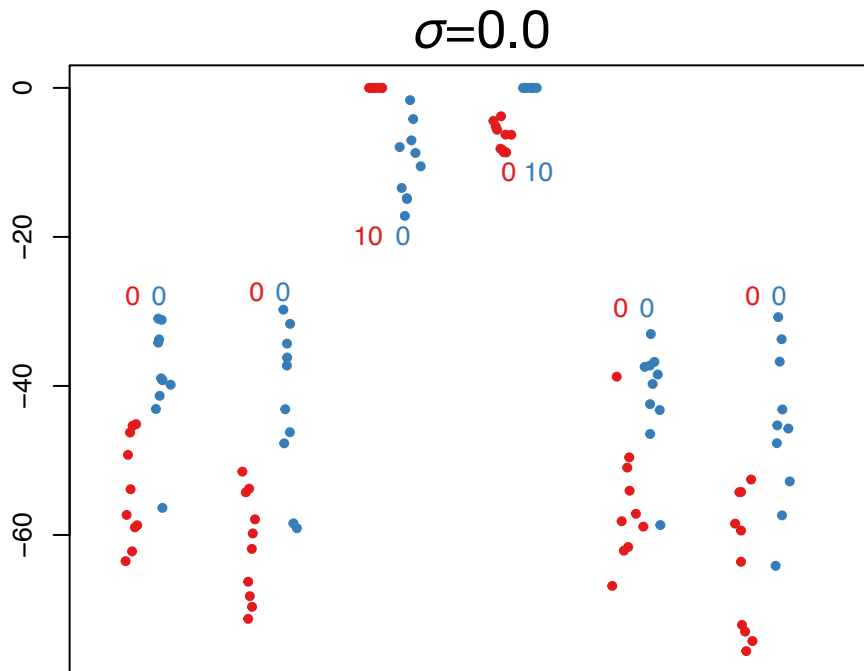
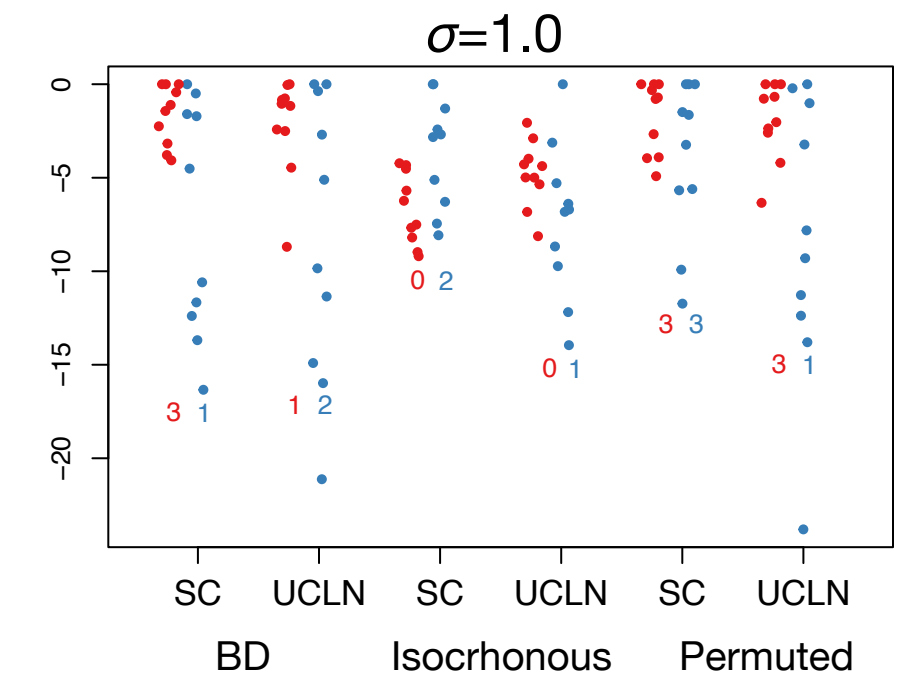
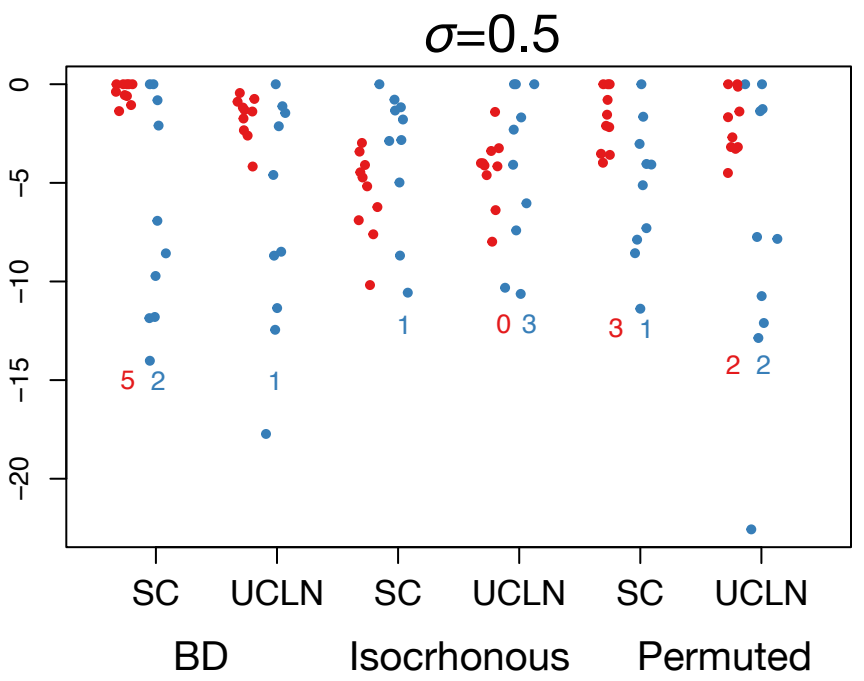
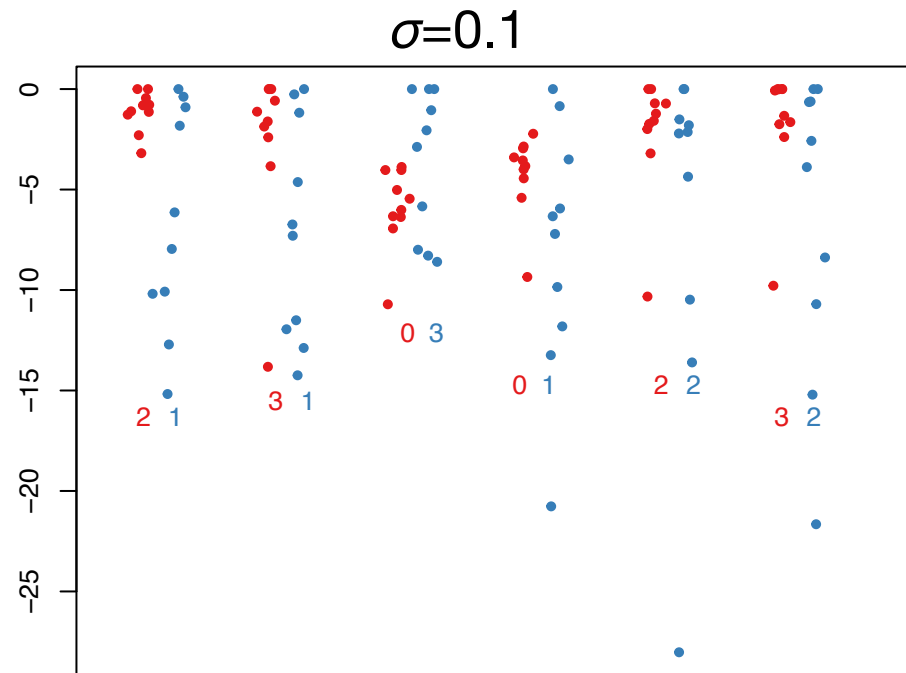
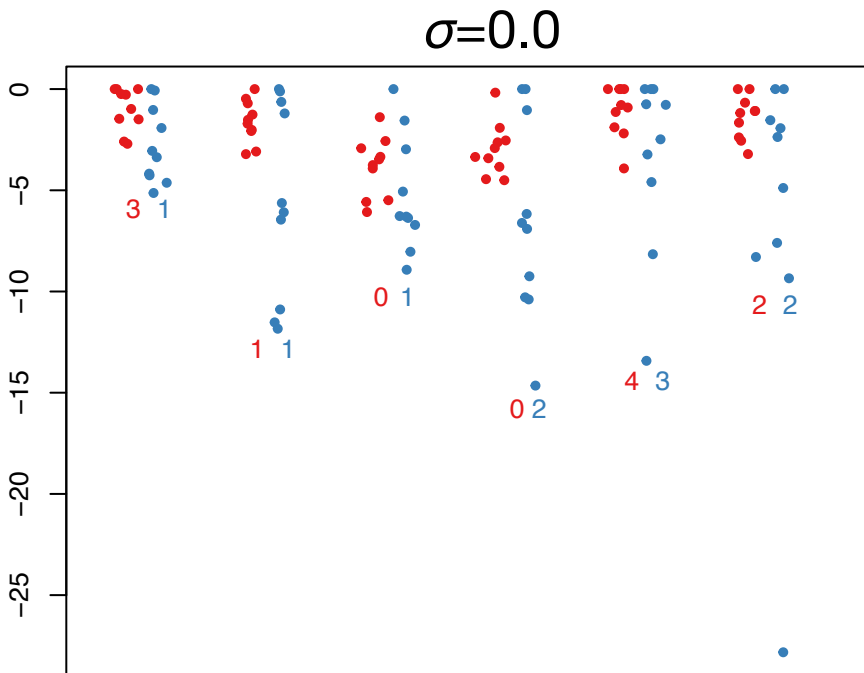


Log Bayes factors relative to best model

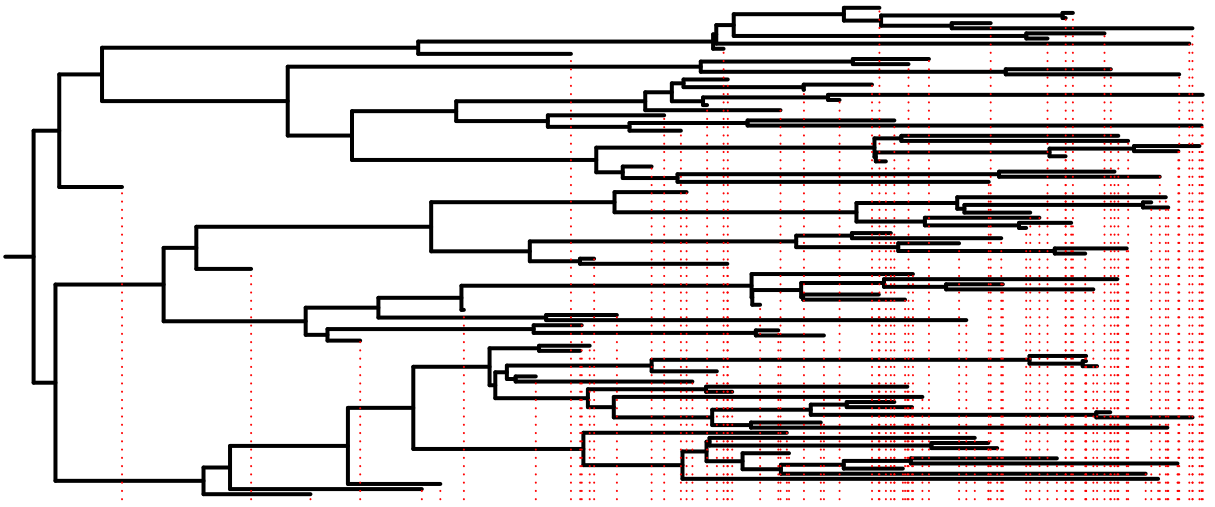


Analysis settings

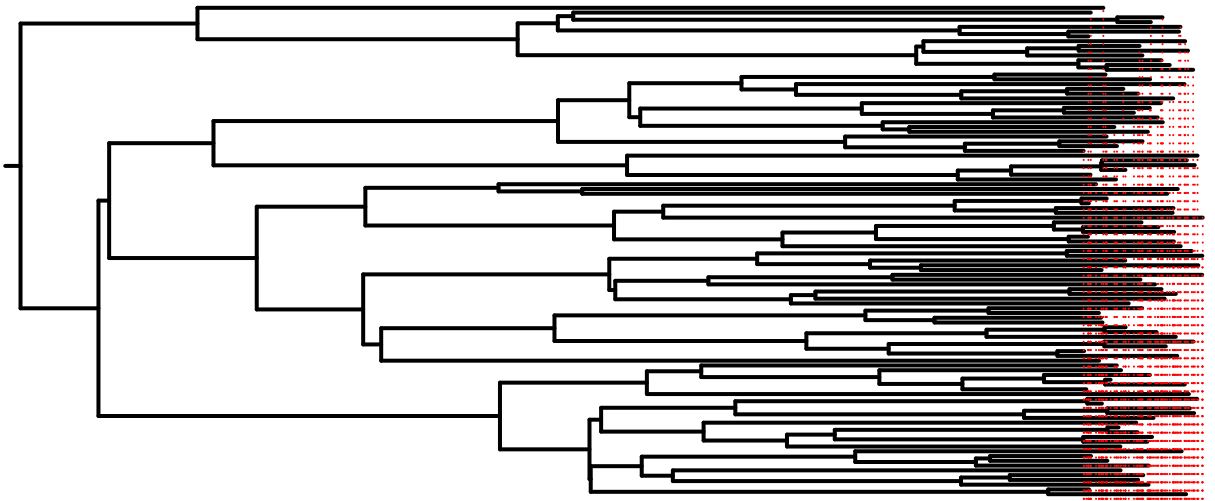
Log Bayes factors relative to best model



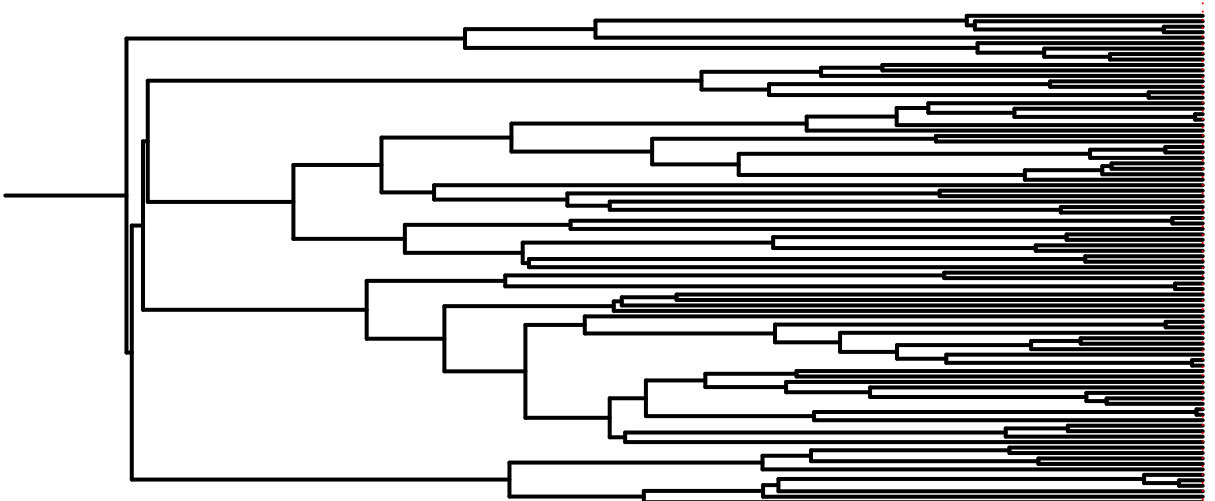
Analysis settings



Birth death tree with constant sampling  
 $\lambda=1.5, \mu=0.5, \psi=0.5, \text{origin}=5$



Birth death tree with variable sampling  
 $\lambda=1.5, \mu_0=1.0, \psi_0=0.0, \mu_1=0.1, \psi_1=0.9, \text{origin}=5, \text{sampling time}=4.5$



Birth death tree with a single sampling time point  
 $\lambda=1.5, \mu=1, \psi=0, \rho=0.5, \text{origin}=5$