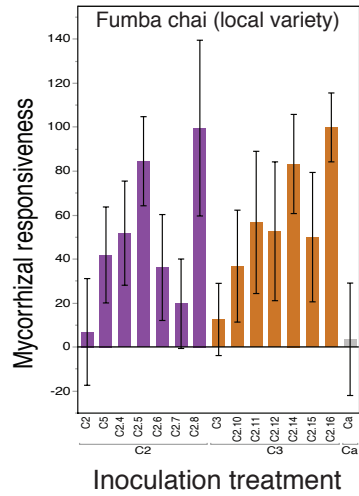
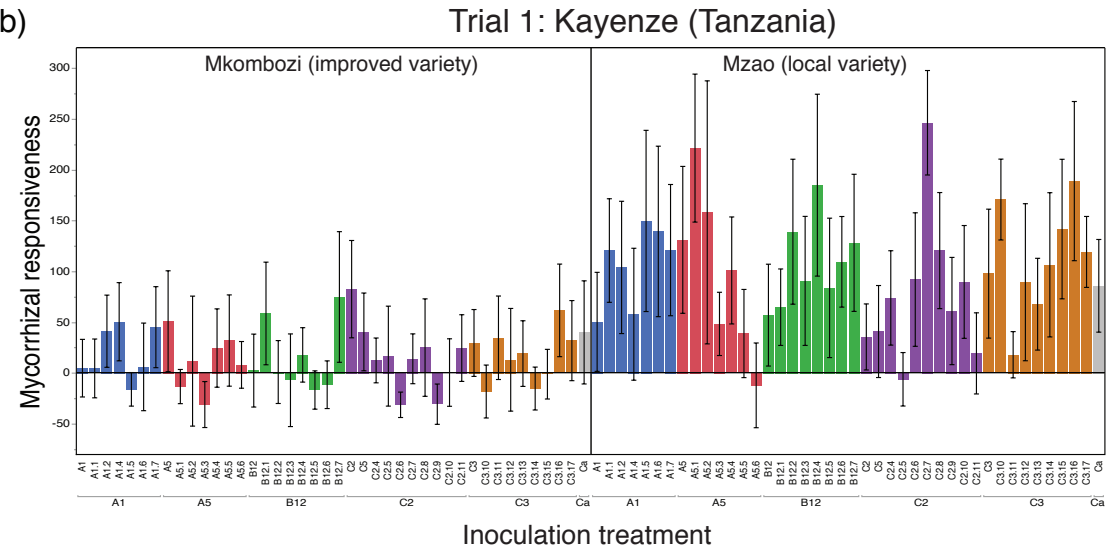


(a) Ukwala-Kawayo (Kenya)

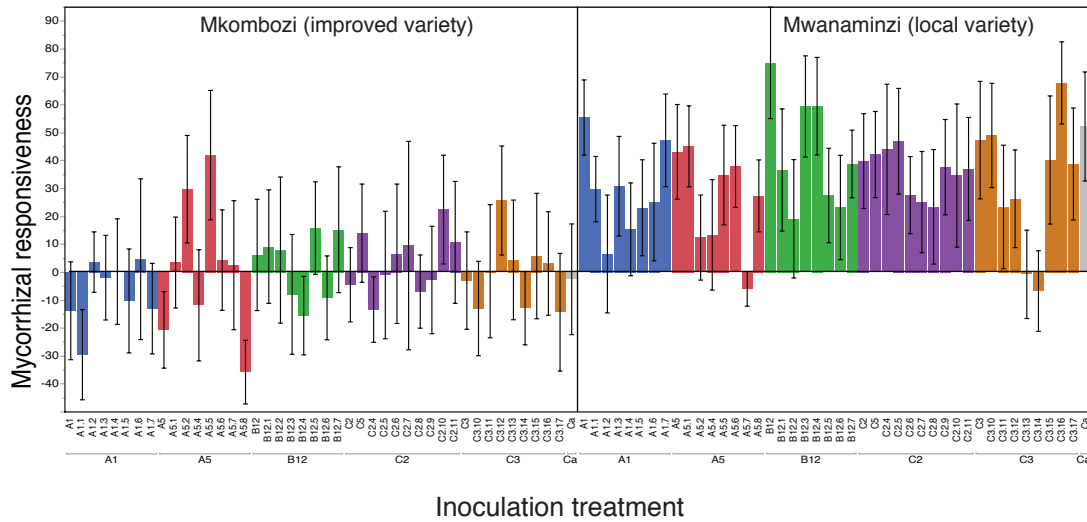


(b)



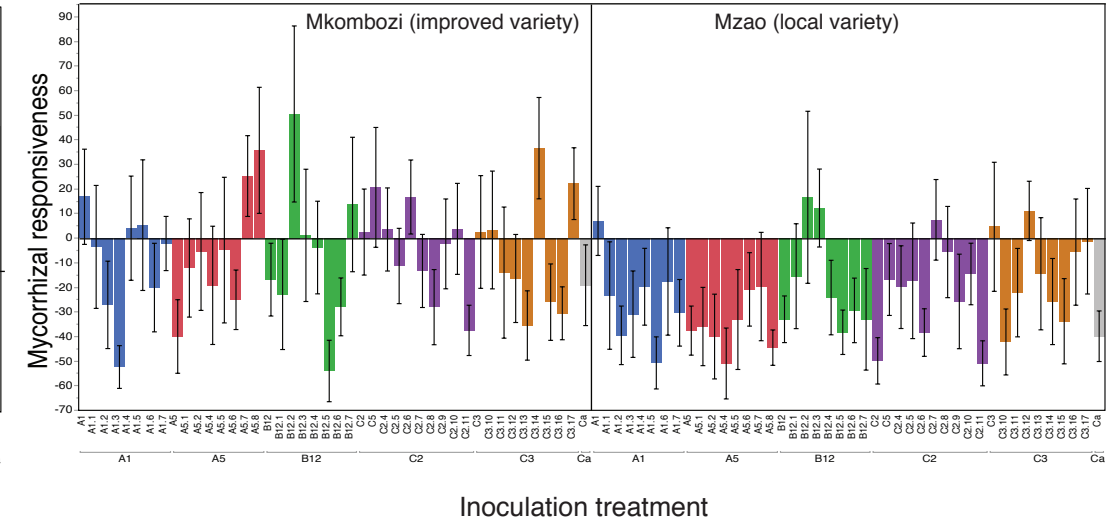
(c)

Kijuka (Tanzania)



(d)

Trial 2: Kayenze (Tanzania)



Supplementary figure 9. Mycorrhizal responsiveness of root weight of local and improved cassava varieties to inoculation with parental *R. irregularis* isolates and their progeny at one location in Kenya and two locations in Tanzania. The same colour bars represent inoculation with a given parental isolate and its progeny. Bars represent ± 1 S.E.