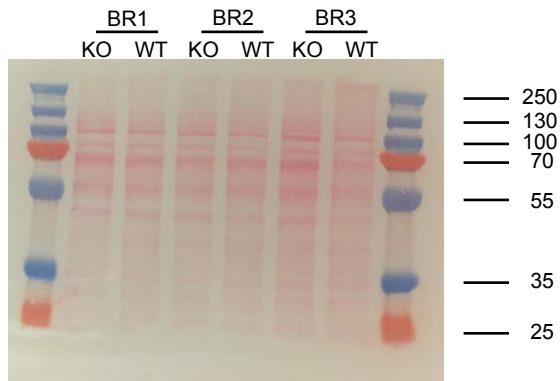
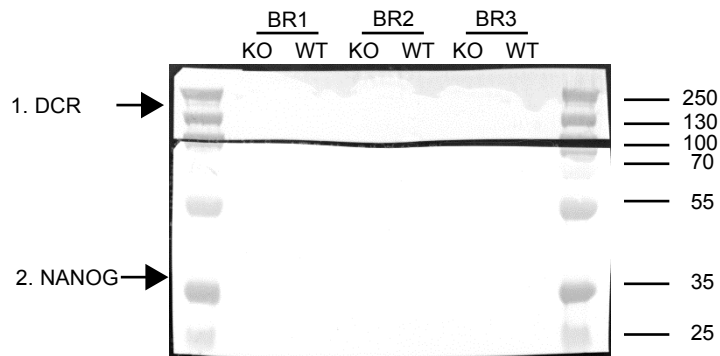


Supplementary File 1- Uncropped blots for NANOG and DICER detection

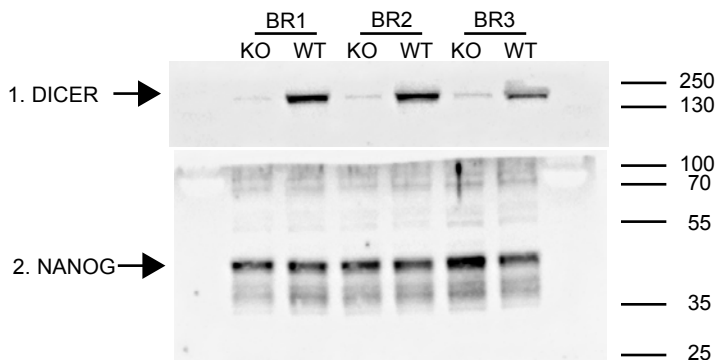
Ponceau Rouge



Membrane was cut at 100 kDa to allow probing of DCR (214 kDa) and NANOG (35 kD)



Uncropped blot



Lower part of the membrane (2. NANOG) was stripped and probed for ACTIN-β (42 kDa)

