

1 **C-Eci: A CUBIC-Eci COMBINED CLEARING METHOD FOR 3D**

2 **FOLLICULAR CONTENT ANALYSIS IN THE FISH OVARY**

3 Manon Lesage\*, Manon Thomas\*, Jérôme Bugeon, Adèle Branthonne, Stéphanie Gay,

4 Emilie Cardona, Julien Bobe, Violette Thermes#

5 INRAE, LPGP, 35000, Rennes, France

6

7 \* Equally contributed to this work

8 # Corresponding author

9

10 **Keywords:** Medaka, trout, ovary, ethyl cinnamate, confocal microscopy, 3D  
11 segmentation.

12

13 **Running title:** Clearing fish ovary for 3D imaging.

14

15 **Summary:**

16 A modified ethyl-cinnamate-based clearing method allows solving fish ovary-  
17 specific challenges for 3D imaging, including high lipid-contents, and analyzing the  
18 ovarian follicular content in medaka and trout.

19

20 **Corresponding author:**

21 [violette.thermes@inra.fr](mailto:violette.thermes@inra.fr)

22 INRAE, Laboratoire de Physiologie et Génomique des poissons, Campus de Beaulieu,

23 35042 Rennes cedex, France

## 1 **ABSTRACT**

2 Deciphering mechanisms of oocyte development in female fishes still remains  
3 challenging and a comprehensive overview of this process at the level of the organ is  
4 still needed. The recent development optical tissue clearing methods have  
5 tremendously boosted the 3D imaging of large size biological samples that are  
6 naturally opaque. However, no attempt of clearing on fish ovary that accumulates  
7 extremely high concentration of lipids within oocytes has been reported to date. To  
8 face with this ovarian-specific challenge, we combined two existing clearing  
9 methods, the non-toxic solvent-based Eci method for efficient clearing and the  
10 CUBIC method to enhance lipid removal and reduce non-specific staining. The  
11 methyl green fluorescent dye was used to stain nuclei and delineate follicles. Using  
12 this procedure (named C-Eci), ovaries of both medaka and trout could be imaged in  
13 3D and all follicles analyzed. To our knowledge this is the first procedure elaborated  
14 for clearing and imaging fish ovary in 3D. The C-Eci methods thus provides an  
15 interesting tool for getting precise quantitative data on follicular content in fish  
16 ovary and promises to be useful for further morphological studies.

17

## 1 INTRODUCTION

2 Although much effort has been made in recent years towards understanding  
3 oogenesis mechanisms at a cellular level in fish, we still lack a comprehensive  
4 overview of the process at the level of the organ. Tightly regulated networks of  
5 hormones, secreted factors and intrinsic signaling pathways underlies the  
6 progression of each single oocyte throughout oogenesis(Lubzens et al.,  
7 2010)(Nakamura et al., 2010). In terms of timing, it however exists different  
8 dynamics of oogenesis in adult females, in relation with the different reproductive  
9 strategies that exist in fish(McBride et al., 2015). So far, studies related to oogenesis  
10 in fish have mainly been based on follicular (*i.e.* oocytes and their surrounding  
11 somatic supporting cells) content analyses from ovarian 2D histological sections,  
12 which require extensive extrapolations of data (Brown-Peterson et al., 2011). Three-  
13 dimensional (3D) analyses of ovarian follicular contents would thus be a major  
14 milestone on the path towards a better comprehension of the oogenesis temporal  
15 dynamics in fish.

16 Techniques for 3D imaging of large biological samples that are naturally opaque  
17 have experienced major technical breakthroughs this past decade, including the  
18 development of numerous optical clearing methods to enhance tissue transparency  
19 and reduce light scattering(Richardson and Lichtman, 2015a). These methods are  
20 either aqueous-based or solvent-based methods and are grouped into four main  
21 classes, including the simple immersion methods, the hyperhydrating methods, the  
22 solvent-based methods and the tissue transformation methods(Richardson and  
23 Lichtman, 2015b; Silvestri et al., 2016). Simple immersion methods rely on the

1 homogenization of refractive indexes of medium and tissues by using high-refractive  
2 index (hRI) aqueous solutions. These solutions are composed of the contrast agent  
3 iohexol (also called Histodenz), such as for the RI Matching Solutions (RIMS), or are  
4 sugar-based methods, such as for SeeDeepBrain (SeeDB)(Yang et al., 2014a)(Ke et al.,  
5 2013)(Affaticati et al., 2017). Methods of the second class are hyperhydrating  
6 solutions, such as the Clear Unobstructed Brain/Body Imaging Cocktails and  
7 Computational analysis (CUBIC) that is based on the use of the hyperhydrating  
8 aminoalcohols, urea and removal of lipids with detergent(Susaki et al., 2014a).  
9 Methods of the third class are tissue transformation methods, such as the  
10 emblematic PAssive CLARITY Technique (PACT) that use an hydrogel to stabilizes  
11 the tissue structure while removing lipids with detergent(Yang et al., 2014b). In the  
12 fourth class, the 3DISCO method (3D Imaging of Solvent-Cleared Organs) allows to  
13 bypass clearing performance limitations of water-based clearing methods, while  
14 preserving fluorescence(Ertürk et al., 2011). More recently, Klingberg *et al.*  
15 developed a new clearing method using the ethyl-3-phenylprop-2-enoate (Eci) that  
16 is considered nontoxic according to the European directive 67/548/EWG and  
17 extremely efficiency for clearing mammalian tissues (Klingberg et al., 2017)(Huang  
18 et al., 2019). Some of these methods were already used for clearing the whole mouse  
19 ovary and allowed successful 3D imaging, however no attempts on fish ovary have  
20 been reported to date(Feng et al., 2017)(Malki et al., 2015a)(Zheng et al.,  
21 2014)(McKey et al., 2020).  
22 We tested several of these clearing methods on the medaka ovary and we finally  
23 established a protocol combining the CUBIC and Eci methods, which allowed us to

1 solve the fish ovarian-specific challenges and optimize 3D fluorescent imaging of the  
2 fish ovary. Using this novel protocol, named C-Eci, ovaries of both medaka and  
3 rainbow trout could be cleared and the follicular content analyzed in 3D.

4

## 5 **RESULTS AND DISCUSSION**

### 6 **The solvent-based method Eci efficiently clears medaka ovary**

7 We first assessed the clearing efficiency on medaka ovary of various hRI simple  
8 immersion solutions, of the hyperhydrating CUBIC method and of solvent-based  
9 methods (Eci and iDISCO+). For hRI simple immersion, samples were treated with  
10 hRI matching solutions adjusted to increasing refractive index, from 1.353 to 1.49.  
11 The apparent transparency in each condition was compared to that of an opaque  
12 non-cleared ovary (Fig. 1). With the different hRI solutions, samples displayed only  
13 a tiny increase of transparency at the maximum RI (1.49). When treated with CUBIC,  
14 transparency was significantly increased. The higher transparency was obtained  
15 with the solvent-based Eci and iDISCO+ methods.

16 The optical penetration in depth of confocal imaging after clearing with either  
17 CUBIC or Eci methods was then compared. Nuclei, including nuclei of the theca and  
18 granulosa cells lining each oocyte, were stained with the Methyl Green (MG) nuclear  
19 dye (Prieto et al., 2014). XZ views of z-stacks revealed a maximal signal recovery in  
20 depth of less than 1 mm with CUBIC, whereas MG fluorescence was recovered up to  
21 2.5 mm with Eci, corresponding to the limit of the objective working distance (Fig.  
22 1J). However, a nonspecific intra-cytoplasmic background was found for Eci-treated

1 samples, whereas no background was detected in CUBIC-treated samples (Fig. 1J,  
2 stars). Similar background was observed in ovaries stained with a less concentrated  
3 MG solution (8 $\mu$ g/ml).

4  
5 These results show that solvent-based methods (iDISCO+ and Eci) enable better  
6 clearing of medaka ovary than aqueous-based methods (RIMS, DSP and CUBIC). In  
7 mouse, previous studies reported clearing of fetal and adult ovaries with the  
8 aqueous-based methods CLARITY(Feng et al., 2017), ScaleA2(Malki et al., 2015b) or  
9 the CUBIC method(Kagami et al., 2018). However, higher clearing efficiency of the  
10 mouse ovary was also obtained recently by using the solvent-based iDISCO+  
11 method(McKey et al., 2020). In addition, the lipid-content is markedly higher in fish  
12 ovary than in mouse ovary, since fish oocytes exhibit higher lipid supply and larger  
13 size due to their telolecithal nature. It is thus even more consistent that solvent-  
14 based clearing methods, employing the highest RI matching solutions, are more  
15 appropriated for clearing fish ovaries than aqueous-based methods. We must  
16 however note that a strong intra-follicular background was observed with the Eci  
17 method.

18

### 19 **Optimization of the Eci method**

20 Based on the assumption that the intra-follicular background was due to remaining  
21 lipids in oocytes after Eci treatment, we tested whether additional lipid removal  
22 may improve the staining specificity. Entire ovaries were thus incubated in the  
23 aqueous reagent 1 of the CUBIC clearing method (CUBIC-1) prior MG staining and

1 Eci clearing (Fig. 2A)(Susaki et al., 2014b). Furthermore, we tested whether  
2 different MG staining conditions may also contribute to reduce the  
3 background(Prieto et al., 2015)(Mohtasham et al., 2010)(Sabatani, 1951). CUBIC-1  
4 pre-incubated ovaries (C-Eci protocol) and not pre-incubated ovaries (Eci native  
5 protocol) were thus processed for MG staining at two different temperatures (4°C  
6 and 50°C) and pH (pH4 and pH7, Fig. 2B). XY-plans at 1000 µm depth from z-stacks  
7 of the different cleared-samples were compared. Follicles of different sizes were  
8 easily distinguishable in each condition, except with Eci at 50°C-pH4 where almost  
9 no fluorescent signal was recovered. Follicles appeared well packed in almost all  
10 conditions, except at 4°C-pH4 where follicles appeared distorted and slightly  
11 dissociated. The fluorescence ratio signal/background was significantly increased  
12 with the C-Eci protocol and the higher ratio was obtained at 50°C-pH7 that offers  
13 the best signal contrast (Fig. 2C). To evaluate the effect of clearing on the ovarian  
14 size, the apparent surface of ovaries was measured on macroscopic images before  
15 and after Eci and C-Eci methods (Fig. 2D). Results show that the apparent ovarian  
16 size was significantly reduced after C-Eci treatment ( $20.51 \pm 4.10 \text{ mm}^2$ ) compared  
17 to non-treated samples ( $26.01 \pm 5.54 \text{ mm}^2$ ). Almost no size modification was  
18 observed with Eci alone. The shrinkage of ovaries treated with C-Eci were therefore  
19 of about 21%.

20

21 These results indicate that combining CUBIC and Eci (C-Eci) significantly reduces  
22 intra-follicular background in medaka ovary by increasing delipidation of follicles,  
23 and that 50°C-pH7 staining conditions significantly improve the MG staining. We

1 cannot exclude that similar results could also be obtained with the widely used  
2 iDISCO+ method, since this later includes a delipidation step with the organic  
3 dichloromethane reagent (DCM)(Liebmann et al., 2016)(Renier et al., 2016).  
4 However, CUBIC-1 and Eci solutions remain very advantageous since they have a  
5 very low toxicity. The C-Eci method is thus an interesting non-toxic alternative to  
6 the iDISCO+ method, which greatly facilitates handling samples though similar  
7 results might likely be obtained with the iDISCO+ method.

8

### 9 **3D imaging of a medaka ovary after C-Eci and 3D analysis of** 10 **follicular content**

11 An ovary collected from an adult medaka female was stained with MG at 50°C-pH7,  
12 cleared with the C-Eci protocol and imaged by confocal microscopy (Fig. 3). The  
13 whole volume was reconstructed (Fig. 3A). All follicles were detectable and no loss  
14 of resolution was observed throughout the sample as shown on XY-planes at  
15 different depth (Fig. 3B, top panels). Ovarian follicles were segmented from the 3D  
16 reconstruction data by using a computational semi-automatic 3D segmentation  
17 procedure (Fig. 3B, bottom panels). The resulting 3D volume reconstruction  
18 displays populations of growing follicles of various sizes (Fig. 3C). As mentioned  
19 above, the C-Eci treatment induces a global shrinkage of the ovary, and assuming  
20 this globally reflects a follicular size reduction, we used the apparent ovarian  
21 surfaces measured before and after C-Eci treatment (*S1* and *S2* respectively, see Fig.  
22 2D) to calculate a correction factor and estimate the real follicle diameter.

23

$$S1 = 26,01 \pm 5,54 \text{ mm}^2$$



1  $S2 = 20,51 \pm 4,10 \text{ mm}^2$

2 The correction factor (*corr*) was calculated as follow:

3 
$$corr = \frac{D1}{D2} = \frac{R1}{R2} = \sqrt{\frac{\pi R_1^2}{\pi R_2^2}} \approx \sqrt{\frac{S1}{S2}} = 1,12$$

4 This correction factor was applied to the 1323 follicle diameters values calculated  
5 from 3D segmentation data, ranging from 50µm to 963µm, and the follicular size  
6 distribution was obtained. Follicles were classified into five categories,  
7 corresponding to follicles at different stages of folliculogenesis, from stage I to stage  
8 IX (Iwamatsu et al., 1988): previtellogenesis (50-150µm, in yellow), pre-yolk  
9 formation (150-400µm, in magenta), early-yolk formation (400-500, in green), late-  
10 yolk formation (500-800µm, in light blue) and maturation (>800µm, in dark blue).  
11 The resulting follicular size distribution displays a predominance of small  
12 previtellogenic (56.16%, in yellow) and pre-yolk formation follicles (31.68%, in  
13 magenta). Finally, 3D views of each category of follicles indicate that the large  
14 maturing follicles (in dark blue) are preferentially located on the ventral side of the  
15 ovary, whereas no evident spatial arrangement could be observed for the other  
16 categories.

17

18 Using the C-Eci method and confocal imaging, we successfully attempted to image a  
19 whole medaka ovary (2685µm thickness) at a cellular resolution and proceeded to  
20 semi-automatic segmentation of follicles. It is worth noting that the C-Eci method  
21 induces shrinkage of the ovary of about 21% (see Fig. 2D), similarly to the iDISCO+  
22 method that is known to introduce a significant shrinkage of sample estimated at

1 11% for the mouse brain(Renier et al., 2016). However, a moderate shrinkage may  
2 not be considered as a drawback since it can allow easier imaging of large samples  
3 such as entire mice(Pan et al., 2016). All the more, we demonstrated that it is  
4 possible to calculate a correction factor that can be applied to determine the real  
5 follicular diameters.

6

### 7 **3D imaging of a trout ovary sample after C-Eci and 3D analysis of** 8 **follicular content**

9 The C-Eci procedure for 3D ovarian imaging was applied to the rainbow trout that  
10 has much larger ovaries and oocytes (up to 4-5 mm) than medaka. Pieces of an  
11 ovary (about 8x6x2mm) collected from an adult female fish were processed through  
12 the C-Eci protocol and MG staining. Opacity was sufficiently reduced to see through  
13 the samples (Fig. 4A). A sample was used for 3D imaging by confocal microscopy  
14 and the whole volume was reconstructed in 3D (Fig. 4B). No major loss of resolution  
15 was observed in XY planes at increasing depths (Fig 4C, left panels). Follicles were  
16 segmented from the 3D reconstruction data using a computational semi-automatic  
17 3D segmentation procedure (Fig. 4C, right panels). Follicles located at the border of  
18 the volume displayed could not be segmented and few others were not detected,  
19 likely due to a discontinuous MG staining (Fig. 4C, arrows). The resulting 3D surface  
20 reconstruction of follicles displays different populations of growing follicles of  
21 various sizes (Fig. 4D). The same correction factor as for the medaka ovary was used  
22 to estimate the real follicular diameters of a total of 499 follicles. The follicular size  
23 distribution, ranging from 50 $\mu$ m to 993 $\mu$ m, was obtained. Follicles were classified

1 into 4 categories, corresponding to follicles at different stages from stage2 to stage  
2 5(Estay et al., 2012)(Campbell et al., 2006)(Bromage and Cumaranatunga, 1988):  
3 early perinucleolar (50-250 $\mu$ m, in yellow), late perinucleolar (250-450 $\mu$ m, in  
4 magenta), cortical alveoli (450-800 $\mu$ m, in light blue) and peripheral yolk granule  
5 (>800 $\mu$ m, in dark blue). The resulting profile displays a large predominance of small  
6 early perinucleolar follicles (78.36%, in yellow). Finally, no evident spatial  
7 arrangement was observed in lamella structures on the 3D view of each category of  
8 follicles.

9

10 Using the C-Eci procedure, we could analyze the follicular size distribution in the  
11 ovary of both medaka and trout, which was till now limited to late vitellogenic and  
12 post-vitellogenic follicles (T, Iwamatsu, 1978). The main limitation of this approach  
13 is the minimal size of follicles that could be measured, the tissue shrinkage not being  
14 considered as a major drawback as discussed above. The 3D segmentation was  
15 indeed restrained to follicles above 50 $\mu$ m in diameter, while 2D segmentation of  
16 smaller oocytes could be managed on medaka ovarian sections(Gay et al., 2018). The  
17 difficulty with the 3D segmentation of image stacks likely comes from a somehow  
18 discontinuous staining contrast in depth. One possibility would be to refine the  
19 segmentation algorithm that should greatly benefit from recent machine learning  
20 approaches. Anyhow, the C-Eci procedure is a non-toxic and efficient technic for 3D  
21 follicular imaging that allows for the first time getting exhaustive and quantitative  
22 data on follicles enclosed at a given time in a fish ovary. We now expect that further  
23 kinetic analyses of the follicular content throughout the reproductive cycle of both

1 medaka and trout will provide true quantitative data on the oogenesis dynamic in  
2 fish ovary. The next step will be to combine the C-Eci protocol with  
3 immunostainings for further developmental and physiological analyses, thus  
4 opening new perspectives for a better understanding of the biology of the fish ovary.

5

## 6 **MATERIALS AND METHODS**

### 7 **Ethical statements**

8 All experimental procedures used in this study followed the recommendations of  
9 the French and European regulation on animal welfare. Fish rearing and handling  
10 were approved by the INRA LPGP-Animal Care and Use Committee (N° Z-2015-30-  
11 VT and Z-2015-127-VT-MF) for medaka, and by the INRA PEIMA Institutional  
12 Animal Care and Use Ethical Committee for rainbow trout (B29-277-02).

13

### 14 **Fish breeding and sample collection**

15 Adult medaka (*Oryzias latipes*) females from the CAB strain were raised in the INRA-  
16 LPGP fish facility at 26°C under an artificial photoperiod (14h light/10h dark),  
17 during which the length of the reproductive cycle is of 24h and eggs are daily spawned  
18 at the onset of the light. Female rainbow trout (*Oncorhynchus mykiss*) from an  
19 autumn-spawning strain were held under natural photoperiod until their first  
20 reproduction (2 years) in INRAE-PEIMA experimental fish facilities (Sizun, France).  
21 For ovary dissections, medaka (aged from 4 to 5 months) and trout (2.5 years old,  
22 134 days after the first spawning) fishes were euthanized by immersion in a lethal

1 dose of MS-222 solution at 30-50mg/L and 400mg.L<sup>-1</sup>, respectively. Ovary of both  
2 medaka and trout were fixed overnight at 4°C by 4% paraformaldehyde (PFA) in  
3 0,01 M phosphate buffer saline pH 7.4 (PBS, Sigma-Aldrich P4417). Ovaries were  
4 washed in PBS and conserved in PBS + 0.5% (w/v) sodium azide (S2002, Sigma-  
5 Aldrich) at 4°C.

6

## 7 **Optical tissue clearing protocols**

### 8 *Simple immersion*

9 All steps were performed at room temperature on an agitator. High-refractive index  
10 (hRI) matching solutions were prepared as described in Yang *et al.* with some  
11 modifications (Yang et al., 2014a). A 60% sorbitol-based solution was prepared by  
12 dissolving 300g of Sorbitol (Sigma-Aldrich S1876) in 400mL of PBS:DMSO (50:50)  
13 (v/v). The RI was adjusted at 1.457 by addition of PBS:DMSO. Dilutions of this  
14 solution (1:6 and 11:15) were prepared to reach lower RI (1.353 and 1.40). To reach  
15 RI 1.49, 120g of sorbitol were dissolved in 50mL of PBS: DMSO. For RI 1.456, 13.32g  
16 of Histodenz (Sigma-Aldrich D2158) was dissolved in 10mL of PBS 0.02M (Sigma-  
17 Aldrich P4417). For each of the solutions described above, the ovary was immersed  
18 successively in 20% (v/v) for 8h ; 40% (v/v) for 16h ; 60% (v/v) for 8h ; 80% (v/v)  
19 for 16h and 100% (v/v) for 48h.

20

### 21 *iDISCO+*

22 iDISCO+ was conducted as described by Renier *et al.* with slight  
23 modifications(Renier et al., 2016). All steps were performed at room temperature

1 on an agitator except with dibenzyl ether. Samples were dehydrated in a 20-40-60-  
2 80-98% (v/v) series of methanol containing 2% Tween20 for 8 to 16h. A final bath  
3 of 100% methanol during 48h was then performed. Ovary was subsequently  
4 transferred to 66% dichloromethane (DCM, Sigma-Aldrich 270997)/33% methanol  
5 for 3h, and 100% dichloromethane twice. Finally the sample was incubated in  
6 dibenzyl ether (DBE, Sigma-Aldrich 108014) for refractive index matching.

7

### 8 *CUBIC*

9 CUBIC protocol was conducted as described by Suzuki *et al.* with slight  
10 modifications(Susaki et al., 2014b). CUBIC-1 reagent is composed by 25% (w/w)  
11 urea (Sigma-Aldrich GE17-1319-01), 25% (w/w) N,N,N',N'-tetrakis(2-  
12 hydroxypropyl)ethylenediamine (Sigma-Aldrich 122262) and 15% tritonX-100  
13 (Sigma-Aldrich X-100) in distilled water. CUBIC2 was prepared by mixing 50%  
14 sucrose (Sigma-Aldrich S9378), 25% (w/w)urea (Sigma-Aldrich GE17-1319-01),  
15 10% triethanolamine (w/w) (Sigma-Aldrich 90279) and 0.1% TritonX-100 (v/v) in  
16 distilled water. Ovary was first incubated in 50%CUBIC-1/50%PBS at room  
17 temperature for 3h and then transferred to 100%CUBIC-1 at 37°C on a rotating  
18 wheel for three days, with a changing of the solution at 24h. Sample was then rinsed  
19 several times in PBS at room temperature and transferred to CUBIC2 for 2 days at  
20 37°C on the rotating wheel.

21

### 22 *Ethyl cinnamate (ECi)*

1 Eci clearing was adapted from Klingberg et al. with few modifications(Klingberg et  
2 al., 2017). All steps were performed at room temperature on an agitator. The sample  
3 was dehydrated in a 20-40-60-80-98% (v/v) series of methanol containing 2%  
4 Tween20 for 8 to 16h. A final bath of 100% methanol during 48h was then  
5 performed and ovary is directly transferred in Eci 100% for a few hours (without  
6 shaking). Eci solution is renewed and sample is placed on agitator.

7

#### 8 *CUBIC-1-Eci (C-Eci)*

9 An ovary was first incubated in 50%CUBIC-1/50%PBS at room temperature for 3h  
10 and then transferred to 100% CUBIC-1 at 37°C on a rotating wheel for three days,  
11 with a changing of the solution at 24h. Samples were rinsed several times in PBS at  
12 room temperature and then processed according to the Eci protocol.

13

#### 14 **Nuclear staining with Methyl Green**

15 Nuclear staining was performed before clearing steps and after CUBIC-1 in the C-Eci  
16 protocol. With these later, the nuclear staining was performed before the serial  
17 dehydration steps. Samples were incubated in MG in PBS/0.1% triton (pH7) or in  
18 TNT (TrisHCl 0.1M, NaCl 0.15M)/0.1% triton (pH4). MG was used at 80µg/ml or  
19 8µg/ml. Incubations were performed at 4°C or 50°C for 2,5 days. Samples were then  
20 washed overnight in PBS + 0.1% tween at room temperature.

21

#### 22 **Image acquisition**

1 Bright-field macroscopic images were acquired with an upright Zeiss  
2 stereomicroscope with an Axiocam digital camera. For fluorescent imaging, a Leica  
3 TCS SP8 laser scanning confocal microscope was used. Samples were imaged with  
4 the 16x/0.6 IMM CORR VISIR HC FLUOTAR (Leica) objective. The MG fluorescent  
5 signal was detected through laser excitation at 638 nm and fluorescent detection  
6 was performed by an internal photomultiplier. Z-steps were fixed at 6  $\mu\text{m}$  for all  
7 acquisitions. For clearing method comparisons, samples were imaged with the same  
8 settings, including no laser compensation in depth and no image post-processing.  
9 For 3D whole sample imaging, images were acquired with laser compensation and  
10 contrast enhancement was applied. For medaka ovary and because of its large size  
11 (>2,5 mm), the dorsal and ventral parts were imaged separately. For each face, a  
12 total volume of about 7.5 x 7.5 x 2 mm was acquired (voxel size: 1.8 x 1.8 x 6  $\mu\text{m}$ )  
13 and generated 5GB of data. The overlap was of 1 mm. All samples were imaged  
14 within the following week after staining and clearing.

15

### 16 **3D image reconstruction and segmentation**

17 Whole specimens imaged by confocal microscopy were treated with the Amira  
18 2019.2 software (Thermo Fisher Scientific) on a 64-bit Windows 10 Pro computer  
19 equipped with a 2x Intel Xeon Silver 4110 (8 Core, 3.0GHz) processor, a Nvidia  
20 Geforce GTX 1080 graphic card and 384 Go of RAM. To minimize the data volume,  
21 raw data initial size (spatial resolution 1,8 x 1,8 x 6  $\mu\text{m}$ ) were scaled to 0.3 (1:3) in x  
22 and y. 3D segmentation of follicles was performed semi-automatically in the project  
23 editor of Amira using a combination of different operation with systematic 3D



1 interpretation. To binarize the nuclear signal, the image gradient (canny deriche)  
2 was calculated and a Top-Hat was applied on resulting images to threshold nuclei.  
3 Images were inverted to visualize the internal part of follicles and connective  
4 tissues. Morphological operator like opening and hole fill was performed to improve  
5 follicles shapes. A watershed was applied to separate connected object. To eliminate  
6 non-follicles remaining structures, binary objects were filtered based on their size  
7 and shape. Only follicles with a spherical shape and a size above  $50\mu\text{m}^3$  were kept.  
8 Resulting 3D reconstruction of follicles was generated with Amira's "Volume  
9 rendering" visualization module. Volume of all segmented follicles were exported,  
10 equivalent diameters were calculated and corrected with a correction factor to  
11 compensate the volume shrinkage due to sample clearing. Follicles were then  
12 colored by diameter range, based on their corrected size.

13

## 14 **Statistics**

15 Statistical analyses were performed by using Rstudio Version 1.1.463. P-values were  
16 calculated by using a non-parametric Wilcoxon signed-rank test for indicating  
17 significant differences between samples.

18

## 19 **ACKNOWLEDGMENTS**

20 We thank the INRA-LPGP fish facility staff, and especially Cecile Duret, for fish  
21 rearing and husbandry.

22

## 1 **COMPETING INTERESTS**

2 No competing interest declared.

3

## 4 **FUNDING**

5 This work was supported by the TEFOR project (Agence National de la Recherche,  
6 ANR-II-INBS-0014 to VT) and the DYNAMO project (Agence National de la  
7 Recherche, ANR-18-CE20-0004 to VT).

8

## 9 **AUTHOR CONTRIBUTIONS**

10 ML performed image processing, data analyses and participates in manuscript  
11 writing. MT performed samples clarification, samples imaging, led the set up of the  
12 C-Eci protocol and participates to the manuscript writing. JBu performed the semi-  
13 automatic 3D segmentation workflow. AB participated to the set up of the  
14 clarification protocol. SG and EC collected samples. JB participated in the design of  
15 the study. VT conceived the study, participated in data analyses and manuscript  
16 writing. All authors read and approved the final manuscript.

17

18

## 1 REFERENCES

- 2 **Affaticati, P., Simion, M., De Job, E., Rivière, L., Hermel, J.-M., Machado, E., Joly,**  
3 **J.-S. and Jenett, A.** (2017). zPACT: Tissue Clearing and Immunohistochemistry on  
4 Juvenile Zebrafish Brain. *BIO-Protoc.* **7**,  
5 **Bromage, N. and Cumarantunga, R.** (1988). Egg Production in the Rainbow Trout. In  
6 *Recent Advances in Aquaculture* (ed. Muir, J. F.) and Roberts, R. J.), pp. 63–138.  
7 Dordrecht: Springer Netherlands.  
8 **Brown-Peterson, N. J., Wyanski, D. M., Saborido-Rey, F., Macewicz, B. J. and**  
9 **Lowerre-Barbieri, S. K.** (2011). A Standardized Terminology for Describing  
10 Reproductive Development in Fishes. *Mar. Coast. Fish.* **3**, 52–70.  
11 **Campbell, B., Dickey, J., Beckman, B., Young, G., Pierce, A., Fukada, H. and**  
12 **Swanson, P.** (2006). Previtellogenic Oocyte Growth in Salmon: Relationships among  
13 Body Growth, Plasma Insulin-Like Growth Factor-1, Estradiol-17beta, Follicle-  
14 Stimulating Hormone and Expression of Ovarian Genes for Insulin-Like Growth Factors,  
15 Steroidogenic-Acute Regulatory Protein and Receptors for Gonadotropins, Growth  
16 Hormone, and Somatolactin1. *Biol. Reprod.* **75**, 34–44.  
17 **Ertürk, A., Mauch, C. P., Hellal, F., Förstner, F., Keck, T., Becker, K., Jährling, N.,**  
18 **Steffens, H., Richter, M., Hübener, M., et al.** (2011). Three-dimensional imaging of the  
19 unsectioned adult spinal cord to assess axon regeneration and glial responses after injury.  
20 *Nat. Med.* **18**, 166–171.  
21 **Estay, F., Colihueque, N. and Araneda, C.** (2012). Comparison of Oogenesis and Sex  
22 Steroid Profiles between Twice and Once Annually Spawning of Rainbow Trout Females  
23 (*Oncorhynchus mykiss*). *Sci. World J.* **2012**, 1–7.  
24 **Feng, Y., Cui, P., Lu, X., Hsueh, B., Billig, F. M., Yanez, L. Z., Tomer, R.,**  
25 **Boerboom, D., Carmeliet, P., Deisseroth, K., et al.** (2017). CLARITY reveals  
26 dynamics of ovarian follicular architecture and vasculature in three-dimensions. *Sci. Rep.*  
27 **7**, srep44810.  
28 **Gay, S., Bugeon, J., Bouchareb, A., Henry, L., Delahaye, C., Legeai, F., Montfort, J.,**  
29 **Le Cam, A., Siegel, A., Bobe, J., et al.** (2018). MiR-202 controls female fecundity by  
30 regulating medaka oogenesis. *PLOS Genet.* **14**, e1007593.  
31 **Huang, J., Brenna, C., Khan, A. ul M., Daniele, C., Rudolf, R., Heuveline, V. and**  
32 **Gretz, N.** (2019). A cationic near infrared fluorescent agent and ethyl-cinnamate tissue  
33 clearing protocol for vascular staining and imaging. *Sci. Rep.* **9**, 521.  
34 **Iwamatsu, T., Ohta, T., Oshima, E. and Sakai, N.** (1988). Oogenesis in the Medaka  
35 *Oryzias latipes* : Stages of Oocyte Development : Developmental Biology. *Zoolog. Sci.* **5**,  
36 353–373.  
37 **Kagami, K., Shinmyo, Y., Ono, M., Kawasaki, H. and Fujiwara, H.** (2018). Three-  
38 dimensional evaluation of murine ovarian follicles using a modified CUBIC tissue  
39 clearing method. *Reprod. Biol. Endocrinol.* **16**, 72.  
40 **Ke, M.-T., Fujimoto, S. and Imai, T.** (2013). SeeDB: a simple and morphology-  
41 preserving optical clearing agent for neuronal circuit reconstruction. *Nat. Neurosci.* **16**,  
42 1154–1161.  
43 **Klingberg, A., Hasenberg, A., Ludwig-Portugall, I., Medyukhina, A., Männ, L.,**  
44 **Brenzel, A., Engel, D. R., Figge, M. T., Kurts, C. and Gunzer, M.** (2017). Fully  
45 Automated Evaluation of Total Glomerular Number and Capillary Tuft Size in Nephritic

- 1 Kidneys Using Lightsheet Microscopy. *J. Am. Soc. Nephrol. JASN* **28**, 452–459.
- 2 **Liebmann, T., Renier, N., Bettayeb, K., Greengard, P., Tessier-Lavigne, M. and**  
3 **Flajolet, M.** (2016). Three-Dimensional Study of Alzheimer’s Disease Hallmarks Using  
4 the iDISCO Clearing Method. *Cell Rep.*
- 5 **Lubzens, E., Young, G., Bohe, J. and Cerdà, J.** (2010). Oogenesis in teleosts: How fish  
6 eggs are formed. *Gen. Comp. Endocrinol.* **165**, 367–389.
- 7 **Malki, S., Tharp, M. E. and Bortvin, A.** (2015a). A Whole-Mount Approach for  
8 Accurate Quantitative and Spatial Assessment of Fetal Oocyte Dynamics in Mice. *Biol.*  
9 *Reprod.* **93**.
- 10 **Malki, S., Tharp, M. E. and Bortvin, A.** (2015b). A Whole-Mount Approach for  
11 Accurate Quantitative and Spatial Assessment of Fetal Oocyte Dynamics in Mice. *Biol.*  
12 *Reprod.* **93**.
- 13 **McBride, R. S., Somarakis, S., Fitzhugh, G. R., Albert, A., Yaragina, N. A.,**  
14 **Wuenschel, M. J., Alonso-Fernández, A. and Basilone, G.** (2015). Energy acquisition  
15 and allocation to egg production in relation to fish reproductive strategies. *Fish Fish.* **16**,  
16 23–57.
- 17 **McKey, J., Cameron, L. A., Lewis, D., Batchvarov, I. S. and Capel, B.** (2020).  
18 Combined iDISCO and CUBIC tissue clearing and lightsheet microscopy for in toto  
19 analysis of the adult mouse ovary†. *Biol. Reprod.* ioaa012.
- 20 **Mohtasham, N., Mahdavi-Shahri, N., Salehinejad, J., Ejtehadi, H., Torabi-Parizi,**  
21 **M. and Ghazi, N.** (2010). Detection of nucleoproteins in squamous cell carcinoma, and  
22 dysplastic and normal mucosa in the oral cavity by methyl green-pyronin staining. *J. Oral*  
23 *Sci.* **52**, 239–243.
- 24 **Nakamura, S., Kobayashi, K., Nishimura, T., Higashijima, S. and Tanaka, M.**  
25 (2010). Identification of Germline Stem Cells in the Ovary of the Teleost Medaka.  
26 *Science* **328**, 1561–1563.
- 27 **Pan, C., Cai, R., Quacquarelli, F. P., Ghasemigharagoz, A., Loubopoulos, A.,**  
28 **Matryba, P., Plesnila, N., Dichgans, M., Hellal, F. and Ertürk, A.** (2016). Shrinkage-  
29 mediated imaging of entire organs and organisms using uDISCO. *Nat. Methods* **13**, 859–  
30 867.
- 31 **Prieto, D., Aparicio, G., Morande, P. E. and Zolessi, F. R.** (2014). A fast, low cost,  
32 and highly efficient fluorescent DNA labeling method using methyl green. *Histochem.*  
33 *Cell Biol.* **142**, 335–345.
- 34 **Prieto, D., Aparicio, G., Machado, M. and Zolessi, F. R.** (2015). Application of the  
35 DNA-Specific Stain Methyl Green in the Fluorescent Labeling of Embryos. *J. Vis. Exp.*  
36 52769.
- 37 **Renier, N., Adams, E. L., Kirst, C., Wu, Z., Azevedo, R., Kohl, J., Autry, A. E.,**  
38 **Kadiri, L., Umadevi Venkataraju, K., Zhou, Y., et al.** (2016). Mapping of Brain  
39 Activity by Automated Volume Analysis of Immediate Early Genes. *Cell* **165**, 1789–  
40 1802.
- 41 **Richardson, D. S. and Lichtman, J. W.** (2015a). Clarifying Tissue Clearing. *Cell* **162**,  
42 246–257.
- 43 **Richardson, D. S. and Lichtman, J. W.** (2015b). Clarifying Tissue Clearing. *Cell* **162**,  
44 246–257.
- 45 **Sabatani, A.** (1951). Differential Staining of Nucleic Acids. I. Methyl green-Pyronin.  
46 *Cytologia (Tokyo)* **16**, 315–324.

- 1 **Silvestri, L., Costantini, I., Sacconi, L. and Pavone, F. S.** (2016). Clearing of fixed  
2 tissue: a review from a microscopist's perspective. *J. Biomed. Opt.* **21**, 081205–081205.
- 3 **Susaki, E. A., Tainaka, K., Perrin, D., Kishino, F., Tawara, T., Watanabe, T. M.,**  
4 **Yokoyama, C., Onoe, H., Eguchi, M., Yamaguchi, S., et al.** (2014a). Whole-Brain  
5 Imaging with Single-Cell Resolution Using Chemical Cocktails and Computational  
6 Analysis. *Cell* **157**, 726–739.
- 7 **Susaki, E. A., Tainaka, K., Perrin, D., Kishino, F., Tawara, T., Watanabe, T. M.,**  
8 **Yokoyama, C., Onoe, H., Eguchi, M., Yamaguchi, S., et al.** (2014b). Whole-Brain  
9 Imaging with Single-Cell Resolution Using Chemical Cocktails and Computational  
10 Analysis. *Cell* **157**, 726–739.
- 11 **T, Iwamatsu** (1978). Studies on Oocyte Maturation of the Medaka, *Oryzias latipes* VI.  
12 RELATIONSHIP BETWEEN THE CIRCADIAN CYCLE OF OOCYTE  
13 MATURATION AND ACTIVITY OF THE PITUITARY GLAND. *J. Exp. Zool.* **206**,  
14 355–63.
- 15 **Yang, B., Treweek, J. B., Kulkarni, R. P., Deverman, B. E., Chen, C.-K., Lubeck, E.,**  
16 **Shah, S., Cai, L. and Gradinaru, V.** (2014a). Single-Cell Phenotyping within  
17 Transparent Intact Tissue through Whole-Body Clearing. *Cell* **158**, 945–958.
- 18 **Yang, B., Treweek, J. B., Kulkarni, R. P., Deverman, B. E., Chen, C.-K., Lubeck, E.,**  
19 **Shah, S., Cai, L. and Gradinaru, V.** (2014b). Single-Cell Phenotyping within  
20 Transparent Intact Tissue through Whole-Body Clearing. *Cell* **158**, 945–958.
- 21 **Zheng, W., Zhang, H., Gorre, N., Risal, S., Shen, Y. and Liu, K.** (2014). Two classes  
22 of ovarian primordial follicles exhibit distinct developmental dynamics and physiological  
23 functions. *Hum. Mol. Genet.* **23**, 920–928.
- 24
- 25

## 1 **FIGURE LEGENDS**

### 2 **Figure 1: Assessment of the transparency of adult medaka ovaries treated** 3 **with different clearing methods**

4 Ovaries dissected from adult medaka were cleared with hRI immersion solutions,  
5 CUBIC, Eci or iDISCO+ methods. **(A)** Non-cleared ovary in PBS. **(B-F)** Ovaries cleared  
6 with hRI immersion solutions with increasing refractive index. **(G-I)** Ovaries cleared  
7 with the indicated methods, CUBIC, Eci or iDISCO+. Transparency was assessed by  
8 the visualization of black squares. Dotted black line indicates the edge of ovaries  
9 after clearing. The solvent-based clearing methods Eci and iDISCO+ are the most  
10 efficient methods for clearing medaka ovary. **(J)** Comparison of the fluorescent  
11 recovery in depth after CUBIC and Eci methods. The maximal signal recovery in  
12 depth was obtained with the Eci method although an important intra-follicular  
13 background was observed. Square = 1mm x 1mm.

14

### 15 **Figure 2: Combining CUBIC and Eci methods efficiently improve nuclear** 16 **staining of whole medaka ovary**

17 **(A)** Whole-ovary clearing protocol timeline. Medaka ovaries were cleared following  
18 the Eci procedure with or without a pretreatment with the aqueous reagent 1 of the  
19 CUBIC method (CUBIC-1). Nuclei were stained with methyl green (MG) using  
20 different conditions of pH and temperature. **(B)** MG fluorescent signal (in green)  
21 acquired from XY planes at 1000  $\mu\text{m}$  depth with the same settings from ovaries  
22 treated with Eci or C-Eci. Tissue integrity and intra-cytoplasmic background are  
23 improved when samples are treated with C-Eci and when incubated at 50°C for MG

1 staining. **(C)** Quantification of the ratio signal/background of the MG staining. All  
2 data are mean  $\pm$  SD of 20 ROI measured on one ovarian section. **(D)** The apparent  
3 ovarian surface areas were measured from brightfield images (black dotted lines)  
4 before and after clearing with Eci (n=7) and C-Eci (n=12). The tissue shrinkage is  
5 significant with the C-Eci method (Wilcoxon test, p=0.002516). Data are presented  
6 as means  $\pm$  SD. Square = 1 x1 mm; scale bar: 250 $\mu$ m.

7

### 8 **Figure 3: A 3D follicular content analysis in adult medaka ovary**

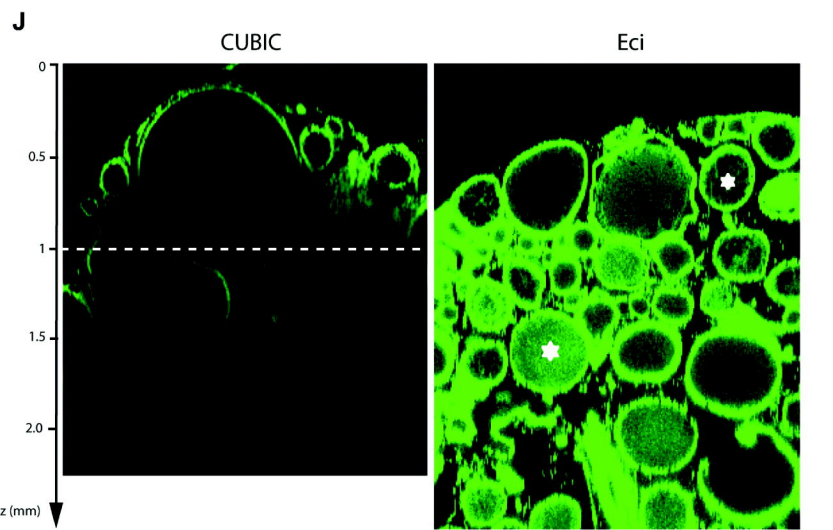
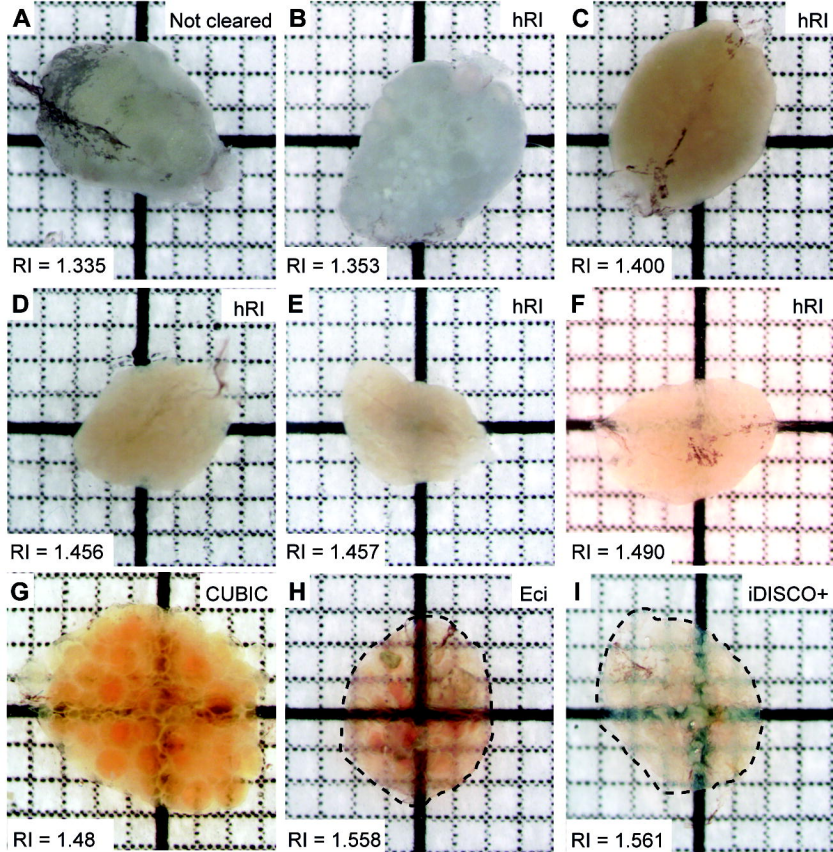
9 **(A)** 3D reconstruction of a whole medaka ovary after C-Eci clearing, Methyl Green  
10 (MG) staining and confocal imaging. **(B)** XY planes at increasing depths (top panels)  
11 and the same XY planes merged with follicular 3D segmentation data (bottom  
12 panels). Only few follicles are not detected (arrows). **(C)** Ventral and dorsal views of  
13 the 3D reconstruction of the whole ovary merged with 3D segmented follicles.  
14 Follicles were classified into five classes according to their diameter and the  
15 corresponding developmental stage (from stage I to IX). Transversal clipping planes  
16 for each of the five classes are shown. White dotted lines delineate the border of the  
17 ovary. The large maturing follicles (in dark blue) are preferentially located at the  
18 ventral side of the ovary. The follicular size distribution displays the abundance of  
19 the small previtellogenic (in yellow) and pre-yolk formation (in magenta) follicles.  
20 Frequencies are expressed as a percentage of the total number of follicles. A,  
21 anterior; P, posterior. Scale bar: 1 mm.

22

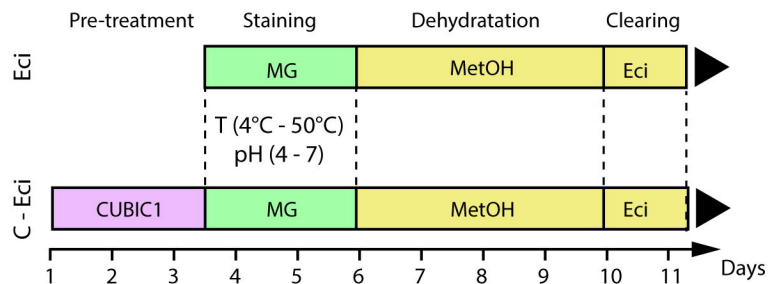
### 23 **Figure 4: A 3D follicular content analysis in adult trout ovary**

1 **(A)** A piece of trout ovary (2 mm thick) before and after clearing with C-Eci and  
2 Methyl Green (MG) staining, showing that C-Eci method efficiently clears trout  
3 ovary. **(B)** 3D reconstruction of a piece of trout ovary after C-Eci clearing, MG  
4 staining and confocal imaging. **(C)** XY planes at increasing depths (left panels) and  
5 the same XY planes merged with follicular 3D segmentation data (right panels). Few  
6 follicles are not detected (arrows). **(D)** Top and bottom views of the 3D  
7 reconstruction whole sample merged with 3D segmented follicles. Follicles were  
8 classified into four classes according to their diameter and the corresponding  
9 developmental stages (from early perinucleolar stage to peripheral yolk granule  
10 stage). 3D reconstructions for each of the four classes are shown. No evident spatial  
11 arrangement of the different class of follicles is observed in lamella structures. The  
12 follicular size distribution displays a large predominance of small early  
13 perinucleolar follicles (in yellow). Frequencies are expressed as a percentage of the  
14 total number of follicles segmented. Square = 1x1 mm; Scale bar: 1 mm.

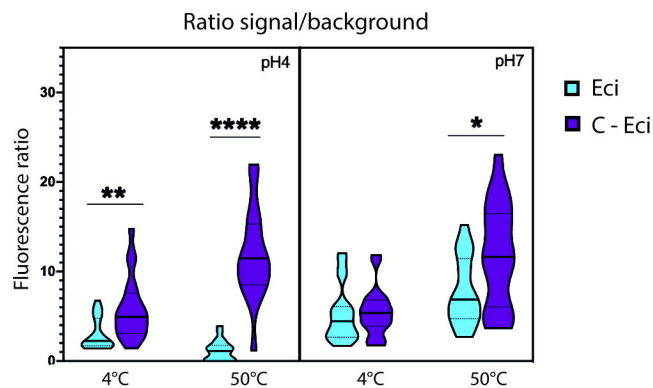




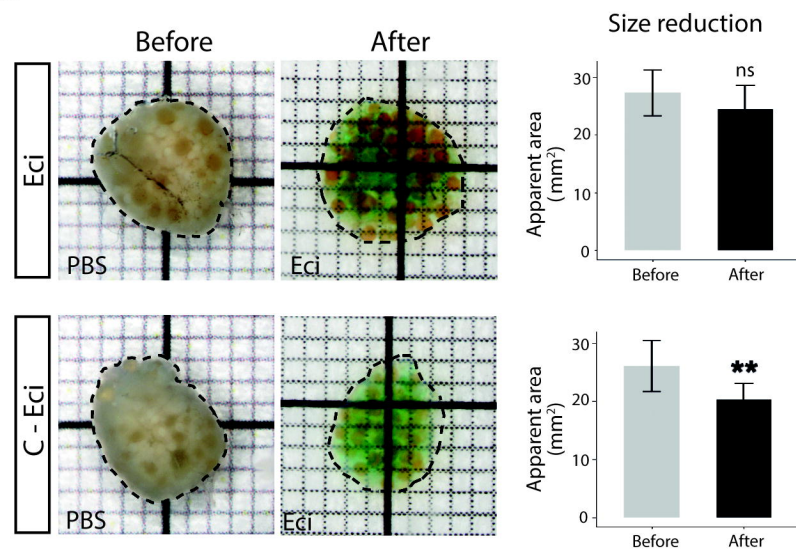
A



C



D



B

