

# Interaction of the spike protein RBD from SARS-CoV-2 with ACE2: similarity with SARS-CoV, hot-spot analysis and effect of the receptor polymorphism

Houcemeddine Othman<sup>1</sup>, Zied Bouzlama<sup>2</sup>, Jean-Tristan Brandenburg<sup>1</sup>, Jorge da Rocha<sup>1</sup>, Yosr Hamdi<sup>3</sup>, Kais Ghedira<sup>4</sup>, Najet-Srairi Abid<sup>5</sup>, Scott Hazelhurst<sup>1,6</sup>

<sup>1</sup> Sydney Brenner Institute for Molecular Bioscience, Faculty of Health Sciences, University of the Witwatersrand, Johannesburg, South Africa.

<sup>2</sup> Laboratory of veterinary epidemiology and microbiology LR16IPT03. Institut Pasteur of Tunis. University of Tunis El Manar, Tunis, Tunisia.

<sup>3</sup> Laboratory of Biomedical Genomics and Oncogenetics, LR16IPT05, Pasteur Institute of Tunis, University of Tunis El Manar, Tunis, Tunisia.

<sup>4</sup> Laboratory of Bioinformatics, Biomathematics and Biostatistics - LR16IPT09, Pasteur Institute of Tunis, University of Tunis El Manar, Tunis, Tunisia.

<sup>5</sup> Université de Tunis El Manar, Institut Pasteur de Tunis, LR11IPT08 Venins et Biomolécules Thérapeutiques, 1002, Tunis, Tunisia.

<sup>6</sup> School of Electrical and Information Engineering, University of the Witwatersrand, Johannesburg, South Africa.

\* houcemoo@gmail.com

## Abstract

The spread of the COVID-19 caused by the SARS-CoV-2 outbreak has been growing since its first identification in December 2019. The publishing of the first SARS-CoV-2 genome made a valuable source of data to study the details about its phylogeny, evolution, and interaction with the host. Protein-protein binding assays have confirmed that Angiotensin-converting enzyme 2 (ACE2) is more likely to be the cell receptor via which the virus invades the host cell. In the present work, we provide an insight into the interaction of the viral spike Receptor Binding Domain (RBD) from different coronavirus isolates with host ACE2 protein. By calculating

the binding energy between RBD and ACE2, we highlighted the putative jump in the affinity from a progenitor form of SARS-CoV-2 to the current virus responsible for COVID-19 outbreak. Our result was consistent with the phylogeny analysis and corroborates the opinion that the interface segment of the spike protein RBD might be acquired by SARS-CoV-2 via a complex evolutionary process rather than mutation accumulation. We also highlighted the relevance of Q493 and P499 amino acid residues of SARS-CoV-2 RBD for binding to hACE2 and maintaining the stability of the interface. Moreover, we show from the structural analysis that it is unlikely for the interface residues to be the result of human engineering. Finally, we studied the impact of eight different variants located at the interaction surface of ACE2, on the complex formation with SARS-CoV-2 RBD. We found that none of them is likely to disrupt the interaction with the viral RBD of SARS-CoV-2.

key words: COVID-19, ACE2, viral spike Receptor Binding Domain, homology-based protein-protein docking, variants.

## 1 Introduction

The coronavirus SARS-CoV-2 (previously known as nCoV-19) has been associated with the recent epidemic of acute respiratory distress syndrome [1]. Recent studies have suggested that the virus binds to the ACE2 receptor on the surface of the host cell using the spike protein and explored the binary interaction of these two partners [8,22]. In this work, we focused our analysis on the interface residues to get insight into four main subjects: (1) The architecture of the interface of the spike protein and whether its evolution in many isolates supports an increase in affinity toward the ACE2 receptor; (2) How the affinity of SARS-COV-2-RBD and SARS-CoV-RBD toward different ACE2 homologous proteins from different species is dictated by a divergent interface sequences (3); A comparison of the interaction hotspots between SARS-CoV and SARS-CoV-2; and finally, (4) whether any of the studied ACE2 variants may show a different binding property compared to the reference allele. To tackle these questions we used multiscale modelling approaches combined to sequence and phylogeny analysis.

## 2 Materials and Methods

### 2.1 Sequences and data retrieval

Full genome sequences of 10 Coronaviruses isolates were retrieved from NCBI GeneBank corresponding to the following accessions: AY485277.1 (SARS coronavirus Sino1-11), FJ882957.1 (SARS coronavirus MA15), MG772933.1 (Bat SARS-like coronavirus isolate bat-SL-CoVZC45), MG772934.1 (Bat SARS-like coronavirus isolate bat-SL-CoVZXC21), DQ412043.1 (Bat SARS coronavirus Rm1), AY304488.1 (SARS coronavirus SZ16), AY395003.1 (SARS coronavirus ZS-C), KT444582.1 (SARS-like coronavirus WIV16), MN996532.1 (Bat coronavirus RaTG13) in addition to Wuhan seafood market pneumonia virus commonly known as SARS-CoV-2 (accession MN908947.3).

The sequences of the surface glycoprotein were extracted from the Coding Segment (CDS) translation feature from each genome annotation or by locally aligning the protein from SARS-CoV-2 with all possible ORFs from the translated genomes. ACE2 orthologous sequences from Human (Uniprot sequence Q9BYF1), Masked palm civet (NCBI protein AAX63775.1 from *Paguma larvata*), Chinese rufous horseshoe bat (NCBI protein AGZ48803.1 from *Rhinolophus sinicus*), King cobra snake (NCBI protein ETE61880.1 from *Ophiophagus hannah*), chicken (NCBI protein XP\_416822.2, *Gallus gallus*), domestic dog (NCBI protein XP\_005641049.1, *Canis lupus familiaris*), pig (NCBI protein XP\_020935033.1, *Sus scrofa*) and Brown rat (NCBI protein NP\_001012006.1 *Rattus norvegicus*) were also computed and retrieved.

Human variants of the ACE2 gene were collected from the gnomAD database . Only variants that map to the protein coding region and belonging to the interface of interaction with the RBD of the spike protein were retained for further analyses.

### 2.2 Sequence analysis and phylogeny tree calculation

MAFFT was used to align the whole genome sequences and the protein sequences of viral RBDs [5] (Supplementary Materials 1). For the genome comparison, we selected the best site model based on lowest Bayesian

Information Criterion calculated using model selection tool implemented in MEGA 6 software [16]. The General Time Reversible (GTR) model was chosen as the best fitting model for nucleotide substitution with discrete Gamma distribution (+G) with 5 rate categories. For the RBD sequences, the best substitution model for ML calculation was selected using a model selection tool implemented on MEGA 6 software based on the lowest Bayesian Information criterion (BIC) score. Therefore, the WAG model [19] using a discrete Gamma distribution (+G) with 5 rate categories has been selected.

Phylogenetic trees were generated using a maximum likelihood (ML) method in MEGA 6. The consistency of the topology, for the RBD sequences, was assessed using a bootstrap method with 1000 replicates. The resulting phylogenetic tree was edited with iTOL [9].

### **2.3 Homology based protein-protein docking and binding energy estimation**

The co-crystal structure of the spike protein of SARS coronavirus complexed to human human-civet chimeric receptor ACE2 was solved at 3 Å resolution (PDB code 3SCL). We used this structure as a template to build the complex of spike protein from different virus isolates with the human ACE2 protein (Uniprot sequence Q9BYF1). The template sequences of the ligand (spike protein) and the receptor (ACE2) were aligned locally with the target sequences using the program Water from the EMBOSS package [11]. Modeller version 9.22 [13] was then used to predict the complex model of each spike protein with the ACE2 using a slow refining protocol. For each model, we generated ten conformers from which we selected the model with the best DOPE score [14].

To calculate the binding energy we used the PRODIGY server [21]. The Calculation of contribution of each amino acid in a protein partner was computed with MM-GBSA method implemented in the HawkDock server [18]. Different 3D structures of hACE2, each comprising one of identified variants, were modeled using the BuildModel module of FoldX5 [2]. Because it is more adapted to predict the effect of punctual variations of amino acids, we used DynaMut at this stage of analysis [12].

## 2.4 Flexibility analysis

We ran a protocol to simulate the spike RBD fluctuation of SARS-CoV-2 and SARS-Cov using the standalone program CABS-flex (version 0.9.14) [7]. Three replicates of the simulation with different seeds were conducted using a temperature value of 1.4 (dimensionless value related to the physical temperature). The protein backbone was kept fully flexible and the number of the Monte carlo cycles was set to 100.

## 3 Results

### Sequence and phylogeny analysis

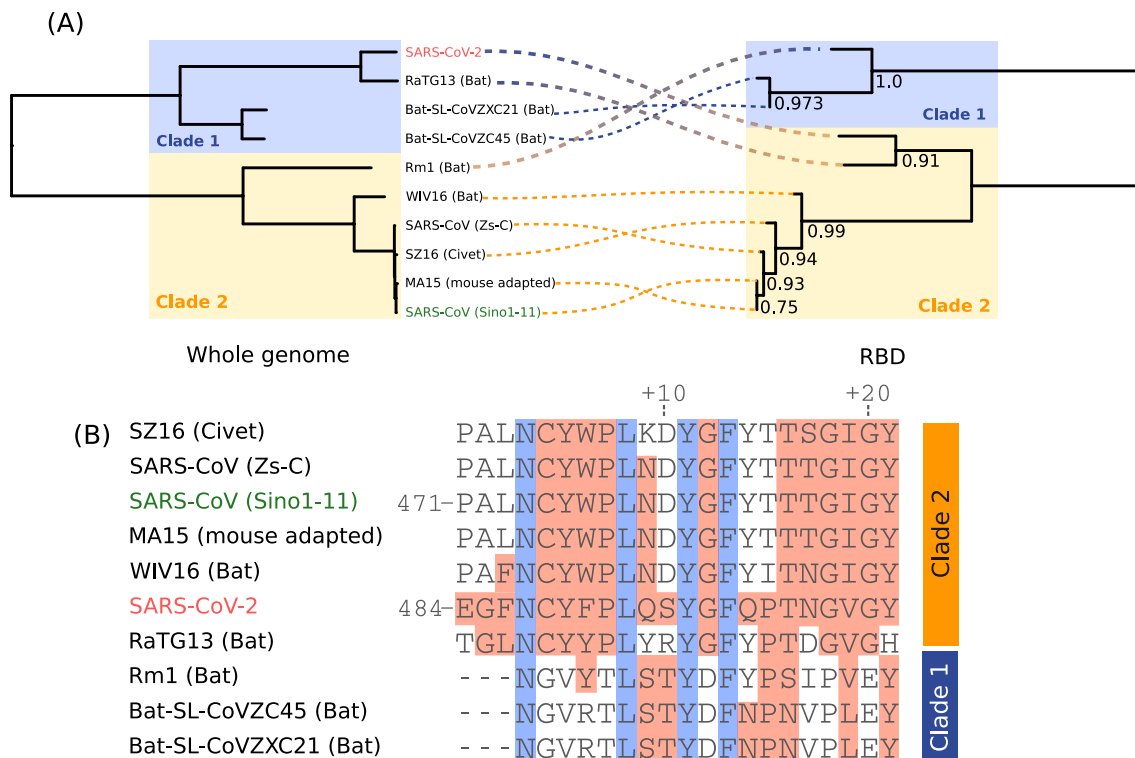
Phylogenetic analysis of the different RBD sequences revealed two well supported clades. Clade 2 includes SARS-CoV-2, RatG13, SZ16, ZS-C, WIV16, MA15, and SARS-CoV-Sino1-11 isolates (Figure 1A). SARS-CoV-2 and RatG13 sequences are the closest to the common ancestor of this clade. Clade 1 includes Rm1 isolate, Bat-SL-CoVZC45 and Bat-SL-CoVZXC21. These three isolates are closely related to SARS-CoV-2 as revealed by the phylogenetic tree constructed from the entire genome (Figure 1A). The exact tree topology is reproduced when we used only the RBD segment corresponding to the interface residues with hACE2. This is a linear sequence spanning from residue N481 to N501 in SARS-CoV-2.

Multiple sequence alignment showed that the interface segment of SARS-CoV-2 shares higher similarity to sequences from clade 2 (Figure 1B). However, we noticed that S494, Q498 and P499 are exclusively similar to their equivalent amino acids in sequences from clade 1. SARS-CoV-2 interface sequence is closely related to RaTG13 sequence, isolated from *Rhinolophus affinis* bat.

### 3.1 Prediction of the RBD/hACE2 complex structure

To investigate whether the interface of the spike protein isolates evolves by increasing the affinity toward the ACE2 receptor in the final host, we predicted the interaction models of the envelope anchored spike protein

6



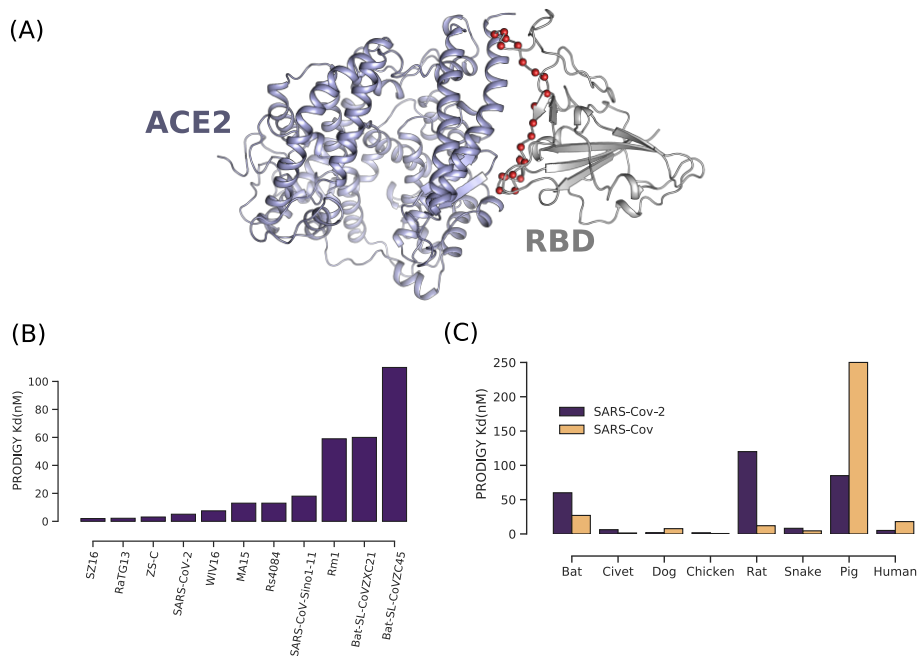
**Figure 1.** Phylogeny and sequence analysis based on full genome and RBDs from the different isolates included in this study. (A) Phylogeny trees are opposed to each other to show the clade discrepancies and discontinuous lines shows the equivalent taxon between each tree. (B) Multiple sequence alignment of the interface residues of RBD. Blocks in red indicate the residues with similar biochemical properties to the positions in SARS-CoV-2. Conserved residues are colored in blue.

(SP) from several clinically relevant Coronavirus isolates with the human receptor ACE2 (hACE2) (PDB files for the complexes are Supplementary Materials 1). The construction of the complex applies a comparative-based approach that uses a template structure in which both partners (ligand and receptor) are closely related to those in the target system respectively. In our study, we only modeled the interaction of the RBD which was shown to be implicated in the physical interaction with ACE2 receptor (Figure 2A). The lowest sequence identity of the modeled spike proteins as well as those of any of the orthologous ACE2 sequences (Human, civet, bat, pig, rat, chicken and snake) do not fall below 63% compared to their respective templates. At such values of sequence identities between the equivalent partners of the receptor or the ligand, it is expected that the template and

the target complexes share the same binding mode [6].

### 3.2 Analysis of energy Interaction of hACE2 with other virus

We calculated the binding energy of RBD from different virus isolates interacting with hACE2 using the PRODIGY method (Figure 2b). The binding energies are converted to dissociation constant estimations ( $Kd$ ). RBDs from bat-SL-CoVZC45, bat-SL-CoVZXC21 and Rm1-Cov show the highest values (least favorable) which are all above 50 nM. All the other estimations fall below 18 nM. The interaction between hACE2 and the RBDs of SARS-CoV-2 isolate (Whuhan-Hu-1) and the SARS-CoV-Sino1-11 show  $Kd$  values of 5.1 and 18 nM, respectively.



**Figure 2.** Homology based protein-protein docking of RBD/ACE2 and binding energy analysis of spike RBD with ACE2 receptor. (A) Homology based protein-protein docking complex of SARS-CoV-2 RBD with hACE2. The red spheres are the interface residues of the RBD. (B) Binding energies were converted to  $Kd$  values calculated for spike RBD from different coronavirus isolates interacting with hACE2. (C) Dissociation constant estimation calculated between SARS-CoV-2 RBD and homologous ACE2 from different model animals.

### 3.3 Interactin of RBD from SARS-CoV-2 and SARS-CoV with different ACE2 orthologues

We made this analysis to investigate the tendency of SARS-CoV-2 and SARS-CoV to interact with different orthologous forms of ACE2 which is dictated by the divergence in their interacting surfaces. Homology based protein-protein docking was conducted to generate the interaction model of SARS-CoV-2 RBD with ACE2 receptor from different animal species (Figure 2C). We noticed that for the civet, dog, chicken and snake forms, the interaction energy is very low and very similar either for SARS-CoV-2 or SARS-CoV. Although the  $Kd$  are relatively low for the rat and bat forms interacting with SARS-CoV RBD, those of SARS-CoV-2 are high and go beyond 50 nM. On the other hand, it seems that the interaction with pig ACE2 is more favorable for SARS-CoV-2 isolate since the estimated  $Kd$  is three folds lesser compared to SARS-CoV-2.

### 3.4 Decomposition of the interaction energy

The MM-GBSA calculation allowed us to assign the contribution in the binding energy of each amino acid in the interface with hACE2. We carried this analysis using both sequences of the SARS-CoV-2 Wuhan-Hu-1 (Figure 3A) and the Sino1-11 SARS-CoV (Figure 3B) isolates (Supplementary Materials 2). Residues F486, Y489, Q493, G496, T500 and N501 of SARS-CoV-2 RBD form the hotspots of the interface with hACE2 protein were investigated (we only consider values  $> 1$  or  $< 1$  kcal/mol to ignore the effect due to the thermal fluctuation). All these amino acids form three patches of interaction spread along the linear interface segment (Figure 3C): two from the N and C termini and one central. T500 establishes two hydrogen bonds using its side and main chains with Y41 and N330 of hACE2. N501 forms another hydrogen bond with ACE2 residue K353 buried within the interface. On the other hand, SARS-CoV RBD interface contains five residues (Figure 3D), L473, Y476, Y485, T487 and T488 corresponding to the equivalent hotspot residues of RBD from SARS-CoV-2 F487, Y490, G497, T501 and N502. Therefore, Q493 as a hotspot amino acid is specific to SARS-CoV-2 interface. The equivalent residue N480 in SARS-CoV only shows a non-significant contribution of 0.18 kcal/mol.



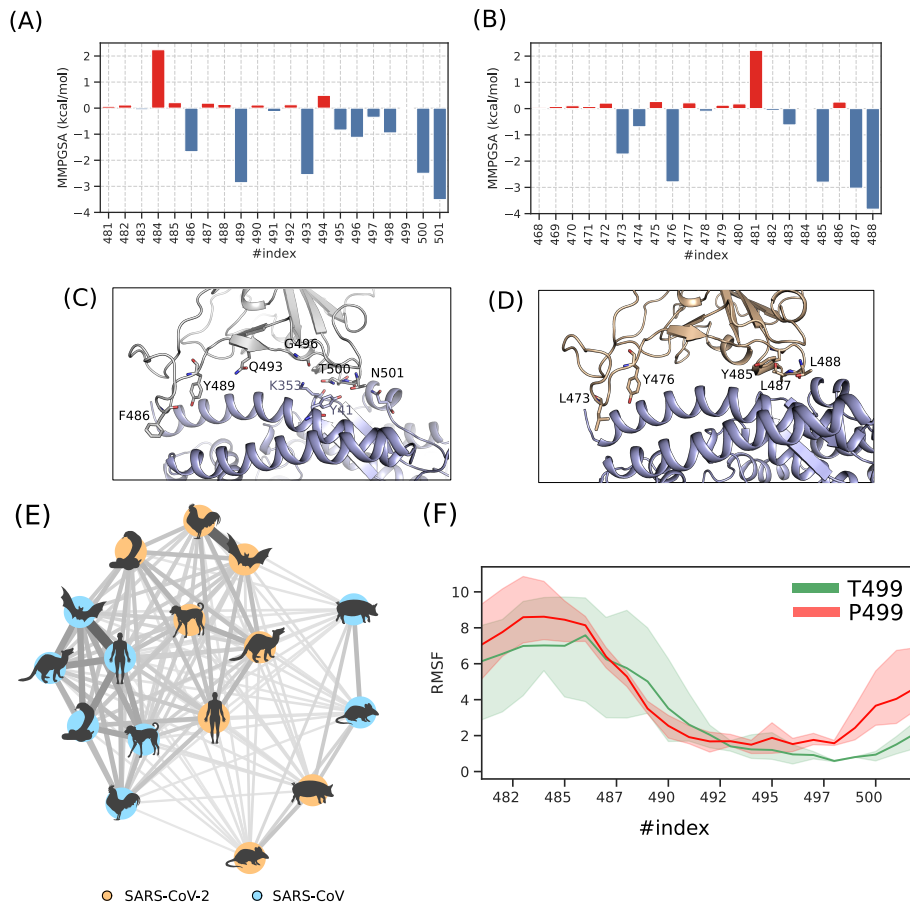
The similarity matrix analysis was conducted to assess the divergence of the interaction interface of RBDs qualitatively, i.e the specific set of residues implicated in the interaction with ACE2, and quantity, i.e the contribution of each residue in the binding energy. The similarity matrix was calculated from free energy decomposition of interface residues of RBDs from SARS-CoV-2 and SARS-CoV in complex with ACE2 orthologous sequences and reported as a network representation (Figure 3E and Figure 1 and 2 in Supplementary Materials 2). We noticed the existence of densely interconnected edges involving all the protein-protein complexes for SARS-CoV-2 and SARS-CoV except those involving ACE2 from *Sus scrofa* and *Rattus norvegicus*. Complexes involving RBD SARS-CoV-2 show less intrinsèque similarity compared to RBDs of SARS-CoV. However, similarity scores tend to be uniform in the group involving ACE2 from humans, civet, dog, bat, snake, and chicken. The complex including hACE2 does not seem to diverge from the rest of the members of the SARS-CoV-2 group such as the case of textit*Sus scrofa* and *Rattus norvegicus*.

### 3.5 Flexibility analysis

Sequence analysis and the visual inspection of RBD/hACE2 complex might reflect the substitution of P499 in SARS-CoV-2 RBD as a form of adaptation toward a better affinity with the receptor. In order to further investigate its role, we performed a flexibility analysis using a reference structure (SARS-CoV-2 RBD containing P499) and an *in silico* mutated form P499T, a residue found in SARS-CoV and most of the clade 2. Our results show that the mutation caused a significant decrease in stability for nine residues of the interface corresponding to segment 482-491 (Figure 3F). Indeed, the RMSF variability per amino acid for this sequence increases compared to the reference structure.

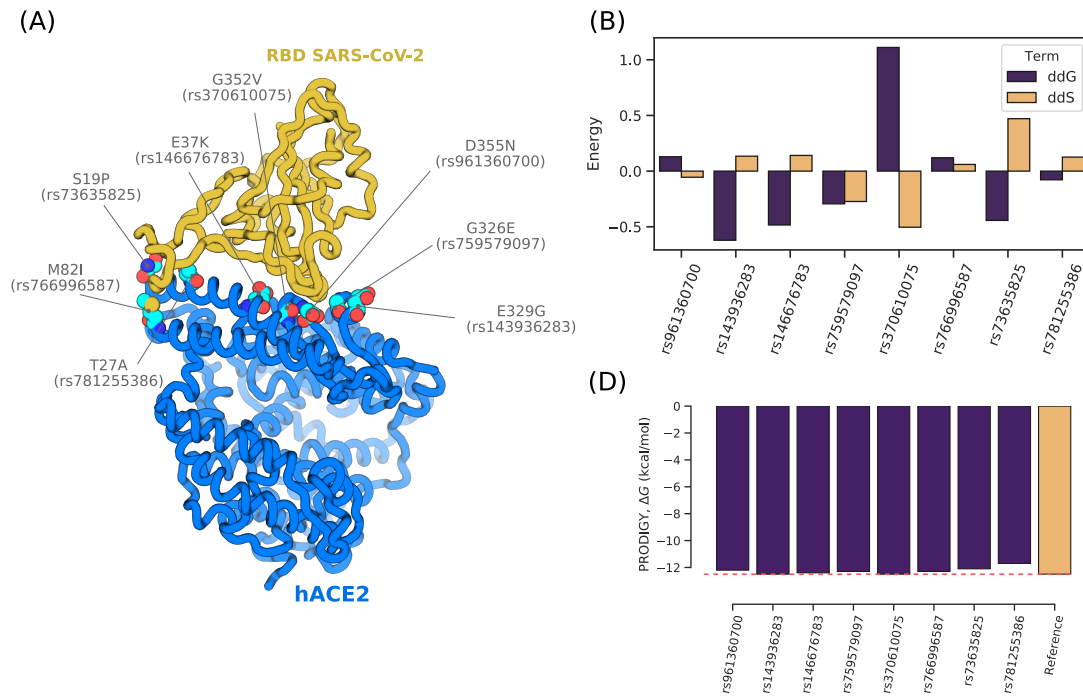
### 3.6 Analysis of ACE2 variability and affinity with the virus

A total of eight variants of hACE2 that map to the interaction surface are described in the gnomAD database (Figure 4A). All these variants are rare (Table 1) and mostly found in European non-Finnish and African



**Figure 3.** Analysis of the interaction between RBD and hACE2. Decomposition of the MMGBSA energy for each amino acid of the binding surface from SARS-CoV-2 (A) and SARS-CoV Sino1-11 isolate (B). Position of the hotspot residues of the complexes RBD-SARS-CoV-2/hACE2 (C) and RBD-SARS-CoV/hACE2 (D). (E) similarity matrix in network representation calculated from the free energy decomposition profiles of complexes involving SARS-CoV-2 and SARS-CoV RBDs interacting with different orthologous sequences of ACE2. (F) Flexibility of RBD interface residue expressed as Root Mean Square Fluctuation (RMSF) for two forms of RBD-SARS-CoV-2, T499 and P499.

populations. Considering both the enthalpy ( $ddG$ ) and the vibrational entropy in our calculation ( $ddS$ ), we found no significant change ( $> 1$  or  $< 1$  kcal/mol) in the folding energy of the complex (Figure 4B) neither the interaction energy of the protein-protein partners (Figure 4C).



**Figure 4.** Analyzing the interaction of SARS-CoV-2 RBD with different variants of hACE2. (A) Localization of the variants, labeled by the amino acid changing and the RS identity, on the interaction surface of hACE2 and RBD from SARS-CoV-2. Estimation of the changing upon mutation for hACE2 variants calculated for enthalpy (ddG) and entropy (ddS) terms of the folding energy calculated with DynaMut (B) and the interaction energy calculated with PRODIGY (D).

## 4 Discussion

Since the Covid-2019 outbreak, several milestone papers have been published to examine the particularity of SARS-CoV-2 spike protein and its putative interaction with ACE2 as a receptor [20]. In the current study, we focused our analysis on the interface segments of SARS-CoV-2 spike RBD interacting with ACE2 from different species by estimating interaction energy profiles.

We have studied the effect of eight variants of ACE2 in order to detect polymorphisms that may increase or decrease the virulence in the host. We concluded that if ACE2 is the only route for the infection in humans, variants interacting physically with RBD are not likely to disrupt the formation of the complex and would have a marginal effect on the affinity. Therefore, it is unlikely that any form of resistance to the virus, related to

the ACE2 gene, exists. However, this analysis merits to be investigated in depth in different ethnic groups for a better assessment of the contribution of genetic variability in host-pathogen interaction.

The binding of SARS-CoV-2 RBD to different forms of ACE2 shows similar values compared to SARS-CoV which is in agreement with the ability of the virus to cross the species barrier. However, although we estimated low  $Kd$  value between SARS-CoV RBD and *Gallus gallus* ACE2, there have been no reported cases of SARS-CoV isolated from chicken. On the other hand, while  $Kd$  is high for SARS-CoV RBD interacting with porcine ACE2, there are only few reported cases of such type [15]. Indeed, host-pathogen interaction is a complex process unlikely to be controlled only by the binding of the spike protein with ACE2 [3]. For model animals where  $Kd$  values are very low, ACE2 analysis may play a key role in targeting the main animal reservoir of SARS-CoV-2. For high  $Kd$  values, other factors might regulate the infection including the implication of different receptors or the response of the immune system but that does not mean that the infection is unlikely to occur.

Whole-genome phylogenetic analysis of the different isolates included in this study is consistent with previous works that place the Wuhan-Hu-1 isolate close to Bat-SL-CoVZC45 and Bat-SL-CoVZXC21 isolates [10, 17] within the Betacoronavirus genus. The use of RBD sequences, however, places the virus in a clade that comprises SARS-CoV related homologs including isolates from Bat and Civet. The clade swapping as seen in figure 1A, seems also to occur for RaTG13 and Rm1 isolated from bat. This is expected as the use of different phylogenetic markers may considerably affect the topology of the tree. However, given the functional implication of the spike RBD in host-pathogen infection, we have raised the question about where the virus obtained its RBD binding interface. The binding of the spike glycoprotein to ACE2 receptor requires a certain level of affinity. In the case where the RBD evolves from an ancestral form closer to that of Bat-SL-CoVZC45 and Bat-SL-CoVZXC21, we expected a decrease of the binding energy through the evolution process following incremental changes in the RBD. In such a scenario, we presume that there are other intermediary forms of coronavirus that describe such variation of the binding energy to reach a level where the pathogen can cross the species barriers and infect

humans with high affinity toward hACE2. On the other hand, our results show that the binding energy and the interface sequence of SARS-CoV-2 RBD are closer to SARS-CoV related isolates (either from Human or other species). Therefore a recombination event involving the spike protein that might have occurred between SARS-CoV and an ancestral form of the current SARS-CoV-2 virus might be also possible. This will allow for the virus to acquire a minimum set of residues for the interaction with hACE2. The recombination in the spike protein gene has been previously suggested by Wei et al in their phylogenetic analysis [4]. Thereafter, incremental changes in the binding interface segment will occur in order to reach a better affinity toward the receptor. One of these changes may involve P499 residue which substitution to threonine seems to drastically destabilize the interface segment and has a distant effect. Moreover, the decomposition of the interaction energy showed that 5 out of 6 hotspot amino acids in SARS-CoV-2 have their equivalent in SARS-CoV including N501. Contrary to what Wan et al [17] have stated, the single mutation N501T does not seem to enhance the affinity. Rather, the residue Q493 might be responsible for such higher affinity due to a better satisfaction of the Van der Waals by the longer polar side chain of asparagine. Indeed, when we made the same analysis while mutating Q493 to N493, the favorable contribution decreases from -2.55 kcal/mol to a non significant value of -0.01 kcal/mol, thus supporting our claim.

No major divergence of the interaction interface of SARS-CoV-2 RBD with hACE2 was noticed from the similarity matrix analysis. This suggests that the molecular elements required for the binding with the receptor might also be involved in the interaction with other orthologous forms of ACE2 and that these elements are not optimized specifically for the human form. Therefore, it is unlikely that the interface of RBD from SARS-CoV-2 is a result of human intervention aiming to increase the affinity toward ACE2. For example, residue E484 contributes unfavorably to the binding energy with 2.24 kcal/mol due to an electrostatic repulsion with E75 from hACE2. This residue is an apparent choice for engineering a protein-protein complex with high affinity by substituting E484 with a polar residue. It is, however, noteworthy that the lesser homogeneity of the nodes of SARS-CoV-2 group, in comparison to SARS-CoV, may suggest a higher tolerance

for the mutation of the new virus which would allow it to cross the species barrier more easily and to efficiently optimize the interaction in the host.

## Declaration of competing interest

None of the authors has financial interests or conflicts of interest related to this research.

## Acknowledgement

This work was supported by the South African National Research Foundation (NRF) and the Tunisian Ministry of Higher Education and Scientific Research. The author H. Othman would like to thank Shahine Othman for being understanding about his absence and for not being able to bring him the marshmallow candy because of the COVID-19 outbreak.

## References

1. J. F. Chan, S. Yuan, K. H. Kok, K. K. To, H. Chu, J. Yang, F. Xing, J. Liu, C. C. Yip, R. W. Poon, H. W. Tsoi, S. K. Lo, K. H. Chan, V. K. Poon, W. M. Chan, J. D. Ip, J. P. Cai, V. C. Cheng, H. Chen, C. K. Hui, and K. Y. Yuen. A familial cluster of pneumonia associated with the 2019 novel coronavirus indicating person-to-person transmission: a study of a family cluster. *Lancet*, 395(10223):514–523, Feb 2020.
2. J. Delgado, L. G. Radusky, D. Cianferoni, and L. Serrano. FoldX 5.0: working with RNA, small molecules and a new graphical interface. *Bioinformatics*, 35(20):4168–4169, Oct 2019.
3. D. Janies, F. Habib, B. Alexandrov, A. Hill, and D. Pol. Evolution of genomes, host shifts and the geographic spread of sars-cov and related coronaviruses. *Cladistics*, 24(2):111–130, 2008.
4. W. Ji, W. Wang, X. Zhao, J. Zai, and X. Li. Cross-species transmission of the newly identified coronavirus 2019-nCoV. *J. Med. Virol.*, 92(4):433–440, Apr 2020.

5. K. Katoh, J. Rozewicki, and K. D. Yamada. MAFFT online service: multiple sequence alignment, interactive sequence choice and visualization. *Brief. Bioinformatics*, 20(4):1160–1166, 07 2019.
6. P. J. Kundrotas, Z. Zhu, J. Janin, and I. A. Vakser. Templates are available to model nearly all complexes of structurally characterized proteins. *Proc. Natl. Acad. Sci. U.S.A.*, 109(24):9438–9441, Jun 2012.
7. M. Kurcinski, T. Oleniecki, M. P. Ciemny, A. Kuriata, A. Kolinski, and S. Kmiecik. CABS-flex standalone: a simulation environment for fast modeling of protein flexibility. *Bioinformatics*, 35(4):694–695, 02 2019.
8. J. Lan, J. Ge, J. Yu, S. Shan, H. Zhou, S. Fan, Q. Zhang, X. Shi, Q. Wang, L. Zhang, and X. Wang. Crystal structure of the 2019-ncov spike receptor-binding domain bound with the ace2 receptor. *bioRxiv*, 2020.
9. I. Letunic and P. Bork. Interactive Tree Of Life (iTOL) v4: recent updates and new developments. *Nucleic Acids Res.*, 47(W1):W256–W259, Jul 2019.
10. D. Paraskevis, E. G. Kostaki, G. Magiorkinis, G. Panayiotakopoulos, G. Sourvinos, and S. Tsiodras. Full-genome evolutionary analysis of the novel corona virus (2019-nCoV) rejects the hypothesis of emergence as a result of a recent recombination event. *Infect. Genet. Evol.*, 79:104212, Apr 2020.
11. P. Rice, I. Longden, and A. Bleasby. EMBOSS: the European Molecular Biology Open Software Suite. *Trends Genet.*, 16(6):276–277, Jun 2000.
12. C. H. Rodrigues, D. E. Pires, and D. B. Ascher. DynaMut: predicting the impact of mutations on protein conformation, flexibility and stability. *Nucleic Acids Res.*, 46(W1):W350–W355, 07 2018.
13. A. Sali and T. L. Blundell. Comparative protein modelling by satisfaction of spatial restraints. *J. Mol. Biol.*, 234(3):779–815, Dec 1993.

14. M. Y. Shen and A. Sali. Statistical potential for assessment and prediction of protein structures. *Protein Sci.*, 15(11):2507–2524, Nov 2006.
15. Z. Shi and Z. Hu. A review of studies on animal reservoirs of the SARS coronavirus. *Virus Res.*, 133(1):74–87, Apr 2008.
16. K. Tamura, G. Stecher, D. Peterson, A. Filipski, and S. Kumar. MEGA6: Molecular Evolutionary Genetics Analysis version 6.0. *Mol. Biol. Evol.*, 30(12):2725–2729, Dec 2013.
17. Y. Wan, J. Shang, R. Graham, R. S. Baric, and F. Li. Receptor recognition by novel coronavirus from Wuhan: An analysis based on decade-long structural studies of SARS. *J. Virol.*, Jan 2020.
18. G. Weng, E. Wang, Z. Wang, H. Liu, F. Zhu, D. Li, and T. Hou. HawkDock: a web server to predict and analyze the protein-protein complex based on computational docking and MM/GBSA. *Nucleic Acids Res.*, 47(W1):W322–W330, Jul 2019.
19. S. Whelan and N. Goldman. A General Empirical Model of Protein Evolution Derived from Multiple Protein Families Using a Maximum-Likelihood Approach. *Molecular Biology and Evolution*, 18(5):691–699, 05 2001.
20. D. Wrapp, N. Wang, K. S. Corbett, J. A. Goldsmith, C. L. Hsieh, O. Abiona, B. S. Graham, and J. S. McLellan. Cryo-EM structure of the 2019-nCoV spike in the prefusion conformation. *Science*, Feb 2020.
21. L. C. Xue, J. P. Rodrigues, P. L. Kastritis, A. M. Bonvin, and A. Vangone. PRODIGY: a web server for predicting the binding affinity of protein-protein complexes. *Bioinformatics*, 32(23):3676–3678, 12 2016.
22. R. Yan, Y. Zhang, Y. Guo, L. Xia, and Q. Zhou. Structural basis for the recognition of the 2019-ncov by human ace2. *bioRxiv*, 2020.



**Table 1.** Population frequencies of hACE2 missense variants located on the interaction surface with SARS-CoV-2 RBD ( $\times 10^{-5}$ )

rs ID	European (non-Finnish)	African	Latino	Ashkenazi Jewish	East Asian	South Asian	Finnish	Other	Global
rs961360700	2.59	0	0	0	0	0	0	0	1.17
rs143936283	6.51	0	0	0	0	0	0	19.05	3.443
rs146676783	0	0.105	0	0	0	0	32.22	0	3.897
rs759579097	0	0.1056	0	0	0	0	0	0	0.9842
rs370610075	1.274	0	0	0	0	0	0	0	0.5756
rs766996587	0	26.23	0	0	0	0	0	0	2.442
rs73635825	0	332.3	0	0	0	0	0	18.82	31.29
rs781255386	0	0	7.303	0	0	0	0	0	1.091