

Deducing the N- and O- glycosylation profile of the spike protein of novel coronavirus SARS-CoV-2

Asif Shajahan, Nitin T. Supekar, Anne S. Gleinich, and Parastoo Azadi*.

Complex Carbohydrate Research Center, The University of Georgia, Athens, GA 30602

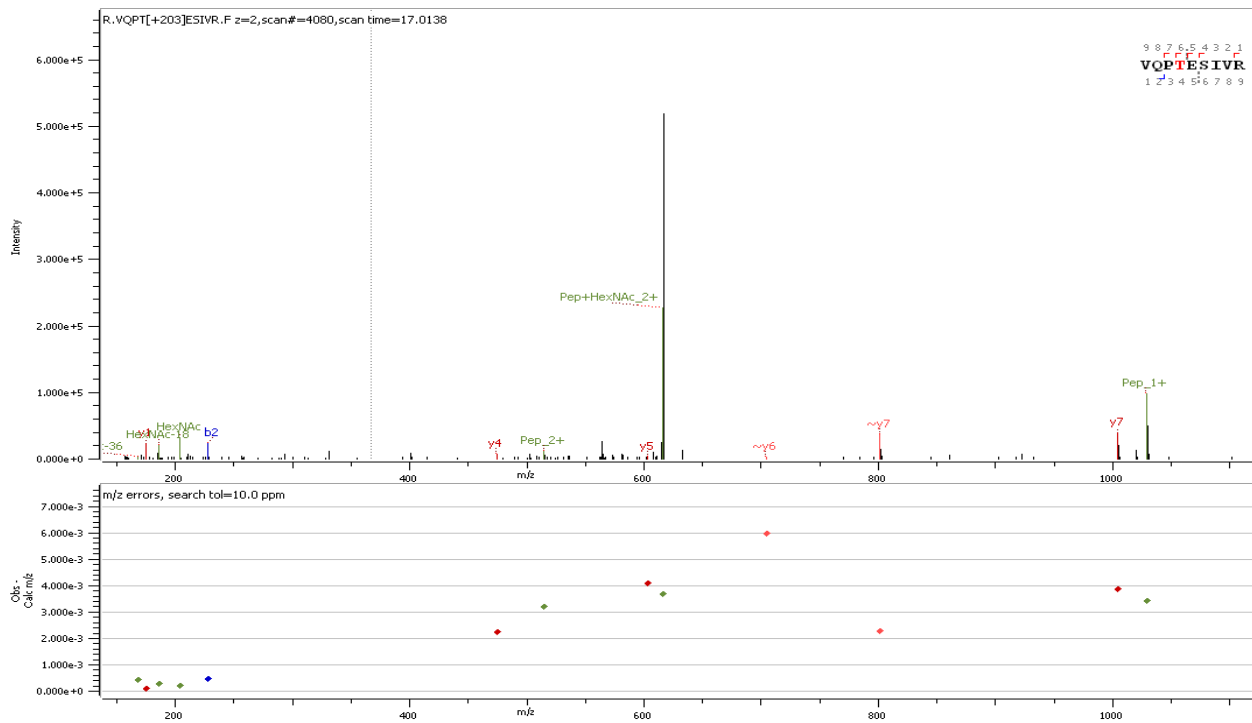
*Corresponding Author: Parastoo Azadi, Ph.D. (azadi@uga.edu)

Supplementary Information

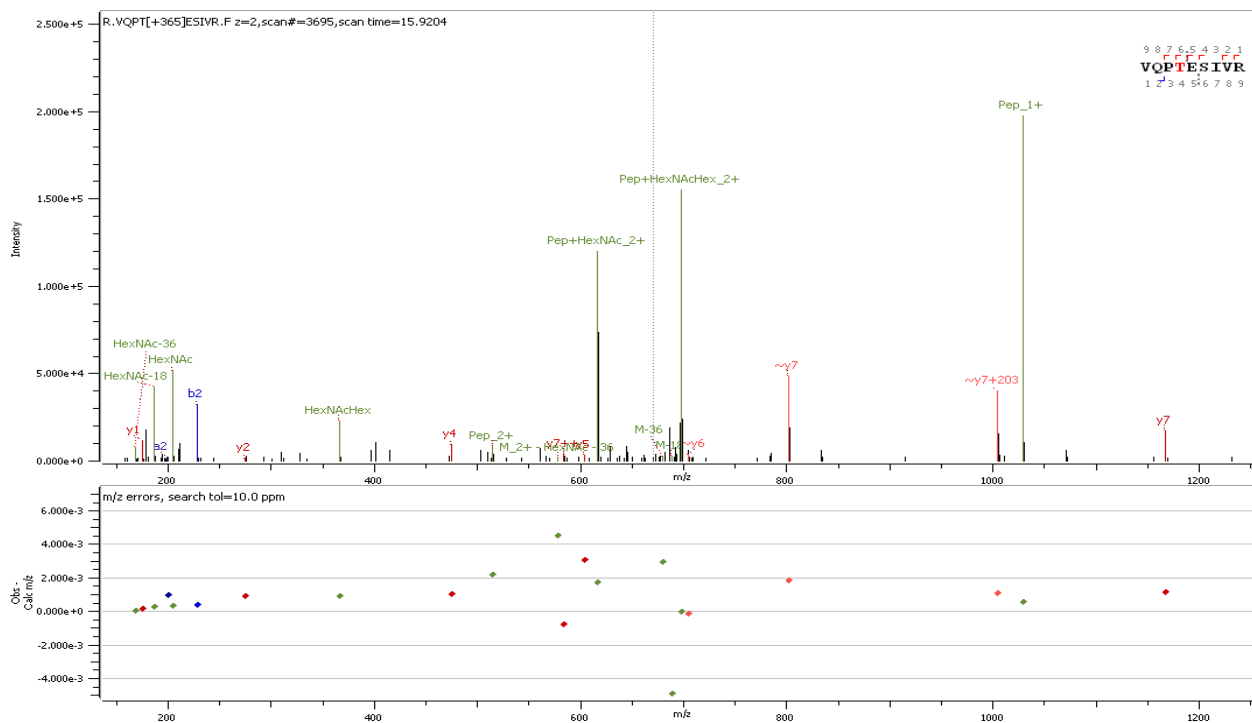
Table of Contents

Description	Page No.
Supp. Figure S1-S4: Spectra of intact O-glycopeptide with assigned O-glycans at T323 & S325	S-2 to S-3
Supp. Figure S5: Spectra of non-glycosylated peptide at N17	S-4
Supp. Figure S6: Spectra of intact N-glycopeptide with assigned N-glycan at N61	S-4
Supp. Figure S7: Spectra of intact N-glycopeptide with assigned N-glycans at N74	S-5
Supp. Figure S8: Spectra of intact N-glycopeptide with assigned N-glycans at N122	S-5
Supp. Figure S9: Spectra of intact N-glycopeptide with assigned N-glycan at N149	S-6
Supp. Figure S10: Spectra of intact N-glycopeptide with assigned N-glycan at N165	S-6
Supp. Figure S11: Spectra of intact N-glycopeptide with assigned N-glycan at N234	S-7
Supp. Figure S12: Spectra of intact N-glycopeptide with assigned N-glycan at N282	S-7
Supp. Figure S13: Spectra of intact N-glycopeptide with assigned N-glycan at N331	S-8
Supp. Figure S14: Spectra of intact N-glycopeptide with assigned N-glycan at N343	S-8
Supp. Figure S15: Spectra of non-glycosylated peptide at N603	S-9
Supp. Figure S16: Spectra of intact N-glycopeptide with assigned N-glycan at N616	S-9
Supp. Figure S17: Spectra of intact N-glycopeptide with assigned N-glycan at N657	S-10
Supp. Figure S18: Spectra of intact N-glycopeptide with assigned N-glycan at N801	S-10
Supp. Figure S19: Spectra of intact N-glycopeptide with assigned N-glycan at N1074	S-11
Supp. Figure S20: Spectra of intact N-glycopeptide with assigned N-glycan at N1098	S-11
Supp. Figure S21: Spectra of non-glycosylated peptide at N1158	S-12
Supp. Figure S22: Spectra of non-glycosylated peptide at N1173	S-12
Supp. Figure S23: Spectra of intact N-glycopeptide with assigned N-glycan at N1194	S-13

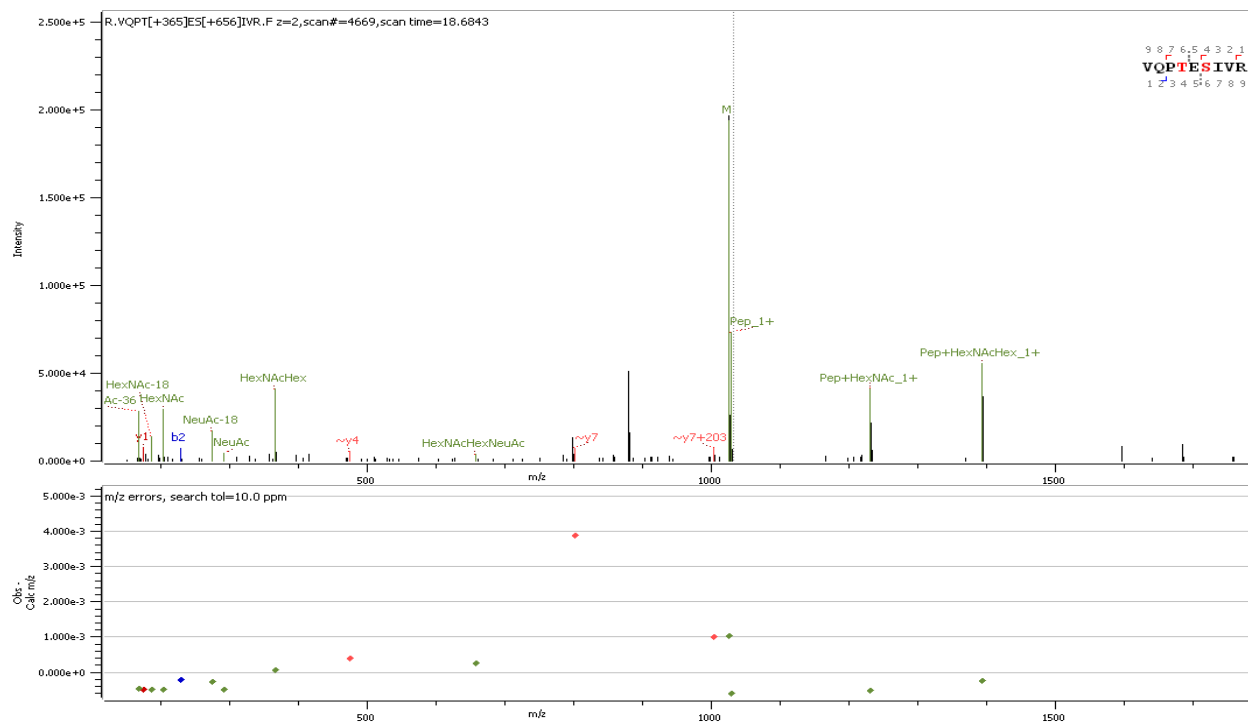
Glycopeptide Analysis:



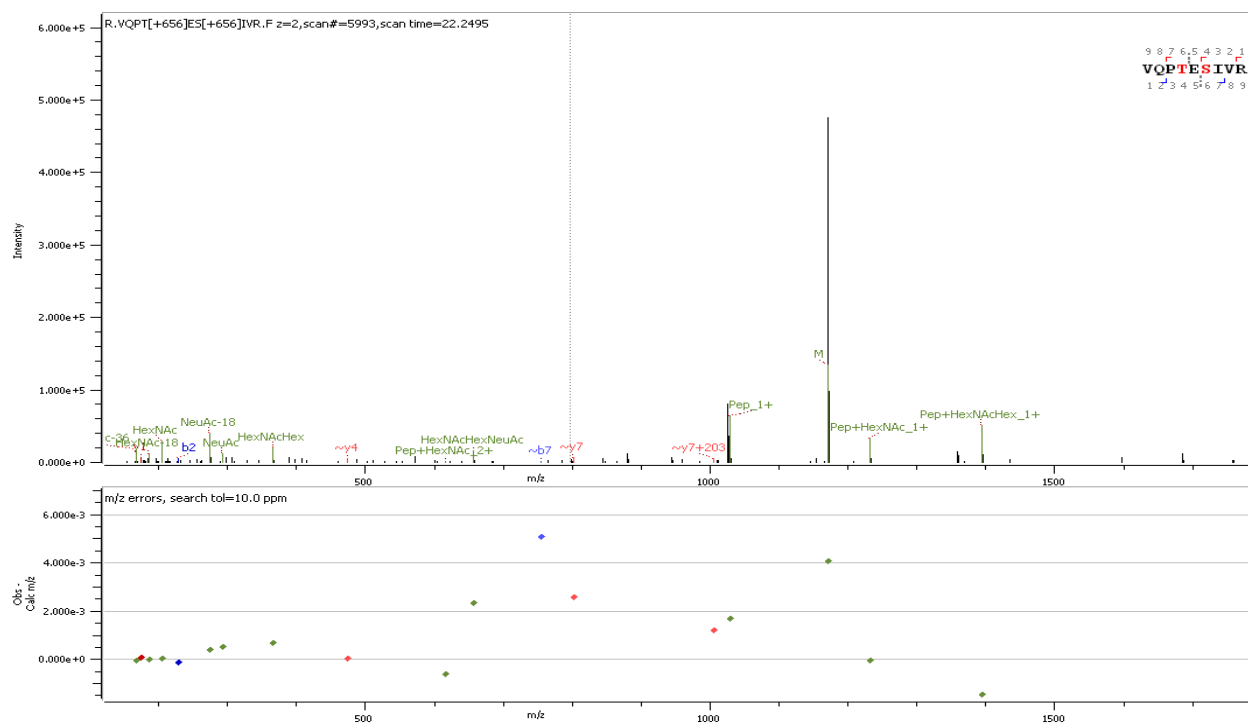
Supp. Figure S1 Spectra of intact O-glycopeptide with assigned O-glycan (GalNAcGal) at T323



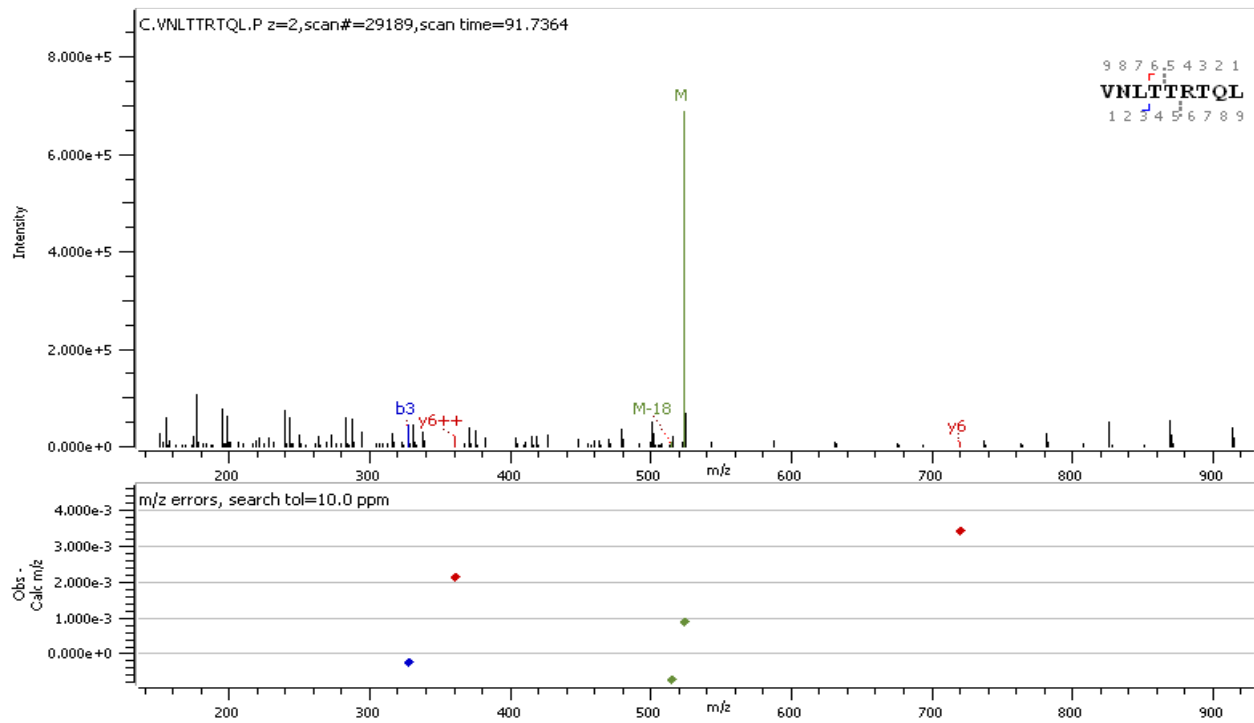
Supp. Figure S2 Spectra of intact O-glycopeptide with assigned O-glycan (GalNAcGal) at T323



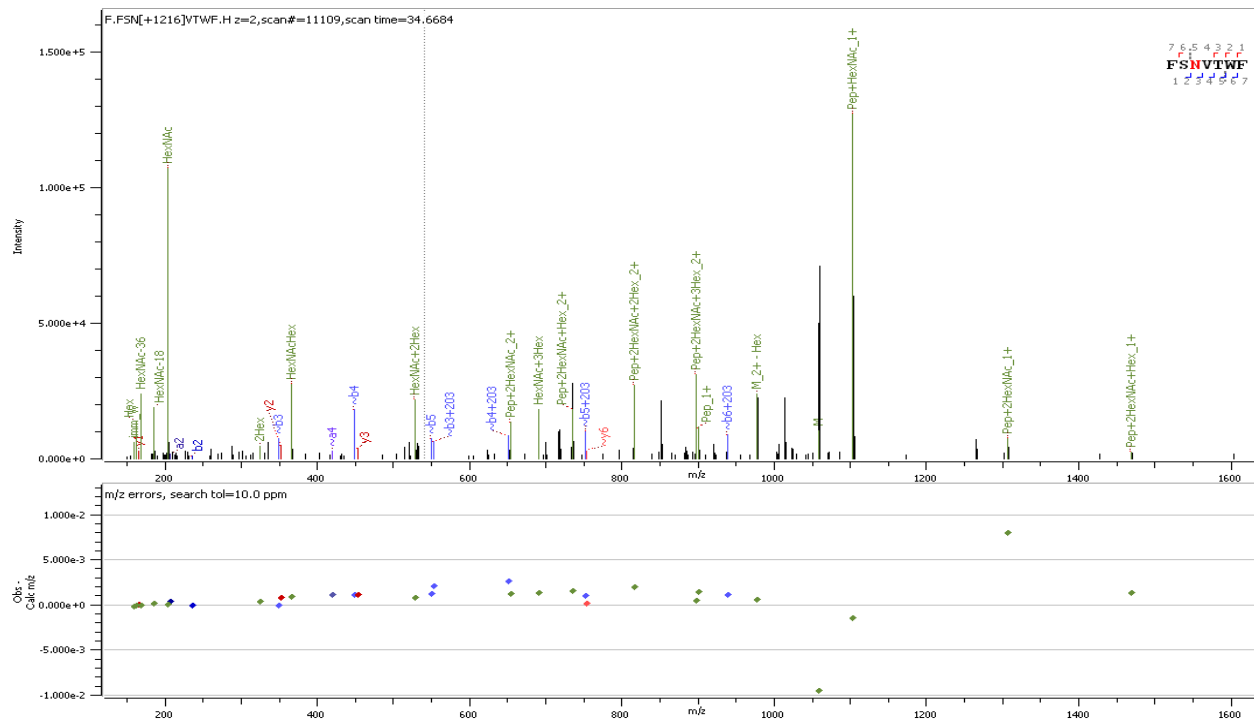
Supp. Figure S3 Spectra of intact O-glycopeptide with assigned O-glycan (GalNAcGal) at T323 & (GalNAcGalNeuAc₁) at S325



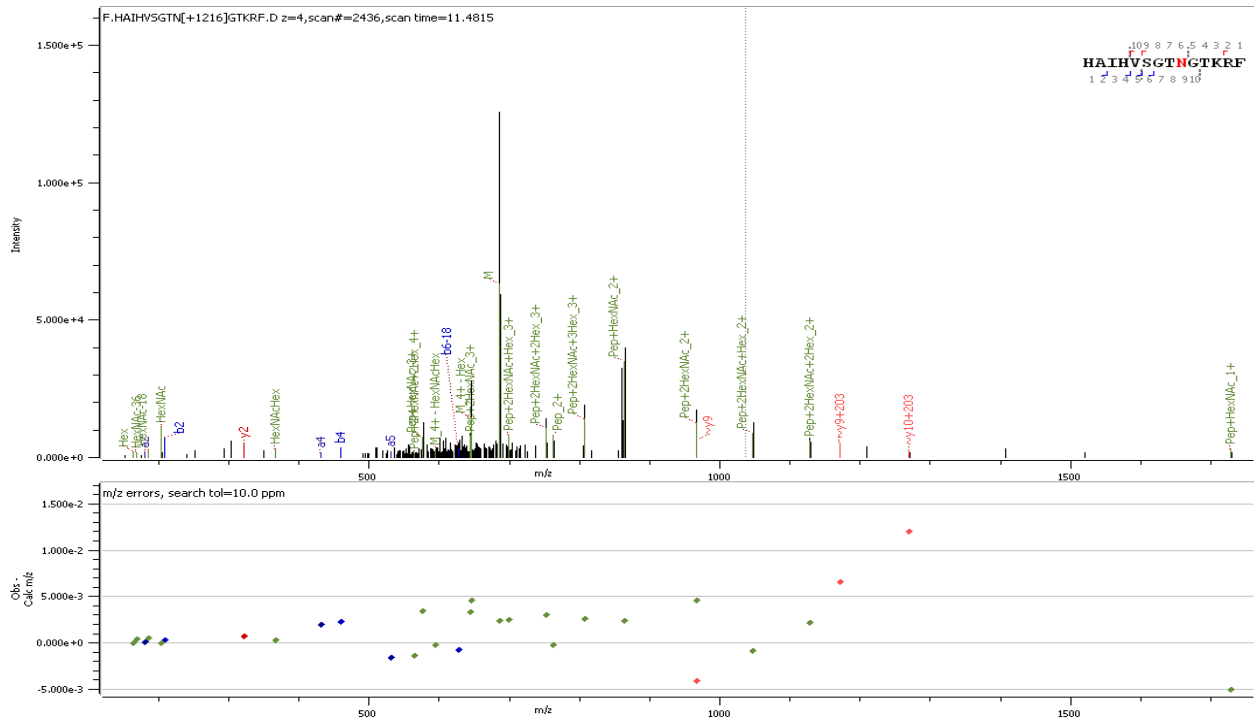
Supp. Figure S4 Spectra of intact O-glycopeptide with assigned O-glycan (GalNAcGalNeuAc₁) at T323 & (GalNAcGalNeuAc₁) at S325



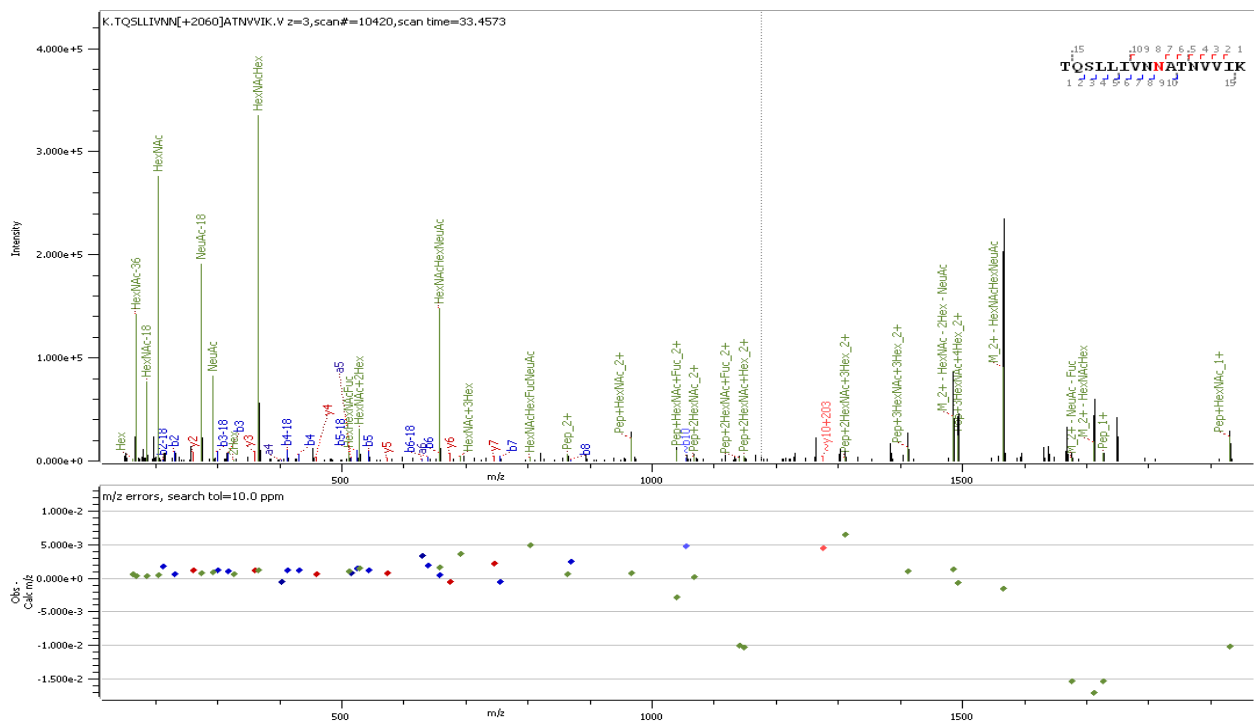
Supp. Figure S5. Spectra of non-glycosylated peptide at N17



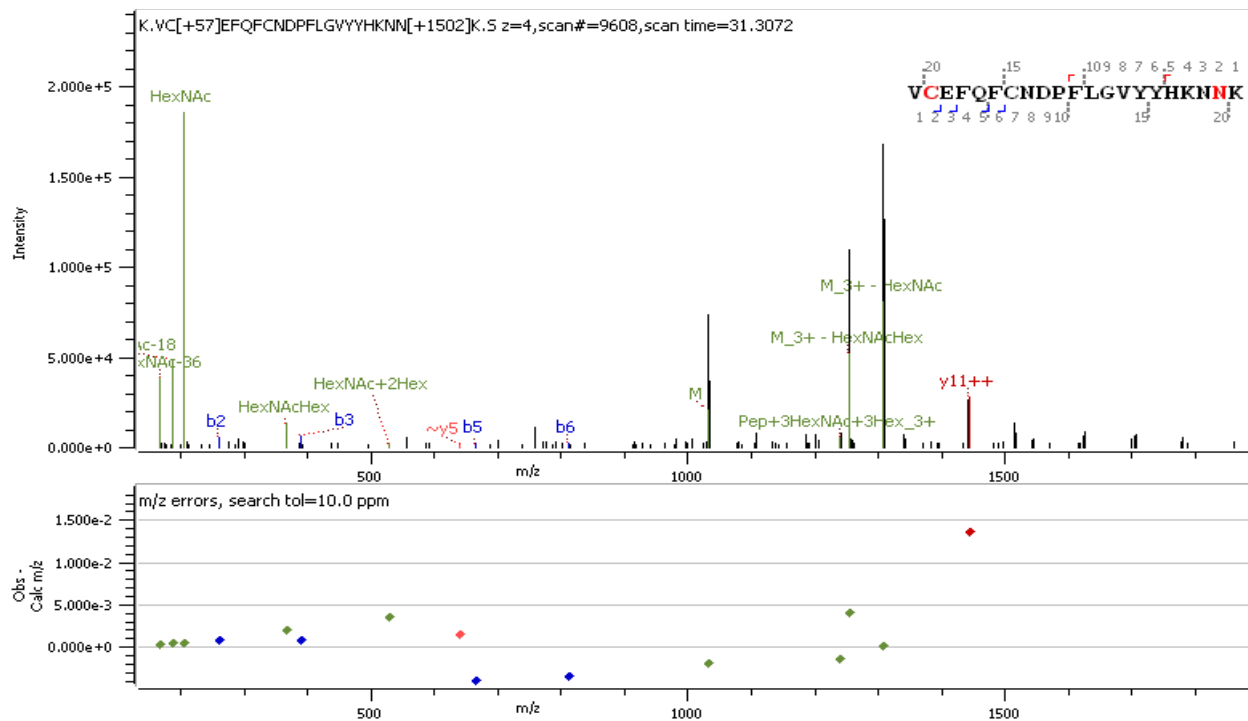
Supp. Figure S6 Spectra of intact N-glycopeptide with assigned N-glycan (GlcNAc₂Man₅) at N61



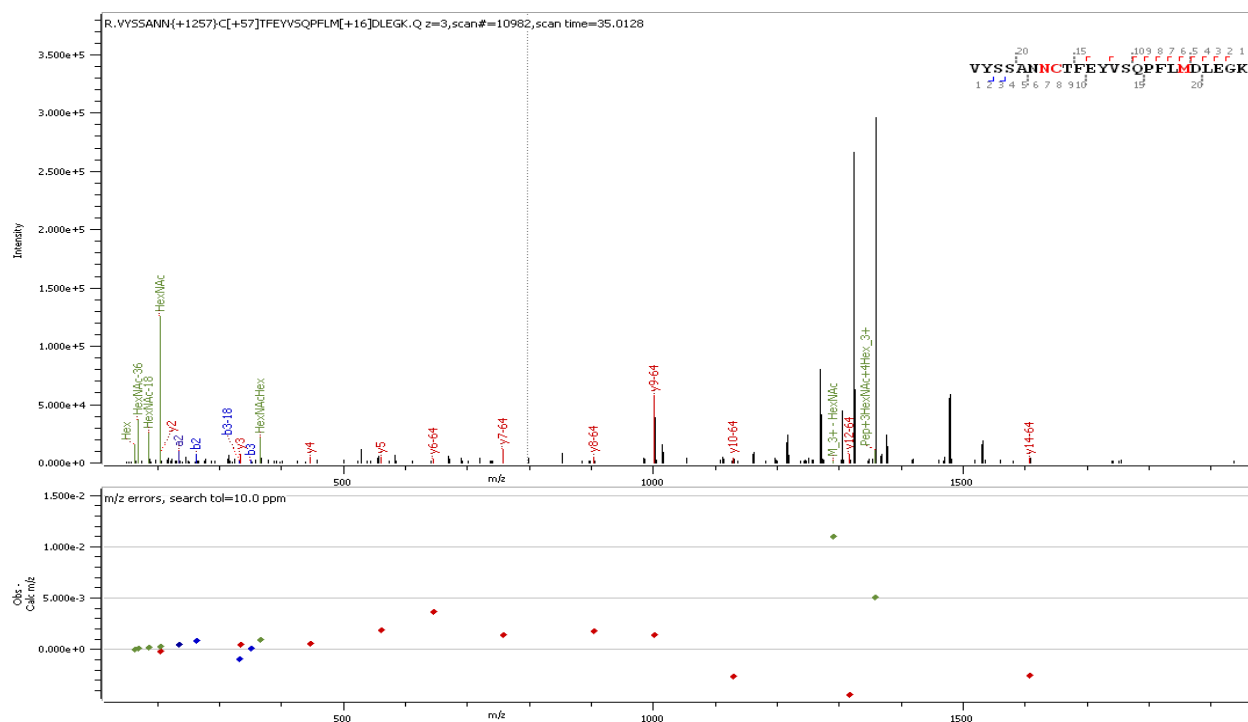
Supp. Figure S7 Spectra of intact N-glycopeptide with assigned N-glycan (GlcNAc₂Man₅) at N74



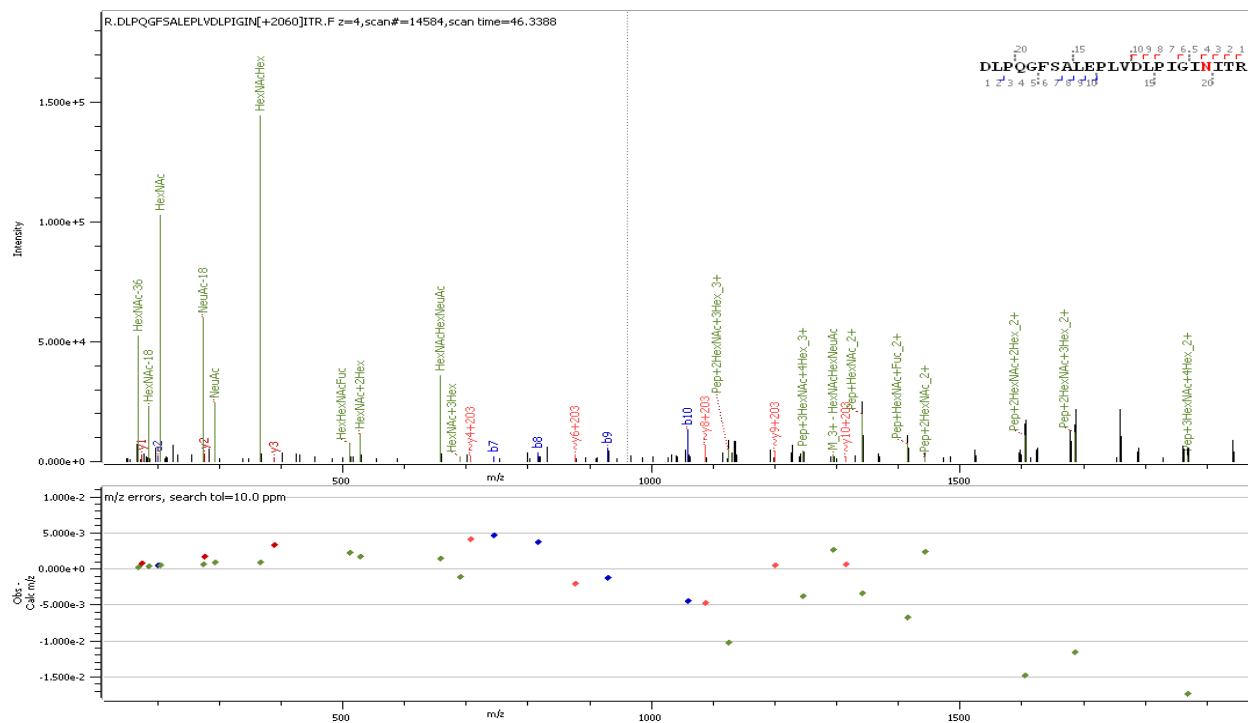
Supp. Figure S8. Spectra of intact N-glycopeptide with assigned N-glycan (GlcNAc₂Fuc₁Man₃GlcNAc₂Gal₁NeuAc₁) at N122



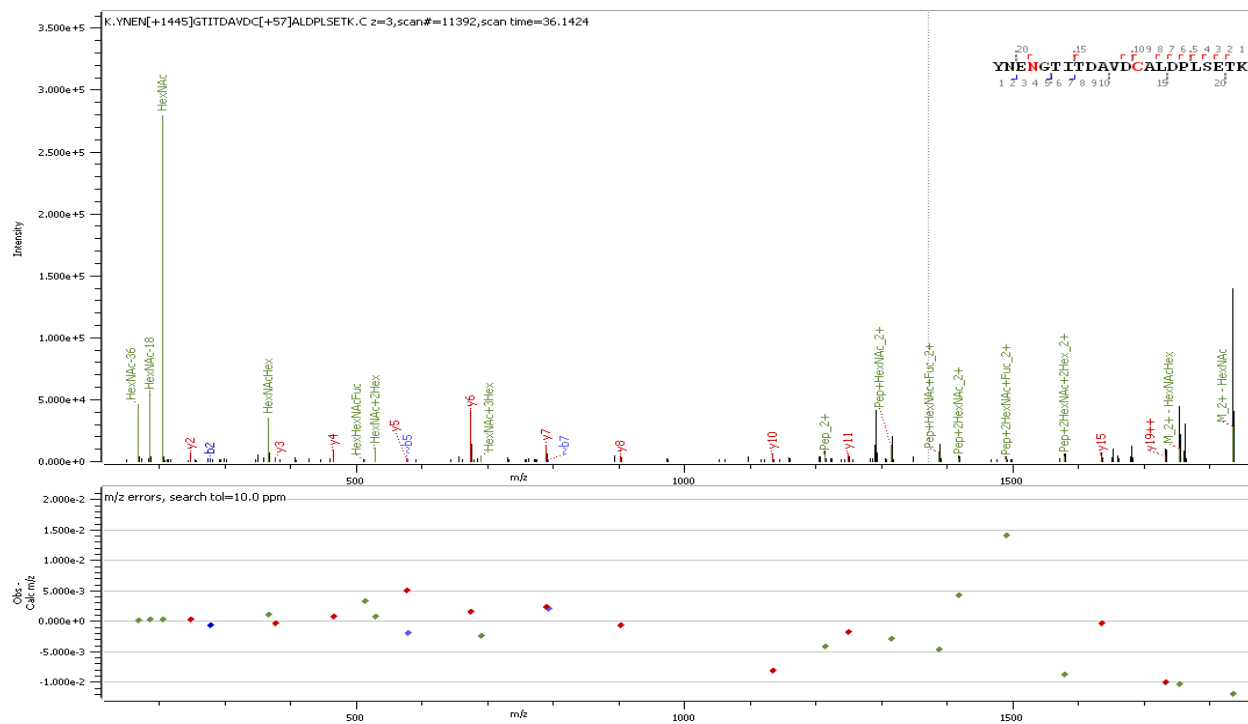
Supp. Figure S9. Spectra of intact N-glycopeptide with assigned N-glycan (GlcNAc₂Man₃GlcNAc₄) at N149



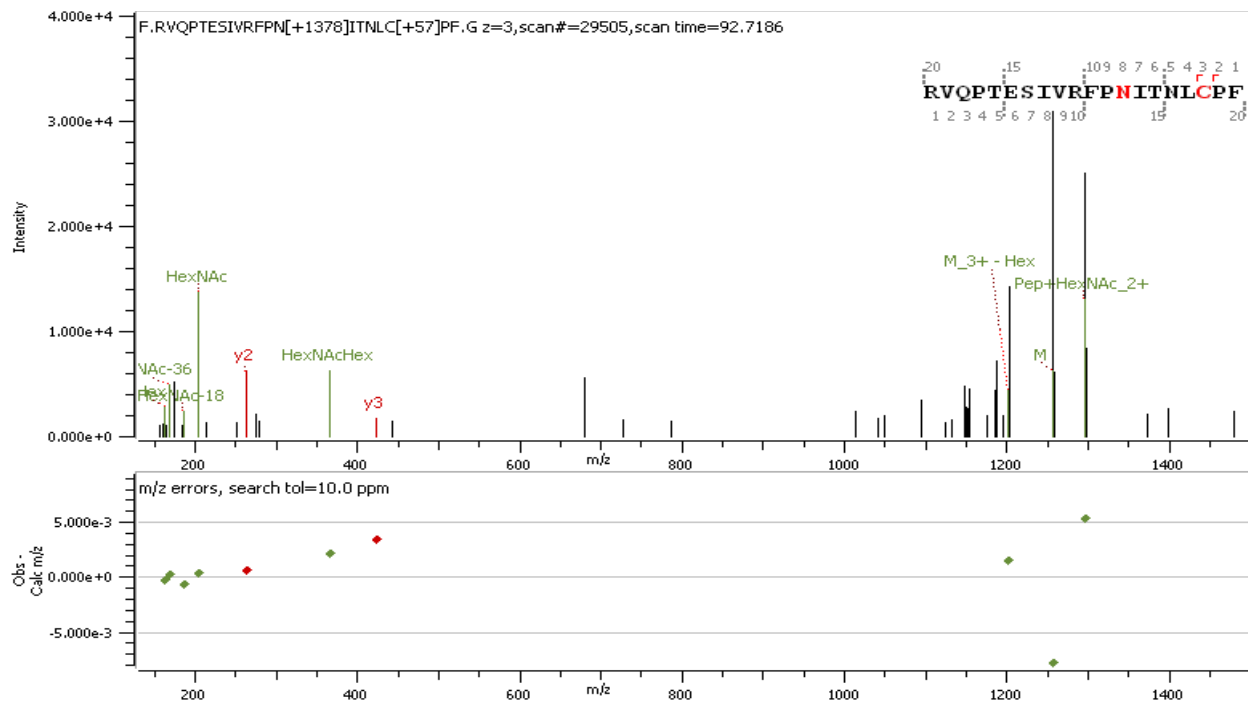
Supp. Figure S10. Spectra of intact N-glycopeptide with assigned N-glycan (GlcNAc₂Man₃GlcNAc₁Gal₁) at N165



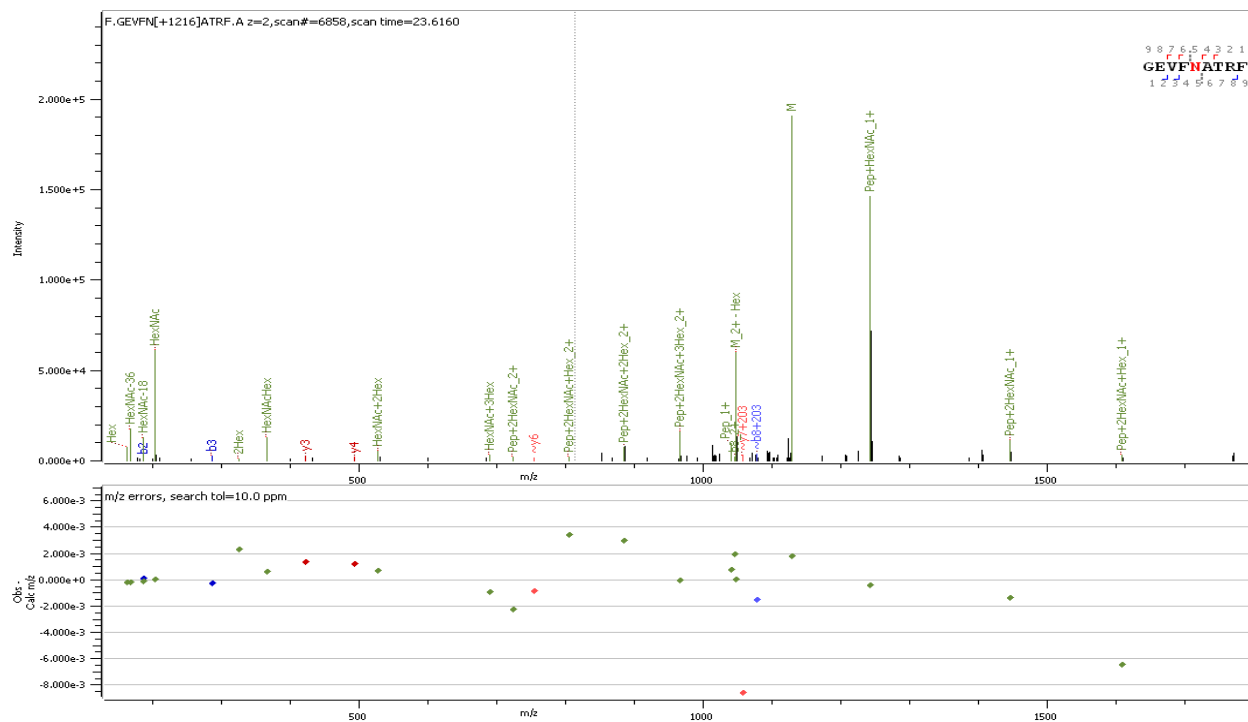
Supp. Figure S1. Spectra of intact N-glycopeptide with assigned N-glycan (GlcNAc₂Fuc₁Man₃GlcNAc₂Gal₂NeuAc₁) at N234



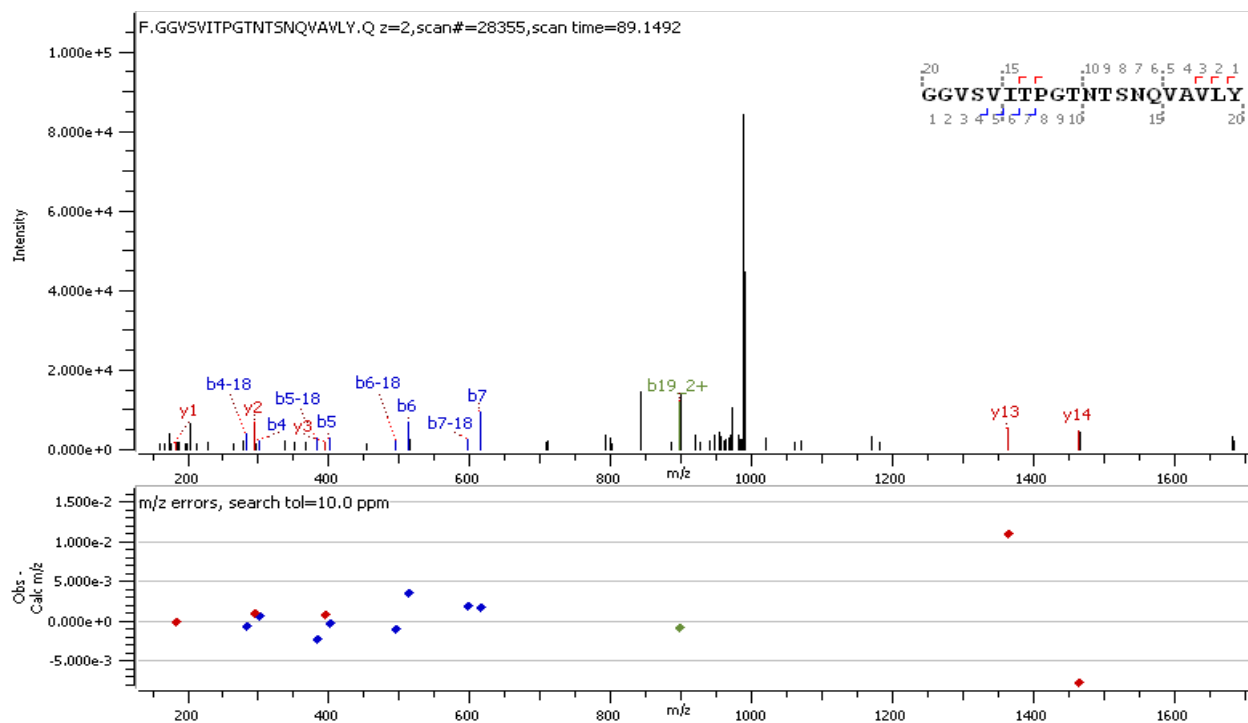
Supp. Figure S12. Spectra of intact N-glycopeptide with assigned N-glycan (GlcNAc₂Fuc₁Man₃GlcNAc₂) at N282



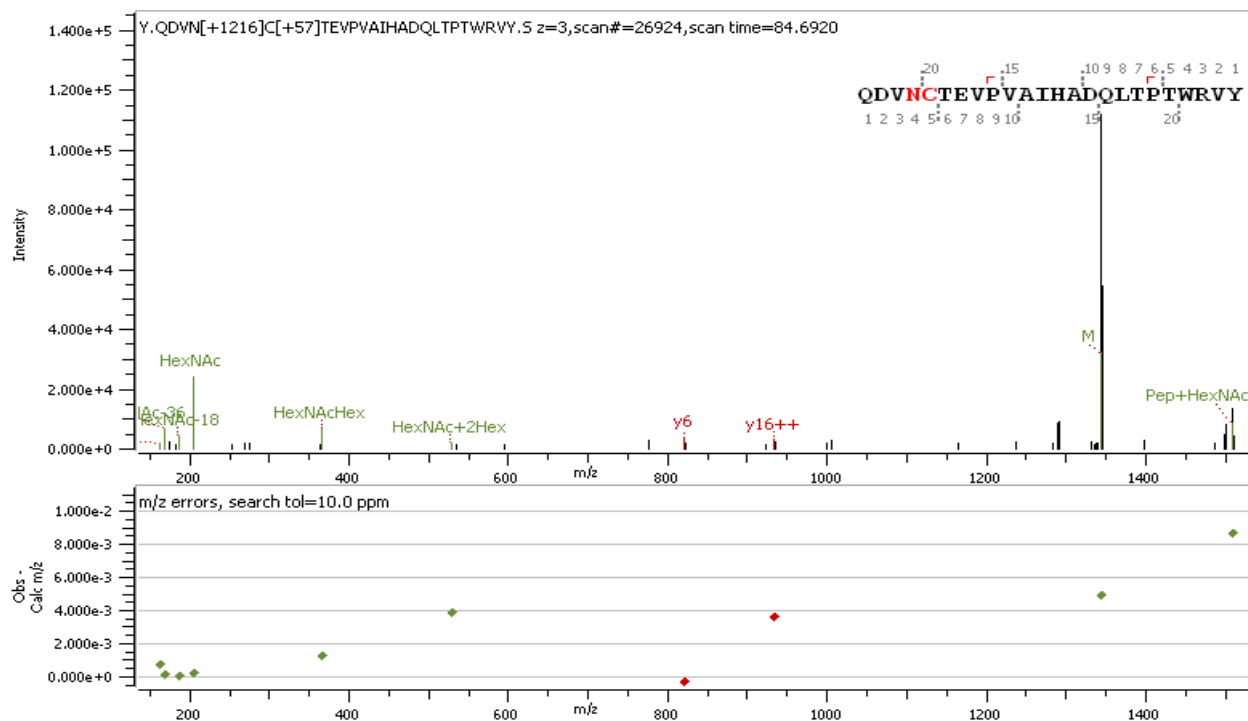
Supp. Figure S13. Spectra of intact N-glycopeptide with assigned N-glycan (GlcNAc₂Man₆) at N331



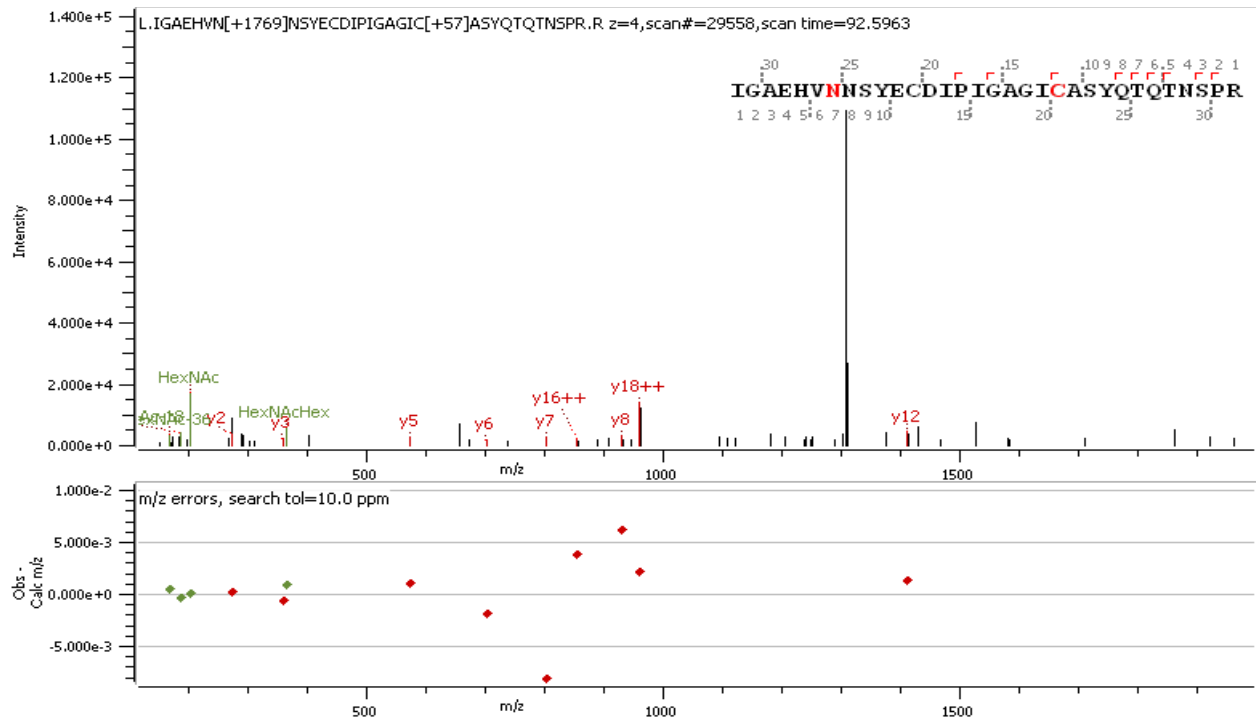
Supp. Figure S14. Spectra of intact N-glycopeptide with assigned N-glycan (GlcNAc₂Man₅) at N343



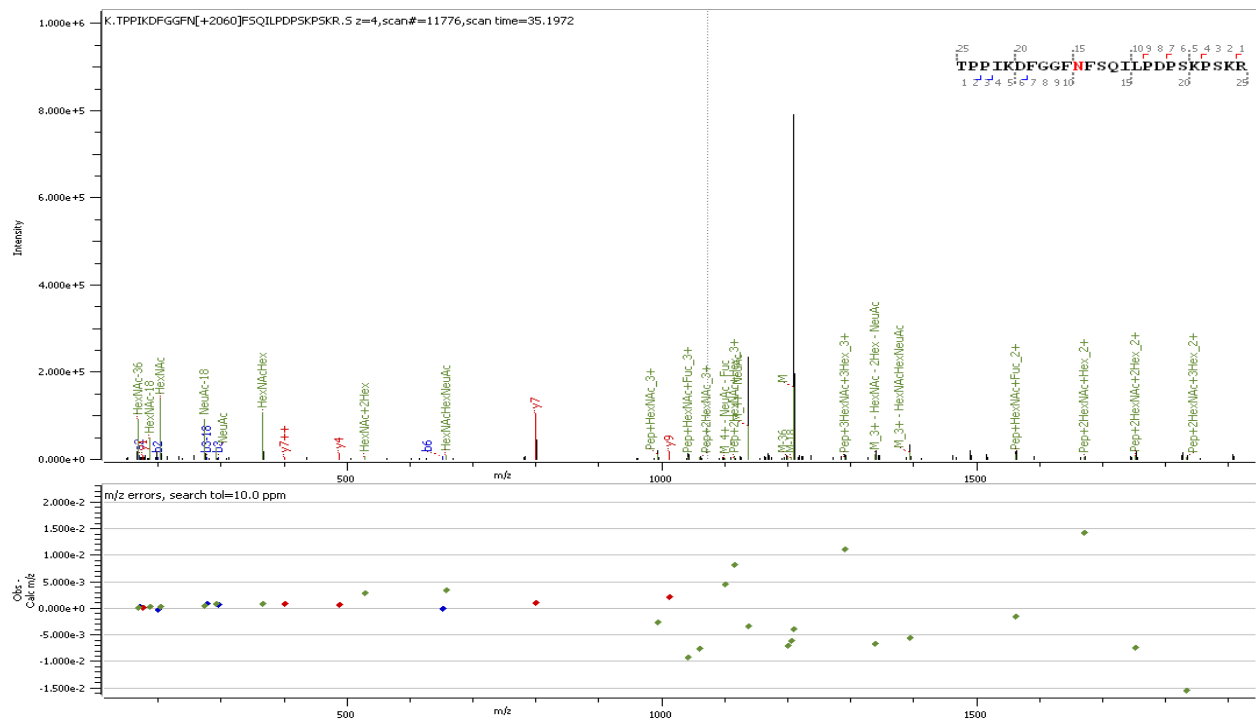
Supp. Figure S15. Spectra of Non-glycosylated peptide at N603



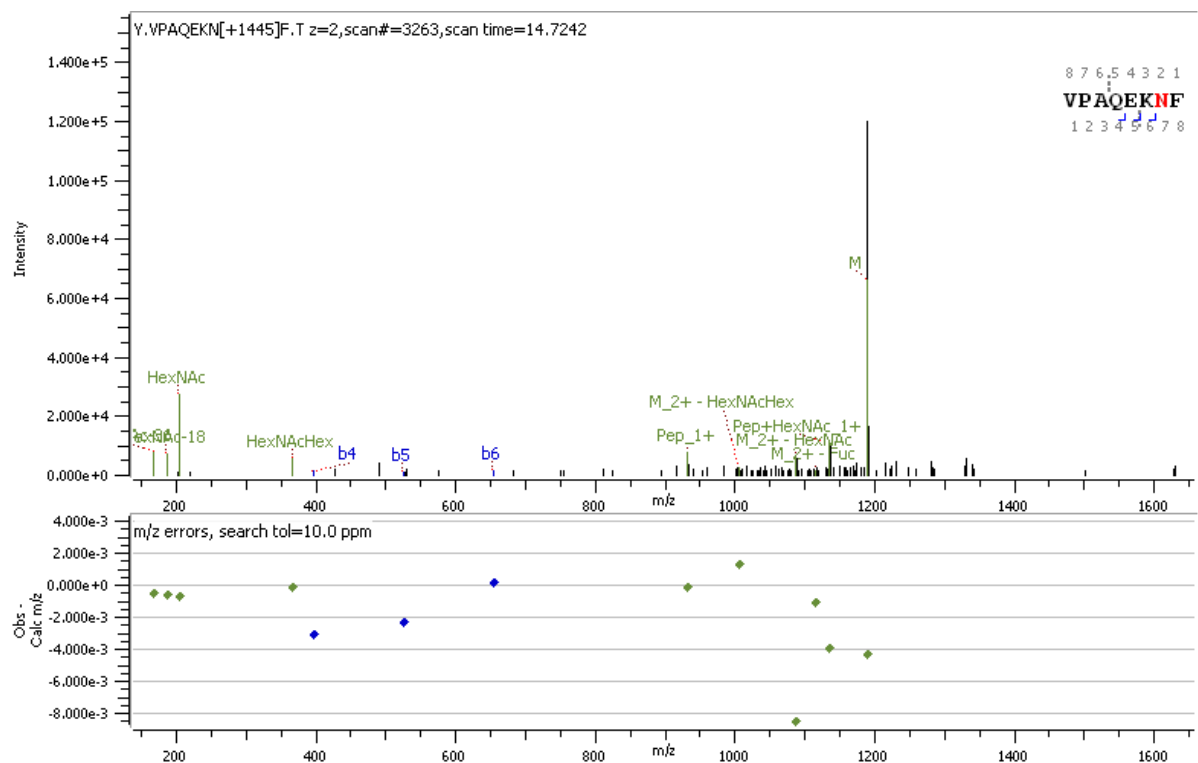
Supp. Figure S16. Spectra of intact N-glycopeptide with assigned N-glycan (GlcNAc₂Man₅) at N616



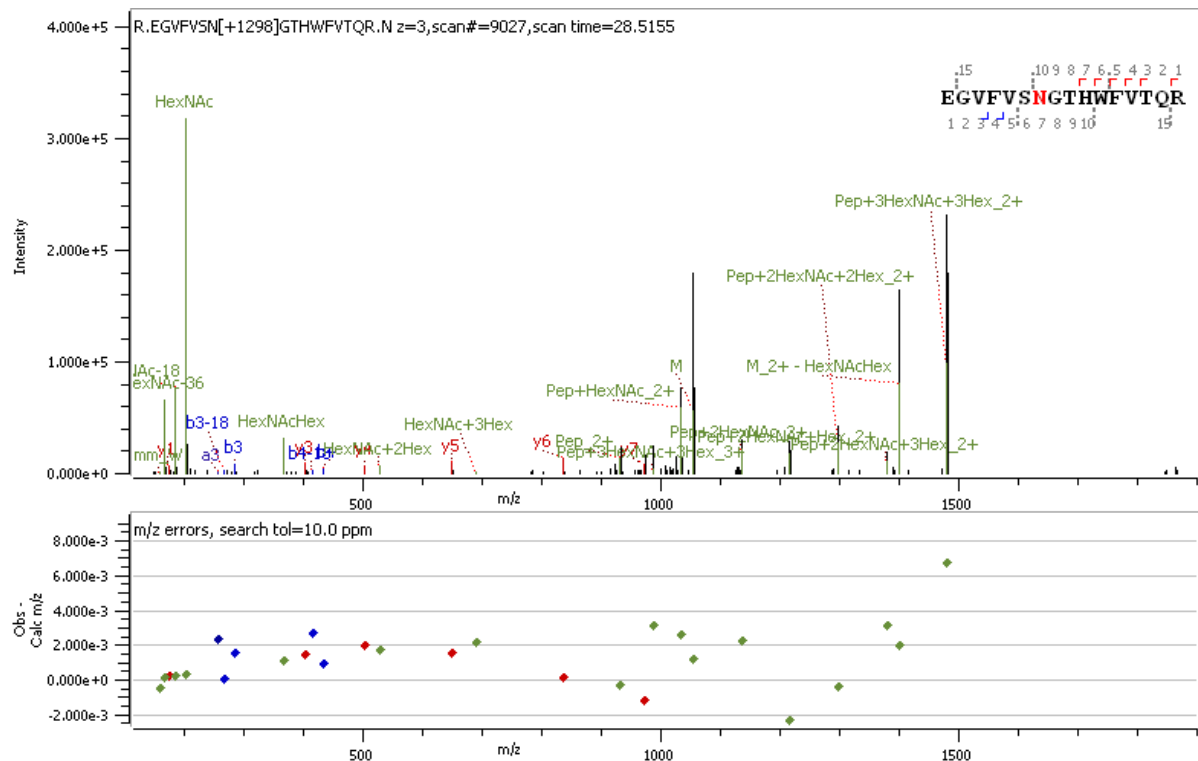
Supp. Figure S17. Spectra of intact N-glycopeptide with assigned N-glycan (GlcNAc₂Fuc₁Man₃GlcNAc₂Gal₂) at N657.



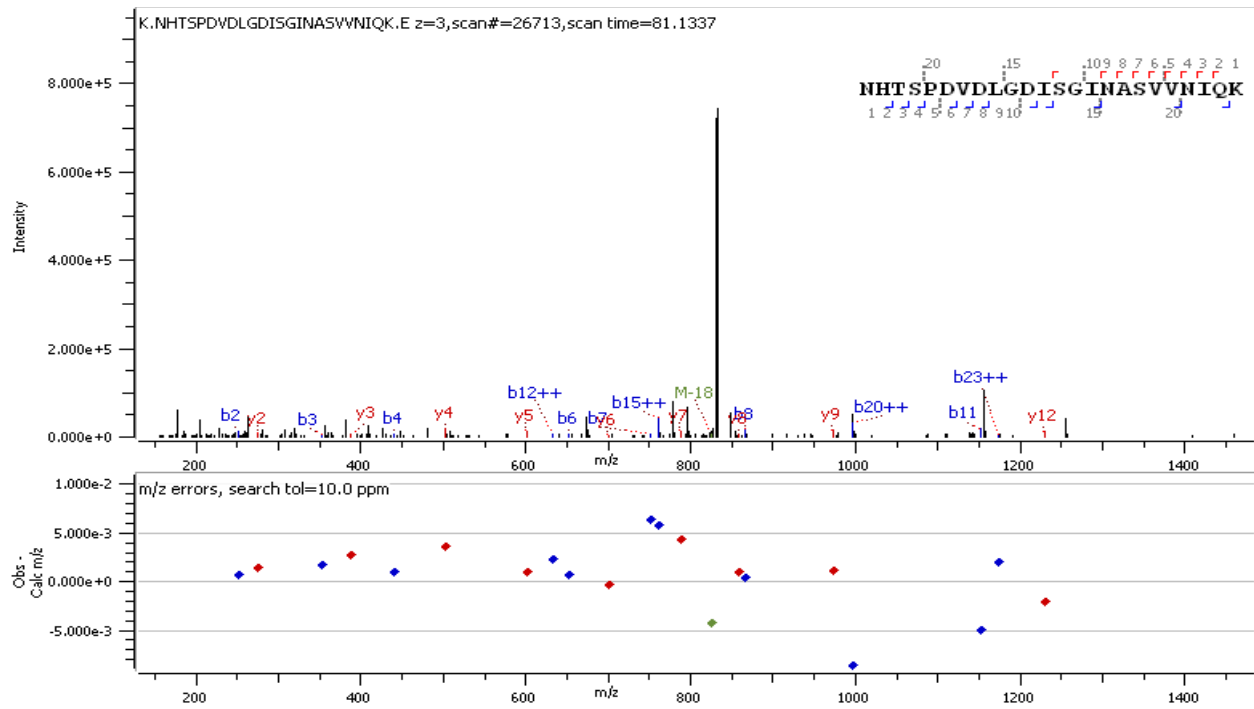
Supp. Figure S18. Spectra of intact N-glycopeptide with assigned N-glycan (GlcNAc₂Fuc₁Man₃GlcNAc₂Gal₂NeuAc₁) at N801



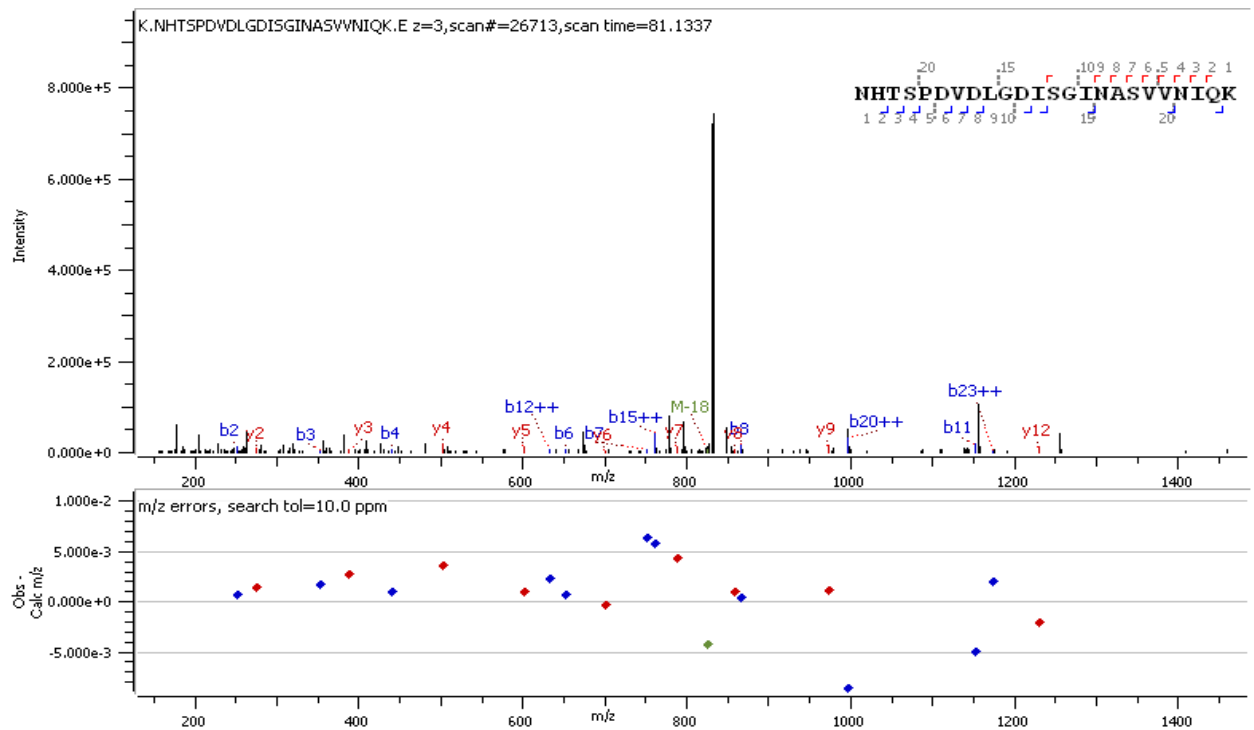
Supp. Figure S19. Spectra of intact N-glycopeptide with assigned N-glycan (GlcNAc₂Fuc₁Man₃GlcNAc₂) at N1074 (peptide found to be 99.3% unglycosylated)



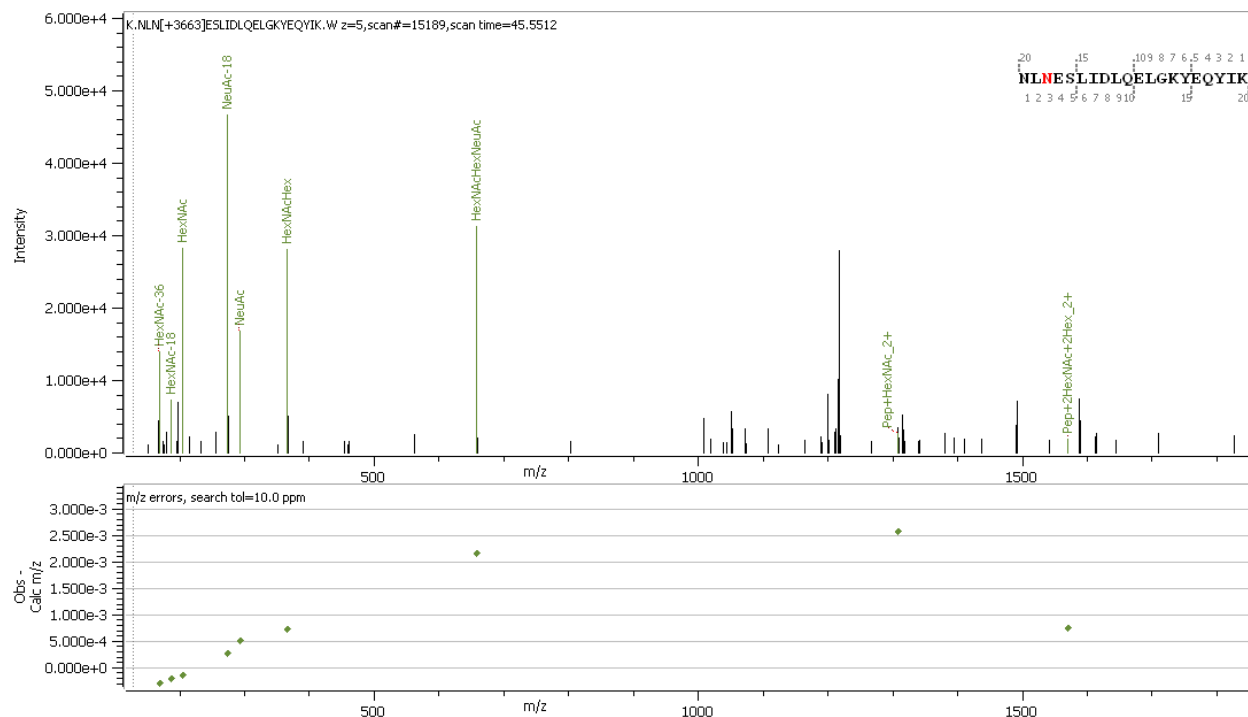
Supp. Figure S20. Spectra of intact N-glycopeptide with assigned N-glycan (GlcNAc₂Fuc₁Man₃GlcNAc₂Gal₂NeuAc₁) at N1098



Supp. Figure S21. Spectra of non-glycosylated peptide at N1158



Supp. Figure S22. Spectra of non-glycosylated peptide at N1173



Supp. Figure S23. Spectra of intact N-glycopeptide with assigned N-glycan (GlcNAc₂FucMan₃GlcNAc₄Gal₄NeuAc₄) at N1194