

Identification of Drugs Blocking SARS-CoV-2 Infection using Human Pluripotent Stem Cell-derived Colonic Organoids

Authors

Xiaohua Duan^{1, 2#}, Yuling Han^{1, #}, Liuliu Yang^{1, #}, Benjamin E. Nilsson-Payant^{3, #}, Pengfei Wang^{4, #}, Tuo Zhang⁵, Jenny Xiang⁵, Dong Xu⁵, Xing Wang⁵, Skyler Uhl³, Yaoxing Huang⁴, Huanhuan Joyce Chen⁶, Hui Wang^{2,7,*}, Benjamin tenOever^{3,*}, Robert E. Schwartz^{8,9,*}, David. D. Ho^{4,*}, Todd Evans^{1,*}, Fong Cheng Pan^{1,*}, Shuibing Chen^{1,*}

Affiliations

¹ Department of Surgery, Weill Cornell Medicine, 1300 York Ave, New York, NY, 10065, USA.

² School of Life Science and Technology, ShanghaiTech University, 201210 Shanghai, China.

³ Department of Microbiology, Icahn School of Medicine at Mount Sinai. 1468 Madison Ave. New York, NY, 10029, USA.

⁴ Aaron Diamond AIDS Research Center, Columbia University Irving Medical Center, New York, NY 10032, USA

⁵ Genomic Resource Core Facility, Weill Cornell Medicine, New York, NY 10065, USA.

⁶ The Pritzker School of Molecular Engineering, the Ben May Department for Cancer Research, the University of Chicago, IL. USA.

⁷ State Key Laboratory of Oncogenes and Related Genes, Center for Single-Cell Omics, School of Public Health, Shanghai Jiao Tong University School of Medicine, Shanghai 200025, China.

⁸Division of Gastroenterology and Hepatology, Department of Medicine, Weill Cornell Medicine, 1300 York Ave, New York, NY, 10065, USA.

⁹Department of Physiology, Biophysics and Systems Biology, Weill Cornell Medicine, 1300 York Ave, New York, NY, 10065, USA.

These authors contributed equally: Xiaohua Duan, Yuling Han, Liuliu Yang, Benjamin Nilsson-Payant, Pengfei Wang

***Corresponding authors**

Correspondence to Dr. Shuibing Chen (lead contact): shc2034@med.cornell.edu

Dr. Fong Cheng Pan: fc2002@med.cornell.edu

Dr. Todd Evans: tre2003@med.cornell.edu

Dr. David D. Ho: dh2994@cumc.columbia.edu

Dr. Robert E. Schwartz: res2025@med.cornell.edu

Dr. Benjamin tenOever: benjamin.tenoever@mssm.edu

Dr. Hui Wang: huiwang@shsmu.edu.cn

Summary Paragraph

The current COVID-19 pandemic is caused by SARS-coronavirus 2 (SARS-CoV-2). There are currently no therapeutic options for mitigating this disease due to lack of a vaccine and limited knowledge of SARS-CoV-2 biology. As a result, there is an urgent need to create new disease models to study SARS-CoV-2 biology and to screen for therapeutics using human disease-relevant tissues. COVID-19 patients typically present with respiratory symptoms including cough, dyspnea, and respiratory distress, but nearly 25% of patients have gastrointestinal indications including anorexia, diarrhea, vomiting, and abdominal pain. Moreover, these symptoms are associated with worse COVID-19 outcomes¹. Here, we report using human pluripotent stem cell-derived colonic organoids (hPSC-COs) to explore the permissiveness of colonic cell types to SARS-CoV-2 infection. Single cell RNA-seq and immunostaining showed that the putative viral entry receptor ACE2 is expressed in multiple hESC-derived colonic cell types, but highly enriched in enterocytes. Multiple cell types in the COs can be infected by a SARS-CoV-2 pseudo-entry virus, which was further validated *in vivo* using a humanized mouse model. We used hPSC-derived COs in a high throughput platform to screen 1280 FDA-approved drugs against viral infection. Mycophenolic acid and quinacrine dihydrochloride were found to block the infection of SARS-CoV-2 pseudo-entry virus in COs both *in vitro* and *in vivo*, and confirmed to block infection of SARS-CoV-2 virus. This study established both *in vitro* and *in vivo* organoid models to investigate infection of SARS-CoV-2 disease-relevant human colonic cell types and identified drugs that blocks SARS-CoV-2 infection, suitable for rapid clinical testing.

Previously, we reported a chemically-defined protocol to derive COs from hPSCs², which we modified slightly based on published studies³. In brief, HUES8 hESCs were induced with CHIR99021 (CHIR) and Activin A to generate definitive endoderm (DE) (**Extended Data Fig. 1a**). After 4 days of culture with CHIR +FGF4 to induce hindgut endoderm (HE), cells were treated with BMP2, epidermal growth factor (EGF), and CHIR for 3 days to promote specification of colon progenitors (CPs). Starting on day 11, CPs were treated with a colonic medium containing CHIR, LDN193189 (LDN), and EGF. After embedding these organoids in Matrigel, spheroids became pseudostratified and progressively cavitated into fully convoluted organoids (**Fig. 1a**). The organoids expressed CDX2, Villin and SATB2, confirming colonic identity (**Fig. 1b**). Immunocytochemistry confirmed that COs contain cell types found in normal colon, including keratin 20 (KRT20)⁺ epithelial cells, mucin 2 (MUC2)⁺ goblet cells, EPH receptor B2 (EPHB2)⁺ transit-amplifying (TA) cells, and chromogranin A (CHGA)⁺ neuroendocrine (NE) cells (**Fig. 1c**).

Single cell RNA-seq was used to examine global transcript profiles at single cell resolution (**Extended Data Fig. 1b**). Consistent with the immunostaining results, most cells express *CDX2* and *VIL1* (**Extended Data Fig. 1c**). Five cell clusters were identified including *KRT20*⁺ epithelial cells, *MUC2*⁺ goblet cells, *EPHB2*⁺ TA cells, *CHGA*⁺ NE cells, and *LGR5*⁺ or *BMI1*⁺ stem cells (**Fig. 1d-e, Extended Data Fig. 1d**). We examined the expression of two factors associated with SARS-CoV-2 cell entry, the putative receptor *ACE2* and the protease *TMPRSS2*⁴. Both are expressed in all five cell clusters, but highly enriched in *KRT20*⁺ enterocytes (**Fig. 1f-g**). Two-dimensional

correlation confirmed the co-expression relationship for *ACE2* and *KRT20*, as well as *ACE2* and *TMPRSS2* (**Fig. 1h**). Immunohistochemistry further validated the co-expression of *KRT20* and *ACE2* in hPSC-COs (**Fig. 1i**).

To model infection of hPSC-COs with SARS-CoV-2, we used a vesicular stomatitis virus (VSV) based SARS-CoV-2 pseudo-entry virus, with the backbone provided by a VSV-G pseudo-typed Δ G-luciferase virus and the SARS-CoV-2 spike protein incorporated into the surface of the viral particle (See Methods for details)^{5,6}. COs were fragmented and inoculated with the SARS-CoV-2 pseudo-entry virus. 24 or 48 hr post-infection (hpi), the cells were lysed and monitored for luciferase activity (**Extended Data Fig. 2a**). The organoids infected with SARS-CoV-2 pseudo-entry virus at MOI=0.01 showed a strong signal at 24 hpi (**Fig. 2a**). Single cell RNA-seq was performed to examine the hPSC-derived COs at 24 hpi. The same five cell populations were identified in the COs post-infection (**Fig. 2b and Extended Data Fig. 2b-d**). Compared to uninfected samples, the *KRT20*⁺ enterocyte population decreased significantly (**Fig. 2c**). Immunostaining confirmed increased cellular apoptosis, suggesting toxicity for these cells (**Extended Data Fig. 2e**). In addition, the *ACE2*⁺ population was significantly depleted (**Fig. 2e**). The mRNAs of SARS-CoV-2 pseudo-entry virus, including *VSV-NS*, *VSV-N*, and *VSV-M*, were detected in all five cell populations (**Fig. 2f**), but not in the uninfected COs (**Extended Data Fig. 2f**). Immunostaining further validated the expression of luciferase in *ACE2*⁺, *VIL1*⁺, *CDX2*⁺, *KRT20*⁺, and *MUC2*⁺ cells (**Fig. 2g**).

Humanized mice carrying hPSC-COs *in vivo* provide a unique platform for modeling COVID-19. In brief, hPSC-COs were transplanted under the kidney capsule of *NOD-scid IL2Rg^{null}* mice. Two weeks after transplantation, the organoid xenograft was removed and examined for cellular identities (**Fig. 2h**). Consistent with *in vitro* culture, ACE2 can be detected in hPSC-derived KRT20⁺ enterocytes (**Fig. 2i**). SARS-CoV-2 pseudo-entry virus was inoculated locally. At 24 hpi, the xenografts were removed and analyzed by immuno-histochemistry. Luciferase was detected in the xenografts inoculated with virus, but not in MOCK-infected controls (**Fig. 2j**). Immunohistochemistry detected luciferase in ACE2⁺ and Villin⁺ cells, suggesting these are permissive to SARS-CoV-2 pseudo-entry virus infection *in vivo* (**Fig. 2k**).

Next, we adapted hPSC-COs to a high throughput screening platform and probed the Prestwick FDA-approved drug library to identify drug candidates capable of blocking SARS-CoV-2 pseudo-virus infection. In brief, hPSC-COs were cultured in 384-well plates. After overnight incubation, organoids were treated with drugs from the library at 10 μ M. One hour post-exposure with drugs, the organoids were inoculated with the SARS-CoV-2 pseudo-entry virus. 24 hpi, the organoids were analyzed for luciferase activity (**Fig. 3a**). Drugs that decreased the luciferase activity by at least 75% were chosen as primary hit drugs (**Fig. 3b**). Eight drugs (**Extended Data Table 1**) were identified as lead hits and further tested for their capacities to decrease the luciferase signal in a dose-dependent manner (**Extended Data Fig. 3**). These drugs could potentially function through blocking virus entry, by decreased cell survival, or even by directly inhibiting luciferase activity. To distinguish these possibilities, the lead hit drugs

were tested in comparison to hPSC-COs infected with a control VSVG-luciferase reporter virus. Four of the lead hit drugs showed specificity to SARS-CoV-2 pseudo-entry virus, including mycophenolic acid (MPA, **Fig. 3c**) (SARS-CoV-2: $IC_{50}=0.54 \mu\text{M}$; VSVG: $IC_{50}=6.4 \mu\text{M}$), quinacrine dihydrochloride (QNHC, **Fig. 3d**) (SARS-CoV-2: $IC_{50}=1.6 \mu\text{M}$; VSVG: $IC_{50}=5.5 \mu\text{M}$), chloroquine (SARS-CoV-2: $IC_{50}=6.8 \mu\text{M}$; VSVG: $IC_{50}=19.1 \mu\text{M}$), and resveratrol (SARS-CoV-2: $IC_{50}=5.7 \mu\text{M}$; VSVG: $IC_{50}=39.3 \mu\text{M}$) (**Fig. 3e-g**, and **Extended Data Fig. 3**). The IC_{50} of MPA is 10 times lower and the IC_{50} of QNHC is 5 times lower than that of chloroquine, a drug recently authorized by the FDA for emergency use to treat COVID-19 patients⁷. Immunostaining confirmed few luciferase positive cells in hPSC-COs treated with $3 \mu\text{M}$ MPA or $4.5 \mu\text{M}$ QNHC at 24 hpi (**Fig. 3h**). CO-explanted humanized mice were treated with 50 mg/kg MPA by IP injection, followed by local inoculation of SARS-CoV-2 pseudo-entry virus. At 24 hpi, the mice were euthanized, and xenografts were analyzed by immunostaining. Luc^+ cells in the xenografts of MPA-treated mice were significantly lower than those of vehicle-treated mice (**Fig. 3i-k**).

Finally, hPSC-COs were infected with SARS-CoV-2 virus at $MOI=0.1$ or 0.01 . At 24 hpi, immunostaining detected the expression of SARS-CoV membrane protein in the infected hPSC-COs, which partially co-localized with CDX2 and KRT20 (**Fig. 4a**). Bulk RNA sequencing confirmed viral transcripts in the SARS-CoV-2 infected hPSC-COs ($MOI=0.1$, **Fig. 4b**). The MOCK and infected hPSC-COs separated clearly into two distinct clusters in a PCA plot (**Fig. 4c**). Differential gene expression analysis showed striking induction of chemokine gene expression, including for *IL1A*, *CXCL8*, *CXCL6*,

CXCL11, and *IL1B*, yet with no detectable levels of *IFN-I* or *IFN-III*, which is consistent with recent reports⁸⁻¹⁰ (**Fig. 4d**). Ingenuity Pathway Analysis of the differential gene expression list highlighted the production of nitric oxide and reactive oxygen species, oxidative phosphorylation, as well as IL-15 production (**Fig. 4e**). The hPSC-COs were pre-treated with MPA or QNHC and infected with a relatively high titer of SARS-CoV-2 virus (MOI=0.1). Immunostaining confirmed the decrease of SARS-CoV-2⁺ cells in MPA or QNHC-treated hPSC-COs (**Fig. 4f**). Finally, western blotting assays confirmed the ability of MPA and QNHC to block SARS-CoV-2 infection of Vero cells (**Extended Data Fig. 4**).

In summary, we report that hPSC-derived COs express ACE2 and TMPRS2S2 and are permissive to SARS-CoV-2 infection. There is currently a lack of physiologically relevant models for COVID-19 disease that enable drug screens. Previous studies were based on clinical data or transgenic animals, for example mice that express human ACE2. However, such transgenic animals fail to fully recapitulate the cellular phenotype and host response of human cells^{11,12}. We adapted a hPSC-derived CO platform for high throughput drug screening. Using disease-relevant normal colonic human cells, we screened 1280 FDA-approved compounds and identified MPA and QNHC, two drugs that can block the entry of SARS-CoV-2 into human cells. Strikingly, in this assay, the efficacies of MPA and QNHC for blocking viral entry are more than 5 times higher than chloroquine, a drug recently authorized by the FDA for emergency use to treat COVID-19 patients. Moreover, the MPA concentrations effective in blocking viral entry and replication are below that which is routinely used in clinical therapy¹³. MPA is a

reversible, non-competitive inhibitor of inosine-5'-monophosphate dehydrogenase and is used widely and safely as an immunosuppressive drug (mycophenolate mofetil; CellCept) to prevent organ rejection after transplantation and for the treatment of autoimmune diseases¹⁴. MPA has been reported to block replication of human immunodeficiency virus¹⁵, dengue¹⁶, as well as Middle East respiratory syndrome coronavirus (MERS-CoV)¹⁷. Several studies on MERS-CoV suggest that MPA may noncompetitively inhibit the viral papain-like protease while also altering host interferon response^{17,18}. A recent study also predicts MPA would modulate the interaction between host protein inosine-5'-monophosphate dehydrogenase 2 (IMPDH2) and SARS-CoV-2 protein nonstructural protein 14 (nsp14)¹⁹. Furthermore, a clinical study of MERS-CoV suggested that the patients treated with mycophenolate mofetil has 0% mortality rate, which is significantly lower than the overall mortality rate as 37%²⁰. QNHC (Acriquine[®], Atabrine[®], Atebrin[®], Mepacrine[®]) is an FDA-approved antimalarial drug used more recently as an anthelmintic, antiprotozoal, antineoplastic agent, and antirheumatic²¹. Recent studies have shown that quinacrine protects mice against Ebola virus infection *in vivo*²². Both MPA and QNHC can be considered candidates for clinical trials of COVID-19 therapy.

Figure Legends

Figure 1. ACE2 and TMPRSS2 are expressed in hPSC-COs. **a**, Phase contrast image of a representative hPSC-derived colon organoid (CO). Scale bar = 100 μm . **b, c**, Confocal imaging of hPSC-COs stained with antibodies against (b) markers for colon cell fate, including Villin, SATB2, CDX2, or (c) KRT20, MUC2, EPHB2, and CHGA; DAPI stains nuclei. Scale bar = 100 μm . **d**, UMAP of hPSC-CO cell types. **e**, UMAP of markers for specific colonic cell fates markers, including *KRT20*, *MUC2*, *CHGA*, *EPHB2*, *LGR5*, and *BMI1*. **f**, UMAP of *ACE2* and *TMPRSS2*. **g**, Jitter plots for expression levels of *ACE2* and *TMPRSS2*. **h**, 2D correlation of expression levels for *KRT20* and *ACE2*; *ACE2* and *TMPRSS2*. **i**, Representative confocal images of hPSC-COs co-stained with antibodies recognizing *ACE2* and *KRT20*. DAPI stains nuclei. Scale bar = 100 μm .

Figure 2. hPSC-COs can be infected by a SARS-CoV-2 pseudo-entry virus both *in vitro* and *in vivo*. **a**, Luciferase activity in lysates from hPSC-derived colonic cells at 24 hpi following exposure to SARS-CoV-2 pseudo-entry virus at MOI=0.01. **b**, UMAP of hPSC-COs at 24 hpi with SARS-CoV-2 pseudo-entry virus. **c**, UMAP of markers for specific colonic cell fates, including *KRT20*, *MUC2*, *CHGA*, *EPHB2*, *LGR5*, and *BMI1*. **d**, UMAP of *ACE2* and *TMPRSS2*. **e**, Jitter plots of *ACE2* and *TMPRSS2* transcript levels. **f**, Jitter plots of *VSV-M*, *VSV-N* and *VSV-NS* transcript levels. **g**, Immunocytochemistry staining of hPSC-CO cells infected with SARS-CoV-2 pseudo-entry virus (MOI=0.01) at 24 hpi using antibodies against luciferase and specific markers for colonic cell fate, including Villin, CDX2, KRT20, MUC2, CHGA, and ACE2. Scale bar= 50 μm . **h**, Schematic for the *in vivo* infection. **i**, Representative confocal image of a hPSC-CO xenograft at 24 hpi stained with antibodies against ACE2 and KRT20. DAPI stains nuclei. Scale bar = 25 μm . **j**, Representative confocal image of a hPSC-CO xenograft at 24 hpi (1×10^3 FFU) stained with antibody against luciferase. DAPI stains nuclei. Scale bar = 75 μm . **k**, Representative confocal images of hPSC-CO xenografts at 24 hpi stained with antibodies against luciferase, ACE2 and Villin. DAPI stains nuclei. Scale bar = 50 μm . Data in (a) is presented as mean \pm STDEV. $N=3$. P values were calculated by unpaired two-tailed Student's t-test. *** $P < 0.001$.

Figure 3. A high throughput screen to identify drugs that block SARS-CoV-2 entry.

a, Schematic describing the high throughput drug screen platform. **b**, Primary screen data. **c**, **d**, Chemical structure of mycophenolic acid (MPA, **c**) and quinacrine dihydrochloride (QNHC, **d**). **e-g**, Inhibition curves for MPA (**e**), QNHC (**f**) and chloroquine (**g**) comparing hPSC-COs infected with SARS-CoV-2 pseudo-entry or control VSVG viruses (for both, MOI= 0.01). **h**, Immunofluorescent staining for luciferase in 3 μ M MPA, 4.5 μ M QNHC or DMSO-treated hPSC-COs at 24 hpi (MOI=0.01). Scale bar = 100 μ m. **i**. Scheme of the *in vivo* drug evaluation. **j**, Representative confocal images of MPA or DMSO-treated hPSC-CO xenografts at 24 hpi stained with antibodies against luciferase, ACE2 and Villin. DAPI stains nuclei. Scale bar = 50 μ m. **k**. Quantification of the average number of Luc⁺ cells per xenograft. ($N=6$ xenografts, 5 slides/xenografts).

Figure 4. Quinacrine dihydrochloride and mycophenolic acid block the infection of SARS-CoV-2 virus. **a**, Immunofluorescent staining to detect SARS-CoV-2-nucleocapsid protein (SARS-N) in COs co-stained for CDX2 or KRT20. DAPI stains nuclei. Scale bar = 100 μ m. **b**, Alignment of the transcriptome with the viral genome in SARS-CoV-2 infected hPSC-COs. Schematic noted of the SARS-CoV-2 genome. **c**, PCA plot of gene expression profiles from MOCK-infected and SARS-CoV-2 infected hPSC-COs at 24 hpi (MOI=0.1). **d**, Volcano plots indicating differentially expressed genes in hPSC-COs comparing MOCK and SARS-CoV-2 infected hPSC-COs at 24 hpi (MOI=0.1). Differentially expressed genes (p -adjusted value < 0.05) with a \log_2 (Fold Change) > 2 are indicated in red. Non-significant differentially expressed genes with a \log_2 (Fold Change) > 2 are indicated in green. **e**, IPA of differentially expressed genes in **d**. **f**, Immunofluorescent staining of SARS-CoV-2 nucleocapsid protein (SARS-N) of 3 μ M MPA, 4.5 μ M QNHC or DMSO-treated hPSC-COs at 24 hour post-SARS-CoV-2 infection (MOI=0.1). Scale bar = 100 μ m.

Extended Data Figure 1. Single cell RNA-seq analysis of hPSC-derived COs. **a**, Schematic of protocol and conditions for hPSC differentiation to generate COs. **b**, Heatmap of top 10 differentially expressed genes in each cluster of single cell RNA-seq data. **c**, UMAP of *CDX2* and *VIL1*. **d**, Jitter plots for expression levels of colonic markers. Related to Fig. 1.

Extended Data Figure 2. Single cell RNA-seq analysis of hESC-derived COs at 24 hours post infection with SARS-CoV-2 pseudo-entry virus. **a**, Relative luciferase levels in lysates derived from hPSC-derived COs inoculated with pseudo-entry virus at 24 or 48 hpi (MOI=0.01). **b**, Heatmap of top 10 differentially expressed genes in each cluster of single cell RNA-seq data. **c**, UMAP of *CDX2* and *VIL1*. **d**, Jitter plots for transcript levels of colonic markers. **e**, Representative immunostaining of infected COs co-stained for KRT20 and CASP3. Scale bar = 50 μ m. **f**, Jitter plots of transcript levels for *VSV-M*, *VSV-N* and *VSV-NS* from hESC-derived COs without SARS-COV-2 infection (MOCK). Related to Fig. 2.

Extended Data Figure 3. Inhibition curves of drug candidates on SARS-CoV-2 pseudo-entry virus compared to control VSVG virus infected hPSC-COs (For both viruses, MOI=0.01). Related to Fig. 3.

Extended Data Figure 4. Western blotting (a) and quantification (b) to confirm MPA and QNHC's anti-SARS-CoV-2 activity on Vero cells at 24 hpi (MOI=0.01). Related to Fig. 4.

Methods

hESC maintenance and colonic lineage differentiation

hESCs were grown and maintained on 1% Matrigel (Corning)-coated six-well plates in StemFlex medium (Gibco) at 37°C with 5% CO₂. For definitive endoderm (DE) differentiation, hESCs were cultured to achieve 80-90% confluency, and treated with 3 μM CHIR99021 (CHIR, Stem-RD) and 100 ng/ml Activin A (R&D systems) in basal medium RPMI1640 (Cellgro) supplemented with 1X Pen-Strep (Gibco) for 1 day, and changed to the basal medium containing only 100 ng/ml Activin A the next day. To induce CDX2⁺ hindgut endoderm, DE were treated with 3 μM CHIR99021 and 500 ng/ml FGF4 (Peprotech) in RPMI1640 supplemented with 1X B27 supplement (Gibco) and 1X Pen-Strep (Gibco) for 4 days with daily changing of fresh media. Organoids began to bud out from the 2D culture during the hindgut differentiation process. The hindgut endoderm was then subjected to colonic lineage induction by treatment with 100 ng/ml BMP2 (Peprotech), 3 μM CHIR99021 and 100 ng/ml hEGF (Peprotech) in Advance DMEM F12 medium supplemented with 1X B27 supplement (Gibco), 1X GlutaMax (Gibco), 10 mM HEPES (Gibco) and 1X Pen-Strep (Gibco) for 3 days with daily changing of fresh medium. After colonic fate induction, the colon progenitor organoids were collected from the initial 2D cultures and embedded in a 100% Matrigel dome in a 24-well plate. Differentiation to mature colonic cell types was achieved by culturing these colon progenitor organoids in differentiation medium containing 600 nM LDN193189 (Axon), 3 μM CHIR99021 and 100 ng/ml hEGF in Advance DMEM F12 medium supplemented with 1X B27 supplement, 1X GlutaMax, 10 mM HEPES and 1X Pen-Strep. The differentiation medium was refreshed every 3 days for at least 40 days

to achieve full colonic differentiation. The colon organoids were passaged and expanded every 10 – 14 days at 1:6 density. To passage the organoids, the Matrigel domes containing the organoids were scrapped off the plate and resuspended in cold splitting media (Advance DMEM F12 medium supplemented with 1X GlutaMax, 10 mM HEPES and 1X Pen-Strep). The organoids were mechanically dislodged from the Matrigel dome and fragmented by pipetting in cold splitting media. The old Matrigel and splitting media were removed after pelleting cells and the organoids were resuspended in 100% Matrigel. 50 μ L Matrigel containing fragmented colon organoids were plated in one well of a pre-warmed 24-well plate.

Cell Lines

HEK293T (human [*Homo sapiens*] fetal kidney) and Vero E6 (African green monkey [*Chlorocebus aethiops*] kidney) were obtained from ATCC (<https://www.atcc.org/>). Cells were cultured in Dulbecco's Modified Eagle Medium (DMEM) supplemented with 10% fetal bovine serum and 100 I.U./mL penicillin and 100 μ g/mL streptomycin. All cell lines were incubated at 37°C with 5% CO₂.

SARS-CoV-2 Pseudo-Entry Viruses

Recombinant Indiana VSV (rVSV) expressing SARS-CoV-2 spikes were generated as previously described²³. HEK293T cells were grown to 80% confluency before transfection with pCMV3-SARS-CoV2-spike (kindly provided by Dr. Peihui Wang, Shandong University, China) using FuGENE 6 (Promega). Cells were cultured overnight

at 37°C with 5% CO₂. The next day, medium was removed and VSV-G pseudotyped ΔG-luciferase (G*ΔG-luciferase, Kerafast) was used to infect the cells in DMEM at an MOI of 3 for 1 hr before washing the cells with 1X DPBS three times. DMEM supplemented with 2% fetal bovine serum and 100 I.U./mL penicillin and 100 μg/mL streptomycin was added to the infected cells and they were cultured overnight as described above. The next day, the supernatant was harvested and clarified by centrifugation at 300g for 10 min and aliquots stored at –80°C.

SARS-CoV-2 Viruses

Severe acute respiratory syndrome coronavirus 2 (SARS-CoV-2), isolate USA-WA1/2020 (NR-52281) was deposited by the Center for Disease Control and Prevention and obtained through BEI Resources, NIAID, NIH. SARS-CoV-2 was propagated in Vero E6 cells in DMEM supplemented with 2% FBS, 4.5 g/L D-glucose, 4 mM L-glutamine, 10 mM Non-Essential Amino Acids, 1 mM Sodium Pyruvate and 10 mM HEPES. Infectious titers of SARS-CoV-2 were determined by plaque assay in Vero E6 cells in Minimum Essential Media supplemented with 2% FBS, 4 mM L-glutamine, 0.2% BSA, 10 mM HEPES and 0.12% NaHCO₃ and 0.7% agar. All work involving live SARS-CoV-2 was performed in the CDC/USDA-approved BSL-3 facility of the Global Health and Emerging Pathogens Institute at the Icahn School of Medicine at Mount Sinai in accordance with institutional biosafety requirements.

SARS-CoV-2 pseudo-entry virus infections

To assay pseudo-typed virus infection on colon organoids, COs were seeded in 24 well plates. Pseudo-typed virus was added at MOI=0.01 plus polybrene at a final concentration of 8 $\mu\text{g}/\text{mL}$, and the plate centrifuged for 1 hr at 1200g. At 3 hpi, the infection medium was replaced with fresh medium. At 24 hpi, colon organoids were harvested for luciferase assays or immunostaining analysis. For chemical screening analysis, colon organoids were digested by TrypLE and seeded in 384 well plates at 1×10^4 cells per well. After chemical treatment, pseudo-typed virus was added at MOI=0.01 and the plate centrifuged for 1 hr at 1200g. At 24 hpi, hPSC-COs were harvested for luciferase assays according to the Luciferase Assay System protocol (Promega).

SARS-CoV-2 virus infections

hPSC-COs were infected with SARS-CoV-2 in the CO media at an MOI of 0.1, 0.05 or 0.01 as indicated and incubated at 37°C. At 24 hpi, cells were washed three times with PBS and harvested for either RNA analysis or immunofluorescence staining.

Approximately 2.5×10^5 Vero E6 cells were pre-treated with the indicated compounds for 1 h prior to infection with SARS-CoV-2 at an MOI of 0.01 in DMEM supplemented with 2% FBS, 4.5 g/L D-glucose, 4 mM L-glutamine, 10 mM Non-Essential Amino Acids, 1 mM Sodium Pyruvate and 10 mM HEPES. At 24 hpi, cells were washed three times with PBS before harvesting for immunofluorescence staining or RNA or protein analysis.

Cells were lysed in RIPA buffer for protein analysis or fixed in 5% formaldehyde for 24 h for immunofluorescent staining, prior to safe removal from the BSL-3 facility.

Colon organoid processing and immunostaining

The colon organoids were released from Matrigel using Cell Recovery Solution (Corning) on ice for 1 hr, followed by fixation in 4% paraformaldehyde for 4 hr at 4°C, washed twice with 1X PBS and allowed to sediment in 30% sucrose overnight. The organoids were then embedded in OCT (TissueTek) and cryo-sectioned at 10 µm thickness. For indirect immunofluorescence staining, sections were rehydrated in 1X PBS for 5 min, permeabilized with 0.2% Triton in 1X PBS for 10 min, and blocked with blocking buffer containing 5% normal donkey serum in 1X PBS for 1 hr. The sections were then incubated with the corresponding primary antibodies diluted in blocking buffer at 4°C overnight. The following day, sections were washed three times with 1X PBS before incubating with fluorophore-conjugated secondary antibody for one hr at RT. The sections were washed three times with 1X PBS and mounted with Prolong Gold Antifade mounting media with DAPI (Life technologies). Images were acquired using an LSM880 Laser Scanning Confocal Microscope (Zeiss) and processed with Zen or Imaris (Bitplane) software.

Immunofluorescent staining

Organoids and tissues were fixed in 4% PFA for 20 min at RT, blocked in Mg²⁺/Ca²⁺ free PBS plus 5% horse serum and 0.3% Triton-X for 1 hr at RT, and then incubated

with primary antibody at 4°C overnight. The information for primary antibodies is provided in **Extended Data Table 2**. Secondary antibodies included donkey anti-mouse, goat, rabbit or chicken antibodies conjugated with Alexa-Fluor-488, Alexa-Fluor-594 or Alexa-Fluor-647 fluorophores (1:500, Life Technologies). Nuclei were counterstained by DAPI.

Western blot

Protein was extracted from cells in Radioimmunoprecipitation assay (RIPA) lysis buffer containing 1X Complete Protease Inhibitor Cocktail (Roche) and 1X Phenylmethylsulfonyl fluoride (Sigma Aldrich) prior to safe removal from the BSL-3 facility. Samples were analysed by SDS-PAGE and transferred onto nitrocellulose membranes. Proteins were detected using rabbit polyclonal anti-GAPDH (Sigma Aldrich, G9545), mouse monoclonal anti-SARS-CoV-2 Nucleocapsid [1C7] and mouse monoclonal anti-SARS-CoV-2 Spike [2B3E5] protein (a kind gift by Dr. T. Moran, Center for Therapeutic Antibody Discovery at the Icahn School of Medicine at Mount Sinai). Primary antibodies were detected using Fluorophore-conjugated secondary goat anti-mouse (IRDye 680RD, 926-68070) and goat anti-rabbit (IRDye 800CW, 926-32211) antibodies. Antibody-mediated fluorescence was detected on a LI-COR Odyssey CLx imaging system and analyzed using Image Studio software (LI-COR).

Single cell organoid preparation for scRNA-sequencing

The colon organoids cultured in Matrigel domes were dissociated into single cells using 0.25% Trypsin (Gibco) at 37°C for 10 min, and the trypsin was then neutralized with DMEM F12 supplemented with 10% FBS. The dissociated organoids were pelleted and resuspended with L15 Medium (Gibco) supplemented with 10 mM HEPES, and 10 ng/ml DNaseI (Sigma). The resuspended organoids were then placed through a 40 µm filter to obtain a single cell suspension, and stained with DAPI followed by sorting of live cells using an ARIA II flow cytometer (BD Biosciences). The live colonic single cell suspension was transferred to the Genomics Resources Core Facility at Weill Cornell Medicine to proceed with the Chromium Single Cell 3' Reagent Kit v3 (10x Genomics, product code # 1000075) using 10X Genomics Chromium Controller. A total of 10,000 cells were loaded into each channel of the Single-Cell A Chip to target 8000 cells. Briefly, according to manufacturer's instruction, the sorted cells were washed with 1x PBS + 0.04% BSA, counted by a Bio-Rad TC20 Cell Counter, and cell viability was assessed and visualized. A total of 10,000 cells and Master Mixes were loaded into each channel of the cartridge to generate the droplets on Chromium Controller. Beads-in-Emulsion (GEMs) were transferred and GEMs-RT was undertaken in droplets by PCR incubation. GEMs were then broken and pooled fractions recovered. After purification of the first-strand cDNA from the post GEM-RT reaction mixture, barcoded, full-length cDNA was amplified via PCR to generate sufficient mass for library construction. Enzymatic fragmentation and size selection were used to optimize the cDNA amplicon size. TruSeq Read 1 (read 1 primer sequence) was added to the molecules during GEM incubation. P5, P7, a sample index, and TruSeq Read 2 (read 2 primer sequence) were added via End Repair, A-tailing, Adaptor Ligation, and PCR.

The final libraries were assessed by Agilent Technology 2100 Bioanalyzer and sequenced on Illumina NovaSeq sequencer with pair-end 100 cycle kit (28+8+91).

Sequencing and gene expression UMI counts matrix generation

T FASTQ files were imported to a 10x Cell Ranger - data analysis pipeline (v3.0.2) to align reads, generate feature-barcode matrices and perform clustering and gene expression analysis. In a first step, cellranger *mkfastq* demultiplexed samples and generated fastq files; and in the second step, cellranger count aligned fastq files to the reference genome and extracted gene expression UMI counts matrix. In order to measure viral gene expression, we built a custom reference genome by integrating the four virus genes and luciferase into the 10X pre-built human reference (GRCh38 v3.0.0) using cellranger *mkref*. The sequences of four viral genes (VSV-N VSV-NS, VSV-M and VSV-L) were retrieved from NCBI (<https://www.ncbi.nlm.nih.gov/nucore/335873>), and the sequence of the luciferase was retrieved from HIV-Luc.

Single-cell RNA-seq data analysis

We filtered cells with less than 300 or more than 8000 genes detected as well as cells with mitochondria gene content greater than 30%, and used the remaining cells (6175 cells for the uninfected sample and 2962 cells for the infected sample) for downstream analysis. We normalized the gene expression UMI counts for each sample separately using a deconvolution strategy²⁴ implemented by the R *scrn* package (v.1.14.1). In particular, we pre-clustered cells in each sample using the *quickCluster* function; we

computed size factor per cell within each cluster and rescaled the size factors by normalization between clusters using the *computeSumFactors* function; and we normalized the UMI counts per cell by the size factors and took a logarithm transform using the *normalize* function. We further normalized the UMI counts across samples using the *multiBatchNorm* function in the R batchelor package (v1.2.1). We identified highly variable genes using the *FindVariableFeatures* function in the R Seurat (v3.1.0)²⁵, and selected the top 3000 variable genes after excluding mitochondria genes, ribosomal genes and dissociation-related genes. The list of dissociation-related genes was originally built on mouse data²⁶, we converted them to human ortholog genes using Ensembl BioMart. We aligned the two samples based on their mutual nearest neighbors (MNNs) using the *fastMNN* function in the R batchelor package, this was done by performing a principal component analysis (PCA) on the highly variable genes and then correcting the principal components (PCs) according to their MNNs. We selected the corrected top 50 PCs for downstream visualization and clustering analysis. We ran the uniform manifold approximation and projection (UMAP) dimensional reduction using the *RunUMAP* function in the R Seurat²⁵ package with training epochs setting to 2000. We clustered cells into eight clusters by constructing a shared nearest neighbor graph and then grouping cells of similar transcriptome profiles using the *FindNeighbors* function and *FindClusters* function (resolution set to 0.2) in the R Seurat package. We identified marker genes for each cluster by performing differential expression analysis between cells inside and outside that cluster using the *FindMarkers* function in the R Seurat package. After reviewing the clusters, we merged four clusters that were likely from stem cell population into a single cluster (*LGR5*⁺ or *BMI1*⁺ stem cells) and kept the other

four clusters (*KRT20*⁺ epithelial cells, *MUC2*⁺ goblet cells, *EPHB2*⁺ TA cells, and *CHGA*⁺ NE cells) for further analysis. We re-identified marker genes for the merged five clusters and selected the top 10 positive marker genes per cluster for heatmap plot using the *DoHeatmap* function in the R Seurat package²⁵.

In vivo transplantation and drug evaluation

hPSC-COs were harvested by cell scraper, mixed with 20 µl Matrigel (Corning) and transplanted under the kidney capsule of 7-9 weeks old male NSG mice. Two weeks post-transplantation, SARS-CoV-2 pseudo-entry virus was inoculated locally at 1×10^3 FFU. At 24 hpi, the mice were euthanized and used for immunohistochemistry analysis.

To determine the MPA's activity *in vivo*, the mice were treated with 50 mg/kg MPA in (10%DMSO/90% corn oil) by IP injection. Two hours after drug administration, SARS-CoV-2 pseudo-entry virus was inoculated locally at 1×10^3 FFU. At 24 hpi, the mice were euthanized and used for immunohistochemistry analysis.

All animal work was conducted in agreement with NIH guidelines and approved by the WCM Institutional Animal Care and Use Committee (IACUC) and the Institutional Biosafety Committee (IBC).

High throughput chemical screening

To perform the high throughput small molecule screen, hPSC-COs were dissociated using TrypLE for 20 min in a 37°C waterbath and replated into 10% Matrigel-coated 384-well plates at 20,000 cells/40 µl medium/well. After 6 hr, cells were treated with compounds from an in-house library of ~1280 FDA-approved drugs (Prestwick) at 10 µM. DMSO treatment was used as a negative control. One hour later, cells will be infected with SARS-CoV-2 pseudo virus (MOI=0.01). After 24 hpi, hPSC-COs were harvested for luciferase assay following the Luciferase Assay System protocol (Promega).

RNA-Seq following viral infections

Organoid infections were performed at an MOI of 0.1 and harvested at 24 hpi in DMEM supplemented with 0.3% BSA, 4.5 g/L D-glucose, 4 mM L-glutamine and 1 µg/ml TPCK-trypsin. Total RNA was extracted in TRIzol (Invitrogen) and DNase I treated using Direct-zol RNA Miniprep kit (Zymo Research) according to the manufacturer's instructions. RNA-seq libraries of polyadenylated RNA were prepared using the TruSeq RNA Library Prep Kit v2 (Illumina) or TruSeq Stranded mRNA Library Prep Kit (Illumina) according to the manufacturer's instructions. cDNA libraries were sequenced using an Illumina NextSeq 500 platform. Raw reads were aligned to the human genome (hg19) using the RNA-Seq Alignment App on BaseSpace (Illumina, CA), following differential expression analysis using DESeq²⁷. Differentially expressed genes (DEGs) were characterized for each sample (p adjusted-value < 0.05). Volcano plots were constructed using custom scripts in R.

Statistical analysis

N=3 independent biological replicates were used for all experiments unless otherwise indicated. n.s. indicates non-significance. *P*-values were calculated by unpaired two-tailed Student's t-test unless otherwise indicated. **p*<0.05, ***p*<0.01 and ****p*<0.001.

Acknowledgements

This work was supported by the Department of Surgery, Weill Cornell Medicine (T.E., F.P, S.C.), by the Defense Advanced Research Projects Agency (DARPA) through a contract with B.T. (DARPA-16-35-INTERCEPT-FP-006) and by the Jack Ma Foundation to D.D.H. The authors would like to thank Dr. Tom Moran, Center for Therapeutic Antibody Discovery at the Icahn School of Medicine at Mount Sinai for providing anti-SARS-Cov-SPIKE antibody. We are also very grateful for technical support and advice provided by Lee Cohen-Gould and Robert Lance Furler in the Cell Screening Core Facility of WCM.

Author contributions

S. C., T. E., F. P., D. H., R.S, H. J. C., H. W., conceived and designed the experiments. X. D., Y.H., L. Y., F. P., performed organoid differentiation, *in vivo* transplantation, pseudo-virus infection and drug screening. P. W, Y. Hu., performed SARS2-CoV-2 pseudo-entry virus related experiments. B. N., and B. T., performed SARS2-CoV-2 related experiments.

T. Z., J. X. Z., D. X., X. W., performed the scRNA-sequencing and bioinformatics analyses.

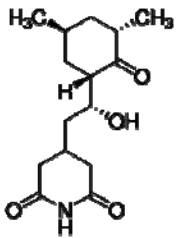
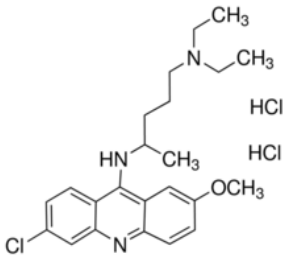
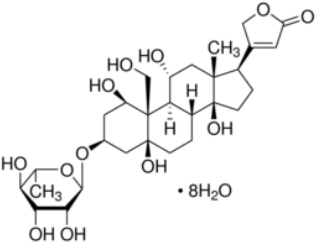
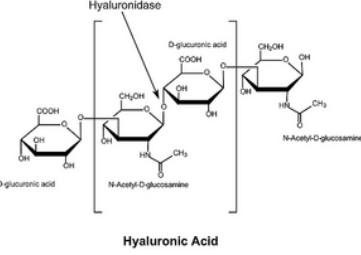
Competing interests

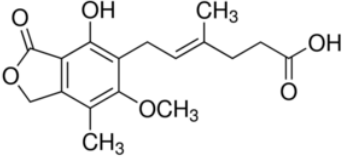
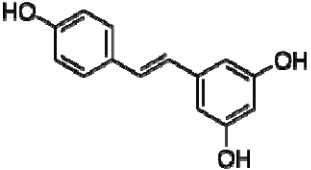
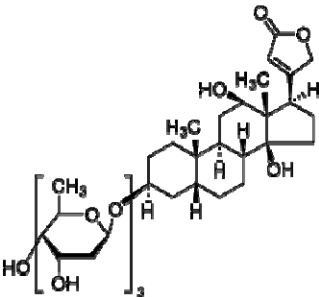
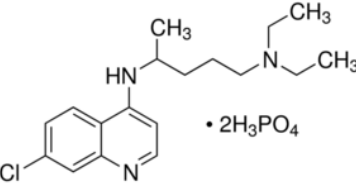
The authors declare the following competing interests: R.E.S. is on the scientific advisory board of Miromatrix Inc. The other authors have no competing of interest.

Data Availability

scRNA-seq and RNA-seq data is available from the GEO repository database, accession number GSE147975.

Extended Data Table 1. Primary hit compounds from chemical screening.

Cycloheximide	Sigma	C7698	
Quinacrine dihydrochloride	Sigma	Q3251	
Ouabain octahydrate	Sigma	O3125	
Anisomycin	Sigma	A9789	

Mycophenolic acid	Sigma	M5255	 <p>The chemical structure of Mycophenolic acid consists of a central benzene ring. At the 1-position, there is a furanone ring fused to the benzene ring. At the 2-position, there is a hydroxyl group (-OH). At the 3-position, there is a methoxy group (-OCH₃). At the 4-position, there is a methyl group (-CH₃). At the 5-position, there is a propenoic acid side chain (-CH=CH-CH₂-COOH).</p>
Resveratrol	Sigma	R5010	 <p>The chemical structure of Resveratrol is a stilbenoid, consisting of two phenolic rings connected by a double bond. The left ring has a hydroxyl group (-OH) at the para position. The right ring has hydroxyl groups (-OH) at the meta and para positions.</p>
Digoxin	Sigma	D6003	 <p>The chemical structure of Digoxin is a complex steroid molecule. It features a four-ring steroid nucleus with several methyl groups (H₃C) and hydroxyl groups (-OH) at various positions. A digitoxin sugar moiety is attached to the C-3 position of the steroid nucleus. The digitoxin sugar is a trisaccharide consisting of three glucose units linked together.</p>
Chloroquine	Sigma	C6628	 <p>The chemical structure of Chloroquine is a quinoline derivative. It features a quinoline ring system with a chlorine atom (-Cl) at the 7-position and a diethylamino group (-NH-CH₂-CH₂-N(CH₂-CH₃)₂) at the 4-position. The structure is shown as a salt with two phosphate groups (-•2H₃PO₄).</p>

Extended Data Table 2. Antibodies used for immunostaining.

	Species	Vendor	Catalogue number	dilution
Primary antibodies				
CDX2	Mouse	Biogenex	MU392A-UC	1:500
Villin	Goat	Santa Cruz	sc-7672 (C-19)	1:200
Villin	Mouse	Santa Cruz	sc-58897	1:200
Chromogranin A	Rabbit	Immunostar	20086	1:300
SATB2	Mouse	Sigma	HPA001042	1:50
Cytokeratin-20	Mouse	Santa Cruz	sc-56522 (SPM140)	1:100
Mucin2	Rabbit	Abcam	ab76774	1:100
EPHB2	Goat	R&D	AF467	1:100
ACE2	Goat	R&D	AF933	1:500
ACE2	Rabbit	Abcam	ab15348	1:500
Firefly luciferase	Mouse	Thermo Fisher	35-6700	1:200
Firefly luciferase	Rabbit	Abcam	Ab185924	1:100
Anti-SARS-CoV Nucleocapsid	Rabbit	Rockland	200-402-A50	1:250
Cleaved Caspase-3 (Asp175)	Rabbit	Cell Signaling	9661S	1:200
Secondary antibodies				
Cy3-conjugated anti rabbit	Donkey	Jackson ImmunoResearch	711-165-152	1:500
Cy3-conjugated anti goat	Donkey	Jackson ImmunoResearch	705-165-003	1:500
Cy3-conjugated anti mouse	Donkey	Jackson ImmunoResearch	715-165-150	1:500
Cy2-conjugated anti rabbit	Donkey	Jackson ImmunoResearch	711-225-152	1:500
Cy2-conjugated anti goat	Donkey	Jackson ImmunoResearch	705-225-147	1:500
Cy2-conjugated anti mouse	Donkey	Jackson ImmunoResearch	715-225-150	1:500
Donkey anti-Mouse IgG Secondary Antibody, Alexa Fluor 488	Donkey	Thermo Fisher	A21202	1:1000
Donkey anti-Rabbit IgG Secondary Antibody, Alexa Fluor 555	Donkey	Thermo Fisher	A31572	1:1000

Donkey anti-Goat IgG Secondary Antibody, Alexa Fluor 555	Donkey	Thermo Fisher	A32816	1:1000
Donkey anti-Rabbit IgG Secondary Antibody, Alexa Fluor 647	Donkey	Thermo Fisher	A32795	1:1000

References

- 1 https://journals.lww.com/ajg/Documents/COVID_Digestive_Symptoms_AJG_Preproof.pdf.
- 2 Crespo, M. *et al.* Colonic organoids derived from human induced pluripotent stem cells for modeling colorectal cancer and drug testing. *Nat Med* **23**, 878-884, doi:10.1038/nm.4355 (2017).
- 3 Munera, J. O. *et al.* Differentiation of Human Pluripotent Stem Cells into Colonic Organoids via Transient Activation of BMP Signaling. *Cell Stem Cell* **21**, 51-64 e56, doi:10.1016/j.stem.2017.05.020 (2017).
- 4 Hoffmann, M. *et al.* SARS-CoV-2 Cell Entry Depends on ACE2 and TMPRSS2 and Is Blocked by a Clinically Proven Protease Inhibitor. *Cell*, doi:10.1016/j.cell.2020.02.052 (2020).
- 5 Whitt, M. A. Generation of VSV pseudotypes using recombinant DeltaG-VSV for studies on virus entry, identification of entry inhibitors, and immune responses to vaccines. *J Virol Methods* **169**, 365-374, doi:10.1016/j.jviromet.2010.08.006 (2010).
- 6 Nie, J. *et al.* Establishment and validation of a pseudovirus neutralization assay for SARS-CoV-2. *Emerg Microbes Infect* **9**, 680-686, doi:10.1080/22221751.2020.1743767 (2020).
- 7 <https://www.fda.gov/news-events/press-announcements/coronavirus-covid-19-update-daily-roundup-march-30-2020>.
- 8 <https://doi.org/10.1101/2020.03.24.004655>.
- 9 Law, H. K. *et al.* Chemokine up-regulation in SARS-coronavirus-infected, monocyte-derived human dendritic cells. *Blood* **106**, 2366-2374, doi:10.1182/blood-2004-10-4166 (2005).
- 10 Channappanavar, R. *et al.* Dysregulated Type I Interferon and Inflammatory Monocyte-Macrophage Responses Cause Lethal Pneumonia in SARS-CoV-Infected Mice. *Cell Host Microbe* **19**, 181-193, doi:10.1016/j.chom.2016.01.007 (2016).
- 11 Zhou, P. *et al.* A pneumonia outbreak associated with a new coronavirus of probable bat origin. *Nature* **579**, 270-273, doi:10.1038/s41586-020-2012-7 (2020).
- 12 Ou, X. *et al.* Characterization of spike glycoprotein of SARS-CoV-2 on virus entry and its immune cross-reactivity with SARS-CoV. *Nat Commun* **11**, 1620, doi:10.1038/s41467-020-15562-9 (2020).
- 13 Kuypers, D. R. *et al.* Consensus report on therapeutic drug monitoring of mycophenolic acid in solid organ transplantation. *Clin J Am Soc Nephrol* **5**, 341-358, doi:10.2215/CJN.07111009 (2010).
- 14 Franklin, T. J. & Cook, J. M. The inhibition of nucleic acid synthesis by mycophenolic acid. *Biochem J* **113**, 515-524, doi:10.1042/bj1130515 (1969).
- 15 Chapuis, A. G. *et al.* Effects of mycophenolic acid on human immunodeficiency virus infection in vitro and in vivo. *Nat Med* **6**, 762-768, doi:10.1038/77489 (2000).
- 16 Diamond, M. S., Zachariah, M. & Harris, E. Mycophenolic acid inhibits dengue virus infection by preventing replication of viral RNA. *Virology* **304**, 211-221, doi:10.1006/viro.2002.1685 (2002).

- 17 Cheng, K. W. *et al.* Thiopurine analogs and mycophenolic acid synergistically inhibit the papain-like protease of Middle East respiratory syndrome coronavirus. *Antiviral Res* **115**, 9-16, doi:10.1016/j.antiviral.2014.12.011 (2015).
- 18 Lin, M. H. *et al.* Disulfiram can inhibit MERS and SARS coronavirus papain-like proteases via different modes. *Antiviral Res* **150**, 155-163, doi:10.1016/j.antiviral.2017.12.015 (2018).
- 19 <https://www.biorxiv.org/content/10.1101/2020.03.22.002386v2>.
- 20 Al Ghamdi, M. *et al.* Treatment outcomes for patients with Middle Eastern Respiratory Syndrome Coronavirus (MERS CoV) infection at a coronavirus referral center in the Kingdom of Saudi Arabia. *BMC Infect Dis* **16**, 174, doi:10.1186/s12879-016-1492-4 (2016).
- 21 <https://www.drugs.com/mmx/quinacrine-hydrochloride.html>.
- 22 Lane, T. R., Comer, J. E., Freiberg, A. N., Madrid, P. B. & Ekins, S. Repurposing Quinacrine against Ebola Virus Infection In Vivo. *Antimicrob Agents Chemother* **63**, doi:10.1128/AAC.01142-19 (2019).
- 23 Zhao, X. *et al.* Immunization-Elicited Broadly Protective Antibody Reveals Ebolavirus Fusion Loop as a Site of Vulnerability. *Cell* **169**, 891-904 e815, doi:10.1016/j.cell.2017.04.038 (2017).
- 24 Lun, A. T., Bach, K. & Marioni, J. C. Pooling across cells to normalize single-cell RNA sequencing data with many zero counts. *Genome Biol* **17**, 75, doi:10.1186/s13059-016-0947-7 (2016).
- 25 Stuart, T. *et al.* Comprehensive Integration of Single-Cell Data. *Cell* **177**, 1888-1902 e1821, doi:10.1016/j.cell.2019.05.031 (2019).
- 26 van den Brink, S. C. *et al.* Single-cell sequencing reveals dissociation-induced gene expression in tissue subpopulations. *Nat Methods* **14**, 935-936, doi:10.1038/nmeth.4437 (2017).
- 27 Love, M. I., Huber, W. & Anders, S. Moderated estimation of fold change and dispersion for RNA-seq data with DESeq2. *Genome Biol* **15**, 550, doi:10.1186/s13059-014-0550-8 (2014).

Figure 1.

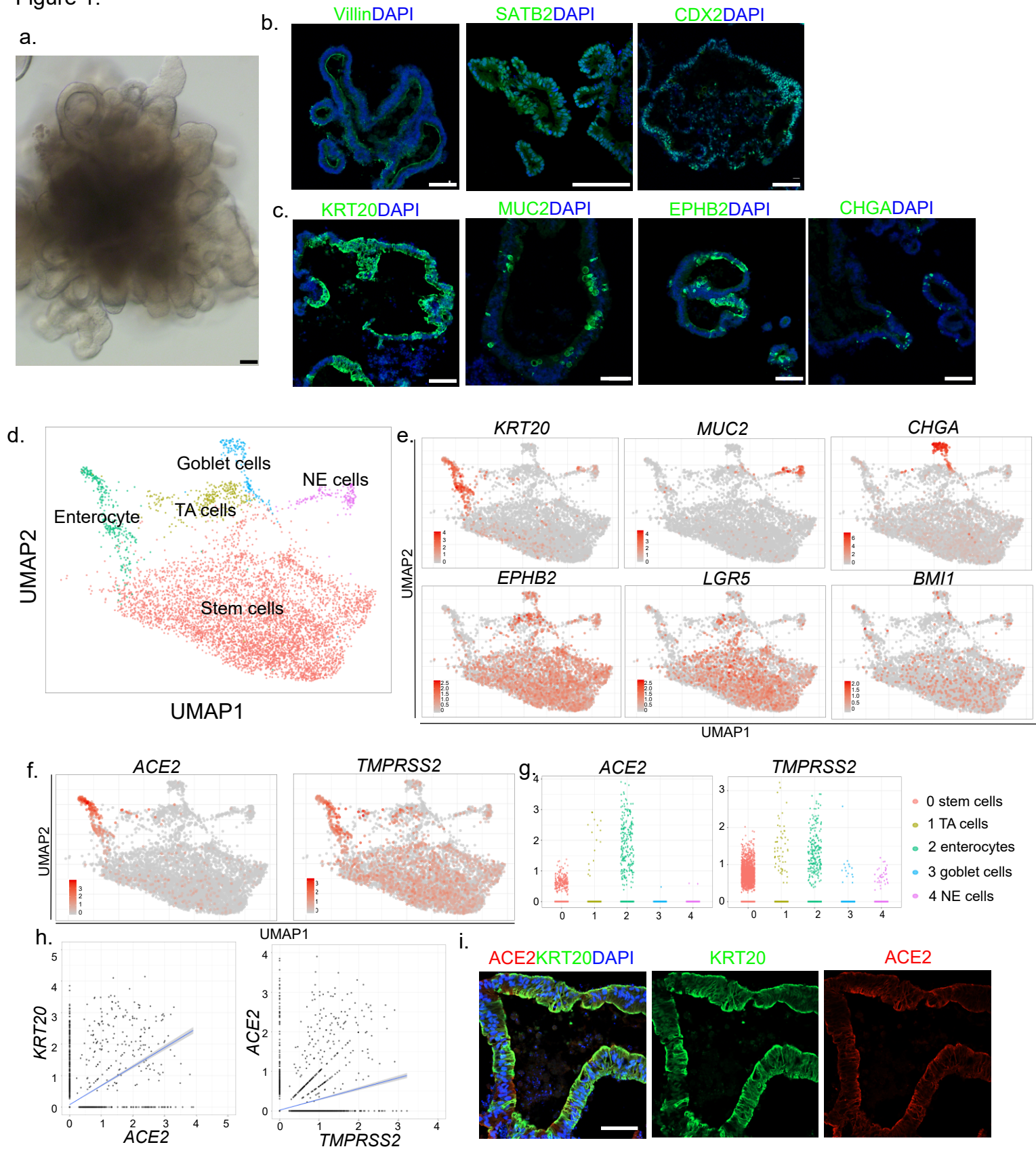


Figure 2.

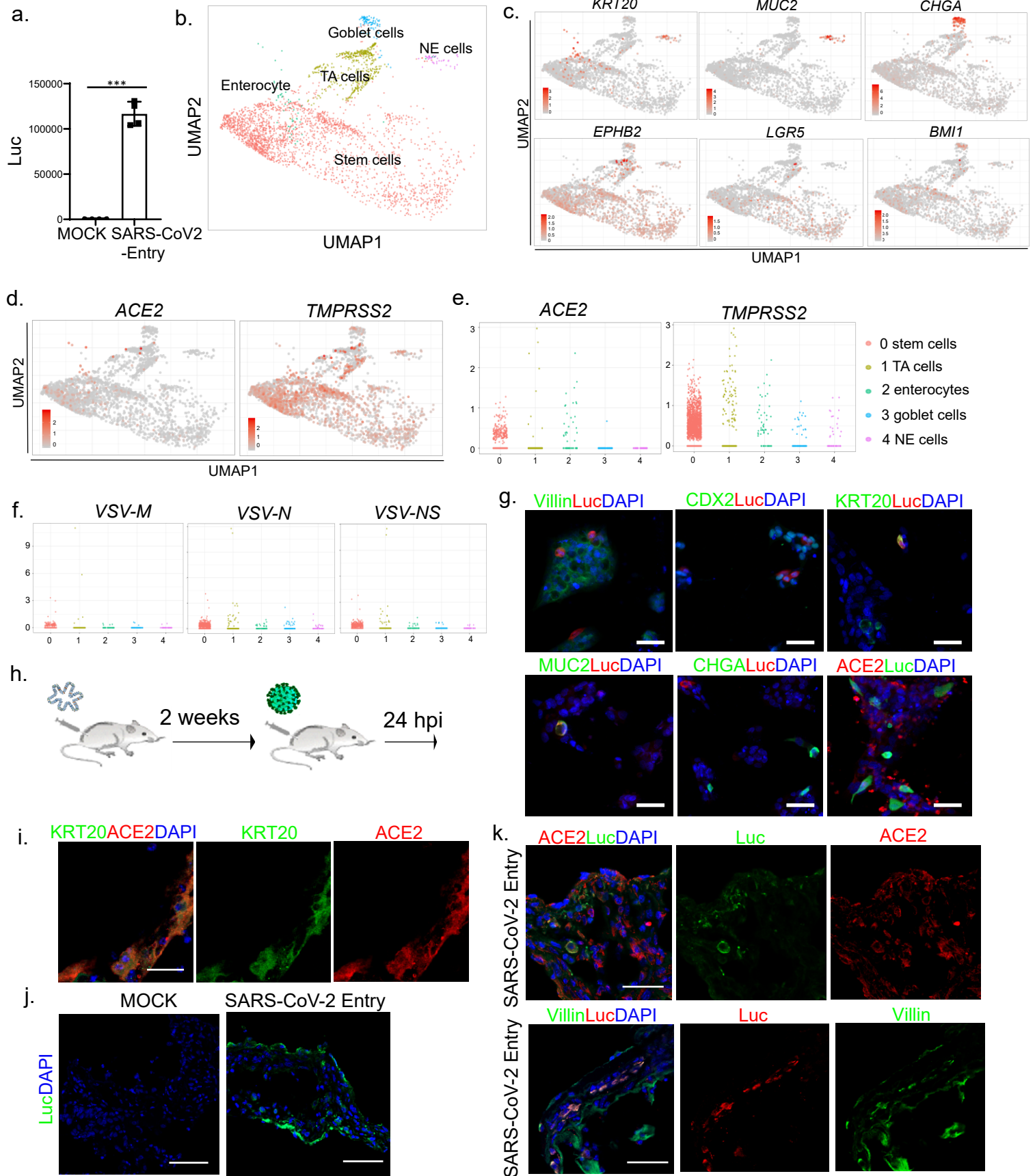


Figure 3.

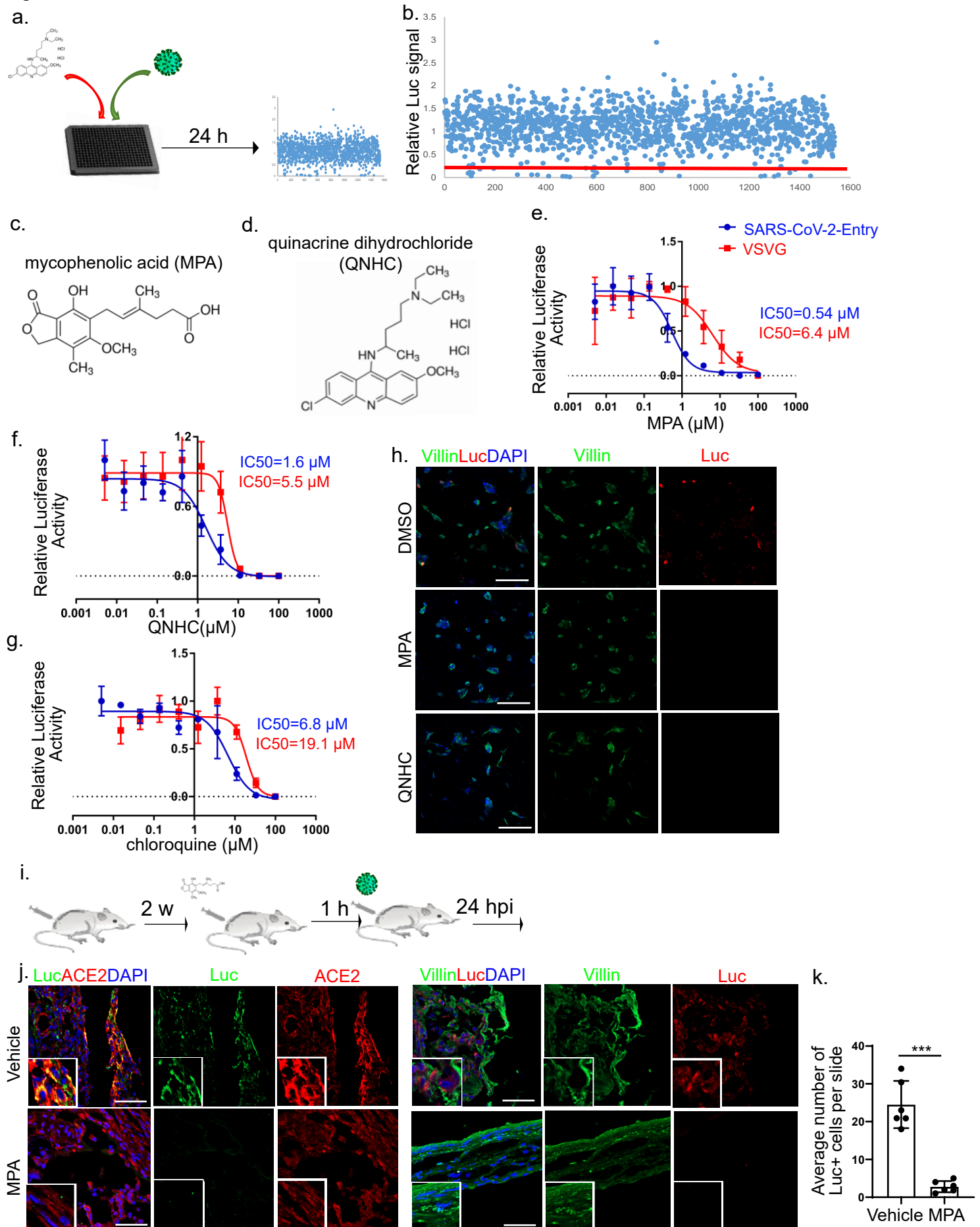
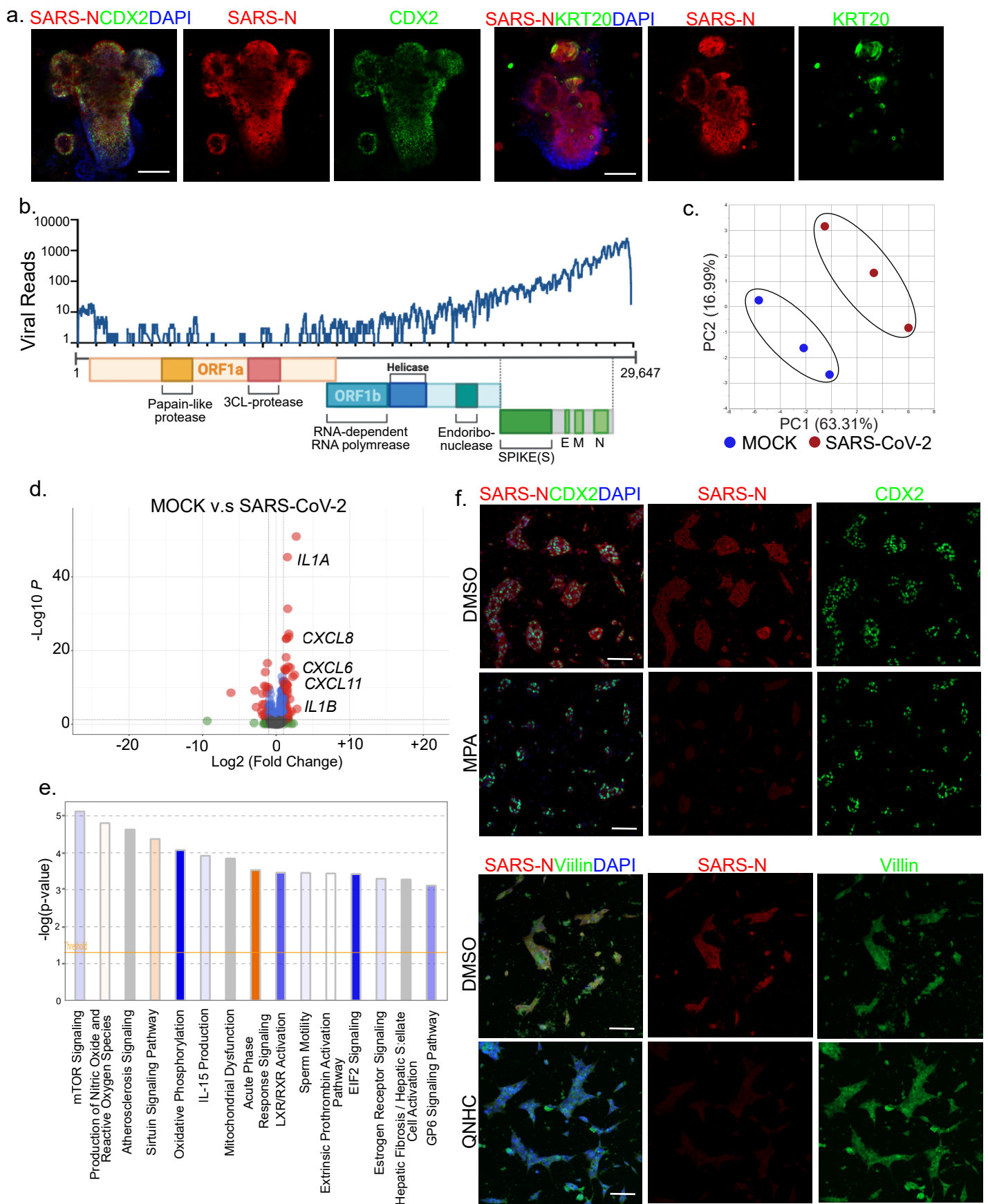
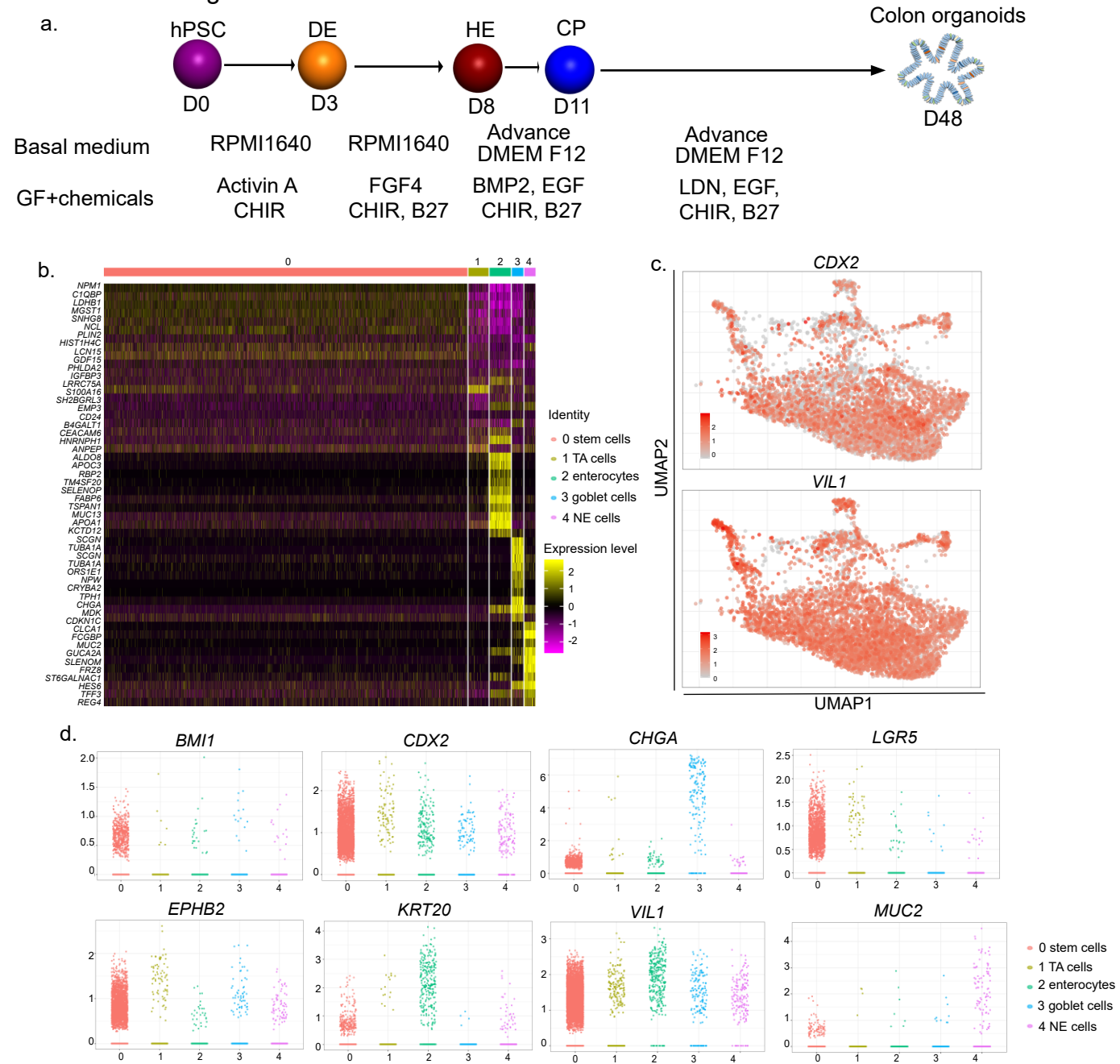


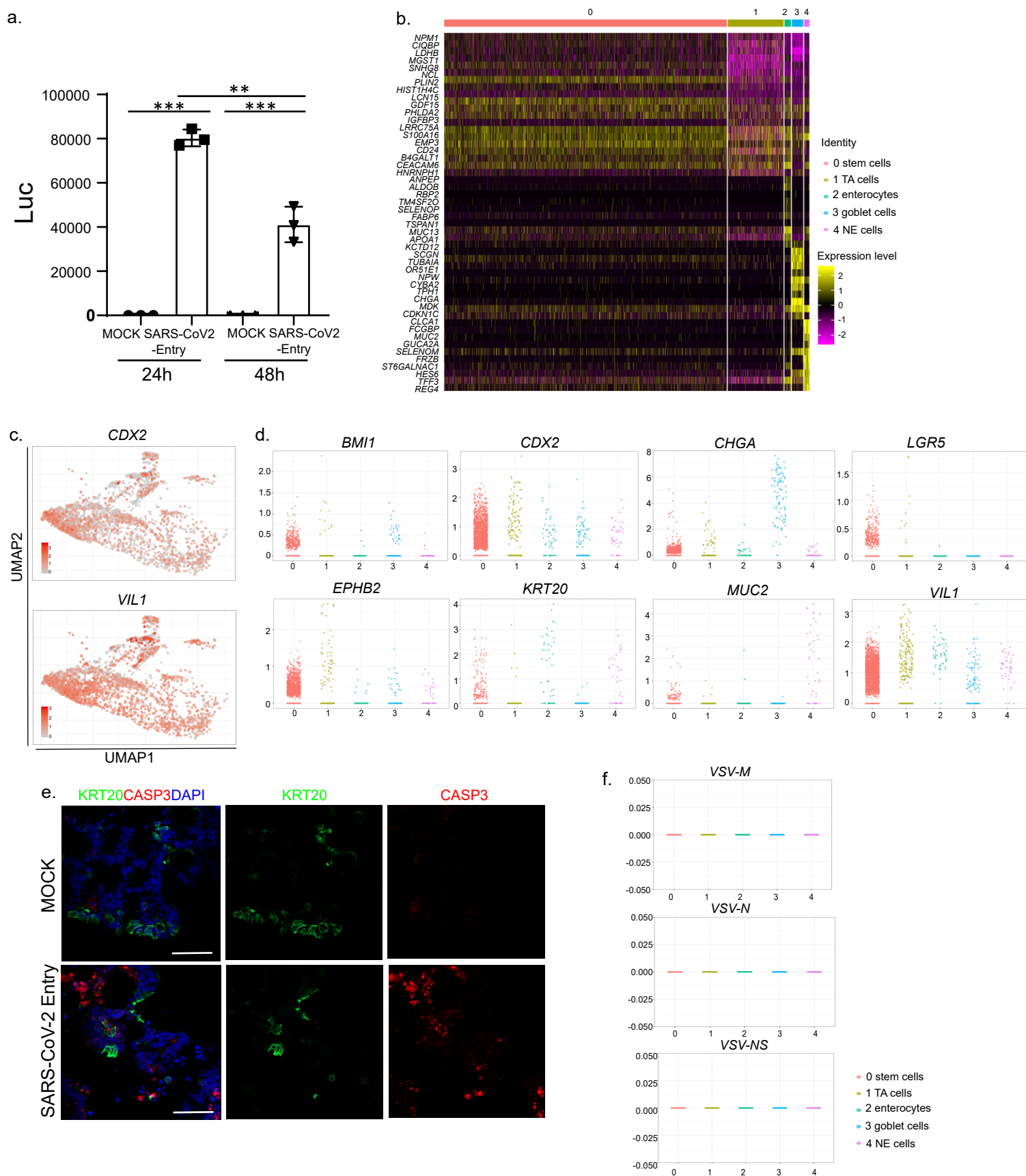
Figure 4.



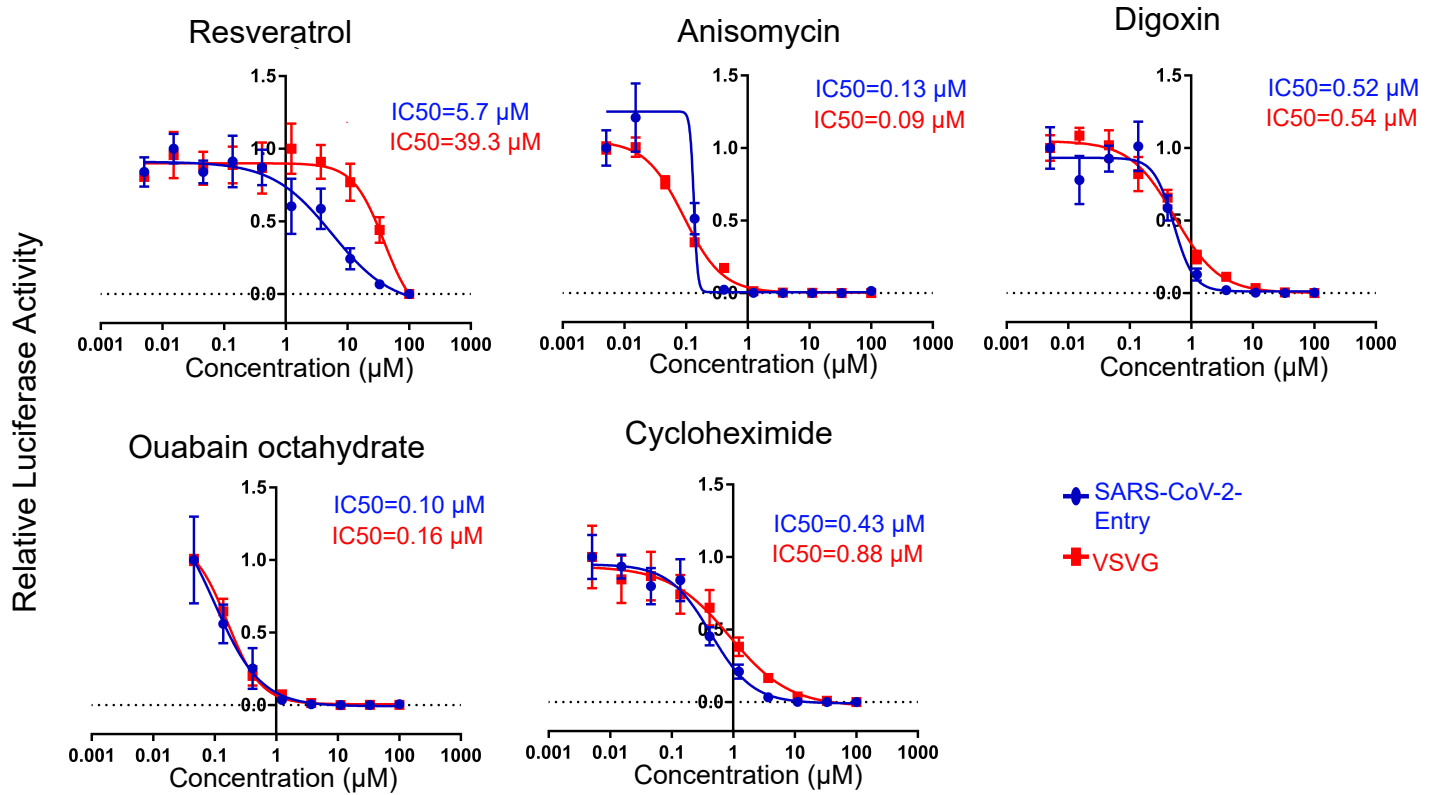
Extended Data Figure 1.



Extended Data Figure 2.



Extended Data Figure 3.



Extended Data Figure 4.

