

Thalamus is a common locus of reading, arithmetic, and IQ: Analysis of local intrinsic functional properties

Maki S. Koyama^{1,2}, Peter J. Molfese^{1,3}, Michael P. Milham^{2,4}, W. Einar Mencl¹, Kenneth R. Pugh^{1,5,6}

1. Haskins Laboratories, New Haven, CT, USA
2. Center for the Developing Brain, Child Mind Institute, New York, NY, USA
3. Section on Functional Imaging Methods, Laboratory of Brain and Cognition, Department of Health and Human Services, National Institute of Mental Health, National Institutes of Health, Bethesda, MD, USA
4. Center for Biomedical Imaging and Neuromodulation, Nathan Kline Institute, Orangeburg, NY, USA
5. Yale University School of Medicine, Department of Diagnostic Radiology, New Haven, CT, USA
6. University of Connecticut, Department of Psychology, Storrs, CT, USA

Abstract

Neuroimaging studies of basic achievement skills, reading and arithmetic, often control for the effect of IQ to identify unique neural correlates of each skill. This may underestimate possible effects of common factors between achievement and IQ measures on neuroimaging results. Here, we simultaneously examined achievement (reading and arithmetic) and IQ measures in young adults, aiming to identify MRI correlates of their common factors. Resting-state fMRI (rs-fMRI) data were analyzed using two metrics assessing local intrinsic functional properties; regional homogeneity (ReHo) and fractional amplitude low frequency fluctuation (fALFF), measuring local intrinsic functional connectivity and intrinsic functional activity, respectively. ReHo highlighted the thalamus/pulvinar (a subcortical region implied for selective attention) as a common locus for both achievement skills and IQ. More specifically, the higher the ReHo values, the lower the achievement and IQ scores. For fALFF, the left superior parietal lobule, part of the dorsal attention network, was positively associated with reading and IQ. Collectively, our results highlight attention-related regions, particularly the thalamus/pulvinar as a key region related to individual differences in performance on all the three measures. ReHo in the thalamus/pulvinar may serve as a tool to examine brain mechanisms underlying a comorbidity of reading and arithmetic difficulties, which could co-occur with weakness in general intellectual abilities.

Keywords:

reading, arithmetic, IQ, thalamus, F-test, principal component analysis, resting-state fMRI, regional homogeneity, selective attention

Highlights:

- Achievement (reading; arithmetic) and IQ measures are simultaneously examined; not controlling for IQ.
- ReHo and fALFF are used to examine local intrinsic functional connectivity and activity, respectively.
- Higher ReHo in thalamus/pulvinar is associated with lower performance on all the three measures.
- Higher fALFF in the left superior parietal lobule is associated with higher word reading and IQ.

1. Introduction

Reading and arithmetic are basic achievement skills that influence an individuals' success at school and beyond. As these domain-specific achievement skills are correlated with general intellectual abilities (indexed by IQ scores) (Gagné & St Père, 2001; Lambert & Spinath, 2018; Susan Dickerson Mayes, Calhoun, Bixler, & Zimmerman, 2009; Peng, Wang, Wang, & Lin, 2019), neuroimaging studies often control for the effect of IQ (i.e., IQ being entered as a covariate of no-interest or being matched between groups) to identify unique neural underpinnings of the achievement skills and their impairments (Ashkenazi, Rosenberg-Lee, Tenison, & Menon, 2012; De Smedt, Holloway, & Ansari, 2011; Eden et al., 2004; Hoeft et al., 2006; Koyama et al., 2011; Pugh et al., 2008; Rosenberg-Lee, Barth, & Menon, 2011). Although this analytical practice has been criticized from logical, statistical, and/or methodological perspectives (Dennis et al., 2009), it remains a topic of debate on whether IQ should be controlled for when studying relationships between brain structures/functions and the achievement skills. This lack of consensus in the literature is evident by the fact that majority of most recent neuroimaging studies of reading and arithmetic have still opted to control for IQ (Ashburn, Flowers, Napoliello, & Eden, 2020; Bulthe et al., 2019; Jolles et al., 2016; Michels, O'Gorman, & Kucian, 2018; Paz-Alonso et al., 2018).

Some prior studies, addressing the role of IQ in predicting the achievement skills and intervention responses, have indicated that IQ is not a direct cause of either academic achievement (Brankaer, Ghesquiere, & De Smedt, 2014; J. M. Fletcher, Francis, Rourke, Shaywitz, & Shaywitz, 1992; Francis, Fletcher, Shaywitz, Shaywitz, & Rourke, 1996; Murayama, Pekrun, Lichtenfeld, & Vom Hofe, 2013) or intervention responses for learning difficulties (Stuebing, Barth, Molfese, Weiss, & Fletcher, 2009; Vellutino, Scanlon, & Lyon, 2000). Furthermore, neuroimaging studies have demonstrated that activations in core regions involved in the achievement skills (e.g., the left temporoparietal junction for reading) are independent of IQ (Hancock, Gabrieli, & Hoeft, 2016; Simos, Rezaie, Papanicolaou, & Fletcher, 2014; Tanaka et al., 2011). These prior findings lead us to think that significant correlations observed between the achievement and IQ tests likely reflect the consequence of both tests measuring common latent factors. Under this circumstance, the use of IQ as a covariate of no-interest could remove some unspecified factors accounting for an achievement skill, and thus potentially producing overcorrected or counterintuitive MRI findings. However, it may be equally misleading to fail to use IQ as a covariate of interest, which would result in disregarding possible effects of shared factors between achievement and IQ measures on brain activation/connectivity.

Alternatively, both achievement and IQ measures can be simultaneously examined (e.g., an F-test with the two measures of interest) to detect regions where brain signals can be explained by either measure or their combination (Mumford, Poline, & Poldrack, 2015). This approach can answer questions, such as "which regions show significant associations with either measure (e.g., reading or IQ) or both measures". In particular, the identification of regions common to both measures could help to understand neuromechanisms underlying bidirectional interactions between the achievement and IQ measures. Such bidirectional interactions have been recently appreciated, with mounting evidence from longitudinal studies. For reading and IQ relationships, early reading performance predicts later IQ, and early IQ predicts later reading performance (Chu, vanMarle, & Geary, 2016; Ramsden et al., 2013; Ritchie, Bates, & Plomin, 2015). For arithmetic and IQ relationships, 10-week arithmetic training improves IQ, and 13-week reasoning training improves arithmetic performance (Lowrie, Logan, & Ramful, 2017; Sanchez-Perez et al., 2017). Most evidently, a meta-analysis of longitudinal studies (Peng et al., 2019) has rendered further evidence that intellectual abilities and achievement skills (both reading and mathematics) predict each other even after controlling for initial performance. Crucially, neural substrates underlying such relations, which can be mediated by shared latent factors in the achievement skills and IQ, cannot be delineated by common

analytical practices in the literature, that is, IQ being either covaried out (i.e., controlled for) or excluded from analysis.

In the current resting-state functional MRI (rs-fMRI) study, we address this issue by simultaneously examine both achievement (either reading or arithmetic) and IQ measures. Our primary aim is to explore rs-fMRI correlates common to both the achievement and IQ measures in young adults, whose achievement and IQ scores ranged along a continuum from conventionally impaired to superior performance. Specifically, we address our aim in a twofold way; 1) entering two covariates of interest – one for an achievement measure (either reading or arithmetic) and the other for Full-Scale IQ (FSIQ) and 2) entering the first principal component (PC1) – reduced from the three measures (reading, arithmetic, and FSIQ) – as the covariate of interest. The first approach uses F-tests, allowing us to detect regions associated with either measure (i.e., specific) or those associated with the common variance explained by the two measures (Mumford et al., 2015). The second approach using principal component analysis (PCA) allows us to explore common regions (Pugh et al., 2013), reflecting the shared variance among the three measures (i.e., two achievement measures and FSIQ), irrespective of the achievement domains.

When analyzing rs-fMRI data, we focus on two data-driven metrics that index local/regional intrinsic functional properties; the first is voxel-wise regional homogeneity (ReHo; Zang, Jiang, Lu, He, & Tian, 2004), and the second is fractional amplitude of low frequency fluctuations (fALFF; Zou et al., 2008). ReHo, which is calculated with Kendall's coefficient of concordance (KCC), estimates local or short-distance intrinsic functional connectivity (iFC) between the time-series of a given voxel and its nearest neighboring voxels. Jiang, et al (2015; 2016) have postulated that a higher ReHo value, representing higher synchronization of regional brain activity, indicates higher functional specification in a given region (e.g., the primary visual cortex has the highest ReHo value among regions in the visual ventral pathway). Unlike ReHo, fALFF is a frequency-domain analysis to assess the relative contribution of specific low frequency oscillations to the whole frequency range (Zou et al., 2008). That is, fALFF is a measure of local brain activity, and does not provide any information on functional connectivity. Hence, ReHo and fALFF could be complementary in such that they potentially reveal different brain regions associated with cognitive functions and dysfunctions, although similar results/regions are often reported (Bueno et al., 2019; Hu et al., 2016; Yuan et al., 2013).

Both ReHo and fALFF have successfully detected regions associated with individual differences in cognitive abilities (S. Kuhn, Vanderhasselt, De Raedt, & Gallinat, 2014; Yang et al., 2015), clinical diagnoses/traits (Du, Liu, Hua, & Wu, 2019; Han et al., 2018; Hoexter et al., 2018; Respino et al., 2019; Xu, Zhuo, Qin, Zhu, & Yu, 2015; Xue, Lee, & Guo, 2018), and training/experience effects (Koyama, Ortiz-Mantilla, Roesler, Milham, & Benasich, 2017; Qiu et al., 2019; Salvia et al., 2019; Wu et al., 2019). However, to date, there are only a handful of studies that have applied these metrics to examination of achievement skills, IQ, and/or their relationships. For reading, M. Xu et al. (2015) have examined fALFF, with controlling for IQ, and revealed that positive associations between fALFF in reading-related regions (e.g., the posterior superior temporal gyrus) and semantic reading. For arithmetic, Jolles et al. (2016) compared a group of children with mathematical difficulties (i.e., lower arithmetic abilities) and the IQ-matched control group, the first of which was characterized by higher fALFF in the intraparietal sulcus – a core region associated with number processing (Dehaene, Piazza, Pinel, & Cohen, 2003) and arithmetic (Bugden, Price, McLean, & Ansari, 2012; Dehaene, Molko, Cohen, & Wilson, 2004; Jolles et al., 2016; Menon, 2010). Regarding ReHo, no study has explored its whole-brain patterns associated with either achievement or IQ measures (but see Koyama et al., 2017 using a region of interest analysis).

We opt to use data-driven ReHo and fALFF as the primary metrics, rather than seed-based correlation analysis (SCA) that is the most common way to examine resting-state functional connectivity. This is

because ReHo and fALFF require no prior knowledge or hypotheses, unlike SCA that requires the selection of seeds (i.e., regions of interest). Investigators typically select seeds based on previous task-evoked fMRI findings in relevant cognitive domains: for example, Koyama et al. (2011) have employed multiple seeds based on meta-analysis studies of reading-related fMRI findings. This selection of seeds is investigator-specific (e.g., seed location, seed size), making SCA vulnerable to bias. In other words, SCA potentially overlooks brain regions that are not selected by investigators, as well as brain regions that are not typically activated during cognitive tasks of interest. For example, when examining auditory processing and its disorders, SCA would typically use seeds located in the primary auditory cortex based on prior task-evoked fMRI results (Bartel-Friedrich, Broecker, Knoergen, & Koesling, 2010; Talavage, Gonzalez-Castillo, & Scott, 2014); however, Pluta et al. (2014) have highlighted that ReHo in the precuneus, a core region of the default mode network (Buckner, Andrews-Hanna, & Schacter, 2008; Raichle et al., 2001), rather than the auditory cortex, is associated with auditory processing disorders. Based on above-mentioned studies, we hypothesize that the current study, which uses data-driven ReHo/fALFF, could reveal regions outside the networks that had been reported by previous fMRI studies (e.g., task-evoked fMRI, resting-state fMRI using SCA) of the achievement skills and IQ. This possibility can be even enhanced given that we simultaneously examine both achievement and IQ measures (e.g., IQ as a covariate of interest in F-tests), rather than controlling for IQ (e.g., IQ as a covariate of non-interest) – the latter is a long-standing common or standard analytic practice in the neuroimaging literature of reading and arithmetic.

2. Materials and Methods

2.1. Participants

Seventy-two young adults (28 males; mean age 21 ± 1.9 years, age range = 18-25) were selected from a larger study ($N = 159$) that primarily aimed to examine neural mechanisms of sequence learning and overnight consolidation in adolescents and young adults. The inclusion criteria used here were as follows; 1) young adults older than 25, 2) the completion of a battery of standardized tests measuring cognitive abilities, at least word reading, arithmetic, and IQ, 3) the completion of two rs-fMRI scans within the same MRI session, 4) English as the first language, and 5) no demonstration of either extreme left-handedness assessed by the Edinburgh Inventory (Oldfield, 1971) (i.e., extreme left-handedness was defined by the score falling between -13 and -24; scores range from -24 to 24, showing the most extreme left- and right-handedness, respectively), and 6) no excessive in-scanner head motion, indexed by mean frame-wise displacement (FD) (Jenkinson, Bannister, Brady, & Smith, 2002) $> 0.2\text{mm}$, in either the first or second rs-fMRI. Demographic characteristics of the participants are given in Table 1. Prior to participation, written informed consent was obtained from all participants in accordance with the guideline provided by Yale University's Institutional Review Board with the Human Investigation committee. Participants received monetary compensation for their time and effort.

2.2. Behavioral measures

One-on-one assessment using standardized measures took place in a quiet room, typically one week prior to the MRI session. Intellectual abilities were assessed using the Wechsler Abbreviated Scale of Intelligence Second Edition (WASI; Wechsler, 1999). In the analysis, we used FSIQ, comprised of both Verbal Intelligence Quotient (VIQ) and Performance Intelligence Quotient (PIQ). The Vocabulary and Similarities subtests are combined to form VIQ, whereas the combination of the Block Design and Matrix Reasoning subtests forms PIQ. The two achievement skills (reading and arithmetic) were assessed using two subtests of the Woodcock-Johnson Tests of Achievement Third Edition (WJ-III) (Woodcock, Mather, & McGrew, 2007); 1) Letter Word Identification (LW) where participants were asked to identify and sound out isolated letters and words from an increasingly difficult vocabulary list and 2) Calculation (Calc) where participants

were given a response booklet and asked to complete written mathematical/numerical operations at basic (e.g., addition, division) and higher (e.g., geometric, logarithmic) levels. Standard scores were obtained using age-based norms. Summary statistics for performance on the three measures (LW, Calc, and FSIQ) are provided in Table 1 and Figure 1.

	Mean	SD	Range ^a
Age (years)	21	1.9	18.1 – 25.1
Family Income ^b	2.9	1.5	1 – 5
Handedness ^c	12.4	1.3	-12 – 24
WJ Letter Word Identification (ss)	103.2	11.2	76 – 124
WJ Calculation (ss)	102.2	15.9	68 – 138
WASI FSIQ (ss)	107.3	15.0	75 – 145
Mean FD Rest 1	0.077	0.041	0.024 – 0.191
Mean FD Rest 2	0.079	0.038	1.25 – 0.178

Table 1. Demographic and cognitive characteristics of included participants (N = 72; 28 males) WJ = Woodcock Johnson, WASI = Wechsler Adult Intelligence Scale; FSIQ = Full-Scale IQ, ss = standard score, FD = Framewise Displacement; Rest = Resting-state fMRI

^a. “Range” describes the lowest and highest values/scores for each variable in the sample of the current study.

^b. “Family Income” score ranges from 1 (the lowest) to 5 (the highest).

^c. “Handedness” score ranges from -24 (the most extreme left-handedness) to 24 (the most extreme right-handedness).

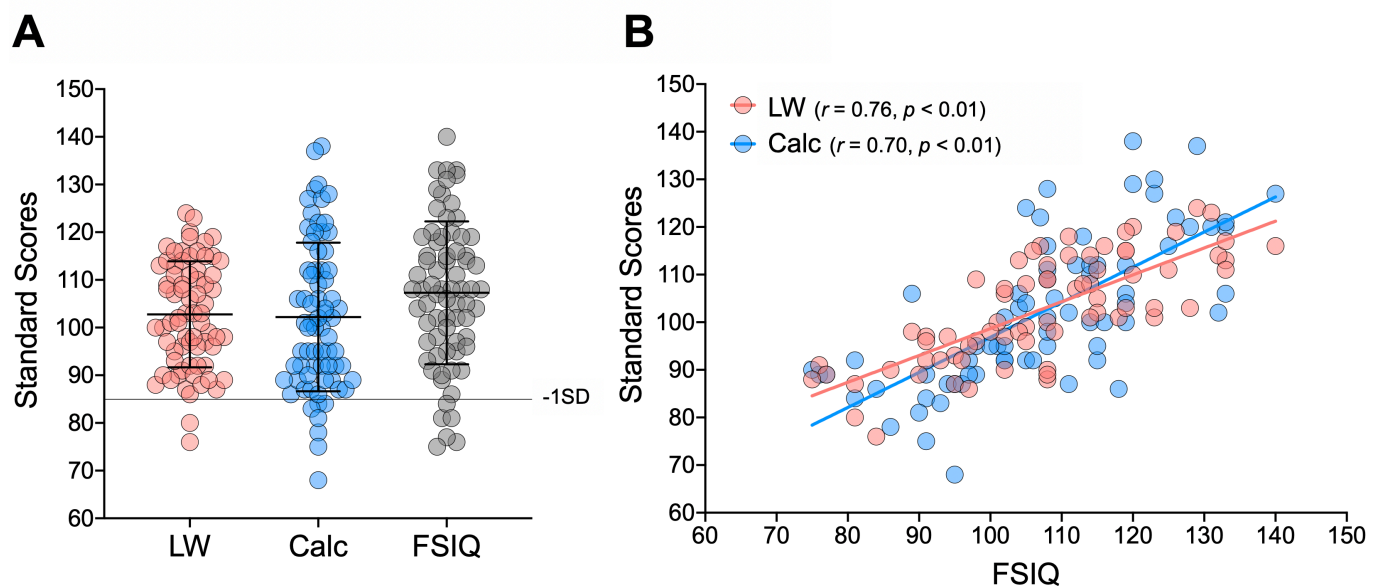


Figure 1. Performance on three cognitive measures (N = 72).

A) Mean and standard deviation of each measure; Letter Word Identification (LW), Calculation (Calc), and Full-Scale IQ (FSIQ). The horizontal line represents the standard score of 85 (-1SD).

B) Relationships between FSIQ and the two achievement skills (LW and Calc).

The current analysis included all participants without any cut-off scores on the three measures of interest, mainly for two reasons; 1) impairments with achievement skills, particularly reading, are considered to represent the lower tail of a normal distribution of the abilities (Jack M. Fletcher et al., 1994; Rodgers, 1983; Shaywitz, Escobar, Shaywitz, Fletcher, & Makuch, 1992) (But see Rutter & Yule, 1975; Stevenson, 1988) and 2) the Diagnostic and Statistical Manual of Mental Disorders Fifth Edition (DSM-5: American Psychiatric Association, 2013) has de-emphasized specific IQ scores as a diagnostic criterion of Specific Learning Disabilities and Intellectual Disabilities. Accordingly, there were some participants whose standard scores fell below the average range (lower than 85, defined as “weakness”). As shown in Figure 1.A, for FSIQ, none of our participants scored lower than 70 (two standard deviations below the average). This indicates that none of the participants included in the current study had intellectual disability. However, six participants’ scores fell into the 70-84 range, which can be classified as borderline intellectual functioning (Alloway, 2010; Wieland & Zitzman, 2016). For reading, two participants demonstrated LW weakness (i.e., standard scores lower than 85), both of whom also scored lower than 85 on FSIQ. For arithmetic, seven participants demonstrated Calc weakness, only one of whom scored lower than 85 on FSIQ. No participant scored lower than 85 on both LW and Calc, that is, no individual in our sample had comorbid weakness in reading and arithmetic.

2.3. Principal component analysis (PCA) for LW, Calc, and FSIQ

Consistent with previous findings (Gagné & St Père, 2001; Susan Dickerson Mayes et al., 2009), LW, Calc, and FSIQ were strongly correlated with each other in our sample: LW with FSIQ ($r(70) = 0.76, p < 0.01$ in Figure 1.B), Calc with FSIQ ($r(70) = 0.71, p < 0.01$ in Figure 1.B), and LW with Calc ($r(70) = 0.64, p < 0.01$). Given these strong inter-correlations among the three main measures, we performed PCA, into which standard scores from the three measures were entered. For this analysis, we used the “Scikit-learn 0.19.1” (Python library: Python 3.6.4). Extracted first principal component (PC1) scores were subsequently used in one of statistical models to gain a better understanding of how PC1, the largest shared variance among the three measures, is associated with rs-fMRI metrics.

2.4. MRI procedure

Participants received explicit instructions and were placed comfortably in the MRI scanner. To prevent excessive motion during scanning, participants’ head in the head-coil was surrounded by memory foam cushions. To protect their hearing in the MRI scanner, participants wore over-ear headphones in addition to the disposable ear plugs. The MRI session was primarily composed of an 8-min structural MRI scan, two rs-fMRI scans (5 minutes for each scan), and 5-min task-evoked fMRI scans using a serial reaction time task (SRTT). The first rs-fMRI scan was sandwiched between the first and second SRTT scans, while the second rs-fMRI scans took place immediately after the second SRTT scan. During each rs-fMRI scan, participants were instructed to remain still and keep their eyes open. The SRTT employed in the current study was described elsewhere (Hung et al., 2019). Total duration of the MRI session was approximately 45 min.

2.5. MRI data acquisition

All MRI data were collected using a Siemens TimTrio 3.0 Tesla scanner located at Yale School of Medicine’s Magnetic Resonance Research Center. Each of the two rs-fMRI scans was comprised of 150 contiguous whole-brain functional volumes acquired using an echo-planar imaging (EPI) sequence (effective TE = 30ms; TR = 2000ms; flip angle = 80°; 32 axial slices; voxel-size = 3.4×3.4×4.0mm; field of view = 220mm). A high-resolution T1-weighted structural image was also acquired using a magnetization prepared gradient echo sequence (MPRAGE, TE = 2.77ms; TR = 2530ms; TI = 1100ms; flip angle = 7°; 176 slices; acquisition voxel size = 1.0×1.0×1.0mm; field of view = 256mm). For each individual, both structural (MPRAGE) and functional (rs-fMRI) data were visually inspected for

excessive motion before data preprocessing. Via this visual inspection, 9 participants were excluded from the initial dataset (N = 159).

2.6. MRI data preprocessing

Data preprocessing was carried out using the Configurable Pipeline for the Analysis of Connectomes (CPAC version 0.3.9.1 <http://fcp-indi.github.io/docs/user/index.html>). To allow for stabilization of the magnetic field, the first three volumes within each rs-fMRI dataset were discarded. Our rs-fMRI data preprocessing included the following steps: realignment to the mean EPI image to correct for motion, grand mean-based intensity normalization (all volumes scaled by a factor of 10,000), nuisance regression, spatial normalization, temporal band-pass filtering (0.01–0.1 Hz: this application was only for ReHo because fALFF involves computation of the power across the entire frequency spectrum), and spatial smoothing. For each individual's rs-fMRI data, mean FD was calculated, and participants who showed “excessive motion” (mean FD > 0.2mm) were excluded from further analyses.

Nuisance regression was performed to control for the effects of head motion and to reduce the influence of signals of no interest. The regression model included linear and quadratic trends, the Friston-24 motion parameters (6 head motion, their values from one time point before, and the 12 corresponding squared items) (Friston, Williams, Howard, Frackowiak, & Turner, 1996), and the signals of five principal components derived from noise regions of interest (e.g., white matter, cerebral spinal fluid) using a component-based noise correction method (CompCor) (Behzadi, Restom, Liao, & Liu, 2007). Spatial normalization included the following steps: (1) anatomical-to-standard registration using Advanced Normalization Tools (ANTs; Avants et al., 2011); (2) functional-to-anatomical registration using FLIRT (Jenkinson et al., 2002) with a 6-degrees of freedom linear transformation, which was further refined using the Boundary-based Registration implemented in FSL (Greve & Fischl, 2009); and (3) functional-to-standard registration by applying the transformation matrices obtained from step (1) and (2) using ANTs. Finally, spatial smoothing was performed, via FSL, using a Gaussian kernel (Full width at half maximum = 8 mm).

2.7. ReHo and fALFF

At the individual level, ReHo and fALFF maps were generated for each of the two rs-fMRI datasets obtained, resulting in two ReHo and two fALFF maps for each participant. For ReHo and fALFF, we primarily focused on the first rs-fMRI data and restricted the use of the second rs-fMRI data only to SCA (see “2.10.”) and confirmatory analyses (see “2.11.”). This was because a potential effect of recent task performance would be lesser on the first rs-fMRI than the second rs-fMRI (i.e., participants undertook one SRTT scan prior to the first rs-fMRI, while they had two SRTT scans prior to the second rs-fMRI).

ReHo, an index of local iFC, is defined as KCC for the time series of a given voxel with those of its nearest neighboring voxels (Zang et al., 2004). KCC for each voxel was calculated voxel-wise by applying a cluster size of 26 voxels (faces, edges, and corners) according to the following formula;

$$W = \frac{\sum (R_i)^2 - n(\bar{R})^2}{\frac{1}{12}K^2(n^3 - n)}$$

where W was the KCC of given voxels, ranging from 0 to 1, R_i was the rank sum of the i th time-point; $\bar{R} = ((n + 1)K/2)$ was the mean of the R_i , K was the number of time-series within a measured cluster ($n = 27$; one given voxel plus the others inside the cluster), and n was the number of ranks (corresponding to time-points). For fALFF that measures the intensity of intrinsic functional activity (Zou et al., 2008), we computed the power spectrum at each voxel by transforming the time series to the frequency domain, and then calculated the square root of the amplitude at each frequency (which is proportional to the power at

that frequency). Finally, we divided the sum of the amplitude across the low frequencies (0.01 to 0.1 Hz) by the sum of the amplitudes across the entire frequency range. For each participant, ReHo and fALFF were computed in the native space, registered in the MNI space, and then smoothed. At the group level, we used FSL's FEAT to perform whole-brain voxel-wise general linear models, with a study-specific mask that included voxels (in MNI space) present in at least 90% of participants. Whole-brain correction for multiple comparisons was performed using Gaussian Random Field Theory ($Z > 3.1$; cluster significance of $p < 0.05$).

2.8. Group models

We performed the following three group models to examine both ReHo and fALFF; 1) LW and FISQ (i.e., standard scores) entered as covariates of interest into an F-test, 2) Calc and FSIQ (i.e., standard scores) entered as covariates of interest into an F-test, and 3) PC1 entered as the covariate of interest. In each group model, we additionally included covariates of non-interest; age, sex, mean FD, and whole-brain mean of each rs-fMRI metric (Yan, Milham 2013). For both of the first and second models, we used FSIQ although the literature has shown that VIQ correlates more strongly with reading than does PIQ, whereas PIQ correlates more strongly with arithmetic skills than does VIQ (Ashkenazi, Rosenberg-Lee, Metcalfe, Swigart, & Menon, 2013; Strauss, Sherman, & Spreen, 2006). The main rationale for using FSIQ was that the correlation between FSIQ and LW ($r(70) = 0.76, p < 0.01$) was not significantly different from the correlation between VIQ and LW ($r(70) = 0.77, p < 0.01$) ($Z = 0.29, p = 0.38$) (Lenhard & Lenhard, 2014). Similarly, the correlation between FSIQ and Calc ($r(70) = 0.71, p < 0.01$) was not significantly different from the correlation between PIQ and Calc ($r(70) = 0.67, p < 0.01$) ($Z = 0.93, p = 0.17$). For the third model, we performed PCA to detect a single factor (i.e., PC1) underlying common variation among the three measures that were significantly correlated with each other. Results of PCA showed that the PC1 accounted for 81% of the total variance (Note that principal component 2 accounted only for 12%). PC1 scores extracted for each individual were significantly ($p < 0.01$) correlated with LW ($r(70) = 0.83$), Calc ($r(70) = 0.88$), and FISQ ($r(70) = 0.94$), confirming that the PC1 is relevant to the achievement and intellectual abilities in the current sample. Resultant clusters were labelled/defined based on the Harvard-Oxford Cortical and Subcortical Structural Atlases, as well as the Colin27 Subcortical Atlas modified from the one described in Chakravarty, Bertrand, Hodge, Sadikot, and Collins (2006).

2.9. Brain-behavior relationships

We extracted the mean ReHo/fALFF value across all voxels within each significant F-test result/cluster from each participant, and then calculated R -squared and p values that represent brain-behavior relationships. As F-test results are non-directional (i.e., positive or negative), we made post-hoc visualization by plotting the mean ReHo/fALFF values extracted from each significant result/cluster as a function of the achievement skills and FSIQ. In addition, ReHo and fALFF values extracted from each significant cluster identified by the model with PC1 (i.e., positively and/or negatively associated with PC1 scores) were plotted as a function of the achievement skills and FSIQ.

2.10. Seed-based correlation analysis (SCA)

We selected seed regions based on significant results from the whole-brain ReHo/fALFF analyses with the first rs-fMRI data. Importantly, we used the second rs-fMRI data for post-hoc SCA in order to avoid "double dipping" in our fMRI analysis (Kriegeskorte, Simmons, Bellgowan, & Baker, 2009). Our SCA aimed to explore whether and how global or longer-distance iFC of given seeds (i.e., significant results from local rs-fMRI metrics) would be associated with LW, Calc, and/or FSIQ. At the individual level, the average time series across the voxels within each seed was extracted and correlated with all voxels within the group-specific mask, using Pearson's correlation. Correlation values were transformed to Fisher Z scores to provide a whole-brain iFC map of each seed for each participant. At the group level, we employed the

above-mentioned three models. The resultant iFC maps were corrected for multiple comparisons using Gaussian Random Field Theory ($Z > 3.1$; cluster significance: $p < 0.05$).

2.11. Confirmatory region of interest (ROI) analysis using the second rs-fMRI data

We applied ROI analysis to the second rs-fMRI data collected from the same sample, and then examined if results (i.e., brain-behavior relationships) from the whole-brain analysis using the first rs-fMRI data were significant in the second rs-fMRI data. This confirmatory ROI analysis aimed to test intra-individual reliability of brain-behavior relationships. For this purpose, we extracted the mean values of the second rs-fMRI ReHo/fALFF from each of significant clusters detected in the analyses using the first rs-fMRI data. Subsequently, we calculated R -squared and p values that represent brain-behavior relationships in the second rs-fMRI data.

3. Results

3.1. ReHo results from the first rs-fMRI

Table 2 and Figure 2 summarize significant ReHo results from the three models. Both F-tests (i.e., the first and second models) highlighted the thalamus with the peak voxels located in the left pulvinar (the “LW-Thalamus” cluster for the F-test with LW & FSIQ; the “Calc-Thalamus” cluster for the F-test with Calc & FSIQ). Additionally, the PC1 scores were negatively associated with the thalamus (the “PC1-Thalamus” cluster).

Contrast	Brain Region	Peak MNI Coordinates	# of Voxels
LW & FSIQ (F-test)	Thalamus/Left Pulvinar	-12 -27 -3	171
Calc & FSIQ (F-test)	Thalamus/Left Pulvinar	-12 -27 -6	144
PC1 (Negative correlation)	Thalamus/Left Pulvinar	-12 -27 -3	168

Table 2. Significant ReHo results from the three models.

LW = Letter Word Identification, Calc = Calculation, FSIQ = Full-Scale IQ, PC1 = Principal Component 1

3.2. ReHo-behavior relationships

We plotted the mean ReHo values (i.e., the first rs-fMRI data) extracted from each cluster as a function of the corresponding cognitive measures (e.g., ReHo values in the LW-Thalamus cluster as a function of LW and FSIQ), as shown in the upper and middle scatter plots in Figure 2. First, the ReHo values from the LW-Thalamus cluster were negatively associated with LW ($R^2 = 0.20$, $p < 0.001$) and FSIQ ($R^2 = 0.35$, $p < 0.001$); these two associations, with one variable in common (i.e., ReHo in the LW-Thalamus), were significantly different ($Z = 2.1$, $p < 0.05$); more strongly associated with FSIQ than LW. Second, the ReHo values from the Calc-Thalamus cluster were negatively associated with Calc ($R^2 = 0.32$, $p < 0.001$) and FSIQ ($R^2 = 0.30$, $p < 0.001$); these two associations, with one variable in common (i.e., ReHo in the Calc-Thalamus), were not significantly different ($Z = 0.27$, $p = 0.78$). In addition, we visualized relationships for the PC1 result by plotting the ReHo values from the PC1-Thalamus cluster as a function of each measure (LW, Calc, and FSIQ). There were significant negative associations for all three measures; LW ($R^2 = 0.21$, $p < 0.001$), Calc ($R^2 = 0.33$, $p < 0.001$) and FSIQ ($R^2 = 0.30$, $p < 0.001$) (The bottom scatter plot in Figure 2). These three associations, with one variable in common (i.e., ReHo in the PC1-Thalamus), were not significantly different between one another ($Z = 1.14$, $p = 0.15$ for LW and FSIQ; $Z = 0.41$, $p = 0.68$ for Calc and FSIQ; $Z = 1.43$, $p = 0.15$ for LW and Calc).

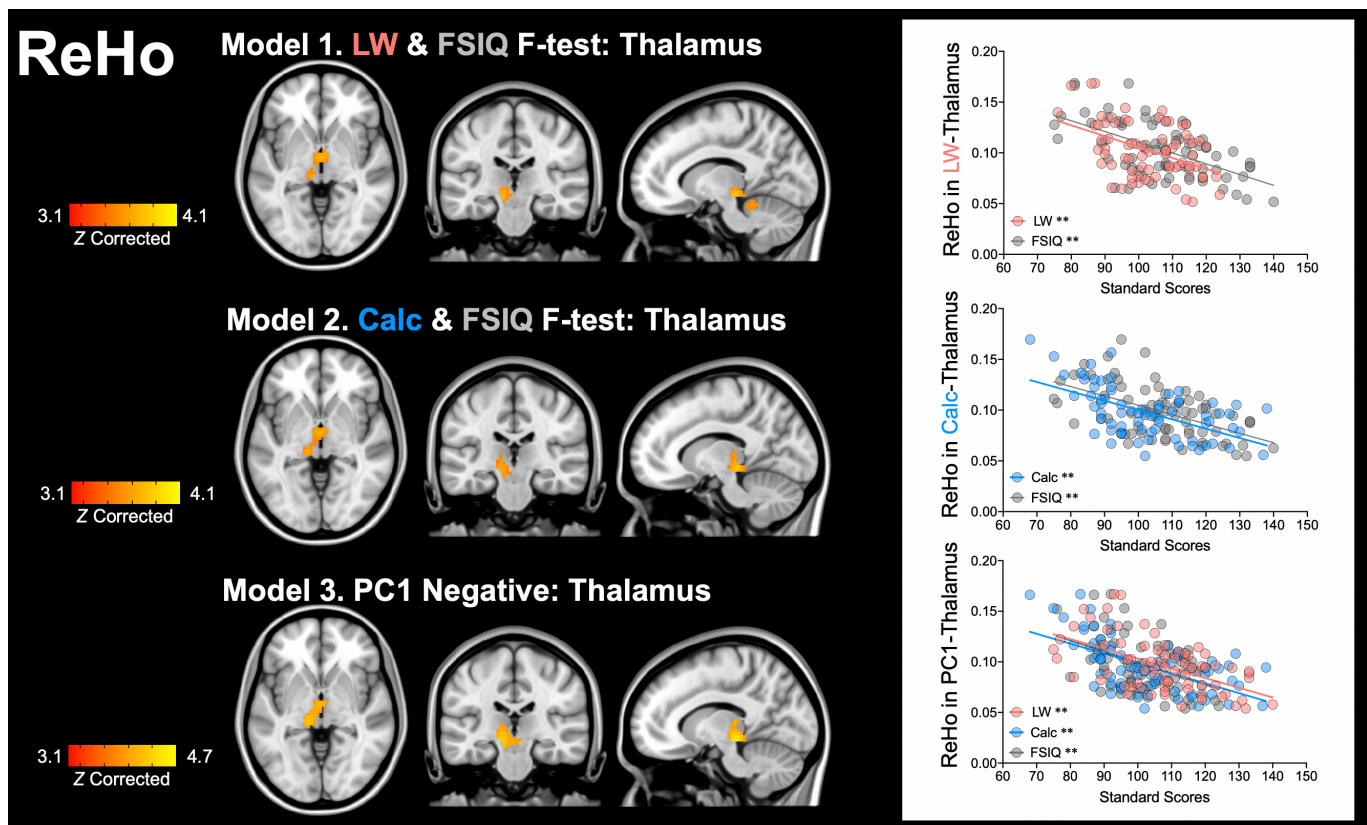


Figure 2. Significant ReHo results from the three models.

Results from all the models, mapped on the MNI coordinates ($x = -12$, $y = -27$, $z = -3$), highlight the thalamus, centered in the left pulvinar. Model 1 performs an F-test with two covariates of interests – Letter Word Identification (LW) and Full-Scale IQ (FSIQ). Model 2 performs an F-test with Calculation (Calc) and FSIQ. In Model 3, the first principal component (PC1) among three measures (LW, Calc, and FSIQ) is entered as the covariate of interest. In scatter plots on the right, mean ReHo values extracted from the respective thalamus cluster are plotted as a function of LW, Calc and FSIQ. Images are displayed according to neurological convention (left is left). ** $p < 0.001$

3.3. Common thalamus and ReHo results from the second rs-fMRI

As ReHo results from all the three models highlighted the thalamus, we identified the overlap among the three thalamus clusters and then created the “Common-Thalamus” cluster, which was located dominantly in the left hemisphere (the image on the left in Figure 3). In the first rs-fMRI data, ReHo values from the Common-Thalamus cluster was significantly associated with LW ($R^2 = 0.13$, $p < 0.01$), Calc ($R^2 = 0.21$, $p < 0.001$), and FSIQ ($R^2 = 0.22$, $p < 0.001$). These three associations, with one variable in common (i.e., ReHo in the Common-Thalamus), were not significantly different from one another ($Z = 1.47$, $p = 0.15$ for LW and FSIQ; $Z = 0.25$, $p = 0.80$ for Calc and FSIQ; $Z = 1.09$, $p = 0.27$ for LW and Calc). This pattern (i.e., no significant differences in the associations) was seen at the thalamus cluster derived from the PC1 – the largest shared variance among the three measures.

To test reliability of our thalamus results, we performed confirmatory ROI analyses, using the second rs-fMRI data, for four thalamus clusters identified by the whole-brain analysis using the first rs-fMRI data: 1) LW-Thalamus, 2) Calc-Thalamus, 3) PC1-Thalamus, and 4) Common-Thalamus. Results showed significant ($p < 0.001$) ReHo-behavior relationships in the second rs-fMRI data: 1) the LW-Thalamus cluster with LW ($R^2 = 0.19$) and FSIQ ($R^2 = 0.24$), 2) the Calc-Thalamus cluster with Calc ($R^2 = 0.20$) and FSIQ ($R^2 = 0.29$), 3) the PC1-Thalamus cluster with LW ($R^2 = 0.19$), Calc ($R^2 = 0.24$), and FSIQ ($R^2 = 0.30$), and 4) the Common-Thalamus cluster with LW ($R^2 = 0.16$), Calc ($R^2 = 0.20$) and FSIQ ($R^2 = 0.21$).

Taken together, the results from both the first and second rs-fMRI datasets suggest that higher ReHo in the thalamus is reliably associated with lower LW, Calc, and FSIQ.

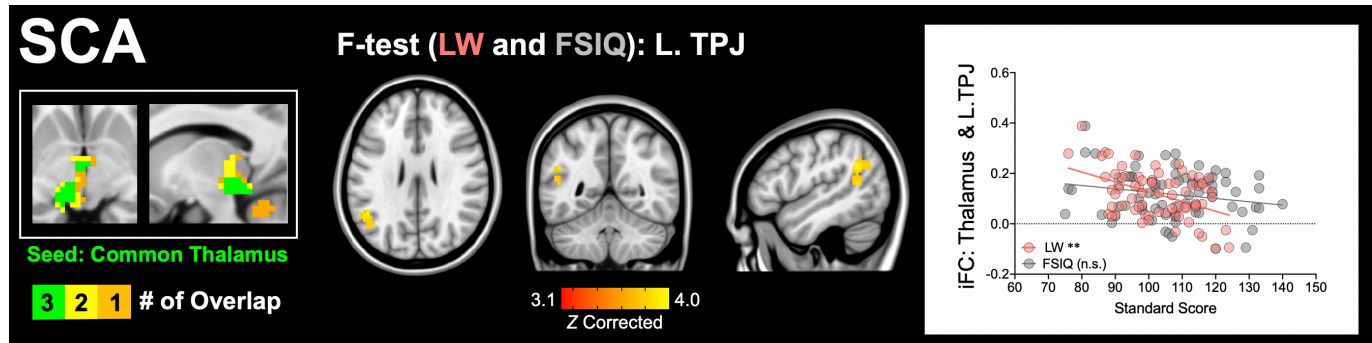


Figure 3. Common-Thalamus cluster and significant seed-based correlation analysis (SCA) results.

The overlap among the three thalamus clusters is highlighted in green (the left image). The result from an F-test with Letter Word Identification (LW) and Full-Scale IQ (FSIQ), mapped on the MNI coordinates ($x=-46, y=-52, z=26$), highlights intrinsic functional connectivity (iFC) between the Common-Thalamus cluster and left temporoparietal junction (L.TPJ). In the scatter plot on the right, iFC values extracted from the thalamus-L.TPJ connectivity are plotted as a function of LW and FSIQ. Images are displayed according to neurological convention (left is left). ** $p < 0.001$, n.s. = not significant

3.4. fALFF results from the first and second rs-fMRI

As shown in Figure 4, the F-test with LW and FSIQ highlighted the left superior parietal lobule (L.SPL: peak voxel at $x = -42, y = -54, z = 51$ in MNI). The fALFF values extracted from the L.SPL cluster exhibited a significant positive association with LW ($R^2 = 0.25, p < 0.01$) and FSIQ ($R^2 = 0.06, p < 0.05$); these two associations, with one variable in common (i.e., fALFF in L.SPL), were significantly different ($Z = 3.55, p < 0.001$); more strongly associated with LW than FSIQ. These results remained significant in the second rs-fMRI ($R^2 = 0.24, p < 0.001$ for LW; $R^2 = 0.09, p < 0.05$ for FSIQ). There was no significant result from either the F-test with Calc and FSIQ or PC1.

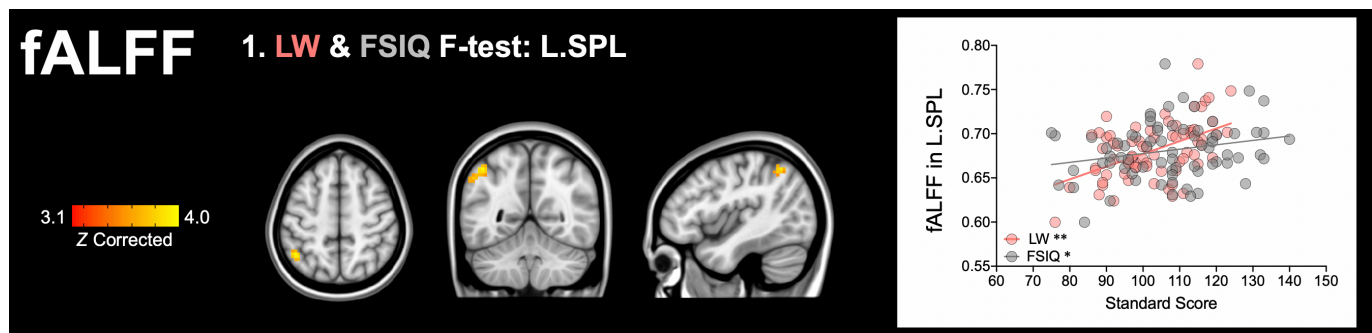


Figure 4. Significant fALFF result.

The result from an F-test with Letter Word Identification (LW) and Full-Scale IQ (FSIQ), mapped on the MNI coordinates ($x = -42, y = -54, z = 51$), highlights the left superior parietal lobule (L.SPL). In the scatter plot on the right, fALFF values extracted from the L.SPL cluster are plotted as a function of LW and FSIQ. Images are displayed according to neurological convention (left is left). ** $p < 0.001$, * $p < 0.05$

3.5. SCA with the common thalamus cluster

Across the three models (i.e., two F-tests and PC1), ReHo results highlighted the thalamus, but there was no such a common region identified by the fALFF analysis. Therefore, we used only the Common-Thalamus cluster as the seeds in post-hoc SCA. As shown in Figure 3, the F-test with LW and FSIQ highlighted a significant cluster with the peak voxel at $x = -46$, $y = -52$, $z = 26$ (MNI), which can be considered as centered in left angular gyrus based on the Harvard-Oxford Cortical Structural Atlas (i.e., the maximum probability of 0.25). However, we labelled it as the left temporoparietal junction (L.TPJ) because it 1) included both parietal and superior temporal regions, and 2) spatially corresponded to a subregion of the left temporoparietal junction identified by rs-fMRI parcellation analysis (Igelstrom, Webb, & Graziano, 2015). Note that the closest similarity between the given two regions/clusters was defined by the smallest Euclidean distance ($d = 10.4$) calculated using the voxel peak MNI coordinates. The post-hoc analysis and visualization revealed a significant negative relationship between the thalamus-L.TPJ iFC and LW ($R^2 = 0.21$, $p < 0.001$), that is, the higher the iFC, the worse the reading. This negative iFC-behavior relationship was not significant for FSIQ ($R^2 = 0.04$, $p = 0.08$); the two associations, with one variable in common (i.e., iFC), were significantly different ($Z = 3.27$, $p < 0.001$).

We found no significant SCA results from either the model with F-test with Calc/FSIQ or the PC1 model. This absence of significant SCA results was somewhat surprising given that ReHo in the Common-Thalamus cluster was significantly associated with all the three measures (LW, Calc and FSIQ). Thus, we performed post-hoc analyses to examine whether and the degree of which iFC values in the thalamus-L.TPJ connectivity would be associated with Calc and FSIQ scores. We found a significant connectivity-behavior association only with Calc ($R^2 = 0.10$, $p < 0.01$) but not with FSIQ ($R^2 = 0.04$, $p = 0.08$).

4. Discussion

The current study simultaneously examined the achievement (reading, arithmetic) and IQ measures in young adults, aiming to identify MRI correlates of their common factors. For this aim, we used F-tests, into each of which an achievement measure and FSIQ were entered, as well as investigating the effect of PC1 among the three measures (reading, arithmetic, and FSIQ). The main finding, which was reliable across these analytic models, is that lower ReHo in the thalamus (the peak voxel in the left pulvinar) was associated with higher performance on each of the three measures. This indicates that the thalamus represents a neural correlate of the shared factor among reading, arithmetic, and FSIQ. This ReHo result centered to the thalamus is partially consistent with our hypothesis that our approach could identify regions outside functional brain networks that had been frequently reported by prior fMRI studies of reading, arithmetic, and IQ. In the literature, the thalamus may not be a core region implied for reading, arithmetic, or IQ, but the neuroscientific community has increasingly recognized potentially important role of the thalamus in learning (T. Rose & Bonhoeffer, 2018) and language processes (Klostermann, Krugel, & Ehlen, 2013; Llano, 2013), particularly reading (Achal, Hoeft, & Bray, 2016; Diaz, Hintz, Kiebel, & von Kriegstein, 2012; Gaab, Gabrieli, Deutsch, Tallal, & Temple, 2007; Pugh et al., 2013; Stein, 2018a). We discuss more details and implications of these findings, as well as other findings, in the following sections.

4.1. ReHo in thalamus/pulvinar

ReHo results from all the three models suggest that higher ReHo in the thalamus is associated with lower performance on word reading, arithmetic, and FSIQ measures. This pattern of negative brain-behavior relationships is consistent with previous rs-fMRI studies, which have reported that higher ReHo in subcortical regions (and higher mean ReHo in the entire brain) is associated with worse outcomes, such as lower abilities (Dajani & Uddin, 2016; S. Kuhn et al., 2014; Zhao et al., 2019). In particular, Zhao et al.

(2019) have demonstrated that higher ReHo in the thalamus was associated with severer symptoms in schizophrenic patients. This finding, together with our ReHo finding, indicates that higher ReHo in the thalamus may index lower functions, possibly across different behavioral domains. Although ReHo is considered to index local functional coupling and reflects the degree of local functional specialization (Jiang et al., 2015; Jiang & Zuo, 2016), the underlying mechanism of ReHo-behavior relationships remains largely unknown. In the next paragraphs, we will debate a possible scenario that could explain the observed negative ReHo-behavior relationships (i.e., the higher the ReHo, the worse the performance).

The brain adaptively reconfigures or changes its functional connectivity between globally distributed regions/networks in response to task demands (Cohen & D'Esposito, 2016; Cole, Bassett, Power, Braver, & Petersen, 2014; Hearne, Cocchi, Zalesky, & Mattingley, 2017; Krienen, Yeo, & Buckner, 2014). Yet, functional connectivity patterns detected at rest correspond well with co-activation patterns during tasks; only ~40% of connections change (Cole et al., 2014; Krienen et al., 2014; S. M. Smith et al., 2009). Such relatively small but reliable changes in functional network reconfiguration between rest and task seem to contribute to individual differences in behavior. For example, Schulz and Cole (2016) have demonstrated that smaller differences in functional connectivity between rest and task, which reflect more efficient reconfiguration (i.e., less energy required for the change/shift), are associated with higher performance on a variety of cognitive tasks (e.g., language, reasoning). This can be interpreted in such that, in high-performing individuals, their functional connectivity patterns during rest are “preconfigured” similar to those during tasks, and that greater similarity may facilitate more efficient or less energy-costing reconfiguration in the presence of task demand.

Such reconfiguration efficiency or optimized preconfiguration at rest is likely to vary significantly across individuals in the thalamus that exhibits the most notable differences between functional connectivity at rest (i.e., temporal correlations) and on task (i.e., co-activation patterns) (Di, Gohel, Kim, & Biswal, 2013). Specifically, the thalamus is more globally connected during task performance, but is more locally connected at rest (Di et al., 2013). Based on these observations and the aforementioned finding (Schultz & Cole, 2016), we consider that higher ReHo in the thalamus at rest may reflect less optimized/efficient local preconfiguration (i.e., more energy-costing reconfiguration in the presence of a task), which in turn is associated with lower performance. In other words, individuals whose local intrinsic functional connectivity patterns of the thalamus are more similar between rest and tasks are likely to perform better on the achievement and IQ measures. Further studies are needed to test this possibility by analyzing fMRI data collected during both rest and relevant tasks (e.g., word reading) in the same individuals.

A question arising here is the common role of the thalamus among reading, arithmetic, and IQ measures. Recent efforts in the rs-fMRI field have highlighted the thalamus as an integrative hub that is connected with multiple cortical networks (Garrett, Epp, Perry, & Lindenberger, 2018; Greene et al., 2019; Hwang, Bertolero, Liu, & D'Esposito, 2017; Seitzman et al., 2020). As such, meta-analysis of a large database of fMRI activations has revealed that the thalamus is involved in multiple cognitive functions (Hwang 2017). Activation of the thalamus has been sometimes (but not always) reported during tasks that require higher cognitive processing, such as language (Crosson, 2013; Klostermann et al., 2013; Llano, 2013), reading (Gaab et al., 2007; Houde, Rossi, Lubin, & Joliot, 2010; Maisog, Einbinder, Flowers, Turkeltaub, & Eden, 2008; Martin, Schurz, Kronbichler, & Richlan, 2015; Pugh et al., 2008; Pugh et al., 2013), arithmetic (Arsalidou & Taylor, 2011), and intelligence/reasoning (Fangmeier, Knauff, Ruff, & Sloutsky, 2006). Although the thalamus is not typically considered as a core region for reading, arithmetic or intellectual abilities, thalamic abnormalities (i.e., geniculate nuclei) have been noted in individuals with reading disorders (Diaz et al., 2012; Stein, 2018b), as well as those with ADHD (Ivanov et al., 2010; X. Li et al., 2012) that is often comorbid with learning difficulties in reading and/or arithmetic (S. D. Mayes, Calhoun, & Crowell, 2000; Wadsworth, DeFries, Willcutt, Pennington, & Olson, 2015).

Our ReHo results emphasize the left posterior thalamus, corresponding to the location of the left pulvinar (the peak voxels from the three models). Thus, our discussion here focuses on the role of pulvinar and its possible contribution to reading, arithmetic, and intellectual skills. The pulvinar has been most intensively examined in its relation with selective attention (Fischer & Whitney, 2012; Halassa & Kastner, 2017; Kastner et al., 2004; Smith, Cotton, Bruno, & Moutsiana, 2009) – the ability to filter/suppress distracting information and enhance relevant information for goal-oriented task performance. Selective attention is not only a survival instinct across all species (Krauzlis, Bogadhi, Herman, & Bollimunta, 2018) but also implicated in higher cognitive abilities unique to humans, including phonological processing (Yoncheva, Maurer, Zevin, & McCandliss, 2014), reading (Commodari, 2017), and intelligence (Kirk, Gray, Ellis, Taffe, & Cornish, 2016; Unsworth, Fukuda, Awh, & Vogel, 2014). The importance of selective attention in reading, arithmetic, and language is extensively reviewed and discussed elsewhere (Stevens & Bavelier, 2012). In particular, close relationships between selective attention and reading (e.g., visual word recognition) has been well-documented (Commodari, 2017; Graboi & Lisman, 2003). For example, during visual word recognition, selective attention enables a reader to compare the visual/orthographic representation of a written word to his/her mental lexicon (i.e., a list of many relevant and irrelevant words stored in memory) until the match is found. Without selective attention, book and web pages would be merely full of visual clutter. Importantly, selective attention occurs in the auditory (Pugh et al., 1996; von Kriegstein, Eger, Kleinschmidt, & Giraud, 2003) and semantic domains (Rogalsky & Hickok, 2009), as well as integrated domains (i.e., audiovisual semantic) (Y. Li et al., 2016). As such, selective attention in the auditory (or auditory semantic) domain, rather than the visual domain, may be more relevant to FSIQ given that some subtests forming FSIQ are orally presented (e.g., the Vocabulary and Similarities subtests).

Returning to neurobiological mechanisms of selective attention, which requires the involvement of multiple functions in a coordinate fashion and efficient cortico-cortical communications (Yantis, 2008), the pulvinar has been suggested to play a role in selective attention by regulating cortical synchrony (Saalman & Kastner, 2011; Saalman, Pinsk, Wang, Li, & Kastner, 2012; Zhou, Schafer, & Desimone, 2016). Such cortical regulation of the pulvinar is most likely to be achieved by its extensive interconnection with cortical regions (Greene et al., 2019; Hwang et al., 2017; Seitzman et al., 2020). Although the pulvinar has been prominently examined and discussed in the visual domain (Kaas & Lyon, 2007; Zhou et al., 2016), emerging evidence has suggested its involvement in auditory attention (e.g., speech segmentation) (Dietrich, Hertrich, & Ackermann, 2013, 2015; Erb, Henry, Eisner, & Obleser, 2012). Hence, selective attention, regulated by the pulvinar, is likely to be a common latent factor associated with the reading, arithmetic, and IQ measures. Here, we postulate that higher ReHo in the thalamus (centered in the left pulvinar), reflecting less optimized local preconfiguration at rest, may be associated with lower selective attention across multiple domains, which may exert negative impact on the achievement and IQ performance. This view could, in turn, contribute to the debate as to why some (but not all) individuals with impaired selective attention, such as ADHD (Brodeur & Pond, 2001; Mueller, Hong, Shepard, & Moore, 2017), perform poorly on the achievement and IQ tests (Frazier, Demaree, & Youngstrom, 2004). Validation of this hypothesis deserves further investigation, particularly given that learning difficulties with reading/arithmetic and attention deficits are often understudied or underestimated in people with borderline intellectual functioning (Al-Khudairi, Perera, Solomou, & Courtenay, 2019; Baglio et al., 2014; Di Blasi, Buono, Cantagallo, Di Filippo, & Zoccolotti, 2019; Jansen, De Lange, & Van der Molen, 2013; E. Rose, Bramham, Young, Paliokostas, & Xenitidis, 2009); such individuals are not often granted eligibility to access specialized healthcare or social/educational services they might need (Martinez & Quirk, 2009).

It is worth mentioning that ReHo-behavior relationships may be true only in adults given the reported difference in the amplitude of whole-brain ReHo between children and adults (i.e., lower in adults than children) (Dajani & Uddin, 2016), which is possibly due to pruning of local connections (Jiang et al., 2015).

Furthermore, developmental changes have been observed in thalamocortical iFC (Fair et al., 2010) and its relationships with reading (e.g., negatively and positively associated with reading in adults and children, respectively) (Koyama et al., 2011); these prior findings implicate possible child-adult differences in patterns of ReHo in the thalamus. Furthermore, given that the thalamus is vulnerable following preterm birth (Ball et al., 2012; Ball et al., 2013; Smyser et al., 2010; Toulmin et al., 2015; Volpe, 2009) and that smaller thalamic volumes at term-equivalent age predict childhood neurodevelopmental deficits (in reading, arithmetic, and IQ) in preterm-born individuals (Loh et al., 2017), early alterations in thalamic functional connectivity may also indicate higher risk for later neurodevelopmental disorders, including learning and intellectual disabilities. It is of great interest to explore the nexus between the development of the thalamus/pulvinar and neurodevelopmental outcomes; this effort would potentially add further evidence for brain mechanisms underlying the comorbidity in reading and arithmetic difficulties (Skeide, Evans, Mei, Abrams, & Menon, 2018; Willcutt et al., 2013), which could co-occur with cognitive weakness in domain-general skills, such as attention, working memory, and speed processing (Gathercole et al., 2016; Willcutt et al., 2013) – these cognitive components are often embedded in IQ tests.

4.2. *fALFF* in *L.SPL*

The result of the F-test with LW and FSIQ measures suggests that higher *fALFF* in *L.SPL* characterizes better word reading and IQ. This positive relationship between local intrinsic activity and reading/IQ is in line with prior task-evoked activation seen in *L.SPL* during reading (Martin et al., 2015; Meyler, Keller, Cherkassky, Gabrieli, & Just, 2008; Peyrin, Demonet, N'Guyen-Morel, Le Bas, & Valdois, 2011; Reilhac, Peyrin, Demonet, & Valdois, 2013; Vigneau, Jobard, Mazoyer, & Tzourio-Mazoyer, 2005) and intelligence/reasoning tasks (Fangmeier et al., 2006; Goel & Dolan, 2001; Jung & Haier, 2007; Wendelken, 2014). This finding might provide an additional support for evidence that local intrinsic activity, represented by low-frequency oscillations during rs-fMRI, predicts local task activation and relevant behaviors (Kalcher et al., 2013; Mennes et al., 2011). It is well-documented that *SPL* is a highly heterogeneous region in its patterns of functional connectivity and activation (Caspers & Zilles, 2018; Mars et al., 2011; Scheperjans, Eickhoff, et al., 2008; Wang et al., 2015). Wang et al. (2015) have used a connectivity-based parcellation scheme and detected multiple subregions of *SPL*, one of which is similar to the cytoarchitectonically defined area 7A (Scheperjans, Eickhoff, et al., 2008; Scheperjans, Hermann, et al., 2008) and appears to correspond to the *L.SPL* cluster identified in this study. This *SPL* subregion, particularly in the left hemisphere, has been found to be associated with visuospatial attention, reading, and reasoning (Wang et al., 2015), indicating that the involvement of *L.SPL* in reading and reasoning may be mediated by visuospatial attention.

SPL is part of the dorsal attention network (Corbetta & Shulman, 2002; Shomstein, 2012; Vossel, Geng, & Fink, 2014), which has a significant overlap with task-positive networks (Dosenbach, Fair, Cohen, Schlaggar, & Petersen, 2008; Dosenbach et al., 2007; Dosenbach et al., 2006; Fox, Corbetta, Snyder, Vincent, & Raichle, 2006), including the frontoparietal network. More recently, Dixon et al. (2018) have differentiated the frontoparietal network in two subsystems, one of which coactivates and is more strongly connected with the dorsal attention network, including *SPL*. This attention-related subsystem is contrasted to another subsystem that is prominently connected with distributed components of the default mode network. These authors have further explored associations between each subsystem and different cognitive processes, finding that “reading” exhibits a strong positive association with the attention-related subsystem (Dixon et al., 2018). Although some processes (e.g., “working memory”), which can be components measured by IQ tests, are also strongly associated with the attention-related system, these associations are not as strong as the “reading” association. These association patterns are consistent with our finding that the correlation between *fALFF* in *L.SPL* and FSIQ were significant but weaker than that for reading. Taken together, our *fALFF* result suggests that higher local intrinsic activity in *L.SPL* indexes higher reading and IQ, most likely due to the *L.SPL*'s involvement in visuospatial attentional control (Corbetta & Shulman,

2002; Wang et al., 2015). This assumption needs to be tested in future research in which aspects of attention (e.g., sustained attention, selective attention) are linked to fALFF in L.SPL (and other attention-related regions).

To date, neurobiological mechanisms of fALFF may be the least understood among rs-fMRI metrics, but recent efforts have revealed that fALFF and ReHo exhibit high correlations with each other (Nugent, Martinez, D'Alfonso, Zarate, & Theodore, 2015; Yuan et al., 2013) and with cerebral blood flow (Z. Li, Zhu, Childress, Detre, & Wang, 2012) at the whole-brain level. Nevertheless, these two local rs-fMRI metrics do not always yield similar or consistent brain regions (and their relationships with behavior in the same populations) (Y. Xu et al., 2015; Yang et al., 2015). This indicates that fALFF and ReHo can provide complementary information about local intrinsic properties, and this is the case in the present study in such that ReHo and fALFF revealed different regions associated with reading (i.e., the thalamus for ReHo and L.SPL for fALFF), as well as different brain-behavior relationships (i.e., positive for ReHo in the thalamus but negative for fALFF in L.SPL).

4.3. SCA with the common-thalamus cluster

We found that iFC between the Common-Thalamus cluster and L.TPJ exhibited a significant negative association with LW. That is, individuals with weaker positive correlations (and stronger negative correlations) between these subcortical-cortical regions tended to perform better on the reading measure. This SCA finding is largely consistent with prior rs-fMRI work showing that connections between subcortical (i.e., caudate, thalamus) and left temporoparietal/parietal regions are negatively associated with reading skills in adults (Achal et al., 2016; Koyama et al., 2011). L.TPJ has been widely reported in reading research, particularly due to its hypoactivation in individuals with reading difficulties (Maisog et al., 2008; Martin et al., 2015; Richlan, Kronbichler, & Wimmer, 2009). However, L.TPJ is not specific to reading but is involved in the number of different cognitive functions (Bzdok et al., 2016; Igelstrom & Graziano, 2017), including social reasoning (Samson, et al. 2004) that relies on the default mode network (Buckner, et al. 2008; Li, et al. 2014).

The term “TPJ” is an abstract label that has been commonly used in the neuroimaging literature. Notably, there are differences in labeling the location of TPJ across studies (e.g., different labels describe the same or similar location). As such, Church, Coalson, Lugar, Petersen, and Schlaggar (2008) have reported that, during reading tasks, adult readers show no activation in the left angular gyrus, which is within close proximity of (or overlap with) our L.TPJ cluster: the Euclidean distance = 10.8 based on the peak voxel MNI coordinates. This task-evoked fMRI finding implies that our SCA result of the thalamus-L.TPJ iFC cannot be explained by coactivation patterns (Liu, Zhang, Chang, & Duyn, 2018; S. M. Smith et al., 2009) during reading. Instead, it is possibly linked with the default mode network considering that the L.TPJ cluster identified in this study resembles most closely one of the L.TPJ subdivisions reported in Igelstrom et al. (2015), which is strongly connected and coactivated with the default mode network. Given that stronger negative correlations between task-positive and default mode networks during rest can reflect higher cognitive efficiency (Kelly, Uddin, Biswal, Castellanos, & Milham, 2008), stronger negative iFC (and weaker positive iFC) between the thalamus (i.e., a task-positive region) and our L.TPJ cluster (i.e., a L.TPJ subdivision as part of the default mode network) may reflect improved cognitive efficiency; this is likely to facilitate automaticity, which is an important component of skilled reading (M. R. Kuhn, Schwanenflugel, & Meisinger, 2010; Logan, 1978; Wolf, 2018).

Finally, it is somewhat surprising that the F-test with Calc and FSIQ yielded no significant result in SCA, despite a fact that the thalamus cluster used in SCA was commonly associated with the three measures in the ReHo analysis. However, post-hoc analyses revealed that iFC values extracted from the thalamus-L.TPJ connectivity were significantly associated with arithmetic scores (but not FSIQ). This may imply that there

was a possible association between the thalamus-L.TPJ iFC and arithmetic, but it failed to survive correction for multiple comparisons when examining at the whole-brain level (i.e., fMRI data comprising numerous voxels). This result from the post-hoc analysis encourages a future research to have a larger sample size and perform a whole-brain analysis, testing if the thalamus-L.TPJ connectivity could be commonly associated with reading and arithmetic. In addition, given that coactivation patterns of the pulvinar are different according to task types (Barron, Eickhoff, Clos, & Fox, 2015), it will be of great interest to investigate global/long-distance functional connectivity of the thalamus/pulvinar during different tasks, including reading, arithmetic, and intellectual tasks.

5. Limitations

There are several limitations in the current study. The most evident was a lack of task-evoked fMRI data in the domain of reading, arithmetic, and IQ/reasoning, which restricted direct comparisons of ReHo-behavior relationships during rest and task. Our primary ReHo finding sits in the thalamus, which is the region exhibiting the most dynamic differences in functional network configuration between rest and task (i.e., more globally connected during task than at rest). Thus, examination of both intrinsic and task-evoked functional connectivity of the thalamus in the same sample could enable us to illustrate comprehensive connectivity-behavior relationships (e.g., a possibility that global/long-distance task-evoked connectivity of the thalamus is positively associated with cognitive abilities). Similarly, although we attributed the ReHo result in the thalamus to the common involvement of selective attention in the achievement and IQ measure, we administered no selective attention skills to be linked to the ReHo result in the thalamus. Given that results from both ReHo and fALFF (i.e., L.SPL in the dorsal attention network) highlight regions involved in attention, which is a prerequisite of learning (Merkley, Matusz, & Scerif, 2018; Reynolds & Besner, 2006; Shaywitz & Shaywitz, 2008), future research studies should consider the measurement of different aspects of attention (e.g., sustained attention, selective attention) and relate them to brain's functional profiles that characterize reading, arithmetic, and/or IQ. Finally, our results should be interpreted with caution when studying the developing brain (i.e., children); activation and connectivity patterns of the regions identified in the current study are known to be developmentally sensitive and differentially associated with children and adults when reading (Church et al., 2008; Koyama et al., 2011) and arithmetic (Rivera, Reiss, Eckert, & Menon, 2005) abilities are examined.

6. Conclusions

We simultaneously examine both achievement (reading, arithmetic) and IQ measures, using rs-fMRI metrics that characterize local intrinsic functional properties. The main finding highlights that ReHo (i.e., local functional connectivity) in the thalamus, particularly the left pulvinar implied in selective attention, is a common neural correlate or convergence site for cognitive variation in reading, arithmetic, and IQ measures. Specifically, the higher the ReHo, the lower the performance on all the three measures. Considering that the thalamus is more locally connected at rest than during tasks, negative ReHo-behavior relationships indicate that higher ReHo in the thalamus at rest may reflect less optimized/efficient local preconfiguration (i.e., more energy-costing reconfiguration in the presence of a task), which in turn is associated with lower performance on each dimension. In addition, the fALFF result suggests that higher local intrinsic functional activity in the left superior parietal lobule (in the dorsal attention network) characterizes better reading and IQ performance. To summarize, our findings provide additional support to claims that attentional components are critical for achievement skills and IQ. In particular, the ReHo finding that the thalamus is a common locus for the three measures could provide a new perspective on brain

mechanisms underlying a type of comorbidity between reading and arithmetic difficulties, which could co-occur with weakness in general intellectual abilities.

Acknowledgements

This study is supported by Eunice Kennedy Shriver National Institute of Child Health and Development (NICHD) R01HD065794 to Haskins Laboratories (Kenneth R. Pugh, PI). We thank Airey Lau, Alexis Lee, Bonnie Buis, Morgan Bontrager, Jocelyn Springfield, and Annie Stutzman for behavioral assessment, recruitment, data collection, and data management. Additional thanks to Jocelyn Springfield for proofreading.

References

- Achal, S., Hoefl, F., & Bray, S. (2016). Individual Differences in Adult Reading Are Associated with Left Temporo-parietal to Dorsal Striatal Functional Connectivity. *Cereb Cortex*, 26(10), 4069-4081. doi:10.1093/cercor/bhv214
- Al-Khudairi, R., Perera, B., Solomou, S., & Courtenay, K. (2019). Adults with intellectual disability and Attention Deficit Hyperactivity Disorder: Clinical characteristics and medication profiles. *British Journal of Learning Disabilities*, 47(2), 145-152. doi:10.1111/bld.12265
- Alloway, T. P. (2010). Working memory and executive function profiles of individuals with borderline intellectual functioning. *J Intellect Disabil Res*, 54(5), 448-456. doi:10.1111/j.1365-2788.2010.01281.x
- AmericanPsychiatricAssociation. (2013). *Diagnostic and Statistical Manual of Mental Disorders (5th Edition)*. Arlington, VA.
- Arsalidou, M., & Taylor, M. J. (2011). Is 2+2=4? Meta-analyses of brain areas needed for numbers and calculations. *Neuroimage*, 54(3), 2382-2393. doi:10.1016/j.neuroimage.2010.10.009
- Ashburn, S. M., Flowers, D. L., Napoliello, E. M., & Eden, G. F. (2020). Cerebellar function in children with and without dyslexia during single word processing. *Hum Brain Mapp*, 41(1), 120-138. doi:10.1002/hbm.24792
- Ashkenazi, S., Rosenberg-Lee, M., Metcalfe, A. W., Swigart, A. G., & Menon, V. (2013). Visuo-spatial working memory is an important source of domain-general vulnerability in the development of arithmetic cognition. *Neuropsychologia*, 51(11), 2305-2317. doi:10.1016/j.neuropsychologia.2013.06.031
- Ashkenazi, S., Rosenberg-Lee, M., Tenison, C., & Menon, V. (2012). Weak task-related modulation and stimulus representations during arithmetic problem solving in children with developmental dyscalculia. *Dev Cogn Neurosci*, 2 Suppl 1, S152-166. doi:10.1016/j.dcn.2011.09.006
- Avants, B. B., Tustison, N. J., Song, G., Cook, P. A., Klein, A., & Gee, J. C. (2011). A reproducible evaluation of ANTs similarity metric performance in brain image registration. *Neuroimage*, 54(3), 2033-2044. doi:10.1016/j.neuroimage.2010.09.025
- Baglio, F., Cabinio, M., Ricci, C., Baglio, G., Lipari, S., Griffanti, L., . . . Blasi, V. (2014). Abnormal development of sensory-motor, visual temporal and parahippocampal cortex in children with learning disabilities and borderline intellectual functioning. *Front Hum Neurosci*, 8, 806. doi:10.3389/fnhum.2014.00806
- Ball, G., Boardman, J. P., Rueckert, D., Aljabar, P., Arichi, T., Merchant, N., . . . Counsell, S. J. (2012). The effect of preterm birth on thalamic and cortical development. *Cereb Cortex*, 22(5), 1016-1024. doi:10.1093/cercor/bhr176

- Ball, G., Srinivasan, L., Aljabar, P., Counsell, S. J., Durighel, G., Hajnal, J. V., . . . Edwards, A. D. (2013). Development of cortical microstructure in the preterm human brain. *Proc Natl Acad Sci U S A*, *110*(23), 9541-9546. doi:10.1073/pnas.1301652110
- Barron, D. S., Eickhoff, S. B., Clos, M., & Fox, P. T. (2015). Human pulvinar functional organization and connectivity. *Hum Brain Mapp*, *36*(7), 2417-2431. doi:10.1002/hbm.22781
- Bartel-Friedrich, S., Broecker, Y., Knoergen, M., & Koesling, S. (2010). Development of fMRI tests for children with central auditory processing disorders. *In Vivo*, *24*(2), 201-209.
- Behzadi, Y., Restom, K., Liau, J., & Liu, T. T. (2007). A component based noise correction method (CompCor) for BOLD and perfusion based fMRI. *Neuroimage*, *37*(1), 90-101. doi:10.1016/j.neuroimage.2007.04.042
- Brankaer, C., Ghesquiere, P., & De Smedt, B. (2014). Numerical magnitude processing deficits in children with mathematical difficulties are independent of intelligence. *Res Dev Disabil*, *35*(11), 2603-2613. doi:10.1016/j.ridd.2014.06.022
- Brodeur, D. A., & Pond, M. (2001). The development of selective attention in children with attention deficit hyperactivity disorder. *J Abnorm Child Psychol*, *29*(3), 229-239. doi:10.1023/a:1010381731658
- Buckner, R. L., Andrews-Hanna, J. R., & Schacter, D. L. (2008). The brain's default network: anatomy, function, and relevance to disease. *Ann N Y Acad Sci*, *1124*, 1-38. doi:10.1196/annals.1440.011
- Bueno, A. P. A., Pinaya, W. H. L., Rebello, K., de Souza, L. C., Hornberger, M., & Sato, J. R. (2019). Regional Dynamics of the Resting Brain in Amyotrophic Lateral Sclerosis Using Fractional Amplitude of Low-Frequency Fluctuations and Regional Homogeneity Analyses. *Brain Connect*, *9*(4), 356-364. doi:10.1089/brain.2019.0663
- Bugden, S., Price, G. R., McLean, D. A., & Ansari, D. (2012). The role of the left intraparietal sulcus in the relationship between symbolic number processing and children's arithmetic competence. *Dev Cogn Neurosci*, *2*(4), 448-457. doi:10.1016/j.dcn.2012.04.001
- Bulthe, J., Prinsen, J., Vanderauwera, J., Duyck, S., Daniels, N., Gillebert, C. R., . . . De Smedt, B. (2019). Multi-method brain imaging reveals impaired representations of number as well as altered connectivity in adults with dyscalculia. *Neuroimage*, *190*, 289-302. doi:10.1016/j.neuroimage.2018.06.012
- Bzdok, D., Hartwigsen, G., Reid, A., Laird, A. R., Fox, P. T., & Eickhoff, S. B. (2016). Left inferior parietal lobe engagement in social cognition and language. *Neurosci Biobehav Rev*, *68*, 319-334. doi:10.1016/j.neubiorev.2016.02.024
- Caspers, S., & Zilles, K. (2018). Microarchitecture and connectivity of the parietal lobe. *Handb Clin Neurol*, *151*, 53-72. doi:10.1016/B978-0-444-63622-5.00003-6
- Chakravarty, M. M., Bertrand, G., Hodge, C. P., Sadikot, A. F., & Collins, D. L. (2006). The creation of a brain atlas for image guided neurosurgery using serial histological data. *Neuroimage*, *30*(2), 359-376. doi:10.1016/j.neuroimage.2005.09.041
- Chu, F. W., vanMarle, K., & Geary, D. C. (2016). Predicting Children's Reading and Mathematics Achievement from Early Quantitative Knowledge and Domain-General Cognitive Abilities. *Front Psychol*, *7*, 775. doi:10.3389/fpsyg.2016.00775
- Church, J. A., Coalson, R. S., Lugar, H. M., Petersen, S. E., & Schlaggar, B. L. (2008). A developmental fMRI study of reading and repetition reveals changes in phonological and visual mechanisms over age. *Cereb Cortex*, *18*(9), 2054-2065. doi:10.1093/cercor/bhm228
- Cohen, J. R., & D'Esposito, M. (2016). The Segregation and Integration of Distinct Brain Networks and Their Relationship to Cognition. *J Neurosci*, *36*(48), 12083-12094. doi:10.1523/JNEUROSCI.2965-15.2016
- Cole, M. W., Bassett, D. S., Power, J. D., Braver, T. S., & Petersen, S. E. (2014). Intrinsic and task-evoked network architectures of the human brain. *Neuron*, *83*(1), 238-251. doi:10.1016/j.neuron.2014.05.014

- Commodari, E. (2017). Novice Readers: The Role of Focused, Selective, Distributed and Alternating Attention at the First Year of the Academic Curriculum. *Iperception*, 8(4), 2041669517718557. doi:10.1177/2041669517718557
- Corbetta, M., & Shulman, G. L. (2002). Control of goal-directed and stimulus-driven attention in the brain. *Nat Rev Neurosci*, 3(3), 201-215. doi:10.1038/nrn755
- Crosson, B. (2013). Thalamic mechanisms in language: a reconsideration based on recent findings and concepts. *Brain Lang*, 126(1), 73-88. doi:10.1016/j.bandl.2012.06.011
- Dajani, D. R., & Uddin, L. Q. (2016). Local brain connectivity across development in autism spectrum disorder: A cross-sectional investigation. *Autism Res*, 9(1), 43-54. doi:10.1002/aur.1494
- De Smedt, B., Holloway, I. D., & Ansari, D. (2011). Effects of problem size and arithmetic operation on brain activation during calculation in children with varying levels of arithmetical fluency. *Neuroimage*, 57(3), 771-781. doi:10.1016/j.neuroimage.2010.12.037
- Dehaene, S., Molko, N., Cohen, L., & Wilson, A. J. (2004). Arithmetic and the brain. *Curr Opin Neurobiol*, 14(2), 218-224. doi:10.1016/j.conb.2004.03.008
- Dehaene, S., Piazza, M., Pinel, P., & Cohen, L. (2003). Three parietal circuits for number processing. *Cogn Neuropsychol*, 20(3), 487-506. doi:10.1080/02643290244000239
- Dennis, M., Francis, D. J., Cirino, P. T., Schachar, R., Barnes, M. A., & Fletcher, J. M. (2009). Why IQ is not a covariate in cognitive studies of neurodevelopmental disorders. *J Int Neuropsychol Soc*, 15(3), 331-343. doi:10.1017/S1355617709090481
- Di Blasi, F. D., Buono, S., Cantagallo, C., Di Filippo, G., & Zoccolotti, P. (2019). Reading skills in children with mild to borderline intellectual disability: a cross-sectional study on second to eighth graders. *J Intellect Disabil Res*, 63(8), 1023-1040. doi:10.1111/jir.12620
- Di, X., Gohel, S., Kim, E., & Biswal, B. (2013). Task vs. rest—different network configurations between the coactivation and the resting-state brain networks. *Frontiers in Human Neuroscience*, 7(493). doi:10.3389/fnhum.2013.00493
- Diaz, B., Hintz, F., Kiebel, S. J., & von Kriegstein, K. (2012). Dysfunction of the auditory thalamus in developmental dyslexia. *Proc Natl Acad Sci U S A*, 109(34), 13841-13846. doi:10.1073/pnas.1119828109
- Dietrich, S., Hertrich, I., & Ackermann, H. (2013). Ultra-fast speech comprehension in blind subjects engages primary visual cortex, fusiform gyrus, and pulvinar - a functional magnetic resonance imaging (fMRI) study. *BMC Neurosci*, 14, 74. doi:10.1186/1471-2202-14-74
- Dietrich, S., Hertrich, I., & Ackermann, H. (2015). Network Modeling for Functional Magnetic Resonance Imaging (fMRI) Signals during Ultra-Fast Speech Comprehension in Late-Blind Listeners. *PLoS One*, 10(7), e0132196. doi:10.1371/journal.pone.0132196
- Dixon, M. L., De La Vega, A., Mills, C., Andrews-Hanna, J., Spreng, R. N., Cole, M. W., & Christoff, K. (2018). Heterogeneity within the frontoparietal control network and its relationship to the default and dorsal attention networks. *Proc Natl Acad Sci U S A*, 115(7), E1598-E1607. doi:10.1073/pnas.1715766115
- Dosenbach, N. U., Fair, D. A., Cohen, A. L., Schlaggar, B. L., & Petersen, S. E. (2008). A dual-networks architecture of top-down control. *Trends Cogn Sci*, 12(3), 99-105. doi:10.1016/j.tics.2008.01.001
- Dosenbach, N. U., Fair, D. A., Miezin, F. M., Cohen, A. L., Wenger, K. K., Dosenbach, R. A., . . . Petersen, S. E. (2007). Distinct brain networks for adaptive and stable task control in humans. *Proc Natl Acad Sci U S A*, 104(26), 11073-11078. doi:10.1073/pnas.0704320104
- Dosenbach, N. U., Visscher, K. M., Palmer, E. D., Miezin, F. M., Wenger, K. K., Kang, H. C., . . . Petersen, S. E. (2006). A core system for the implementation of task sets. *Neuron*, 50(5), 799-812. doi:10.1016/j.neuron.2006.04.031
- Du, X. F., Liu, J., Hua, Q. F., & Wu, Y. J. (2019). Relapsing-Remitting Multiple Sclerosis Is Associated With Regional Brain Activity Deficits in Motor- and Cognitive-Related Brain Areas. *Front Neurol*, 10, 1136. doi:10.3389/fneur.2019.01136

- Eden, G. F., Jones, K. M., Cappell, K., Gareau, L., Wood, F. B., Zeffiro, T. A., . . . Flowers, D. L. (2004). Neural changes following remediation in adult developmental dyslexia. *Neuron*, *44*(3), 411-422. doi:10.1016/j.neuron.2004.10.019
- Erb, J., Henry, M. J., Eisner, F., & Obleser, J. (2012). Auditory skills and brain morphology predict individual differences in adaptation to degraded speech. *Neuropsychologia*, *50*(9), 2154-2164. doi:10.1016/j.neuropsychologia.2012.05.013
- Fair, D. A., Bathula, D., Mills, K. L., Dias, T. G., Blythe, M. S., Zhang, D., . . . Nagel, B. J. (2010). Maturing thalamocortical functional connectivity across development. *Front Syst Neurosci*, *4*, 10. doi:10.3389/fnsys.2010.00010
- Fangmeier, T., Knauff, M., Ruff, C. C., & Sloutsky, V. (2006). fMRI evidence for a three-stage model of deductive reasoning. *Journal of cognitive neuroscience*, *18*(3), 320-334. doi:10.1162/089892906775990651
- Fischer, J., & Whitney, D. (2012). Attention gates visual coding in the human pulvinar. *Nat Commun*, *3*, 1051. doi:10.1038/ncomms2054
- Fletcher, J. M., Francis, D. J., Rourke, B. P., Shaywitz, S. E., & Shaywitz, B. A. (1992). The validity of discrepancy-based definitions of reading disabilities. *J Learn Disabil*, *25*(9), 555-561, 573. doi:10.1177/002221949202500903
- Fletcher, J. M., Shaywitz, S. E., Shankweiler, D. P., Katz, L., Liberman, I. Y., Stuebing, K. K., . . . Shaywitz, B. A. (1994). Cognitive profiles of reading disability: Comparisons of discrepancy and low achievement definitions. *Journal of Educational Psychology*, *86*(1), 6-23. doi:10.1037/0022-0663.86.1.6
- Fox, M. D., Corbetta, M., Snyder, A. Z., Vincent, J. L., & Raichle, M. E. (2006). Spontaneous neuronal activity distinguishes human dorsal and ventral attention systems. *Proc Natl Acad Sci USA*, *103*(26), 10046-10051. doi:10.1073/pnas.0604187103
- Francis, D. J., Fletcher, J. M., Shaywitz, B. A., Shaywitz, S. E., & Rourke, B. P. (1996). Defining learning and language disabilities: Conceptual and psychometric issues with the use of IQ tests. *Language, Speech, and Hearing Services in Schools*, *27*(2), 132-143. doi:10.1044/0161-1461.2702.132
- Frazier, T. W., Demaree, H. A., & Youngstrom, E. A. (2004). Meta-analysis of intellectual and neuropsychological test performance in attention-deficit/hyperactivity disorder. *Neuropsychology*, *18*(3), 543-555. doi:10.1037/0894-4105.18.3.543
- Friston, K. J., Williams, S., Howard, R., Frackowiak, R. S., & Turner, R. (1996). Movement-related effects in fMRI time-series. *Magn Reson Med*, *35*(3), 346-355.
- Gaab, N., Gabrieli, J. D., Deutsch, G. K., Tallal, P., & Temple, E. (2007). Neural correlates of rapid auditory processing are disrupted in children with developmental dyslexia and ameliorated with training: an fMRI study. *Restor Neurol Neurosci*, *25*(3-4), 295-310.
- Gagné, F., & St Père, F. (2001). When IQ is controlled, does motivation still predict achievement? *Intelligence*, *30*(1), 71-100. doi:[https://doi.org/10.1016/S0160-2896\(01\)00068-X](https://doi.org/10.1016/S0160-2896(01)00068-X)
- Garrett, D. D., Epp, S. M., Perry, A., & Lindenberger, U. (2018). Local temporal variability reflects functional integration in the human brain. *Neuroimage*, *183*, 776-787. doi:10.1016/j.neuroimage.2018.08.019
- Gathercole, S. E., Woolgar, F., Team, C., Kievit, R. A., Astle, D., Manly, T., & Holmes, J. (2016). How Common are WM Deficits in Children with Difficulties in Reading and Mathematics? *J Appl Res Mem Cogn*, *5*(4), 384-394. doi:10.1016/j.jarmac.2016.07.013
- Goel, V., & Dolan, R. J. (2001). Functional neuroanatomy of three-term relational reasoning. *Neuropsychologia*, *39*(9), 901-909. doi:[https://doi.org/10.1016/S0028-3932\(01\)00024-0](https://doi.org/10.1016/S0028-3932(01)00024-0)
- Graboi, D., & Lisman, J. (2003). Recognition by top-down and bottom-up processing in cortex: the control of selective attention. *J Neurophysiol*, *90*(2), 798-810. doi:10.1152/jn.00777.2002

- Greene, D. J., Marek, S., Gordon, E. M., Siegel, J. S., Gratton, C., Laumann, T. O., . . . Dosenbach, N. U. F. (2019). Integrative and Network-Specific Connectivity of the Basal Ganglia and Thalamus Defined in Individuals. *Neuron*. doi:10.1016/j.neuron.2019.11.012
- Greve, D. N., & Fischl, B. (2009). Accurate and robust brain image alignment using boundary-based registration. *Neuroimage*, 48(1), 63-72. doi:<https://doi.org/10.1016/j.neuroimage.2009.06.060>
- Halassa, M. M., & Kastner, S. (2017). Thalamic functions in distributed cognitive control. *Nat Neurosci*, 20(12), 1669-1679. doi:10.1038/s41593-017-0020-1
- Han, Q., Zhang, Y., Liu, D., Wang, Y., Feng, Y., Yin, X., & Wang, J. (2018). Disrupted local neural activity and functional connectivity in subjective tinnitus patients: evidence from resting-state fMRI study. *Neuroradiology*, 60(11), 1193-1201. doi:10.1007/s00234-018-2087-0
- Hancock, R., Gabrieli, J. D. E., & Hoefl, F. (2016). Shared temporoparietal dysfunction in dyslexia and typical readers with discrepantly high IQ. *Trends Neurosci Educ*, 5(4), 173-177. doi:10.1016/j.tine.2016.10.001
- Hearne, L. J., Cocchi, L., Zalesky, A., & Mattingley, J. B. (2017). Reconfiguration of Brain Network Architectures between Resting-State and Complexity-Dependent Cognitive Reasoning. *J Neurosci*, 37(35), 8399-8411. doi:10.1523/JNEUROSCI.0485-17.2017
- Hoefl, F., Hernandez, A., McMillon, G., Taylor-Hill, H., Martindale, J. L., Meyler, A., . . . Gabrieli, J. D. (2006). Neural basis of dyslexia: a comparison between dyslexic and nondyslexic children equated for reading ability. *J Neurosci*, 26(42), 10700-10708. doi:10.1523/JNEUROSCI.4931-05.2006
- Hoexter, M. Q., Biazoli, C. E., Jr., Alvarenga, P. G., Batistuzzo, M. C., Salum, G. A., Gadelha, A., . . . Sato, J. R. (2018). Low frequency fluctuation of brain spontaneous activity and obsessive-compulsive symptoms in a large school-age sample. *J Psychiatr Res*, 96, 224-230. doi:10.1016/j.jpsychires.2017.10.009
- Houde, O., Rossi, S., Lubin, A., & Joliot, M. (2010). Mapping numerical processing, reading, and executive functions in the developing brain: an fMRI meta-analysis of 52 studies including 842 children. *Dev Sci*, 13(6), 876-885. doi:10.1111/j.1467-7687.2009.00938.x
- Hu, M. L., Zong, X. F., Zheng, J. J., Pantazatos, S. P., Miller, J. M., Li, Z. C., . . . Chen, X. G. (2016). Short-term Effects of Risperidone Monotherapy on Spontaneous Brain Activity in First-episode Treatment-naive Schizophrenia Patients: A Longitudinal fMRI Study. *Sci Rep*, 6, 34287. doi:10.1038/srep34287
- Hung, Y. H., Frost, S. J., Molfese, P., Malins, J. G., Landi, N., Mencl, W. E., . . . Pugh, K. R. (2019). Common neural basis of motor sequence learning and word recognition and its relation with individual differences in reading skill. *Sci Stud Read*, 23(1), 89-100. doi:10.1080/10888438.2018.1451533
- Hwang, K., Bertolero, M. A., Liu, W. B., & D'Esposito, M. (2017). The Human Thalamus Is an Integrative Hub for Functional Brain Networks. *J Neurosci*, 37(23), 5594-5607. doi:10.1523/JNEUROSCI.0067-17.2017
- Igelstrom, K. M., & Graziano, M. S. A. (2017). The inferior parietal lobule and temporoparietal junction: A network perspective. *Neuropsychologia*, 105, 70-83. doi:10.1016/j.neuropsychologia.2017.01.001
- Igelstrom, K. M., Webb, T. W., & Graziano, M. S. (2015). Neural Processes in the Human Temporoparietal Cortex Separated by Localized Independent Component Analysis. *J Neurosci*, 35(25), 9432-9445. doi:10.1523/JNEUROSCI.0551-15.2015
- Ivanov, I., Bansal, R., Hao, X., Zhu, H., Kellendonk, C., Miller, L., . . . Peterson, B. S. (2010). Morphological abnormalities of the thalamus in youths with attention deficit hyperactivity disorder. *Am J Psychiatry*, 167(4), 397-408. doi:10.1176/appi.ajp.2009.09030398
- Jansen, B. R., De Lange, E., & Van der Molen, M. J. (2013). Math practice and its influence on math skills and executive functions in adolescents with mild to borderline intellectual disability. *Res Dev Disabil*, 34(5), 1815-1824. doi:10.1016/j.ridd.2013.02.022

- Jenkinson, M., Bannister, P., Brady, M., & Smith, S. (2002). Improved optimization for the robust and accurate linear registration and motion correction of brain images. *Neuroimage*, *17*(2), 825-841.
- Jiang, L., Xu, T., He, Y., Hou, X. H., Wang, J., Cao, X. Y., . . . Zuo, X. N. (2015). Toward neurobiological characterization of functional homogeneity in the human cortex: regional variation, morphological association and functional covariance network organization. *Brain Struct Funct*, *220*(5), 2485-2507. doi:10.1007/s00429-014-0795-8
- Jiang, L., & Zuo, X. N. (2016). Regional Homogeneity: A Multimodal, Multiscale Neuroimaging Marker of the Human Connectome. *Neuroscientist*, *22*(5), 486-505. doi:10.1177/1073858415595004
- Jolles, D., Ashkenazi, S., Kochalka, J., Evans, T., Richardson, J., Rosenberg-Lee, M., . . . Menon, V. (2016). Parietal hyper-connectivity, aberrant brain organization, and circuit-based biomarkers in children with mathematical disabilities. *Dev Sci*, *19*(4), 613-631. doi:10.1111/desc.12399
- Jung, R. E., & Haier, R. J. (2007). The Parieto-Frontal Integration Theory (P-FIT) of intelligence: converging neuroimaging evidence. *Behav Brain Sci*, *30*(2), 135-154; discussion 154-187. doi:10.1017/S0140525X07001185
- Kaas, J. H., & Lyon, D. C. (2007). Pulvinar contributions to the dorsal and ventral streams of visual processing in primates. *Brain Res Rev*, *55*(2), 285-296. doi:10.1016/j.brainresrev.2007.02.008
- Kalcher, K., Boubela, R. N., Huf, W., Biswal, B. B., Baldinger, P., Sailer, U., . . . Windischberger, C. (2013). RESCALE: Voxel-specific task-fMRI scaling using resting state fluctuation amplitude. *Neuroimage*, *70*, 80-88. doi:10.1016/j.neuroimage.2012.12.019
- Kastner, S., O'Connor, D. H., Fukui, M. M., Fehd, H. M., Herwig, U., & Pinsk, M. A. (2004). Functional imaging of the human lateral geniculate nucleus and pulvinar. *J Neurophysiol*, *91*(1), 438-448. doi:10.1152/jn.00553.2003
- Kelly, A. M., Uddin, L. Q., Biswal, B. B., Castellanos, F. X., & Milham, M. P. (2008). Competition between functional brain networks mediates behavioral variability. *Neuroimage*, *39*(1), 527-537. doi:10.1016/j.neuroimage.2007.08.008
- Kirk, H. E., Gray, K. M., Ellis, K., Taffe, J., & Cornish, K. M. (2016). Computerised attention training for children with intellectual and developmental disabilities: a randomised controlled trial. *J Child Psychol Psychiatry*, *57*(12), 1380-1389. doi:10.1111/jcpp.12615
- Klostermann, F., Krugel, L. K., & Ehlen, F. (2013). Functional roles of the thalamus for language capacities. *Front Syst Neurosci*, *7*, 32. doi:10.3389/fnsys.2013.00032
- Koyama, M. S., Di Martino, A., Zuo, X. N., Kelly, C., Mennes, M., Jutagir, D. R., . . . Milham, M. P. (2011). Resting-state functional connectivity indexes reading competence in children and adults. *J Neurosci*, *31*(23), 8617-8624. doi:10.1523/JNEUROSCI.4865-10.2011
- Koyama, M. S., Ortiz-Mantilla, S., Roesler, C. P., Milham, M. P., & Benasich, A. A. (2017). A Modulatory Effect of Brief Passive Exposure to Non-linguistic Sounds on Intrinsic Functional Connectivity: Relevance to Cognitive Performance. *Cereb Cortex*, *27*(12), 5817-5830. doi:10.1093/cercor/bhx266
- Krauzlis, R. J., Bogadhi, A. R., Herman, J. P., & Bollimunta, A. (2018). Selective attention without a neocortex. *Cortex*, *102*, 161-175. doi:10.1016/j.cortex.2017.08.026
- Kriegeskorte, N., Simmons, W. K., Bellgowan, P. S., & Baker, C. I. (2009). Circular analysis in systems neuroscience: the dangers of double dipping. *Nat Neurosci*, *12*(5), 535-540. doi:10.1038/nn.2303
- Krienen, F. M., Yeo, B. T., & Buckner, R. L. (2014). Reconfigurable task-dependent functional coupling modes cluster around a core functional architecture. *Philos Trans R Soc Lond B Biol Sci*, *369*(1653). doi:10.1098/rstb.2013.0526
- Kuhn, M. R., Schwanenflugel, P. J., & Meisinger, E. B. (2010). Aligning Theory and Assessment of Reading Fluency: Automaticity, Prosody, and Definitions of Fluency. *Reading Research Quarterly*, *45*(2), 230-251. doi:10.1598/rrq.45.2.4
- Kuhn, S., Vanderhasselt, M. A., De Raedt, R., & Gallinat, J. (2014). The neural basis of unwanted thoughts during resting state. *Soc Cogn Affect Neurosci*, *9*(9), 1320-1324. doi:10.1093/scan/nst117

- Lambert, K., & Spinath, B. (2018). Conservation Abilities, Visuospatial Skills, and Numerosity Processing Speed: Association With Math Achievement and Math Difficulties in Elementary School Children. *J Learn Disabil*, 51(3), 223-235. doi:10.1177/0022219417690354
- Lenhard, W., & Lenhard, A. (2014). Hypothesis Tests for Comparing Correlations. Available: <https://www.psychometrica.de/correlation.html>.
- Li, X., Sroubek, A., Kelly, M. S., Lesser, I., Sussman, E., He, Y., . . . Foxe, J. J. (2012). Atypical pulvinar-cortical pathways during sustained attention performance in children with attention-deficit/hyperactivity disorder. *J Am Acad Child Adolesc Psychiatry*, 51(11), 1197-1207 e1194. doi:10.1016/j.jaac.2012.08.013
- Li, Y., Long, J., Huang, B., Yu, T., Wu, W., Li, P., . . . Sun, P. (2016). Selective Audiovisual Semantic Integration Enabled by Feature-Selective Attention. *Sci Rep*, 6, 18914. doi:10.1038/srep18914
- Li, Z., Zhu, Y., Childress, A. R., Detre, J. A., & Wang, Z. (2012). Relations between BOLD fMRI-derived resting brain activity and cerebral blood flow. *PLoS One*, 7(9), e44556. doi:10.1371/journal.pone.0044556
- Liu, X., Zhang, N., Chang, C., & Duyn, J. H. (2018). Co-activation patterns in resting-state fMRI signals. *Neuroimage*, 180(Pt B), 485-494. doi:10.1016/j.neuroimage.2018.01.041
- Llano, D. A. (2013). Functional imaging of the thalamus in language. *Brain Lang*, 126(1), 62-72. doi:10.1016/j.bandl.2012.06.004
- Logan, G. D. (1978). AUTOMATICITY AND READING: PERSPECTIVES FROM THE INSTANCE THEORY OF AUTOMATIZATION. *Reading & Writing Quarterly*, 13(2), 123-146.
- Loh, W. Y., Anderson, P. J., Cheong, J. L. Y., Spittle, A. J., Chen, J., Lee, K. J., . . . Thompson, D. K. (2017). Neonatal basal ganglia and thalamic volumes: very preterm birth and 7-year neurodevelopmental outcomes. *Pediatr Res*, 82(6), 970-978. doi:10.1038/pr.2017.161
- Lowrie, T., Logan, T., & Ramful, A. (2017). Visuospatial training improves elementary students' mathematics performance. *Br J Educ Psychol*, 87(2), 170-186. doi:10.1111/bjep.12142
- Maisog, J. M., Einbinder, E. R., Flowers, D. L., Turkeltaub, P. E., & Eden, G. F. (2008). A meta-analysis of functional neuroimaging studies of dyslexia. *Ann N Y Acad Sci*, 1145, 237-259. doi:10.1196/annals.1416.024
- Mars, R. B., Jbabdi, S., Sallet, J., O'Reilly, J. X., Croxson, P. L., Olivier, E., . . . Rushworth, M. F. (2011). Diffusion-weighted imaging tractography-based parcellation of the human parietal cortex and comparison with human and macaque resting-state functional connectivity. *J Neurosci*, 31(11), 4087-4100. doi:10.1523/JNEUROSCI.5102-10.2011
- Martin, A., Schurz, M., Kronbichler, M., & Richlan, F. (2015). Reading in the brain of children and adults: a meta-analysis of 40 functional magnetic resonance imaging studies. *Hum Brain Mapp*, 36(5), 1963-1981. doi:10.1002/hbm.22749
- Martinez, K. G., & Quirk, G. J. (2009). Extending fear extinction beyond anxiety disorders. *Biol Psychiatry*, 65(6), 453-454. doi:10.1016/j.biopsych.2008.12.025
- Mayes, S. D., Calhoun, S. L., Bixler, E. O., & Zimmerman, D. N. (2009). IQ and neuropsychological predictors of academic achievement. *Learning and Individual Differences*, 19(2), 238-241. doi:<https://doi.org/10.1016/j.lindif.2008.09.001>
- Mayes, S. D., Calhoun, S. L., & Crowell, E. W. (2000). Learning disabilities and ADHD: overlapping spectrum disorders. *J Learn Disabil*, 33(5), 417-424. doi:10.1177/002221940003300502
- Mennes, M., Zuo, X. N., Kelly, C., Di Martino, A., Zang, Y. F., Biswal, B., . . . Milham, M. P. (2011). Linking inter-individual differences in neural activation and behavior to intrinsic brain dynamics. *Neuroimage*, 54(4), 2950-2959. doi:10.1016/j.neuroimage.2010.10.046
- Menon, V. (2010). Developmental cognitive neuroscience of arithmetic: implications for learning and education. *ZDM*, 42(6), 515-525. doi:10.1007/s11858-010-0242-0

- Merkley, R., Matusz, P. J., & Scerif, G. (2018). Chapter 6 - The Control of Selective Attention and Emerging Mathematical Cognition: Beyond Unidirectional Influences. In A. Henik & W. Fias (Eds.), *Heterogeneity of Function in Numerical Cognition* (pp. 111-126): Academic Press.
- Meyler, A., Keller, T. A., Cherkassky, V. L., Gabrieli, J. D., & Just, M. A. (2008). Modifying the brain activation of poor readers during sentence comprehension with extended remedial instruction: a longitudinal study of neuroplasticity. *Neuropsychologia*, *46*(10), 2580-2592. doi:10.1016/j.neuropsychologia.2008.03.012
- Michels, L., O'Gorman, R., & Kucian, K. (2018). Functional hyperconnectivity vanishes in children with developmental dyscalculia after numerical intervention. *Dev Cogn Neurosci*, *30*, 291-303. doi:10.1016/j.dcn.2017.03.005
- Mueller, A., Hong, D. S., Shepard, S., & Moore, T. (2017). Linking ADHD to the Neural Circuitry of Attention. *Trends Cogn Sci*, *21*(6), 474-488. doi:10.1016/j.tics.2017.03.009
- Mumford, J. A., Poline, J. B., & Poldrack, R. A. (2015). Orthogonalization of regressors in fMRI models. *PLoS One*, *10*(4), e0126255. doi:10.1371/journal.pone.0126255
- Murayama, K., Pekrun, R., Lichtenfeld, S., & Vom Hofe, R. (2013). Predicting long-term growth in students' mathematics achievement: the unique contributions of motivation and cognitive strategies. *Child Dev*, *84*(4), 1475-1490. doi:10.1111/cdev.12036
- Nugent, A. C., Martinez, A., D'Alfonso, A., Zarate, C. A., & Theodore, W. H. (2015). The relationship between glucose metabolism, resting-state fMRI BOLD signal, and GABAA-binding potential: a preliminary study in healthy subjects and those with temporal lobe epilepsy. *J Cereb Blood Flow Metab*, *35*(4), 583-591. doi:10.1038/jcbfm.2014.228
- Oldfield, R. C. (1971). The assessment and analysis of handedness: The Edinburgh inventory. *Neuropsychologia*, *9*(1), 97-113. doi:[https://doi.org/10.1016/0028-3932\(71\)90067-4](https://doi.org/10.1016/0028-3932(71)90067-4)
- Paz-Alonso, P. M., Oliver, M., Lerma-Usabiaga, G., Caballero-Gaudes, C., Quinones, I., Suarez-Coalla, P., . . . Carreiras, M. (2018). Neural correlates of phonological, orthographic and semantic reading processing in dyslexia. *Neuroimage Clin*, *20*, 433-447. doi:10.1016/j.nicl.2018.08.018
- Peng, P., Wang, T., Wang, C., & Lin, X. (2019). A meta-analysis on the relation between fluid intelligence and reading/mathematics: Effects of tasks, age, and social economics status. *Psychol Bull*, *145*(2), 189-236. doi:10.1037/bul0000182
- Peyrin, C., Demonet, J. F., N'Guyen-Morel, M. A., Le Bas, J. F., & Valdois, S. (2011). Superior parietal lobule dysfunction in a homogeneous group of dyslexic children with a visual attention span disorder. *Brain Lang*, *118*(3), 128-138. doi:10.1016/j.bandl.2010.06.005
- Pluta, A., Wolak, T., Czajka, N., Lewandowska, M., Ciesla, K., Rusiniak, M., . . . Skarzynski, H. (2014). Reduced resting-state brain activity in the default mode network in children with (central) auditory processing disorders. *Behav Brain Funct*, *10*(1), 33. doi:10.1186/1744-9081-10-33
- Pugh, K. R., Frost, S. J., Sandak, R., Landi, N., Rueckl, J. G., Constable, R. T., . . . Mencl, W. E. (2008). Effects of stimulus difficulty and repetition on printed word identification: an fMRI comparison of nonimpaired and reading-disabled adolescent cohorts. *J Cogn Neurosci*, *20*(7), 1146-1160. doi:10.1162/jocn.2008.20079
- Pugh, K. R., Landi, N., Preston, J. L., Mencl, W. E., Austin, A. C., Sibley, D., . . . Frost, S. J. (2013). The relationship between phonological and auditory processing and brain organization in beginning readers. *Brain Lang*, *125*(2), 173-183. doi:10.1016/j.bandl.2012.04.004
- Pugh, K. R., offywitz, B. A., Shaywitz, S. E., Fulbright, R. K., Byrd, D., Skudlarski, P., . . . Gore, J. C. (1996). Auditory selective attention: an fMRI investigation. *Neuroimage*, *4*(3 Pt 1), 159-173. doi:10.1006/nimg.1996.0067
- Qiu, H., Li, X., Luo, Q., Li, Y., Zhou, X., Cao, H., . . . Sun, M. (2019). Alterations in patients with major depressive disorder before and after electroconvulsive therapy measured by fractional amplitude of low-frequency fluctuations (fALFF). *J Affect Disord*, *244*, 92-99. doi:10.1016/j.jad.2018.10.099

- Raichle, M. E., MacLeod, A. M., Snyder, A. Z., Powers, W. J., Gusnard, D. A., & Shulman, G. L. (2001). A default mode of brain function. *Proc Natl Acad Sci U S A*, *98*(2), 676-682. doi:10.1073/pnas.98.2.676
- Ramsden, S., Richardson, F. M., Josse, G., Shakeshaft, C., Seghier, M. L., & Price, C. J. (2013). The influence of reading ability on subsequent changes in verbal IQ in the teenage years. *Dev Cogn Neurosci*, *6*, 30-39. doi:10.1016/j.dcn.2013.06.001
- Reilhac, C., Peyrin, C., Demonet, J. F., & Valdois, S. (2013). Role of the superior parietal lobules in letter-identity processing within strings: fMRI evidence from skilled and dyslexic readers. *Neuropsychologia*, *51*(4), 601-612. doi:10.1016/j.neuropsychologia.2012.12.010
- Respino, M., Hoptman, M. J., Victoria, L. W., Alexopoulos, G. S., Solomonov, N., Stein, A. T., . . . Gunning, F. M. (2019). Cognitive Control Network Homogeneity and Executive Functions in Late-Life Depression. *Biol Psychiatry Cogn Neurosci Neuroimaging*. doi:10.1016/j.bpsc.2019.10.013
- Reynolds, M., & Besner, D. (2006). Reading aloud is not automatic: processing capacity is required to generate a phonological code from print. *J Exp Psychol Hum Percept Perform*, *32*(6), 1303-1323. doi:10.1037/0096-1523.32.6.1303
- Richlan, F., Kronbichler, M., & Wimmer, H. (2009). Functional abnormalities in the dyslexic brain: a quantitative meta-analysis of neuroimaging studies. *Hum Brain Mapp*, *30*(10), 3299-3308. doi:10.1002/hbm.20752
- Ritchie, S. J., Bates, T. C., & Plomin, R. (2015). Does learning to read improve intelligence? A longitudinal multivariate analysis in identical twins from age 7 to 16. *Child Dev*, *86*(1), 23-36. doi:10.1111/cdev.12272
- Rivera, S. M., Reiss, A. L., Eckert, M. A., & Menon, V. (2005). Developmental changes in mental arithmetic: evidence for increased functional specialization in the left inferior parietal cortex. *Cereb Cortex*, *15*(11), 1779-1790. doi:10.1093/cercor/bhi055
- Rodgers, B. (1983). The identification and prevalence of specific reading retardation. *Br J Educ Psychol*, *53* (Pt 3), 369-373. doi:10.1111/j.2044-8279.1983.tb02570.x
- Rogalsky, C., & Hickok, G. (2009). Selective attention to semantic and syntactic features modulates sentence processing networks in anterior temporal cortex. *Cereb Cortex*, *19*(4), 786-796. doi:10.1093/cercor/bhn126
- Rose, E., Bramham, J., Young, S., Paliokostas, E., & Xenitidis, K. (2009). Neuropsychological characteristics of adults with comorbid ADHD and borderline/mild intellectual disability. *Res Dev Disabil*, *30*(3), 496-502. doi:10.1016/j.ridd.2008.07.009
- Rose, T., & Bonhoeffer, T. (2018). Experience-dependent plasticity in the lateral geniculate nucleus. *Curr Opin Neurobiol*, *53*, 22-28. doi:10.1016/j.conb.2018.04.016
- Rosenberg-Lee, M., Barth, M., & Menon, V. (2011). What difference does a year of schooling make? Maturation of brain response and connectivity between 2nd and 3rd grades during arithmetic problem solving. *Neuroimage*, *57*(3), 796-808. doi:10.1016/j.neuroimage.2011.05.013
- Rutter, M., & Yule, W. (1975). The concept of specific reading retardation. *J Child Psychol Psychiatry*, *16*(3), 181-197. doi:10.1111/j.1469-7610.1975.tb01269.x
- Saalmann, Y. B., & Kastner, S. (2011). Cognitive and perceptual functions of the visual thalamus. *Neuron*, *71*(2), 209-223. doi:10.1016/j.neuron.2011.06.027
- Saalmann, Y. B., Pinsk, M. A., Wang, L., Li, X., & Kastner, S. (2012). The pulvinar regulates information transmission between cortical areas based on attention demands. *Science*, *337*(6095), 753-756. doi:10.1126/science.1223082
- Salvia, E., Tissier, C., Charron, S., Herent, P., Vidal, J., Lion, S., . . . Cachia, A. (2019). The local properties of bold signal fluctuations at rest monitor inhibitory control training in adolescents. *Dev Cogn Neurosci*, *38*, 100664. doi:10.1016/j.dcn.2019.100664
- Sanchez-Perez, N., Castillo, A., Lopez-Lopez, J. A., Pina, V., Puga, J. L., Campoy, G., . . . Fuentes, L. J. (2017). Computer-Based Training in Math and Working Memory Improves Cognitive Skills and

- Academic Achievement in Primary School Children: Behavioral Results. *Front Psychol*, 8, 2327. doi:10.3389/fpsyg.2017.02327
- Scheperjans, F., Eickhoff, S. B., Homke, L., Mohlberg, H., Hermann, K., Amunts, K., & Zilles, K. (2008). Probabilistic maps, morphometry, and variability of cytoarchitectonic areas in the human superior parietal cortex. *Cereb Cortex*, 18(9), 2141-2157. doi:10.1093/cercor/bhm241
- Scheperjans, F., Hermann, K., Eickhoff, S. B., Amunts, K., Schleicher, A., & Zilles, K. (2008). Observer-independent cytoarchitectonic mapping of the human superior parietal cortex. *Cereb Cortex*, 18(4), 846-867. doi:10.1093/cercor/bhm116
- Schultz, D. H., & Cole, M. W. (2016). Higher Intelligence Is Associated with Less Task-Related Brain Network Reconfiguration. *J Neurosci*, 36(33), 8551-8561. doi:10.1523/JNEUROSCI.0358-16.2016
- Seitzman, B. A., Gratton, C., Marek, S., Raut, R. V., Dosenbach, N. U. F., Schlaggar, B. L., . . . Greene, D. J. (2020). A set of functionally-defined brain regions with improved representation of the subcortex and cerebellum. *Neuroimage*, 206, 116290. doi:<https://doi.org/10.1016/j.neuroimage.2019.116290>
- Shaywitz, S. E., Escobar, M. D., Shaywitz, B. A., Fletcher, J. M., & Makuch, R. (1992). Evidence that dyslexia may represent the lower tail of a normal distribution of reading ability. *N Engl J Med*, 326(3), 145-150. doi:10.1056/NEJM199201163260301
- Shaywitz, S. E., & Shaywitz, B. A. (2008). Paying attention to reading: the neurobiology of reading and dyslexia. *Dev Psychopathol*, 20(4), 1329-1349. doi:10.1017/S0954579408000631
- Shomstein, S. (2012). Cognitive functions of the posterior parietal cortex: top-down and bottom-up attentional control. *Front Integr Neurosci*, 6, 38. doi:10.3389/fnint.2012.00038
- Simos, P. G., Rezaie, R., Papanicolaou, A. C., & Fletcher, J. M. (2014). Does IQ affect the functional brain network involved in pseudoword reading in students with reading disability? A magnetoencephalography study. *Front Hum Neurosci*, 7, 932. doi:10.3389/fnhum.2013.00932
- Skeide, M. A., Evans, T. M., Mei, E. Z., Abrams, D. A., & Menon, V. (2018). Neural signatures of co-occurring reading and mathematical difficulties. *Dev Sci*, 21(6), e12680. doi:10.1111/desc.12680
- Smith, A. T., Cotton, P. L., Bruno, A., & Moutsiana, C. (2009). Dissociating vision and visual attention in the human pulvinar. *J Neurophysiol*, 101(2), 917-925. doi:10.1152/jn.90963.2008
- Smith, S. M., Fox, P. T., Miller, K. L., Glahn, D. C., Fox, P. M., Mackay, C. E., . . . Beckmann, C. F. (2009). Correspondence of the brain's functional architecture during activation and rest. *Proc Natl Acad Sci USA*, 106(31), 13040-13045. doi:10.1073/pnas.0905267106
- Smyser, C. D., Inder, T. E., Shimony, J. S., Hill, J. E., Degnan, A. J., Snyder, A. Z., & Neil, J. J. (2010). Longitudinal analysis of neural network development in preterm infants. *Cereb Cortex*, 20(12), 2852-2862. doi:10.1093/cercor/bhq035
- Stein, J. (2018a). The current status of the magnocellular theory of developmental dyslexia. *Neuropsychologia*. doi:10.1016/j.neuropsychologia.2018.03.022
- Stein, J. (2018b). What is Developmental Dyslexia? *Brain Sci*, 8(2). doi:10.3390/brainsci8020026
- Stevens, C., & Bavelier, D. (2012). The role of selective attention on academic foundations: a cognitive neuroscience perspective. *Dev Cogn Neurosci*, 2 Suppl 1, S30-48. doi:10.1016/j.dcn.2011.11.001
- Stevenson, J. (1988). Which aspects of reading ability show a 'hump' in their distribution? *Applied Cognitive Psychology*, 2(1), 77-85. doi:10.1002/acp.2350020107
- Strauss, E., Sherman, E. M. S., & Spreen, O. (2006). *A compendium of neuropsychological tests: Administration, norms, and commentary, 3rd ed.* New York, NY, US: Oxford University Press.
- Stuebing, K. K., Barth, A. E., Molfese, P. J., Weiss, B., & Fletcher, J. M. (2009). IQ Is Not Strongly Related to Response to Reading Instruction: A Meta-Analytic Interpretation. *Exceptional children*, 76(1), 31-51.
- Talavage, T. M., Gonzalez-Castillo, J., & Scott, S. K. (2014). Auditory neuroimaging with fMRI and PET. *Hear Res*, 307, 4-15. doi:10.1016/j.heares.2013.09.009

- Tanaka, H., Black, J. M., Hulme, C., Stanley, L. M., Kesler, S. R., Whitfield-Gabrieli, S., . . . Hoefl, F. (2011). The brain basis of the phonological deficit in dyslexia is independent of IQ. *Psychol Sci*, 22(11), 1442-1451. doi:10.1177/0956797611419521
- Toulmin, H., Beckmann, C. F., O'Muircheartaigh, J., Ball, G., Nongena, P., Makropoulos, A., . . . Edwards, A. D. (2015). Specialization and integration of functional thalamocortical connectivity in the human infant. *Proc Natl Acad Sci U S A*, 112(20), 6485-6490. doi:10.1073/pnas.1422638112
- Unsworth, N., Fukuda, K., Awh, E., & Vogel, E. K. (2014). Working memory and fluid intelligence: capacity, attention control, and secondary memory retrieval. *Cogn Psychol*, 71, 1-26. doi:10.1016/j.cogpsych.2014.01.003
- Vellutino, F. R., Scanlon, D. M., & Lyon, G. R. (2000). Differentiating between difficult-to-remediate and readily remediated poor readers: more evidence against the IQ-achievement discrepancy definition of reading disability. *J Learn Disabil*, 33(3), 223-238. doi:10.1177/002221940003300302
- Vigneau, M., Jobard, G., Mazoyer, B., & Tzourio-Mazoyer, N. (2005). Word and non-word reading: what role for the Visual Word Form Area? *Neuroimage*, 27(3), 694-705. doi:10.1016/j.neuroimage.2005.04.038
- Volpe, J. J. (2009). Brain injury in premature infants: a complex amalgam of destructive and developmental disturbances. *Lancet Neurol*, 8(1), 110-124. doi:10.1016/S1474-4422(08)70294-1
- von Kriegstein, K., Eger, E., Kleinschmidt, A., & Giraud, A. L. (2003). Modulation of neural responses to speech by directing attention to voices or verbal content. *Cognitive Brain Research*, 17(1), 48-55. doi:[https://doi.org/10.1016/S0926-6410\(03\)00079-X](https://doi.org/10.1016/S0926-6410(03)00079-X)
- Vossel, S., Geng, J. J., & Fink, G. R. (2014). Dorsal and ventral attention systems: distinct neural circuits but collaborative roles. *Neuroscientist*, 20(2), 150-159. doi:10.1177/1073858413494269
- Wadsworth, S. J., DeFries, J. C., Willcutt, E. G., Pennington, B. F., & Olson, R. K. (2015). The Colorado Longitudinal Twin Study of Reading Difficulties and ADHD: Etiologies of Comorbidity and Stability. *Twin Res Hum Genet*, 18(6), 755-761. doi:10.1017/thg.2015.66
- Wang, J., Yang, Y., Fan, L., Xu, J., Li, C., Liu, Y., . . . Jiang, T. (2015). Convergent functional architecture of the superior parietal lobule unraveled with multimodal neuroimaging approaches. *Hum Brain Mapp*, 36(1), 238-257. doi:10.1002/hbm.22626
- Wechsler, D. (1999). *Wechsler Abbreviated Scale of Intelligence*. San Antonio, TX: The Psychological Corporation.
- Wendelken, C. (2014). Meta-analysis: how does posterior parietal cortex contribute to reasoning? *Front Hum Neurosci*, 8, 1042. doi:10.3389/fnhum.2014.01042
- Wieland, J., & Zitman, F. G. (2016). It is time to bring borderline intellectual functioning back into the main fold of classification systems. *BJPsycho Bull*, 40(4), 204-206. doi:10.1192/pb.bp.115.051490
- Willcutt, E. G., Petrill, S. A., Wu, S., Boada, R., Defries, J. C., Olson, R. K., & Pennington, B. F. (2013). Comorbidity between reading disability and math disability: concurrent psychopathology, functional impairment, and neuropsychological functioning. *J Learn Disabil*, 46(6), 500-516. doi:10.1177/0022219413477476
- Wolf, G. (2018). Developing Reading Automaticity and Fluency: Revisiting What Reading Teachers Know, Putting Confirmed Research into Current Practice. . *Creative Education*, 9, 838-855. doi:10.4236/ce.2018.96062.
- Woodcock, R., Mather, N., & McGrew, K. (2007). *Woodcock Johnson III - Tests of Achievement*. Rolling Meadows, IL: Riverside Publishing.
- Wu, R., Ou, Y., Liu, F., Chen, J., Li, H., Zhao, J., . . . Fan, X. (2019). Reduced Brain Activity in the Right Putamen as an Early Predictor for Treatment Response in Drug-Naive, First-Episode Schizophrenia. *Front Psychiatry*, 10, 741. doi:10.3389/fpsy.2019.00741
- Xu, M., De Beuckelaer, A., Wang, X., Liu, L., Song, Y., & Liu, J. (2015). Regional amplitude of the low-frequency fluctuations at rest predicts word-reading skill. *Neuroscience*, 298, 318-328. doi:10.1016/j.neuroscience.2015.04.025

- Xu, Y., Zhuo, C., Qin, W., Zhu, J., & Yu, C. (2015). Altered Spontaneous Brain Activity in Schizophrenia: A Meta-Analysis and a Large-Sample Study. *Biomed Res Int*, 2015, 204628. doi:10.1155/2015/204628
- Xue, S. W., Lee, T. W., & Guo, Y. H. (2018). Spontaneous activity in medial orbitofrontal cortex correlates with trait anxiety in healthy male adults. *J Zhejiang Univ Sci B*, 19(8), 643-653. doi:10.1631/jzus.B1700481
- Yang, Z., Jutagir, D. R., Koyama, M. S., Craddock, R. C., Yan, C. G., Shehzad, Z., . . . Milham, M. P. (2015). Intrinsic brain indices of verbal working memory capacity in children and adolescents. *Dev Cogn Neurosci*, 15, 67-82. doi:10.1016/j.dcn.2015.07.007
- Yantis, S. (2008). The Neural Basis of Selective Attention: Cortical Sources and Targets of Attentional Modulation. *Curr Dir Psychol Sci*, 17(2), 86-90. doi:10.1111/j.1467-8721.2008.00554.x
- Yoncheva, Y., Maurer, U., Zevin, J. D., & McCandliss, B. D. (2014). Selective attention to phonology dynamically modulates initial encoding of auditory words within the left hemisphere. *Neuroimage*, 97, 262-270. doi:10.1016/j.neuroimage.2014.04.006
- Yuan, R., Di, X., Kim, E. H., Barik, S., Rypma, B., & Biswal, B. B. (2013). Regional homogeneity of resting-state fMRI contributes to both neurovascular and task activation variations. *Magn Reson Imaging*, 31(9), 1492-1500. doi:10.1016/j.mri.2013.07.005
- Zang, Y., Jiang, T., Lu, Y., He, Y., & Tian, L. (2004). Regional homogeneity approach to fMRI data analysis. *Neuroimage*, 22(1), 394-400. doi:10.1016/j.neuroimage.2003.12.030
- Zhao, X., Yao, J., Lv, Y., Zhang, X., Han, C., Chen, L., . . . Sui, Y. (2019). Abnormalities of regional homogeneity and its correlation with clinical symptoms in Naive patients with first-episode schizophrenia. *Brain Imaging Behav*, 13(2), 503-513. doi:10.1007/s11682-018-9882-4
- Zhou, H., Schafer, R. J., & Desimone, R. (2016). Pulvinar-Cortex Interactions in Vision and Attention. *Neuron*, 89(1), 209-220. doi:10.1016/j.neuron.2015.11.034
- Zou, Q. H., Zhu, C. Z., Yang, Y., Zuo, X. N., Long, X. Y., Cao, Q. J., . . . Zang, Y. F. (2008). An improved approach to detection of amplitude of low-frequency fluctuation (ALFF) for resting-state fMRI: fractional ALFF. *J Neurosci Methods*, 172(1), 137-141. doi:10.1016/j.jneumeth.2008.04.012