

Supplementary Figure Titles and Legends

Figure S1. Heatmap of ACE-2-, CD147-and CD26-related gene expression in different cells and tissues

Figure S2. Gene Co-Expression in Bronchial Biopsy in non-diseased control

Figure S3. Gene Co-Expression in Blood in non-diseased control

Figure S4. Human Bronchial Epithelial Cells

A-E Gene expression of ACE, SDC1, LGALS3, NFAT5 and NME1 in control, asthma and COPD population

Figure S5. Bronchial Biopsy

A-F Gene expression of ACE, ACE2, BSG(CD147), CD44, SLC7A5(CD98) and ITGA3 in subgroups including control, asthma, COPD, non-obese, obese, normotension, hypertension, non-smoker, smoker, female and male.

G-H Gene expression of ITGA6 and APOD in subgroups including control, asthma, COPD, non-obese, obese, normotension, hypertension, non-smoker, smoker, female and male.

Figure S6. Gene Co-Expression in Bronchial Biopsy in asthma patients

Figure S7. Broncho-Alveolar Lavage

A-F Gene expression of ACE, ACE2, BSG(CD147), PPIA, S100A9 and CD44 in subgroups including control, asthma, COPD, non-obese, obese, normotension, hypertension, non-smoker, smoker, female and male.

G-L Gene expression of SLC16A7(MCT2), SLC16A3(MCTs), ITGA3, NFATC1, NFATC2 and SLC7A5(CD98) in subgroups including control, asthma, COPD, non-obese, obese, normotension, hypertension, non-smoker, smoker, female and male.

M-O Gene expression of APH1A, PSEN1 and PSENEN in subgroups including control, asthma, COPD, non-obese, obese, normotension, hypertension, non-

smoker, smoker, female and male.

Figure S8. Blood

A-F Gene expression of ACE, ACE2, BSG(CD147), PPIA, S100A9 and CD44 in subgroups including control, asthma, COPD, non-obese, obese, normotension, hypertension, non-smoker, smoker, female and male.

G-L Gene expression of SLC16A7(MCT2), ITGA6, NFATC2, LGALS3, NOD2 and NME1 in subgroups including control, asthma, COPD, non-obese, obese, normotension, hypertension, non-smoker, smoker, female and male.

M Gene expression of DPP4 in subgroups including control, asthma, COPD, non-obese, obese, normotension, hypertension, non-smoker, smoker, female and male.

Figure S9. Gene Co-Expression in Broncho-Alveolar Lavage in asthma patients

Figure S10. Gene Co-Expression in Blood in asthma patients

Figure S11. Correlation Analysis

A Correlation analysis between SDC1 and age in broncho-alveolar lavage

B Correlation analysis between SLC16A1 and age in blood

C Correlation analysis between NME1 and BMI in blood

D Correlation analysis between NCSTN and BMI in blood

Figure S2

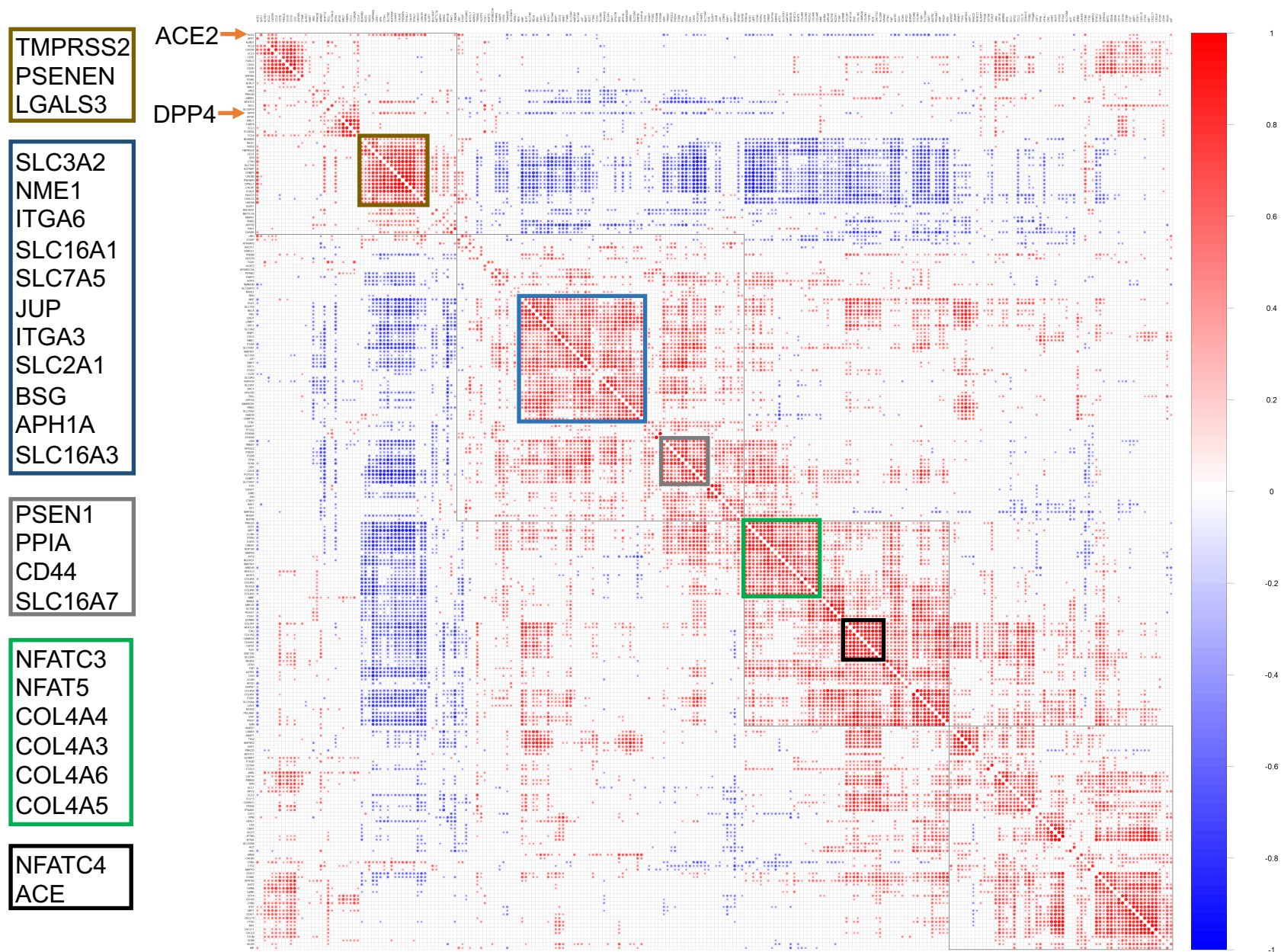


Figure S3

NME1
PPIA

NFAT5
SLC16A7
CD44
APH1B

DPP4 →

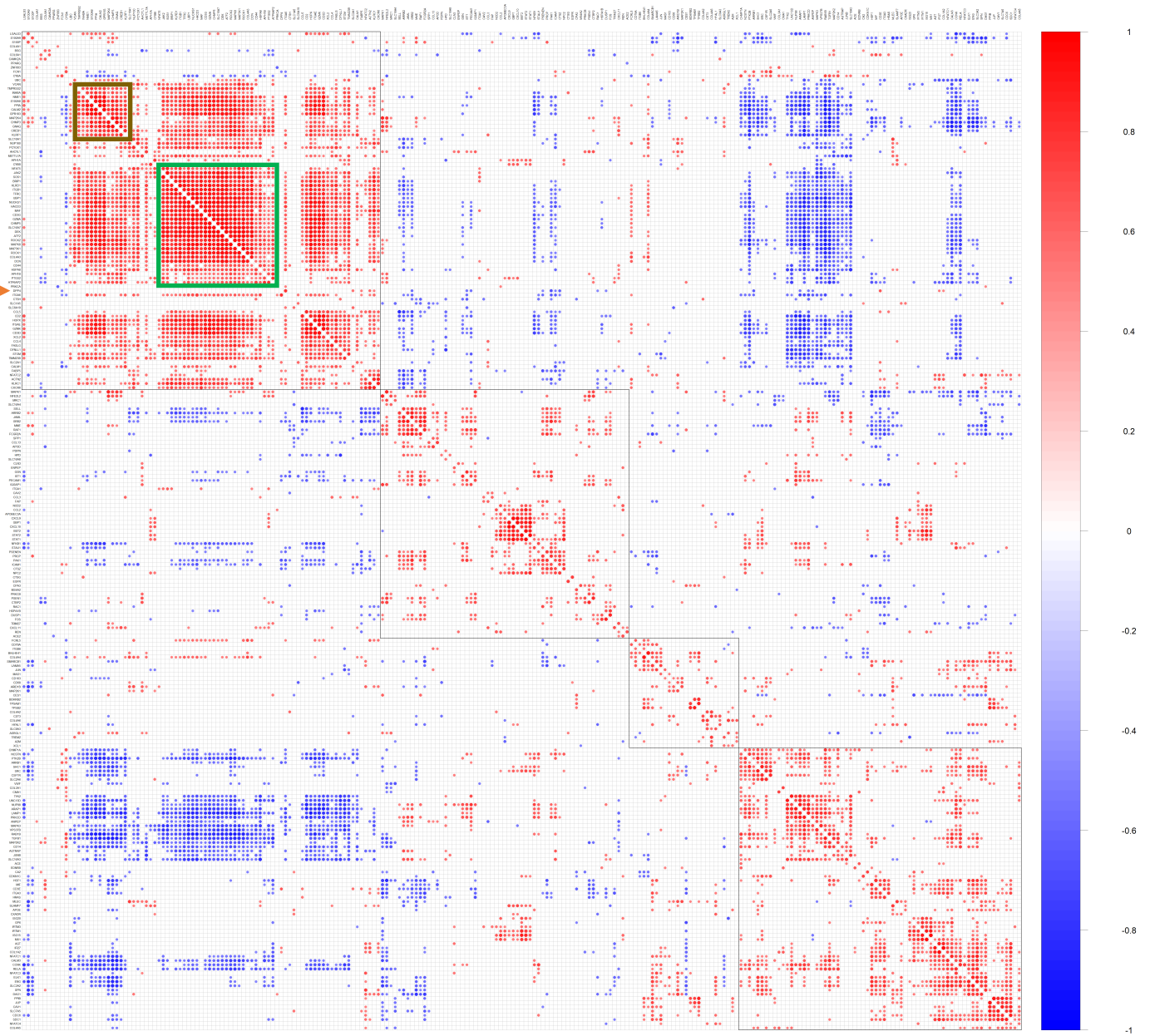


Figure S4

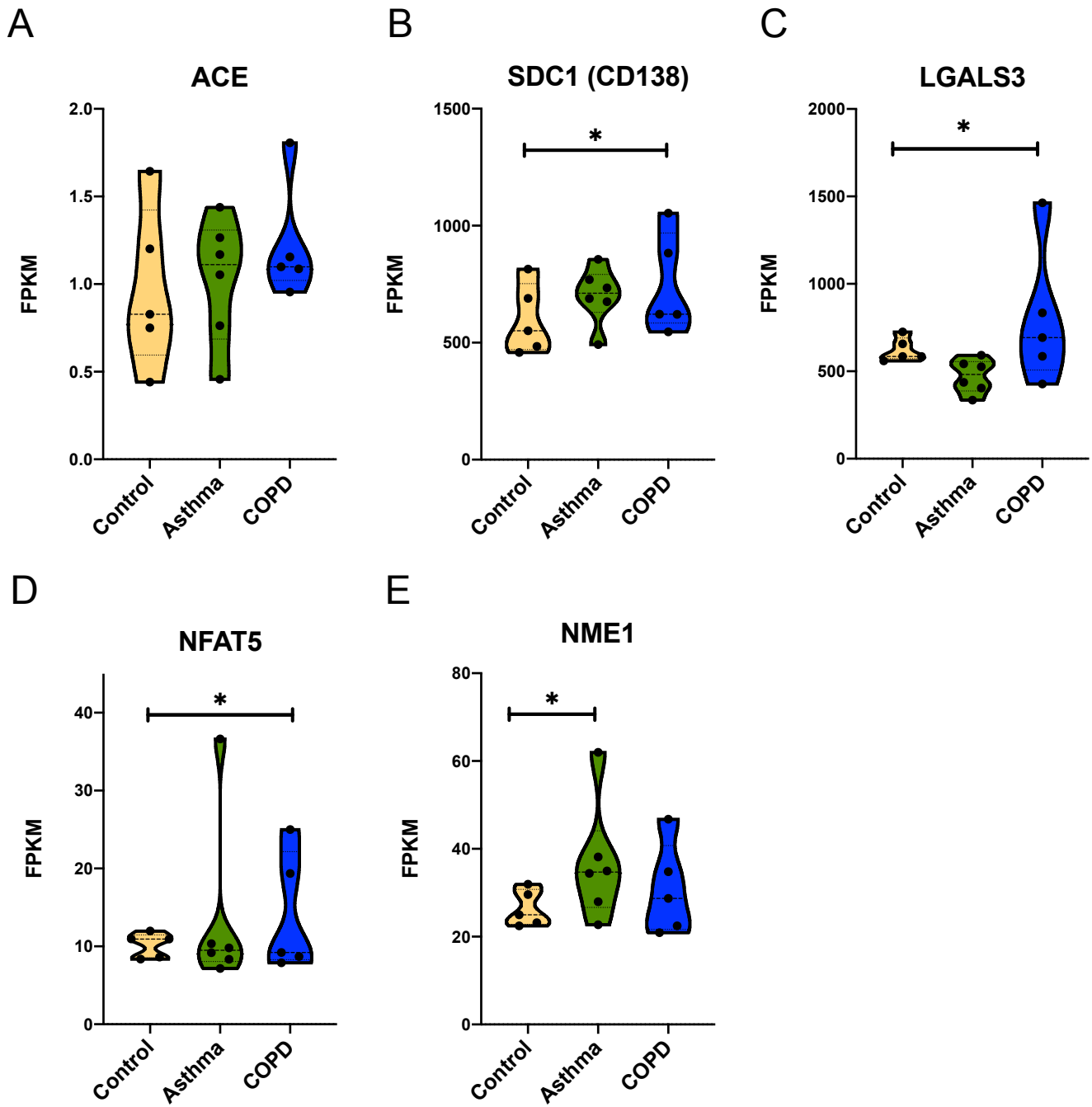


Figure S5

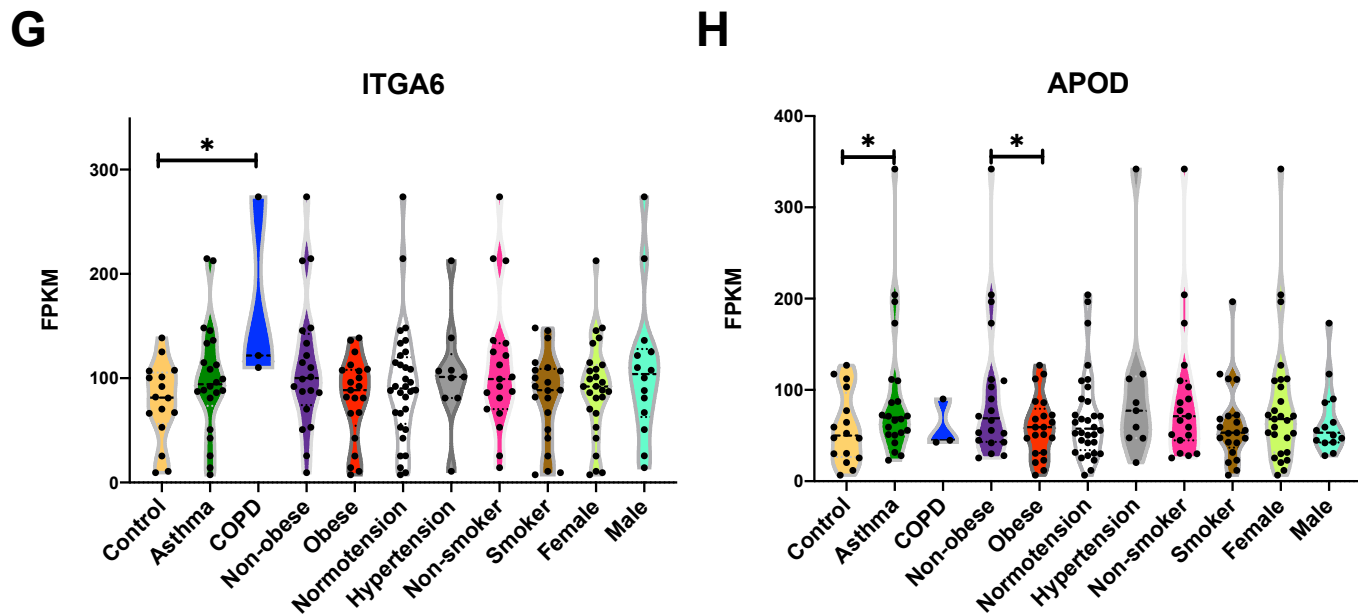


Figure S6

LGALS3
PSENNEN
TMPRSS2

NFATC1
NFATC4

NCSTN
SLC16A3

SLC16A1
CD44

SLC3A2
PPIA

SDC1
APH1A

ITGA3
JUP

NFAT5
EGFR

NME1
PPIB
ACE2

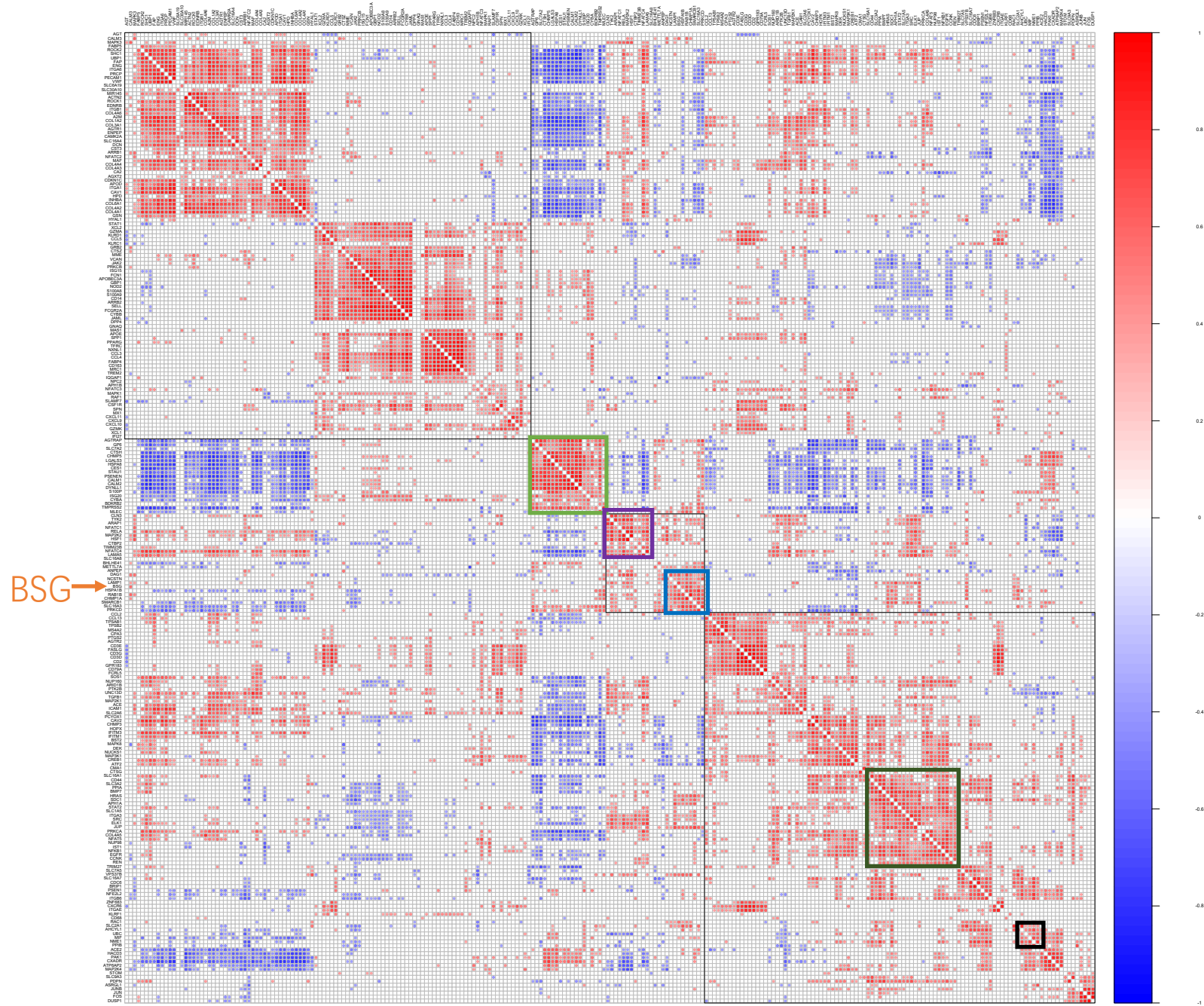


Figure S7

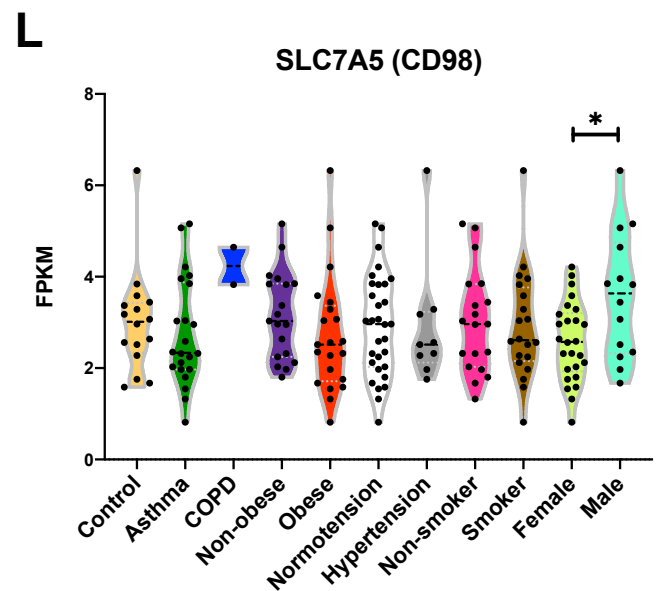
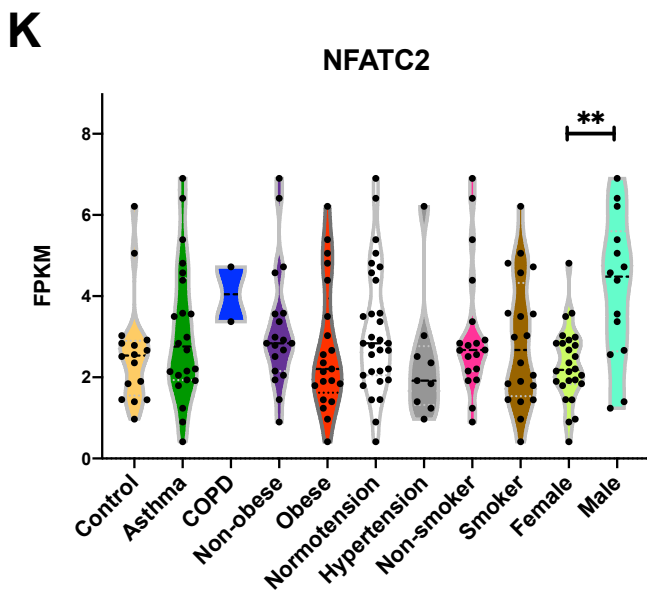
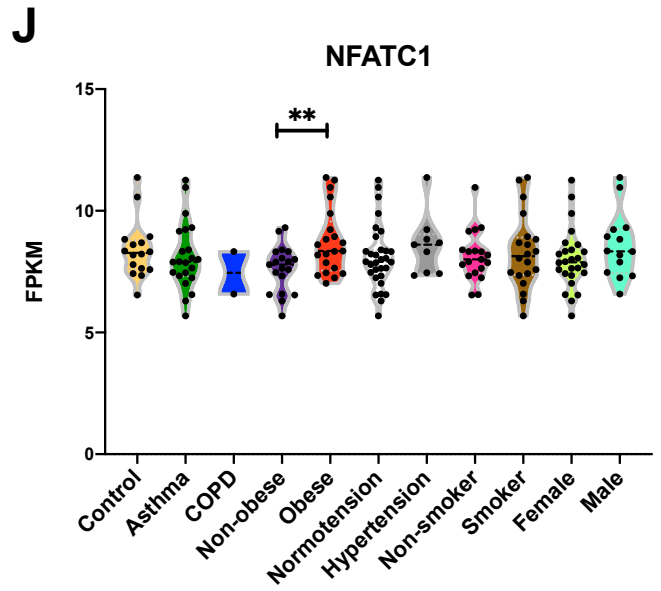
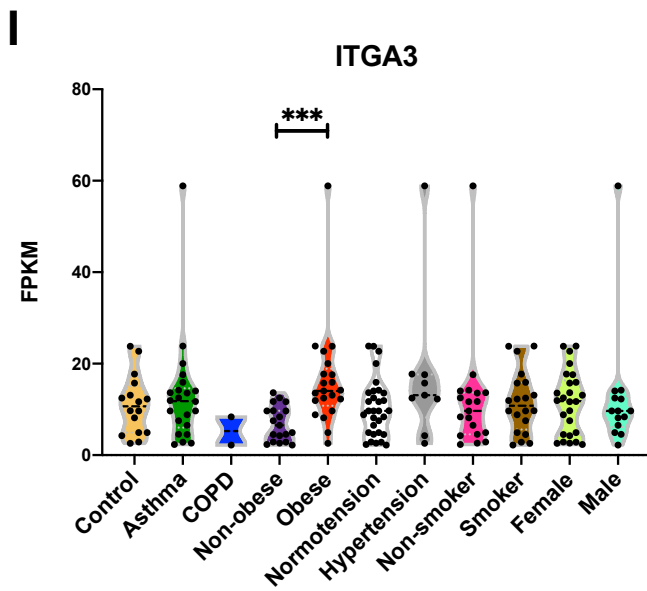
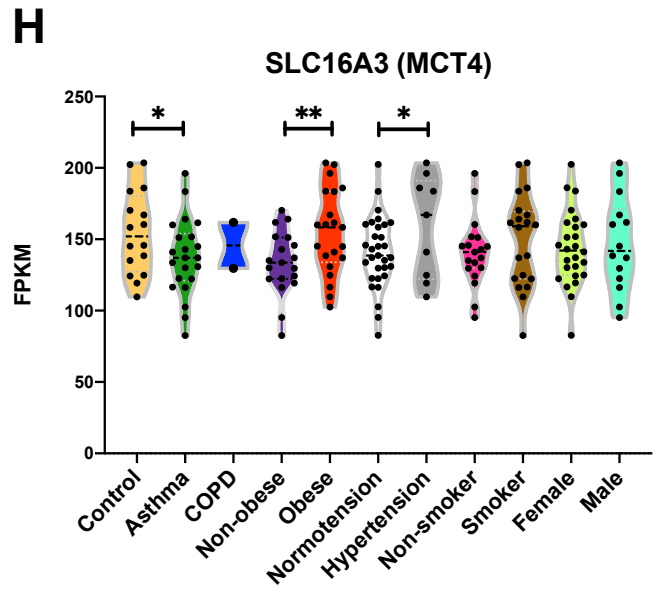
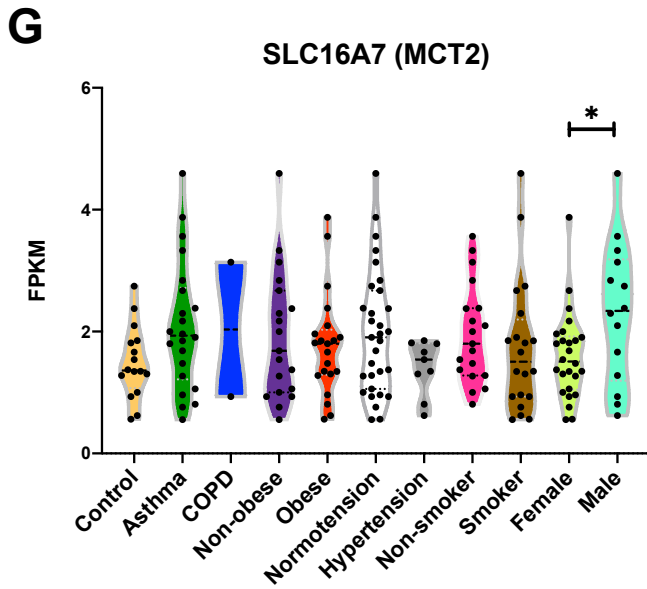
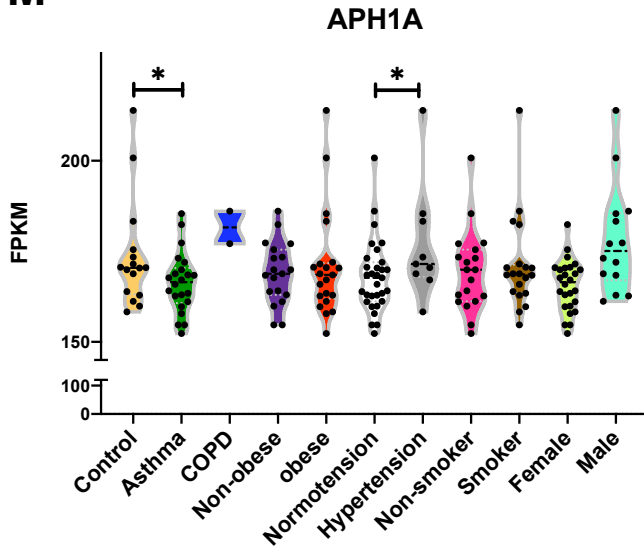
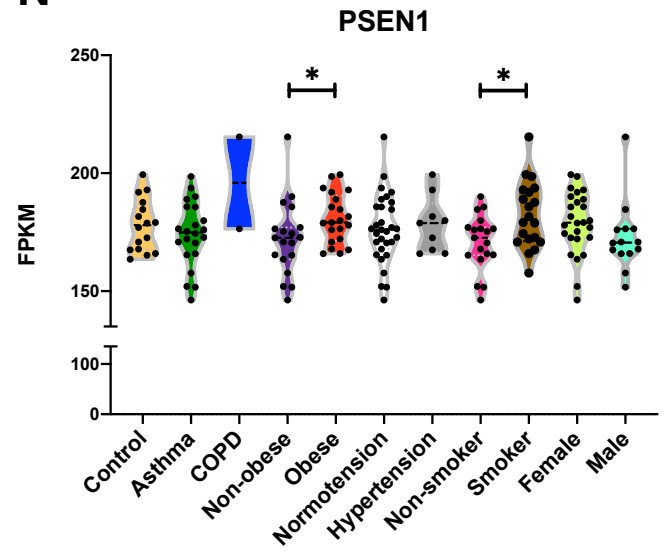


Figure S7

M



N



O

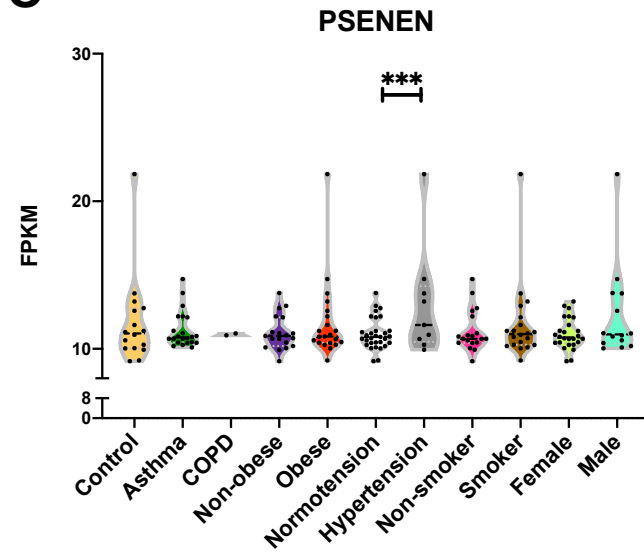


Figure S8

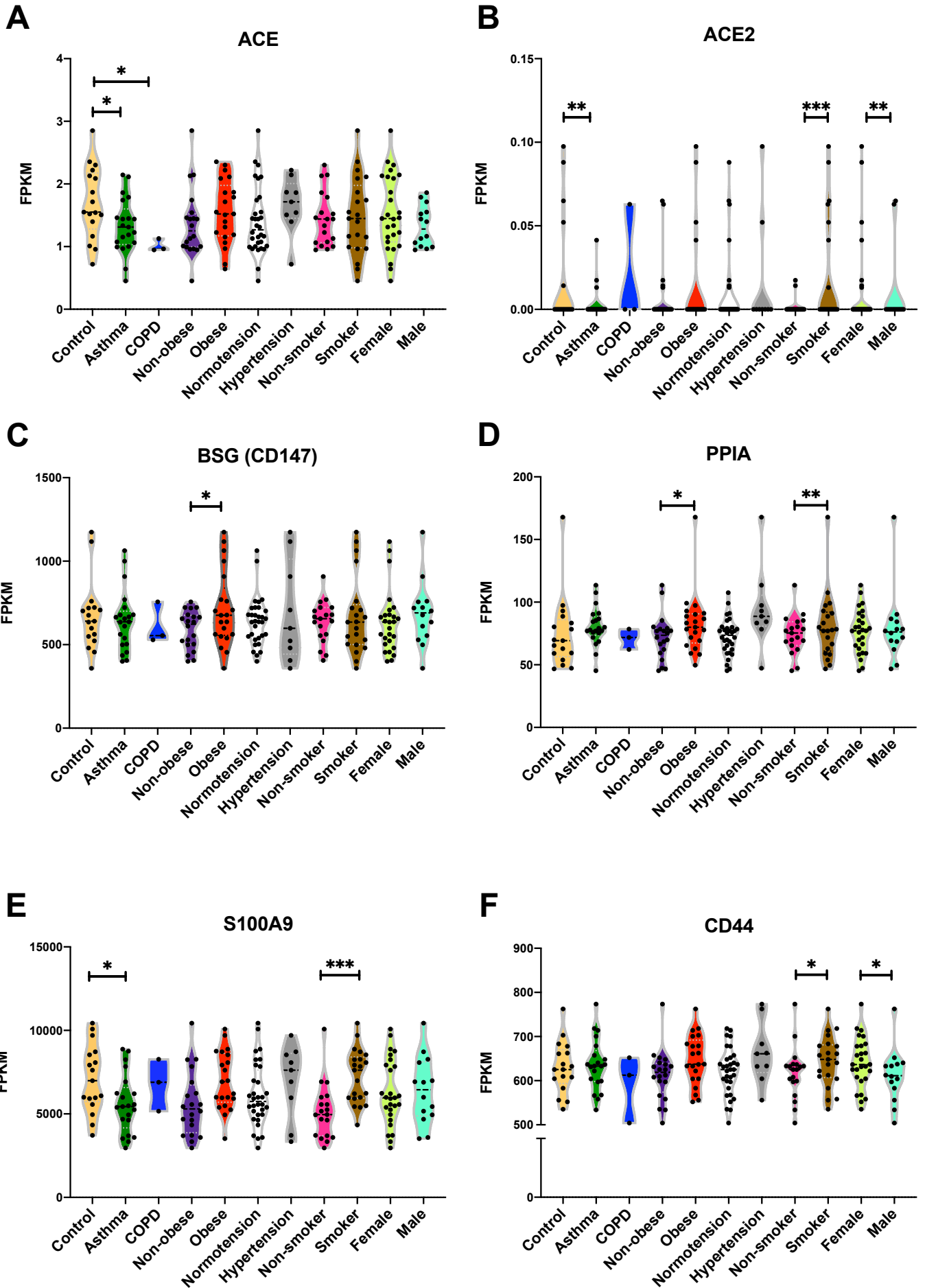


Figure S8

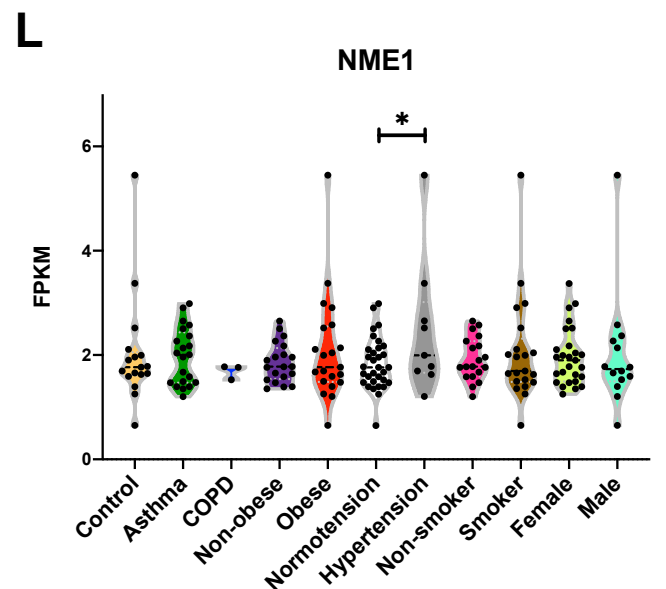
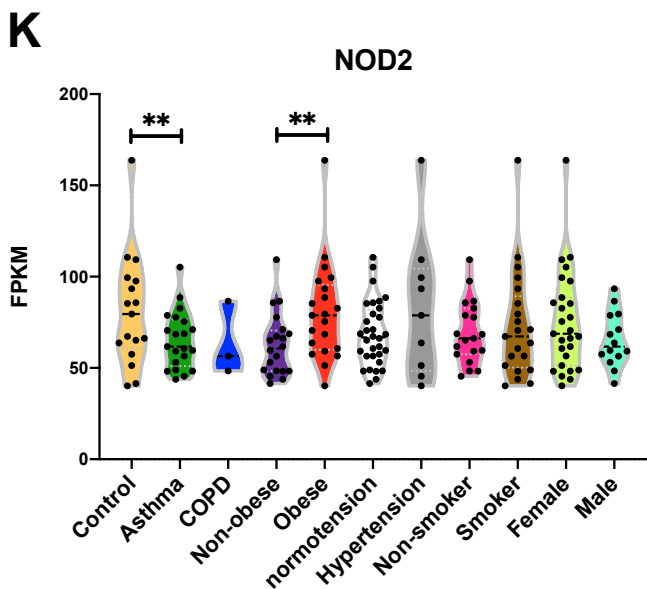
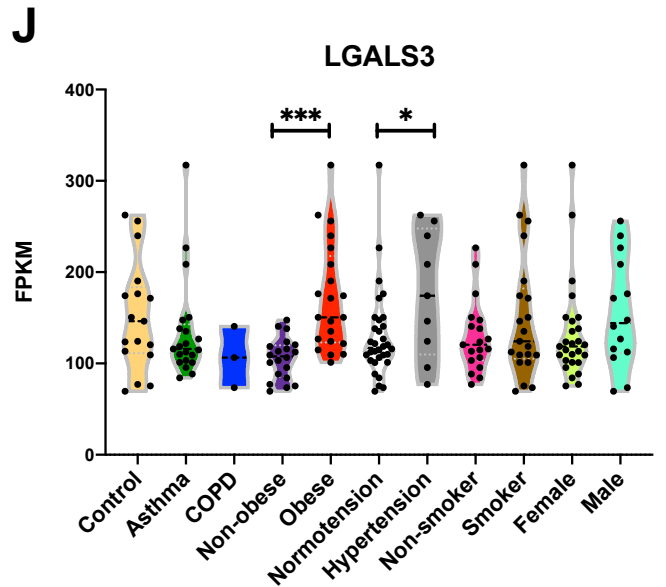
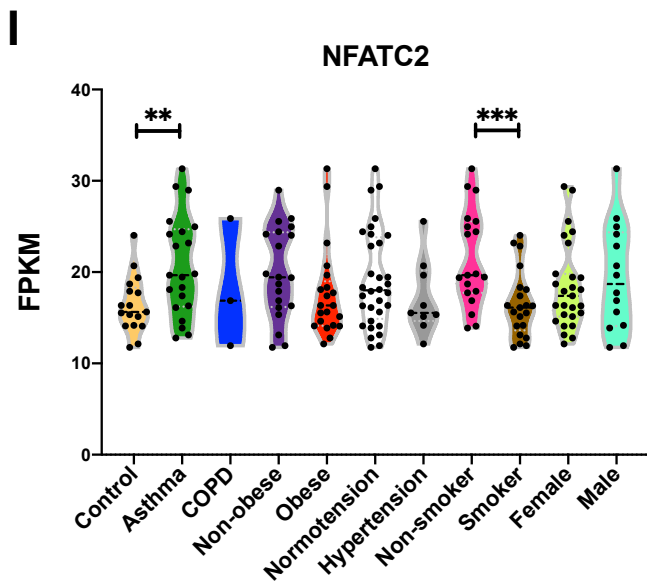
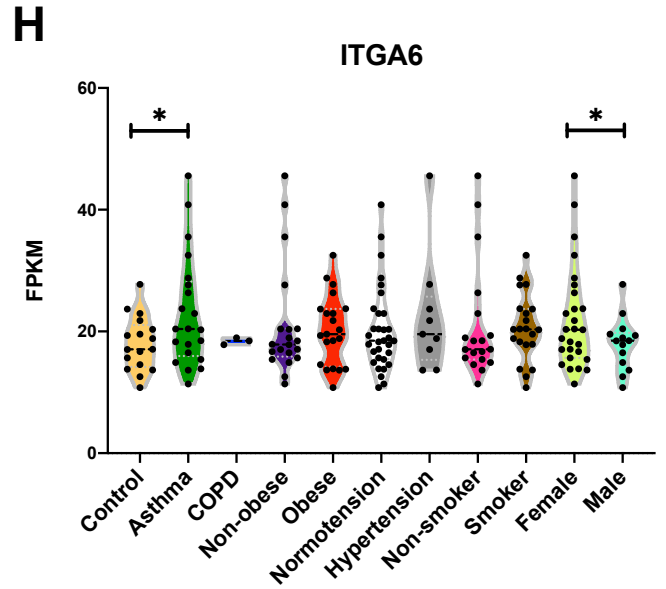
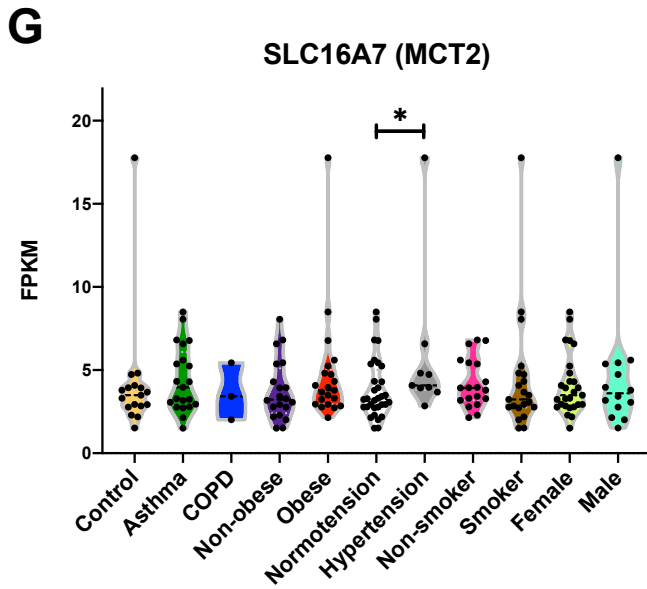


Figure S8

M

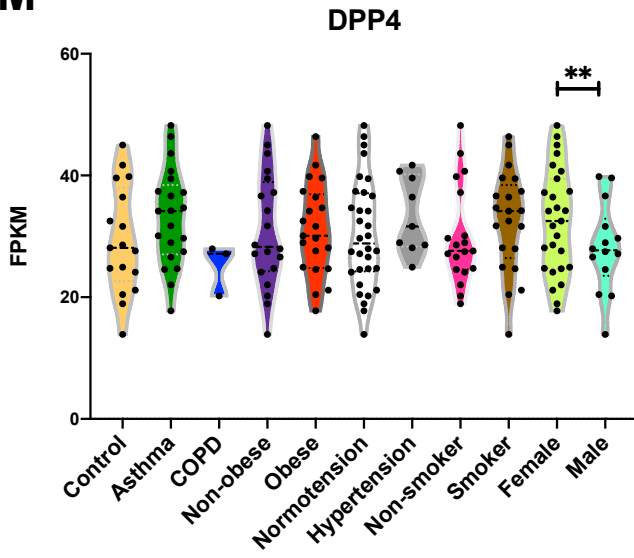


Figure S9

SLC7A5
NFATC2

PPIB
SLC2A1
APH1A

S100A9
CD44

APOD
TMPRSS2
ITGB6
NFATC4

ITGB1
SPN

SLC16A7
DPP4

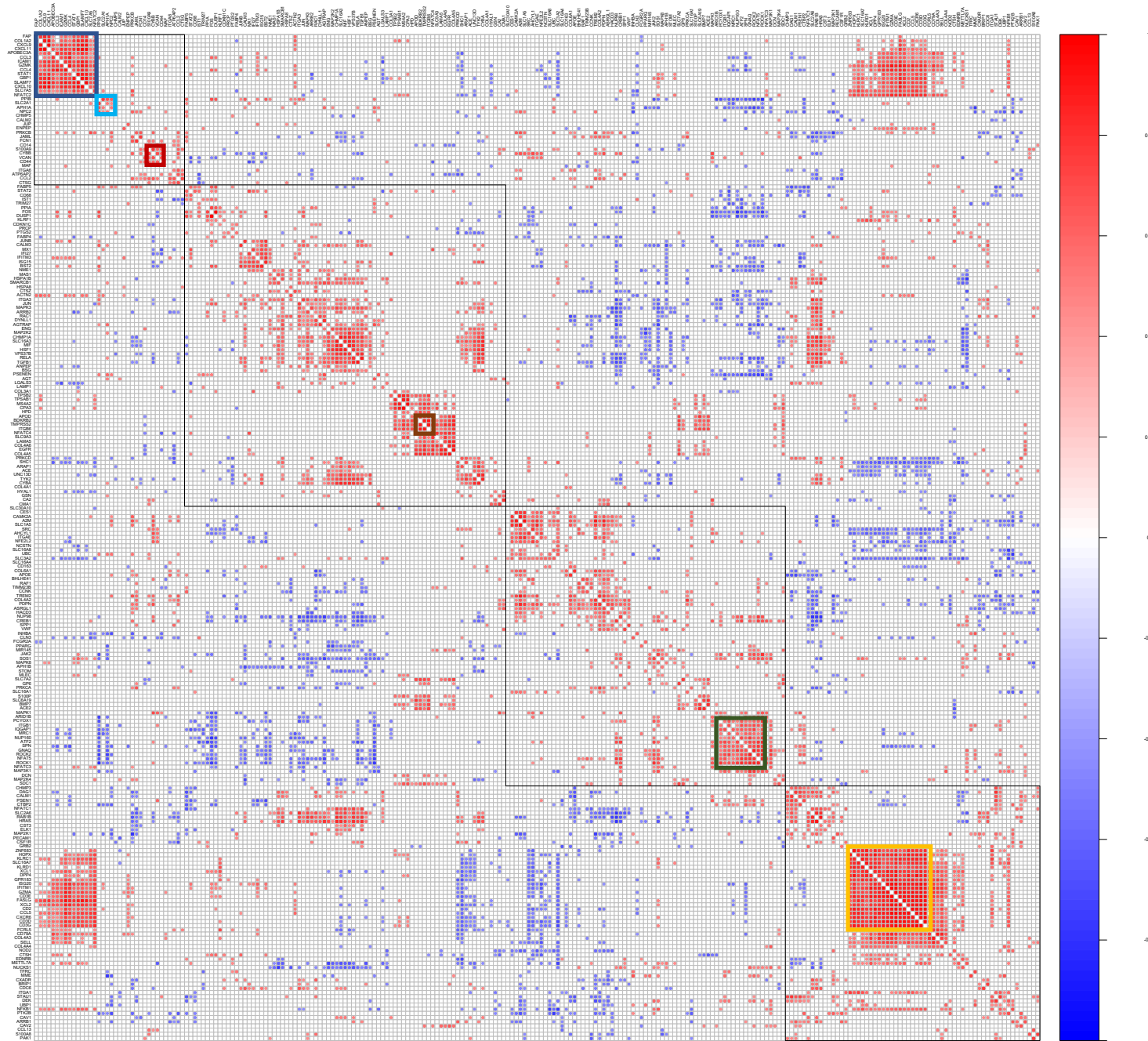


Figure S10

SLC2A1
SPN
ITGA3
NFATC1
SLC3A2

PPIA
NME1

NFATC3
NFATC2

BSG
SLC7A5

ITGA1
APH1A

S100A9
PSEN1
APH1B

TMPRSS2
SLC16A7
NFAT5

CD44
DPP4
ITGA6

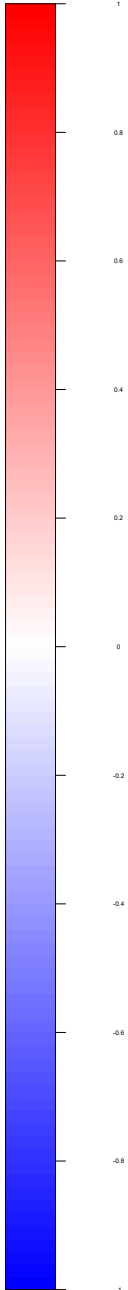
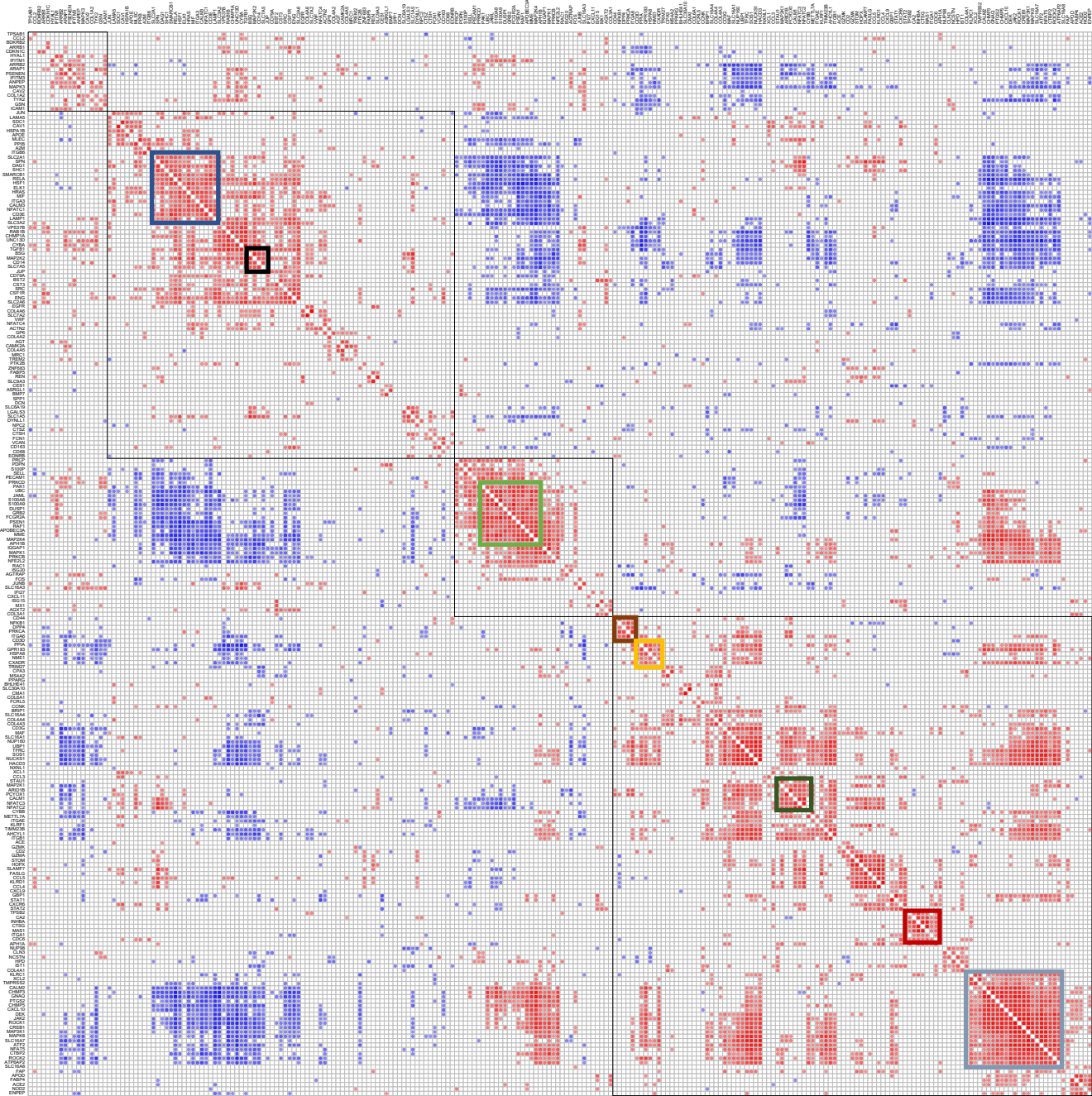
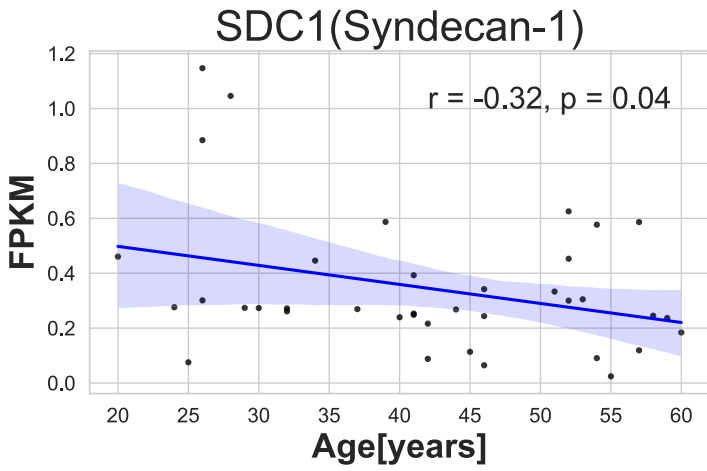
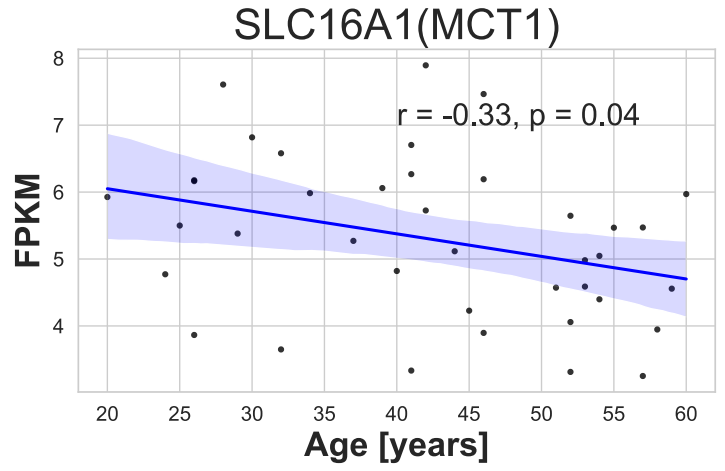


Figure S11

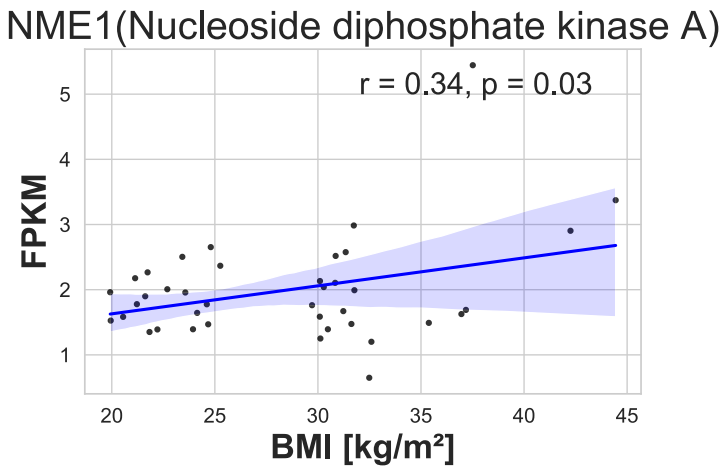
A



B



C



D

