

Supplementary File 8: Mutant panels showing replicates of *cortex* mutants for each species/race.

H. erato cyrbia - WT



H. erato cyrbia - Cort CRISPR



Figure S8.1: *H. erato cyrbia* wild-type (WT), alongside *cortex* mKO individuals recovered in CRISPR experiments. Dorsal and ventral sides shown for each mutant.

H. erato demophoon - WT



H. erato demophoon - *Cort* CRISPR

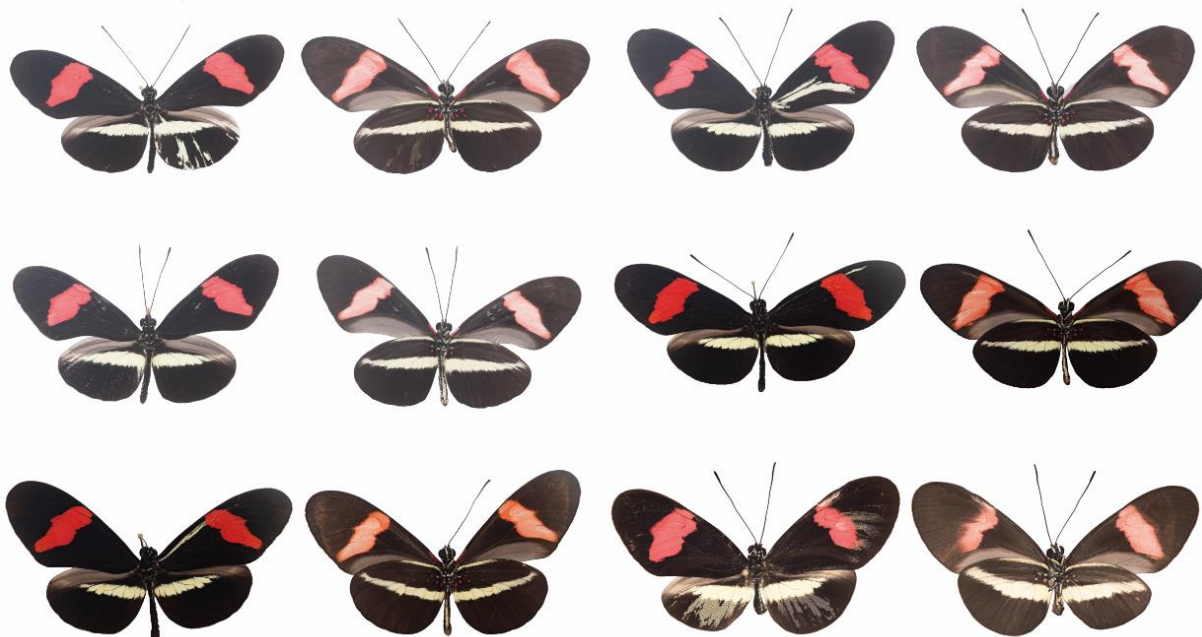


Figure S8.2: *H. erato demophoon* wild-type (WT), alongside *cortex* mKO individuals recovered in CRISPR experiments. Dorsal and ventral sides shown for each mutant.

H. erato hydara - WT



H. erato hydara - *Cort* CRISPR



Figure S8.3: *H. erato hydara* wild-type (WT), alongside *cortex* mKO individuals recovered in CRISPR experiments. Dorsal and ventral sides shown for each mutant.

H. melpomene plesseni - WT



H. melpomene plesseni - Cort CRISPR



Figure S8.4: *H. melpomene plesseni* wild-type (WT), alongside *cortex* mKO individuals recovered in CRISPR experiments. Dorsal and ventral sides shown for each mutant.

H. melpomene cythera - WT



H. melpomene cythera - Cort CRISPR



Figure S8.5: *H. melpomene cythera* wild-type (WT), alongside *cortex* mKO individuals recovered in CRISPR experiments. Dorsal and ventral sides shown for each mutant.

H. hecale melicerta - WT



H. hecale melicerta - Cort CRISPR



Figure S8.6: *H. hecale melicerta* wild-type (WT), alongside *cortex* mKO individuals recovered in CRISPR experiments. Dorsal and ventral sides shown for each mutant.

H. charitonia - WT



H. charitonia - Cort CRISPR



Figure S8.7: *H. charitonia* wild-type (WT), alongside *cortex* mKO individuals recovered in CRISPR experiments. Dorsal and ventral sides shown for each mutant.