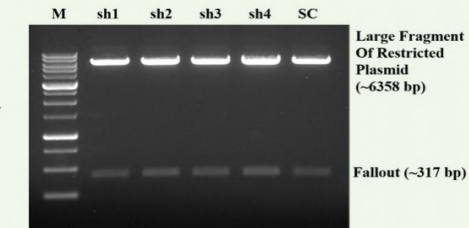
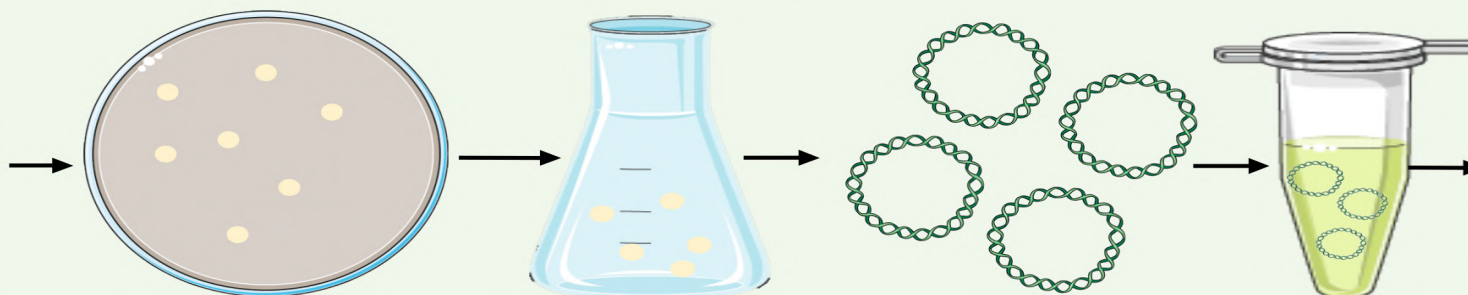
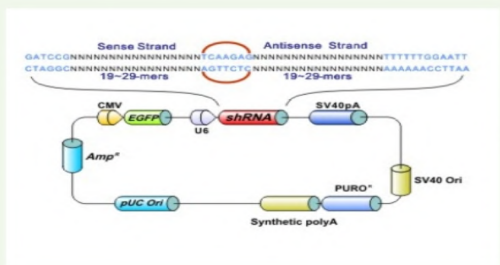


Bacterial Transformation

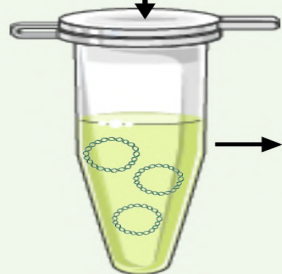


shRNA plasmid targeting
DICER and AAR2

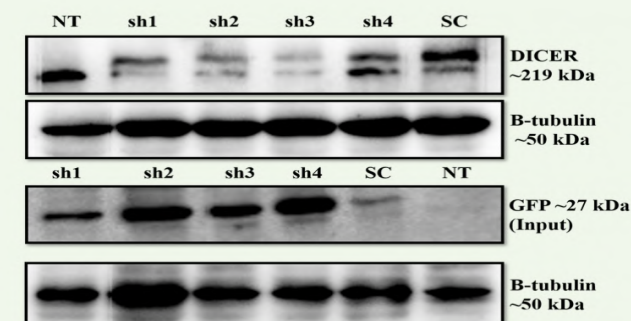
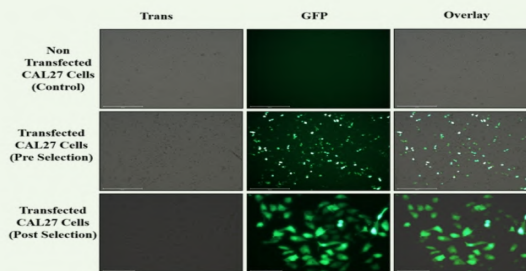
Bacterial transformation and
culture

Isolation of plasmid and
restriction digestion

Transfection and Gene Knockdown



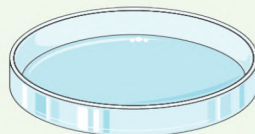
Transformed Cells



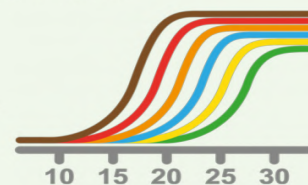
Transfection in CAL27 cell line
and selection of transformants

Confirmation of knockdown through fluorescence microscopic
imaging and immunoblotting

Transformed DICER -/-
and AAR2 -/- CAL27 cells



Mature miRNA level Detection



Isolation of miRNA, cDNA
conversion, end point PCR
and qPCR

Figure S19: Study schemes. Schematic representation of the study depicting the workplan and consecutive steps.