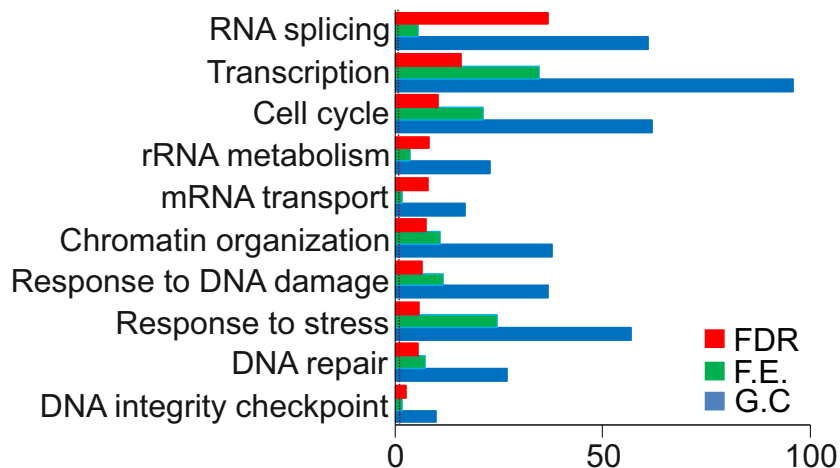
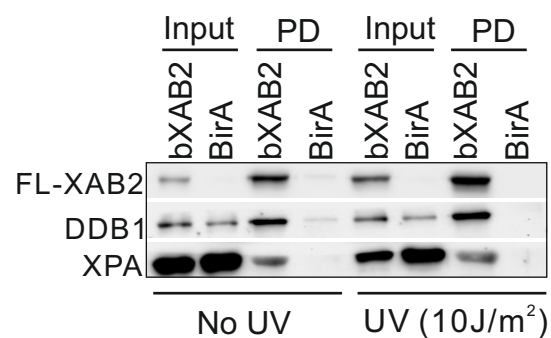


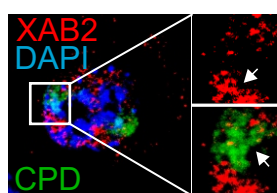
A.

Biological processes (GO):FDR≤0.05


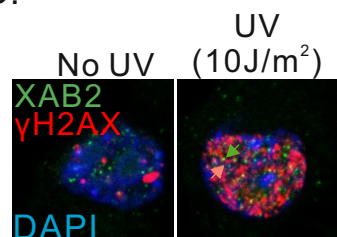
B.



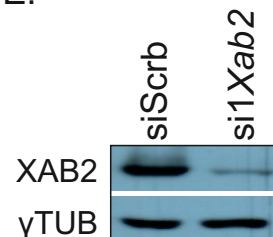
C.



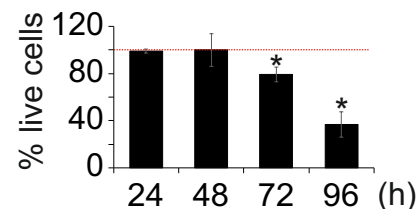
D.



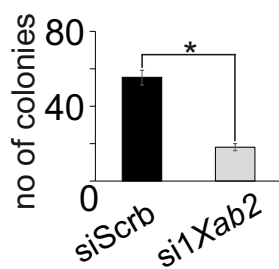
E.



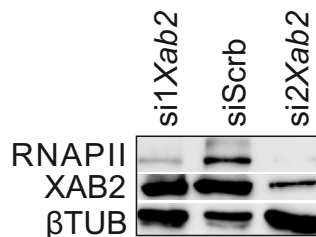
F.



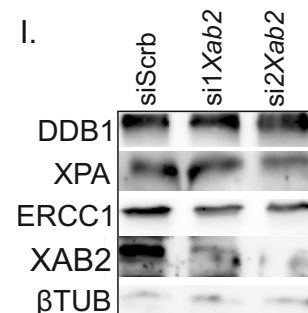
G.



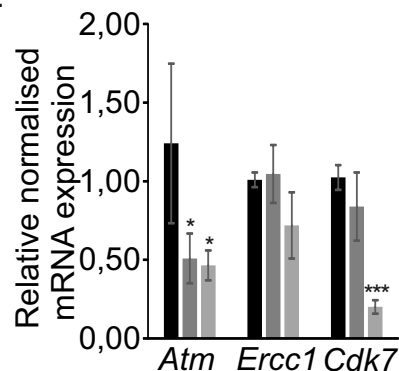
H.



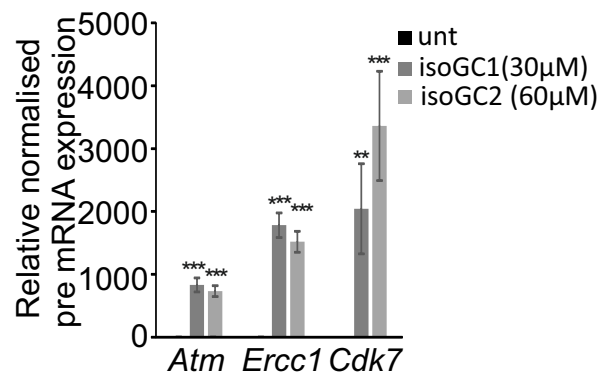
I.



J.



K.



L.

	Considered	Pdiff>0.8	Volvano (all non redudant)	Violin plots (IR, EX, Pdiff >0.8)	Differentially spliced Pdiff>0.8 and ΔPSI >5
IR	63180	849	63180	849	262
EX	22160	741	22160	741	358
Alt3'	23892	434	10957		89
Alt5'	17103	240	7752		65
Total	126335	2264	104049	1590	774