

Figure 2 - Supplement 1

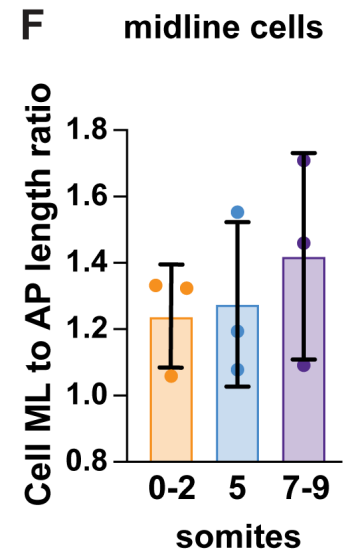
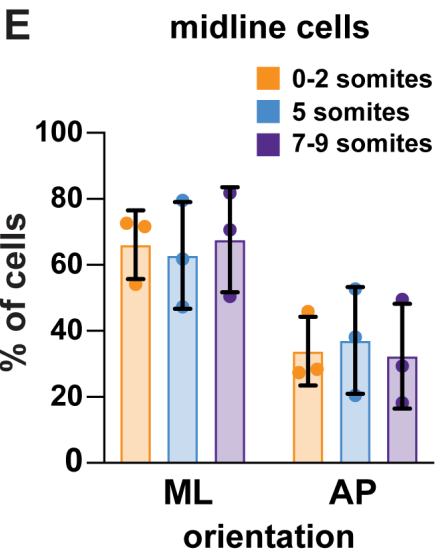
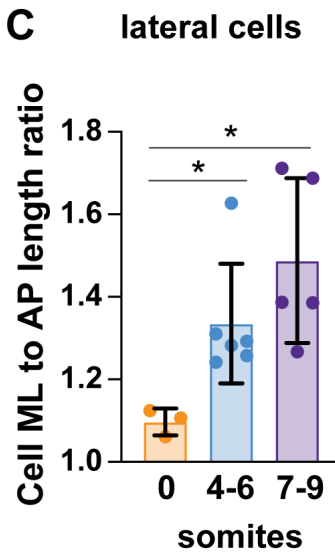
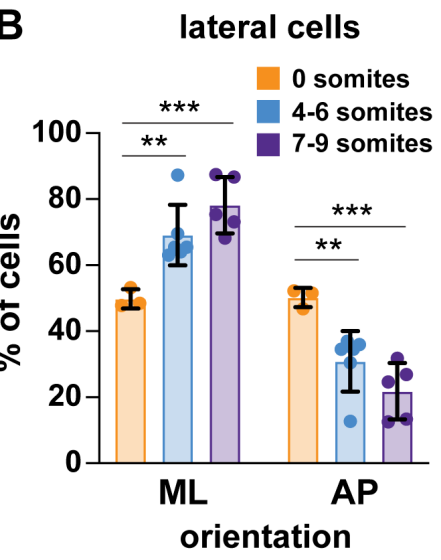
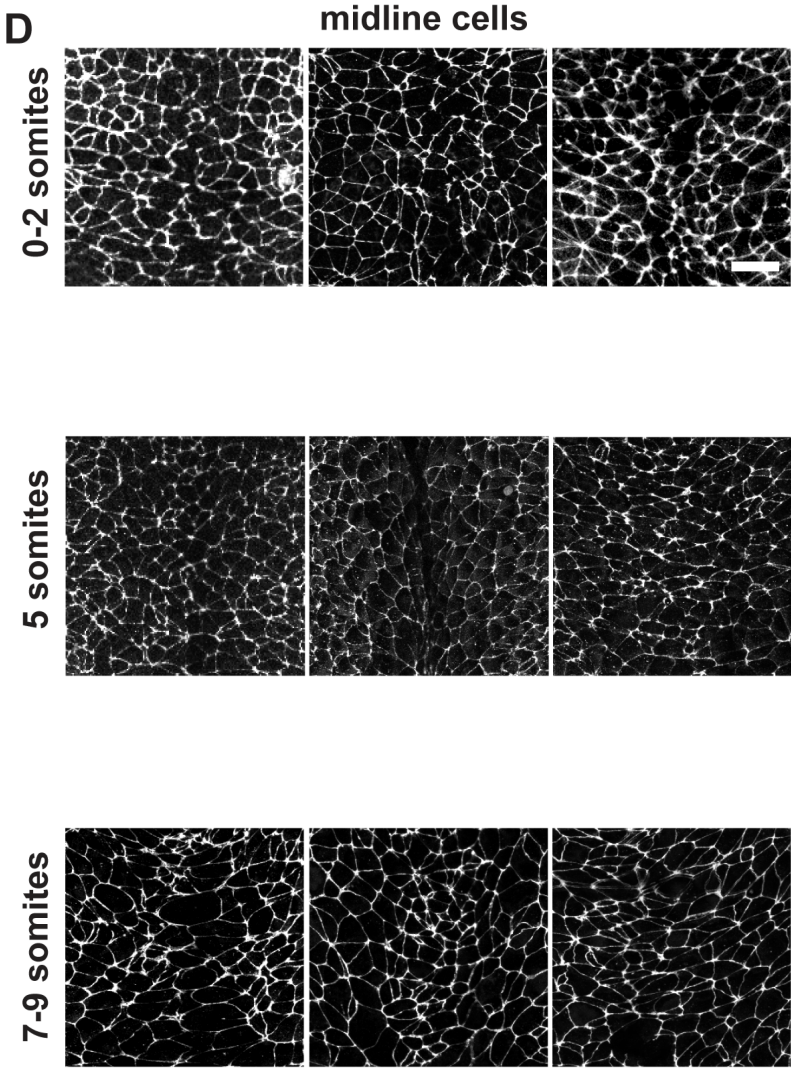
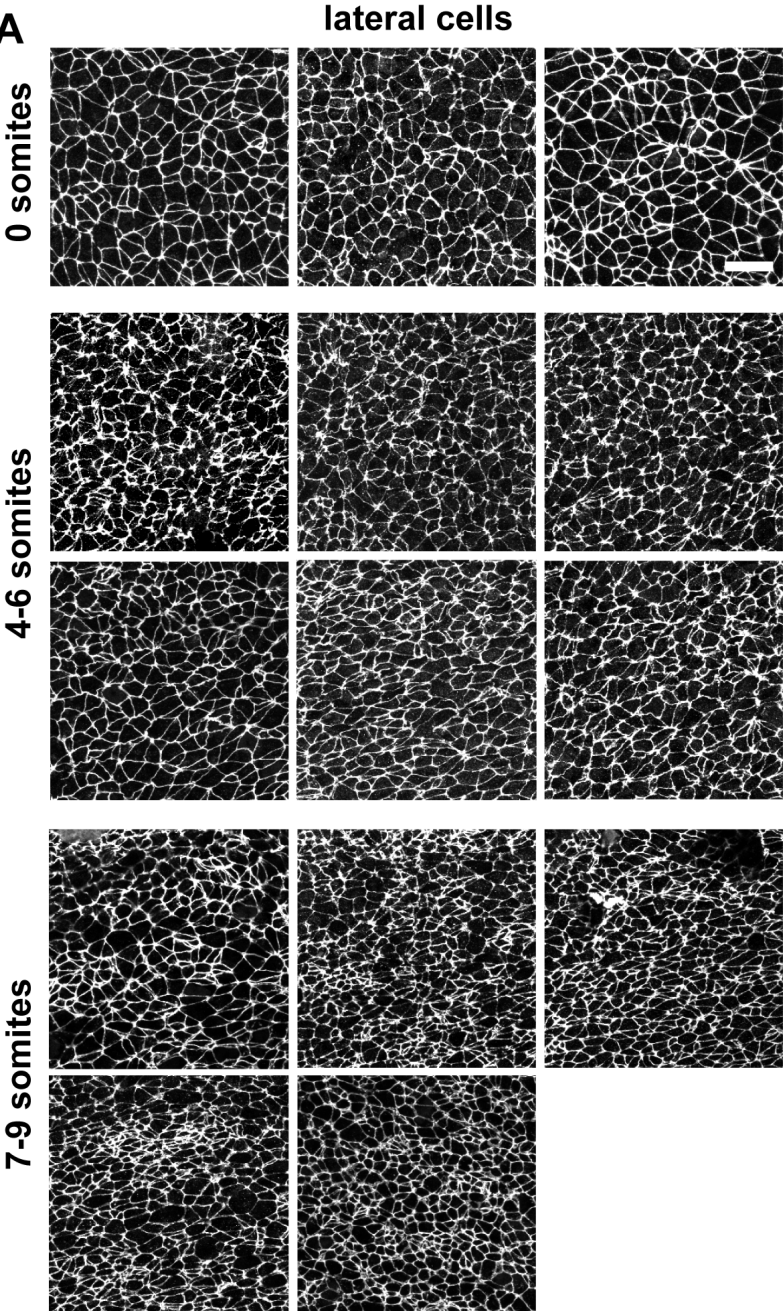


Figure 3 - Supplement 1

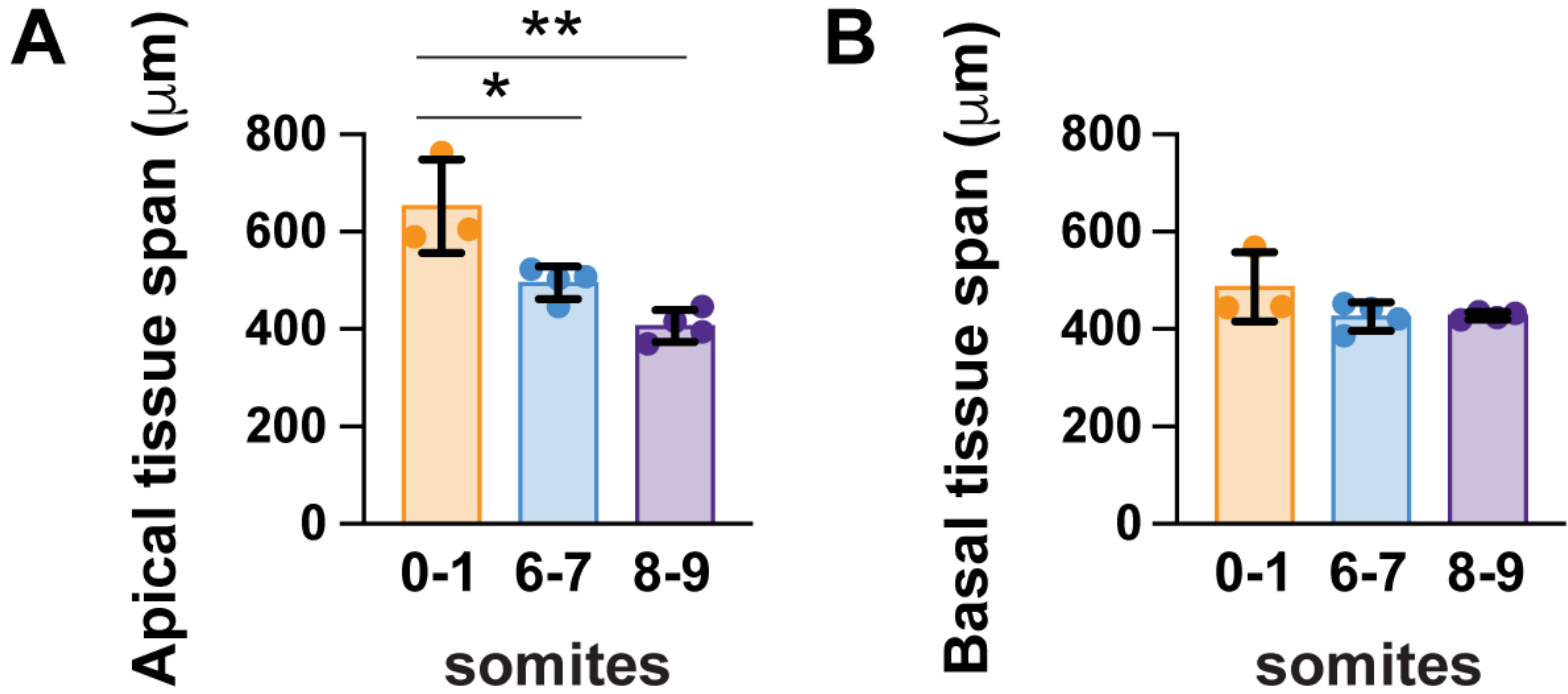


Figure 3 - Supplement 2

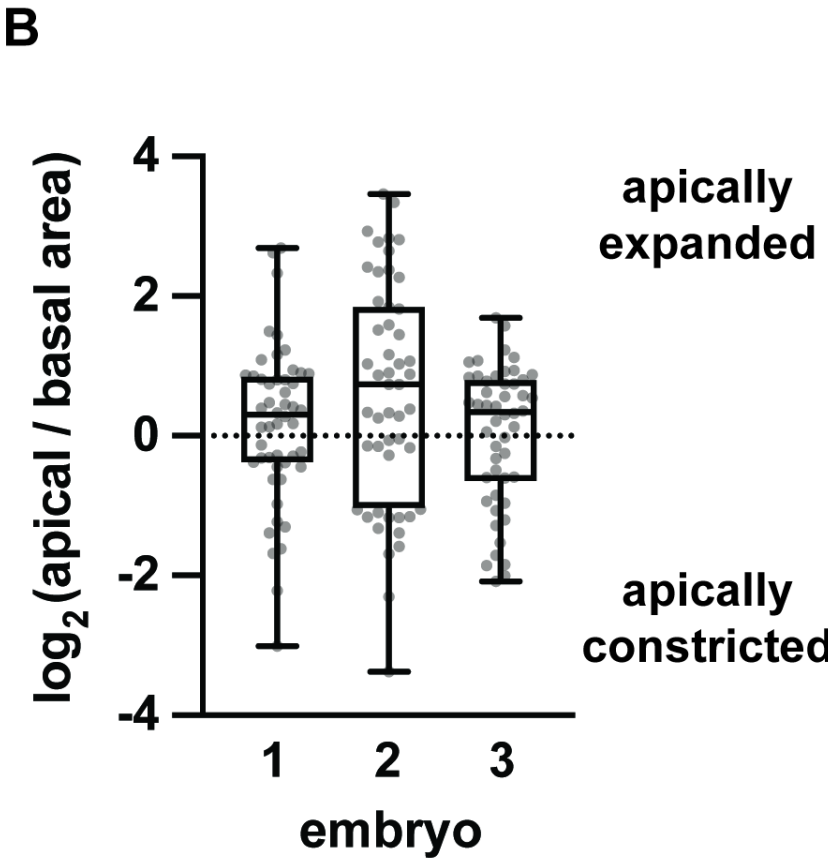
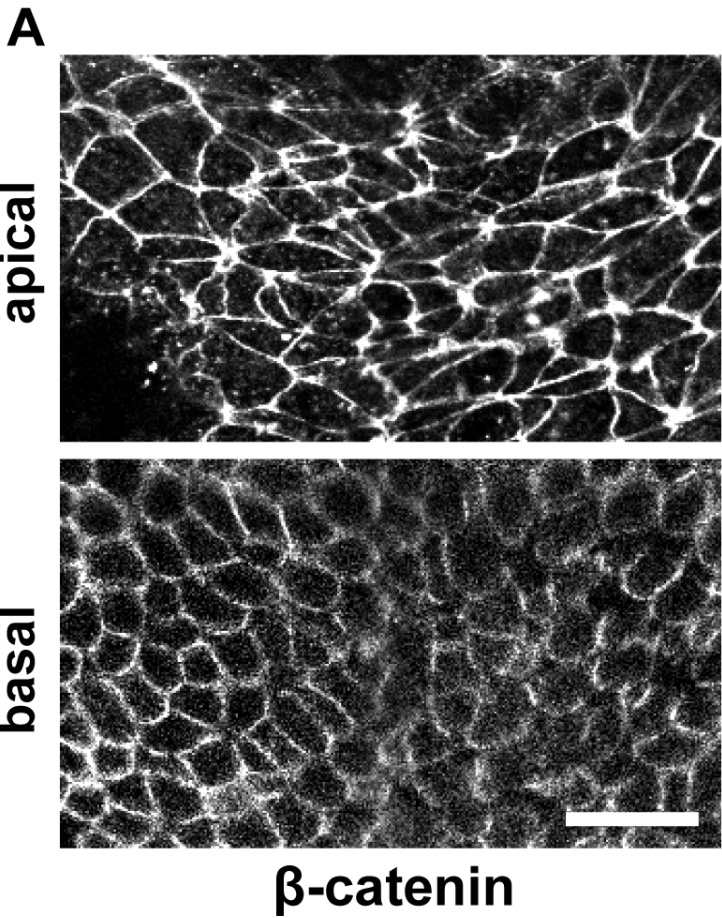


Figure 4 - Supplement 1



C > A transversion at nt 115,899,529 **wild type** ...GAA GCA TAC CAG ATC...
 ... E A Y Q I ...

Tyr > premature stop at 575 of 1,138 aa **TR2** ...GAA GCA TAA CAG ATC...
 ... E A * ...



C > A transversion at nt 66,242,780 **wild type (reverse)** ...GTT CTG TGC CTT GAG...
 ... V L C L E ...

Cys > premature stop at 187 of 1,315 aa **TF2 (reverse)** ...GTT CTG TGA CTT GAG...
 ... V L * ...

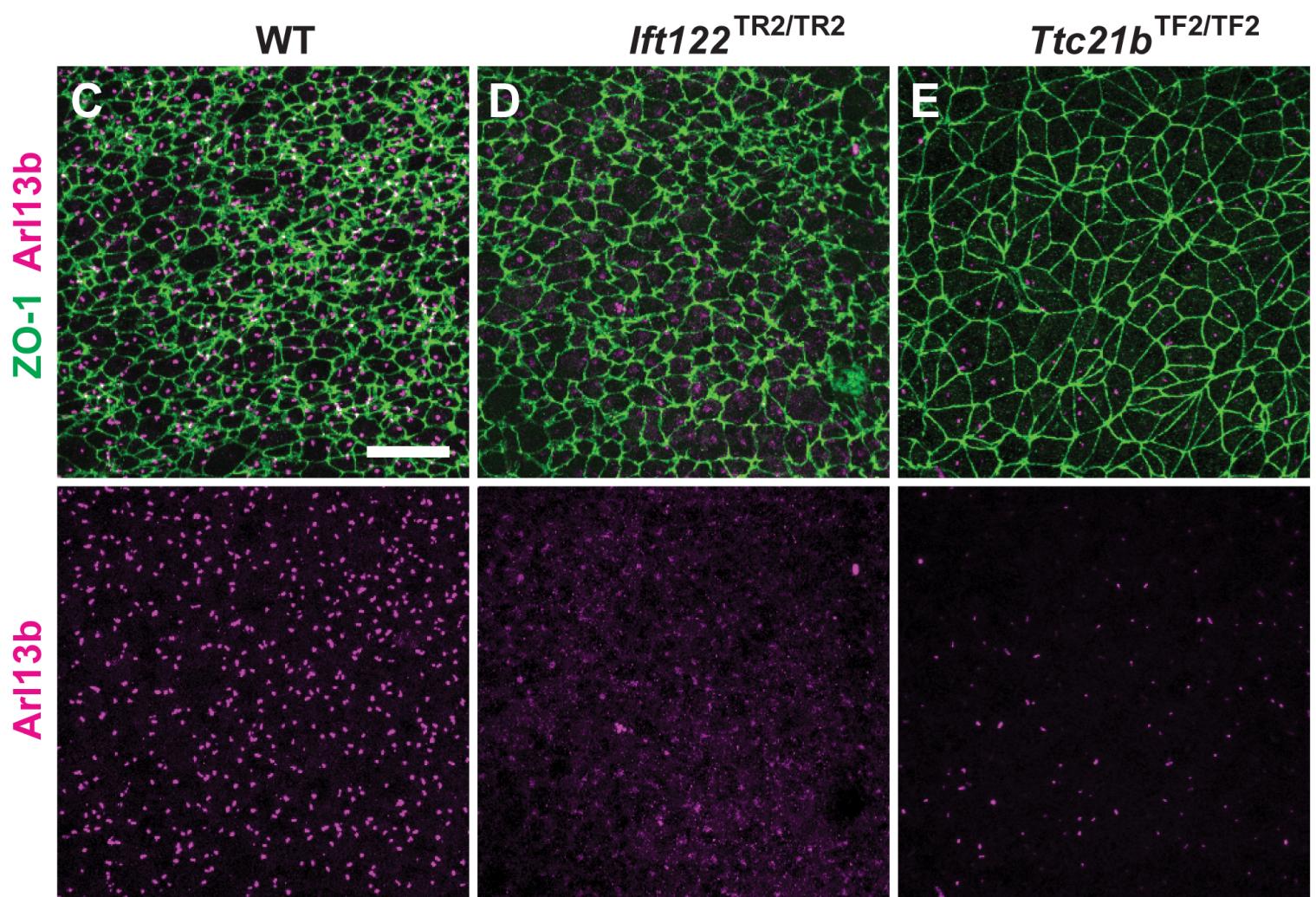
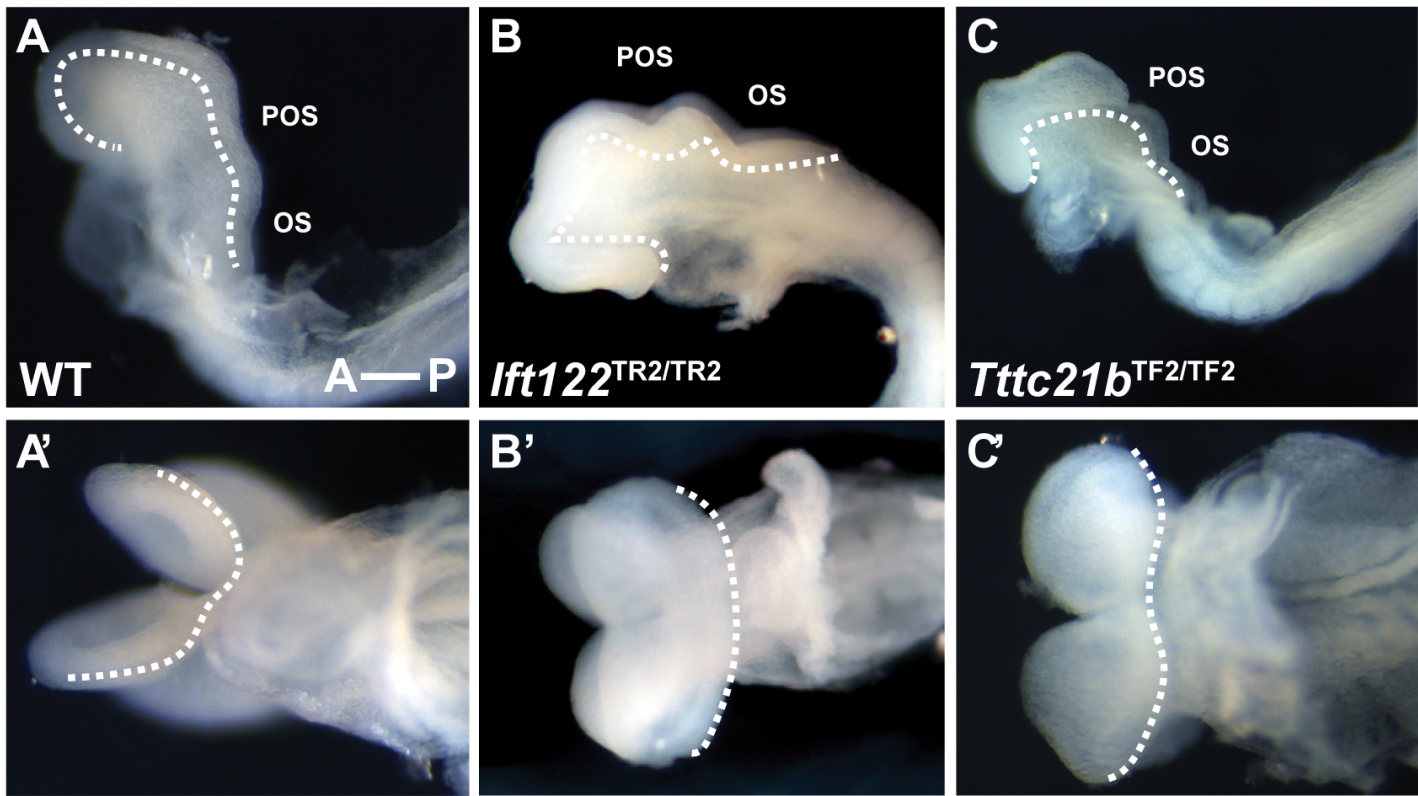
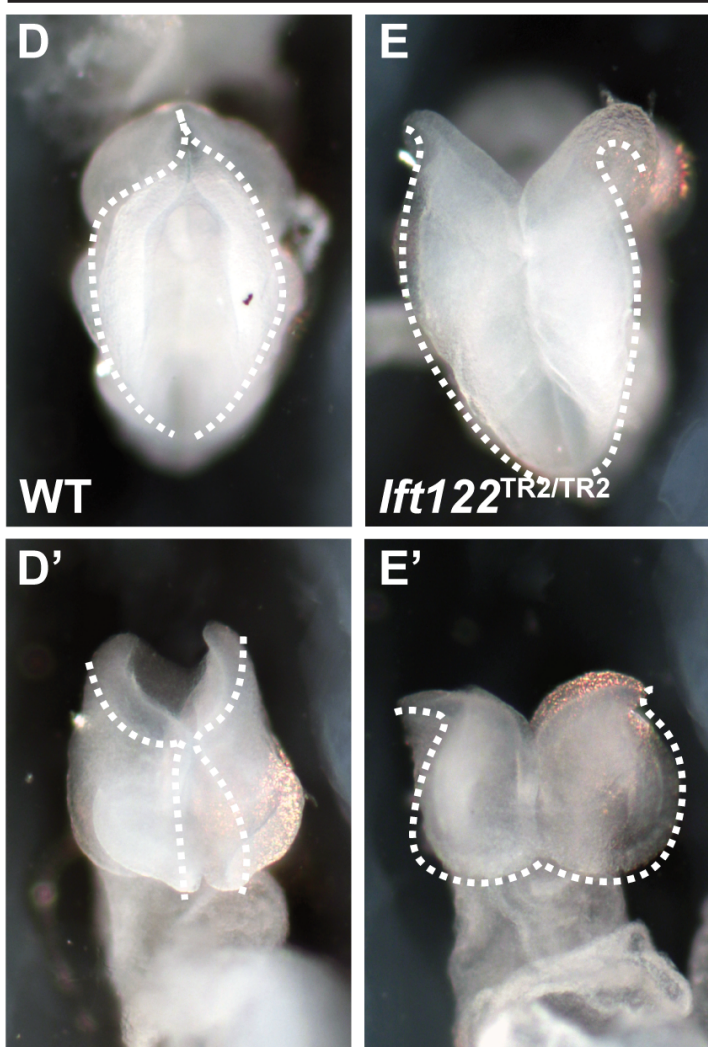


Figure 4 - Supplement 2

7 somites (E8.5)



12 somites (E8.75)



E9.5

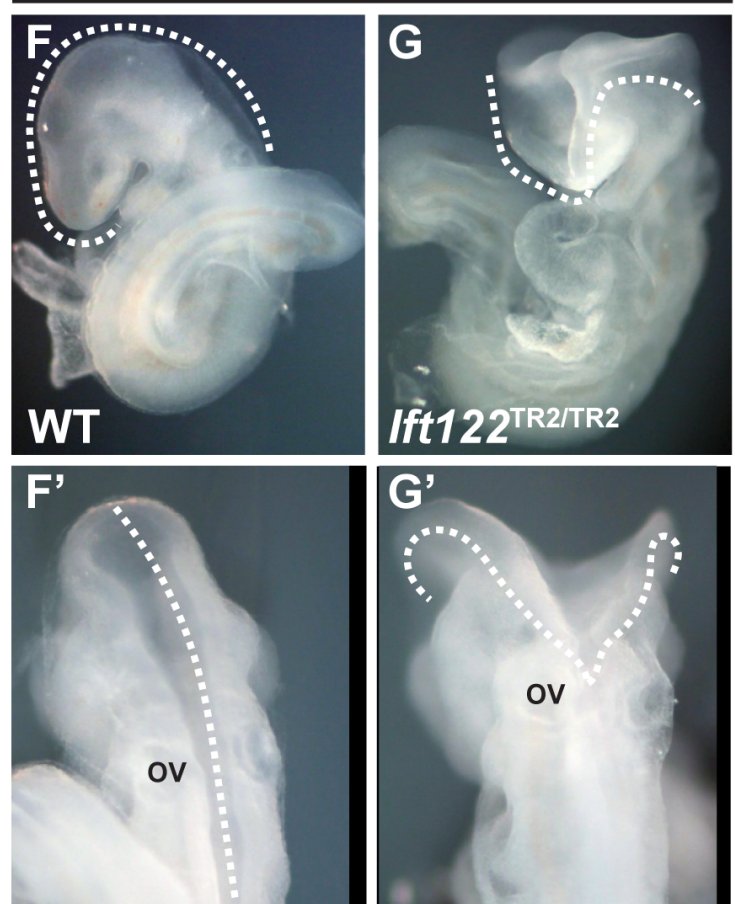


Figure 4 - Supplement 3

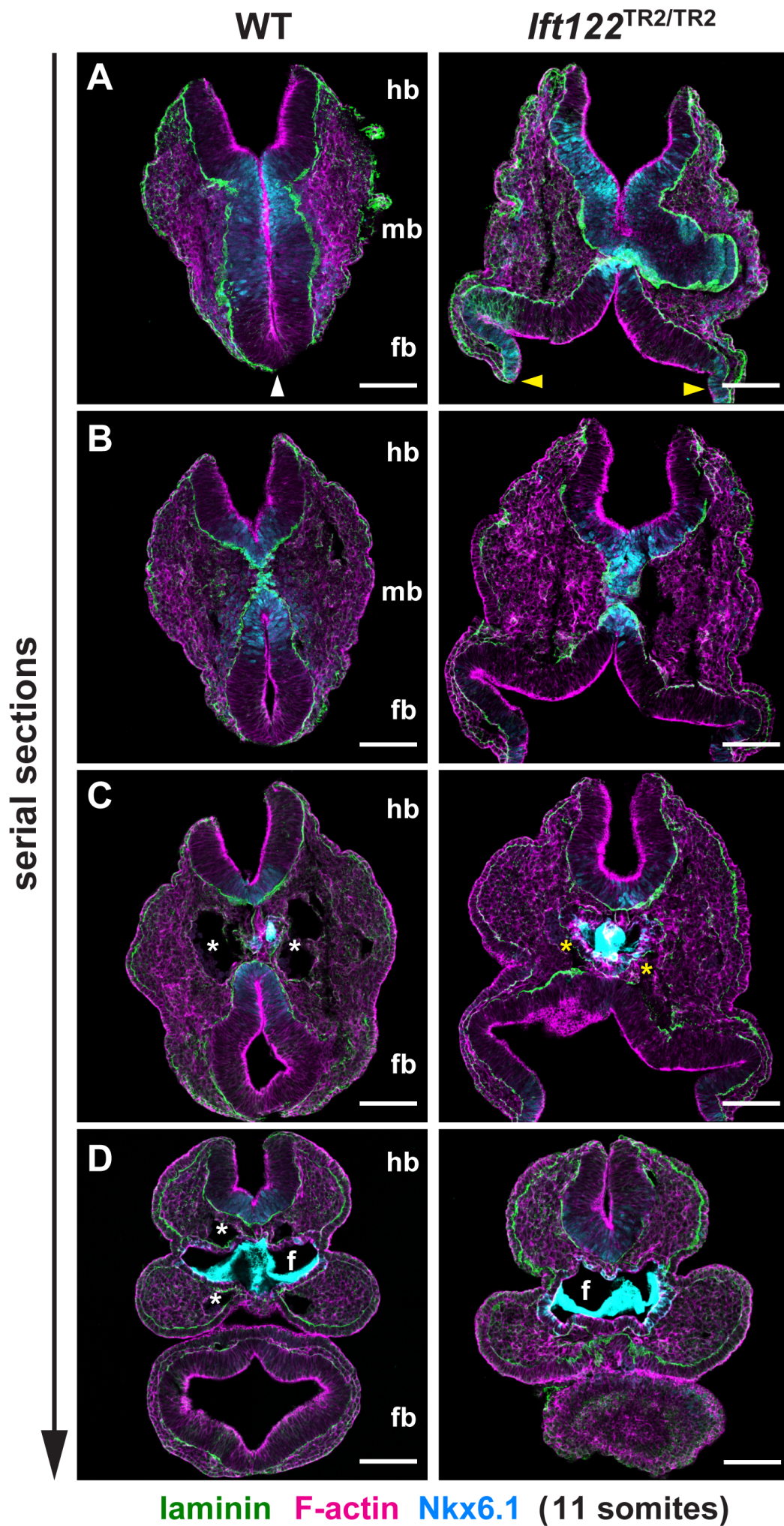


Figure 4 - Supplement 4

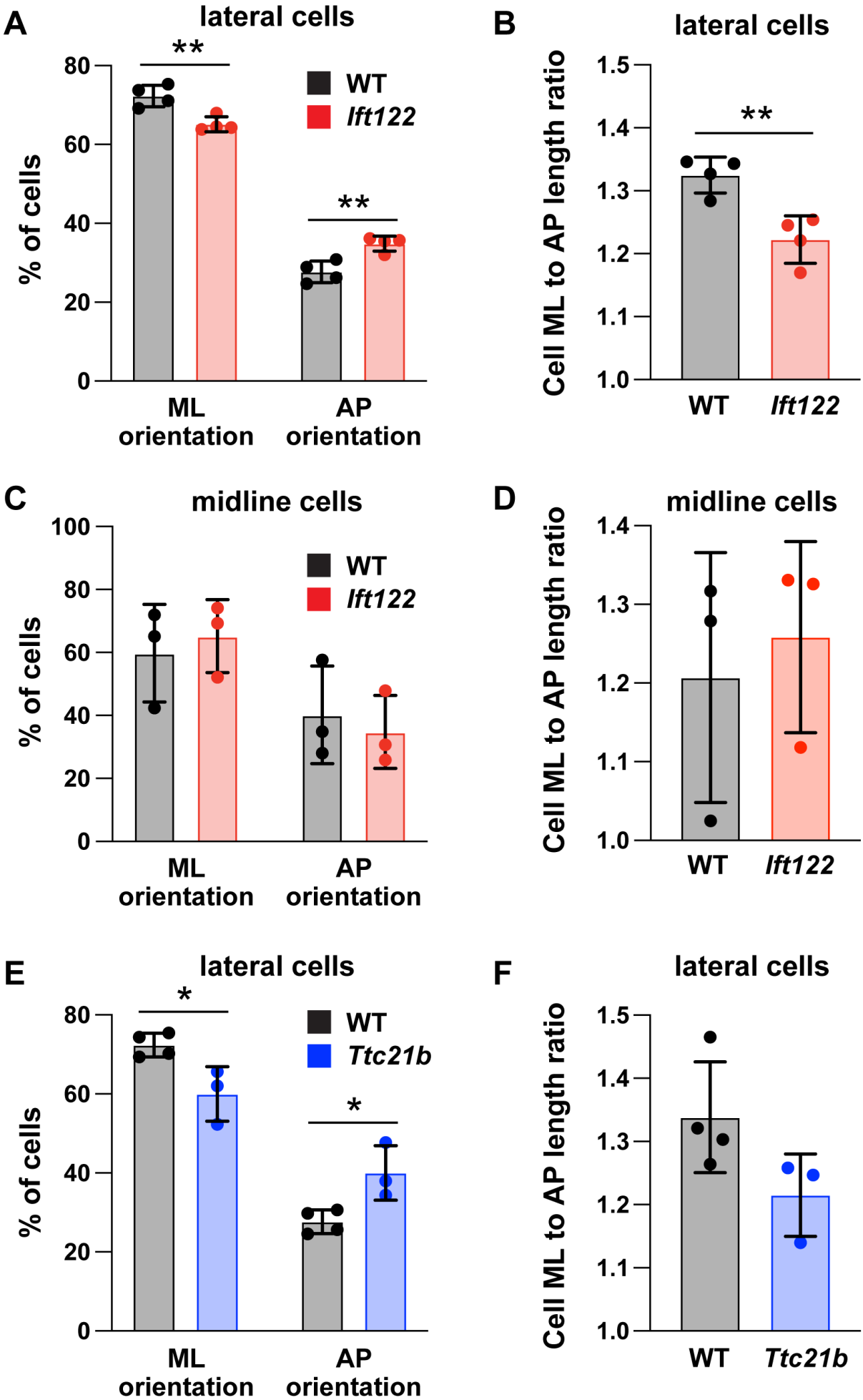


Figure 4 - Supplement 5

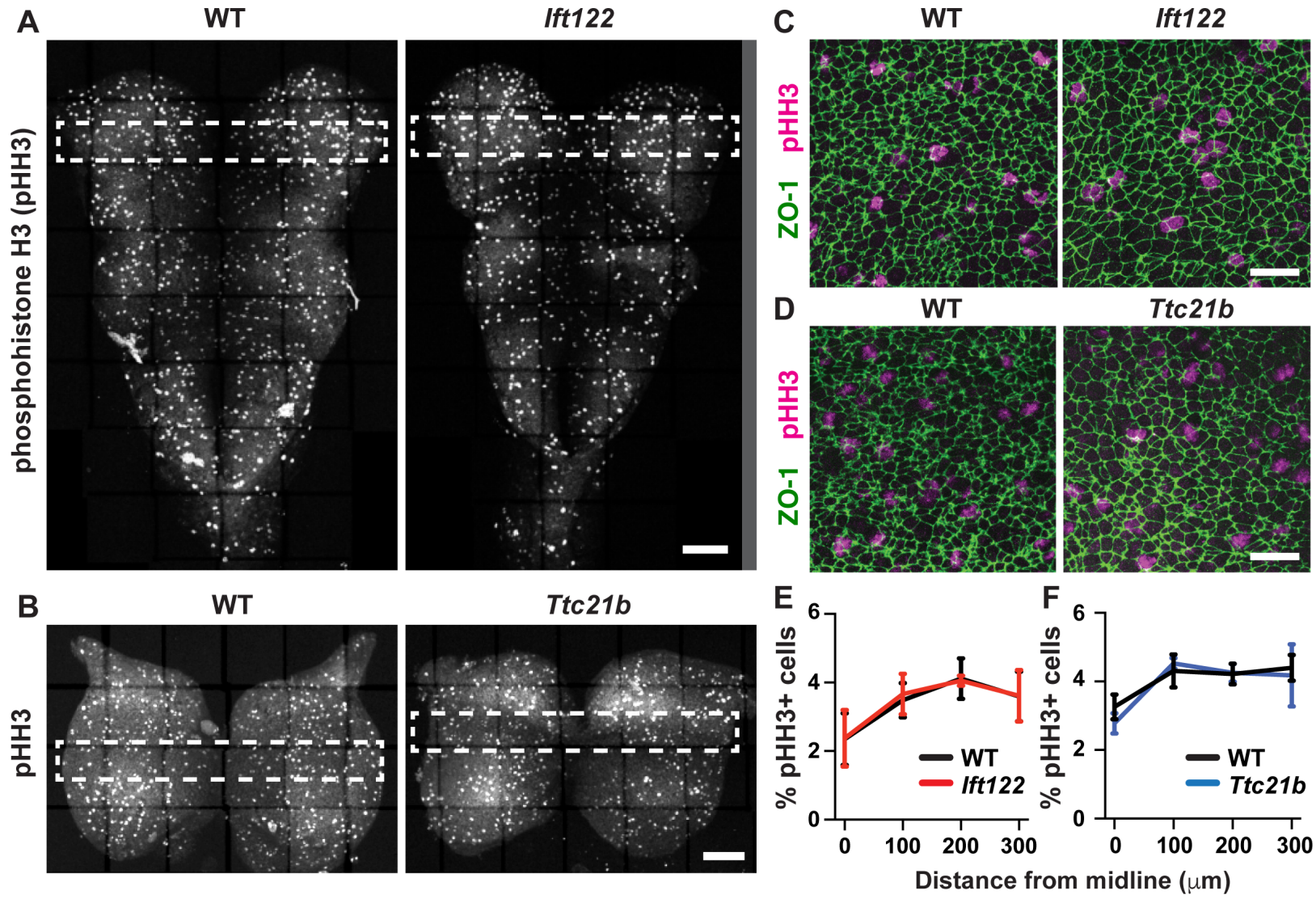


Figure 4 - Supplement 6

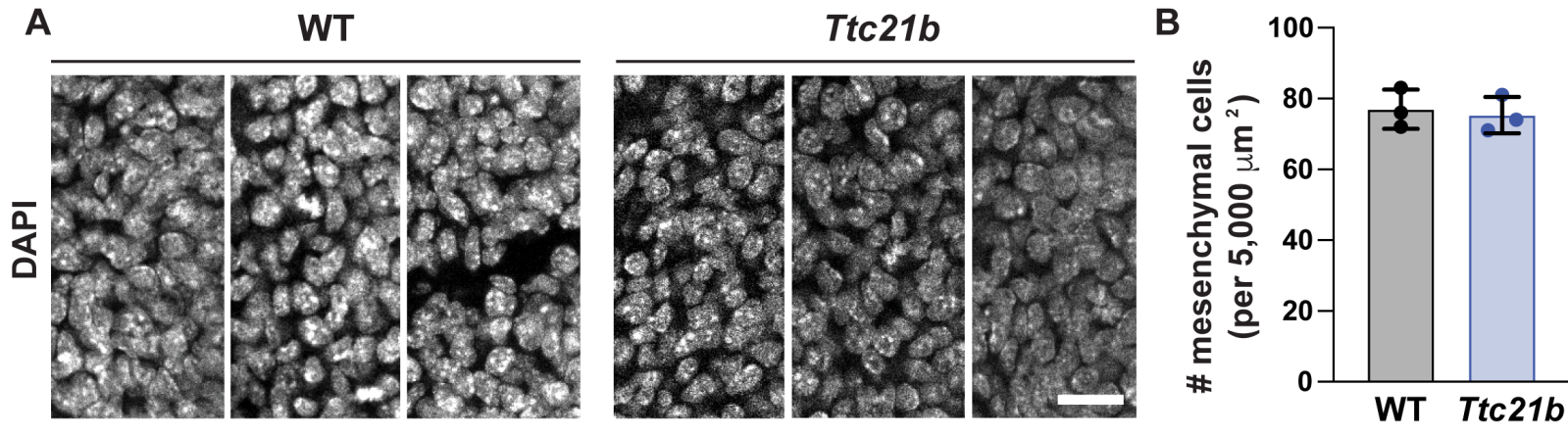


Figure 5 - Supplement 1

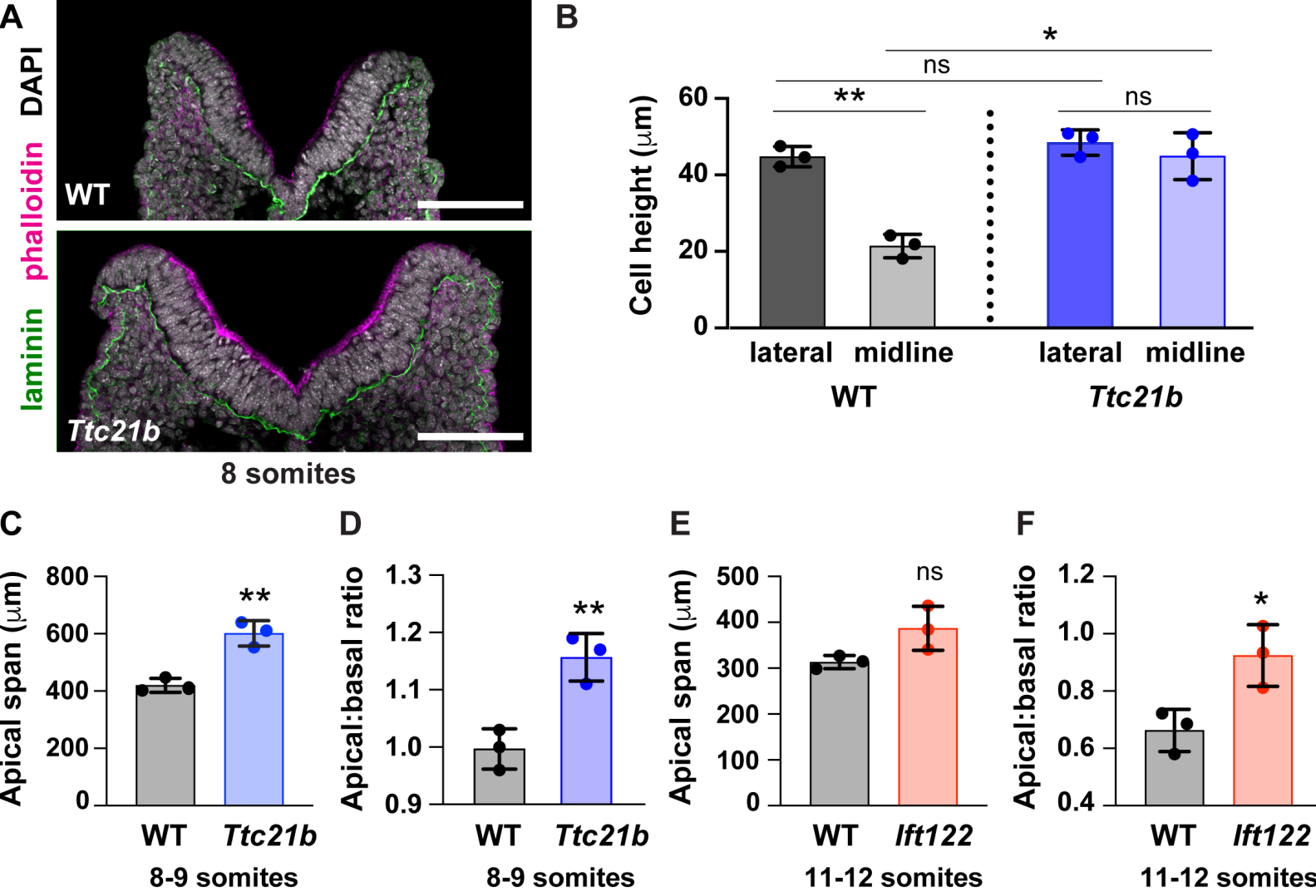


Figure 8 - Supplement 1

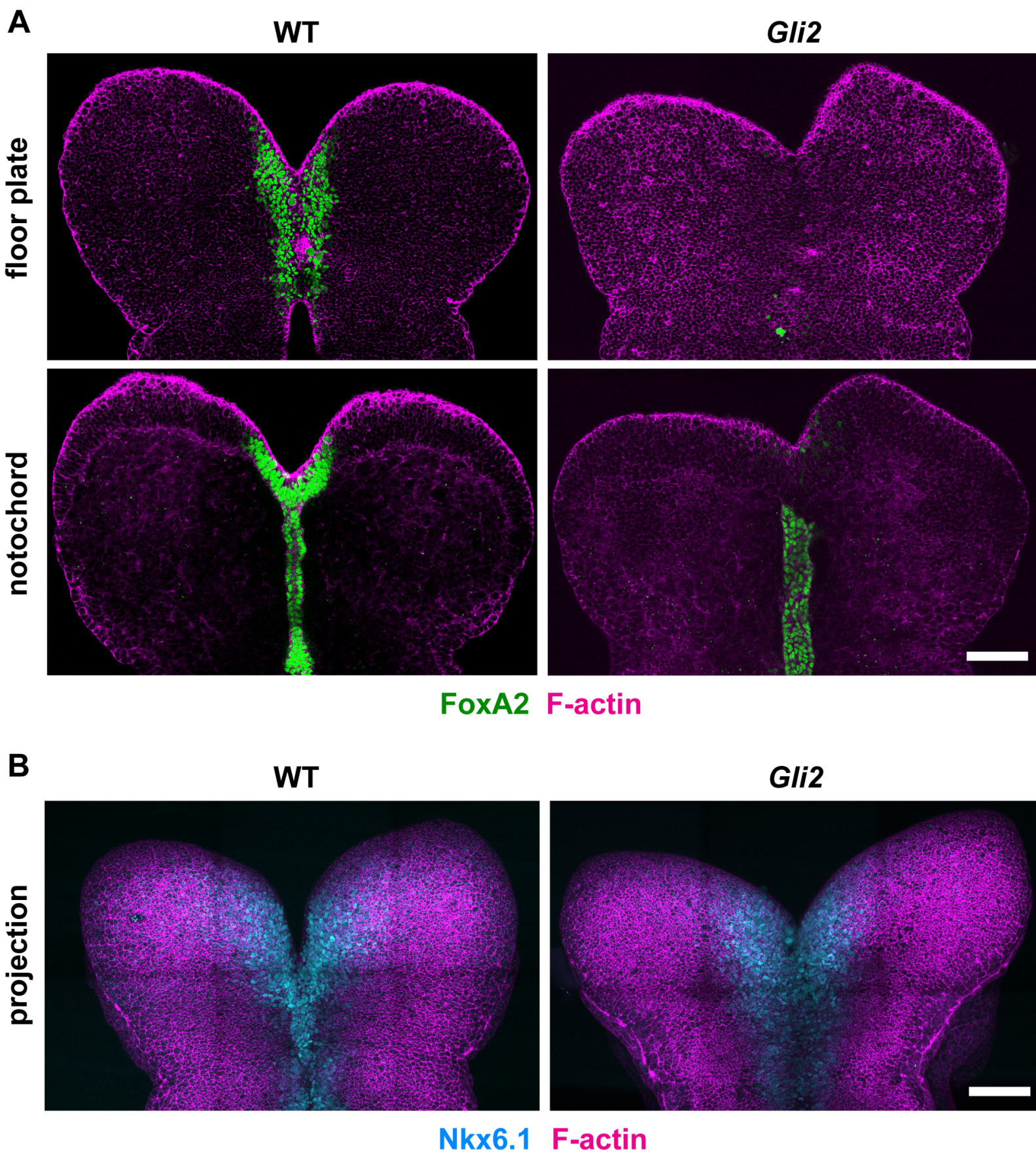


Figure 8 - Supplement 2

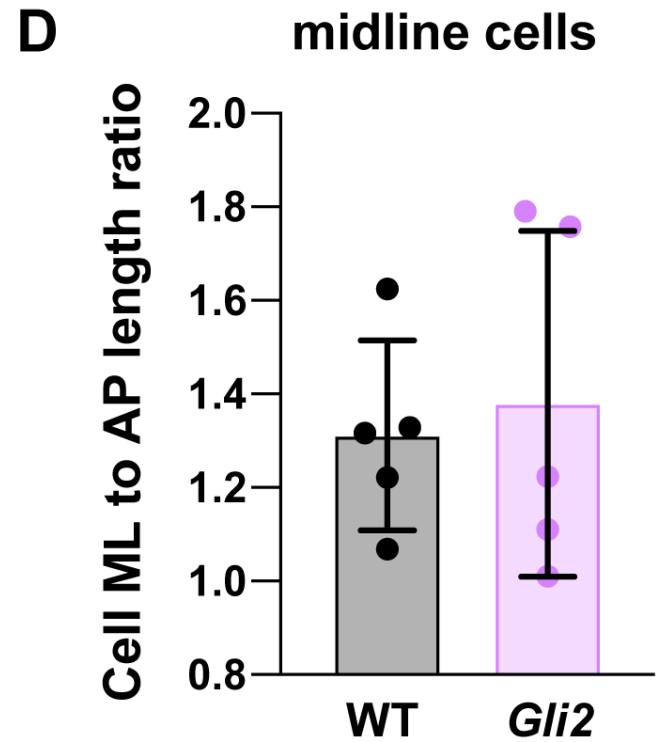
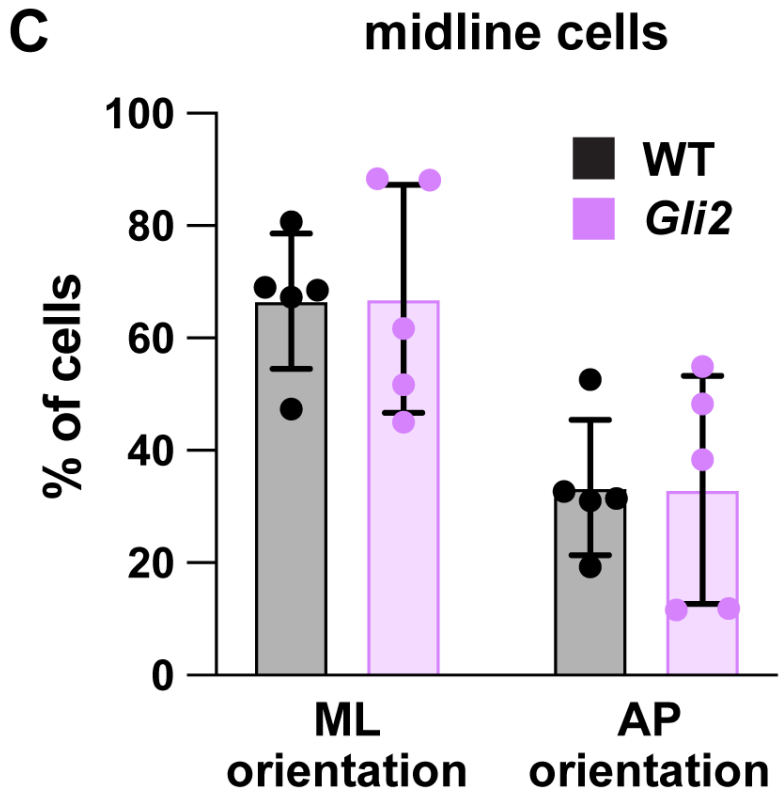
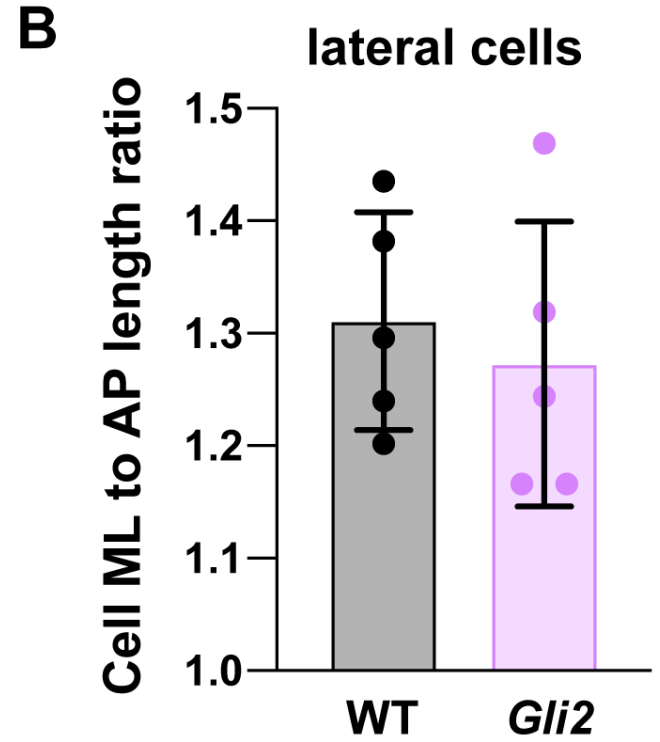
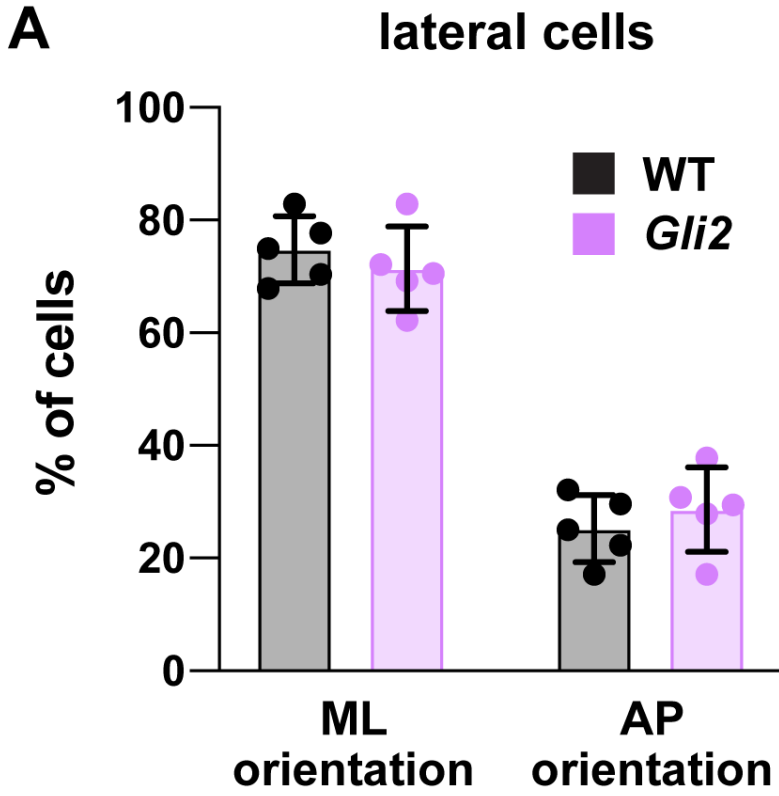


Figure 9 - Supplement 1

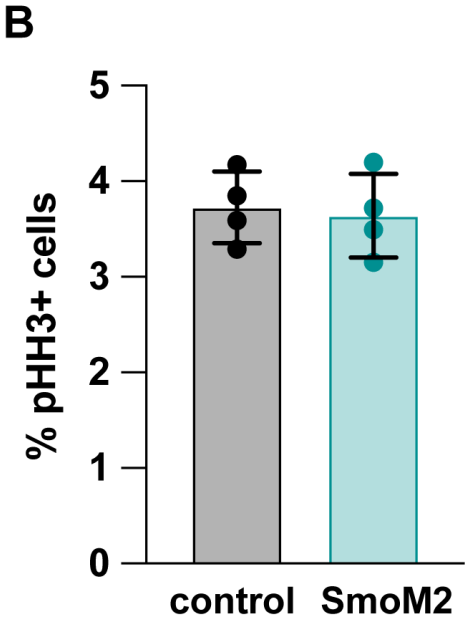
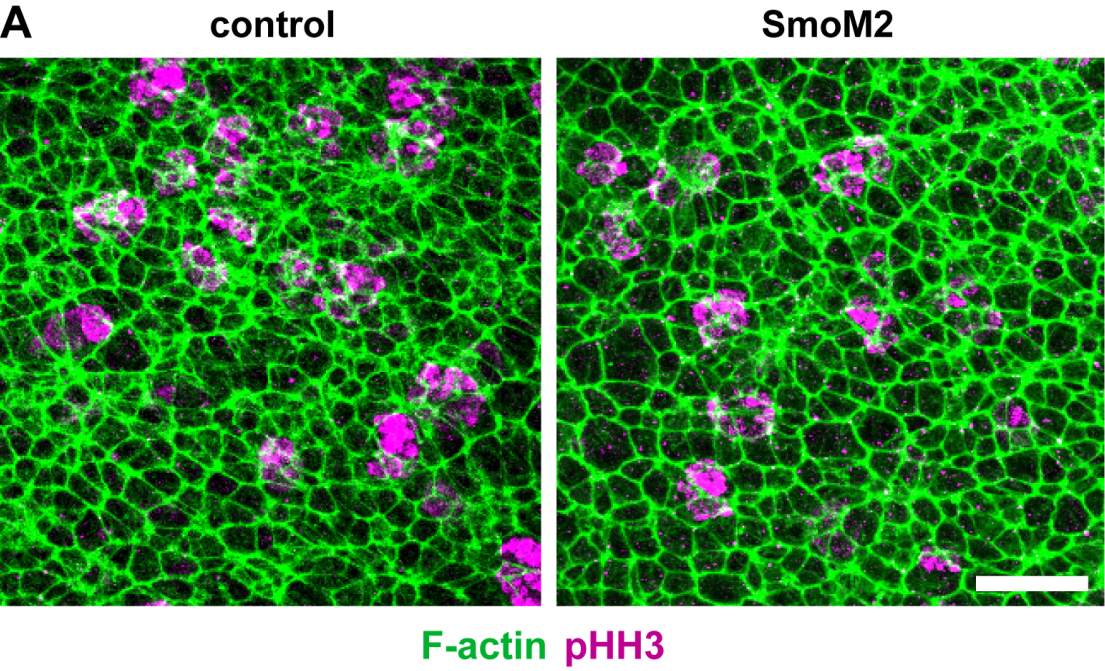


Figure 9 - Supplement 2

