

Figure S1. Count of differences is gene presence between ST38 isolate(s) of a traveller and all other ST38 isolates (COMBAT study and external databases). Red crosses indicate the closest match of another ST38 isolate isolated from the same traveller, 12 months later. Center line: median; box: interquartile range; whiskers: 1.5x interquartile range; points: outliers.

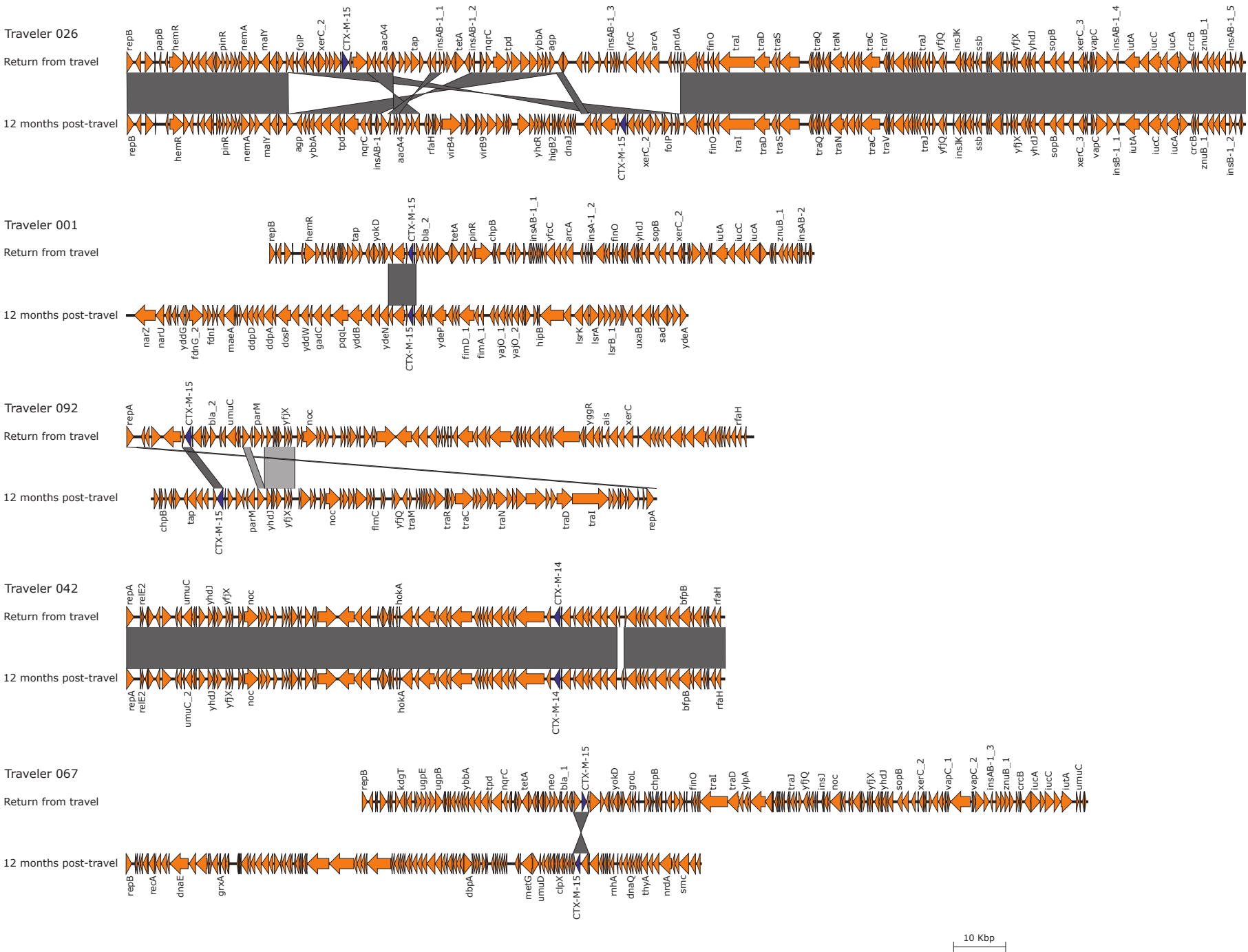


Figure S2. Alignment of plasmids isolated twelve months apart from the same traveller. Dark purple arrows indicate the ESBL gene, while orange arrows indicate all other open reading frames. Grey boxes indicate alignable segments between plasmids, with at least 99% identity.

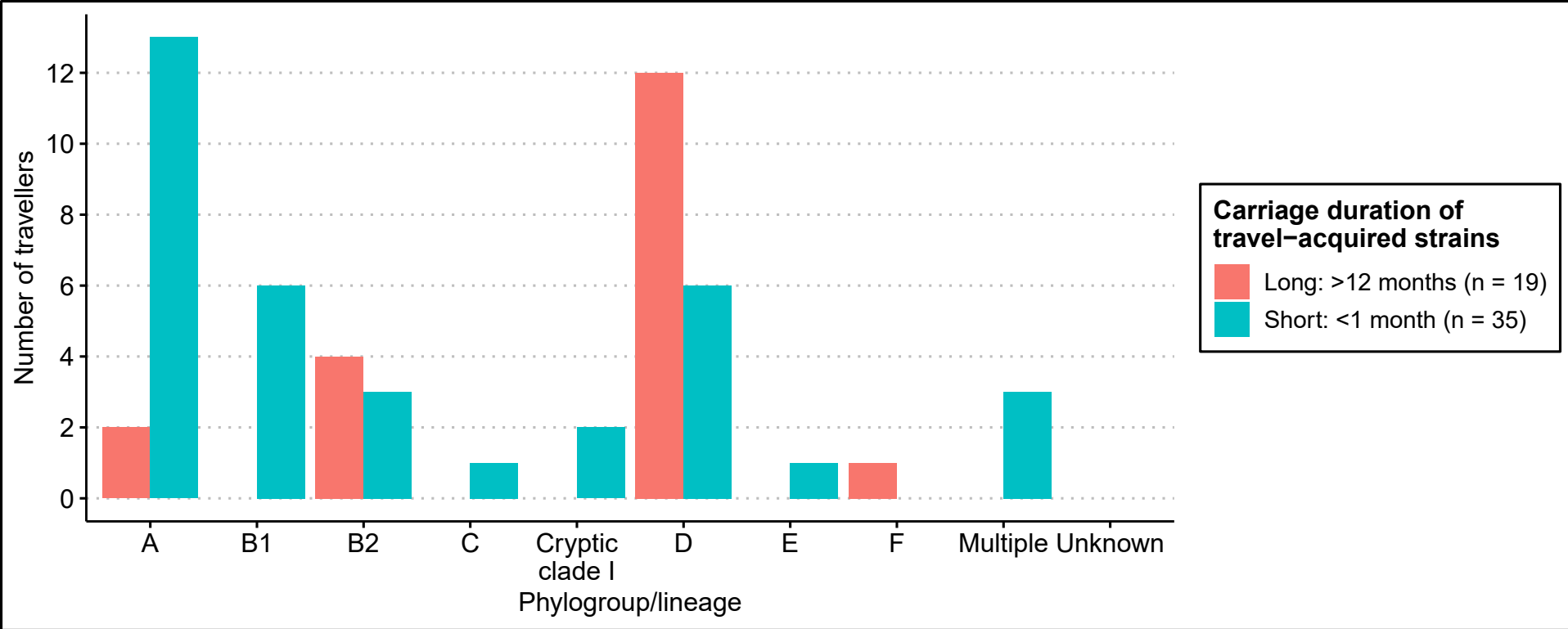


Figure S3. Phylogroup comparison, when ST38 isolates are included that could be typed on accessory gene profile.

Table S1. Characteristics of long-term and short-term carriers. Matching was performed on sex, age and travel destination. These characteristics are depicted in bold. Data are number (%) for all characteristics except age, which is median (IQR).

		Long-term carriers (n = 28)*	Short-term carriers (n = 54)*
	Male	10 (35.7%)	19 (35.2%)
	Age	49.1 (37.4-56.5)	49.5 (36.0-56.6)
Continent visited during index travel	Africa	2 (7.1%)	4 (7.4%)
	Asia	24 (85.7%)	46 (85.2%)
	Europe	0 (0%)	0 (0%)
	North and South America	2 (7.1%)	4 (7.4%)
	Oceania	0 (0%)	0 (0%)
	Admitted to hospital during index travel	0 (0%)	0 (0%)
Travel outside Netherlands after return from index travel	Within 1 month after return from index travel	5 (18.5%)	7 (14.3%)
	Travel to same country as index travel, within 1 month after return from index travel	1 (3.7%)	0 (0%)
	Within 1 to 3 months after return from index travel	8 (29.6%)	16 (34.0%)
	Travel to same country as index travel, within 1 to 3 months after return from index travel	0 (0%)	1 (2.1%)
	Within 3 to 6 months after return from index travel	13 (48.1%)	22 (46.8%)
	Travel to same country as index travel, within 3 to 6 months after return from index travel	0 (0%)	1 (2.1%)
	Within 6 to 12 months after return from index travel	17 (65.4%)	30 (69.8%)
	Travel to same country as index travel, within 6 to 12 months after return from index travel	1 (3.7%)	1 (2.3%)
Antibiotic usage	Within 3 months before index travel	2 (7.1%)	2 (3.7%)
	During index travel	4 (14.3%)	4 (7.4%)
	Within 1 month after return from index travel	1 (3.6%)	2 (4.1%)
	Within 1 to 3 months after return from index travel	2 (7.1%)	2 (4.0%)
	Within 3 to 6 months after return from index travel	0 (0%)	3 (6.1%)
	Within 6 to 12 months after return from index travel	4 (14.3%)	4 (8.5%)

*Percentages are calculated with missing data excluded, which causes that denominators may vary between characteristics.

Table S3. Accessory gene typing for ST38 isolates from nine travellers. For five out of nine travellers, the closest match was within the same traveller and not with any public isolate.

Isolate (t = 0 months after return)	Isolate (t = 12 months after return)	Differences between isolates	Differences with closest isolate (COMBAT & Enterobase)	Closest match within traveller?
COMB1136	COMB2701	76	76	Yes
COMB1457	COMB2709	52	52	Yes
COMB2056	COMB2770	172	62	No
COMB0880	COMB2629	496	228	No
COMB2023/COMB2024	COMB2780	29	29	Yes
COMB0758	COMB2678	70	70	Yes
COMB1965	COMB2767	101	101	Yes
COMB0857	COMB2685	376	346	No
COMB0549	COMB2589	177	168	No

Table S5. Alignment metrics for plasmids from strains isolated at return from travel (T1) or 12 months after return from travel (T5). ANI = average nucleotide identity, AF = alignment fraction.

Traveler	T1 -> T5		T5 -> T1		Persistent plasmid?
	ANI	AF	ANI	AF	
trav026	99.98	0.84	99.98	0.79	Yes
trav001	100.00	0.07	100.00	0.05	No
trav092	92.39	0.12	92.39	0.15	No
trav042	99.80	0.99	99.80	1.00	Yes
trav067	99.92	0.02	99.92	0.03	No