

SUPPLEMENTARY MATERIAL

Figure S1. Raw data of **Fig.1 – Panel A** western blotting of -20°C freeze/thawed rat hippocampus extracts (lanes used in the main figure are indicated by dotted frames).

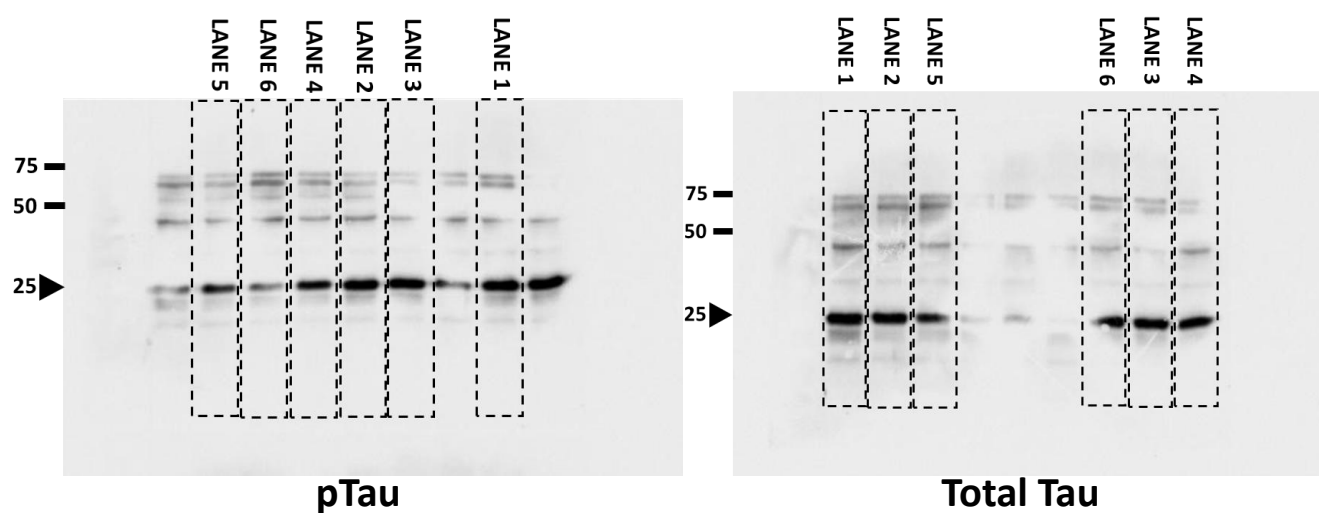


Figure S2. Raw data of **Fig.1 – Panel B** western blotting of -20°C freeze/thawed frontal rat cortex extracts (lanes used in the main figure are indicated by dotted frames).

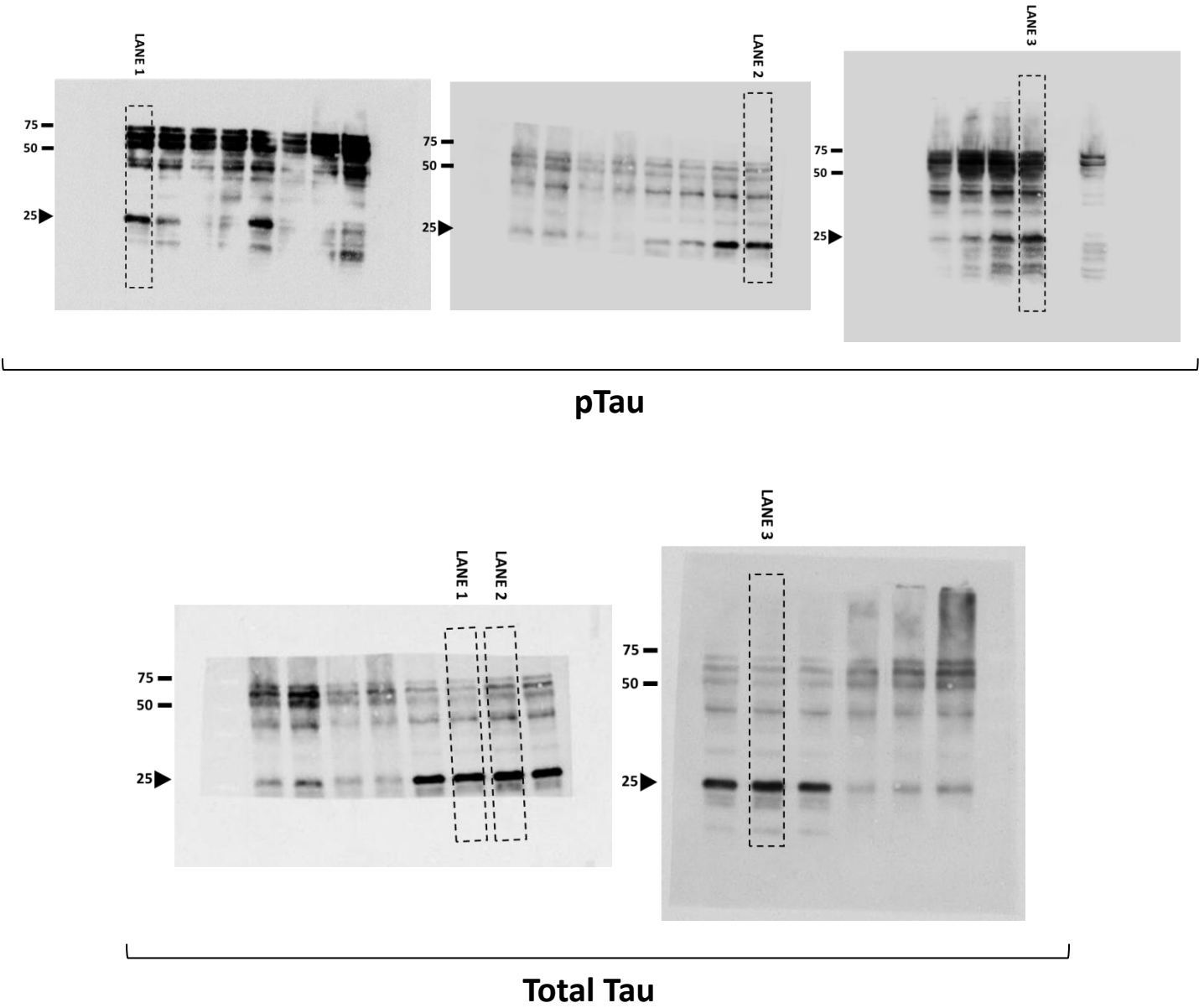


Figure S3. Raw data of **Fig.1 – Panel C** western blotting of fresh rat hippocampus extracts (lanes used in the main figure are indicated by dotted frames).

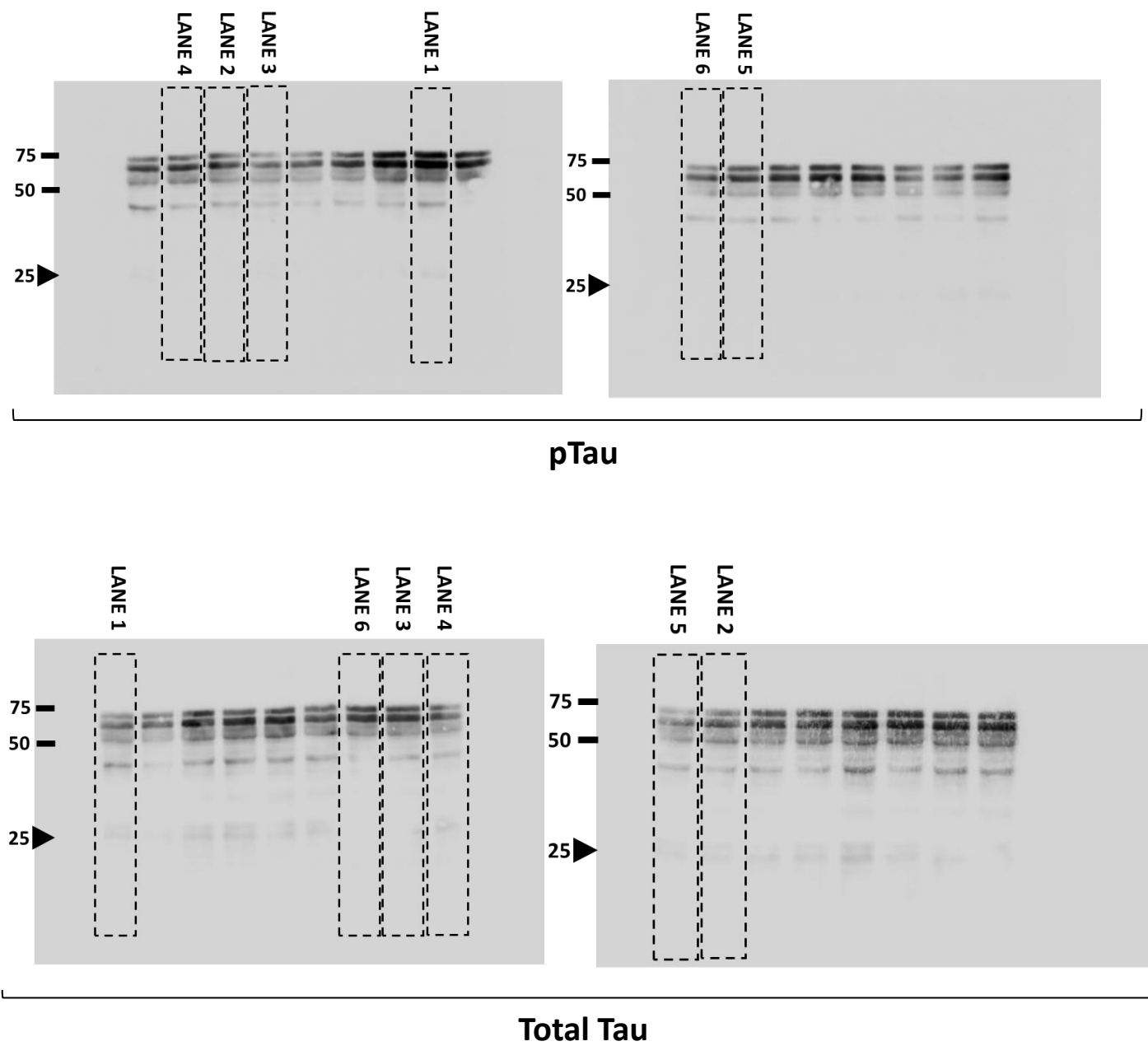


Figure S4. Raw data of **Fig.1 – Panel D** western blotting of fresh rat frontal cortex extracts (lanes used in the main figure are indicated by dotted frames).

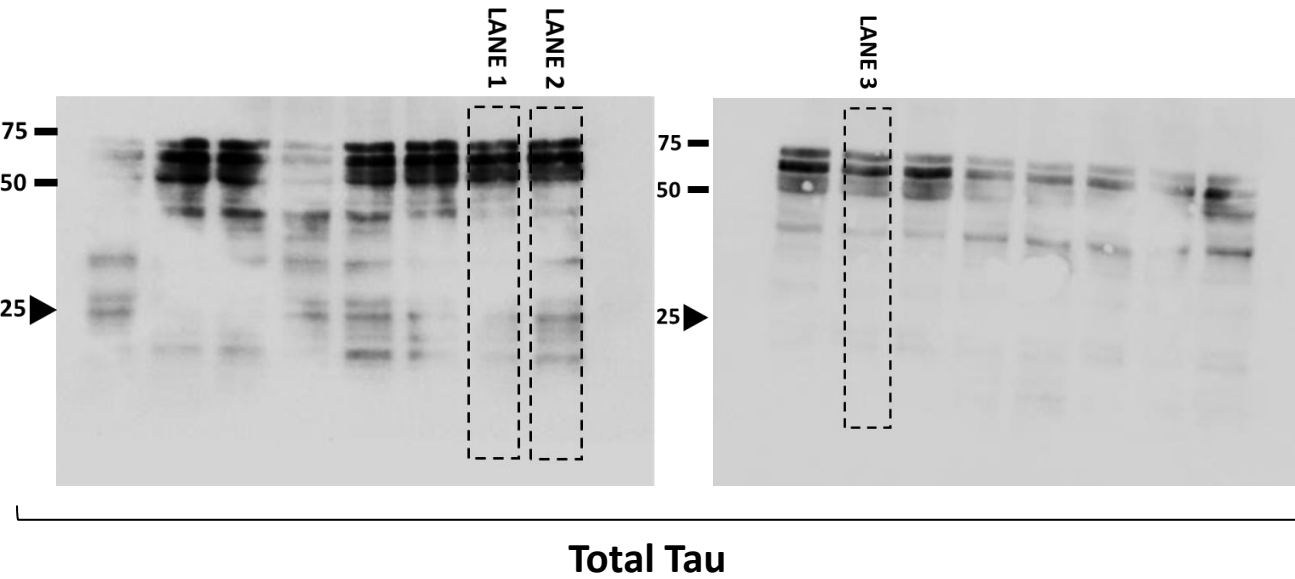
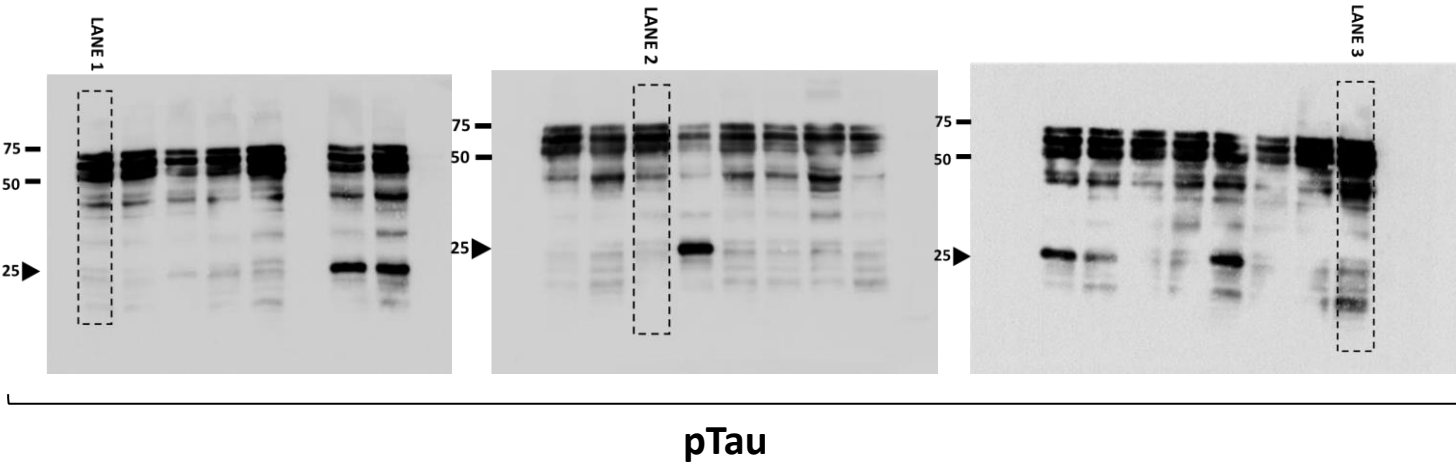


Figure S5. Raw data of **Fig.1 – Panel E** western blotting of freeze/thawed rat frontal cortex extracts (lanes used in the main figure are indicated by dotted frames). Asterisks (*) stand for lanes with rat extracts from other cerebral tissue.

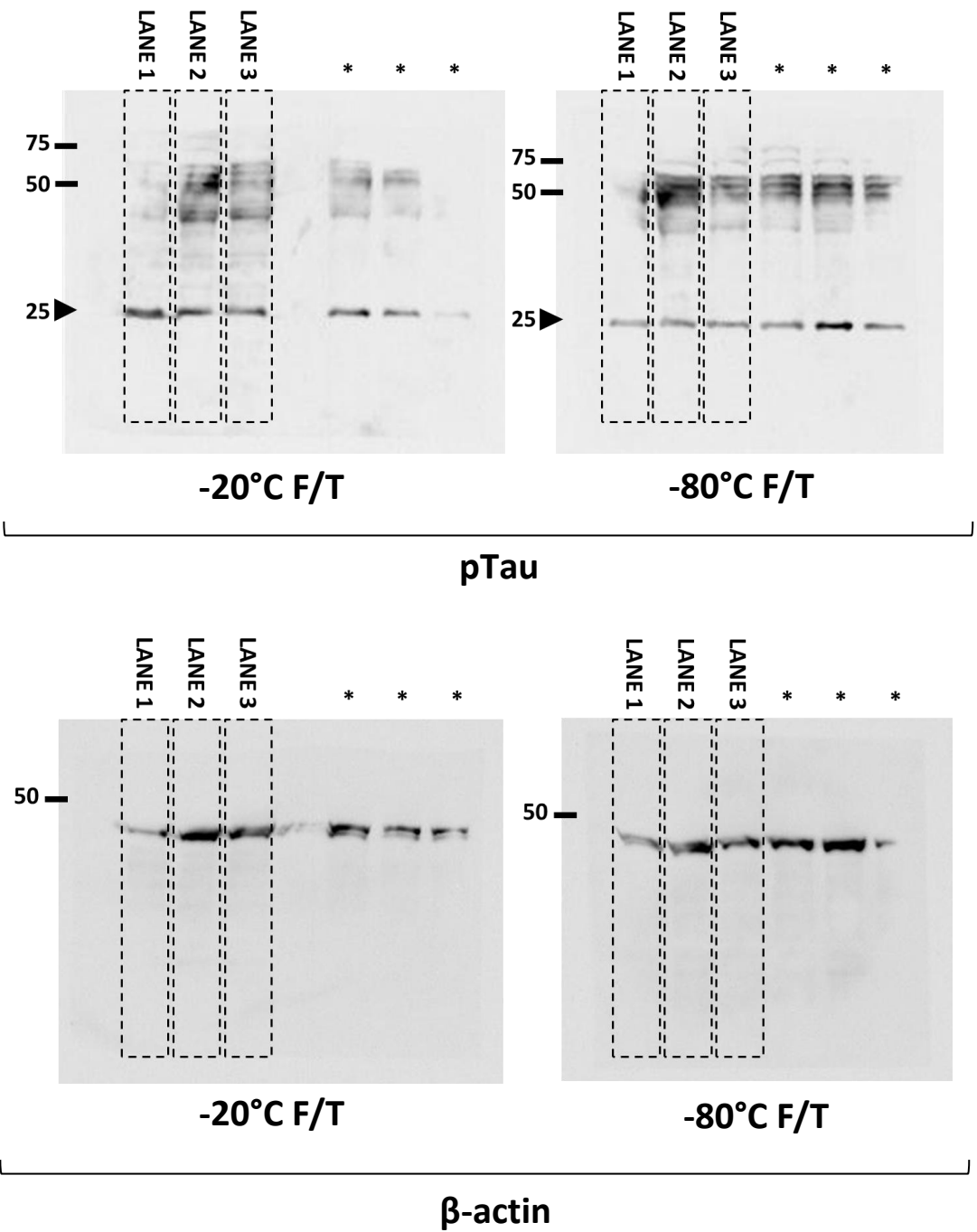
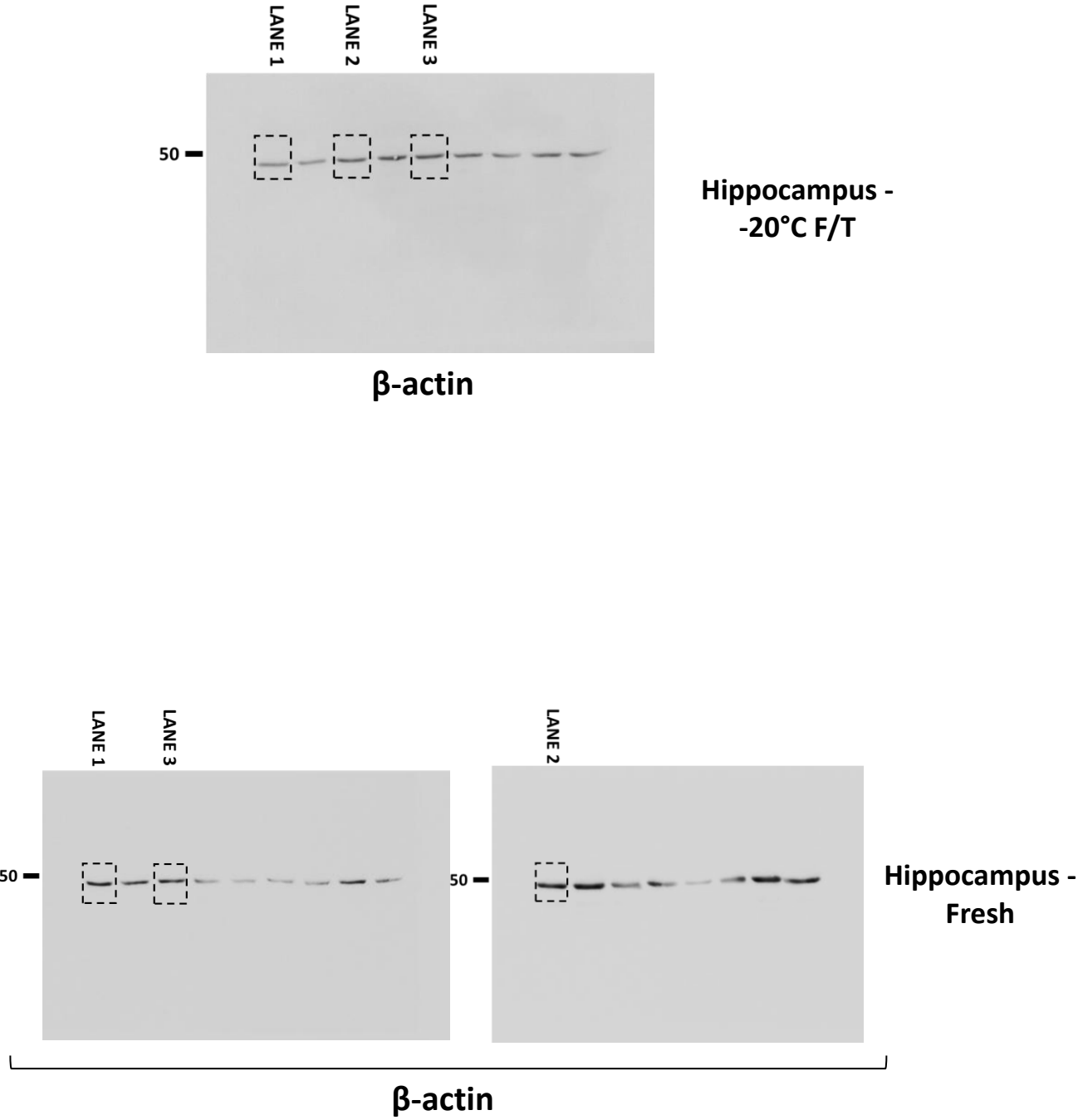


Figure S6. Raw data of **Fig.1 – Panel F** western blotting of fresh and freeze/thawed extracts from rat hippocampus and frontal cortex (lanes used in the main figure are indicated by dotted frames).



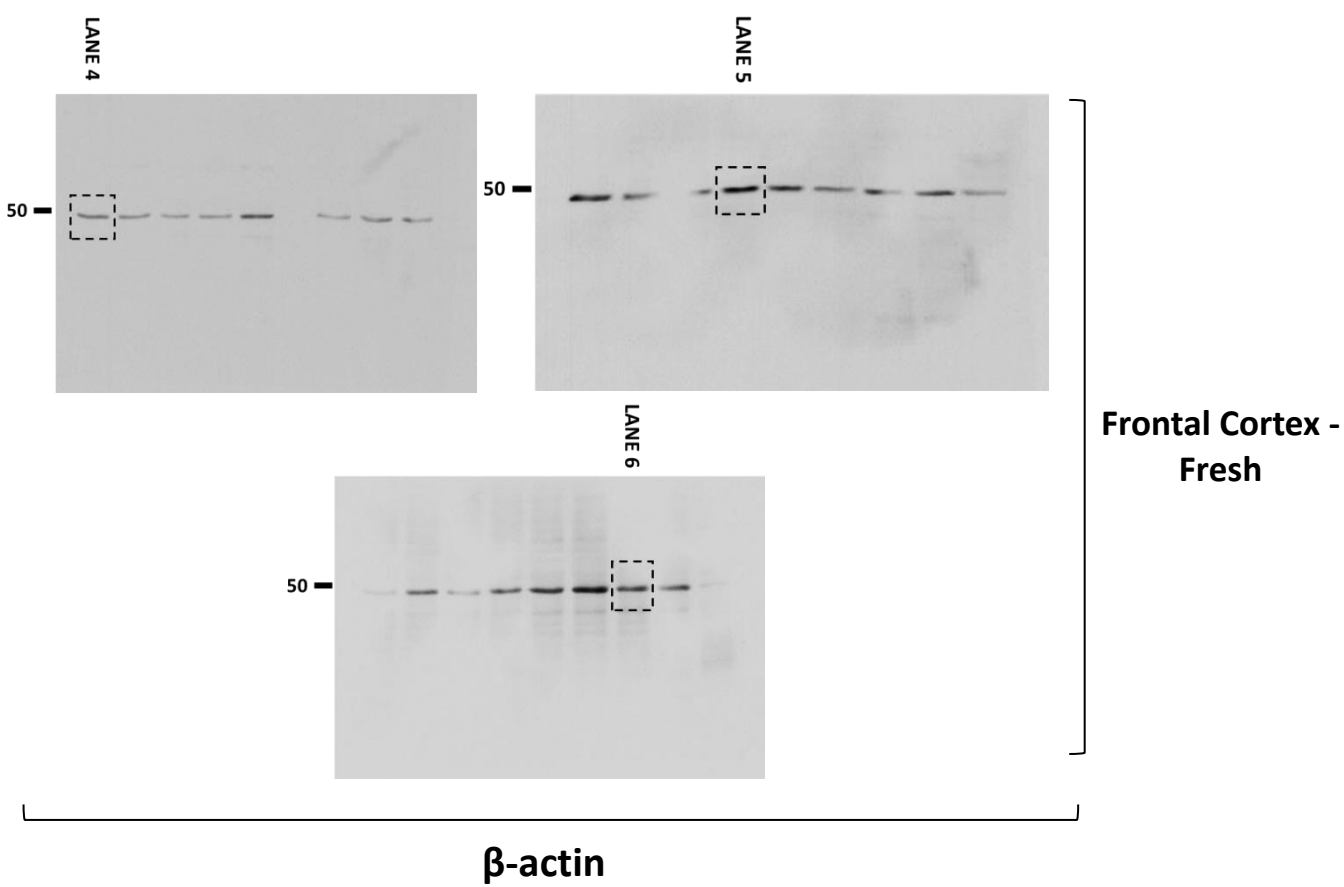
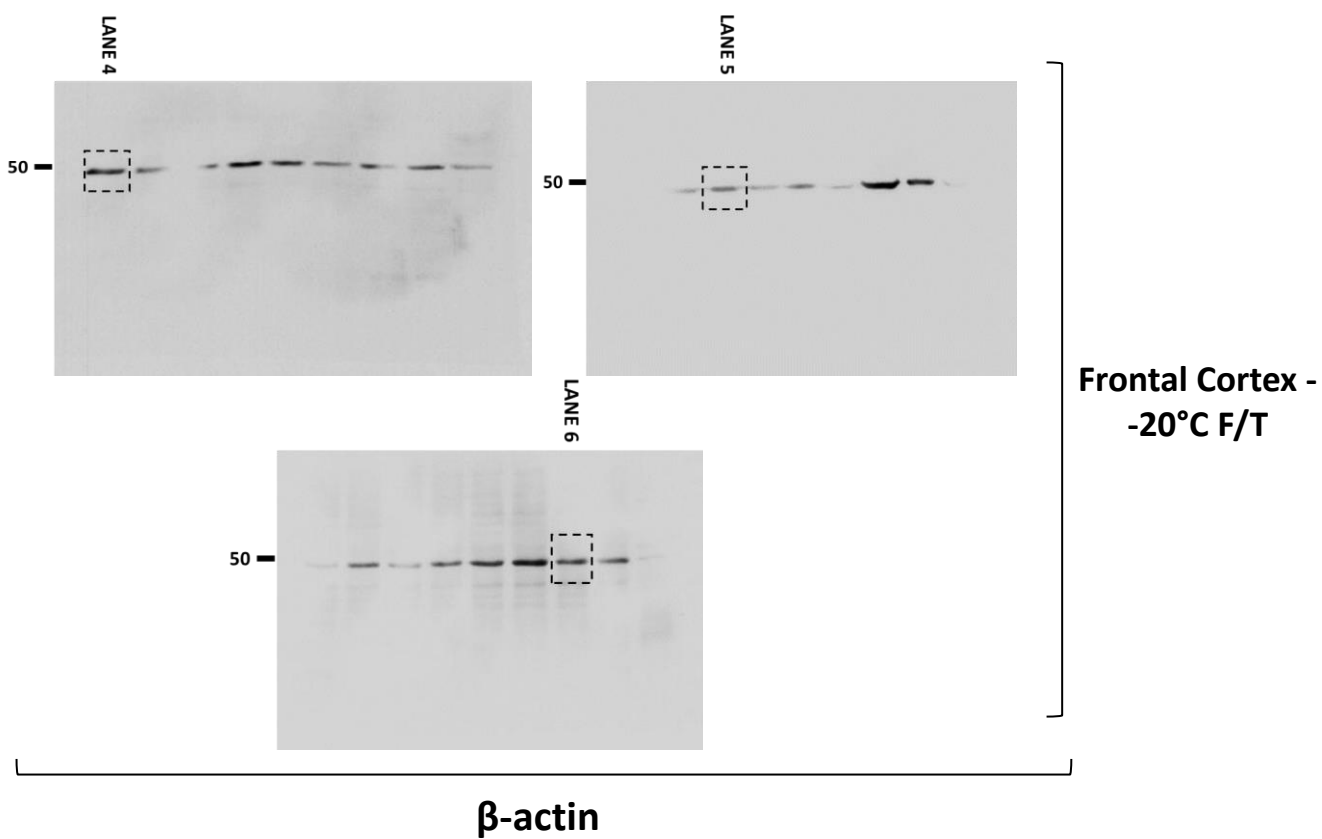


Figure S7. Raw data of **Fig.3 – Panel A** western blotting of fresh and freeze/thawed extracts from 3xTg mice frontal cortex (lanes used in the main figure are indicated by dotted frames).

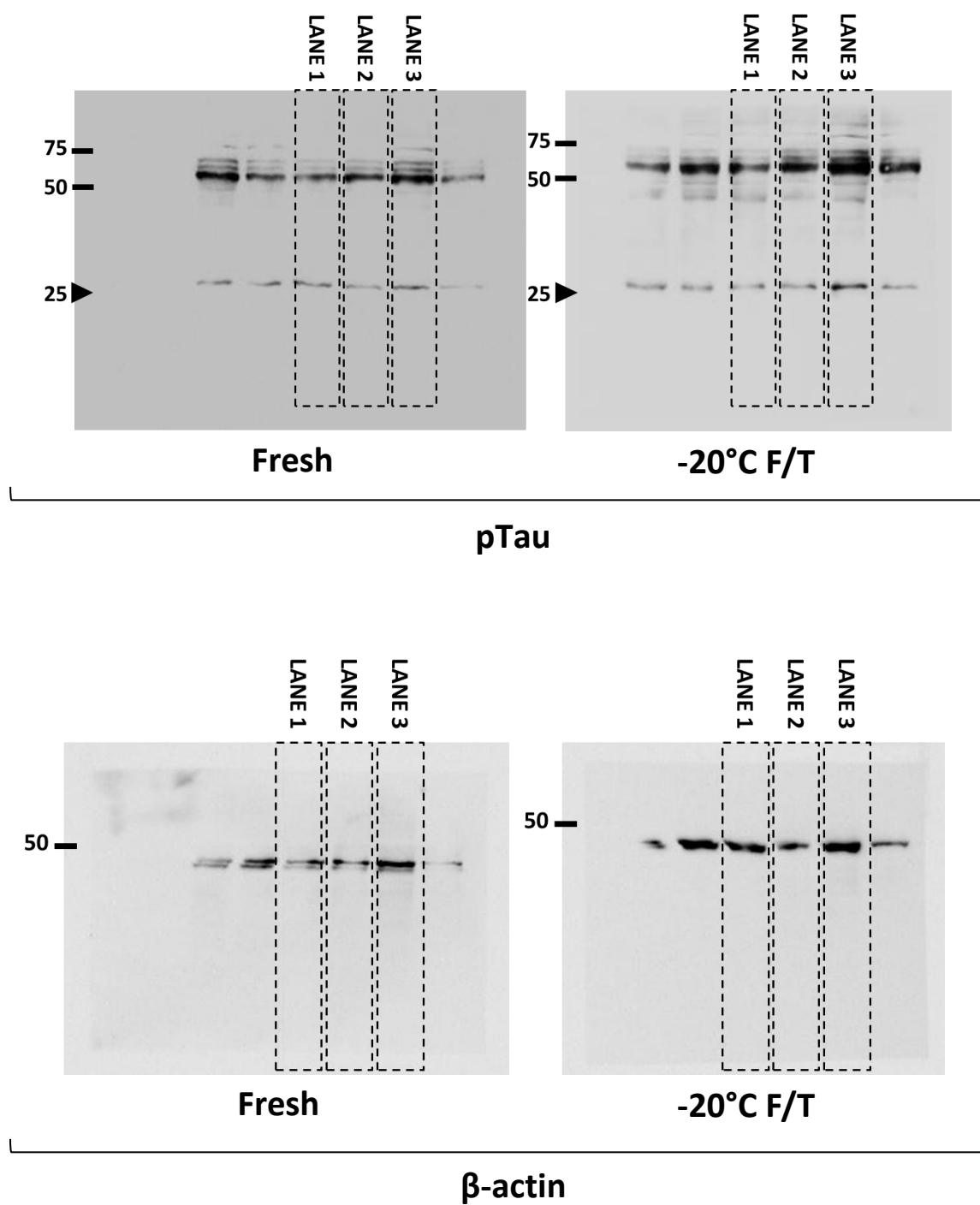


Figure S8. Raw data of **Fig.3 – Panel C** western blotting of fresh and freeze/thawed extracts from human frontal cortex (lanes used in the main figure are indicated by dotted frames). Asterisks (*) stand for lanes with human extracts frozen at -80°C.

