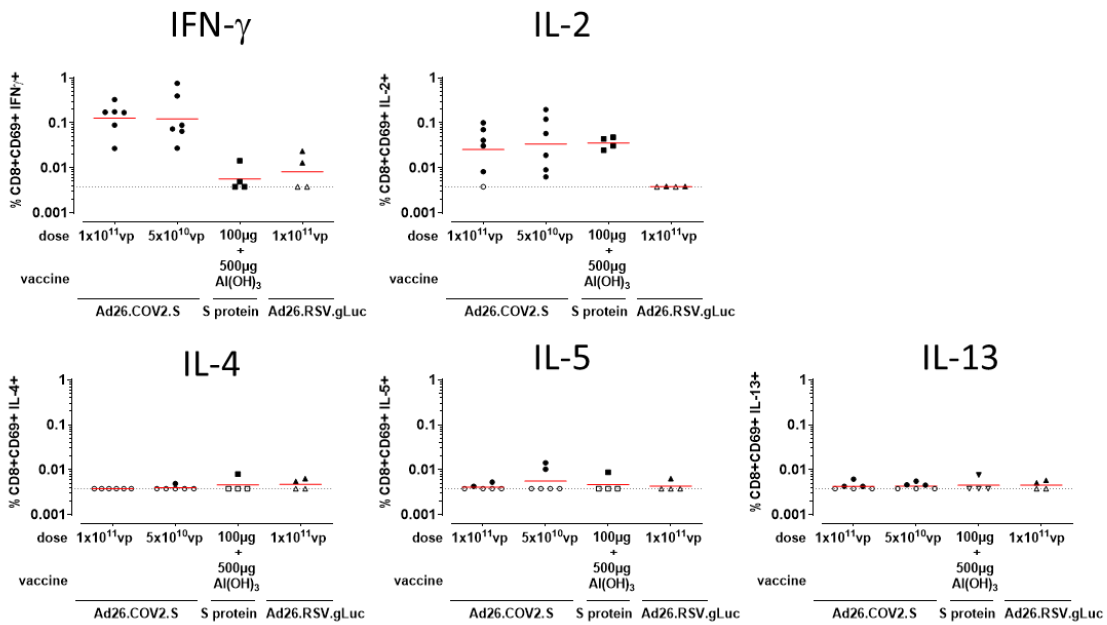


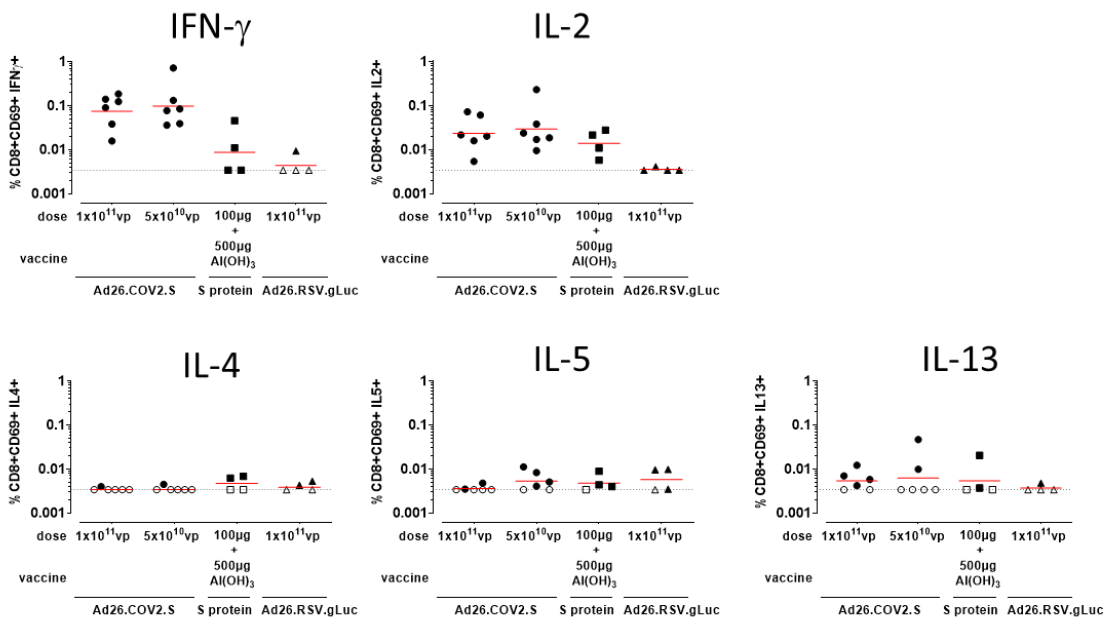
# Supplementary figures

## Supplementary figure 1

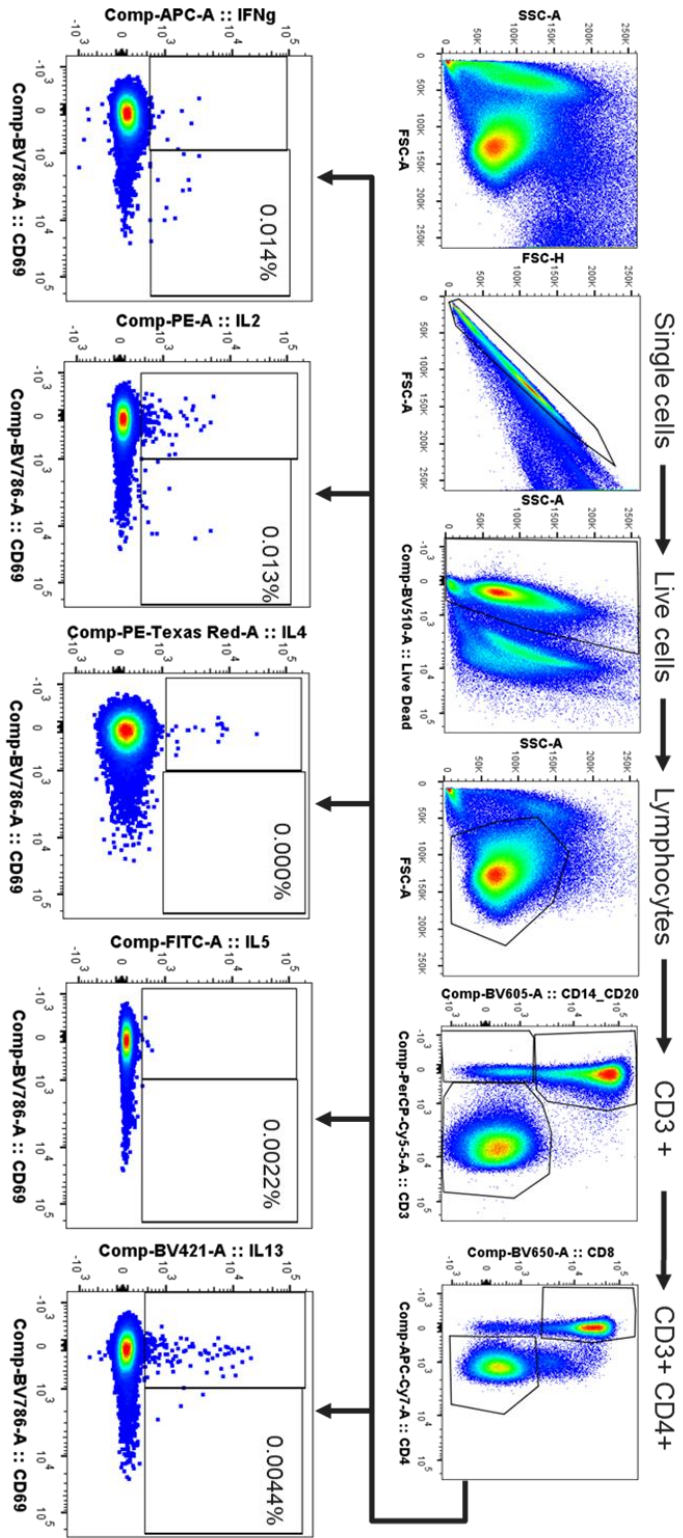
T=4 weeks



T=10 weeks



Supplementary figure 2



## Supplementary figure legends

### **Supplementary figure 1**

Spike (S) protein-specific T cell responses as measured by intracellular cytokine staining at indicated timepoints. Frequency of CD8+CD69+ T cell expressing cytokines. Gating strategy is provided in supplemental figure 2. The geometric mean response per group is indicated with a horizontal line. The dotted line indicates the technical threshold. Open symbols denote samples at technical threshold.

### **Supplementary figure 2**

Intracellular cytokine staining gating strategy to identify cytokine-expressing spike protein-specific CD4+-and CD8+ T cells. Frequencies denote frequency of parent gate.