

A Quadratic Model Captures the Human V1 Response to Variations in Chromatic Direction and Contrast

Michael A. Barnett¹, Geoffrey K. Aguirre², David H. Brainard¹

¹Department of Psychology, University of Pennsylvania

²Department of Neurology, University of Pennsylvania

Abstract

An important goal for vision science is to develop quantitative models for the representation of visual signals at post-receptoral sites. To this end, we develop the quadratic color model (QCM) and examine its ability to account for the BOLD fMRI response in human V1 to spatially-uniform temporal chromatic modulations, systematically varying in their chromatic directions and contrasts. We find that the QCM explains the same, cross-validated variance as a conventional GLM, with far fewer free parameters. The QCM generalizes to allow prediction of V1 responses to a large range of modulations. We replicated the results for each subject and find good agreement across both replications and subjects. We find that within the LM cone contrast plane, V1 is most sensitive to L-M contrast modulations and least sensitive to L+M contrast modulations. Within V1, we observe little to no change in chromatic sensitivity as a function of eccentricity.

Introduction

The initial stage of human color vision is well characterized. The encoding of light by the three classes of cone photoreceptors (L, M and S) is described quantitatively by a set of spectral sensitivity functions, one for each class. Knowledge of the spectral sensitivities allows for the computation of cone excitations from the spectral radiance of the light entering the eye (Brainard & Stockman, 2010). This quantitative characterization supports the analysis of the information available to subsequent processing stages (Geisler, 1989; Cottaris, Jiang, Ding, Wandell, & Brainard, 2019), supports the precise specification of visual stimuli (Brainard, 1996; Brainard, Pelli, & Robson, 2002), and enables color reproduction technologies (Wandell & Silverstein, 2003; Hunt, 2004). An important goal for vision science is to develop similarly quantitative models for the representation of visual signals at post-receptoral sites.

The second stage of color vision combines the signals from the cones to create three post-receptoral mechanisms. Psychophysical evidence supports the existence of two cone-opponent mechanisms, which represent differences between cone signals (S-(L+M) and L-M), and a luminance mechanism, which represents an additive combination (L+M) (Krauskopf, Williams, & Heeley, 1982; Stockman & Brainard, 2010). Physiological evidence shows that this recombination begins in the retina with correlates observed in the responses of retinal ganglion cells and subsequently in the neurons of the lateral geniculate nucleus (DeValois, Abramov, & Jacobs, 1966; Derrington, Krauskopf, & Lennie, 1984; Lennie & Movshon, 2005). While the outlines of this second stage seem well established, the precise links between retinal physiology and visual perception remain qualitative and subject to debate (Stockman & Brainard, 2010; Shevell & Martin, 2017).

Studies focused on developing quantitative parametric models of the chromatic response properties of neurons in primary visual cortex of primates (area V1) have not yet converged on a widely-accepted model (Johnson, Hawken, & Shapley, 2004; Solomon & Lennie, 2005; Tailby, Solomon, Dhruv, & Lennie, 2008; Horwitz & Hass, 2012; Weller & Horwitz, 2018). In part, this is due to the considerable heterogeneity of chromatic response properties found across individual cortical neurons (Gegenfurtner, 2001; Lennie & Movshon, 2005; Solomon & Lennie, 2007; Shapley & Hawken, 2011; Horwitz, 2020). In addition, variation in stimulus sets across studies limits the ability to compare and integrate results.

The chromatic response of V1 has also been studied using blood oxygen level dependent (BOLD) functional magnetic resonance imaging (fMRI) (Wandell, Dumoulin, & Brewer, 2006). This includes studies that characterize the relative responsiveness of V1 (and other visual areas) to various chromatic and achromatic stimuli (Engel, Zhang, & Wandell, 1997; Hadjikhani, Liu, Dale, Cavanagh, & Tootell, 1998; Beauchamp, Haxby, Jennings, & DeYoe, 1999; Bartels & Zeki, 2000; Mullen, Dumoulin, McMahon, de Zubicaray, & Hess, 2007; Goddard, Mannion, McDonald, Solomon, & Clifford, 2011; Lafer-Sousa, Conway, & Kanwisher, 2016) and how this depends on the spatial and temporal properties of the stimulus (Liu & Wandell, 2005; D'Souza, Auer, Frahm, Strasburger, & Lee, 2016; Mullen, Thompson, & Hess, 2010).

Few studies, however, have pursued a quantitative model of the V1 BOLD response to arbitrary chromatic stimulus modulations. Development of such a model is important, since it would enable generalizations of what is known from laboratory measurements to natural viewing environments, where stimuli rarely isolate single mechanisms. Further, the parameters of such a model provide a succinct summary of processing that could be used to understand the flow of chromatic information through cortex. Notably, Engel, Zhang, and Wandell (1997) made progress towards this goal in their pioneering study, which systemically varied the chromatic content and temporal frequency of stimuli and observed the effect on the V1 BOLD fMRI signal and used this to estimate that V1 was maximally sensitive to L-M stimulus modulations.

In the present study, we focus on the signals that reach V1 from stimulus modulations confined to the L- and M-cone contrast plane (LM contrast plane). Specifically, we measured responses with fMRI to flickering modulations designed to systematically vary combinations of L- and M-cone contrast. Using these data, we developed a model—the quadratic color model (QCM)—that predicts the V1 BOLD fMRI response for any arbitrary stimulus in the LM contrast plane, using a small set of parameters. We validate the QCM through comparison to a less constrained general linear model (GLM). Importantly, the parameters of the QCM are biologically meaningful, and describe the sensitivity of V1 to chromatic modulations. Further, we generate model parameter cortical surface maps across early visual cortex, which allow us to quantify how chromatic sensitivity changes across V1 as a function of visual field eccentricity.

Quadratic Color Model (QCM)

This section provides an overview of the Quadratic Color Model (QCM); a full mathematical description is provided in the Model Appendix. Given a description of the stimulus, the QCM provides a prediction of the BOLD fMRI response within V1. Our stimuli were full field temporal chromatic modulations and can be specified by their contrast (vector length of the stimulus in the LM contrast plane) and chromatic direction (angle of the stimulus measured

counterclockwise with respect to the positive abscissa). From this stimulus specification, the model employs three stages that convert the input to the BOLD fMRI response (Figure 1). First, a quadratic isoresponse contour is defined that allows for the transformation of contrast and direction into what we term the “equivalent contrast”. Second, a single non-linear function transforms the equivalent contrast to a prediction of the population neuronal response underlying the BOLD response. Finally, the neuronal response is converted to a predicted BOLD response by convolution with a hemodynamic response function.

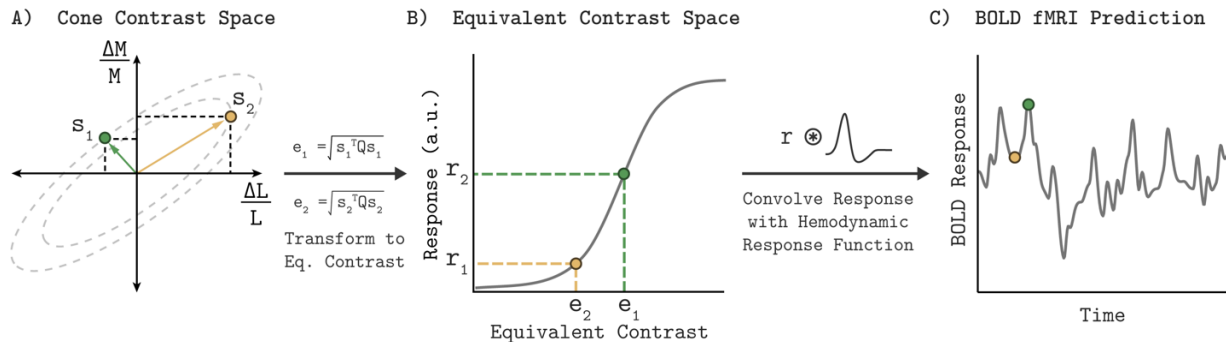


Figure 1: Quadratic Color Model. A) The LM contrast plane representing two example stimuli (s_1 and s_2) as the green and yellow vectors. The vector length and direction specify the contrast and chromatic direction of the positive arm of the symmetric modulation (see Visual Stimuli in Methods). Using the parameters of an elliptical isoresponse contour (panel A, dashed gray ellipses), fit per subject, we can construct a 2x2 matrix Q that allows us to compute the equivalent contrast of any stimulus in the LM contrast plane (panel B; e_1 and e_2 ; See Model Appendix). B) Transformation of equivalent contrast to neuronal response. The equivalent contrasts of the two example stimuli from panel A are plotted against their associated neuronal response. A single Naka-Rushton function describes the relationship between equivalent contrast and the underlying neuronal response. C) To predict the BOLD fMRI response, we convolve the neuronal response output of the Naka-Rushton function with a subject specific hemodynamic response function. Note that the BOLD fMRI response prediction for the green point is greater than the prediction for the yellow point, even though the yellow point has greater cone contrast. This is because of where the stimuli lie relative to the isoresponse contours. The difference in chromatic direction results in the green point producing a greater equivalent contrast, resulting in the larger BOLD response.

Isoresponse Contours and Equivalent Contrast

The first stage of the QCM computes the equivalent contrast of a stimulus from its cone contrast using a subject-specific elliptical isoresponse contour. Equivalent contrast is the effective contrast of a stimulus in V1 once it has been adjusted to account for differential neuronal sensitivity to stimulation in different chromatic directions. An isoresponse contour is the locus of stimuli that evoke the same neuronal response. In the QCM, the locus of stimuli having equal equivalent contrast form ellipses in the LM contrast plane (Figure 1A, dashed gray ellipses). As the amplitude of the neuronal response is increased, the ellipse that defines the set of stimuli producing that response also grows in overall scale. Importantly, the QCM assumes that the aspect ratio and orientation of elliptical isoresponse contours do not change as a function of the response level; only the overall scale of the ellipse changes.

The elliptical isoresponse contours are described by a symmetric quadratic function that defines the major and minor axes of the ellipse. We use this quadratic function to compute the equivalent contrast for each stimulus. The vector length of all stimuli that lie on a single isoresponse contour provide the cone contrasts needed to elicit an equal neuronal response. The minor axis of the elliptical isoresponse contour corresponds to the chromatic direction that

requires the least amount of cone contrast to produce this equal neuronal response, and is therefore the most sensitive chromatic direction. The major axis corresponds to the direction of least sensitivity. As this stage, the model is only concerned with the shape of the elliptical contour, thus we adopt the convention of normalizing the ellipse used to define equivalent contrast so that its major axis has unit length. This allows the length of the minor axis to directly represent the relative sensitivity, which is taken as a ratio of the minor axis (maximal sensitivity) to major axis (minimal sensitivity), referred to as the minor axis ratio. The angle of the major axis in the LM contrast plane (ellipse angle) orients these maximally and minimally sensitive directions.

Response Non-Linearity

Since all of the stimuli that lie on a single isoresponse contour produce the same equivalent contrast, we can represent these points by their common equivalent contrast. The neuronal responses to stimuli across different color directions are a function of this single variable, and therefore we can transform equivalent contrast into predicted neuronal response via a single static non-linear function (Figure 1B). Here we employ the four-parameter Naka-Rushton function (see Model Appendix).

Transformation to BOLD fMRI Signal

To predict the BOLD fMRI signal, we obtain the time-varying neuronal response prediction from the Naka-Rushton function for a stimulus sequence presented in the fMRI experiment. This neuronal response is convolved with a subject-specific hemodynamic response function to produce a prediction of the BOLD fMRI signal (Figure 1C).

QCM Summary

In summary, the QCM takes as input the temporal sequence of stimulus modulations, defined by their chromatic direction and contrast in the LM cone contrast plane, and outputs a prediction of the BOLD fMRI time course. The QCM has 6 free parameters: two that define the shape of the normalized elliptical isoresponse contour and four that define the Naka-Rushton equivalent contrast response function.

Results

To evaluate the QCM, three subjects underwent fMRI scanning while viewing spatially uniform chromatic temporal modulations, presented using a block design. Each 12 second block consisted of a 12 Hz bipolar temporal modulation in one of 8 chromatic directions and at one of 5 log-spaced contrast levels. We split the chromatic directions into two sessions and subjects viewed each of the 20 combinations of chromatic direction (4 directions) and contrast (5 levels) once per run in a pseudorandomized order (see Materials and Methods, Figure 11 & 12). For each subject, a measurement set consisted of 20 runs conducted across the two scanning sessions. We collected two complete measurement sets (referred to as Measurement Set 1 and 2) for each subject, and fit the model to each set separately to test for the replicability of our findings. We first modeled the data using a conventional GLM that accounts for the response to each of the 40 stimulus modulations independently. The fit of this relatively unconstrained model was used as a benchmark to evaluate the performance of QCM. Results were similar for

all three subjects. In the main text, we illustrate our findings with the data from one subject (Subject 2); results from the other two subjects may be found in the supplementary materials.

Characterizing Cortical Responses with a Conventional GLM

Contrast-Response Functions

To examine the basic chromatic response properties of V1, we grouped the GLM beta weights by their corresponding chromatic direction and plotted them as a function of contrast, indicated as the filled circles in each of the eight panels of Figure 2 (data from Subject 2). For each chromatic direction, the V1 BOLD response generally increased with contrast, as expected. This result is consistent across the two independent measurement sets for Subject 2, as can be seen by comparing the green and purple points in Figure 2. Further, the increasing response with stimulus contrast was also observed in both measurement sets for the other two subjects (Supplemental Figures S1 and S2).

The rate at which V1 BOLD responses increase with contrast varied with chromatic direction. This can be seen in Figure 2 by noting that the maximum stimulus contrast differed considerably across chromatic directions, while the maximum response remained similar. For example, a modulation in the 45° direction required $\sim 60\%$ stimulus contrast to elicit a response of 0.6 while stimuli modulated in the -45° direction required only $\sim 12\%$ stimulus contrast to produce a similar response.

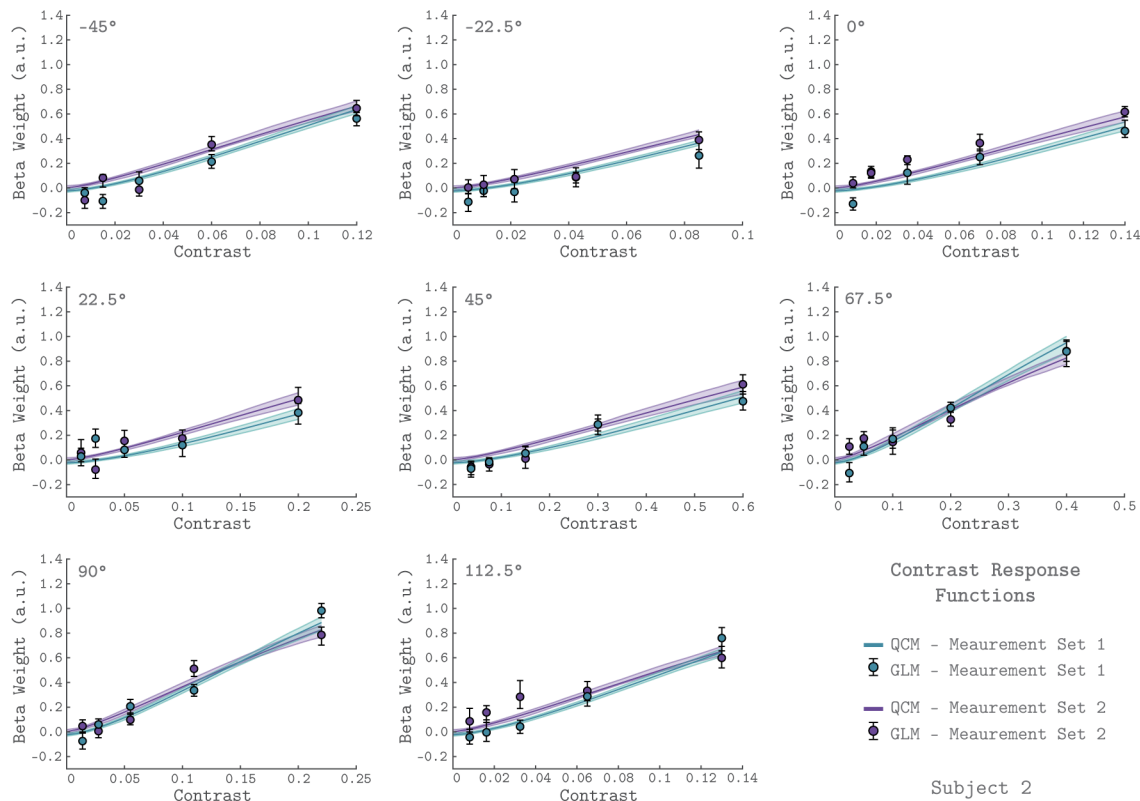
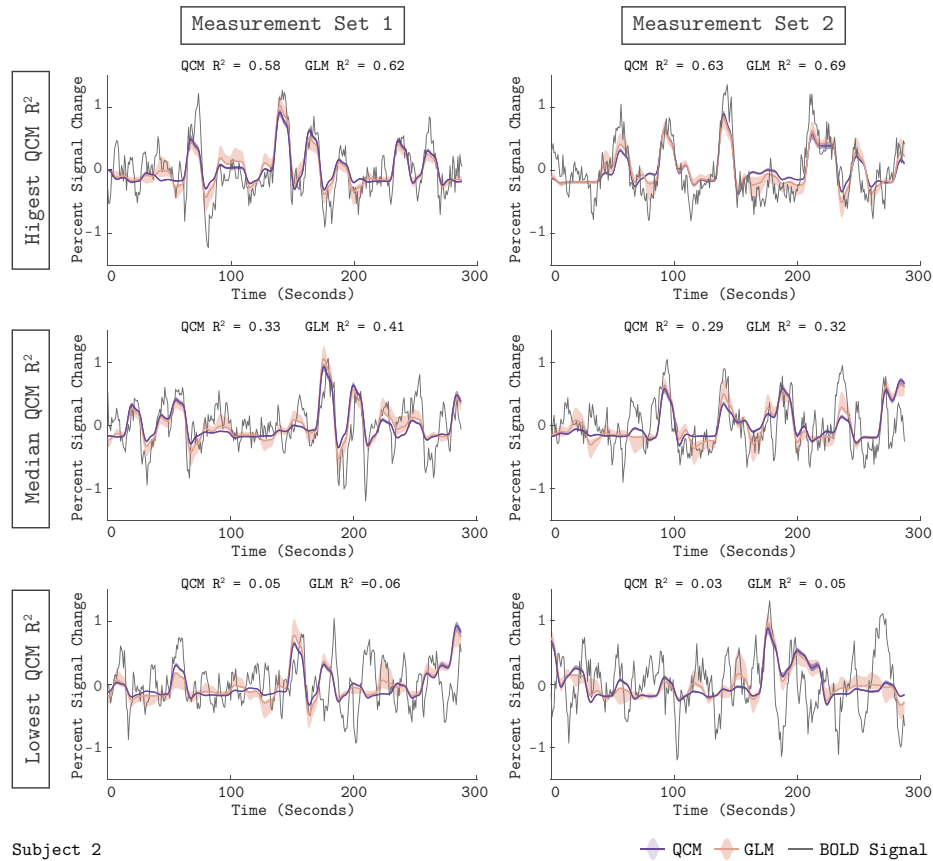


Figure 2: V1 contrast response functions for the eight measured chromatic directions from Subject 2. Each panel plots the contrast response function of V1, aggregated over 0° to 20° eccentricity, for a single chromatic direction. The x-axis is contrast, the y-axis is the BOLD response (taken as the GLM beta weight for each stimulus). The chromatic direction of each stimulus is indicated in the upper left of each panel. The curves represent the QCM prediction of the contrast response function. Error bars indicate 68% confidence intervals obtained using bootstrapping. Measurement Sets 1 and 2 are shown in green and purple. The x-axis range differs across panels as the maximum contrast used varies with color direction. All data shown have had the baseline estimated from the background condition subtracted such that we obtain a 0 beta weight at 0 contrast.

Quality of GLM time course predictions.

We examined how well the GLM fit the measured BOLD response from area V1. Figure 3 shows the fit of the GLM for six example runs from Subject 2. In each panel, the measured BOLD percent signal change is shown as the black line, while the prediction obtained from the GLM is shown as the orange line. The orange shaded region represents the 68% confidence interval of the fit found using bootstrapping. The GLM fit captured meaningful stimulus-driven variation in the BOLD response, with some variation in fit quality across runs. The median R^2 value across runs was 0.41 for Measurement Set 1 and 0.32 for Measurement Set 2. Fits for the other two subjects are provided as Supplemental Figure S3 and S4. Due to the randomized stimulus order within each run, it was not straightforward to determine the degree to which the unmodeled variance was due to stimulus-driven structure not modeled by the GLM (e.g., repetition suppression effects) as opposed to measurement noise. Overall, the quality of the GLM fits supported using the GLM as a benchmark model, as well as using the GLM beta weights as a measure of the V1 response.



Subject 2

Figure 3: Model predictions of the V1 BOLD time course. The measured BOLD time course (thin gray line) is shown along with the model predictions from the QCM (thick purple line) and GLM (thin orange line) for 6 runs from Subject 2. Individual runs consisted of only half the total number of chromatic directions. The left column shows data and predictions from Measurement Set 1 and the right column for Measurement Set 2. The three runs presented for each measurement set were chosen to correspond to the highest, median, and lowest QCM R² values within the respective measurement set; the ranking of the GLM R² values across runs was similar. The R² values for the QCM and the GLM are displayed at the top of each panel. The shaded error regions represent the 68% confidence intervals for the GLM obtained using bootstrapping.

Is the QCM a good model of the BOLD response?

Characterizing Cortical Responses with the Quadratic Color Model

The QCM is a parametric special case of the GLM that predicts the BOLD time course using a small number of parameters, and allows for response predictions to modulations in any chromatic direction and contrast in the LM plane. Figure 2 shows the QCM V1 contrast response functions for Subject 2 (the solid lines). The green and purple lines represent fits to Measurement Set 1 and 2, respectively. The shaded region around both lines represents the 68% confidence intervals for the fits obtained using bootstrapping. The QCM contrast response functions agree well with the beta weights obtained from the GLM. The QCM contrast response functions increase monotonically with contrast in all chromatic directions, potentially smoothing measurement variability in the GLM beta weights. There was excellent agreement between the fits to both measurement sets for Subject 2. Similar agreement between the QCM

and the GLM and between measurement sets was found for the other two subjects (Supplemental Figures S1 and S2).

We assessed the quality of the QCM fit to the V1 BOLD time course. The purple line in Figure 3 shows the QCM fit to the BOLD time course with the shaded region representing the 68% confidence interval obtained using bootstrapping. The QCM fit of the time course was of similar quality to the GLM fit. Importantly, the QCM fit was based on only 6 free parameters, compared to the 41 free parameters of the GLM. Similar quality of fits for QCM can be seen for the other two subjects in Supplemental Figures S3 and S4.

Comparison of GLM and QCM

We used a leave-runs-out cross-validation procedure to compare the GLM and QCM models (See Methods section for details). This cross-validation compares the ability of the models to predict data not used to fit the parameters, accounting for the possibility that more flexible models (such as the GLM) may overfit the data. Figure 4 shows the results of the cross-validation comparison between QCM and GLM for all subjects. Both models track meaningful variation in the signal, although less so for the data from Subject 3 in Measurement Set 2. Importantly, we see that the QCM cross-validated R^2 is indistinguishable from the GLM cross-validated R^2 .

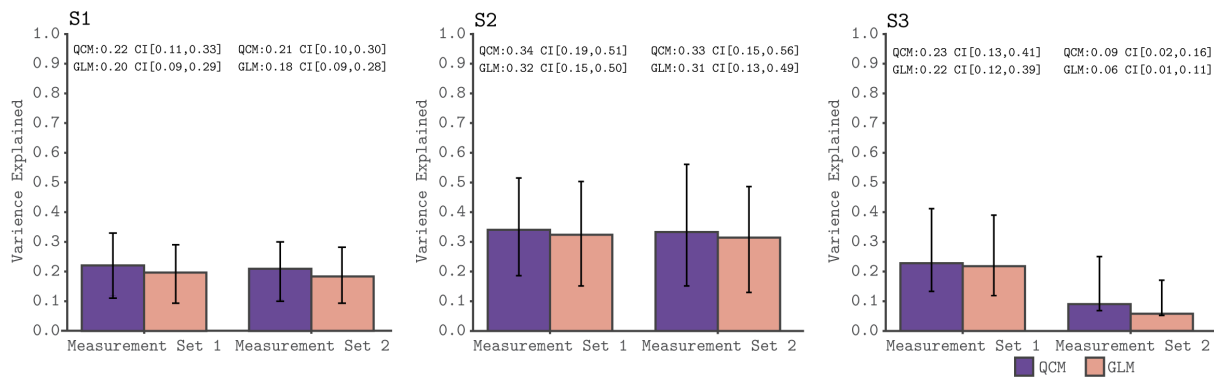


Figure 4: Cross-validated model comparison for the QCM and the GLM, from the V1 ROI and for all three subjects. In each panel, the mean leave-one-out cross-validated R^2 for the QCM (purple bars) and the GLM (orange bars) are plotted along with the 68% confidence intervals obtained from the 10 cross-validation iterations. These values are displayed at the top of each panel. Within each panel, the left group is for Measurement Set 1 and the the right group is for Measurement Set 2.

QCM Generalization

We also employed a leave-session-out cross-validation procedure to assess the generalizability of the QCM (See Materials and Methods for details). Given that Sessions 1 and 2 do not share any common chromatic directions, we were able to evaluate how effectively the QCM generalizes to chromatic directions not used to derive the model parameters. The green contrast response functions shown in Figure 5 result from fitting the QCM to either Session 1 or Session 2, and predicting the responses from the held-out session. The generalization from Session 1 to Session 2 (right-hand subplots) is excellent for this subject. The generalization from Session 2 to Session 1 is also good, albeit with a large confidence interval for the 45° direction. For other subjects and measurement sets, the QCM generalizes reasonably well (Supplemental Figures S5-S7). Overall, generalizations from Session 1 to Session 2 perform better than those from Session 2 to Session 1. This finding may reflect the particular set of chromatic directions presented in each session: only Session 1 includes a chromatic direction close to the major axis

of the ellipse, which better constrains the QCM fit. Therefore, the QCM is capable of generalizing well to unmeasured chromatic directions, with the requirement that the stimuli include chromatic directions and contrasts that adequately constrain the model parameters.

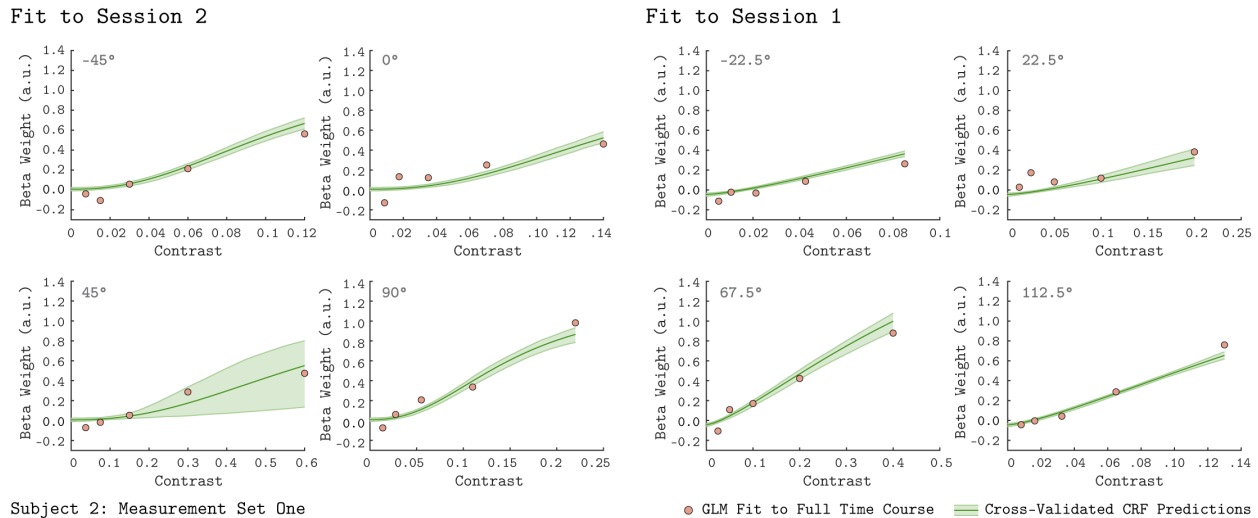


Figure 5: Leave-Sessions-Out Cross Validation. The contrast response functions in each panel (green lines) are the result of a leave-sessions-out cross-validation to test the generalizability of the QCM. The QCM was fit to data from four out of the eight tested chromatic directions, either from Session 1 or Session 2. The fits were used to predict the CRFs for the held out four directions. The orange points in each panel are the GLM fits to the full data set. The data shown here are for Subject 2, Measurement Set 1. The shaded green error regions represent the 68% confidence intervals for the QCM prediction obtained using bootstrapping. See Supplemental Figures S5-S7 for cross-validation plots from other subjects and measurement sets.

QCM Characterization of V1 BOLD Response

Conceptually, the parameters of the QCM characterize two key model components. The first component defines the contrast-independent shape of elliptical isoresponse contour. This describes the relative sensitivity of V1 to modulations in all chromatic directions in the LM contrast plane. The second component defines the response nonlinearity, which is independent of chromatic direction. It operates on equivalent contrast to produce the underlying neural response.

Elliptical Isoresponse Contours

The isoresponse contour is described by two parameters: the direction of least sensitivity (ellipse angle; counterclockwise to the positive abscissa) and the ratio of vector lengths between the most and least sensitive directions (minor axis ratio; see Quadratic Color Model Section and Model Appendix). Within the QCM, the angle and minor axis ratio provide a complete description of chromatic sensitivity that is contrast independent.

Figure 6 shows the QCM isoresponse contours for all 3 subjects and both measurement sets. We found that for all subjects and measurement sets, the angle of the isoresponse contours was oriented at approximately 45°. An ellipse angle of 45° indicates that V1 was least sensitive to stimuli modulated in the L+M direction, and most sensitive to stimuli modulated in the L-M direction. The relative sensitivity difference in V1 between the least and most sensitive modulation directions is captured by the minor axis ratio. Across all subjects and measurement sets, the minor axis ratio parameters ranged between 0.15 and 0.25. Thus, for the spatial and temporal properties of our modulations, V1 was roughly 5 times more sensitive to modulations

in the L-M direction than the L+M direction. We found good agreement between the isoresponse contours from the independent measurement sets as well as across subjects.

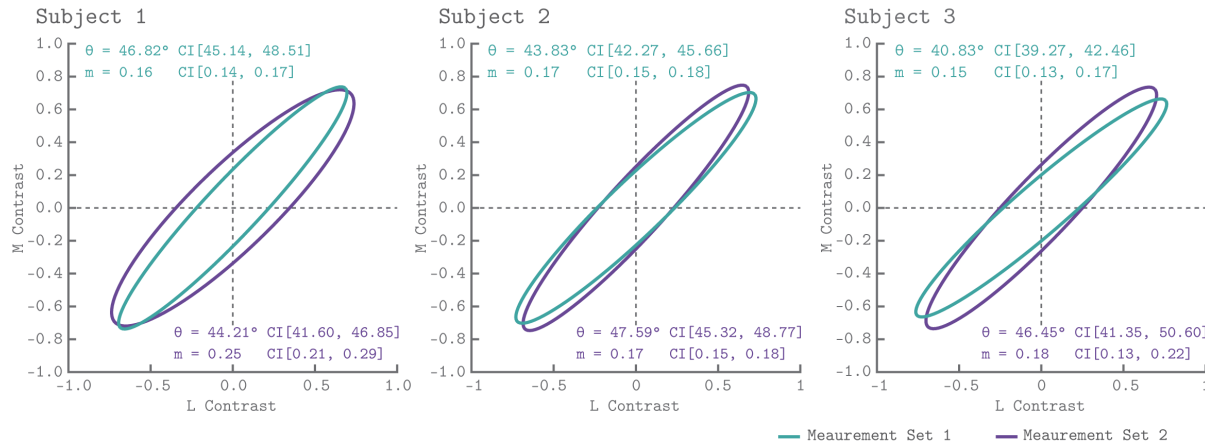


Figure 6: V1 isoresponse contours. The normalized elliptical isoresponse contours from the QCM are plotted, for each subject, in the LM contrast plane. The green ellipses show the QCM fits to Measurement Set 1 and the purple ellipses show fits to measurement 2. The angles and minor axis ratios along with their corresponding 68% confidence intervals obtained using bootstrapping are provided in the upper left (Measurement Set 1) and lower right (Measurement Set 2) of each panel.

Equivalent Contrast Nonlinearity.

Figure 7 shows the V1 equivalent contrast nonlinearity of the QCM for Subject 2 for both measurement sets. This non-linearity describes how the underlying neuronal response increases with increasing equivalent contrast. We used the isoresponse contour of the QCM to convert the chromatic direction and cone contrast of each stimuli to equivalent contrast. This allowed us to replot each beta weight derived from the GLM (Figure 2) on an equivalent contrast axis (Figure 7; closed circles). For all subjects, the single nonlinearity accurately captured the dependence of the GLM beta weight on equivalent contrast, with no apparent bias across chromatic directions. The agreement between the GLM beta weight points and QCM fits demonstrated that separating the effects of chromatic direction and contrast in the QCM is reasonable. Supplemental Figure S8 provides the same plots for Subjects 1 and 3. Note that our stimuli did not drive the response into the saturated regime.

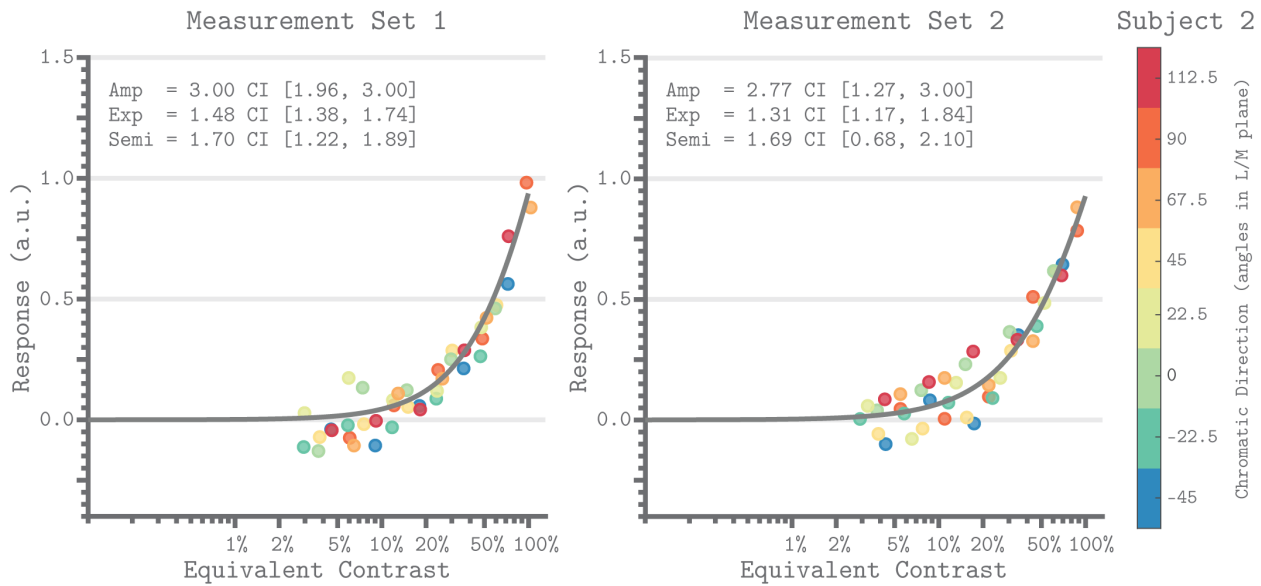


Figure 7: Equivalent contrast non-linearities of the QCM for V1 from Subject 2. The x-axis of each panel marks the equivalent contrast and the y-axis is the neuronal response. The gray curve in each panel is the Naka-Rushton function obtained using the QCM fit. These curves show the relationship between equivalent contrast and response. The parameters of the Naka-Rushton function are reported in upper left of each panel along with the 68% confidence intervals obtained using bootstrapping. The points in each panel are the GLM beta weights mapped via the QCM isoresponse contours of Subject 2 onto the equivalent contrast axis (see Model Appendix). The color of each point denotes the chromatic direction of the stimuli, as shown in the color bar. The left panel is for Measurement Set 1 and the right panel is for Measurement Set 2. Note that our maximum contrast stimuli do not produce a saturated response.

Dependence of Chromatic Sensitivity on Eccentricity

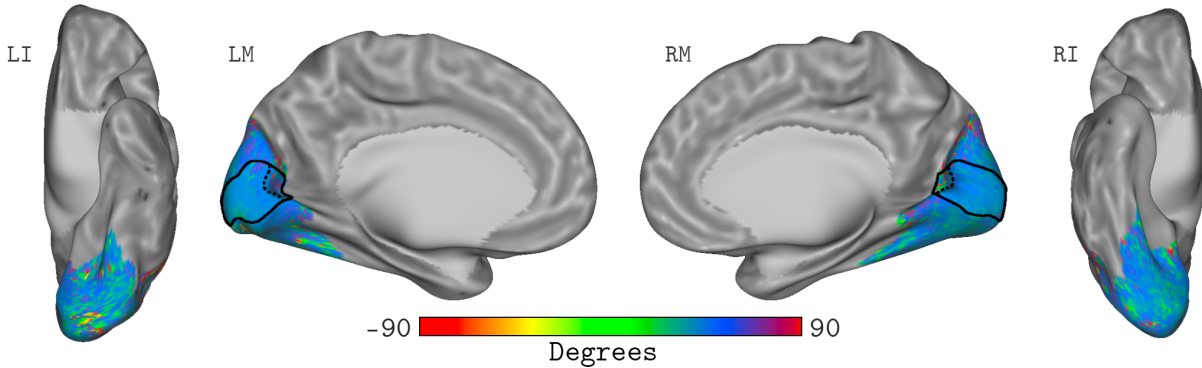
Isoresponse Contour Parameter Maps.

There is considerable interest in how sensitivity to modulations in the LM contrast plane varies with eccentricity. Understanding such variation is important both for describing visual performance and for drawing inferences regarding the neural circuitry that mediates color vision. Since the QCM separates chromatic sensitivity from the dependence of the response on contrast, examining how the shape of the QCM isoresponse contour varies with eccentricity addresses this question in a contrast-independent manner. We fit the QCM to the BOLD time course of each vertex in the template map of visual areas developed by Benson et al. (2014). This allowed us to visualize how the parameters that describe the isoresponse contour varied with eccentricity within V1.

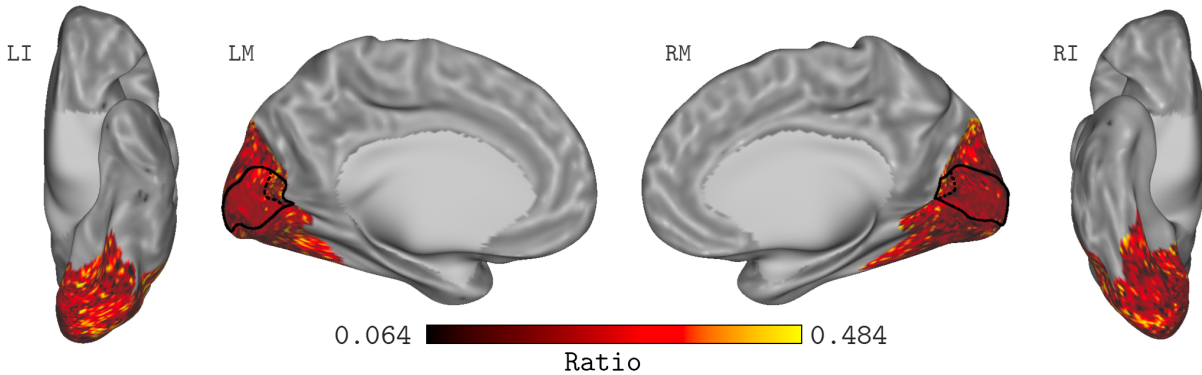
Figure 8 shows parameter maps for the ellipse angle, the minor axis ratio, and the variance explained by the QCM displayed on the cortical surface. Here the data were averaged across all subjects and measurement sets. In all panels, the full extent of V1 is denoted by the black outline on the cortical surface, while the 20° eccentricity ROI used in the V1 analyses above is shown by the black dashed line. Apparent in the maps is that neither parameter varied systematically within V1, a feature of the data that is consistent across measurement sets and subjects. Outside of V1, the R^2 values were markedly lower, and there was higher variability in the QCM parameters. As our spatially uniform stimuli were not highly effective at eliciting

reliable responses outside of V1, we did not further analyze the response properties of extrastriate cortex.

Ellipse Angle



Minor Axis Ratio



Variance Explained

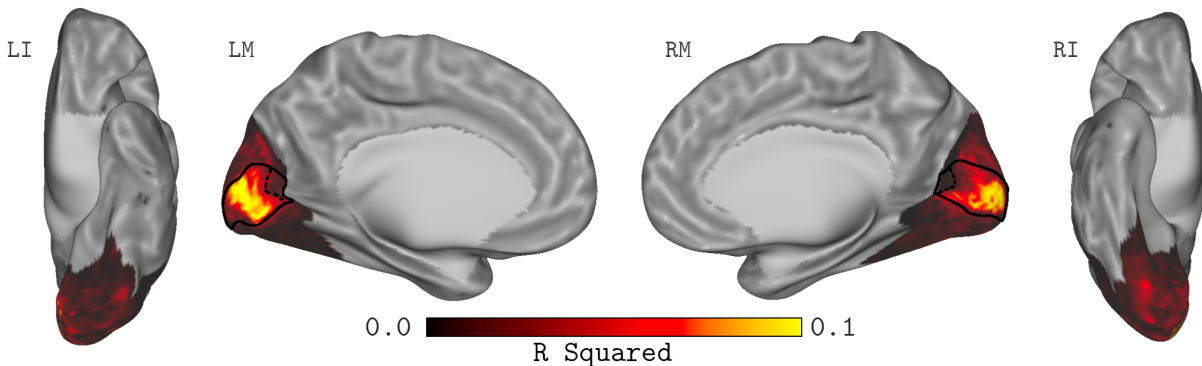


Figure 8: QCM Average Parameter Maps. The QCM parameters, fit at all vertices within the visual cortex mask, averaged across all subjects and measurement sets. The top, middle, and bottom rows show maps of the average ellipse angle, minor axis ratio, and variance explained, respectively. The scale of the corresponding color map is presented below each row. The nomenclature in upper left of each surface view indicates the hemisphere (L: left or R: right) and the view (I: inferior, L: lateral, or M: medial). The medial views show the full extent of the V1 ROI on the cortical surface (denoted by the solid black outline). The 20° eccentricity boundary used to define the V1 ROI used for all analyses is shown by the black dashed line.

No Change in V1 Chromatic Sensitivity with Eccentricity.

Figure 9 plots the V1 QCM parameters as a function of eccentricity, for Subject 2. The left panel shows the minor axis ratio and the right panel shows the ellipse angle. In both plots, individual points represent a single vertex, with the x-axis giving the visual field eccentricity of that vertex obtained from the Benson et al. (2014) template, and the y-axis giving the parameter value. The transparency of each point indicates the R^2 value of the QCM fit for the corresponding vertex. The maximum R^2 value across vertices for Measurement Sets 1 and 2 were 0.25 and 0.24, respectively. The lines in each panel reflect a robust regression fit to the points. We found that there is little change in either parameter with eccentricity. For Subject 2, the best fit lines had slightly negative slopes for the minor axis ratio and slightly positive slopes for the ellipse angle, with good agreement across measurement sets. The overall change in parameter values from 0° to 20° , however, was small compared to the vertical spread of values at each eccentricity. We compared the change in parameter values from 0° to 20° to the variability across measurement sets for all three subjects (Table 1 for ellipse angle, and Table 2 for minor axis ratio). Across subjects, the majority of sessions showed differences in parameter values from 0° to 20° that exceeded the set-to-set difference in the parameter values obtained for all of V1. In the discussion, we return to consider factors that might produce the slight changes in QCM parameter values that we observed.

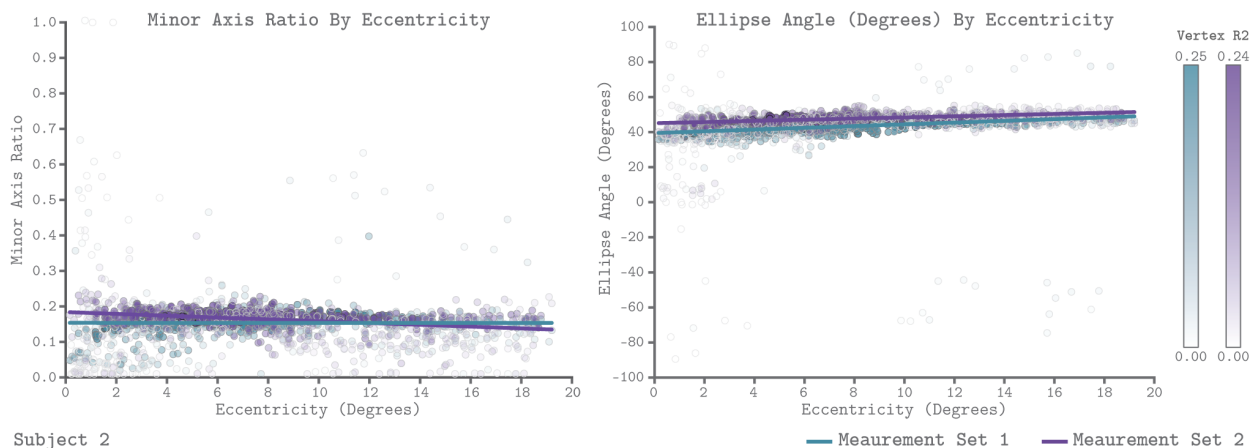


Figure 9: QCM parameters as a function of eccentricity for Subject 2. The left and right panels show scatter plots of the minor axis ratio and ellipse angle plotted against their visual field eccentricity, respectively. Each point in the scatter plot shows a parameter value and corresponding eccentricity from an individual vertex. Green indicates Measurement Set 1 and purple indicates Measurement Set 2. The lines in each panel are robust regression obtained for each measurement set separately. The transparency of each point provides the R^2 value of the QCM at that vertex. The color bars provide the R^2 scale for each measurement set.

Minor Axis Ratio:

Subject	Set	Slope	Offset	$\Delta 0^\circ$ to 20°	Δ Set to Set
S1	1	-1.19e-3	0.163	0.0238	0.09
S1	2	-4.17e-4	0.24	0.0084	
S2	1	-7.54e-6	0.154	0.0002	0.00
S2	2	-2.51e-3	0.183	0.0504	
S3	1	-3.27e-3	0.114	0.0654	0.03
S3	2	-3.9e-4	0.158	0.0078	

Table 1: Robust regression line parameters summarizing the change in minor axis ratio with eccentricity for all subjects. These parameters are the same as seen for Subject 2 in Figure 10. The subject and set columns indicate the subject and measurement set of the robust regression fit. The slope and offset column show the parameters of the regression line. The $\Delta 0^\circ$ to 20° column is the magnitude of the change in minor axis ratio between 0° and 20° eccentricity. The Δ Set to Set column shows the absolute difference in the minor axis ratio fit to the V1 median time course between Measurement Set 1 and 2 (individual measurement set parameters are reported in Figure 7).

Ellipse Angle:

Subject	Set	Slope	Offset	$\Delta 0^\circ$ to 20°	Δ Set to Set
S1	1	0.039	46.2	0.78	2.61
S1	2	0.313	41.4	6.26	
S2	1	0.496	39.5	9.92	3.76
S2	2	0.330	45.1	6.60	
S3	1	0.247	39.3	4.94	5.62
S3	2	0.425	43.3	8.50	

Table 2: Robust regression line parameters summarizing the change in ellipse angle with eccentricity for all subjects. Columns are formatted the same as Table 1.

Discussion

Summary

We set out to develop a quantitative model of the visual cortex response to chromatic stimuli in the LM contrast plane. To this end, we developed the quadratic color model (QCM) and examined its ability to fit V1 BOLD fMRI responses to spatially uniform chromatic stimuli. We find that the QCM accounts for the same cross-validated variance as a conventional GLM, with far fewer free parameters (6 as compared to 41). The model generalizes across both chromatic direction and contrast to predict V1 responses to a set of stimuli that were not used to fit the model parameters. The experiment was replicated for each subject using the same stimuli across separate measurement sets. Both the data and the model fits replicate well for each subject and are similar across subjects, giving us confidence in the power of the measurements.

The QCM is a separable model with respect to the effects of chromatic direction and contrast. This allowed us to evaluate the chromatic sensitivity in V1 of our subjects in a manner that is independent of the effects of contrast. We find that V1 is most sensitive to L-M contrast modulations and least sensitive to L+M contrast modulations. This was shown in all subjects

and measurement sets by the isoresponse contours of each subject being oriented at approximately 45° and having a minor axis that is roughly 5 times smaller than the major axis.

We performed vertex-wise fits for the entire template map of visual areas developed by Benson et al. (2014) to generate parameter surface maps. We find that our stimuli were not effective at modulating signals outside of V1. Within V1, we examined how the parameters of the QCM isoresponse contours vary across the surface of V1. We observe little to no change in chromatic sensitivity as a function of eccentricity.

Interpretation of QCM parameters.

The parameterization of QCM readily allows for the interpretation of the chromatic sensitivity of V1. This is due to the model being separable between chromatic direction and contrast. This means that the shape of the isoresponse contour is independent of contrast and that the form of the equivalent contrast-response function is independent of chromatic direction. Thus, we can consider each of these aspects of the response separately.

The ellipse angle and the minor axis ratio describe how sensitivity varies with chromatic direction. The ellipse angle specifies the direction in the LM contrast plane to which a voxel is least sensitive, while the orthogonal direction (minor axis) is the direction of maximal sensitivity. In our data, we find the highest sensitivity in the L-M contrast direction, while the lowest is in the L+M direction. This result holds for all subjects and measurement sets.

The minor axis ratio provides the sensitivity of the minor axis relative to the major axis. We find that the V1 BOLD response is approximately 5 times larger to L-M compared to L+M stimulus modulations, when contrast is defined using vector length in the LM contrast plane. This result is broadly consistent with previous fMRI studies of V1 chromatic contrast sensitivity, although the exact sensitivity ratio varies with the spatial and temporal properties of the stimuli (Engel, Zhang, & Wandell, 1997; Liu & Wandell, 2005; Mullen, Dumoulin, McMahon, de Zubicaray, & Hess, 2007; D'Souza, Auer, Frahm, Strasburger, & Lee, 2016; Mullen, Dumoulin, & Hess, 2010). By considering cortical responses in terms of the parameters of the QCM fit, we are able to provide a quantitative account of chromatic sensitivity, as opposed to a categorical assignment of voxels as “color” or “luminance” responsive.

The QCM also allows us to examine the equivalent contrast response nonlinearity, although doing so is not the focus of this paper. This non-linearity depends on chromatic direction only through a direction-dependent contrast gain that is captured by the isoresponse contour. This can be observed in Figure 7 through the overlap of the non-linearity and the transformed GLM beta weights. Although we used the Naka-Rushton function to fit the nonlinearity, this was a choice of convenience and the precise shape of the non-linearity is not strongly constrained by our data set. This is because our stimuli did not drive the response into the saturating regime (Figure 7, Supplemental Figure S8). A stronger test of the contrast/direction separability embodied by the QCM, as well as stronger constraints on the shape of the non-linearity, would be provided by stimuli that drive the V1 response to saturation.

Links to Other Work.

Many theories of color vision postulate that signals from the L-, M- and S-cone photoreceptors are combined to form three post-receptoral mechanisms, roughly characterized as an additive combination of L- and M-cone contrast (L+M), an opponent combination of L-

and M-cone contrast (L-M), and an opponent combination of S-cone contrast with L- and M-cone contrasts (S-(L+M)) (Stockman & Brainard, 2010; Shevell & Martin, 2017). Our finding that the major and minor axes of the isoresponse ellipse are well-aligned with the L+M and L-M modulation directions is consistent with such theories. An elliptical contour of the orientation we observe is consistent with a mechanistic model that computes equivalent contrast via a weighted sum of the squared responses of the L+M and L-M contrast mechanisms. Note, however, that other pairs of underlying mechanisms are also consistent with the same elliptical isoresponse contours (Poirson, Wandell, Varner, & Brainard, 1990).

A goal of systems neuroscience is to link measurements of neuronal properties to measurements of behavior. In order to make these links, the measurements made in each domain must be placed into a common space for comparison. The QCM provides a way to represent fMRI measurements in a manner that makes such comparisons straightforward. The contrast-invariant isoresponse contour from the QCM provides us with a stimulus-referred characterization of the BOLD fMRI response. Other methodologies, such as psychophysics or electrophysiology, may be used to obtain similar characterizations, allowing for comparisons across response measures within this common framework. For example, an approach to studying chromatic sensitivity is to characterize the “isothreshold contour”, which specifies the set of stimulus modulations that are equally detectable. Engel, Zhang, and Wandell (1997) took this approach and found that for low temporal frequencies the psychophysical and BOLD fMRI contours in the LM contrast plane had similar shapes, while at higher temporal frequencies the psychophysical and BOLD fMRI contours deviated. This dissociation makes it unlikely that the mechanisms that contribute to the BOLD response in V1 limit psychophysical detection at the higher temporal frequencies.

Quadratic models have also been used to characterize the isoresponse properties of individual neurons in macaque V1 (Horwitz & Hass, 2012). Roughly half of the neurons tested in this paper were best fit by quadratic isoresponse surfaces (in the L-, M- and S-cone contrast space) while the other half were well fit by a linear model whose isoresponse surfaces were parallel planes. Of the quadratic isoresponse surfaces, some were ellipsoidal while others were hyperbolic. Connecting the diverse population of individual neural responses to the aggregated BOLD fMRI response remains a challenge for future work (see Schluppeck & Engel, 2002). The QCM aids in this endeavor through its constraint that the aggregated response must lead to elliptical isoresponse contours.

Change of chromatic sensitivity with retinal eccentricity

Many aspects of visual function change with eccentricity (Rosenholtz, 2016), and understanding and quantifying this variation is a key part of a functional characterization of vision. In addition, the variation of chromatic sensitivity with eccentricity can inform as to how signals from separate cone classes are combined by retinal and cortical neural circuitry (Lennie, Haake, & Williams, 1991; Mullen & Kingdom, 1996; Wool et al., 2018). We examined how the parameters of the QCM for individual vertices varied with eccentricity across V1. Overall, we find little change in the shape of the isoresponse contours with eccentricity (Figure 9; Table 1 & 2; Supplemental Figure S9). An examination of the parameters of the elliptical isoresponse contours across V1 shows that the relative sensitivity to modulations in the L-M and L+M directions changes little, if at all, within the central 20° of the visual field. There is a slight,

systematic increase in the angle of the major axis with eccentricity, but this is small relative to the variance at each eccentricity. In addition, we do not observe any clear change in the parameters of the contrast-response function with eccentricity. Overall, the BOLD response to chromatic modulations, as evaluated by the QCM, is remarkably stable across V1.

Several prior studies have used BOLD fMRI to examine how visual cortex responses vary with eccentricity to stimuli modulated in L-M and L+M directions (Vanni, Henriksson, Viikari, & James, 2006; Mullen, Dumoulin, McMahon, de Zubicaray, & Hess, 2007; D'Souza, Auer, Frahm, Strasburger, & Lee, 2016). Both Mullen et al. (2007) and Vanni et al. (2006) report a decrease in the V1 response to L-M modulations with eccentricity, while the response to L+M remains roughly constant. Both speculate that the mechanism underlying this observation is non-selective (random) connections between L and M cones and retinal ganglion cell receptive fields. If these connections are non-selective, L-M sensitivity would be expected to decrease with eccentricity. This is because the area in which receptive fields pool cone inputs increases with distance from the fovea, progressively reducing the likelihood that random L- and M-cone inputs to the center and surround will produce chromatic opponency (Lennie, Haake, & Williams, 1991; Mullen & Kingdom, 1996; Wool et al., 2018). In contrast, D'Souza et al. (2016) find, for the majority of spatial frequencies studied, no change in L-M response relative to the response to isochromatic luminance modulations. This result is generally in line with our data, although at their lowest spatial frequencies D'Souza and colleagues observe a modest decline in relative L-M sensitivity. Following the same line of reasoning as Mullen et al. (2007) and Vanni et al. (2006), D'Souza et al. (2016) take their result as supporting the idea that connections between cones and some classes of ganglion cells are selective for cone type and preserve chromatic sensitivity across the retina.

Comparison between these studies is complicated by variation in the particular stimuli used. Indeed, a dependency on spatial frequency is indicated by the data of D'Souza et al. (2016). More generally, several factors complicate inferring the properties of retinal wiring from either psychophysics or measurements of cortical response. Variation in sensitivity across eccentricity may be mediated by mechanisms other than the cone-specificity of inputs to retinal ganglion cells (Mullen & Kingdom, 1996). For example, the spatial and chromatic tuning of cortical neurons may vary with eccentricity in a manner that is not separable. Such variation could produce both spatial frequency dependence of how relative L-M and L+M sensitivity varies with eccentricity as well as influence sensitivity in a way that is unrelated to retinal wiring.

Another confounding factor is the changes in cone spectral sensitivity with eccentricity, caused primarily by variation in macular pigment and photopigment optical density. This variation can cause modulations that are nominally constant across the visual field to produce eccentricity dependent variation in the degree of actual cone contrast. Prior studies do not account for this variation, leading to the possibility that the effects of eccentricity on sensitivity are due to receptor, rather than post-receptor mechanisms. This variation in cone contrast interacts with the point on the contrast response function at which a particular study operates, an additional factor which can also affect relative sensitivity results. To understand this issue, consider the example in which the response for one chromatic direction is well into the saturated regime of the contrast-response function, while the other direction is not. This could lead to artifacts in the measured ratio of the response to the two directions with eccentricity,

where any change in response for the saturated direction is hidden by a ceiling effect. Our study minimizes the role of these factors in two ways. First, we designed spectral modulations that produce the same contrasts in both 2-degree and 15-degree cone fundamentals (see Methods and Supplementary Tables S2-S4). This reduces the change in cone contrast with eccentricity for our stimuli. Second, we measured and modeled full contrast response functions in each modulation direction, allowing the QCM to extract a contrast independent shape for the isoresponse contours.

Although changes in sensitivity with eccentricity can be caused by mechanisms at many levels of the visual system, the lack of such variation in our data is parsimoniously explained by retinal output that preserves chromatic sensitivity with eccentricity. This interpretation is challenged by studies that show random (Wool et al., 2018) or close to random (Field et al., 2010) inputs from L- and M-cones to midget ganglion cell centers in the retinal periphery. Not all studies of midget cell chromatic responses or their parvocellular LGN counterparts agree with non-selective wiring (Reid & Shapley, 1992; Martin, Lee, White, Solomon, & Ruttiger, 2001; Martin, Blessing, Buzas, Szmajda, & Forte, 2011; Lee, Shapley, Hawken, & Sun, 2012). One possible cortical mechanism that could compensate for the reduced L-M signal-to-noise ratio with eccentricity as predicted by random wiring models is supra-threshold compensation for reduced signals. Mechanisms of this sort have been postulated in the domain of contrast perception (Georgeson & Sullivan, 1975) and anomalous trichromatic vision (Boehm, MacLeod, & Bosten, 2014). Another possibility is a differential change in stimulus integration area across chromatic directions and with eccentricity. However, this latter possibility is not supported by fMRI population receptive field (pRF) measurements for modulations in different chromatic directions in V1 (Welbourne, Morland, & Wade, 2018).

Generalizing the QCM

In this study, we showed that the QCM generalizes well for modulations in the LM contrast plane not used to fit the model parameters. One exception is when the stimulus set used to train the model omits the major axis of the elliptical isoresponse contour. In this case, we find higher uncertainty in the estimated QCM parameters and higher prediction error. This highlights the importance of examining the neural response to chromatic directions near the major axis of the isoresponse contour for proper estimation the QCM parameters (see Poirson & Wandell, 1990; Horiguchi, Winawer, Dougherty, & Wandell, 2013).

The QCM can be further generalized beyond the LM contrast plane. A more general account of chromatic contrast sensitivity requires modulating stimuli in all three-dimension of the full L-, M- and S-cone contrast space. The QCM may be generalized in a straightforward manner to handle this expanded stimulus set by replacing the elliptical isoresponse contours with ellipsoidal isoresponse surfaces, but we have yet to test this generalization.

Another way in which the QCM may be generalized, even within the LM contrast plane, is to consider modulations at other temporal frequencies. In our experiment, we fixed the temporal modulation of the stimulus at 12 Hz. The QCM could be readily fit to data from modulations at various other temporal frequencies with the goal of observing how the chromatic sensitivity changes. With this, one could further examine the BOLD response to mixtures of different temporal frequency modulations. This is particularly interesting in that any arbitrary complex temporal modulation can be decomposed into an additive mixture of

modulations at different temporal frequencies and phases (Bracewell, 1978). If the response to temporal frequency mixtures can be predicted via a simple rule of combination (such as linearity), establishing the QCM parameters for a well-chosen set of temporal frequencies would enable prediction of the BOLD response to chromatic stimuli modulated with complex temporal sequences.

Just as we had a fixed temporal frequency in our experiment, the stimulus presented also had a fixed spatial frequency (0 c.p.d.). Similar to the temporal domain, complex spatial images can be broken down into a combination of oriented 2-dimensional sine wave patterns at single spatial frequencies and phases. Examining how the QCM fits change with changing spatial frequencies might allow for models of the BOLD response to arbitrary complex spatial stimuli. Understanding how both temporal and spatial frequency changes effect V1 sensitivity would facilitate the development of a full spatio-temporal-chromatic model of V1. Consistent with this general goal, recent work has developed quantitative forward models of the BOLD response of early visual cortex to a variety of achromatic modulations with different spatial patterns (Kay, Winawer, Mezer, & Wandell, 2013; Kay, Winawer, Rokem, Mezer, & Wandell, 2013). These models have sequential stages of processing that operate on an input image and transform it into a model of the BOLD response. How such models should be generalized to handle chromatic modulations is not known. If the QCM holds for other spatial frequencies, such a result would place important constraints on the appropriate generalization for such forward models to incorporate color.

Materials and Methods

Subjects

Three subjects (age 23, 25, and 26 years; 2 Female) took part in the fMRI experiment. All subjects had normal or corrected to normal acuity and normal color vision. The research was approved by the University of Pennsylvania Institutional Review Board. All subjects gave informed written consent and were financially compensated for their participation.

Experimental Overview

Each subject participated in four sessions of data collection. The first two sessions constituted Measurement Set 1, and the second two sessions made up Measurement Set 2 (Measurement Set 2 being a replication of Measurement Set 1). In both sessions, subjects underwent 48 minutes of fMRI scanning, with Session 1 also including two anatomical scans (a T1-weighted and a T2-weighted scan). Subjects were tested for color vision deficiencies in a separate session, using the Ishihara pseudoisochromatic plates (Ishihara, 1977). All subjects passed with no errors. The experimental procedures for Measurement Set 1 were preregistered (<https://osf.io/wgfzy/>), and an addendum describes the replication Measurement Set 2 (<https://osf.io/zw6jp/>).

Digital light synthesis and silent substitution

All stimuli were generated using a digital light synthesis device (OneLight Spectra). This device produces desired spectra through the use of a digital micro-mirror device chip that in the configuration we used allows for the mixture of 56 independent primaries with a FWHM of ~16 nm and a refresh rate of 100 Hz.

Stimuli were generated to evoke specific photoreceptor responses through the use of silent substitution (Estévez & Spekreijse, 1982). Silent substitution operates on the principle that there exist sets of light spectra that, when exchanged, selectively modulate the activity of specified cone photoreceptors. Thus, stimulus modulations relative to a background can be generated such that they nominally modulate the activity of only the L-, M-, or S-cones, or combinations of cone classes at specified contrasts. Additional information on how the stimuli were generated is provided in Spitschan et al. (2015).

The stimuli account for differences in the cone fundamentals between the fovea and the periphery. This was done by treating the L, M, and S cones in the 2- and 15-degree CIE physiologically-based cone fundamentals (CIE, 2007) as six classes of photoreceptors. For any desired set of L-, M-, and S-cone contrasts, we designed modulations that attempted to provide the same contrasts on the 2- and 15-degree L-cone fundamentals, on the 2- and 15-degree M-cone fundamentals, and on the 2- and 15-degree S-cone fundamentals. This is possible because our device has 56 primaries, rather than the typical 3 of RGB displays. Our procedure has the effect of creating light spectra that reduce differences in the L-, M- and S-cone contrasts produced across the retina. The cone fundamentals were tailored to the age of each subject, to account for age-related differences in typical lens density (CIE, 2007). See Supplementary Tables S2-S4 for the central and peripheral maximum stimulus contrast values for each subject and measurement set.

Spectroradiometric measurements of the stimuli were made before and after each experimental session. During the measurements made prior to the experiment, a correction procedure was run in which the spectral power distribution of the modulation in each chromatic direction were adjusted to minimize the difference between the measured and desired cone contrasts for the 2- and 15-degree cone fundamentals. These corrections were made to the modulation spectra at the maximum contrast used in each direction. Additional information about the correction procedure is provided in McAdams et al. (2020). The order in which spectroradiometric measurements were taken during an experimental session was 1) five pre-correction measurements for each chromatic direction used in the session, 2) the corrections procedure, 3) five post-correction measurements per direction, and 4) five post-experiment measurements per direction. The mean of post-correction and post-experiment cone contrast measurements for the individual subjects and measurement sets are provided in Supplementary Tables S2-S4.

Visual Stimuli

The stimuli were confined to the LM plane of cone contrast space (Figure 11A; see also Figure 1A). Cone contrast space has three axes that are defined by the relative change in the quantal catch of the L, M, and S cones when modulating between the light spectra of interest and a specified reference spectrum. We refer to the reference spectrum used to calculate this relative change in cone excitations as the background (nominal chromaticity; $x = 0.459$, $y = 0.478$, luminance $Y = 426 \text{ cd/m}^2$; chromaticity and luminance computed with respect to the XYZ 10° physiologically-relevant color matching functions, as provided at <https://cvrl.org>). The background corresponds to the origin of cone contrast space. The LM contrast plane is a subspace of cone contrast space consisting of modulations that affect only L- and M-cone excitations, but which leave S-cone excitations unchanged relative to the background. A point

in cone contrast space specifies how much L- and M-cone contrast is produced by modulating from the background to the specified stimulus. Points lying along the x-axis of Figure 11A modulate only L-cone contrast while M-cone contrast remains constant. Points lying along the y-axis modulate only M-cone contrast while keeping L-cone contrast constant. Points in intermediate directions modulate both L- and M-cone contrast, in proportion to the x- and y-axis components.

All stimuli were spatially uniform (0 c.p.d.), full-field temporal modulations with a radius of 30° visual angle. The temporal modulations were bipolar sinusoids around the reference background, with the positive and negative arms designed to increase and decrease targeted cone excitations in a symmetric fashion. All stimuli were modulated at 12 Hz (Figure 11B). A single modulation is thus described by pair of vectors in the LM contrast plane that have an angle of 180° between them, corresponding to the positive and negative arms of the modulation (Figure 11A). The entries of the vectors are the L- and M-cone contrasts of the end points of each arm. In this paper, we refer to a modulation by the angle made between its positive arm and the positive x-axis (corresponding to 0° in the LM contrast plane), with angle increasing counterclockwise. We refer to each angle tested as a chromatic direction. In total, we tested the eight chromatic directions: -45°, -22.5°, 0°, 22.5°, 45°, 67.5°, 90°, and 112.5°. The -45°, 0°, 45°, and 90° directions correspond to L-M, L-cone isolating, L+M, and M-cone isolating directions respectively. For all chromatic directions, the spectra were designed to keep S-cone contrast constant.

We compute the stimulus contrast of a modulation as the vector length (L2 norm) of the cone contrast representation of its positive arm (Figure 11A). Gamut limitations of the light synthesis engine result in different maximum stimulus contrasts for different chromatic directions (see heavy dashed contour in Figure 11A). The maximum contrast used in each direction is provided in Supplemental Table S1. For all directions, we tested five contrast levels. The contrast levels tested for each chromatic direction were selected to be log spaced relative to the maximum contrast used. The relative contrasts were 100, 50, 25, 12.5, and 6.25 percent. We also measured a 0 contrast reference condition in which the background without modulation was presented.

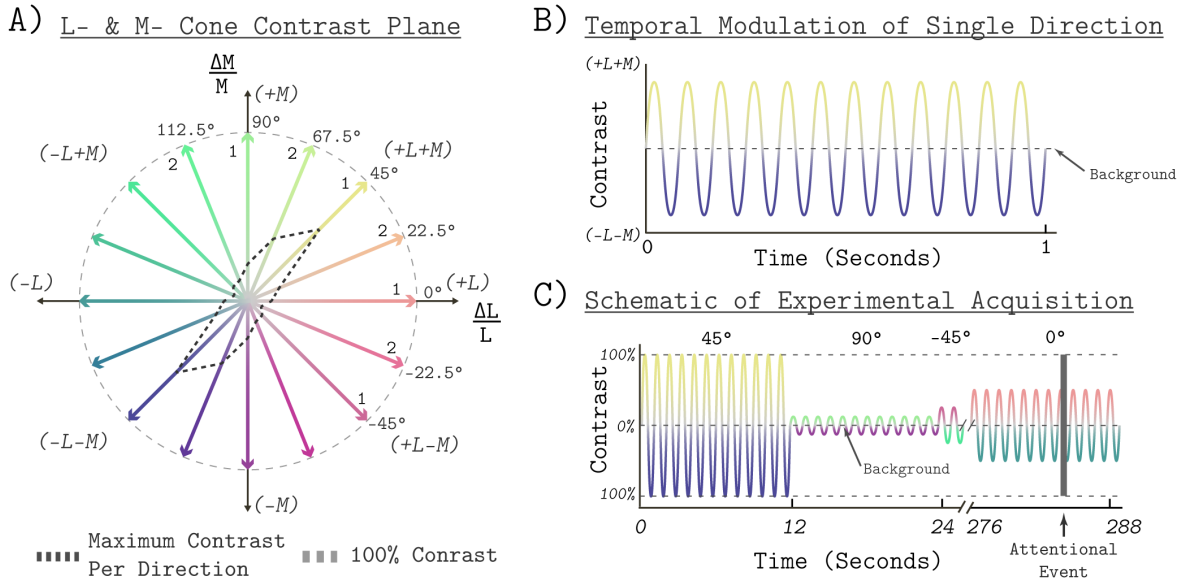


Figure 11: Stimulus space and temporal modulations. A) The LM contrast plane. A two-dimensional plane made up of axes that represent the change in L- and M-cone activity relative to the background cone activation, in units of cone contrast. Each aligned pair of vectors in this space represents the positive (increased activation) and negative (decreased activation) arms of the bipolar temporal modulations. We refer to each modulation by the angle of the positive arm in the LM contrast plane, with positive $\Delta L/L$ being at 0°. The black dashed lines show the maximum contrast used in each direction. The gray dashed circle shows 100% contrast. The “1” or “2” next to each positive arm denotes which session the direction was grouped into for testing. The grouping was the same for Measurement Set 1 and Measurement Set 2. B) The temporal profile of a single bipolar chromatic modulation. This shows how the cone contrast of a stimulus changed over time between the positive and negative arms for a given chromatic direction. The particular direction plotted corresponds to the 45° modulation at 12 Hz temporal frequency. The temporal profile was the same for all chromatic directions. C) Schematic of the block structure of an experimental run. Blocks lasted 12 seconds and all blocks were modulated around the same background. The amplitude of the modulation represents the contrast scaling, relative to its maximum contrast, for that block. Each run lasted a total of 288 seconds. The dark gray vertical bar represents an attentional event in which the light stimulus was dimmed for 500 milliseconds.

Experimental Design

We measured whole brain BOLD fMRI responses to stimuli modulated in eight different chromatic directions, each with five contrast levels, using a block design. In total, we tested 40 different combinations of contrast levels and chromatic directions. We split the eight chromatic directions into two separate scanning sessions of four directions each (Figure 12A). In Session 1, we tested -45° (L-M), 0° (L Isolating), 45° (L+M), and 90° (M Isolating). In Session 2, we tested the other four directions (-22.5°, 22.5°, 67.5°, and 112.5°). Which session a subject started with was randomized across subjects. A session consisted of 10 runs and each run had a duration of 288 seconds. Within a run, each contrast/direction pair was presented once for the duration a single 12-second block (Figure 12). The order of contrast/direction pairs was pseudorandomized within each run. Along with four presentations of a background-only block, each run consisted of 24 blocks. The background-only blocks contained no temporal contrast modulation, providing a reference condition for data analysis. We chose 12 Hz modulations based upon prior work showing that for stimuli similar to the ones used in this study (L+M and L-M), this frequency elicited a robust response in V1 (Spitschan, Datta, Stern, Brainard, & Aguirre, 2016). Within a block, modulations were ramped on and off using a 500 ms half-cosine. Figure 11C provides a schematic of the structure of an experimental run.

During each functional run, subjects engaged in an attentional task. This task consisted of pressing a button every time the stimulus dimmed (Figure 11C). Each attentional event lasted for 500 ms. The probability of an attentional event occurring in a block was 66% in Measurement Set 1 and a 33% in Measurement Set 2. The onset time of an attentional event within a block was random except that the event could not occur during the on and off half-cosine ramp. The purpose of the attentional task was to encourage and monitor subject wakefulness throughout the scan session. All subjects responded to 100% of the attentional events throughout all runs and sessions.

Each subject was studied during an initial pair of scanning sessions that we call Measurement Set 1 (Figure 12A), and a subsequent pair of replication scans that we call Measurement Set 2 (Figure 12B). Measurement Set 2 tested stimuli with the same chromatic directions and contrast levels as Measurement Set 1. The grouping of chromatic directions within a session was the same across measurement sets. The two measurement sets used different pseudo-randomized presentation orders. Both measurement sets also randomly assigned which session was acquired first. Across both sessions and measurements sets, we collected a total of 960 blocks per subject. The two measurement sets were analyzed separately.

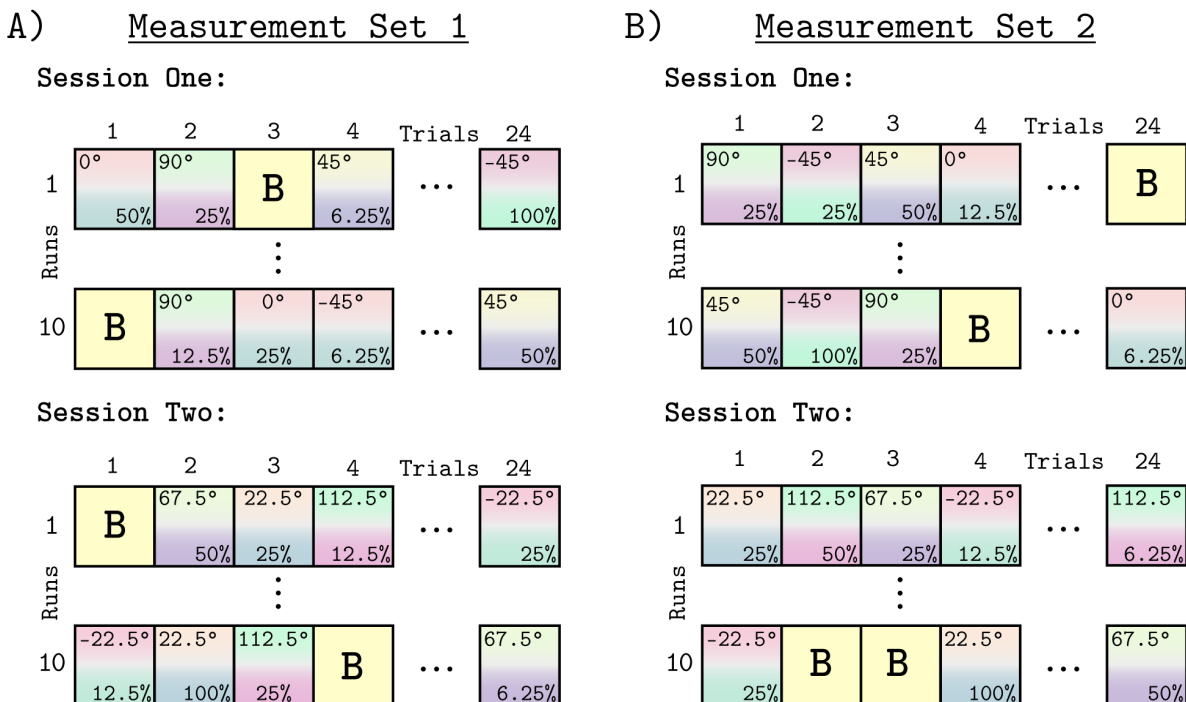


Figure 12: Experimental design. Panels A and B show the block design used for all runs and sessions. Panel A shows Measurement Set 1 which contained two separate MRI sessions. Each session contained four of the eight chromatic directions. The split of directions across the two sessions was the same for all subjects, but which session each subject started with was randomized. Within a session we collected 10 experimental runs, each containing 24 blocks. The 24 blocks consisted of 20 direction/contrast paired stimulus blocks (depicted by the gradient squares with direction noted at top and the contrast at bottom of each square) and 4 background blocks (squares marked “B”). The order of blocks within each run was randomized, with each contrast/direction pair shown once per run. Each run had a duration of 288 second. Panel B shows Measurement Set 2, which was a replication of Measurement Set 1, with session order and order

MRI Data Acquisition

MRI scans made use of the Human Connectome Project LifeSpan protocol (VD13D) implemented on a 3-Tesla Siemens Prisma with a 64-channel Siemens head coil. A T1-weighted, 3D, magnetization-prepared rapid gradient-echo (MPRAGE) anatomical image was acquired for each subject in axial orientation with 0.8 mm isotropic voxels, repetition time (TR) = 2.4 s, echo time (TE) = 2.22 ms, inversion time (TI) = 1000 ms, field of view (FoV) = 256 mm, flip angle = 8°. BOLD fMRI data were obtained over 72 axial slices with 2 mm isotropic voxels with multi-band = 8, TR = 800 ms, TE = 37 ms, FOV = 208 mm, flip angle = 52°. Head motion was minimized with foam padding.

During MRI scanning, subjects were supine inside the magnet. Visual stimuli were presented through an MRI compatible eyepiece to the right eye of the subject. Stimuli were delivered from the digital light synthesizer through a randomized optical fiber cable (Fiberoptics Technology Inc.). The randomization of the fiber optic cable helped to minimize any spatial inhomogeneities in the spectrum of the stimulus. The eye piece provided adjustable focus to account for variation in refractive error. As the stimulus was a spatially uniform field, however, the effect of any spatial blur upon the stimulus was minimal.

Subjects used either button of a 2 button MR compatible response device (Current Designs) to respond to attention events during the functional runs.

MRI Data Preprocessing

Both anatomical and functional data were preprocessed according to the HCP minimal preprocessing pipeline (Glasser et al., 2013) Briefly, the anatomical data were passed through the pre-freesurfer, freesurfer, and post-freesurfer steps of the HCP minimal preprocessing pipeline. This was used to create an MNI registration, a Freesurfer segmentation (Dale, Fischl, & Sereno, 1999; Fischl, Sereno, & Dale, 1999), and a surface mesh. The functional data were preprocessed with both the volume and surface pipelines. The volume pipeline applied gradient distortion correction, motion correction (FLIRT 6 DoF; Jenkinson, 2002), top-up phase encoding distortion correction (Smith et al., 2004), and registered the functional images to the anatomical images. The surface pipeline mapped the volume data to the CIFTI grayordinate space which includes a left and right 32K cortical surface mesh and subcortical voxels. Finally, the functional data were passed through the ICAFIX pipeline, which uses independent component analysis and noise/not-noise classification to denoise the time course.

After initial preprocessing, we performed a series of subsequent steps before analyzing the time course data. We used a V1 region of interest (ROI) to extract the time series from primary visual cortex (see below for definition of retinotopic maps). The signals from each voxel were mean centered and converted to percent signal change. We then performed nuisance regression using the relative motion estimates and attentional events as regressors. The relative motion regressors (translation of X, Y, and Z and yaw, pitch, and roll) were mean centered and scaled by their respective standard deviations. The attention event regressor was modeled as a series of delta functions located within the TRs in which the events occurred, convolved with a hemodynamic response function. The nuisance regression was performed using the MATLAB built in linear regression function `mldivide` (MathWorks) with the residual of the model used as the “cleaned” timed series.

Next, we time-point censored the time series of all voxels based on the motion estimates. This was done using a modified version of Power et al. (2014). We converted the relative yaw, pitch, and roll estimates to millimeters by using the distance that each of these angles subtend on an assumed 50 mm sphere. We then took the L2-norm of the 6 translation and mm rotation estimates as a metric of frame-wise displacement (FD). We censored three contiguous TRs centered on any time point with an FD > 0.5. Time points that exceeded the threshold were excluded from analysis, and a table of the number of censored frames can be found in the supplemental materials (Supplemental Table S5). Finally, we applied polynomial detrending by fitting a fifth order polynomial to the time course from each voxel and subtracting it from the signal. Analyses performed at the level of V1 were done using the median value across voxels at each time point to represent the V1 signal. Vertex-wise analyses were performed on the preprocessed time course of individual vertices.

Definition of retinotopic maps

Retinotopic regions of interest (ROI) were defined using the anatomical template neurophysiology (Benson, Butt, Brainard, & Aguirre, 2014) which provides eccentricity and polar angle maps for V1, V2, and V3. From this atlas, we defined a V1 ROI using the voxels in area V1 between 0-20° eccentricity and 0-180° polar angle. We set the eccentricity upper bound of the ROI to be 20° to provide a conservative boundary to ensure that we only analyzed stimulated vertices. This accounts for some uncertainty in the exact retinal size of the stimulated area due to, for example, variation in the distance of the eyepiece to the eye of the subject.

Subject Specific Hemodynamic Response Function

We derived subject-specific hemodynamic response functions (HRFs) for each subject and measurement set. The HRF was derived using all the functional runs within a measurement set, using the V1 region of interest median data. The time-series data was fit with a non-linear model that simultaneously estimated the beta weights of the GLM to fit stimulus responses, and the parameters of an HRF model. The HRF model was composed of the first three components of the “FLOBS” basis set (Woolrich, Behrens, & Smith, 2004). The best fitting HRF model was then used to fit that subject’s data for both the GLM and QCM models.

General Linear Model

We used an ordinary least squares regression with a stimulus design matrix that described the stimulus order of a run. The regression matrix contained one regressor per stimulus block as well as a single regressor for the baseline, with the length of the regressor equal to the number of timepoints (360 TRs). The regressor for each stimulus block in a run was modeled by a binary vector that indicated the timepoints when the stimulus was present (ones) or absent (zeros), convolved with the HRF. This resulted in 21 GLM beta weights per run. For all analyses, model fitting was performed using the concatenation of all functional runs within a measurement set. For fitting of the GLM, we concatenated the stimulus design matrices such that like contrast/direction pairs were modeled by the same regressor. The concatenated stimulus design matrix for a measurement set had a total of 41 regressors (20 direction/contrast pairs from Session 1, 20 direction/contrast pairs from Session 2, and a shared baseline regressor) and 7200 timepoints. Additional details of the GLM are provided in the Model Appendix section.

Contrast Response Functions

To obtain contrast response function for each color direction, the time course data for each run was fit using a general linear model to obtain the effect that each stimulus had on the BOLD fMRI response. Grouping the GLM beta weights by chromatic direction defined a set of 8 contrast response functions (CRFs), one per direction. A CRF describes the relationship, within a particular chromatic direction, between the contrast of the stimulus and the measured response. The CRFs obtained using the GLM beta weights fit to the concatenated time series of Subject 2 can be seen in Figure 3. The panels of Figure 3 show the CRFs for the eight different chromatic directions. The CRFs for Subject 1 and 2 can be seen in Supplementals Figures S1 and S2.

Error Bar Generation

The error bars and error regions in all figures are the 68 percent confidence intervals. These confidence intervals are the result of a bootstrap analysis. The bootstrap analysis was implemented as random sampling with replacement of the runs within a measurement set. The randomly drawn runs in both sessions were concatenated and fit by all models. We performed 200 bootstrap iterations and identified the 68% percent confidence interval from the bootstrap results.

Leave-Runs-Out Cross-Validation

To evaluate model performance, we employed a leave-runs-out cross-validation strategy. For each cross-validation iteration, runs from Session 1 and Session 2 were randomly paired within the same measurement set. These pairs of runs were held out and the models were fit to the remaining 18 runs. From these model fits, a time course prediction for the left-out runs were obtained from both models. We computed the R^2 value between these predictions and the time course of the held-out runs. The average R^2 value across the 10 cross-validation iterations was used to compare models.

Leave-Session-Out Cross-Validation

To evaluate the generalizability of the QCM, we implemented a leave-session-out cross-validation. As the eight chromatic directions tested were separated into two sessions with the same grouping across all subjects and measurement sets, we could evaluate the ability of the QCM to make predictions for chromatic directions and contrasts not used to fit the model parameters. Within each measurement set, we fit the QCM to Sessions one and two separately and evaluated how well the parameters of the model predicted responses to stimulus directions in the held-out session. These predicted responses were grouped by chromatic direction in order to construct a set of contrast response functions. The error bars in the CRFs are the 68% confidence intervals computed using bootstrapping, where we randomly sampled runs with replacement and compute the leave-session-out cross-validation a total a 200 times.

Surface Parameter Map Generation

Cortical surface maps were generated to visualize the ellipse angle and minor axis ratio parameters of the QCM on the V1 cortical surface. To generate the surface parameter maps, we fit the QCM, within a single vertex, to the concatenated time course from all runs in a measurement set. We repeat this fit for all vertices within the visual areas template map from neuropythy (Benson, Butt, Brainard, & Aguirre, 2014). To visualize the surface parameter maps

in a manner that highlights differences in fits as a function of cortical position, we created a series of scatter plots that relate the minor axis ratio and angle parameters to the eccentricity of their respective vertices. The regression lines in the scatter plots are robust regression lines implemented through the built in MATLAB function `robustfit` which adaptively reweights the data to discount the effects of outliers.

Parameter fitting

To fit the QCM, we must fit the parameters to data collected for each subject. We fit the model to concatenated time series for both sessions within a measurement set. The data was fit using the MATLAB function `fmincon` to find a set of parameters that minimize the difference between the actual fMRI time course and the QCM prediction of the time course.

Acknowledgments

This work has been supported by the National Institutes of Health (Grants:RO1 EY10016 and Core GrantP30 EY001583; <https://www.nih.gov/>) and National Science Foundation Graduate Research Fellowship (DGE-1845298). We would like to thank Joris Vincent, Jack Ryan, Ozenc Taskin, and Nicolas Cottaris for technical assistance.

Competing Interests

The authors have no competing interests with this work.

References

- Bartels, A., & Zeki, S. (2000). The architecture of the colour centre in the human visual brain: new results and a review. *European Journal of Neuroscience*, *12*(1), 172-190.
- Beauchamp, M. S., Haxby, J. V., Jennings, J. E., & DeYoe, E. A. (1999). An fMRI version of the Farnsworth-Munsell 100-hue test reveals multiple color-selective areas in human ventral occipitotemporal cortex. *Cerebral Cortex*, *9*(3), 257-263.
- Benson, N. C., Butt, O. H., Brainard, D. H., & Aguirre, G. K. (2014). Correction of distortion in flattened representations of the cortical surface allows prediction of V1-V3 functional organization from anatomy. *PLoS Comput Biol*, *10*(3), e1003538.
- Boehm, A. E., MacLeod, D. I., & Bosten, J. M. (2014). Compensation for red-green contrast loss in anomalous trichromats. *J Vis*, *14*(13), 19.
- Bracewell, R. N. (1978). *The Fourier Transform and its Applications*: McGraw-Hill.
- Brainard, D. H. (1996). Cone contrast and opponent modulation color spaces. In P. K. Kaiser & R. M. Boynton (Eds.), *Human Color Vision* (2 ed., pp. 563-579). Washington, D.C.: Optical Society of America.
- Brainard, D. H., Pelli, D. G., & Robson, T. (2002). Display characterization. In J. P. Hornak (Ed.), *Encyclopedia of Imaging Science and Technology* (pp. 172-188). New York: Wiley.
- Brainard, D. H., & Stockman, A. (2010). Colorimetry. In M. Bass, C. DeCusatis, J. Enoch, V. Lakshminarayanan, G. Li, C. Macdonald, V. Mahajan & E. van Stryland (Eds.), *The Optical Society of America Handbook of Optics, 3rd edition, Volume III: Vision and Vision Optics* (pp. 10.11-10.56). New York: McGraw Hill.

- CIE. (2007). *Fundamental chromaticity diagram with physiological axes – Parts 1 and 2. Technical Report 170-1*. Vienna: Central Bureau of the Commission Internationale de l'Éclairage.
- Cottaris, N. P., Jiang, H., Ding, X., Wandell, B. A., & Brainard, D. H. (2019). A computational observer model of spatial contrast sensitivity: Effects of wavefront-based optics, cone mosaic structure, and inference engine. *Journal of Vision, 19*(4), 8.
- D'Souza, D. V., Auer, T., Frahm, J., Strasburger, H., & Lee, B. B. (2016). Dependence of chromatic responses in V1 on visual field eccentricity and spatial frequency: an fMRI study. *J Opt Soc Am A Opt Image Sci Vis, 33*(3), A53-64.
- Dale, A. M., Fischl, B., & Sereno, M. I. (1999). Cortical surface-based analysis. I. Segmentation and surface reconstruction. *Neuroimage, 9*(2), 179-194.
- Derrington, A. M., Krauskopf, J., & Lennie, P. (1984). Chromatic mechanisms in lateral geniculate nucleus of macaque. *Journal of Physiology, 357*, 241-265.
- DeValois, R. L., Abramov, I., & Jacobs, G. H. (1966). Analysis of response patterns of LGN cells. *Journal of the Optical Society of America, 56*, 966-977.
- Engel, S., Zhang, X. M., & Wandell, B. (1997). Colour tuning in human visual cortex measured with functional magnetic resonance imaging. *Nature, 388*(6637), 68-71.
- Estévez, O., & Spekreijse, H. (1982). The "silent substitution" method in visual research. *Vision Research, 22*, 681-691.
- Field, G. D., Gauthier, J. L., Sher, A., Greschner, M., Machado, T. A., Jepsen, L. H., Shlens, J., Gunning, D. E., Mathieson, K., Dabrowski, W., Paninski, L., Litke, A. M., & Chichilnisky, E. J. (2010). Functional connectivity in the retina at the resolution of photoreceptors. *Nature, 467*(7316), 673-677.
- Fischl, B., Sereno, M. I., & Dale, A. M. (1999). Cortical surface-based analysis. II: Inflation, flattening, and a surface-based coordinate system. *Neuroimage, 9*(2), 195-207.
- Gegenfurtner, K. (2001). Color in the cortex revisited. *Nature Neuroscience, 4*(4), 339-340.
- Geisler, W. S. (1989). Sequential ideal-observer analysis of visual discriminations. *Psychological Review, 96*(2), 267-314.
- Georgeson, M. A., & Sullivan, G. D. (1975). Contrast constancy: Deblurring in human vision by spatial frequency channels. *Journal of Physiology (London), 253*, 627-656.
- Glasser, M. F., Sotiropoulos, S. N., Wilson, J. A., Coalson, T. S., Fischl, B., Andersson, J. L., Xu, J., Jbabdi, S., Webster, M., Polimeni, J. R., Van Essen, D. C., Jenkinson, M., & Consortium, W. U.-M. H. (2013). The minimal preprocessing pipelines for the Human Connectome Project. *Neuroimage, 80*, 105-124.
- Goddard, E., Mannion, D. J., McDonald, J. S., Solomon, S. G., & Clifford, C. W. (2011). Color responsiveness argues against a dorsal component of human V4. *J Vis, 11*(4)
- Hadjikhani, N., Liu, A. K., Dale, A. M., Cavanagh, P., & Tootell, R. B. H. (1998). Retinotopy and color sensitivity in human visual cortical area V8. *Nature Neuroscience, 1*(3), 235-241.
- Horiguchi, H., Winawer, J., Dougherty, R. F., & Wandell, B. A. (2013). Human trichromacy revisited. *Proceedings of the National Academy of Science U.S.A., 110*(3), E260-E269.
- Horwitz, G. D. (2020). Signals Related to Color in the Early Visual Cortex. *Annu Rev Vis Sci, 6*, 287-311.
- Horwitz, G. D., & Hass, C. A. (2012). Nonlinear analysis of macaque V1 color tuning reveals cardinal directions for cortical color processing. *Nat Neurosci, 15*(6), 913-919.

- Hunt, R. W. G. (2004). *The Reproduction of Colour* (6 ed.). Chichester, England: John Wiley & Sons.
- Ishihara, S. (1977). *Tests for Colour-Blindness*. Tokyo: Kanehara Shuppen Company, Ltd.
- Jenkinson, M. (2002). Improved Optimization for the Robust and Accurate Linear Registration and Motion Correction of Brain Images. *NeuroImage*, *17*(2):825, 825-841.
- Johnson, E. N., Hawken, M. J., & Shapley, R. (2004). Cone inputs in macaque primary visual cortex. *Journal of Neurophysiology*, *91*(6), 2501-2514.
- Kay, K. N., Winawer, J., Mezer, A., & Wandell, B. A. (2013). Compressive spatial summation in human visual cortex. *J Neurophysiol*, *110*(2), 481-494.
- Kay, K. N., Winawer, J., Rokem, A., Mezer, A., & Wandell, B. A. (2013). A two-stage cascade model of BOLD responses in human visual cortex. *PLoS Comput Biol*, *9*(5), e1003079.
- Krauskopf, J., Williams, D. R., & Heeley, D. W. (1982). Cardinal directions of color space. *Vision Research*, *22*(9), 1123-1131.
- Lafer-Sousa, R., Conway, B. R., & Kanwisher, N. G. (2016). Color-biased regions of the ventral visual pathway lie between face- and place-selective regions in humans, as in macaques. *Journal of Neuroscience*, *36*(5), 1682-1697.
- Lee, B. B., Shapley, R. M., Hawken, M. J., & Sun, H. (2012). Spatial distributions of cone inputs to cells of the parvocellular pathway investigated with cone-isolating gratings. *Journal of the Optical Society of America A*, *29*(2), A223-A232.
- Lennie, P., Haake, P. W., & Williams, D. R. (1991). The design of chromatically opponent receptive fields. In M. S. Landy & J. A. Movshon (Eds.), *Computational models of visual processing* (pp. 71-82). Cambridge, Mass.: MIT Press.
- Lennie, P., & Movshon, J. A. (2005). Coding of color and form in the geniculostriate visual pathway. *Journal of the Optical Society of America A*, *10*(10), 2013-2033.
- Liu, J., & Wandell, B. A. (2005). Specializations for chromatic and temporal signals in human visual cortex. *J Neurosci*, *25*(13), 3459-3468.
- Martin, P. R., Blessing, E. M., Buzas, P., Szmajda, B. A., & Forte, J. D. (2011). Transmission of colour and acuity signals by parvocellular cells in marmoset monkeys. *The Journal of Physiology*, *589*(Pt 11), 2795-2812.
- Martin, P. R., Lee, B. B., White, A. J., Solomon, S. G., & Rüttiger, L. (2001). Chromatic sensitivity of ganglion cells in the peripheral primate retina. *Nature*, *410*(6831), 933-936.
- McAdams, H., Kaiser, E. A., Igdalova, A., Haggerty, E. B., Cucchiara, B., Brainard, D. H., & Aguirre, G. K. (2020). Selective amplification of ipRGC signals accounts for interictal photophobia in migraine. *Proc Natl Acad Sci U S A*, *117*(29), 17320-17329.
- Mullen, K., Dumoulin, S., & Hess, R. (2010). Color processing in the human LGN and cortex measured with fMRI. *Journal of Vision*, *7*(15):4, 4-4.
- Mullen, K. T., Dumoulin, S. O., McMahan, K. L., de Zubicaray, G. I., & Hess, R. F. (2007). Selectivity of human retinotopic visual cortex to S-cone-opponent, L/M-cone-opponent and achromatic stimulation. *Eur J Neurosci*, *25*(2), 491-502.
- Mullen, K. T., & Kingdom, F. A. A. (1996). Losses in peripheral colour sensitivity predicted from "hit and miss" post-receptoral cone connections. *Vision Research*, *36*(13), 1995-2000.
- Mullen, K. T., Thompson, B., & Hess, R. F. (2010). Responses of the human visual cortex and LGN to achromatic and chromatic temporal modulations: an fMRI study. *J Vis*, *10*(13), 13.

- Poirson, A. B., & Wandell, B. A. (1990). The ellipsoidal representation of spectral sensitivity. *Vision Research*, *30*(4), 647-652.
- Poirson, A. B., Wandell, B. A., Varner, D. C., & Brainard, D. H. (1990). Surface characterizations of color thresholds. *Journal of the Optical Society of America A*, *7*(4), 783-789.
- Power, J. D., Mitra, A., Laumann, T. O., Snyder, A. Z., Schlaggar, B. L., & Petersen, S. E. (2014). Methods to detect, characterize, and remove motion artifact in resting state fMRI. *Neuroimage*, *84*, 320-341.
- Reid, R. C., & Shapley, R. M. (1992). Spatial structure of cone inputs to the receptive fields in primate lateral geniculate nucleus. *Nature*, *356*(6371), 716-718.
- Rosenholtz, R. (2016). Capabilities and Limitations of Peripheral Vision. *Annu Rev Vis Sci*, *2*, 437-457.
- Schluppeck, D., & Engel, S. A. (2002). Color opponent neurons in V1: A review and model reconciling results from imaging and single-unit recording. *Journal of Vision*, *2*, 480-492.
- Shapley, R., & Hawken, M. J. (2011). Color in the Cortex: single- and double-opponent cells. *Vision Research*, *51*(7), 701-717.
- Shevell, S. K., & Martin, P. R. (2017). Color opponency: tutorial. *J Opt Soc Am A Opt Image Sci Vis*, *34*(7), 1099-1108.
- Smith, S. M., Jenkinson, M., Woolrich, M. W., Beckmann, C. F., Behrens, T. E., Johansen-Berg, H., Bannister, P. R., De Luca, M., Drobnjak, I., Flitney, D. E., Niazy, R. K., Saunders, J., Vickers, J., Zhang, Y., De Stefano, N., Brady, J. M., & Matthews, P. M. (2004). Advances in functional and structural MR image analysis and implementation as FSL. *Neuroimage*, *23* Suppl 1, S208-219.
- Solomon, S. G., & Lennie, P. (2005). Chromatic gain controls in visual cortical neurons. *J Neurosci*, *25*(19), 4779-4792.
- Solomon, S. G., & Lennie, P. (2007). The machinery of colour vision. *Nature Reviews Neuroscience*, *8*(4), 276-286.
- Spitschan, M., Aguirre, G. K., & Brainard, D. H. (2015). Selective stimulation of penumbral cones reveals perception in the shadow of retinal blood vessels. *PLoS One*, *10*(4), e0124328.
- Spitschan, M., Datta, R., Stern, A. M., Brainard, D. H., & Aguirre, G. K. (2016). Human visual cortex responses to rapid cone and melanopsin-directed flicker. *J Neurosci*, *36*(5), 1471-1482.
- Stockman, A., & Brainard, D. H. (2010). Color vision mechanisms. In M. Bass, C. DeCusatis, J. Enoch, V. Lakshminarayanan, G. Li, C. Macdonald, V. Mahajan & E. van Stryland (Eds.), *The Optical Society of America Handbook of Optics, 3rd edition, Volume III: Vision and Vision Optics* (pp. 11.11-11.104). New York: McGraw Hill.
- Tailby, C., Solomon, S. G., Dhruv, N. T., & Lennie, P. (2008). Habituation reveals fundamental chromatic mechanisms in striate cortex of macaque. *Journal of Neuroscience*, *28*(5), 1131-1139.
- Vanni, S., Henriksson, L., Viikari, M., & James, A. C. (2006). Retinotopic distribution of chromatic responses in human primary visual cortex. *Eur J Neurosci*, *24*(6), 1821-1831.
- Wandell, B. A., Dumoulin, S. O., & Brewer, A. A. (2006). Computational Neuroimaging; Color Signals in the Visual Pathways. *Neuro-ophthalmol. Jpn.*, *23*, 324-343.
- Wandell, B. A., & Silverstein, L. D. (2003). Digital color reproduction. In S. K. Shevell (Ed.), *The Science of Color* (2 ed., pp. 281-316). Oxford: Optical Society of America; Elsevier Ltd.

- Welbourne, L. E., Morland, A. B., & Wade, A. R. (2018). Population receptive field (pRF) measurements of chromatic responses in human visual cortex using fMRI. *Neuroimage*, *167*, 84-94.
- Weller, J. P., & Horwitz, G. D. (2018). Measurements of neuronal color tuning: Procedures, pitfalls, and alternatives. *Vision Res*, *151*, 53-60.
- Wool, L. E., Crook, J. D., Troy, J. B., Packer, O. S., Zaidi, Q., & Dacey, D. M. (2018). Nonselective wiring accounts for red-green opponency in midget ganglion cells of the primate retina. *Journal of Neuroscience*, *38*(6), 1520-1540.
- Woolrich, M. W., Behrens, T. E., & Smith, S. M. (2004). Constrained linear basis sets for HRF modelling using Variational Bayes. *Neuroimage*, *21*(4), 1748-1761.

I.

Supplemental Figures and Tables

II.

Model Appendix

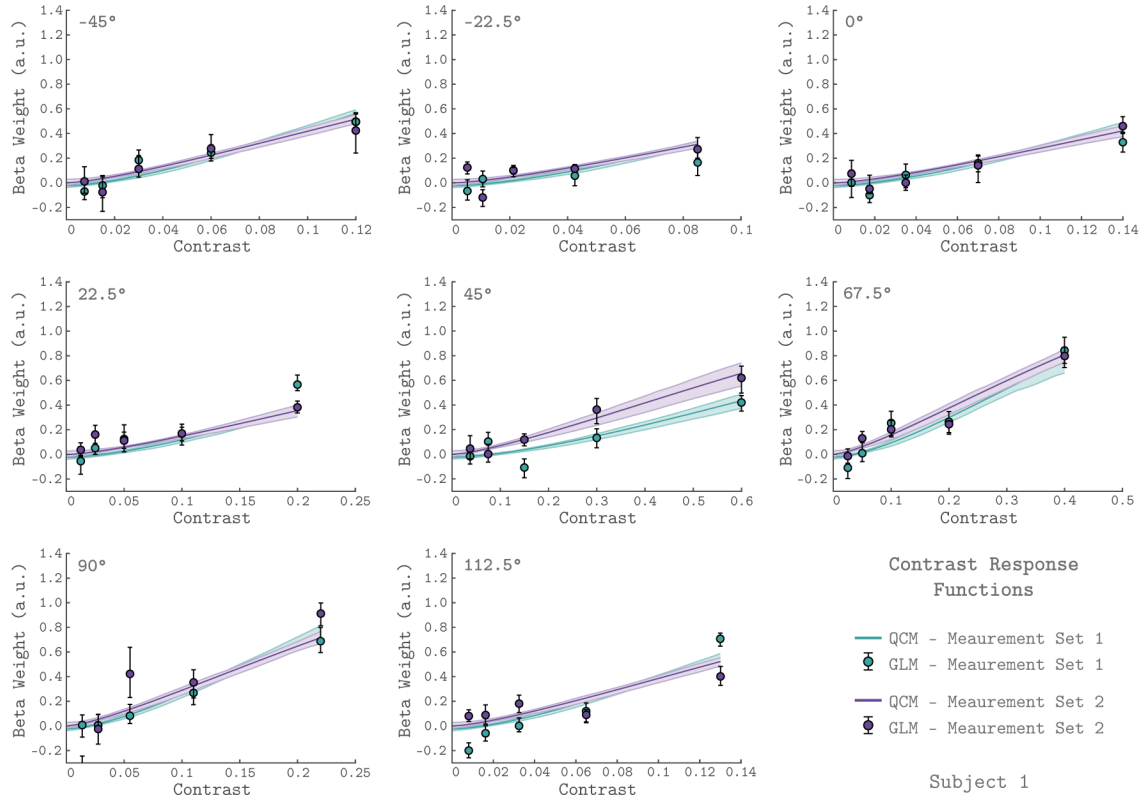


Figure S1: V1 contrast response functions for the eight measured chromatic directions from Subject 1. The format of the figure is the same as Figure 2 in the main text. The x-axis is contrast; the y-axis is the beta weight of the GLM. The chromatic direction of each stimulus is indicated in the upper left of each panel. The curves in each panel represent the contrast response function obtained using the QCM. The error bars indicate 68% confidence intervals obtained using bootstrapping. Measurement sets 1 and 2 are shown in green and purple. The x-axis range differs across panels as the maximum contrast used varies with color direction.

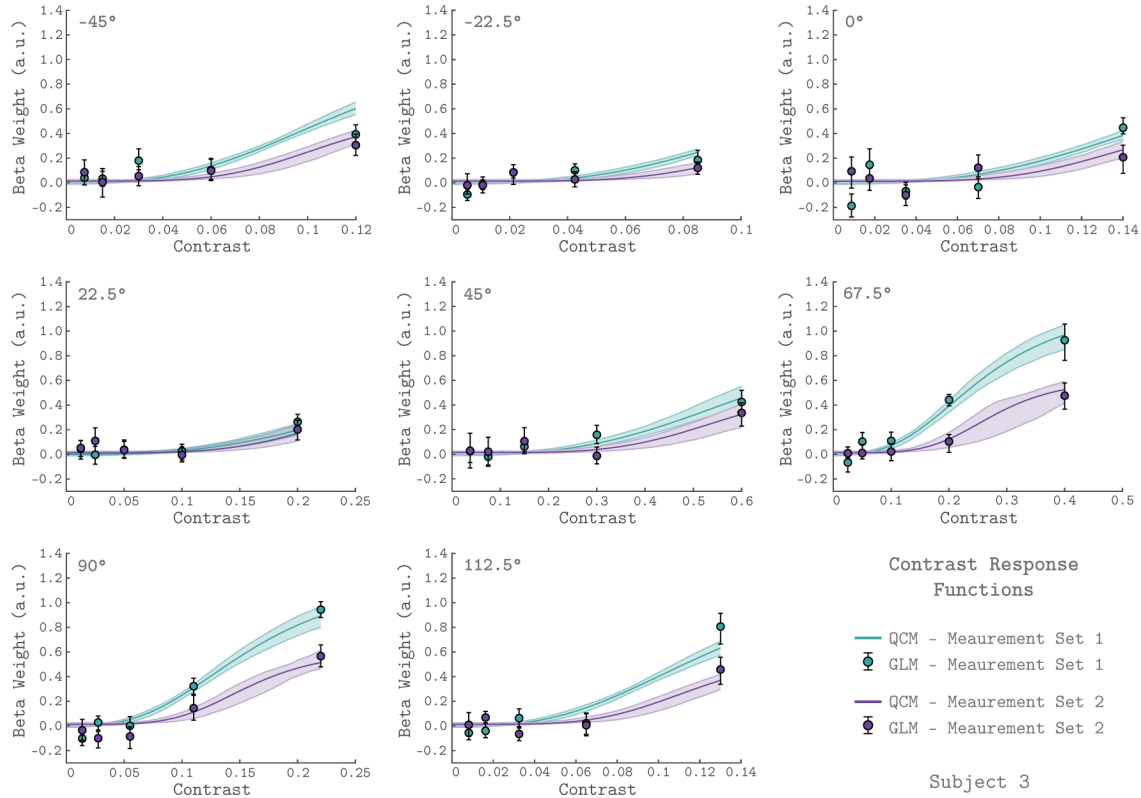
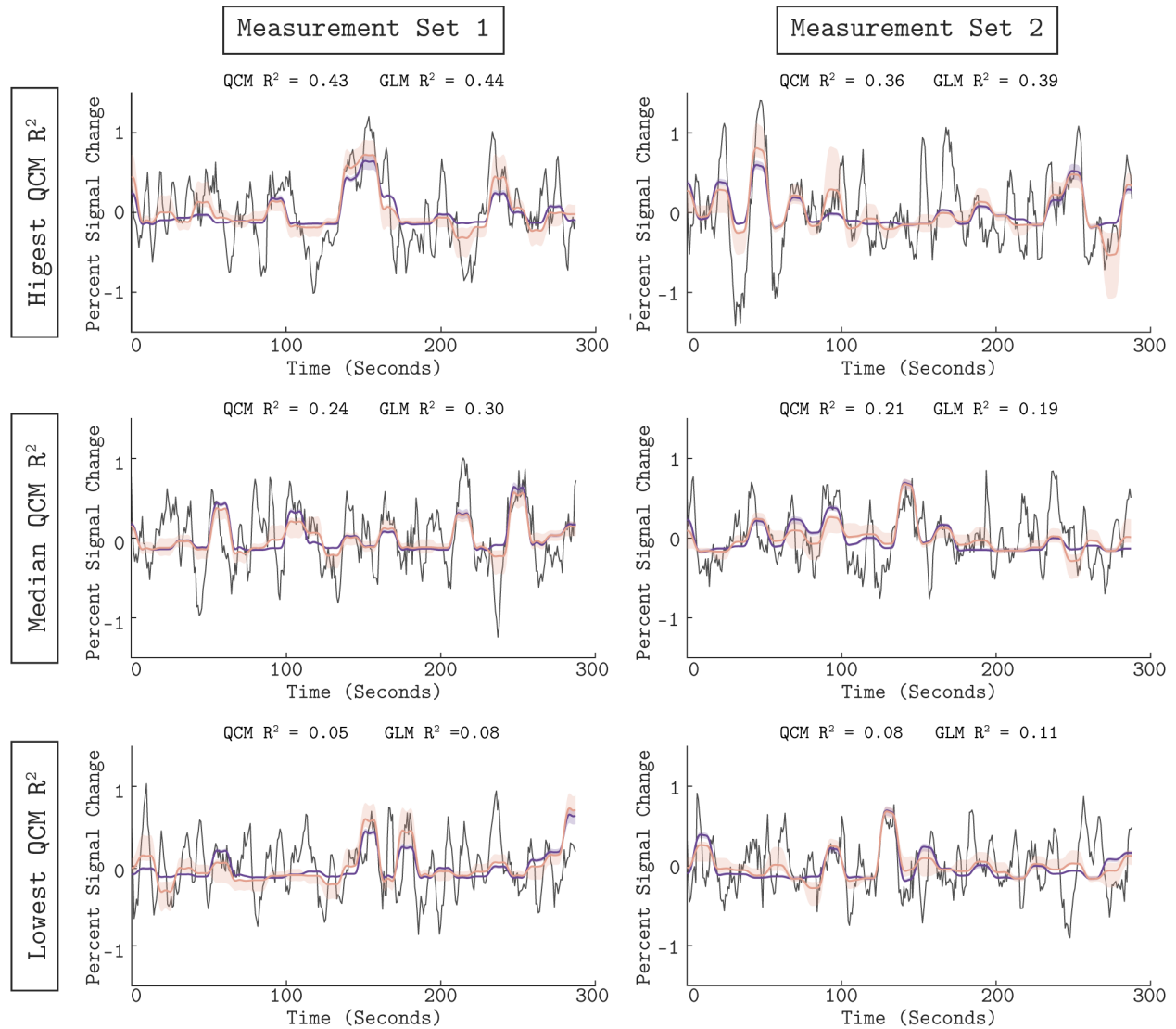


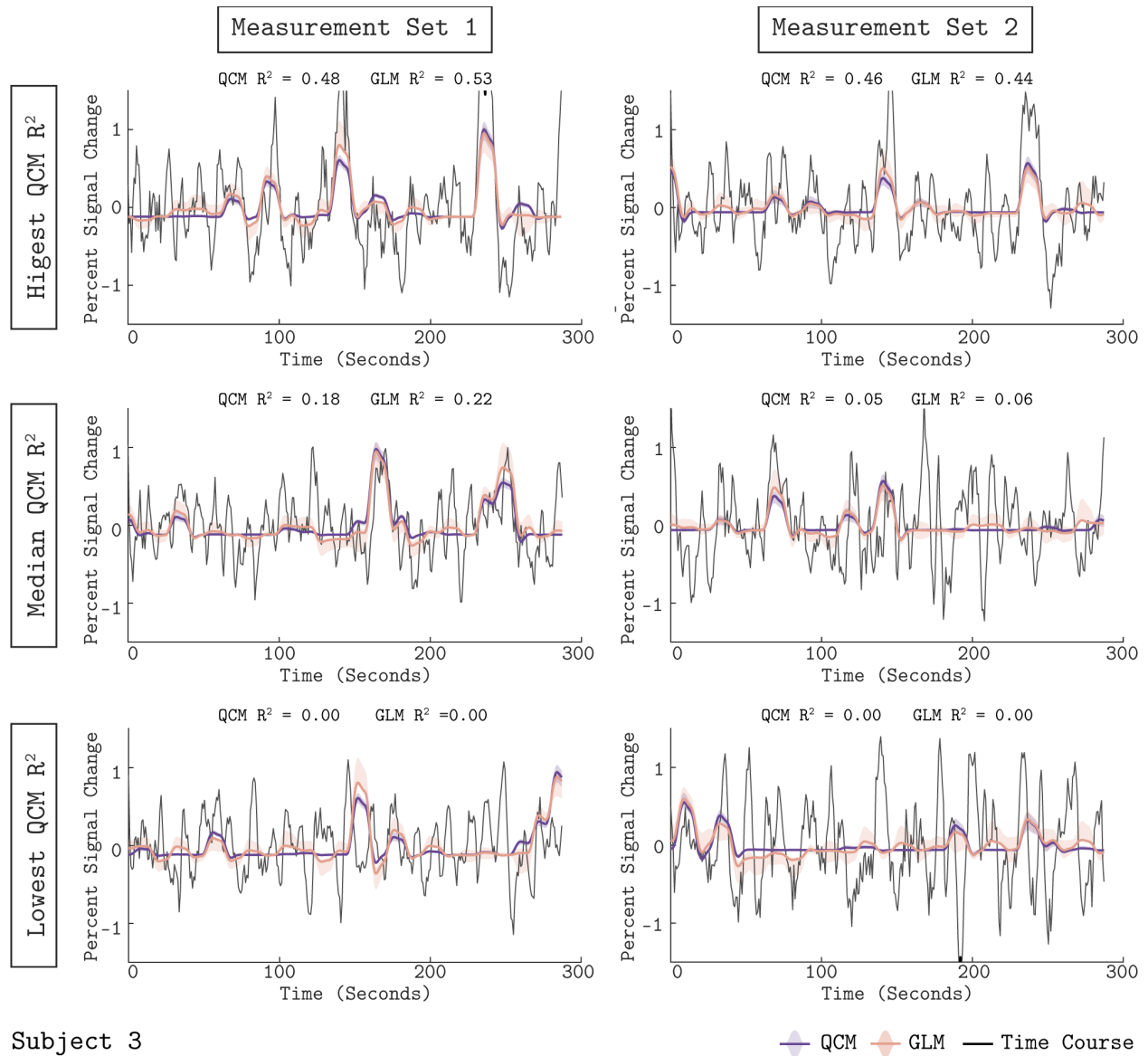
Figure S2: V1 contrast response functions for the eight measured chromatic directions from Subject 3. The format of the figure is the same as Figure 2 in the main text and Figure S1.



Subject 1

— QCM — GLM — Time Course

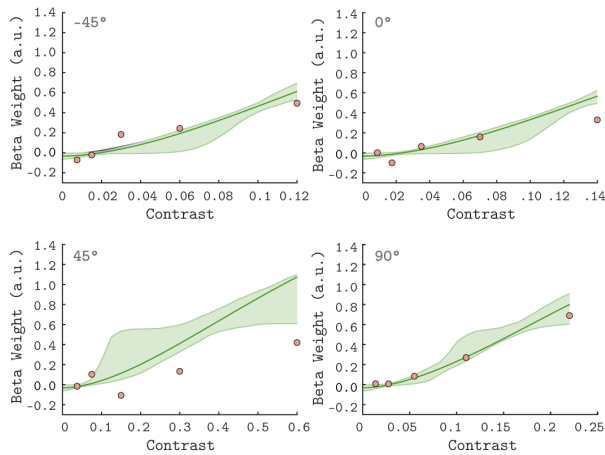
Figure S3: Model predictions of the V1 BOLD time course from Subject 1. The format of the Figure is the same as Figure 3 in the main text. The measured BOLD time course (black line) is shown along with the model outputs from the QCM (thick purple line) and GLM (thin orange line) for 6 acquisitions. The left column shows data and predictions from measurement set 1 and the right column for measurement set 2. The three acquisitions presented for each measurement set were chosen to correspond to the highest, median, and lowest QCM R² values within the respective measurement set. The R² values for the QCM and the GLM are displayed at the top of each panel. The shaded regions represent the 68% confidence intervals obtained via the bootstrap analysis.



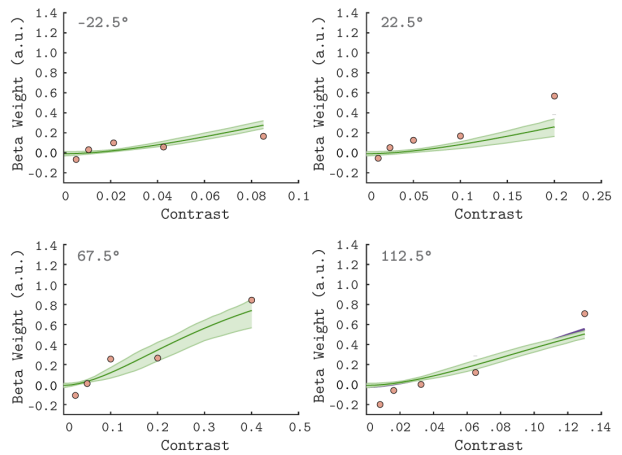
Subject 3

Figure S4: Model predictions of the V1 BOLD time course from Subject 3. The format of the figure is the same as Figure 3 in the main text and Figure S3. The measured BOLD time course (black line) is shown along with the model outputs from the QCM (thick purple line) and GLM (thin orange line) for 6 acquisitions.

Fit to Session 2



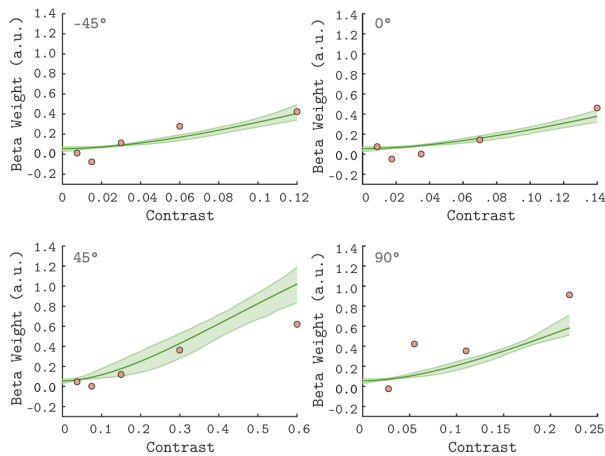
Fit to Session 1



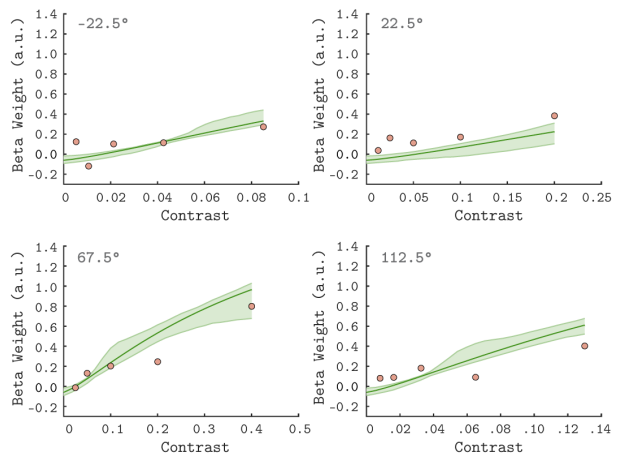
Subject 1: Measurement Set One

● GLM Fit to Full Time Course ■ Cross-Validated CRF Predictions

Fit to Session 2



Fit to Session 1

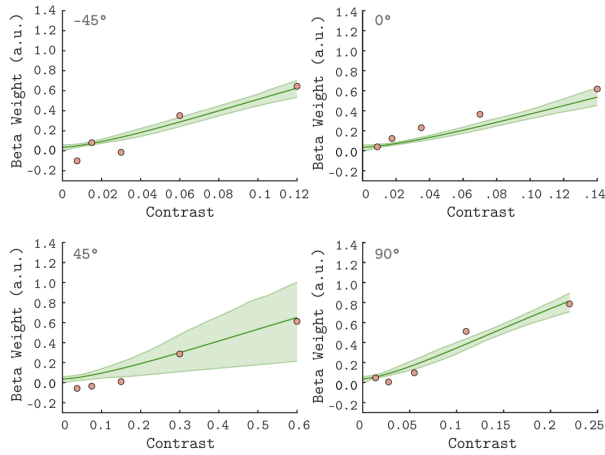


Subject 1: Measurement Set Two

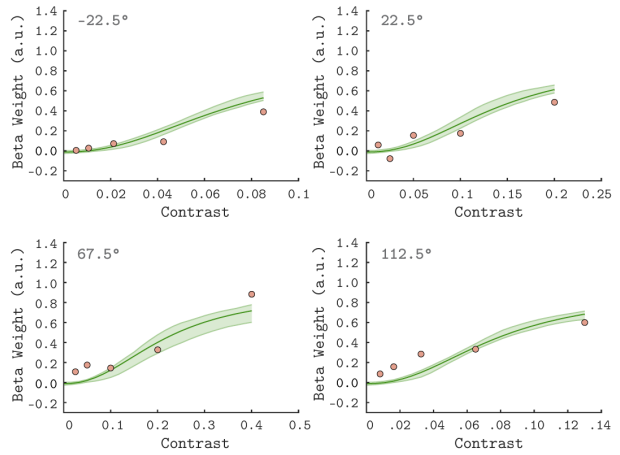
● GLM Fit to Full Time Course ■ Cross-Validated CRF Predictions

Figure S5: Leave-Sessions-Out Cross Validation for Subject 1. The format of the Figure is the same as Figure 5 in the main text. The contrast response functions in each panel (green lines) are the result of a leave-sessions-out cross-validation to test the generalizability of the QCM. In both the top and bottom eight panels, the QCM was fit to data from four of the eight tested chromatic directions, either from session 1 or session 2. The fits were used to predict the CRFs for the held-out chromatic directions. The orange points in each panel are the GLM fits to the full data set. The data shown here are for Subject 1 with the top eight panels from measurement set 1 and the bottom eight panels from measurement set 2. The shaded green error regions represent the 68% confidence intervals for the QCM predictions obtained via the bootstrap analysis.

Fit to Session 2



Fit to Session 1

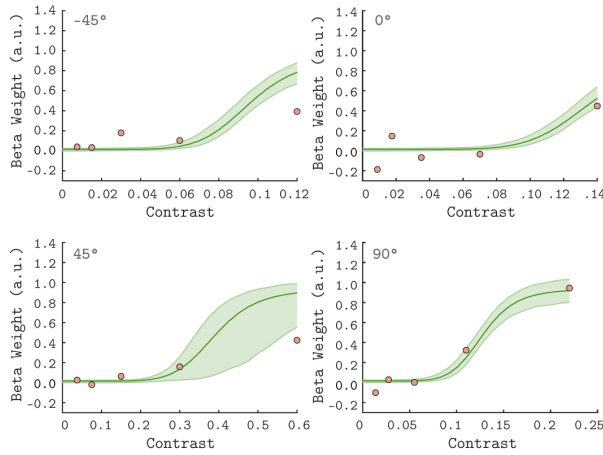


Subject 2: Measurement Set Two

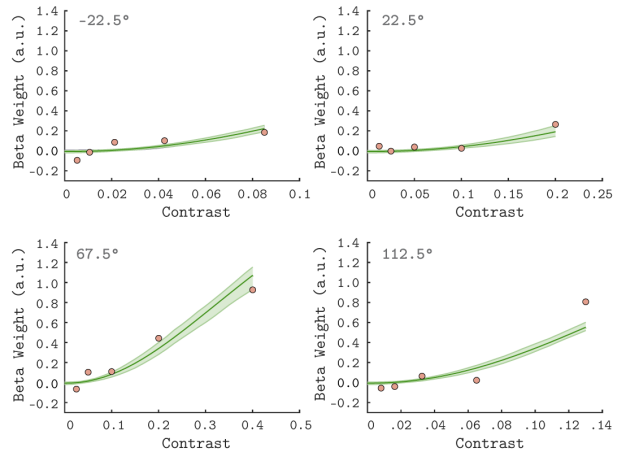
● GLM Fit to Full Time Course ■ Cross-Validated CRF Predictions

Figure S6: Leave-Sessions-Out Cross Validation for Subject 2. The format of the figure is the same as Figure 5 in the main text and Figure S5. The contrast response functions in each panel (green lines) are the result of a leave-sessions-out cross-validation to test the generalizability of the QCM. The orange points in each panel are the GLM fits to the full data set. The data shown here are for Subject 2 measurement set 2; Measurement set 1 can be seen in figure 6 of the main text. The shaded green error regions represent the 68% confidence intervals for the QCM predictions obtained via the bootstrap analysis.

Fit to Session 2



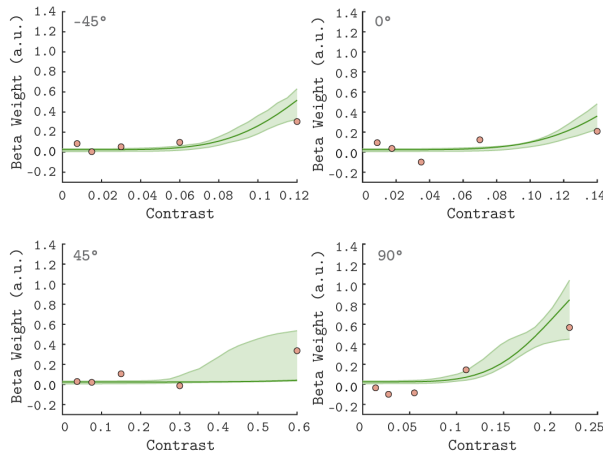
Fit to Session 1



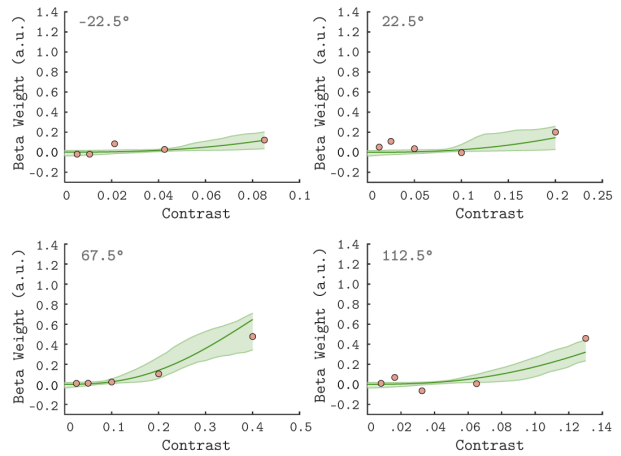
Subject 3: Measurement Set One

● GLM Fit to Full Time Course ■ Cross-Validated CRF Predictions

Fit to Session 2



Fit to Session 1



Subject 3: Measurement Set Two

● GLM Fit to Full Time Course ■ Cross-Validated CRF Predictions

Figure S7: Leave-Sessions-Out Cross Validation for Subject 3. The format of the figure is the same as Figure 5 in the main text and Figures S5 and S6. The green lines are the leave-session-out CRF, and the orange points are the GLM fits to the full data set. The data shown here are for Subject 3 with the top eight panels from measurement set 1 and the bottom eight panels from measurement set 2. The shaded green error regions represent the 68% confidence intervals for the QCM predictions obtained via the bootstrap analysis.

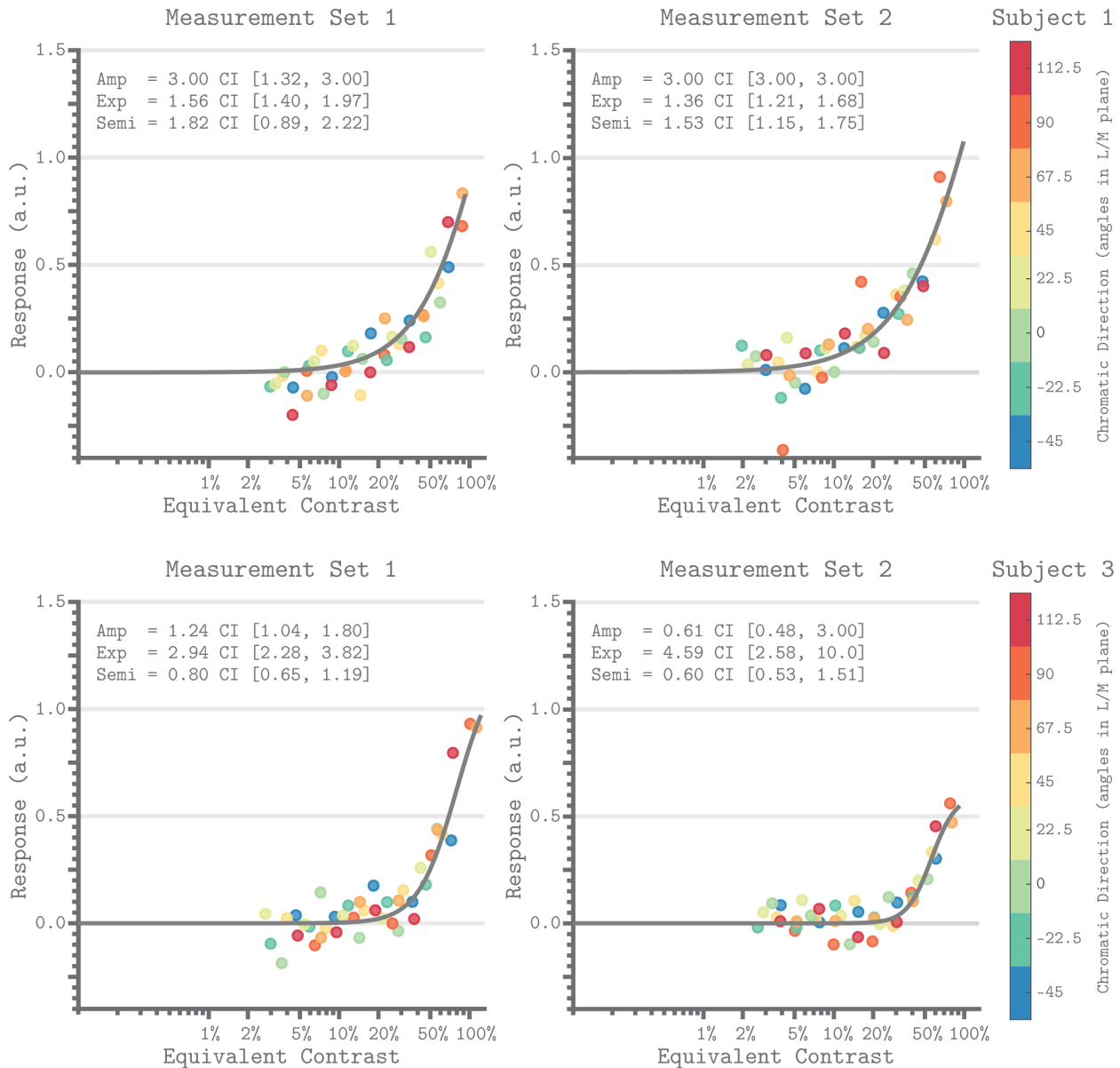


Figure S8: Equivalent Contrast Non-Linearities of the QCM for V1. The format is the same as Figure 7 in the main text. The x-axis of each panel marks the equivalent contrast and the y-axis is the response. The gray curve in each panel is the Naka-Rushton function obtained using the QCM fit. The upper two panels are from Subject 1 and the bottom two panels are from Subject 3. The left panels are for Measurement Set 1 and the right panels are for Measurement Set 2. The parameters of the Naka-Rushton function are reported in upper left of each panel along with the 68% confidence intervals obtained via the bootstrap analysis. The points in each panel are the GLM beta weights of the respective measurement set mapped via the QCM isoreponse contours onto the equivalent contrast axis (see Methods). The color of each point denotes the chromatic direction of the stimuli, as shown in the color bar.

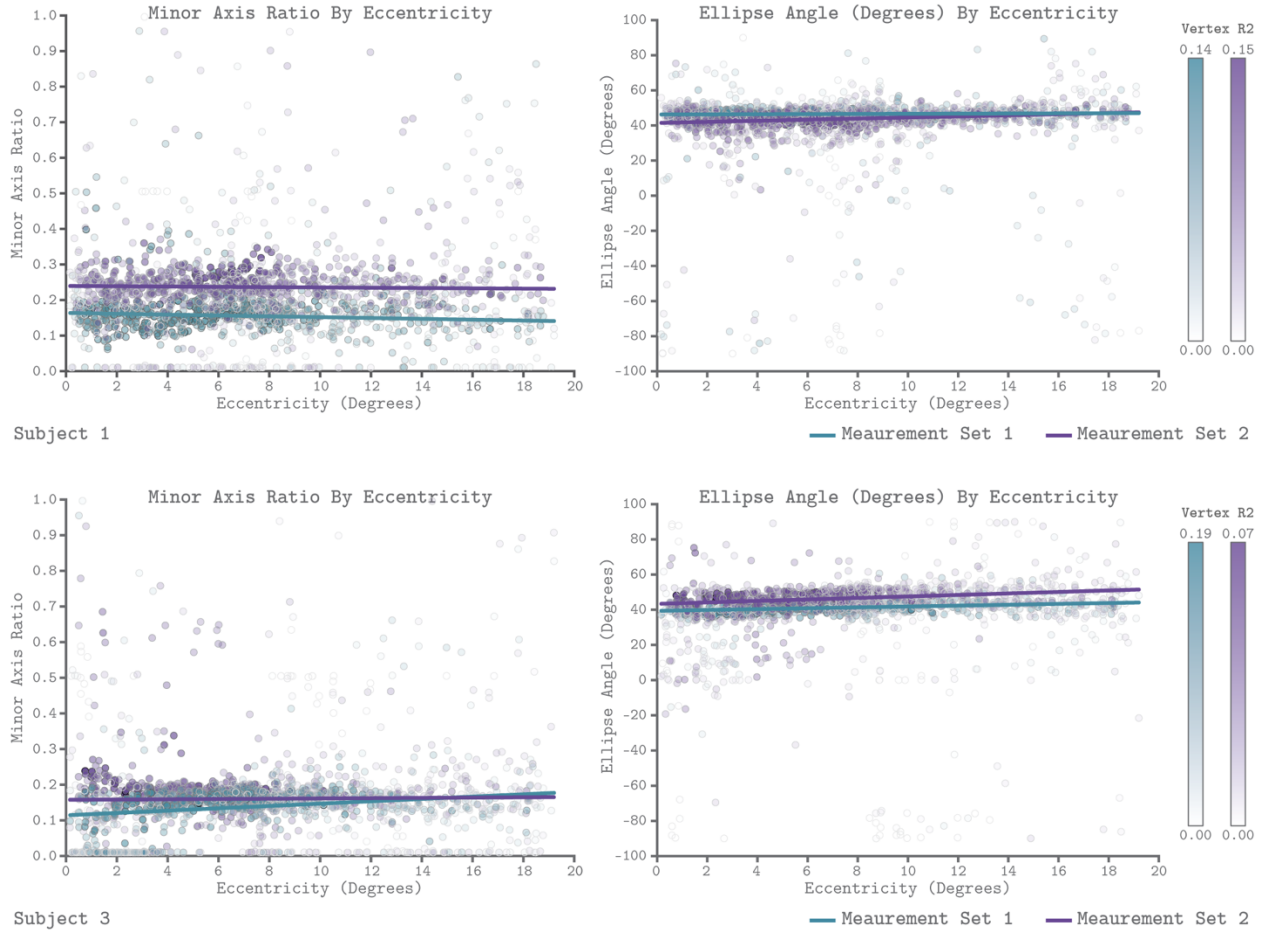


Figure S9: QCM Parameters as a Function of Eccentricity. The format is the same as Figure 9 in the main text. The top row shows parameter fits from subject 1 and the bottom row shows fits from subject 3. The left and right panels show scatter plots of the minor axis ratio and ellipse angle plotted against their visual field eccentricity, respectively. Each point in the scatter plot shows a parameter value and corresponding eccentricity from an individual vertex. Teal indicates measurement set one and purple indicates measurement set two. The lines in each panel are robust regression obtained for each measurement set separately. The transparency of each point provides the R^2 value of the QCM at that vertex. The color bars provide the R^2 scale

Direction	-45°	-22.5°	0°	22.5°	45°	67.5°	90°	112.5°
L-Contrast	8.49%	7.85%	14%	18.48%	42.43%	15.31%	0%	4.98%
M-Contrast	8.49%	3.25%	0%	7.65%	42.43%	36.96%	22%	12.01%
S-Contrast	0%	0%	0%	0%	0%	0%	0%	0%
Total Contrast	12%	8.5%	14%	20%	60%	40%	22%	13%

Table S1: Table of the nominal maximum contrast per direction. The top row indicates the chromatic direction in the LM plane. The L, M, and S contrast rows show the desired contrast on the L, M, and S cones respectively. The total contrast is the vector length of stimuli made up of the L, M, and S cone contrast components and is the definition of contrast used in this study,

Subject 1 – Measurement Set 1								
Nominal Angle	-45°	-22.5°	0°	22.5°	45°	67.5°	90°	112.5°
Center Angle	-41.23 ±3.13	-15.90 ±6.59	2.17 ±1.05	23.43 ±0.23	45.21 ±0.23	69.36 ±1.61	87.98 ±1.26	120.94 ±8.45
Periphery Angle	-42.85 ±3.04	-16.31 ±6.18	1.61 ±0.44	22.75 ±0.22	44.78 ±0.22	68.13 ±1.54	88.72 ±0.18	119.67 ±8.04
Nominal Contrast	12%	8.5%	14%	20%	60%	40%	22%	13%
Center Contrast	12.14 ±0.05	9.02 ±0.75	14.44 ±0.37	21.05 ±0.79	60.92 ±0.09	38.01 ±1.97	21.39 ±0.85	12.56 ±0.38
Periphery Contrast	12.00 ±0.04	8.93 ±0.72	13.98 ±0.35	20.28 ±0.73	58.73 ±0.09	37.81 ±1.89	21.42 ±0.55	12.48 ±0.36
Subject 1 - Measurement Set 2								
Nominal Angle	-45°	-22.5°	0°	22.5°	45°	67.5°	90°	112.5°
Center Angle	-45.09 ±0.55	-22.44 ±0.98	3.49 ±2.27	22.97 ±0.15	45.18 ±0.03	67.75 ±0.24	87.81 ±1.69	112.99 ±1.03
Periphery Angle	-46.16 ±0.55	-22.32 ±0.99	3.24 ±2.77	22.39 ±0.19	44.92 ±0.02	66.85 ±0.21	87.33 ±1.24	68.34 ±0.92
Nominal Contrast	12%	8.5%	14%	20%	60%	40%	22%	13%
Center Contrast	11.75 ±0.01	8.28 ±0.08	13.78 ±0.09	20.35 ±0.22	60.26 ±0.48	37.62 ±0.11	21.82 ±0.08	12.69 ±0.05
Periphery Contrast	11.65 ±0.02	8.29 ±0.08	13.53 ±0.09	19.79 ±0.18	58.47 ±0.48	38.16 ±0.10	21.99 ±0.10	12.81 ±0.06

Table S2: Stimulus Validation Measurements for Subject 1. The top set of rows show data for measurement set one and the bottom set of the show data for measurement set 2. The dark gray rows show the nominal angle and contrast. Each cell shows the mean and standard deviation of stimulus vector angles and lengths computed from 10 validation measurements (5 pre-experiment, 5 post-experiment). Center and periphery denote which set of cone fundamentals were used to calculate cone contrast of the stimuli referring either the 2° or 15° CIE fundamentals, respectively.

Subject 2 - Measurement Set 1								
Nominal Angle	-45°	-22.5°	0°	22.5°	45°	67.5°	90°	112.5°
Center Angle	-45.73 ±1.06	-19.23 ±2.51	1.71 ±0.98	24.04 ±0.39	45.43 ±0.09	68.36 ±0.53	87.87 ±1.64	114.92 ±1.90
Periphery Angle	-47.03 ±1.02	-18.91 ±2.40	1.63 ±0.77	23.65 ±0.38	44.99 ±0.09	67.18 ±0.52	87.65 ±1.09	114.11 ±1.86
Nominal Contrast	12%	8.5%	14%	20%	60%	40%	22%	13%
Center Contrast	12.04 ±0.11	8.41 ±0.21	14.01 ±0.08	20.45 ±0.52	60.72 ±0.38	39.68 ±0.63	21.82 ±0.23	12.73 ±0.16
Periphery Contrast	11.88 ±0.11	8.36 ±.21	13.58 ±0.07	19.81 ±0.51	58.56 ±0.35	39.41 ±0.59	21.82 ±0.24	12.62 ±0.14
Subject 2 - Measurement Set 2								
Nominal Angle	-45°	-22.5°	0°	22.5°	45°	67.5°	90°	112.5°
Center Angle	X	-25.85 ±3.20	X	22.72 ±0.38	X	67.42 ±0.16	X	112.03 ±1.22
Periphery Angle	X	-26.43 ±3.04	X	22.35 ±0.35	X	66.36 ±0.16	X	110.12 ±1.17
Nominal Contrast	12%	8.5%	14%	20%	60%	40%	22%	13%
Center Contrast	X	8.36 ±0.16	X	19.77 ±0.23	X	39.75 ±0.13	X	12.75 ±0.15
Periphery Contrast	X	8.34 ±0.17	X	19.21 ±0.23	X	40.04 ±0.15	X	12.95 ±0.13

Table S3: Stimulus Validation Measurements for Subject 2. The format of this figure is the same as table S2. Cells that contain an "X" mark stimulus directions in which validation measurements were not recorded due to technical difficulty.

Subject 3 - Measurement Set 1								
Nominal Angle	-45°	-22.5°	0°	22.5°	45°	67.5°	90°	112.5°
Center Angle	-48.84 ±5.02	-27.84 ±6.02	5.29 ±4.45	23.61 ±0.77	45.41 ±0.15	67.48 ±0.42	85.96 ±3.11	108.56 ±4.89
Periphery Angle	-50.40 ± 4.90	-28.48 ±5.97	5.09 ±4.72	23.26 ±0.77	45.02 ±0.13	66.33 ±0.43	86.12 ±3.24	107.49 ±4.78
Nominal Contrast	12%	8.5%	14%	20%	60%	40%	22%	13%
Center Contrast	12.25 ±0.32	8.39 ±0.06	13.96 ±0.08	19.78 ±0.20	61.92 ±1.40	40.87 ±1.14	22.91 ±1.30	13.53 ±0.75
Periphery Contrast	12.13 ±0.31	8.30 ±0.08	13.52 ±0.09	19.17 ±0.21	59.76 ±1.36	40.65 ±1.13	22.97 ±1.26	13.47 ±0.71
Subject 3 - Measurement Set 2								
Nominal Angle	-45°	-22.5°	0°	22.5°	45°	67.5°	90°	112.5°
Center Angle	X	-24.51 ±1.57	X	22.92 ±0.07	X	67.65 ±0.19	X	111.23 ±1.11
Periphery Angle	X	-24.17 ±1.53	X	22.65 ±0.06	X	66.57 ±0.19	X	69.95 ±1.07
Nominal Contrast	12%	8.5%	14%	20%	60%	40%	22%	13%
Center Contrast	X	8.24 ±0.07	X	19.93 ±0.09	X	39.77 ±0.27	X	12.88 ±0.11
Periphery Contrast	X	8.23 ±0.07	X	19.45 ±0.26	X	40.16 ±0.26	X	12.92 ±0.10

Table S4: Stimulus Validation Measurements for Subject 3. The format of this figure is the same as table S2. Cells that contain an "X" mark stimulus directions in which validation measurements were not recorded due to technical difficulty.

Subject 1 – Measurement Set 2: Session 1										
Run Number	1	2	3	4	5	6	7	8	9	10
Number of Censored Frames (n/360)	0	0	8	18	0	26	47	4	0	0
Subject 1 – Measurement Set 2: Session 2										
Run Number	1	2	3	4	5	6	7	8	9	10
Number of Censored Frames (n/360)	0	0	0	0	0	0	0	7	0	0

Table S5: Number of Censored fMRI frames per Run. Values shown are for Subject 2 measurement set 2. The top set of rows show data for session one and the bottom set of the show data for session 2. Each set of rows show the number of censored frames per run out of 360 frames. Subjects and sessions not shown mean that no frames were censored in those runs.

Model Appendix

General Linear Model

The model used to provide a benchmark for the QCM is the general linear model (GLM). The GLM has the form:

$$Y = X\beta + \epsilon$$

This states that the measurement (Y) is equal to the model matrix (X) times the weights (β) plus the residual error (ϵ). For our GLM, Y is a column vector that is the concatenated time series from all the fMRI runs within a measurement set (20 runs):

$$Y = \begin{bmatrix} y_1 \\ \vdots \\ y_i \\ \vdots \\ y_t \end{bmatrix}$$

The subscript i indicates a particular time point, with the subscript t being the total number of time points in a measurement set. Here a time point corresponds to one TR of the BOLD response, and $t = 7200$ (20 runs with 360 TRs). Our model comparison was for the aggregated V1 response, and we took each element y_i of Y to be the median BOLD fMRI response for the corresponding TR, with the median taken across the voxels in the V1 ROI.

The model matrix X contains the predictor variables for the linear model. Each column of X is a regressor corresponding to a single stimulus (chromatic direction/contrast pair or the baseline 0 contrast uniform field). The regressors are created by convolving a binary indicator vector with the hemodynamic response function (HRF) that accounts for the sluggish BOLD response to a stimulus event. The binary indicator vectors contain 1 when the stimulus was present and 0 otherwise. The convolution then produces a predictor of the measured BOLD fMRI response for that stimulus condition. In our study, X has 41 columns corresponding to the pairing of the eight chromatic directions and five contrasts levels plus the baseline

$$X = \begin{bmatrix} x_{1,1} & \dots & x_{1,41} \\ \vdots & & \vdots \\ x_{i,1} & \dots & x_{i,41} \\ \vdots & & \vdots \\ x_{t,1} & \dots & x_{t,41} \end{bmatrix}$$

The general linear model predicts Y as a weighted linear combination of the regressors in the columns of X . The weight applied to each regressor is given by the elements of β :

$$\beta = \begin{bmatrix} \beta_1 \\ \beta_2 \\ \vdots \\ \beta_{41} \end{bmatrix}$$

Using β and X , we can generate a predicted time course \hat{Y} . We take each β_i to be a proxy for the aggregate V1 BOLD fMRI response for the corresponding stimulus condition. This interpretation is associated with our particular choice of scaling the indicator variables in the regressors before convolution with the HRF (that is the choice of 1 for the TRs during which the stimulus was present). We determined β using linear regression as implemented in the MATLAB `mldivide` operation, $\beta = X \backslash Y$ (see <https://www.mathworks.com/help/matlab/ref/mldivide.html>). The GLM prediction of the BOLD fMRI response at each time point y_i is therefore:

$$\hat{y}_i = x_{(i,1)}\beta_1 + x_{(i,2)}\beta_2 + \dots + x_{(i,41)}\beta_{41}$$

Quadratic Color Model

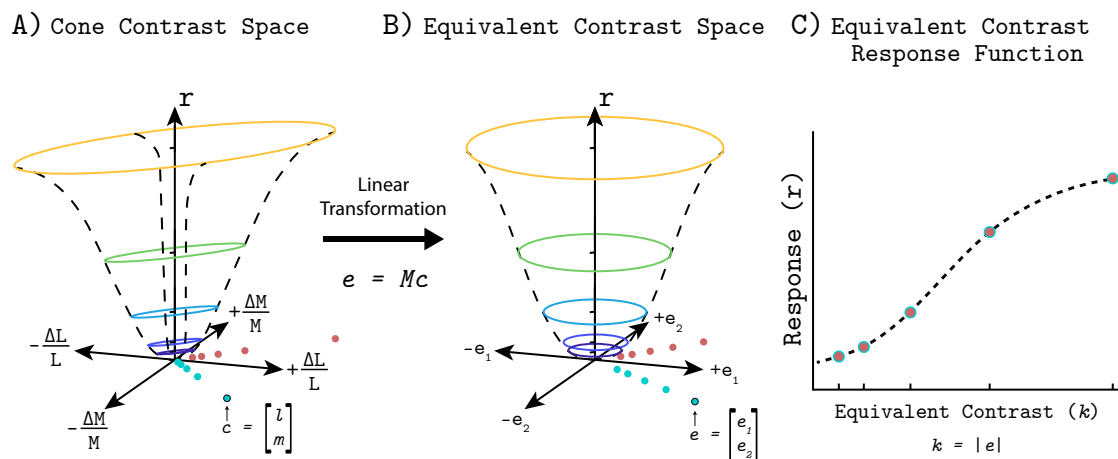
The quadratic color model (QCM) allows for the prediction of the BOLD fMRI response to any stimulus that lies in the LM contrast plane. This includes predictions for stimuli not in the measurement set used to fit the model. The QCM makes its predictions through three steps. The first step calculates the “equivalent contrast” of the stimulus which can be thought of as the effective contrast of the stimulus in V1 accounting for the differences in sensitivity across chromatic directions. Equivalent contrast is the vector length of the stimuli after this linear transformation. The next step is a response non-linearity applied to the equivalent contrast to predict the underlying neural response. Finally, a convolution of this underlying response with the HRF results in predictions of the BOLD fMRI response. Here, we provide explanations and equations for the model.

We start by considering a stimulus modulation whose predicted BOLD fMRI response we wish to know. A stimulus modulation is denoted by the column vector c whose two entries are the L and the M cone contrast of the stimulus (l and m respectively):

$$c = \begin{bmatrix} l \\ m \end{bmatrix}$$

The figure below outlines how we transform such a stimulus to a response prior to convolution with the HRF. Panel A shows a 3-dimensional contrast-response space with the (x,y) plane representing the LM contrast plane and the z axis giving the response r corresponding to each point in the LM contrast plane. In this representation, all possible stimuli and responses form an inverted bell shape surface, as illustrated below. At constant values of r (constant height on the z axis), cross sections through this surface shows the elliptical isoresponse contours of the QCM. Each elliptical isoresponse contour describes the set of LM contrast combinations that elicit the same response r . The teal and red dots shown in the LM plane represent example stimulus modulations, chosen in two color directions at contrasts corresponding to the five (dark blue, blue, aqua, green, yellow) isoresponse contours illustrated.

To obtain the equivalent contrast corresponding to stimulus c , we first apply a linear transformation M to c to obtain a transformed representation of the stimulus, $e = Mc$. The vector e is a two-dimensional column vector whose entries we refer to as e_1 and e_2 . We call the transformed representation of the stimulus the equivalent contrast space, and as we show below we choose the linear transformation M such that in this space the isoresponse contours are circles. Panel B of the figure shows the same information as in Panel A represented in the equivalent contrast space. Here the (x,y) plane gives the values of e_1 and e_2 , and the isoresponse contours plotted with respect to the equivalent contrast plane are circular. Note that in the equivalent contrast plane, the distances between the plotted teal points are the same as the distances between the corresponding plotted red points. This is a consequence of the fact that the transformation M is chosen to make the isoresponse contours circular.



We define the equivalent contrast k of a stimulus as the vector length of the transformed stimulus e , $k = |e|$.

The next step of the model is a non-linearity that maps between equivalent contrast (k) and BOLD fMRI response (dashed black line). This is possible since all stimuli in equivalent contrast space with the same equivalent contrast predict the same underlying response, regardless of the chromatic direction of the stimuli. Therefore, we can focus solely on the relationship between equivalent contrast and the associated response. This is illustrated by Panel C. We call the static non-linearity the “equivalent contrast-response function”. The teal and red closed circles shown in Panel C correspond to both the teal and red points shown in Panels A and B, and these overlap since they lie on the same set of isoresponse contours.

The linear transformation M needed to compute the equivalent contrast representation of c is derived by starting with the equation for an ellipse centered at the origin, in which a positive-definite quadratic function of the cone contrasts is equal to a constant for all points on the ellipse. This equation is given below (left hand side) and re-expressed in matrix-vector form (right hand side).

$$k^2 = Al^2 + Blm + Cm^2 = \begin{bmatrix} l & m \end{bmatrix} \begin{bmatrix} A & B/2 \\ B/2 & C \end{bmatrix} \begin{bmatrix} l \\ m \end{bmatrix}$$

Changing the value of the constant k^2 changes the scale of the ellipse without changing its shape, and as we will see below k is the equivalent contrast corresponding to each constant-shape elliptical isoresponse contour. We rewrite the matrix representation of the elliptical locus as:

$$k^2 = c^T Q c$$

This yields

$$k = \sqrt{c^T Q c}$$

Because the coefficients A , B , and C are constrained so that Q is a symmetric positive definite matrix, Q can be factored through its eigenvalue decomposition and rewritten as

$$Q = V \Lambda V^T$$

where V is an orthonormal (rotation) matrix and Λ is a diagonal matrix with positive entries. Since Λ is a diagonal matrix we can further decompose as

$$Q = V S S^T V^T$$

where S is diagonal with entries equal to the square root of the corresponding entries of Λ .

The matrix V expresses a rotation in the cone contrast plane and may be parameterized by the rotation angle p_1 :

$$V(p_1) = \begin{bmatrix} \cos(p_1) & -\sin(p_1) \\ \sin(p_1) & \cos(p_1) \end{bmatrix}$$

The matrix S is diagonal and when applied to a vector simply scales the entries of that vector. Although S normally has two degrees of freedom in the general case, we lock the scale of the major axis to 1. Therefore we are only concerned with the scaling of the minor axis (p_2). Thus we can define

$$S(p_2) = \begin{bmatrix} 1 & 0 \\ 0 & 1/p_2 \end{bmatrix}, 0 > p_2 \leq 1$$

In this formulation, p_1 and p_2 parameterize the shape of an elliptical isoresponse contour and k parameterizes its scale. The parameter p_1 is what we call the angle of the major axis in the main text, while p_2 is the minor axis ratio.

We set $M = S^T V^T$ and rewrite Q as:

$$Q = M^T M$$

The matrix M then transforms the cone contrast vector c to the equivalent contrast vector through $e = Mc$. Recall that equivalent contrast is the vector length of e . Therefore, the equivalent contrast of the points on the ellipse corresponding to k is given by

$$\|e\| = k$$

To see this, note that

$$\|e\|^2 = e^T e = c^T M^T M c = c^T Q c = k^2$$

Thus, given Q , we can compute the equivalent contrast for any stimulus c and apply the equivalent contrast-response function to predict its response. The specific non-linearity we use for the contrast-response function is a Naka-Rushton function. This function is a four parameter saturating non-linearity that is defined by the following:

$$r(k) = a \frac{k^n}{k^n + s^n} + h$$

The neural response n is a function of the equivalent contrast (k). The parameters of the Naka-Rushton function are the amplitude (a), exponent (n), semi-saturation (s), and the offset (h). These parameters control the gain, the slope, the position along the x axis, and the y-axis offset of the non-linearity, respectively. The shape of the non-linearity controls how the underlying response changes with equivalent contrast.

Finally, we need to convert the neural response (r) to a prediction of the BOLD fMRI response (\hat{Y}). To do this, we convolve the underlying response with the hemodynamic response function (HRF).

$$\hat{Y} = r \circledast HRF$$

Predictions of the BOLD fMRI response via the QCM are thus made using 6 parameters: angle (p_1), minor axis ratio (p_2), amplitude ($p_3 = a$), exponent ($p_4 = n$), semi-saturation ($p_5 = s$), and offset ($p_6 = h$). We can define a parameter vector P for the QCM as:

$$P = \begin{bmatrix} p_1 \\ \vdots \\ p_6 \end{bmatrix}$$

We fit P to the data by using a non-linear parameter search routine `fmincon` (Matlab, see <https://www.mathworks.com/help/optim/ug/fmincon.html>) to find the parameter vector that minimizes the difference between the measured BOLD fMRI time course Y and the prediction \hat{Y} obtained using the QCM. This takes the form of:

$$P^* = \arg \min_P \sqrt{\frac{\sum_{i=1}^t (\hat{y}_i - y_i)^2}{t}}$$

where the objective function we are minimizing is the root mean squared error. Once the values of P are found for an individual subject, we can use them to predict the BOLD fMRI response to any c within the LM cone contrast plane.