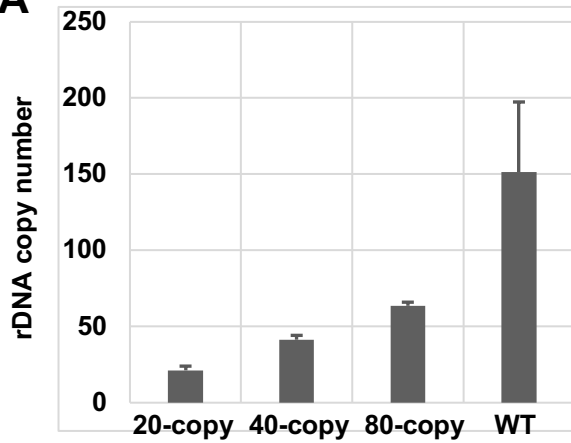
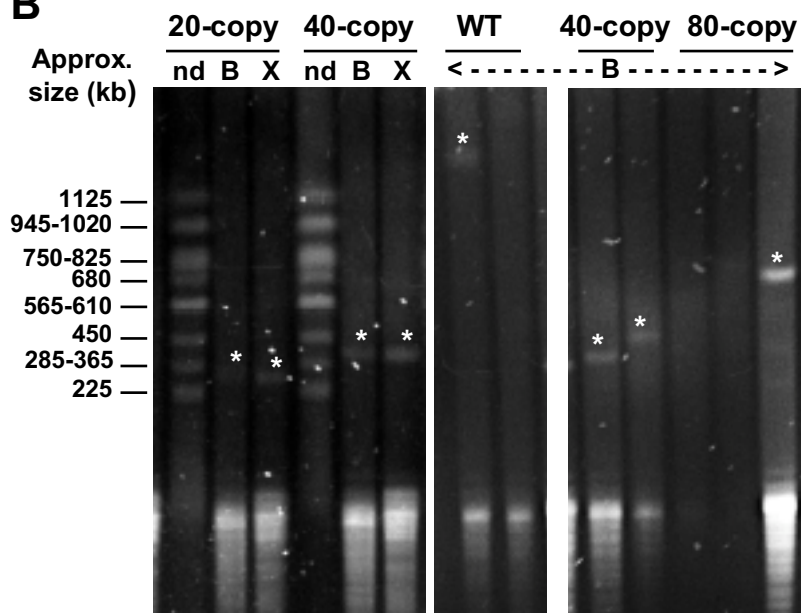
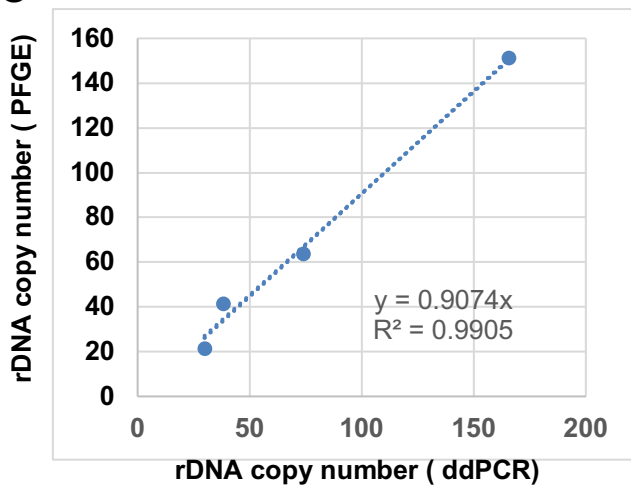


A

Strain	20-copy	40-copy	80-copy	WT
rDNA copy number	21.23	41.36	63.61	151.33
SD	2.77	2.84	2.37	46.09

B**C**

Supplementary Figure 5. rDNA copy number measurement by droplet digital PCR (ddPCR) and pulsed field gel electrophoresis (PFGE). (A) ddPCR estimates of rDNA copy number for the indicated laboratory strains using at least three independent biological replicates. Mean values and standard deviations (SD) are given in the table below. (B) Ethidium bromide-stained PFG showing two independent experiments detecting the undigested chromosome profile (nd) and the rDNA array (white stars) for the indicated strains. Entire rDNA arrays are detected after enzymatic restriction with *XhoI* (X) or *BamHI* (B) enzymes that do not cut within the rDNA array. Sizes of undigested *S. cerevisiae* chromosomes were used to evaluate each rDNA array size. (C) Correlation between rDNA copy number evaluated by PFGE and ddPCR for the four strains.