

Heterogeneity of murine periosteum progenitors involved in fracture healing

Brya G Matthews^{1,2}, Sanja Novak², Francesca V Sbrana², Jessica L. Funnell², Ye Cao¹, Emma J. Buckels¹, Danka Grcevic^{3,4}, Ivo Kalajzic²

¹Department of Molecular Medicine and Pathology, University of Auckland, Auckland 1142, New Zealand

²Department of Reconstructive Sciences, UConn Health, Farmington, CT 06030, USA; UConn Health, Farmington, CT, USA;

³Department of Physiology and Immunology, and ⁴Croatian Institute for Brain Research, University of Zagreb, Zagreb 10000, Croatia

Supported by: This work has been supported by Connecticut Stem Cell grant 14-SCA-UHC-02, the Health Research Council of New Zealand Sir Charles Hercus Fellowship, and the American Society for Bone and Mineral Research Rising Star Award to B.G.M; Connecticut Regenerative Medicine Research Fund grant 16-RMB-UHC-10 and NIH/NIAMS grants AR055607 and AR070813 to I.K.

Corresponding author:

Brya G Matthews, Department of Molecular Medicine and Pathology, University of Auckland, Private Bag 92-019, Auckland 1142, New Zealand; brya.matthews@auckland.ac.nz

Abstract

The periosteum is the major source of cells involved in fracture healing. We sought to characterize progenitor cells and their contribution to bone fracture healing. The periosteum is highly enriched for progenitor cells, including Sca1+ cells, CFU-F and label-retaining cells compared to the endosteum and bone marrow. Using lineage tracing, we demonstrate that α SMA identifies long-term, slow-cycling, self-renewing osteochondroprogenitors in the adult periosteum that are functionally important for bone formation during fracture healing. In addition, Col2.3CreER-labeled osteoblast cells contribute around 10% of osteoblasts, but no chondrocytes in fracture calluses. Most periosteal osteochondroprogenitors following fracture, can be targeted by α SMACreER. Previously identified skeletal stem cell populations were common in periosteum, but contained high proportions of mature osteoblasts. We have demonstrated that the periosteum is highly enriched for skeletal progenitor cells and there is heterogeneity in the populations of cells that contribute to mature lineages during periosteal fracture healing.

Keywords: Periosteum, skeletal stem cell, progenitor, alpha smooth muscle actin, osteoblast, fracture, PDGFRa

Introduction

Bone tissue retains the ability to heal and regenerate throughout life. This process relies on tissue-resident stem and progenitor cells capable of generating new matrix. Until recently, most studies focused on the bone marrow compartment as a source of osteoprogenitors, with respect to their contribution to growth and remodeling, and their potential as a source of cells for regenerative applications. In the bone marrow compartment, it is well-established that the endosteal region, as well as regions near trabecular bone surfaces, are highly enriched for stem and progenitor cells, including cells of the mesenchymal or skeletal lineage (1, 2). Skeletal stem cells can be isolated from various bone compartments based on their plastic adherence, however, more recently, numerous markers have been proposed to identify or isolate skeletal progenitors prospectively (3).

The skeleton has different requirements for the functionality of tissue-resident progenitors at different life stages. During development, the majority of the skeleton forms through endochondral ossification via a cartilage template, and this process continues during postnatal life at the growth plates. Hypertrophic chondrocytes can give rise to osteoblasts, particularly those in the primary spongiosa and trabecular region, likely via a progenitor intermediate (4-8). However, this process is growth-related, and skeletal stem cell pools must become established in adult tissues by the completion of growth when the growth plate activity reduces dramatically (as in mice) or fuses completely (in humans). Many stem and progenitor markers have been studied primarily during early life. For example, skeletal progenitors expressing *Gli1*, *Gremlin1*, and *CTGF* are prevalent during development and adolescent growth, but appear to diminish or disappear in mice over one month of age (9-11). Chan and colleagues have reported flow cytometry-based methods for identifying skeletal stem cells (SSC) and downstream bone, cartilage and stromal progenitors (BCSP) as well as various other lineage-restricted populations in mice and humans (12, 13). The murine cell surface antigen combinations were validated only in cells isolated from whole neonatal mouse long bones, but have since been applied to various settings in adult systems including fracture healing (14, 15). Similarly, markers for putative SSCs in humans were identified using fetal tissue, with a focus on the hypertrophic cartilage zone, then applied to adult tissue. Another recent study used similar marker combinations to identify stem cell populations in the periosteum, with the majority of studies performed using very young animals (late embryonic up to P32, many at P6) (16). *PDGFR α* +*Sca1*+ (*P α S*) cells were characterized in adult animals, and Leptin receptor Cre-labeled cells that ultimately give rise to osteoblasts and bone marrow adipocytes do not become established before two months of age (2, 17). These results indicate that stem and progenitor cell populations and markers change

at different life stages, meaning that markers identified in neonates or juveniles may not apply to the adult setting.

The periosteum is the tissue surrounding the outer surface of the bone. It is physically separated from the bone marrow compartment, and appears to have a much greater regenerative capacity, playing a critical role in fracture healing (18, 19). Periosteum-based healing involves a process similar to endochondral ossification. Following an inflammatory phase, the periosteum expands and forms a callus initially comprised of fibrocartilage in the central area, combined with direct bone formation at the periphery. It has been challenging to identify markers that are specific to the periosteum, however recent studies have characterized cathepsin K and periostin as markers that are highly enriched in periosteal mesenchymal cells, and alpha smooth muscle actin (α SMA) was shown to enrich Mx1-labeled periosteal cells for progenitors (16, 20, 21). We have previously shown that α SMA identifies a population of growth-related osteoprogenitors in the trabecular region, and cells that contribute to fracture healing in the adult periosteum (22, 23).

In the current study, we have used murine models to characterize the periosteal progenitor populations. We have demonstrated that α SMACreER identifies a subset of long-term osteochondroprogenitors involved in fracture callus formation. In addition, we have evaluated different bone compartments for the expression of stem/progenitor markers, including cell surface profile, SSC and BCSP populations, and lifespan by label-retention assays in different bone compartments, and evaluated growth potential of different periosteal populations *ex vivo*.

Results

In vivo identification of long-term osteochondroprogenitors

In order to identify murine periosteal progenitor populations in vivo, we initially utilized a lineage tracing approach with a tamoxifen-inducible Cre combined with the Ai9 Tomato reporter. We have demonstrated that α SMA^{CreER} identifies osteoprogenitors in both periosteum and the bone marrow compartment (22-24). Previously, we delivered tamoxifen at the time of fracture, which potentially labels cells that activate α SMA expression at the time of or shortly after fracture (25). In this study, we delivered tamoxifen up to 90 days before fracture to evaluate whether the reporter was identifying long-term progenitor cells. Firstly, we confirmed that α SMA-labeled cells were retained in the periosteum over the experimental time course by both histology (Figure 1A-B) and flow cytometry (Figure 1C). α SMA-labeled cells remained in the periosteum at a similar frequency over the timeframe evaluated, and also remained in the endosteum (Figure 1D). In juvenile mice (4-5 weeks old), we see contribution of α SMA⁺ cells from the bone marrow compartment, particularly in the trabecular region, to osteoblasts and osteocytes after 17 days (Figure 1, figure supplement 1A-B) (23). However, 70 days after tamoxifen delivery, osteoblasts are no longer labeled, but some Tomato⁺ osteocytes remain (Figure 1, figure supplement 1C-F). In contrast, when tamoxifen is delivered to sexually mature mice, there is no contribution to osteoblasts in trabecular bone up to 100 days after tamoxifen (Figure 1, figure supplement 2).

Following tibial fracture, α SMA-labeled cells made substantial contributions to fracture callus osteoblasts and chondrocytes (Figure 1E-I). Very few Tomato⁺ cells were present or contributed to mature cell types in the absence of tamoxifen (Figure 1G-I, figure supplement 3A). Most fracture callus osteoblasts are derived from cells that expressed α SMA at some point in their lineage, with 81.5% derived from α SMA⁺ cells labeled just after fracture. A smaller population of osteoblasts were derived from long-term α SMA-labeled progenitors (around 20%, Figure 1G-H). The contribution of α SMA-labeled cells was similar in both the initial intramembranous bone formation in the day 7 callus, and the more fully mineralized day 14 callus. Contribution to chondrocytes showed a very similar trend based on the timing of tamoxifen, however the proportion of Tomato⁺ chondrocytes was always lower (Figure 1I). Following the pin insertion and fracture, bone formation also occurs inside the marrow compartment, particularly in the proximal diaphysis surrounding the pin over 1mm from the fracture site (Figure 1, figure supplement 3). α SMA-labeled cells labeled at the time of fracture make a major contribution to newly formed osteoblasts in the marrow compartment, however, there was lower contribution at the later time points suggesting that α SMA identifies long-

term injury-responsive osteochondroprogenitors in the periosteum, but does not consistently label long-term injury-responsive cells in the bone marrow compartment.

Putative mesenchymal stem cell markers are enriched in periosteum

We performed further characterization of cell populations in the periosteum, first, to evaluate surface profile using putative mesenchymal or skeletal stem cell markers, and their corresponding growth potential and, second, to characterize α SMA-labeled cell marker expression. There are numerous markers for skeletal stem and progenitor cells reported in the literature, however many have not been evaluated systematically in different tissue compartments. We evaluated the expression of several cell surface markers in periosteum, endosteum and bone marrow of adult mice (Figure 2A, figure supplement 1). All stains included a CD45/CD31/Ter119 cocktail to exclude hematopoietic and endothelial cells and select for mesenchymal lineages (termed CD45- population). We confirmed that the freshly isolated CD45+ population was unable to form CFU-F or any type of colonies in the CFU-F assay. The CD45- population in periosteum was highly enriched for most of the markers evaluated compared to both endosteum and bone marrow (Figure 2A). Sca1, PDGFR α and PDGFR β were abundant in periosteum, but expressed on <2% CD45- endosteal and bone marrow cells. The only marker that did not follow this trend was CD105, which was consistently present on the majority of endosteal and bone marrow CD45- cells. Various marker combinations that have previously been used to identify stem cells such as Sca1/PDGFR α or Sca1/CD51 were easily identifiable in periosteum but very rare in the endosteum or bone marrow (Figure 2, figure supplement 1). The CD45- periosteal population formed around 20x more CFU-F than the CD45- endosteal population, suggesting functional enrichment for stem and progenitor cells (Figure 2B). This is in agreement with Duchamp de Lageneste et al. who used a different method to isolate periosteal cells (20). We went on to evaluate the expansion and differentiation potential of selected periosteal populations independently of α SMA expression using in vitro assays. CFU-F formation was restricted to CD51+ cells, and most enriched in Sca1+ CD51+ cells (Figure 2, supplemental figure 2A). CD90+ cells also showed high CFU-F potential, whereas CD105+ cells, which are almost exclusively CD90-, formed few or no colonies. Sca1+ CD51+ cells showed the ability to differentiate towards osteogenic (ALP+) and adipogenic (Oil Red O+) lineages, in many cases within a single colony (Figure 2, supplemental figure 2B-C). Similar results were obtained for the CD90+ population. Sca1- CD51+ cells and CD90- CD105- cells efficiently activated ALP, but never differentiated into adipocytes. This suggests that in addition to including some mature osteoblasts, these populations contain committed osteoprogenitors that remain capable of density-independent

growth. All these populations contained a small proportion of α SMA-labeled cells, with the highest frequency of α SMA-labeled cells in the CD90+ population (Figure 2, supplemental figure 2D).

We next performed further characterization of α SMA-labeled cells in the absence of injury. By flow cytometry, we confirmed that α SMA+ cells were much more prevalent in periosteum compared to endosteum and bone marrow in adult mice (Figure 2C-D), although they were rarer than the other markers we analyzed. We evaluated expression of various markers in the α SMA+ population. The majority of α SMA-labeled cells in the periosteum and endosteum express CD51 and CD90 (Figure 2E-F). The other markers tested were expressed in smaller subsets of α SMA-labeled cells, indicating there is heterogeneity within the labeled population. We next evaluated whether the prevalence of any of these markers in the α SMA-labeled population changed over time since labeling. We did not detect differences in the level of expression of any of the markers evaluated individually or in various combinations at different times after tamoxifen, suggesting that additional markers may be required to define the heterogeneity and phenotype of these cells (Figure 2G).

To further evaluate heterogeneity, we performed plate-based single cell RNAseq analysis on α SMA-labeled periosteal cells isolated at different time points after tamoxifen administration (Figure 3). We obtained data from 185 cells from 2 days after tamoxifen, 197 cells from 6 weeks and 147 cells from 13 weeks after tamoxifen. The median unique molecular identifier (UMI) number was 697, and the median number of expressed genes was 449 (Figure 3, figure supplement 1). Since expression levels for the majority of genes were low in this study, we restricted our analysis to basic clustering studies. Clustering using the Leiden community detection algorithm generated four clusters from the α SMA-labeled cells, confirming heterogeneity in this population (Figure 3A, figure supplement 2) (26). Clusters 1-3 are similar and appear to represent mainly periosteal populations. Cluster 4 is quite separate from the rest, and appears to be derived from muscle contamination, expressing markers such as skeletal muscle actin, *Acta1*, and myoglobin, *Mb* (Figure 3, figure supplement 2B). We have previously demonstrated that α SMA labels a subset of muscle satellite cells that go on to generate myofibers in both juvenile and adult animals (27). Notably, of the 26 cells in this cluster, only one was from the day 2 chase group, consistent with the differentiation of α SMA+ satellite cells into mature muscle lineage cells over time.

Cluster 3 is characterized by expression of a number of pericyte markers including *Rgs5*, and frequent expression of PDGFR β and α SMA. They also frequently express *Cxcl12*, which is a marker of bone marrow resident reticular cells, and *Fabp4*, which is known as an adipocyte lineage marker

(Figure 3B, figure supplement 2A). Other adipocyte markers like *Adipoq* and *Pparg* were undetectable in most cells. The proportion of cluster 3 cells increased slightly over time suggesting they might represent a population of mature perivascular cells (Figure 3C). Cluster 1 and 2 show some overlap, and cluster 1 had few selective markers, with only the matrix protein gelsolin, *Gsn*, passing our marker criteria. Interestingly, cluster 1 shows the most frequent expression of the genes for *Sca1*, PDGFR α and CD90, suggesting it may contain multipotent stem/progenitor populations (Figure 3D). The proportion of cells in cluster 1 was reduced following longer chase periods, in line with the reduction in α SMA-lineage contribution to fracture healing at later time points. Markers of cluster 2 are primarily matrix genes that can be expressed by the osteoblast lineage including *Col1a2*, *Tnmd*, *Fmod* and *Ogn*. Unpublished studies we performed in parallel with differentiated osteoblasts show consistently high levels of *Bglap* in differentiated osteoblasts, but *Bglap* is absent or present at only low levels in the α SMA-labeled cells indicating that cluster 2 does not represent mature osteoblast lineage cells. It is feasible that at least some of these cells are from the fibrotendonous lineage, as the periosteum contains fascia and fibrous tendon attachments, which appear to be targeted by α SMA histologically. Overall, our data indicate that α SMA+ cells are a fairly rare, but heterogeneous cell population within the periosteum that can be separated into at least three different cell types.

Label-retaining cells in the periosteum are enriched for progenitor markers

One feature of long-term stem cells is a slow cycling rate, and this can be evaluated experimentally using label retention assays. We used a doxycycline (dox)-inducible GFP-tagged histone system, H2B-GFP, which is incorporated into the DNA during dox feeding, then diluted during subsequent cell division. This system has been used to enrich for highly self-renewing populations of hematopoietic stem cells and muscle satellite cells (28, 29). The experimental design for generating label-retaining cells (LRCs) is shown in Figure 4A. H2B-GFP was incorporated into the majority of periosteal cells (Figure 4B, figure supplement 1A). Quiescent terminally differentiated cells such as osteocytes also effectively retain the label (Figure 4, figure supplement 1B). Flow cytometry was used to track GFP expression in the CD45- fraction of the periosteum (Figure 4B-C). Our periosteal isolation procedure excludes bone tissue and therefore osteocytes, and we have previously demonstrated that our endosteal preparations contain almost no osteocytes (30). After the chase phase, the periosteum contained a small population of true LRCs (GFP^{hi}), as well as a slightly larger GFP^{int} population which would be expected to contain some LRCs. Histologically, the LRCs were mostly in the inner cambium layer of the periosteum (Figure 4, figure supplement 1B). We confirmed that most cells capable of forming CFU-F initially incorporated a GFP label (Figure 4D). After the chase, both GFP+ populations

showed enrichment of CFU-F compared to the GFP- fraction (Figure 4E). We also evaluated cell surface marker expression in LRCs, and found strong enrichment of Sca1 and CD51, more frequent expression of CD90, and fewer CD105+ cells in periosteum (Figure 4F) and endosteum (Figure 4G) compared to GFP- cells. Since label retention alone was not very effective at enriching for CFU-F, we combined this approach with α SMA-labeling. Initially, we labeled 73.4 \pm 7.6% of α SMA+ cells, and after at least 13 weeks chase, 22.6 \pm 7.7% were LRCs, indicating a large proportion of these cells are quiescent (Figure 4, figure supplement 2A). This is a substantially higher proportion of LRCs than we found in the overall CD45- population of the same samples (3.2 \pm 1.5%, p <0.0001). Ex vivo, α SMA-labeled LRCs (GFP+Tom+) were enriched for CFU-F compared to the GFP-Tom+ population (Figure 4, figure supplement 2B). Interestingly, α SMA-labeled LRCs appeared to be lineage-restricted, with evidence of differentiation along the osteogenic lineage, but absence of adipogenic differentiation (Figure 4, figure supplement 2C). α SMA-labeled LRCs were more frequently CD51+, but fewer were CD90+ than Tomato+ non-LRCs (Figure 4, figure supplement 2D).

Evaluation of 'skeletal stem cell' populations in adult mice

In order to systematically evaluate stem cell populations in adult animals, we evaluated the utility of the stain described by Chan et al. to identify SSC and BCSP (13). Stem/progenitor markers and gating strategies should, by definition, exclude mature cell types of the lineage. There are no validated methodologies available to identify osteoblasts using cell surface markers, although some authors report Sca1+CD51+ as stem cells and Sca1-CD51+ cells as committed osteoprogenitors or osteoblasts (31, 32). We utilized the Col2.3GFP transgene to identify mature osteoblasts (33, 34). Col2.3GFP+ cells were always present in endosteal samples (5.4 \pm 5.0% of CD45-) and were detectable in numbers sufficient for analysis in some periosteum samples (1.3 \pm 1.3% of CD45-). CD200 expression was present on over 90% of Col2.3GFP osteoblasts in both endosteum and periosteum, suggesting that CD200 may be useful for positive selection of osteoblasts. Around 35% of endosteal osteoblasts were CD51+ (Figure 5A) (30). A subset of osteoblasts in both tissues were CD105+, while the other markers including Sca1, CD90 and Ly51 (also known as 6C3) were rare or absent in endosteal osteoblasts. The gating strategy to identify SSCs and BCSPs in both periosteum and endosteum is shown in Figure 5C-D. We found that Col2.3GFP+ osteoblasts constituted almost 40% of endosteal cells defined as SSC (CD45-CD51+CD90-Ly51-CD105-CD200+) and 20% defined as BCSP (CD45-CD51+CD90-Ly51-CD105+) (Figure 5D). The proportion of mature osteoblasts in these populations was lower in periosteal samples, but still represented 7-8% of SSC and BCSP (Figure 5C). The pre-BCSP population (CD45-CD51+CD90-Ly51-CD105-CD200-) contains very few osteoblasts. In addition, when we evaluate the proportion of SSC and BCSP in different tissue compartments, we find that the

GFP+ osteoblast populations, particularly in the endosteum, have the highest frequency of these 'stem cells' (Figure 5B). Therefore, these marker combinations used for SSC and BCSP do not exclude mature cells within the osteoblast lineage in adult mice, so do not specifically identify stem cells in this setting.

α SMA identifies transplantable, self-renewing osteoprogenitors

In ex vivo assays, α SMA+ periosteal cells were capable of CFU-F formation (Figure 6A). Following transplantation into a critical-sized calvarial defect, α SMA+ cells were readily identified in all sections evaluated, indicating the ability to engraft and expand in the defect (Figure 6B). Some cells activated Col2.3GFP indicating some differentiation into osteoblasts, similar to a recent study (21). We did not see evidence of cartilage formation in these defects at the time point evaluated. We tested the in vivo self-renewal potential of α SMA-labeled cells by performing a fracture, allowing it to heal for 8 weeks, then refracturing the same bone in a similar location. When tamoxifen was given at the time of initial fracture, around 20% of both osteoblasts and chondrocytes in the secondary fracture callus are derived from the original α SMA-labeled population (Figure 6C-E). This is 35-50% of the contribution in the first fracture, but indicates self-renewal of a proportion of α SMA-labeled progenitors. Contribution to the secondary fracture when tamoxifen was given 14 days prior to the first fracture was not statistically significantly different to the day 0 group, confirming identification of self-renewing osteochondroprogenitors.

Functional contribution of α SMA+ cells to fracture healing

We evaluated the functional importance of α SMA+ cells to fracture healing using the Rosa-DTA model of cellular ablation. Diphtheria toxin (DTA) expression, which causes death of the cells where it is expressed, was driven by α SMACreER, and induced by tamoxifen delivery around the time of fracture. When ablation was performed at the time of fracture (day 0, 1) we saw a 50% reduction in α SMA-labeled cells in 4 days post-fracture (DPF) callus tissue by flow cytometry (Figure 7A). This is consistent with the 50% efficiency of recombination we demonstrated for α SMACreER in vitro (35). Histologically, there is a clear reduction in fracture size and α SMA-labeled cells at 4 DPF (Figure 7B). Histological analysis at 14 DPF revealed a significant reduction in total callus size as well as mineralized area (Figure 7C-D). Micro computed tomography (microCT) results at day 14 confirmed the histological observations (Figure 7E). At 21 DPF, microCT showed no change in total callus volume but a significant decrease in callus bone mass (Figure 7F). Similar impairments in healing were seen whether ablation was performed at the time of fracture or throughout the first 8 days of healing, suggesting that early loss of α SMA+ cells was most important for this phenotype. Overall,

our data demonstrate that partial ablation of α SMA+ progenitors reduced callus formation and delayed mineralization. The less severe phenotype at 21 DPF suggests this may be a delay in healing rather than complete disruption of the process, although the fractures from mice with α SMA-ablation probably never reach the size of control calluses. Healing in the DTA mice may still progress due to compensation of α SMA+ progenitors that escaped ablation, or larger contribution from α SMA-negative progenitors in this setting.

Contribution of other periosteal populations to fracture healing

We have demonstrated that α SMA identifies some, but not all of the cells contributing to osteoblasts and chondrocytes in the fracture callus. We therefore examined the potential contribution of other populations. We tested the previously unexplored hypothesis that mature osteoblast lineage cells may contribute to osteoblast formation in the fracture callus. Col2.3CreER-labeled cells made a small but significant contribution to osteoblast formation in the fracture callus, but only when tamoxifen was given close to the time of fracture (Figure 7A-B). This is in line with previous studies that estimate a lifespan of around two weeks for osteoblasts (30, 36). We did not detect any contribution of Col2.3-labeled cells to chondrocytes. This suggests that committed osteoblast-lineage cells present in the periosteum can contribute to fracture osteoblasts but do not have the plasticity to contribute to chondrocytes.

Finally, we further evaluated PDGFR α as an alternate marker of periosteal progenitor cells as we hypothesized that it may target a broader periosteal progenitor population than α SMA. PDGFR α CreER targeted the majority of periosteal cells 1 day after completion of tamoxifen administration, as well as the majority of osteoblasts on trabecular and endocortical bone surfaces (Figure 7C-E). It also targeted a population of cells in the bone marrow. This labeling was tamoxifen-dependent (Figure 7F). These results were confirmed with immunostaining for PDGFR α that indicated expression in the periosteum, and in endosteal osteoblasts (Figure 7G). There is some discrepancy between our flow data and this result (see Figure 2A and Figure 5A). PDGFR α staining by flow cytometry tends to be weak, and there is rarely a clear demarcation between positive and negative cells (Figure 2, figure supplement 1). In contrast, PDGFR α -driven Cre in combination with a strong reporter gene such as Ai9 amplifies even low transgene activity. It is therefore likely that we are only gating for cells highly expressing PDGFR α in flow cytometry, but this makes it difficult to use as a reliable marker. This discrepancy is consistent with the results of Ambrosi et al. who report much wider expression of PDGFR α using a GFP reporter mouse compared to previous results with antibody staining and flow cytometry (2, 37). Their data also suggests expression of this reporter in

osteoblasts. Another recent study reported much higher PDGFR α expression in bone marrow compared to periosteum in contrast with our flow cytometry results (38). We conclude that PDGFR α is not an optimal marker of progenitor cells within the periosteum due to both technical variability depending on the method used, and expression in mature osteoblasts.

Discussion

Our results indicate that the periosteum of adult mice is highly enriched for cells with markers and phenotype of stem and progenitor cells. Together with other recent studies, our results highlight the presence of unique cell populations within the periosteum that are rare or absent in the bone marrow compartment, and demonstrate that stem cell markers can change with age (16, 20, 21, 38). There is abundant evidence suggesting that fracture healing is impaired if periosteum is removed, or that otherwise critical-sized defects in a variety of bones can regrow if periosteum is retained (39-42). There are also numerous studies reporting superior outcomes with cultured periosteal cells compared to other cell sources like bone marrow in terms of bone formation both in vitro and in vivo (20, 43). Of the markers we examined, we found that most were much more abundant in the periosteum than endosteum. Sca1, CD51, CD90, α SMA and PDGFR α (44) all enrich for CFU-F in periosteum, similar to what has been reported in other cell types. Although we did not thoroughly characterize P α S cells in the periosteum, we note that these cells were very rare in the endosteal compartment. Morikawa et al. report large enrichment of P α S cells following collagenase digestion of crushed bones (2). Our results raise the possibility that some of the cells isolated in their studies were actually derived from the periosteum. We confirmed by immunostaining and use of an inducible Cre that PDGFR α expression was very abundant in the periosteum. This result, and abundant PDGFR α expression shown histologically in osteoblasts were not completely replicated in our flow cytometry data. Ambrosi et al. reported that all Sca1⁺ cells in the bone marrow co-express PDGFR α using a PDGFR α -GFP line which contrasted with the original study characterizing P α S cells (37). This highlights the difficulty in using PDGFR α consistently as a stem and progenitor cell marker. With respect to CD51, our results agree with the studies using neonatal bones indicating that progenitor cells are solely contained within the CD51⁺ population (45), however, a significant proportion of mature osteoblasts are CD51⁺, so additional markers that exclude differentiated cells are required. Finally, our results suggest that strong Sca1 expression is specific to periosteal mesenchymal cells, and enriches for multipotent stem or progenitor cells in combination with CD51, at least in vitro. Sca1 expression was also highly enriched on LRCs in all tissue compartments. A recent study using scRNAseq in periosteal cells suggested Sca1 as a marker of differentiated cells in the periosteum, although it was unclear what cell type these mature cells were (16). Inducible Cre models driven by expression of the Sca1 gene are now available, and would potentially help to confirm the in vivo function of Sca1⁺ cells. Notably, they target endothelial progenitors which will complicate any analysis with these models (46, 47), and one of these models was reported to target very few cells within the bone (48).

Label-retaining cells in the periosteum showed large differences in cell surface marker profile to non-LRCs, and enrichment for CFU-F formation. However, the experimental system presented some limitations, as we did not achieve uniform labeling initially, and some cells had low GFP expression even in the absence of dox. This 'leaky' GFP expression may be related to positioning of the tetO-H2B-GFP cassette in the Col1a1 locus. Following chase, we found that CFU-F formation from the CD45- GFP^{int} population was similar, or in some cases higher than the true GFP^{hi} LRCs. The GFP^{int} population potentially contains a mix of cells including those with doxycycline-independent GFP expression, those who have lost some but not all label, and LRCs that did not achieve bright labeling initially. We are unable to distinguish between these populations. It is also possible that the true LRC population contains terminally differentiated quiescent cells that are present in the periosteum. Finally, CFU-F formation appears to be a feature of progenitor cells as well as stem cells, and progenitors may be enriched in the GFP^{int} population. The use of label retention is likely to perform better in combination with other markers that already enrich for stem cell populations (28, 29). Within the α SMA-labeled population, we saw 4-fold higher CFU-F frequency than α SMA-labeled non-LRC cells. A previous study also reported the presence of heterogeneous LRCs in the periosteum, however they were unable to perform functional characterization, while Nes-GFP+ periosteal cells were not LRCs (38, 49). Interestingly, the previous study indicated that α SMA+ cells were not LRCs, however many antibodies to α SMA stain perivascular cells in larger blood vessels, but do not detect α SMA+ cells in the cambium layer of the periosteum (49). The α SMA+ cells in the cambium layer appear to be the cell subset involved in fracture healing (21, 50). Label-retention may be a useful tool to enrich for periosteal stem cells in ex vivo assays, although more robust assays for testing self-renewal such as serial transplantation are required.

One of the key findings of this study is that α SMA identifies long-term, slow-cycling, self-renewing osteoprogenitors in the adult periosteum that are functionally important for bone and cartilage formation during fracture healing. α SMA+ periosteal cells also contribute to osteoblasts in response to loading (24). The lineage tracing results suggest that α SMA identifies at least two distinct osteochondroprogenitor populations in the periosteum that contribute to fracture healing. Firstly, there is a long-term quiescent tissue-resident progenitor population that contributes to a subset of osteoblasts and chondrocytes for at least 3 months after labeling. This population is presumably re-established following fracture and contributes to healing of a second fracture in the same bone. Secondly, there are cells that activate α SMA after injury, as visualized in studies using real-time α SMA reporters (25). The majority of osteoblasts are derived from α SMA-labeled cells when tamoxifen is given at the time of fracture. The results from the fractures performed after a two-week

chase, which show slightly lower contribution than at the time of fracture, but a trend towards higher contribution than after six or more weeks chase suggest that there may be a third population of tissue-resident osteochondroprogenitor cells that have a limited lifespan or lack self-renewal capacity. RNAseq analysis of α SMA periosteal cells in intact bone suggested there are at least three cell populations present. While we cannot be certain which of these contains stem and progenitor cells, marker gene expression suggests that one cluster is perivascular cells, another is more fibroblast-like, and the intermediate population is likely to contain stem and progenitor cells. Unfortunately few of the cluster marker genes were cell surface markers suitable for flow cytometry-based separation of populations.

We consistently saw lower contribution of α SMA to chondrocytes than to osteoblasts. This may be due to contribution of muscle-derived cells to chondrocytes (51, 52). Notably, α SMA expression is present in some muscle cells, both myogenic satellite cells, and a separate population of stromal cells that can contribute to heterotopic bone formation (27, 53). It is also possible that there is a periosteal population that is restricted to chondrogenic and perhaps fibroblastic lineages, although we are not aware of any cell populations that have shown these properties *in vivo*. Gli1+ cells contributed to more chondrocytes than osteoblasts in a similar fracture model (9). Gli1+ cells also formed fibrous tissue in fractures that failed to heal due to radiation exposure, while α SMA+ cells did not (50). The contribution of Gli1+ cells in the fibrous layer of the periosteum, or from non-periosteal sources could explain these observations. Cxcl12-CreER also appears to identify cells that form mainly chondrocytes in a periosteal fracture callus, however the presence of labeled cells outside the bone marrow compartment was not reported making it difficult to identify the tissue where these cells originated (54).

Lineage tracing with Col2.3CreER indicated that there are cells the periosteum already committed to the osteogenic lineage that participate in osteoblast expansion during fracture healing. The Col2.3CreER+ cells only contribute significantly when tamoxifen is given near the time of fracture indicating that it does not target long-lived self-renewing progenitors. Cells labeled by Prx1, Col2a1, Cathepsin K, LepR and Mx1-driven Cres all make a major contribution to fracture callus osteoblasts, however all these models involve either constitutive Cre expression, or long-term labeling that includes differentiated cells, meaning that a combination of stem/progenitor cells and pre-osteoblasts/osteoblasts could be contributing to new osteoblast formation (16, 17, 20, 21, 50). Prx1-CreER and Sox9-CreER also label cells in the periosteum that contribute to fracture healing (55-57). It is unclear if these populations overlap with α SMA+ cells or represent separate progenitor pools.

However, our results suggest that there is heterogeneity in the cell types contributing to both osteoblasts and chondrocytes in the fracture callus, but by administering tamoxifen at the time of fracture, the majority of periosteal progenitors, particularly those that form osteoblasts, can be genetically targeted by α SMA CreER .

α SMA $^+$ cells are present in the endosteum, but are less frequent than in the periosteum. α SMA is expressed in a growth-related transiently amplifying progenitor population in the trabecular region. It is also activated in cells in situations where there is a greater need for osteoblasts, such as injury, or genetic ablation of osteoblasts (30, 58). However, it does not appear to label cells involved in bone turnover during adulthood, or consistently label long-term injury responsive cells in the bone marrow compartment. α SMA also labels cells involved transiently in tendon growth, as well as identifying progenitors of cementoblasts and periodontal fibroblasts in the periodontium (59, 60). α SMA $^+$ cells are also a major contributor to healing in both these tissues, as well as during reparative dentinogenesis following injury in murine molars (61). There is increasing evidence in bone tissue that different cell types could contribute to homeostasis compared to regeneration. In calvarial bones, the suture provides a niche for cells involved in both growth and healing. Axin2 $^+$ and Gli1 $^+$ cells contribute to both growth and healing, however Prx1 CreER labels a more restricted population only involved in healing (62-64). Cxcl12 $^+$ cells in the central bone marrow do not contribute osteoblast formation under homeostatic conditions, but are activated and recruiting following injury involving the bone marrow (54). α SMA $^+$ cells in the periosteum appear to represent a population involved primarily in response to injury, or increased need for bone formation.

A number of the markers and stains we evaluated did not specifically identify stem cells in the adult periosteum. CD105 was only marker that was more prevalent in endosteum than periosteum (38), and was mostly absent from LRCs in all cell types analyzed. CD105 $^+$ periosteal cells also failed to form CFU-F. CD105 is best known as one of the markers used to identify mesenchymal stem or stromal cells in culture, but has also been used as part of stains to identify or enrich for progenitor populations in the periosteum and other tissues (13, 16, 17, 21). We demonstrated that the BCSP and SSC marker combinations, but not the pre-BCSP population, which were originally developed using neonatal bones, contain a significant proportion of mature osteoblasts when applied to adult bone tissue. This likely influences the observation that these populations expand in settings such as BMP2 treatment or fracture healing, which means some results should be revisited in future when more specific markers for adult bone-residing progenitors are developed (13, 14). Interestingly, a similar stain was used to enrich for periosteal stem cells in a recent study (16). Finally, CD200 was

almost universally expressed on mature osteoblasts. A number of studies suggest that CD200 is present in various stem cell populations, but it definitely does not exclude all mature cells, so should be used with caution in settings where mature osteoblasts are present (13, 16, 65).

In conclusion, we have demonstrated that the periosteum is highly enriched for skeletal stem and progenitor cells compared to endosteum and bone marrow. Our data demonstrate the presence of a long-term periosteum residing osteochondroprogenitor cell population that is identified by expression of α SMA, along with injury-activated α SMA+ progenitors and mature Col2.3+ osteoblasts that also contribute to the healing process. Overall, the periosteum contains quite different mesenchymal populations to those present within the bone marrow compartment, and there are multiple populations that directly contribute to new tissue formation during fracture healing.

Methods

Mice

All animal studies were approved by the institutional animal care and use committee at UConn Health or the University of Auckland. Mouse lines are listed in the key resources table. α SMACreER and Col2.3GFP mice have been described (23, 33). R26-M2rtTA; TetOP-H2B-GFP dual homozygous mice (28), Ai9 Tomato reporter mice (66), Rosa-DTA (67), Col2.3CreER (68) and PdgraCreER (69), were purchased from Jackson Labs. All these strains were maintained on a C57Bl/6J background. NSG immunodeficient mice (NOD.Cg-Prkdcscid Il2rgtm1Wjl/SzJ, stock # 005557) were a gift from David Rowe. All transgenic mice for experiments were bred at UConn Health and were group housed in individually ventilated cages maintained at $22 \pm 2^\circ\text{C}$, $55 \pm 5\%$ humidity and a 12h light-dark cycle and allowed ad libitum access to food and water. Male C57Bl/6J mice were used for experiments at the University of Auckland and were bred at the onsite facility under similar conditions. CreER was activated by tamoxifen in corn oil ($75\mu\text{g/g}$ ip), two doses of tamoxifen were administered 24h apart unless otherwise stated. Animals were assigned to experimental groups in blocks, and cage-mates were generally exposed to the same tamoxifen regimen to avoid inadvertent exposure of low-dose tamoxifen.

Tibia fracture

Closed tibia fractures stabilized by an intramedullary pin were generated mid-shaft as previously described (22). All mice undergoing fracture lineage tracing were female, and were sexually mature young adults (8-16 weeks of age at tamoxifen administration, 8-24 weeks at fracture). The presence of fracture was confirmed by X-ray (Faxitron LX 60). Animals were euthanized and limbs collected for histology 7 or 14 days post fracture (DPF). For secondary fractures, tibia fractures were performed and allowed to heal for 8 weeks with the pin in place. Then a secondary fracture was performed in a similar location, confirmed by X-ray, and collected 7 DPF for histological analysis.

Histology

Bones were fixed for 5-7 days in 4% paraformaldehyde, incubated in 30% sucrose overnight and embedded in cryomatrix (Fisher Scientific). Cryosections ($7\mu\text{m}$) were obtained using a cryostat and tape transfer system (Section-lab, Hiroshima, Japan) as previously described (70). Imaging settings were kept consistent for each dataset. Fluorescent images were obtained with an Axioscan slide scanner (Zeiss). Immunostaining antibodies are listed in the Key Resources Table. For Sox9 and PDGFR α staining, sections were permeabilized in 0.1% Triton X for 15 min, blocked in 2% BSA/PBS for 1h, and stained with primary antibody overnight at 4°C . For osterix staining, sections were

permeabilized in 0.1% Tween-20 for 15 min, blocked in 10% goat serum, 2% BSA/PBS for 1h, stained with anti-Osterix antibody overnight at 4°C. Both sets of slides were washed in 0.1% Tween-20/PBS and stained with secondary antibody for 1h at RT then washed thoroughly. Slides were coverslipped in glycerol/PBS containing DAPI. Image analysis was performed as described previously using ImageJ (24). Samples were excluded from all image analysis for the following reasons: fracture was not evident or callus was absent. For osteoblast analysis, sections were excluded if they did not contain a clear fracture site. Endosteal analysis was only performed in sections that had a clear central marrow cavity present, and new bone formation evident in this region. Chondrocyte analysis was performed at day 7 only, as most cartilage is gone by day 14, and some fractures were excluded due to lack of cartilage tissue for analysis. Briefly, to evaluate Tomato+ contribution to osteoblasts, ROIs were drawn encompassing the fracture callus. Adjacent ROIs encompassing the central area of the callus (1mm either side of the fracture site) as well as more distal regions were drawn (up to 6 ROIs/section), then data were pooled to determine total callus values. The DAPI channel was thresholded and separated using the watershed algorithm, then fluorescent signal for each channel was measured in nuclear regions. Standardized thresholds were set manually for each channel. We calculated the number of cells that were GFP+ or Osx+ (osteoblasts), the number that were Tomato+, and the percentage of osteoblasts that were Tomato+ (dual positive cells/osteoblasts). In most cases, 1 section/bone was analyzed. Where multiple sections were analyzed, results from different sections were consistently very similar and were pooled. A minimum of 3000 nuclei (median 9262) were evaluated for each sample. Similar analysis was performed on the bone marrow compartment when sections were suitable. For chondrocyte analysis, since there was some non-specific staining with the Sox9 antibody, only regions that demonstrated chondrocytic morphology were incorporated in the analysis ROIs.

Cell isolation

For studies comparing different tissue compartments, bone marrow, endosteum and periosteum were isolated from hindlimbs of the same mice as previously described (30, 44). In most cases, 2-3 animals of the same sex were pooled to generate a sample. Briefly, after removal of muscle tissue, bone marrow was flushed and underwent red blood cell lysis (71). Periosteum was scraped off the bone surface and digested in PBS containing 0.05% Collagenase P and 0.2% hyaluronidase (Sigma Aldrich, St Louis, MO, USA) for 1h at 37°C. To isolate endosteal cells, bones were then opened, crushed, loosely attached cells removed by washing, then digested in PBS containing 0.05% Collagenase P for 1h at 37°C. Cells were washed and resuspended in staining medium (SM, 2% FBS, 1mM EDTA in PBS).

Flow cytometry and cell sorting

Cells were stained using antibody cocktails in SM. Antibodies and secondary reagents are listed in Table 1. Analysis was performed on an LSRII or Aria II instrument (BD Biosciences), and sorting was performed on an Aria II. All experiments included unstained controls for establishing gates derived from non-fluorescent mice, and single color controls generated using periosteal or bone marrow cells. Some experiments included FMO controls to assist with gating. Dead cells were excluded in most experiments using DAPI staining (~50ng/ml final concentration). Four-way sorting was performed on selected populations. Cells were sorted into 1.5ml tubes containing 500 μ l collection medium (α MEM 10% FBS). Acquisition and sorting was performed using FACSDiva software and analysis was performed in FlowJo (BD Biosciences). Experiments involved at least 2 biological replicates per group, and most were performed on more than one occasion to ensure consistent outcomes.

In vitro assays

Colony forming unit fibroblast (CFU-F) assays were performed using freshly sorted cells. Live cell numbers were assumed to be 50% of the cells sorted by the machine. Sorted cells were resuspended in α MEM 20% FBS and seeded in 6-well plates, generally at 50 cells/cm², although this varied depending on yield. In most cases, 3 wells were seeded per population, and at least 3 independent samples per population were evaluated. Cells were cultured in a 37°C humidified incubator, 5% O₂, 5% CO₂. Medium was changed on day 4, and cultures were terminated for staining on day 7-8. Cells were fixed in 10% formalin for 10 min, washed in water, then underwent crystal violet staining. For differentiation, after 7 days, medium was changed to an osteogenic/adipogenic combined cocktail containing α MEM 10% FBS 50 μ g/ml ascorbic acid, 4mM β -glycerophosphate, 1 μ M insulin, 0.5 μ M rosiglitazone, and transferred to a normoxic incubator. Medium was changed after 3 days and cultures were terminated after 5 days of differentiation. Plates underwent concurrent ALP staining (86R or B5655, Sigma Aldrich) and Oil Red O staining, were imaged, then underwent crystal violet staining.

Single cell RNAseq analysis

Periosteum was prepared as described above but with a 30 min enzymatic digestion. We sorted Tomato+ cells from periosteal isolations from 2-3 female α SMACreER/Ai9 mice. Cells were isolated from α SMACreER/Ai9/Col2.3GFP mice at 2 days and 6 weeks after tamoxifen and from H2B-GFP/ α SMACreER/Ai9 mice 13 weeks after tamoxifen and withdrawal of doxycycline. No staining was

performed and dead cells were excluded by DAPI staining. Single Tomato+ cells were sorted using the index sort function on the BD Aria II directly into individual wells of a Bio-Rad hard shell 384-well plate. The plate was immediately stored in a -80C freezer. Approximately half a plate per sample was processed for sequencing (192 cells for 2 days and 13 weeks, 216 cells for 6 weeks). Custom designed Drop-Seq barcoded primers from Integrated DNA Technologies (IDT) were delivered into each well of the 384 well plate, with primers in one well sharing the same unique cell barcode and different UMIs. An Echo 525 liquid handler was used to dispense 1 μ l of primers and reaction reagents into each well for cell lysis and cDNA synthesis. Following cDNA synthesis, the contents of each well were collected and pooled into one tube using a Caliper SciClone Liquid Handler. After treatment with exonuclease I to remove unextended primers, the cDNA was PCR amplified for 13 cycles. The cDNA was fragmented and amplified for sequencing with the Nextera XT DNA sample prep kit (Illumina) using custom primers that enabled the specific amplification of only the 3' ends (see Key Resources Table). The libraries were purified, quantified, and sequenced on an Illumina MiSeq. The data preprocessing was performed using Drop-seq tools (version 1.13), with picard (version 2.17.8) for fastq to bam conversion and STAR (version 2.5.4a) for alignment to the reference genome, mm10 (version 1.2.0). Gene expression matrices were generated, and analysis was done using scanpy (version 1.3.7) (72). The data was filtered to remove cells with fewer than 200 genes, normalized and log transformed. The top 900 highly variable genes as measured by dispersion were used for neighborhood graph generation (nearest neighbor = 20) and dimensionality reduction with UMAP (73, 74). Leiden community detection algorithm was used for clustering (26). Data were visualized and plots and heat maps generated by CellView (75).

Label retention studies

R26-M2rtTA; TetOP-H2B-GFP (H2B-GFP) males were crossed with α SMA^{CreER}/Ai9/Ai9 females to generate experimental mice. Mice received doxycycline in their diet (625mg/kg) from P10 for 5 weeks. Males were removed from breeding cages prior to birth of pups to ensure mothers did not ingest dox during subsequent pregnancies. Some animals received two doses of ip tamoxifen at the time of dox withdrawal. The chase period was a minimum of 13 weeks. Animals that were never exposed to dox were included in all experiments as controls.

Calvarial defect transplantation

Mice were anesthetized with ketamine/xylazine (135 mg/kg and 15 mg/kg) and bilateral critical-sized circular defects (3.5 mm diameter) created in the parietal bone as previously described (76). 2500-5000 sorted α SMA-labeled cells were mixed with 2×10^5 BMSCs, resuspended in 7 μ l PBS, loaded on a

healos scaffold and placed into calvaria defects of immunodeficient NSG mice (n=6). After five weeks, mice were euthanized for histological analysis.

Ablation studies

Animals were generated by crossing Rosa-DTA homozygous mice with SMACreER, or where lineage tracing was required, crossing SMACreER/Rosa-DTA with Ai9 and using only Cre+ animals. Fractures were performed in 7-10-week-old animals as previously described (77). Tamoxifen was given 0 and 1 DPF in most cases. Briefly, closed transverse diaphyseal femoral fractures were created using a blunt guillotine, after inserting a 24G needle into the intramedullary canal. To evaluate efficacy of the ablation, flow cytometry and histology were performed 4 DPF. For flow, the callus tissue was dissected and single cell suspension from individual male mice (n=4) was generated, stained with CD45/CD31/Ter119 cocktail and DAPI. For microCT, fractured bones were collected 14 and 21 DPF, fixed in 10% formalin, and scanned (μ CT40, Scanco Medical AG, Bassersdorf, Switzerland) with a voxel size of 12 μ m, 55kV and intensity of 145 μ A. We evaluated 150 slices above and below the fracture site to measure density, and callus volume and calculate bone mass. For histological analysis on day 14, frozen sections were stained using von Kossa and callus size and mineralized areas were quantified using ImageJ software as previously described (77). An additional group given tamoxifen 0, 2, 4, 6 and 8 DPF were included. The 21 DPF analysis group received tamoxifen 0, 2, 4 DPF). Controls with different tamoxifen regimens showed no difference between groups so were pooled. Both male and female mice were included (Day 14: Cre- n=14, 8M 6F; DTA D0,1 n=10, 4M 6F; DTA D0-8 n=8 4M 4F).

Statistics

All experiments include at least three biological replicates. For lineage tracing fracture experiments, we planned to include at least n=6 per group, although long-term tracing groups in particular had more animals included to account for possible exclusions. We planned to include n=10 for DTA studies based on our previous experience with quantitative fracture studies, but numbers and sex distribution were limited by the genotypes of available animals. Exact n values are listed in figures or figure legends, or where ranges are stated, in the source data files. Values represent the number of biological replicates (biological replicates represent 1 mouse/1 fracture for injury studies, and one pool of 2-3 mice for most flow cytometry studies; most of the flow and CFU-F data involves analysis or sorts performed over multiple days or experiments). Graphs show mean \pm standard error of the mean. Flow cytometry data on dot plots and in the text show mean \pm standard deviation. Statistical analysis was performed in GraphPad Prism, using t-tests or one-way or two-way ANOVAs with

appropriate post-hoc tests. For many of the flow cytometry datasets where different populations or tissues from one sample are evaluated, paired tests are used. Details are included in figure legends, and analysis or p values are supplied in the source data files. P<0.05 was used as the threshold for statistical significance.

Acknowledgements

This work has been supported by Connecticut Stem Cell grant 14-SCA-UHC-02, the Health Research Council of New Zealand Sir Charles Hercus Fellowship, and the American Society for Bone and Mineral Research Rising Star Award to B.G.M; Connecticut Regenerative Medicine Research Fund grant 16-RMB-UHC-10 and NIH/NIAMS grants AR055607 and AR070813 to I.K. We gratefully acknowledge the contribution of the Single Cell Biology Lab at The Jackson Laboratory for Genomic Medicine for their expert assistance with the work described in this publication. We thank Prof. David Rowe for providing NSG mice. We thank Drs Emilie Roeder and India Azevedo for assistance with fracture studies, and Dr Liping Wang for performing some of the calvarial defect surgeries.

Key resources table

Reagent type (species) or resource	Designation	Source or reference	Identifiers	Additional information
Genetic reagent (<i>M. musculus</i>)	α SMACreER	PMID: 22083974		
Genetic reagent (<i>M. musculus</i>)	Col2.3CreER	Jackson Labs	016241	
Genetic reagent (<i>M. musculus</i>)	Col2.3GFP	PMID: 11771662		
Genetic reagent (<i>M. musculus</i>)	Ai9	Jackson Labs	007909	
Genetic reagent (<i>M. musculus</i>)	Rosa-DTA	Jackson Labs	009669	
Genetic reagent (<i>M. musculus</i>)	R26-M2rtTA; TetOP-H2B-GFP NSG (NOD.Cg-	Jackson Labs	016836	
Genetic reagent (<i>M. musculus</i>)	Prkdcscid Il2rgtm1Wjl/SzJ)	Jackson Labs	005557	Gift from David Rowe
Genetic reagent (<i>M. musculus</i>)	PdgfraCreER	Jackson Labs	032770	
Antibody	CD45 eFluor450	eBioscience	48-0451	Flow: 1:400
Antibody	Ter119 eFluor450	eBioscience	48-5921	Flow: 1:200
Antibody	CD31 eFluor450	eBioscience	48-0311	Flow: 1:400
Antibody	CD45 APC	eBioscience	17-0451	Flow: 1:400
Antibody	Ter119 APC	eBioscience	17-5921	Flow: 1:200
Antibody	CD31 APC	eBioscience	17-0311	Flow: 1:400
Antibody	CD140a APC	eBioscience	17-1401	Flow: 1:100

Antibody	CD140a PE-Cy7	eBioscience	25-1401	Flow: 1:400
Antibody	CD140b APC	eBioscience	17-1402	Flow: 1:100
Antibody	CD105 APC	eBioscience	17-1051	Flow: 1:200
Antibody	CD90.2 APC eFluor 780	eBioscience	47-0902	Flow: 1:200
Antibody	CD90.2 BV605	BD Bioscience	740334	Flow: 1:100
Antibody	CD51 Biotin	eBioscience	13-0512	Flow: 1:100
Antibody	Sca1 AlexaFluor700	eBioscience	56-5981	Flow: 1:100
Antibody	Ly51 BV711	BD Bioscience	740691	Flow: 1:100
Antibody	CD200 PE	Biolegend	123807	Flow: 1:100
Antibody	Sox9	EMD Millipore	ABE2868	IHC: 1:200
Antibody	Osterix	Abcam	ab209484	IHC: 1:400
Antibody	PDGFR α	R&D Systems	AF1062	IHC: 1:80
Antibody	Goat anti rabbit AlexaFluor647	ThermoFisher	A21244	IHC: 1:300
Chemical compound, drug	Streptavidin APC eFluor 780	eBioscience	47-4317	Flow: 1:400
Chemical compound, drug	Streptavidin PE-Cy7	eBioscience	25-4317	Flow: 1:400
Chemical compound, drug	Streptavidin APC	eBioscience	17-4317	Flow: 1:400
Chemical compound, drug	Tamoxifen	Sigma Aldrich	T5648	75mg/kg i.p 625mg/kg in Teklad Custom Diet
Chemical compound, drug	Doxycycline	Envigo	TD.01306	5'-AAGCAGTGGTATCAACGC AGAGTACJJJJJJJJJJNNNNN NNNTTTTTTTTTTTTTTTTTT TTTTTTTTTTVN-3' 5'-AATGATACGGCGACCACC GAGATCTACACGCCTGTCCG CGGAAGCAGTGGTATCAACG CAGAGT*A*C-3' 5'-CGGAAGCAGTGGTATCAA CGCAGAGTAC-3'
Sequence-based reagent	Barcode oligo primer	IDT		
Sequence-based reagent	Custom primer sequence	IDT		
Sequence-based reagent	Custom read 1 sequence	IDT		
Dataset	scRNAseq α SMA dataset	GEO	TBD	

References:

1. Siclari VA, Zhu J, Akiyama K, Liu F, Zhang X, Chandra A, et al. Mesenchymal progenitors residing close to the bone surface are functionally distinct from those in the central bone marrow. *Bone*. 2013;53(2):575-86.
2. Morikawa S, Mabuchi Y, Kubota Y, Nagai Y, Niibe K, Hiratsu E, et al. Prospective identification, isolation, and systemic transplantation of multipotent mesenchymal stem cells in murine bone marrow. *J Exp Med*. 2009;206(11):2483-96.
3. Cao Y, Buckels EJ, Matthews BG. Markers for Identification of Postnatal Skeletal Stem Cells In Vivo. *Curr Osteoporos Rep*. 2020;18(6):655-65.
4. Wolff LI, Hartmann C. A second career for chondrocytes—transformation into osteoblasts. *Curr Osteoporos Rep*. 2019;17(3):129-37.
5. Yang L, Tsang KY, Tang HC, Chan D, Cheah KS. Hypertrophic chondrocytes can become osteoblasts and osteocytes in endochondral bone formation. *Proc Natl Acad Sci U S A*. 2014;111(33):12097-102.
6. Yang G, Zhu L, Hou N, Lan Y, Wu XM, Zhou B, et al. Osteogenic fate of hypertrophic chondrocytes. *Cell Res*. 2014;24(10):1266-9.
7. Zhou X, von der Mark K, Henry S, Norton W, Adams H, de Crombrughe B. Chondrocytes transdifferentiate into osteoblasts in endochondral bone during development, postnatal growth and fracture healing in mice. *PLoS Genet*. 2014;10(12):e1004820.
8. Mizuhashi K, Ono W, Matsushita Y, Sakagami N, Takahashi A, Saunders TL, et al. Resting zone of the growth plate houses a unique class of skeletal stem cells. *Nature*. 2018;563(7730):254-8.
9. Shi Y, He G, Lee WC, McKenzie JA, Silva MJ, Long F. Gli1 identifies osteogenic progenitors for bone formation and fracture repair. *Nat Commun*. 2017;8(1):2043.
10. Worthley DL, Churchill M, Compton JT, Taylor Y, Rao M, Si Y, et al. Gremlin 1 identifies a skeletal stem cell with bone, cartilage, and reticular stromal potential. *Cell*. 2015;160(1-2):269-84.
11. Wang W, Strecker S, Liu Y, Wang L, Assanah F, Smith S, et al. Connective Tissue Growth Factor reporter mice label a subpopulation of mesenchymal progenitor cells that reside in the trabecular bone region. *Bone*. 2015;71:76-88.
12. Chan CKF, Gulati GS, Sinha R, Tompkins JV, Lopez M, Carter AC, et al. Identification of the human skeletal stem cell. *Cell*. 2018;175(1):43-56 e21.
13. Chan Charles KF, Seo Eun Y, Chen James Y, Lo D, McArdle A, Sinha R, et al. Identification and specification of the mouse skeletal stem cell. *Cell*. 2015;160(1–2):285-98.
14. Marecic O, Tevlin R, McArdle A, Seo EY, Wearada T, Duldulao C, et al. Identification and characterization of an injury-induced skeletal progenitor. *Proc Natl Acad Sci U S A*. 2015;112(32):9920-5.
15. Tevlin R, Seo EY, Marecic O, McArdle A, Tong XM, Zimdahl B, et al. Pharmacological rescue of diabetic skeletal stem cell niches. *Sci Transl Med*. 2017;9(372).
16. Debnath S, Yallowitz AR, McCormick J, Lalani S, Zhang T, Xu R, et al. Discovery of a periosteal stem cell mediating intramembranous bone formation. *Nature*. 2018;562(7725):133-9.
17. Zhou BO, Yue R, Murphy MM, Peyer JG, Morrison SJ. Leptin-receptor-expressing mesenchymal stromal cells represent the main source of bone formed by adult bone marrow. *Cell Stem Cell*. 2014;15(2):154-68.
18. Colnot C. Skeletal cell fate decisions within periosteum and bone marrow during bone regeneration. *J Bone Miner Res*. 2009;24(2):274-82.
19. Roberts SJ, van Gastel N, Carmeliet G, Luyten FP. Uncovering the periosteum for skeletal regeneration: The stem cell that lies beneath. *Bone*. 2015;70:10-8.
20. Duchamp de Lageneste O, Julien A, Abou-Khalil R, Frangi G, Carvalho C, Cagnard N, et al. Periosteum contains skeletal stem cells with high bone regenerative potential controlled by Periostin. *Nat Commun*. 2018;9(1):773.
21. Ortinau LC, Wang H, Lei K, Deveza L, Jeong Y, Hara Y, et al. Identification of functionally distinct Mx1+ α SMA+ periosteal skeletal stem cells. *Cell Stem Cell*. 2019;25(6):784-96.

22. Matthews BG, Grcevic D, Wang L, Hagiwara Y, Roguljic H, Joshi P, et al. Analysis of alphaSMA-labeled progenitor cell commitment identifies Notch signaling as an important pathway in fracture healing. *J Bone Miner Res*. 2014;29(5):1283-94.
23. Grcevic D, Pejda S, Matthews BG, Repic D, Wang LP, Li HT, et al. In vivo fate mapping identifies mesenchymal progenitor cells. *Stem Cells*. 2012;30(2):187-96.
24. Matthews BG, Wee NKY, Widjaja VN, Price JS, Kalajzic I, Windahl SH. alphaSMA Osteoprogenitor Cells Contribute to the Increase in Osteoblast Numbers in Response to Mechanical Loading. *Calcif Tissue Int*. 2020;106(2):208-17.
25. Mori Y, Adams D, Hagiwara Y, Yoshida R, Kamimura M, Itoi E, et al. Identification of a progenitor cell population destined to form fracture fibrocartilage callus in Dickkopf-related protein 3-green fluorescent protein reporter mice. *J Bone Miner Metab*. 2016;34(6):606-14.
26. Traag VA, Waltman L, van Eck NJ. From Louvain to Leiden: guaranteeing well-connected communities. *Sci Rep*. 2019;9(1):5233.
27. Matthews BG, Torreggiani E, Roeder E, Matic I, Grcevic D, Kalajzic I. Osteogenic potential of alpha smooth muscle actin expressing muscle resident progenitor cells. *Bone*. 2016;84:69-77.
28. Foudi A, Hochedlinger K, Van Buren D, Schindler JW, Jaenisch R, Carey V, et al. Analysis of histone 2B-GFP retention reveals slowly cycling hematopoietic stem cells. *Nat Biotechnol*. 2009;27(1):84-90.
29. Chakkalakal JV, Christensen J, Xiang W, Tierney MT, Boscolo FS, Sacco A, et al. Early forming label-retaining muscle stem cells require p27kip1 for maintenance of the primitive state. *Development*. 2014;141(8):1649-59.
30. Matic I, Matthews BG, Wang X, Dymont NA, Worthley DL, Rowe DW, et al. Quiescent bone lining cells are a major source of osteoblasts during adulthood. *Stem Cells*. 2016;34(12):2930-42.
31. Arthur A, Nguyen TM, Paton S, Zannettino ACW, Gronthos S. Loss of EfnB1 in the osteogenic lineage compromises their capacity to support hematopoietic stem/progenitor cell maintenance. *Exp Hematol*. 2019;69:43-53.
32. Lundberg P, Allison SJ, Lee NJ, Baldock PA, Brouard N, Rost S, et al. Greater bone formation of Y2 knockout mice is associated with increased osteoprogenitor numbers and altered Y1 receptor expression. *J Biol Chem*. 2007;282(26):19082-91.
33. Kalajzic I, Kalajzic Z, Kaliterna M, Gronowicz G, Clark SH, Lichtler AC, et al. Use of type I collagen green fluorescent protein transgenes to identify subpopulations of cells at different stages of the osteoblast lineage. *J Bone Miner Res*. 2002;17(1):15-25.
34. Dacquin R, Starbuck M, Schinke T, Karsenty G. Mouse alpha1(I)-collagen promoter is the best known promoter to drive efficient Cre recombinase expression in osteoblast. *Dev Dyn*. 2002;224(2):245-51.
35. Sinder BP, Novak S, Wee NKY, Basile M, Maye P, Matthews BG, et al. Engraftment of skeletal progenitor cells by bone-directed transplantation improves osteogenesis imperfecta murine bone phenotype. *Stem Cells*. 2020;38(4):530-41.
36. Jilka RL, Weinstein RS, Bellido T, Parfitt AM, Manolagas SC. Osteoblast programmed cell death (apoptosis): modulation by growth factors and cytokines. *J Bone Miner Res*. 1998;13(5):793-802.
37. Ambrosi TH, Scialdone A, Graja A, Gohlke S, Jank AM, Bocian C, et al. Adipocyte Accumulation in the Bone Marrow during Obesity and Aging Impairs Stem Cell-Based Hematopoietic and Bone Regeneration. *Cell Stem Cell*. 2017;20(6):771-84 e6.
38. Tournaire G, Stegen S, Giacomini G, Stockmans I, Moermans K, Carmeliet G, et al. Nestin-GFP transgene labels skeletal progenitors in the periosteum. *Bone*. 2020;133:115259.
39. Mashimo T, Saito T, Shiratsuchi H, Iwata J, Uryu T, Tamagawa T, et al. Assessment of the bone regenerative process from fibular periosteum by in vivo micro computed tomography. *J Hard Tissue Biol*. 2013;22(4):391-9.

40. Kuwahara ST, Serowoky MA, Vakhshori V, Tripuraneni N, Hegde NV, Lieberman JR, et al. Sox9+ messenger cells orchestrate large-scale skeletal regeneration in the mammalian rib. *Elife*. 2019;8.
41. Ozaki A, Tsunoda M, Kinoshita S, Saura R. Role of fracture hematoma and periosteum during fracture healing in rats: interaction of fracture hematoma and the periosteum in the initial step of the healing process. *J Orthop Sci*. 2000;5(1):64-70.
42. Zhang X, Xie C, Lin AS, Ito H, Awad H, Lieberman JR, et al. Periosteal progenitor cell fate in segmental cortical bone graft transplantations: implications for functional tissue engineering. *J Bone Miner Res*. 2005;20(12):2124-37.
43. Van Gastel N, Stegen S, Stockmans I, Moermans K, Schrooten J, Graf D, et al. Expansion of murine periosteal progenitor cells with fibroblast growth factor 2 reveals an intrinsic endochondral ossification program mediated by bone morphogenetic protein 2. *Stem Cells*. 2014;32(9):2407-18.
44. Wang X, Matthews BG, Yu J, Novak S, Grcevic D, Sanjay A, et al. PDGF modulates BMP2-induced osteogenesis in periosteal progenitor cells. *JBMR Plus*. 2019;3(5):e10127.
45. Chan CKF, Chen C-C, Luppen CA, Kim J-B, DeBoer AT, Wei K, et al. Endochondral ossification is required for haematopoietic stem-cell niche formation. *Nature*. 2009;457(7228):490-4.
46. Vagnozzi RJ, Sargent MA, Lin SJ, Palpant NJ, Murry CE, Molkentin JD. Genetic Lineage Tracing of Sca-1(+) Cells Reveals Endothelial but Not Myogenic Contribution to the Murine Heart. *Circulation*. 2018;138(25):2931-9.
47. Tang J, Li Y, Huang X, He L, Zhang L, Wang H, et al. Fate Mapping of Sca1(+) Cardiac Progenitor Cells in the Adult Mouse Heart. *Circulation*. 2018;138(25):2967-9.
48. Vesprey A, Suh ES, Aytürk DG, Yang X, Rogers M, Sosa B, et al. Bone Marrow Stromal Cells in a Mouse Model of Metal Implant Osseointegration. *BioRxiv*. 2020:2020.08.17.254433.
49. Cherry HM, Roelofs AJ, Kurth TB, De Bari C. In vivo phenotypic characterisation of nucleoside label-retaining cells in mouse periosteum. *Eur Cell Mater*. 2014;27:185-95; discussion 95.
50. Wang L, Tower RJ, Chandra A, Yao L, Tong W, Xiong Z, et al. Periosteal mesenchymal progenitor dysfunction and extraskeletally-derived fibrosis contribute to atrophic fracture nonunion. *J Bone Miner Res*. 2019;34(3):520-32.
51. Abou-Khalil R, Yang F, Lieu S, Julien A, Perry J, Pereira C, et al. Role of muscle stem cells during skeletal regeneration. *Stem Cells*. 2015;33(5):1501-11.
52. Liu R, Birke O, Morse A, Peacock L, Mikulec K, Little DG, et al. Myogenic progenitors contribute to open but not closed fracture repair. *BMC Musculoskelet Disord*. 2011;12:288.
53. Kolind M, Bobynd JD, Matthews BG, Mikulec K, Aiken A, Little DG, et al. Lineage tracking of mesenchymal and endothelial progenitors in BMP-induced bone formation. *Bone*. 2015;81:53-9.
54. Matsushita Y, Nagata M, Kozloff KM, Welch JD, Mizuhashi K, Tokavanich N, et al. A Wnt-mediated transformation of the bone marrow stromal cell identity orchestrates skeletal regeneration. *Nat Commun*. 2020;11(1).
55. He X, Bougioukli S, Ortega B, Arevalo E, Lieberman JR, McMahon AP. Sox9 positive periosteal cells in fracture repair of the adult mammalian long bone. *Bone*. 2017;103:12-9.
56. Xiao H, Wang L, Zhang T, Chen C, Chen H, Li S, et al. Periosteum progenitors could stimulate bone regeneration in aged murine bone defect model. *Journal of Cellular and Molecular Medicine*. 2020;24(20):12199-210.
57. Kawanami A, Matsushita T, Chan YY, Murakami S. Mice expressing GFP and CreER in osteochondro progenitor cells in the periosteum. *Biochem Biophys Res Commun*. 2009;386(3):477-82.
58. Kalajzic Z, Li H, Wang LP, Jiang X, Lamothe K, Adams DJ, et al. Use of an alpha-smooth muscle actin GFP reporter to identify an osteoprogenitor population. *Bone*. 2008;43(3):501-10.
59. Dymant NA, Hagiwara Y, Matthews BG, Li Y, Kalajzic I, Rowe DW. Lineage tracing of resident tendon progenitor cells during growth and natural healing. *PLoS ONE*. 2014;9(4):e96113.
60. Roguljic H, Matthews BG, Yang W, Cvija H, Mina M, Kalajzic I. In vivo Identification of periodontal progenitor cells. *J Dent Res*. 2013;92(8):709-15.

61. Vidovic I, Banerjee A, Fatahi R, Matthews BG, Dymont NA, Kalajzic I, et al. alphaSMA-expressing perivascular cells represent dental pulp progenitors in vivo. *J Dent Res*. 2017;96(3):323-30.
62. Zhao H, Feng JF, Ho TV, Grimes W, Urata M, Chai Y. The suture provides a niche for mesenchymal stem cells of craniofacial bones. *Nat Cell Biol*. 2015;17(4):386-+.
63. Maruyama T, Jeong J, Sheu TJ, Hsu W. Stem cells of the suture mesenchyme in craniofacial bone development, repair and regeneration. *Nat Commun*. 2016;7.
64. Wilk K, Yeh SCA, Mortensen LJ, Ghaffarigarakani S, Lombardo CM, Bassir SH, et al. Postnatal calvarial skeletal stem cells expressing PRX1 reside exclusively in the calvarial sutures and are required for bone regeneration. *Stem Cell Rep*. 2017;8(4):933-46.
65. Lukac N, Katavic V, Novak S, Sucur A, Filipovic M, Kalajzic I, et al. What do we know about bone morphogenetic proteins and osteochondroprogenitors in inflammatory conditions? *Bone*. 2020;137:115403.
66. Madisen L, Zwingman TA, Sunkin SM, Oh SW, Zariwala HA, Gu H, et al. A robust and high-throughput Cre reporting and characterization system for the whole mouse brain. *Nat Neurosci*. 2010;13(1):133-40.
67. Voehringer D, Liang HE, Locksley RM. Homeostasis and effector function of lymphopenia-induced "memory-like" T cells in constitutively T cell-depleted mice. *J Immunol*. 2008;180(7):4742-53.
68. Kim JE, Nakashima K, de Crombrughe B. Transgenic mice expressing a ligand-inducible cre recombinase in osteoblasts and odontoblasts: a new tool to examine physiology and disease of postnatal bone and tooth. *Am J Pathol*. 2004;165(6):1875-82.
69. Chung MI, Bujnis M, Barkauskas CE, Kobayashi Y, Hogan BLM. Niche-mediated BMP/SMAD signaling regulates lung alveolar stem cell proliferation and differentiation. *Development*. 2018;145(9).
70. Dymont NA, Jiang X, Chen L, Hong SH, Adams DJ, Ackert-Bicknell C, et al. High-throughput, multi-image cryohistology of mineralized tissues. *J Vis Exp*. 2016;115:e54468.
71. Matthews BG, Roeder E, Wang X, Aguila HL, Lee SK, Grcevic D, et al. Splenomegaly, myeloid lineage expansion and increased osteoclastogenesis in osteogenesis imperfecta murine. *Bone*. 2017;103:1-11.
72. Wolf FA, Angerer P, Theis FJ. SCANPY: large-scale single-cell gene expression data analysis. *Genome Biol*. 2018;19(1):15.
73. Satija R, Farrell JA, Gennert D, Schier AF, Regev A. Spatial reconstruction of single-cell gene expression data. *Nat Biotechnol*. 2015;33(5):495-502.
74. Becht E, McInnes L, Healy J, Dutertre CA, Kwok IWH, Ng LG, et al. Dimensionality reduction for visualizing single-cell data using UMAP. *Nat Biotechnol*. in press.
75. Bolisetty MT, Stitzel ML, Robson P. CellView: Interactive exploration of high dimensional single cell RNA-seq data. *bioRxiv*. 2017:123810.
76. Gohil SV, Adams DJ, Maye P, Rowe DW, Nair LS. Evaluation of rhBMP-2 and bone marrow derived stromal cell mediated bone regeneration using transgenic fluorescent protein reporter mice. *J Biomed Mater Res A*. 2014;102(12):4568-80.
77. Novak S, Roeder E, Sinder BP, Adams DJ, Siebel CW, Grcevic D, et al. Modulation of Notch1 signaling regulates bone fracture healing. *J Orthop Res*. 2020;38(11):2350-61.

Figure legends

Figure 1: α SMA identifies long term progenitor cells in the periosteum

Representative images of tibia mid-shaft periosteum (A) 14 days or (B) 56 days after tamoxifen with the periosteal surface near the top and endosteal surface near the bottom of the image. Percentage of α SMA-labeled (Tom+) cells within the CD45- population at different time points in (C) periosteum and (D) endosteum as measured by flow cytometry (n=2-5). Fracture histology of representative day 7 tibial fracture calluses in different groups. Diagrams indicate the experimental design. (E) α SMA-labeled with tamoxifen (Tam) at day -1, 0; (F) α SMA-labeled with tamoxifen at day -91, -90; Quantification of Col2.3GFP+ osteoblasts derived from α SMA-labeled cells in the fracture callus based on image analysis (Tom+GFP+ cells/GFP+ cells) in (G) day 7 fracture callus and (H) day 14 fracture callus at different times after tamoxifen administration. (I) Quantification of Sox9+ chondrocytes derived from α SMA-labeled cells in day 7 fracture callus. All images show mineralized bone by dark field (gray), and DAPI+ nuclei in blue. Scale bars are 100 μ m (A,B) or 250 μ m (E-F). In F, the boxed area is magnified and α SMA-labeled osteoblasts as quantified in G-H are indicated with arrowheads. Approximate callus area used for analysis is indicated by the dashed lines in E-F, cortical bone surface defines the inner boundary. * p<0.05 compared to no tamoxifen control with ANOVA followed by Dunnett's posttest. # p<0.05 compared to tamoxifen day 0 group.

Figure 1 (Figure supplement 1): α SMA lineage tracing in the bone marrow compartment of juvenile mice.

Lineage tracing in the distal femur of α SMACreER/Ai9 mice at different time points after tamoxifen treatment at 4-5 weeks of age. (A) and (B) are replicates of data shown in Grcevic et al (23). Both show background signal in bone marrow in green, and (C-F) have DAPI staining in blue. After 17 days, many osteoblasts and osteocytes in trabeculae are labeled, but at day 70 magnified areas show few labeled cells are present in the primary spongiosa (D), but labeled osteocytes are retained in more proximal trabeculae (E) and in some cortical regions (F). Muscle is labeled due to targeting of some satellite cells by α SMACreER (27). Scale bars are 250 μ m (A-C) and 100 μ m (D-F). gp, growth plate.

Figure 1 (Figure supplement 2): α SMA lineage tracing in the bone marrow compartment of adult mice.

Proximal tibia trabecular histology in α SMACreER/Ai9/Col2.3GFP mice 14 days (A) and 100 days (B) after tamoxifen treatment during adulthood (at least 8 weeks of age). Note that there are few red cells, and almost no contribution to osteoblasts or osteocytes. Scale bars are 250 μ m. gp, growth plate.

Figure 1 (Figure supplement 3): Minimal α SMA^{CreER} leakiness in fracture callus, and contribution to endosteal bone formation.

(A) Fracture histology of representative day 7 callus in an α SMA^{CreER}/Ai9/Col2.3GFP mouse never exposed to tamoxifen showing the red channel only and merged image. The magnified images show the boxed area. A small number of red cells are visible, however very few colocalize with Col2.3GFP. Images show mineralized bone by dark field (gray), and DAPI+ nuclei in blue. Callus area is outlined in white. Scale bar is 250 μ m. (B) Contribution of α SMA-labeled cells to new Col2.3GFP+ osteoblasts in the bone marrow compartment (as indicated by pink box in A) in day 7 fractures, and (C) in day 14 fractures. * $p < 0.05$ compared to no tamoxifen control with ANOVA followed by Dunnett's posttest. # $p < 0.05$ compared to tamoxifen day 0 group.

Figure 2: Mesenchymal stem cell markers are enriched in periosteum

Flow cytometry and cell sorting was used to evaluate marker expression in tissue from adult long bones. (A) Expression of cell surface markers in periosteum, endosteum and bone marrow samples as a percentage of the CD45/Ter119/CD31- fraction, $n=4-50$. Expression in periosteum is significantly different from both bone marrow and endosteum for all markers (2-way ANOVA with posttest comparing cell types). (B) CFU-F formation in the total CD45/Ter119/CD31- fraction. (C) Representative dot plot showing gating of α SMA-labeled cells. (D) Proportion of α SMA-labeled cells within the CD45/Ter119/CD31- gate 2-3 days after tamoxifen in different tissue compartments ($n=17$). Cell surface marker expression in the Tomato+ population 2-3 days after tamoxifen in (E) periosteum and (F) endosteum ($n=4-17$). (G) Cell surface profile of α SMA-labeled periosteum cells at different time points ($n=2-7$). * $p < 0.05$ compared to CD45- population.

Figure 2 (Figure supplement 1): Flow cytometry plots of mesenchymal progenitor marker expression

Representative plots showing (A) the initial gating scheme to enable analysis of CD45/CD31/Ter119-mesenchymal cell populations, and expression of indicated markers in (B) periosteum, (C) endosteum and (D) bone marrow of representative samples in relation to Sca1. Quadrant percentages are specific to the sample that is shown. The periosteum, endosteum and bone marrow samples in each column come from the same sample (obtained from 2 animals). FSC, forward scatter; SSC, side scatter.

Figure 2 (Figure supplement 2): Sca1+CD51+ and CD90+ periosteal mesenchymal cells are enriched for multipotent progenitor cells

(A) CFU-F of different CD45- periosteal populations (n=3-4). * p<0.05 compared to total CD45- based on 1-way ANOVA with Dunnett's posttest. (B) Differentiation potential of cell populations grown in mixed osteogenic adipogenic conditions. Pink is ALP stain, red is oil red O, colonies indicated show osteogenic only (blue arrowhead), adipogenic only (black arrowhead) and mixed (*) colonies. (C) Quantification of colony differentiation from different populations. (D) Dot plots indicating different populations sorted and analyzed and percentage of α SMA+ cells (Tomato+ cells 2-3 days after tamoxifen injection) within each of the CD45- cell populations indicated (n=10-16).

Figure 3: Single cell RNAseq analysis of α SMA-Tom+ cells

Plate-based RNAseq was performed on α SMA-Tom+ cells at up to 13 weeks after tamoxifen delivery. (A) UMAP cluster plot indicating four clusters. (B) Violin plots of top markers for clusters 1-3. (C) Distribution of cells in clusters 1-3 at different time points following tamoxifen. (D) Heat map of expression of putative skeletal stem and periosteal progenitor markers.

Figure 3 (Figure supplement 1): Quality control data for single cell RNAseq dataset

(A) Gating for cell sorting of the 6-week chase cells. (B) Violin plots showing summary data for unique molecular identifier (UMI) counts, number of genes detected, and proportion of mitochondrial transcripts within the dataset.

Figure 3 (Figure supplement 2): Heat maps of cluster markers

Heat map indicating expression of cluster markers with AUROC values >0.7 for, (A) clusters 1-3 which appear to be periosteal populations, and (B) cluster 4 which show expression of skeletal muscle lineage genes.

Figure 4: Label-retaining cells are enriched for most progenitor markers

(A) Experimental design for label-retaining cell experiments. (B) Representative gating of the CD45- population in different periosteum samples to define three populations based on GFP expression. (C) Quantification of different GFP populations in a representative experiment for periosteum and endosteum (n=1, no dox; n=4, no chase; n=6, 13 week chase). (D) CFU-F frequency in different CD45- GFP populations in periosteal no chase samples (n=3), and (E) following chase (n=6). Cell surface marker expression is shown in different CD45- GFP subsets following chase (populations equivalent to right hand label-retaining cell plot in B) in (F) periosteum cells and (G) endosteal cells. Data is

pooled from 3 separate experiments involving 13-22 weeks chase (n=19). * p<0.05, repeated measures ANOVA with Dunnett's posttest compared to GFP- population.

Figure 4 (Figure supplement 1): Histology of H2B-GFP/ α SMA CreER/Ai9 femurs

(A) H2B-GFP expression in a distal femur following 5 weeks dox, and 2 days after tamoxifen. (B) H2B-GFP label-retaining cells after 13 weeks chase, tamoxifen was given at the time of dox withdrawal. Boxed areas are magnified. Arrowheads indicate GFP+ α SMA-Tom+ cells in the cambium layer of the periosteum. gp, growth plate. Scale bars are 250 μ m or 100 μ m (high magnification images).

Figure 4 (Figure supplement 2): α SMA-labeled periosteal label-retaining cells are enriched for CFU-F

(A) Representative flow plots showing identification of α SMA-labeled label-retaining cells. Values represent an average of n=3-10. (B) CFU-F formation and (C) differentiation of colonies under mixed osteogenic/adipogenic conditions of α SMA-labeled label-retaining cells and other subpopulations (n=5 for CFU-F, n=3 for differentiation). (D) Cell-surface marker expression in α SMA-labeled subpopulations. * p<0.05 compared to negative population, # p<0.05 compared to Tom+GFP- population.

Figure 5: BCSP/SSC populations in adult bone contain mature osteoblasts

(A) Marker expression on Col2.3GFP+ osteoblasts, n=4-32. (B) Frequency of BCSP and SSC populations in different tissue compartments and populations (n=8-12). (C-D) Gating to identify bone, cartilage and stromal progenitors (BCSP), pre-BCSP and skeletal stem cells (SSC), and presence of Col2.3GFP+ osteoblasts as a major component of these populations in periosteum (C) and endosteum (D). Mean \pm standard deviation for % GFP+ cells are shown.

Figure 6: α SMA-labeled cells are transplantable self-renewing osteochondroprogenitors

(A) CFU-F frequency of periosteal α SMA-labeled cells sorted 2 days after tamoxifen. (B) Engraftment of transplanted α SMA-labeled cells in a calvarial defect 5 weeks after transplantation. Arrowheads indicate cells that are Col2.3GFP+. Quantification of α SMA-labeled cell contribution to (C) osteoblasts and (D) chondrocytes in day 7 secondary fracture calluses are shown. (E) Experimental design and fracture callus histology following a second tibia fracture in α SMA CreER/Ai9/Col2.3GFP mice showing contribution of Tomato+ cells to callus tissue including osteoblasts (F) and Sox9+ chondrocytes (white) (G). (H-J) Histology of a similar secondary fracture where tamoxifen was given 14 days prior to the primary fracture. White arrowheads indicate α SMA-labeled Col2.3GFP+

osteoblasts, orange arrowheads indicate α SMA-labeled Sox9⁺ chondrocytes. DAPI stain is shown in blue. Approximate callus area used for analysis is indicated by the dashed lines in E and H. Scale bars indicate 250 μ m (low magnification) and 100 μ m (high magnification).

Figure 7: Ablation of α SMA⁺ cells impairs fracture healing.

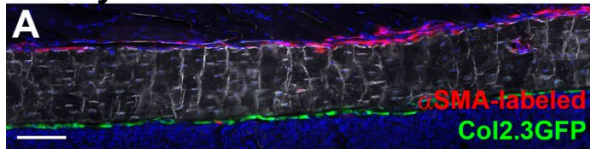
(A) Flow cytometry of day 4 fracture callus from control α SMACreER/Ai9 mice and DTA animals (α SMACreER/Rosa-DTA/Ai9) indicating significantly fewer ($p < 0.01$) labeled cells in the ablation model (mean \pm SD shown), $n=4$. (B) Representative histological sections from day 4 fracture callus in controls or with DTA-mediated ablation. The outline of the callus is indicated. (C) Histological analysis of callus area and mineralized area at day 14, and (D), representative images of von-Kossa staining ($n=4-7$). (E) MicroCT analysis of day 14 fracture callus in DTA- and DTA+ mice that had undergone two different tamoxifen regimens to ablate α SMA⁺ cells, day 0, 1 of fracture or day 0, 2, 4, 6, 8. Callus tissue volume and bone mass were measured. Cre- $n=14$, 8 male 6 female; DTA D0-1 $n=10$, 4M 6F; DTA D0-8 $n=8$ 4M 4F). (F) MicroCT analysis of day 21 fracture callus in mice treated with tamoxifen on day 0, 2, and 4 ($n=14-15$).

Figure 8: Contribution of mature osteoblasts to fracture healing and PDGFR α distribution

(A) Fracture histology of a representative day 7 tibial fracture callus from a Col2.3CreER/Ai9 treated with tamoxifen at days -4 and -3. Mineralized bone is shown by dark field (gray), and DAPI⁺ nuclei in blue. Scale bar is 250 μ m. (B) Quantification of Col2.3-labeled cell contribution to Osx⁺ osteoblasts. * $P < 0.05$ based on ANOVA with Dunnett's posttest compared to no tamoxifen group. (C) Tibia histology of PdgfraCreER/Ai9 mice given three daily doses of tamoxifen and euthanized one day later. Scale bar is 200 μ m. Magnified areas of, (D) trabecular, and (E) cortical bone are shown. (F) Tibial histology of a PdgfraCreER/Ai9 mouse that had not been exposed to tamoxifen showing minimal leakiness of the CreER. Representative images of $n=3$ aged 5-8 weeks of age are shown. (G) PDGFR α immunostaining of bone. Scale bar is 50 μ m. bm, bone marrow; gp, growth plate; p, periosteum.

Figure 1

14 day chase



56 day chase

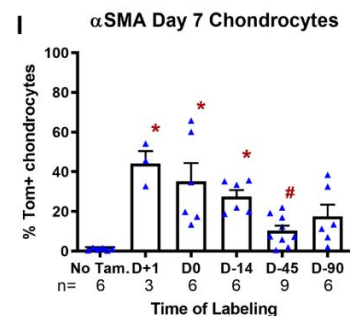
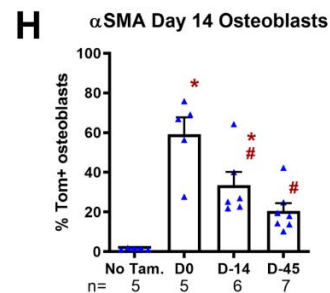
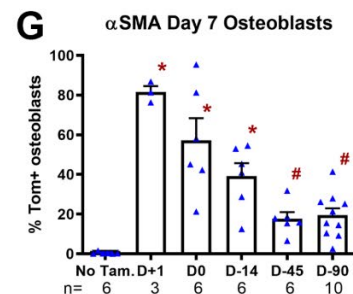
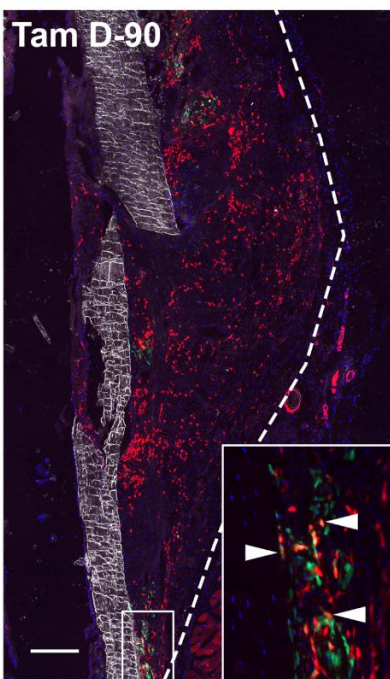
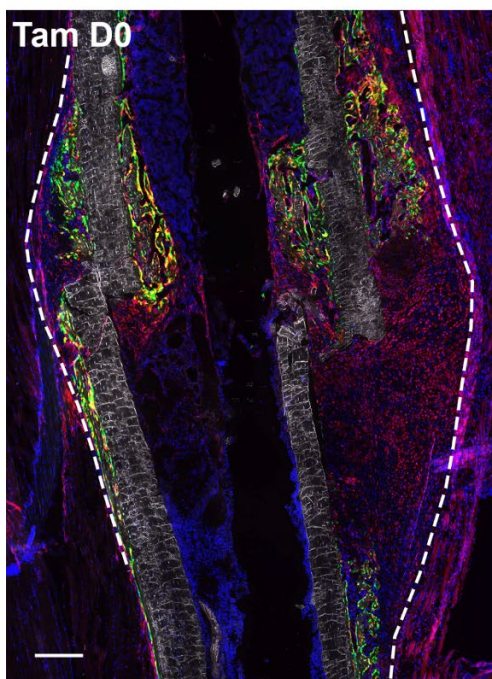
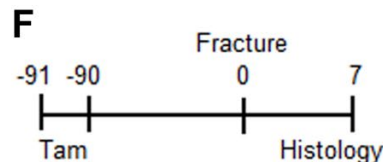
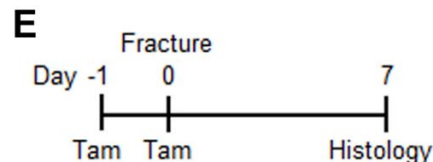
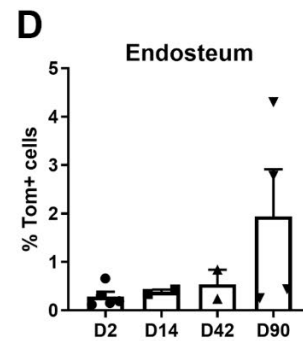
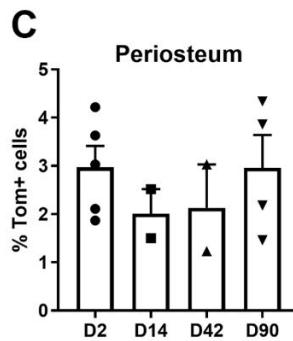
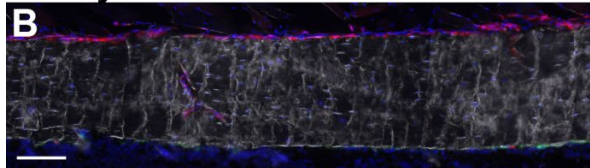


Figure 1: α SMA identifies long term progenitor cells in the periosteum

Representative images of tibia mid-shaft periosteum (A) 14 days or (B) 56 days after tamoxifen with the periosteal surface near the top and endosteal surface near the bottom of the image. Percentage of α SMA-labeled (Tom+) cells within the CD45- population at different time points in (C) periosteum and (D) endosteum as measured by flow cytometry (n=2-5). Fracture histology of representative day 7 tibial fracture calluses in different groups.

Experimental design is shown diagrammatically. (E) α SMA-labeled with tamoxifen (Tam) at day -1, 0; (F) α SMA-labeled with tamoxifen at day -91, -90; Quantification of α SMA-labeled cell contribution to Col2.3GFP+ osteoblasts in the fracture callus based on image analysis in (G) day 7 fracture callus and (H) day 14 fracture callus at different times after tamoxifen administration. (I) Quantification of α SMA-labeled cell contribution to Sox9+ chondrocytes in day 7 fracture callus. All images show mineralized bone by dark field (gray), and DAPI+ nuclei in blue. Scale bars are 100 μ m (A,B) or 250 μ m (E-F). In F, the boxed area is magnified and α SMA-labeled osteoblasts as quantified in G-H are indicated with arrowheads. Approximate callus area used for analysis is indicated by the dashed lines in E-F, cortical bone surface defines the inner boundary. * p<0.05 compared to no tamoxifen control with ANOVA followed by Dunnett's post test. # p<0.05 compared to tamoxifen day 0 group.

1st Supplement to figure 1

Tam at 4-5wk, 2 day chase

17 day chase

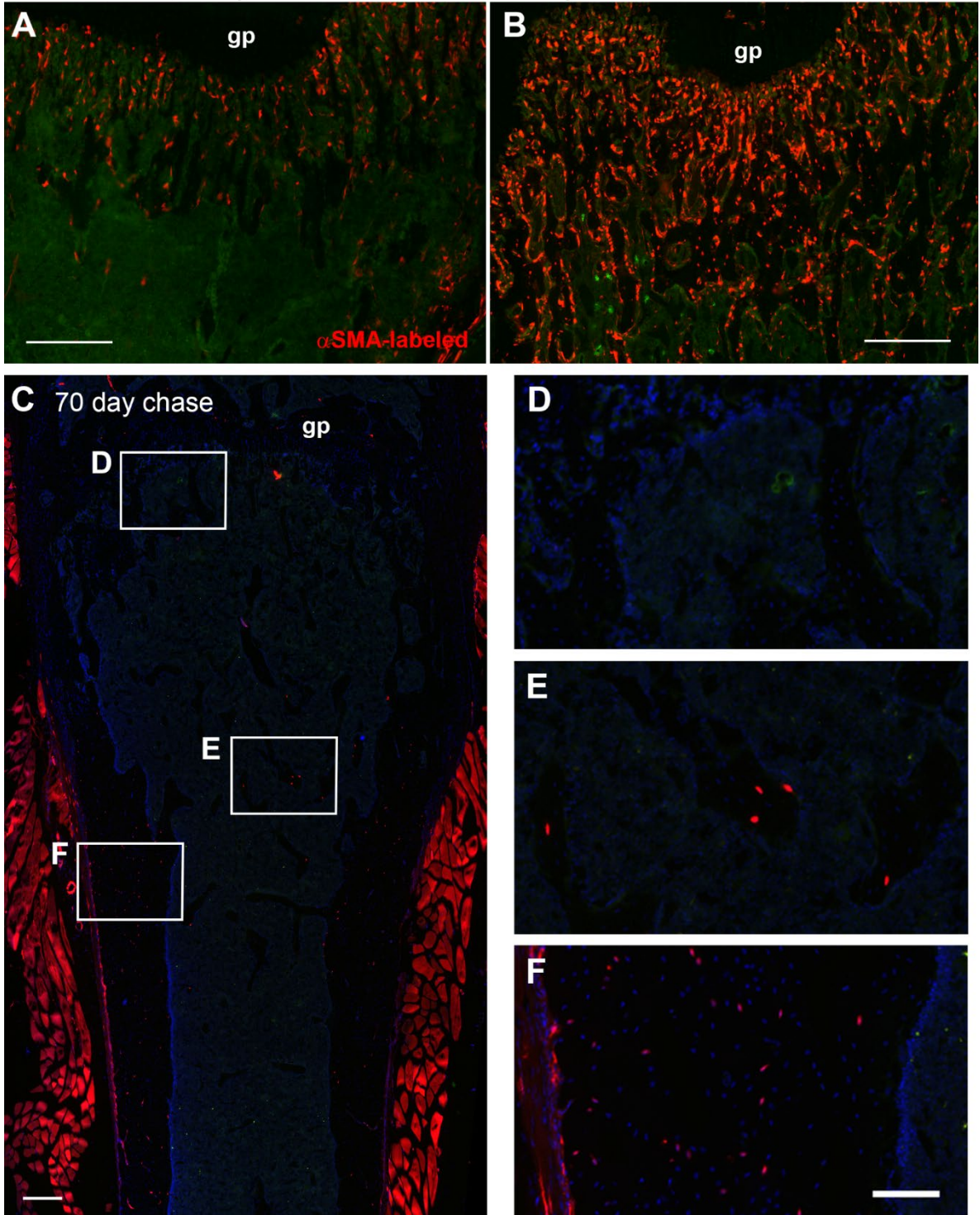
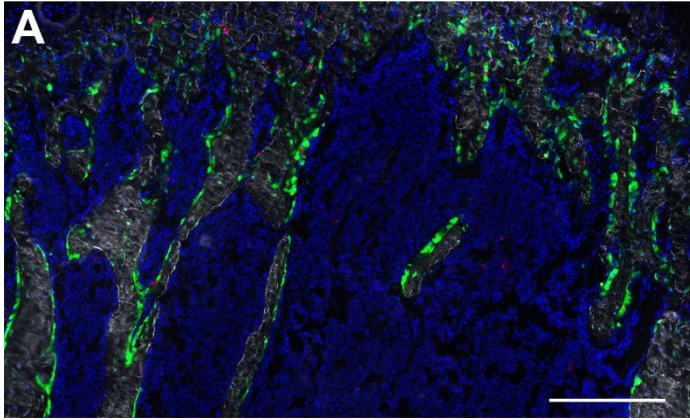


Figure 1 (Figure supplement 1): α SMA lineage tracing in the bone marrow compartment of juvenile mice.

Lineage tracing in the distal femur of α SMA^{CreER}/Ai9 mice at different time points after tamoxifen treatment at 4-5 weeks of age. (A) and (B) are replicates of data shown in Grcevic et al (22). Both show background signal in bone marrow in green, and (C-F) have DAPI staining in blue. After 17 days, many osteoblasts and osteocytes in trabeculae are labeled, but at day 70 magnified areas show few labeled cells are present in the primary spongiosa (D), but labeled osteocytes are retained in more proximal trabeculae (E) and in some cortical regions (F). Muscle is labeled due to targeting of some satellite cells by α SMA^{CreER} (43). Scale bars are 250µm (A-C) and 100µm (D-F). gp, growth plate.

2nd Supplement to Figure 1

Tam at 8 wk, 14 day chase



100 day chase

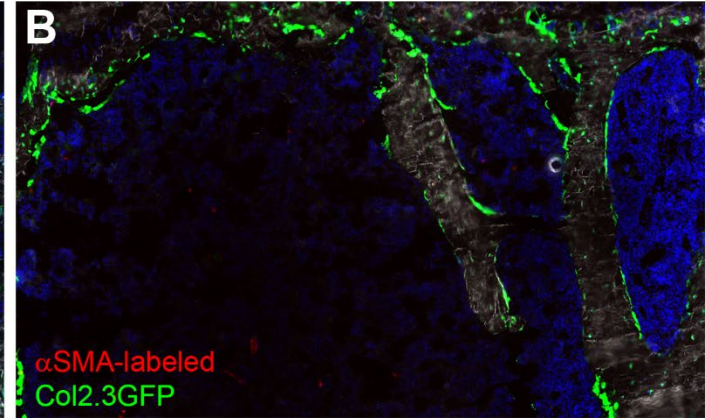


Figure 1 (Figure supplement 2): α SMA lineage tracing in the bone marrow compartment of adult mice. Proximal tibia trabecular histology in α SMA^{CreER}/Ai9/Col2.3GFP mice 14 days (A) and 100 days (B) after tamoxifen treatment during adulthood (at least 8 weeks of age). Note that there are few red cells, and almost no contribution to osteoblasts or osteocytes. Scale bars are 250 μ m. gp, growth plate.

Figure 1, figure supplement 3

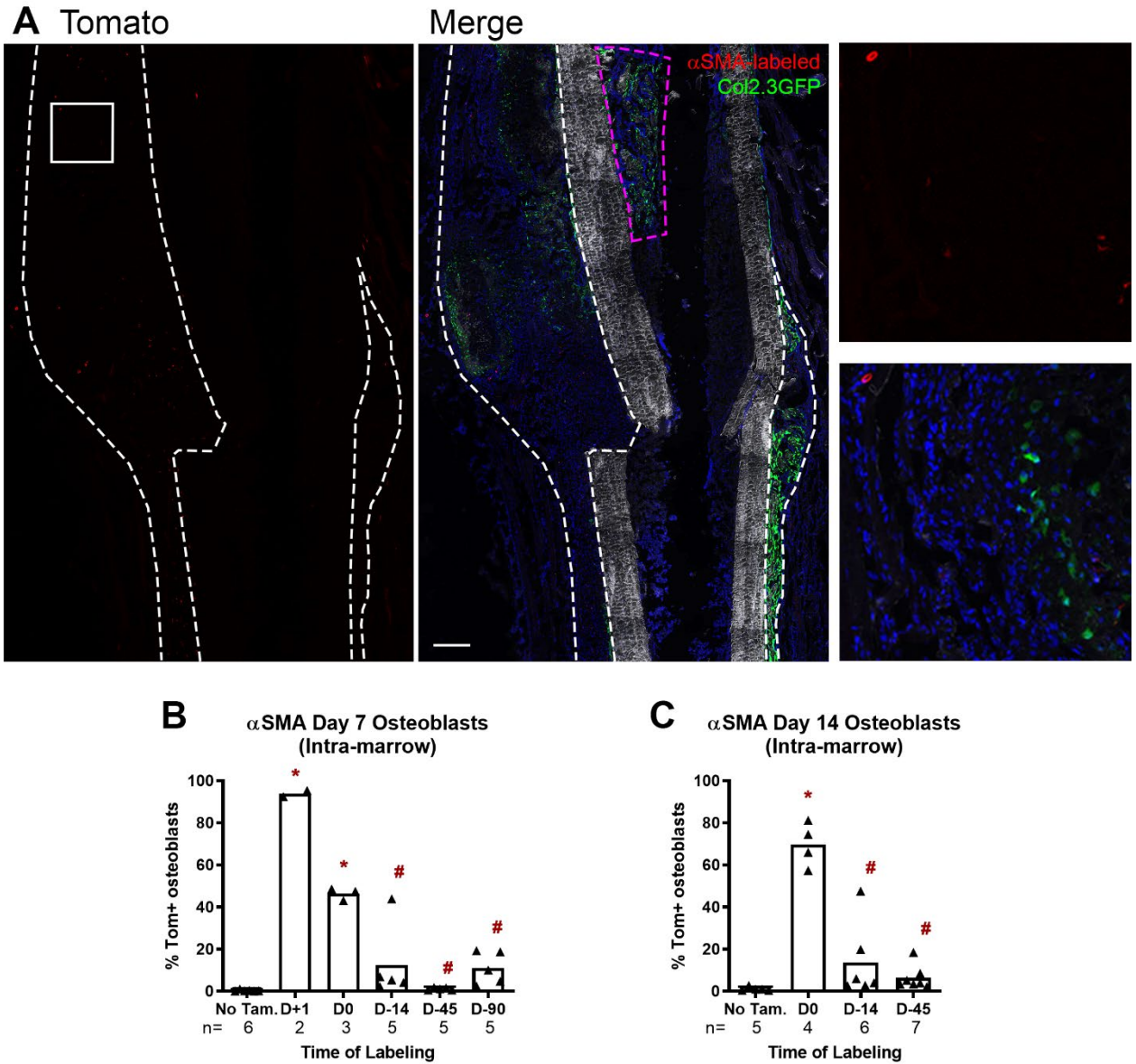


Figure 1 (Figure supplement 3): Minimal α SMACreER leakiness in fracture callus, and contribution to endosteal bone formation.

(A) Fracture histology of representative day 7 callus in an α SMACreER/Ai9/Col2.3GFP mouse never exposed to tamoxifen showing the red channel only and merged image. The magnified images show the boxed area. A small number of red cells are visible, however very few colocalize with Col2.3GFP. Images show mineralized bone by dark field (gray), and DAPI+ nuclei in blue. Callus area is outlined in white. Scale bar is 250 μ m. (B) Contribution of α SMA-labeled cells to new Col2.3GFP+ osteoblasts in the bone marrow compartment (as indicated by pink box in A) in day 7 fractures, and (C) in day 14 fractures. * $p < 0.05$ compared to no tamoxifen control with ANOVA followed by Dunnett's post test. # $p < 0.05$ compared to tamoxifen day 0 group using similar ANOVA.

Figure 2

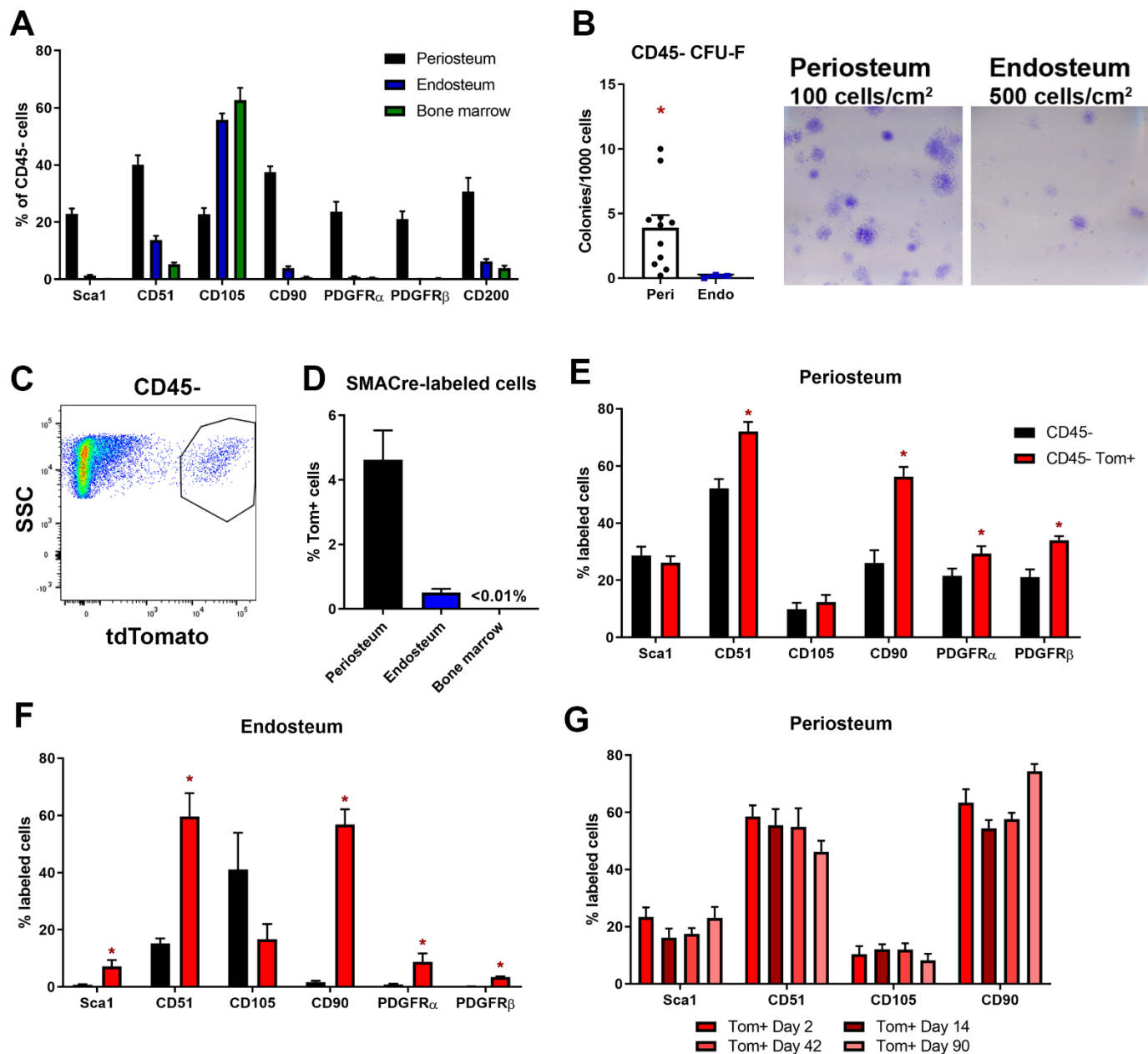


Figure 2: Mesenchymal stem cell markers are enriched in periosteum

Flow cytometry and cell sorting was used to evaluate marker expression in tissue from adult long bones. (A) Expression of cell surface markers in periosteum, endosteum and bone marrow samples as a percentage of the CD45/Ter119/CD31- fraction, n=4-46. Expression in periosteum is significantly different from both bone marrow and endosteum for all markers (2-way ANOVA with post test comparing cell types). (B) CFU-F formation in the total CD45/Ter119/CD31- fraction. (C) Representative flow plot showing gating of α SMA-labeled cells. (D) Proportion of α SMA-labeled cells 2-3 days after tamoxifen in different tissue compartments (n=17). Cell surface marker expression in the Tomato+ population 2-3 days after tamoxifen in (E) periosteum and (F) endosteum (n=4-17). (G) Cell surface profile of α SMA-labeled cells at different time points (n=2-7). * p<0.05 compared to CD45- population.

Figure 2, figure supplement 1

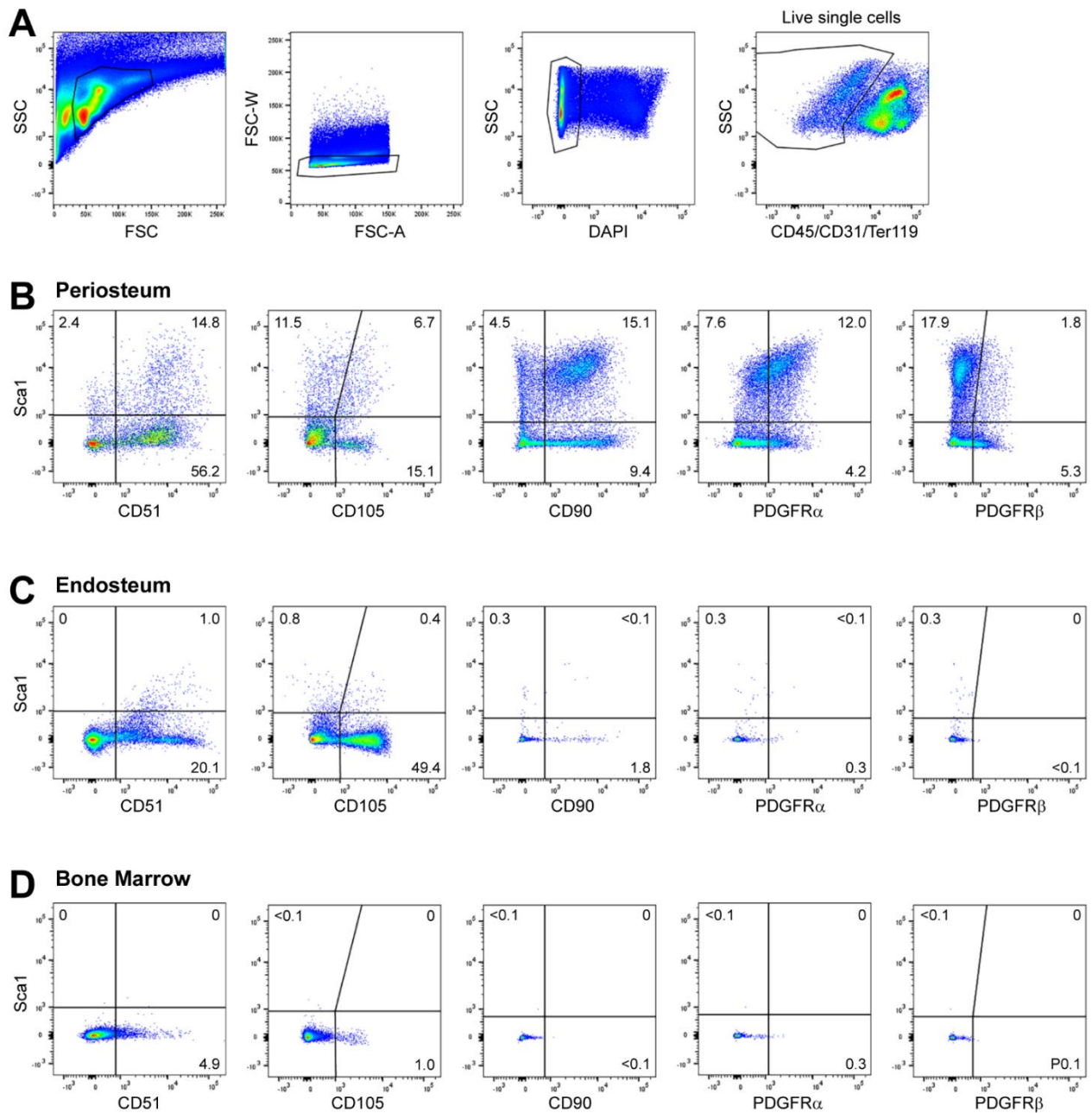


Figure 2 (Figure supplement 1): Flow cytometry plots of mesenchymal progenitor marker expression

Representative plots showing (A) the initial gating scheme to enable analysis of mesenchymal cell populations, and expression of indicated markers CD45/CD31/Ter119⁻ cells in (B) periosteum, (C) endosteum and (D) bone marrow of representative samples in relation to Sca1. Quadrant percentages are specific to the sample that is shown. The periosteum, endosteum and bone marrow samples in each column come from the same sample (obtained from 2 animals). FSC, forward scatter; SSC, side scatter.

Figure 2, figure supplement 2

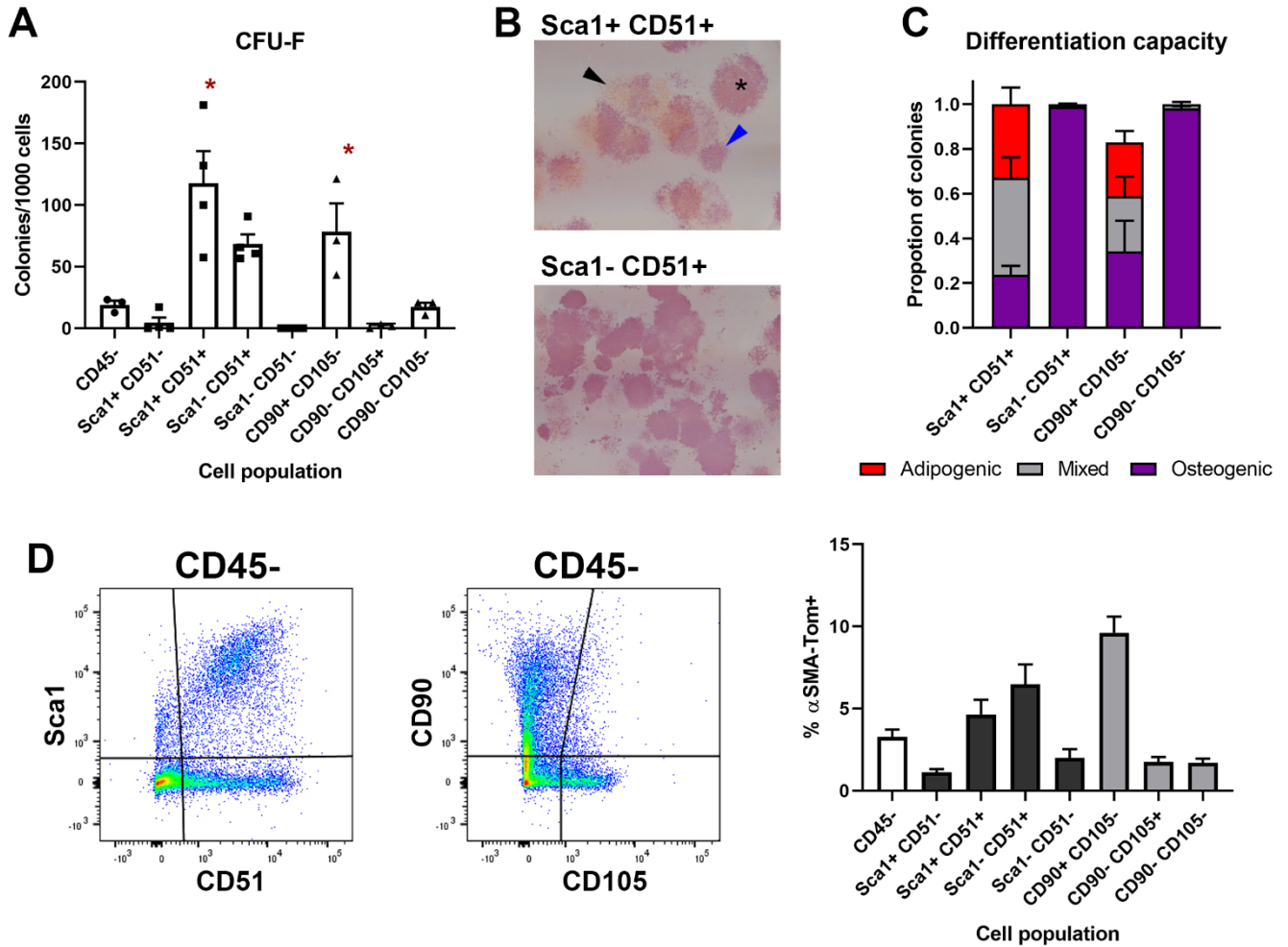


Figure 2 (Figure supplement 2): Sca1+CD51+ and CD90+ periosteal cells are enriched for multipotent progenitor cells

(A) CFU-F of different periosteal populations (n=3-4). * p<0.05 compared to total CD45- based on 1-way ANOVA with Dunnett's post test. (B) Differentiation potential of cell populations grown in mixed osteogenic adipogenic conditions. Pink is ALP stain, red is oil red O, colonies indicated show osteogenic only (blue arrowhead), adipogenic only (black arrowhead) and mixed (*) colonies. (C) Quantification of colony differentiation from different populations. (D) Flow plots indicating different populations sorted and analyzed and percentage of α SMA+ cells (tomato+ cells 2-3 days after tamoxifen injection) within each of the cell populations indicated (n=10-16).

Figure 3

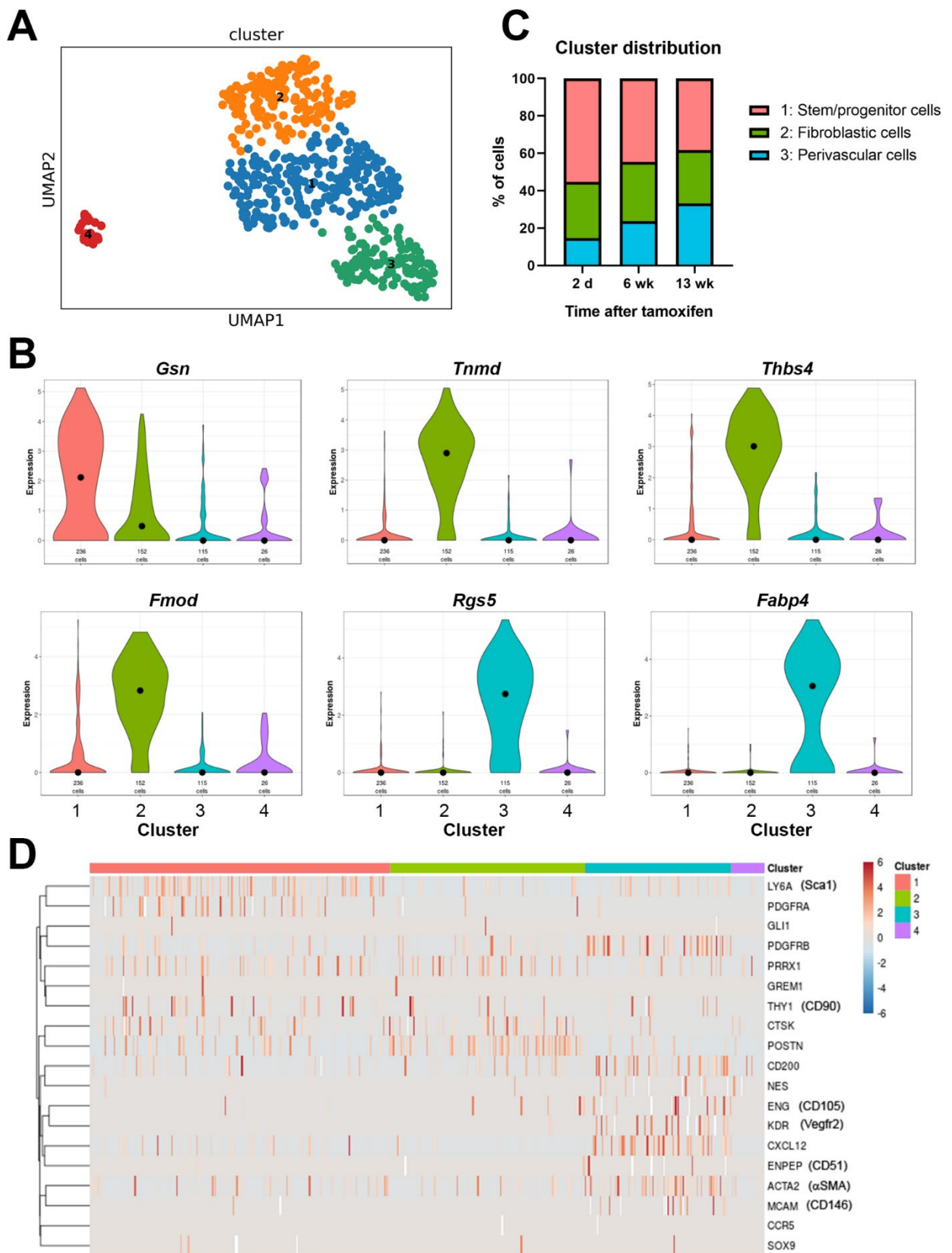


Figure 3: Single cell RNAseq analysis of α SMA-Tom⁺ cells

Plate-based RNAseq was performed on α SMA-Tom⁺ cells at up to 13 weeks after tamoxifen delivery. (A) UMAP cluster plot indicating four clusters. (B) Violin plots of top markers for clusters 1-3. (C) Distribution of cells in clusters 1-3 at different time points following tamoxifen. (D) Heat map of expression of putative MSC and periosteal progenitor markers.

Figure 3, figure supplement 1

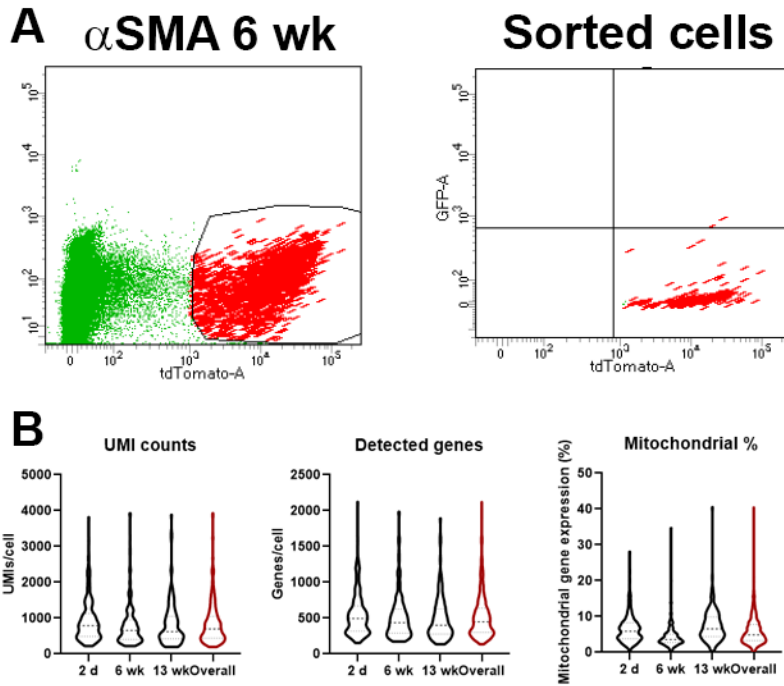
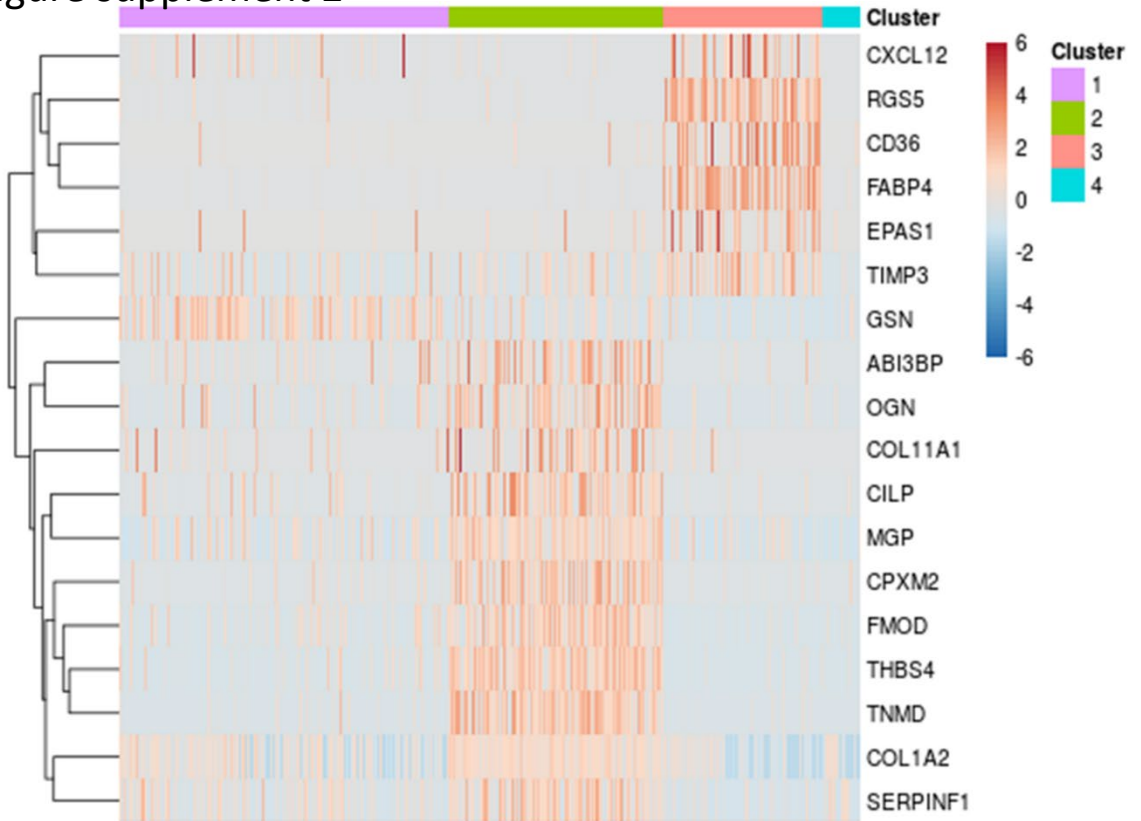


Figure 3 (Figure supplement 1): Quality control data for single cell RNAseq dataset

(A) Gating for cell sorting of the 6-week chase cells. (B) Violin plots showing summary data for unique molecular identifier (UMI) counts, number of genes detected, and proportion of mitochondrial transcripts within the dataset.

Figure 3, figure supplement 2

A



B

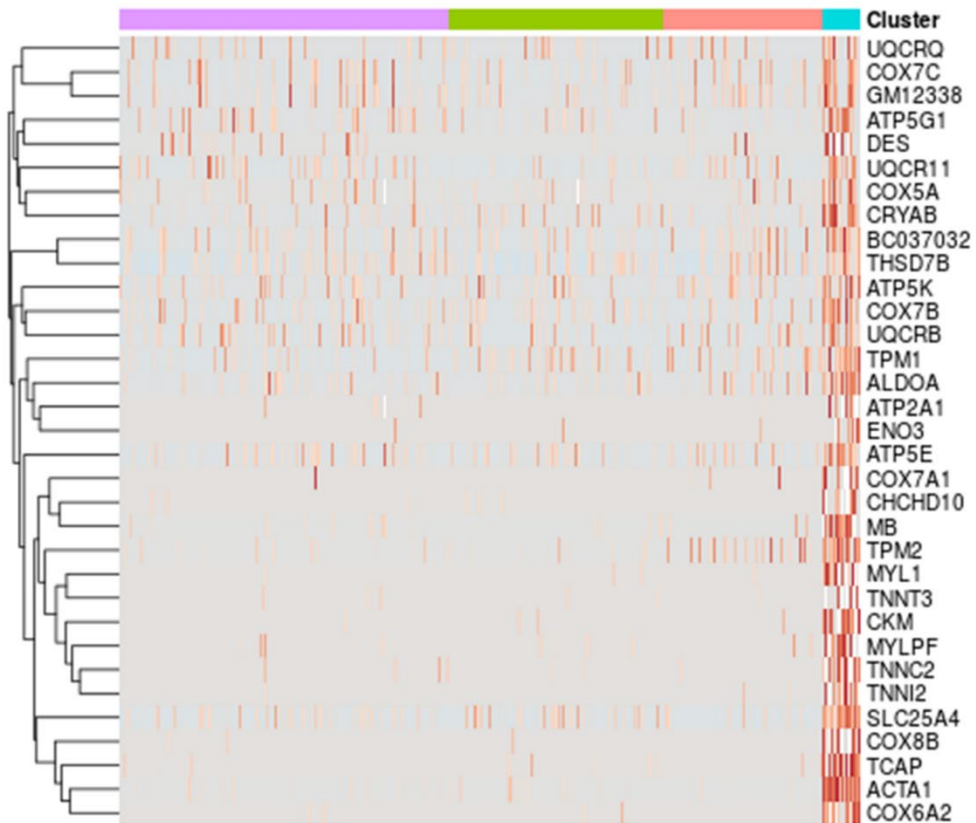


Figure 3 (Figure supplement 2): Heat maps of cluster markers

Heat map indicating expression of cluster markers with AUROC values >0.7 for, (A) clusters 1-3 which appear to be periosteal population, and (B) cluster 4 which show expression of skeletal muscle lineage genes.

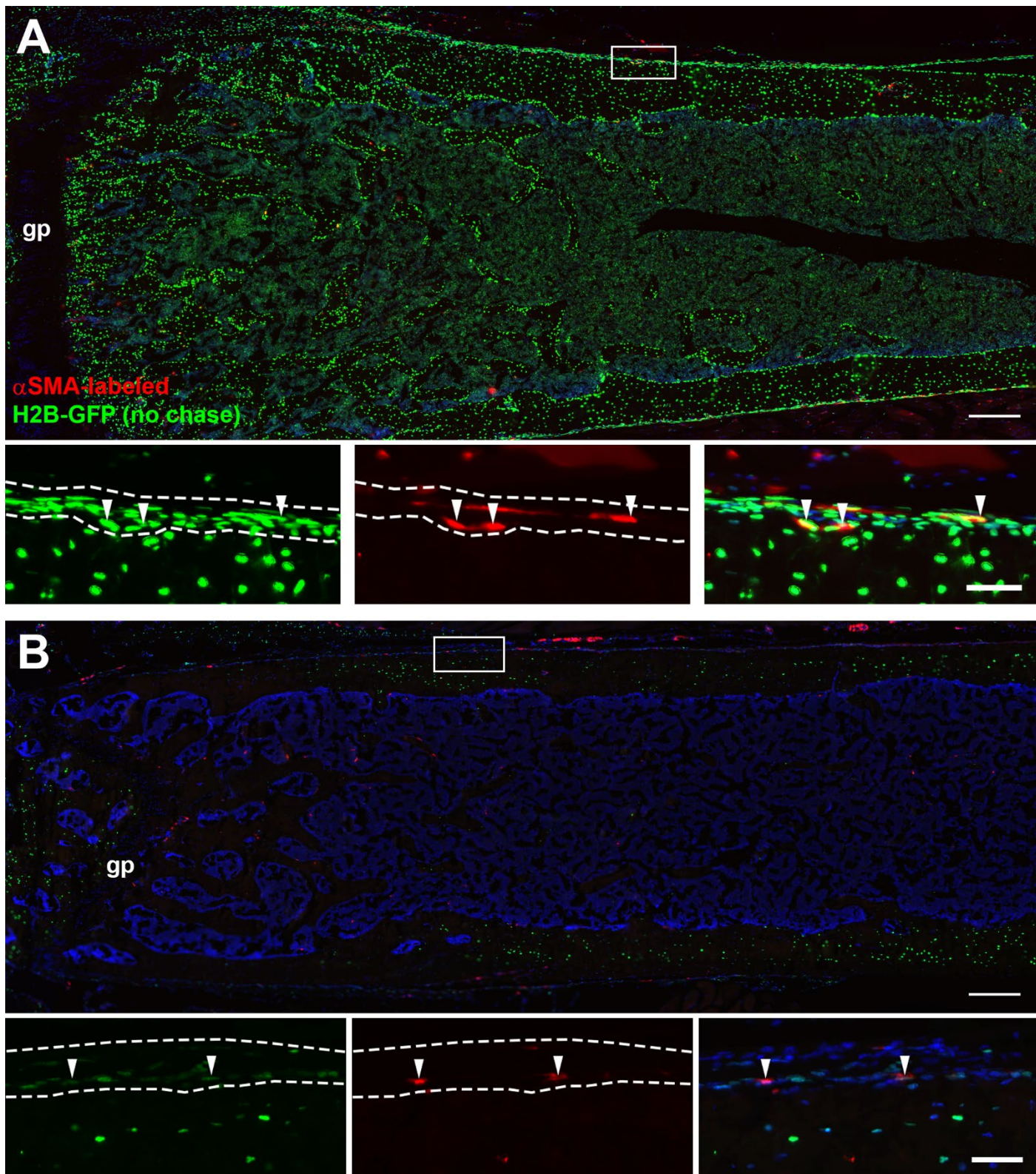


Figure 4 (Figure supplement 1): Histology of H2B-GFP/ α SMACreER/Ai9 femurs

(A) H2B-GFP expression in a distal femur following 5 weeks dox, and 2 days after tamoxifen. (B) H2B-GFP label-retaining cells after 13 weeks chase, tamoxifen was given at the time of dox withdrawal. Boxed areas are magnified. Arrowheads indicate GFP+ α SMA-Tom+ cells in the cambium layer of the periosteum. gp, growth plate. Scale bars are 250 μ m or 100 μ m (high magnification images).

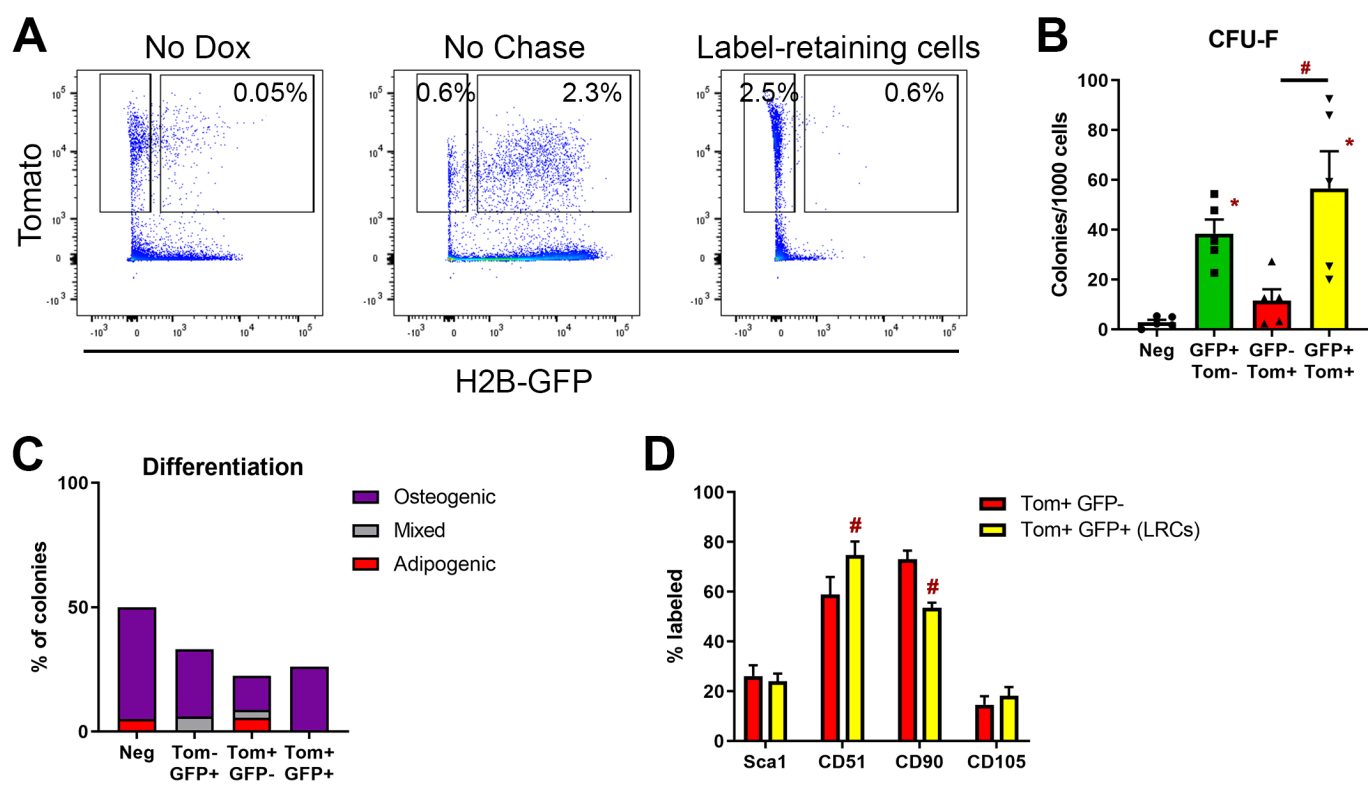


Figure 4 (Figure supplement 2): α SMA-labeled label-retaining cells are enriched for CFU-F
 (A) Representative flow plots showing identification of α SMA-labeled label-retaining cells. Values represent an average of n=3-10. (B) CFU-F formation and (C) differentiation of colonies under mixed osteogenic/adipogenic conditions of α SMA-labeled label-retaining cells and other subpopulations (n=5 for CFU-F, n=3 for differentiation). (D) Cell-surface marker expression in α SMA-labeled subpopulations. * p<0.05 compared to negative population, # p<0.05 compared to Tom+GFP- population.

SSC/BCSP Figure 5

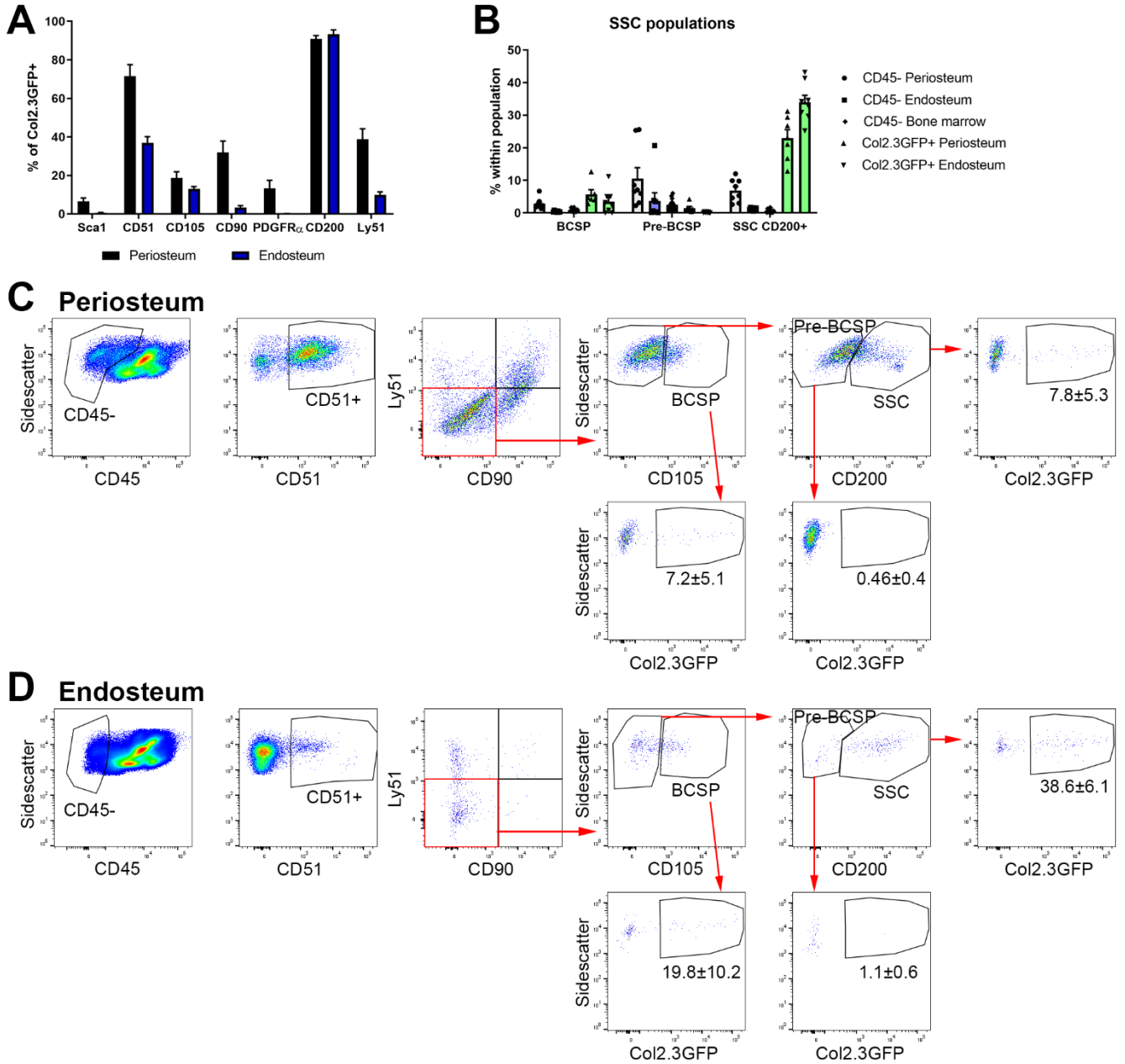


Figure 5: BCSP/SSC populations in adult bone contain mature osteoblasts

(A) Marker expression on Col2.3GFP+ osteoblasts, n=4-32. (B) Frequency of BCSP and SSC populations in different tissue compartments and populations (n=8-12). (C-D) Gating to identify bone, cartilage and stromal progenitors (BCSP), pre-BCSP and skeletal stem cells (SSC), and presence of Col2.3GFP+ osteoblasts as a major component of these populations in periosteum (C) and endosteum (D). Mean \pm standard deviation for % GFP+ cells are shown.

Figure 6

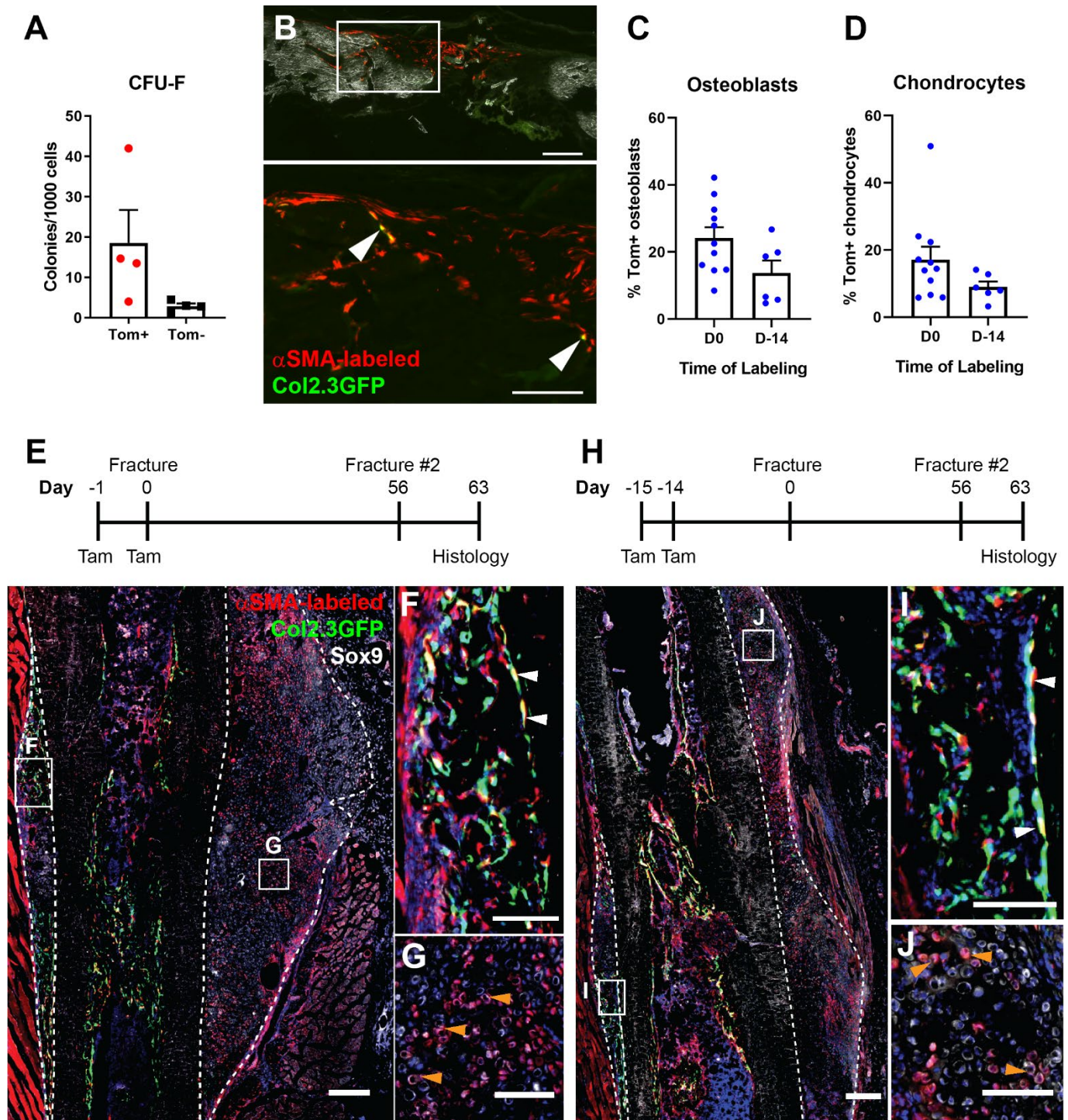


Figure 6: α SMA-labeled cells are transplantable self-renewing osteochondroprogenitors

(A) CFU-F frequency of periosteal α SMA-labeled cells sorted 2 days after tamoxifen. (B) Engraftment of transplanted α SMA-labeled cells in a calvarial defect 5 weeks after transplantation. Arrowheads indicate cells that are Col2.3GFP+. Quantification of α SMA-labeled cell contribution to (C) osteoblasts and (D) chondrocytes in day 7 secondary fracture calluses are shown. (E) Experimental design and fracture callus histology following a second tibia fracture in α SMACreER/Ai9/Col2.3GFP mice showing contribution of Tomato+ cells to callus tissue including osteoblasts (F) and Sox9+ chondrocytes (white) (G). (H-J) Histology of a similar secondary fracture where tamoxifen was given 14 days prior to the primary fracture. White arrowheads indicate α SMA-labeled Col2.3GFP+ osteoblasts, orange arrowheads indicate α SMA-labeled Sox9+ chondrocytes. DAPI stain is shown in blue. Approximate callus area used for analysis is indicated by the dashed lines in E and H. Scale bars indicate 250 μ m (low magnification) and 100 μ m (high magnification).

Figure 7

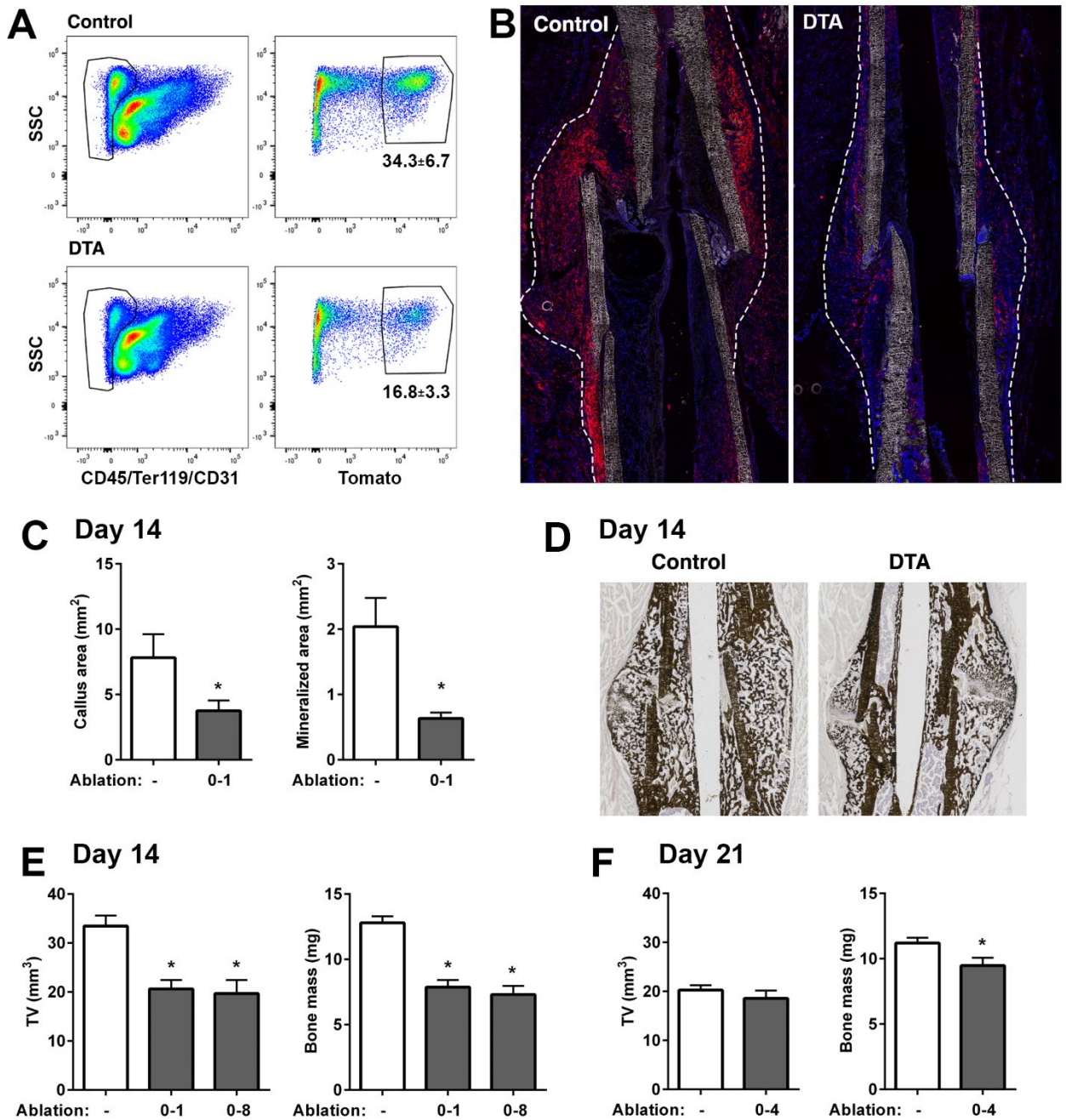


Figure 7: Ablation of α SMA+ cells impairs fracture healing.

(A) Flow cytometry of day 4 fracture callus from control α SMACreER/Ai9 mice and DTA animals (α SMACreER/Rosa-DTA/Ai9) indicating significantly fewer ($p < 0.01$) labeled cells in the ablation model (mean \pm SD shown), $n = 4$. (B) Representative histological sections from day 4 fracture callus in controls or with DTA-mediated ablation. The outline of the callus is indicated. (C) Histological analysis of callus area and mineralized area at day 14, and (D), representative images of von-Kossa staining. (E) MicroCT analysis of day 14 fracture callus in DTA- and DTA+ mice that had undergone two different tamoxifen regimens to ablate α SMA+ cells, day 0, 1 of fracture or day 0, 2, 4, 6, 8. Callus tissue volume and bone mass were measured. Cre- $n = 14$, 8 male 6 female; DTA D0-1 $n = 10$, 4M 6F; DTA D0-8 $n = 8$ 4M 4F). (F) MicroCT analysis of day 21 fracture callus in mice treated with tamoxifen on day 0, 2, and 4 ($n = 14-15$).

Figure 8

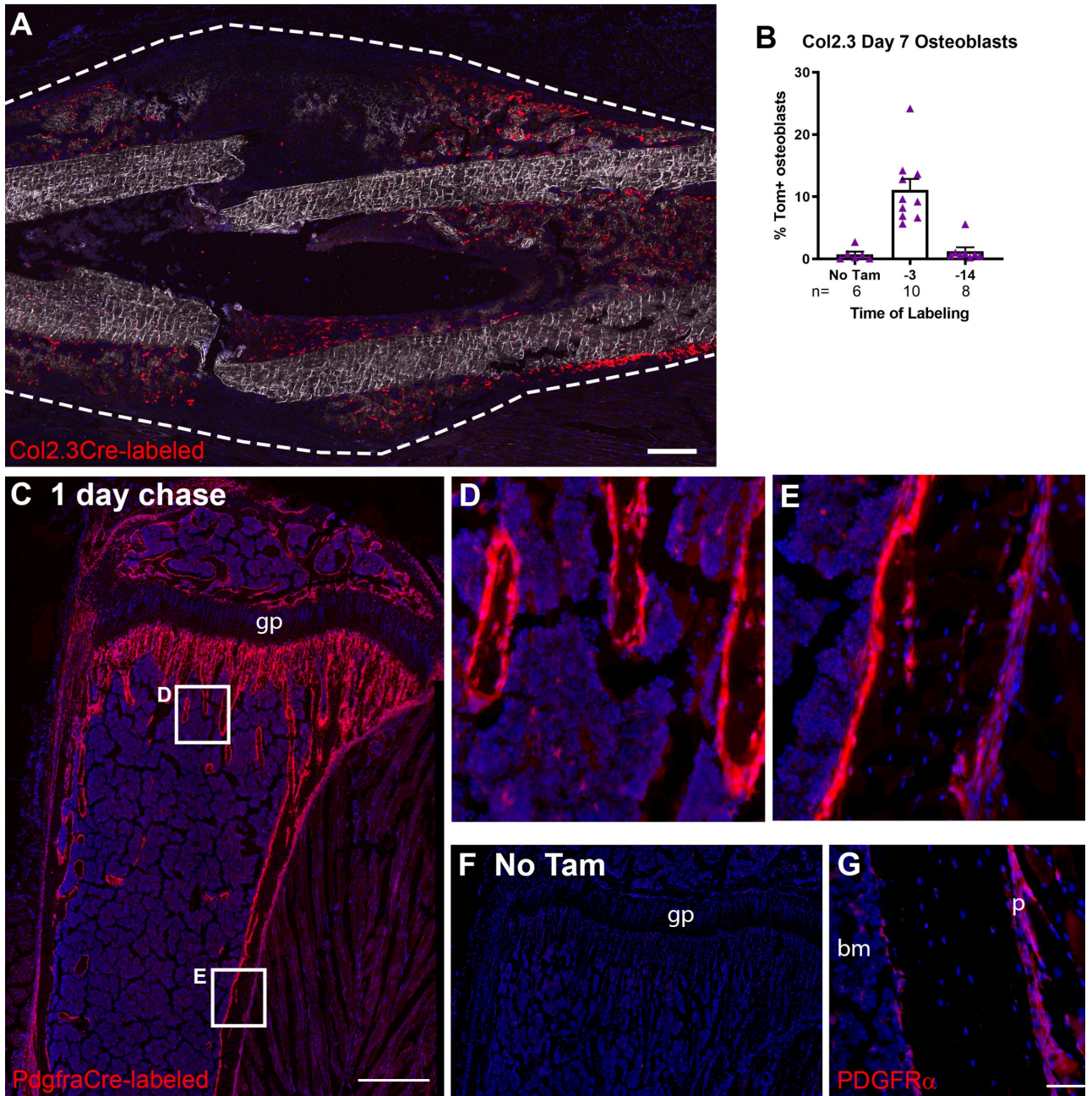


Figure 8: Contribution of mature osteoblasts to fracture healing and PDGFR α distribution

(A) Fracture histology of a representative day 7 tibial fracture callus from a Col2.3CreER/Ai9 treated with tamoxifen at days -4 and -3. Mineralized bone is shown by dark field (gray), and DAPI+ nuclei in blue. Scale bar is 250 μ m. (B) Quantification of Col2.3-labeled cell contribution to Osx+ osteoblasts. * P<0.05 based on ANOVA with Dunnett's posttest compared to no tamoxifen group. (C) Tibia histology of PdgfraCreER/Ai9 mice given three daily doses of tamoxifen and euthanized one day later. Scale bar is 200 μ m. Magnified areas of, (D) trabecular, and (E) cortical bone are shown. (F) Tibia histology of a PdgfraCreER/Ai9 mouse that had not been exposed to tamoxifen showing minimal leakiness of the CreER. Representative images of n=3 aged 5-8 weeks of age are shown. (G) PDGFR α immunostaining of bone. Scale bar is 50 μ m. bm, bone marrow; gp, growth plate; p, periosteum.