

### Consensus classes

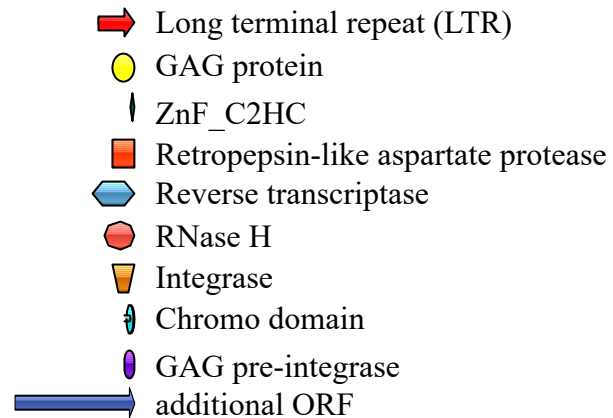
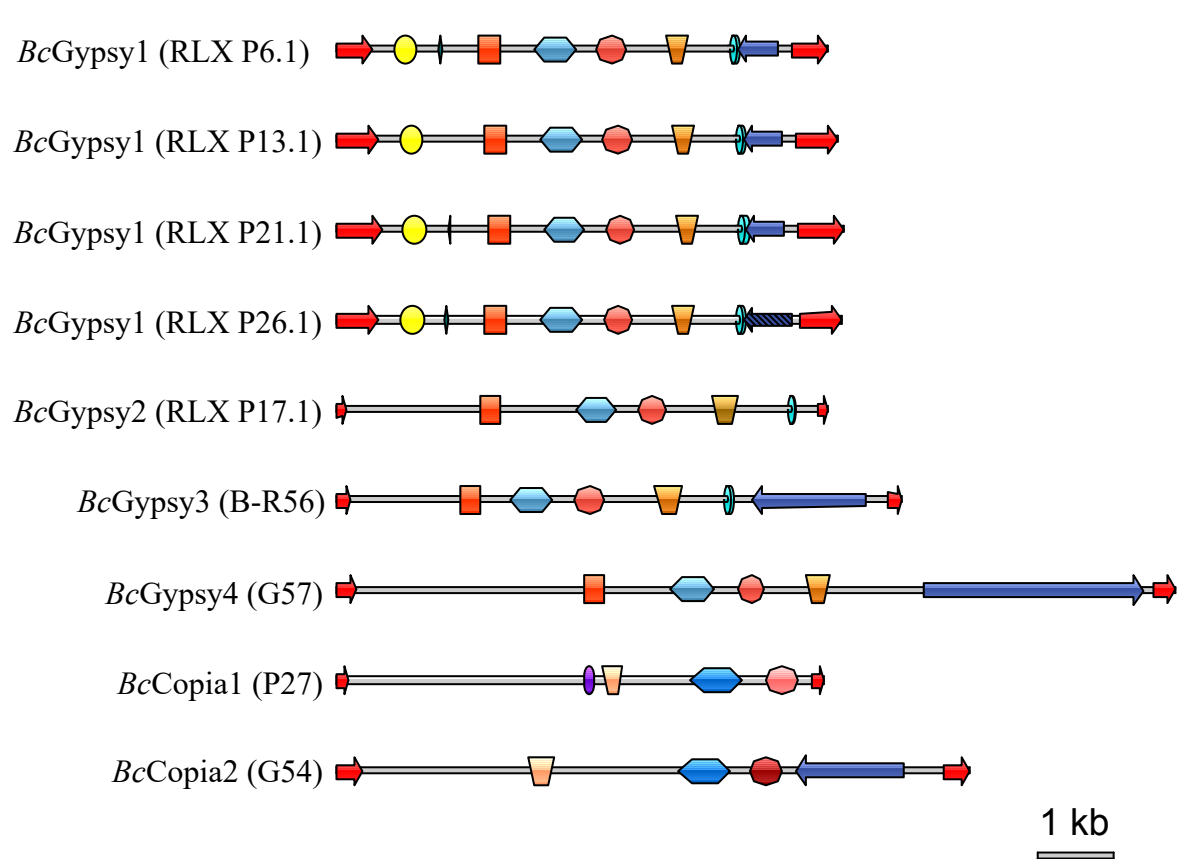
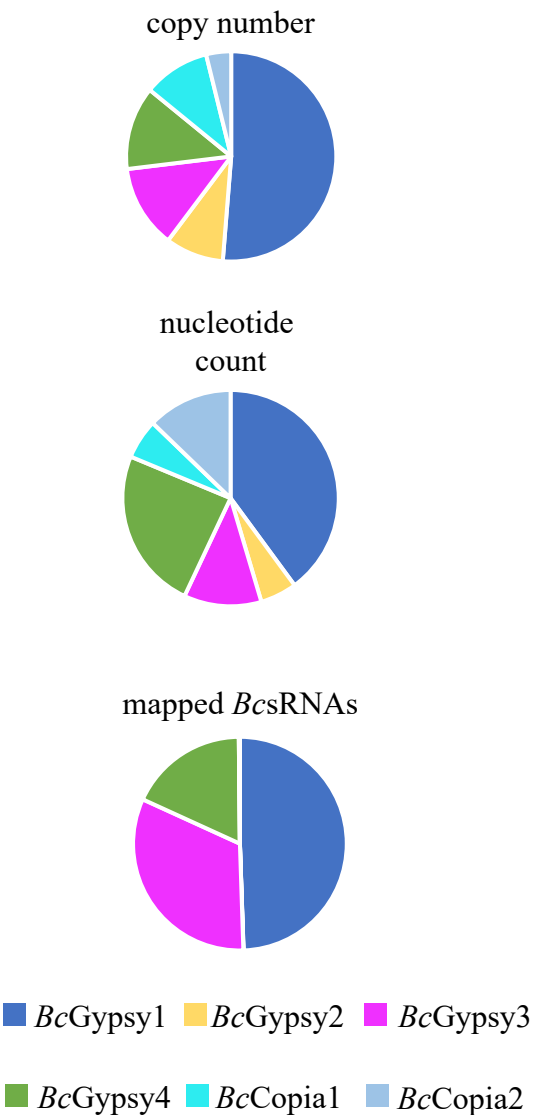
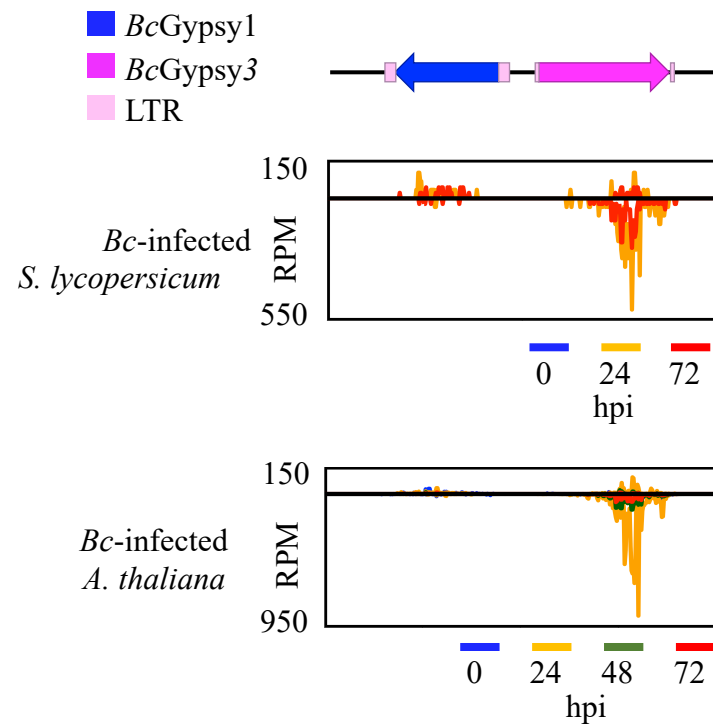


Figure S1

A



B



C

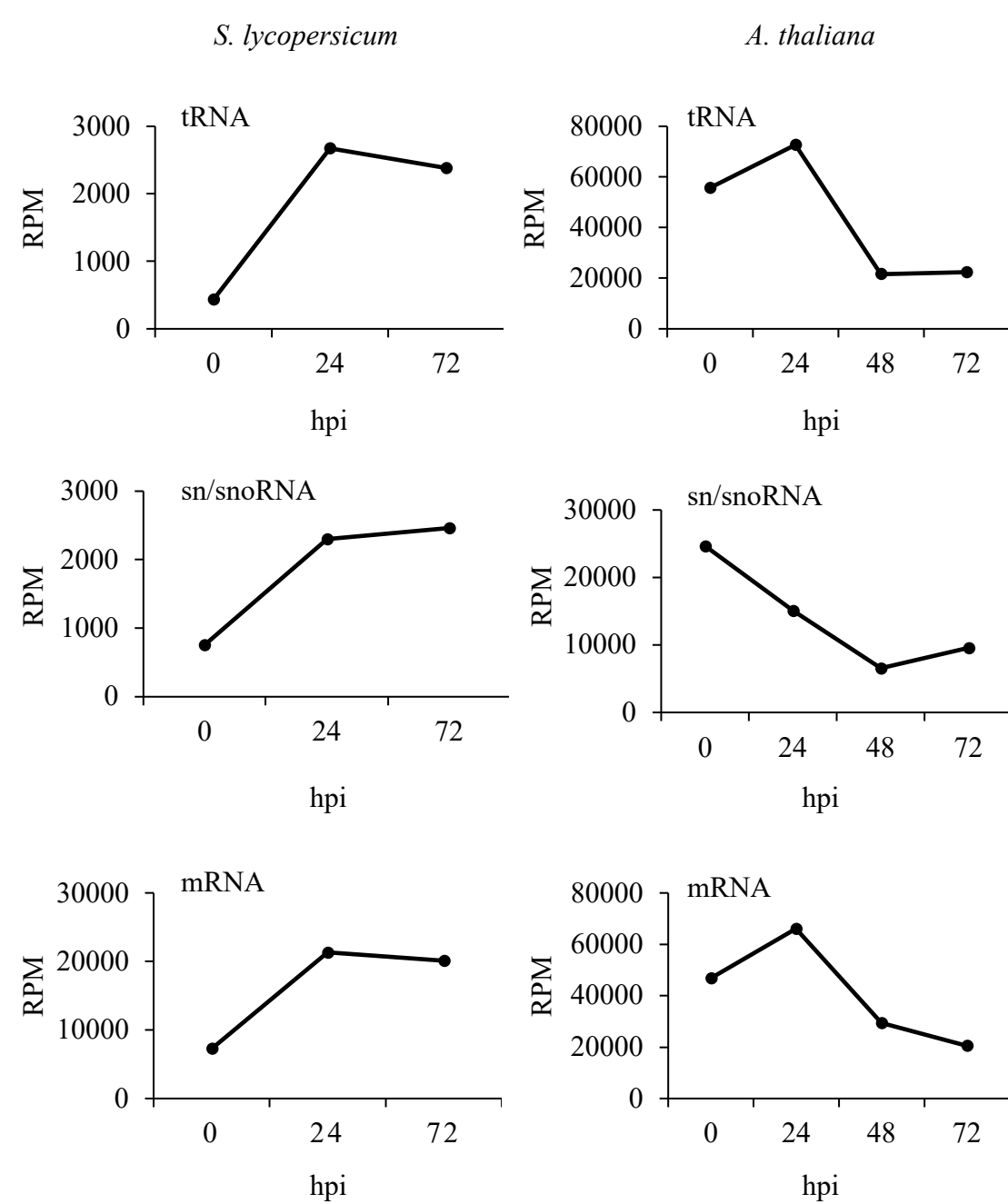
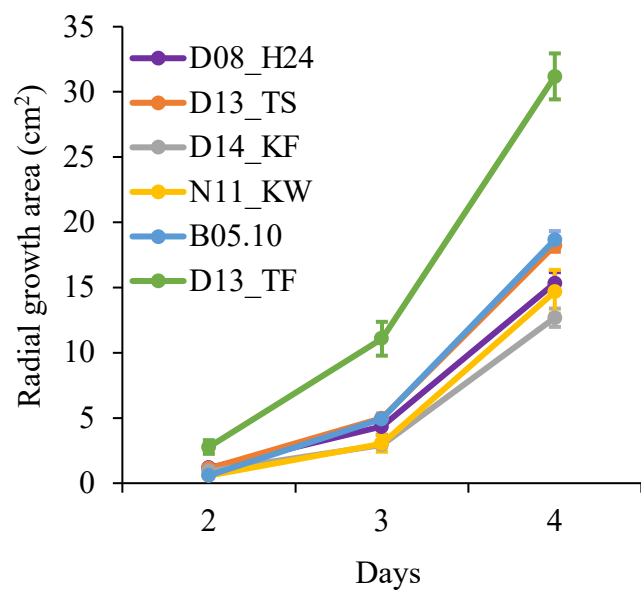


Figure S2

A



B

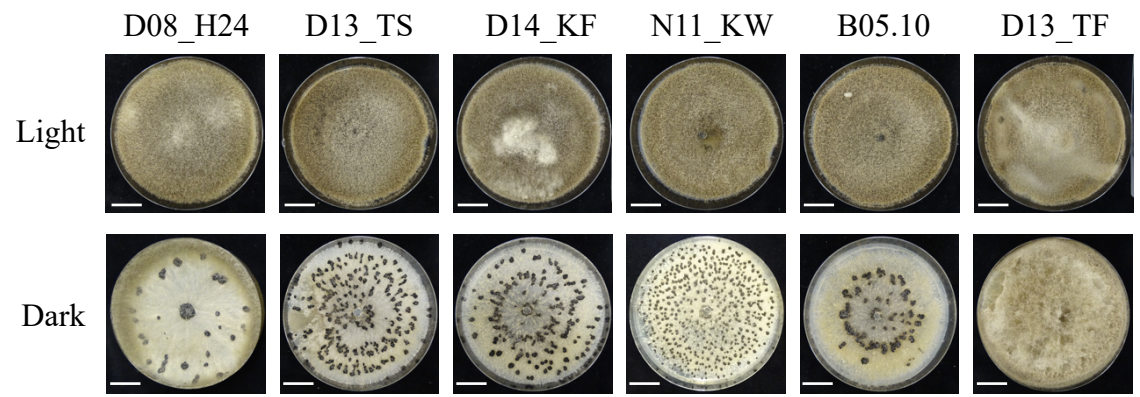


Figure S3

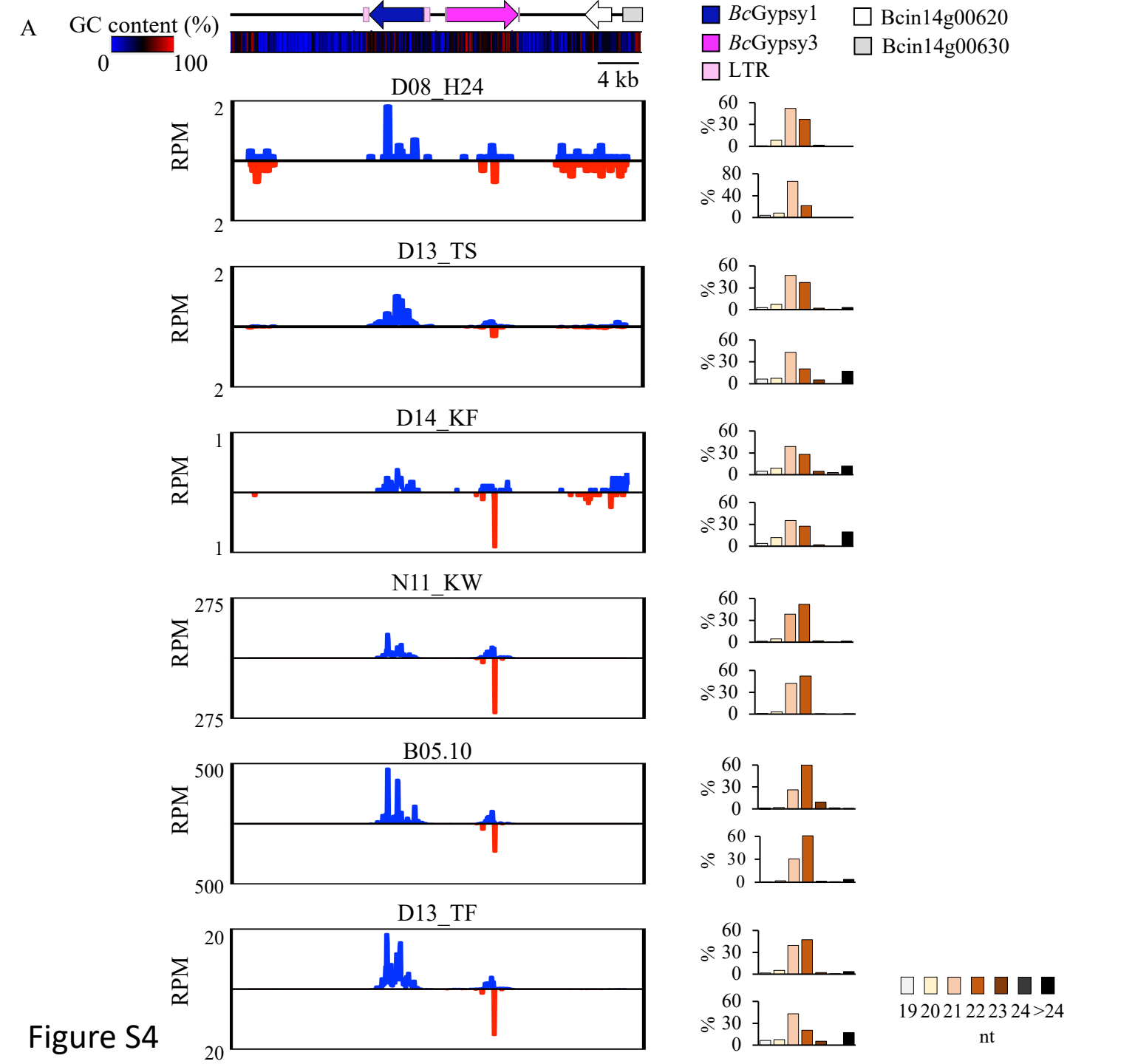


Figure S4



A

	B05.10	D08_H24	D14_KF
<i>BcGypsy1</i>	357,565 bp 0.84 %	92,081 bp 0.22 %	164,229 bp 0.38 %
<i>BcGypsy2</i>	49,141 bp 0.12 %	21,556 bp 0.05 %	64,674 bp 0.15 %
<i>BcGypsy3</i>	103,916 bp 0.24 %	7,952 bp 0.02 %	37,056 bp 0.09 %
<i>BcGypsy4</i>	217,377 bp 0.51 %	45,201 bp 0.11 %	77,969 bp 0.18 %
<i>BcCopia1</i>	53,275 bp 0.13 %	31,145 bp 0.07 %	7,152 bp 0.02 %
<i>BcCopia2</i>	114,550 bp 0.27 %	22,194 bp 0.05 %	70,416 bp 0.16 %
<b>Total coverage</b>	<b>895,824 bp</b> <b>2.10 %</b>	<b>220,129 bp</b> <b>0.52 %</b>	<b>421,496 bp</b> <b>0.99 %</b>

B

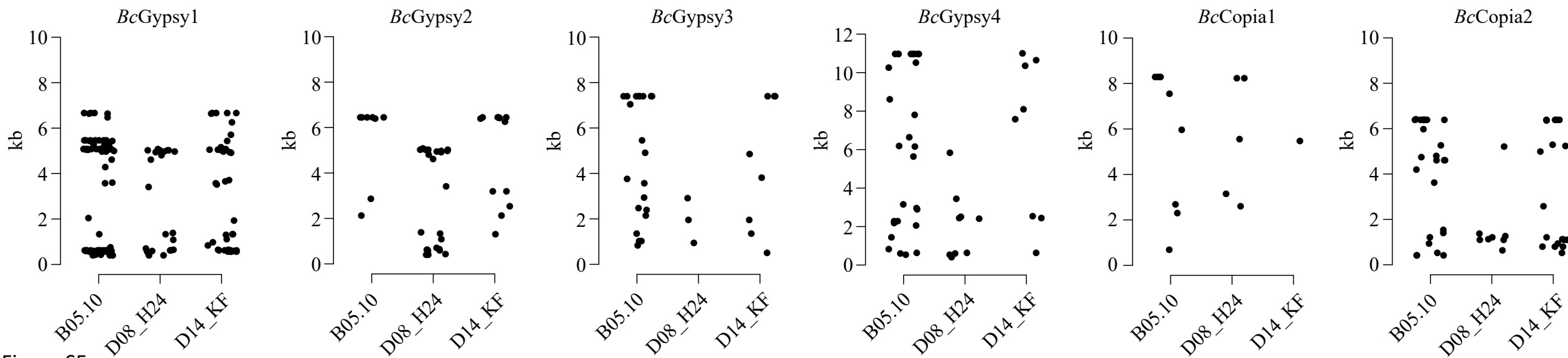


Figure S5

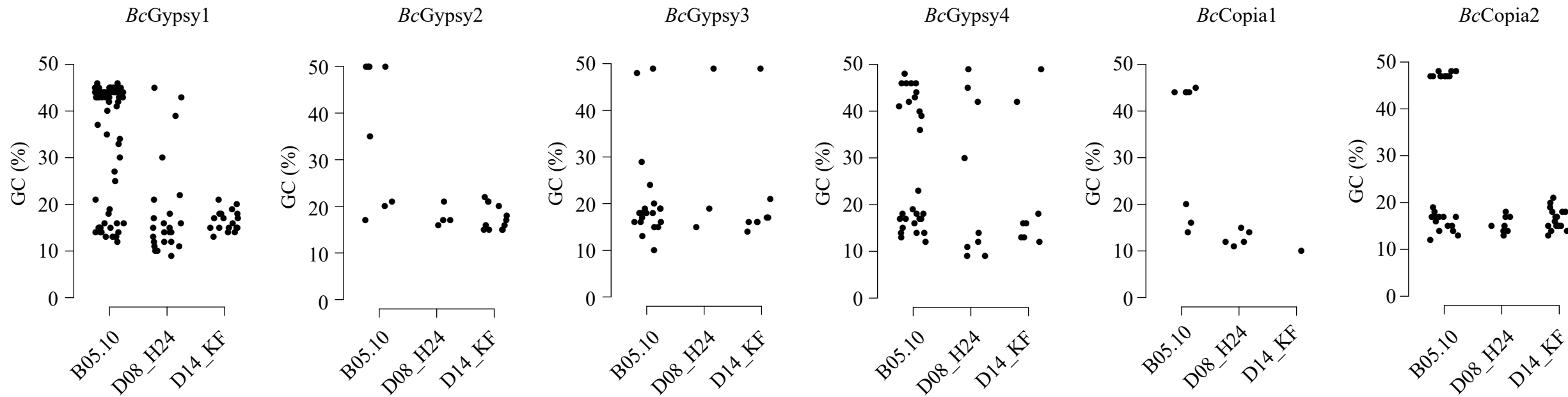
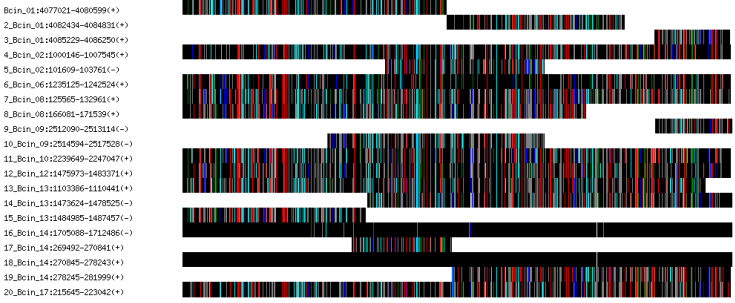


Figure S6

B05.10

D08\_H24

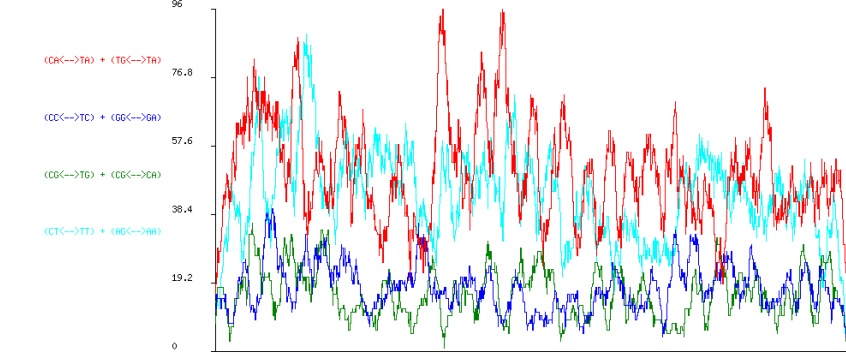
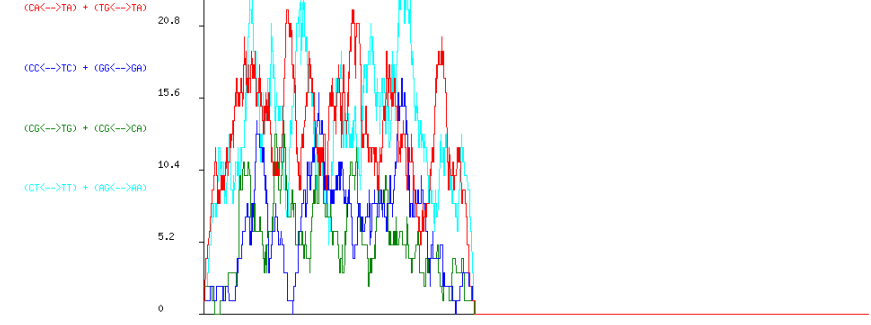
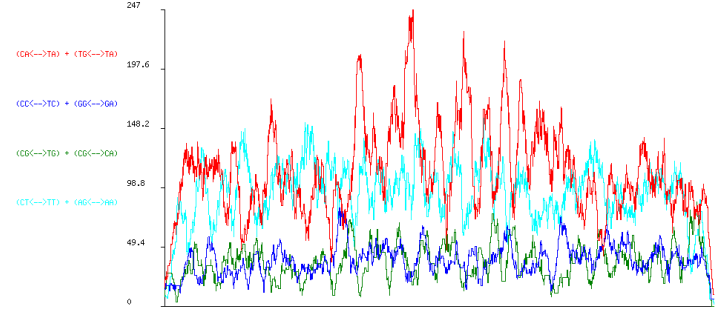
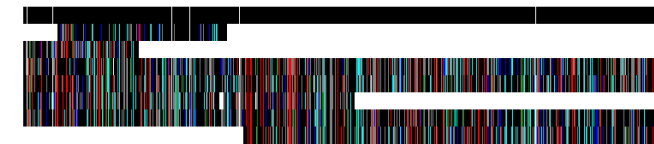
D14\_KF



Boty3\_GCr\_ichest\_fa  
 2\_ctg9\_D08:24977-26934(-)  
 3\_ctg9\_D08:585395-588313(+)



Boty3\_GCr\_ichest\_fa  
 2\_ctg10\_D14:51854-53812(-)  
 3\_ctg15\_D14:8232-9577(-)  
 4\_ctg17\_D14:363342-370734(-)  
 5\_ctg1\_D14:3218547-322933(+)  
 6\_ctg3\_D14:10148-13958(-)  
 7\_ctg8\_D14:2159726-2167132(-)  
 8\_ctg9\_D14:2523877-2528719(+)



CA<->TA / TG<->TA

CC<->TC / GG<->GA

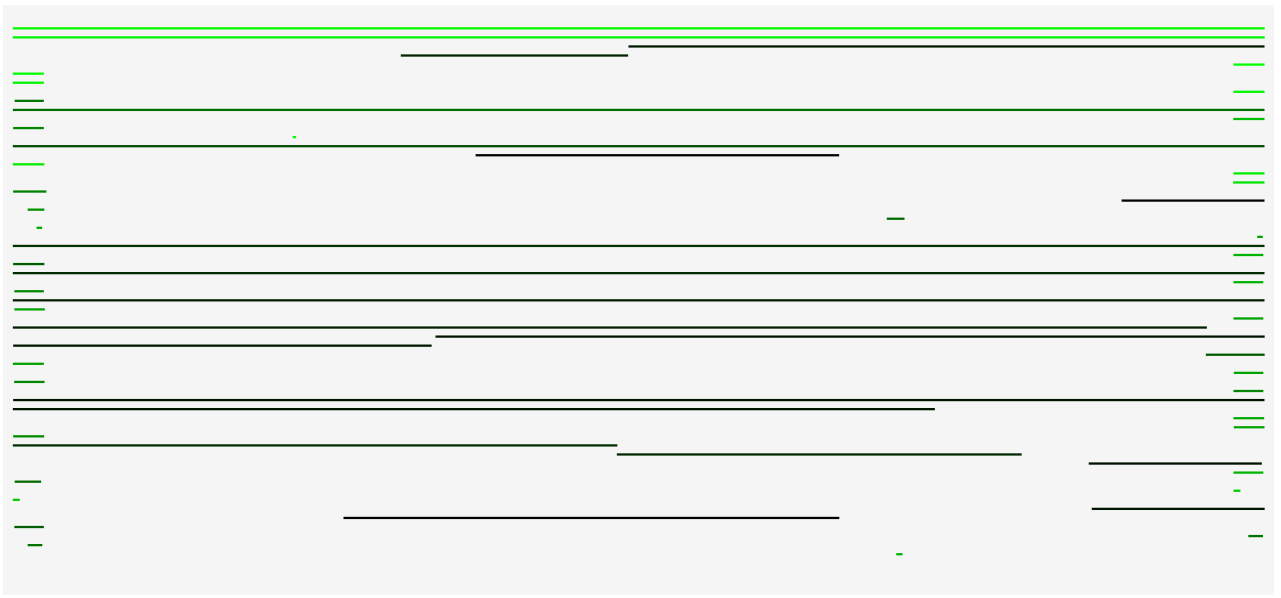
CG<->TG / CG<->CA

CT<->TT / AG<->AA

Figure S7



B05.10



D08\_H24



Figure S8

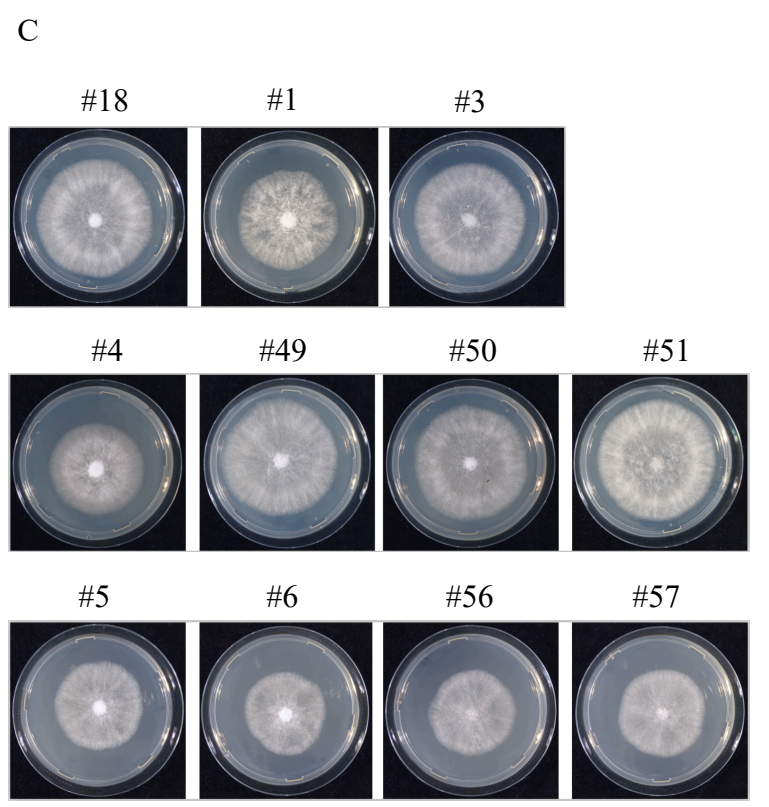
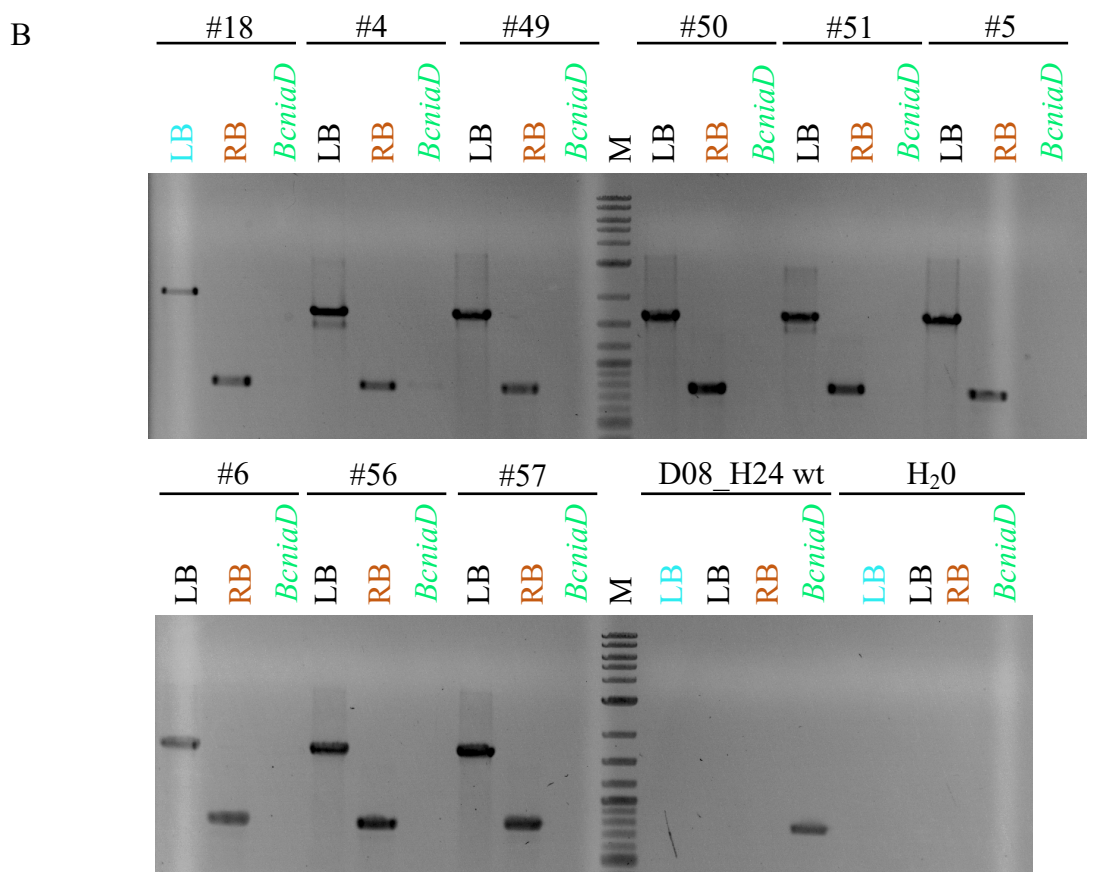
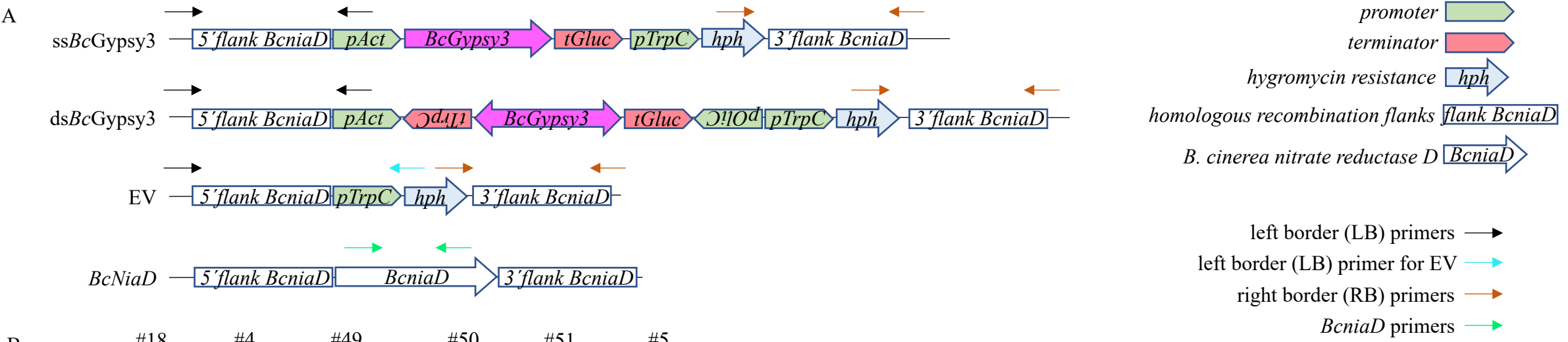


Figure S9

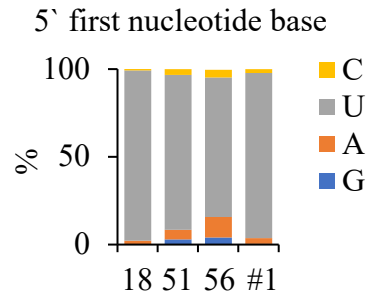
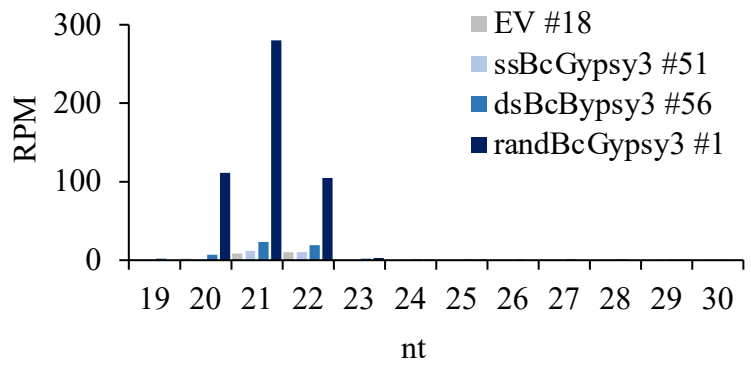


Figure S10



*B. cinerea*

mock

B05.10

18 48

18 48

hpi

<i>AT1G56090</i>	1	1	0.7	0.8
<i>AT3G01150</i>	1	1	0.9	0.9
<i>AT1G08465</i>	n.d.	n.d.	n.d.	n.d.
<i>AT4G12830</i>	1	1	0.7	0.5
<i>AT1G72430</i>	1	1	0.6	0.5
<i>AT1G52870</i>	1	1	0.7	0.6
<i>AT1G47128</i>	1	1	0.8	0.3
<i>AT4G35090</i>	1	1	0.7	0.2
<i>AT1G77060</i>	1	1	0.7	0.5
<i>AT1G10170</i>	1	1	0.7	0.7
<i>AT1G08050</i>	1	1	3.5	10.9
<i>AT1G17380</i>	1	1	1.1	1.9
<i>AT2G43150</i>	1	1	1	1.5
<i>AT3G10985</i>	1	1	1.3	1.4
<i>AT4G24350</i>	1	1	4.8	3.4

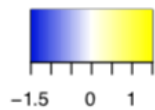


Figure S12