

Supplementary information

Table Legends

Table S1 Flow cytometry antibody panel used to surface and intracellular stain infant whole blood to characterize T cells.

Table S2 Demographic characteristic of HIV infected-exposed and HIV uninfected-unexposed mother-infant pairs

Figure Legends

Figure S1 Flow cytometry gating strategy to identify T regulatory and Th17 cells.

Figure S2 Ontological changes of CD4+ cells in HIV-exposed uninfected (HEU) and HIV-unexposed uninfected (HUU) infants. A) Th17 and B) Treg cells.

Figure S3 Plasma analytes measure in HIV-exposed uninfected infants (iHEU) and HIV-unexposed uninfected infants (iHUU). A) Comparisons of iFABP concentrations between iHEU and iHUU measured at 7 and 15 weeks. B) Chemokine and cytokine concentrations measured at birth and 36 weeks of age.

Figure S4 HIV exposure alters transcriptomic profile of gut homing Treg cells. A) Flow plot showing sorting of $\alpha 4\beta 7^-$ and $\alpha 4\beta 7^+$ Treg cells. B) NMDS plots showing Bray Curtis distances between infant samples.

Table S1 Flow cytometry antibody panel used to surface and intracellular stain infant whole blood to characterize T cells.

Antibody	Clone	Supplier
CD3 Apc-Cy7	UCHTI	Biolegend
CD4 AlexaFluor 700	SK3	Biolegend
CD8 BV570	RPA-T8	Biolegend
CD127 PE-CF594	hIL-7R-M21	BD
CD25 PE-Cy7	2A3	BD
Foxp3 AlexaFluor 647	2594/C7	BD
CD39 BV786	Tu66	BD
TIGIT FITC	MBSA43	eBioscience
CCR7 PerCP-Cy5.5	G043H7	Biolegend
CCR6 BV711	G034E3	eBioscience
CCR4 BV605	L291H4	Biolegend
CD161 PE-Cy5	DX12	BD
α 4 β 7 PE	A4B7R1	NIH AIDS reagents
FACS sorting		
CD3 FITC	OKT3	Biolegend

Table S2 Demographic characteristic of HIV infected-exposed and HIV uninfected-unexposed mother-infant pairs

Demographics	HUU (n=16)	HEU (n=20)	P value
Median maternal age at delivery, years (range)	26 (19-36)	27 (19-39)	0.49
Median gestational age, weeks (range)	39 (37-41)	39 (37-41)	0.89
Median maternal CD4 count cells/ μ L (IQR)	-	429.5 (344.5-516.50)	
Initiating ART, n (%)		10 (50)	
Infant			
Median birth weight, kg (IQR)	3.0 (2.9-3.3)	3.3 (2.9-3.5)	0.31
Gender, female (%)	9 (56.3)	11 (55.0%)	0.94
Exclusively breastfeeding			
7 weeks, n (%)	9 (56.3)	10 (50.0)	
15 weeks, n (%)	6 (37.5)	6 (30.0)	
36 weeks, n (%)	0 (0.0)	0 (0.0)	

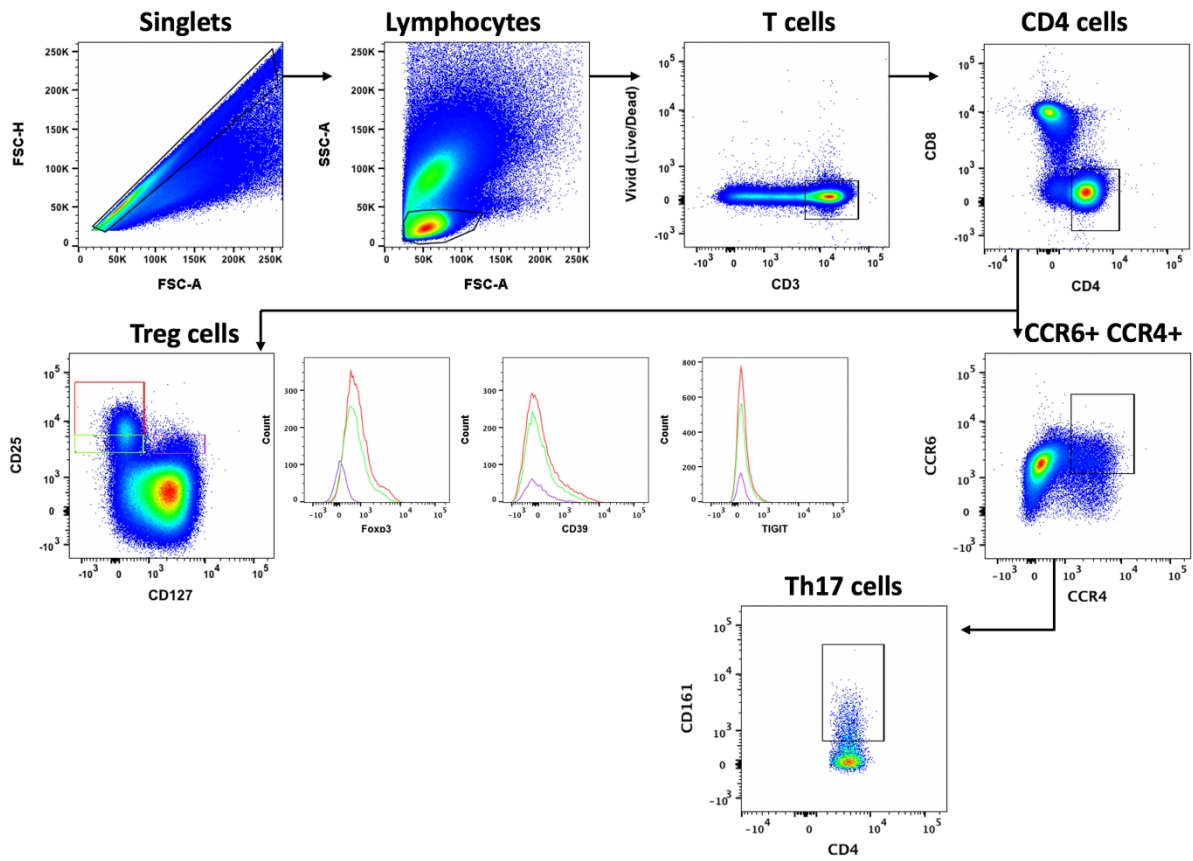


Figure S1 Flow cytometry gating strategy to identify T regulatory and Th17 cells.

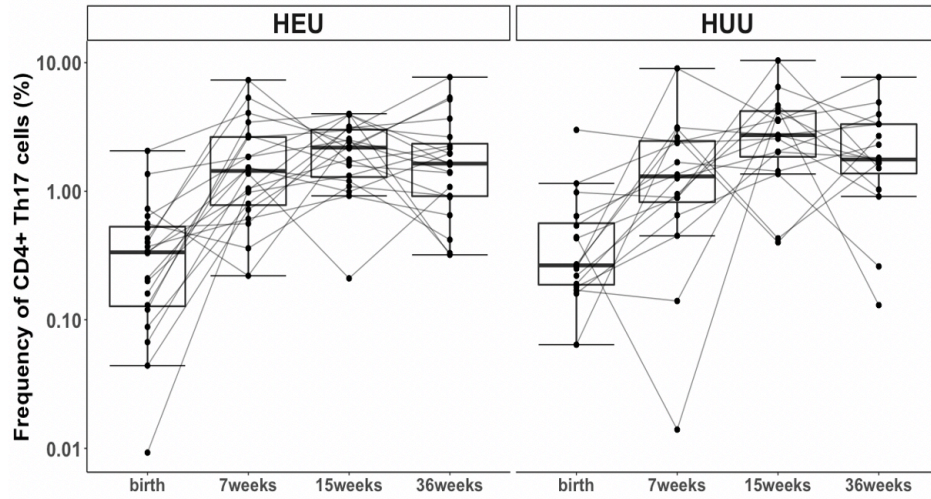
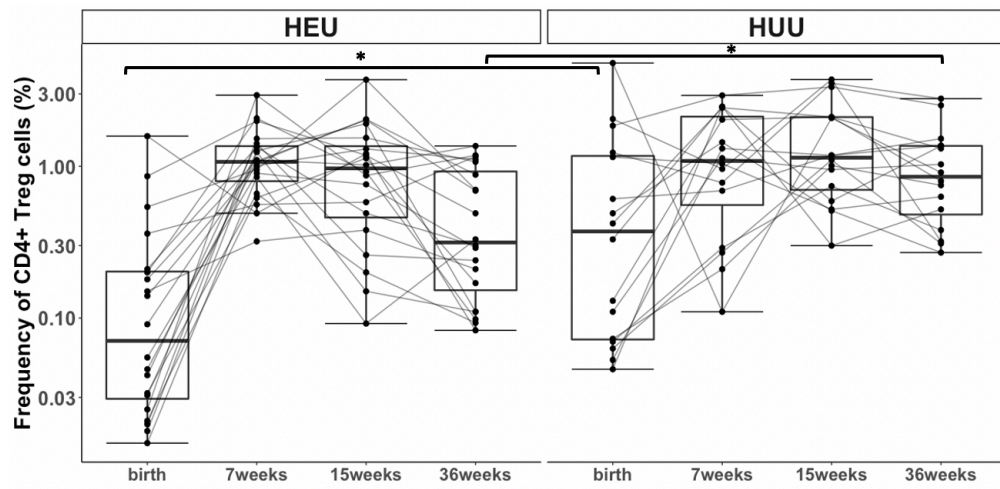
A**B**

Figure S2 Ontological changes of CD4+ cells in HIV-exposed uninfected (HEU) and HIV-unexposed uninfected (HUU) infants. A) Th17 and B) Treg cells.

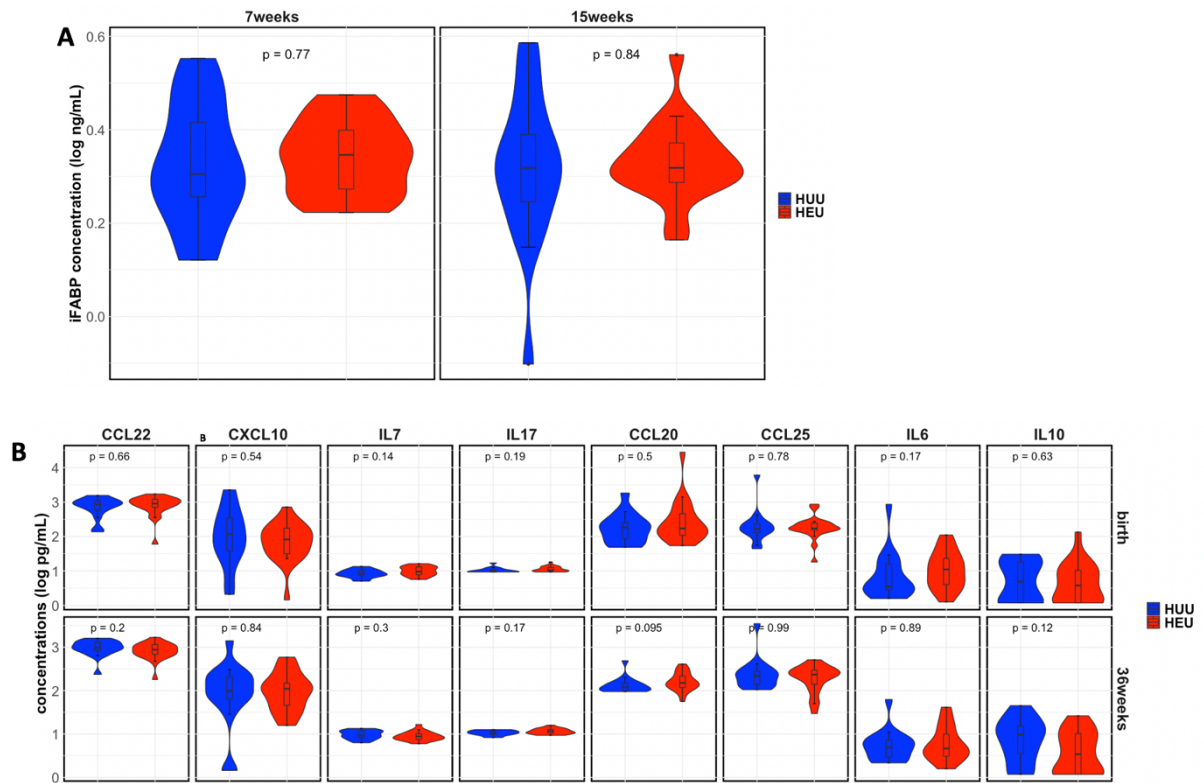


Figure S3 Plasma analytes measure in HIV-exposed uninfected infants (iHEU) and HIV-unexposed uninfected infants (iHUU). A) Comparisons of iFABP concentrations between iHEU and iHUU measured at 7 and 15 weeks. B) Chemokine and cytokine concentrations measured at birth and 36 weeks of age.

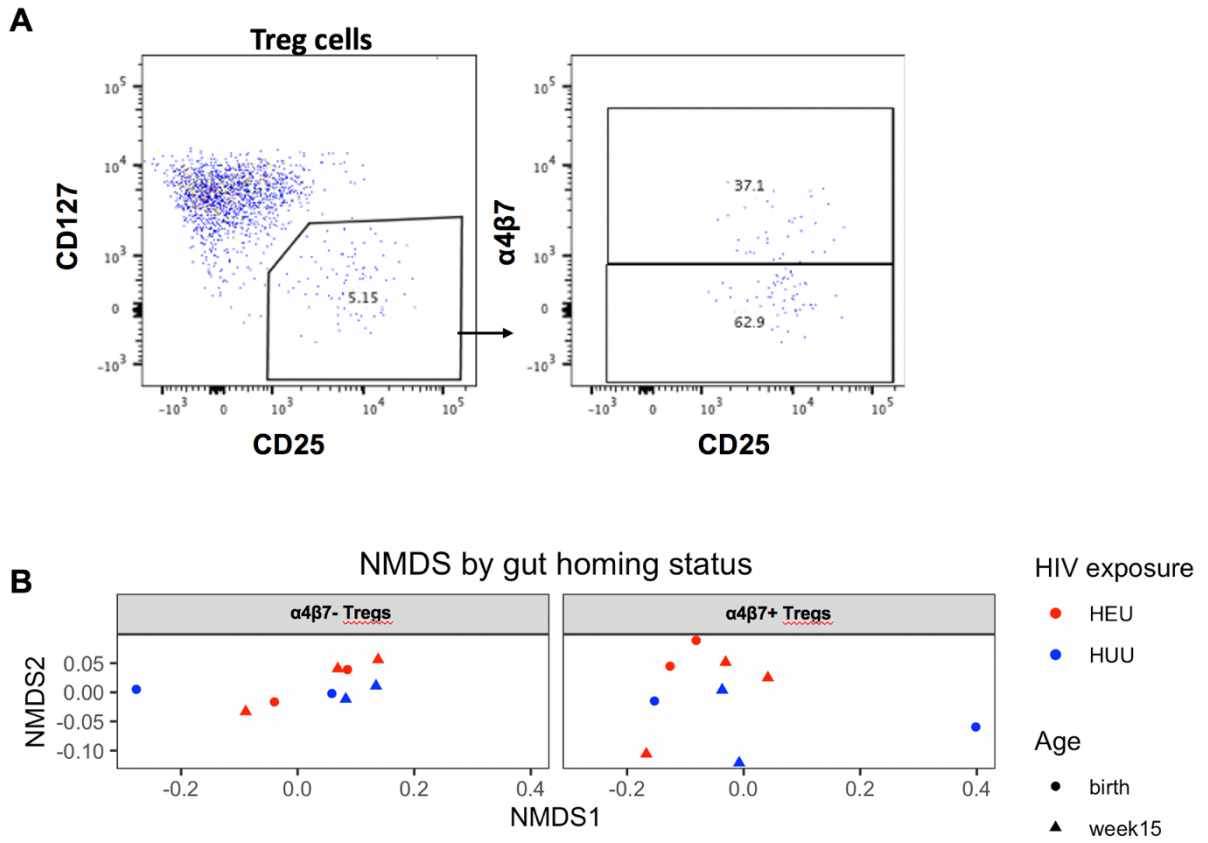


Figure S4 HIV exposure alters transcriptomic profile of gut homing Treg cells. A) Flow plot showing sorting of $\alpha 4\beta 7^-$ and $\alpha 4\beta 7^+$ Treg cells. B) NMDS plots showing Bray Curtis distances between infant samples.