

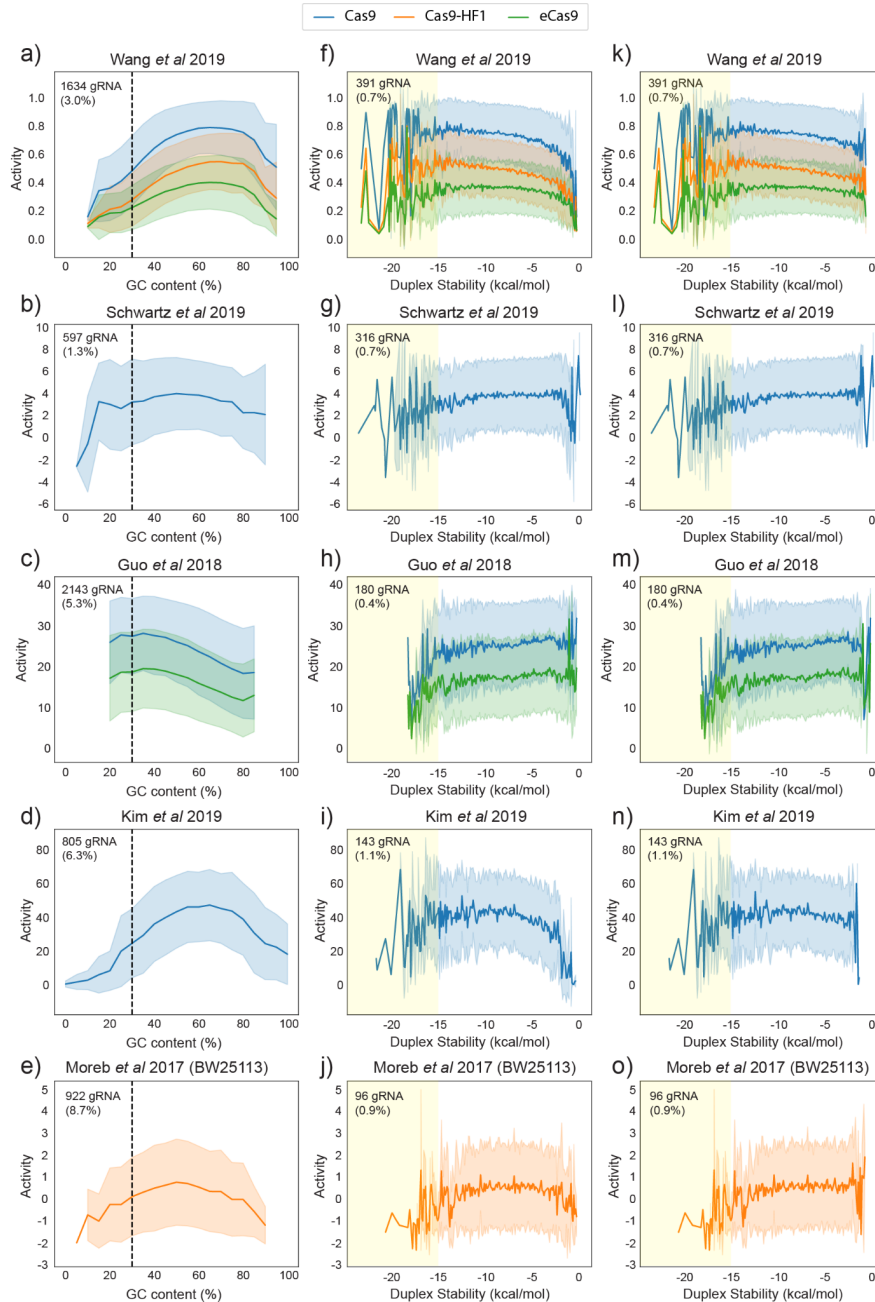
# A meta-analysis of gRNA library screens enables an improved understanding of the impact of gRNA folding and structural stability on CRISPR-Cas9 activity.

Moreb, E.A.<sup>1</sup>, and Lynch, Michael D.<sup>1,2,3</sup>

<sup>1</sup>Department of Biomedical Engineering, Duke University

<sup>2</sup>To whom all correspondence should be addressed.

<sup>3</sup>[michael.lynch@duke.edu](mailto:michael.lynch@duke.edu)



**Supplemental Figure S1:** The relationship between activity and GC content for the five largest datasets is shown in (a-e). Duplex Stability is plotted against activity for the same datasets in (f-j). We removed gRNA with GC below 30% and re-plotted Duplex Stability against activity (k-o).