

Supplemental Table S1. Primers used for quantitative PCR analysis

S.No	Gene	Primers
1	<i>ABHD5</i>	F: 5'- TTTAAGTCTAGTGCAGCGTTT – 3'
		R: 5'- GCATTTTACCAATTCGCTGGA – 3'
2	<i>ACOX1</i>	F: 5'- TTTGAGGGAGAAAACACTGTCA – 3'
		R: 5'- CCTGAGTGCACCTGATCATAAC – 3'
3	<i>BCSL2</i>	F: 5'- ATCTCCACTTCTTCGCGTTC – 3'
		R: 5'- CCAAATAGCAGGAGGCTAGAGA – 3'
4	<i>CPT1A</i>	F: 5'- CCTCCGTAGCTGACTCGGTA – 3'
		R: 5'- CGGAGTGACCGTGAAGTGA – 3'
5	<i>PPIA</i>	F: 5'- TCCAAAGACAGCAGAAAACCTTTCG – 3'
		R: 5'- TCTTCTTGCTGGTCTTGCCATTCC – 3'
6	<i>DGAT1</i>	F: 5'- GTCCCAGGACTGCACCAG – 3'
		R: 5'- CTCCCCTCACACCACCAG – 3'
7	<i>DGAT2</i>	F: 5'- TCGAGACTACTTTCCCATCCA – 3'
		R: 5'- GGTGGTATCCAAAGATATAGTTCCTG – 3'
8	<i>FASN</i>	F: 5'- CAAGTGCACGGTGTTCAT – 3'
		R: 5'- CTTCCCTTGGGCCATGTAG – 3'
9	<i>FITM2</i>	F: 5'- AACAAGCGCAACGTCCTC – 3'
		R: 5'- TGGTAGTTGGTGAGGGCAAT – 3'
10	<i>PLIN2</i>	F: 5'- GCTGCAGTCCGTCGATTT – 3'
		R: 5'- CACCCGAGTCACCACACTC – 3'
11	<i>PLIN5</i>	F: 5'- CTTGAACACATGGACAAAGAGG – 3'
		R: 5'- TCAAGTTGGCCTGAATAGGG – 3'
12	<i>SCD</i>	F: 5'- CCTAGAAGCTGAGAACTGGTGA – 3'
		R: 5'- ACATCATCAGCAAGCCAGGT – 3'
13	<i>SREBF1</i>	F: 5'- CGGAGCCATGGATTGCACTT – 3'
		R: 5'- TCAAATAGGCCAGGGGAAGTCAC – 3'

Supplemental Data

Figure S1: mRNA expression of genes encoding LD maturation factors

Huh7 hepatocytes were incubated with/without 0.4 mM OA/0.5% BSA in the presence/absence of DGAT inhibitors for 4 h. Relative mRNA expression of *BSCL2* and *FITM2* encoding LD maturation factors SEIPIN and FIT2 (Fat storage-inducing transmembrane protein 2). Data are presented as the ratio of expression of a given gene to *PPIA* (cyclophilin).

Figure S2: ATGL, CGI-58 and PLIN2 protein expression

Huh7 hepatocytes were preincubated for 1 h with serum free DMEM incubated in the presence/absence of DGAT inhibitors followed by 4 h treatment with 0.4 mM OA/0.5% BSA and DGAT inhibitors in the presence/absence of lipase inhibitor E600. Immunoblot analysis of LD proteins, PLIN2, ATGL, ABHD5/CGI58, and GAPDH (loading control) were performed in total cell lysates.

Figure S3: LD localization of ATGL-EGFP and co-localization of ATGL-EGFP and ABHD5/CGI58-mCherry

(A) Huh7 hepatocytes were transfected with ATGL-EGFP and incubated with 0.4 mM OA/0.5% BSA for 4 h.

(B) Huh7 hepatocytes were co-transfected with ATGL-EGFP and ABHD5/CGI58-mCherry and incubated with 0.4mM OA/0.5% BSA for 4 h.

Figure S4: Co-localization of ATGL and PLIN5

(A) Huh7 hepatocytes were co-transfected with ATGL-EGFP and PLIN5-mCherry and incubated with 0.4mM OA/0.5% BSA for 4 h.

Supplementary Figures

Figure S1

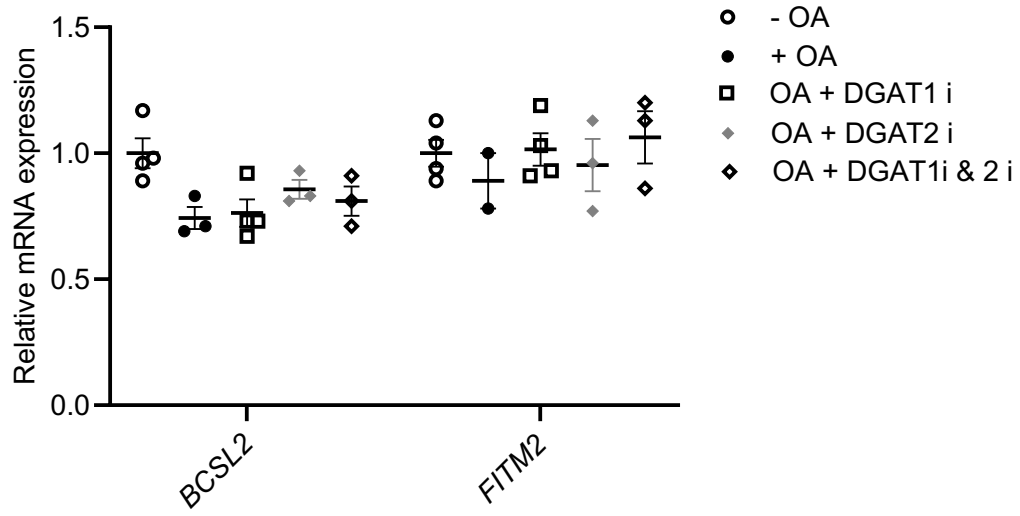


Figure S2

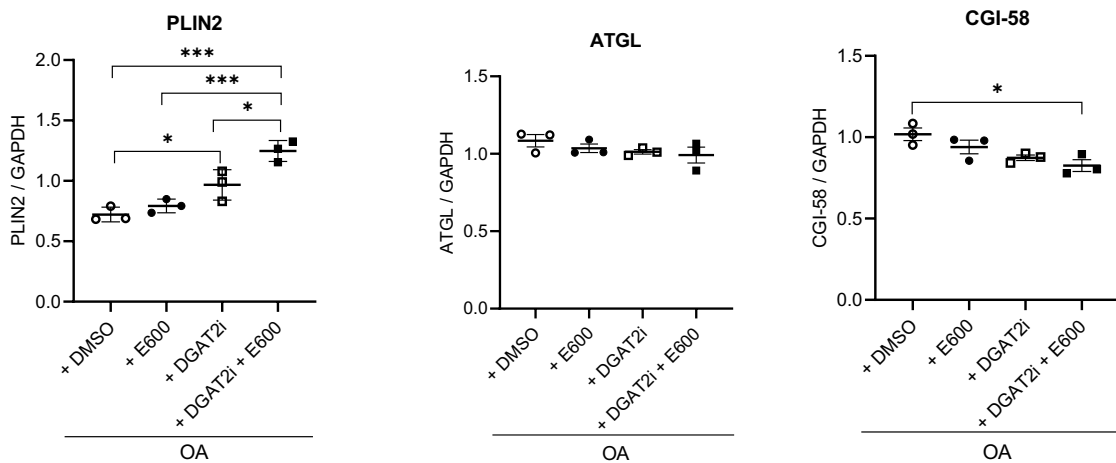
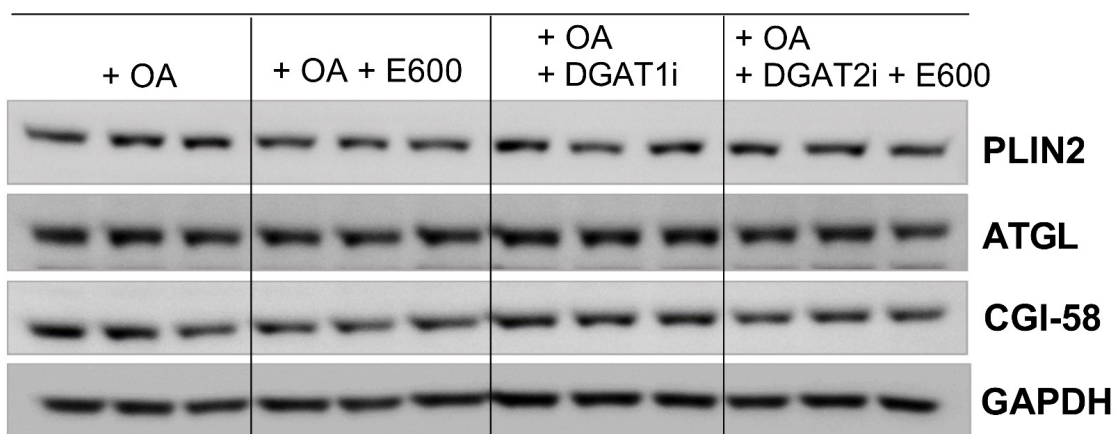
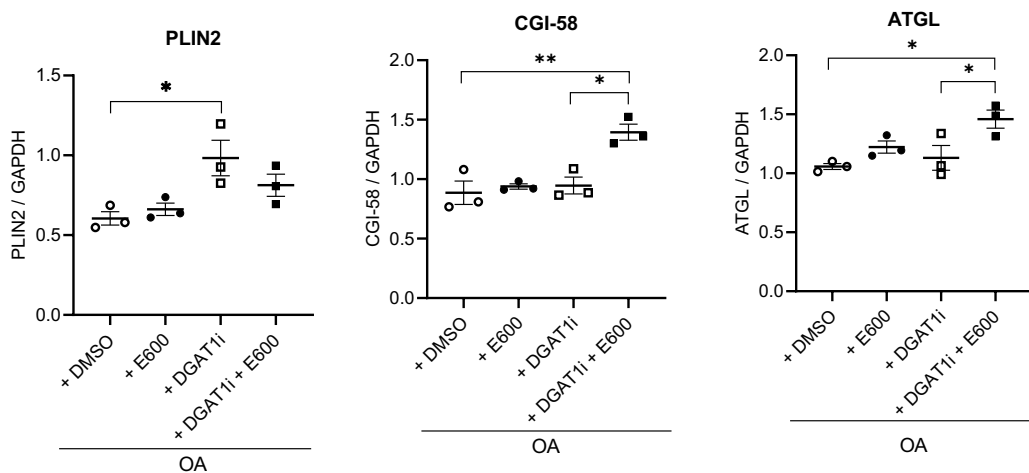
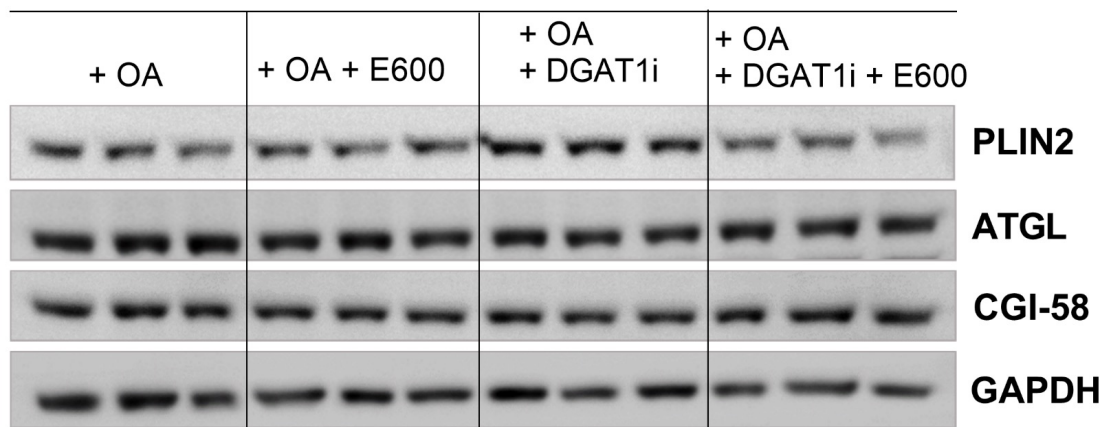
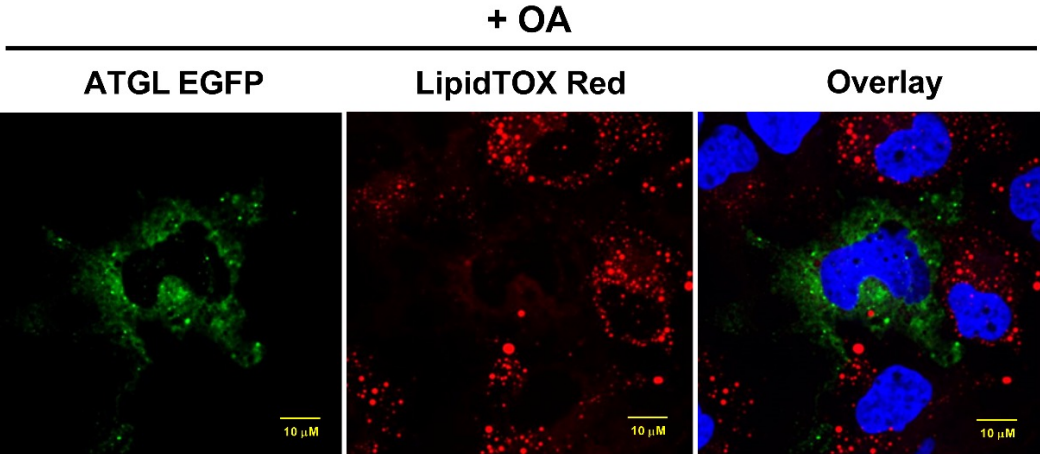


Figure S3

A



B

