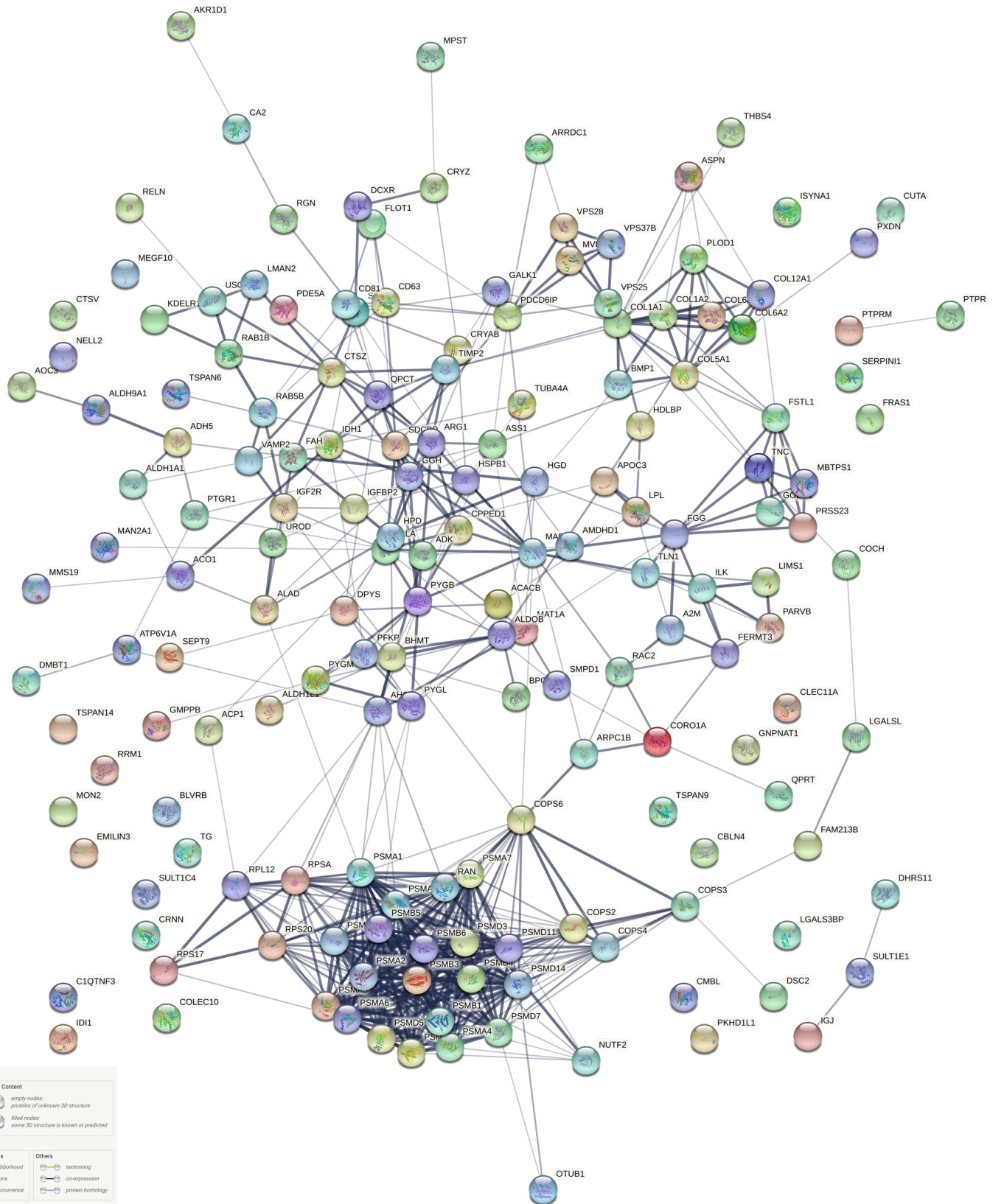
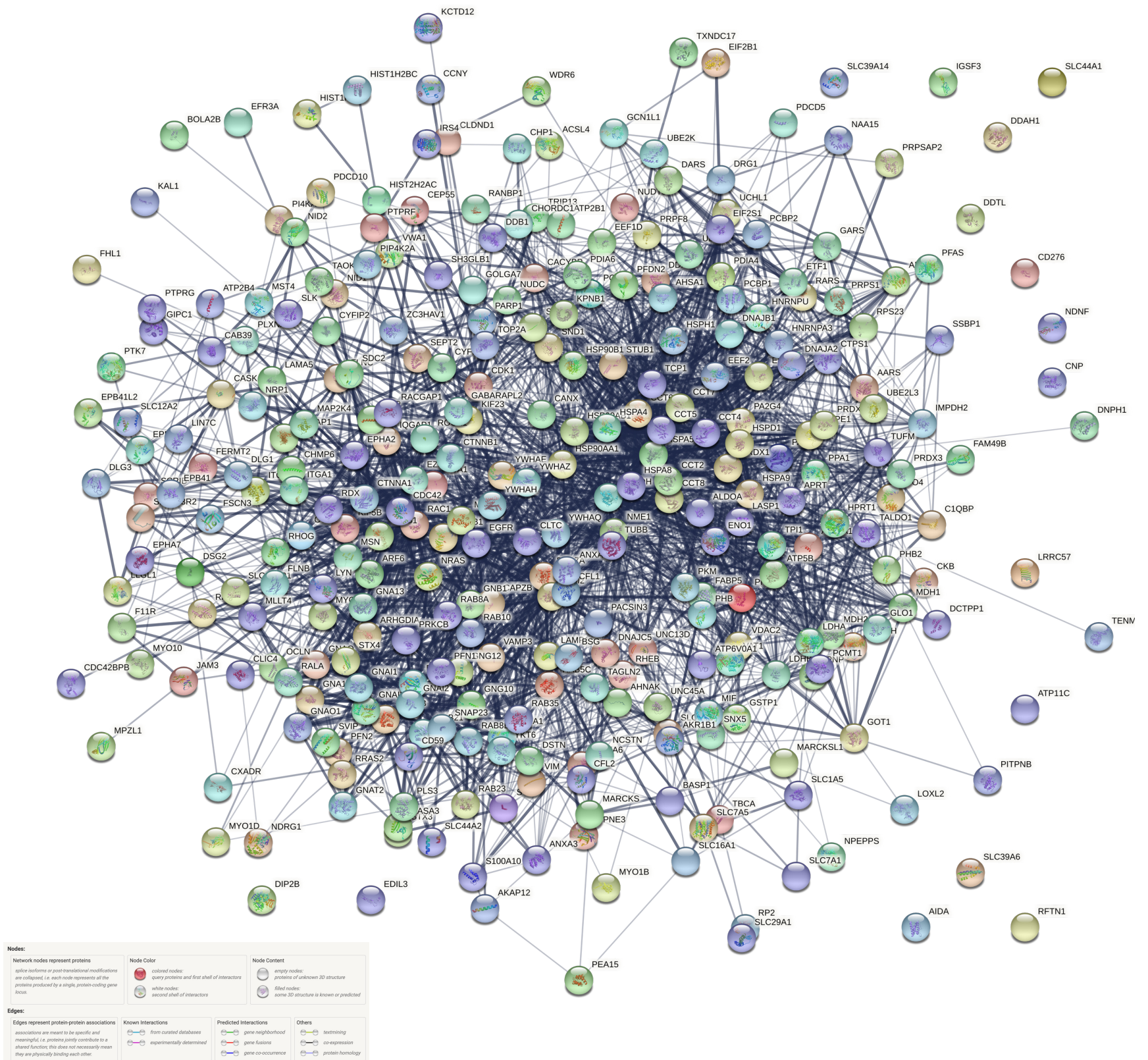


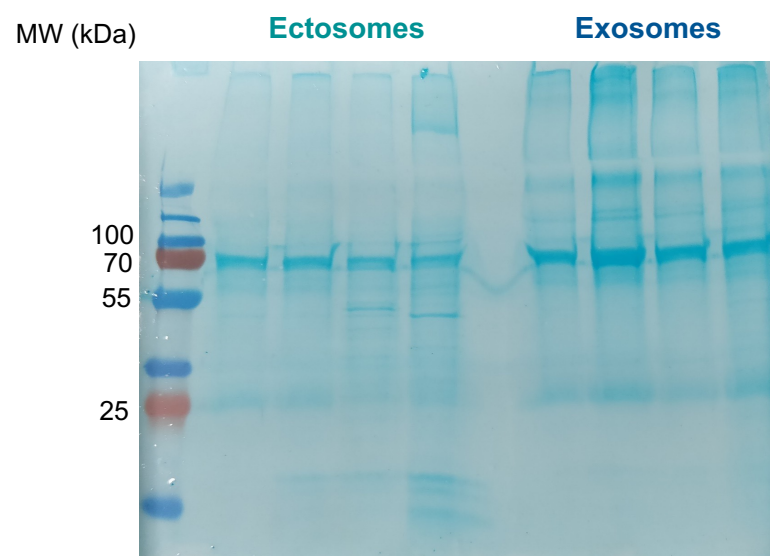
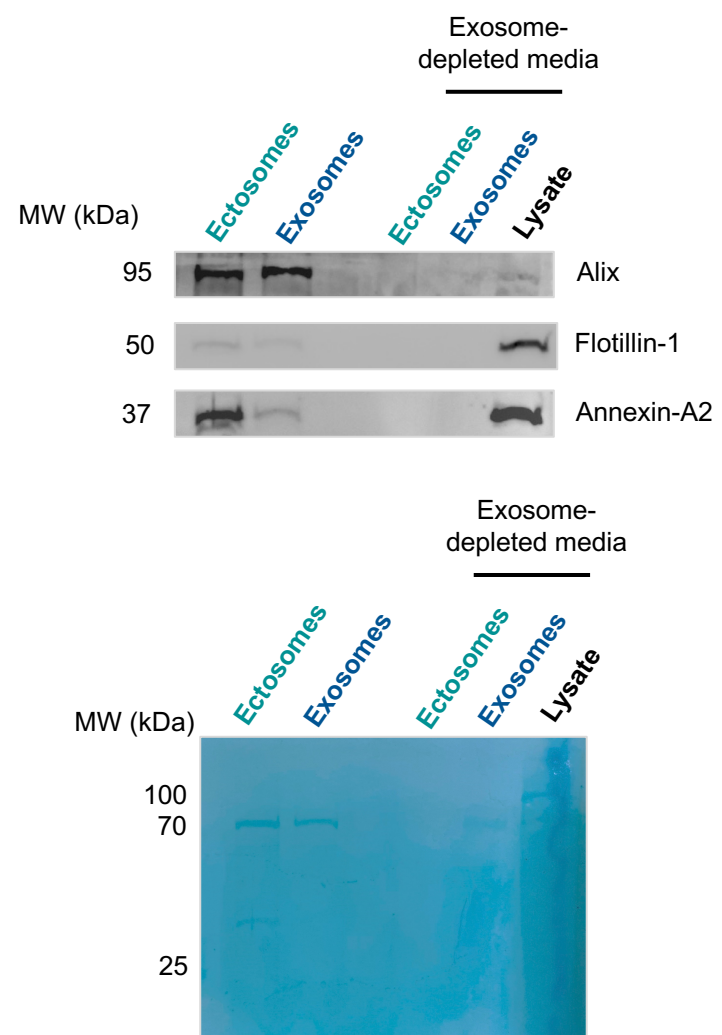
Supplementary Figure 1. Protein hits enriched in ectosomes and exosomes. Volcano plots of quantitative differences in proteins in EVs fractions.



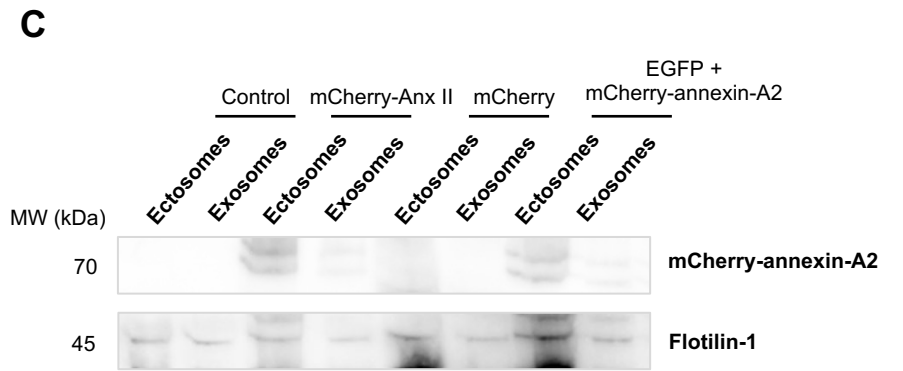
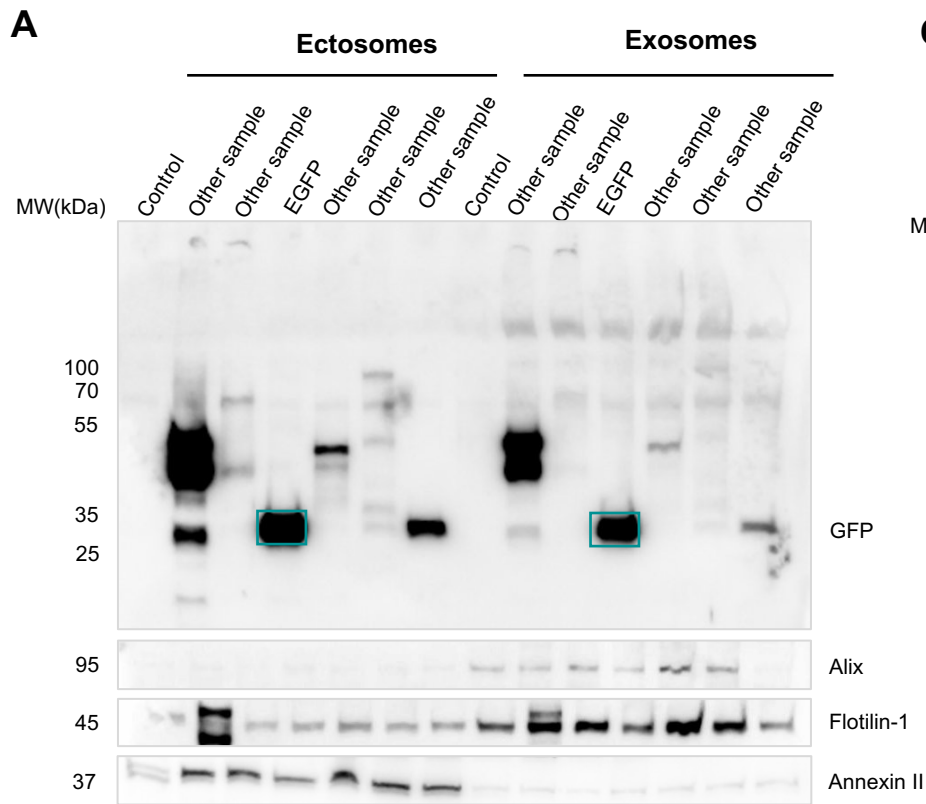
Supplementary Figure 2. Functional protein association networks were plotted by using the STRING database.



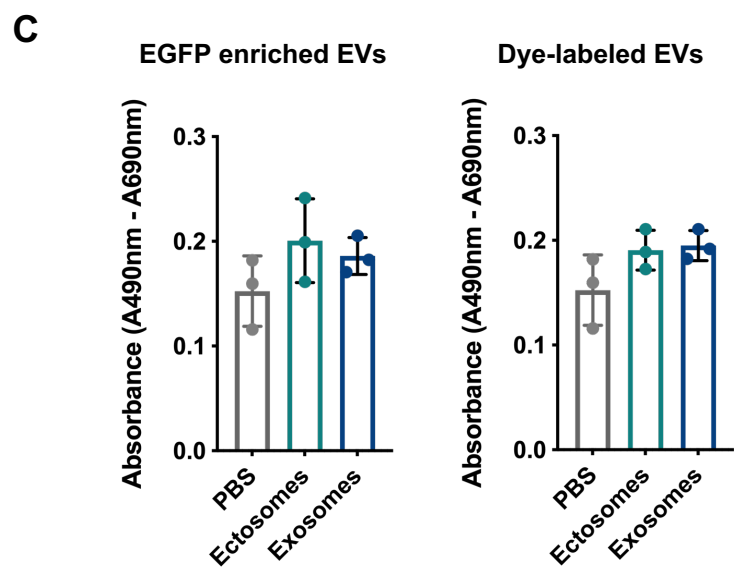
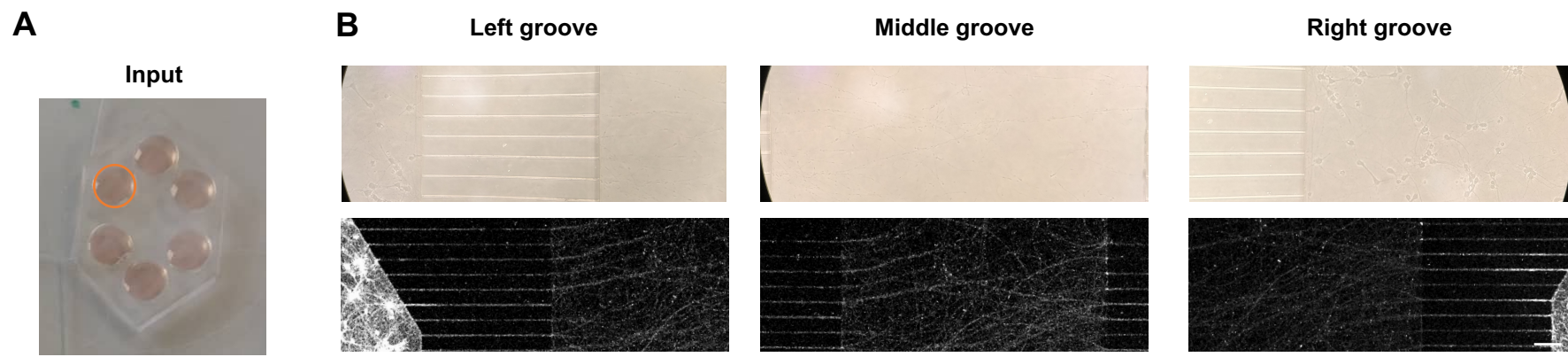
Supplementary Figure 3. Functional protein association networks were plotted by using the STRING database.

A**B**

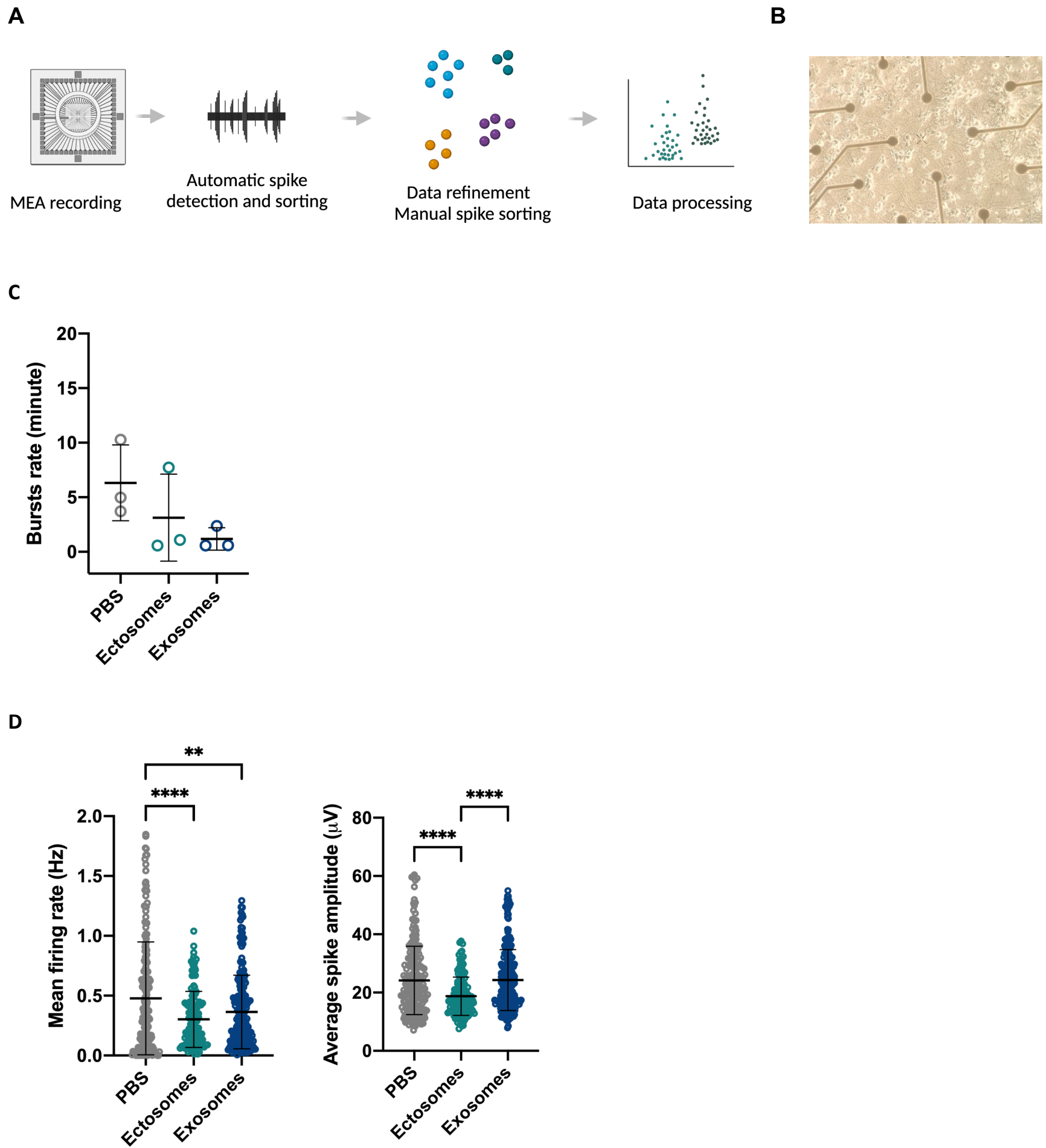
Supplementary Figure 4. Conditioned media used for the experiments does not contain residual EVs.



Supplementary Figure 5. Characterisation of EGFP and annexin-A2 levels in EVs.



Supplementary Figure 6. Cellular uptake of EVs by primary cortical neurons.



Supplementary Figure 7. EVs modulate synaptic function in primary cortical neurons.