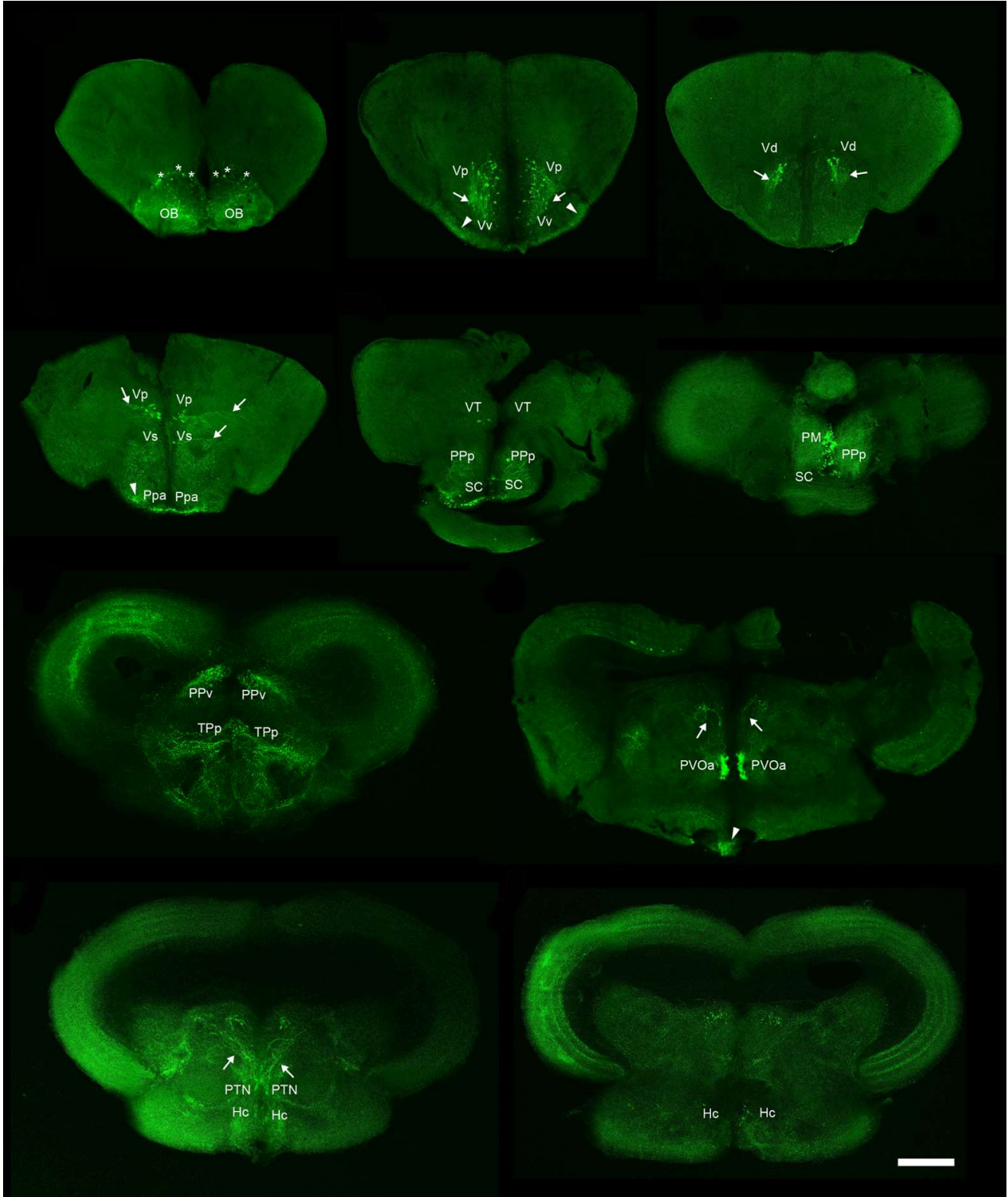
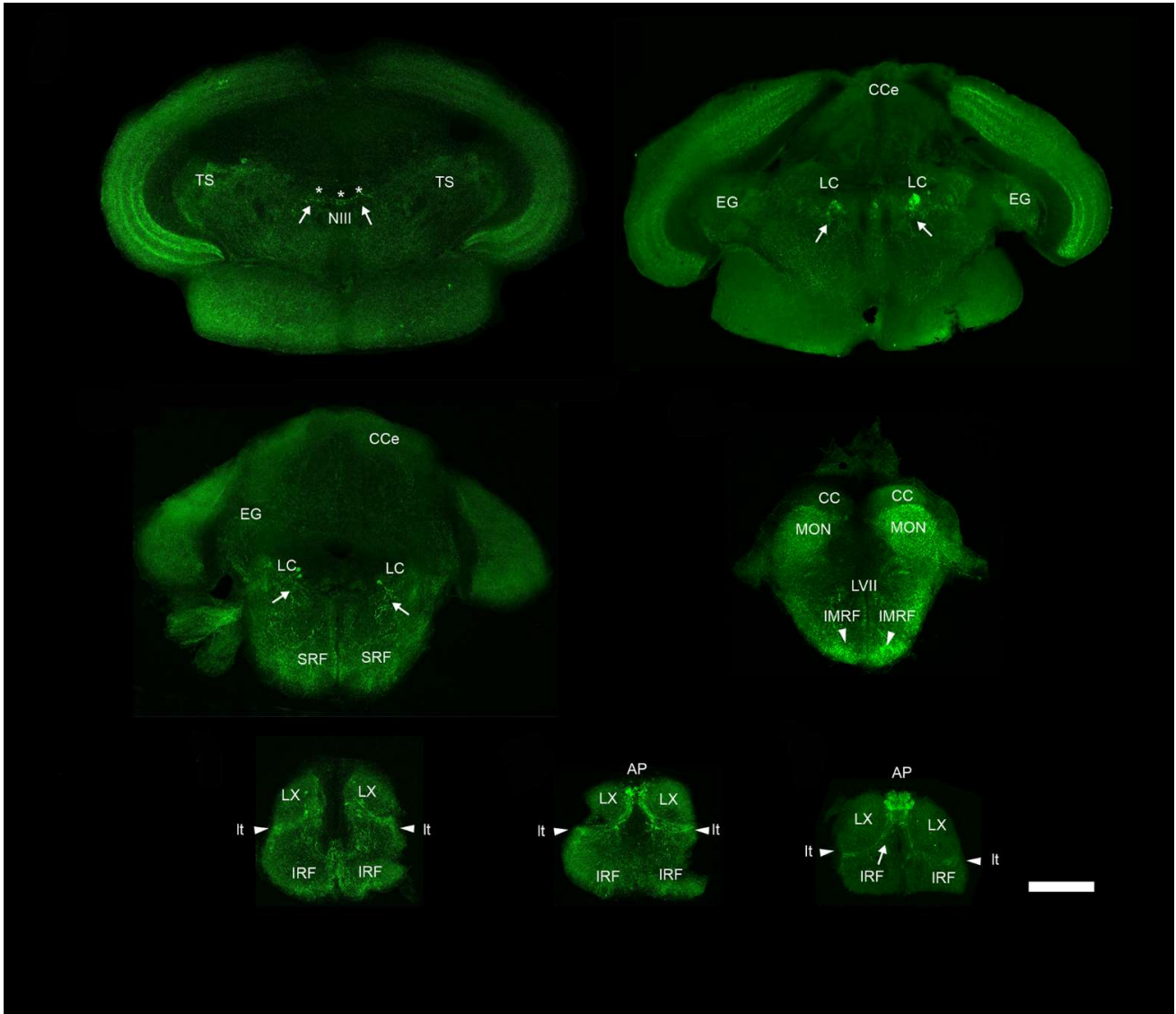
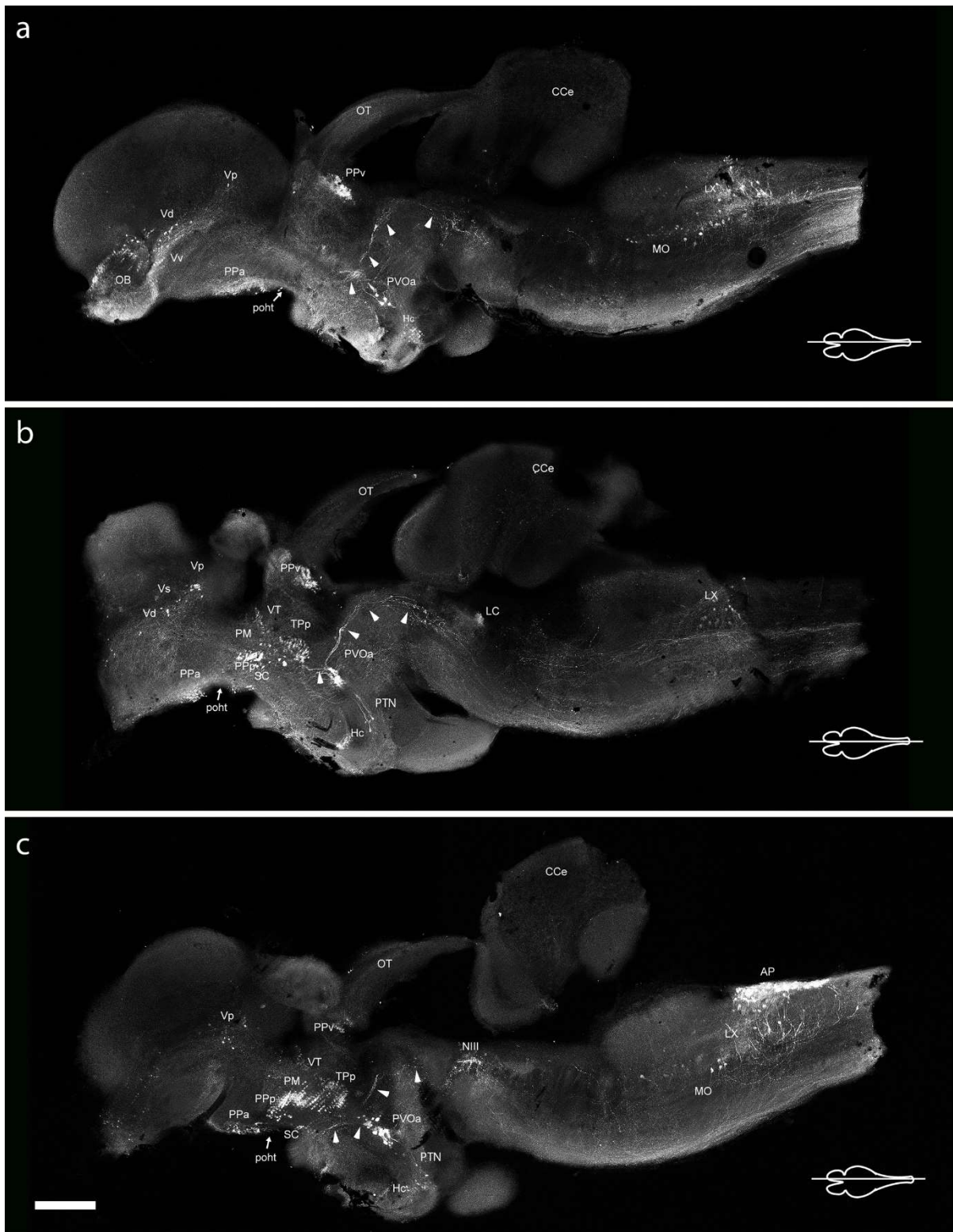


Supplementary Material

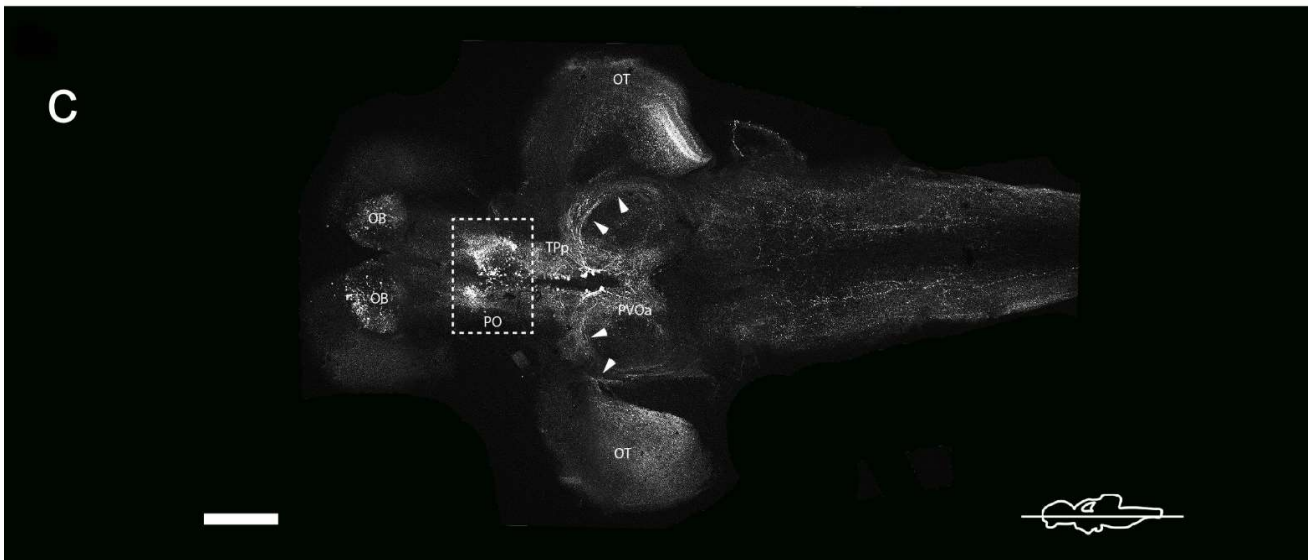
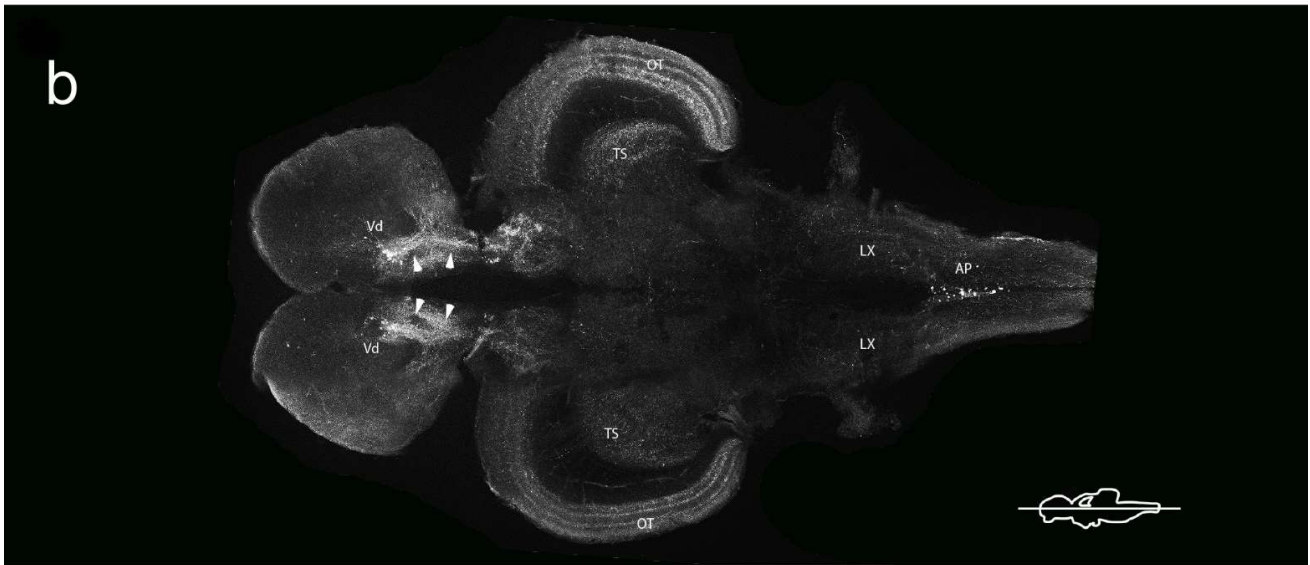
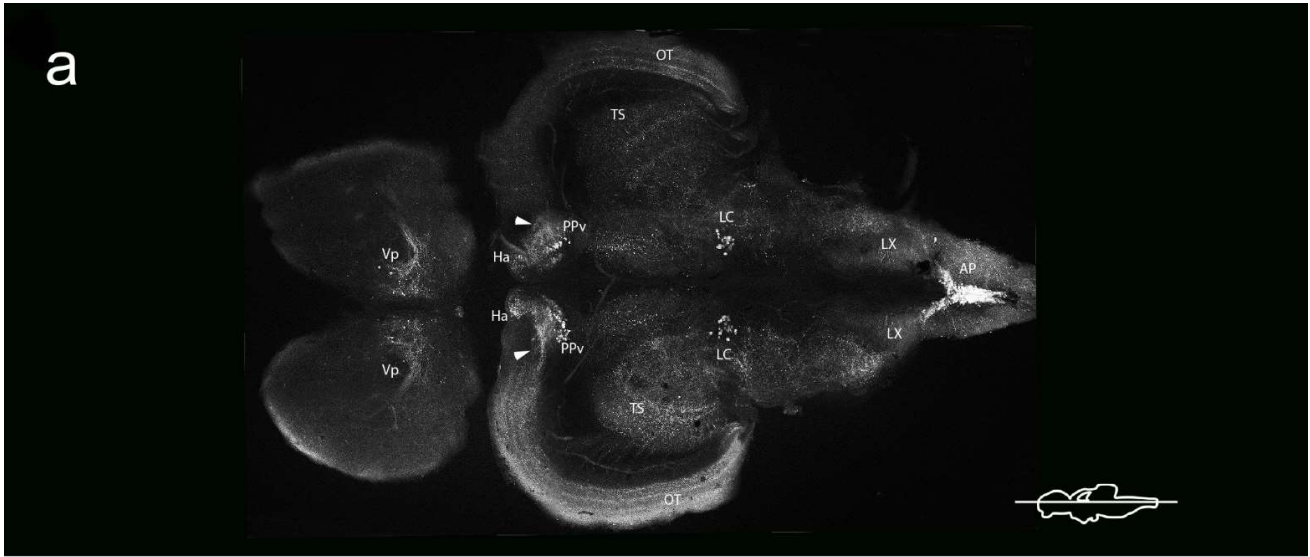




Supplementary Figure 1. Photomicrographs of transverse sections (in rostral to caudal order) showing the anti-TH immunofluorescence in the brain of *Nothobranchius furzeri*. Asterisks point neuronal somas, arrows show the direction of the processes and arrowheads indicate regions with intense density of TH+ neuropil or tracts. For more details see the text and for abbreviations see list. Scale bar, 500 μ m.



Supplementary Figure 2. Photomicrographs of para-sagittal sections near the midline (from lateral towards the midline), showing the distribution of TH⁺ neuronal groups and fibers/tracts through the brain of *Nothobranchius furzeri*. Arrowheads point to TH⁺ fibers arising from the paraventricular organ-accompanying cells and arrows indicate the preopticohypothalamic tract. For more details see the text and for abbreviations see list. Scale bar, 500 μ m.



Supplementary Figure 3. Photomicrographs of horizontal sections (in dorsal to ventral order) showing the distribution of TH⁺ cellular groups and fibers/tracts along the rostrocaudal axis of the brain in *Nothobranchius furzeri*. Arrowheads in **(A)** indicate the TH⁺ fibers of the ventral periventricular pretectal nucleus reaching the optic tectum, in **(B)** the fibers from the posterior zone of ventral telencephalon following a caudal direction, and in **(C)** the direction of processes from the paraventricular organ-accompanying cells. For more details see the text and for abbreviations see list. Scale bar, 500 μm .