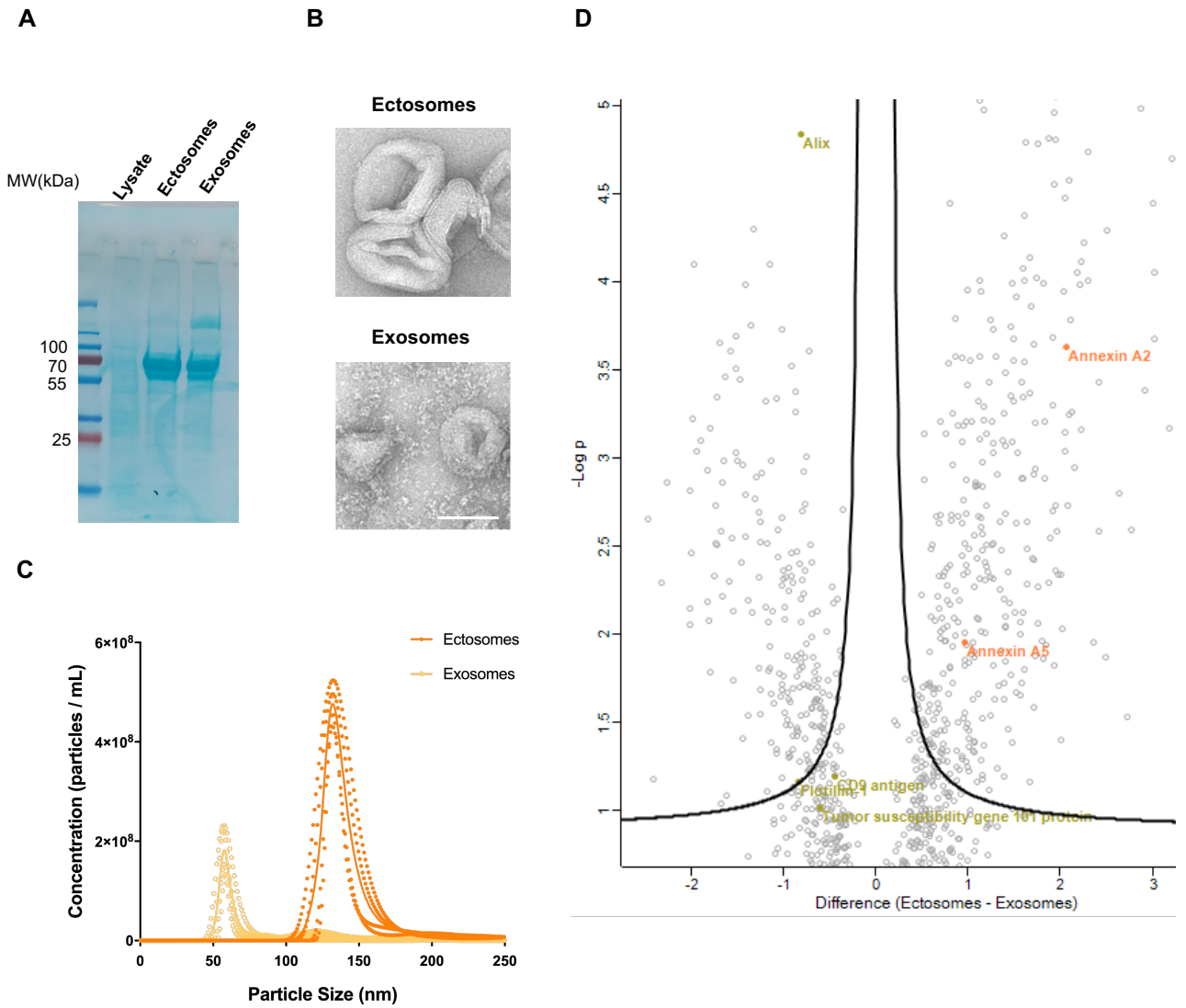
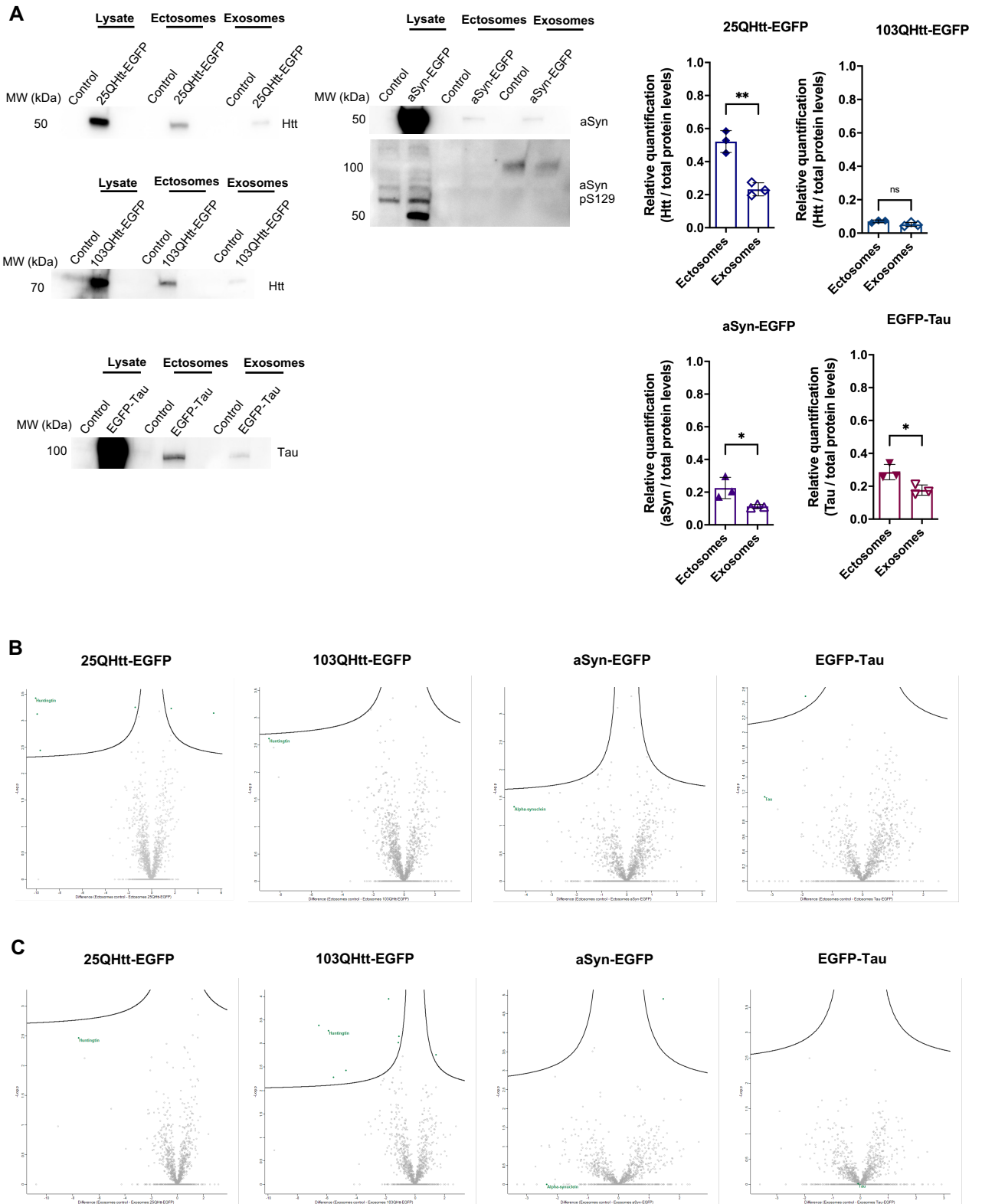


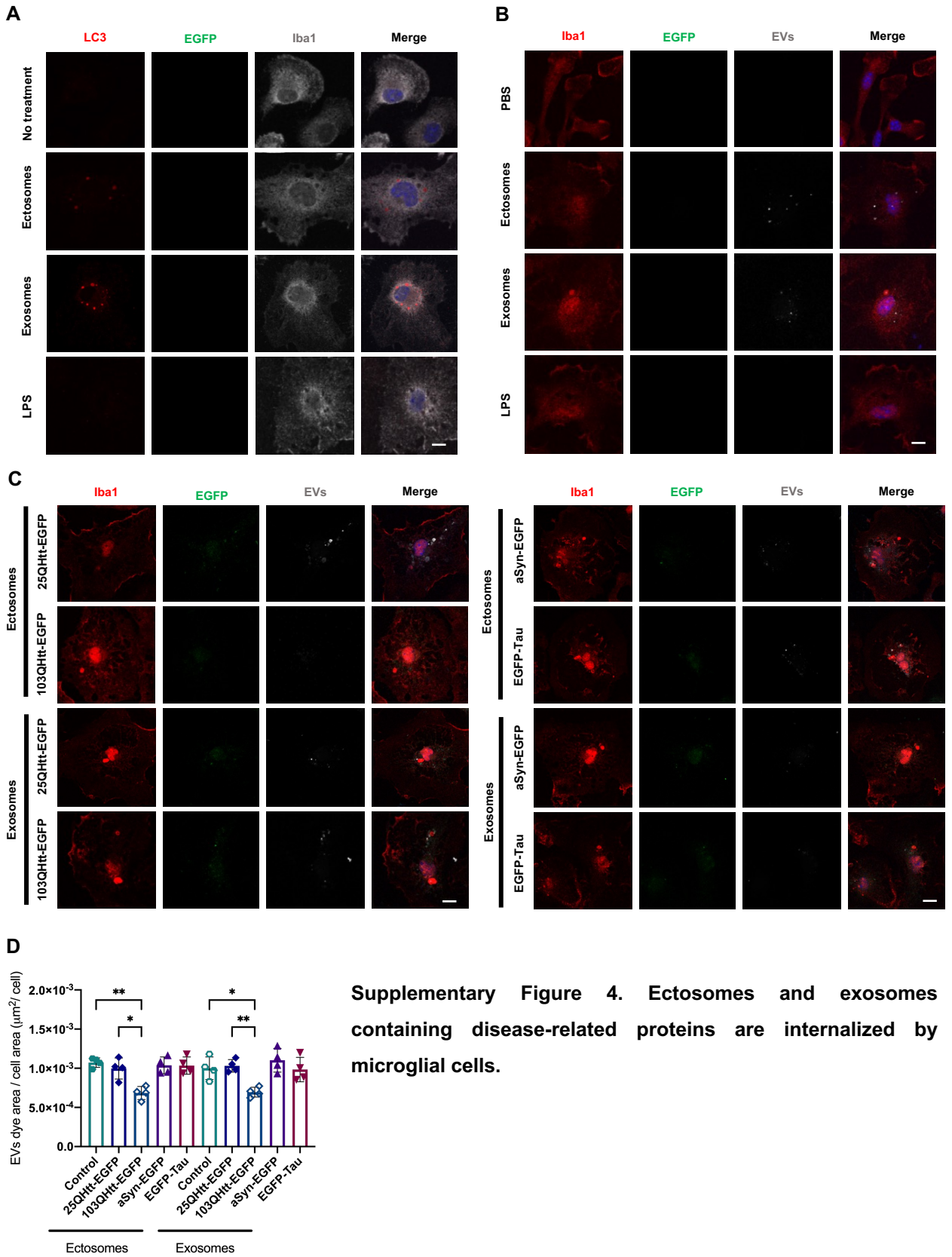
Supplementary Figure 1. Different disease-related proteins are secreted to the extracellular space.

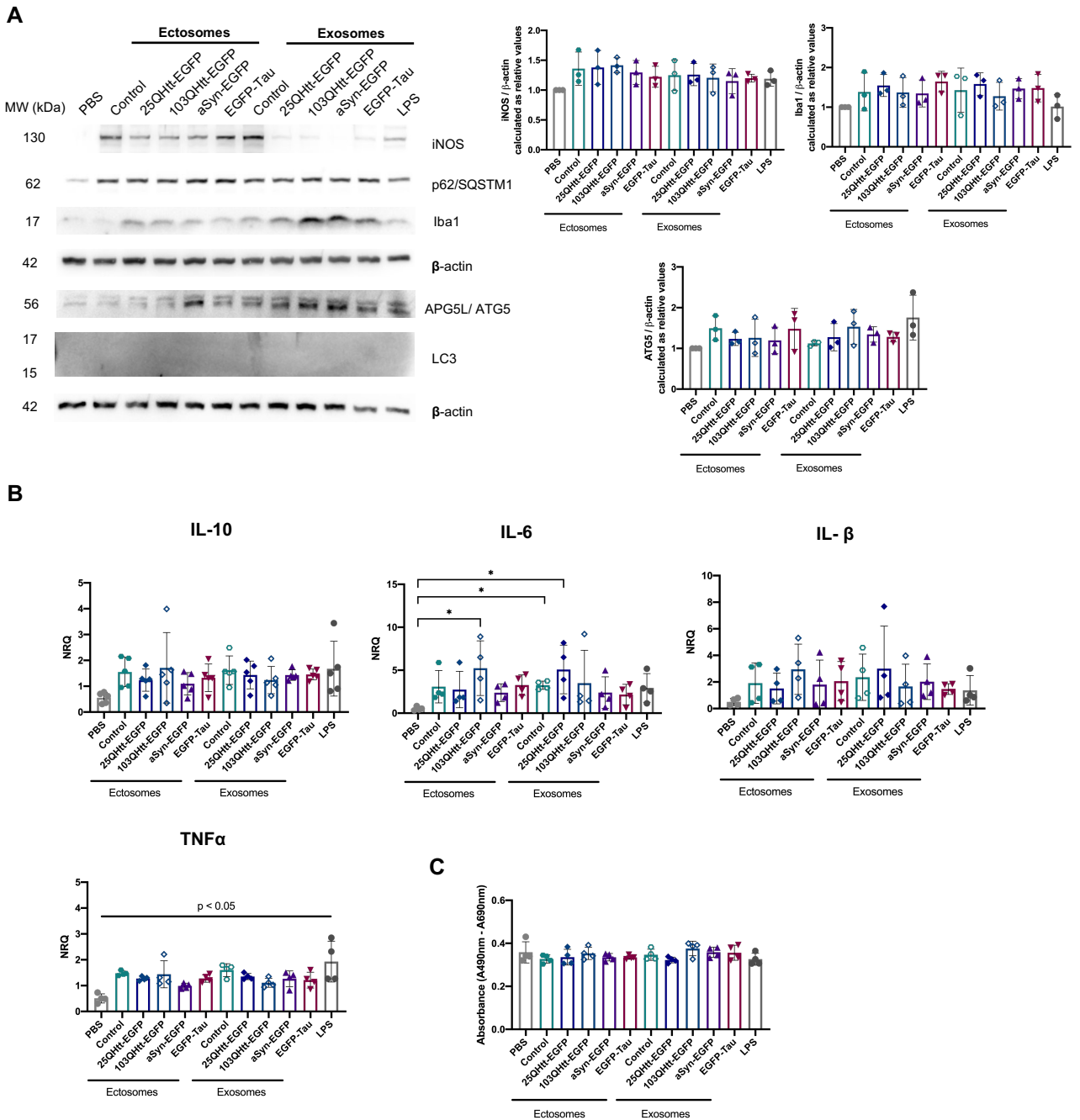


Supplementary Figure 2. Purification and characterization of secreted EVs using differential centrifugation.

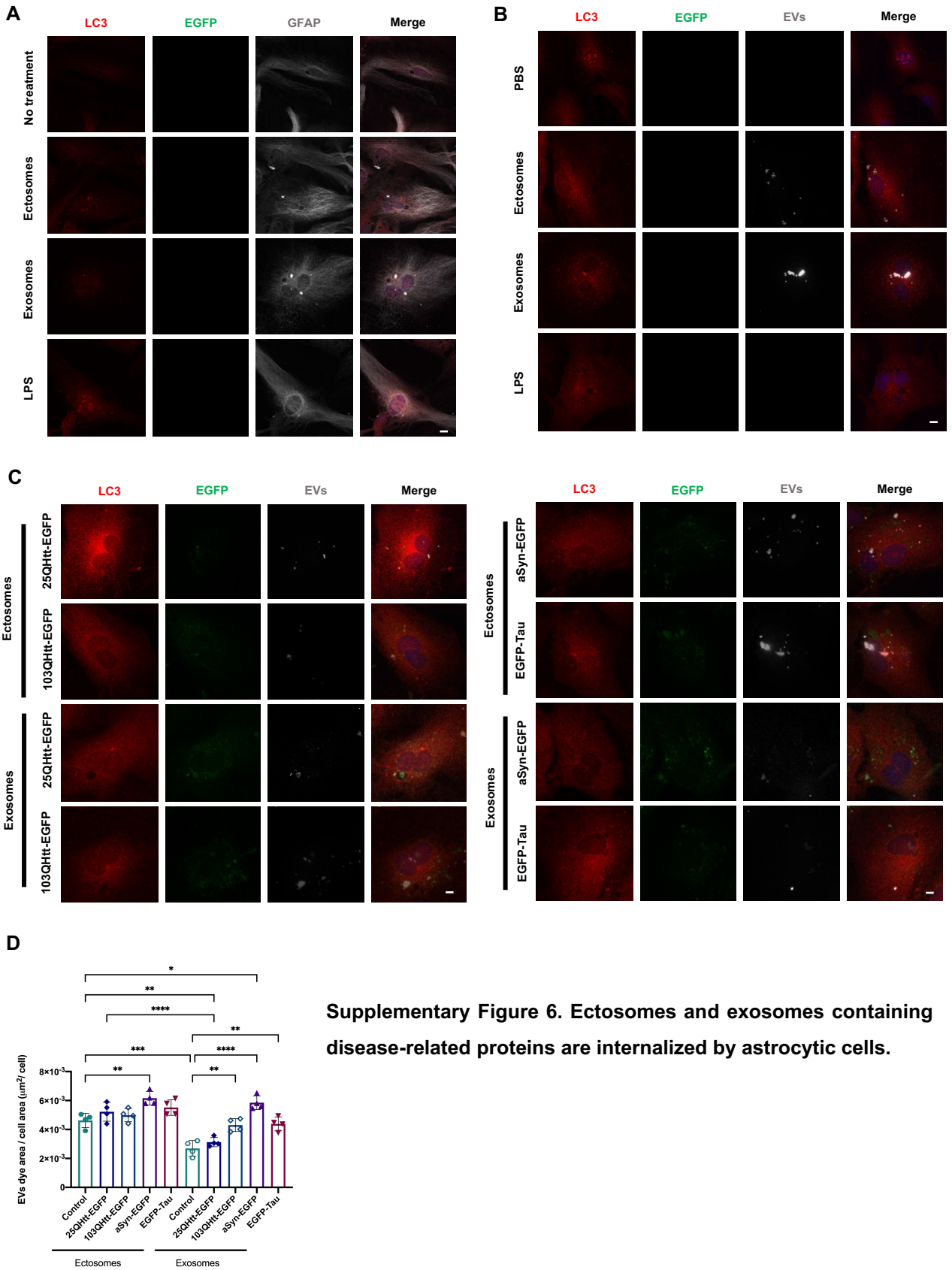


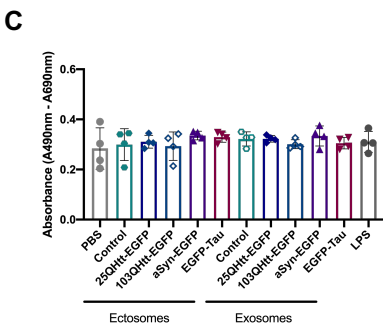
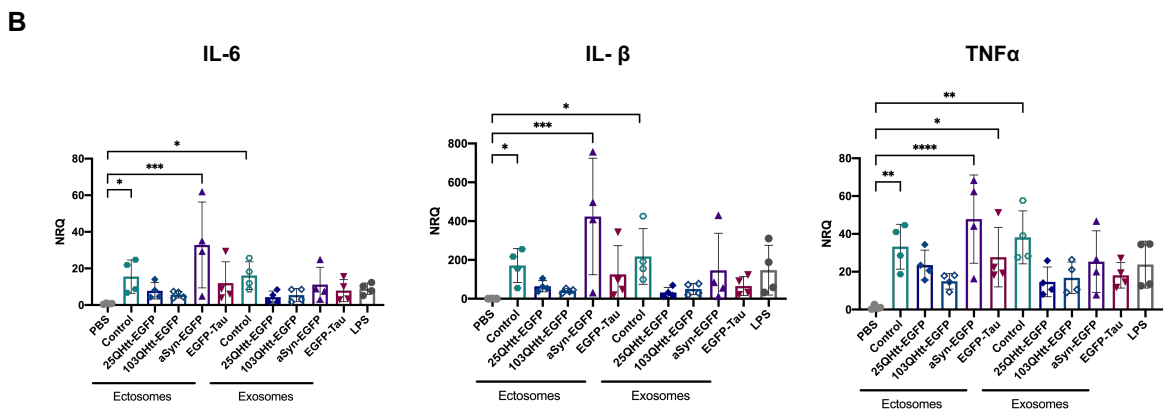
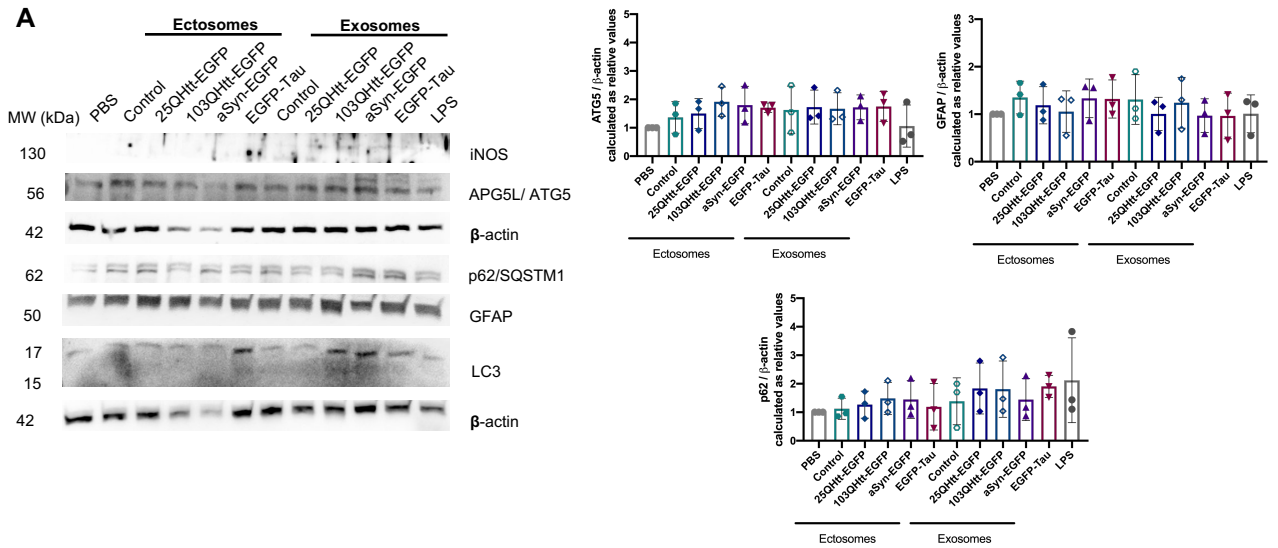
Supplementary Figure 3. Disease-related proteins are more enriched in ectosomes.



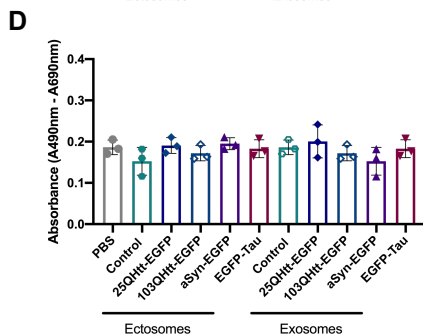
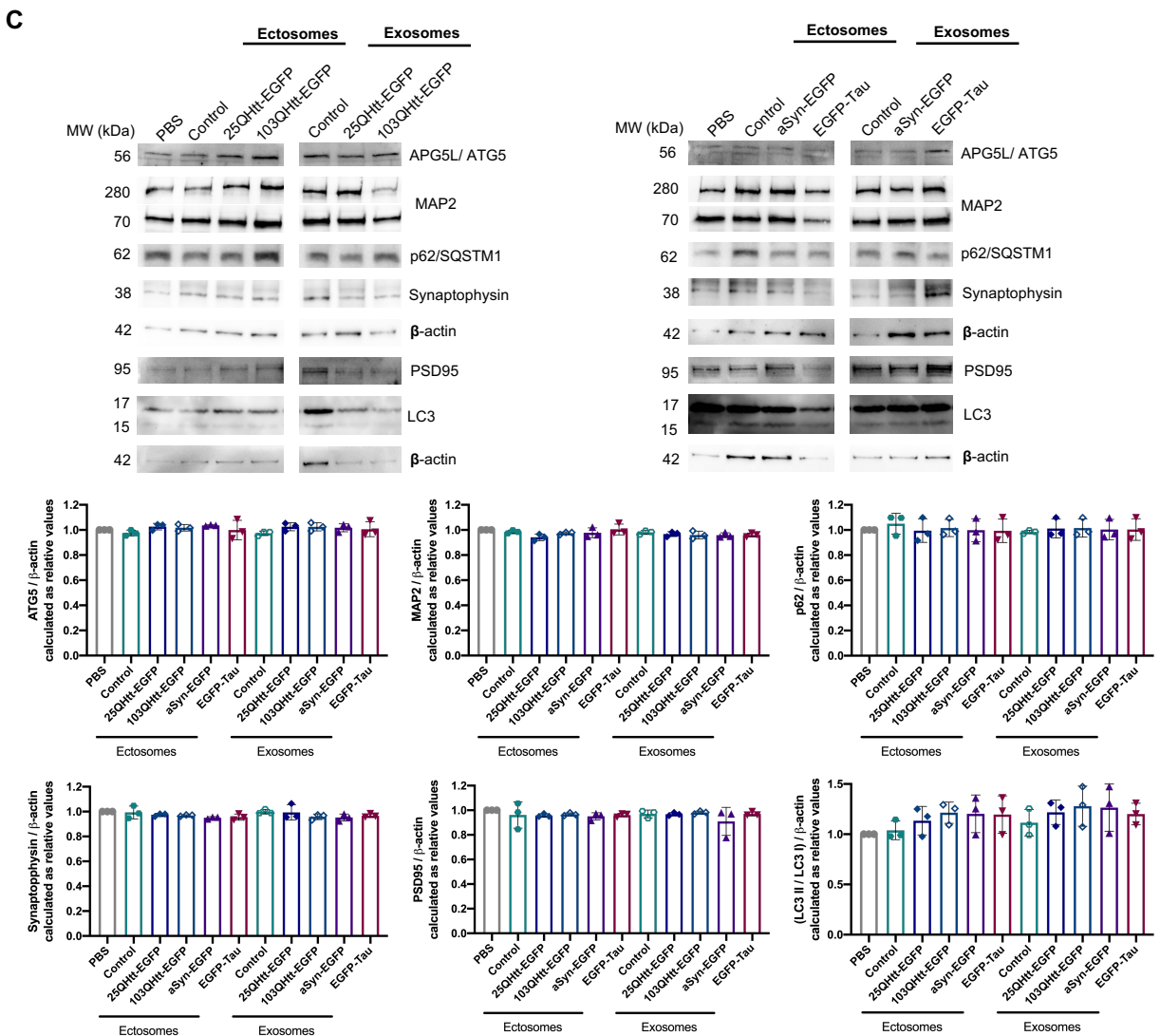
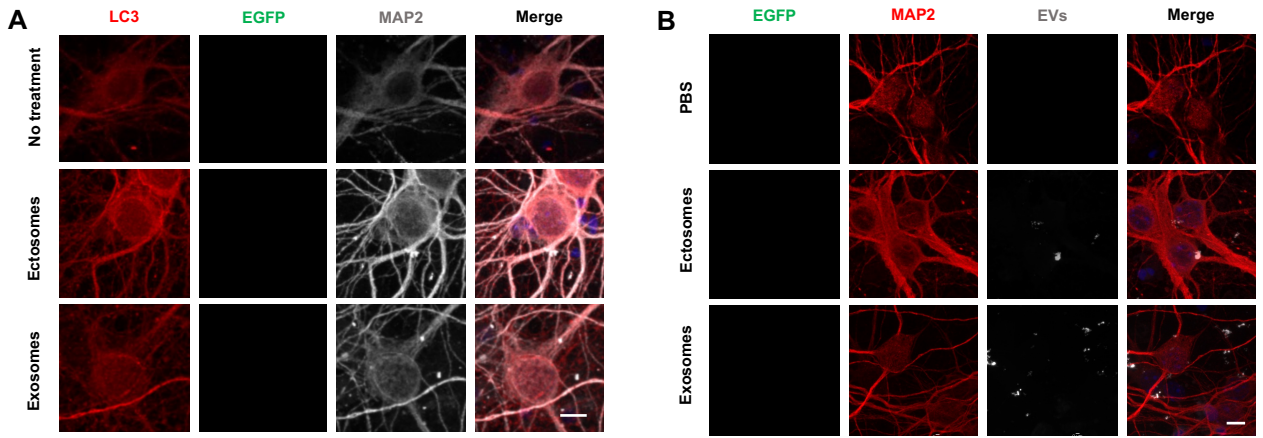


Supplementary Figure 5. Ectosomes and exosomes containing disease-related proteins are internalized by microglial cells.





Supplementary Figure 7. Ectosomes and exosomes containing disease-related proteins are internalized by astrocytic cells.



Supplementary Figure 8. Ectosomes and exosomes containing disease-related proteins are internalized by cortical neurons.