

Supplementary

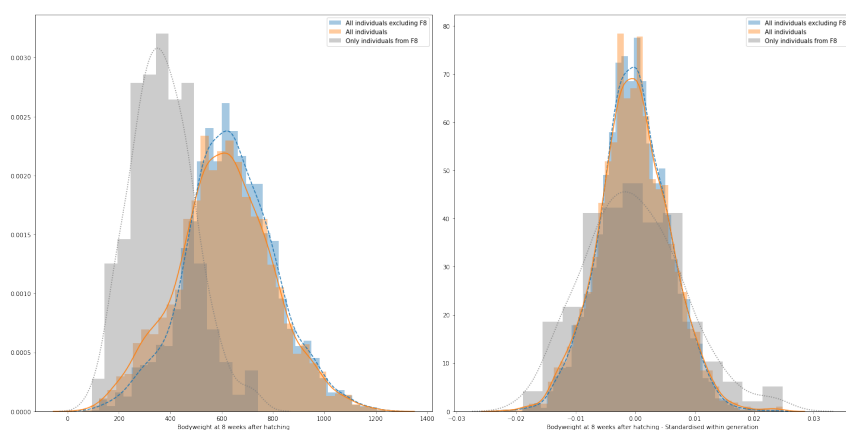


Figure S1: Standardisation of 56-day body weight. Left panel shows body weight before standardisation, right panel shows standardised 56-day body weight. All F_8 individuals (Grey), all individuals (Orange), and all individuals excluding F_8 (Blue)

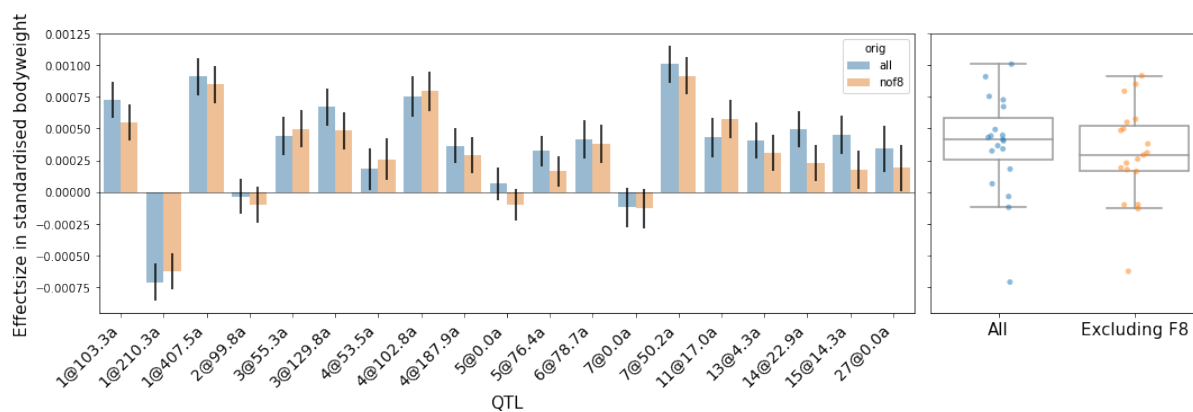


Figure S2: Effect Size in standardised body weight, including F_8 (blue) and excluding F_8 (orange). Left panel shows a barchart of the additive effect at each locus, right panel shows a box/striplot for all loci combined

	1	56	19.6(4.0)	0.43	5.79		
	1	171	31.6(4.1)	1.21	13.08	Growth1	Zan 2017, Wahlberg 2009, Jacobsson 2005
	2	99	13.5(4.0)	0.25	2.96	Growth3	Jacobsson 2005
	2	113	16.6(4.0)	0.14	3.65	Growth3	Zan 2017, Jacobsson 2005
	3	35	11.6(4.3)	0.27	2.87	Growth4	Zan 2017, Jacobsson 2005
	3	74	20.3(4.2)	0.31	5.41	Growth4	Jacobsson 2005
	4	11	20.7(4.4)	0.28	5.29	Growth6	Zan 2017, Wahlberg 2009
	4	23	20.4(4.0)	0.07	6	Growth7 ?	Jacobsson 2005
	4	36	25.6(4.2)	0.45	8.2	Growth7 ?	Jacobsson 2005
	4	70	14.6(3.9)	0.2	3.83	Growth7 ?	Zan 2017, Jacobsson 2005
	Z	1	12.9(3.5)	0.11	2.95		
	Z	10	12.8(3.8)	0.03	3.22		
	Z	34	14.0(3.4)	0.05	3.8		
	5	30	20.9(4.3)	0.31	5.22	Growth8	Jacobsson 2005
	7	4	5.2(4.3)	0.28	3.04		
	7	21	25.6(4.0)	1.26	9.6	Growth9	Zan 2017, Wahlberg 2009, Jacobsson 2005
	8	4	-7.1(4.2)	0.3	2.93		
	10	9	22.3(3.9)	0.27	7.25		Zan 2017
	10	21	15.8(4.3)	0.1	3.86		
	11	7	13.2(4.0)	0.32	4.22		

	13	12	19.6(3.9)	0.32	5.83	Growth10	Jacobsson 2005
	14	6	14.0(4.1)	0.16	3.41		
	14	16	16.0(4.3)	0.01	3.15		
	20	11	16.3(4.3)	0.5	3.23	Growth12	Zan 2017, Wahlberg 2009
	23	6	10.9(4.3)	0.47	4.32		Zan 2017
			a=407				
			2a=814				

Table S2: Mean bodyweight and number of individuals per generation

generation	individuals	BW8 - mean(stdev)g
HWS- F_0	29	1522(36)
LWS- F_0	30	181(5)
HWS-LWS difference		1341
F_2	930	626(186)
F_3	429	696(170)
F_4	112	593(131)
F_5	118	656(155)
F_6	88	770(168)
F_7	41	661(178)
F_8	292	375(122)
F_9	50	710(186)
F_{10}	60	674(175)
F_{11}	87	579(165)
F_{12}	76	603(180)
F_{14}	32	730(192)

F_{15}	818	613(162)
F_{16}	89	650(174)
F_{17}	45	576(165)
F_{18}	87	528(148)
all	3354	614(188)

Table S3: All markers reaching significance after false-discovery-rate adjustment with alpha=10%

	Chromosome	Position(Mb)	a(SE) in gram	%var	lod
	1	35	10.32(4.156)	0.11947	1.765
	1	56	19.62(4.038)	0.4807	5.788
	1	79	2.36(4.191)	0.20871	1.799
	1	93	-12.34(4.009)	0.19455	2.144
	1	132	11.27(3.875)	0.1573	2.457
	1	171	31.59(4.059)	1.11277	13.077
	1	185	-3.88(4.077)	0.08036	1.731
	2	5	10.55(3.966)	0.117	1.732
	2	22	-10.7(4.064)	0.17337	1.695
	2	37	4.3(4.016)	0.26358	2.06
	2	58	10.95(4.229)	0.09418	2.513
	2	62	11.87(4.118)	0.01154	2.707

	2	99	13.47(3.97)	0.1638	2.963
	2	113	16.57(4.039)	0.12504	3.651
	2	141	14.19(3.948)	0.12695	2.808
	3	35	11.63(4.268)	0.2559	2.867
	3	74	20.35(4.165)	0.2721	5.408
	4	11	20.71(4.367)	0.16289	5.294
	4	23	20.44(3.989)	0.05897	6.003
	4	37	24.82(4.213)	0.63225	7.631
	4	71	14.39(3.932)	0.25961	3.623
	4	91	11.35(4.241)	0.2026	2.468
	5	3	5.73(4.055)	0.29812	2.366
	5	11	12.24(3.962)	0.15097	2.1
	5	17	9.34(4.222)	0.09418	1.82
	5	30	20.89(4.27)	0.22515	5.225
	6	10	10.95(4.029)	0.08556	1.629
	7	4	5.22(4.256)	0.30981	3.042
	7	21	25.56(3.98)	0.97001	9.599
	8	4	-7.1(4.232)	0.25772	2.93
	10	9	22.3(3.912)	0.29332	7.249
	11	7	13.17(4.036)	0.2799	4.223
	13	12	19.62(3.92)	0.25145	5.826
	14	6	14.04(4.116)	0.14015	3.408
	14	16	16.0(4.274)	0.02953	3.149
	18	3	-9.74(4.036)	0.22344	1.689
	19	9	8.04(4.08)	0.12524	1.858

	20	11	16.34(4.27)	0.60823	3.231
	21	6	9.59(3.496)	0.26196	2.075
	23	6	10.86(4.284)	0.35913	4.318
	28	0	7.9(4.252)	0.20064	2.47
	33	4	-12.35(4.411)	0.25283	2.138
			a = 565.44		
			2a = 1130.87		