

Supplementary Materials

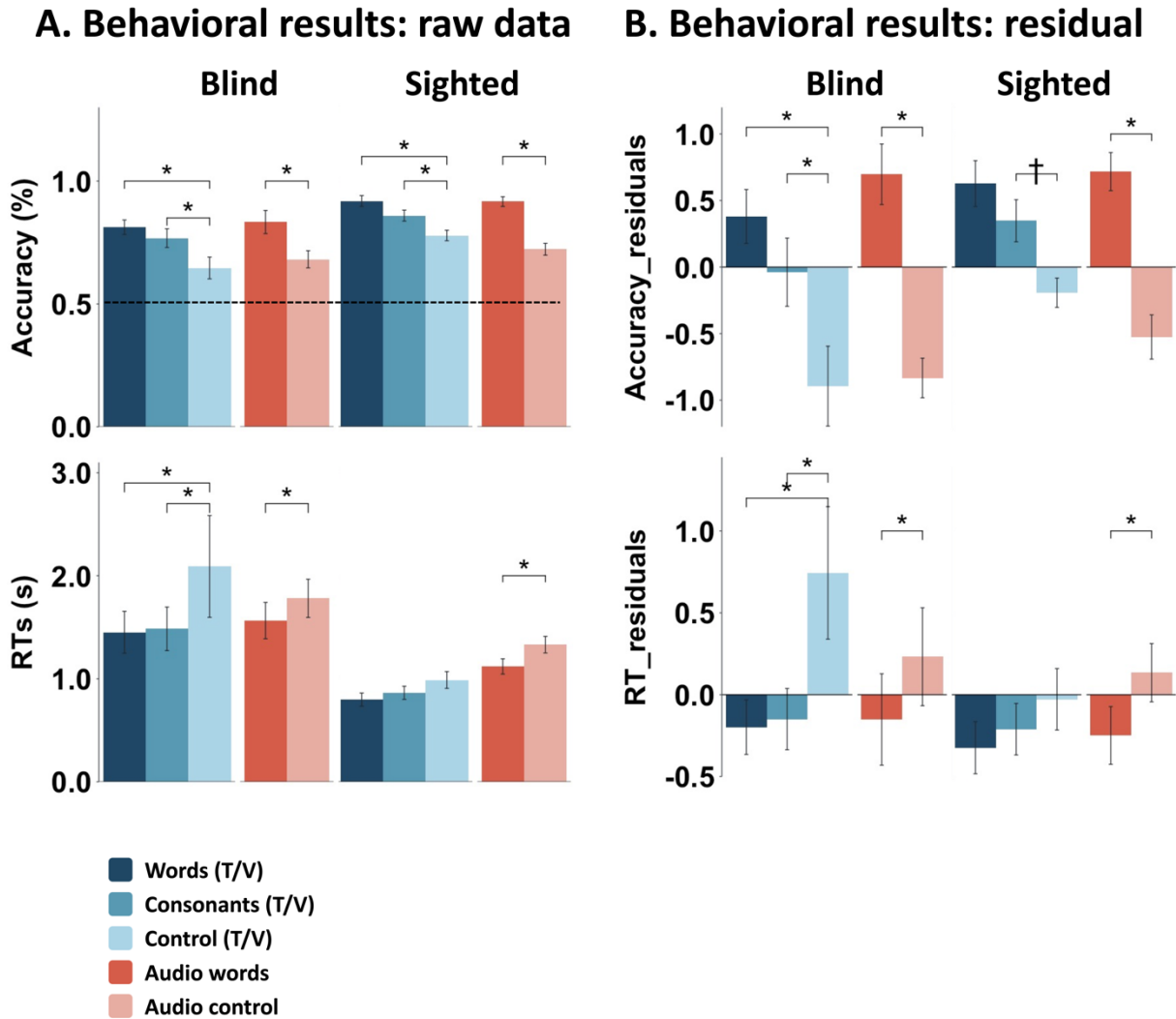
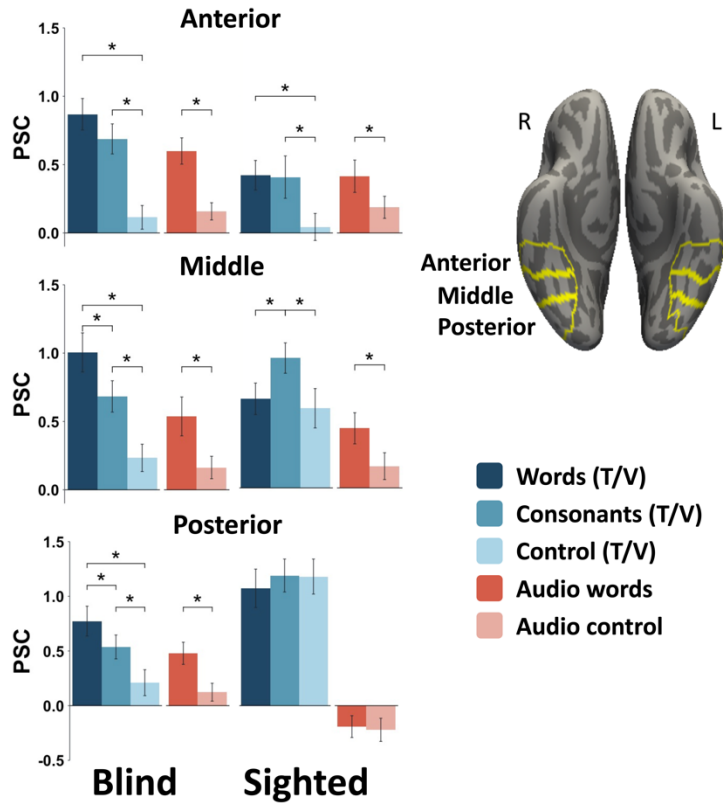


Figure S1. A. Behavioral results. Raw accuracy (upper) and reaction time (lower) results for blind (left) and sighted (right) groups for reading (blue colors) and listening (orange colors) tasks. B. Because groups differed in age, age was regressed out prior to statistical comparison. The residuals after regressing out age for accuracy (upper) and reaction time (lower) for blind (left) and sighted (right) groups. Error bars denote standard errors \pm the mean. Asterisks (*) denote significant Bonferroni-corrected pairwise comparisons within task ($p < .05$). Cross (†) denote marginal difference in Bonferroni-corrected pairwise comparisons within task ($0.05 < p < 0.1$). T = tactile, V = visual, RT = reaction time.

A. Left vOTC

(T/V consonants > T/V control)



B. Right vOTC

(T/V consonants > T/V control)

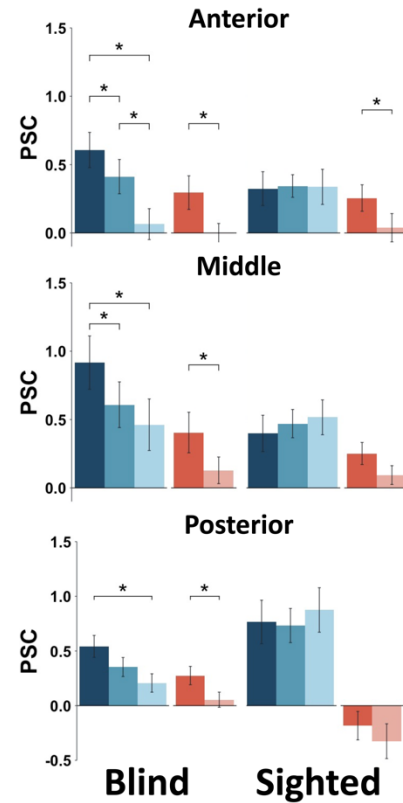
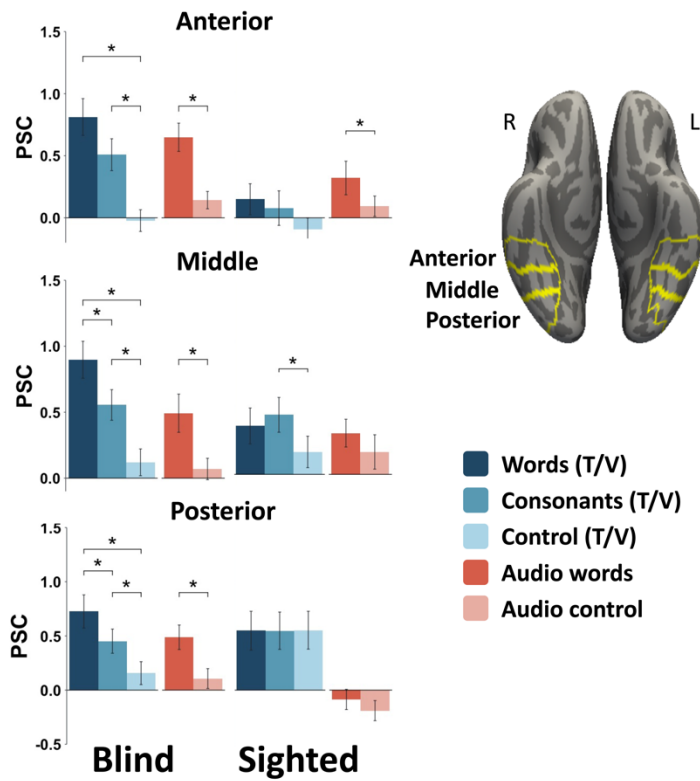


Figure S2. Responses in (A) left and (B) right vOTC across posterior, middle and anterior subregions for blind and sighted groups during the reading (blue colors) and listening (orange colors) tasks using the consonant strings > control (false font/shape) contrast to identify individual functional ROIs (as reported in the main text). Error bars denote standard errors +/- the mean. Asterisks (*) denote significant Bonferroni-corrected pairwise comparisons within task ($p < .05$). T = tactile, V = visual.

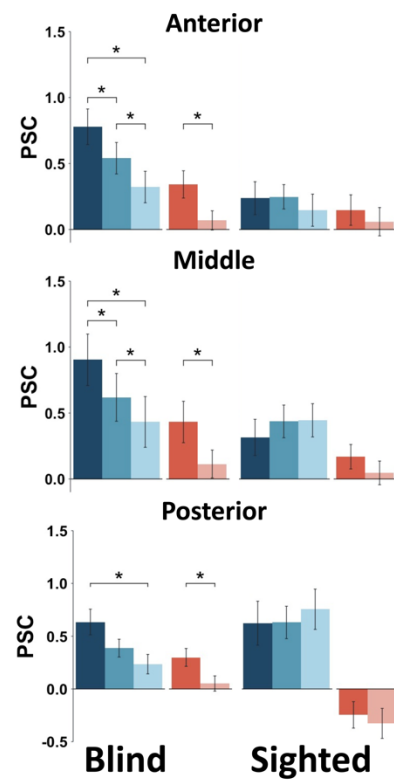
A. Left vOTC

(T/V words > T/V control)



B. Right vOTC

(T/V words > T/V control)



C. Left vOTC (T/V words > T/V control)

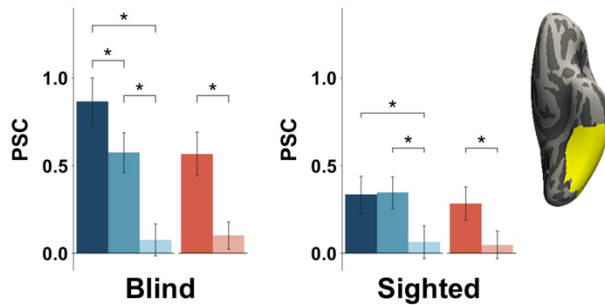


Figure S3. Responses in (A) left and (B) right vOTC across posterior, middle and anterior subregions for blind and sighted groups during the reading (blue colors) and listening (orange colors) tasks using the words > control (false font/shape) contrast to identify individual functional ROIs. C. Response of left vOTC (upper left), left IFC (upper right), left V1 (lower left) during reading (blue colors) and listening (orange colors) tasks using the words > controls functional ROIs for blind and sighted groups. Error bars denote standard errors +/- the mean. Asterisks (*) denote significant Bonferroni-corrected pairwise comparisons within task ($p < .05$). T = tactile, V = visual.

T/V consonant strings > T/V control

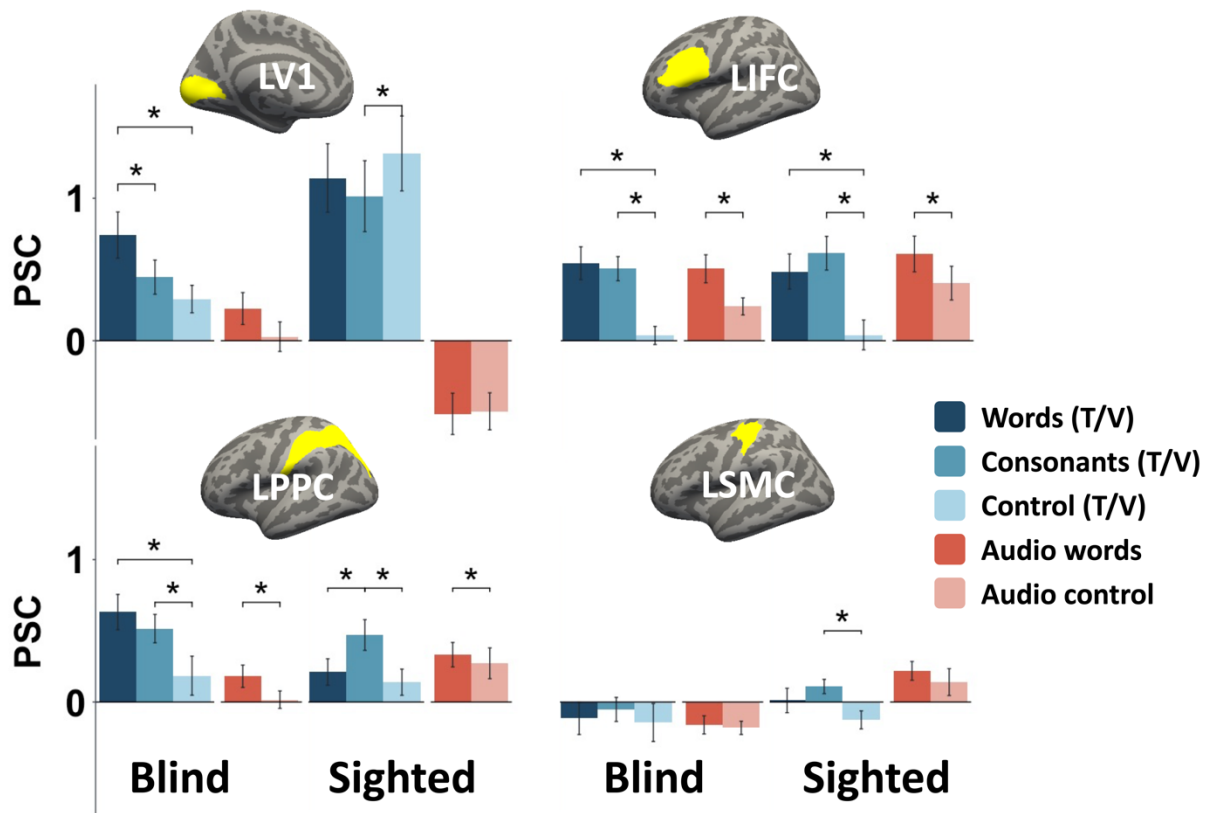


Figure S4. Responses in left V1 (upper left), IFG (upper right), PPC (lower left), and SMC (lower right) ROIs for blind and sighted groups during the reading (blue colors) and listening (pink colors) tasks using the consonant strings > controls functional ROIs. This figure is identical to main text Figure X, except that it additionally includes the auditory conditions. Error bars denote standard errors \pm the mean. Asterisks (*) denote significant Bonferroni-corrected pairwise comparisons within the task ($p < .05$). T = tactile, V = visual.

T/V words > T/V control

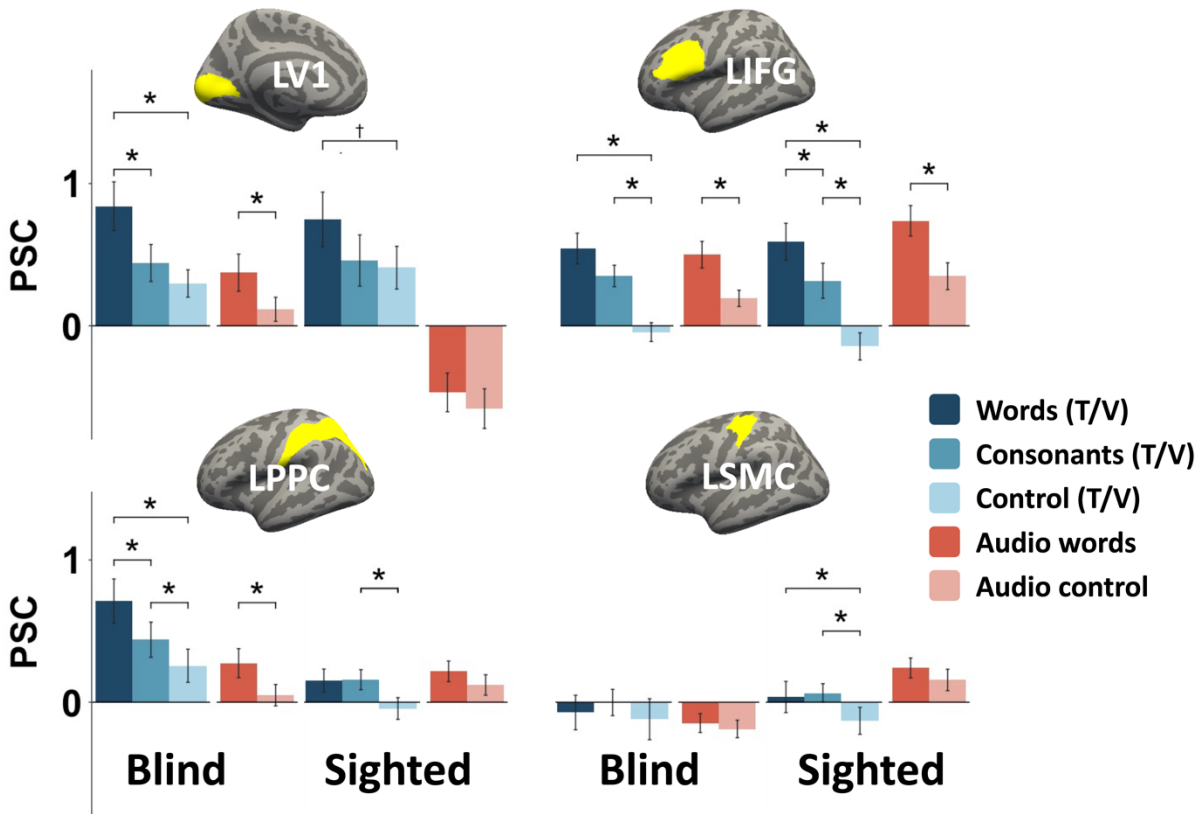


Figure S5. Responses in left V1 (upper left), IFG (upper right), PPC (lower left), and SMC (lower right) ROIs for blind and sighted groups during the reading (blue colors) and listening (pink colors) tasks. Error bars denote standard errors +/- the mean. Asterisks (*) denote significant Bonferroni-corrected pairwise comparisons within the task ($p < .05$). T = tactile, V = visual.

