

Spatially resolved whole transcriptome profiling in human and mouse tissue using Digital Spatial Profiling

Stephanie M. Zimmerman¹, Robin Fropf¹, Bridget R. Kulasekara¹, Maddy Griswold¹, Oliver Appelbe¹, Arya Bahrami¹, Rich Boykin¹, Derek L. Buhr¹, Kit Fuhrman¹, Margaret L. Hoang¹, Quoc Huynh¹, Lesley Isgur¹, Andrew Klock¹, Aleksandr Kutchma¹, Alexa E. Lasley¹, Yan Liang¹, Jill McKay-Fleisch¹, Karen Nguyen¹, Erin Piazza¹, Aric Rininger¹, Daniel R. Zollinger¹, Michael Rhodes¹, Joseph M. Beechem^{1*}

1. NanoString® Technologies, Inc., Seattle, WA 98109, USA

*Corresponding author: jbeechem@nanostring.com

Running Title: Spatially resolved whole transcriptome profiling

Abstract

Emerging spatial profiling technology has enabled high-plex molecular profiling in biological tissues, preserving the spatial and morphological context of gene or protein expression. Here we describe expanded chemistry for the Digital Spatial Profiling platform to quantify whole transcriptomes in human and mouse tissues using a wide range of spatial profiling strategies and sample types. We designed multiplexed *in situ* hybridization probe pools targeting the protein-coding genes in the human and mouse transcriptomes, hereafter referred to as the human or mouse Whole Transcriptome Atlas (WTA). We validated the human and mouse WTA assays using cell lines to demonstrate concordance with orthogonal gene expression profiling methods in profiled region sizes ranging from ~10-500 cells. By benchmarking against bulk RNAseq and single-molecule fluorescence *in situ* hybridization, we demonstrate robust transcript detection possible down to ~100 transcripts per region. To assess the performance of WTA across tissue and sample types, we applied WTA to biological questions in cancer, molecular pathology, and developmental biology. We show that spatial profiling with WTA can detect expected spatial gene expression differences between tumor and tumor microenvironment, identify spatial disease-specific heterogeneity in gene expression in histological structures of the human kidney, and comprehensively map transcriptional programs in anatomical substructures of nine organs in the developing mouse embryo. Digital Spatial Profiling technology with the WTA assays provides a flexible method for spatial whole transcriptome profiling applicable to diverse tissue types and biological contexts.

Introduction

The organization of tissues and organs is complex and spatial relationships between cells and structures are key to their development, normal functioning, and pathophysiology. Recently, several methods have emerged for multiplexed spatial profiling of RNA or proteins, leading to discoveries in oncology, infectious disease, developmental biology, and other fields (Rao et al.

2021; Brady et al. 2021; Butler et al. 2021; Pelka et al. 2021; Jerby-Arnon et al. 2021; Desai et al. 2020; Rendeiro et al. 2021; Merritt et al. 2020). Existing spatial gene expression platforms operate at a range of spatial scales and plex. For example, Slide-Seq and Spatial Transcriptomics platforms capture mRNAs across pre-patterned spot arrays and sequence them to provide transcriptome-wide coverage (Vickovic et al. 2019; Ståhl et al. 2016; Stickels et al. 2021). However, a limitation of these methods is that the spot boundaries do not correspond to natural morphological features of the tissue. Imaging-based in situ hybridization methods, such as multiplexed error-robust fluorescence in situ hybridization (MERFISH) and fluorescent in situ sequencing (FISSEQ) (Chen et al. 2015; Lee et al. 2015; Xia et al. 2019), can spatially resolve thousands of transcripts at single-cell resolution but require complex instrumentation and long experiment times.

Digital Spatial Profiling (DSP) is a recently developed platform for multiplexed spatial RNA or protein expression profiling in flexible user-defined regions of interest (Merritt et al. 2020). DSP relies on affinity reagents (probes for RNA and antibodies for protein detection) attached to indexing oligonucleotide tags with a UV-photocleavable linker. The probes or antibodies are hybridized to a slide-mounted tissue sample that is also stained with fluorescent antibodies or probes to aid in the identification of features of interest. The tissue is imaged using fluorescence microscopy and UV light is projected onto the region to be profiled, called areas of illumination (AOIs), to release the oligo tags from that region. The liberated tags are collected and counted using the nCounter[®] system or by next-generation sequencing (NGS). In the first demonstration of the DSP technology (Merritt et al. 2020), 44 proteins and 84 genes were multiplexed using nCounter, and 1,412 genes were profiled by NGS readout.

Here we report the expansion of the DSP RNA profiling technology to measure the expression of >99.5% and >98.2% of protein-coding genes of the human or mouse transcriptome, respectively. For all annotated genes, we designed in situ hybridization (ISH) probes with a barcoded UV-cleavable tag that can be read out by NGS. The probes for each species were

pooled to create the human and mouse Whole Transcriptome Atlases (WTAs). We demonstrate that both the human and mouse WTA assays have high concordance with orthogonal gene expression profiling methods, and can produce transcriptome-scale spatial information across a wide variety of tissue contexts, profiling strategies, and region sizes.

Results

Design of multiplexed probes targeting the human and mouse whole transcriptomes

The human or mouse WTA consists of species-specific ISH probes designed to target the protein-coding genes of the human or mouse transcriptome. The probes contain three functional regions: an RNA-targeting region, a UV-photocleavable linker, and an indexing sequence designed to be read out by NGS. The indexing sequence contains a Unique Molecular Identifier (UMI), a barcode sequence that identifies the probe, and primer binding sequences for amplification and subsequent readout by standard NGS workflows (Fig. S1). The probe identification barcodes were designed to have a minimum Hamming distance of ≥ 2 between barcodes.

We designed 18,815 human and 20,175 mouse probes targeting >99.5% of annotated protein-coding genes in human and >98.2% of annotated protein coding genes in mouse (Table S1). To reduce sequencing requirements and optimize readout efficiency by NGS, probes targeting mitochondrially encoded genes and an additional 10 human and 2 mouse highly expressed nuclear-encoded genes were intentionally removed (see Methods). Mouse WTA also includes probes targeting 17 commonly used transgenes. We additionally designed 139 negative control probes in human WTA and 210 negative control probes in mouse WTA against synthetic sequences from the External RNA Controls Consortium (ERCC) set (Baker et al. 2005). The ERCC sequences have the same properties as mammalian sequences but without similarity to any known transcripts. This was confirmed by BLAST comparison to each transcriptome for all selected negative sequences. The signal from the negative control probes is used to define the

background level of non-specific binding and set a limit of detection (LOD) in each profiled region (Fig. S1).

RNA-targeting regions range in size from 35-50 nucleotides and were selected based on an iterative design process that considers thermodynamic profile, splice isoform coverage, potential for cross-hybridization with other transcripts, and potential for intramolecular interactions between probes within an assay (see Methods). Probes were synthesized individually and pooled, and the pools were sequenced to ensure that 100% of designed probes were present and that the coefficient of variation of probe concentration was less than 20%.

WTA data are reproducible and well correlated with RNAseq and RNA FISH in cell lines

We first benchmarked the performance of the human and mouse WTAs in homogeneous formalin-fixed paraffin embedded (FFPE) cell pellet arrays (CPAs) to test reproducibility and compare to orthogonal methods of measuring gene expression. Because DSP allows flexible selection of the areas of illumination on the tissue (AOIs), it is possible to profile regions of various sizes ranging from <10 cells to thousands of cells. As there is a tradeoff between the number of cells profiled and signal, we benchmarked the performance of WTA in AOIs ranging from 50-400 μm diameter circles in human and mouse FFPE CPAs containing 11 cell lines each (Fig. 1A). In cell pellets, 50 μm diameter AOIs contained an average of 12 cells in human cell lines and 13 cells in mouse cell lines, while 400 μm diameter AOIs contained an average of 480 and 505 cells in human and mouse, respectively. Raw counts were highly reproducible between two independent experiments for all cell lines and AOI sizes tested ($R = \sim 0.75$ for 50 μm AOIs, and ~ 0.95 for 400 μm AOIs for all genes) for both human and mouse WTAs (Fig. 1B).

We asked whether we could correctly classify these cell lines based on WTA signal, comparing to bulk RNAseq of the same set of cell lines. Bulk RNAseq data were either generated for this study or acquired from publicly available data from the Cancer Cell Line Encyclopedia (CCLE) project (Ghandi et al. 2019) (see Methods). We found that classification was 100%

accurate at all AOI sizes. For all 11 human and 11 mouse cell lines, the correct matching cell line had the highest correlation coefficient between WTA and bulk RNAseq. Correlation coefficients with the matching cell line were ~0.7 in 50 μm diameter circle AOIs and increased to >0.8 in 400 μm diameter circle AOIs, and were similar for human and mouse WTA (Fig. 1C).

We next tested whether we could accurately quantitate gene expression with WTA. For these experiments, we used a mixed-proportion FFPE (human) or fixed frozen (mouse) CPA with one cell line titrated into another at variable ratios to provide a graded scale of gene expression for genes exclusively expressed in one cell line or the other. We selected 10 human genes and 8 mouse genes that are exclusively expressed in one cell line based on bulk RNAseq data. For each gene, WTA signal was compared to FISH signal using RNAscope probes (Wang et al. 2012) (Fig. 1D). We found that WTA and FISH signals were highly correlated for all genes tested, with an average Pearson correlation coefficient of 0.90 for human and 0.93 for mouse (Fig. 1E). These results indicate that WTA can accurately quantify gene expression across the biological range.

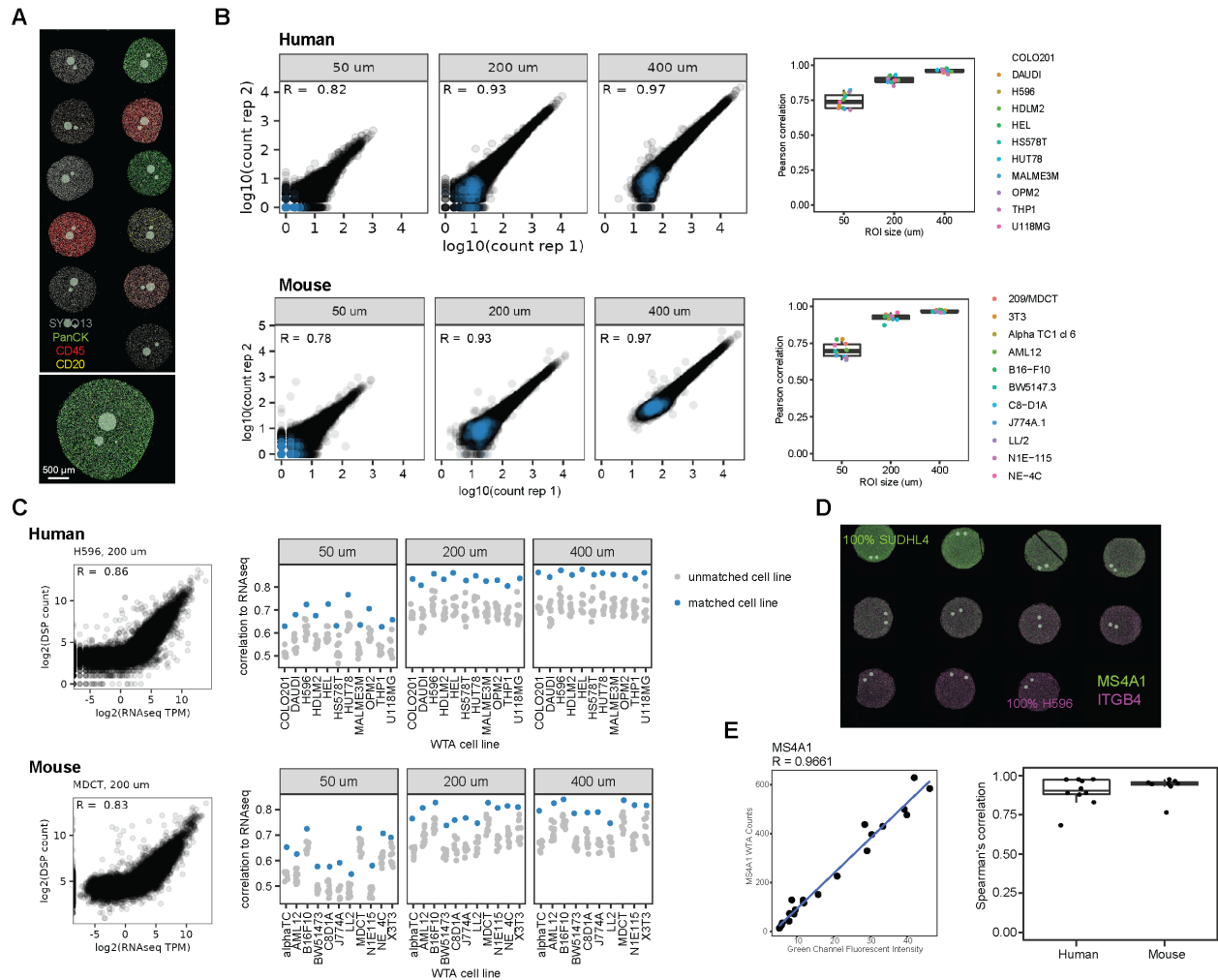


Figure 1. Human and mouse WTA data are reproducible and correlated with RNAseq and RNA FISH. A. Representative image of the AOI size titration experiment. Circular AOIs 50 μm , 200 μm , and 400 μm in diameter were placed on each cell line of an 11-core human or mouse FFPE cell pellet array (human shown, stained with antibodies against CD3, CD45 and pan-cytokeratin (PanCK), and SYTO13 nuclear stain). **B.** Reproducibility of WTA counts from two replicate experiments. Left: scatterplots of \log_2 -transformed raw counts from one representative human or mouse cell line (HUT78 for human, 3T3 for mouse) at each AOI size from each replicate. Negative control probes are shown in blue and target probes in black. Right: Pearson correlation coefficients of \log_2 -transformed raw counts between replicates for each cell line and AOI size. **C.** Left: scatterplots of WTA counts vs RNAseq transcripts per million (TPM) from the same cell line

for one representative human or mouse cell line in a 200 μm AOI. Right: Spearman's correlation of WTA counts compared to RNAseq of each cell line profiled in this experiment. For each AOI, the matching cell line is shown in blue and all other cell lines in grey. **D.** Representative image of the cell line titration experiment. Cell pellets contained one cell line titrated into the other at a variable ratio. Cells were stained with RNAscope probes against two genes specifically expressed in each of the two cell lines (ITGB4 expressed in H596 cells and MS4A1 expressed in SUDHL4 cells in the image shown). **E.** Left: Representative scatterplot comparing WTA counts for MS4A1 to RNAscope fluorescence intensity for the same gene across cell pellets. Right: Spearman's correlation of WTA counts compared to RNA FISH fluorescence intensity for each gene profiled in this experiment.

Sensitivity, specificity, and limit of detection of WTA in different sized AOIs

We next investigated the sensitivity and specificity of the WTA assay to detect gene expression above background in different sized AOIs. Using genes with RNAseq transcripts per million (TPM) > 1 as the true set of expressed genes, we calculated the overall sensitivity and specificity of WTA in cell pellets using different thresholds of signal above background. As expected, discrimination increased with AOI size, and was similar between mouse and human WTAs (Fig. 2A). Using an LOD of 2 standard deviations above the negative probe signal as a threshold for calling a gene expressed, sensitivity over all genes was 50% in 50 μm diameter-circle AOIs, 68% in 200 μm AOIs, and 81% in 400 μm AOIs for human WTA, and 48% in 50 μm AOIs, 66% in 200 μm AOIs, and 75% in 400 μm AOIs for mouse WTA. Specificity was >95% for all sizes in both panels. Overall, we detected an average of ~6000 genes above background per AOI in 50 μm AOIs, and ~9000 genes in 400 μm AOIs (Fig. 2B).

WTA signal is linearly correlated with RNAseq and single-molecule RNA FISH (smFISH) above a certain gene expression threshold, below which WTA does not detect signal (Fig. 2A and S2). To determine the LOD of WTA relative to absolute transcript number, we integrated human

WTA FFPE CPA data with RNAscope smFISH experiments in which we counted the number of transcripts per cell for 20 genes in 11 cell lines (Fig. 2C). To identify the point at which WTA begins to detect signal in different sized AOIs, we performed breakpoint analysis, which fits two line segments to the data and iteratively calculates the breakpoint at which the model best fits the data. In 50 μm diameter AOIs containing an average of 13 cells, we found that the breakpoint was ~ 2 transcripts per cell. In larger AOI sizes with >50 cells, the breakpoint was 0.5-0.6 transcripts per cell (Fig. S2), suggesting that WTA can begin to detect genes expressed above this level.

Using genes with expression ≥ 1 expressed transcript per cell as measured by smFISH as the true set of expressed genes, we calculated WTA sensitivity for targets with different levels of gene expression. Highly expressed targets (>10 transcripts per cell) were detected with a sensitivity of $>80\%$ in 50 μm diameter AOIs and 90-100% in larger AOIs. On the other extreme, very lowly expressed targets (1-2 transcripts per cell) were detected with a sensitivity of $\sim 75\%$ in the largest AOIs with >500 cells and progressively less frequently detected in smaller AOIs (Fig. 2D). By combining the average number of transcripts per cell with the number of cells present in each AOI, we calculated sensitivity at different numbers of transcripts per AOI. At >100 transcripts per AOI, sensitivity was $>70\%$ (Fig. 2E). These results indicate that WTA can detect and quantify genes expressed at ~ 100 transcripts per AOI in AOIs ranging from 10-500 cells.

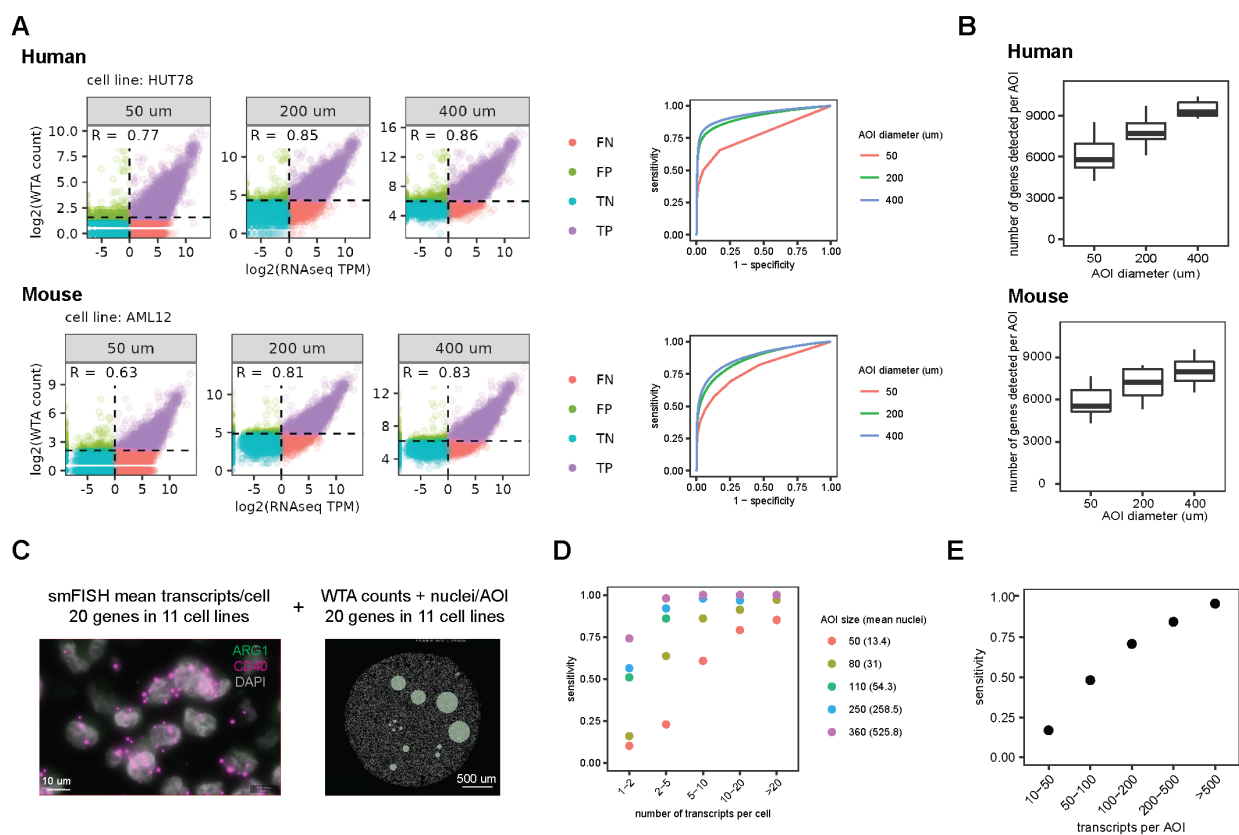


Figure 2. WTA has high sensitivity and can detect genes at a range of expression levels depending on AOI size. A. Left: Scatterplots comparing WTA counts to RNAseq for one representative cell line at each AOI size, colored by whether the gene is detected above the expression threshold in WTA and in RNAseq. Dashed lines indicate thresholds for calling a gene “expressed” as 2 standard deviations above the geometric mean of negative probes for WTA, and $\text{TPM} > 1$ for RNAseq. TP = true positive, FP = false positive, TN = true negative, and FN = false negative. Right: Receiver-operator curves demonstrating the sensitivity and specificity of WTA at different expression thresholds using genes with RNAseq $\text{TPM} > 1$ as the true set of expressed genes. **B.** Number of genes per AOI above the expression threshold of 2 SD above the mean negative probe count at each AOI size. **C.** Representative images of the experiment to determine the sensitivity of human WTA relative to absolute transcript number. Left: RNAscope smFISH image of two genes in one cell line of the 20 genes in 11 cell lines quantified in this experiment. Right: DSP image of one cell line with an AOI size titration. **D.** Sensitivity of WTA at different AOI

sizes for genes in different gene expression bins as measured by RNAscope. Genes ≥ 1 transcript per cell were considered expressed. **E.** Sensitivity of WTA for genes binned by transcripts per AOI, calculated using transcripts per cell quantified by RNAscope and the number of cells in each AOI.

WTA is compatible with multiple sample types and mouse strains

For the initial demonstration of the DSP technology, FFPE samples were used (Merritt et al. 2020). To expand the range of sample preparation types available for DSP, we designed and tested protocols for the use of WTA on human fresh frozen (FF) and mouse fixed frozen (FxF) samples (see Methods). To assess the performance of WTA on these additional sample types, we placed matched 200 μm diameter circular AOIs on FFPE and FxF mouse CPAs and FFPE and FF human tonsil tissue. The correlation of WTA counts was >0.8 comparing FFPE to either FxF or FF, and the distribution of signal to background ratios across genes was similar between sample preservation types (Fig. S3). These results indicate that WTA results are concordant between FFPE and fixed frozen mouse and fresh frozen human tissues.

Specifically for mouse samples, we asked whether mouse WTA can accurately quantify gene expression in strains other than C57BL/6, which was used to generate the mouse reference transcriptome to which the panel was designed. To this end, we profiled an FFPE tissue array consisting of 7 different organs for each of 3 commonly used mouse strains (C57BL/6, BALB/c, and NOD/ShiLt) (Fig. S4). Although transcriptional differences exist between strains due to true biological differences, these differences are known to be minimal (Breschi et al. 2017). We placed 300 μm diameter circular AOIs in similar regions of each tissue for each mouse strain and compared the results from each strain across organs. The transcriptomes were well correlated for all organs and pairs of strains, with correlation coefficients ranging from 0.7-0.95. Clustering by gene expression showed that organs clustered together before mouse strains, and gene expression patterns across tissues were similar in all three strains. These results suggest that

despite small differences in the annotated transcriptomes, mouse WTA can be used to characterize gene expression in multiple strains.

Whole transcriptome profiling of segmented regions reveals differences in spatial gene expression between tumor and tumor microenvironment across a range of AOI sizes

One of the strengths of the DSP system is that users can profile regions defined by morphology or expression of marker genes. The DSP instrument can segment a region of interest based on antibody- or RNA FISH-based fluorescence signals, splitting a single-selected region into multiple AOIs (Fig. 3A). This feature enables different tissue compartments to be profiled separately even if they are spatially adjoining. We used this segmented AOI strategy to separate tumor and the tumor microenvironment (TME) to test whether WTA can detect expected differences in spatial gene expression differences in tissue. We also used this experiment as a model to assess the impacts of technical experimental design features (e.g. AOI size and sequencing depth) on WTA performance. Two serial FFPE sections from colorectal cancer (CRC) and non-small cell lung cancer (NSCLC) samples were labeled with fluorescent antibodies against pan-cytokeratin (PanCK) to mark tumor, CD45 to mark immune cells broadly, and CD3 to mark T cells. After labeling the tissue with these morphology markers, we selected regions of interest in different pathological areas of the tissue: tumor and hyperproliferative regions in CRC samples and tumor and invasive margin regions in NSCLC samples. Regions were segmented by fluorescent antibody signal into tumor (PanCK+) and TME (PanCK-) AOIs (Fig. 3B).

To assess the effect of AOI size on WTA performance, we selected a range of circular region sizes and binned the resulting segmented AOIs into 4 size bins by area, a metric that is well correlated with cell count. Area bins ranged from “very small” (<2300 μm^2 area, equivalent to a 55 μm diameter circle and with an average of 20 cells) to “large” (>49,000 μm^2 area, equivalent to a 250 μm diameter circle and with an average of 920 cells) (Fig. 3B). WTA counts were well correlated between large and smaller AOIs: large AOIs had a median Pearson correlation of 0.94

with each other and very small AOIs had a median correlation of 0.71 with large AOIs (Fig. 3F, Fig. S5). An increasing number of genes were detected above background in larger AOIs, with ~6000 genes detected per AOI in very small AOIs and ~11,000 genes detected in large AOIs (Fig. 3D). Genes detected in small AOIs were generally a subset of genes detected in large AOIs with very few genes detected only in small AOIs (Fig. S5). We also confirmed that samples clustered by biological annotation (tumor type and tumor vs TME) regardless of AOI size (Fig. 3E).

We compared gene expression of each segmented AOI with all bulk RNAseq datasets in The Cancer Genome Atlas (TCGA) (Weinstein et al. 2013) to ask whether we could accurately classify the tumor type. We found that our classification of tumor segments was 100% accurate regardless of AOI size. All tumor segments correlated best with the expected tumor datasets in TCGA: colon adenocarcinoma and rectal adenocarcinoma for the CRC samples and lung adenocarcinoma for the NSCLC samples (Fig. 3F). Correlation coefficients increased with AOI size, from ~0.6 in very small AOIs to ~0.8 in large AOIs. As expected, TME segments generally did not correlate best with the matching tumor types in TCGA. The TME likely does not make up a substantial fraction of the tumors sequenced in the bulk TCGA datasets, highlighting the value of segmentation for spatially identifying gene expression patterns.

We further examined whether we could detect the expected biological differences between tumor and TME in AOIs of different sizes. Immune-related pathways, such as interleukin signaling and tumor necrosis factor signaling, were enriched in TME, while pathways related to cell motility, proliferation, and cancer-associated signaling were enriched in tumors (Fig. S5). Using gene expression profiles of stroma and immune cells, we performed cell-type deconvolution to characterize the cell content of the tumor and TME segments (Danaher et al.). As predicted, the TME had higher abundance of immune cells than the tumor segments. Results of the immune pathway analysis and cell-type deconvolution were well correlated between large and smaller AOIs (Fig. 3F), demonstrating the robustness of the WTA assay for biological characterization across a wide range of AOI sizes.

In addition to AOI size, we also assessed the impact of sequencing depth on WTA data. All AOIs were deeply sequenced and reads were subsampled in silico from a read depth of 5 raw reads/ μm^2 to 300 reads/ μm^2 , which provided a range of sequencing saturations from ~10-80%. Five replicates of the subsampling were performed at each read depth. For each subsampled dataset, we compared the number of genes detected and correlations of counts, pathway enrichment results, cell-type deconvolution results, and differential expression results to the highest sequencing depth. For all metrics and AOI sizes, results were well correlated at all but the lowest sequencing depths and stabilized by 100 raw reads/ μm^2 (Fig. S6).

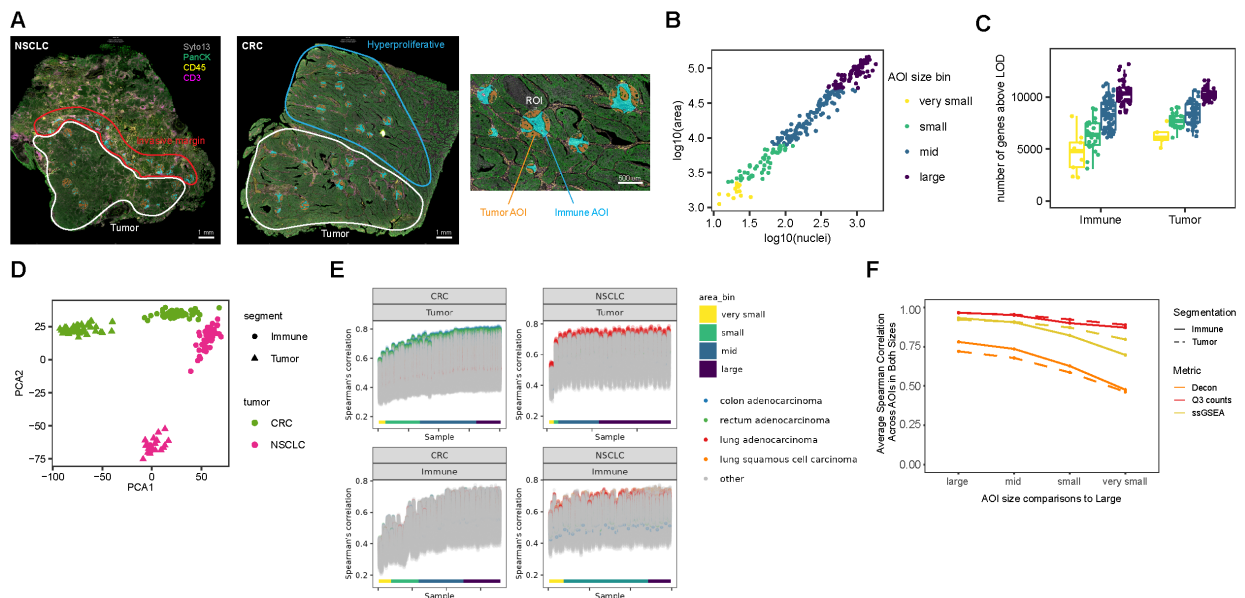


Figure 3. Effect of AOI size on biological conclusions from segmented tumors and tumor microenvironment. **A.** Left: Representative images of the colorectal cancer (CRC) and non-small cell lung cancer (NSCLC) samples. Tumor, invasive margin, and hyperproliferative regions are highlighted. Slides were stained with antibodies against PanCK, CD3, and CD45. Right: Enlarged region of the CRC image to highlight the size titration and segmentation strategy. Circular regions of interest were automatically segmented into PanCK+ tumor (orange) and PanCK- immune (blue) compartments. **B.** Scatterplot of AOI area vs number of nuclei with points colored by the

area bins used in the analyses in this figure. Very small: $<2300 \mu\text{m}^2$, small: $2300\text{-}7850 \mu\text{m}^2$, mid: $7850\text{-}49,000 \mu\text{m}^2$, large: $>49,000 \mu\text{m}^2$. **C.** Number of genes detected per AOI for tumor and immune compartments in each AOI size bin, colored as in B. **D.** Principal component analysis (PCA) of variation between samples using genes detected above background in $>20\%$ of AOIs. PCA1 vs PCA2 is plotted with points colored by tumor type and shaped by segment type. **E.** Spearman's correlation of WTA counts from each AOI with all RNAseq datasets in the TCGA database. AOIs are ordered by area on the x-axis, and each point is a pairwise comparison with a dataset in TCGA. All genes in common between each pair of datasets were used in the correlation. Points are colored by tumor type in TCGA: colon adenocarcinoma (blue), rectal adenocarcinoma (green), lung adenocarcinoma (red), and lung squamous cell carcinoma (orange). All other tumor types are colored in grey. AOIs are labeled by area bin. **F.** Correlation of counts, single-sample Gene Set Enrichment Analysis (ssGSEA) enrichment, and cell-type deconvolution between AOIs. For each of the three output metrics, Spearman's correlations were calculated between each AOI, and averaged within different AOI size bins compared to the largest AOI sizes. AOIs are split into groups based on segment type (tumor or immune).

Profiling transcriptomes of anatomical structures in normal kidney and kidney disease

To demonstrate the capability of WTA to integrate the transcriptome with annotated histological and pathological features of a tissue, we asked how the transcriptome is altered in anatomically distinct regions of the kidney with diabetic kidney disease (DKD). The kidney nephron has a complex structure that includes the glomerulus, a cluster of specialized cells that forms the filtration barrier, and the tubule., which reabsorbs water and small molecules and has different functions along its length. The effects of DKD on the glomeruli have been well studied, such as a loss of glomerular filtration, inflammation, and immune cell infiltration (Reidy et al. 2014; Thomas et al. 2015). However, DKD affects all parts of the kidney. Therefore, we used WTA to profile the

transcriptome of three nephron substructures: the glomeruli, the proximal convoluted tubules, and the distal convoluted tubules.

We profiled three normal and four DKD FFPE human kidney samples. To identify and discriminate kidney structures, three fluorescently labeled antibodies targeting epithelia (PanCK), immune cells (CD45), and podocytes (WT1) in glomeruli were used. Glomeruli and tubules were identified morphologically and polygon-shaped AOIs were drawn to capture each structure. Tubules were segmented based on the PanCK signal into proximal (PanCK-) and distal tubules/collecting duct (PanCK+) (Fig. 4A). Within each sample, individual glomeruli were annotated by a pathologist for severity of disease-related changes using both the fluorescence images and hematoxylin and eosin (H&E) images of serial sections. The data were collected from both relatively healthy and more abnormal glomeruli in both normal and DKD samples (Fig. 4B).

Overall, we profiled 231 AOIs that passed quality filters, across which we detected and quantified 16,084 genes. AOIs clustered by region and by disease status more closely than by patient (Fig. 4C, Fig. S7). In normal kidneys, we identified over 6000 significantly differentially expressed genes between glomeruli and tubules, and over 8000 differentially expressed genes between proximal and distal tubules. We found a strong concordance between genes differentially expressed in our study and those differentially expressed between cell types in kidney single-cell RNAseq (Young et al. 2018) (Fig. S7). In this study, differentially expressed pathways between glomeruli, proximal, and distal tubules recapitulated known aspects of kidney biology. For example, pathways specifically enriched in proximal tubules included anion and amino acid transporters, which are known to be highly expressed in proximal tubules, while bicarbonate transporters were enriched in both proximal and distal tubules. Pathways enriched in glomeruli include nephrin and SEMA3A signaling, which are key proteins expressed in cells of the glomerular filtration membrane (Reidy and Tufro 2011; Martin and Jones 2018) (Fig. 4D).

With DKD, we observed 2400 differentially expressed genes across the different kidney substructures compared to normal kidney samples. For most genes dysregulated with disease,

expression changes were correlated across the different anatomical structures, but some structure-specific genes were altered with disease (Fig. 4E). For example, the gene *PCOLCE2* is only expressed in glomeruli and is substantially downregulated with disease. Expression of this gene has been observed in glomerular podocytes, a specialized cell that forms the glomerular filtration barrier, and lower expression correlates with loss of renal function in chronic kidney disease patients (Ju et al. 2013). Similarly, aquaporin genes such as *AQP2* and *AQP3* are strongly downregulated in the distal tubules with disease. This family of genes encodes water channels necessary for concentration of urine by the kidneys and is specifically expressed in tubules (Nielsen et al. 1999). These results indicate that DKD can cause loss of substructure-specific and cell type-specific gene expression critical for normal kidney function.

Loss of glomerular podocytes and increased immune cell infiltration are known to be hallmarks of DKD. We recapitulated this phenotype using cell-type deconvolution, observing a marked loss of podocytes in glomeruli and increased abundance in almost all types of immune cells in all substructures (Fig. 4F, Fig. S7). Interestingly, we identified that the loss of podocytes was heterogeneous across individual glomeruli. Even within diseased or normal samples, pathologically abnormal glomeruli had a more profound loss of podocytes and higher levels of immune infiltration compared to glomeruli with fewer pathological features. In particular, the abundance of B cells, natural killer cells, and mononuclear phagocytes increased in diseased kidneys but the increase was significantly higher in more severely pathologically abnormal glomeruli (Fig. 4F, Fig. S7). This spatial heterogeneity was observed within individual diseased kidneys (Fig. 4G), indicating that some glomeruli are more affected by disease despite close physical proximity. In total, these results demonstrate the feasibility of whole transcriptome profiling of specific organ substructures to detect spatially variable disease-related abnormalities.

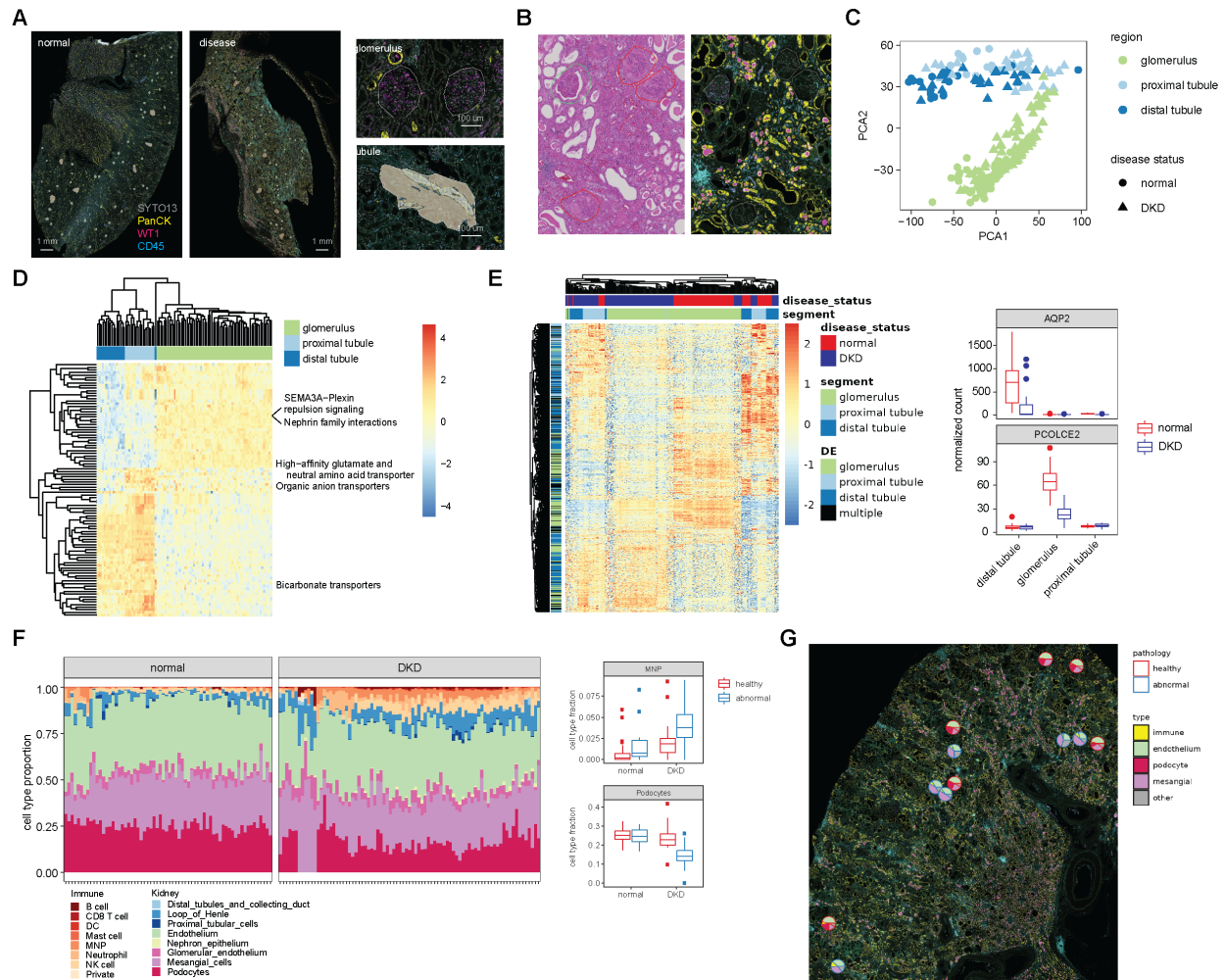


Figure 4. Spatial heterogeneity in gene expression changes associated with diabetic kidney disease in human kidneys. A. Left: Representative fluorescence images of normal and diabetic human kidneys. Tissues were stained with antibodies against PanCK, WT1, and CD45. Right: Example images from normal kidney highlighting the AOI strategy. Glomeruli were profiled using polygon-shaped AOIs, and tubules were automatically segmented in proximal tubules (PanCK-) and distal tubules (PanCK+). **B.** Individual glomeruli in each kidney sample were annotated by degree of pathology. A representative H&E image (left) and fluorescence image (right) from the same region of a diabetic kidney specimen are shown. Glomeruli with higher degree of abnormality are circled in red, while those that are more normal are circled in green. **C.**

Principal component analysis of variation between samples using genes detected above background in >1% of AOIs. PCA1 vs PCA2 is plotted, with substructure indicated by color and disease status indicated by shape. **D.** Heatmap of ssGSEA enrichment of the most differentially expressed Reactome pathways between substructures in normal kidney samples. Enrichment was computed using genes detected above background in >1% of AOIs. Columns and rows are clustered by hierarchical clustering and the data are scaled by row. All displayed pathways are significant at false discovery rate (FDR) <0.05. **E.** Left: Heatmap of most differentially expressed genes between normal and DKD in glomeruli, distal tubules, and proximal tubules. All genes are significant at FDR <0.05 and a fold change of >1.5. Genes are annotated by the structure in which they were significantly differentially expressed, or “multiple” for the genes significant in more than one structure. Columns and rows are clustered by hierarchical clustering and the data are scaled by row. Right: Boxplot of normalized counts for two example genes in normal and DKD glomeruli, proximal tubules, and distal tubules. **F.** Left: Results of cell-type deconvolution of glomeruli using single-cell expression data from (Young et al. 2018). Data are displayed as stacked barplots with each bar as a single AOI and the estimated proportion of each cell type colored, and faceted by disease status. Right: Boxplots of proportions of two example cell types with significantly different proportions in normal and DKD glomeruli (t-test Bonferroni-corrected p-value <0.05), colored by whether the glomerulus was annotated as pathologically abnormal or healthy. **G.** Pie charts overlaid over the fluorescence image of a single kidney showing the proportion of different glomerulus and immune cell types for each glomerulus profiled in a representative disease sample. Each plot is outlined based on pathological annotation: abnormal glomeruli (blue), healthy glomeruli (red).

Identifying organ substructure-specific transcriptomes in the developing mouse embryo

One anticipated use of WTA is to catalog spatial gene expression profiles in histological structures and anatomical regions across organs. To demonstrate the utility of WTA for building spatial organ

atlases, we profiled whole transcriptomes of different organs and organ substructures in a developing mouse embryo. A single fixed-frozen E13.5 mouse embryo was sectioned along the sagittal plane. Six sections spanning the embryo were stained with antibodies against TRP63 (epithelial marker) and β 3 tubulin (neuronal microtubule marker) and hybridized with mouse WTA probes (Fig. 5A).

AOIs were selected in 9 organs across the 6 sections (heart, lung, metanephros, pancreas, midgut, duodenum, stomach, esophagus, and trachea). Within each organ, freeform polygon-shaped AOIs were drawn to capture morphologically distinct substructures using anatomical features identified using both the fluorescence image and an H&E-stained serial section (Fig. 5B, Fig. S8). For example, in the developing heart, we placed AOIs in the ventricle wall, atrium wall, trabeculae, conductive fibers, and valves. In the stomach, esophagus, duodenum, and midgut, we selected AOIs in the epithelial, neural, and mesenchymal layers.

Overall, we profiled the whole transcriptome of 347 AOIs across the nine organs and 2-5 substructures per organ. We identified 17,662 genes expressed above background, indicating that in diverse tissues nearly the entire transcriptome is detectable by WTA. Examining the spatial expression of cell-type-specific marker genes showed the expected patterns; for example, the epithelial marker *Epcam* is expressed in epithelial AOIs in all tissues while the mesenchymal marker *Mest* is highly expressed in the mesenchyme and heart but not in the epithelial AOIs. We observed that genes known to be highly expressed in specific tissues were restricted to the expected tissue, but still show spatial variability within a tissue. For example, the lung transcription factor *Nkx2-1* was expressed in the lung and trachea epithelium, as has been previously reported (Minoo et al. 1999), and the kidney transcription factor *Pax2* was specifically expressed in AOIs in the metanephros cortex (Bouchard et al. 2002; Minoo et al. 1999) (Fig. 5B).

Clustering AOIs by gene expression reveals that heart AOIs cluster separately from the other organs, and that for the non-heart AOIs similar substructures cluster together first, and then by organ. Epithelial AOIs form one cluster, as do mesenchymal and neuron AOIs. Within each

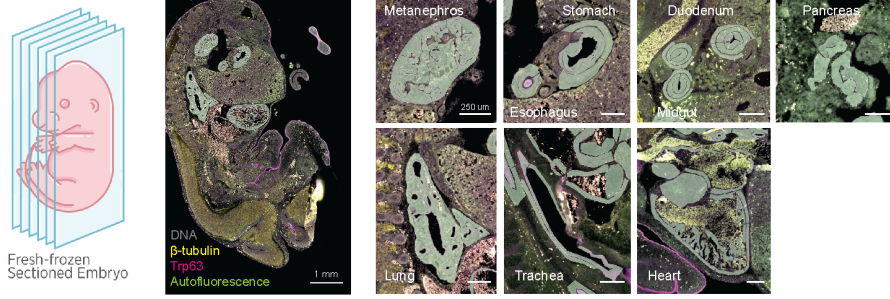
substructure, both common and tissue-specific genes can be identified. Across the epithelial AOs, shared highly expressed genes include known epithelial markers *Cdh1* and *Krt18*. Among tissue-specific epithelial genes, *Trp63* was expressed only in the epithelium of the esophagus and trachea, matching the expression pattern of the TRP63 antibody morphology marker used in this study (Fig. 5C).

As most of the organs profiled have an epithelial and mesenchymal region, we identified genes differentially expressed between organs in these two cell types (Fig. 5D). Organ-specific genes were nearly non-overlapping between epithelium and mesenchyme, highlighting the value of capturing substructure-specific transcriptomes over bulk organ gene expression profiling. Amongst the top organ-specific genes include key developmental transcription factors: *Nkx6-1*, a critical regulator of pancreas β cell development (Aigha and Abdelalim 2020), was uniquely expressed in the pancreas epithelium; *Cdx2*, an intestine-specific transcription factor necessary for intestine differentiation (Gao et al. 2009), was expressed in the duodenum and midgut epithelium; and *Barx1*, which is necessary for stomach differentiation (Kim et al. 2005), was localized to the stomach mesenchyme.

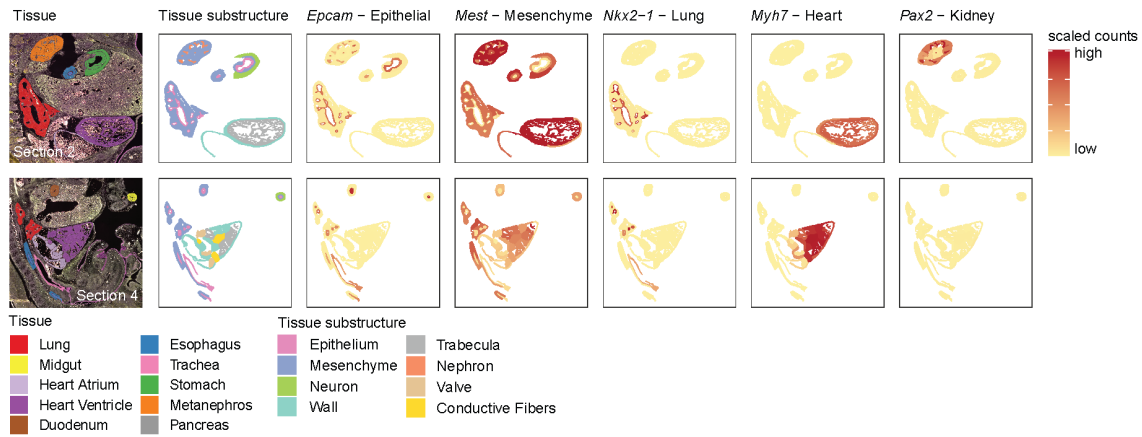
As developmental transcription factors were among the most differentially expressed genes across organs and organ substructures, we next asked whether our data could recapitulate the known developmental specification of the digestive system in mid-gestation embryos. Around E13, the transcription factors *Sox2*, *Gata4*, *Pdx1*, and *Cdx2* are localized in an overlapping pattern from anterior to posterior in the developing esophagus, stomach, and intestine and are necessary for proper specification of those tissues. For example, *Sox2* is expressed in the developing esophagus and stomach, while *Cdx2* is expressed in the intestine. Loss of *Cdx2* in the intestine leads to the misexpression of *Sox2* in that tissue and the ectopic expression of stomach and esophageal markers (Kumar et al. 2019; Willet and Mills 2016). Our data accurately recapitulated this known pattern of transcription factor expression across tissues and also revealed spatial patterns within each tissue (Fig. 5E). All four transcription factors were predominantly located to

the epithelium in each tissue, and *Pdx1* is more highly expressed in the liver proximal section of the duodenum than the distal section. Furthermore, we examined the expression of pro-intestinal targets of *Cdx1* in digestive system AOs (Raghoebir et al. 2012). Several canonical *Cdx2* targets, such as *Cdh17*, were expressed in the same spatial pattern as *Cdx1*, which is limited to the intestinal epithelium. However, others were expressed more broadly or more narrowly, such as *Hnf1a* and *Hnf4a*, which were also expressed in stomach epithelium, and *Heph*, which was also expressed in the intestinal mesenchyme, suggesting more complex regulation governing the expression of these genes (Fig. 5F). Overall, these results demonstrate the capacity of WTA to reveal the complex spatial gene expression patterns governing key cell fate decisions during embryonic development.

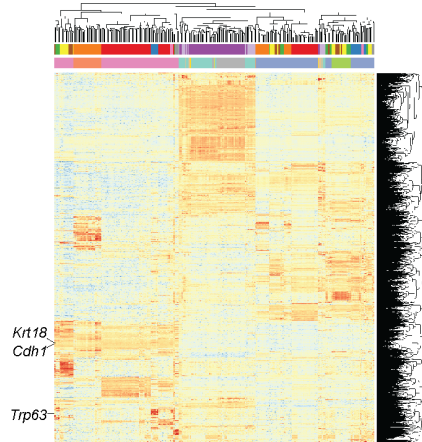
A



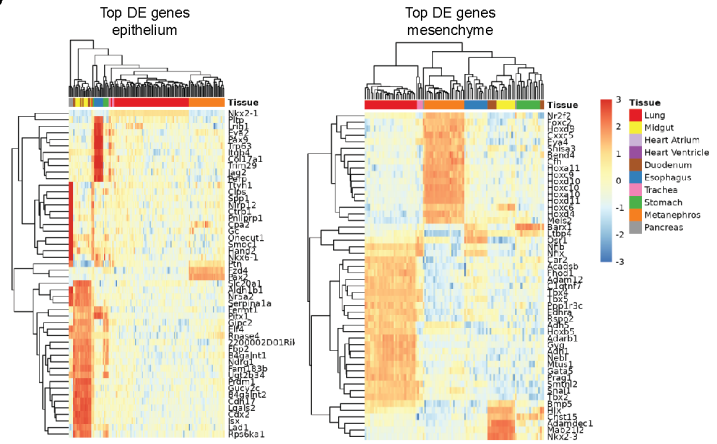
B



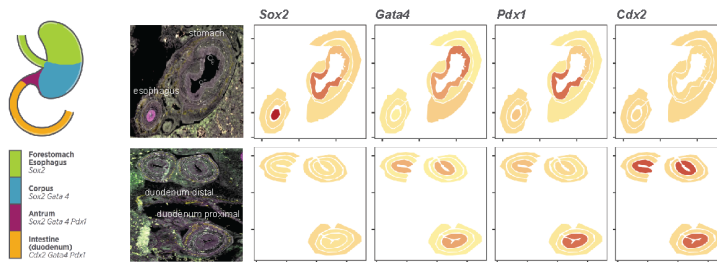
C



D



E



F

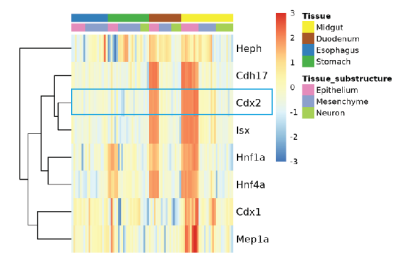


Figure 5. Spatial profiling of transcriptional programs during organogenesis in a mid-gestation mouse embryo. **A.** Left: Schematic and representative image of the fixed-frozen E13.5 mouse embryo profiled. Sections were labeled with antibodies against TRP63 (magenta) and β 3 tubulin (yellow). Autofluorescence is shown in green. Right: Example images of each organ profiled showing the AOI profiling strategy. Freeform polygon AOIs capture anatomical substructures of each organ. **B.** Expression of marker genes for specific organs and cell types in two example sections. Tissue, tissue substructure, or normalized scaled count for five genes is plotted over the shape of each AOI. **C.** Heatmap showing scaled expression of the 2000 most variable genes across the dataset. Columns and rows are clustered by hierarchical clustering and columns are annotated by organ and organ substructure. **D.** Heatmaps showing scaled expression of the top 50 most differentially expressed genes in epithelium (left) and mesenchyme (right). All genes shown are significant at Bonferroni-corrected p-value < 0.01. Columns and rows are clustered by hierarchical clustering and columns annotated by organ. **E.** Left: Schematic of key transcription factor expression in stomach and gut development (adapted from (Willet and Mills 2016)). Right: Expression of the same transcription factors plotted on example AOIs from a representative section. **G.** Heatmap showing scaled expression of *Cdx2* and *Cdx2* target genes from (Gao et al. 2009) in esophagus, stomach, duodenum, and midgut AOIs. Columns and rows are clustered by hierarchical clustering and columns are annotated by organ and organ substructure.

Discussion

The Whole Transcriptome Atlas is a high-plex in situ hybridization method for spatial transcriptome profiling using the Digital Spatial Profiling platform. Here we describe the design, performance, and applications of two WTA assays, one for human and one for mouse. Each comprises >18,000 multiplexed probes targeting the protein-coding genes of the human or mouse transcriptome. We show that WTA data is reproducible and concordant with orthogonal gene

expression profiling methods, and can quantify genes with low, medium, and high expression depending on the size of the profiled region. We demonstrate the applications of WTA to human disease biology and mouse developmental biology and show that whole transcriptome data enables comprehensive pathway-level spatial analyses.

DSP technology allows flexible and customizable region selection that can trace the boundaries of anatomical structures or groups of specific cells. As a result, a wide range of AOI sizes are possible, from just a few cells to thousands of cells. We benchmarked the sensitivity of WTA using differently sized AOIs in homogeneous cell pellets, which have the advantage of not being confounded by spatial variation such that data can be directly compared with bulk RNAseq. We find that in AOIs with ~100 cells, we detect ~70% of the genes observed in bulk RNAseq, a high sensitivity given that that bulk RNAseq is based on tens to hundreds of thousands of cells as input. Using single molecule FISH, we demonstrate that this sensitivity is equivalent to <1 transcript/cell in AOIs of at least 100 cells, with ~100 transcripts required per AOI for robust detection. In tumor tissue, this sensitivity corresponds to detecting ~6000 genes in small AOIs with <20 cells, and >10,000 genes in large AOIs with hundreds of cells. Unsurprisingly, there is a tradeoff between WTA signal and AOI size: more genes detected above background, better coverage of low expressing genes, and higher reproducibility in larger AOIs. However, we demonstrate that WTA counts from small AOIs still correlate well with orthogonal gene expression methods, and that the results of downstream analyses such as clustering, differential expression, and pathway enrichment are relatively robust to AOI size. These findings demonstrate the range of profiling strategies that can be used to address specific experimental questions.

Transcriptome-scale spatial data enables a wide range of pathway-level downstream analyses. With WTA, we detect expected pathways enrichment in the glomeruli and tubules of human kidneys, and also demonstrate robust detection and spatial localization of the key transcription factors and their target genes in mouse organogenesis. Furthermore, methods such as cell-type deconvolution allow the integration of gene expression signatures from single-cell

RNAseq data with spatial data, enabling the localization of specific cell types in space. In this work, we demonstrate heterogeneity in cell type loss in diabetic kidney disease that can be linked to pathological annotation of the tissue. The integration of scRNAseq and WTA spatial analysis has been demonstrated in other contexts as well, including in pancreatic ductal adenocarcinoma to reveal that a malignant cell type identified by scRNAseq was spatially associated with higher immune infiltrations (Hwang et al.).

The development of a whole transcriptome panel for both human and mouse will enable a wide range of translational, clinical, and basic biology research. To promote these broad research applications, we have shown that WTA is compatible with a variety of tissue types and sample preservation methods (FFPE, fresh frozen, and fixed frozen). Moreover, we demonstrate successful WTA experiments in diverse normal and diseased human tissue, and in a wide range of tissues in adult and developing mice. One limitation of an ISH-based technology is that new probes must be designed to target each transcriptome of interest. However, we show that mouse WTA is compatible with the most commonly used mouse strains despite small differences in transcript sequence. In addition, WTA can be supplemented with custom-designed probes targeting additional transcripts of interest. For example, Delorey et al. used human WTA with an additional 26 probes designed against SARS-CoV-2 transcripts to create a spatial atlas of gene expression in different anatomical substructures and levels of virus infection in COVID-19 infected lungs (Delorey et al. 2021).

Spatial gene and protein expression profiling with DSP has enabled discoveries in many research fields including oncology, immunology, neuroscience, and infectious disease. WTA expands the capabilities of DSP RNA profiling from 1400 genes to the whole transcriptome and enables high-plex spatial profiling of both human and mouse tissues. Future research will combine spatial whole transcriptome profiling with complex annotations and sample timepoints to provide high-dimensional profiles of development, disease progression, and other biological processes.

Methods

Design of the Whole Transcriptome Atlas probes

The NCBI RefSeq reference transcriptomes for human (GRCh38.p13) and mouse (GRCm38.p6, C57BL/6) were used for design of human and mouse WTA, respectively. The genes targeted for design included all protein-coding genes with a few exceptions. Human protein-coding genes were determined based on the HUGO Gene Nomenclature Committee (HGNC) and designed according to the available RefSeq transcripts. Mouse protein-coding genes were determined based on Mouse Genome Informatics (MGI) and designed according to the available RefSeq transcripts. For mouse genes, we also considered the current status of genes in NCBI RefSeq and did not include those with poor status (Suppressed, Provisional, Model, or Inferred). Notably, 1450 protein-coding genes that exist in the MGI database had no available mRNA transcripts in RefSeq at the time of design. By comparison, that number in human was only 31 and included a few genes that should have been characterized as loci and not protein-coding entities (ex. PCDHG@, TRD).

In order to provide the best sensitivity for lower-expressing transcripts, we elected to remove the top 10 most highly expressed genes in TCGA across tumor types from the human WTA (*ACTB*, *ACTG1*, *EEF1A1*, *EEF2*, *FTL*, *GAPDH*, *PSAP*, *RPL3*, *TPT1*, and *UBC*). A similar assessment was performed for mouse genes according to (Söllner et al. 2017) but as most of the genes identified were organ-specific, we opted to instead remove genes based on empirical data using our assay. Those genes were *Gm20594* and *Eef1a1*. *Eef1a1* is the mouse homolog of human *EEF1A1* we prospectively removed for the same rationale, and *Gm20594* is the human ortholog of *MTRNR2L7*, which has homology to mitochondrial rRNA and thus could yield very high counts. In both human and mouse WTA, mitochondrially-encoded transcripts were removed as they are also very highly expressed.

The probe design process begins with an exhaustive evaluation of all possible contiguous 35-50 nucleotide sequence windows for each mRNA target. This large pool of possible probe

candidates are first filtered for intrinsic characteristics including melting temperature, GC content, secondary structure, and runs of poly-nucleotides. Probes satisfying these parameters are further screened for homology to the full transcriptome of the parent organism utilizing the Basic Local Alignment Search Tool (BLAST) from the National Center for Biotechnology Information (NCBI). Preference is given to probes covering known protein coding transcripts, lying within coding regions, and maximizing the coverage of the isoform repertoire. Final panel candidates are further screened for intermolecular interactions with other probes in the candidate pool including potential probe-probe hybridization as well as minimizing common sequences between probes.

For both human and mouse WTA, negative control probes were designed against synthetic sequences from the External RNA Controls Consortium (ERCC) set (Baker et al. 2005). Negative control probes were designed to have similar GC and T_m properties as target probes and are subject to the same intermolecular interaction screening. The final probe pool consists of 18,815 probes for human WTA and 20,175 probes for mouse WTA, including 139 negative control probes for human and 210 negative control probes for mouse. These probes target 19,505 and 21,596 annotated genes for human and mouse, of which 19,128 and 21,040 are protein-coding respectively. Due to high homology in some gene families, 636 human probes and 656 mouse probes target more than one gene. Targeting of a transcript is judged based on 95% sequence identity to the probe target, which is a conservative threshold at which we see no alteration in affinity between probe and target.

Probes contain an indexing sequence separated from the RNA-targeting region by a UV-photocleavable linker (Fig. S1). The indexing sequence contains a 12-nucleotide barcode identifying the RNA-targeting sequence, a 14-nucleotide random UMI, and primer binding sites for the amplification of tags and addition of P5 and P7 adaptors for Illumina NGS. The RNA ID barcodes were designed to have a minimum Hamming distance of ≥ 2 between barcodes.

For the RNA FISH comparison experiments and the CRC and NSCLC experiments, an early version of the human WTA probe pool was used that differed slightly from the final

commercially available version used for all other experiments. For these experiments, probes were filtered to only include those in the commercially available pool before any analyses were performed.

Sample preparation for DSP

Sample preparation was performed as described in the Nanostring GeoMx RNA-NGS slide preparation manuals. Samples were processed on a Leica Bond RX or RXm automated stainer (Leica Biosystems) or manually. For FFPE samples, freshly cut 5 µm sections were mounted on positively charged slides, baked, deparaffinized, washed in ethanol, and washed in PBS or Leica Bond Wash Solution. Targets were retrieved in Tris-EDTA pH 9.0 in a pressure cooker (manual protocol) or Leica BOND Epitope Retrieval Solution (automated protocol) for 10 min at 85°C (cell pellets), 10 min at 100°C (tonsil), or 20 min at 100°C (other tissues), and washed in PBS or Bond Wash Solution. Samples were digested with 0.1 mg/mL proteinase K for 5 min (cell pellets) or 1 µg/mL for 15 min (tissues) at 37°C and washed with PBS. For fresh frozen human tonsil samples, 5 µm sections were mounted on positively charged slides and fixed overnight in 10% NBF. Antigen retrieval, digestion, and washes were performed as described for FFPE except that the proteinase K digestion was at room temperature. Fixed frozen mouse cell pellets (Acepix Biosciences) were fixed in 4% PFA overnight at 4°C, embedded in OCT, and snap frozen. Fixed frozen mouse embryos (Acepix Biosciences) were fixed in 10% NBF overnight at room temperature, embedded in OCT, and snap frozen. For both cell pellets and embryos, 10 µm OCT embedded sections were washed in PBS, washed in ethanol, and antigen retrieval was performed for 15 min at 85°C (embryo) or 10 min at 85°C (cell pellets). Digestion and washes were performed as for FFPE.

All samples were incubated overnight at 37°C with human or mouse WTA following the Nanostring GeoMx RNA-NGS slide preparation manual. During incubation, slides were covered

with HybriSlip Hybridization Covers (Grace BioLabs). After incubation, coverslips were removed by soaking in 2x SSC + 0.1% Tween-20. Two 25 min stringent washes were performed in 50% formamide in 2x SSC at 37°C to remove unbound probe, and samples were washed in 2x SSC. For antibody morphology marker staining, samples were incubated in blocking buffer for 30 min at room temperature in a humidity chamber, and then incubated with 100 µm SYTO13 and the relevant fluorescently conjugated antibodies (Table S2) for 1-2 hours. Samples were washed in 2x SSC and loaded on the GeoMx DSP instrument.

Fluorescent in situ hybridization with RNAscope

ISH was performed using the RNAscope LS Multiplex Fluorescent Reagent kit (ACD) using a Leica Bond RX or RXm automated stainer according to the manufacturer's instructions. Antigen retrieval was performed for 15 min at 88°C, and digestions were performed with ACD protease for 15 min at 40°C. A list of probes used is in Table S2. Probes were visualized with TSA plus Cy3, Cy5, or Opal620.

RNAscope spot counting was performed as previously described (Merritt et al. 2020). Briefly, slides were imaged using the Nikon Eclipse TE2000-E microscope at 40x magnification. Images were captured with Nikon Elements commercial software. For imaging, z stacks at 0.5 µm steps were taken from the top to bottom focal planes of each cell pellet. Exposure time was set manually to have maximal signal for the lowest expressing cell line while remaining non-saturated for the highest expressing cell line. Maximum z-projection images were created with Nikon Elements software across all channels. QuPath software (<https://qupath.github.io/>) was used to quantify the number of RNAscope spots and cells imaged per field of view using the method and scripts described in (Merritt et al. 2020).

For the comparison of total RNAscope fluorescence intensity with WTA counts, the mean pixel intensity of each AOI for each relevant channel in the DSP 20x scan image was extracted and multiplied by total AOI area to get total fluorescence intensity.

DSP experiments

DSP experiments were performed according to the Nanostring GeoMx-NGS DSP Instrument manual and as previously described (Merritt et al. 2020). Briefly, slides were imaged in four fluorescence channels (FITC/525 nm, Cy3/568 nm, Texas Red/615 nm, Cy5/666 nm) to visualize morphology markers, and regions of interest were selected for collection. For the CRC/NSCLC and the kidney experiment, regions of interest were segmented based on the expression of morphology markers using the DSP auto-segmentation tool with manually tuned settings. AOIs were illuminated and released tags were collected into 96-well plates as previously described.

Next-generation sequencing and sequencing data analysis

Library preparation for NGS was performed according to the Nanostring GeoMx-NGS Readout Library Prep manual. Briefly, the DSP aspirate was dried and resuspended in 10 μ L DEPC-treated water, and 4 μ L were used in a PCR reaction. Nanostring SeqCode primers were used to amplify the tags and add Illumina adaptor sequences and sample demultiplexing barcodes. PCR products were pooled either in equal volumes or in proportion relative to AOI size, depending on the experiment, and purified with 2 rounds of AMPure XP beads (Beckman Coulter). Libraries were sequenced on an Illumina NextSeq 550, NextSeq 2000, or NovaSeq 6000 according to the manufacturer's instructions, with at least 27x27 paired end reads.

FASTQ files were processed using the Nanostring GeoMx NGS Pipeline v2.0 or v2.2. Briefly, reads were trimmed to remove low quality bases and adapter sequences. Paired end reads were aligned and stitched, and the barcode and UMI sequences were extracted. Barcodes were matched to known probe barcodes with maximum 1 mismatch allowed. Reads matching the same barcode were deduplicated by UMI and deduplicated counts were tabulated for each AOI and each probe.

RNAseq experiments

For the comparison to cell line RNAseq, in-house RNAseq data was generated for all of the mouse cell lines used in the comparison and 5 of 11 human cell lines (Daudi, H596, HEL, HUT78, and HS578T). Purified total RNA for each cell line was purchased from Acepix Biosciences. RNAseq libraries were prepared using the TruSeq Stranded mRNA Library Prep kit (Illumina) following the manufacturer's instructions and using 100-125 ng of RNA per cell line as input. Libraries were sequenced on an Illumina NextSeq 550 with 75x75 paired end reads.

Sequencing reads were mapped to the human RefSeq transcriptome GRCh38.p13 or the mouse reference transcriptome GRCm38.p6 using Salmon v1.3.0 with default parameters (Patro et al. 2017). Transcript-level counts were collapsed to gene-level counts using tximport v3.13 (Soneson et al. 2015).

Comparison of our in-house human cell line RNAseq data to publicly available RNAseq data from the Cancer Cell Line Encyclopedia Project (CCLE) (Ghandi et al. 2019) showed that our data was highly correlated with the CCLE data, and that WTA correlations and sensitivity were very similar using our data and the CCLE data. As there was CCLE RNAseq data available for all of the human cell lines profiled by WTA, the CCLE data was used for all of the comparisons to human WTA shown in Figure 1 and Figure S2.

Data analysis and visualization

Count data was processed and normalized using either the Nanostring DSPDA software v2.2 or v2.3, the GeoMxTools R package v1.0 (<https://bioconductor.org/packages/release/bioc/html/GeomxTools.html>), or similar in house data processing scripts. AOs with fewer than 5000 raw reads or a sequencing saturation <45% (mouse embryo experiment) or <50% (all other experiments) were filtered out of the analysis. For the negative probes, we performed outlier testing and removed outlier probes from the analysis before collapsing counts. All other targets have just one probe per target and therefore were not filtered

for outliers or collapsed. A negative probe was called an outlier if it met one of two criteria. First, if the average count of a probe across all segments was <10% of the average count of all negative probes the probe was removed from all segments. Second, if the probe was called an outlier by the Grubb's test with $\alpha = 0.01$, it was removed from that segment. If the probe was an outlier by the Grubb's test in $\geq 20\%$ of segments, it was removed from all segments. The geometric mean of the remaining probes was calculated to collapse the negative probes to a single count value.

The limit of detection (LOD) above which a gene was called "detected" was defined as 2 standard deviations above the geometric mean of negative probes. For the analyses of the kidney and mouse embryo data, genes were filtered to only those above LOD in >1% of AOIs and counts were normalized by Q3 normalization after removal of genes consistently below LOD. For the CRC/NSCLC differential expression, ssGSEA, and cell-type deconvolution analyses, genes were filtered to only those above LOD in >15% of AOIs and counts were normalized by Q3 normalization after removal of genes. For all other datasets and analyses, genes were not filtered and raw counts were used.

For the CRC/NSCLC sequencing subsampling analysis, raw FASTQ files were subsampled to the desired read depths using seqtk (<https://github.com/lh3/seqtk>). Five replicates of the subsampling were performed at each read depth level and all subsamples were run through the NGS data processing pipeline independently. For analyses where sequencing read depth was compared, AOIs were not filtered for sequencing saturation. For analyses where only one read depth is presented, the 150 reads/ μm^2 level was used and AOIs with <50% sequencing saturation were removed from the analysis.

All statistical analyses and data visualizations were performed in R or using the DSPDA software v2.3. Differential expression was performed using a linear mixed effect model with slide and DSP instrument as random effect variables, and p-values were corrected for multiple hypothesis testing. ssGSEA was performed using the GSVA R package (Hänzelmann et al.

2013). Cell-type deconvolution was performed using the SpatialDecon R package (Danaher et al.).

Data Access

All raw and processed sequencing data generated in this study will be submitted to the NCBI Gene Expression Omnibus (GEO; <https://www.ncbi.nlm.nih.gov/geo/>), accession number pending.

Competing Interest Statement

All authors are current or former employees and shareholders of NanoString Technologies Inc.

Acknowledgments

We thank Michelle Kriner and Hiromi Sato from NanoString Technologies Inc. for reviewing and editing the manuscript.

References

- Aigha II, Abdelalim EM. 2020. NKX6.1 transcription factor: a crucial regulator of pancreatic β cell development, identity, and proliferation. *Stem Cell Research and Therapy* **11**.
- Baker SC, Bauer SR, Beyer RP, Brenton JD, Bromley B, Burrill J, Causton H, Conley MP, Elespuru R, Fero M, et al. 2005. The external RNA controls consortium: A progress report. *Nature Methods* **2**: 731–734.
- Bouchard M, Souabni A, Mandler M, Neubüser A, Busslinger M. 2002. Nephric lineage specification by Pax2 and Pax8. *Genes and Development* **16**: 2958–2970.
- Brady L, Kriner M, Coleman I, Morrissey C, Roudier M, True LD, Gulati R, Plymate SR, Zhou Z, Birditt B, et al. 2021. Inter- and intra-tumor heterogeneity of metastatic prostate cancer determined by digital spatial gene expression profiling. *Nature Communications* **12**.
- Breschi A, Gingeras TR, Guigó R. 2017. Comparative transcriptomics in human and mouse. *Nature Reviews Genetics* **18**: 425–440.
- Butler D, Mozsary C, Meydan C, Fook J, Rosiene J, Shaiber A, Danko D, Afshinnkoo E, MacKay M, Sedlazeck FJ, et al. 2021. Shotgun transcriptome, spatial omics, and

isothermal profiling of SARS-CoV-2 infection reveals unique host responses, viral diversification, and drug interactions. *Nature Communications* **12**.

Chen KH, Boettiger AN, Moffitt JR, Wang S, Zhuang X. 2015. Spatially resolved, highly multiplexed RNA profiling in single cells. *Science* **348**.

Danaher P, Kim Y, Nelson B, Griswold M, Yang Z, Piazza E, Beechem JM. Advances in mixed cell deconvolution enable quantification of cell types in spatially-resolved gene expression data. <https://doi.org/10.1101/2020.08.04.235168>.

Delorey TM, Ziegler CGK, Heimberg G, Normand R, Yang Y, Segerstolpe Å, Abbondanza D, Fleming SJ, Subramanian A, Montoro DT, et al. 2021. COVID-19 tissue atlases reveal SARS-CoV-2 pathology and cellular targets. *Nature* **595**: 107–113.

Desai N, Neyaz A, Szabolcs A, Shih AR, Chen JH, Thapar V, Nieman LT, Solovyov A, Mehta A, Lieb DJ, et al. 2020. Temporal and spatial heterogeneity of host response to SARS-CoV-2 pulmonary infection. *Nature Communications* **11**.

Gao N, White P, Kaestner KH. 2009. Establishment of Intestinal Identity and Epithelial-Mesenchymal Signaling by Cdx2. *Developmental Cell* **16**: 588–599.

Ghandi M, Huang FW, Jané-Valbuena J, Kryukov G v., Lo CC, McDonald ER, Barretina J, Gelfand ET, Bielski CM, Li H, et al. 2019. Next-generation characterization of the Cancer Cell Line Encyclopedia. *Nature* **569**: 503–508.

Hänzelmann S, Castelo R, Guinney J. 2013. GSEA: *gene set variation analysis for microarray and RNA-Seq data*. <http://www.biomedcentral.com/1471-2105/14/7><http://www.bioconductor.org/Background>.

Hwang WL, Jagadeesh KA, Guo JA, Hoffman HI, Yadollahpour P, Mohan R, Drokhlyansky E, van Wittenberghe N, Ashenberg O, Farhi S, et al. Single-nucleus and spatial transcriptomics of archival pancreatic cancer reveals multi-compartment reprogramming after neoadjuvant treatment. <https://doi.org/10.1101/2020.08.25.267336>.

Jerby-Arnon L, Neftel C, Shore ME, Weisman HR, Mathewson ND, McBride MJ, Haas B, Izar B, Volorio A, Boulay G, et al. 2021. Opposing immune and genetic mechanisms shape oncogenic programs in synovial sarcoma. *Nature Medicine* **27**: 289–300.

Ju W, Greene CS, Eichinger F, Nair V, Hodgkin JB, Bitzer M, Lee YS, Zhu Q, Kehata M, Li M, et al. 2013. Defining cell-type specificity at the transcriptional level in human disease. *Genome Research* **23**: 1862–1873.

Kim BM, Buchner G, Miletich I, Sharpe PT, Shivdasani RA. 2005. The stomach mesenchymal transcription factor barx1 specifies gastric epithelial identity through inhibition of transient Wnt signaling. *Developmental Cell* **8**: 611–622.

Kumar N, Tsai YH, Chen L, Zhou A, Banerjee KK, Saxena M, Huang S, Toke NH, Xing J, Shivdasani RA, et al. 2019. The lineage-specific transcription factor CDX2 navigates dynamic chromatin to control distinct stages of intestine development. *Development (Cambridge)* **146**.

- Lee JH, Daugharthy ER, Scheiman J, Kalhor R, Ferrante TC, Terry R, Turczyk BM, Yang JL, Lee HS, Aach J, et al. 2015. Fluorescent in situ sequencing (FISSEQ) of RNA for gene expression profiling in intact cells and tissues. *Nature Protocols* **10**: 442–458.
- Martin CE, Jones N. 2018. Nephlin signaling in the podocyte: An updated view of signal regulation at the slit diaphragm and beyond. *Frontiers in Endocrinology* **9**.
- Merritt CR, Ong GT, Church SE, Barker K, Danaher P, Geiss G, Hoang M, Jung J, Liang Y, McKay-Fleisch J, et al. 2020. Multiplex digital spatial profiling of proteins and RNA in fixed tissue. *Nature Biotechnology* **38**: 586–599.
- Minoo P, Su G, Drum H, Bringas P, Kimura S. 1999. *Defects in Tracheoesophageal and Lung Morphogenesis in Nkx2.1(-/-) Mouse Embryos*. <http://www.idealibrary.com>.
- Nielsen S, Kwon T-H, Christensen BM, Promeneur D, Frøkiaer J, Marples D. 1999. *Physiology and Pathophysiology of Renal Aquaporins a*.
- Patro R, Duggal G, Love MI, Irizarry RA, Kingsford C. 2017. Salmon provides fast and bias-aware quantification of transcript expression. *Nature Methods* **14**: 417–419.
- Pelka K, Hofree M, Chen JH, Sarkizova S, Pirl JD, Jorgji V, Bejnood A, Dionne D, Ge WH, Xu KH, et al. 2021. Spatially organized multicellular immune hubs in human colorectal cancer. *Cell* **184**: 4734–4752.e20. <https://linkinghub.elsevier.com/retrieve/pii/S0092867421009454>.
- Raghoebir L, Bakker ERM, Mills JC, Swagemakers S, Kempen MB van, Munck AB de, Driegen S, Meijer D, Grosveld F, Tibboel D, et al. 2012. SOX2 redirects the developmental fate of the intestinal epithelium toward a premature gastric phenotype. *Journal of Molecular Cell Biology* **4**: 377–385.
- Rao A, Barkley D, França GS, Yanai I. 2021. Exploring tissue architecture using spatial transcriptomics. *Nature* **596**: 211–220.
- Reidy K, Kang HM, Hostetter T, Susztak K. 2014. Molecular mechanisms of Diabetic kidney disease. *Journal of Clinical Investigation* **124**: 2333–2340.
- Reidy K, Tufro A. 2011. Semaphorins in kidney development and disease: Modulators of ureteric bud branching, vascular morphogenesis, and podocyte-endothelial crosstalk. In *Pediatric Nephrology*, Vol. 26 of, pp. 1407–1412.
- Rendeiro AF, Ravichandran H, Bram Y, Chandar V, Kim J, Meydan C, Park J, Fook J, Hether T, Warren S, et al. 2021. The spatial landscape of lung pathology during COVID-19 progression. *Nature* **593**: 564–569.
- Söllner JF, Leparc G, Hildebrandt T, Klein H, Thomas L, Stupka E, Simon E. 2017. An RNA-Seq atlas of gene expression in mouse and rat normal tissues. *Scientific Data* **4**.
- Soneson C, Love MI, Robinson MD. 2015. Differential analyses for RNA-seq: transcript-level estimates improve gene-level inferences. *F1000Research* **4**: 1521.
- Ståhl PL, Salmén F, Vickovic S, Lundmark A, Navarro JF, Magnusson J, Giacomello S, Asp M, Westholm JO, Huss M, et al. 2016. Visualization and analysis of gene expression in tissue sections by spatial transcriptomics. *Science* **353**: 78–82.

- Stickels RR, Murray E, Kumar P, Li J, Marshall JL, di Bella DJ, Arlotta P, Macosko EZ, Chen F. 2021. Highly sensitive spatial transcriptomics at near-cellular resolution with Slide-seqV2. *Nature Biotechnology* **39**: 313–319.
- Thomas MC, Brownlee M, Susztak K, Sharma K, Jandeleit-Dahm KAM, Zoungas S, Rossing P, Groop PH, Cooper ME. 2015. Diabetic kidney disease. *Nature Reviews Disease Primers* **1**.
- Vickovic S, Eraslan G, Salmén F, Klughammer J, Stenbeck L, Schapiro D, Åijö T, Bonneau R, Bergenstråhle L, Navarro JF, et al. 2019. High-definition spatial transcriptomics for in situ tissue profiling. *Nature Methods* **16**: 987–990.
- Wang F, Flanagan J, Su N, Wang LC, Bui S, Nielson A, Wu X, Vo HT, Ma XJ, Luo Y. 2012. RNAscope: A novel in situ RNA analysis platform for formalin-fixed, paraffin-embedded tissues. *Journal of Molecular Diagnostics* **14**: 22–29.
- Weinstein JN, Collisson EA, Mills GB, Shaw KRM, Ozenberger BA, Ellrott K, Sander C, Stuart JM, Chang K, Creighton CJ, et al. 2013. The cancer genome atlas pan-cancer analysis project. *Nature Genetics* **45**: 1113–1120.
- Willet SG, Mills JC. 2016. Stomach Organ and Cell Lineage Differentiation: From Embryogenesis to Adult Homeostasis. *CMGH* **2**: 546–559.
- Xia C, Fan J, Emanuel G, Hao J, Zhuang X. 2019. Spatial transcriptome profiling by MERFISH reveals subcellular RNA compartmentalization and cell cycle-dependent gene expression. *Proceedings of the National Academy of Sciences of the United States of America* **116**: 19490–19499.
- Young MD, Mitchell TJ, Vieira Braga FA, Tran MGB, Stewart BJ, Ferdinand JR, Collord G, Botting RA, Popescu DM, Loudon KW, et al. 2018. Single-cell transcriptomes from human kidneys reveal the cellular identity of renal tumors. *Science* **361**: 594–599.