

Dormant spores sense amino acids through the B subunits of their germination receptors

Lior Artzi¹, Assaf Alon², Kelly P. Brock³, Anna G. Green³, Amy Tam³, Fernando H. Ramírez-Guadiana¹, Debora Marks³, Andrew Kruse², David Z. Rudner^{1*}

¹ Department of Microbiology
Harvard Medical School
77 Avenue Louis Pasteur
Boston MA 02115

² Department of Biological Chemistry and Molecular Pharmacology
Harvard Medical School
250 Longwood Avenue
Boston MA 02115

³ Department of Systems Biology
Harvard Medical School
200 Longwood Avenue
Boston MA 02115

* To whom correspondence should be addressed:
david_rudner@hms.harvard.edu

Keywords: Sporulation, Germination, Nutrient sensing, APC superfamily, Germinant Receptor

Running Title: GerAB is an amino acid sensor

Abstract (150 words)

Bacteria from the orders *Bacillales* and *Clostridiales* differentiate into stress-resistant spores that can remain dormant for years, yet rapidly germinate upon nutrient sensing. How spores monitor nutrients is poorly understood but in most cases requires putative membrane receptors. The prototypical receptor from *Bacillus subtilis* consists of three proteins (GerAA, GerAB, GerAC) required for germination in response to L-alanine. GerAB belongs to the Amino Acid-Polyamine-Organocation superfamily of transporters. Using evolutionary co-variation analysis, we provide evidence that GerAB adopts a structure similar to an L-alanine transporter from this superfamily. We show that mutations in *gerAB* predicted to disrupt the ligand-binding pocket impair germination, while mutations predicted to function in L-alanine recognition enable spores to respond to L-leucine or L-serine. Finally, substitutions of bulkier residues at these positions cause constitutive germination. These data suggest that GerAB is the L-alanine sensor and that B subunits in this broadly conserved family function in nutrient detection.

Introduction

Most spore-forming bacteria from the orders *Bacillales* and *Clostridiales* contain several operons that encode putative 3-subunit receptors of the Ger family¹. These receptors have been implicated in the response to a wide array of nutrients including amino acids, sugars, nucleosides, and inorganic cations. Germination does not require the active transport of these molecules into the spore and it is therefore thought that the Ger receptors function as nutrient sensors². Over the last four decades Ger-type receptors have been studied in *Bacillus subtilis*¹, *Bacillus megaterium*^{3,4}, *Bacillus cereus*^{5,6}, *Bacillus anthracis*^{7,8}, *Bacillus licheniformis*^{9,10}, *Clostridium botulinum*, *Clostridium sporogenes*¹¹, and *Clostridium perfringens*^{12,13}. In some cases, a receptor is required for spores to respond to a single germinant. In others, two Ger paralogs must both be present to respond to a mixture of nutrients¹⁴. In yet a third example, a single Ger receptor is required for spores to respond to two or more distinct ligands that act synergistically¹⁵. Although the requirement for Ger family members in spore germination has been well documented, it remains unclear whether and how these complexes monitor nutrient signals. Work in *B. subtilis* and *B. megaterium* has implicated the B subunit of these complexes in nutrient sensing^{4,16,17}, while mutagenesis and recent structural analysis have suggested the A subunit plays this role^{18,19}. However, no study has definitively established the role of these broadly conserved complexes in germinant sensing. Here, we address these questions using the prototypical nutrient receptor GerA from *B. subtilis*.

Results

Structural modeling of GerAB

The B subunit of the GerA receptor (GerAB) has low sequence identity (~21%) to the *Geobacillus kaustophilus* L-alanine transporter GkApcT, a member of the Amino Acid-Polyamine-Organocation (APC) superfamily²⁰. However, the remote homology detection program HHPred²¹ identified GkApcT as a top hit using GerAB as a query to search for homologs of known structure (Probability 99.95%, E-value $6.2e^{-23}$). To investigate whether GerAB adopts a similar fold to GkApcT, we threaded GerAB onto the recently determined crystal structure of GkApcT (PDB ID: [5OQT](#))²⁰ and compared the residues with a minimum-atom distance of 5 Å in this model to Evolutionary Coupled (EC) residues in GerAB identified by evolutionary co-variation analysis^{22,23} (**Fig. 1A**). Co-variation analysis relies on the fact that amino acids involved in intramolecular interactions tend to co-evolve with one another to maintain their interactions. Thus, EC residue pairs generally reside in close proximity. We analyzed >20,000 GerAB homologs and identified 330 long-range EC pairs with probability scores >0.9. We then compared these EC pairs with all residue pairs in the threaded GerAB model that are ≤ 5 Å apart. As can be seen in the interaction matrix in Figure 1A, among the EC pairs (black circles), 51% were within 5 Å of each other in the threaded model (light blue circles) and 85% of the EC pairs were within 8 Å of each other (**Supplementary Fig. 1A**). These data strongly suggest that the overall fold is conserved between these two APC superfamily members and that the homology model is built on a correct alignment without major amino acid register errors.

GkApcT has 12 transmembrane (TM) segments and, like all APC superfamily members, two-fold inverted pseudo-symmetry^{24,25}. The first and sixth TM helices in GkApcT contain characteristic discontinuities that generate the ligand-binding pocket (**Supplementary Fig. 1B**). Helices 3, 6, and 8 contribute amino acids that line this pocket and provide L-alanine specificity. Methionine 321 in helix 8 forms the base of the pocket and substitution to serine enabled transport of L-arginine in addition to L-alanine²⁰.

Mutations in the putative ligand-binding pocket block germination

Motivated by the structure-function analysis of GkApcT²⁰, we investigated the analogous residues in the predicted GerAB structure. For these studies we used a *B. subtilis* strain in which GerA was the only functional germinant receptor. Furthermore, to avoid polar effects, the three genes in the *gerA* operon were expressed separately at three ectopic chromosomal loci. Spores derived from this strain germinated in response to L-alanine with kinetics similar to wild-type (**Supplementary Fig. 2 and Supplementary Table 1**).

In the threaded GerAB structure, the discontinuities in TM helix 1 and 6 are generated by glycines (G25 and G200) (**Fig. 1B**). As a first test of the structural model, we individually substituted these residues for alanine and analyzed spore viability and germination. As can be seen in Figure 2, both mutants had reduced spore viability and failed to germinate in the presence of L-alanine as assayed by a reduction in optical density as germinating spores transition from phase-bright to phase-dark (**Fig. 2A and B**). To investigate whether the mutant proteins were stably produced, we took advantage of the fact that the A and C subunits of the GerA receptor depend on GerAB for stability^{16,19}. Immunoblot analysis of spores harboring GerAB(G25A) and a functional GerAC-His6 fusion indicated that the levels of both GerAA and GerAC were similar to those in spores with wild-type GerAB (**Fig. 2C**). By contrast, the levels of both subunits in spores harboring GerAB(G200A) were low and similar to the levels in $\Delta gerAB$ spores. Thus, GerAB(G25A) is produced and assembles into a stable complex with GerAA and GerAC, while GerAB(G200A) is either unstable or unable to form a complex with its partner proteins. Altogether these results are consistent with the idea that GerAB has an L-alanine-binding pocket similar to GkApcT's.

Mutations that alter germinant specificity

To test the hypothesis that GerAB monitors L-alanine, we sought to change germinant specificity by mutating the residues that line the putative substrate-binding site. We began by targeting tyrosine 291 in TM helix 8 that is predicted to lie at the base of the pocket, analogous to M321 in GkApcT²⁰. However, spores harboring GerAB(Y291S) had reduced levels of GerAA (**Supplementary Fig. 3C**), indicating that the mutant protein was unstable or unable to interact with its cognate subunits. Consistent with this finding, the mutant spores failed to germinate in response to L-alanine and germination and outgrowth on LB agar plates was similar to spores lacking GerAB (**Supplementary Fig. 3A and B**). Accordingly, we turned our attention to residues in TM helices 3, 6, and 8 that are predicted to line the ligand-binding pocket and provide specificity for L-alanine. We began by testing amino acid substitutions at V101 in helix 3 (**Fig. 1B**). Spores harboring GerAB(V101C) or (V101A) germinated with kinetics similar to wild-type over a range of L-alanine concentrations (**Fig. 3A and Supplementary Fig. 4**), indicating that these substitutions did not disrupt the putative ligand-binding pocket. We next investigated whether the mutant spores could respond to other nutrients. Spores harboring the wild-type *gerA* locus respond to micromolar concentrations of L-alanine, low millimolar concentrations of L-valine and inefficiently to a few other amino acids when present at concentrations >25mM^{26,27}. Here, we tested a panel of 9 amino acids. Similar to wild-type, both mutants failed to respond to L-threonine, L-serine, L-asparagine, or L-arginine and weakly responded to 3 mM L-valine and 5 mM L-cysteine (**Supplementary Fig. 5**). However, both GerAB

variants specifically and robustly responded to L-leucine (**Fig. 3B and Supplementary Fig. 5**). The germination assay in Figure 3B shows the response of wild-type and mutant spores to 5 mM L-leucine. However, spores harboring GerAB(V101C) displayed partial germination in response in 0.3 mM L-leucine and full germination with 1 mM while spores with GerAB(V101A) partially responded to 1 mM L-leucine (**Supplementary Fig. 6A**). By contrast, spores with wild-type GerAB failed to germinate even in the presence of 50 mM L-leucine (**Supplementary Fig. 6A**). Importantly, immunoblot analysis revealed that GerAA and GerAC levels in the V101 mutant spores were lower than wild-type (**Supplementary Fig. 7**) indicating that the expanded germinant specificity was not a consequence of over-expression. Finally, we found that D-alanine, a competitive inhibitor of L-alanine²⁸ (**Supplementary Fig. 8**), also inhibited germination by L-leucine (**Fig. 3D**), consistent with the idea that L-leucine binds in the same pocket as L-alanine in the GerAB mutants.

Prompted by the identification of GerAB mutants with expanded germination specificity, we generated a series of mutations at L199 in TM helix 6 and T287 in TM helix 8 (**Fig. 1B**). Among the mutants tested, we identified one (L199S) that enabled spores to respond to L-serine (**Fig. 3E**). Spores harboring this mutant had a nearly full response to 3 mM L-serine and weakly responded to 1 mM (**Supplementary Fig. 6C**). By comparison, spores with wild-type GerAB barely germinated in the presence of 30 mM L-serine (**Supplementary Fig. 6C**). Importantly, the GerAB(L199S) spores responded to a panel of amino acids in a manner similar to wild-type (**Supplementary Fig. 5**), indicating that the change in response to L-serine was specific. Finally, we identified two mutants, GerAB(L199I) and GerAB(T287V), that like V101C and V101A were more sensitive to L-isoleucine compared to wild-type GerAB (**Supplementary Fig. 5D and E, Supplementary Fig. 6B**). In all cases, the levels of GerAA and GerAC in spores derived from these mutants were similar to wild-type (**Supplementary Fig. 7**). Collectively, these data support the idea that GerAB adopts a fold similar to GkApcT and argue that GerAB detects L-alanine in its ligand-binding pocket.

Bulkier residues mimic L-alanine binding

As a final test of our model, we investigated whether substituting residues that line the ligand-binding pocket with bulkier amino acids could mimic L-alanine binding and trigger premature germination in the absence of germinant signals. We generated and tested a series of amino acid substitutions at V101, L199, and T287 (**Supplementary Table 2**). Two such mutants, V101F and T287L, had the anticipated phenotype. Sporulating cultures of these mutants had a high percentage of phase-dark spores compared to wild-type GerAB and the $\Delta gerAB$ mutant (**Fig. 4A**), suggesting that the developing spores had inappropriately germinated during spore formation. Consistent with

this idea, these spore cultures had reduced colony-forming units after incubation at 80°C for 20 min (**Fig. 4B**) indicative of a loss in spore resistance properties. Importantly, these phenotypes were not due to over-expression of GerA complexes in the mutants (**Supplementary Fig. 7**). Premature germination and the production of phase-dark spores during sporulation result from Ger-dependent activation of an enzyme (SleB) that degrades the specialized peptidoglycan called the cortex that surrounds the dormant spore^{29,30}. To investigate whether the phase-dark spores in the GerAB(V101F) and GerAB(T287L) cultures resulted from SleB activation, we analyzed the point mutants in a $\Delta sleB$ background. As can be seen in Figure 4A, the absence of SleB largely suppressed the phase-dark-spore phenotype. Instead, many of the spores had a phase-grey appearance, which results from release of dipicolinic acid (DPA) from the spore core, an early step in GerA-dependent germination. Collectively, these data indicate that bulkier residues in the ligand-binding pocket can trigger germination providing additional evidence that GerAB functions as the L-alanine sensor and utilizes a similar ligand-binding pocket as GkApcT.

Discussion

Altogether our results provide strong support for the model that *B. subtilis* GerA is a nutrient receptor and that the B subunit of this complex directly senses L-alanine. These findings lead us to hypothesize that the B subunits of Ger family receptors in all endospore forming bacteria function as nutrient sensors. Many of these putative receptors are required for germination in response to distinct amino acids and our data highlight how specificity could evolve through changes in the residues in and around the ligand-binding pocket. However, sugars and nucleosides are also common germinants and these nutrients similarly require Ger family members to trigger germination^{1,14,31}. Interestingly, there are many sugar and nucleobase transporters in the APC superfamily including the solute sodium symporter (SSS) and nucleobase–cation–symport-1 (NCS1) families²⁵. Structures of the SSS family member vSGLT³², a sodium/galactose transporter from *Vibrio parahaemolyticus* and the NCS1 family member Mhp1, a benzyl-hydantoin transporter from *Microbacterium liquefaciens* have been solved^{33–35}. The cores of these transporters are structurally homologous to that of GkApcT with ligand-binding pockets that overlap or lie adjacent to the L-alanine binding-pocket described here (**Supplementary Fig. 11**). These data support the idea that B subunits in the Ger family could also sense sugars and nucleosides and raise the possibility that some germinant receptors could simultaneously bind both sugar and amino acid (or nucleoside) and thus function to integrate nutrient status in the environment. In addition, both vSGLT and Mhp1 use the inward Na⁺ gradient to drive transport by promoting a structural rearrangement that increases substrate affinity. Some Ger receptors require Na⁺ or K⁺ as a co-

germinant to respond to nutrients^{26,36} and the Na⁺-binding sites in vSGLT and Mhp1 could explain the mechanistic basis for this requirement. Future studies will be focused on testing whether B subunits sense sugars and nucleosides and whether these subunits can bind nutrients cooperatively.

A recent structural study of the N-terminal domain of a GerAA homolog, GerK₃A from *B. megaterium*, revealed that this soluble domain shares structural similarity with substrate-binding proteins from bacterial ABC transporters, albeit with a distinct order and connectivity of the structural segments¹⁸. This finding suggests that the GerAA subunit could also function in nutrient sensing. To detect exogenous germinants, this domain would need to face the external environment. Previous studies aimed at defining the topology of A subunits from Ger receptors in *B. subtilis* and *B. anthracis* were equivocal with one study placing the soluble N-terminal domain outside and another concluding it was intracellular and therefore inaccessible to nutrient signals^{37,38}. To investigate this discrepancy, we used co-variation analysis to identify evolutionary coupled residues within GerAA and between subunits in the GerA receptor^{39,40}. This analysis is consistent with a model in which the N-terminal domain of GerAA resides in the spore core (**Supplementary Fig. 12A and B**). To more rigorously assess the topology of GerAA, we performed cysteine accessibility and protease protection assays on exponentially growing cells expressing the GerA subunits (**Supplementary Fig. 12C and D**). Both assays provide strong experimental support for the model that the N-terminal domain of GerAA resides in the spore core. Although we cannot rule out the possibility that the N-terminal domains of other A subunits face the external environment, we favor a model in which the B subunits of these receptors function as the nutrient sensors with the A subunits serving as signal transducers.

Transporters by definition have to undergo a conformational change in order to function, since they cannot allow substrate to access both sides of the membrane at the same time. A receptor likewise needs to link ligand binding to a conformational change that can be detected by effector proteins. A transporter thus represents an ideal potential starting point for evolving a receptor, since it already has ligand binding and conformational change activities. The B subunits of the Ger family are not the only example of this conversion. Lysosomal amino acid levels are an important regulatory input for the mTORC1 pathway in eukaryotes, and one of the key amino acid sensors in this pathway is SLC38A9, a transporter homolog and an APC superfamily member. SLC38A9 detects lysosomal arginine⁴¹⁻⁴³, and possesses multiple activities including arginine-stimulated transport of amino acids⁴⁴ as well as acting as a guanine nucleotide exchange factor for Rag GTPases⁴⁵. These

activities have led to SLC38A9 being designated a “transceptor”, combining activities typically exclusive to receptors and transporters⁴⁶. It remains to be seen whether Ger receptor B subunits function solely as receptors, or if they also retain some transport activity.

How nutrient detection by GerAB activates germination is still unclear. We envision a scenario in which a conformational change in GerAB upon L-alanine binding modulates GerAA, which directly or indirectly triggers release of DPA from the spore core and activates the cortex lytic enzymes. GerAC is a lipoprotein with unknown function. However, the interaction between GerAC and GerAB/GerAA predicted by our co-variation analysis (**Supplementary Fig. 12B**) is reminiscent of the mammalian heteromeric amino acid transporters (HATs). These transporters are composed of two subunits: a ligand-binding transporter of the SLC7 family, part of the APC superfamily, and a type II membrane protein of the SLC3 family that contains a large extracellular domain. Recent structural studies of human L-type amino acid transporter 1 of the SLC7 family in complex with CD98hc of the SLC3 family^{47,48} indicate that the extracellular domain of the SLC3 subunit sits on top of the SLC7 transporter and is essential for transport activity. The contacts between the two subunits suggest that the extracellular domain of CD98hc modulates the path of transported substrates. By analogy, we speculate that GerAC subunits could help channel nutrient signals to GerAB through the spore’s integument layers.

It is noteworthy that *Clostridioides difficile* and other Peptostreptococcaceae family members do not encode Ger type receptors^{49,50}. Instead, these endospore formers encode two soluble pseudoproteases CspC and CspA that have been implicated in germinant sensing. CspC and CspA are thought to hold a subtilisin-like protease CspB inactive within the integument layers of the dormant spore. In response to germinants, inhibition is relieved allowing CspB to cleave and activate the spore cell wall degrading enzyme SleC. Germination of *C. difficile* spores in the colon is triggered by mammalian-specific bile acids in combination with amino acids or Ca²⁺ co-germinants. Recent studies have uncovered point mutations in *cspC* that allow the bile acid chenodeoxycholic acid to act as a spore germinant rather than an inhibitor of germination⁵¹. Mutations have also been identified in *cspA* that bypass the requirement for co-germinants⁵². These findings suggest that CspC could be the bile acid sensor and CspA a sensor of co-germinants. However, unlike the GerAB point mutants that narrowly and specifically expanded amino acid recognition, the CspC point mutants have recently been found to broadly increase sensitivity to bile acids and co-germinants⁵³ raising the possibility that CspC alone could sense and integrate multiple signals as proposed for GerAB or that CspC and possibly CspA function in transducing these

signals rather than directly sensing them. The identification of mutations in *cspC* (and *cspA*) like the ones described here will help address these alternative models. Understanding these distinct germination pathways has the potential to uncover common principles for nutrient detection and signal transduction during exit from dormancy.

The Ger receptors have been studied for decades but whether and how they sense nutrients has been unclear. Here, we provide evidence that the B subunits of these complexes adopt the structure of APC family transporters and possess a ligand-binding pocket involved in amino acid recognition. Importantly, agonists and antagonists that interact with the substrate-binding sites have been identified for other APC superfamily members⁵⁴ suggesting that the ligand binding pockets of B subunits can be similarly targeted. Structural studies of B family members will enable their discovery and will begin to address how ligand binding triggers exit from dormancy.

Methods

General methods

All strains were derived from *Bacillus subtilis* 168⁵⁵. Cells were sporulated by nutrient exhaustion in DS medium (DSM)⁵⁶ at 37° C for 48 h. Sporulation efficiency was determined by comparing heat resistant (80° C for 20 min) colony forming units (CFUs) of the mutants to wild-type. All insertion-deletion mutants were generated using the *Bacillus* knock-out collection (BKE)⁵⁷ or by isothermal assembly of PCR products and direct transformation into *Bacillus subtilis*. Site-directed mutations in *gerAB* were generated by quick change. All mutants and inserts generated by PCR were sequence-verified. Lists of strains (**Supplementary Table 3**), plasmids (**Supplementary Table 4**), and oligonucleotide primers (**Supplementary Table 5**) used in this study can be found in supplementary information. A detailed description of the construction of strains and plasmids can be found in supplementary methods.

Structural modeling

An initial alignment was generated between GerAB and GkApcT using the HHPred server²¹ (<https://toolkit.tuebingen.mpg.de/tools/hhpred>). The resulting alignment was used to construct a homology model in MODELLER⁵⁸ using the GkApcT structure as a template (PDB ID: [5OQT](#)).

Evolutionary co-variation analysis

EVcouplings software (available at <https://github.com/debbiemarkslab/EVcouplings>)^{22,23,59} version 0.0.5 (GerAA and GerAB) and 0.1.1 (GerVB) was used on multiple sequence alignments generated for GerAA, GerAB, and GerVB. Alignments were generated using the jackhmmer software⁶⁰ with 5 iterations against the uniref100 dataset downloaded January 2020 (GerAA and GerAB) or July 2020 (GerVB)⁶¹ across a range of normalized bitscores. The GerAB alignment consisted of 20,525 sequences with 95.6% coverage, at least 70% non-gap characters with fragments filtered at a threshold of 70%. The GerAA alignment consisted of 23,876 sequences with 95.9% coverage. The GerVB alignment consisted of 21,695 sequences and 96.2% coverage. Evolutionary couplings were then calculated for these alignments using pseudolikelihood maximization to infer parameters used to calculate evolutionary couplings scores. For more information about the analysis see supplementary methods. The top-ranked evolutionary couplings scores for 330 long-range (separated by at least 5 amino acids in sequence) residue pairs were then displayed in the contact maps shown in Figure 1A and Supplementary Fig. 1A.

Spore preparation and purification

Spores were generated on DSM agar plates. Briefly, cells were grown to an OD₆₀₀ of ~0.2 in liquid medium and spread on DSM agar plates and incubated at 37° C for 96 h. Spores were scraped off the plate and suspended in ddH₂O. The suspension was washed three times and then resuspended in 350 µL 20% Histodenz (Sigma-Aldrich). The suspension was layered on top of 1 mL 50% Histodenz step-gradient and centrifuged at 20,000Xg for 30 min at room temperature. Mature phase-bright spores were collected from the pellet fraction, washed four times in ddH₂O and stored in 1 mL of 1X phosphate buffered saline (PBS) at 4 °C.

Germination assay

Purified phase-bright spores, normalized to OD₆₀₀ of 1.2 in 25 mM HEPES pH 7.4, were heat-activated at 70° C for 30 min followed by 20 min incubation on ice. 100µl of the indicated amino acid solutions were dispensed into a 96-well plate. 100 µL of heat-activated spores were then added and the OD₆₀₀ was monitored every 2 min for 4 h using Infinite M Plex plate reader (Tecan). The 96-well plate was maintained at 37° C with agitation between measurements. All amino acids were dissolved in 25 mM HEPES, pH 7.4. For L-alanine:D-alanine competition, L-alanine was held at 1

mM, and D-alanine concentration was varied as indicated. For L-leucine:D-alanine competition assays, L-leucine was held at 5 mM.

Microscopy

Purified spores were normalized to OD₆₀₀ of 1.2, heat-activated as described above, and 250 μ L of the spore suspension were transferred to glass test tubes. Spores were then mixed 1:1 with 25 mM HEPES buffer pH 7.4, 2 mM L-alanine, or 10 mM L-leucine and incubated 37 °C with aeration for 100 min. The spores were then concentrated by centrifugation, washed once in ddH₂O, and placed on 2% agar pads made with ddH₂O and analyzed by phase-contrast microscopy. To assess premature germination, cells were sporulated in 3 mL DSM for 30 h at 37 °C, concentrated by centrifugation, washed once in ddH₂O, and imaged on 2% ddH₂O agar pads. Phase-contrast microscopy was performed using Nikon TE2000 inverted microscope equipped with Plan Apo 100x/1.4 Oil Ph3 DM objective lens and CoolSNAP HQ2 monochrome CCD camera (Photometrics). Image analysis was performed using MetaMorph software (Molecular Devices; version 7.7).

Immunoblot Analysis

Cells were sporulated in 25 mL DSM for 48 h at 37°C. The cultures were incubated at 80 °C for 20 min and spores and cell debris were pelleted, washed twice with 25 mL ddH₂O, and resuspended in 1 mL 1XPBS. The suspension was incubated with lysozyme (1.5 mg/ml final) at 37 °C for 1 h followed by the addition of sodium dodecylsulfate (SDS) (2% final) for 30 min. Spores were washed 5 times with ddH₂O and resuspended in 500 μ L 1XPBS, supplemented with phenylmethylsulfonyl fluoride (PMSF) (1mM final) (Sigma-Aldrich). Spores were then lysed using FastPrep (MP Biomedicals) in 2 mL tubes containing lysis matrix B (MP Biomedicals). Immediately after lysis, 500 μ L of 2X Laemmli sample buffer containing 10% β -mercaptoethanol was added. After centrifugation at 20,000Xg for 20 min, the supernatant was transferred to a fresh tube, and protein concentration was determined using a noninterfering protein assay (G-Biosciences). 12 μ g of protein was resolved by SDS-PAGE on a 17.5% acrylamide gel and transferred to an Immobilon-P membrane (Millipore). The membranes were blocked with 5% bovine serum albumin in 1XPBS with 0.5% Tween 20 (PBST) and probed with anti-GerAA⁶² (1:5,000), anti-SleB⁶³ (1:5,000), anti-SpoVAD⁶⁴ (1:10,000) and anti-His (1:4,000) (GenScript) antibodies, diluted in 3% BSA in PBST. Primary antibodies were detected with anti-rabbit (1:3,000) and anti-mouse (1:20,000) secondary antibodies coupled to horseradish peroxidase (Bio-Rad), diluted in 3% BSA-PBST, and detected with Western Lightning ECL reagent (PerkinElmer). Although SleB and SpoVAD are in the germination pathway their production and stability in dormant spores are unaffected by the presence or absence of the Ger receptors. Accordingly, they serve as reliable controls for loading. All unprocessed immunoblots are presented in the Source Data file.

Data availability

All datasets generated in this study are available at <<https://github.com/debbiemarkslab/GerA-suppData-2021>>. For EVcouplings analysis, all data for alignments were collected from publicly available datasets (Uniref100) (<https://www.uniprot.org/uniref/>) and ENA genome location tables deposited in Figshare <https://figshare.com/articles/dataset/_/16873912>, with the DOI: 10.6084/m9.figshare.16873912.

The alignment between GerAB and GkApcT was generated using the HHPred server (<https://toolkit.tuebingen.mpg.de/tools/hhpred>), and a homology model from the alignment was constructed in MODELLER (<https://salilab.org/modeller/>) using the structure of GkApcT as a template (PDB ID: 5OQT). Source data are provided with this paper.

Code availability

The EVcouplings software used in this study is available at
<<https://github.com/debbiemarkslab/EVcouplings>>

References

1. Moir, A. & Cooper, G. Spore germination. in *The Bacterial Spore* **3**, 217–236 (ASM Press, 2016).
2. Scott, I. R. & Ellar, D. J. Metabolism and the triggering of germination of *Bacillus megaterium*. Use of I-[3H]alanine and tritiated water to detect metabolism. *Biochem. J.* **174**, 635–640 (1978).
3. Christie, G. & Lowe, C. R. Role of chromosomal and plasmid-borne receptor homologues in the response of *Bacillus megaterium* QM B1551 spores to germinants. *J. Bacteriol.* **189**, 4375–4383 (2007).
4. Christie, G., Lazarevska, M. & Lowe, C. R. Functional consequences of amino acid substitutions to GerVB, a component of the *Bacillus megaterium* spore germinant receptor. *J. Bacteriol.* **190**, 2014–2022 (2008).
5. Hornstra, L. M., De Vries, Y. P., De Vos, W. M., Abee, T. & Wells-Bennik, M. H. J. *gerR*, a novel *ger* operon involved in L-alanine- and inosine-initiated germination of *Bacillus cereus* ATCC 14579. *Appl. Environ. Microbiol.* **71**, 774–781 (2005).
6. Hornstra, L. M., De Vries, Y. P., Wells-Bennik, M. H. J., De Vos, W. M. & Abee, T. Characterization of germination receptors of *Bacillus cereus* ATCC 14579. *Appl. Environ. Microbiol.* **72**, 44–53 (2006).
7. Weiner, M. A., Read, T. D. & Hanna, P. C. Identification and characterization of the *gerH* operon of *Bacillus anthracis* endospores: A differential role for purine nucleosides in germination. *J. Bacteriol.* **185**, 1462–1464 (2003).
8. Fisher, N. & Hanna, P. Characterization of *Bacillus anthracis* germinant receptors in vitro. *J. Bacteriol.* **187**, 8055–8062 (2005).
9. Løvdaal, I. S. *et al.* Role of the *gerA* operon in L-alanine germination of *Bacillus licheniformis* spores. *BMC Microbiol.* **12**, (2012).
10. Aspholm, M. *et al.* Importance of individual germination receptor subunits in the cooperative function between GerA and Ynd. *J. Bacteriol.* **201**, 1–13 (2019).
11. Brunt, J. *et al.* Functional characterisation of germinant receptors in *Clostridium botulinum* and *Clostridium sporogenes* presents novel insights into spore germination systems. *PLoS Pathog.* **10**, 21–23 (2014).
12. Paredes-Sabja, D., Torres, J. A., Setlow, P. & Sarker, M. R. *Clostridium perfringens* spore germination: Characterization of germinants and their receptors. *J. Bacteriol.* **190**, 1190–1201 (2008).
13. Paredes-Sabja, D., Setlow, P. & Sarker, M. R. Role of GerKB in germination and outgrowth of *Clostridium perfringens* spores. *Appl. Environ. Microbiol.* **75**, 3813–3817 (2009).
14. Atluri, S., Ragkousi, K., Cortezzo, D. E. & Setlow, P. Cooperativity between different nutrient receptors in germination of spores of *Bacillus subtilis* and reduction of this cooperativity by alterations in the GerB receptor. *J. Bacteriol.* **188**, 28–36 (2006).
15. Carr, K. A., Lybarger, S. R., Anderson, E. C., Janes, B. K. & Hanna, P. C. The role of *Bacillus anthracis* germinant receptors in germination and virulence. *Mol. Microbiol.* **75**, 365–375 (2010).
16. Cooper, G. R. & Moir, A. Amino acid residues in the GerAB protein important in the function and assembly of the alanine spore germination receptor of *Bacillus subtilis* 168. *J. Bacteriol.* **193**, 2261–2267 (2011).
17. Christie, G., Götzke, H. & Lowe, C. R. Identification of a receptor subunit and putative ligand-binding residues involved in the *Bacillus megaterium* QM B1551 spore germination response to glucose. *J. Bacteriol.* **192**, 4317–4326 (2010).
18. Li, Y. *et al.* Structural and functional analyses of the N-terminal domain of the A subunit of a

- Bacillus megaterium* spore germinant receptor. *Proc. Natl. Acad. Sci.* **116**, 11470–11479 (2019).
19. Mongkolthanaruk, W., Cooper, G. R., Mawer, J. S. P., Allan, R. N. & Moir, A. Effect of amino acid substitutions in the GerAA protein on the function of the alanine-responsive germinant receptor of *Bacillus subtilis* spores. *J. Bacteriol.* **193**, 2268–2275 (2011).
 20. Jungnickel, K. E. J., Parker, J. L. & Newstead, S. Structural basis for amino acid transport by the CAT family of SLC7 transporters. *Nat. Commun.* **9**, 1–8 (2018).
 21. Zimmermann, L. *et al.* A completely reimplemented MPI bioinformatics toolkit with a new HHpred server at its core. *J. Mol. Biol.* 1–7 (2017). doi:10.1016/j.jmb.2017.12.007
 22. Hopf, T. A. *et al.* Three-dimensional structures of membrane proteins from genomic sequencing. *Cell* **149**, 1607–1621 (2012).
 23. Marks, D. S. *et al.* Protein 3D Structure Computed from Evolutionary Sequence Variation. *PLoS One* **6**, e28766 (2011).
 24. Västermark, Å. & Saier, M. H. Evolutionary relationship between 5+5 and 7+7 inverted repeat folds within the amino acid-polyamine-organocation superfamily. *Proteins Struct. Funct. Bioinforma.* **82**, 336–346 (2014).
 25. Västermark, A., Wollwage, S., Houle, M. E., Rio, R. & Saier, M. H. Expansion of the APC superfamily of secondary carriers. *Proteins Struct. Funct. Bioinforma.* **82**, 2797–2811 (2014).
 26. Wax, R. & Freese, E. Initiation of the germination of *Bacillus subtilis* spores by a combination of compounds in place of L-alanine. *J. Bacteriol.* **95**, 433–438 (1968).
 27. Nitta, Y., Yasuda, Y., Tochikubo, K. & Hachisuka, Y. L amino acid dehydrogenases in *Bacillus subtilis* spores. *J. Bacteriol.* **117**, 588–592 (1974).
 28. Woese, C. R., Morowitz, H. J. & Hutchison, C. A. Analysis of action of L-alanine analogues in spore germination. *J. Bacteriol.* **76**, 578–88 (1958).
 29. Popham, D. L. & Bernhards, C. B. Spore peptidoglycan. *Microbiol. Spectr.* **3**, (2016).
 30. Paidhungat, M., Ragkousi, K. & Setlow, P. Genetic requirements for induction of germination of spores of *Bacillus subtilis* by Ca²⁺-Dipicolinate. *J. Bacteriol.* **183**, 4886–4893 (2001).
 31. Barlass, P. J., Houston, C. W., Clements, M. O. & Moir, A. Germination of *Bacillus cereus* spores in response to L-alanine and to inosine: The roles of *gerL* and *gerQ* operons. *Microbiology* **148**, 2089–2095 (2002).
 32. Faham, S. *et al.* The crystal structure of a sodium galactose transporter reveals mechanistic insights into Na⁺/sugar symport. *Science* **321**, 810–4 (2008).
 33. Shimamura, T. *et al.* Molecular basis of alternating access membrane transport by the sodium-hydantoin transporter Mhp1. *Science* **328**, 470–3 (2010).
 34. Weyand, S. *et al.* Structure and molecular mechanism of a nucleobase-cation-symport-1 family transporter. *Science* **322**, 709–13 (2008).
 35. Simmons, K. J. *et al.* Molecular mechanism of ligand recognition by membrane transport protein, Mhp1. *EMBO J.* **33**, 1831–1844 (2014).
 36. Paredes-Sabja, D., Udombijitkul, P. & Sarker, M. R. Inorganic phosphate and sodium ions are cogermnants for spores of *Clostridium perfringens* type A food poisoning-related isolates. *Appl. Environ. Microbiol.* **75**, 6299–6305 (2009).
 37. Wilson, M. J., Carlson, P. E., Janes, B. K. & Hanna, P. C. Membrane topology of the *Bacillus anthracis* GerH germinant receptor proteins. *J. Bacteriol.* **194**, 1369–1377 (2012).
 38. Korza, G. & Setlow, P. Topology and accessibility of germination proteins in the *Bacillus subtilis* spore inner membrane. *J. Bacteriol.* **195**, 1484–1491 (2013).
 39. Hopf, T. A. *et al.* Sequence co-evolution gives 3D contacts and structures of protein complexes. *Elife* **3**, 1–45 (2014).
 40. Green, A. G. *et al.* Large-scale discovery of protein interactions at residue resolution using co-

- evolution calculated from genomic sequences. *Nat. Commun.* **12**, 1–12 (2021).
41. Jung, J., Genau, H. M. & Behrends, C. Amino acid-dependent mTORC1 regulation by the lysosomal membrane protein SLC38A9. *Mol. Cell. Biol.* **35**, 2479–2494 (2015).
 42. Rebsamen, M. *et al.* SLC38A9 is a component of the lysosomal amino acid sensing machinery that controls mTORC1. *Nature* **519**, 477–481 (2015).
 43. Wang, S. *et al.* Lysosomal amino acid transporter SLC38A9 signals arginine sufficiency to mTORC1. *Science* **347**, 188–94 (2015).
 44. Wyant, G. A. *et al.* mTORC1 activator SLC38A9 is required to efflux essential amino acids from lysosomes and use protein as a nutrient. *Cell* **171**, 642–654.e12 (2017).
 45. Shen, K. & Sabatini, D. M. Ragulator and SLC38A9 activate the Rag GTPases through noncanonical GEF mechanisms. *Proc. Natl. Acad. Sci. U. S. A.* **115**, 9545–9550 (2018).
 46. Hundal, H. S. & Taylor, P. M. Amino acid transceptors: Gate keepers of nutrient exchange and regulators of nutrient signaling. *Am. J. Physiol. - Endocrinol. Metab.* **296**, (2009).
 47. Lee, Y. *et al.* Cryo-EM structure of the human L-type amino acid transporter 1 in complex with glycoprotein CD98hc. *Nat. Struct. Mol. Biol.* **26**, 510–517 (2019).
 48. Yan, R., Zhao, X., Lei, J. & Zhou, Q. Structure of the human LAT1–4F2hc heteromeric amino acid transporter complex. *Nature* **568**, 127–130 (2019).
 49. Shen, A. *Clostridioides difficile* spore formation and germination: new insights and opportunities for intervention. *Annu. Rev. Microbiol.* **74**, 545–566 (2020).
 50. Paredes-Sabja, D., Shen, A. & Sorg, J. A. *Clostridium difficile* spore biology: sporulation, germination, and spore structural proteins. *Trends Microbiol.* **22**, 406–416 (2014).
 51. Francis, M. B., Allen, C. A., Shrestha, R. & Sorg, J. A. Bile acid recognition by the *Clostridium difficile* germinant receptor, CspC, is important for establishing infection. *PLoS Pathog.* **9**, e1003356 (2013).
 52. Shrestha, R., Cochran, A. M. & Sorg, J. A. The requirement for co-germinants during *Clostridium difficile* spore germination is influenced by mutations in *yabG* and *cspA*. *PLOS Pathog.* **15**, e1007681 (2019).
 53. Rohlfing, A. E. *et al.* The CspC pseudoprotease regulates germination of *Clostridioides difficile* spores in response to multiple environmental signals. *PLoS Genet.* **15**, e1008224 (2019).
 54. Singh, S. K., Piscitelli, C. L., Yamashita, A. & Gouaux, E. A competitive inhibitor traps LeuT in an open-to-out conformation. *Science* **322**, 1655–61 (2008).
 55. Zeigler, D. R. *et al.* The origins of 168, W23, and other *Bacillus subtilis* legacy strains. *J. Bacteriol.* **190**, 6983–6995 (2008).
 56. Schaeffer, P., Millet, J. & Aubert, J. P. Catabolic repression of bacterial sporulation. *Proc. Natl. Acad. Sci. U. S. A.* **54**, 704–711 (1965).
 57. Koo, B. M. *et al.* Construction and analysis of two genome-scale deletion libraries for *Bacillus subtilis*. *Cell Syst.* **4**, 291–305.e7 (2017).
 58. Webb, B. & Sali, A. Comparative protein structure modeling using MODELLER. *Curr. Protoc. Protein Sci.* **2016**, 2.9.1–2.9.37 (2016).
 59. Hopf, T. A. *et al.* The EVcouplings Python framework for coevolutionary sequence analysis. *Bioinformatics* **35**, 1582–1584 (2019).
 60. Johnson, L. S., Eddy, S. R. & Portugaly, E. Hidden Markov model speed heuristic and iterative HMM search procedure. *BMC Bioinformatics* **11**, 431 (2010).
 61. Suzek, B. E., Wang, Y., Huang, H., McGarvey, P. B. & Wu, C. H. UniRef clusters: A comprehensive and scalable alternative for improving sequence similarity searches. *Bioinformatics* **31**, 926–932 (2015).
 62. Ramirez-Peralta, A., Zhang, P., Li, Y. qing & Setlow, P. Effects of sporulation conditions on the germination and germination protein levels of *Bacillus subtilis* spores. *Appl. Environ. Microbiol.*

78, 2689–2697 (2012).

63. Bernhards, C. B. & Popham, D. L. Role of YpeB in cortex hydrolysis during germination of *Bacillus anthracis* spores. *J. Bacteriol.* **196**, 3399–3409 (2014).
64. Vepachedu, V. R. & Setlow, P. Localization of SpoVAD to the inner membrane of spores of *Bacillus subtilis*. *J. Bacteriol.* **187**, 5677–5682 (2005).

Acknowledgements

We thank all members of the Bernhardt-Rudner super-group past and present for helpful advice, discussions, and encouragement, Jeremy Amon for feedback and discussion, Paula Montero Llopis and the HMS Microscopy Resources on the North Quad (MicRoN) core for advice on microscopy; Support for this work comes from GM086466, GM127399, DARPA HR001117S0029 (D.Z.R.), and funds from the HMS Dean's Initiative (D.M., A.K., and D.Z.R.). A.G.G. was supported by an NSF Graduate Research Fellowship DGE1144152. L.A. is a Simons Foundation fellow of the Life Sciences Research Foundation. During the revision of our manuscript, DeepMind made its open-source software for the protein structure prediction program AlphaFold2 available. The AlphaFold2-predicted structure for GerAB closely resembles the threaded GerAB model used in our study with an all-atom RMSD of 3.57 Å.

Author contributions

LA, DZR, AK and DM designed the study. KPB, AGG, and AT performed the computational analysis. LA performed the experimental work with assistance from AA and FRG. LA and DZR wrote the manuscript. All authors edited and approved the final manuscript.

Competing interests

The authors declare no competing interests.

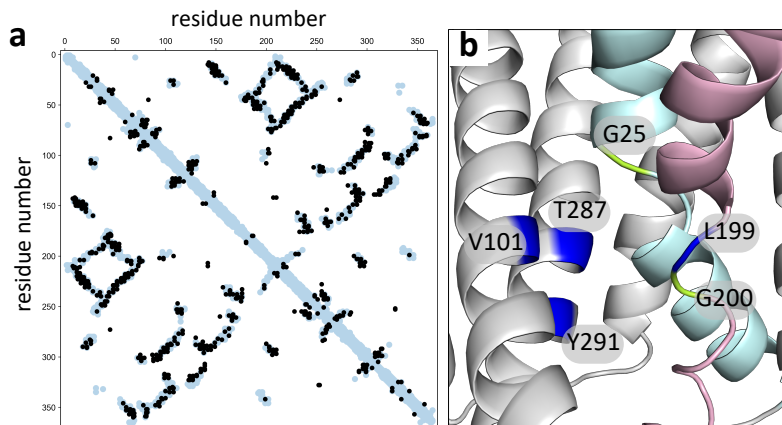


Figure 1. GerAB resembles the L-alanine transporter GkApcT. **a**, Interaction matrix comparing evolutionary coupled (EC) residue pairs in GerAB (black circles) with residue pairs that are ≤ 5 Å apart in the GerAB model (light blue circles) derived from the GkApcT structure. 51% of EC pairs were within 5 Å of each other in the GerAB homology model. **b**, Predicted L-alanine binding pocket in GerAB. TM segments 1 (cyan) and 6 (pink) are highlighted. G25 and G200 that are predicted to generate discontinuities in these helices are shown in green. Residues predicted to line the L-alanine binding pocket are indicated in dark blue. A side-by-side comparison to the L-alanine binding pocket in GkApcT is shown in Supplementary Figure 1B.

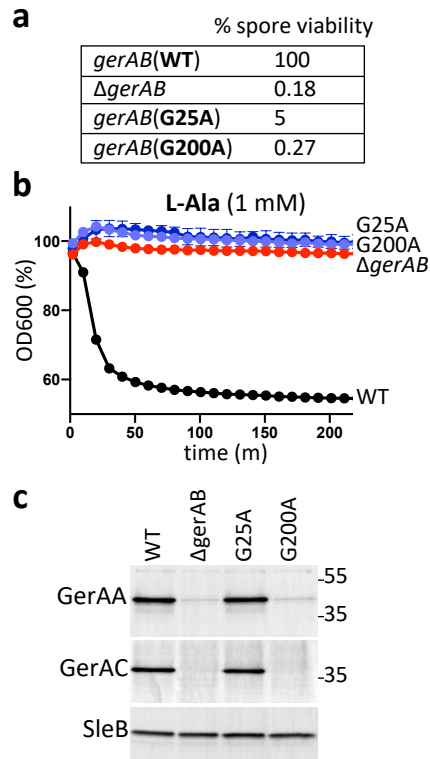


Figure 2. G25 and G200 are required for spore germination. **a**, Spore viability of the indicated strains following heat treatment (80°C for 20 min) and colony formation on LB agar plates. **b**, Spore germination in response to 1 mM L-alanine as assessed by the percent reduction in OD600. Representative data from one of three biological replicates with two technical replicates are shown. **c**, Impact of GerAB variants on the stability of GerAA and GerAC in dormant spores. Immunoblot analysis of spore lysates of the indicated strains using anti-GerAA and anti-His antibodies. SleB was used to control for loading. Molecular weight markers in Kd are indicated on the right. Representative data from one of three biological replicates are shown.

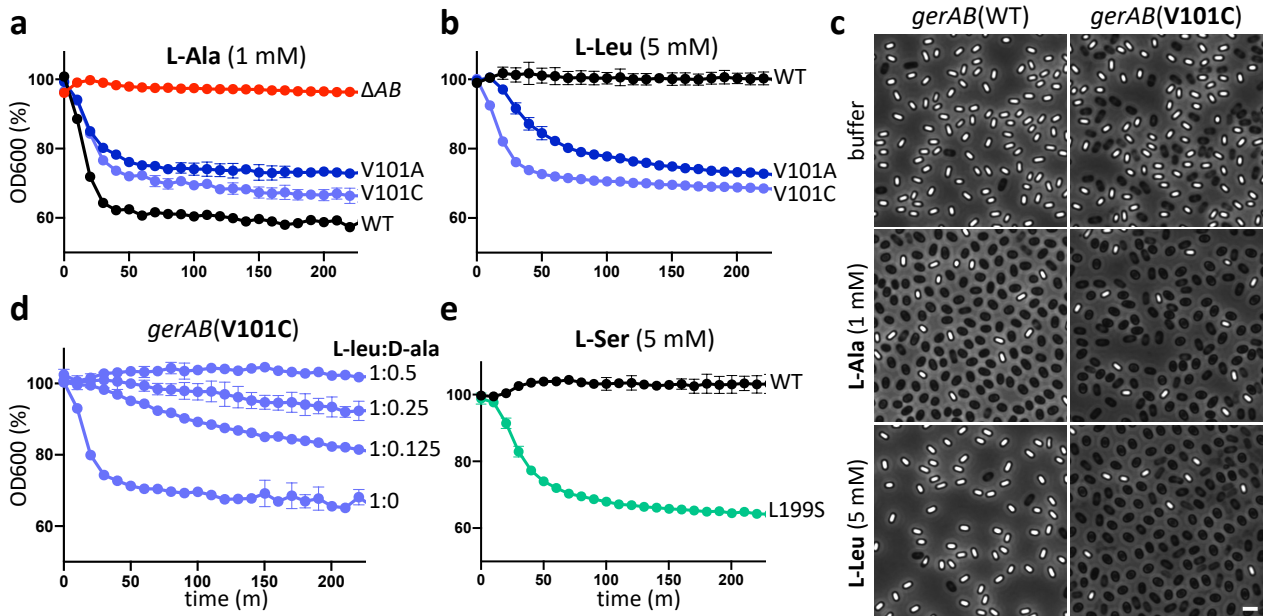


Figure 3. Mutations in the putative L-alanine-binding pocket of GerAB enable spores to respond to L-leucine or L-serine. **a**, Spores harboring *gerAB(V101A)* or *gerAB(V101C)* germinate in response to 1 mM L-alanine with kinetics similar to wild-type (WT). **b**, V101A and V101C mutant spores but not wild-type also germinate in response to 5 mM L-leucine. **c**, Representative phase-contrast images of wild-type and *gerAB(V101C)* spores after 100 min incubation with buffer, 1 mM L-alanine, or 5 mM L-leucine. Larger fields can be found in Supplementary Figure 9. Scale bar, 2 μ m. **d**, D-alanine inhibits germination of *gerAB(V101C)* spores in response to L-leucine. Spores were incubated with 5 mM L-leucine with or without D-alanine at 0.625 mM, 1.25 mM, 2.5 mM and OD600 was monitored. The decrease in optical density in the V101 mutants was reproducibly less than wild-type in the germination assays and is likely due to spontaneous germination of a subset of the spores during their purification. **e**, Spores harboring *gerAB(L199S)* germinate in response to 5 mM L-serine. Representative data from one of three biological replicates with two technical replicates are shown.

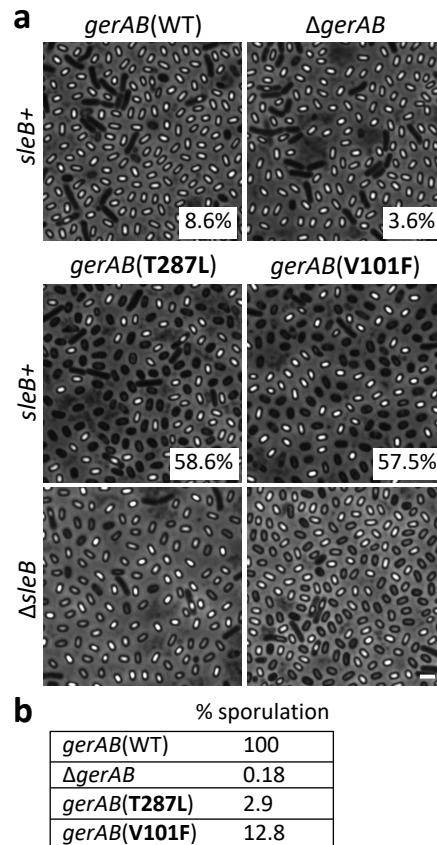
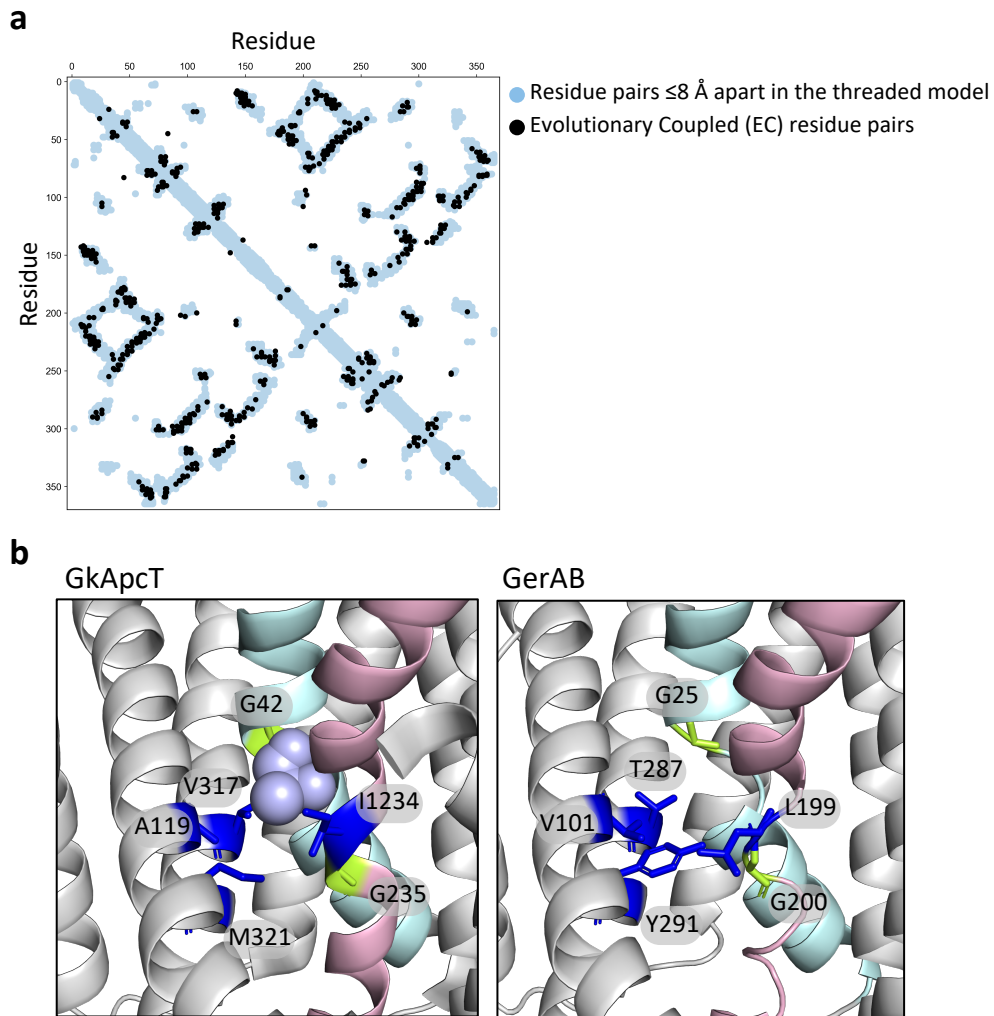
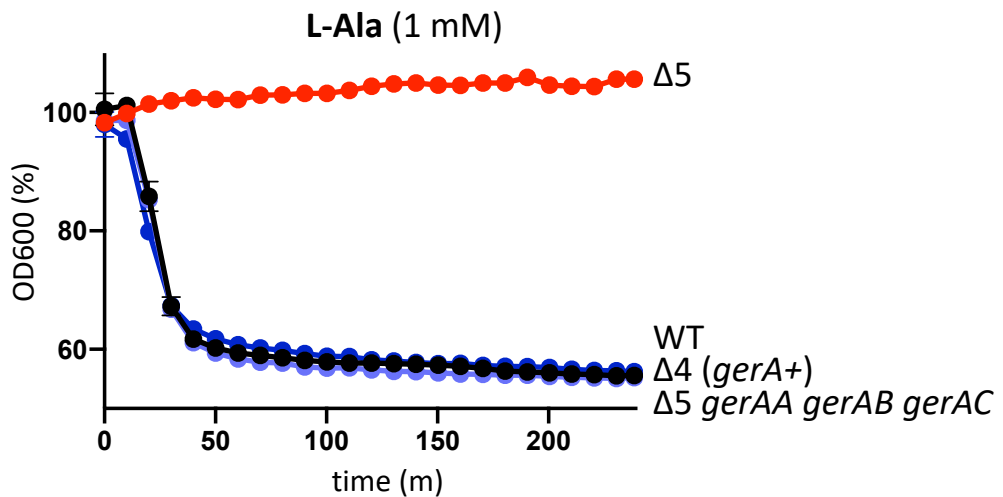


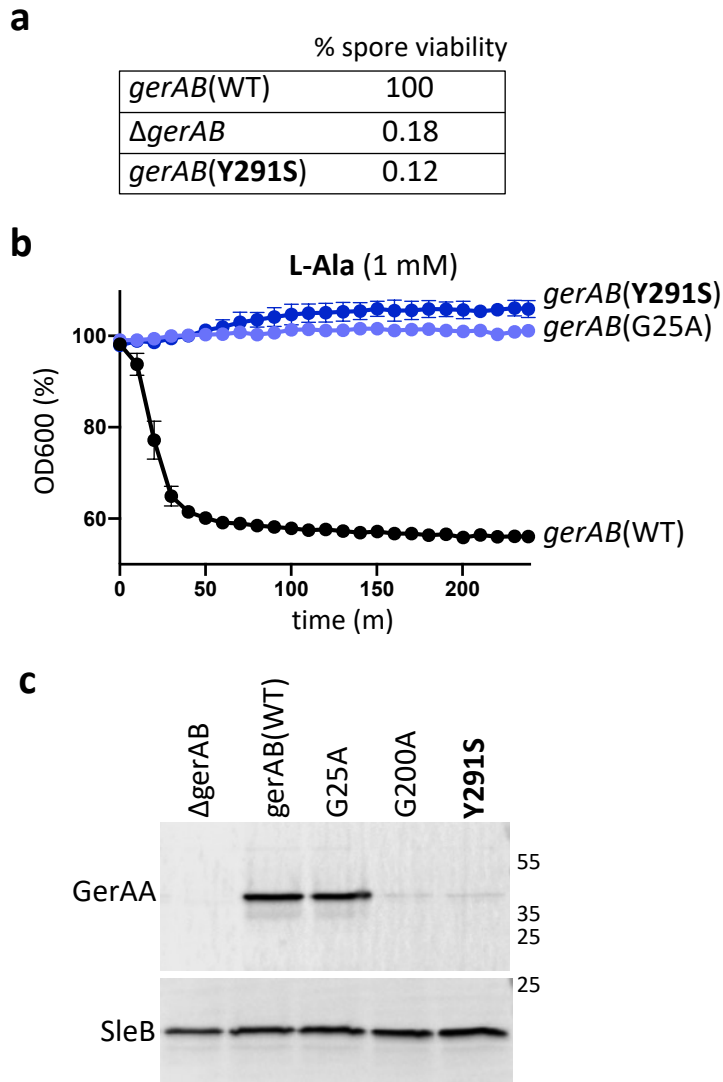
Figure 4. Substitutions of bulkier residues in the putative ligand-binding pocket of GerAB cause premature germination. **a**, Representative phase-contrast images of indicated strains after 30 h of sporulation. The majority of sporulating cells with wild-type *gerAB* or lacking *gerAB* produce phase-bright spores. By contrast, >50% of the cells harboring *gerAB* (T287L) or *gerAB* (V101F) produce phase-dark spores indicative of premature germination. Percentages of phase-dark spores are indicated in the corner of each image. Deletion of *sleB* encoding the spore cortex hydrolase that is activated during germination suppresses the phase-dark phenotype in the *gerAB* mutants. Larger fields can be found in Supplementary Figure 10. Scale bar, 2 μ m. **b**, Spore viability of the strains shown in panel a. Representative data from one of three biological replicates are shown.



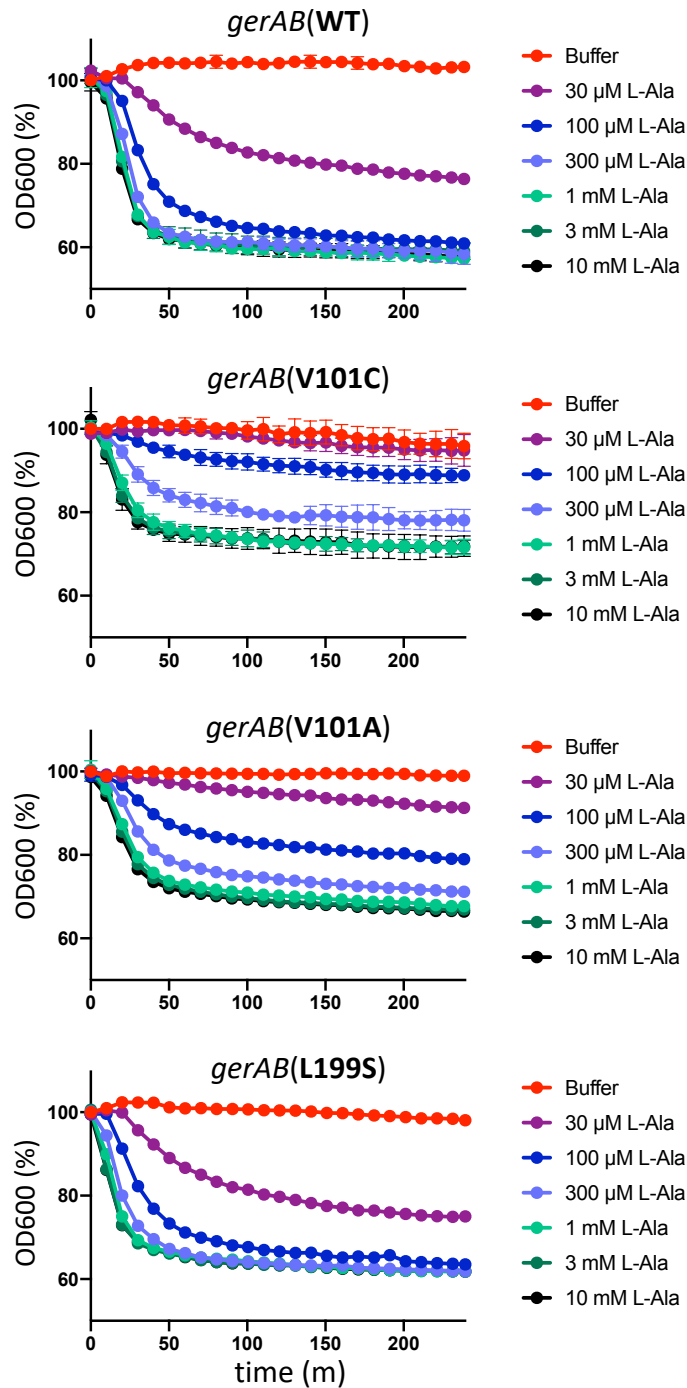
Supplementary Figure 1. GerAB resembles the L-alanine transporter GkApct. **a**, Interaction matrix comparing evolutionary coupled (EC) residue pairs in GerAB (black circles) with residue pairs that are ≤ 8 Å apart in the GerAB model (light blue circles) derived from the GkApct structure. 85% of the EC pairs were within 8 Å of each other in the structural model. **b**, Comparison of the L-alanine binding pocket in GkApct and the predicted pocket in GerAB. TM segments 1 (cyan) and 6 (pink) are highlighted. The glycines in these TM segments that generate kinks in the helices are shown in green. Residues predicted to line the L-alanine binding pocket are indicated in dark blue. L-alanine is shown in light purple. Side chains of the indicated amino acids are shown for GkApct and GerAB but should be interpreted cautiously in the case of the GerAB homology model.



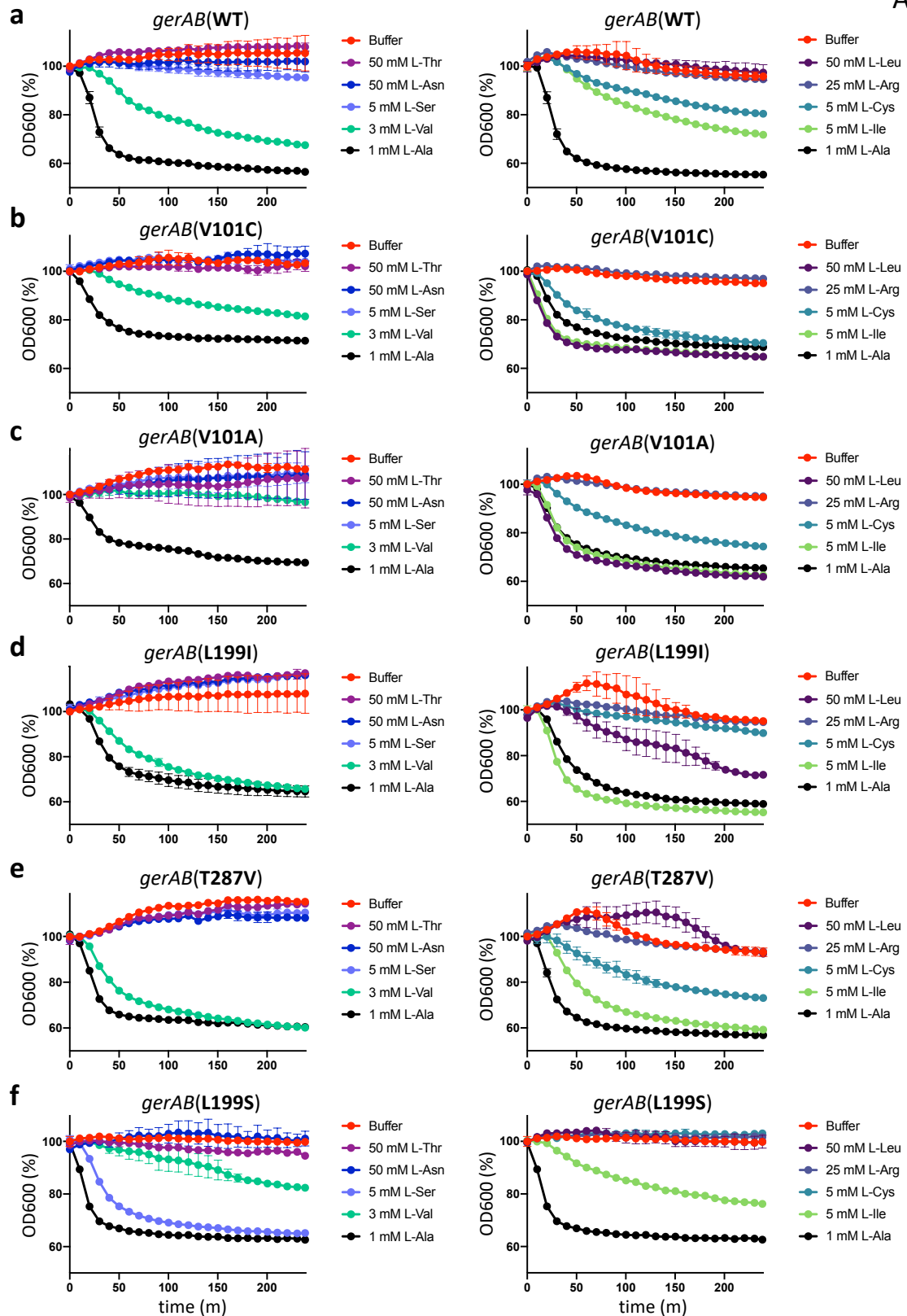
Supplementary Figure 2. Expression of *gerAA*, *gerAB*, and *gerAC* at separate chromosomal loci supports L-alanine germination. Spore germination in response to 1 mM L-alanine was assessed by the percent reduction of initial OD600 over 240 min. Spores lacking all five putative germinant receptor loci ($\Delta 5$) do not respond to L-alanine. Spores with an intact *gerA* operon ($\Delta 4$ *gerA+*) or the three *gerA* genes expressed at separate chromosomal loci ($\Delta 5$ *gerAA gerAB gerAC*) but lacking the other putative receptors germinate with kinetics similar to wild-type (WT). Representative data from one of two biological replicates with two technical replicates are shown.



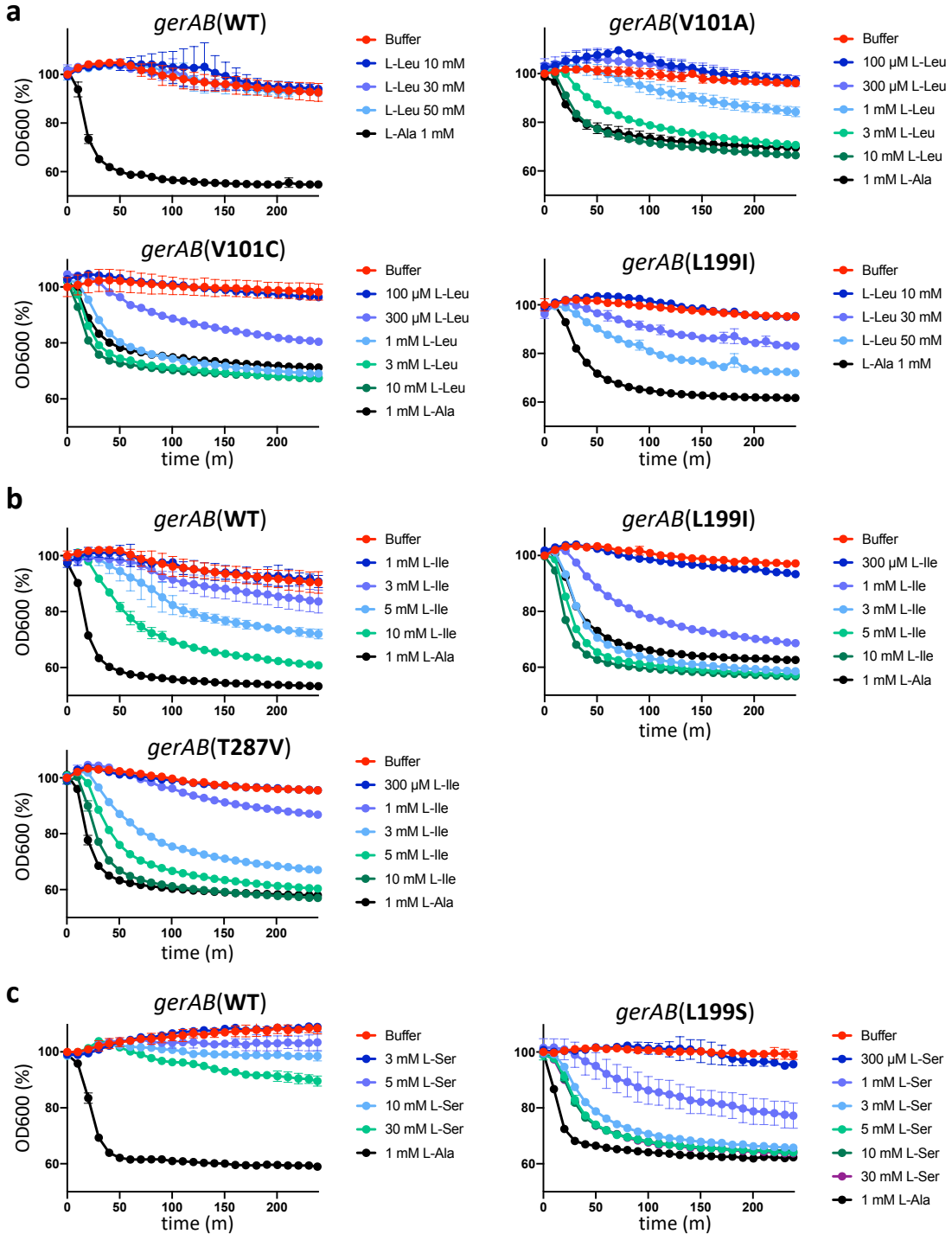
Supplementary Figure 3. GerAA fails to accumulate in spores expressing *gerAB*(Y291S). **a**, Spore viability of the indicated strains following heat treatment (80°C for 20 min) and colony formation on LB agar plates. **b**, Spore germination in response to 1 mM L-alanine as assessed by the percent reduction in initial OD600. Data from one of two biological replicates each with two technical replicates are shown. **c**, Impact of GerAB variants on the stability of GerAA in dormant spores. Immunoblot analysis of spore lysates of the indicated strains using anti-GerAA antibodies. SleB was used to control for loading. Molecular weight markers in Kd are indicated on the right. Representative data from one of three biological replicates are shown.



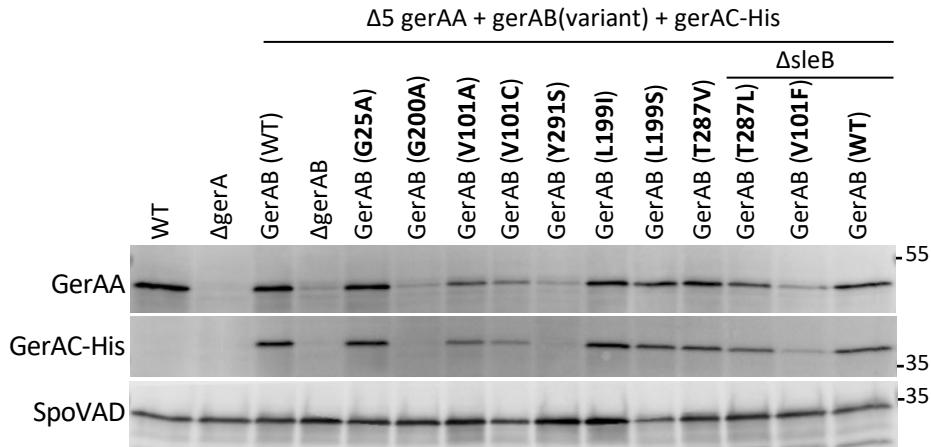
Supplementary Figure 4. Spores harboring GerAB(V101C), GerAB(V101A), or GerAB(L199S) respond to L-alanine with kinetics similar to wild-type. Spore germination of the indicated strains as assayed by the percent reduction in initial OD600 over a 240 min time course. Concentration of L-alanine used to trigger germination varied from 30 μ M to 10 mM. The decrease in optical density in the V101 mutants was reproducibly less than wild-type, likely due to spontaneous germination of a subset of the spores during purification. Representative data from one of two biological replicates with two technical replicates are shown.



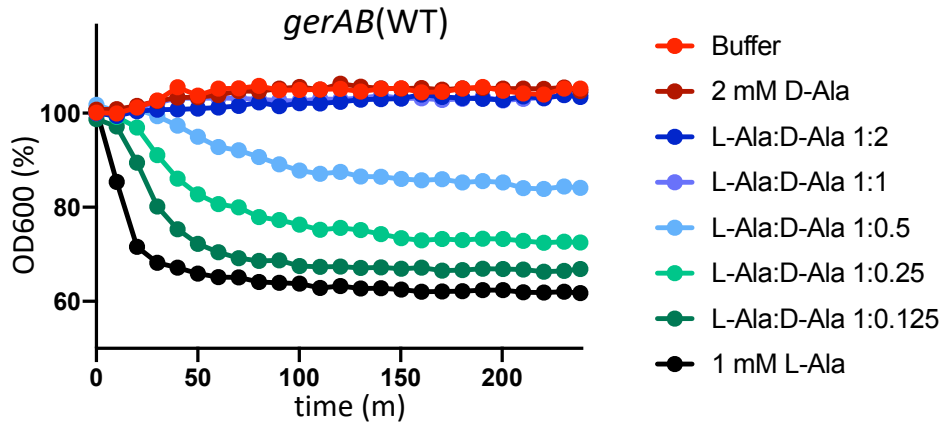
Supplementary Figure 5. Spores harboring GerAB variants with altered germinant specificity respond to most amino acids in a manner similar to wild-type. Spore germination of the indicated strains as assayed by the percent reduction in initial OD600 over a 240 min time course. Concentrations of L-threonine, L-asparagine, L-serine, L-valine, L-alanine, L-leucine, L-arginine, L-cysteine, and L-isoleucine are indicated. The decrease in optical density in the V101 mutants was reproducibly less than wild-type, likely due to spontaneous germination of a subset of the spores during purification. Representative data from one of two biological replicates with two technical replicates are shown.



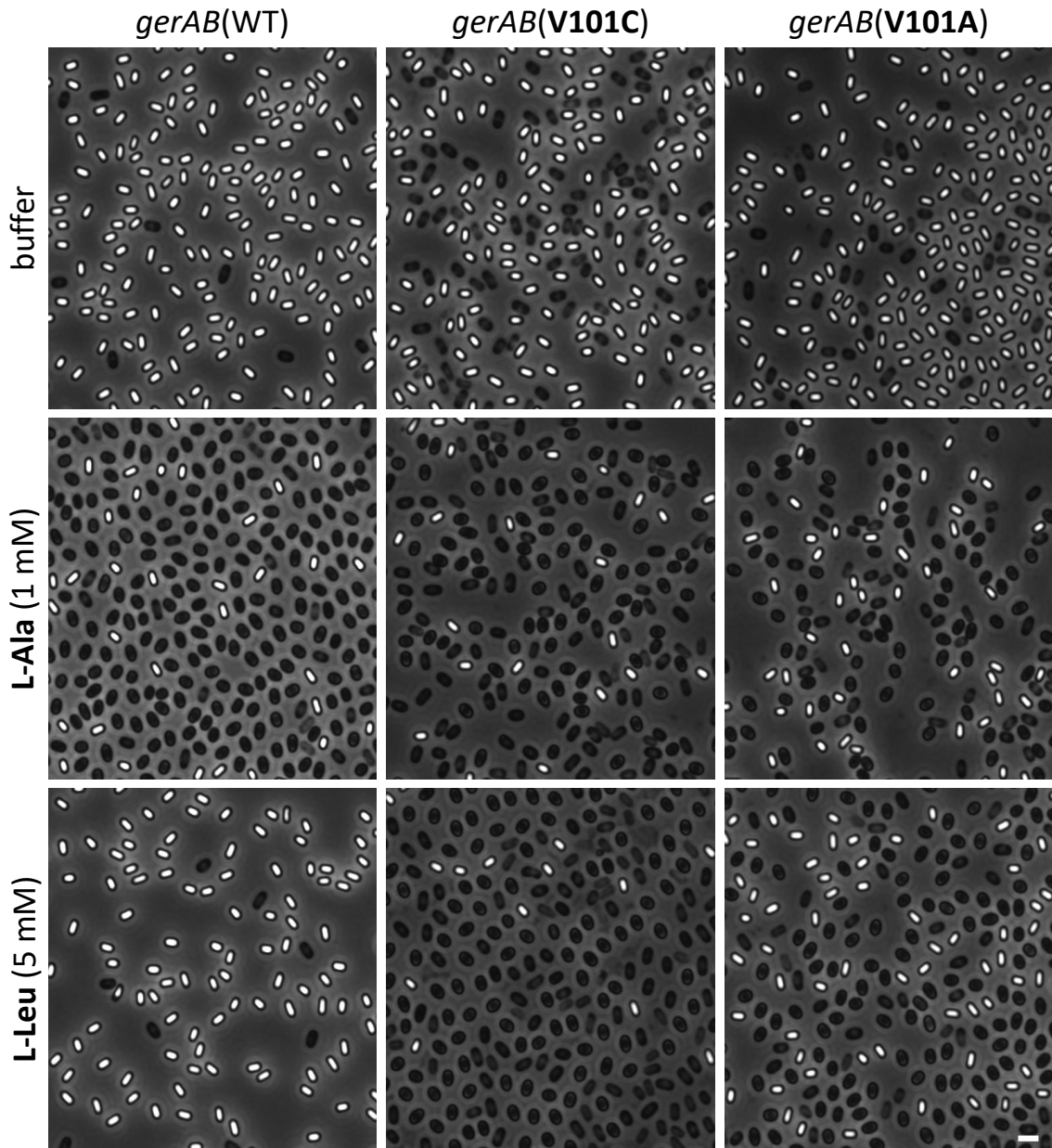
Supplementary Figure 6. Spores harboring GerAB variants with altered germinant specificity respond over a range of amino acid concentrations. **a**, Spore germination of the indicated strains in response to L-leucine. The graphs show the percent reduction in initial OD600 over a 240 min time course in the presence of the indicated concentration of L-leucine. **b**, Spore germination of the indicated strains in response to L-isoleucine. **c**, Spore germination of the indicated strains in response to a range of L-serine concentrations. Representative data from one of two biological replicates with two technical replicates are shown.



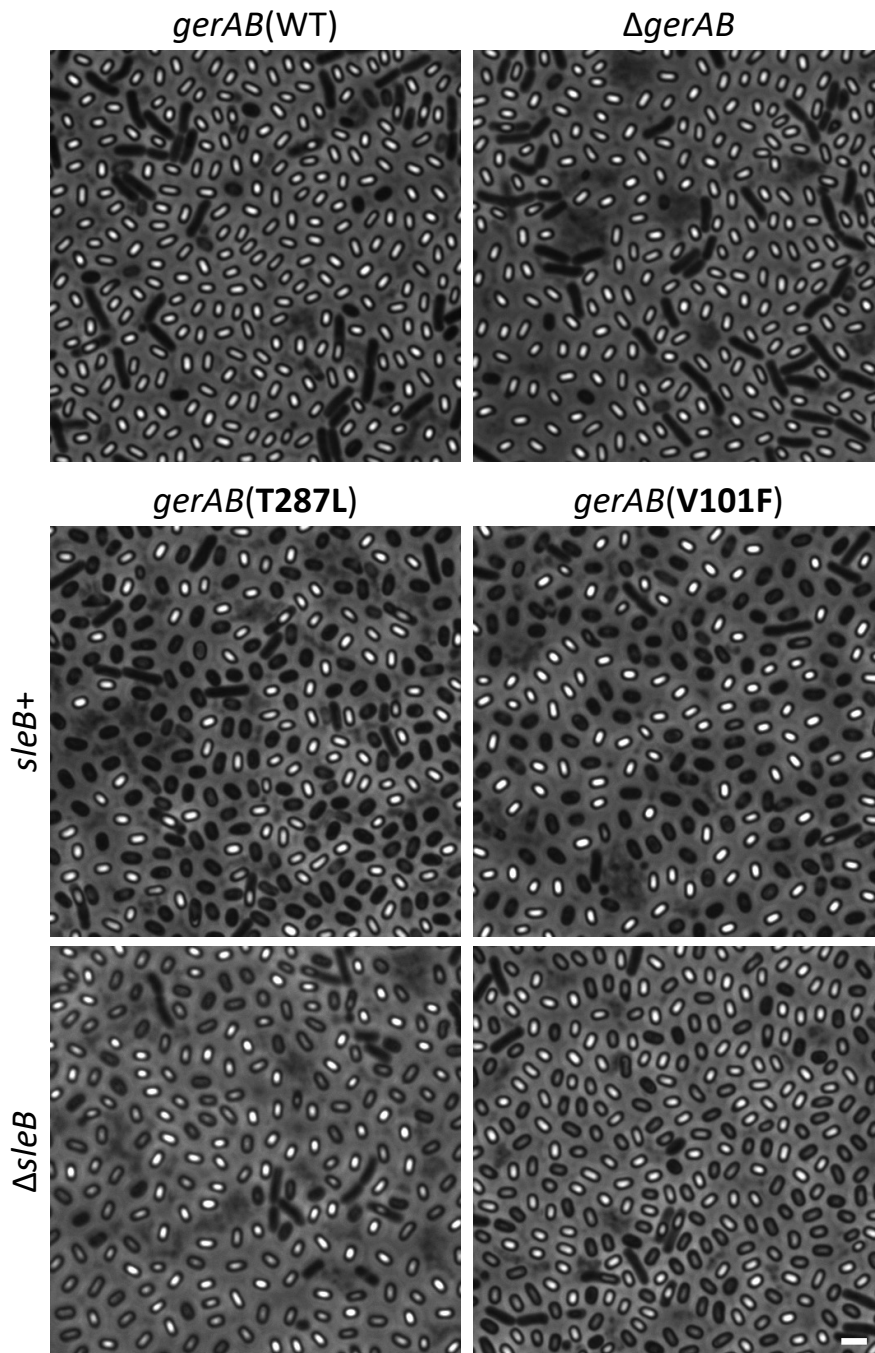
Supplementary Figure 7. Stability of GerAA and GerAC in the GerAB mutants. Immunoblot analysis of spore lysates of the indicated strains using anti-GerAA and anti-His antibodies. The two mutants that prematurely germinate (T287L and V101F) were sporulated in a $\Delta sleB$ background to enable spore purification. The levels of GerAA and GerAC in the GerAB(V101F) mutant were reduced compared to wild-type suggesting that a low level of the activated GerA receptor is sufficient to trigger germination. SpoVAD was used to control for loading. Molecular weight markers in Kd are indicated on the right. Representative data from one of three biological replicates are shown.



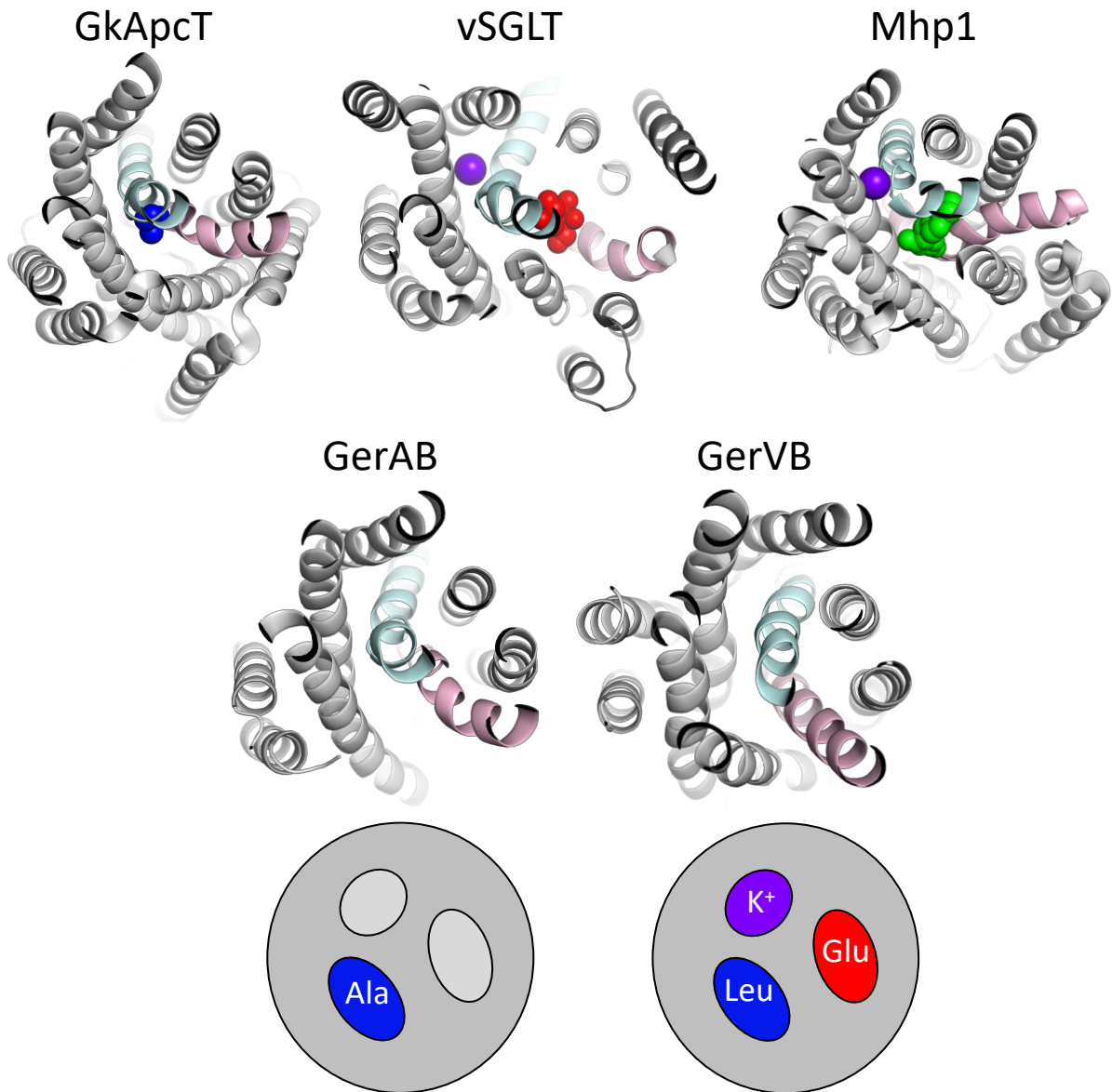
Supplementary Figure 8. D-alanine inhibits germination of spores harboring GerAB(WT) spores in response to L-alanine. Spores were incubated with 1 mM L-alanine with or without D-alanine at the indicated ratios. Representative data from one of two biological replicates are shown.



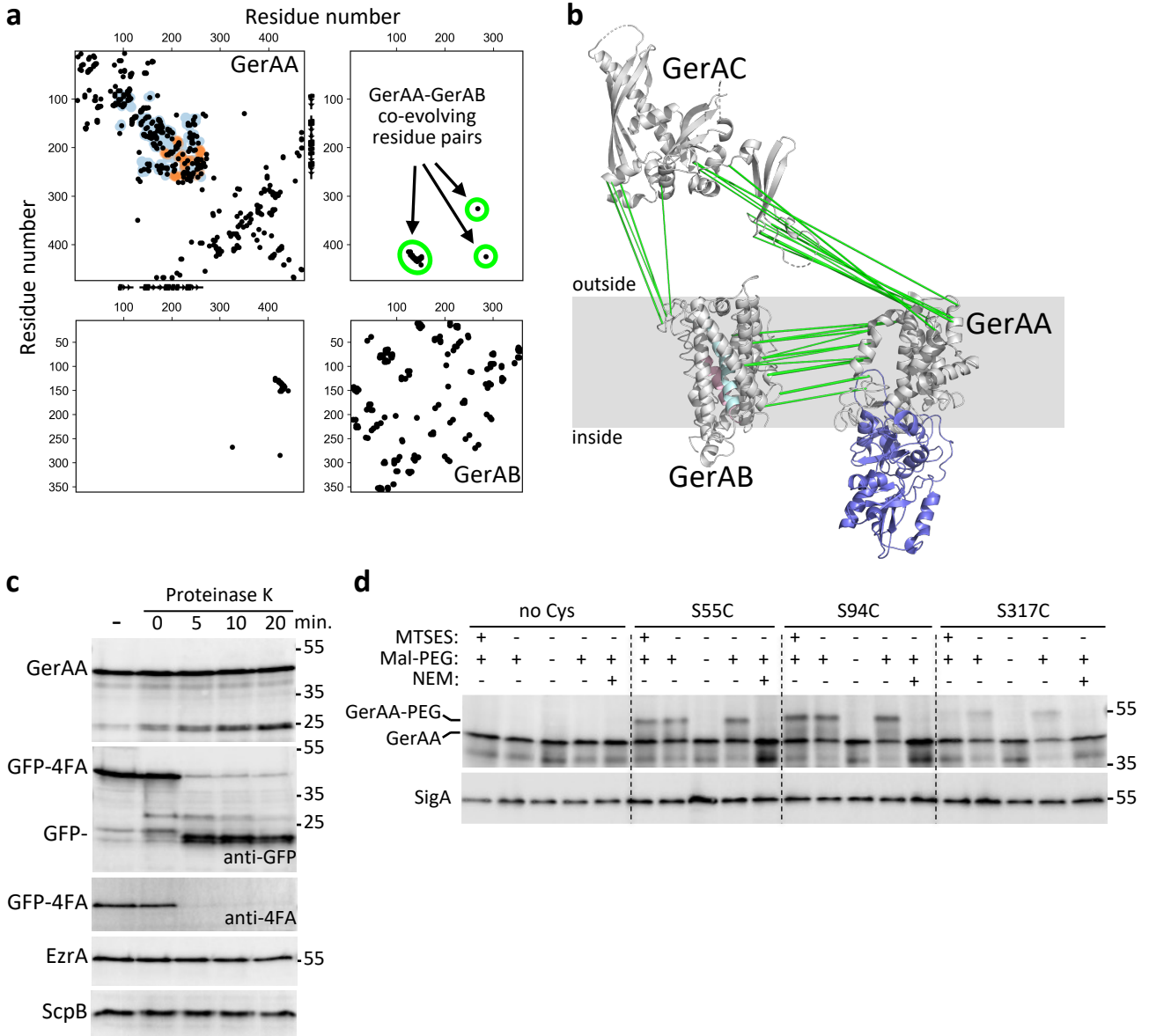
Supplementary Figure 9. Spores harboring GerAB(V101C) and GerAB(V101A) respond to L-leucine. Representative phase-contrast images of wild-type, *gerAB*(V101C), and *gerAB*(V101A) spores after 100 min incubation with buffer, 1 mM L-alanine, or 5 mM L-leucine. Representative data from one of three biological replicates are shown. Scale bar, 2 μ m.



Supplementary Figure 10. Substitutions of bulkier residues in the putative ligand-binding pocket of GerAB cause premature germination. Representative phase-contrast images of indicated strains after 30 h of sporulation. The majority of sporulating cells with wild-type *gerAB* or lacking *gerAB* produce phase-bright spores. Cells expressing *gerAB*(T287L) or *gerAB*(V101F) produce phase-dark spores indicative of premature germination. Deletion of *sleB* encoding the spore cortex hydrolase that is activated during germination suppresses the phase-dark phenotype in the *gerAB* mutants. Representative data from one of three biological replicates are shown. Scale bar, 2 μ m.



Supplementary Figure 11. APC super-family members have similar structural cores with distinct ligand-binding pockets. Top-down views of GkApcT (PDB:5OQT), vSGLT (PDB:3DH4), Mhp1 (PDB:4D1A), the threaded structure of *B. subtilis* GerAB, and the predicted structure of *B. megaterium* GerVB based on evolutionary co-variation. Extra- and intra-cellular loops have been removed for clarity. TM segments equivalent to TM1 (cyan) and TM6 (pink) in GkApcT are highlighted. L-alanine (dark blue), galactose (red), indolylmethyl-hydantoin (green), and sodium ions (purple) present in the crystal structures are shown. Schematic diagrams below GerAB and GerVB with proposed germinant and co-germinant binding pockets for L-alanine (Ala), L-leucine (Leu), D-glucose (Glu), and monovalent cations (K⁺).



Supplementary Figure 12. The soluble N-terminal domain of GerAA resides in the spore core. **a**, Evolutionarily coupled residue pairs in GerAA, GerAB, and between GerAA and GerAB are plotted as black circles. Residue pairs that are ≤ 5 Å apart in the GerAA structural model derived from the GerK3A structure (PDB:6O59) are shown as blue circles. Orange circles show residue pairs in adjacent protomers in the crystal. **b**, Models of GerAA and GerAB derived from co-variation analysis. GerAC is based on the crystal structure of GerBC (PDB:3N54). Green lines highlight the evolutionarily coupled residues between subunits in the putative complex. The soluble N-terminal domain of GerAA is highlighted in blue and is predicted to reside in the spore core (inside). **c**, The soluble N-terminal domain of GerAA is inaccessible to Proteinase K. GerAA, GerAB and GerAC were co-expressed in vegetatively growing *B. subtilis* cells. Protoplasts were treated with Proteinase K for the indicated times and lysates resolved by SDS-PAGE. Immunoblot analysis indicates that the majority of GerAA remains full-length during Proteinase K treatment. A small amount of proteolysis occurs generating ~25 Kda cleavage product that is protected from further proteolysis. Since the anti-GerAA antibodies were raised against the soluble N-terminal domain, these data indicate that this domain is located in the cytoplasm. The 25 KDa cleavage product likely results from Proteinase K digestion of a small extracellular loop. The extracellular domain of the sporulation integral membrane protein GFP-SpoIVFA (4FA), expressed under xylose control is efficiently degraded releasing the intracellular GFP-fusion. The membrane protein EzrA that lacks an extracellular domain and the soluble protein ScpB were inaccessible to the protease. The anti-4FA antibodies were raised against the extracytoplasmic soluble C-terminal domain. Representative data are from one of three biological replicates. **d**, Substituted cysteine accessibility assay (SCAM) indicates that that N-terminal domain of GerAA is intracellular. GerAA(C100S) (no Cys) and the indicated cysteine substitutions were co-expressed with GerAB and GerAC in vegetatively growing cells. Protoplasts were incubated with (+) or without (-) the membrane impermeant Cys crosslinker MTSES, or with (+) or without (-) the membrane permeant Cys crosslinker NEM. The protoplasts were lysed and proteins denatured in the presence (+) or absence (-) of Mal-PEG and GerAA was analyzed by immunoblot. S55C and S94C in the soluble N-terminus were inaccessible to MTSES, while S317C, predicted to reside in an extracellular loop, was partially accessible to MTSES and partially blocked Mal-PEG labeling. All Cys residues were blocked in the presence of NEM and were not further labeled by Mal-PEG. Representative data are from one of three biological replicates. All four GerAA variants were functional (Supplementary **Table 1**). For more information about protease accessibility and SCAM assays see Supplementary Methods.

a	
strain	% spore viability
WT	100
$\Delta 4$ (<i>gerA</i> ⁺)	91.7
$\Delta 5$	0.16
$\Delta 5$ <i>gerAA/gerAB/gerAC</i>	97.0

b	
strain	% spore viability
$\Delta 5$ <i>gerAA/AB(WT)/AC</i>	100
$\Delta 5$	0.18
$\Delta 5$ <i>gerAA/AB(G25A)/AC</i>	5.0
$\Delta 5$ <i>gerAA/AB(G200A)/AC</i>	0.27
$\Delta 5$ <i>gerAA/AB(L199I)/AC</i>	83.3
$\Delta 5$ <i>gerAA/AB(L199S)/AC</i>	40.8
$\Delta 5$ <i>gerAA/AB(V101A)/AC</i>	79.2
$\Delta 5$ <i>gerAA/AB(V101C)/AC</i>	79.8
$\Delta 5$ <i>gerAA/AB(T287V)/AC</i>	99.5
$\Delta 5$ <i>gerAA/AB(Y291A)/AC</i>	0.28
$\Delta 5$ <i>gerAA/AB(Y291S)/AC</i>	0.12
$\Delta 5$ <i>gerAA/AB(T287L)/AC</i>	2.9
$\Delta 5$ <i>gerAA/AB(V101F)/AC</i>	12.8

c	
strain	% spore viability
$\Delta 5$	0.29
$\Delta 5$ <i>gerAA(WT)/AB/AC</i>	100
$\Delta 5$ <i>gerAA(C100S)/AB/AC</i>	>100
$\Delta 5$ <i>gerAA(S55C, C100S)/AB/AC</i>	>100
$\Delta 5$ <i>gerAA(S94C, C100S)/AB/AC</i>	>100
$\Delta 5$ <i>gerAA(C100S, S317C)/AB/AC</i>	32.5

Supplementary Table 1. Spore viability of the mutants in this study. Cells were sporulated by nutrient exhaustion in DS medium (DSM) at 37° C for 48 h. Spore viability was determined by comparing heat resistant (80° C for 20 min) colony forming units (CFUs) of the mutants to wild-type. **a**, Sporulated cultures of *B. subtilis* wild-type and strains containing *gerA* as the sole germinant receptor (native or complemented) have similar survival percentages following heat treatment. **b**, Spore viability of the indicated strains with mutations in *gerAB*. **c**, Spore viability of the indicated strains with mutations in *gerAA*. Representative data are from one of three biological replicates.

GerAB mutant	Phenotypes
V101L	Spore germination in response to 15 mM L-leucine and slightly less responsive to L-cysteine. Spore viability at T30 based on heat-kill assay: 84.15%
T287S	Spore germination response was similar to WT except the mutant did not respond to 5 mM L-leucine. Spore viability at T30 based on heat-kill assay: 78%
V101S	Spore germination response was reduced to all amino acids tested (including L-Alanine). Spore viability at T30 based on heat-kill assay: 23.75%.
V101T	Spore germination in response to 50 mM L-leucine. Spore viability at T30 based on heat-kill assay: 57.5%
Y291A	Spore germination response was impaired with all amino acids tested (including L-alanine). Spore viability at T30 based on heat-kill assay: 0.3%.
L199V	Some phase-dark spores at T30 indicative of premature germination. After spore purification most spores were phase-dark. Spore viability at T30 based on heat-kill assay: 50%.
L199A	Some phase-dark spores at T30 indicative of premature germination. After spore purification most spores were phase-dark. Spore viability at T30 based on heat-kill assay: 66%.
I196A	Spore germination in response to L-alanine similar to WT. Non-responsive to L-Ser, L-Ile, L-Val, L-Cys. Spore viability at T30 based on heat-kill assay: 93.58%.
G25V	GerAA subunit unstable based on immunoblot as reported previously by A. Moir. Spore viability at T30 based on heat-kill assay: 0.65%.

Supplementary Table 2. Summary of GerAB mutants tested but not analyzed in detail. This table describes the GerAB mutants that were generated and underwent initial characterization but not rigorously analyzed.