

Mapping neurotransmitter systems to the structural and functional organization of the human neocortex

Justine Y. Hansen¹, Golia Shafiei¹, Ross D. Markello¹, Kelly Smart^{2,3}, Sylvia M. L. Cox⁴, Yanjun Wu^{2,3}, Jean-Dominique Gallezot^{2,3}, Étienne Aumont⁵, Stijn Servaes⁶, Stephanie G. Scala⁴, Jonathan M. DuBois⁷, Gabriel Wainstein⁸, Gleb Bezgin⁶, Thomas Funck⁹, Taylor W. Schmitz¹⁰, R. Nathan Spreng¹, Jean-Paul Soucy¹, Sylvain Baillet¹, Synthia Guimond^{11,12}, Jarmo Hietala¹³, Marc-André Bédard^{1,5}, Marco Leyton^{1,4}, Eliane Kobayashi¹, Pedro Rosa-Neto^{1,6}, Nicola Palomero-Gallagher¹⁴, James M. Shine⁸, Richard E. Carson^{3,4}, Lauri Tuominen¹¹, Alain Dagher¹, Bratislav Misic^{1*}

¹Montréal Neurological Institute, McGill University, Montréal, QC, Canada

²Yale PET Center, Yale School of Medicine, New Haven, CT 06510, USA

³Department of Radiology and Biomedical Imaging, Yale School of Medicine, New Haven, CT 06520, USA

⁴Department of Psychiatry, McGill University, Montréal, QC, Canada

⁵Cognitive Pharmacology Research Unit, UQAM, Montréal, QC, Canada

⁶The McGill University Research Centre for Studies in Aging, Douglas Hospital, McGill University, Montréal, QC, Canada

⁷Biogen Inc., Cambridge, MA, USA

⁸Brain and Mind Centre, The University of Sydney, Sydney, NSW, Australia

⁹Julich Forschungszentrum, Julich, North Rhine-Westphalia

¹⁰Department of Physiology and Pharmacology, University of Western Ontario, London, ON, Canada

¹¹Department of Psychiatry, The Royal's Institute of Mental Health Research, University of Ottawa, ON, Canada

¹²Department of Psychoeducation and Psychology, University of Quebec in Outaouais, Gatineau, QC, Canada

¹³Department of Psychiatry, University of Turku and Turku University Hospital, Finland

¹⁴Institute of Neuroscience and Medicine (INM-1), Research Centre Jülich, Jülich, Germany

Abstract

Neurotransmitter receptors support the propagation of signals in the human brain. How receptor systems are situated within macroscale neuroanatomy and how they shape emergent function remains poorly understood, and there exists no comprehensive atlas of receptors. Here we collate positron emission tomography scans in >1 200 healthy individuals to construct a whole-brain 3-D normative atlas of 18 receptors and transporters across 9 different neurotransmitter systems. We find that receptor profiles align with structural connectivity and mediate function, including neurophysiological oscillatory dynamics and resting state hemodynamic functional connectivity. Using the Neurosynth cognitive atlas, we uncover a topographic gradient of overlapping receptor distributions that separates extrinsic and intrinsic psychological processes. Finally, we find both expected and novel associations between receptor distributions and cortical thinning patterns across 13 disorders. We replicate all findings in an independently collected autoradiography dataset. This work demonstrates how chemoarchitecture shapes brain structure and function, providing a new direction for studying multi-scale brain organization.

INTRODUCTION

The brain is a complex system that integrates signals across spatial and temporal scales to support cognition and behaviour. The key neural signalling molecule is the neurotransmitter: chemical agents that relay messages across synapses. While neurotransmitters carry the message, neurotransmitter receptors act as ears that cover the cellular membrane, determining how the postsynaptic neuron will respond. By modulating the excitability and firing rate of the cell, neurotransmitter receptors effectively mediate the transfer and propagation of electrical impulses. As such, neurotransmitter receptors drive synaptic plasticity, modify neural states, and ultimately shape network-wide communication [112, 114, 128].

How spatial distributions of neurotransmitter receptors relate to brain structure and shape brain function at the system level remains unknown. Recent technological advances allow for high resolution reconstructions of the brain's wiring patterns. These wiring patterns display non-trivial architectural features including specialized network modules that support the segregation of information [119], as well as densely interconnected hub regions that are thought to support the integration of information [118, 129]. The spatial arrangement of neurotransmitter receptors on this network presumably guides the flow of information and the emergence of cognitive function. Therefore, understanding the link between structure and function is inherently incomplete without a comprehensive map of the chemoarchitecture of the brain [82, 144, 146].

A primary obstacle to studying the relative density distributions of receptors across multiple neurotransmitter systems is the lack of comprehensive open accessible

* bratislav.misic@mcgill.ca

Receptor/ transporter	Neurotransmitter	Tracer	Measure	N	Age	References
D ₁	dopamine	[¹¹ C]SCH23390	BP _{ND}	13	33 ± 13	Kaller et al., 2017 [56]
D ₂	dopamine	[¹¹ C]FLB-457	BP _{ND}	37	48.4 ± 16.9	Smith et al., 2019 [101, 117]
D ₂	dopamine	[¹¹ C]FLB-457	BP _{ND}	55	32.5 ± 9.7	Sandiego et al., 2015 [101, 102, 115, 117, 143]
DAT*	dopamine	[¹²³ I]-FP-CIT	SUVR	174	61 ± 11	Dukart et al., 2018 [29]
NET*	norepinephrine	[¹¹ C]MRB	BP _{ND}	77	33.4 ± 9.2	Ding et al., 2010 [11, 19, 27, 100]
5-HT _{1A}	serotonin	[¹¹ C]WAY-100635	BP _{ND}	36	26.3 ± 5.2	Savli et al., 2012 [105]
5-HT _{1B}	serotonin	[¹¹ C]P943	BP _{ND}	65	33.7 ± 9.7	Gallezot et al., 2010 [9, 39, 67, 74, 75, 86, 103]
5-HT _{1B}	serotonin	[¹¹ C]P943	BP _{ND}	23	28.7 ± 7.0	Savli et al., 2012 [105]
5-HT _{2A}	serotonin	[¹¹ C]Cimbi-36	B _{max}	29	22.6 ± 2.7	Beliveau et al., 2017 [12]
5-HT ₄	serotonin	[¹¹ C]SB207145	B _{max}	59	25.9 ± 5.3	Beliveau et al., 2017 [12]
5-HT ₆	serotonin	[¹¹ C]GSK215083	BP _{ND}	30	36.6 ± 9.0	Radhakrishnan et al., 2018 [90, 91]
5-HTT*	serotonin	[¹¹ C]DASB	B _{max}	100	25.1 ± 5.8	Beliveau et al., 2017 [12]
α ₄ β ₂	acetylcholine	[¹⁸ F]flubatine	V _T	30	33.5 ± 10.7	Hillmer et al., 2016 [8, 50]
M ₁	acetylcholine	[¹¹ C]LSN3172176	BP _{ND}	24	40.5 ± 11.7	Naganawa et al., 2021 [76]
VACHT*	acetylcholine	[¹⁸ F]FEOBV	SUVR	4	37 ± 10.2	PI: Lauri Tuominen & Synthia Guimond
VACHT*	acetylcholine	[¹⁸ F]FEOBV	SUVR	18	66.8 ± 6.8	Aghourian et al., 2017 [1]
VACHT*	acetylcholine	[¹⁸ F]FEOBV	SUVR	5	68.3 ± 3.1	Bedard et al., 2019 [10]
VACHT*	acetylcholine	[¹⁸ F]FEOBV	SUVR	3	66.6 ± 0.94	PI: Taylor W. Schmitz & R. Nathan Spreng
mGluR ₅	glutamate	[¹¹ C]ABP688	BP _{ND}	73	19.9 ± 3.04	Smart et al., 2019 [116]
mGluR ₅	glutamate	[¹¹ C]ABP688	BP _{ND}	22	67.9 ± 9.6	PI: Pedro Rosa-Neto
mGluR ₅	glutamate	[¹¹ C]ABP688	BP _{ND}	28	33.1 ± 11.2	DuBois et al., 2016 [28]
GABA _{A/BZ}	GABA	[¹¹ C]flumazenil	B _{max}	16	26.6 ± 8	Nørgaard et al., 2021 [78]
H ₃	histamine	[¹¹ C]GSK189254	V _T	8	31.7 ± 9.0	Gallezot et al., 2017 [40]
CB ₁	cannabinoid	[¹¹ C]OMAR	V _T	77	30.0 ± 8.9	Normandin et al., 2015 [31, 77, 79, 92]
MOR	opioid	[¹¹ C]carfentanil	BP _{ND}	204	32.3 ± 10.8	Kantonen et al., 2020 [57]

TABLE 1. **Neurotransmitter receptors and transporters included in analyses** | BP_{ND} = non-displaceable binding potential; V_T = tracer distribution volume; B_{max} = density (pmol/ml) converted from binding potential (5-HT) or distributional volume (GABA) using autoradiography-derived densities; SUVR = standard uptake value ratio. Neurotransmitter receptor maps without citations refer to unpublished data. In those cases, contact information for the study PI is provided in Table S3. Table S3 also includes more extensive methodological details such as PET camera, number of males and females, modelling method, reference region, scan length, and modelling notes. Asterisks indicate transporters.

datasets. An important exception is the autoradiography dataset of 15 neurotransmitter receptors and receptor binding sites, collected in three post-mortem brains [144]. However, these autoradiographs are only available in 44 cytoarchitecturally defined cortical areas. Alternatively, positron emission tomography (PET) can estimate *in vivo* receptor concentrations across the whole brain. Despite the relative ease of mapping receptor densities using PET, there are nonetheless difficulties in constructing a comprehensive PET dataset of neurotransmitter receptors. Due to the radioactivity of the injected PET tracer, mapping multiple different receptors in the same individual is not considered a safe practice. Combined with the fact that PET image acquisition is relatively expensive, cohorts of control subjects are small and typically only include one or two tracers. Therefore, constructing a comprehensive atlas of neurotransmitter receptor densities across the brain requires extensive data sharing efforts from multiple research groups [12, 30, 78].

Here we curate and share an atlas of PET-derived whole-brain neurotransmitter receptor maps from 18 unique neurotransmitter receptors, receptor binding sites, and transporters, across 9 different neurotransmitter systems and over 1200 healthy individuals, available at https://github.com/netneurolab/hansen_receptors. We use multiple imaging modalities to comprehensively situate neurotransmitter receptor densities within microscale and macroscale neural architectures. Using diffusion weighted MRI and functional MRI, we show that neurotransmitter receptor densities follow the organizational principles of the brain's structural and functional connectomes. Moreover, we find that neurotransmitter receptor densities shape magnetoencephalography (MEG)-derived oscillatory neural dynamics. To determine how neurotransmitter receptor distributions affect cognition and disease, we map receptor densities to meta-analytic (Neurosynth-derived) functional activations, where we uncover a spatially covarying axis of neuromodulators and mood-related processes.

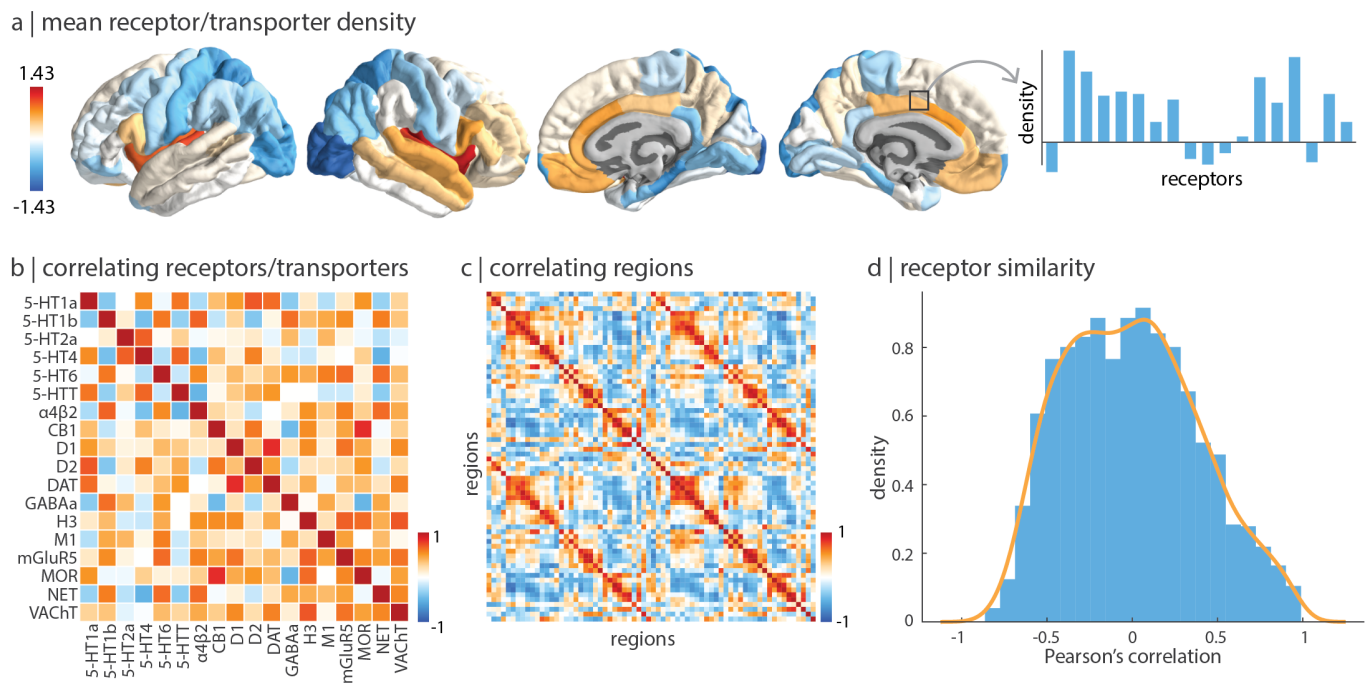


Figure 1. Constructing a cortical neurotransmitter receptor and transporter atlas | PET maps for 18 different neurotransmitter receptors and transporters were z-scored and collated into a single neurotransmitter receptor atlas. (a) The mean neurotransmitter receptor/transporter density across the cortex reveals that neurotransmitter receptors and transporters are enriched in insular and limbic regions. (b) Pearson's correlation between pairs of receptor/transporter distributions across 68 brain regions. (c) The “receptor similarity” matrix is constructed by correlating (Pearson's r) receptor/transporter fingerprints between pairs of brain regions. (d) The distribution of receptor similarity values.

Next, we link receptor distributions to ENIGMA-derived patterns of cortical atrophy across 13 neurological, psychiatric, and neurodevelopmental disorders, uncovering specific receptor-disorder links. We validate our findings and extend the scope of the investigation to additional receptors using an independently collected autoradiography neurotransmitter receptor dataset [145]. Altogether we demonstrate that, across spatial and temporal scales, chemoarchitecture consistently plays a key role in brain function.

RESULTS

A comprehensive cortical profile of neurotransmitter receptor densities was constructed by collating PET images from a total of 18 different neurotransmitter receptors, transporters, and receptor binding sites, across 9 different neurotransmitter systems, including dopamine, norepinephrine, serotonin, acetylcholine, glutamate, GABA, histamine, cannabinoid, and opioid (Fig. S1). All PET images are acquired in healthy participants (see Table 1 for a complete list of receptors and transporters, corresponding PET tracers, ages, and number of participants). Each PET tracer map was processed according to the best practice for the radioligand; for detailed acquisition and processing protocols see the publications

listed in Table 1. A group-average tracer map was constructed across participants within each study. To mitigate variation in image acquisition, and to ease biological interpretability, all PET tracer maps were parcellated into the same 68 cortical regions and z-scored [26]. After parcellating and normalizing the data, maps from different studies of the same tracer were averaged together (Fig. S2 shows consistencies across studies). In total, we present tracer maps for 18 unique neurotransmitter receptors and transporters from a total of 1210 healthy participants, resulting in a 68×18 matrix of relative neurotransmitter receptor/transporter densities. Finally, we repeat all analyses in an independently collected autoradiography dataset of 15 neurotransmitter receptors (Table S1; [145]), and across alternative brain parcellations [18].

Receptor distributions reflect structural and functional organization

Consistent with previous reports, we find that mean density across all neurotransmitter receptors and transporters are distributed heterogeneously across the cortex, with enrichment in insular and cingulate regions (Fig. 1a; [46, 145]). In addition, receptor/transporter maps are generally positively correlated with one an-

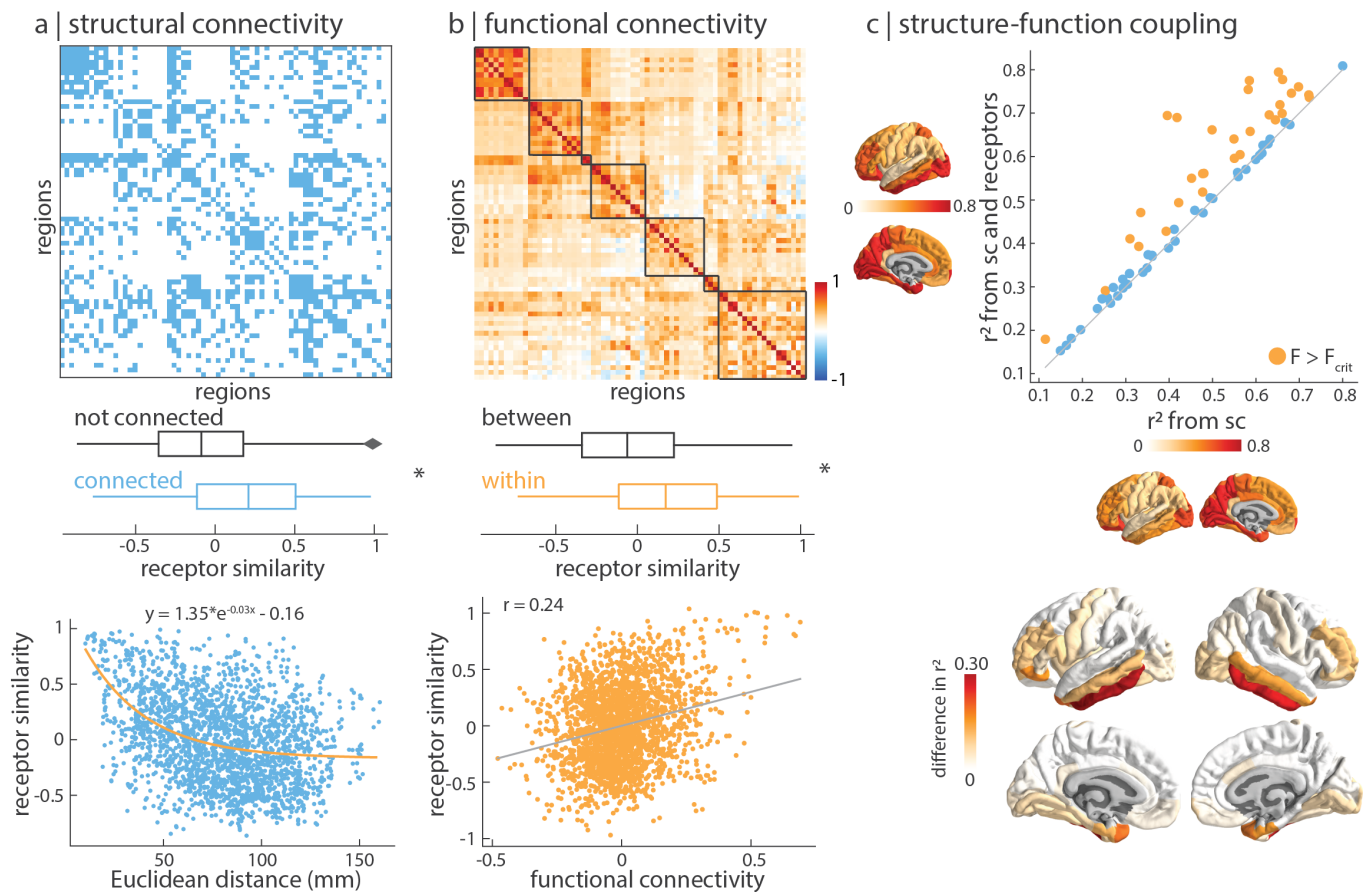


Figure 2. Receptor distributions reflect structural and functional organization | (a) Top: group-consensus structural connectivity matrix. Middle: receptor similarity is significantly greater between regions that are physically connected, against distance- and edge length-preserving null structural connectivity matrices ($p = 0.0001$; [13]). Bottom: receptor similarity decreases exponentially with Euclidean distance. (b) Top: group-average functional connectivity matrix, ordered by intrinsic networks [142]. Middle: receptor similarity is significantly greater within regions in the same functional network ($p_{spin} = 0.014$). Bottom: receptor similarity is positively correlated with functional connectivity ($r = 0.24$, $p = 3 \times 10^{-32}$). (c) Regional structure-function coupling was computed as the fit (R^2_{adj}) between measures of structural connectivity and functional connectivity. Top: structure-function coupling at each brain region is plotted when receptor similarity is excluded (x -axis) and included (y -axis) in the model. Yellow points indicate brain regions where receptor information significantly augments structure-function coupling ($F > F_{critical}$). Bottom: the difference in adjusted R^2 when receptor similarity is and isn't included in the regression model. Asterisks in panels (a) and (b) denote significance. Boxplots in panels (a) and (b) represent the 1st, 2nd (median) and 3rd quartiles, whiskers represent the non-outlier end-points of the distribution, and diamonds represent outliers.

other (Fig. 1b). To quantify the potential for two brain regions to be similarly modulated by endogenous or exogenous input, we compute the correlation of receptor/transporter fingerprints between pairs of brain regions (Fig. 1c, d). Hereafter, we refer to this quantity as “receptor similarity”, analogous to other commonly used measures of inter-regional attribute similarity including anatomical covariance [34], morphometric similarity [109], gene coexpression [5, 37, 93], temporal profile similarity [111], and microstructural similarity [84]. We confirm that no single receptor exerts undue influence on the receptor similarity matrix (see *Sensitivity and robustness analyses*).

Using group-consensus structural and functional con-

nectomes from 70 individuals (see *Methods* for details), we show that neurotransmitter receptor organization reflects structural and functional connectivity. Specifically, we find that receptor similarity is greater between pairs of brain regions that are structurally connected, suggesting that anatomically connected areas are likely to be co-modulated (Fig. 2a). To ensure the observed relationship between structural connections and receptor similarity is not due to spatial proximity or network topography, we assessed significance against density-, degree- and edge length-preserving surrogate structural connectivity matrices ($p = 0.0001$, 10 000 repetitions [13]). Additionally, we find that receptor similarity decays exponentially with Euclidean distance a finding that has been reported

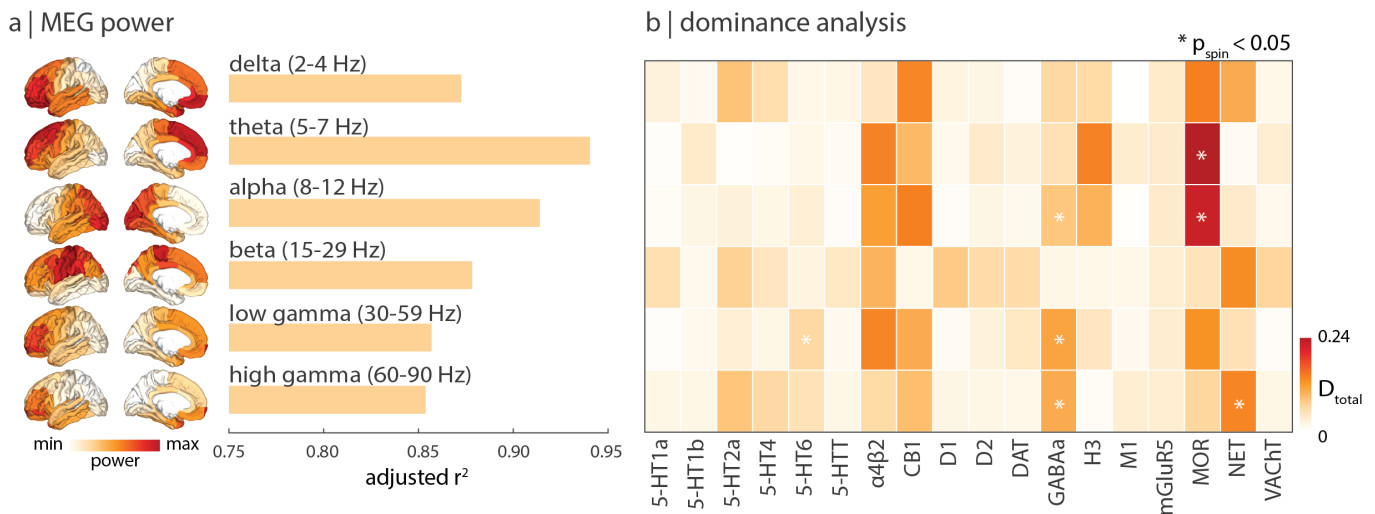


Figure 3. Receptor profiles shape oscillatory neural dynamics | We fit a multilinear regression model that predicts MEG-derived power distributions from receptor distributions. (a) Receptor distributions closely correspond to all six MEG-derived power bands ($0.85 \leq R_{\text{adj}}^2 \leq 0.94$). (b) Dominance analysis reveals which receptors/transporters contribute most to the fit. Asterisks indicate significant dominance ($p_{\text{spin}} < 0.05$).

for correlated gene expression [35], temporal similarity [111], structural connectivity [45, 52, 95, 99], and functional connectivity [98].

Likewise, receptor similarity is significantly greater between brain regions that are within the same intrinsic networks than between different intrinsic networks, suggesting that areas that are in the same cognitive system tend to have similar receptor profiles ($p_{\text{spin}} = 0.014$, 10 000 repetitions, Fig. 2b; [142, 144]). Significance was assessed non-parametrically by permuting the intrinsic network affiliations while preserving spatial autocorrelation (“spin test”; [3, 66]). We also find that receptor similarity is significantly correlated with functional connectivity, after regressing Euclidean distance from both matrices ($r = 0.24$, $p = 3 \times 10^{-32}$). In other words, we observe that brain regions with similar receptor and transporter composition show greater functional co-activation. Collectively, these results demonstrate that receptor profiles are systematically aligned with patterns of structural and functional connectivity above and beyond spatial proximity, consistent with the notion that receptor profiles guide inter-regional signaling.

Since neurotransmitter receptor distributions are organized according to structural and functional architectures, we next asked whether receptor distributions might augment the coupling between brain structure and function. To quantify structure-function coupling, we used a method previously developed and validated [134] in which regional structure-function coupling is defined as the adjusted R^2 of a multilinear regression model that fits measures of the structural connectome to functional connectivity. We then included receptor similarity as an independent variable, to assess how receptor information changes structure-function coupling. We find

that receptor information significantly augments the coupling between brain structure and function in multiple regions, especially the inferior temporal and dorsolateral prefrontal cortex ($F > F_{\text{critical}}$; Fig. 2c).

Receptor profiles shape oscillatory neural dynamics

Given that neurotransmitter receptors modulate the firing rates of neurons and therefore population activity, we sought to relate the cortical patterning of neurotransmitter receptors to neural oscillations [113]. We used MEG power spectra across six canonical frequency bands from 33 unrelated participants in the Human Connectome Project (see *Methods* for details; [43, 110, 131]). We fit a multiple linear regression model that predicts the cortical power distribution of each frequency band from neurotransmitter receptor and transporter densities. We then cross-validated the model using a distance-dependent method that was previously developed in-house (Fig. S3; see *Methods* for details [47]). We found a close fit between receptor densities and MEG-derived power ($0.85 \leq R_{\text{adj}}^2 \leq 0.94$; Fig. 3a), suggesting that overlapping spatial topographies of multiple neurotransmitter systems may ultimately manifest as coherent oscillatory patterns.

To determine which independent variables (receptors/transporters) contribute most to the fit, we applied dominance analysis, a technique that assigns a proportion of the final R_{adj}^2 to each independent variable (Fig. 3b; [7]). Dominance was assessed against spin tests to identify neurotransmitter receptors that contribute to the fit above and beyond the effects of spatial autocorrelation. Notably, we find that the μ -opioid receptor

(MOR) shows high dominance for theta and alpha frequency bands, consistent with previous reports [85, 87, 138, 140, 148]. Interestingly, the ionotropic GABA_A receptor is significantly dominant for frequency bands with fast timescales (alpha, low gamma, high gamma). We additionally note that the only other ionotropic receptor in our dataset (excitatory cholinergic $\alpha_4\beta_2$) also makes a consistently, although non-significantly, high contribution to multiple MEG frequency bands. The prominence of ionotropic receptors is also observed in the autoradiography dataset (see *Replication using autoradiography* and Fig. S4). Collectively, these results suggest that fast-acting ionotropic receptors promote neural oscillatory dynamics.

Mapping receptors to cognitive function

Previously, we showed that receptor distributions follow the structural and functional organization of the brain, and that receptors are closely linked to neural dynamics. In this and the next subsections, we investigate how the spatial distribution of neurotransmitter receptors and transporters correspond to cognitive processes and disease vulnerability.

We used Neurosynth to derive meta-analytic task activation maps, which represent the probability that specific brain regions are activated during multiple cognitive tasks [141]. We selected a subset of 123 cognitive processes at the intersection of Neurosynth and the Cognitive Atlas [47, 88], and parcellated the data into the same 68-region atlas used for receptor maps, resulting in a region \times cognitive process matrix of functional activations. We then applied partial least squares (PLS) analysis to identify a multivariate mapping between neurotransmitter receptors/transporters and functional activation maps (see *Methods* for details and Table S2 for the complete list of 123 cognitive terms; [60, 68]).

PLS analysis extracted a significant latent variable relating receptor densities to functional activation across the brain ($p_{\text{spin}} = 0.04$). The latent variable represents a spatial pattern of receptor distributions (receptor weights) and functional activations (cognitive weights) that together capture 45% of the covariance between the two datasets (Fig. 4a). Projecting the receptor density (functional activation) matrix back onto the receptor (cognitive) weights reflects how well a brain area exhibits the receptor and cognitive weighted pattern, which we refer to as “receptor scores” and “cognitive scores”, respectively (Fig. 4b, c). The receptor and cognitive score patterns reveal a sensory-fugal spatial gradient that reflects classes of laminar differentiation, separating limbic, paralimbic, and insular cortices from visual and somatosensory cortices (Fig. 4d; [70, 84]). We then cross-validated the correlation between receptor and cognitive scores using a distance-dependent method (mean out-of-sample $r = 0.32$) [47]. This result demonstrates a link between receptor distributions and cognitive specializa-

tion that is perhaps mediated by laminar differentiation and synaptic hierarchies.

To identify the receptors and cognitive processes that contribute most to the spatial pattern in Fig. 4b and c, we correlated each variable with the score pattern (Fig. 4e–f; for all stable term loadings, see Fig. S6). This results in a “loading” for each receptor and cognitive process, where positively loaded receptors covary with positively loaded cognitive processes in positively scored brain regions, and vice versa for negative loadings. Interestingly, we find that the cognitive processes with the greatest positive loading are enriched for emotional and affective processes such as “fear”, “emotion”, and “anxiety”. Likewise, the neurotransmitter receptors with the greatest positive loading are broadly mood-related, including MOR (pain management), D₁, and 5-HT_{1A} (mood regulation). On the other hand, cognitive processes with the greatest negative loading are related to sensory processing and interacting with the external environment, including “visual attention”, “spatial attention” and “search”. In other words, we find a patterning of receptor profiles that robustly separates areas involved in extrinsic function, including sensory-motor processing and attention, versus areas involved in affect and interoception. Collectively, these results demonstrate a direct link between cortex-wide molecular receptor distributions and functional specialization.

Mapping receptors to disease vulnerability

Neurotransmitter receptors are implicated in multiple diseases and disorders. Identifying the neurotransmitter receptors that correspond to specific disorders is important for developing new therapeutic drugs. We therefore sought to relate neurotransmitter receptors and transporters to patterns of cortical thinning (a proxy for loss of neurons and synapses [136]) across a range of neurological, developmental, and psychiatric disorders. We used datasets from the ENIGMA consortium for a total of 13 disorders including: 22q11.2 deletion syndrome (22q) [122], attention deficit hyperactivity disorder (ADHD) [51], autism spectrum disorder (ASD) [133], idiopathic generalized epilepsy, right and left temporal lobe epilepsy [139], depression [106], obsessive-compulsive disorder (OCD) [15], schizophrenia [130], bipolar disorder (BD) [49], obesity [80], schizotypy [59], and Parkinson’s disease (PD) [61]. All cortical thinning maps were collected from adult patients, following identical processing protocols, for a total of over 21 000 scanned patients against almost 26 000 controls. We then fit a multiple regression model that predicts each disorder’s cortical thinning pattern from receptor and transporter distributions (Fig. 5), and cross-validated the model using a distance-dependent method (Fig. S5).

Figure 5a shows how receptor distributions map onto cortical thinning patterns across multiple disorders. We find that some disorders are more heavily influenced

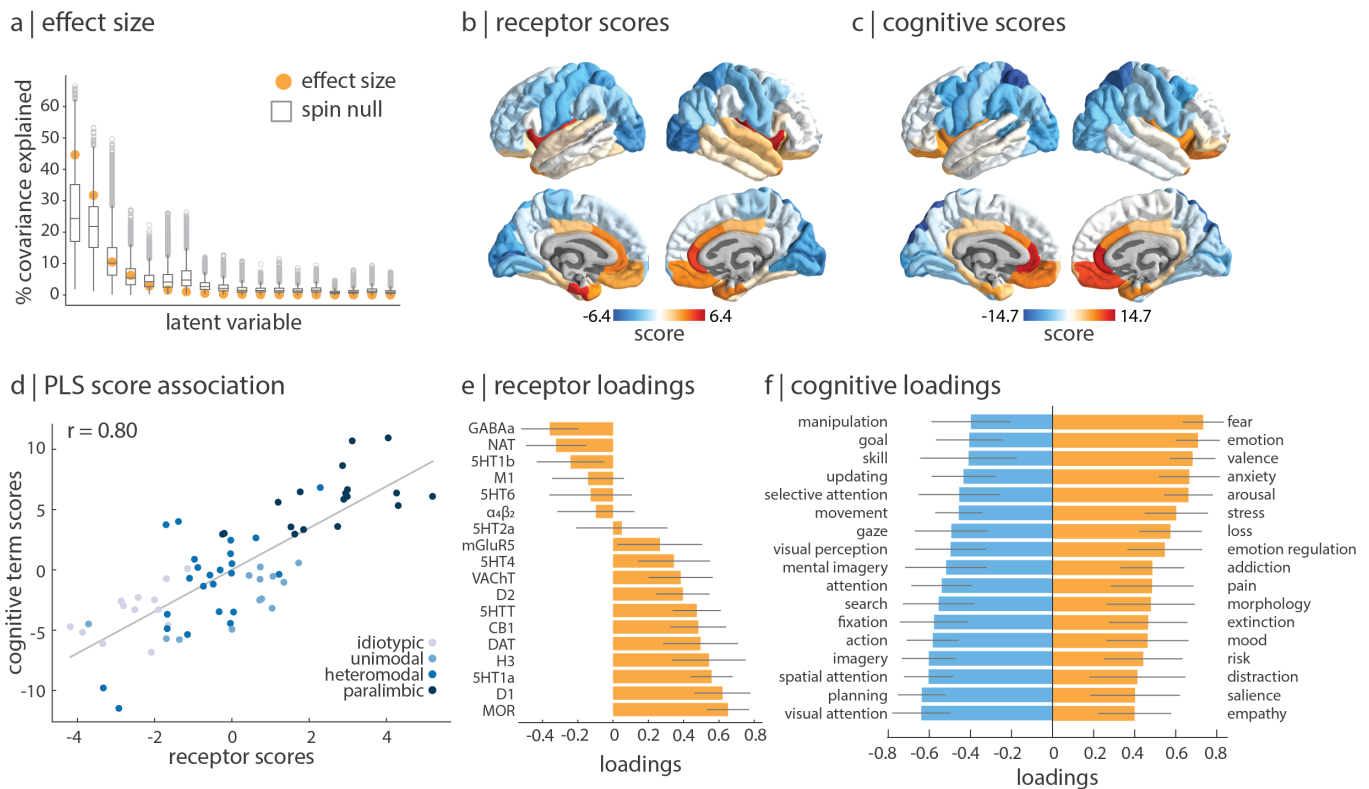


Figure 4. Mapping receptors to cognitive function | (a) Using partial least squares analysis (PLS), we find a significant latent variable that accounts for 45% of the covariation between receptor distributions and Neurosynth-derived cognitive functional activation ($p_{\text{spin}} = 0.04$, 10 000 repetitions). (b)–(c) This latent variable represents a pattern of coactivation between receptors (“receptor scores”) and cognitive terms (“cognitive scores”). (d) Receptor and cognitive scores are designed to correlate highly ($r = 0.80$, out-of-sample mean $r = 0.32$). Points are coloured according to their Mesulam classes of laminar differentiation, revealing a sensory-fugal gradient [70, 84]. (e) Receptor loadings are computed as the correlation between each receptor’s distribution across the cortex and the PLS-derived scores, and can be interpreted as the contribution of each receptor to the latent variable. (f) Similarly, cognitive loadings are computed as the correlation between each term’s functional activation across brain regions and the PLS-derived scores, and can be interpreted as the cognitive processes that contribute most to the latent variable. Here, only the 25% most positively and negatively loaded cognitive processes are shown. For all stable cognitive loadings, see Fig. S6 and for all 123 cognitive processes included in the analysis, see Table S2. 95% confidence intervals are estimated for receptor and cognitive loadings using bootstrap resampling (10 000 repetitions).

by receptor distribution than others ($0.17 < R_{\text{adj}}^2 < 0.75$). Idiopathic generalized epilepsy, OCD, and schizotypy show lower correspondence with receptor distributions, whereas ADHD, autism, and temporal lobe epilepsies show greater correspondence with receptor distributions. Interestingly, we find that serotonin transporter (5-HTT) distributions conform to cortical atrophy of psychiatric mood disorders such as OCD, schizophrenia, and bipolar disorder. Furthermore, MOR receptor distributions map onto cortical thinning patterns of ADHD, consistent with findings from animal models [23, 97]. We also note that in some cases the analyses do not necessarily recover the expected relationships. For instance, in PD, the dopamine receptors are not implicated, likely because the analysis was restricted to cortex only. Our results present an initial step towards a comprehensive “look-up table” that relates neurotransmitter systems to multiple brain disorders.

Replication using autoradiography

In the present report, we comprehensively situate neurotransmitter receptor densities within the brain’s structural and functional architecture. However, estimates for neurotransmitter receptor densities are acquired from PET imaging alone, and the way in which densities are quantified varies across radioligands, image acquisition protocols, and preprocessing. Autoradiography is an alternative technique to measure receptor density, and captures local densities at a defined number of post-mortem brain sections [147]. Due to the high cost and labor intensity of acquiring autoradiographs, there does not yet exist a complete autoradiography 3-D cross-cortex atlas of receptors (but see [38]).

Nonetheless, we repeated the analyses in an autoradiography dataset of 15 neurotransmitter receptors

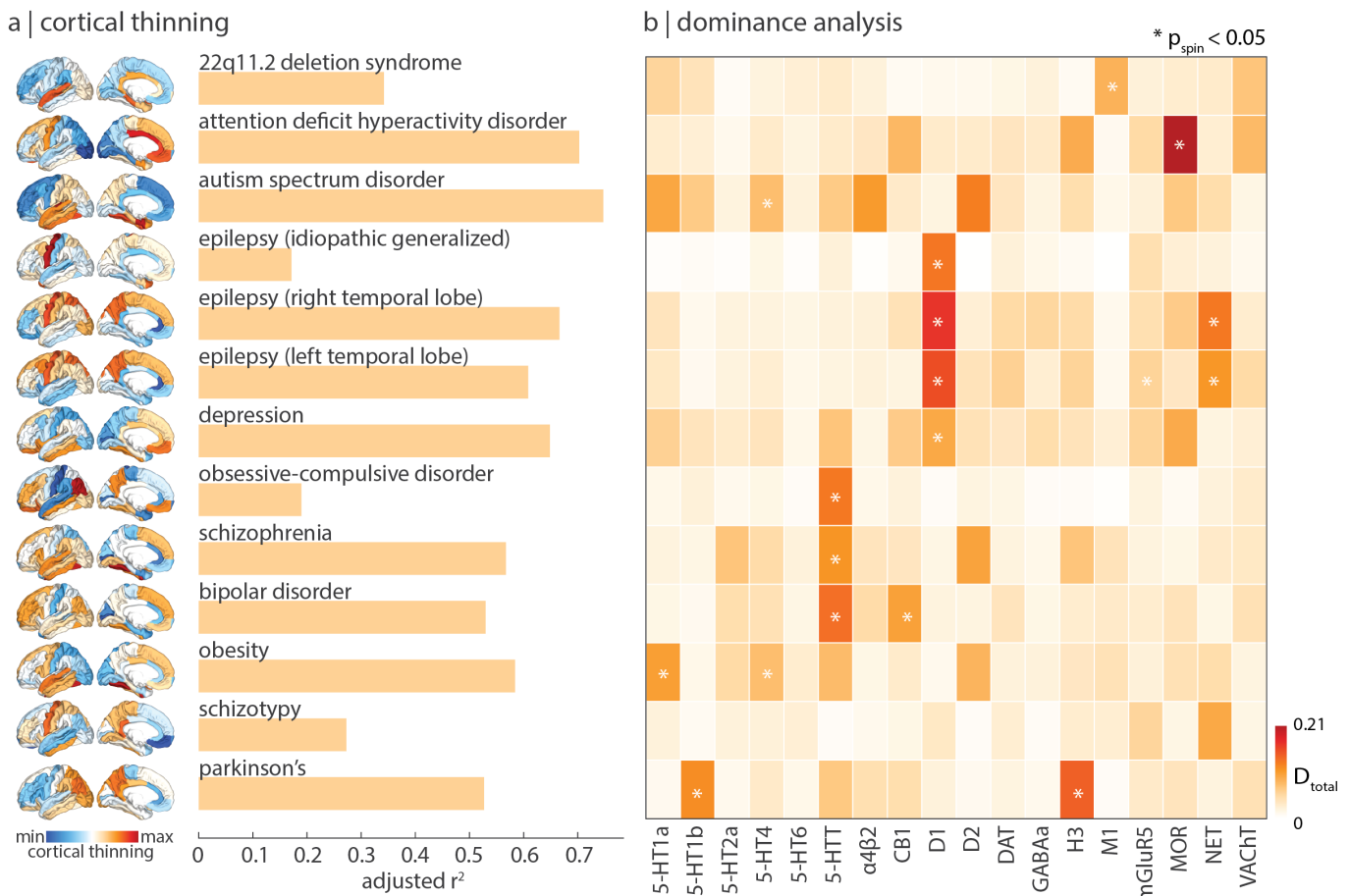


Figure 5. Mapping receptors to disease vulnerability | Using a multilinear model, neurotransmitter receptor/transporter distributions were fit to patterns of cortical thinning for thirteen neurological, psychiatric, and neurodevelopmental disorders, collected by the ENIGMA consortium [63, 125]. (a) Model fit varies: idiopathic generalized epilepsy, OCD, and schizotypy atrophy patterns show smaller fits, and ADHD, autism, and temporal lobe epilepsy atrophy patterns show greater fits. (b) Dominance analysis identified the neurotransmitter receptors and transporters whose spatial distribution most influence model fit, for each disorder separately. Asterisks indicate significant dominance ($p_{\text{spin}} < 0.05$).

across 44 cytoarchitecturally defined cortical areas, from three post-mortem brains [46, 145]. This set of 15 neurotransmitter receptors consists of a diverse set of ionotropic and metabotropic receptors, including excitatory glutamate, acetylcholine, and norepinephrine receptors (see Table S1 for a complete list of receptors and Fig. S7a for mean density of neurotransmitter receptors across the 44 regions). Correlations of receptor density distribution between every pair of receptors is shown in Fig. S7b, and receptor similarity is shown in Fig. S7c. Despite the alternate set of neurotransmitter receptors, we find that autoradiography-derived receptor similarity is significantly correlated with PET-derived receptor similarity ($r = 0.33$, $p = 1.2 \times 10^{-14}$; Fig. S7d). Additionally, we find that autoradiography-derived receptor densities follow similar architectural patterns as the PET-derived receptor densities. Within the autoradiography dataset, receptor similarity decays exponentially with distance and is significantly greater between structurally

connected brain regions ($p = 0.04$), is non-significantly greater in regions within the same intrinsic network ($p_{\text{spin}} = 0.11$), and is significantly correlated with functional connectivity ($r = 0.34$, $p = 9.4 \times 10^{-16}$; Fig. S7e-f). As before, receptor information augments structure-function coupling in dorsolateral prefrontal and temporal regions (Fig. S7g).

Since the autoradiography dataset has a more diverse set of ionotropic and metabotropic receptors, we also asked whether we could replicate the dominance of ionotropic receptors for MEG oscillations. When we fit the fifteen autoradiography neurotransmitter receptors to MEG power, we find that AMPA, NMDA, GABA_A, and $\alpha_4\beta_2$ —all ionotropic receptors—are most dominant, although only AMPA, NMDA, and GABA_A are significant (Fig. S4). This confirms that the fast oscillatory dynamics captured by MEG are closely related to the fluctuations in neural activity modulated by ionotropic neurotransmitter receptors.

Finally, we repeat analyses mapping receptor densities to cognitive functional activation and disease vulnerability. We find a similar topographic gradient linking autoradiography-derived receptor densities to Neurosynth-derived functional activations (Fig. S8a), as well as consistencies regarding the loadings of receptors (Fig. S8b) and cognitive processes (Fig. S8c). Next, when we map autoradiography-derived receptor densities to cortical thinning patterns of multiple disorders, we find prominent associations with receptors that were not included in the PET dataset, including a relationship between the ionotropic glutamate receptor kainate and the epilepsies (Fig. S9; [81]).

Sensitivity and robustness analyses

Finally, to ensure results are not influenced by specific methodological choices, we repeated analyses using different parcellation resolutions, different receptor subsets, and we compared alternative PET tracers to the chosen PET tracers in the present report. Due to the low spatial resolution of PET tracer binding, we opted to present our main results using a coarse resolution of 68 Desikan-Killiany cortical regions. However, when using a parcellation resolution of 114 and 219 cortical regions [18], we find that the mean receptor density and receptor similarity remains consistent (Fig. S10). We next asked whether any single receptor or transporter disproportionately influences receptor similarity. To test this, we iteratively removed a single receptor/transporter from the dataset and recomputed the receptor similarity matrix. These 18 different receptor similarity matrices are all highly correlated with the original similarity matrix ($r > 0.98$), confirming that the correspondence between regional receptor profiles is not driven by a single neurotransmitter receptor/transporter.

Constructing a harmonized set of PET neurotransmitter receptor maps necessitated several methodological decisions. We combined PET maps from different research groups that used the same tracer, except for data from the Neurobiology Research Unit in Copenhagen (including [12] and [78]; see <https://xtra.nru.dk/>) because these images were enhanced using autoradiography data. We combined two P943 (5HT_{1B} [30, 39, 105]), two FLB457 (D₂ [101, 117]), three ABP688 (mGluR₅ [28, 116]), and four FEOBV (VACHT [1, 10]) tracer maps separately, all of which were highly correlated within tracer groups (Fig. S2a). Next, when multiple tracers were available for the same receptor or transporter, we opted for maps constructed from a larger number of participants (Fig. S2b; see *Methods* for details).

Finally, we tested whether participant age affects the reported results. However, only mean age of individuals included in each tracer map was available. Therefore, we fit a linear model between the mean age of scanned participants contributing to each receptor/transporter tracer map and the z-scored receptor/transporter density, for

each brain region separately. We then subtracted the relationship with age from the original receptor densities, resulting in an age-regressed receptor density matrix. We find that both age-regressed receptor density and age-regressed receptor similarity is highly correlated with the original receptor density/similarity ($r = 0.82$ and $r = 0.98$, respectively; Fig. S11), suggesting that age has negligible effect on the reported findings.

DISCUSSION

In the present report, we curate a comprehensive 3-D atlas of 18 neurotransmitter receptors and transporters. We demonstrate that chemoarchitecture is a key layer of the multi-scale organization of the brain. Neurotransmitter receptor profiles closely align with the structural connectivity of the brain and mediate its link with function, including neurophysiological oscillatory dynamics, and resting state hemodynamic functional connectivity. The overlapping topographic distributions of these receptors ultimately manifest as patterns of cognitive specialization and disease vulnerability.

A key question in neuroscience remains how the brain's structural architecture gives rise to its function [6, 121]. The relationship between whole-brain structure and function has been viewed through the lens of "connectomics", in which the brain's structural or functional architectures are represented by regional nodes interconnected by structural and functional links. The key assumption of this model is that nodes are homogeneous, effectively abstracting away important microarchitectural differences between regions. The present work is part of an emerging effort to annotate the connectome with molecular, cellular, and laminar attributes [135]. Indeed, recent work has incorporated microarray gene transcription [17, 47], cell types [4, 108], myelination [24, 25, 53], laminar differentiation [137], and intrinsic dynamics [41, 65, 73, 111] into structural and functional models of the brain.

Neurotransmitter receptors and transporters are an important molecular annotation for bridging brain structure to brain function. Neurotransmitter receptors support signal propagation across electrochemical synapses and tune neural gain [112, 114]. Despite their importance, a comprehensive cortical map of neurotransmitter receptors has remained elusive due to numerous methodological and data sharing challenges. The present study is an ongoing Open Science grassroots effort to assemble harmonized high-resolution normative images of receptors and transporters that can be used to annotate connectomic models of the brain. This work builds on previous initiatives to map receptor densities using autoradiography, which has discovered prominent gradients of receptor expression in both human and macaque brains [36, 46, 145]. Importantly, we find consistent results between autoradiography and PET datasets, which is encouraging because the PET dataset consists of a dif-

ferent group of receptors and transporters, and has the added advantage of providing *in vivo* whole-brain data in large samples of healthy young participants.

We find that structurally connected areas have more similar receptor profiles, suggesting that neurotransmitter receptors are systematically aligned with network structure to regulate inter-regional communication. Indeed, we find a prominent link between receptor distribution and function, including correlated receptor similarity and functional connectivity, as well as greater receptor similarity within intrinsic functional networks. These results support the idea that the emergent functional architecture strongly depends on the underlying chemoarchitecture [113, 144]. Interestingly, we find that the canonical electrophysiological frequency bands can be captured by the overlapping topographies of multiple receptors, consistent with the notion that receptors influence function by tuning gain and synchrony between neuronal populations.

Since receptors modulate the link between structure and function, a natural next question is how receptor distributions relate to psychological processes. We find a prominent spatial gradient of receptor profiles that separates areas involved in extrinsic function, including sensory-motor processing and attention, versus areas involved in affect and interoception. This gradient maps on to the sensory-fugal synaptic hierarchy proposed by Mesulam [36, 69]. The concordance between the two maps is noteworthy because one is derived from the wiring patterns of the brain, while the other is derived from mapping receptors to task-based activations. This suggests that the brain is characterized by universal organizational principles that can be observed at multiple scales of description. Our results bridge the microscale and macroscale to reveal a molecular signature of psychological processes.

Finally, we discover a robust spatial concordance between multiple receptor maps and cortical thinning across a wide range of brain disorders. A key step toward developing therapies for specific syndromes is to reliably map them onto underlying neural systems. This goal is challenging because psychiatric and neurological nosology is built around clinical features, rather than neurobiological mechanisms [54]. Our results complement some previously established associations between disorders and neurotransmitter systems, and also reveal new associations. For instance, we find that the serotonin transporter is consistently implicated in OCD and bipolar disorder, consistent with the fact that selective serotonin reuptake inhibitors (SSRI) are frequently used to treat such disorders. Additionally, we find that serotonin receptors are associated with obesity, consistent with the notion that serotonin systems regulate homeostatic and hedonic circuitry and are therefore implicated in food intake [132]. On the other hand, we find associations that have some preliminary support in the literature, but to our knowledge have not been conclusively established and adopted into clinical practice, includ-

ing histamine H₃ in Parkinson's disease [94, 107], MOR in ADHD [23, 97], and D₁ and NET in temporal lobe epilepsy [20, 42, 120]. Mapping disease phenotypes to receptor profiles will help to identify novel targets for pharmacotherapy [58].

The present work should be considered alongside some important methodological considerations. First, main analyses were conducted using PET images, which detect tracer uptake at a low spatial resolution and without laminar specificity. Although results were replicated using an autoradiography dataset, and in a finer parcellation resolution, a comprehensive atlas of laminar-resolved receptor density measurements is necessary to fully understand how regional variations in receptor densities affect brain structure and function [83]. Second, PET tracer maps were acquired around the world, in different participants, on different scanners, and using specific image acquisition and processing protocols recommended for each individual radioligand. To mitigate this challenge, we normalized the spatial distributions and focused only on analyses related to the relative spatial topographies of receptors as opposed to the absolute values. Third, analyses were conducted in the cortex only, due to data availability and well documented differences in tracer uptake between the cortex and subcortex [32, 127]. Altogether, a 3-D whole-brain comprehensive neurotransmitter receptor density dataset constructed using autoradiographs would be a valuable complement to the present work [38, 83, 145].

In summary, we assemble a normative 3-D atlas of neurotransmitter receptors in the human brain. We systematically map receptors to connectivity, dynamics, cognitive specialization, and disease vulnerability. Our work uncovers a fundamental organizational feature of the brain and provides new direction for a multi-scale systems-level understanding of brain structure and function.

METHODS

All code and data used to perform the analyses can be found at https://github.com/netneurolab/hansen_receptors. Volumetric PET images are included in neuromaps (<https://github.com/netneurolab/neuromaps>) where they can be easily converted between template spaces.

PET data acquisition

Volumetric PET images were collected for 18 different neurotransmitter receptors and transporters from a total of 25 different studies. To protect patient confidentiality, individual participant maps were averaged within studies before being shared. Details of each study, the associated receptor/transporter, tracer, number of healthy participants, age, and reference with full methodological de-

tails can be found in Table 1. A more extensive table can be found in the supplementary material (Table S3) which additionally includes the PET camera, number of males and females, PET modelling method, reference region, scan length, modelling notes, and additional references, if applicable. Note that three tracer maps were shared prior to publication, but contact information is available for the corresponding authors (Table S3). In all cases, only scans from healthy participants were scanned. Images were acquired using best practice imaging protocols recommended for each radioligand. Altogether, the images are an estimate of receptor densities and we therefore refer to the measured value (i.e. binding potential, tracer distribution volume) simply as density. PET images were all registered to the MNI-ICBM 152 nonlinear 2009 (version c, asymmetric) template, then parcellated to a parcellation with 68, 114, and 219 regions according to the Desikan-Killiany atlas [18, 26]. Receptors and transporters with more than one mean image of the same tracer (i.e. 5-HT_{1B}, D₂, mGluR₅, and VACHT) were combined using a weighted average. Finally, each tracer map corresponding to each receptor/transporter was z-scored across regions and concatenated into a final region by receptor matrix of relative densities.

In some cases, more than one tracer map was available for the same neurotransmitter receptor/transporter. We show the comparisons between tracers in Fig. S2b for the following neurotransmitter receptors/transporters: 5-HT_{1A} [12, 105], 5-HT_{1B} [12, 39, 105], 5-HT_{2A} [12, 105, 124], 5-HTT [12, 105], CB₁ [64, 79], D₂ [2, 55, 101, 117], DAT [29, 104], GABA_A [29, 78], MOR [57, 126], and NET [27, 48]. Here we make some specific notes: (1) 5-HTT and GABA_A involve comparisons between the same tracers (DASB and flumazenil, respectively) but one map is autoradiography-informed (see [12] and [78]) and the other is not [29, 30, 105]; (2) raclopride is a popular D₂ tracer but has unreliable binding in the cortex, and is therefore an inappropriate tracer to use for mapping D₂ densities in the cortex, but we show its comparison to FLB457 and another D₂ tracer, fallypride, for completeness [2, 22, 55]; (3) the chosen carfentanil (MOR) map was collated across carfentanil images in the PET Turku Centre database—since our alternative map is a partly overlapping subset of participants, we did not combine the tracers into a single mean map [57, 126].

Autoradiography receptor data acquisition

Receptor autoradiography data were originally acquired as described in [145]. 15 neurotransmitter receptor densities across 44 cytoarchitecturally defined areas were collected in three post-mortem brains (age range: 72–77, 2 males). See Table S1 for a complete list of receptors included in the autoradiography dataset, Supplementary Table 2 in [145] for the originally reported receptor densities, and https://github.com/AlGoulas/receptor_principles

for machine-readable Python *numpy* files of receptor densities [46]. To best compare PET data analyses with the autoradiography dataset, a region-to-region mapping was manually created between the 44 available cortical areas in the autoradiography dataset and the 34 left hemisphere cortical Desikan Killiany regions. In only one case (the insula) was there no suitable mapping between the autoradiography data and the Desikan Killiany atlas. As such, the 44-region autoradiography atlas was converted to 33 Desikan Killiany left hemisphere regions (all but the insula). Finally, receptor densities were z-scored and averaged across supragranular, granular, and infragranular layers, to create a single map of receptor densities across the cortex.

Structural and functional data acquisition

Structural and functional data were collected at the Department of Radiology, University Hospital Center and University of Lausanne, on $n = 70$ healthy young adults (16 females, 25.3 ± 4.9 years). Informed consent was obtained from all participants and the protocol was approved by the Ethics Committee of Clinical Research of the Faculty of Biology and Medicine, University of Lausanne. The scans were performed in a 3-T MRI scanner (Trio; Siemens Medical), using a 32-channel head coil. The protocol included (1) a magnetization-prepared rapid acquisition gradient echo (MPRAGE) sequence sensitive to white/grey matter contrast (1 mm in-plane resolution, 1.2 mm slice thickness), (2) a DSI sequence (128 diffusion-weighted volumes and a single b₀ volume, maximum b-value 8000s/mm², $2.2 \times 2.2 \times 3.0$ mm voxel size), and (3) a gradient echo-planar imaging (EPI) sequence sensitive to blood-oxygen-level-dependent (BOLD) contrast (3.3 mm in-plane resolution and slice thickness with a 0.3 mm gap, TR 1920 ms, resulting in 280 images per participant). Participants were not subject to any overt task demands during the fMRI scan. The Lausanne dataset is available at <https://zenodo.org/record/2872624#.XOJqE99fhmM>.

Structural network reconstruction

Grey matter was parcellated according to the 68-region Desikan-Killiany cortical atlas [26]. Structural connectivity was estimated for individual participants using deterministic streamline tractography. The procedure was implemented in the Connectome Mapping Toolkit [21], initiating 32 streamline propagations per diffusion direction for each white matter voxel. A group-consensus network was constructed using a method that preserves the density and edge-length distributions of the individual connectomes [14, 71, 72]. The binary density for the final 68-region structural connectome was 24.6%.

Functional network reconstruction

Functional MRI data were preprocessed using procedures designed to facilitate subsequent network exploration [89]. fMRI volumes were corrected for physiological variables, including regression of white matter, cerebrospinal fluid, and motion (3 translations and 3 rotations, estimated by rigid body coregistration). BOLD time series were then subjected to a low-pass filter (temporal Gaussian filter with full width at half maximum equal to 1.92 s). The first four time points were excluded from subsequent analysis to allow the time series to stabilize. Motion “scrubbing” was performed as described by [89]. The data were parcellated according to the same 68-region Desikan-Killiany atlas used for the structural network. Individual functional connectivity matrices were defined as zero-lag Pearson correlation among the fMRI BOLD time series. A group-consensus functional connectivity matrix was estimated as the mean connectivity of pairwise connections across individuals. Note that one individual did not undergo an fMRI scan and therefore the functional connectome was composed of $n = 69$ participants.

Structure-function coupling

Structure-function coupling was computed as per [134]. At each brain region, a multilinear model was fit between three measures of the binary structural connectome and functional connectivity. These structural measures were the Euclidean distance, shortest path length, and communicability between the region of interest and every other region. In the receptor-informed model, receptor similarity between the region of interest and every other region was included as an additional independent variable. Path length was computed using the Python package *bctpy* and is defined as the shortest contiguous set of edges between two brain regions, which represents a form of routing communication [96]. Communicability is defined as the weighted average of all walks and paths between two brain regions, and represents diffusive communication [33]. Coupling was defined as the adjusted R^2 of the model.

MEG power

6-minute resting state eyes-open magnetoencephalography (MEG) time-series were acquired from the Human Connectome Project (HCP, S1200 release) for 33 unrelated participants (age range 22–35, 17 males) [43, 131]. Complete MEG acquisition protocols can be found in the HCP S1200 Release Manual. For each participant, we computed the power spectrum at the vertex level across six different frequency bands: delta (2–4 Hz), theta (5–7 Hz), alpha (8–12 Hz), beta (15–29 Hz), low gamma (30–59 Hz), and high

gamma (60–90 Hz), using the open-source software, Brainstorm [123]. The preprocessing was performed by applying notch filters at 60, 120, 180, 240, and 300 Hz, and was followed by a high-pass filter at 0.3 Hz to remove slow-wave and DC-offset artifacts. Preprocessed sensor-level data was used to obtain a source estimation on HCP’s fsLR4k cortex surface for each participant. Head models were computed using overlapping spheres and the data and noise covariance matrices were estimated from the resting state MEG and noise recordings. Brainstorm’s linearly constrained minimum variance (LCMV) beamformers method was applied to obtain the source activity for each participant. Welch’s method was then applied to estimate power spectrum density (PSD) for the source-level data, using overlapping windows of length 4 seconds with 50% overlap. Average power at each frequency band was then calculated for each vertex (i.e. source). Source-level power data was then parcellated into 68, 114, and 219 cortical regions for each frequency band [18].

ENIGMA cortical thinning maps

The ENIGMA (Enhancing Neuroimaging Genetics through Meta-Analysis) Consortium is a data-sharing initiative that relies on standardized image acquisition and processing pipelines, such that disorder maps are comparable [125]. Patterns of cortical thinning were collected for thirteen neurological, neurodevelopmental, and psychiatric disorders from the ENIGMA consortium and the Enigma toolbox (<https://github.com/MICA-MNI/ENIGMA>; [62]) including: 22q11.2 deletion syndrome (22q) [122], attention deficit hyperactivity disorder (ADHD) [51], autism spectrum disorder (ASD) [133], idiopathic generalized epilepsy [139], right temporal lobe epilepsy [139], left temporal lobe epilepsy [139], depression [106], obsessive-compulsive disorder (OCD) [15], schizophrenia [130], bipolar disorder (BD) [49], obesity [80], schizotypy [59], and Parkinson’s disease (PD) [61]. Altogether, over 21 000 patients were scanned across the thirteen disorders, against almost 26 000 controls. The values for each map are z-scored effect sizes (Cohen’s d) of cortical thickness in patient populations versus healthy controls. For visualization purposes, data are inverted such that larger values represent greater cortical thinning. Imaging and processing protocols can be found at <http://enigma.ini.usc.edu/protocols/>.

Dominance analysis

Dominance analysis seeks to determine the relative contribution (“dominance”) of each independent variable to the overall fit (adjusted R^2) of the multiple linear regression model (<https://github.com/dominance-analysis/dominance-analysis> [7, 16]). This

is done by fitting the same regression model on every combination of input variables ($2^p - 1$ submodels for a model with p input variables). Total dominance is defined as the average of the relative increase in R^2 when adding a single input variable of interest to a submodel, across all $2^p - 1$ submodels. The sum of the dominance of all input variables is equal to the total adjusted R^2 of the complete model, making total dominance an intuitive measure of contribution. Significant dominance was assessed using the spin test (see *Null models*), whereby dominance analysis was repeated between a spun dependent variable and the original independent variables (1 000 repetitions).

Distance-dependent cross-validation

The robustness of each multilinear model was assessed by cross-validating the model by using a distance-dependent method [47]. For each brain region, we select the 75% closest regions as the training set, and the remaining 25% of brain regions as the test set. This stratification procedure minimizes the dependence among the two sets due to spatial autocorrelation. The model was fit on the training set, and the predicted test-set output variable (either MEG power or cortical thinning) was correlated to the empirical test set values. The distribution of Pearson's correlations between predicted and empirical power/cortical thinning across all repetitions (i.e. all brain regions) can be found in Fig. S3 and Fig. S5.

Cognitive meta-analytic activation

Probabilistic measures of the association between voxels and cognitive processes were obtained from Neurosynth, a meta-analytic tool that synthesizes results from more than 15 000 published fMRI studies by searching for high-frequency key words (such as “pain” and “attention”) that are published alongside fMRI voxel coordinates (<https://github.com/neurosynth/neurosynth>, using the volumetric association test maps [141]). This measure of association is the probability that a given cognitive process is reported in the study if there is activation observed at a given voxel. Although more than a thousand cognitive processes are reported in Neurosynth, we focus primarily on cognitive function and therefore limit the terms of interest to cognitive and behavioural terms. These terms were selected from the Cognitive Atlas, a public ontology of cognitive science [88], which includes a comprehensive list of neurocognitive processes and has been previously used in conjunction with Neurosynth [3]. We used 123 terms, ranging from umbrella terms (“attention”, “emotion”) to specific cognitive processes (“visual attention”, “episodic memory”), behaviours (“eating”, “sleep”), and emotional states (“fear”, “anxiety”). The coordinates reported by Neurosynth were parcellated according to the 68-node

Desikan Killiany atlas. The probabilistic measure reported by Neurosynth can be interpreted as a quantitative representation of how regional fluctuations in activity are related to psychological processes. The full list of cognitive processes is shown in Table S2.

Partial least squares analysis

Partial least squares analysis (PLS) was used to relate neurotransmitter receptor distributions to functional activation. PLS is an unsupervised multivariate statistical technique that decomposes the two datasets into orthogonal sets of latent variables with maximum covariance. The latent variables consist of receptor weights, cognitive weights, and a singular value which represents the covariance between receptor distributions and functional activations that is explained by the latent variable. Receptor and cognitive scores are computed by projecting the original data onto the respective weights, such that each brain region is assigned a receptor and cognitive score. Finally, receptor loadings are computed as the Pearson's correlation between receptor densities and receptor scores, and vice versa for cognitive loadings.

The significance of the latent variable was assessed on the singular value, against the spin-test (see *Null models*). In the present report, only the first latent variable was significant; remaining latent variables were not analyzed further. Finally, the correlation between receptor and cognitive scores was cross-validated (see *Distance-dependent cross-validation*). After fitting PLS on the training set and correlating the ensuing receptor and cognitive scores, the test set was projected onto the training set-derived weights and the test set scores were correlated. The empirical correlation between receptor and cognitive scores across all brain regions was $r = 0.80$, the mean training set correlation was 0.86, and the mean test set correlation was 0.32.

Null models

Spatial autocorrelation-preserving permutation tests were used to assess statistical significance of associations across brain regions, termed “spin tests” [3, 66]. We created a surface-based representation of the parcellation on the FreeSurfer fsaverage surface, via files from the Connectome Mapper toolkit (<https://github.com/LTS5/cmp>). We used the spherical projection of the fsaverage surface to define spatial coordinates for each parcel by selecting the coordinates of the vertex closest to the center of the mass of each parcel [134]. These parcel coordinates were then randomly rotated, and original parcels were reassigned the value of the closest rotated parcel (10 000 repetitions). Parcels for which the medial wall was closest were assigned the value of the next most proximal parcel instead. The procedure was performed at the parcel resolution rather than the vertex resolution

to avoid upsampling the data, and to each hemisphere separately.

A second null model was used to test whether receptor similarity is greater in connected regions than unconnected regions. This model generates a null structural connectome that preserves the density, edge length, and degree distributions of the empirical structural connectome [13, 44, 95]. Briefly, edges were binned according to Euclidean distance. Within each bin, pairs of edges were selected at random and swapped. This procedure was then repeated 10 000 times. To compute a p -value, the mean receptor similarity of unconnected edges was subtracted from the mean receptor similarity of connected edges, and this difference was compared to a null distribution of differences computed on the rewired networks.

Acknowledgments

We thank Vincent Bazinet, Zhen-Qi Liu, Filip Milisav, Laura Suarez, Bertha Vazquez-Rodriguez, and Mingze Li for their comments and suggestions on the manuscript. This research was undertaken thanks in part to funding from the Canada First Research Excellence Fund, awarded to McGill University for the Healthy Brains for Healthy Lives initiative. BM acknowledges support from the Natural Sciences and Engineering Research Council of Canada (NSERC Discovery Grant RGPIN #017-04265) and from the Canada Research Chairs Program. JYH acknowledges support from the Helmholtz International BigBrain Analytics & Learning Laboratory, the Natural Sciences and Engineering Research Council of Canada, and the Fonds de recherches de Québec. The funders had no role in study design, data collection and analysis, decision to publish or preparation of the manuscript.

-
- [1] Aghourian, M., Legault-Denis, C., Soucy, J., Rosa-Neto, P., Gauthier, S., Kostikov, A., Gravel, P., and Bedard, M. (2017). Quantification of brain cholinergic denervation in alzheimer's disease using pet imaging with [18 f]-feobv. *Molecular psychiatry*, 22(11):1531–1538.
 - [2] Alakurtti, K., Johansson, J. J., Joutsa, J., Laine, M., Bäckman, L., Nyberg, L., and Rinne, J. O. (2015). Long-term test–retest reliability of striatal and extrastriatal dopamine d2/3 receptor binding: study with [11c] raclopride and high-resolution pet. *Journal of Cerebral Blood Flow & Metabolism*, 35(7):1199–1205.
 - [3] Alexander-Bloch, A. F., Shou, H., Liu, S., Satterthwaite, T. D., Glahn, D. C., Shinohara, R. T., Vandekar, S. N., and Raznahan, A. (2018). On testing for spatial correspondence between maps of human brain structure and function. *NeuroImage*, 178:540–551.
 - [4] Anderson, K. M., Collins, M. A., Chin, R., Ge, T., Rosenberg, M. D., and Holmes, A. J. (2020). Transcriptional and imaging-genetic association of cortical interneurons, brain function, and schizophrenia risk. *Nature communications*, 11(1):1–15.
 - [5] Arnatkeviciute, A., Fulcher, B., Bellgrove, M., and Fornito, A. (2021). Where the genome meets the connectome: understanding how genes shape human connectivity. *Neuroimage*.
 - [6] Avena-Koenigsberger, A., Misić, B., and Sporns, O. (2018). Communication dynamics in complex brain networks. *Nature Reviews Neuroscience*, 19(1):17–33.
 - [7] Azen, R. and Budescu, D. V. (2003). The dominance analysis approach for comparing predictors in multiple regression. *Psychological methods*, 8(2):129.
 - [8] Baldassarri, S. R., Hillmer, A. T., Anderson, J. M., Jatlow, P., Nabulsi, N., Labaree, D., Cosgrove, K. P., O'Malley, S. S., Eissenberg, T., Krishnan-Sarin, S., et al. (2018). Use of electronic cigarettes leads to significant beta2-nicotinic acetylcholine receptor occupancy: evidence from a pet imaging study. *Nicotine and Tobacco Research*, 20(4):425–433.
 - [9] Baldassarri, S. R., Park, E., Finnema, S. J., Planeta, B., Nabulsi, N., Najafzadeh, S., Ropchan, J., Huang, Y., Hannestad, J., Maloney, K., et al. (2020). Inverse changes in raphe and cortical 5-ht1b receptor availability after acute tryptophan depletion in healthy human subjects. *Synapse*, 74(10):e22159.
 - [10] Bedard, M.-A., Aghourian, M., Legault-Denis, C., Postuma, R. B., Soucy, J.-P., Gagnon, J.-F., Pelletier, A., and Montplaisir, J. (2019). Brain cholinergic alterations in idiopathic rem sleep behaviour disorder: a pet imaging study with 18f-feobv. *Sleep medicine*, 58:35–41.
 - [11] Belfort-DeAguiar, R., Gallezot, J.-D., Hwang, J. J., Elshafie, A., Yeckel, C. W., Chan, O., Carson, R. E., Ding, Y.-S., and Sherwin, R. S. (2018). Noradrenergic activity in the human brain: a mechanism supporting the defense against hypoglycemia. *The Journal of Clinical Endocrinology & Metabolism*, 103(6):2244–2252.
 - [12] Beliveau, V., Ganz, M., Feng, L., Ozenne, B., Højgaard, L., Fisher, P. M., Svarer, C., Greve, D. N., and Knudsen, G. M. (2017). A high-resolution in vivo atlas of the human brain's serotonin system. *Journal of Neuroscience*, 37(1):120–128.
 - [13] Betzel, R. F. and Bassett, D. S. (2018). Specificity and robustness of long-distance connections in weighted, interareal connectomes. *Proceedings of the National Academy of Sciences*, 115(21):E4880–E4889.
 - [14] Betzel, R. F., Griffa, A., Hagmann, P., and Mišić, B. (2019). Distance-dependent consensus thresholds for generating group-representative structural brain networks. *Network neuroscience*, 3(2):475–496.
 - [15] Boedhoe, P. S., Schmaal, L., Abe, Y., Alonso, P., Ameis, S. H., Anticevic, A., Arnold, P. D., Batistuzzo, M. C., Benedetti, F., Beucke, J. C., et al. (2018). Cortical abnormalities associated with pediatric and adult obsessive-compulsive disorder: findings from the enigma obsessive-compulsive disorder working group. *American Journal of Psychiatry*, 175(5):453–462.
 - [16] Budescu, D. V. (1993). Dominance analysis: a new approach to the problem of relative importance of predictors in multiple regression. *Psychological bulletin*, 114(3):542.

- [17] Burt, J. B., Demirtaş, M., Eckner, W. J., Navejar, N. M., Ji, J. L., Martin, W. J., Bernacchia, A., Anticevic, A., and Murray, J. D. (2018). Hierarchy of transcriptomic specialization across human cortex captured by structural neuroimaging topography. *Nature neuroscience*, 21(9):1251–1259.
- [18] Cammoun, L., Gigandet, X., Meskaldji, D., Thiran, J. P., Sporns, O., Do, K. Q., Maeder, P., Meuli, R., and Hagmann, P. (2012). Mapping the human connectome at multiple scales with diffusion spectrum mri. *J Neurosci Meth*, 203(2):386–397.
- [19] Chiang-shan, R. L., Potenza, M. N., Lee, D. E., Planeta, B., Gallezot, J.-D., Labaree, D., Henry, S., Nabulsi, N., Sinha, R., Ding, Y.-S., et al. (2014). Decreased norepinephrine transporter availability in obesity: positron emission tomography imaging with (s, s)-[11c] o-methylreboxetine. *Neuroimage*, 86:306–310.
- [20] Costa, C., Parnetti, L., D’Amelio, M., Tozzi, A., Tantucci, M., Romigi, A., Siliquini, S., Cavallucci, V., Di Filippo, M., Mazzocchetti, P., et al. (2016). Epilepsy, amyloid- β , and d1 dopamine receptors: a possible pathogenetic link? *Neurobiology of aging*, 48:161–171.
- [21] Daducci, A., Gerhard, S., Griffa, A., Lemkaddem, A., Cammoun, L., Gigandet, X., Meuli, R., Hagmann, P., and Thiran, J.-P. (2012). The connectome mapper: an open-source processing pipeline to map connectomes with mri. *PloS one*, 7(12):e48121.
- [22] Dagher, A. and Palomero-Gallagher, N. (2020). Mapping dopamine with positron emission tomography: A note of caution. *Neuroimage*.
- [23] DasBanerjee, T., Middleton, F. A., Berger, D. F., Lombardo, J. P., Sagvolden, T., and Faraone, S. V. (2008). A comparison of molecular alterations in environmental and genetic rat models of adhd: a pilot study. *American Journal of Medical Genetics Part B: Neuropsychiatric Genetics*, 147(8):1554–1563.
- [24] Deco, G., Vidaurre, D., and Kringelbach, M. L. (2021). Revisiting the global workspace orchestrating the hierarchical organization of the human brain. *Nature human behaviour*, 5(4):497–511.
- [25] Demirtaş, M., Burt, J. B., Helmer, M., Ji, J. L., Adkinson, B. D., Glasser, M. F., Van Essen, D. C., Sotiropoulos, S. N., Anticevic, A., and Murray, J. D. (2019). Hierarchical heterogeneity across human cortex shapes large-scale neural dynamics. *Neuron*, 101(6):1181–1194.
- [26] Desikan, R. S., Ségonne, F., Fischl, B., Quinn, B. T., Dickerson, B. C., Blacker, D., Buckner, R. L., Dale, A. M., Maguire, R. P., Hyman, B. T., et al. (2006). An automated labeling system for subdividing the human cerebral cortex on mri scans into gyral based regions of interest. *NeuroImage*, 31(3):968–980.
- [27] Ding, Y.-S., Singhal, T., Planeta-Wilson, B., Gallezot, J.-D., Nabulsi, N., Labaree, D., Ropchan, J., Henry, S., Williams, W., Carson, R. E., et al. (2010). Pet imaging of the effects of age and cocaine on the norepinephrine transporter in the human brain using (s, s)-[11c] o-methylreboxetine and hrrt. *Synapse*, 64(1):30–38.
- [28] DuBois, J. M., Rousset, O. G., Rowley, J., Porras-Betancourt, M., Reader, A. J., Labbe, A., Massarweh, G., Soucy, J.-P., Rosa-Neto, P., and Kobayashi, E. (2016). Characterization of age/sex and the regional distribution of mglur5 availability in the healthy human brain measured by high-resolution [11 c] abp688 pet. *European journal of nuclear medicine and molecular imaging*, 43(1):152–162.
- [29] Dukart, J., Holiga, Š., Chatham, C., Hawkins, P., Forsyth, A., McMillan, R., Myers, J., Lingford-Hughes, A. R., Nutt, D. J., Merlo-Pich, E., et al. (2018). Cerebral blood flow predicts differential neurotransmitter activity. *Scientific reports*, 8(1):1–11.
- [30] Dukart, J., Holiga, S., Rullmann, M., Lanzenberger, R., Hawkins, P. C., Mehta, M. A., Hesse, S., Barthel, H., Sabri, O., Jech, R., et al. (2021). Juspace: A tool for spatial correlation analyses of magnetic resonance imaging data with nuclear imaging derived neurotransmitter maps. Technical report, Wiley Online Library.
- [31] D’Souza, D. C., Cortes-Briones, J. A., Ranganathan, M., Thurnauer, H., Creatura, G., Surti, T., Planeta, B., Neumeister, A., Pittman, B., Normandin, M. D., et al. (2016). Rapid changes in cannabinoid 1 receptor availability in cannabis-dependent male subjects after abstinence from cannabis. *Biological psychiatry: cognitive neuroscience and neuroimaging*, 1(1):60–67.
- [32] Elsinga, P. H., Hatano, K., and Ishiwata, K. (2006). Pet tracers for imaging of the dopaminergic system. *Current medicinal chemistry*, 13(18):2139–2153.
- [33] Estrada, E. and Hatano, N. (2008). Communicability in complex networks. *Physical Review E*, 77(3):036111.
- [34] Evans, A. C. (2013). Networks of anatomical covariance. *Neuroimage*, 80:489–504.
- [35] Fornito, A., Arnatkevičiūtė, A., and Fulcher, B. D. (2019). Bridging the gap between connectome and transcriptome. *Trends in Cognitive Sciences*, 23(1):34–50.
- [36] Froudust-Walsh, S., Xu, T., Niu, M., Rapan, L., Zilles, K., Margulies, D. S., Wang, X.-J., and Palomero-Gallagher, N. (2021). Gradients of receptor expression in the macaque cortex. *bioRxiv*.
- [37] Fulcher, B. D. and Fornito, A. (2016). A transcriptional signature of hub connectivity in the mouse connectome. *Proc Natl Acad Sci USA*, 113(5):1435–1440.
- [38] Funck, T., Wagstyl, K., Omidyeganeh, M., Lepage, C., Toussaint, P., Zilles, K., Thiel, A., Evans, A., and Palomero-Gallagher, N. (2021). 3d reconstruction of 20 neurotransmitter receptor atlases from 2d autoradiographs. *27th Annual Meeting of the Organization for Human Brain Mapping*.
- [39] Gallezot, J.-D., Nabulsi, N., Neumeister, A., Planeta-Wilson, B., Williams, W. A., Singhal, T., Kim, S., Maguire, R. P., McCarthy, T., Frost, J. J., et al. (2010). Kinetic modeling of the serotonin 5-ht1b receptor radioligand [11c] p943 in humans. *Journal of Cerebral Blood Flow & Metabolism*, 30(1):196–210.
- [40] Gallezot, J.-D., Planeta, B., Nabulsi, N., Palumbo, D., Li, X., Liu, J., Rowinski, C., Chidsey, K., Labaree, D., Ropchan, J., et al. (2017). Determination of receptor occupancy in the presence of mass dose:[11c] gsk189254 pet imaging of histamine h3 receptor occupancy by pf-03654746. *Journal of Cerebral Blood Flow & Metabolism*, 37(3):1095–1107.
- [41] Gao, R., van den Brink, R. L., Pfeffer, T., and Voytek, B. (2020). Neuronal timescales are functionally dynamic and shaped by cortical microarchitecture. *Elife*, 9:e61277.
- [42] Giorgi, F. S., Pizzanelli, C., Biagioni, F., Murri, L., and Fornai, F. (2004). The role of norepinephrine in epilepsy: from the bench to the bedside. *Neuroscience & Biobehavioral Reviews*, 28(5):507–524.

- [43] Glasser, M. F., Sotiropoulos, S. N., Wilson, J. A., Coalson, T. S., Fischl, B., Andersson, J. L., Xu, J., Jbabdi, S., Webster, M., Polimeni, J. R., et al. (2013). The minimal preprocessing pipelines for the human connectome project. *Neuroimage*, 80:105–124.
- [44] Gollo, L. L., Roberts, J. A., Cropley, V. L., Di Biase, M. A., Pantelis, C., Zalesky, A., and Breakspear, M. (2018). Fragility and volatility of structural hubs in the human connectome. *Nature neuroscience*, 21(8):1107–1116.
- [45] Goulas, A., Betzel, R. F., and Hilgetag, C. C. (2019). Spatiotemporal ontogeny of brain wiring. *Science advances*, 5(6):eaav9694.
- [46] Goulas, A., Changeux, J.-P., Wagstyl, K., Amunts, K., Palomero-Gallagher, N., and Hilgetag, C. C. (2021). The natural axis of transmitter receptor distribution in the human cerebral cortex. *Proceedings of the National Academy of Sciences*, 118(3).
- [47] Hansen, J. Y., Markello, R. D., Vogel, J. W., Seidlitz, J., Bzdok, D., and Misić, B. (2021). Mapping gene transcription and neurocognition across human neocortex. *Nature Human Behaviour*, pages 1–11.
- [48] Hesse, S., Becker, G.-A., Rullmann, M., Bresch, A., Luthardt, J., Hankir, M. K., Zientek, F., Reißig, G., Patt, M., Arelin, K., et al. (2017). Central noradrenaline transporter availability in highly obese, non-depressed individuals. *European journal of nuclear medicine and molecular imaging*, 44(6):1056–1064.
- [49] Hibar, D., Westlye, L. T., Doan, N. T., Jahanshad, N., Cheung, J., Ching, C. R., Versace, A., Bilderbeck, A., Uhlmann, A., Mwangi, B., et al. (2018). Cortical abnormalities in bipolar disorder: an mri analysis of 6503 individuals from the enigma bipolar disorder working group. *Molecular psychiatry*, 23(4):932–942.
- [50] Hillmer, A. T., Esterlis, I., Gallezot, J.-D., Bois, F., Zheng, M.-Q., Nabulsi, N., Lin, S.-F., Papke, R., Huang, Y., Sabri, O., et al. (2016). Imaging of cerebral $\alpha 4\beta 2^*$ nicotinic acetylcholine receptors with (-)-[18f] flubatine pet: Implementation of bolus plus constant infusion and sensitivity to acetylcholine in human brain. *Neuroimage*, 141:71–80.
- [51] Hoogman, M., Muetzel, R., Guimaraes, J. P., Shumskaya, E., Mennes, M., Zwiers, M. P., Jahanshad, N., Sudre, G., Wolfers, T., Earl, E. A., et al. (2019). Brain imaging of the cortex in adhd: a coordinated analysis of large-scale clinical and population-based samples. *American Journal of Psychiatry*, 176(7):531–542.
- [52] Horvát, S., Gămănuț, R., Ercsey-Ravasz, M., Magrou, L., Gămănuț, B., Van Essen, D. C., Burkhalter, A., Knoblauch, K., Toroczka, Z., and Kennedy, H. (2016). Spatial embedding and wiring cost constrain the functional layout of the cortical network of rodents and primates. *PLoS biology*, 14(7):e1002512.
- [53] Huntenburg, J. M., Bazin, P.-L., Goulas, A., Tardif, C. L., Villringer, A., and Margulies, D. S. (2017). A systematic relationship between functional connectivity and intracortical myelin in the human cerebral cortex. *Cerebral Cortex*, 27(2):981–997.
- [54] Insel, T., Cuthbert, B., Garvey, M., Heinssen, R., Pine, D. S., Quinn, K., Sanislow, C., and Wang, P. (2010). Research domain criteria (rdoc): toward a new classification framework for research on mental disorders. *American Psychiatric Association*.
- [55] Jaworska, N., Cox, S. M., Tippler, M., Castellanos-Ryan, N., Benkelfat, C., Parent, S., Dagher, A., Vitaro, F., Boivin, M., Pihl, R. O., et al. (2020). Extra-striatal d 2/3 receptor availability in youth at risk for addiction. *Neuropsychopharmacology*, 45(9):1498–1505.
- [56] Kaller, S., Rullmann, M., Patt, M., Becker, G.-A., Luthardt, J., Girbardt, J., Meyer, P. M., Werner, P., Barthel, H., Bresch, A., et al. (2017). Test–retest measurements of dopamine d 1-type receptors using simultaneous pet/mri imaging. *European journal of nuclear medicine and molecular imaging*, 44(6):1025–1032.
- [57] Kantonen, T., Karjalainen, T., Isojärvi, J., Nuutila, P., Tuisku, J., Rinne, J., Hietala, J., Kaasinen, V., Kalliokoski, K., Scheinin, H., et al. (2020). Interindividual variability and lateralization of μ -opioid receptors in the human brain. *NeuroImage*, 217:116922.
- [58] Khan, A. F., Adewale, Q., Baumeister, T. R., Carbonell, F., Zilles, K., Palomero-Gallagher, N., Iturria-Medina, Y., and the Alzheimer’s Disease Neuroimaging Initiative (2021). Personalized brain models identify neurotransmitter receptor changes in alzheimer’s disease. *Brain*.
- [59] Kirschner, M., Hodzic-Santor, B., Kircher, T., Krug, A., Meller, T., Grotegerd, D., Fornito, A., Arnatkeviciute, A., Bellgrove, M., Tiego, J., et al. (2021). Cortical and subcortical neuroanatomical signatures of schizotypy in 3,004 individuals assessed in a worldwide enigma study. *medRxiv*.
- [60] Krishnan, A., Williams, L. J., McIntosh, A. R., and Abdi, H. (2011). Partial least squares (pls) methods for neuroimaging: a tutorial and review. *NeuroImage*, 56(2):455–475.
- [61] Laansma, M. A., Bright, J. K., Al-Bachari, S., Anderson, T. J., Ard, T., Assogna, F., Baquero, K. A., Berendse, H. W., Blair, J., Cendes, F., et al. (2021). International multicenter analysis of brain structure across clinical stages of parkinson’s disease. *Movement Disorders*.
- [62] Larivière, S., Paquola, C., Park, B.-y., Royer, J., Wang, Y., Benkarim, O., de Wael, R. V., Valk, S. L., Thomopoulos, S. I., Kirschner, M., et al. (2020). The enigma toolbox: Cross-disorder integration and multiscale neural contextualization of multisite neuroimaging datasets. *bioRxiv*.
- [63] Larivière, S., Paquola, C., Park, B.-y., Royer, J., Wang, Y., Benkarim, O., Vos de Wael, R., Valk, S. L., Thomopoulos, S. I., Kirschner, M., et al. (2021). The enigma toolbox: multiscale neural contextualization of multisite neuroimaging datasets. *Nature Methods*, 18(7):698–700.
- [64] Laurikainen, H., Tuominen, L., Tikka, M., Merisaari, H., Armio, R.-L., Sormunen, E., Borgan, F., Veronese, M., Howes, O., Haaparanta-Solin, M., et al. (2019). Sex difference in brain cb1 receptor availability in man. *Neuroimage*, 184:834–842.
- [65] Mahjoory, K., Schoffelen, J.-M., Keitel, A., and Gross, J. (2020). The frequency gradient of human resting-state brain oscillations follows cortical hierarchies. *Elife*, 9:e53715.
- [66] Markello, R. D. and Misić, B. (2021). Comparing spatial null models for brain maps. *NeuroImage*, page 118052.
- [67] Matuskey, D., Bhagwagar, Z., Planeta, B., Pittman, B., Gallezot, J.-D., Chen, J., Wanyiri, J., Najafzadeh, S., Ropchan, J., Geha, P., et al. (2014). Reductions in brain 5-ht1b receptor availability in primarily cocaine-dependent humans. *Biological psychiatry*, 76(10):816–822.
- [68] McIntosh, A. R. and Mišić, B. (2013). Multivariate statistical analyses for neuroimaging data. *Annu Rev Psychol*,

- 64:499–525.
- [69] Mesulam, M.-M. (1998). From sensation to cognition. *Brain*, 121(6):1013–1052.
- [70] Mesulam, M.-M. (2000). Behavioral neuroanatomy. *Principles of behavioral and cognitive neurology*, 2:1–120.
- [71] Mišić, B., Betzel, R. F., Griffa, A., De Reus, M. A., He, Y., Zuo, X.-N., Van Den Heuvel, M. P., Hagmann, P., Sporns, O., and Zatorre, R. J. (2018). Network-based asymmetry of the human auditory system. *Cerebral Cortex*, 28(7):2655–2664.
- [72] Mišić, B., Betzel, R. F., Nematzadeh, A., Goni, J., Griffa, A., Hagmann, P., Flammini, A., Ahn, Y.-Y., and Sporns, O. (2015). Cooperative and competitive spreading dynamics on the human connectome. *Neuron*, 86(6):1518–1529.
- [73] Murray, J. D., Bernacchia, A., Freedman, D. J., Romo, R., Wallis, J. D., Cai, X., Padoa-Schioppa, C., Pasternak, T., Seo, H., Lee, D., et al. (2014). A hierarchy of intrinsic timescales across primate cortex. *Nature neuroscience*, 17(12):1661–1663.
- [74] Murrrough, J. W., Czermak, C., Henry, S., Nabulsi, N., Gallezot, J.-D., Gueorguieva, R., Planeta-Wilson, B., Krystal, J. H., Neumaier, J. F., Huang, Y., et al. (2011a). The effect of early trauma exposure on serotonin type 1b receptor expression revealed by reduced selective radioligand binding. *Archives of general psychiatry*, 68(9):892–900.
- [75] Murrrough, J. W., Henry, S., Hu, J., Gallezot, J.-D., Planeta-Wilson, B., Neumaier, J. F., and Neumeister, A. (2011b). Reduced ventral striatal/ventral pallidal serotonin 1b receptor binding potential in major depressive disorder. *Psychopharmacology*, 213(2):547–553.
- [76] Naganawa, M., Nabulsi, N., Henry, S., Matuskey, D., Lin, S.-F., Sliker, L., Schwarz, A. J., Kant, N., Jesudason, C., Ruley, K., et al. (2021). First-in-human assessment of 11c-lsn3172176, an m1 muscarinic acetylcholine receptor pet radiotracer. *Journal of Nuclear Medicine*, 62(4):553–560.
- [77] Neumeister, A., Normandin, M. D., Murrrough, J. W., Henry, S., Bailey, C. R., Luckenbaugh, D. A., Tuit, K., Zheng, M.-Q., Galatzer-Levy, I. R., Sinha, R., et al. (2012). Positron emission tomography shows elevated cannabinoid cb 1 receptor binding in men with alcohol dependence. *Alcoholism: Clinical and Experimental Research*, 36(12):2104–2109.
- [78] Nørgaard, M., Beliveau, V., Ganz, M., Svarer, C., Pinborg, L. H., Keller, S. H., Jensen, P. S., Greve, D. N., and Knudsen, G. M. (2021). A high-resolution in vivo atlas of the human brain’s benzodiazepine binding site of gabaa receptors. *NeuroImage*, 232:117878.
- [79] Normandin, M. D., Zheng, M.-Q., Lin, K.-S., Mason, N. S., Lin, S.-F., Ropchan, J., Labaree, D., Henry, S., Williams, W. A., Carson, R. E., et al. (2015). Imaging the cannabinoid cb1 receptor in humans with [11c] omar: assessment of kinetic analysis methods, test–retest reproducibility, and gender differences. *Journal of Cerebral Blood Flow & Metabolism*, 35(8):1313–1322.
- [80] Opel, N., Thalamuthu, A., Milaneschi, Y., Grotegerd, D., Flint, C., Leenings, R., Goltermann, J., Richter, M., Hahn, T., Woditsch, G., et al. (2020). Brain structural abnormalities in obesity: relation to age, genetic risk, and common psychiatric disorders. *Molecular psychiatry*, pages 1–14.
- [81] Palomero-Gallagher, N., Schleicher, A., Bidmon, H.-J., Pannek, H.-W., Hans, V., Gorji, A., Speckmann, E.-J., and Zilles, K. (2012). Multireceptor analysis in human neocortex reveals complex alterations of receptor ligand binding in focal epilepsies. *Epilepsia*, 53(11):1987–1997.
- [82] Palomero-Gallagher, N., Vogt, B. A., Schleicher, A., Mayberg, H. S., and Zilles, K. (2009). Receptor architecture of human cingulate cortex: Evaluation of the four-region neurobiological model. *Human brain mapping*, 30(8):2336–2355.
- [83] Palomero-Gallagher, N. and Zilles, K. (2019). Cortical layers: Cyto-, myelo-, receptor-and synaptic architecture in human cortical areas. *Neuroimage*, 197:716–741.
- [84] Paquola, C., De Wael, R. V., Wagstyl, K., Bethlehem, R. A., Hong, S.-J., Seidlitz, J., Bullmore, E. T., Evans, A. C., Mistic, B., Margulies, D. S., et al. (2019). Microstructural and functional gradients are increasingly dissociated in transmodal cortices. *PLoS biology*, 17(5):e3000284.
- [85] Pinheiro, E. S. D. S., Queirós, F. C. d., Montoya, P., Santos, C. L., Nascimento, M. A. d., Ito, C. H., Silva, M., Nunes Santos, D. B., Benevides, S., Miranda, J. G. V., et al. (2016). Electroencephalographic patterns in chronic pain: a systematic review of the literature. *PLoS one*, 11(2):e0149085.
- [86] Pittenger, C., Adams Jr, T. G., Gallezot, J.-D., Crowley, M. J., Nabulsi, N., Ropchan, J., Gao, H., Kichuk, S. A., Simpson, R., Billingslea, E., et al. (2016). Ocd is associated with an altered association between sensorimotor gating and cortical and subcortical 5-HT1b receptor binding. *Journal of affective disorders*, 196:87–96.
- [87] Ploner, M., Sorg, C., and Gross, J. (2017). Brain rhythms of pain. *Trends in cognitive sciences*, 21(2):100–110.
- [88] Poldrack, R. A., Kittur, A., Kalar, D., Miller, E., Seppa, C., Gil, Y., Parker, D. S., Sabb, F. W., and Bilder, R. M. (2011). The cognitive atlas: toward a knowledge foundation for cognitive neuroscience. *Frontiers Neuroinform*, 5:17.
- [89] Power, J. D., Barnes, K. A., Snyder, A. Z., Schlaggar, B. L., and Petersen, S. E. (2012). Spurious but systematic correlations in functional connectivity mri networks arise from subject motion. *Neuroimage*, 59(3):2142–2154.
- [90] Radhakrishnan, R., Matuskey, D., Nabulsi, N., Gaiser, E., Gallezot, J.-D., Henry, S., Planeta, B., Lin, S.-f., Ropchan, J., Huang, Y., et al. (2020). In vivo 5-HT6 and 5-HT2A receptor availability in antipsychotic treated schizophrenia patients vs. unmedicated healthy humans measured with [11c] gsk215083 pet. *Psychiatry Research: Neuroimaging*, 295:111007.
- [91] Radhakrishnan, R., Nabulsi, N., Gaiser, E., Gallezot, J.-D., Henry, S., Planeta, B., Lin, S.-f., Ropchan, J., Williams, W., Morris, E., et al. (2018). Age-related change in 5-HT6 receptor availability in healthy male volunteers measured with 11c-gsk215083 pet. *Journal of Nuclear Medicine*, 59(9):1445–1450.
- [92] Ranganathan, M., Cortes-Briones, J., Radhakrishnan, R., Thurnauer, H., Planeta, B., Skosnik, P., Gao, H., Labaree, D., Neumeister, A., Pittman, B., et al. (2016). Reduced brain cannabinoid receptor availability in schizophrenia. *Biological psychiatry*, 79(12):997–1005.
- [93] Richiardi, J., Altmann, A., Milazzo, A.-C., Chang, C., Chakravarty, M. M., Banaschewski, T., Barker, G. J., Bokde, A. L., Bromberg, U., Büchel, C., et al. (2015).

- Correlated gene expression supports synchronous activity in brain networks. *Science*, 348(6240):1241–1244.
- [94] Rinne, J., Anichtchik, O., Eriksson, K., Kaslin, J., Tuomisto, L., Kalimo, H., Røyttä, M., and Panula, P. (2002). Increased brain histamine levels in parkinson's disease but not in multiple system atrophy. *Journal of neurochemistry*, 81(5):954–960.
- [95] Roberts, J. A., Perry, A., Lord, A. R., Roberts, G., Mitchell, P. B., Smith, R. E., Calamante, F., and Breakspear, M. (2016). The contribution of geometry to the human connectome. *Neuroimage*, 124:379–393.
- [96] Rubinov, M. and Sporns, O. (2010). Complex network measures of brain connectivity: uses and interpretations. *Neuroimage*, 52(3):1059–1069.
- [97] Sagvolden, T., Johansen, E. B., Wøien, G., Walaas, S. I., Storm-Mathisen, J., Bergersen, L. H., Hvalby, Ø., Jensen, V., Aase, H., Russell, V. A., et al. (2009). The spontaneously hypertensive rat model of adhd—the importance of selecting the appropriate reference strain. *Neuropharmacology*, 57(7-8):619–626.
- [98] Salvador, R., Suckling, J., Coleman, M. R., Pickard, J. D., Menon, D., and Bullmore, E. (2005). Neurophysiological architecture of functional magnetic resonance images of human brain. *Cerebral cortex*, 15(9):1332–1342.
- [99] Samu, D., Seth, A. K., and Nowotny, T. (2014). Influence of wiring cost on the large-scale architecture of human cortical connectivity. *PLoS computational biology*, 10(4):e1003557.
- [100] Sanchez-Rangel, E., Gallezot, J.-D., Yeckel, C. W., Lam, W., Belfort-DeAguiar, R., Chen, M.-K., Carson, R. E., Sherwin, R., and Hwang, J. J. (2020). Norepinephrine transporter availability in brown fat is reduced in obesity: a human pet study with [11 c] mrb. *International Journal of Obesity*, 44(4):964–967.
- [101] Sandiego, C. M., Gallezot, J.-D., Lim, K., Ropchan, J., Lin, S.-f., Gao, H., Morris, E. D., and Cosgrove, K. P. (2015). Reference region modeling approaches for amphetamine challenge studies with [11c] flb 457 and pet. *Journal of Cerebral Blood Flow & Metabolism*, 35(4):623–629.
- [102] Sandiego, C. M., Matuskey, D., Lavery, M., McGovern, E., Huang, Y., Nabulsi, N., Ropchan, J., Picciotto, M. R., Morris, E. D., McKee, S. A., et al. (2018). The effect of treatment with guanfacine, an alpha2 adrenergic agonist, on dopaminergic tone in tobacco smokers: An [11 c] flb457 pet study. *Neuropsychopharmacology*, 43(5):1052–1058.
- [103] Saricicek, A., Chen, J., Planeta, B., Ruf, B., Subramanyam, K., Maloney, K., Matuskey, D., Labaree, D., Deserno, L., Neumeister, A., et al. (2015). Test–retest reliability of the novel 5-ht 1b receptor pet radioligand [11 c] p943. *European journal of nuclear medicine and molecular imaging*, 42(3):468–477.
- [104] Sasaki, T., Ito, H., Kimura, Y., Arakawa, R., Takano, H., Seki, C., Kodaka, F., Fujie, S., Takahata, K., Nogami, T., et al. (2012). Quantification of dopamine transporter in human brain using pet with 18f-fe-pe2i. *Journal of Nuclear Medicine*, 53(7):1065–1073.
- [105] Savli, M., Bauer, A., Mitterhauser, M., Ding, Y.-S., Hahn, A., Kroll, T., Neumeister, A., Haeusler, D., Ungersboeck, J., Henry, S., et al. (2012). Normative database of the serotonergic system in healthy subjects using multi-tracer pet. *Neuroimage*, 63(1):447–459.
- [106] Schmaal, L., Hibar, D., Sämann, P. G., Hall, G., Baune, B., Jahanshad, N., Cheung, J., Van Erp, T., Bos, D., Ikram, M. A., et al. (2017). Cortical abnormalities in adults and adolescents with major depression based on brain scans from 20 cohorts worldwide in the enigma major depressive disorder working group. *Molecular psychiatry*, 22(6):900–909.
- [107] Schwartz, J.-C. (2011). The histamine h3 receptor: from discovery to clinical trials with pitolisant. *British journal of pharmacology*, 163(4):713–721.
- [108] Seidlitz, J., Nadig, A., Liu, S., Bethlehem, R. A., Vértes, P. E., Morgan, S. E., Váša, F., Romero-Garcia, R., Lalonde, F. M., Clasen, L. S., et al. (2020). Transcriptional and cellular decoding of regional brain vulnerability to neurodevelopmental disorders. *Nature Communications*, .(.):.
- [109] Seidlitz, J., Váša, F., Shinn, M., Romero-Garcia, R., Whitaker, K. J., Vértes, P. E., Wagstyl, K., Reardon, P. K., Clasen, L., Liu, S., et al. (2018). Morphometric similarity networks detect microscale cortical organization and predict inter-individual cognitive variation. *Neuron*, 97(1):231–247.
- [110] Shafiei, G., Baillet, S., and Misic, B. (2021). Mapping electromagnetic networks to haemodynamic networks in the human brain. *bioRxiv*.
- [111] Shafiei, G., Markello, R. D., De Wael, R. V., Bernhardt, B. C., Fulcher, B. D., and Misic, B. (2020). Topographic gradients of intrinsic dynamics across neocortex. *Elife*, 9:e62116.
- [112] Shine, J. M. (2019). Neuromodulatory influences on integration and segregation in the brain. *Trends in cognitive sciences*, 23(7):572–583.
- [113] Shine, J. M., Breakspear, M., Bell, P. T., Martens, K. A. E., Shine, R., Koyejo, O., Sporns, O., and Poldrack, R. A. (2019). Human cognition involves the dynamic integration of neural activity and neuromodulatory systems. *Nat Neurosci*, 22(2):289–296.
- [114] Shine, J. M., Müller, E. J., Munn, B., Cabral, J., Moran, R. J., and Breakspear, M. (2021). Computational models link cellular mechanisms of neuromodulation to large-scale neural dynamics. *Nature neuroscience*, 24(6):765–776.
- [115] Slifstein, M., Van De Giessen, E., Van Snellenberg, J., Thompson, J. L., Narendran, R., Gil, R., Hackett, E., Girgis, R., Ojeil, N., Moore, H., et al. (2015). Deficits in prefrontal cortical and extrastriatal dopamine release in schizophrenia: a positron emission tomographic functional magnetic resonance imaging study. *JAMA psychiatry*, 72(4):316–324.
- [116] Smart, K., Cox, S. M., Scala, S. G., Tippler, M., Jaworska, N., Boivin, M., Séguin, J. R., Benkelfat, C., and Leyton, M. (2019). Sex differences in [11 c] abp688 binding: a positron emission tomography study of mglu5 receptors. *European journal of nuclear medicine and molecular imaging*, 46(5):1179–1183.
- [117] Smith, C. T., Crawford, J. L., Dang, L. C., Seaman, K. L., San Juan, M. D., Vijay, A., Katz, D. T., Matuskey, D., Cowan, R. L., Morris, E. D., et al. (2019). Partial-volume correction increases estimated dopamine d2-like receptor binding potential and reduces adult age differences. *Journal of Cerebral Blood Flow & Metabolism*, 39(5):822–833.
- [118] Sporns, O. (2013). Network attributes for segregation and integration in the human brain. *Current opinion in*

- neurobiology*, 23(2):162–171.
- [119] Sporns, O. and Betzel, R. F. (2016). Modular brain networks. *Annual review of psychology*, 67:613–640.
- [120] Starr, M. S. (1996). The role of dopamine in epilepsy. *Synapse*, 22(2):159–194.
- [121] Suárez, L. E., Markello, R. D., Betzel, R. F., and Misić, B. (2020). Linking structure and function in macroscale brain networks. *Trends Cogn Sci*.
- [122] Sun, D., Ching, C. R., Lin, A., Forsyth, J. K., Kushan, L., Vajdi, A., Jalbrzikowski, M., Hansen, L., Villalón-Reina, J. E., Qu, X., et al. (2020). Large-scale mapping of cortical alterations in 22q11.2 deletion syndrome: convergence with idiopathic psychosis and effects of deletion size. *Molecular psychiatry*, 25(8):1822–1834.
- [123] Tadel, F., Baillet, S., Mosher, J. C., Pantazis, D., and Leahy, R. M. (2011). Brainstorm: a user-friendly application for meg/eeg analysis. *Computational intelligence and neuroscience*, 2011.
- [124] Talbot, P. S., Slifstein, M., Hwang, D.-R., Huang, Y., Scher, E., Abi-Dargham, A., and Laruelle, M. (2012). Extended characterisation of the serotonin 2a (5-HT_{2A}) receptor-selective pet radiotracer 11c-mdl100907 in humans: quantitative analysis, test–retest reproducibility, and vulnerability to endogenous 5-HT tone. *Neuroimage*, 59(1):271–285.
- [125] Thompson, P. M., Jahanshad, N., Ching, C. R., Salminen, L. E., Thomopoulos, S. I., Bright, J., Baune, B. T., Bertolín, S., Bralten, J., Bruin, W. B., et al. (2020). Enigma and global neuroscience: A decade of large-scale studies of the brain in health and disease across more than 40 countries. *Translational psychiatry*, 10(1):1–28.
- [126] Turtonen, O., Saarinen, A., Nummenmaa, L., Tuominen, L., Tikka, M., Armio, R.-L., Hautamäki, A., Laurikainen, H., Raitakari, O., Keltikangas-Järvinen, L., et al. (2021). Adult attachment system links with brain mu opioid receptor availability in vivo. *Biological Psychiatry: Cognitive Neuroscience and Neuroimaging*, 6(3):360–369.
- [127] Van de Bittner, G. C., Ricq, E. L., and Hooker, J. M. (2014). A philosophy for cns radiotracer design. *Accounts of chemical research*, 47(10):3127–3134.
- [128] van den Brink, R. L., Pfeffer, T., and Donner, T. H. (2019). Brainstem modulation of large-scale intrinsic cortical activity correlations. *Frontiers in human neuroscience*, 13:340.
- [129] Van den Heuvel, M. P., Bullmore, E. T., and Sporns, O. (2016). Comparative connectomics. *Trends in cognitive sciences*, 20(5):345–361.
- [130] Van Erp, T. G., Walton, E., Hibar, D. P., Schmaal, L., Jiang, W., Glahn, D. C., Pearlson, G. D., Yao, N., Fukunaga, M., Hashimoto, R., et al. (2018). Cortical brain abnormalities in 4474 individuals with schizophrenia and 5098 control subjects via the enhancing neuro imaging genetics through meta analysis (enigma) consortium. *Biological psychiatry*, 84(9):644–654.
- [131] Van Essen, D. C., Smith, S. M., Barch, D. M., Behrens, T. E., Yacoub, E., Ugurbil, K., Consortium, W.-M. H., et al. (2013). The wu-minn human connectome project: an overview. *Neuroimage*, 80:62–79.
- [132] van Galen, K. A., Ter Horst, K. W., and Serlie, M. J. (2021). Serotonin, food intake, and obesity. *Obesity Reviews*, page e13210.
- [133] Van Rooij, D., Anagnostou, E., Arango, C., Auzias, G., Behrmann, M., Busatto, G. F., Calderoni, S., Daly, E., Deruelle, C., Di Martino, A., et al. (2018). Cortical and subcortical brain morphometry differences between patients with autism spectrum disorder and healthy individuals across the lifespan: results from the enigma asd working group. *American Journal of Psychiatry*, 175(4):359–369.
- [134] Vázquez-Rodríguez, B., Suárez, L. E., Markello, R. D., Shafiei, G., Paquola, C., Hagmann, P., Van Den Heuvel, M. P., Bernhardt, B. C., Spreng, R. N., and Misić, B. (2019). Gradients of structure–function tethering across neocortex. *Proceedings of the National Academy of Sciences*, 116(42):21219–21227.
- [135] Vázquez-Rodríguez, B., Liu, Z.-Q., Hagmann, P., and Misić, B. (2020). Signal propagation via cortical hierarchies. *Network Neuroscience*, 4(4):1072–1090.
- [136] Vidal-Pineiro, D., Parker, N., Shin, J., French, L., Grydeland, H., Jackowski, A. P., Mowinckel, A. M., Patel, Y., Pausova, Z., Salum, G., et al. (2020). Cellular correlates of cortical thinning throughout the lifespan. *Scientific Reports*, 10(1):1–14.
- [137] Wagstyl, K., Larocque, S., Cucurull, G., Lepage, C., Cohen, J. P., Bludau, S., Palomero-Gallagher, N., Lewis, L. B., Funck, T., Spitzer, H., et al. (2020). Bigbrain 3d atlas of cortical layers: Cortical and laminar thickness gradients diverge in sensory and motor cortices. *PLoS biology*, 18(4):e3000678.
- [138] Wang, D., Tawfik, V. L., Corder, G., Low, S. A., François, A., Basbaum, A. I., and Scherrer, G. (2018). Functional divergence of delta and mu opioid receptor organization in cns pain circuits. *Neuron*, 98(1):90–108.
- [139] Whelan, C. D., Altmann, A., Botía, J. A., Jahanshad, N., Hibar, D. P., Absil, J., Alhusaini, S., Alvim, M. K., Auvinen, P., Bartolini, E., et al. (2018). Structural brain abnormalities in the common epilepsies assessed in a worldwide enigma study. *Brain*, 141(2):391–408.
- [140] Witjes, B., Baillet, S., Roy, M., Oostenveld, R., Huygen, F. J., and de Vos, C. C. (2021). Magnetoencephalography reveals increased slow-to-fast alpha power ratios in patients with chronic pain. *Pain reports*, 6(2).
- [141] Yarkoni, T., Poldrack, R. A., Nichols, T. E., Van Essen, D. C., and Wager, T. D. (2011). Large-scale automated synthesis of human functional neuroimaging data. *Nat Meth*, 8(8):665.
- [142] Yeo, B., Krienen, F. M., Sepulcre, J., Sabuncu, M. R., Lashkari, D., Hollinshead, M., Roffman, J. L., Smoller, J. W., Zöllei, L., Polimeni, J. R., et al. (2011). The organization of the human cerebral cortex estimated by intrinsic functional connectivity. *J Neurophysiol*, 106(3):1125–1165.
- [143] Zakiniaez, Y., Hillmer, A. T., Matuskey, D., Nabulsi, N., Ropchan, J., Mazure, C. M., Picciotto, M. R., Huang, Y., McKee, S. A., Morris, E. D., et al. (2019). Sex differences in amphetamine-induced dopamine release in the dorsolateral prefrontal cortex of tobacco smokers. *Neuropsychopharmacology*, 44(13):2205–2211.
- [144] Zilles, K., Bacha-Trams, M., Palomero-Gallagher, N., Amunts, K., and Friederici, A. D. (2015). Common molecular basis of the sentence comprehension network revealed by neurotransmitter receptor fingerprints. *Cortex*, 63:79–89.
- [145] Zilles, K. and Palomero-Gallagher, N. (2017). Multiple transmitter receptors in regions and layers of the human cerebral cortex. *Frontiers in neuroanatomy*, 11:78.
- [146] Zilles, K., Palomero-Gallagher, N., Grefkes, C., Scheperjans, F., Boy, C., Amunts, K., and Schleicher, A. (2002).

Architectonics of the human cerebral cortex and transmitter receptor fingerprints: reconciling functional neuroanatomy and neurochemistry. *European neuropsychopharmacology*, 12(6):587–599.

- [147] Zilles, K., Schleicher, A., Rath, M., and Bauer, A. (1988). Quantitative receptor autoradiography in the human brain. *Histochemistry*, 90(2):129–137.
- [148] Zubieta, J.-K., Smith, Y. R., Bueller, J. A., Xu, Y., Kilbourn, M. R., Jewett, D. M., Meyer, C. R., Koeppe, R. A., and Stohler, C. S. (2001). Regional mu opioid receptor regulation of sensory and affective dimensions of pain. *Science*, 293(5528):311–315.

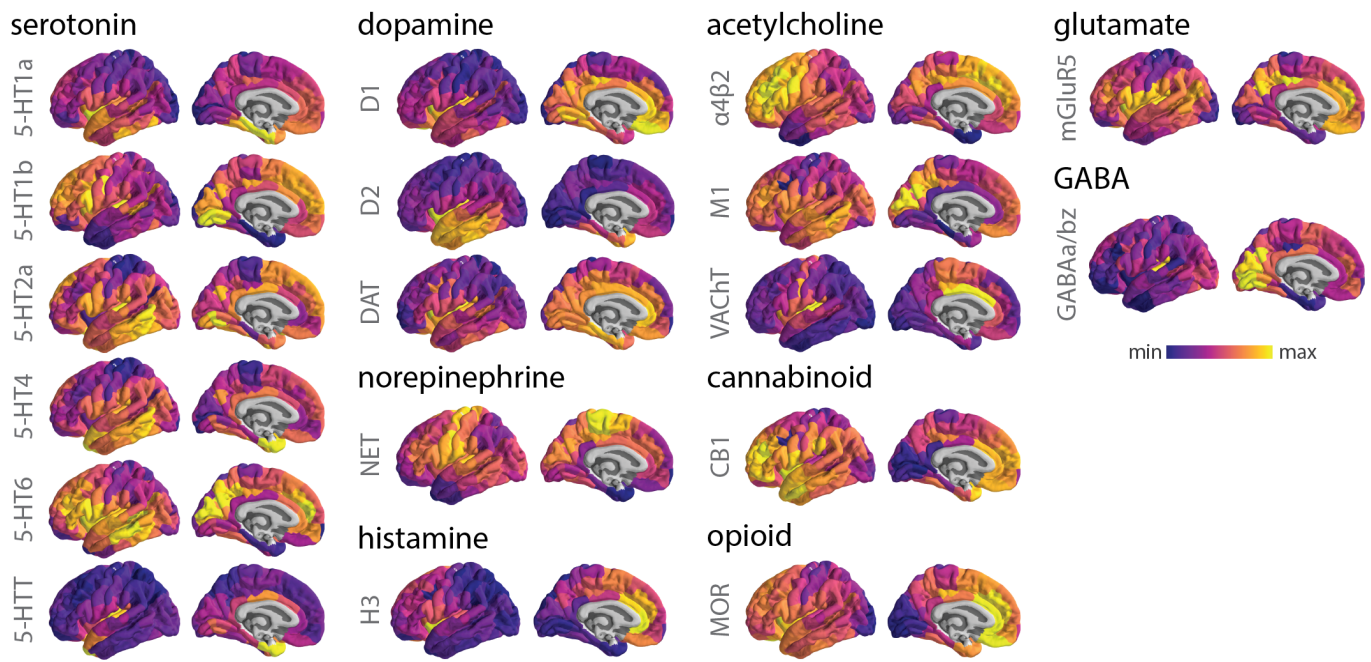
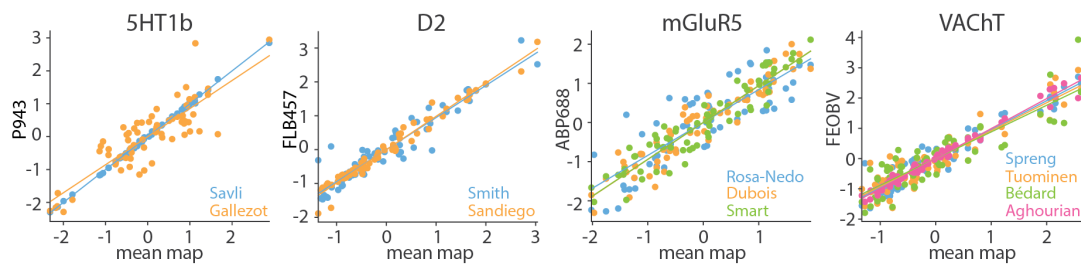


Figure S1. **PET images of neurotransmitter receptors and transporters** | PET tracer images for 18 different neurotransmitter receptors and transporters across 9 different neurotransmitter systems and over 1 200 healthy were collected.

Receptor	Neurotransmitter	Excitatory/Inhibitory	Ionotropic/Metabotropic
AMPA	glutamate	excitatory	ionotropic
NMDA	glutamate	excitatory	ionotropic
Kainate	glutamate	excitatory	ionotropic
GABA _A	GABA	inhibitory	ionotropic
GABA _{A/BZ}	GABA	inhibitory	ionotropic
GABA _B	GABA	inhibitory	metabotropic
M ₁	acetylcholine	excitatory	metabotropic
M ₂	acetylcholine	inhibitory	metabotropic
M ₃	acetylcholine	excitatory	metabotropic
α ₄ β ₂	acetylcholine	excitatory	ionotropic
α ₁	norepinephrine	excitatory	metabotropic
α ₂	norepinephrine	inhibitory	metabotropic
5-HT _{1A}	serotonin	inhibitory	metabotropic
5-HT ₂	serotonin	excitatory	metabotropic
D ₁	dopamine	excitatory	metabotropic

TABLE S1. Neurotransmitter receptors included in the autoradiography dataset

a | combining the same PET tracer



b | comparing alternative PET tracers

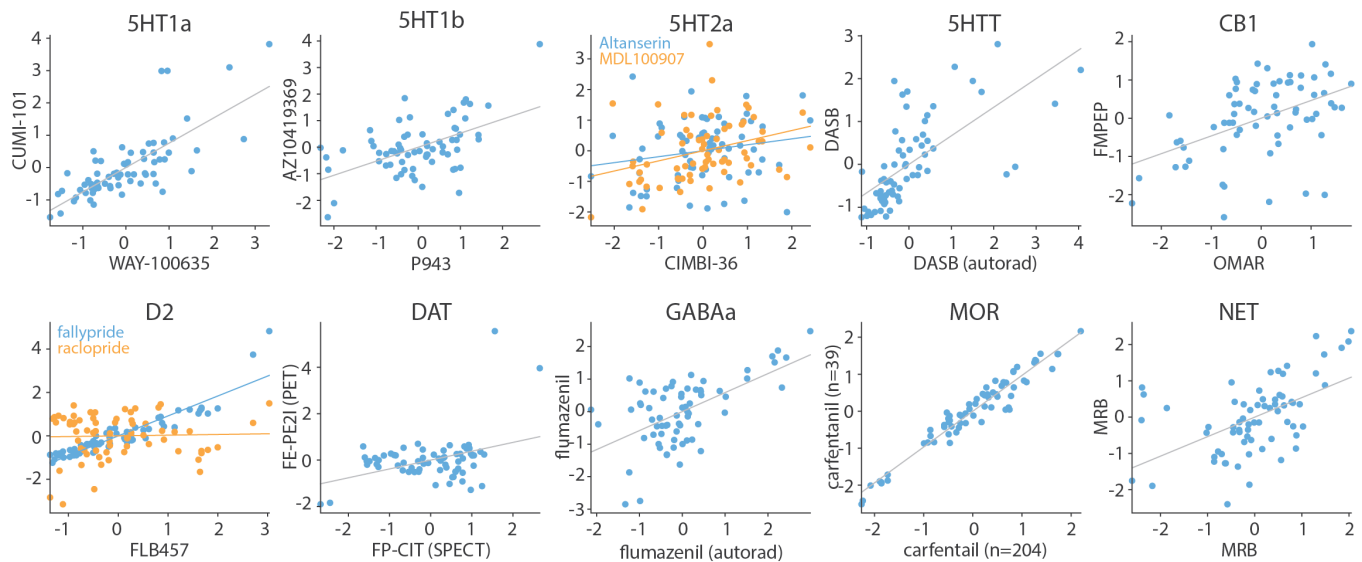


Figure S2. **Comparing different PET tracer images** | (a) PET maps of the same tracer were combined into a single average receptor/transporter map. Each individual PET tracer map (y -axis) is highly correlated to the mean map (x -axis). Names indicate the source of each PET map; see Table 1. (b) Multiple PET tracers were available for certain receptors/transporters. Scatter plots show the correlation between the selected tracer map (x -axis) and alternative maps (y -axis).

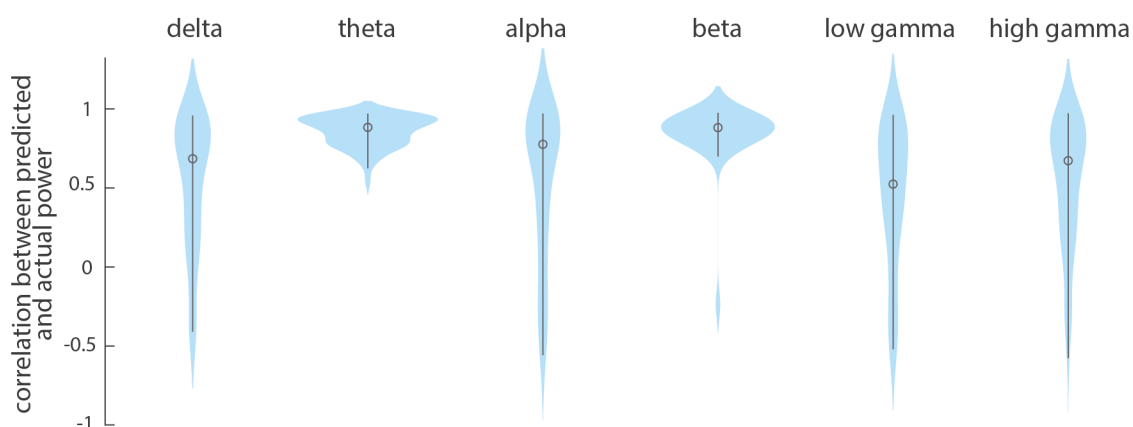


Figure S3. **Cross-validating models that predict MEG power distribution from receptor/transporter densities** | All six multilinear models between receptor/transporter densities and MEG power distributions were cross-validated using a distance-dependent method. This method selects the 25% of regions closest to a source-region as a training set and the remaining 75% of regions as the test set. The procedure is repeated for each brain region as the source region (68 iterations). We assessed the prediction by correlating predicted power to the empirical power in the test set.

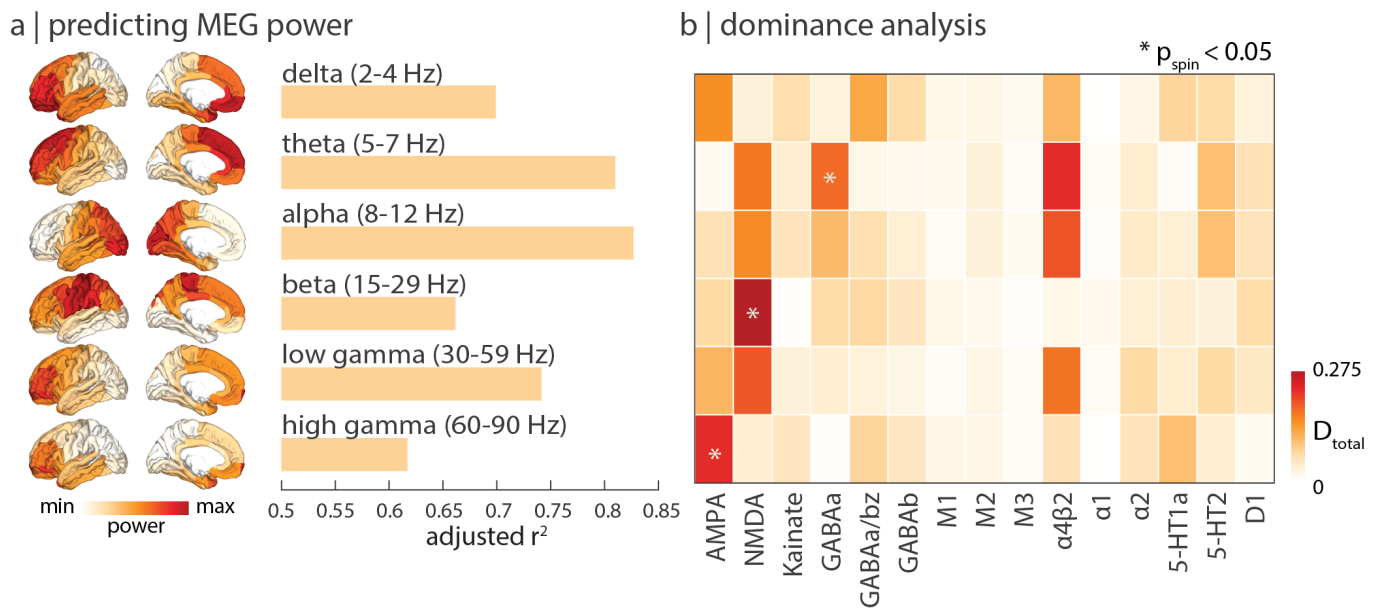


Figure S4. Excitatory ionotropic receptor densities shape neural dynamics | Multilinear regression models were fit between autoradiography-derived neurotransmitter receptor densities and MEG power, done analogously in Fig. 3. (a) Autoradiography-derived receptor densities map closely to neural dynamics. (b) Dominance analysis was applied to distribute the overall fit (adjusted R^2) across the independent variables (receptors), revealing that excitatory ionotropic receptors contribute most to neural dynamics. Asterisks indicate significant dominance $p_{\text{spin}} < 0.05$.

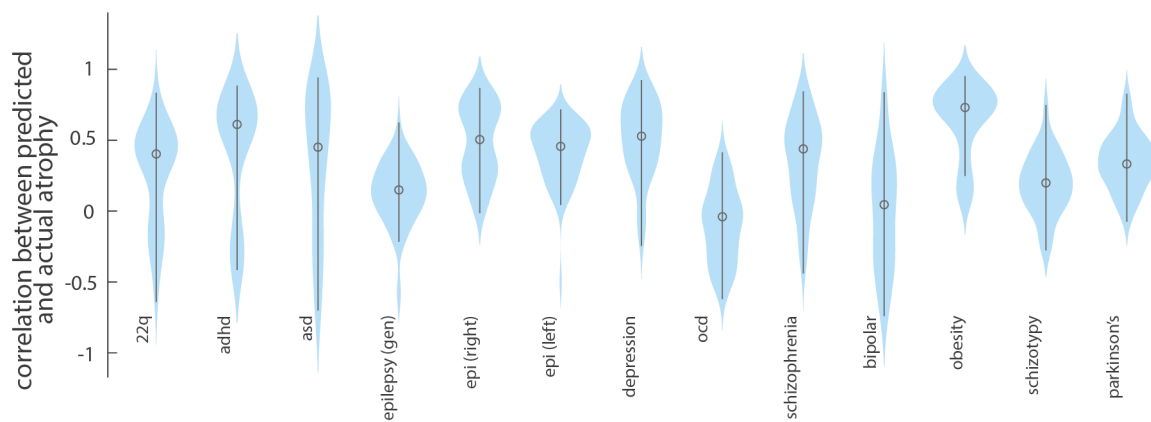


Figure S5. Cross-validating models that predict disorder-specific cortical thinning from receptor/transporter densities | All thirteen multilinear models between receptor/transporter densities and disorder-specific cortical thinning were cross-validated using a distance-dependent method. This method selects the 25% of regions closest to a source-region as a training set and the remaining 75% of regions as the test set. The procedure is repeated for each brain region as the source region (68 iterations). We assessed the prediction by correlating predicted atrophy to the empirical atrophy in the test set.

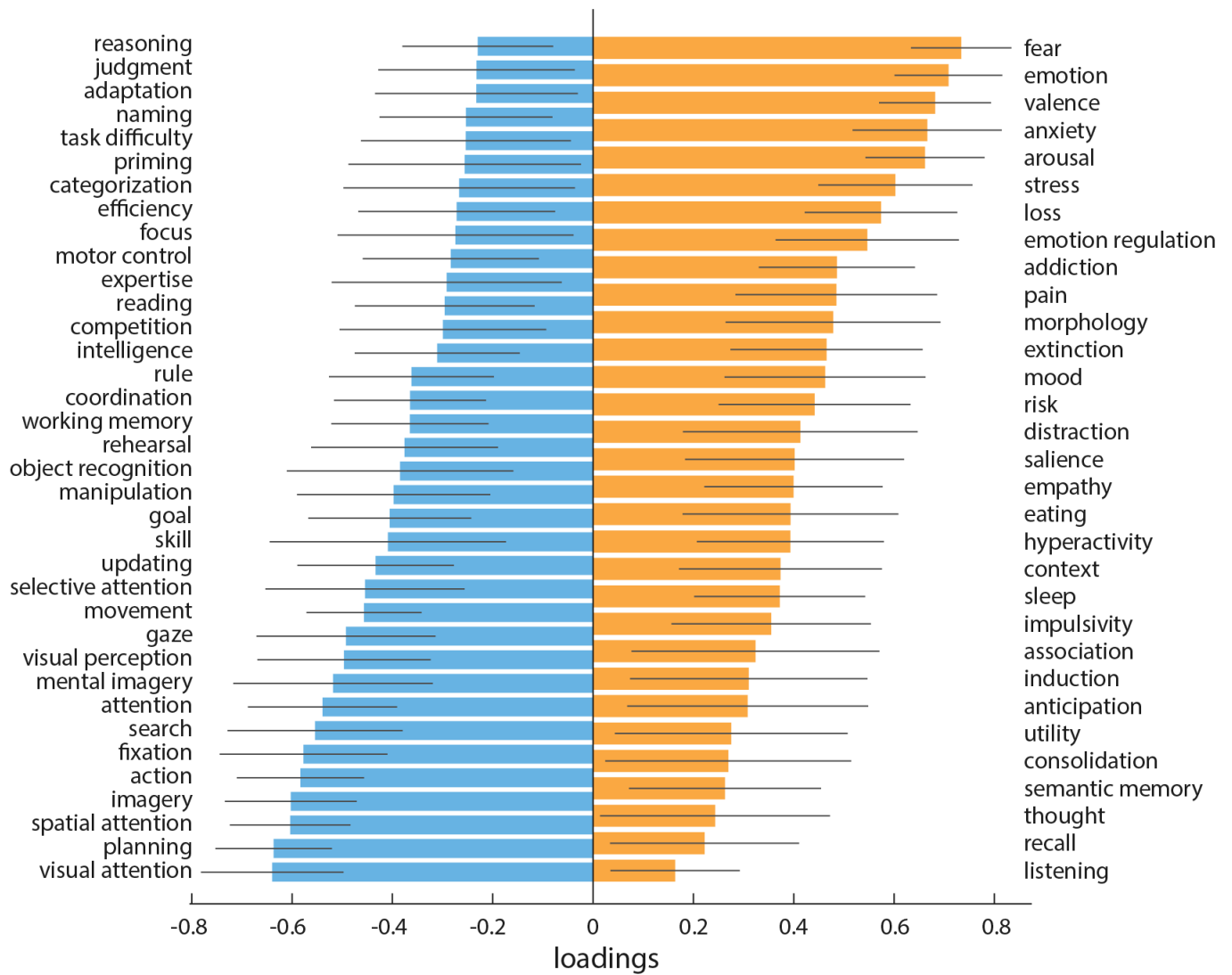


Figure S6. **Neurosynth cognitive loadings** | The loading for each cognitive process is calculated as the Pearson's correlation between functional activations across brain regions and PLS-derived receptor scores. Error bars indicate bootstrap-estimated 95% confidence intervals (10 000 bootstrap samples). All cognitive processes with a confidence interval that changes sign are excluded.

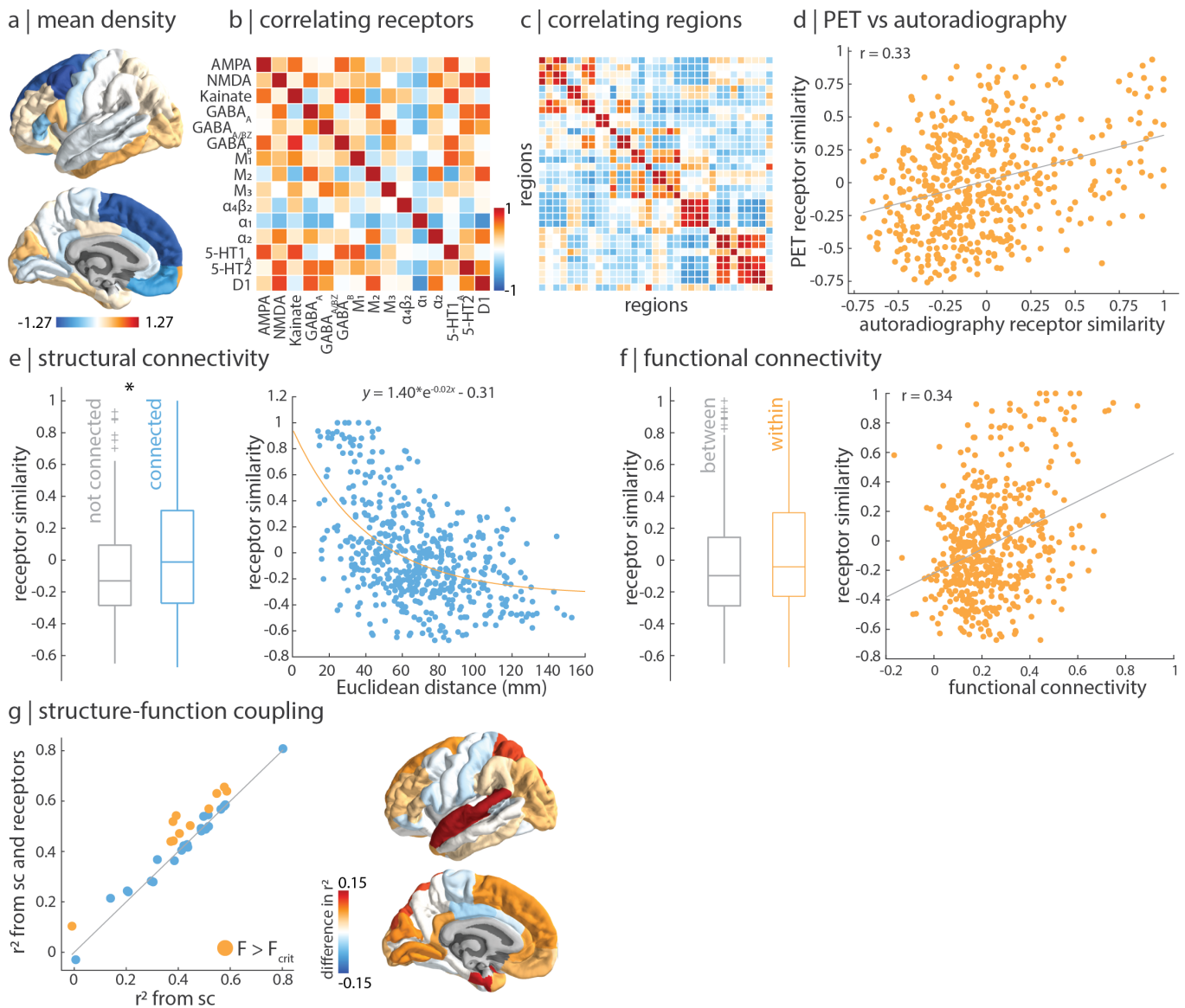


Figure S7. Autoradiography-informed neurotransmitter receptor densities follow similar organizational principles as PET-informed neurotransmitter receptor densities | Autoradiography images of fifteen neurotransmitter receptors across three post-mortem brains were acquired by [145]. (a) Mean z-scored density, excluding the insula for which no data was available. (b) Pearson's correlation between the receptor distribution across $n = 33$ brain regions for every pair of receptors. (c) The receptor similarity matrix is constructed by correlating receptor fingerprints at each pair of brain regions. (d) PET-derived receptor similarity is correlated to autoradiography-derived receptor similarity ($r = 0.33$, $p = 1.2 \times 10^{-14}$). (e) Receptor similarity is significantly greater between pairs of regions that are physically connected, against a degree- and edge-length-preserving null model (left; $p = 0.04$ [13]), and decays exponentially with Euclidean distance (right). (f) Receptor similarity is non-significantly greater in regions within the same functional network as opposed to between functional networks (left; $p_{\text{spin}} = 0.11$), and is correlated to functional connectivity (right; $r = 0.34$, $p = 9.4 \times 10^{-16}$). (g) Consistent with PET-derived results, receptor similarity augments structure-function coupling in temporal and prefrontal regions. Asterisks in panel (e) denote significance. Boxplots in (e) and (f) represent the 1st, 2nd (median) and 3rd quartiles, whiskers represent the non-outlier end-points of the distribution, and crosses represent outliers.

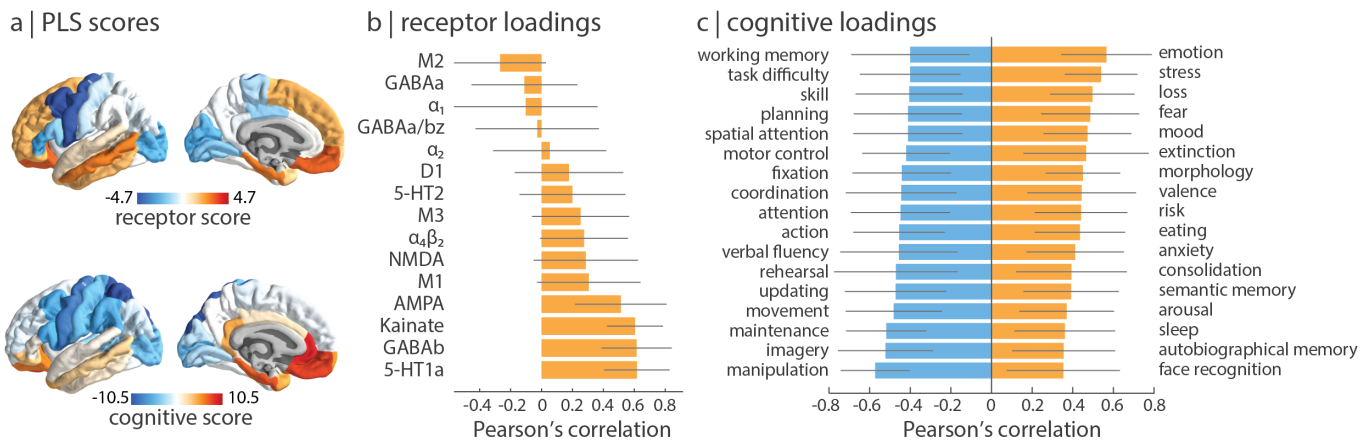
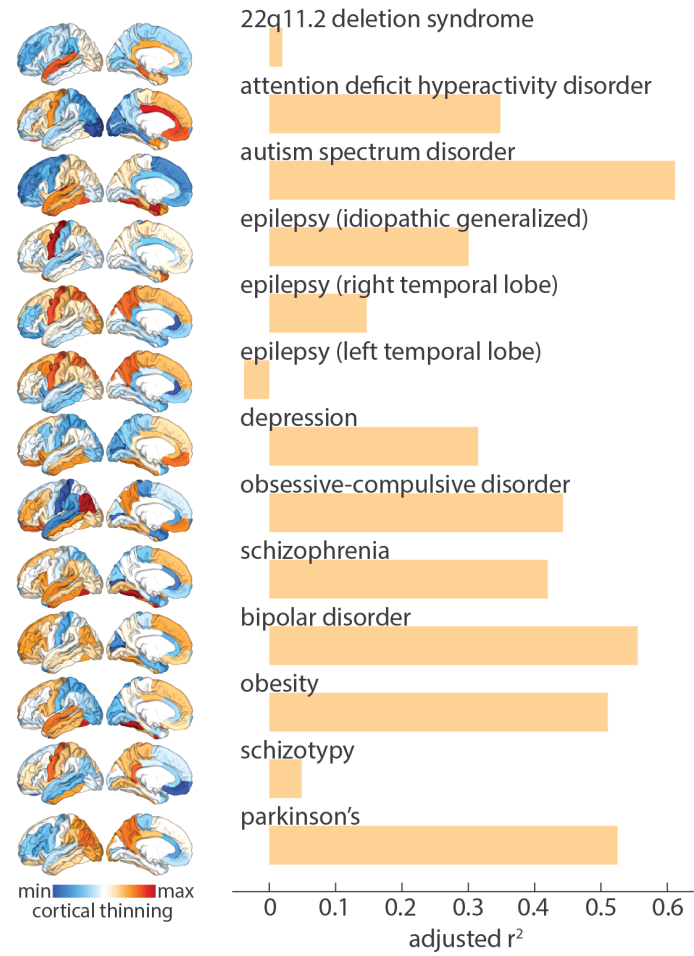


Figure S8. Mapping autoradiography-derived receptors to cognition | Partial least squares analysis was applied to autoradiography-derived receptor densities and Neurosynth-derived cognitive functional activations, done analogously in Fig. 4. (a) Receptor (top) and cognitive (bottom) score patterns follow a similar sensory-fugal gradient. (b) Receptor loadings are defined as the Pearson's correlation between each receptor's distribution across the cortex and the PLS-derived receptor scores and can be interpreted as the contribution of each receptor to the latent variable. (c) Cognitive loadings are shown for most positively- and negatively-loaded cognitive processes. 95% confidence intervals are estimated for receptor and cognitive loadings using bootstrap resampling (10 000 repetitions).

action	eating	insight	naming	semantic memory
adaptation	efficiency	integration	navigation	sentence comprehension
addiction	effort	intelligence	object recognition	skill
anticipation	emotion	intention	pain	sleep
anxiety	emotion regulation	interference	perception	social cognition
arousal	empathy	judgment	planning	spatial attention
association	encoding	knowledge	priming	speech perception
attention	episodic memory	language	psychosis	speech production
autobiographical memory	expectancy	language comprehension	reading	strategy
balance	expertise	learning	reasoning	strength
belief	extinction	listening	recall	stress
categorization	face recognition	localization	recognition	sustained attention
cognitive control	facial expression	loss	rehearsal	task difficulty
communication	familiarity	maintenance	reinforcement learning	thought
competition	fear	manipulation	response inhibition	uncertainty
concept	fixation	meaning	response selection	updating
consciousness	focus	memory	retention	utility
consolidation	gaze	memory retrieval	retrieval	valence
context	goal	mental imagery	reward anticipation	verbal fluency
coordination	hyperactivity	monitoring	rhythm	visual attention
decision	imagery	mood	risk	visual perception
decision making	impulsivity	morphology	rule	word recognition
detection	induction	motor control	salience	working memory
discrimination	inference	movement	search	
distraction	inhibition	multisensory	selective attention	

TABLE S2. Neurosynth terms | Terms that overlapped between the Neurosynth database [141] and the Cognitive Atlas [88] were included in the PLS analysis.

a | cortical thinning



b | dominance analysis

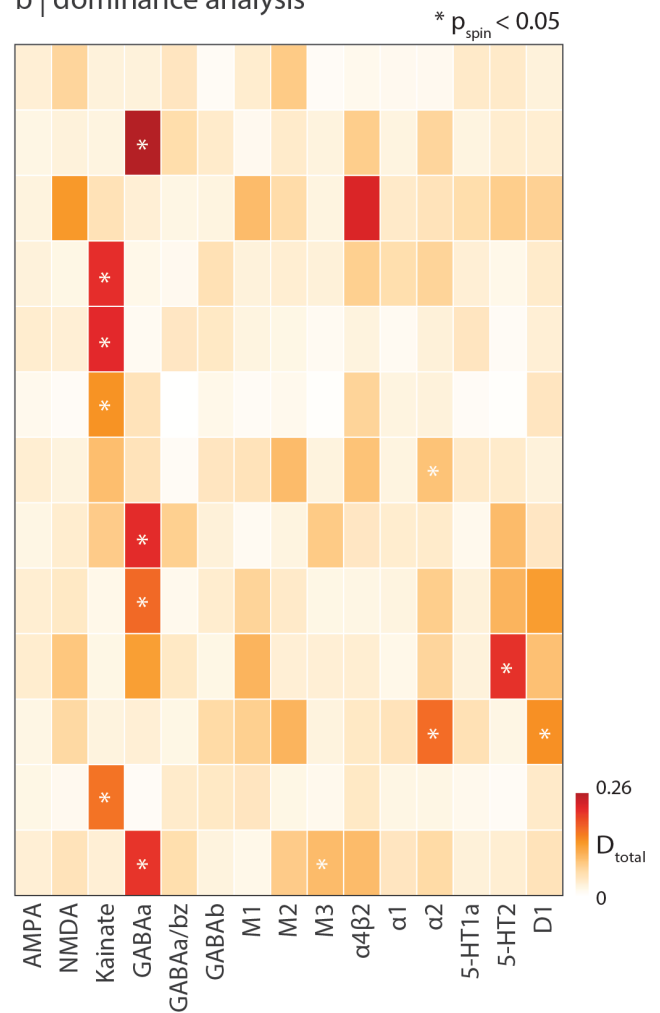


Figure S9. **Mapping autoradiography-derived receptors to disease vulnerability** | For each disorder, we fit a multilinear regression model between autoradiography-derived receptor densities and cortical thinning, done analogously in Fig. 5. (a) Model fit (adjusted R^2) varies across disorders. (b) Dominance analysis identified the neurotransmitter receptors whose spatial distribution most influence model fit, for each disorder separately. Asterisks indicate significant dominance ($p_{\text{spin}} < 0.05$).

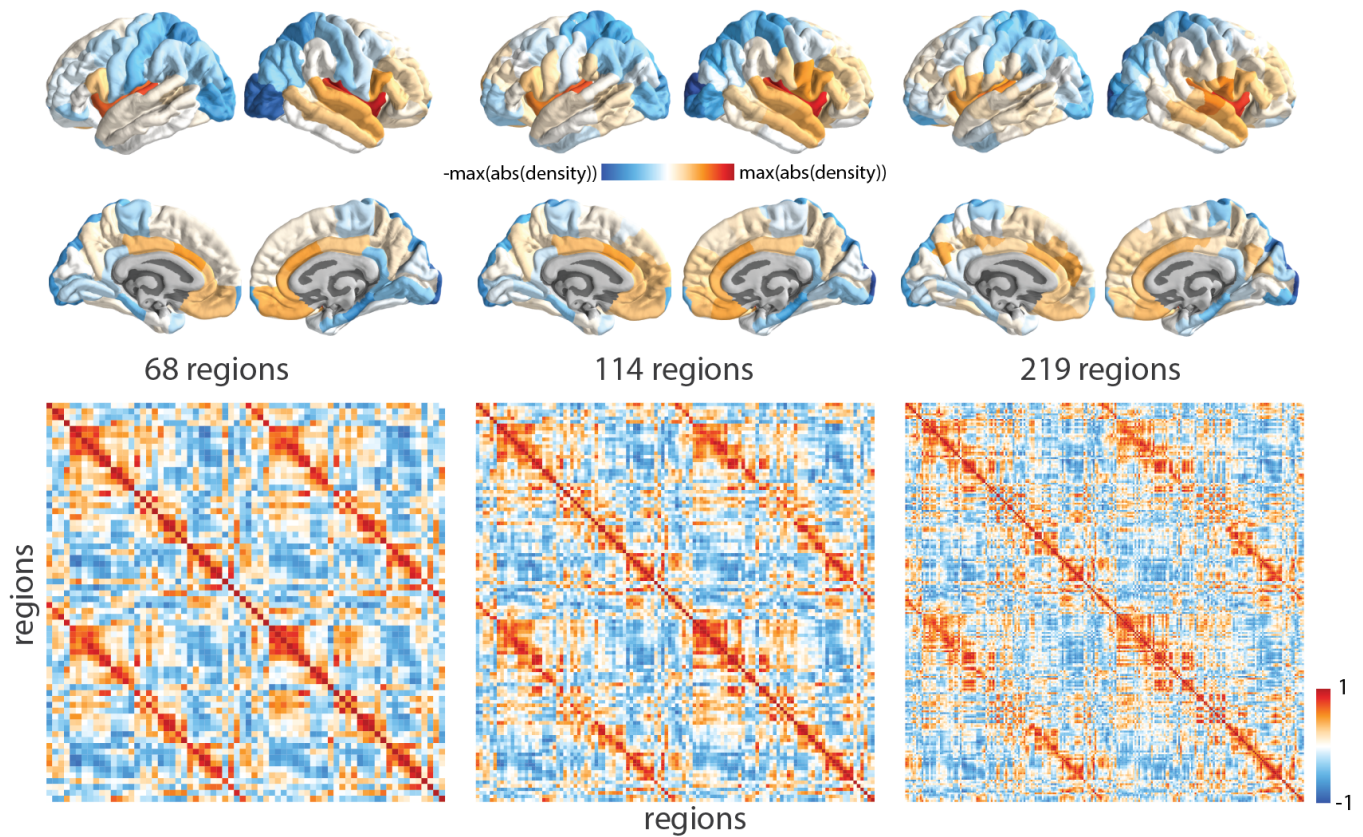


Figure S10. **Replicating results using different parcellation resolutions** | Top: mean normalized neurotransmitter receptor/transporter density maps are consistent across three increasingly fine parcellation resolutions (68 regions (original), 114 regions, and 219 regions) [18]. Bottom: receptor similarity matrices also demonstrate high conformity across parcellation resolutions.

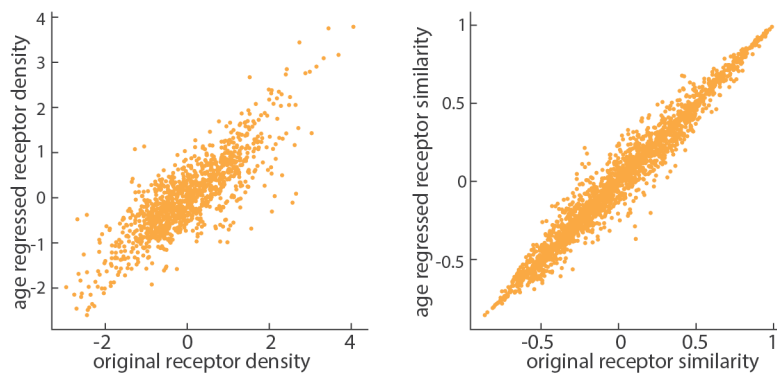


Figure S11. **Age has negligible effect on the reported findings** | To test age effects of the PET tracer images, we regressed out the relationship between mean age of each tracer map and z-scored receptor densities, at each brain region separately. Age has little impact on receptor density (left; $r = 0.82$) and receptor similarity (right; $r = 0.98$).