

Supplementary Figure Legends

Supplementary Figure 1: Flow cytometric gating and cell-sorting strategy for blood monocytes and neutrophils used in Figure 1, 2, 4 and 6.

Supplementary Figure 2: Flow cytometric gating strategy for BM monocytes in Figure 1 and Figure 2E.

Supplementary Figure 3: Flow cytometric gating strategy for identification and sorting of BM Ly6C^{high} monocytes, MDPs and cMoPs in Figure 2A, C and Figure 6.

Supplementary Figure 4: Flow cytometric gating strategy for identification and sorting of BM LK in Figure 2A and B.

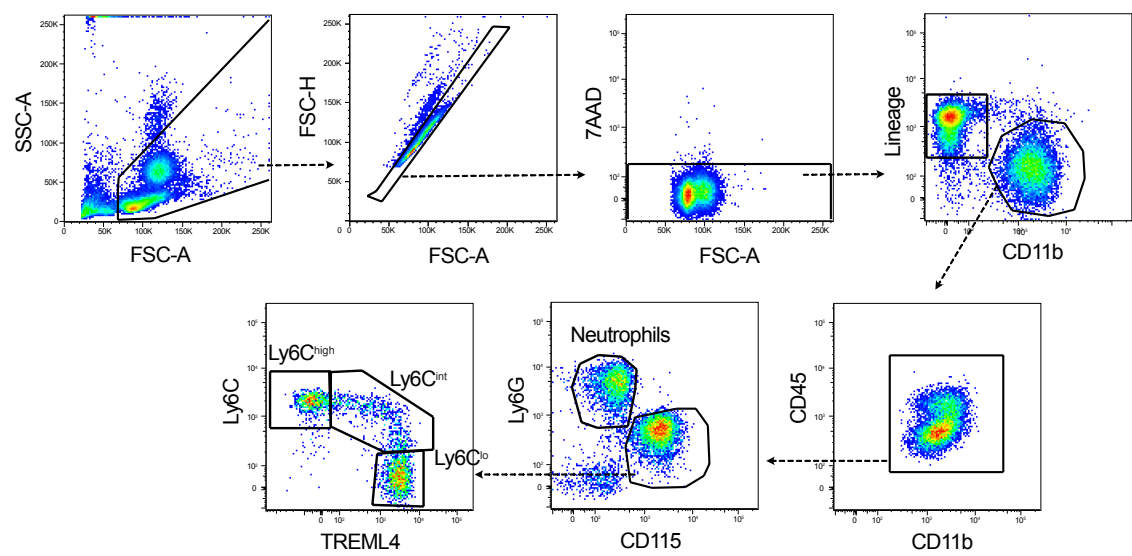
Supplementary Figure 5: Flow cytometric gating strategy for identification of BM myeloid progenitors in Figure 2D.

Supplementary Figure 6: Flow cytometric gating strategy for identification of splenic Ly6C^{high} monocytes and MDP in Figure 3.

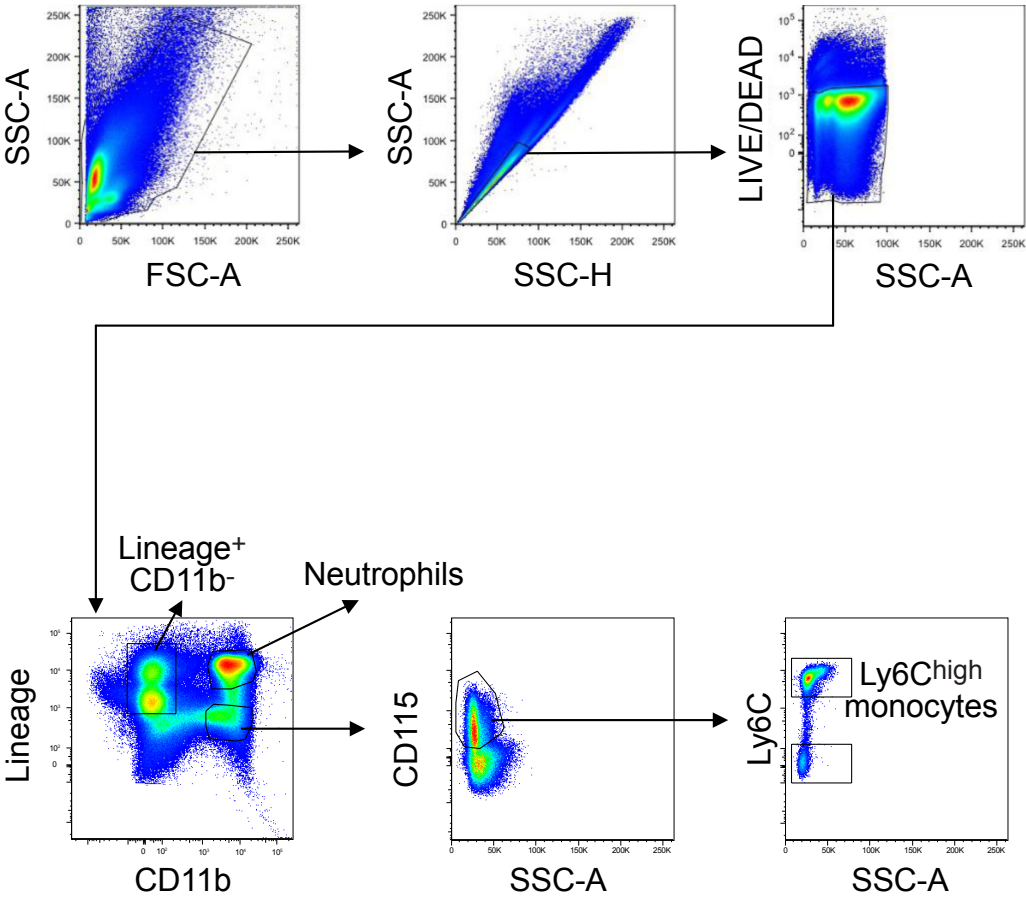
Supplementary Figure 7: Identification of BrdU⁺ monocytes in the blood (A), BM (B) and spleen (C) in Figure 2D-F and Figure 3F. Example staining taken at 24 (A) or 1 (B-C) hrs post-injection of BrdU.

Supplementary Figure 8: Bulk RNA sequencing of Ly6C^{high} and Ly6C^{low} blood monocytes from C57BL/6 mice with late cancer and littermate controls. *(A) PCA of all monocytic samples derived from total RNAseq (B) PCA of Ly6C^{low} monocytes derived from total RNAseq*

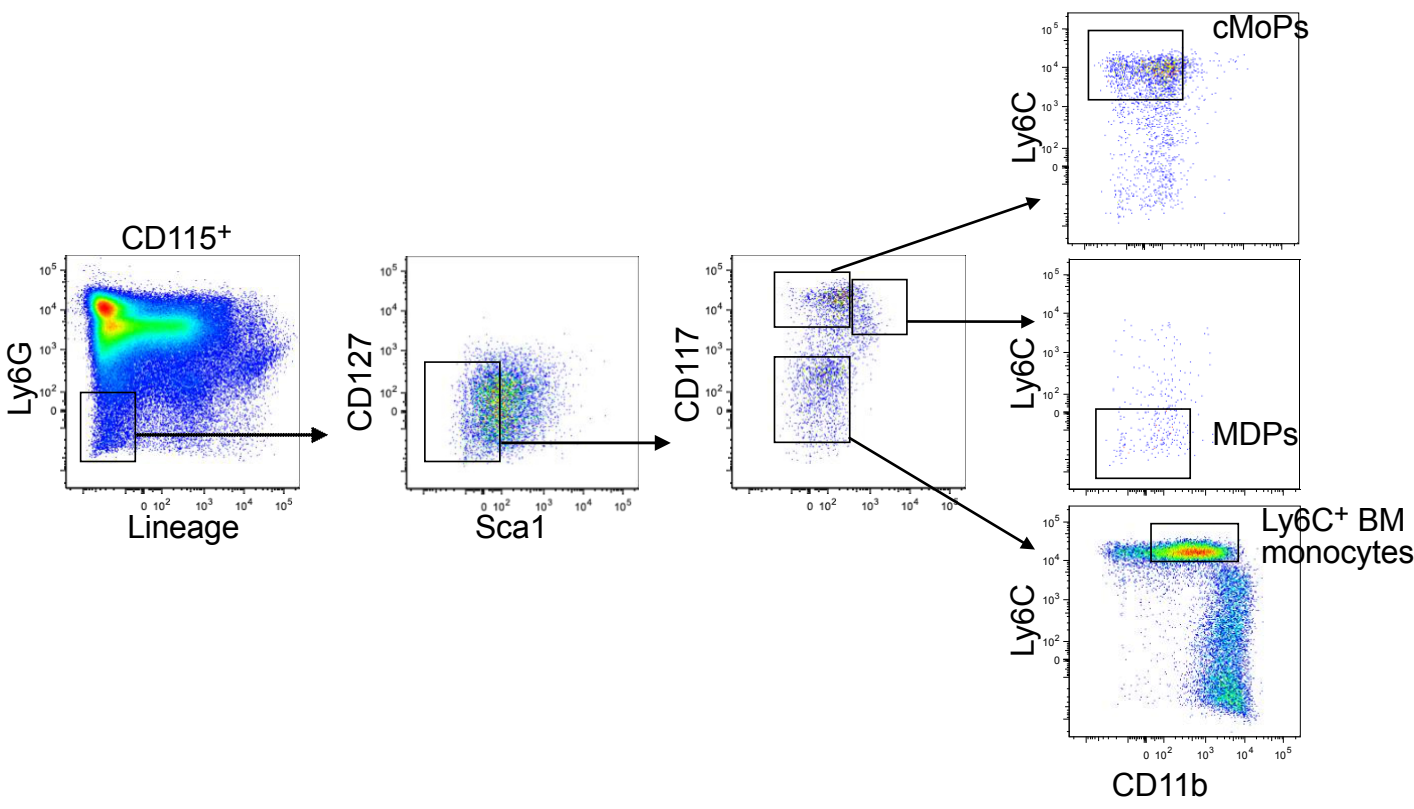
Supplementary Figure 1



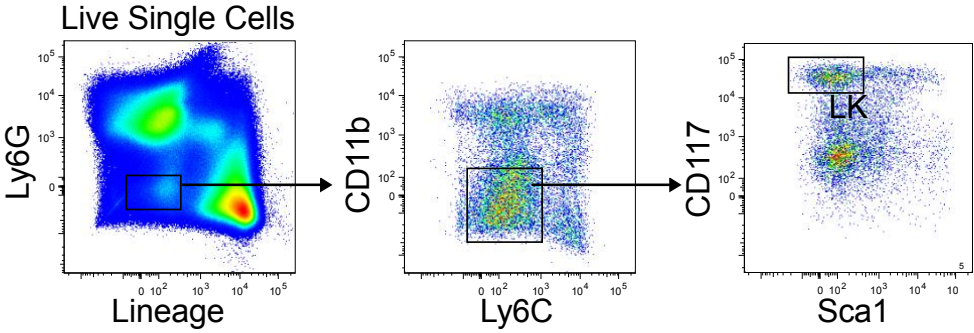
Supplementary Figure 2



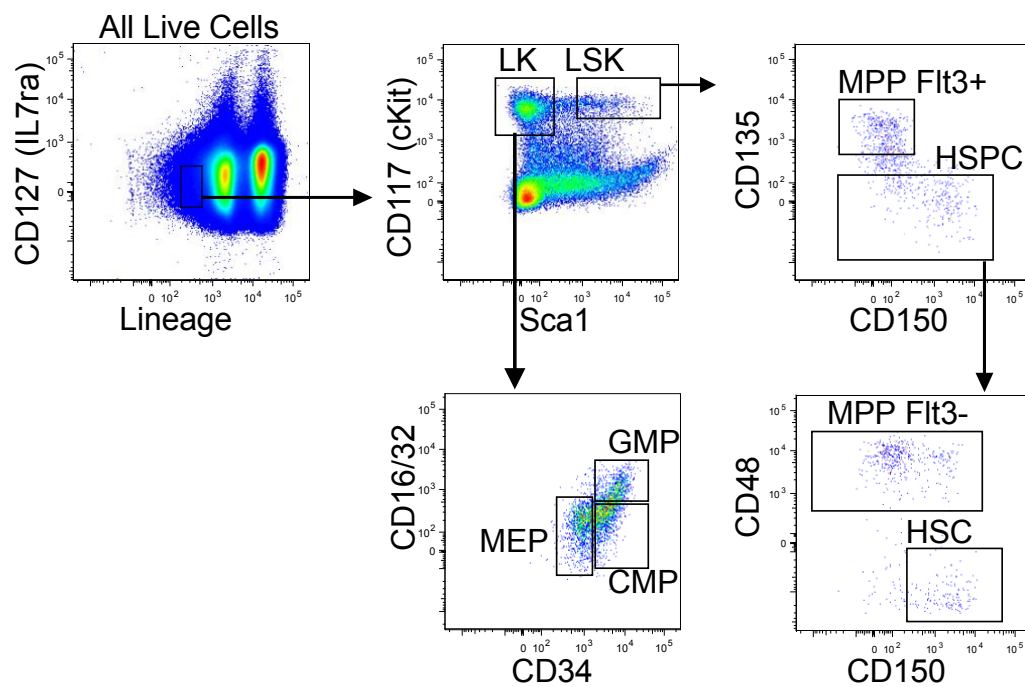
Supplementary Figure 3



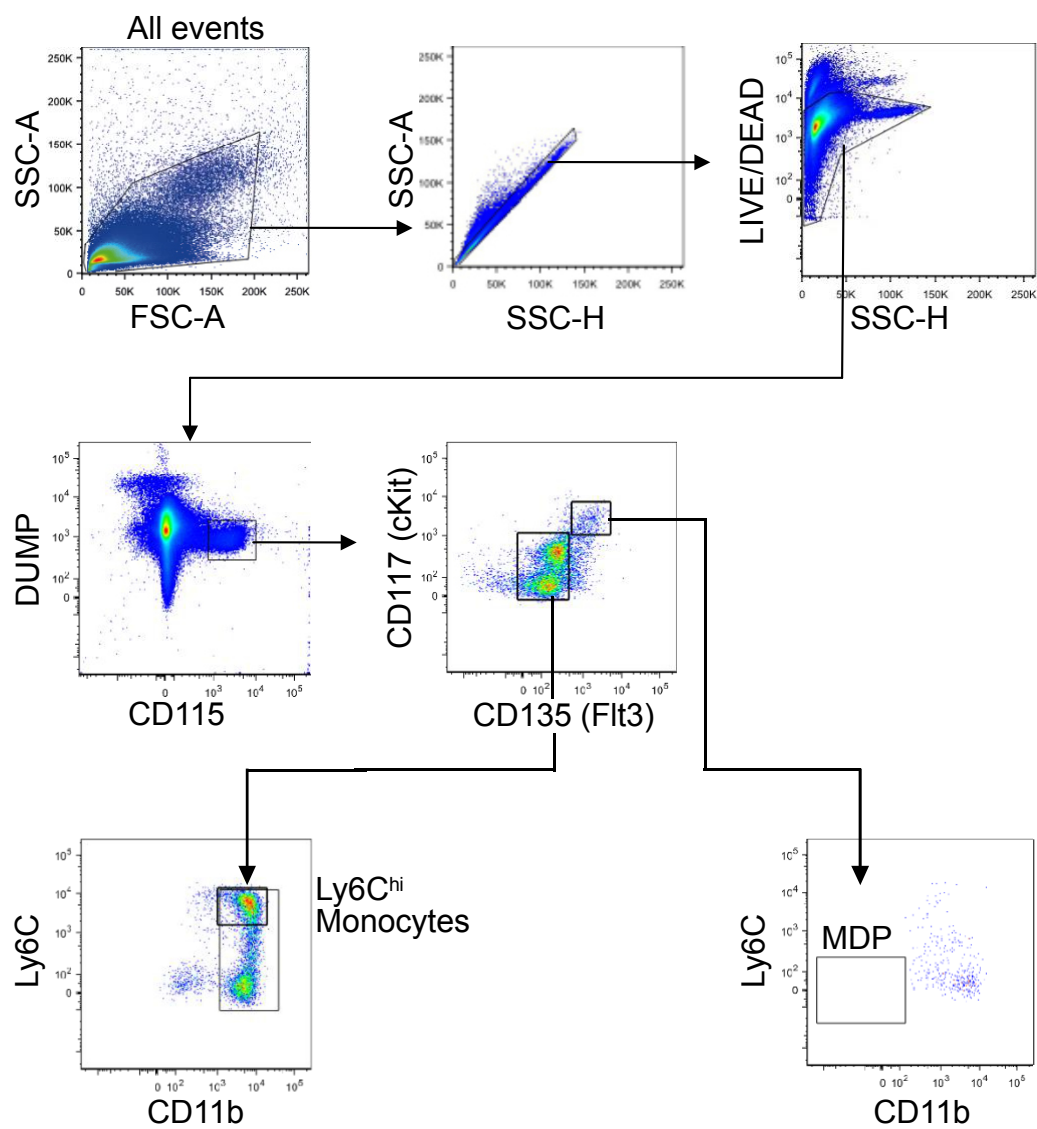
Supplementary Figure 4



Supplementary Figure 5

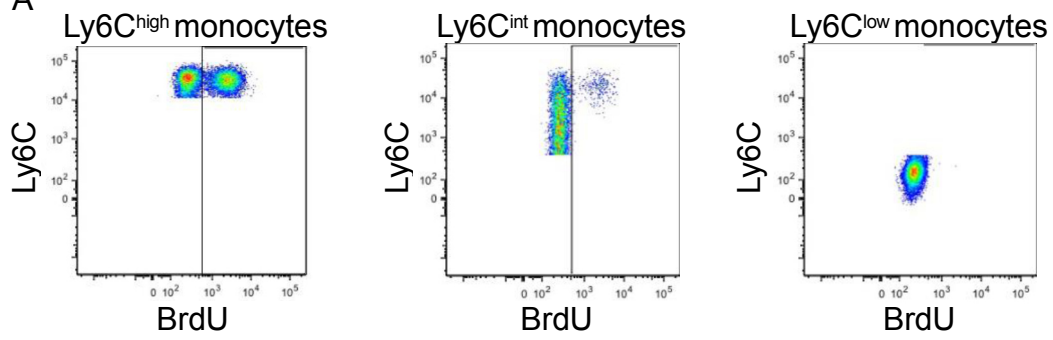


Supplementary Figure 6

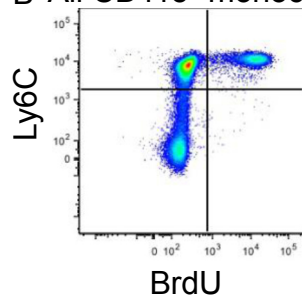


Supplementary Figure 7

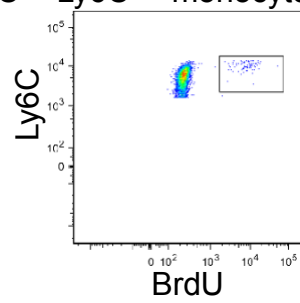
A



B All CD115⁺ monocytes



C Ly6C^{high} monocytes



Supplementary Figure 8

