

1 **Title: The giant Mimivirus 1.2 Mb genome is elegantly organized into a 30 nm helical**
2 **protein shield**

3 **Authors:** Alejandro Villalta^{1†}, Alain Schmitt^{1†}, Leandro F. Estrozi^{2†}, Emmanuelle R. J.
4 Quemin^{3#}, Jean-Marie Alempic¹, Audrey Lartigue¹, Vojtěch Pražák^{3,4}, Lucid Belmudes⁵,
5 Daven Vasishtan^{3,4}, Agathe M. G. Colmant¹, Flora A. Honoré¹, Yohann Couté⁵, Kay
6 Grünewald^{3,4}, Chantal Abergel^{1*}

7 **Affiliations:**

8 ¹Aix–Marseille University, Centre National de la Recherche Scientifique, Information
9 Génomique & Structurale, Unité Mixte de Recherche 7256 (Institut de Microbiologie de
10 la Méditerranée, FR3479, IM2B), 13288 Marseille Cedex 9, France.

11 ²Univ. Grenoble Alpes, CNRS, CEA, Institut de Biologie Structurale (IBS), 38000
12 Grenoble, France.

13 ³Centre for Structural Systems Biology, Leibniz Institute for Experimental Virology
14 (HPI), University of Hamburg, D-22607 Hamburg, Germany.

15 ⁴Division of Structural Biology, Wellcome Centre for Human Genetics, University of
16 Oxford, Oxford OX3 7BN, United Kingdom.

17 ⁵Univ. Grenoble Alpes, CEA, INSERM, IRIG, BGE, 38000 Grenoble, France

18 *Corresponding author. Email: Chantal.Abergel@igs.cnrs-mrs.fr

19 †These authors contributed equally to the work

20 # present address: Department of Virology, Institute for Integrative Biology of the Cell
21 (I2BC), Centre National de la Recherche Scientifique UMR9198, 1, avenue de la Ter-
22 rasse, 91198 Gif-sur-Yvette Cedex, France.

23 **One-Sentence Summary:** Mimivirus genome organization in the icosahedral virion.

24 **Subject Area:** Virology, Cryo-electron microscopy

25 **Keywords:** Mimivirus, giant virus, dsDNA, viral genome organization, genomic fiber, cryo-
26 EM, cryo-ET, helical reconstruction, proteomics.

27

28 **Abstract**

29 Mimivirus is the prototype of the *Mimiviridae* family of giant dsDNA viruses. Little is known
30 about the organization of the 1.2 Mb genome inside the membrane-limited nucleoid filling the
31 ~0.5 µm icosahedral capsids. Cryo-electron microscopy, cryo-electron tomography and
32 proteomics revealed that it is encased into a ~30 nm diameter helical protein shell surprisingly
33 composed of two GMC-type oxidoreductases, which also form the glycosylated fibrils
34 decorating the capsid. The genome is arranged in 5- or 6-start left-handed super-helices, with
35 each DNA-strand lining the central channel. This luminal channel of the nucleoprotein fiber is
36 wide enough to accommodate oxidative stress proteins and RNA polymerase subunits
37 identified by proteomics. Such elegant supramolecular organization would represent a
38 remarkable evolutionary strategy for packaging and protecting the genome, in a state ready
39 for immediate transcription upon unwinding in the host cytoplasm. The parsimonious use of
40 the same protein in two unrelated substructures of the virion is unexpected for a giant virus
41 with thousand genes at its disposal.

42

43 Introduction

44 Giant viruses were discovered with the isolation of Mimivirus from *Acanthamoeba*
45 species (1, 2). These viruses now represent a highly diverse group of dsDNA viruses
46 infecting unicellular eukaryotes (3) which play important roles in the environment (4–6).
47 They also challenge the canonical definitions of viruses (7, 8) as they can encode central
48 translation components (2, 9) as well as a complete glycosylation machinery (10, 11)
49 among other unique features.

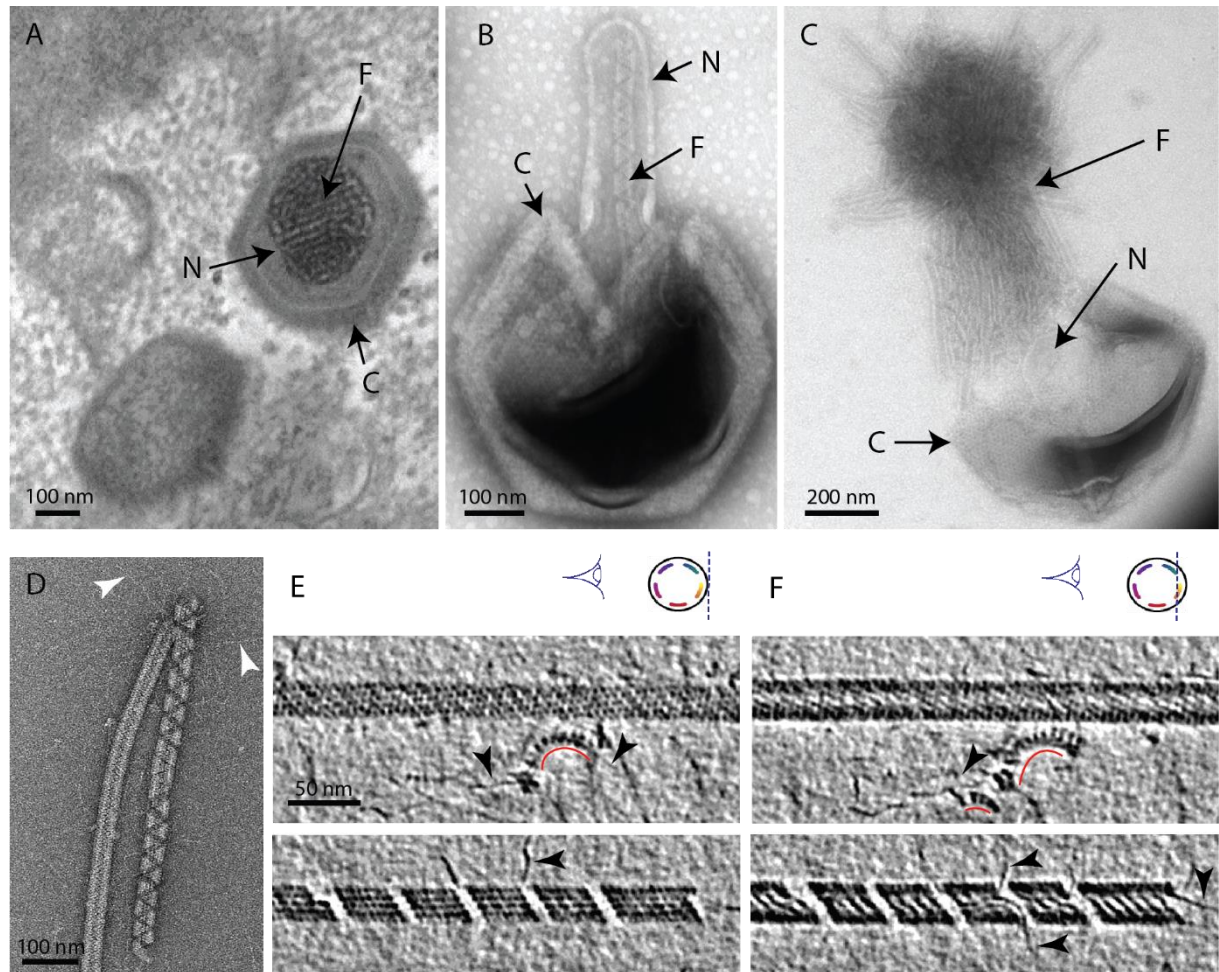
50 Mimivirus has been the most extensively studied giant virus over the years (12). The
51 virions are 0.75 μm wide and consist of icosahedral capsids of 0.45 μm diameter
52 surrounded by a dense layer of radially arranged fibrils (2). Structural analyses of the
53 virions have provided some insights into the capsid structure (13–17) but given the size of
54 the icosahedral particles (and hence the sample thickness), accessing the internal
55 organization of the core of the virions remains challenging. Consequently, little is known
56 about the packaging of the 1.2 Mb dsDNA genome (18). Inside the capsids, a lipid
57 membrane delineates an internal compartment (~340 nm in diameter, Fig 1A, Fig. S1A),
58 referred to as the nucleoid, which contains the viral genome, together with all proteins
59 necessary to initiate the replicative cycle within the host cytoplasm (17, 19–21).
60 *Acanthamoeba* cells engulf Mimivirus particles, fooled by their bacteria-like size and the
61 heavily glycosylated decorating fibrils (1, 2, 11). Once in the phagosome, the Stargate
62 portal located at one specific vertex of the icosahedron opens up (22), enabling the viral
63 membrane to fuse with that of the host vacuole to deliver the nucleoid into the host
64 cytoplasm (17, 20). EM studies have shown that next the nucleoid gradually loses its
65 electron dense appearance, transcription begins and the early viral factory is formed (21,
66 23, 24). Previous Atomic Force Microscopy (AFM) studies of the Mimivirus infectious
67 cycle suggested that the DNA forms a highly condensed nucleoprotein complex enclosed
68 within the nucleoid (13). Here we show that opening of the large icosahedral capsid *in*
69 *vitro* led to the release of rod-shaped structures of about 30 nm width. These structures
70 were further purified and the various conformations characterized using cryo-electron
71 microscopy (cryo-EM), tomography and MS-based proteomics.

72

73 Results

74 Capsid opening induces the release of a ~ 30 nm-wide rod-shaped structure that 75 contains the dsDNA genome

76 We developed an *in vitro* protocol for particle opening that led to the release of ~ 30 nm-
77 wide rod-shaped fibers of several microns in length (Fig. 1, Fig. S1). We coined this
78 structure the Mimivirus genomic fiber. Complete expulsion of the opened nucleoid
79 content resulted in the observation of bundled fibers resembling a “ball of yarn” (13) (Fig.
80 1C,). The used capsid opening procedure involves limited proteolysis and avoids harsh
81 conditions, as we found that the structure becomes completely denatured by heat (95°C)
82 and is also sensitive to acidic treatment, thus preventing its detection in such conditions
83 (17). Various conformations of the genomic fiber were observed, sometimes even on a
84 same fiber (Fig. 1D), ranging from the most compact rod-shaped structures (Fig. 1D (left),
85 E-F (top)) to more relaxed structures where DNA strands begin to dissociate (Fig. 1D
86 (right), E-F (bottom)). After optimizing the *in vitro* extraction on different strains of
87 group-A Mimiviruses, we focused on an isolate from La Réunion Island (Mimivirus
88 reunion), as more capsids were opened by our protocol, leading to higher yields of
89 genomic fibers that were subsequently purified on sucrose gradient. All opened capsids
90 released genomic fibers (Fig. 1C, Fig. S1B).



91
 92 **Figure 1: The Mimivirus genomic fiber** A] Micrograph of an ultrathin section of resin-embedded infected
 93 cells showing the DNA tightly packed inside Mimivirus capsids (C) with electron dense material inside the
 94 nucleoid (N). The string-like features, most likely enhanced by the dehydration caused by the fixation and
 95 embedding protocol, correspond to the genomic fiber (F) packed into the nucleoid. B] Micrograph of
 96 negative stained Mimivirus capsid (C) opened *in vitro* with the genomic fiber (F) still being encased into the
 97 membrane limited nucleoid (N). C] Multiple strands of the flexible genomic fiber (F) are released from the
 98 capsid (C) upon proteolytic treatment. D] Micrograph of negative stained purified Mimivirus genomic fibers
 99 showing two conformations (the right fiber resembling the one in [B] and free DNA strands (white
 100 arrowheads). E] Slices through two electron cryo tomograms of the isolated helical protein shell of the
 101 purified genomic fibers in compact (top) or relaxed conformation (bottom) in the process of losing one
 102 protein strand (Fig. S11, Tomo. S1 & S4). F] Different slices through the two tomograms shown in [E]
 103 reveal DNA strands lining the helical protein shell of the purified genomic fibers in compact (top) or relaxed
 104 conformation (bottom). Examples of DNA strands extending out at the breaking points of the genomic fiber
 105 are marked by black arrowheads. Note in the top panel, individual DNA strands coated by proteins (red arc).
 106 The slicing planes at which the Mimivirus genomic fibers were viewed are indicated on diagrams on the top
 107 right corner as blue dashed lines and the internal colored segments correspond to DNA strands lining the
 108 protein shell. The thickness of the tomographic slices is 1.1 nm and the distance between tomographic slices
 109 in panels [E] and [F] is 4.4 nm. Scale bars as indicated.

110 The first confirmation of the presence of DNA in the genomic fiber was obtained by
 111 agarose gel electrophoresis (Fig. S2). Electron cryo microscopy (cryo-EM) bubblegram
 112 analysis (25, 26) gave a further indication that the nucleic acid is located in the fiber
 113 lumen. Alike other nucleoprotein complexes, fibers are expected to be more susceptible to
 114 radiation damage than pure proteinaceous structures. Surprisingly, the specimen could
 115 sustain higher electron irradiation before the appearance of bubbles compared to other
 116 studies (27): 600 e-/Å² for relaxed helices and up to 900 e-/Å² for long compact ones,
 117 while no bubbles could be detected in unfolded ribbons (Fig. S3). For comparison,

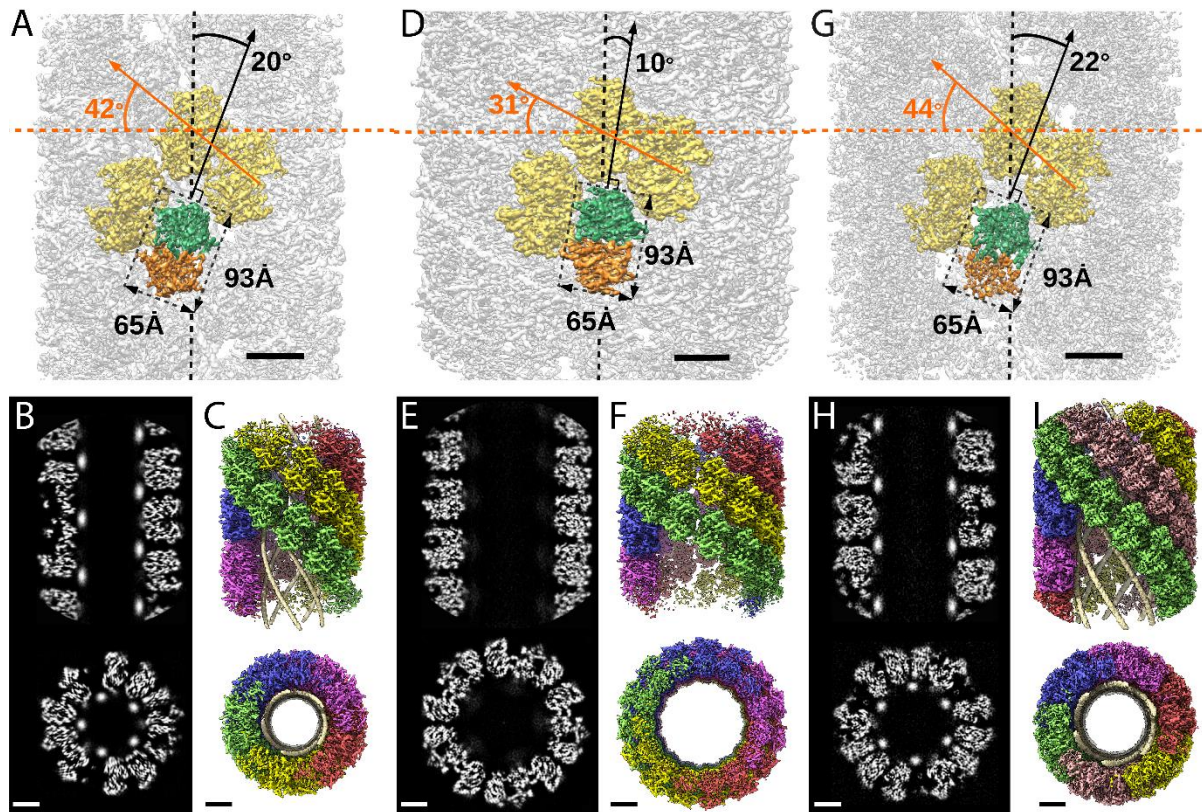
118 bacteriophage capsids containing free DNA, i.e. not in the form of nucleoproteins, show
119 bubbling for doses of $\sim 30\text{-}40\text{ e}^{-}/\text{\AA}^2$ (27).

120 **Cryo-EM single particle analysis of the different compaction states of the Mimivirus** 121 **genomic fiber**

122 In order to shed light on the Mimivirus genome packaging strategy and to determine the
123 structure of the purified genomic fibers, we performed cryo-EM single-particle analysis.
124 The different conformations of the genomic fiber initially observed by negative staining
125 (Fig. 1) and cryo-EM resulted in a highly heterogeneous dataset for single-particle
126 analysis. In order to separate different conformations, *in silico* sorting through 2D
127 classification (using Relion (28, 29)) was performed. Next, we carried out cluster analysis
128 relying on the widths of the helical segments and correlations (real and reciprocal spaces)
129 between the experimental 2D class patterns (Figs. S4 & S5). Three independent clusters
130 (C1) could be distinguished, corresponding to the compact (C11), intermediate (C12) and
131 relaxed (C13) fiber conformations (Fig. S5) with the latter being the widest. For each
132 cluster, we determined their helical symmetry parameters by image power spectra
133 analyses and performed structure determination and refinement (Fig. 2, Fig. S6-8).

134 For both C11a and C13a conformations, after 3D-refinement, we obtained helical structures
135 of 3.7 Å resolution (FSC threshold 0.5, masked), corresponding to 5-start left-handed
136 helices made of a ~ 8 nm-thick proteinaceous external shell (Figs. S6 and S7). For the most
137 compact conformation (C11a) 5 dsDNA strands were lining the interior of the protein shell
138 leaving a ~ 9 nm wide central channel (Fig. 2-3, Table S1). The DNA strands appear as
139 curved cylinders in the helical structure, the characteristic shape of the DNA (minor and
140 major groove) becoming only visible after focused refinement of a single DNA strand
141 (Fig. 3, Fig. S9-S10). In the relaxed subcluster C13a, the DNA strands at the interface to
142 the ~ 17 nm-wide central channel are not clearly recognizable (Fig. 2, Table S1 & Fig. S7),
143 most likely because they are at least partially detached inside the broken expanded fiber.
144 The breaks after relaxation of the helix might be the result of the extraction and
145 purification treatment, while DNA will remain in the central channel, at least in the early
146 phase of *Acanthamoeba* infection.

147 Finally, the 4 Å resolution C12 map obtained after 3D refinement (Fig. S8) corresponds to
148 a 6-start left-handed helix made of a ~ 8 nm-thick proteinaceous external shell, with 6
149 dsDNA strands lining the shell interior and leaving a ~ 12 nm wide inner channel (Fig. 2,
150 Table S1).



151

152 **Figure 2: Structures of the Mimivirus genomic fiber for C11a [A-C], C13a [D-F], and C12 [G-I]:** A, D,
 153 G] Electron microscopy (EM) maps of C11a (A) and C13a (D) are shown with each monomer of one GMC-
 154 oxidoreductase dimer colored in green and orange and 3 adjacent dimers in yellow, to indicate the large
 155 conformational change taking place between the two fiber states. The transition from C11a to C13a (5-start
 156 helix) corresponds to a rotation of each individual unit (corresponding to a GMC- oxidoreductase dimer) by
 157 $\sim -10^\circ$ relative to the fiber longitudinal axis and a change in the steepness of the helical rise by $\sim -11^\circ$. Scale
 158 bars 50 Å. Compared to C11a, the C12 6-start helix (G) shows a difference of $\sim 2^\circ$ relative to the fiber
 159 longitudinal axis and $\sim 2^\circ$ in the steepness of the helical rise. Scale bars 50 Å. B, E, H] Cross-sectional
 160 (bottom) and longitudinal (top) sections through the middle of final C11a (B) C13a (E) and C12 (H) EM
 161 maps. Scale bars 50 Å. C, F, I] Longitudinal (top) and orthogonal (bottom) views of final C11a (C) and C13a
 162 (F) and C12 (I) EM maps color-coded according to each start of the 5-start helix. Densities for some
 163 asymmetric units in the front have been removed on the side view map to show the 5 DNA strands lining the
 164 protein shell interior. Scale bars 50 Å.

165

166 **The most abundant proteins in the genomic fiber are GMC-oxidoreductases, the**

167

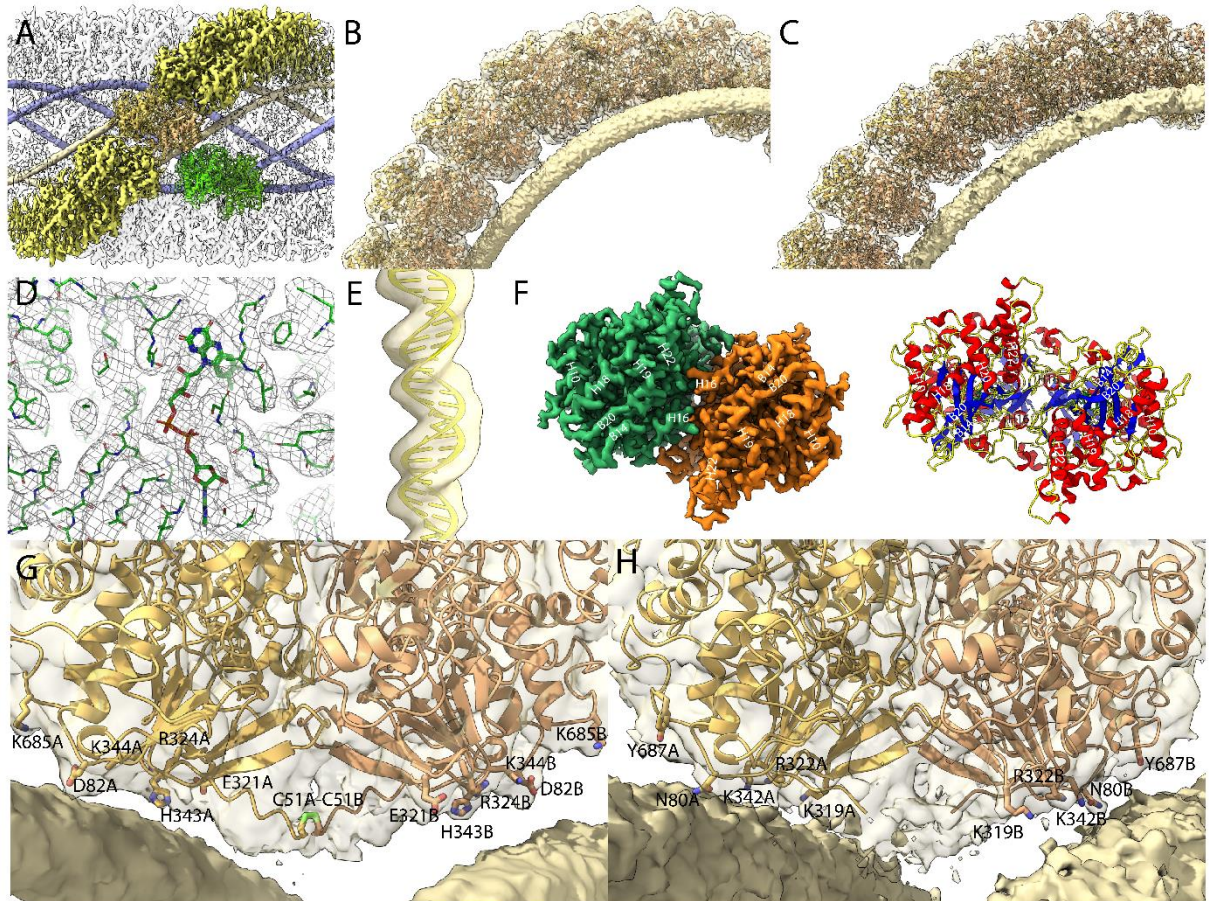
168 **same that compose the fibrils decorating Mimivirus capsid**

169 MS-based proteomic analyses performed on three biological replicates identified two
 170 GMC-oxidoreductases as the main components of the purified genomic fiber (qu_946 and
 171 qu_143 in Mimivirus reunion corresponding to L894/93 and R135 respectively in
 172 Mimivirus prototype) (Table S2). The available Mimivirus R135 GMC-oxidoreductase
 173 dimeric structure (30) (PDB 4Z24, lacking the 50 amino acid long cysteine-rich N-
 174 terminal domain) was fitted into the EM maps (Figs. 2-3). This is quite unexpected, since
 175 GMC-oxidoreductases are already known to compose the fibrils surrounding Mimivirus
 176 capsids (11, 31). Notably, the proteomic analyses provided different sequence coverages
 177 for the GMC-oxidoreductases depending on whether samples were virions or the purified
 178 genomic fiber preparations, with substantial under-representation of the N-terminal
 179 domain in the genomic fiber (Fig. S12). Accordingly, the maturation of the GMC-
 oxidoreductases involved in genome packaging must be mediated by one of the many
 proteases encoded by the virus.

180

181 Analysis of the genomic fiber structure

182 The EM maps and FSC curves of C11a are shown in Fig. S6. An additional step of
183 refinement focused on the asymmetric unit further improved the local resolution to 3.3 Å
184 as indicated by the corresponding FSC (Figs. 3 and S6). After fitting the most abundant
185 GMC-oxidoreductase qu_946 (SWISS-MODEL model (32)) in the final map of C11a, five
186 additional N-terminal residues in each monomer were manually built using the
187 uninterpreted density available. This strikingly brings the cysteines of each monomer
188 (C51 in qu_946) close enough to allow a disulfide bridge, directly after the 50 amino acids
189 domain not covered in the proteomic analysis of the genomic fiber (Fig. 3G, Fig. S12).
190 The N-terminal chain, being more disordered than the rest of the structure, is absent from
191 the focused refined map, suggesting that a break of the disulfide bridge could be involved
192 in the observed unwinding process. Models of the three helical assemblies and asymmetric
193 unit were further refined using the real-space refinement program in PHENIX 1.18.2 (33).
194 In the 3.3 Å resolution map of the asymmetric unit, most side chains and notably the FAD
195 co-factor are accommodated by density suggesting that the oxidoreductase enzyme could
196 be active (Fig. 3D). Density that can be attributed to the FAD cofactor is also present in
197 the C12 and C13a maps. The atomic models of C11a and C13a dimers are superimposable
198 with a core RMSD of 0.68 Å based on C α atoms.



199 **Figure 3: Maps of the compact (C11a and C12) genomic fiber structures:** A] C11a EM map
200 corresponding to the protein shell prior focused refinement is shown as a transparent surface and the 5 DNA
201 strands as solid surface. One protein dimer strand is shown yellow except for one asymmetric unit
202 (transparent yellow) to illustrate the dimer fit. The position of a second dimer (green) from the adjacent
203 dimer strand is shown to emphasize that the DNA strand (gold) is lining the interface between two dimers.
204 B, C] Cartoon representation of GMC-oxidoreductase qu_946 dimers fitted into one of the C11a 5-start helix
205 strands in the 3.7 Å resolution map (B) and GMC-oxidoreductase.
206

207 143 dimers fitted into one of the C12 6-start helix strands in the respective 4.0 Å resolution map (C). The
208 maps are shown at a threshold highlighting the periodicity of contacts between the dsDNA and the protein
209 shell. D] Zoom into the 3.3 Å resolution focused refined C11a map illustrating the fit of the side chains and
210 the FAD ligand. E] Cartoon representation of the DNA fitted in the focused refined DNA only map (Fig.
211 S10). F] Focused refined C11a map colored by monomer, next to a cartoon representation of the qu_946
212 dimer (α -helices in red, β -strands in blue and coils in yellow). Secondary structure elements are annotated in
213 both representations (H: helix, B: beta-strand). G, H] Cartoon representation of qu_946 (G) and qu_143 (H)
214 fitted into their respective cryo-EM maps highlighting the interacting residues (given as stick models)
215 between each monomer and one dsDNA strand. The isosurface threshold chosen allows visualization of
216 density for the manually built N-terminal residues including the residues C51 (stick model) of two
217 neighboring monomers that form a terminal disulfide bridge.

218 Inspection of individual genomic fibers in the tomograms confirmed the co-existence of
219 both 5- and 6-start left-handed helices containing DNA (Fig. S11 & Video S1, Tomo. S1).
220 Further, some intermediate and relaxed structures were also observed in which the DNA
221 segments appeared detached from the protein shell and sometimes completely absent from
222 the central channel of the broken fibers. Both GMC-oxidoreductases (qu_946 and qu_143)
223 can be fitted in the 5- and 6-start maps.

224 In relaxed or broken fibers, large electron dense structures that might correspond to
225 proteins inside the lumen were sometimes visible (Fig. S11C & E & Tomo. S3) as well as
226 dissociating DNA fragments, either in the central channel (Fig. S11B & Tomo. S2) or at
227 the breakage points of the fibers in its periphery (Fig. S11D & Tomo. S4). Densities
228 corresponding to the dimer subunits composing the protein shell were also commonly
229 observed on dissociated DNA strands (Fig. 1E-F, Fig. S11 and Tomo. S1-S4).

230 In the C11a and C12 helices, the monomers in each dimer are interacting with two different
231 dsDNA strands. As a result, the DNA strands are interspersed between two dimers, each
232 also corresponding to a different strand of the protein shell helix (Fig. 3). Based on the
233 periodic contacts between protein shell and DNA strands, these interactions might
234 involve, in the case of the C11a helix, one aspartate (D82 relative to the N-terminal
235 Methionine in qu_946), one glutamate (E321), three lysines (K84, K344, K685), one
236 arginine (R324) and a histidine (H343) or one asparagine (N80), two lysines (K319,
237 K342), one arginine (R322) and one tyrosine (Y687), in the case of the C12 helix
238 (Fig. 3G,H).

239 Despite the conformational heterogeneity and the flexibility of the rod-shaped structure,
240 we were able to build three atomic models of the Mimivirus genomic fiber, in compact (5-
241 and 6-start) and relaxed (5-start) states. Higher resolution data would still needed to
242 determine the precise structure of the dsDNA corresponding to the viral genome (Fig. 3B,
243 C, E), however, the lower resolution for this part of the map even in focused refinement
244 runs (Fig. 3E) might also mean that the DNA does not always bind in the same
245 orientation.

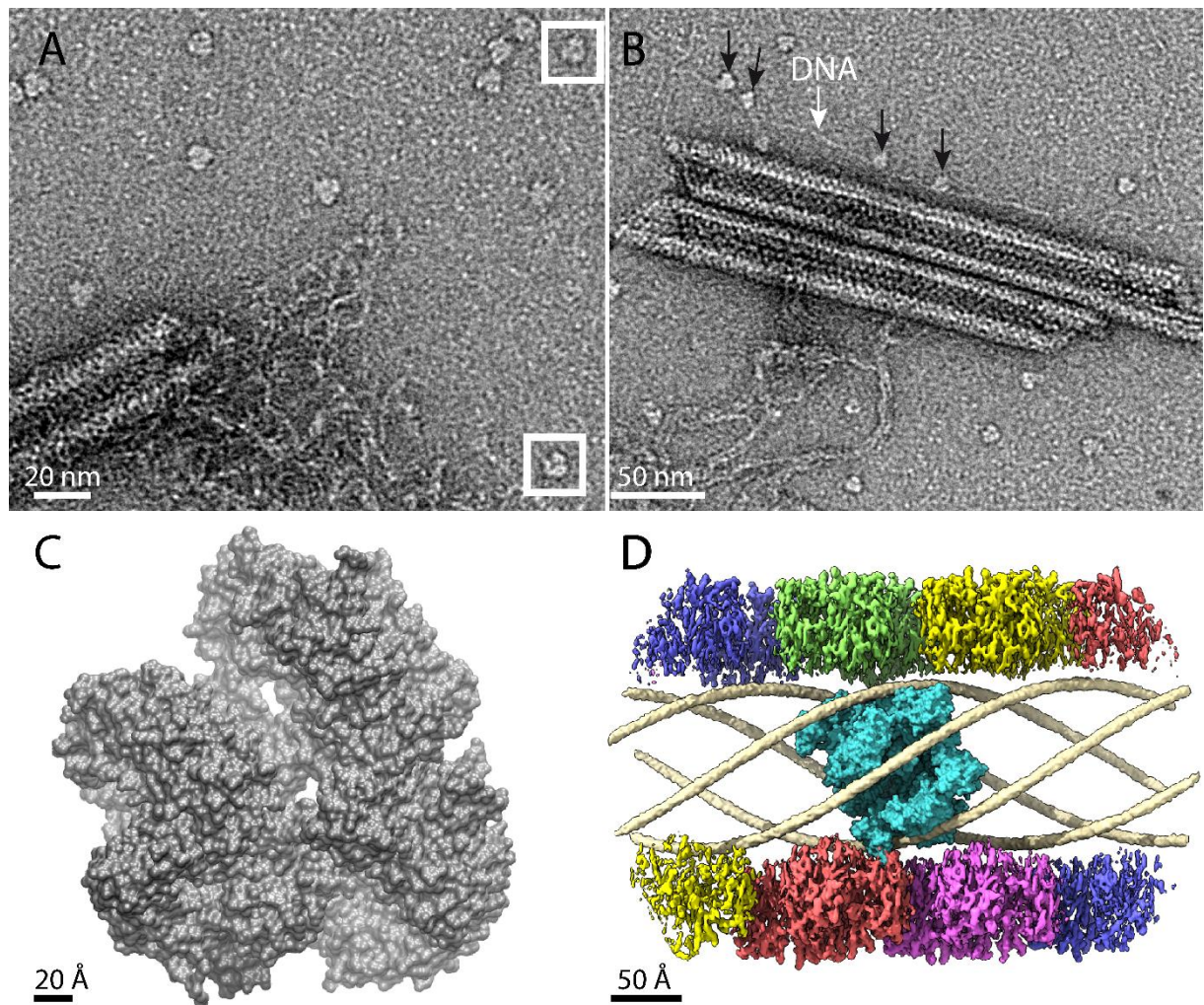
246 **Rough estimation of genome compaction to fit into the nucleoid**

247 Since there is a mixture of 5 and 6 strands of DNA in the genomic fiber, this could
248 correspond to 5 or 6 genomes per fiber or to a single folded genome. Assuming that the
249 length of DNA in B-form is ~ 34 Å for 10 bp, the Mimivirus linear genome of 1.2×10^6 bp
250 would extend over ~ 400 μm and occupy a volume of $1.3 \times 10^6 \text{ nm}^3$ (~ 300 μm and $\sim 1 \times 10^6$
251 nm^3 if in A-form) (34). The volume of the nucleoid (19) (~ 340 nm in diameter) is
252 approximately $2.1 \times 10^7 \text{ nm}^3$ and could accommodate over 12 copies of viral genomes in a
253 naked state, but only 40 μm of the ~ 30 nm wide flexible genomic fiber. Obviously, the
254 Mimivirus genome cannot be simply arranged linearly in the genomic fiber and must
255 undergo further compaction to accommodate the 1.2 Mb genome in a ~ 40 μm long

256 genomic fiber. As a result, the Mimivirus genome is probably organized as an helical shell
257 internally lined by folded DNA strands, surprisingly resembling the archaeal APBV1
258 virion structure (35).

259 **Additional proteins, including RNA polymerase subunits, are enriched in the**
260 **genomic fiber**

261 The proteomic analysis of fiber preparations revealed the presence of additional proteins
262 including several RNA polymerase subunits: Rpb1 and Rpb2 (qu_530/532 and
263 qu_261/259/257/255), Rpb3/11 (qu_493), Rpb5 (qu_245), RpbN (qu_379) and Rpb9
264 (qu_219), in addition to a kinesin (qu_313), a regulator of chromosome condensation
265 (qu_366), a helicase (qu_572), to be possibly associated with the genome (Table S2). In
266 addition to the two GMC-oxidoreductases, at least three oxidative stress proteins were
267 also identified together with hypothetical proteins (Table S2). As expected, the core
268 protein (qu_431) composing the nucleoid and the major capsid proteins (MCP, qu_446)
269 were significantly decreased in the genomic fiber proteome compared to intact virions. In
270 fact, qu_431 and qu_446 represent respectively 4.5% and 9.4% of the total protein
271 abundance in virions whereas they only account for 0.4% and 0.7% of the total protein
272 abundance in the genomic fiber, suggesting that they could be contaminants in this
273 preparation. On the contrary, we calculated enrichment factors of more than five hundred
274 (qu_946) and twenty-six (qu_143) in the genomic fiber samples compared to the intact
275 virion. Finally, the most abundant RNA polymerase subunit (qu_245) is increased by a
276 factor of eight in the genomic fiber compared to intact virion (if the six different subunits
277 identified are used, the global enrichment is seven-fold). Furthermore, upon inspection of
278 the negative staining micrographs, macromolecules strikingly resembling the
279 characteristic structure of the poxviruses RNA polymerase (36) were frequently observed
280 scattered around the unwinding fiber and sometimes sitting on DNA strands near broken
281 fibers (Fig. 4). Together with the tomograms showing large electron dense structures in
282 the lumen, some RNA polymerase units could occupy the center of the genomic fiber.



283

284 **Figure 4: RNA polymerase could be associated to the genomic fiber.** A] Micrograph of negative stained
285 fiber with released DNA still being connected to a relaxed and broken fiber and adjacent scattered
286 macromolecular complexes that might resemble RNA polymerases. B] Strikingly, some of them (black
287 arrows) appear to sit on a DNA strand (white arrow). C] Surface representation of the vaccinia virus RNA
288 polymerase (6RIC and 6RUI (36)) structure being equivalent to the subunits identified by our MS-based
289 proteomics of purified Mimivirus genomic fibers. D] Surface representation of RNA polymerase subunits
290 from vaccinia virus (in cyan), manually docked into the 5-start helical C11a map. Each strand of the protein
291 shell is represented in specific color and the dsDNA strands map is shown in pale gold.

292

293

Discussion

294 Several DNA compaction solutions have been described. For instance, the DNA of
295 filamentous viruses infecting archaea is wrapped by proteins to form a ribbon which in
296 turn folds into a helical rod forming a cavity in its lumen (37, 38). In contrast, the
297 chromatin of cellular eukaryotes consists of DNA wrapped around histone complexes
298 (39). It was recently shown that the virally encoded histone doublets of the
299 *Marseilleviridae* can form nucleosomes (40, 41) and such organization would be
300 consistent with previous evolutionary hypotheses linking giant DNA viruses with the
301 emergence of the eukaryotic nucleus (42–46). Herpesviruses (47, 48), bacteriophages (49,
302 50) and APBV1 archaeal virus (35) package their dsDNA genome as naked helices or
303 coils. APBV1 capsid structure appears strikingly similar to the Mimivirus genomic fiber
304 but Mimivirus, further bundles its flexible genomic fiber as a ball of yarn into the

305 nucleoid, itself encased in the large icosahedral capsids. The structure of the Mimivirus
306 genomic fiber described herein supports a complex assembly process where the DNA
307 must be folded into 5 or 6 strands prior to or concomitant with packaging, a step that may
308 involve the repeat containing regulator of chromosome condensation (qu_366) identified
309 in the proteomic analysis of the genomic fiber. The proteinaceous shell, *via* contacting
310 residues between the dsDNA and the GMC-oxidoreductases, would guide the folding of
311 the dsDNA strands into the structure prior loading into the nucleoid. The lumen of the
312 fiber being large enough to accommodate the Mimivirus RNA polymerase, we
313 hypothesize that it could be sitting on the highly conserved promoter sequence of early
314 genes (51). This central position would support the involvement of the RNA polymerase
315 in genome packaging into the nucleoid and could determine the channel width *via* its
316 anchoring on the genome (Fig. 4D). According to this scenario, the available space
317 (although tight) for the RNA polymerase inside the genomic fiber lumen suggests it could
318 be sterically locked inside the compact form of the genomic fiber and could start moving
319 and transcribing upon helix relaxation, initiating the replicative cycle and the
320 establishment of the cytoplasmic viral factory. The genome and the transcription
321 machinery would thus be compacted together into a proteinaceous shield, ready for
322 transcription upon relaxation (Video S3). This organization would represent a remarkable
323 evolutionary strategy for packaging and protecting the viral genome, in a state ready for
324 immediate transcription upon unwinding in the host cytoplasm. This is conceptually
325 reminiscent of icosahedral and filamentous dsRNA viruses which pack and protect their
326 genomes together with the replicative RNA polymerase into an inner core (52–54). As a
327 result, replication and transcription take place within the protein shield and viral genomes
328 remain protected during their entire infectious cycle. In the case of dsDNA viruses
329 however, the double helix must additionally open up to allow transcription to proceed,
330 possibly involving the helicase identified in our proteomic study (Table S2). Finally, in
331 addition to their structural roles, the FAD containing GMC-oxidoreductases making the
332 proteinaceous shield, together with other oxidative stress proteins (Table S2), could
333 alleviate the oxidative stress to which the virions are exposed while entering the cell by
334 phagocytosis. The complexity of the flexible genomic fiber, with various relaxation states
335 requires additional work aiming to stabilize this macromolecular complex in additional
336 intermediate states in order to determine the contributions of the various proteins
337 identified and ultimately to progress towards structures of the process inside host cells in
338 the course of Mimivirus infection.

339 Mimivirus virion thus appears as a Russian doll, with its icosahedral capsids covered with
340 heavily glycosylated fibrils, two internal membranes, one lining the capsid shell, the other
341 encasing the nucleoid, in which the genomic fiber is finally folded. To our knowledge, the
342 structure of the genomic fiber used by Mimivirus to package and protect its genome in the
343 nucleoid represents the first description of the genome organization of a giant virus. Since
344 the genomic fiber appears to be expelled from the nucleoid as a flexible and subsequently
345 straight structure starting decompaction upon release, we suspect that an active, energy-
346 dependent, process is required to bundle it into the nucleoid during virion assembly. Such
347 an efficient structure is most likely shared by other members of the Mimiviridae family
348 infecting *Acanthamoeba* and could be used by other dsDNA viruses relying on
349 exclusively cytoplasmic replication like poxviruses to immediately express early genes
350 upon entry into the infected cell (55, 56). Finally, the parsimonious use of moonlighting
351 GMC-oxidoreductases playing a central role in two functionally unrelated substructures of
352 the Mimivirus particle - i) as a component of the heavily glycosylated peripheral fibril
353 layer and ii) as a proteinaceous shield to package the dsDNA into the genomic fibers

354 questions the evolutionary incentive leading to such an organization for a virus encoding
355 close to a thousand proteins.

356

357

358 **Materials and Methods**

359 *Nucleoid extraction*

360 Mimivirus reunion virions defibrillated, as described previously (11, 19), were centrifuged
361 at 10,000 x g for 10 min, resuspended in 40 mM TES pH 2 and incubated for 1h at 30°C
362 to extract the nucleoid from the opened capsids.

363 *Extraction and purification of the Mimivirus genomic fiber*

364 The genomic fiber was extracted from 12 mL of purified Mimivirus reunion virions at 1.5
365 x 10¹⁰ particles/mL, split into 12x1 mL samples processed in parallel. Trypsin (Sigma
366 T8003) in 40 mM Tris-HCl pH 7.5 buffer was added at a final concentration of 50 µg/mL
367 and the virus-enzyme mix was incubated for 2h at 30°C in a heating dry block (Grant Bio
368 PCH-1). DTT was then added at a final concentration of 10 mM and incubated at 30°C for
369 16h. Finally, 0.001% Triton X-100 was added to the mix and incubated for 4h at 30°C.
370 Each tube was vortexed for 20 s with 1.5 mm diameter stainless steel beads (CIMAP) to
371 separate the fibers from the viral particles and centrifuged at 5,000 x g for 15 min to pellet
372 the opened capsids. The supernatant was recovered, and the fibers were concentrated by
373 centrifugation at 15,000 x g for 4h at 4°C. Most of the supernatant was discarded leaving
374 12x~200 µL of concentrated fibers that were pooled and layered on top of ultracentrifuge
375 tubes of 4 mL (polypropylene centrifuge tubes, Beckman Coulter) containing a
376 discontinuous sucrose gradient (40%, 50%, 60%, 70% w/v in 40 mM Tris-HCl pH 7.5
377 buffer). The gradients were centrifuged at 200,000 x g for 16h at 4 °C. Since no visible
378 band was observed, successive 0.5 mL fractions were recovered from the bottom of the
379 tube, the first one supposedly corresponding to 70% sucrose. Each fraction was dialyzed
380 using 20 kDa Slide-A-Lyzers (ThermoFisher) against 40 mM Tris-HCl pH 7.5 to remove
381 the sucrose. These fractions were further concentrated by centrifugation at 15,000 x g, at
382 4°C for 4h and most of the supernatant was removed, leaving ~100 µL of sample at the
383 bottom of each tube. At each step of the extraction procedure the sample was imaged by
384 negative staining transmission electron microscopy (TEM) to assess the integrity of the
385 genomic fiber (Fig. S1). Each fraction of the gradient was finally controlled by negative
386 staining TEM. For proteomic analysis, an additional step of concentration was performed
387 by speedvac (Savant SPD131DDA, Thermo Scientific).

388 *Negative stain TEM*

389 300 mesh ultra-thin carbon-coated copper grids (Electron Microscopy Sciences, EMS)
390 were prepared for negative staining by adsorbing 4-7 µL of the sample for 3 min.,
391 followed by two washes with water before staining for 2 min in 2% uranyl acetate. The
392 grids were imaged either on a FEI Tecnai G2 microscope operated at 200 keV and
393 equipped with an Olympus Veleta 2k camera (IBDM microscopy platform, Marseille,
394 France); a FEI Tecnai G2 microscope operated at 200 keV and equipped with a Gatan
395 OneView camera (IMM, microscopy platform, France) or a FEI Talos L120c operated at
396 120 keV and equipped with a Ceta 16M camera (CSSB multi-user cryo-EM facility,
397 Germany, Fig. 1, Fig. S1).

398 *Agarose gel electrophoresis and DNA dosage to assess the presence of DNA into the* 399 *fiber*

400 Genomic DNA was extracted from 10^{10} virus particles using the PureLink™ Genomic
401 DNA mini kit (Invitrogen) according to the manufacturer's protocol. Purified genomic
402 fiber was obtained following the method described above. The purified fiber was treated
403 by adding proteinase K (PK) (Takara ST 0341) to 20 μ L of sample (200 ng as estimated
404 by dsDNA Qubit fluorometric quantification) at a final concentration of 1 mg/mL and
405 incubating the reaction mix at 55°C for 30 min. DNase treatment was done by adding
406 DNase (Sigma 10104159001) and $MgCl_2$ to a final concentration of 0.18 mg/mL and 5
407 mM, respectively, in 20 μ L of sample and incubated at 37°C for 30 min prior to PK
408 treatment. For RNase treatment, RNase (Sigma SLBW2866) was added to 20 μ L (200 ng)
409 of sample solution to a final concentration of 1 mg/mL and incubated at 37°C for 30 min
410 prior to PK treatment. All the samples were then loaded on a 1 % agarose gel and stained
411 with ethidium bromide after migration. The bands above the 20 kbp marker correspond to
412 the stacked dsDNA fragments of various lengths compatible with the negative staining
413 images of the broken fibers where long DNA fragment are still attached to the helical
414 structure. The Mimivirus purified genomic DNA used as a control migrates at the same
415 position (Fig. S2).

416 ***Cryo-EM bubblegram analysis***

417 Samples were prepared as described for single-particle analysis. Dose series were
418 acquired on a Titan Krios (Thermo Scientific) microscope operated at 300 keV and
419 equipped with a K3 direct electron detector and a GIF BioQuantum (Gatan) energy filter.
420 Micrographs were recorded using SerialEM (57) at a nominal magnification of 81,000x, a
421 pixel size of 1.09 Å and a rate of 15 e^- /pixel/s (Fig. S3 & Table S3). Dose series were
422 acquired by successive exposures of 6 s, resulting in an irradiation of 75 $e^-/\text{Å}^2$ per
423 exposure. Micrographs were acquired with 0.1 s frames and aligned in SerialEM (57). In a
424 typical bubblegram experiment, 12 to 15 successive exposures were acquired in an area of
425 interest with cumulative irradiations of 900 to 1,125 $e^-/\text{Å}^2$ total (Fig. S3).

426 ***Single-particle analysis by cryo-EM***

427 *Sample preparation*

428 For single-particle analysis, 3 μ L of the purified sample were applied to glow-discharged
429 Quantifoil R 2/1 Cu grids, blotted for 2 s using a Vitrobot Mk IV (Thermo Scientific) and
430 applying the following parameters: 4°C, 100% humidity, blotting force 0, and plunge
431 frozen in liquid ethane/propane cooled to liquid nitrogen temperature.

432 *Data acquisition*

433 Grids were imaged using a Titan Krios (Thermo Scientific) microscope operated at 300
434 keV and equipped with a K2 direct electron detector and a GIF BioQuantum energy filter
435 (Gatan). 7,656 movie frames were collected using the EPU software (Thermo Scientific)
436 at a nominal magnification of 130,000x with a pixel size of 1.09 Å and a defocus range
437 of -1 to -3 μ m. Micrographs were acquired using EPU (Thermo Scientific) with 8 s
438 exposure time, fractionated into 40 frames and 7.5 e^- /pixel/s (total fluence of
439 50.5 $e^-/\text{Å}^2$) (Table S3).

440 *2D classification and clustering of 2D classes*

441 All movie frames were aligned using MotionCor2 (58) and used for contrast transfer
442 function (CTF) estimation with CTFFIND-4.1 (59). Helical segments of the purified
443 genomic fibers, manually picked with Relion 3.0 (28, 29)(28, 29), were initially extracted
444 with different box sizes, 400 pixels for 3D reconstructions, 500 pixels for initial 2D
445 classifications and clustering and 700 pixels to estimate the initial values of the helical

446 parameters. Particles were subjected to reference-free 2D classification in Relion 3.1.0
447 (28, 29), where multiple conformations of the fiber were identified (Fig. S4, S5).

448 We then performed additional cluster analysis of the 194 initial 2D classes provided by
449 Relion (Fig. S4) to aim for more homogeneous clusters, eventually corresponding to
450 different states (Fig. S5). A custom 2-step clustering script was written in python with the
451 use of Numpy(60) and Scikit-learn (61) libraries. First, a few main clusters were identified
452 by applying a DBSCAN (62) clustering algorithm on the previously estimated fiber
453 external width values (W1). The widths values, estimated by adjusting a parameterized
454 cross-section model on each 2D stack, range from roughly 280 Å to 340 Å. The cross-
455 section model fitting process is based on adjusting a section profile (S) described in
456 Equation 1 on the longitudinally integrated 2D-class profile (Fig. S5A). The cross-section
457 model is composed of a positive cosine component, (parameterized by the center position
458 μ , its width σ_1 and amplitude a_1) associated with the fiber external shell, a negative cosine
459 component (parameterized by the center position μ , its width σ_2 and amplitude a_2)
460 associated with the central hollow lumen (W2), and a constant p_0 , accounting for the
461 background level, as

$$S(\mu, \sigma_1, a_1, \sigma_2, a_2, p_0, x) = a_1 \cos \frac{x - \mu}{\sigma_1} - a_2 \cos \frac{x - \mu}{\sigma_2} + p_0 \quad \text{Equation 1}$$

462 Then, as a second step, each main cluster was subdivided into several sub-clusters by
463 applying a KMEANS(63) clustering algorithm on a pairwise similarity matrix. This
464 similarity metric was based on a 2D image cross-correlation scheme, invariant to image
465 shifts, and mirroring (64). The number of sub-clusters was manually chosen by visual
466 inspection. For the most populated 2D classes corresponding to the most compact
467 conformations, the number of sub-clusters was small: n=2 sub-clusters, C11a and C11b,
468 and n=1 sub-cluster for the intermediate class, C12. However, the number of sub-clusters
469 was higher (n=5) for the relaxed conformation (C13 from green to purple in Fig. S5),
470 highlighting the overall heterogeneity of our dataset with compact, intermediate, relaxed
471 states and even loss of one protein strands (C13b) and unwound ribbons.

472 *Identification of candidate helical parameters*

473 Fourier transform analysis methods have been used to identify helical parameters
474 candidates (65–67) for the C11a, C12 and C13a clusters. For each cluster, we first estimated
475 the repeat distance by applying the method consisting in a longitudinal autocorrelation
476 with a windowed segment of the real space 2D class of fixed size (100 Å) (66). Then, a
477 precise identification of the power spectrum maxima could be achieved on a high signal-
478 to-noise ratio power spectrum, obtained by averaging all the constituting segments in the
479 Fourier domain, which helps lowering the noise, and fill in the CTF zeros regions. The
480 best candidates were validated with Helixplorer (<http://rico.ibs.fr/helixplorer/>).

481 For the C11a cluster, the parameters of a 1-start helix have been identified with a rise of
482 7.937 Å and a twist of 221.05°. For the C12 cluster, the candidate parameters are a rise of
483 20.383 Å and a twist of 49.49° and C3 cyclic symmetry. For the C13a cluster, the
484 candidate parameters correspond to a rise of 31.159 Å and a twist of 24° and D5
485 symmetry.

486 *Cryo-EM data processing and 3D reconstruction*

487 - C11a-C13a

488 After helical parameters determination, two last 2D classifications were performed on
489 segments extracted with a box size of 400 pixels (decimated to 200 pixels) using the

490 proper rises for the most compact C11a (7.93 Å, 113,026 segments, overlap ~98.2%) and
491 the relaxed C13a (31.16 Å, 16,831 segments, overlap ~92.9%). Values of the helical
492 parameters (rise and twist) were then used for Relion 3D classification (28, 29), with a +/-
493 10% freedom search range, using a featureless cylinder as initial reference (diameter of
494 300 Å for the compact particles C11a and 340 Å for the relaxed particles C13a). The
495 superimposable 3D classes (same helical parameters, same helix orientation) were then
496 selected, reducing the data set to 95,722 segments for the compact fiber (C11a) and to
497 15,289 segments for the relaxed fiber (C13a). After re-extraction of the selected segments
498 without scaling, further 3D refinement was performed with a 3D classification output low
499 pass filtered to 15 Å as reference. With this, the maps were resolved enough (C11a: 4.4 Å,
500 C13a: 4.8; FSC threshold 0.5) to identify secondary structure elements (with visible
501 cylinders corresponding to the helices) (Fig. S6-7).

502 - C12

503 The twelve 2D classes corresponding to segments of the C12 conformation, were extracted
504 with a box size of 400 pixels (decimated to 200 pixels, rise 20.4 Å, 5,775 segments,
505 overlap ~94.9%). They were used in Relion for 3D refinement with the helical parameters
506 values identified previously, with a +/-10% freedom search range, using a 330 Å large
507 featureless cylinder as initial reference and resulted in a 7.1 Å map (FSC threshold 0.5)
508 and C3 cyclic symmetry (Fig. S8).

509 *Focused refinement of the asymmetric unit*

510 The C11a map, prior to solvent flattening, was used to obtain the mask corresponding to a
511 single asymmetric unit of the structure (just one dimer). It was then used to subtract
512 everything else from the corresponding experimental images, keeping only information
513 from that asymmetric unit for a following round of focused refinement. The subtracted
514 dataset was then used as input for Relion in order to reconstruct a reference for 3D
515 refinement of the asymmetric unit with a last solvent flattening step. Further CTF
516 refinement steps were performed before last 3D refinement with solvent flattening and
517 post-processing (B-factor applied -45). This led to the best resolved 3.3 Å map (FSC
518 threshold 0.5, masked, Fig. S6) that was used to refine the GMC-oxidoreductase dimer
519 and its ligands (Table S1, Fig. 3). While the mask was only based on the protein
520 asymmetric unit the DNA contribution is still visible in the final map.

521 *Automatic picking of the three different conformations (C11a, C12, C13a)*

522 Projections from the different helical maps were used as new input for automatic picking
523 of each C11a, C12 and C13a clusters to get more homogeneous datasets for each
524 conformation (68). For each dataset a final round of extraction (box size C11a: 380 pixels,
525 121,429 segments; C12: 400 pixels, 8479 segments; C13a: 400 pixels, 11,958 segments)
526 and 3D refinement with solvent flattening (Central z length 30%) was performed using the
527 appropriate helical parameters and additional symmetries (none for C11a, C3 for C12 and
528 D5 for C13a). This led to the improved maps presented in Fig. 2-4 and Fig. S6-S8 (C11a:
529 3.7 Å; C12: 4.0 Å; C13a: 3.7 Å; FSC threshold 0.5, masked). Post-processing was
530 performed with B-factor -80 (Table S1, Fig. S6-S8).

531 *DNA focus refinement*

532 The C11a and C12 maps without solvent flattening were used to obtain the mask
533 corresponding to each DNA strand independently. Each strand was then used for
534 subtraction keeping only information from the corresponding DNA on the corresponding
535 experimental images. The subtracted datasets of each DNA strand were then merged. The
536 resulting dataset was used to perform 2D classifications in order to assess the quality of

537 the subtracted dataset (Fig. S9). It was then used to perform a 3D refinement followed by
538 a 3D classification and final refinement of the best 3D classes (Fig. 3E, Fig. S10).

539 For the C13a compaction states, a cylinder with a diameter corresponding to the lumen of
540 the relaxed structure was used as mask for subtraction, in order to try to enhance the
541 information corresponding to the sole DNA. However, the DNA signal remained too
542 weak.

543 *Structures refinement*

544 The resolution of the EM map enabled to fit the R135 dimeric structure (30) (PDB 4Z24)
545 into the maps using UCSF Chimera 1.13.1 (69). The qu_143 and qu_946 models were
546 obtained using SWISS-MODEL (70) (closest PDB homologue: 4Z24). It is only at that
547 stage that the best fitted qu_946 model was manually inspected and additional N-terminal
548 residues built using the extra density available in the cryo-EM map of the 5-start compact
549 reconstruction (Fig. 3). The entire protein shell built using the corresponding helical
550 parameters were finally fitted into the C11a and C13a maps and were further refined
551 against the map using the real-space refinement program in PHENIX 1.18.2 (33) (Fig. S6-
552 7). The qu_143 model was selected to build the entire shell using the C12 helical
553 parameters and symmetry and was further refined using the real-space refinement program
554 in PHENIX 1.18.2 (33) (Fig. S8). Validations were also performed into PHENIX 1.18.2
555 (33) using the comprehensive validation program (Table S1). The qu_946 model was
556 manually corrected and ultimately refined and validated into PHENIX 1.18.2 (33) using
557 the highest resolution focused refined C11a map. In that map the 2 first amino acid are
558 disordered including the cysteine.

559 **Cryo-electron tomography**

560 *Sample preparation*

561 For cryo-ET of the Mimivirus genomic fiber, samples were prepared as described above
562 for single-particle analysis except that 5 nm colloidal gold fiducial markers (UMC,
563 Utrecht) were added to the sample right before plunge freezing at a ratio of 1:2 (sample:
564 fiducial markers).

565 *Data acquisition*

566 Tilt series were acquired using SerialEM (57) on a Titan Krios (Thermo Scientific)
567 microscope operated at 300 keV and equipped with a K3 direct electron detector and a
568 GIF BioQuantum energy filter (Gatan). We used the dose-symmetric tilt-scheme (71)
569 starting at 0° with a 3° increment to +/-60° at a nominal magnification of 64,000x, a pixel
570 size of 1.4 Å and a total fluence of 150 e-/Å² over the 41 tilts (*i.e.* ~3.7 e-/Å²/tilt for an
571 exposure time of 0.8 s fractionated into 0.2 s frames (Table S3).

572 *Data processing*

573 Tilt series were aligned and reconstructed using the IMOD (72). For visualization
574 purposes, we applied a binning of 8 and SIRT-like filtering from IMOD (72) as well
575 as a bandpass filter bsoft (73). The tomograms have been deposited on EMPIAR,
576 accession number 1131 and videos were prepared with Fiji (Fig. 1E-F, Fig. S11 & Tomo.
577 S1-S4).

578 **Mass spectrometry-based proteomic analysis of Mimivirus virion and genomic fiber**

579 Proteins extracted from total virions and purified fiber were solubilized with Laemmli
580 buffer (4 volumes of sample with 1 volume of Laemmli 5X - 125 mM Tris-HCl pH 6.8,
581 10% SDS, 20% glycerol, 25% β-mercaptoethanol and traces of bromophenol blue) and

582 heated for 10 min at 95 °C. Three independent infections using 3 different batches of
583 virions were performed and the genomic fiber was extracted from the resulting viral
584 particles to analyse three biological replicates. Extracted proteins were stacked in the top
585 of a SDS-PAGE gel (4-12% NuPAGE, Life Technologies), stained with Coomassie blue
586 R-250 (Bio-Rad) before in-gel digestion using modified trypsin (Promega, sequencing
587 grade) as previously described (74). Resulting peptides were analyzed by online
588 nanoliquid chromatography coupled to tandem MS (UltiMate 3000 RSLCnano and Q-
589 Exactive Plus, Thermo Scientific). Peptides were sampled on a 300 μm x 5 mm PepMap
590 C18 precolumn and separated on a 75 μm x 250 mm C18 column (Reprosil-Pur 120 C18-
591 AQ, 1.9 μm , Dr. Maisch) using a 60-min gradient for fiber preparations and a 140-min
592 gradient for virion. MS and MS/MS data were acquired using Xcalibur (Thermo
593 Scientific). Peptides and proteins were identified using Mascot (version 2.7.0) through
594 concomitant searches against Mimivirus reunion, classical contaminant databases
595 (homemade) and the corresponding reversed databases. The Proline software (75) was
596 used to filter the results: conservation of rank 1 peptides, peptide score ≥ 25 , peptide
597 length ≥ 6 , peptide-spectrum-match identification false discovery rate $< 1\%$ as calculated
598 on scores by employing the reverse database strategy, and minimum of 1 specific peptide
599 per identified protein group. Proline was then used to perform a compilation and MS1-
600 based quantification of the identified protein groups. Intensity-based absolute
601 quantification (iBAQ) (76) values were calculated from MS intensities of identified
602 peptides. The viral proteins detected in a minimum of two replicates are reported with
603 their molecular weight, number of identified peptides, sequence coverage and iBAQ
604 values in each replicate. The number of copies per fiber for each protein was calculated
605 according to their iBAQ value based on the GMC-oxidoreductases iBAQ value (see
606 below, Table S2). Mapping of the identified peptides for the GMC-oxidoreductases are
607 presented in Fig. S12.

608 **Protein/DNA ratio validation**

609 To compare the theoretical composition of the genomic fiber accommodating a complete
610 genome with the experimental concentrations in protein and DNA of the sample, we
611 performed DNA and protein quantification (Qubit fluorometric quantification, Thermo
612 Fischer Scientific) on two independent samples of the purified genomic fiber. This
613 returned a concentration of 1.5 ng/ μL for the dsDNA and 24 ng/ μL for the proteins in one
614 sample and 10 ng/ μL for the dsDNA and 150 ng/ μL for the protein in the second sample
615 (deposited on agarose gel, Fig. S2). Considering that all proteins correspond to the GMC-
616 oxidoreductases subunits (~71 kDa), in the sample there is a molecular ratio of 7.2
617 dsDNA base pairs per GMC-oxidoreductases subunit in the first sample and 7.68 in the
618 second. Based on our model, a 5-start genomic fiber containing the complete Mimivirus
619 genome (1,196,989 bp) should be composed of ~95,000 GMC-oxidoreductases subunits
620 (~93,000 for a 6-start). This gives a molecular ratio of 12.5 dsDNA base pairs per GMC-
621 oxidoreductase subunit, which would be more than experimentally measured. However, in
622 the cryo-EM dataset, there are at most 50% of genomic fibers containing the DNA
623 genome (mostly C11), while some DNA strands can be observed attached to the relaxed
624 genomic fiber C13 but the vast majority of released DNA was lost during purification of
625 the genomic fiber. Applying an estimated loss of 50 % to the total DNA compared to the
626 measured values, we obtain a ratio, which is in the same order of magnitude of the ones
627 measured in the purified genomic fiber samples.

628 **Model visualization**

629 Molecular graphics and analyses were performed with UCSF Chimera 1.13.1 (69) and
630 UCSF ChimeraX 1.1 (77), developed by the Resource for Biocomputing, Visualization,
631 and Informatics at the University of California, San Francisco, with support from National
632 Institutes of Health R01-GM129325 and the Office of Cyber Infrastructure and
633 Computational Biology, National Institute of Allergy and Infectious Diseases.
634

635 **Acknowledgements**

636 The cryo-EM work was performed at the multi-user Cryo-EM Facility at CSSB. We thank
637 Jean-Michel Claverie for his comments on the manuscript and discussions all along the
638 project. We thank Irina Gutsche, Ambroise Desfosses, Eric Durand and Juan Reguera for their
639 helpful support on structural work. We thank Carolin Seuring for support and technical help.
640 Processing was performed on the DESY Maxwell cluster, at IBS and IGS. We thank
641 Wolfgang Lugmayr for assistance and Sebastien Santini and Guy Schoehn for support. The
642 preliminary electron microscopy experiments were performed on the PiCSL-FBI core facility
643 (Nicolas Brouilly, Fabrice Richard and Aïcha Aouane, IBDM, AMU-Marseille), member of
644 the France-BioImaging national research infrastructure and on the IMM imaging platform
645 (Artemis Kosta).

646

647 **Competing interests:** Authors declare that they have no competing interests

648

649 **References**

- 650 1. B. La Scola, S. Audic, C. Robert, L. Jungang, X. de Lamballerie, M. Drancourt, R. Birtles, J.-M.
651 Claverie, D. Raoult, A giant virus in amoebae. *Science*. **299**, 2033 (2003).
- 652 2. D. Raoult, S. Audic, C. Robert, C. Abergel, P. Renesto, H. Ogata, B. La Scola, M. Suzan, J.-M.
653 Claverie, The 1.2-megabase genome sequence of Mimivirus. *Science*. **306**, 1344–1350 (2004).
- 654 3. C. Abergel, M. Legendre, J.-M. Claverie, The rapidly expanding universe of giant viruses:
655 Mimivirus, Pandoravirus, Pithovirus and Mollivirus. *FEMS Microbiol. Rev.* **39**, 779–796 (2015).
- 656 4. F. Schulz, S. Roux, D. Paez-Espino, S. Jungbluth, D. A. Walsh, V. J. Deneff, K. D. McMahon, K. T.
657 Konstantinidis, E. A. Eloe-Fadrosh, N. C. Kyrpides, T. Woyke, Giant virus diversity and host
658 interactions through global metagenomics. *Nature*. **578**, 432–436 (2020).
- 659 5. M. Moniruzzaman, A. R. Weinheimer, C. A. Martinez-Gutierrez, F. O. Aylward, Widespread
660 endogenization of giant viruses shapes genomes of green algae. *Nature*. **588**, 141–145 (2020).
- 661 6. H. Kaneko, R. Blanc-Mathieu, H. Endo, S. Chaffron, T. O. Delmont, M. Gaia, N. Henry, R.
662 Hernández-Velázquez, C. H. Nguyen, H. Mamitsuka, P. Forterre, O. Jaillon, C. de Vargas, M. B.
663 Sullivan, C. A. Suttle, L. Guidi, H. Ogata, Eukaryotic virus composition can predict the efficiency
664 of carbon export in the global ocean. *iScience*. **24**, 102002 (2021).
- 665 7. P. Forterre, Giant viruses: conflicts in revisiting the virus concept. *Intervirology*. **53**, 362–378
666 (2010).
- 667 8. J.-M. Claverie, C. Abergel, Mimivirus: the emerging paradox of quasi-autonomous viruses.
668 *Trends Genet.* **26**, 431–437 (2010).

- 669 9. C. Abergel, J. Rudinger-Thirion, R. Giegé, J.-M. Claverie, Virus-encoded aminoacyl-tRNA
670 synthetases: structural and functional characterization of mimivirus TyrRS and MetRS. *J. Virol.*
671 **81**, 12406–12417 (2007).
- 672 10. F. Piacente, C. De Castro, S. Jeudy, M. Gaglianone, M. E. Laugieri, A. Notaro, A. Salis, G.
673 Damonte, C. Abergel, M. G. Tonetti, The rare sugar N-acetylated viosamine is a major
674 component of Mimivirus fibers. *J. Biol. Chem.* **292**, 7385–7394 (2017).
- 675 11. A. Notaro, Y. Couté, L. Belmudes, M. E. Laugieri, A. Salis, G. Damonte, A. Molinaro, M. Tonetti,
676 C. Abergel, C. De Castro, Expanding the Occurrence of Polysaccharides to the Viral World: The
677 Case of Mimivirus. *Angew. Chem. Int. Ed.*, **60**, 19897–19904 (2021).
- 678 12. P. Colson, B. La Scola, A. Levasseur, G. Caetano-Anollés, D. Raoult, Mimivirus: leading the way in
679 the discovery of giant viruses of amoebae. *Nat. Rev. Microbiol.* **15**, 243–254 (2017).
- 680 13. Y. G. Kuznetsov, T. Klose, M. Rossmann, A. McPherson, Morphogenesis of mimivirus and its
681 viral factories: an atomic force microscopy study of infected cells. *J. Virol.* **87**, 11200–11213
682 (2013).
- 683 14. C. Xiao, Y. G. Kuznetsov, S. Sun, S. L. Hafenstein, V. A. Kostyuchenko, P. R. Chipman, M. Suzan-
684 Monti, D. Raoult, A. McPherson, M. G. Rossmann, Structural Studies of the Giant Mimivirus.
685 *PLoS Biol.* **7**, e1000092 (2009).
- 686 15. T. Klose, Y. G. Kuznetsov, C. Xiao, S. Sun, A. McPherson, M. G. Rossmann, The three-
687 dimensional structure of Mimivirus. *Intervirology.* **53**, 268–273 (2010).
- 688 16. T. Ekeberg, M. Svenda, C. Abergel, F. R. N. C. Maia, V. Seltzer, J.-M. Claverie, M. Hantke, O.
689 Jönsson, C. Nettelblad, G. van der Schot, M. Liang, D. P. DePonte, A. Barty, M. M. Seibert, B.
690 Iwan, I. Andersson, N. D. Loh, A. V. Martin, H. Chapman, C. Bostedt, J. D. Bozek, K. R. Ferguson,
691 J. Krzywinski, S. W. Epp, D. Rolles, A. Rudenko, R. Hartmann, N. Kimmel, J. Hajdu, Three-
692 dimensional reconstruction of the giant mimivirus particle with an x-ray free-electron laser.
693 *Phys. Rev. Lett.* **114**, 098102 (2015).
- 694 17. J. R. Schrad, J. S. Abrahão, J. R. Cortines, K. N. Parent, Structural and Proteomic Characterization
695 of the Initiation of Giant Virus Infection. *Cell.* **181**, 1046–1061.e6 (2020).
- 696 18. V. Chelikani, T. Ranjan, K. Kondabagil, Revisiting the genome packaging in viruses with lessons
697 from the “Giants.” *Virology.* **466–467**, 15–26 (2014).
- 698 19. Y. G. Kuznetsov, C. Xiao, S. Sun, D. Raoult, M. Rossmann, A. McPherson, Atomic force
699 microscopy investigation of the giant mimivirus. *Virology.* **404**, 127–137 (2010).
- 700 20. J.-M. Claverie, R. Grzela, A. Lartigue, A. Bernadac, S. Nitsche, J. Vacelet, H. Ogata, C. Abergel,
701 Mimivirus and Mimiviridae: giant viruses with an increasing number of potential hosts,
702 including corals and sponges. *J. Invertebr. Pathol.* **101**, 172–180 (2009).
- 703 21. D. Arslan, M. Legendre, V. Seltzer, C. Abergel, J.-M. Claverie, Distant Mimivirus relative with a
704 larger genome highlights the fundamental features of Megaviridae. *Proc. Natl. Acad. Sci. U. S.*
705 *A.* **108**, 17486–17491 (2011).
- 706 22. N. Zauberman, Y. Mutsafi, D. B. Halevy, E. Shimoni, E. Klein, C. Xiao, S. Sun, A. Minsky, Distinct
707 DNA exit and packaging portals in the virus *Acanthamoeba polyphaga* mimivirus. *PLoS Biol.* **6**,
708 e114 (2008).

- 709 23. M. Suzan-Monti, B. L. Scola, L. Barrassi, L. Espinosa, D. Raoult, Ultrastructural Characterization
710 of the Giant Volcano-like Virus Factory of *Acanthamoeba polyphaga* Mimivirus. *PLoS ONE*. **2**,
711 e328 (2007).
- 712 24. Y. Mutsafi, Y. Fridmann-Sirkis, E. Milrot, L. Hevroni, A. Minsky, Infection cycles of large DNA
713 viruses: emerging themes and underlying questions. *Virology*. **466–467**, 3–14 (2014).
- 714 25. W. Wu, J. A. Thomas, N. Cheng, L. W. Black, A. C. Steven, Bubblegrams Reveal the Inner Body of
715 Bacteriophage KZ. *Science*. **335**, 182–182 (2012).
- 716 26. N. Cheng, W. Wu, N. R. Watts, A. C. Steven, Exploiting radiation damage to map proteins in
717 nucleoprotein complexes: The internal structure of bacteriophage T7. *J. Struct. Biol.* **185**, 250–
718 256 (2014).
- 719 27. M. Mishyna, O. Volokh, Ya. Danilova, N. Gerasimova, E. Pechnikova, O. S. Sokolova, Effects of
720 radiation damage in studies of protein-DNA complexes by cryo-EM. *Micron*. **96**, 57–64 (2017).
- 721 28. S. He, S. H. W. Scheres, Helical reconstruction in RELION. *J. Struct. Biol.* **198**, 163–176 (2017).
- 722 29. S. H. W. Scheres, RELION: Implementation of a Bayesian approach to cryo-EM structure
723 determination. *J. Struct. Biol.* **180**, 519–530 (2012).
- 724 30. T. Klose, D. A. Herbst, H. Zhu, J. P. Max, H. I. Kenttämaa, M. G. Rossmann, A Mimivirus Enzyme
725 that Participates in Viral Entry. *Struct. Lond. Engl.* **1993**. **23**, 1058–1065 (2015).
- 726 31. M. Boyer, S. Azza, L. Barrassi, T. Klose, A. Campocasso, I. Pagnier, G. Fournous, A. Borg, C.
727 Robert, X. Zhang, C. Desnues, B. Henrissat, M. G. Rossmann, B. La Scola, D. Raoult, Mimivirus
728 shows dramatic genome reduction after intraamoebal culture. *Proc. Natl. Acad. Sci. U. S. A.*
729 **108**, 10296–10301 (2011).
- 730 32. A. Waterhouse, M. Bertoni, S. Bienert, G. Studer, G. Tauriello, R. Gumienny, F. T. Heer, T. A. P.
731 de Beer, C. Rempfer, L. Bordoli, R. Lepore, T. Schwede, SWISS-MODEL: homology modelling of
732 protein structures and complexes. *Nucleic Acids Res.* **46**, W296–W303 (2018).
- 733 33. D. Liebschner, P. V. Afonine, M. L. Baker, G. Bunkóczi, V. B. Chen, T. I. Croll, B. Hintze, L.-W.
734 Hung, S. Jain, A. J. McCoy, N. W. Moriarty, R. D. Oeffner, B. K. Poon, M. G. Prisant, R. J. Read, J.
735 S. Richardson, D. C. Richardson, M. D. Sammito, O. V. Sobolev, D. H. Stockwell, T. C. Terwilliger,
736 A. G. Urzhumtsev, L. L. Videau, C. J. Williams, P. D. Adams, Macromolecular structure
737 determination using X-rays, neutrons and electrons: recent developments in *Phenix*. *Acta*
738 *Crystallogr. Sect. Struct. Biol.* **75**, 861–877 (2019).
- 739 34. S. Li, W. K. Olson, X.-J. Lu, Web 3DNA 2.0 for the analysis, visualization, and modeling of 3D
740 nucleic acid structures. *Nucleic Acids Res.* **47**, W26–W34 (2019).
- 741 35. D. Ptchelkine, A. Gillum, T. Mochizuki, S. Lucas-Staat, Y. Liu, M. Krupovic, S. E. V. Phillips, D.
742 Prangishvili, J. T. Huiskonen, Unique architecture of thermophilic archaeal virus APBV1 and its
743 genome packaging. *Nat. Commun.* **8**, 1436 (2017).
- 744 36. C. Grimm, H. S. Hillen, K. Bedenk, J. Bartuli, S. Neyer, Q. Zhang, A. Hüttenhofer, M. Erlacher, C.
745 Dienemann, A. Schlosser, H. Urlaub, B. Böttcher, A. A. Szalay, P. Cramer, U. Fischer, Structural
746 Basis of Poxvirus Transcription: Vaccinia RNA Polymerase Complexes. *Cell*. **179**, 1537-1550.e19
747 (2019).

- 748 37. F. DiMaio, X. Yu, E. Rensen, M. Krupovic, D. Prangishvili, E. H. Egelman, *Virology*. A virus that
749 infects a hyperthermophile encapsidates A-form DNA. *Science*. **348**, 914–917 (2015).
- 750 38. F. Wang, D. P. Baquero, L. C. Beltran, Z. Su, T. Osinski, W. Zheng, D. Prangishvili, M. Krupovic, E.
751 H. Egelman, Structures of filamentous viruses infecting hyperthermophilic archaea explain DNA
752 stabilization in extreme environments. *Proc. Natl. Acad. Sci. U. S. A.* **117**, 19643–19652 (2020).
- 753 39. P. J. J. Robinson, L. Fairall, V. A. T. Huynh, D. Rhodes, EM measurements define the dimensions
754 of the “30-nm” chromatin fiber: evidence for a compact, interdigitated structure. *Proc. Natl.*
755 *Acad. Sci. U. S. A.* **103**, 6506–6511 (2006).
- 756 40. Y. Liu, H. Bisio, C. M. Toner, S. Jeudy, N. Philippe, K. Zhou, S. Bowerman, A. White, G. Edwards,
757 C. Abergel, K. Luger, Virus-encoded histone doublets are essential and form nucleosome-like
758 structures. *Cell*. **184**, 4237-4250.e19 (2021).
- 759 41. M. I. Valencia-Sánchez, S. Abini-Agbomson, M. Wang, R. Lee, N. Vasilyev, J. Zhang, P. De
760 loannes, B. La Scola, P. Talbert, S. Henikoff, E. Nudler, A. Erives, K.-J. Armache, The structure of
761 a virus-encoded nucleosome. *Nat. Struct. Mol. Biol.* **28**, 413–417 (2021).
- 762 42. P. J. Bell, Viral eukaryogenesis: was the ancestor of the nucleus a complex DNA virus? *J. Mol.*
763 *Evol.* **53**, 251–256 (2001).
- 764 43. P. J. L. Bell, Evidence supporting a viral origin of the eukaryotic nucleus. *Virus Res.* **289**, 198168
765 (2020).
- 766 44. V. Chaikerasitak, K. Nguyen, K. Khanna, A. F. Brilot, M. L. Erb, J. K. C. Coker, A. Vavilina, G. L.
767 Newton, R. Buschauer, K. Pogliano, E. Villa, D. A. Agard, J. Pogliano, Assembly of a nucleus-like
768 structure during viral replication in bacteria. *Science*. **355**, 194–197 (2017).
- 769 45. J.-M. Claverie, Viruses take center stage in cellular evolution. *Genome Biol.* **7**, 110 (2006).
- 770 46. M. Takemura, Poxviruses and the origin of the eukaryotic nucleus. *J. Mol. Evol.* **52**, 419–425
771 (2001).
- 772 47. D. Gong, X. Dai, J. Jih, Y.-T. Liu, G.-Q. Bi, R. Sun, Z. H. Zhou, DNA-Packing Portal and Capsid-
773 Associated Tegument Complexes in the Tumor Herpesvirus KSHV. *Cell*. **178**, 1329-1343.e12
774 (2019).
- 775 48. Y.-T. Liu, J. Jih, X. Dai, G.-Q. Bi, Z. H. Zhou, Cryo-EM structures of herpes simplex virus type 1
776 portal vertex and packaged genome. *Nature*. **570**, 257–261 (2019).
- 777 49. L. Sun, X. Zhang, S. Gao, P. A. Rao, V. Padilla-Sanchez, Z. Chen, S. Sun, Y. Xiang, S. Subramaniam,
778 V. B. Rao, M. G. Rossmann, Cryo-EM structure of the bacteriophage T4 portal protein assembly
779 at near-atomic resolution. *Nat. Commun.* **6**, 7548 (2015).
- 780 50. V. B. Rao, M. Feiss, Mechanisms of DNA Packaging by Large Double-Stranded DNA Viruses.
781 *Annu. Rev. Virol.* **2**, 351–378 (2015).
- 782 51. K. Suhre, S. Audic, J.-M. Claverie, Mimivirus gene promoters exhibit an unprecedented
783 conservation among all eukaryotes. *Proc. Natl. Acad. Sci. U. S. A.* **102**, 14689–14693 (2005).
- 784 52. S. Toriyama, An RNA-dependent RNA Polymerase Associated with the Filamentous
785 Nucleoproteins of Rice Stripe Virus. *J. Gen. Virol.* **67**, 1247–1255 (1986).

- 786 53. A. M. Collier, O. L. Lyytinen, Y. R. Guo, Y. Toh, M. M. Poranen, Y. J. Tao, Initiation of RNA
787 Polymerization and Polymerase Encapsidation by a Small dsRNA Virus. *PLOS Pathog.* **12**,
788 e1005523 (2016).
- 789 54. K. Ding, C. C. Celma, X. Zhang, T. Chang, W. Shen, I. Atanasov, P. Roy, Z. H. Zhou, In situ
790 structures of rotavirus polymerase in action and mechanism of mRNA transcription and release.
791 *Nat. Commun.* **10**, 2216 (2019).
- 792 55. A. J. Malkin, A. McPherson, P. D. Gershon, Structure of Intracellular Mature Vaccinia Virus
793 Visualized by In Situ Atomic Force Microscopy. *J. Virol.* **77**, 6332–6340 (2003).
- 794 56. R. Blanc-Mathieu, H. Dahle, A. Hofgaard, D. Brandt, H. Ban, J. Kalinowski, H. Ogata, R.-A.
795 Sandaa, A Persistent Giant Algal Virus, with a Unique Morphology, Encodes an Unprecedented
796 Number of Genes Involved in Energy Metabolism. *J. Virol.* **95** (2021), doi:10.1128/JVI.02446-20.
- 797 57. D. N. Mastronarde, Automated electron microscope tomography using robust prediction of
798 specimen movements. *J. Struct. Biol.* **152**, 36–51 (2005).
- 799 58. S. Q. Zheng, E. Palovcak, J.-P. Armache, K. A. Verba, Y. Cheng, D. A. Agard, MotionCor2:
800 anisotropic correction of beam-induced motion for improved cryo-electron microscopy. *Nat.*
801 *Methods.* **14**, 331–332 (2017).
- 802 59. A. Rohou, N. Grigorieff, CTFFIND4: Fast and accurate defocus estimation from electron
803 micrographs. *J. Struct. Biol.* **192**, 216–221 (2015).
- 804 60. C. R. Harris, K. J. Millman, S. J. van der Walt, R. Gommers, P. Virtanen, D. Cournapeau, E.
805 Wieser, J. Taylor, S. Berg, N. J. Smith, R. Kern, M. Picus, S. Hoyer, M. H. van Kerkwijk, M. Brett,
806 A. Haldane, J. F. del Río, M. Wiebe, P. Peterson, P. Gérard-Marchant, K. Sheppard, T. Reddy, W.
807 Weckesser, H. Abbasi, C. Gohlke, T. E. Oliphant, Array programming with NumPy. *Nature.* **585**,
808 357–362 (2020).
- 809 61. F. Pedregosa, G. Varoquaux, A. Gramfort, V. Michel, B. Thirion, O. Grisel, M. Blondel, P.
810 Prettenhofer, R. Weiss, V. Dubourg, J. Vanderplas, A. Passos, D. Cournapeau, M. Brucher, M.
811 Perrot, É. Duchesnay, Scikit-learn: Machine Learning in Python. *J. Mach. Learn. Res.* **12**, 2825–
812 2830 (2011).
- 813 62. M. Hahsler, M. Piekenbrock, D. Doran, **dbscan** : Fast Density-Based Clustering with R. *J. Stat.*
814 *Softw.* **91**, 1-30 (2019).
- 815 63. S. Mannor, X. Jin, J. Han, X. Jin, J. Han, X. Jin, J. Han, X. Zhang, K-mean clustering, in
816 *Encyclopedia of Machine Learning*, C. Sammut, G. I. Webb, Eds. (Springer US, Boston, MA, 2011;
817 http://link.springer.com/10.1007/978-0-387-30164-8_425), pp. 563–564 (2011).
- 818 64. M. Guizar-Sicairos, S. T. Thurman, J. R. Fienup, Efficient subpixel image registration algorithms.
819 *Opt. Lett.* **33**, 156 (2008).
- 820 65. N. Coudray, R. Lasala, Z. Zhang, K. M. Clark, M. E. Dumont, D. L. Stokes, Deducing the symmetry
821 of helical assemblies: Applications to membrane proteins. *J. Struct. Biol.* **195**, 167–178 (2016).
- 822 66. R. Diaz, W. J. Rice, D. L. Stokes, Fourier-Bessel reconstruction of helical assemblies. *Methods*
823 *Enzymol.* **482**, 131–165 (2010).

- 824 67. C. Sachse, Single-particle based helical reconstruction—how to make the most of real and
825 Fourier space. *AIMS Biophys.* **2**, 219–244 (2015).
- 826 68. L. F. Estrozi, J. Navaza, Fast projection matching for cryo-electron microscopy image
827 reconstruction. *J. Struct. Biol.* **162**, 324–334 (2008).
- 828 69. E. F. Pettersen, T. D. Goddard, C. C. Huang, G. S. Couch, D. M. Greenblatt, E. C. Meng, T. E.
829 Ferrin, UCSF Chimera-A visualization system for exploratory research and analysis. *J. Comput.*
830 *Chem.* **25**, 1605–1612 (2004).
- 831 70. A. Waterhouse, M. Bertoni, S. Bienert, G. Studer, G. Tauriello, R. Gumienny, F. T. Heer, T. A. P.
832 de Beer, C. Rempfer, L. Bordoli, R. Lepore, T. Schwede, SWISS-MODEL: homology modelling of
833 protein structures and complexes. *Nucleic Acids Res.* **46**, W296–W303 (2018).
- 834 71. W. J. H. Hagen, W. Wan, J. A. G. Briggs, Implementation of a cryo-electron tomography tilt-
835 scheme optimized for high resolution subtomogram averaging. *J. Struct. Biol.* **197**, 191–198
836 (2017).
- 837 72. J. R. Kremer, D. N. Mastronarde, J. R. McIntosh, Computer visualization of three-dimensional
838 image data using IMOD. *J. Struct. Biol.* **116**, 71–76 (1996).
- 839 73. J. B. Heymann, D. M. Belnap, Bsoft: image processing and molecular modeling for electron
840 microscopy. *J. Struct. Biol.* **157**, 3–18 (2007).
- 841 74. M. G. Casabona, Y. Vandenbrouck, I. Attree, Y. Couté, Proteomic characterization of
842 *Pseudomonas aeruginosa* PAO1 inner membrane. *Proteomics.* **13**, 2419–2423 (2013).
- 843 75. D. Bouyssié, A.-M. Hesse, E. Mouton-Barbosa, M. Rompais, C. Macron, C. Carapito, A. Gonzalez
844 de Peredo, Y. Couté, V. Dupierris, A. Burel, J.-P. Menetrey, A. Kalaitzakis, J. Poisat, A. Romdhani,
845 O. Burlet-Schiltz, S. Cianférani, J. Garin, C. Bruley, Proline: an efficient and user-friendly
846 software suite for large-scale proteomics. *Bioinforma. Oxf. Engl.* **36**, 3148–3155 (2020).
- 847 76. B. Schwanhäusser, D. Busse, N. Li, G. Dittmar, J. Schuchhardt, J. Wolf, W. Chen, M. Selbach,
848 Global quantification of mammalian gene expression control. *Nature.* **473**, 337–342 (2011).
- 849 77. T. D. Goddard, C. C. Huang, E. C. Meng, E. F. Pettersen, G. S. Couch, J. H. Morris, T. E. Ferrin,
850 UCSF ChimeraX: Meeting modern challenges in visualization and analysis: UCSF ChimeraX
851 Visualization System. *Protein Sci.* **27**, 14–25 (2018).

852

853 **Funding:**

854 This project has received funding from the European Research Council (ERC) under the
855 European Union’s Horizon 2020 research and innovation program (grant agreement No
856 832601).

857 This work was also partially supported by the French National Research Agency ANR-16-
858 CE11-0033-01.

859 Proteomic experiments were partly supported by ProFI (ANR-10-INBS-08-01) and GRAL, a
860 program from the Chemistry Biology Health (CBH) Graduate School of University Grenoble
861 Alpes (ANR-17-EURE-0003).

862 Cryo-EM data collection was supported by DFG grants (INST 152/772-1|152/774-1|152/775-
863 1|152/776-1).

864 Work in the laboratory of Kay Grünewald is funded by the Wellcome Trust (107806/Z/15/Z),
865 the Leibniz Society, the City of Hamburg and the BMBF (05K18BHA).

866 Emmanuelle Quemin received support from the Alexander von Humboldt foundation to
867 (individual research fellowship No. FRA 1200789 HFST-P).

868 France-BioImaging national research infrastructure (ANR-10-INBS-04).

869

870 **Authors contributions:**

871 Conceptualization and Project administration: CA

872 Methodology: AV, AS, LFE, EQ, JMA, AL, LB, YC and CA

873 Formal Analysis: AV, AS, LFE, EQ, JMA, AL, LB, YC and CA

874 Software: AS, AV, LFE, CA

875 Investigation: AV, AS, LFE, EQ, JMA, AL, LB, AC, FH, YC and CA

876 Funding acquisition: CA, KG, EQ, YC

877 Resources: KG granted access to acquisition and analytic tools

878 Writing – original draft: CA

879 Writing – review & editing: AV, AS, EQ, KG and CA

880

881 **Data and materials availability:** Mimivirus reunion genome has been deposited under the
882 following accession number: BankIt2382307 Seq1 MW004169. 3D reconstruction maps and
883 the corresponding PDB have been deposited to EMDB (Deposition number C11a: 7YX4,
884 EMD-14354; C11a focused refined: 7PTV, EMD-13641; C13a: 7YX5, EMD-14355; C12:
885 7YX3, EMD-14353). The mass spectrometry proteomics data have been deposited to the
886 ProteomeXchange Consortium via the PRIDE partner repository with the dataset identifier
887 PXD021585 and 10.6019/PXD021585. The tomograms have been deposited in EMPIAR
888 under the accession number 1131.

889

890 **Supplementary Materials**

891 Figures S1-S12

892 Tables S1-S3

893 Video S1-S3

894 **The Videos, tomograms, EM maps and pdb files can be found under the following link:**

895 <https://s.421.fr/mfiberdata>

896

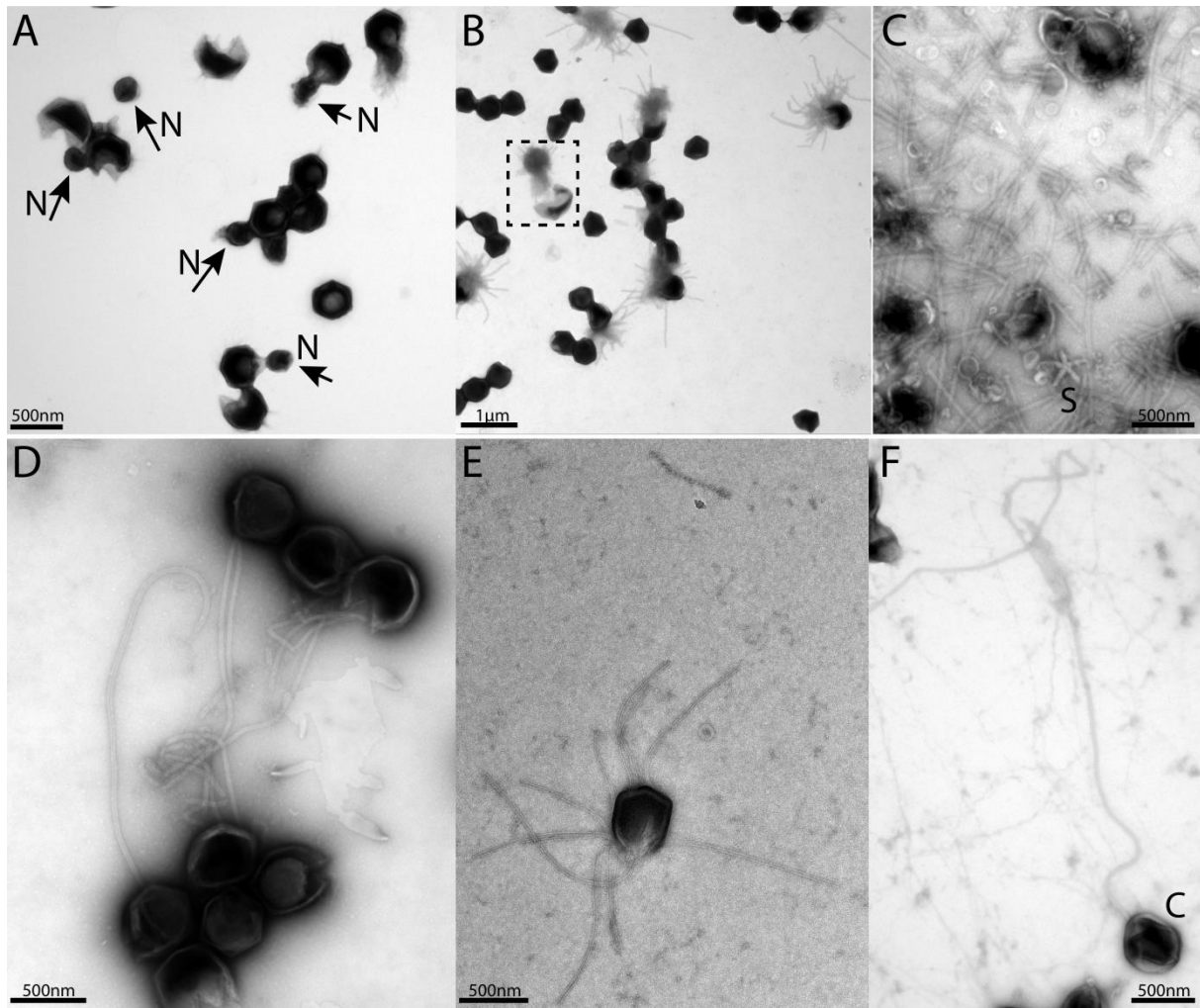


Fig. S1: Negative staining micrographs of opened Mimivirus reunion virions before purification of the genomic fiber. (A) Spherical nucleoids (N) released from the capsids upon specific treatment (see methods). (B) Dissolved nucleoids expelled from the opened capsids after regular treatment (the region marked with dashed lines is enlarged in Fig 1C), all of the opened capsids (>25%) are releasing the condensed genomic fiber. (C) Multiple broken genomic fibers can be seen next to debris prior to purification and an isolated Stargate (S). (D-E) Multiple segments of the flexible genomic fiber are released upon proteolytic treatment of the capsids. (F) Example of a long, flexible, genomic fiber released from an open capsid (C).

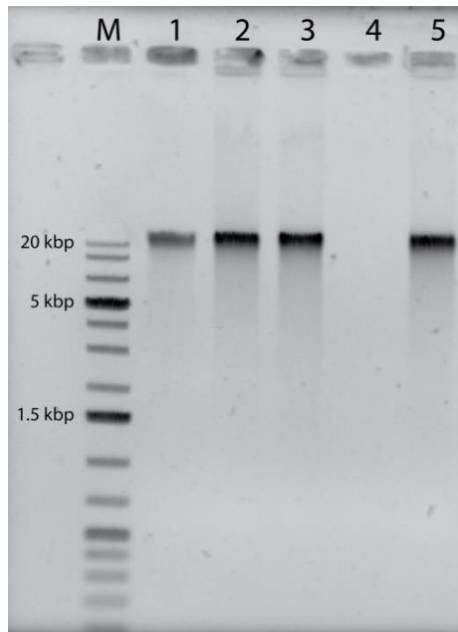


Fig. S2: Agarose gel electrophoresis of the purified genomic fiber compared to the viral genomic DNA: M: Molecular weight markers (1 kbp DNA Ladder Plus, Euromedex). Lane 1, 100 ng of Mimivirus genomic DNA, Lane 2: 200 ng of untreated genomic fiber, Lane 3: 200 ng of Proteinase K-(PK) treated genomic fiber, Lane 4: 200 ng of DNase- and PK-treated genomic fiber, Lane 5: 200 ng of RNase- and PK-treated genomic fiber.

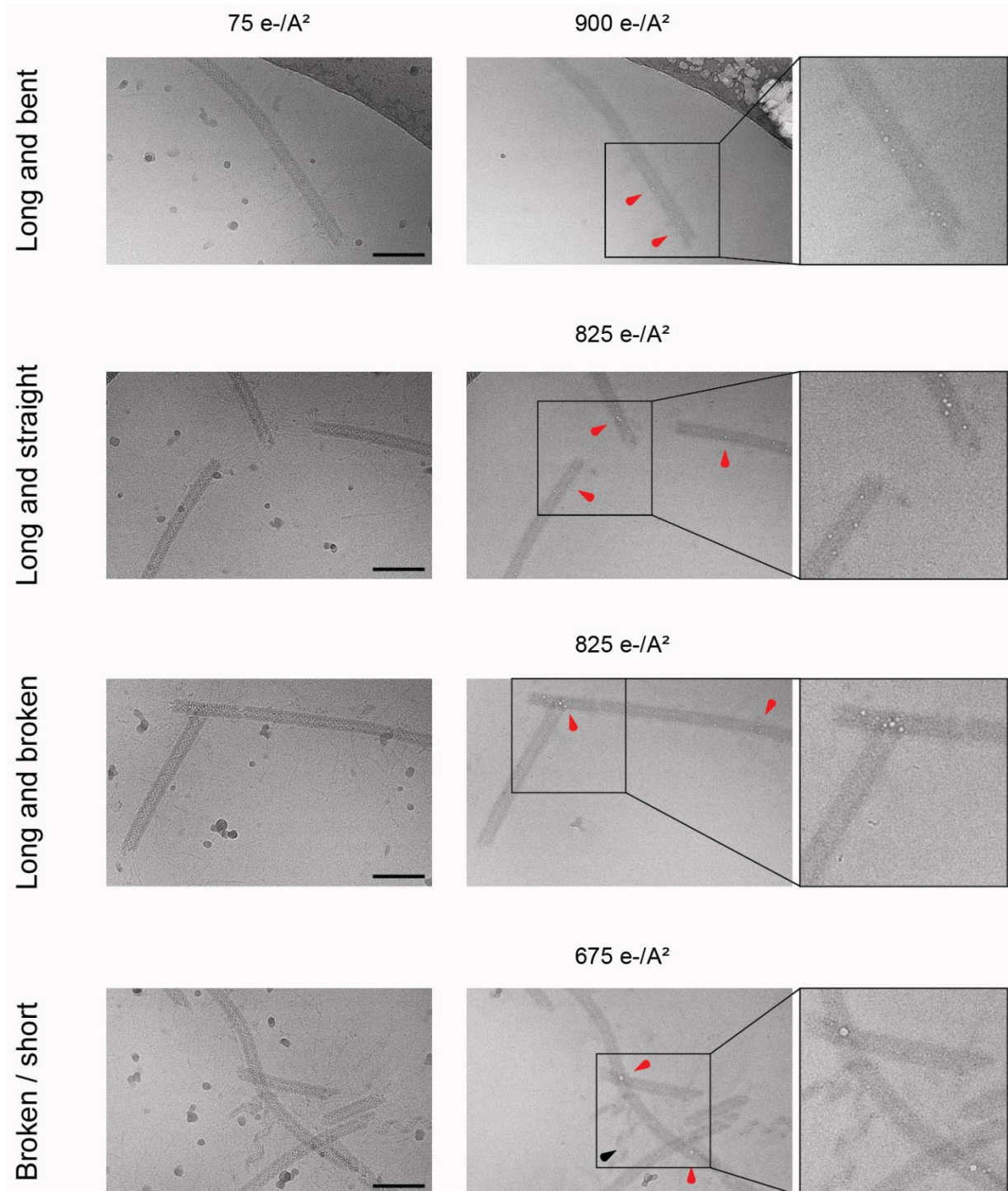


Fig. S3: Bubblegrams on the Mimivirus genomic fiber. Field of view for genomic fibers either (from top to bottom): long and bent, long and straight, long and broken, or a mix of short and broken, subjected to a dose series. The total electron flux applied is specified for each field of view. First column: fibers showed after the first exposure of 75 e-/Å². Second column: representative micrographs indicating the point at which the first sign of radiation damage as “bubbles” inside the fiber (red arrowheads) were detected. Nucleoproteins with high nucleic acid content are often more susceptible to bubbling than pure proteinaceous structures. In unfolded ribbons (black arrowhead), no bubbles are detected at an accumulated flux of up to 1,125 e-/Å². Scale bars, 100 nm. Third column: enlarged view where the effect of radiation damage as trapped “bubbles” is more clearly visible.

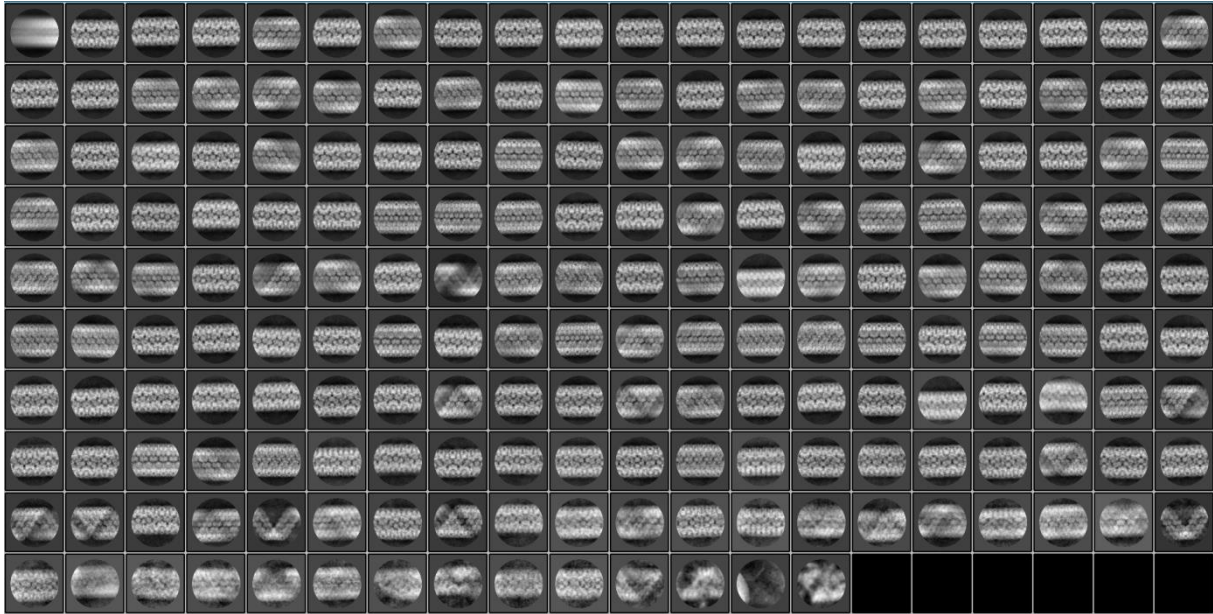


Fig. S4: 2D classification. 200 2D classes (6 empty) were obtained after reference-free 2D classification of fibers acquired (see methods) for single-particle analysis and extracted with a box size of 500 pixels in Relion 3.1.0 after motion correction, CTF estimation and manual picking. The 2D classes are representative of the different relaxation states of the Mimivirus genomic fiber observed in our highly heterogeneous dataset.

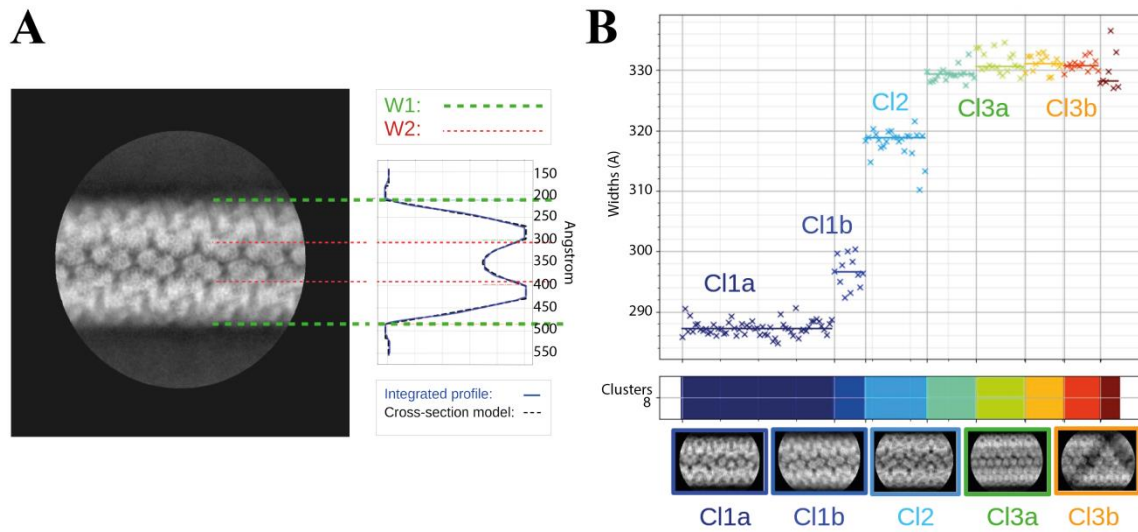


Fig. S5: Clustering analysis of the 2D classes. (A) Cross-section model adjusted to one 2D class, representative of cluster C11b, to estimate the parameters of the widths W1 (external) and W2 (internal). (B) Automatic sorting of the 2D classes using the fiber width W1 and pairwise correlations of the 2D classes resulting in 3 main clusters (compact, C11 in dark blue; intermediate, C12 in cyan and relaxed, C13 in green and orange).

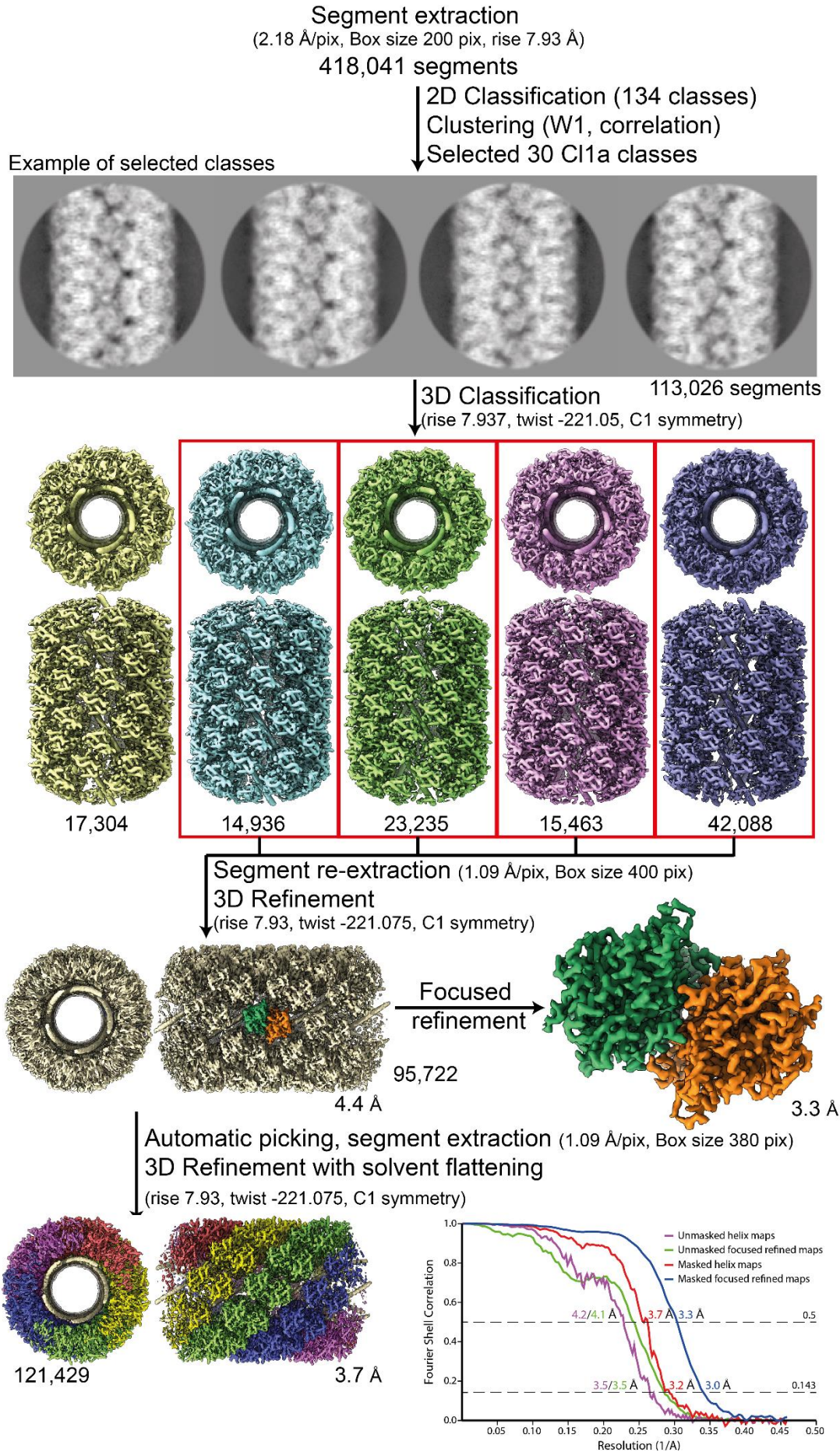


Fig. S6: Workflow of the C11a compact helix reconstruction process and fitting. Segment extraction was performed with a box size of 400 pixels (pix) binned twice (box size 200 pix, 2.18 Å/pix). The distance between consecutive boxes was equal to the axial rise calculated by indexation on the power spectrum. From 2D classification with 200 classes, 30 classes were selected for C11a after clustering (see methods and Fig. S5). First, 3D classification was carried out using the segments from 30 2D classes, helical symmetry parameters from the power spectrum indexation and a 300 Å featureless cylinder as 3D reference. 3D-refinement of the 4 boxed 3D-classes was achieved using one low pass filtered 3D class as reference on the unbinned segments. One step of focused refinement (with solvent flattening) was performed using a low pass filtered 3D reconstruction (before solvent flattening) as reference. 3D-refinement was then performed. The resulting map was then used as model for automatic picking. A last 3D-refinement cycle was performed using as reference a featureless cylinder. The bottom right graph presents the Fourier shell correlation (FSC) curves for the final 3D reconstructions (helical assembly and asymmetric unit).

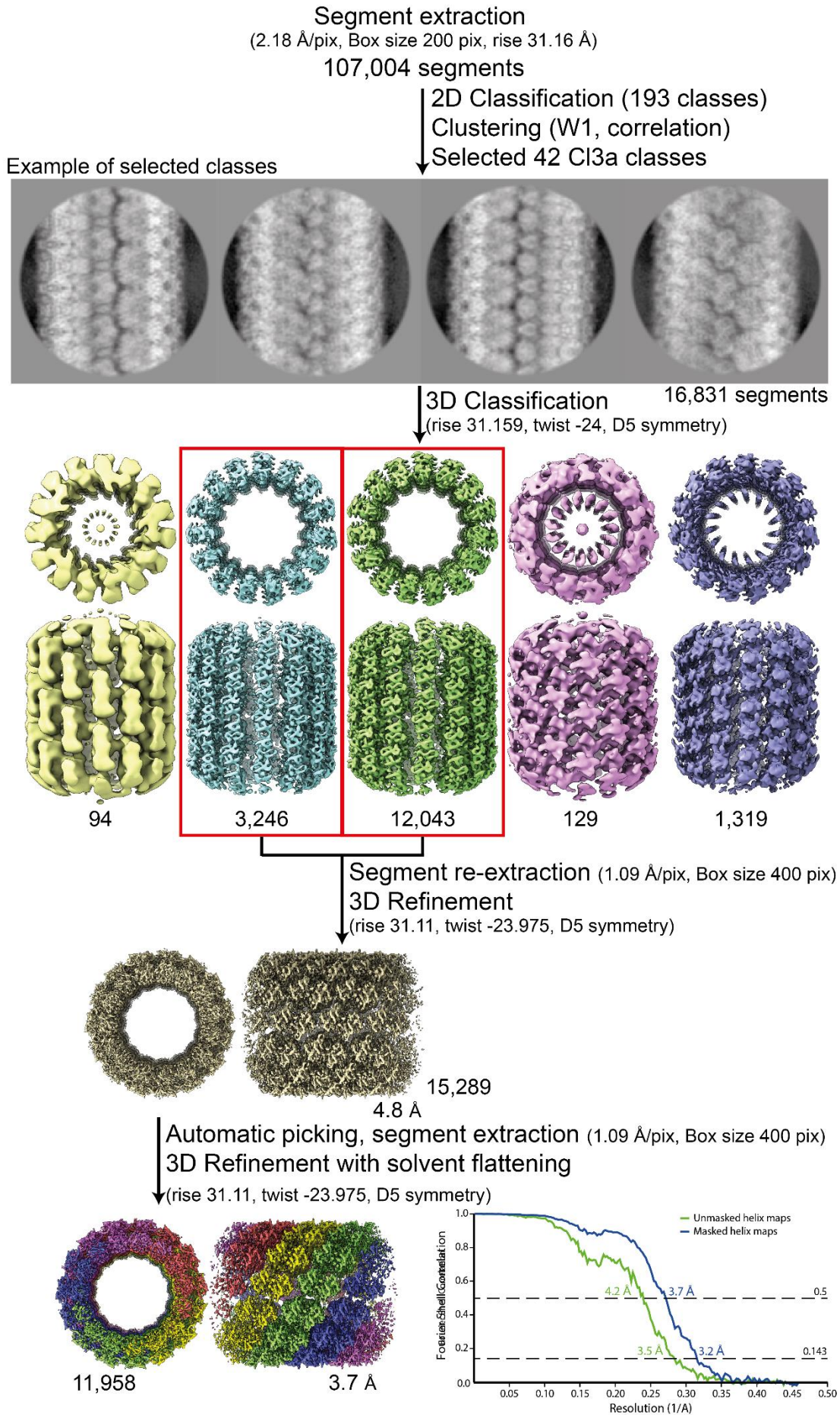


Fig. S7: Workflow of the Cl3a relaxed helix reconstruction process and fitting. Segment extraction was performed with a box size of 400 pixels (pix) binned twice (box size 200 pix, 2.18 Å/pix) using the rise obtained from the power spectrum indexation (see methods). From 2D classifications with 200 classes, 42 classes were selected for Cl3a after clustering (see methods and Fig. S5). First, 3D classification was carried out using the 42 2D classes, with D5 symmetry, rise and twist from the power spectrum indexation and a featureless cylinder of 340 Å as reference. 3D-refinement of the two 3D-classes (red boxes) was achieved using one low pass filtered 3D class as reference on the unbinned segments. The resulting map was used as model for automatic picking and segment extraction. Final 3D-refinement was performed on unbinned segments using as initial reference a featureless cylinder with a last step of solvent flattening.

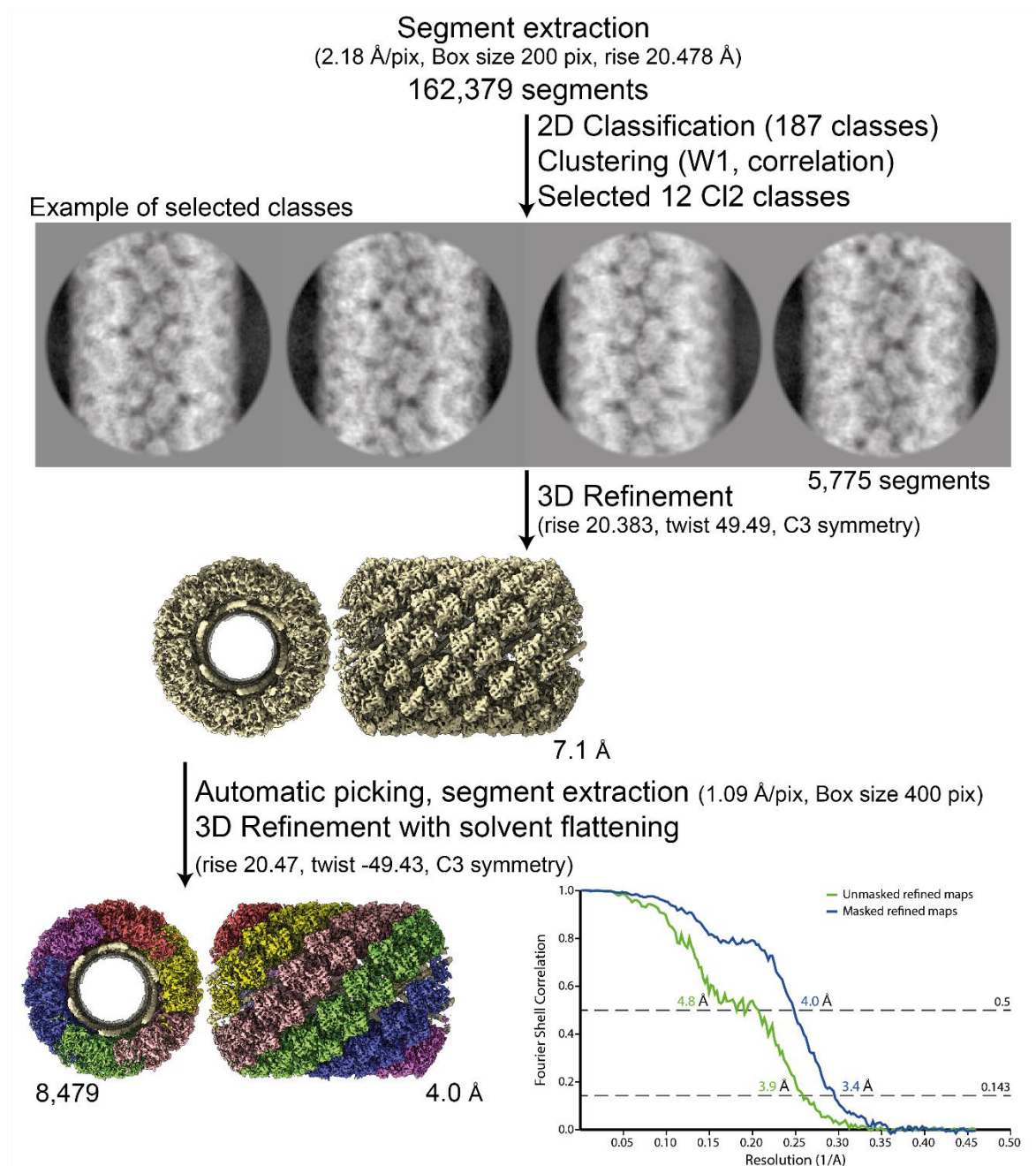


Fig. S8: Workflow of the CI2 helix reconstruction process and fitting. Segment extraction was performed with a box size of 400 pixels (pix) binned twice (box size 200 pix, 2.18 Å/pix) using the rise obtained from the power spectrum indexation (see methods). From 2D classifications with 200 classes, 12 classes were selected for CI2 based on correlation (see methods and Fig. S5). First, 3D-refinements combining 12 2D classes with solvent flattening, were performed with the C3 symmetry, rise and twist from the power spectrum indexation and a 330 Å featureless cylinder as reference. The resulting map was used as model for automatic picking and segment extraction on the unbinned segments. Final 3D-refinement was performed on unbinned segments using as initial reference a featureless cylinder with a last step of solvent flattening.

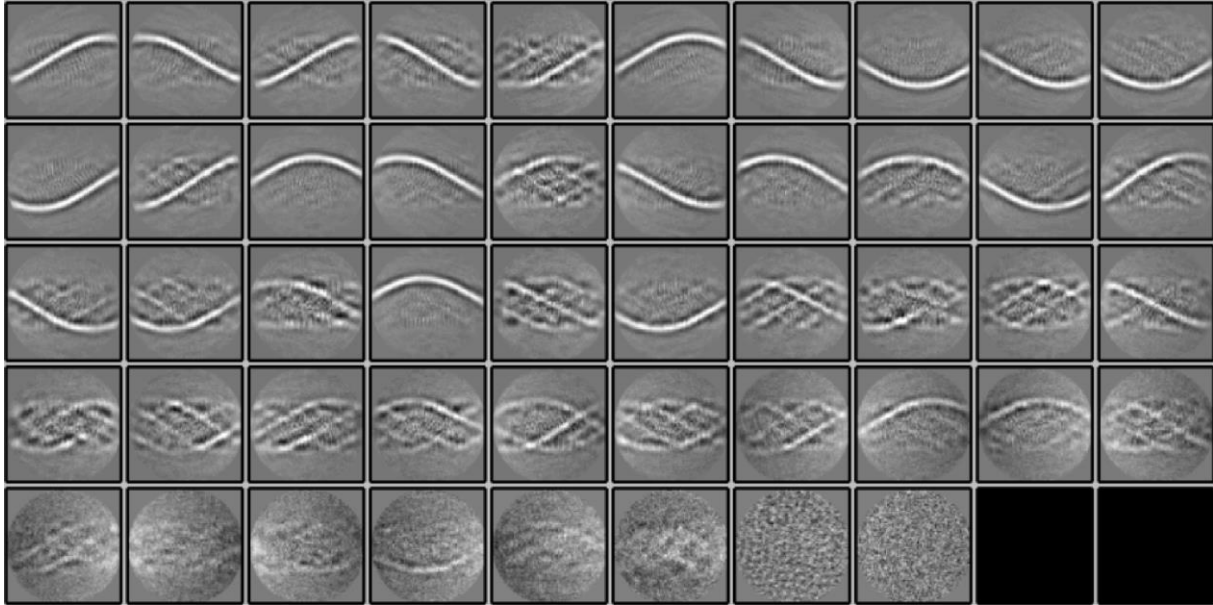


Fig. S9: 2D Classification of subtracted segments. 50 2D classes (2 empty) were obtained after reference-free 2D classification in Relion 3.1.0 of segments (box size of 400 pixels) of the C11a genomic fibers after signal subtraction to keep only the information of the DNA strands inside the fiber. The 2D classes show the enhancement of the signal corresponding to the DNA.

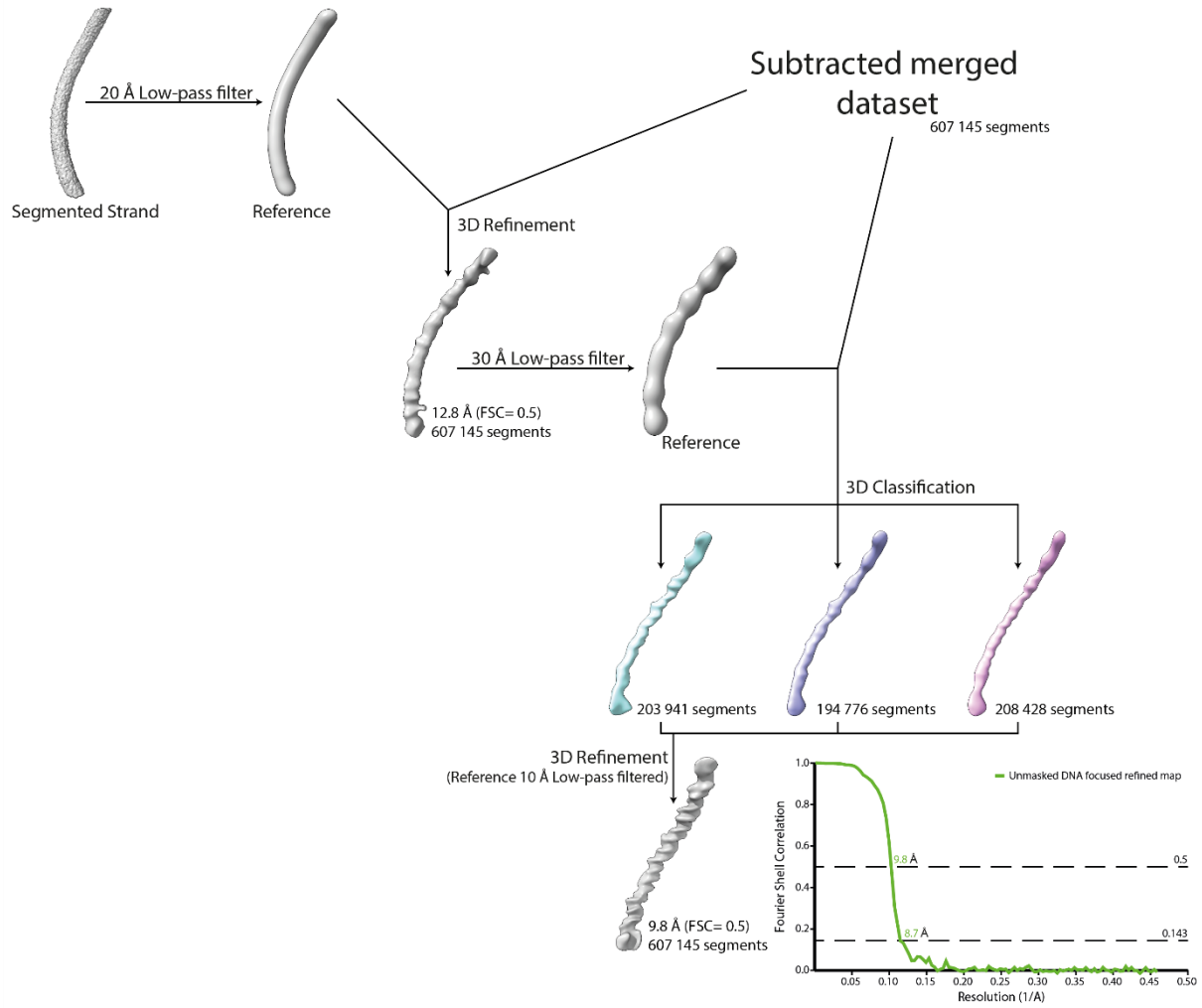


Fig. S10: Workflow of the DNA strand focused refinement process. One strand segmented from the 5-start compacted map (C11a) was low-pass filtered at 20 Å and used as reference for 3D-refinement of the dataset corresponding to the merged dataset of the individually subtracted 5 strands. The result of the refinement was low-pass filtered at 30 Å and used as reference for 3D-classification. The best 3D class was further refined leading to a focused refined map of the DNA strand.

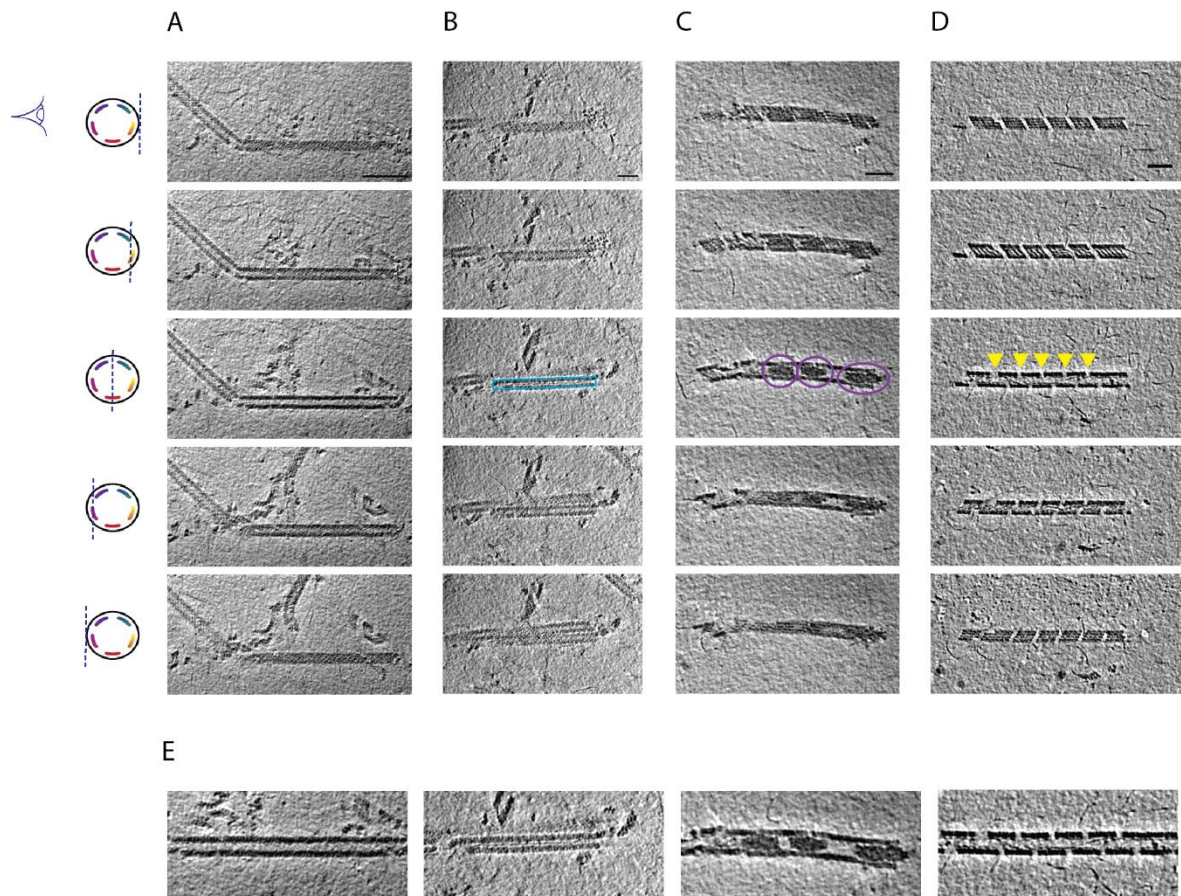


Fig. S11: Cryo-ET of Mimivirus genomic fiber. (Upper panel) Slices through tomograms exhibiting different features of compact, unwinding and broken genomic fibers of Mimivirus. (A) Slices through a cryo-tomogram focused on a long and broken fiber. Features of the protein shell are visible in tangential slices (top and bottom), while filamentous densities corresponding to DNA strands become visible when slicing deeper inside the fiber. Scale bar, 100 nm. (B) A straight filament running along the fiber symmetry axis has been observed in several cases (blue rectangle), which may correspond to a single or a bundle of DNA strands dissociated from the protein shell. (C) Large amorphous electron dense structures have been observed inside the lumen of the fiber (highlighted with purple circles). (D) DNA strands are often observed emanating from breaks along the genomic fiber, partially disassembling (indicated with yellow arrowheads). (E) Detail of the central slices through the genomic fibers showed in the third depicted slice in A-D. Thickness of the slices is 1.1 nm. Distance between the tomographic slices (from top to bottom) is 4.4 nm between the first and second and the fourth and fifth, and 6.6 nm between the third and second or fourth. The scheme on the left represents a cross-section of a cartoon representation of the 5-start genomic fiber depicted as a cylinder containing 5 strands of coloured DNA internally lining the helical protein shell. It also indicates the plane through which the genomic fiber is viewed as 2D slices extracted from the tomograms in Tomo. S1 (A), Tomo. S2 (B), Tomo. S3 (C), and Tomo. S4 (D). Scale bars (B, C, D), 50 nm.

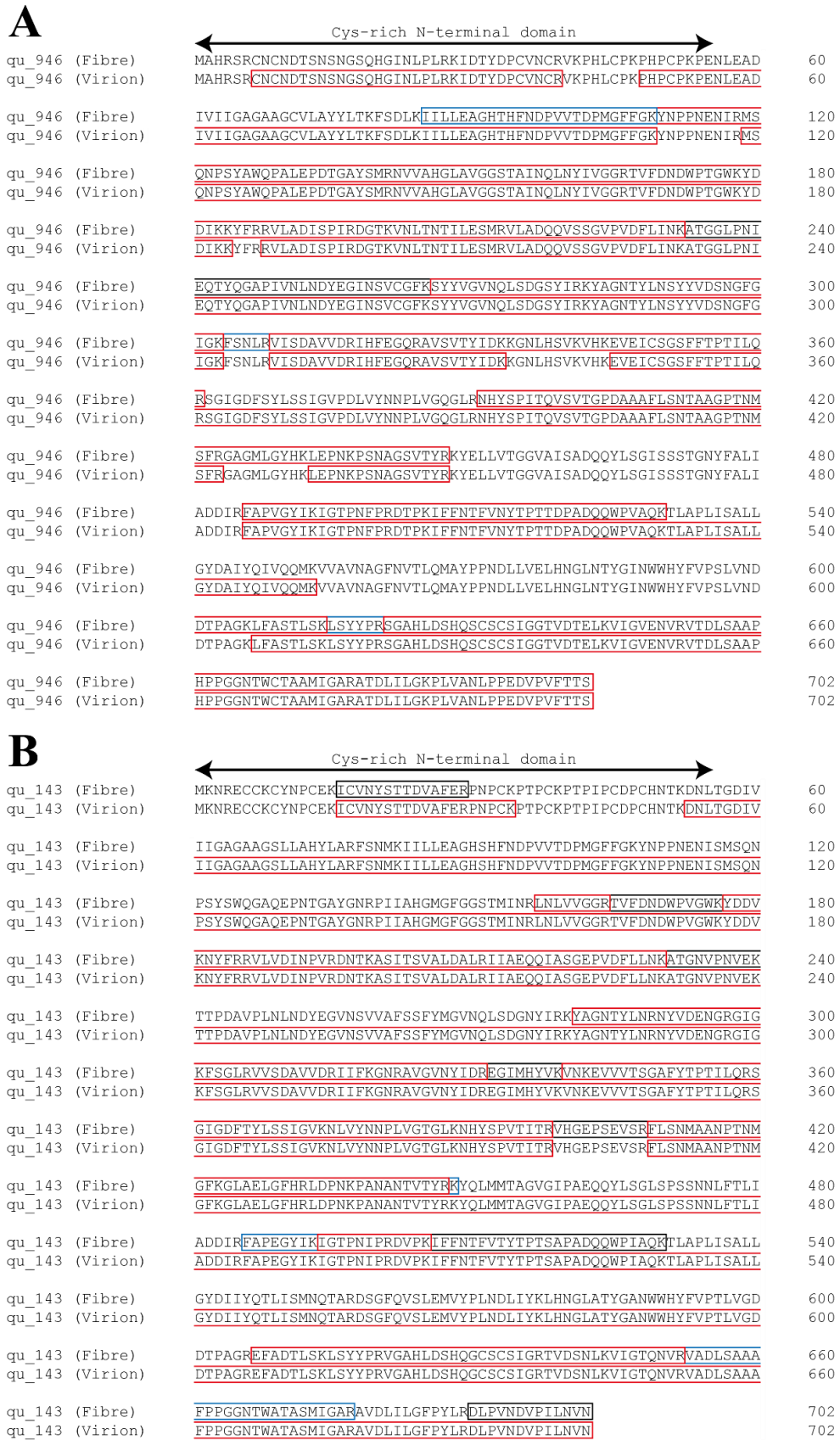


Fig. S12: Comparison of sequence coverages for qu_946 (A) and qu_143 (B) obtained by MS-based proteomic analysis of genomic fibers and total virions. Identified peptides are highlighted in red, blue and grey when identified respectively in three, two and one replicate of the purified genomic fiber.

Table S1: Mimivirus Reunion genomic fibers data statistics (33)

Mimivirus Reunion	5-start fiber			6-start fiber
	Asymmetric unit (CI1a)	Compacted helix (CI1a)	Relaxed helix (CI3a)	(CI2)
Dimensions and symmetries				
Protein shell width (external, internal) (Å)	-	286.2, 117.7	324.5, 168.5	312.0, 151.4
Shell thickness (Å)	-	84.2	78	80.3
DNA ring diameter (external, internal) (Å)	-	132.0, 93.15	-	163.6, 124.4
Spacing Shell-DNA	-	5.5	-	4.8
3D Refinement (Fig. S6-8)				
Symmetry imposed	C1	Helical	Helical, D5	Helical, C3
Helical parameters (rise, twist)	-	7.93 Å, -221.075°	31.11 Å, -23.975°	20.47 Å, 49.43°
Initial particle images (#)	418,041	418,041	107,004	162,379
Final particle images (#)	95,722	121,429	11,958	8,479
Initial model used	Low-pass filtered reconstruction from subtracted segments	Featureless cylinder		
Model resolution (Å) (masked)	3.3	3.7	3.7	4.0
FSC threshold	0.5	0.5	0.5	0.5
Asymmetric unit model statistics				
<i>Model composition</i>				
Non-hydrogen atoms	9,996	10,072	4,998	10,124
Protein residues	1,290	1,300	645	1,298
<i>R.m.s. deviations</i>				
Bond lengths (Å)	0.008 (0)	0.007 (0)	0.006 (0)	0.006 (0)
Bond angles (°)	1.134 (0)	1.194 (10)	0.846 (1)	0.802 (0)
<i>Validation</i>				
MolProbity score	2.18	2.73	2.36	2.16
Clashscore	8.20	16.18	17.12	14.27
Rotamers outliers (%)	2.05	4.61	1.49	0.00
<i>Ramachandran plot</i>				
Favoured (%)	91.60	91.13	91.76	91.58
Allowed (%)	8.40	8.87	8.24	8.42
Disallowed (%)	0.00	0.00	0.00	0.00

Table S2: Mass spectrometry-based proteomic analysis of A] three independent preparations of Mimivirus genomic fiber and B] one sample of purified Mimivirus virions. (ND: Not detected). RNA polymerase subunits are marked in red.

A

accession	protein name	molecular weight	peptides	Coverage %	iBAQ R1	iBAQ R2	iBAQ R3	Copies/fiber	Standard deviation
qu_946	GMC oxidoreductase	78892	59	65.88	25605966	59667499	95078727	95378	
qu_143	GMC-type oxidoreductase	76945	49	56.27	5056660	27839892	10688103		
qu_734	hypothetical protein	23302	5	29.28	2567070	6045037	7467041	7102	768
qu_313	kinesin-like protein	339986	135	37.95	29583	473	3596453	1112	1846
qu_446	Major capsid protein D13L	66124	21	38.21	246585	836883	690005	767	145
qu_431	Core protein	75338	19	21.79	142618	31426	1026459	468	446
qu_572	VVI8 helicase	79516	17	24.03	221920	ND	106288	393	420
qu_772	hypothetical protein	24047	8	34.4	108330	670995	86097	382	329
qu_384	Thioredoxin	39459	9	14.74	175615	238801	302348	360	162
qu_738	hypothetical protein	39948	6	15.54	150035	93504	379485	304	185
qu_196	putative amine oxidase	56642	11	26.52	36721	500469	23509	227	280
qu_76	collagen-like protein 1	91015	6	5.25	37893	478053	38102	224	260
qu_245	RNA polymerase subunit 5	23541	7	31.22	75069	45112	307708	187	121
qu_623	hypothetical protein	29447	3	8.49	100753	178920	19727	175	149
qu_351	hypothetical protein	30607	1	2.64	53353	180588	177860	174	20
qu_231	Topoisomerase I	96906	11	15.69	100666	ND	39460	174	196
qu_685	hypothetical protein	19573	1	7.57	70350	46933	ND	135	119
qu_366	Regulator of chromosome condensation	107437	11	14.33	57761	89643	109833	125	47
qu_409	hypothetical protein	30040	3	11.32	26557	142452	28594	88	65
qu_368	hypothetical protein	56316	4	8.04	30458	98708	64453	87	26
qu_493	DNA directed RNA polymerase subunit (Rpb3/11)	41630	8	24.09	30508	16795	162795	87	65
qu_268	hypothetical protein	38970	3	8.99	31211	36923	130386	85	40
qu_261-259-257-255	DNA directed RNA polymerase subunit 2	135691	13	11.57	28814	21461	113619	72	42
qu_752	orphan	34452	4	9.27	23162	2162	146936	69	65

qu_880	hypothetical protein	49215	5	9.93	21357	93652	39853	68	33
qu_464	hypothetical protein	139105	12	9.37	39403	16346	68323	67	53
qu_753	hypothetical protein	49938	6	12.86	14018	ND	93259	64	29
qu_379	DNA-directed polymerase II subunit N	RNA 8860	2	35.62	29494	14124	93245	64	42
qu_544	hypothetical protein	10721	2	11.83	26508	56949	47381	62	20
qu_424	hypothetical protein	87443	12	12.07	12589	610	158643	61	74
qu_530-532	DNA directed polymerase II subunit 1	RNA 119306	8	6.23	18279	10404	86427	49	34
qu_219	DNA-dependent polymerase subunit Rpb9	RNA 22289	2	19.79	11155	ND	51304	40	8
qu_773	hypothetical protein	26538	2	8.48	15353	32905	19722	34	15
qu_495	hypothetical protein	199755	11	6.59	10508	11663	53398	31	18
qu_629	Thiol oxidoreductase E10R	34053	2	7.19	ND	39151	11930	27	23
qu_582	hypothetical protein	16640	1	12.57	12335	12718	18499	23	13
qu_508	ankyrin repeat-containing protein	219141	5	2	2519	ND	35112	20	17
qu_947	endonuclease/exonuclease/ phosphatase	79875	1	1.72	3834	24132	8897	15	10
qu_710	Collagen triple helix repeat containing protein	191259	1	0.58	3963	25823	1854	14	13
qu_371	transcription termination factor	95426	4	6	9662	2229	8306	13	15
qu_686	NHL repeat-containing protein	43392	1	2	3438	15317	11025	12	4
qu_420	hypothetical protein	39401	1	3.12	6273	5066	12842	12	7
qu_347	Early transcription factor large subunit	245225	3	1.89	3038	ND	7791	8	2
qu_585	hypothetical protein	56754	1	2.51	ND	7107	3281	5	3
qu_546	hypothetical protein	86695	1	2.61	ND	2195	3619	3	1
qu_709	collagen-like protein 6	141539	1	1.21	ND	2012	1539	2	1

B

accession	protein name	molecular weight	peptides	Coverage %	iBAQ
qu_446	Major capsid protein D13L	66124	69	94.84	210053824
qu_143	GMC-type oxidoreductase	76945	78	93.73	186790085
qu_685	hypothetical protein	19573	6	32.43	174911824
qu_544	hypothetical protein	10721	6	43.01	120277696
qu_582	hypothetical protein	16640	5	40.72	116093496
qu_464	hypothetical protein	139105	125	67.04	107226726
qu_431	Core protein	75338	91	80.64	101971100
qu_773	hypothetical protein	26538	23	78.12	99393566
qu_669	Orphan	5784	2	98.33	92508352
qu_384	Thioredoxin	39459	27	53.47	66455090
qu_772	hypothetical protein	24047	22	86.24	53127153
qu_482	hypothetical protein	21099	14	64.36	45300565
qu_366	Regulator of chromosome condensation	107437	41	47.15	43178787
qu_946	GMC oxidoreductase	78892	50	77.67	41561796
qu_589	hypothetical protein	17955	10	81.88	32465195
qu_600	hypothetical protein	37211	38	70	28534896
qu_736	hypothetical protein	40921	26	77.54	28136889
qu_657	hypothetical protein	28864	2	7.43	27887883
qu_686	NHL repeat-containing protein	43392	20	75.75	27407813
qu_738	hypothetical protein	39948	9	18.08	25518798
qu_734	hypothetical protein	23302	8	31.53	25487740
qu_409	hypothetical protein	30040	18	82.64	25169756
qu_757	hypothetical protein	21968	11	72.16	24470704
qu_480	hypothetical protein	21376	12	70.9	23375851
qu_268	hypothetical protein	38970	34	85.22	20235521
qu_465	thioredoxin domain-containing protein	19438	11	43.29	19680372
qu_368	hypothetical protein	56316	38	67.22	15678817
qu_585	hypothetical protein	56754	26	56.56	15502792
qu_351	hypothetical protein	30607	16	66.42	13371044
qu_684	hypothetical protein	30286	6	59.34	13325675
qu_345	hypothetical protein	39318	17	33.62	13075398

qu_511	putative PAN domain-containing protein	24425	4	22.87	12445425
qu_515	hypothetical protein	25475	16	57.01	12413518
qu_514	hypothetical protein	63202	25	27.91	11786549
qu_420	hypothetical protein	39401	12	16.48	11185321
qu_423	hypothetical protein	91000	31	40.42	11166382
qu_775	hypothetical protein	32226	12	21.88	10813839
qu_307	Ricin-type lectin protein	22911	3	30.05	10519539
qu_824	putative PAN domain-containing protein	22435	4	29	10383817
qu_543	hypothetical protein	18141	3	22.62	9999289
qu_828	hypothetical protein	28776	13	68.09	9907607
qu_752	Orphan	34452	8	20.77	9661887
qu_367	hypothetical protein	21736	5	51.28	9189856
qu_644	hypothetical protein	37344	21	67.77	8623543
qu_623	hypothetical protein	29447	13	76.83	8397789
qu_557	putative triacylglycerol lipase	38826	36	80.99	8251842
qu_529	hypothetical protein glt_00638	9907	3	32.53	7975426
qu_500	Orphan	11233	2	24.49	7372987
qu_509	hypothetical protein	19344	9	44.12	7320892
qu_245	RNA polymerase subunit 5	23541	18	77.56	6774205
qu_767	hypothetical protein	37663	22	52.77	6545302
qu_683	low complexity hypothetical protein	47185	6	22.28	6521862
qu_692	hypothetical protein	26417	16	96.48	5818265
qu_616	uncharacterized N-acetyltransferase	46994	21	53.07	5610844
qu_617	hypothetical protein	11815	4	43.93	5271258
qu_629	Thiol oxidoreductase E10R	34053	16	56.85	5134527
qu_169	hypothetical protein	51058	27	65.59	4990008
qu_530-532	DNA directed RNA polymerase II subunit 1	119306	67	54.07	4778589
qu_646	uncharacterized cupin RmlC-type domain protein	18499	7	47.5	4728743
qu_280	uncharacterized WD repeat-containing protein	153562	25	25.85	4670418
qu_64	hypothetical protein	21868	5	20	4542134
qu_70	uncharacterized virion-associated membrane protein	39117	11	52.68	4370076
qu_880	hypothetical protein	49215	20	51.27	4315781
qu_371	Transcription termination factor	95426	48	62.67	4179959

qu_261-259-257-255	DNA directed RNA polymerase subunit 2	135691	59	53.9	4071877
qu_454	hypothetical protein	17244	4	64.78	4031133
qu_748	hypothetical protein	22233	7	57.14	3838958
qu_578	hypothetical protein	23850	5	17.37	3754039
qu_328	hypothetical protein	8110	2	40.85	3683040
qu_681	hypothetical protein	34943	3	9.52	3595732
qu_495	hypothetical protein	199755	90	53.82	3589218
qu_737	hypothetical protein	32336	8	39.27	3565424
qu_493	DNA directed RNA polymerase subunit	41630	18	44.26	3551856
qu_55	hypothetical protein	8296	3	39.19	3403650
qu_546	hypothetical protein	86695	50	68.72	3333680
qu_625	putative prolyl 4-hydroxylase	27901	9	45.87	3078983
qu_267	hypothetical protein	28538	3	14.55	3058533
qu_344	uncharacterized myristoylated membrane protein	29395	4	39.93	2959488
qu_769	putative chemotaxis protein CheD	31169	10	41.85	2945006
qu_196	putative amine oxidase	56642	19	43.81	2924113
qu_313	kinesin-like protein	339986	139	53.33	2911617
qu_220	DNA-directed RNA polymerase subunit 6	46141	11	30.75	2885042
qu_525	probable zinc-type alcohol dehydrogenase-like protein	47354	14	35.78	2756323
qu_424	hypothetical protein	87443	37	54.11	2688682
qu_205	probable glutaredoxin	12084	7	69.81	2630248
qu_519	hypothetical protein	20432	5	32.96	2620066
qu_404	probable mRNA-capping enzyme	136590	56	54.96	2518068
qu_361	poxvirus polyA polymerase catalytic subunit-like protein	67815	32	47.76	2471347
qu_398	DNA-directed RNA polymerase subunit	22532	10	61.31	2407246
qu_204	DNA topoisomerase 1b	39906	18	50	2271146
qu_405	divergent methyltransferase	40370	12	36.21	2145355
qu_618	hypothetical protein	11580	3	45.63	2106599
qu_419	hypothetical protein MIMI_R398	41246	11	37.85	1998969
qu_753	hypothetical protein	49938	20	50.71	1926494
qu_349	hypothetical protein	9695	2	30.59	1882708
qu_924	hypothetical protein	39477	17	55	1858931

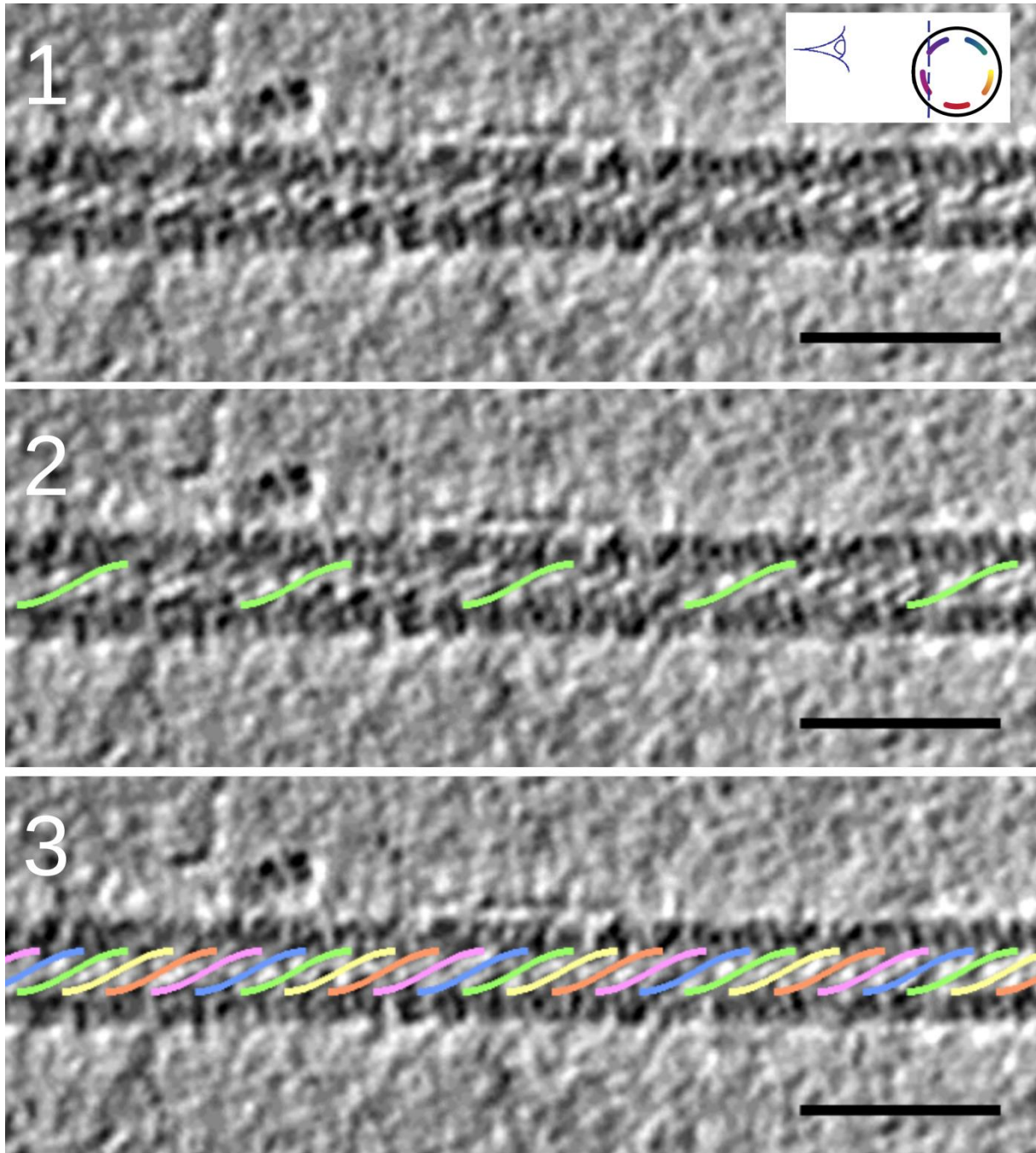
qu_170	hypothetical protein	50940	22	60.05	1822949
qu_325	putative protein phosphatase 2C	33565	8	31.16	1764492
qu_477	hypothetical protein	142243	46	43.99	1761589
qu_724	putative serine/threonine-protein kinase	80157	24	42.8	1721199
qu_508	ankyrin repeat-containing protein	219141	76	52.37	1649278
qu_697	hypothetical protein	62887	26	54.9	1622542
qu_399	putative NTPase	134005	47	47.17	1596235
qu_338	probable DNA polymerase family X	40598	21	53.11	1530525
qu_329	hypothetical protein	10979	3	45.26	1520464
qu_486	hypothetical protein	32747	7	27.76	1436853
qu_246	hypothetical protein	17750	6	62.16	1391920
qu_390	probable FAD-linked sulfhydryl oxidase	16981	7	62.24	1379940
qu_747	Serpin	46879	17	50.87	1379737
qu_639	structural PPlase-like protein	26569	8	31.62	1216625
qu_379	DNA-directed RNA polymerase II subunit N	8860	2	54.79	1197770
qu_438	hypothetical protein	56175	16	34.42	1173947
qu_643	hypothetical protein	38822	4	12.95	1169692
qu_547	hypothetical protein	76930	23	53.69	1163885
qu_932	putative lipocalin	19105	3	14.79	1096271
qu_347	Early transcription factor large subunit	245225	65	37.11	1085524
qu_656	putative tyrosine-protein phosphatase	24840	5	24.06	991502
qu_770	putative bifunctional metalloprotease/ubiquitin-protein ligase	100069	20	34.86	960569
qu_572	VVI8 helicase	79516	21	42.01	920005
qu_76	collagen-like protein 1	91015	3	3.61	914169
qu_682	phosphatidylethanolamine-binding protein-like protein	16882	9	83.92	864819
qu_596	putative ATP-dependent RNA helicase	66972	19	46.42	819446
qu_376	putative thiol protease	34896	13	60.93	766743
qu_563	hypothetical protein	59781	16	34.06	760199
qu_378	hypothetical protein	57328	7	20.32	734789
qu_327	Uncharacterized protein L309	36716	3	11.53	720399
qu_231	Topoisomerase I	96906	21	29.86	708206
qu_219	DNA-dependent RNA polymerase subunit Rpb9	22289	2	19.79	683379
qu_430	hypothetical protein	20862	4	38.38	662120

qu_383	hypothetical protein	30954	4	29.01	649615
qu_346	uncharacterized metallopeptidase WLM domain protein	22781	6	37.56	599956
qu_23	hypothetical protein	21233	3	19.13	592113
qu_558	XRN 5'-3' exonuclease	93111	24	35.92	573028
qu_421	F10-like kinase	54385	11	27.84	550330
qu_312	peptidase C19 subfamily protein	51173	9	28.76	538715
qu_496	hypothetical protein	30933	5	35.91	521884
qu_324	hypothetical protein	19980	3	28.4	510212
qu_412	hypothetical protein	89610	12	23.59	486614
qu_335	probable formamidopyrimidine-DNA glycosylase	33463	13	60.63	456129
qu_900	hypothetical protein	11477	3	31	455575
qu_382	hypothetical protein	21290	7	44.63	455329
qu_638	hypothetical protein	11215	1	12.63	448838
qu_320	putative serine/threonine-protein kinase	47356	7	26.7	387208
qu_678	hypothetical protein	59156	5	12.36	370254
qu_322	NAD-dependent DNA ligase	72056	12	30.19	370074
qu_373	hypothetical protein	33827	8	42.81	324966
qu_584	hypothetical protein	35586	7	21.75	313721
qu_571	hypothetical protein	32361	9	24.73	296379
qu_411	hypothetical protein	127231	13	16.9	270613
qu_221	hypothetical protein	45001	7	18.49	243762
qu_762	hypothetical protein	13377	2	21.74	237330
qu_729	Uncharacterized protein L684	56486	7	20.41	226886
qu_663	hypothetical protein	36625	5	20.19	206880
qu_568	putative ATP-dependent RNA helicase	51600	7	24.49	190886
qu_750	hypothetical protein	16574	2	15.56	169202
qu_768	endonuclease VIII-like protein	37647	3	10.09	156676
qu_733	endonuclease for the repair of UV-irradiated DNA	39578	5	23.01	154909
qu_513	hypothetical protein	10593	2	45.16	153955
qu_434	hypothetical protein	42079	5	20.56	144052
qu_350	hypothetical protein	20898	3	28.81	142240
qu_440	uncharacterized short-chain type dehydrogenase/reductase	37903	3	13.16	132212
qu_576	Chain A2C A Megaviridae Orfan Gene Encodes A New Nucleotidyl	45873	6	18.6	111651

	Transferase 4AMQ_A				
qu_227	hypothetical protein	87553	8	16.8	99165
qu_388	putative ATP-dependent RNA helicase	208612	17	15.01	89684
qu_394	hypothetical protein	29429	2	9.6	89379
qu_484	hypothetical protein	24362	1	3.83	81052
qu_668	Bulb-type mannose-specific lectin	21574	1	14.07	78249
qu_393	putative ankyrin repeat protein	90149	3	3.92	76679
qu_909	hypothetical protein	36665	3	13.02	68006
qu_475	hypothetical protein	52379	2	13.12	63506
qu_466	putative ADP-ribosyl glycohydrolase	58740	3	9.75	58759
qu_620	hypothetical protein	44621	2	6.55	56022
qu_395	uncharacterized glycosyltransferase	29888	2	13.94	52627
qu_315	putative endonuclease 4	32949	2	14.58	51762
qu_536	hypothetical protein	36584	1	4.06	45593
qu_297	hypothetical protein	14835	2	11.11	40398
qu_291	hypothetical protein	23506	1	5.19	39136
qu_243	putative Zn-dependent peptidase	50666	2	4.09	37619
qu_710	Collagen triple helix repeat containing protein	191259	2	2.25	25872
qu_709	collagen-like protein 6	141539	2	3.35	22882
qu_225	RAS family GTPase	23738	1	5.31	20950
qu_248	Collagen triple helix repeat containing protein	44720	1	2.72	20679
qu_492	putative bifunctional polynucleotide phosphatase/kinase	49171	2	8.08	15756
qu_963	putative Fe2OG oxygenase family oxidoreductase	25167	1	6.19	15033
qu_418	hypothetical protein	64964	1	3.34	14304
qu_461	Capsid protein	69341	2	4.57	11635
qu_665	hypothetical protein	25427	1	7.49	ND
qu_207	collagen triple helix repeat containing protein	131064	1	1.44	ND

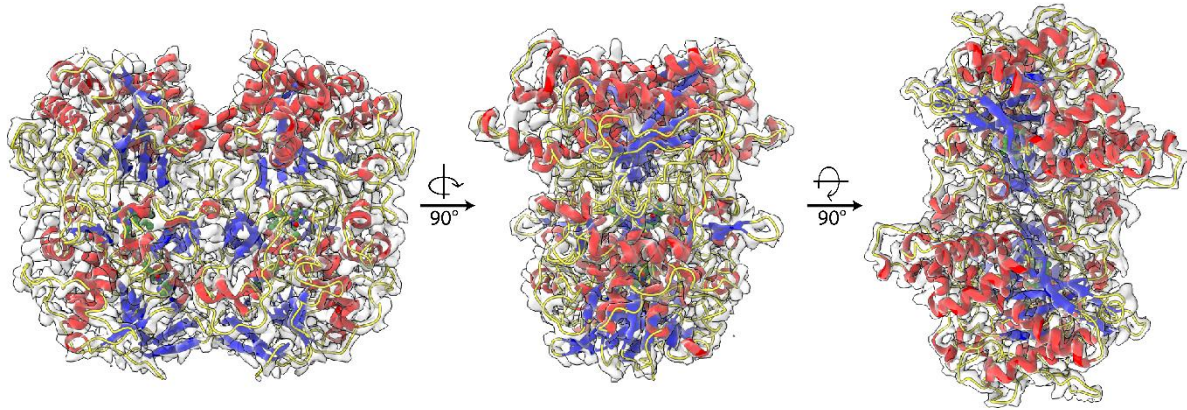
Table S3: Data acquisition parameters for Cryo-EM

	Single-particle analysis	Tomograms	Bubblegrams
Hardware			
Microscope	Titan Krios	Titan Krios	Titan Krios
Detector	K2	K3	K3
Accelerating voltage (kV)	300	300	300
Pixel size (Å)	1.09	1.40	1.09
Data acquisition parameters			
Nominal magnification	130,000	64,000	81,000
Square pixel (Å ²)	1.1881	3.24	1.1881
Dose per physical pixel per second	7.5	15	15
Flux (e-/Å ² /s)	6.3	4.6	12.64
Exposure time (s)	8	0.8	2-6
Total exposure (e-/Å ²)	50.5	3.68	25-75
Number of frames	40	4	20-60
Dose per frame (e-/Å ²)	1.25	0.92	1.25
Defocus range (µm)	-1 to -3	-2 to -4	-3 to -5
Apertures (Size in microns)			
C1	2,000	2,000	2,000
C2	70	50	50
Microprobe/Nanoprobe	Np	Np	Np
Objective aperture size (µm)	100	100	100
Energy filter			
Slit (eV)	20	20	20



Video S1: Superimposition of the DNA model on a tomogram slice. 1] one slice of the tomogram where helical strings can be recognized, 2] One strand of the DNA model superimposed on one helical string, 3] 5-start DNA model superimposed on the strings. Scale bar 50 nm.

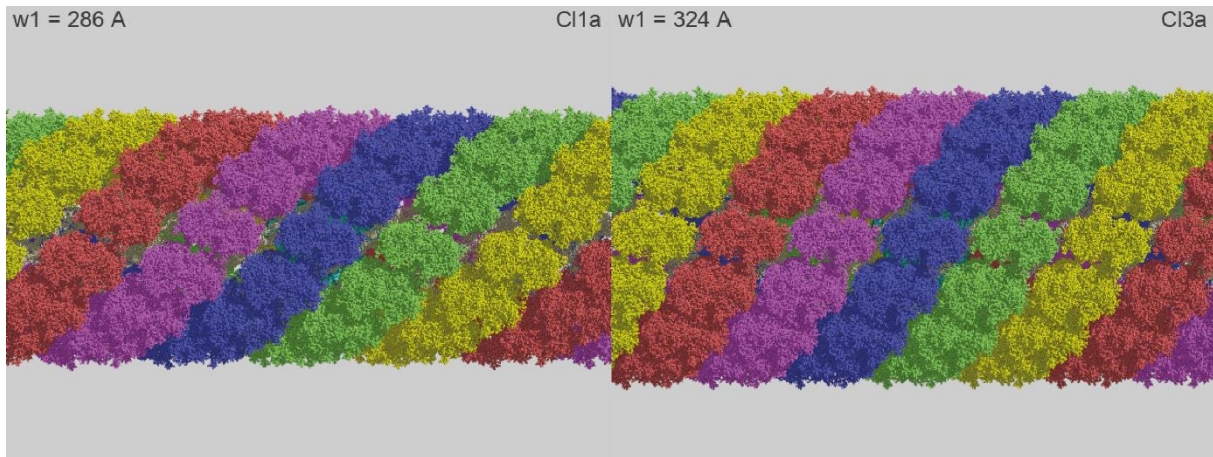




Video S2: Illustration of the fit of the GMC-oxidoreductase into the asymmetric unit focused refined C11a map.

View of the overall fit of the GMC-oxidoreductase qu_146 refined model into the C11a map with a zoom on the FAD ligand into the map. The video has been made in Chimera 1.14.





Video S3: Illustration of the relaxation of the genomic fiber: The relaxation of the helical structure from Cl1a to Cl3a induces a loss of the DNA strands prior to the loss of one start of the protein shell after another once the fully relaxed structure appears as a ribbon. The RNA polymerase is shown in cyan. This video is based on two helical structures described in this work, at relaxing states corresponding to Cl1a and Cl3a, while all intermediate states were obtained by linear interpolation of the helical parameters.

