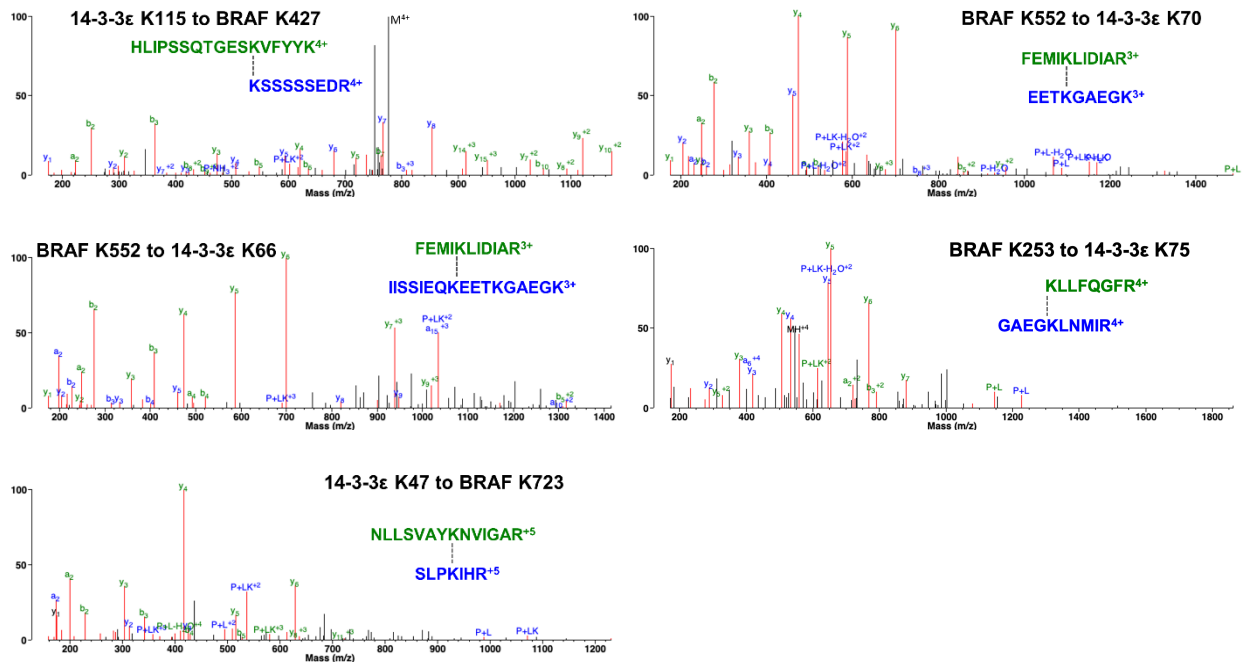
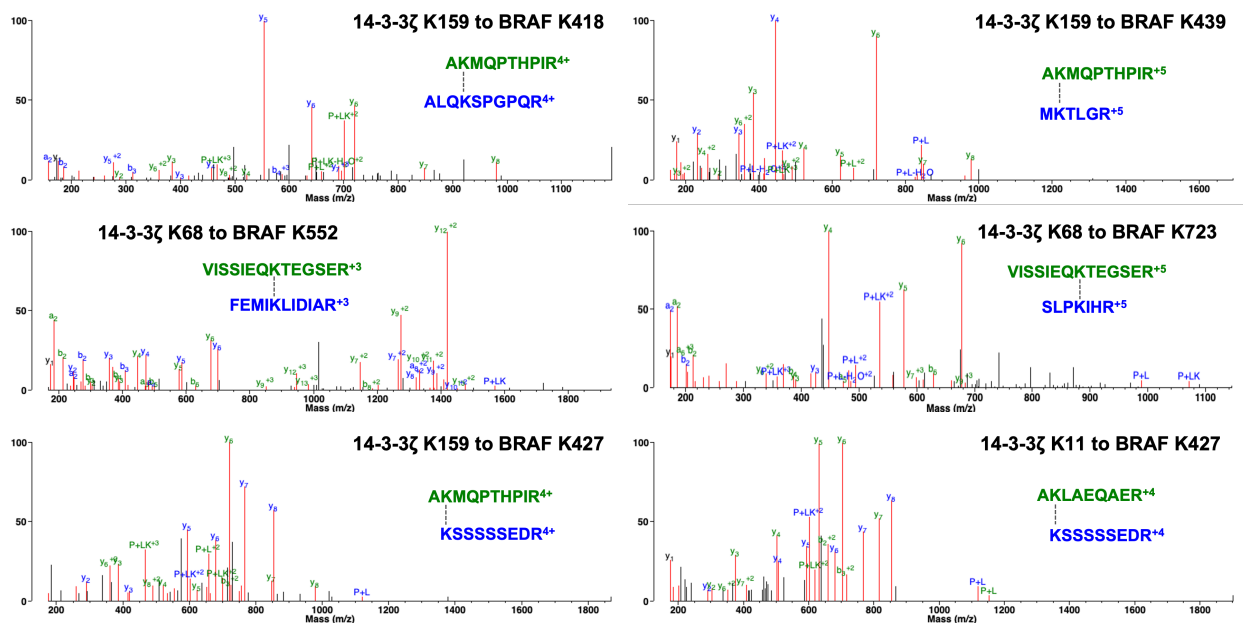


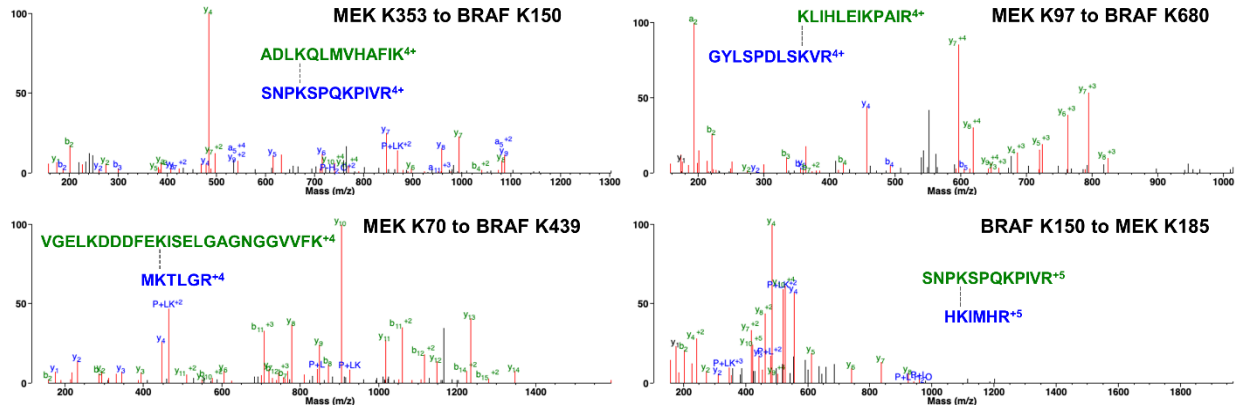
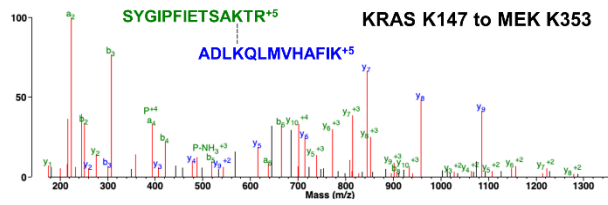
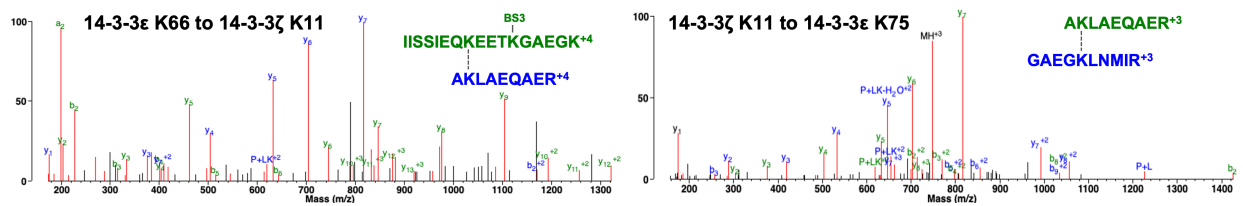
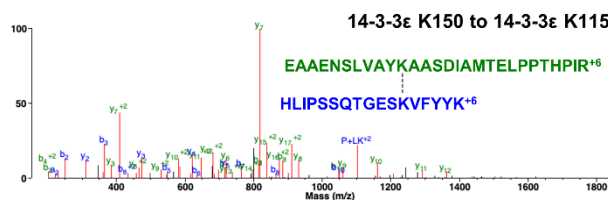
MS/MS spectra of **A)** BRAF–14-3-3 ϵ , **B)** BRAF–14-3-3 ζ , **C)** BRAF–MEK, **D)** KRAS–MEK, **E)** 14-3-3 ϵ –14-3-3 ζ , **F)** 14-3-3 ϵ –14-3-3 ϵ , **G)** MEK–MEK, **H)** 14-3-3 ζ –14-3-3 ζ , and **I)** BRAF– BRAF crosslinked peptides. B and y ions originating from each crosslinked peptide are colored in blue or green, corresponding to the peptide sequence of the same color. Cases in which fragmentation occurred across the linker are indicated as “P+L” or “P+LK”, ions consisting of the peptide and linker or the peptide, linker and linked Lys residue of the opposing peptide, respectively.

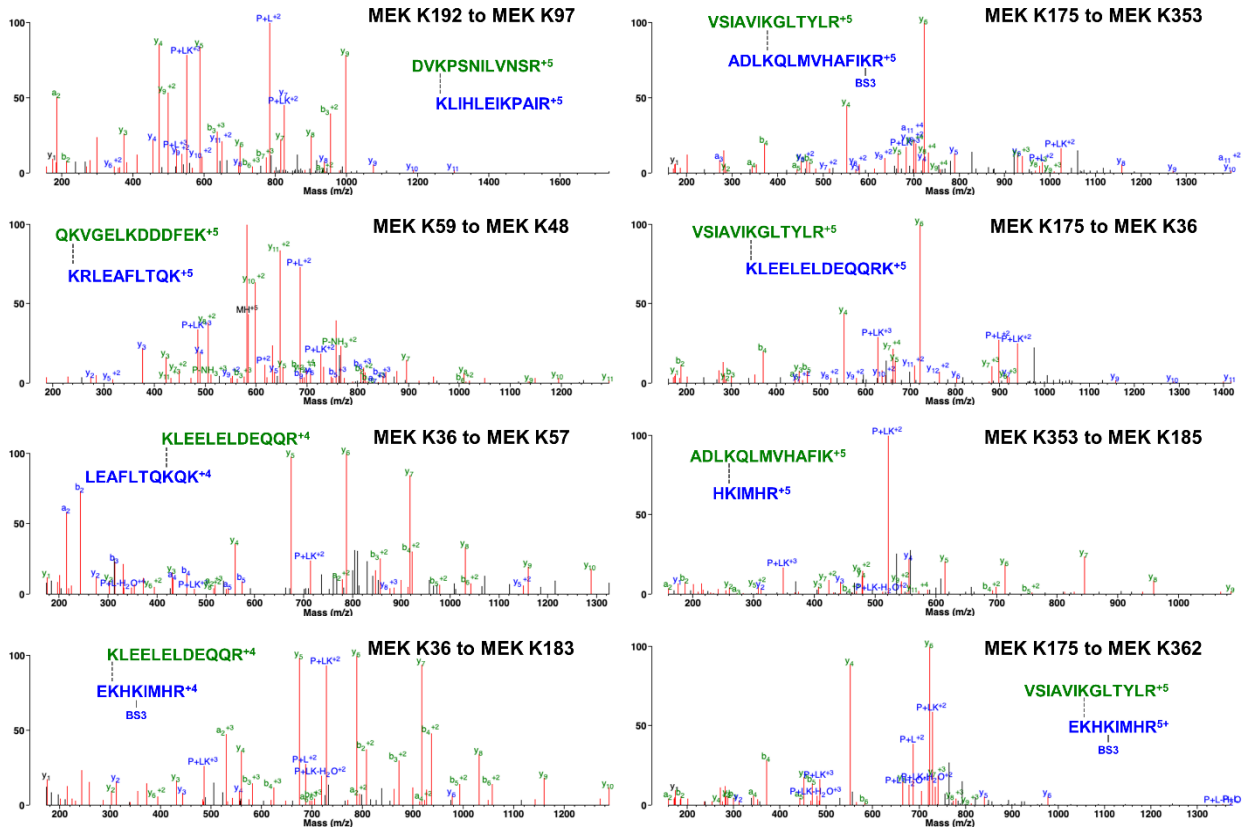
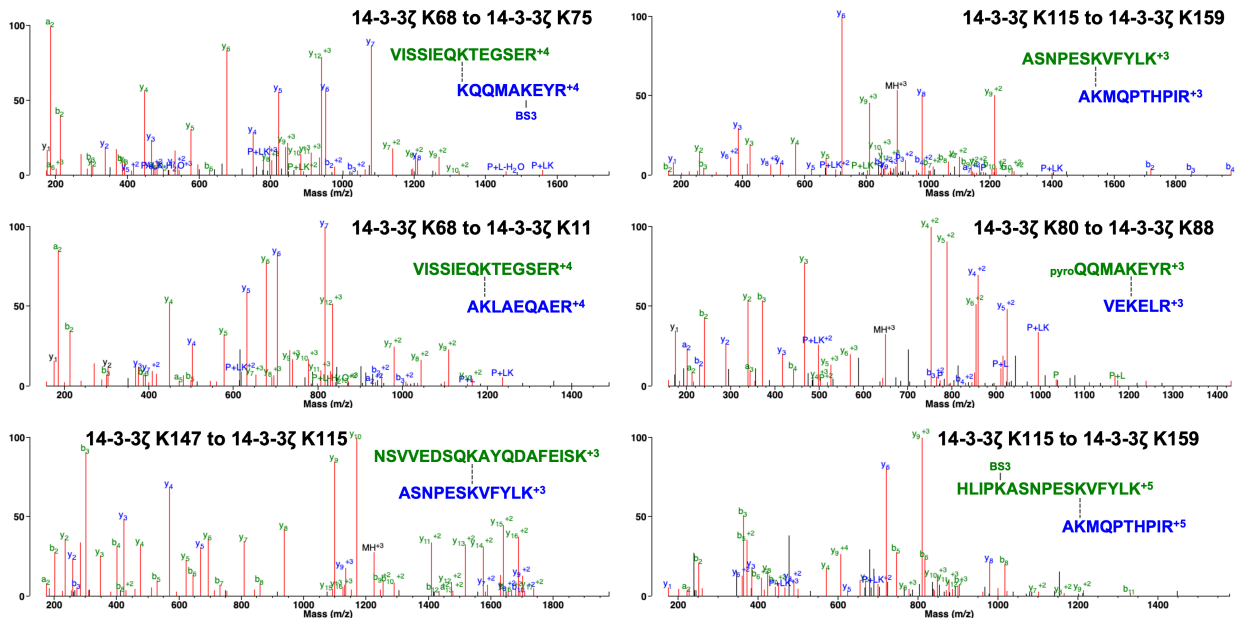
A



B



C**D****E****F**

G**H**

I

