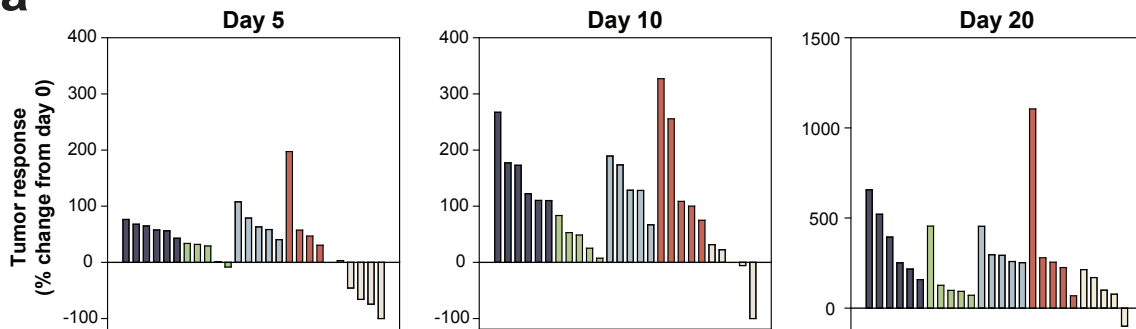


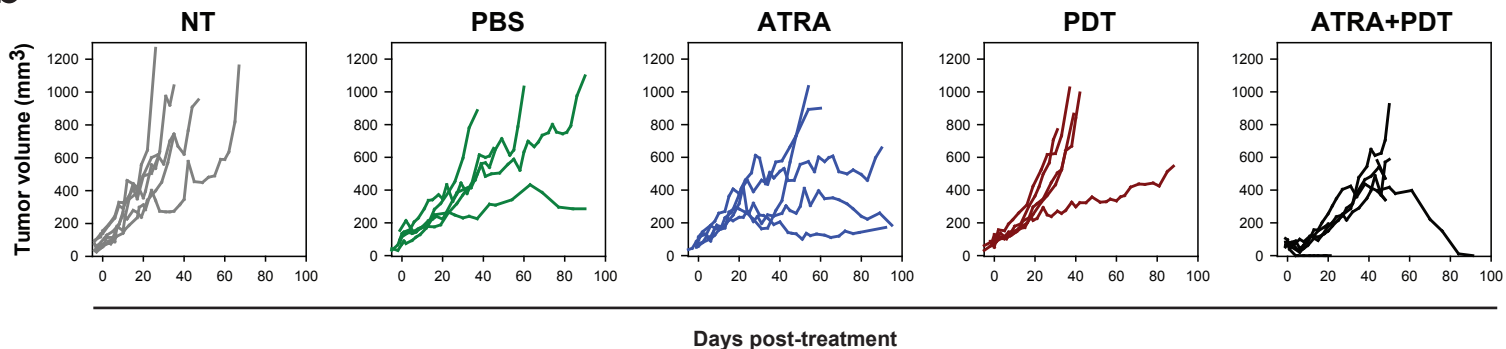
Supplementary Figure 8

a

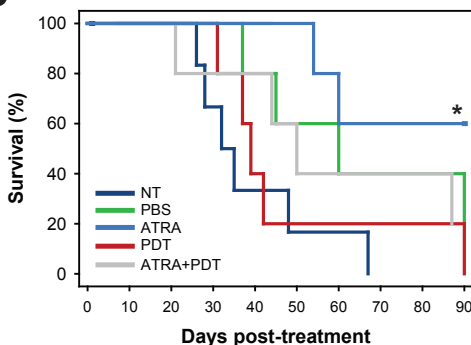


■ No treatment ■ PBS ■ ATRA ■ PDT ■ ATRA+PDT

b



c



Treatment group	Mean time to reach endpoint (days)	S.E.	No. of animals
NT	38.0	6.0	6
PBS	64.4	11.1	5
ATRA	76.8	8.1	5
PDT	47.8	10.7	5
ATRA+PDT	58.4	13.2	5

d

Tumor size (mm³) at day 90

PBS	ATRA	PDT	ATRA+PDT
1098.1	658.0	1022.4	0
285.9	259.9		
	172.2		