

A Bayesian analysis of birth pulse effects on the probability of detecting Ebola virus in fruit bats

David R.J. Pleydell ^{1,2,3}, Innocent Ndong Bass ⁴, Flaubert Auguste Mba Djondzo ⁴, Dowbiss Meta Djomsa ⁴, Charles Kouanfack ⁴, Martine Peeters ⁵
Julien Cappelle ^{2,3}

¹ INRAE, UMR ASTRE, F-34398 Montpellier, France

² CIRAD, UMR ASTRE, F-34398 Montpellier, France

³ ASTRE, CIRAD, INRAE, Univ Montpellier, Montpellier, France

⁴ Laboratoire de Virologie-Cremer, Institut de Recherches Médicales et d'Études des Plantes Médicinales (IMPM), Yaoundé P.O. Box 13033, Cameroon

⁵ TransVIHMI, University of Montpellier (UM), French Institute of Health and Medical Research (INSERM), French National Research Institute for Sustainable Development (IRD), Montpellier, France

Correspondence: david.pleydell@inrae.fr

Abstract

Since 1976 various species of Ebolavirus have caused a series of zoonotic outbreaks and public health crises in Africa. Bats have long been hypothesised to function as important hosts for ebolavirus maintenance, however the transmission ecology for these viruses remains poorly understood. Several studies have demonstrated rapid seroconversion for ebolavirus antibodies in young bats, yet paradoxically few PCR studies have confirmed the identity of the circulating viral species causing these seroconversions. The current study presents an age-structured epidemiological model that characterises the effects of seasonal birth pulses on ebolavirus transmission within a colony of African straw-coloured fruit bats (*Eidolon helvum*). Bayesian calibration is performed using previously published serological data collected from Cameroon, and age-structure data from Ghana. The model predicts that annual birth pulses most likely give rise to annual outbreaks, although more complex dynamic patterns – including multi-annual cycles and skip years – may be possible. Weeks 30 to 31 of each year were estimated to be the most likely period for isolating the circulating virus in Cameroon. The probability that a previous PCR campaign failed to detect Ebola virus, assuming that it was circulating, was estimated to be one in two thousand. This raises questions such as (1) what can we actually learn from ebolavirus serology tests performed without positive controls? (2) are current PCR tests sufficiently sensitive? (3) are swab samples really appropriate for ebolavirus extraction? The current results provide important insights for the design of future field studies aiming to extract Ebola viruses from sylvatic hosts, and can contribute to risk assessments concerning the timing of zoonotic outbreaks.

Keywords: age-structured model; Bayesian; bifurcation; birth pulse; chaos; dynamics; Ebola; epidemiology; fruit bat; maternal immunity; seasonality; skip year; recurrence plot; *Eidolon helvum*; bats; zoonoses

Introduction

Bats have been implicated as reservoir hosts to numerous viruses of zoonotic or animal health importance, including: Hendra virus, Marburg virus, Middle East respiratory coronavirus (MERS-CoV), Nipah virus, severe acute respiratory syndrome coronavirus (SARS-CoV), SARS-CoV-2 and Swine acute diarrhoea syndrome corona-virus (Letko et al., 2020). This list of bat-borne emerging viruses is thought to also include filoviruses of the *Ebolavirus* genus (Caron et al., 2018; Feldmann et al., 2020; Leroy et al., 2005). Indeed, the filovirus-like VP35 gene is estimated to have been maintained in bat genomes for 13.4 million years (Taylor et al., 2011), which provides evolutionary support for the long-term exposure of bats to filoviruses. However, despite numerous outbreaks of Ebola in equatorial Africa since 1976 – where fatality rates typically fall in the range of 40-70% (Jacob et al., 2020; Munster et al., 2018) – the hypotheses that (i) bats provide sylvatic reservoirs for Ebola viruses, and (ii) that these reservoirs contribute to spillover events, remain unconfirmed. Moreover, the eco-epidemiology of Ebola virus remains poorly understood, and empirical evidence for bats functioning as primary maintenance reservoirs for Ebola viruses remains non-conclusive (Olival and Hayman, 2014).

Serological data shows that some bat species express high seroprevalence for Ebola virus (De Nys et al., 2018; Hayman, Yu, et al., 2012). But serology is hard to interpret in bats without positive controls, and there is a paradoxical discrepancy between serological data and viral detection (Caron et al., 2018). Indeed, no Ebola virus has ever been isolated from bats, and only a few individuals of three bat species have tested positive by polymerase chain reaction (PCR) for Ebola virus (Leroy et al., 2005) – a result that remains to be replicated despite extensive sampling. Recent longitudinal monitoring of a straw-colored fruit bat (*Eidolon helvum*) population in Cameroon has shown extensive seroconversion of young (juvenile and sexually immature adult) bats over a period of a few months, suggesting active Ebola virus circulation - however, no bat tested positive for Ebola virus by PCR during that study (Djoms et al., 2022). Another *E. helvum* study in Guinea provided similar results, with seroprevalence decreasing over the first months of life and increasing again in the first years of adult life, but again, no bats were found to be PCR positive (Champagne et al., Submitted).

Modelling is being increasingly used to help understand the interplay between ecological and epidemiological dynamics in bats (Glennon et al., 2019; Hayman, 2015; Peel, KS Baker, Hayman, Broder, et al., 2018). Considerable attention has been paid to the effects of seasonal birth pulses on the pool of susceptible individuals and subsequent epidemiological consequences (Hranac et al., 2019; Peel, Pulliam, et al., 2014). For example, strong seasonal patterns in the prevalence of rabies in bats have been attributed to epidemiological consequences of birth pulses (George et al., 2011), and the biannual birth pulses of some Egyptian fruit bat populations are thought to increase the probability of pathogen maintenance (Hayman, 2015). Modelling has also indicated that maternally-derived antibodies can contribute to viral maintenance (Hayman, Luis, et al., 2018).

In order to explore the enigmatic discrepancy between Ebola serology and virology data, we developed an age-structured epidemiological model that included seasonal birth pulses and waning immunity, and used Bayesian techniques to fit the model to longitudinal *E. helvum* serology data from Cameroon (Djoms et al., 2022). Our three main objectives were as follows. First, to quantify uncertainty in the parameters and dynamics of the model given the seroprevalence data of Djoms et al. (2022). Second, to quantify the probability of not detecting any PCR positive bats given the sampling scheme of the Djoms et al. (2022) study. Third, to identify whether seasonal birthing patterns can help identify optimal time-windows for Ebola virus detection. This modelling work has identified potentially important biological parameters that can help explain the observed serology dynamics, and provides insights that can help improve the efficiency of surveillance strategies for detecting Ebola virus in bats. In particular, these analyses provide insights into practical questions concerning the establishment of adequate sampling efforts for virus isolation, and raise questions concerning the meaning of positive serological samples from bats.

Material and methods

Study site and eco-epidemiological data

Our analyses were based primarily on data from a longitudinal serology survey at an *E. helvum* colony in Yaounde, Cameroon (Djoms et al., 2022). Although various antigens were used for serological testing in that study, we exclusively used data from the Res1GP.ZEBVkiss antigenic test – a test based on the glycoprotein of Zaire Ebola virus. We selected this data-set because, among all antigenic test used, the Res1GP.ZEBVkiss test generated the highest seropositive rate and the strongest seasonal signal. This data provided information concerning seasonal variation in the presence of four different age classes: pups (*P*) - young non-weaned bats that remain attached to their mothers; juveniles (*J*) - weaned young, that do not yet display wrist ossification; immature adults (*I*) - large bats with ossified wrists but without any sign of sexual maturity; and adult bats (*A*). Pups were not sampled directly, however, lactating females provided a proxy for their presence. A summary of this data is provided in table 1.

Date	Juvenile		Immature		Adult		Female Adults	
	Neg	Pos	Neg	Pos	Neg	Pos	Lactating	Not Lactating
2018-12-07	0	0	2	0	10	8	0	8
2019-01-26	0	0	0	0	45	53	0	42
2019-03-03	0	0	0	0	10	7	1	7
2019-04-02	12	1	0	0	50	24	46	9
2019-05-07	116	1	0	0	21	10	20	6
2019-06-16	71	1	0	0	4	6	0	3
2019-07-17	13	4	67	10	27	11	0	16
2019-09-17	1	0	11	26	3	11	0	3
2019-10-15	0	0	16	22	15	16	0	11
2019-11-15	0	0	13	51	31	20	0	24

Table 1. Summary of *E. helvum* serology and lactation data from Yaounde, Cameroon. Negative and positive results for the Res1GP.ZEBVkiss antigenic test are shown for captured bats of three age classes. The number of captured adult female bats either lactating or not lactating are also shown. Lactation was used as a proxy for inferring seasonality in the presence of pups. A full description of this data is available in Djoms et al. (2022).

To help estimate adult mortality rates we used tooth cementum annuli data from 294 adult bats sampled in Ghana (Peel, KS Baker, Hayman, Suu-Ire, et al., 2016). Thus, we assume that the age structures at the sampled colonies in Ghana and Cameroon are equivalent.

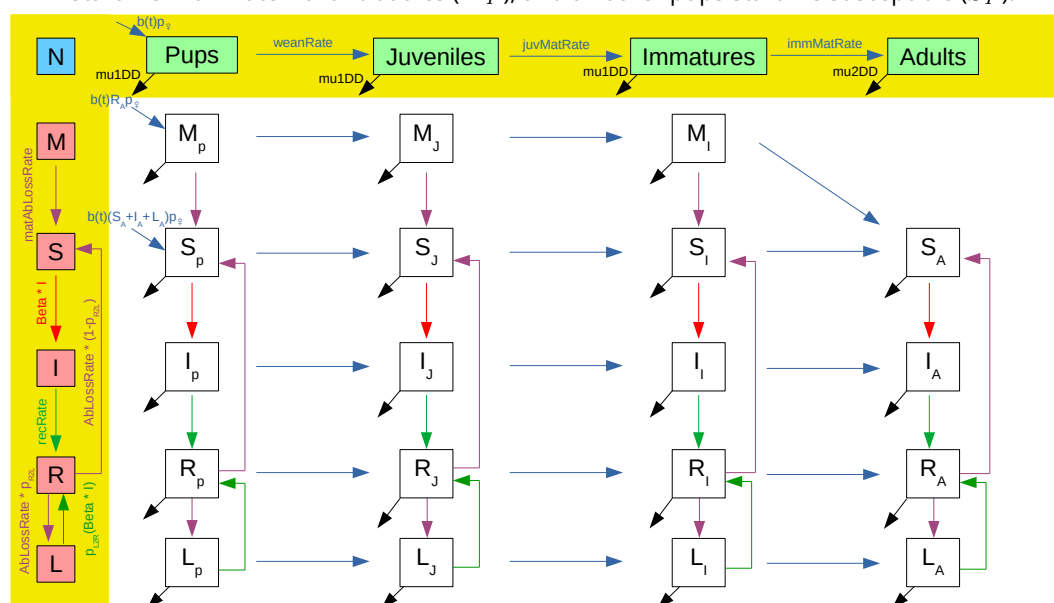
Mechanistic model

A system of ordinary differential equations was developed to characterise Ebola transmission in an age-structured *E. helvum* population – this system is depicted graphically in figure 1 and algebraically in equations 1-19. A list of model parameters is presented in table 2. Age structure in the model was defined using the same four age classes recorded in the field (see above), namely: pups (*P*); juveniles (*J*); immature adults (*I*); and adult bats (*A*). Five epidemiological classes were used: protected by maternal antibodies (*M*); susceptible (*S*); infected (*I*); recovered (*R*); long-term immunity (*L*). For simplicity, it was assumed that each year is exactly 52 weeks long, and weeks are used as our time unit throughout (unless stated otherwise).

The epidemiological model assumes that recovered individuals can transition to one of two classes – either they lose their immunity and return to being susceptible, or they enter a state of long-term immunity in which anti-bodies are not expressed unless they become re-exposed to the virus. Such a long-term immunity class

has proved useful in modelling other bat-virus systems (Brook et al., 2019), and was included to avoid incompatibility between (i) rapid seroconversion among immature adults (and some juveniles), with seroprevalence reaching 60-80% in immatures, and (ii) a global seroprevalence of just 43% among all tested adults (figure 3). It was assumed that bats in the recovered and maternal antibody classes would express sufficient quantities of antibodies to test seropositive, whereas bats in all other epidemiological classes would test seronegative. We associated two parameters with the long-term immunity class: p_{R2L} , the proportion of all individuals leaving the recovered class (i.e. losing antibodies) that acquire long-term immunity, as opposed to losing immunity and becoming susceptible again; and p_{L2R} , the proportion of exposures to the virus that reinitialise anti-body production in bats with long-term immunity. Given a lack of evidence for vertical transmission for the related Marburg virus in Egyptian fruit bats (Towner et al., 2009), we assumed infectious females could only produce susceptible pups. We also assumed that the number of adult bats still expressing maternal antibodies was negligible, and thus omitted that category to reduce computation time.

Figure 1. Schematic diagram of an age-structured MSIRL model used to analyse Ebola serology dynamics in *Eidolon helvum* from Yaounde, Cameroon. The total population N is divided into four age classes – pups (P), juveniles (J), immature adults (I) and adults (A) – and five epidemiological classes – maternal anti-bodies (M), susceptible (S), infected (I), recovered (R) and long-term immunity (L). Maturation through the age classes is controlled by a series of pulse functions (see supplementary materials), which lag behind a seasonal birth pulse. Density dependant mortality rates, $\tilde{\mu}_J$ and $\tilde{\mu}_A$, are specified for first-year and older individuals respectively. Anti-bodies are assumed detectable in individuals of the M and R compartments and undetectable for all other compartments. It is assumed that all pups from recovered mothers ($p_R R_A$) start life with maternal antibodies (M_P), and all other pups start life susceptible (S_P).



Seasonal demographic dynamics were controlled via four pulse functions, which restrain when certain birth or maturation processes can or cannot occur. These functions are essentially smoothed (i.e. continuous) step functions that toggle whether or not a given step in the life cycle can be made at a given time. Each pulse function has three parameters: 1) the pulse start time; 2) the pulse end time; 3) and the rate at which individuals mature, or give birth, during the pulse. Nine of the twelve pulse function parameters were estimated as free parameters, whereas the three maturation pulses were constrained to end two weeks prior to the start date of the preceding pulse function of the following year (see table 2). This two week buffer ensured that individuals joining a given age class could not immediately mature to the following age class. A two week buffer size was chosen so that: 1) the buffer was large enough for overlap between the continuous pulse functions to be negligible; 2) each pulse function was wide enough so that only a negligible number of individuals remained in

the age class when the maturation rate returned to zero. Further details of the pulse functions are provided in the [supplementary information](#).

114

115

Parameter	Description	Prior or function
$b(t)$	Birth rate	Pulse function
$m_P(t)$	Maturation rate, pups	Pulse function
$m_J(t)$	Maturation rate, juveniles	Pulse function
$m_I(t)$	Maturation rate, immature adults	Pulse function
b_{Start}	Start of birth pulse	Gamma(shape=5, scale=2)
d_{Birth}	Duration of birth pulse	Gamma(shape=5, scale=1)
b_{Stop}	End of birth pulse	$b_{\text{Start}} + d_{\text{Birth}}$
p_{Birth}	Prop. females contributing to birth pulse	Beta(171.5, 8.1)
p_{\varnothing}	Prop. females in population	0.5
\hat{m}_P	Maximum pup maturation rate	Gamma(shape=1, scale=-log(0.01)/8)
\hat{m}_J	Maximum juvenile maturation rate	Gamma(shape=1, scale=-log(0.01)/8)
\hat{m}_I	Maximum immature maturation rate	Gamma(shape=1, scale=-log(0.01)/8)
m_P^{Start}	Start of pup maturation pulse	Uniform(0, 104)
m_J^{Start}	Start of juvenile maturation pulse	Uniform(0, 104)
m_I^{Start}	Start of immature maturation pulse	Uniform(0, 104)
m_P^{Stop}	End of pup maturation pulse	$b_{\text{Start}} + 50$
m_J^{Stop}	End of juvenile maturation pulse	$m_P^{\text{Start}} + 50$
m_I^{Stop}	End of immature maturation pulse	$m_J^{\text{Start}} + 50$
μ_A^{-1}	Baseline adult life expectancy	Gamma(mean=10 × 52, sd=4 × 52)
\mathcal{R}_S	Survival ratio (young/adult)	Beta(4.7, 1.6)
μ_Y	Additional mortality in young bats	$-\log(\mathcal{R}_S)/52$
K	Density dependence parameter	100000
N_0	Population size at t_0	Gamma(shape=500, scale=1000)
p_0^{Age}	Prop. of each age class at t_0	Dirichlet(0, 0, 1.0, 3.78)
ϕ_{I0}	Prop. of immatures in M, S, I, R, L at t_0	Dirichlet(0, 1, 1, 1, 1)
ϕ_{A0}	Prop. of adults in S, I, R, L	Dirichlet(1, 1, 1, 1)
β	Transmission rate	Gamma(shape=1, scale=10 ⁻⁵)
ρ	Antibody acquisition (recovery) rate	Gamma(shape=1, scale=1)
α_M^{-1}	Duration of maternal antibodies	Uniform(0, 20 × 52)
α^{-1}	Duration of antibody protection	Gamma(shape=1, scale=10 ¹¹)
p_{R2L}	Prob. long-term immunity after antibody loss	Beta(1,1)
p_{R2S}	Prob. losing immunity after antibody loss	1 - p_{R2L}
p_{L2R}	Prob. antibodies re-acquired on re-exposure	Beta(1,1)

Table 2. Parameters, priors and functions used for modelling the dynamics of Ebola virus circulation in the *Eidolon helvum* population of Yaounde, Cameroon (see Fig. 1). These are presented in groups corresponding to: the four pulse functions; birth pulse parameters; maturation pulse parameters; mortality parameters; initial populations; and epidemiological parameters. Parameter estimation for the priors of p_{Birth} , \mathcal{R}_S and p_0^{Age} is described in Annex 2 of the supplementary information.

The transmission of Ebola virus within the *E. helvum* population of Yaounde, Cameroon, was modelled using

the following system of ordinary differential equations (ODE):

$$\dot{M}_P = b(t)R_A p_{\bar{q}} - M_P(\tilde{\mu}_Y + m_P(t) + \alpha_M) \quad (1)$$

$$\dot{S}_P = b(t)(S_A + I_A + L_A)p_{\bar{q}} + \alpha_M M_P + \alpha p_{R2S} R_P - S_P(\tilde{\mu}_Y + m_P(t) + \beta I_{\Sigma}) \quad (2)$$

$$\dot{I}_P = \beta S_P I_{\Sigma} - I_P(\tilde{\mu}_Y + m_P(t) + \rho) \quad (3)$$

$$\dot{R}_P = \rho I_P + \beta p_{L2R} I_{\Sigma} L_P - R_P(\tilde{\mu}_Y + m_P(t) + \alpha) \quad (4)$$

$$\dot{L}_P = \alpha p_{R2L} R_P - L_P(\tilde{\mu}_Y + m_P(t) + \beta p_{L2R} I_{\Sigma}) \quad (5)$$

$$\dot{M}_J = m_P(t)M_P - M_J(\tilde{\mu}_Y + m_J(t) + \alpha_M) \quad (6)$$

$$\dot{S}_J = m_P(t)S_P + \alpha_M M_J + \alpha p_{R2S} R_J - S_J(\tilde{\mu}_Y + m_J(t) + \beta I_{\Sigma}) \quad (7)$$

$$\dot{I}_J = m_P(t)I_P + \beta S_J I_{\Sigma} - I_J(\tilde{\mu}_Y + m_J(t) + \rho) \quad (8)$$

$$\dot{R}_J = m_P(t)R_P + \rho I_J + \beta p_{L2R} I_{\Sigma} L_J - R_J(\tilde{\mu}_Y + m_J(t) + \alpha) \quad (9)$$

$$\dot{L}_J = m_P(t)L_P + \alpha p_{R2L} R_J - L_J(\tilde{\mu}_Y + m_J(t) + \beta p_{L2R} I_{\Sigma}) \quad (10)$$

$$\dot{M}_I = m_J(t)M_J - M_I(\tilde{\mu}_Y + m_I(t) + \alpha_M) \quad (11)$$

$$\dot{S}_I = m_J(t)S_J + \alpha_M M_I + \alpha p_{R2S} R_I - S_I(\tilde{\mu}_Y + m_I(t) + \beta I_{\Sigma}) \quad (12)$$

$$\dot{I}_I = m_J(t)I_J + \beta S_I I_{\Sigma} - I_I(\tilde{\mu}_Y + m_I(t) + \rho) \quad (13)$$

$$\dot{R}_I = m_J(t)R_J + \rho I_I + \beta p_{L2R} I_{\Sigma} L_I - R_I(\tilde{\mu}_Y + m_I(t) + \alpha) \quad (14)$$

$$\dot{L}_I = m_J(t)L_J + \alpha p_{R2L} R_I - L_I(\tilde{\mu}_Y + m_I(t) + \beta p_{L2R} I_{\Sigma}) \quad (15)$$

$$\dot{S}_A = m_I(t)(S_I + M_I) + \alpha p_{R2S} R_A - S_A(\tilde{\mu}_A + \beta I_{\Sigma}) \quad (16)$$

$$\dot{I}_A = m_I(t)I_I + \beta S_A I_{\Sigma} - I_A(\tilde{\mu}_A + \rho) \quad (17)$$

$$\dot{R}_A = m_I(t)R_I + \rho I_A + \beta p_{L2R} I_{\Sigma} L_A - R_A(\tilde{\mu}_A + \alpha) \quad (18)$$

$$\dot{L}_A = m_I(t)L_I + \alpha p_{R2L} R_A - L_A(\tilde{\mu}_A + \beta p_{L2R} I_{\Sigma}). \quad (19)$$

Table 2 provides a summary of model parameters and notation. Note, $\tilde{\mu}_A$ and $\tilde{\mu}_Y$ are density dependant mortality rates for adult and young bats respectively. Adult mortality was modelled as

$$\tilde{\mu}_A = \mu_A \left(1 + \frac{J + I + A}{K} \right) \quad (20)$$

where μ_A is the mortality rate in the absence of competition, K is a density dependant parameter that contributes to determining the carrying capacity, and J , I and A provide the total population densities for juveniles, immatures and adults respectively. We assumed that, since pups and juveniles depend on their mothers, and that immature adults probably make mistakes that mature adults have learned to avoid, then the mortality rates of non-adults should be equivalent to or higher than that of adults. Therefore, density dependant mortality among young bats was modelled as

$$\tilde{\mu}_Y = \tilde{\mu}_A + \mu_Y, \quad (21)$$

where μ_Y is the rate of additional mortality among young bats.

116

To quantify survival over one year, let S_A and S_Y denote the annual survival probability for adult and young (<1 year) bats respectively. For adult bats, consider the following differential equation

$$\dot{S}_A = -\tilde{\mu}_A S_A \quad (22)$$

where $S_A(t)$ tracks how the survival probability changes over time t . Let $S_A(0) = 1$, we can obtain S_A by integrating equation 22 over a single 52 week year, i.e.

$$S_A = \exp \left(\int_{t=0}^{52} -\tilde{\mu}_A(t) dt \right)$$

where $\tilde{\mu}_A(t)$ is the time-varying density dependant adult mortality. Similar arguments for young bats give

$$\begin{aligned} S_Y &= \exp\left(\int_{t=0}^{52} -\tilde{\mu}_Y(t)dt\right) \\ &= S_A \exp(-\mu_Y \times 52) \end{aligned}$$

Thus, the additive nature of equation 21 permits us to parameterise μ_Y in terms of the ratio of the annual survival probabilities S_Y and S_A , as follows:

$$\mathcal{R}_S = \frac{S_Y}{S_A} = \exp(-\mu_Y \times 52).$$

Bayesian inference

A Bayesian approach was used to quantify uncertainty in model parameters, trajectories and derived metrics. For each simulation of the ODE system performed during model fitting: state variables were initialized at the start of the year 2017; dynamics were simulated for three years; the ODE solver returned the state variables after each of 520 evenly spaced time steps per year; and the simulated trajectories were confronted with observed field data over the period December 2018 to November 2019. Priors are detailed in table 2 and in the supplementary materials. The following subsections describe the various likelihood functions and penalties used for Bayesian inference, and outline how the model was used to address questions relating to (1) the mismatch between serology and PCR data, and (2) to the optimal timing of virology studies.

Likelihood of age class data

The age distribution data (table 1) provides information as to when in the year we can expect to capture juveniles, immatures and lactating females – where the latter was used as a proxy for pups. It was suspected that between-class heterogeneity in capture rates could bias the absolute numbers of captures – therefore, the data were not used for calibrating between-class differences in density. Instead, we used this data to infer how the probability to capture a bat of a given class changes throughout the duration of the sampling period. Thus, for a given class $j \in \{P, J, I\}$, the likelihood that the total number of captures were distributed across the various sampling dates as observed in the data was quantified assuming

$$y_{j1}, y_{j2}, \dots, y_{jn_{\text{dates}}} \sim \text{Multinomial}\left(p_{j1}, p_{j2}, \dots, p_{jn_{\text{dates}}}, \sum_{i=1}^{n_{\text{dates}}} y_{ji}\right) \quad (23)$$

where n_{dates} is the number of observation dates, y_{ji} is the total number of bats of class j captured at the i^{th} observation date and p_{ji} is the associated set of probabilities. The probabilities to sample a given pup (i.e. lactating female), immature or juvenile on the i^{th} sampling date were assumed to be proportional to the population density predicted by the system of ODEs at sampling time t_i , thus,

$$\begin{aligned} p_{Pi} &\propto P(t_i) \\ p_{Ii} &\propto I(t_i) \\ p_{Ji} &\propto J(t_i) \end{aligned}$$

where $\sum_{i=1}^{n_{\text{dates}}} p_{ji} = 1$ for any given class j .

Likelihood of tooth data

Tooth cementum annuli data (Peel, KS Baker, Hayman, Suu-Ire, et al., 2016) were used to inform estimates of adult mortality rates. Let $y_i \in \{1, 2, \dots\}$ represent the age of bat i in years. A likelihood for a given bat's age was obtained assuming

$$y_i \sim \text{Geometric}(1 - S_A)$$

where S_A is the probability for an adult to survive one year. To calculate this annual survival probability, we added one more differential equation to the system, to track how survival probability fluctuates throughout each simulation. Thus, survival was modeled via

$$\dot{S} = -\tilde{\mu}_A S$$

and we set $S(t=0) = 1$. Following each simulation of three years, the annual adult survival probability was obtained as the ratio of the survival probabilities at the end and beginning of the final year

$$S_A = \frac{S(t=3 \times 52)}{S(t=2 \times 52)}.$$

Likelihood of serology data

129

The serology data (table 1) provides information about the number of seropositive individuals ($y_j(t)$) of class $j \in \{J, I, A\}$ found in a sample of $n_j(t)$ individuals at time t . Thus, we assumed the following likelihood

$$y_j(t) \sim \text{Binomial}(p_j(t), n_j(t))$$

where

$$p_j(t) = \frac{M_j(t) + R_j(t)}{M_j(t) + S_j(t) + I_j(t) + R_j(t) + L_j(t)}$$

is the expected seroprevalence for class j at time t .

130

Penalties against demographic growth or decline

131

Due to an absence of longitudinal population census data, there were large uncertainties concerning the total population size at the beginning and end of the simulation period. We made the simplifying assumption that the *E. helvum* population was close to its carrying capacity and was approximately stable. Thus, we added penalty terms to the Bayesian model, to limit population growth or decline over the short simulation period and therefore constrain the potential distribution of starting population densities. These penalties were implemented as follows,

$$0 \sim \text{Laplace}(\text{location} = \log(I_{\text{End}}/I_{\text{Early}}), \text{scale} = \log(1001/1000))$$

$$0 \sim \text{Laplace}(\text{location} = \log(A_{\text{End}}/A_{\text{Early}}), \text{scale} = \log(1001/1000))$$

where I_{Early} and I_{End} are the total densities of immatures early on, and at the end of, a simulation, and A_{Early} and A_{End} are the total densities of adults early on, and at the end of, a simulation – where "Early" and "End" indicate the first model output for January following one year and three years of simulation respectively. The likelihood imposed by these penalties is greatest when there is zero population growth or decline over the last two years of the three year simulation period. The scale parameter controls the strength of the penalty. These penalties were only applied to the sizes of the adult and immature bat populations, because the other age classes were absent at the beginning of each year. Whilst it could arguably be reasonable to make the simplifying assumption that the total population size was roughly stable over the simulation period, a similar stability assumption for the epidemiological dynamics was considered to be too strong, since too little is known about the dynamics of Ebola in natural reservoirs – thus we did not use equivalent penalty terms to constrain the starting values of the various epidemiological compartments of the model.

Markov chain Monte Carlo

143

Bayesian inference was based on Markov chain Monte Carlo sampling. An adaptive Metropolis Hastings block sampler was used to explore the posterior distribution of the model. Starting values for each parameter were based on the final values obtained from a previous short run of the algorithm. The sampler was run for 40 million iterations, with thinning set to 2000, and the first half of the samples were removed as a burn-in period. Thus, we obtained 10000 samples in total.

144

145

146

147

148

Multi-annual cyclicity and skip years

149

An analysis of the long-term behaviour of the model was performed, with the aim of determining if seasonal patterns in prevalence were likely to be consistent (or not) from one year to the next. For each of the 10000 MCMC samples the ODE system was projected for 1100 years, with the first 1000 years removed as a burn-in period. The time vector sent to the ODE solver provided a temporal resolution of 10 steps per week. Each trajectory of infectious adults (I_A) over the final 100 years was used to construct a recurrence plot (Marwan et al., 2007), using a threshold neighbourhood of 1 bat. In other words, each trajectory was used to construct a matrix with entries

$$\mathbf{R}_{i,j} = \mathbb{1}(|I_A(t_i) - I_A(t_j)| < 1) \quad (24)$$

where $\mathbb{1}$ is the indicator function, i and j are indices providing location along the time vector, and $|\cdot|$ represents the absolute value. Clearly, the main diagonal of any recurrence plot contains only ones (because $i = j$ for each entry of the diagonal) and is uninteresting. However, any other diagonal containing only ones is interesting, because it informs about periodic (i.e. repeating) dynamics. Thus, we searched for the closest diagonal (to the principal diagonal) containing just ones, in order to identify k , the periodicity in years of any multi-annual pattern in I_A . Thus 10000 values of k were tabulated in order to quantify uncertainty in the periodicity of the epidemiological dynamics. For this tabulation, we pooled all observations of $k > 50$ years, to avoid potential false positives near the corners of the recurrence plots.

For any simulation where we identified that $k > 1$ we searched for skip years, which we defined as any 52 week period within which the density of infectious adults (I_A) consistently remains below one. Thus, when tabulating the various observed values of k we also tabulated the frequency of observing skip years as a function of k .

Probability of not sampling an infectious bat

162

A key aim of this work was to quantify whether or not we should expect to see PCR positive bats in a typical sample given the fitted model of Ebola transmission in *E. helvum*. Let $N_j(t)$ represent the sample size for bats of age class j obtained during a sampling campaign performed in week t – the probability to have zero infectious bats in this sample is:

$$p(\mathcal{I}_j(t) = 0 | N_j(t)) = \left(1 - \frac{I_j(t)}{M_j(t) + S_j(t) + I_j(t) + R_j(t) + L_j(t)}\right)^{N_j(t)} \quad (25)$$

where $\mathcal{I}_j(t)$ is the number of infectious bats in the sample. We considered that $N_j(t) = 25$ is a fairly typical scenario in a given sampling campaign, and thus plotted the evolution of $p(\mathcal{I}_j(t) = 0 | N_j(t) = 25)$ in time for adult and immature bats, to provide an indication of when in the year would be an optimal time for sampling if viral extraction was the aim.

Similarly, we also calculated the probability of having not captured a single infectious bat given all the bats tested by PCR throughout the entire study,

$$p(\mathcal{I} = 0 | N_J, N_I, N_A) = \prod_{t \in T_{\text{Obs}}} \prod_{j \in \{J, I, A\}} \left(1 - \frac{I_j(t)}{M_j(t) + S_j(t) + I_j(t) + R_j(t) + L_j(t)}\right)^{N_j(t)} \quad (26)$$

where \mathcal{I} is the total number of infectious bats sampled during the study, N_j is the vector indicating how many bats of age class j were sampled in each sampling campaign, and T_{Obs} is the set of times for all of the observation campaigns.

Implementation

170

All calculations were performed in R (R Core Team, 2022) version 4.2.1. Numerical integration of the ODE system was performed using the `lsoda` function in the `deSolve` package (Soetaert et al., 2010). Functions for

the derivatives and Jacobian of the ODE system were coded in C. Bayesian inference was performed in NIMBLE (de Valpine, Paciorek, et al., 2022; de Valpine, Turek, et al., 2017), and the function `nimbleRcall` was used to call `lsoda` from inside NIMBLE. The package `nimbleNoBounds` (Pleydell, 2023) was used for improving the efficiency of adaptive Metropolis-Hastings sampling near the bounds of the parameter space. The R package CODA was used to perform convergence diagnostics on the MCMC output, and to provide the mean, median, 95% credibility interval and effective sample size (ESS) for each parameter. The effective sample size, which estimates the number of independent samples per parameter while accounting for auto-correlation, was calculated using the function `effectiveSize`. Whilst the system of ODEs was defined in continuous time, it is common for ODE solvers to discretise time – for each simulation `lsoda` was provided a time vector with intervals of 0.1 weeks to define when estimates for the state of the system were required. To economise on memory allocation we configured NIMBLE to store and use the state of the dynamic system at weekly time intervals.

Results

Inference from parameters

The posterior mean, median and 95% credibility intervals (shown in parentheses below) of each parameter, along with the annual survival and effective sample sizes (ESS) estimates obtained from 10000 MCMC samples, are presented in table 3. Twelve of the parameters were associated with ESS scores of 10000 or higher. The lowest ESS estimates were associated with the inverse of antibody loss rate ($ESS(\alpha^{-1}) = 2289$), the proportion of recovered individuals obtaining long-term immunity ($ESS(p_{R2L}) = 6024$), and the proportion of adults with long-term immunity at the start of each simulation ($ESS(p_0(L|Ad)) = 7133$).

The birth pulse is expected to start in the eighth week of the year and last nine (95% CI: 6.6 – 10.7) weeks. The three consequent maturation pulses are expected to start in weeks 12, 24 and 45 respectively. The ranges of the 95% credibility intervals for the four pulse function start times were (in chronological order) 0.76, 0.3, 1.5 and 1.9 weeks respectively. Annual survival probabilities were estimated as 39% (33% – 46%) and 76% (74% – 79%) in young and adult bats respectively. The estimated recovery rate, $\rho = 0.67$ (0.37 – 1.5), indicates that the expected duration of infections was 1.5 weeks (5 days – 19 days). Recovered bats are expected to produce antibodies for 75 (48 – 135) weeks, and maternal antibodies are expected to last 1.1 (0.36 – 2.3) weeks. The estimates of p_{R2L} indicate that roughly two thirds of recovered individuals pass to the long-term immunity class, although uncertainty was high (0.24 – 0.92). Only 17% of infectious attacks on individuals with long-term immunity re-initiate anti-body production, although uncertainty is large (0.7% – 47%).

A comparison of age-structure seasonality in the data and the model is presented in Fig. 2. The modelled trajectory of pup presence (red) closely follows the observed seasonal patterns in the number of lactating females (black). The model slightly underestimates the proportion of juveniles in May, but otherwise matches the juvenile data well - i.e. with overlap between the credibility intervals generated from the data and from the model. Seasonality in the presence/absence of immature adults is characterised well, although some considerable fluctuations in densities remain unexplained by the model. Similarly, there was considerable overlap between the credibility intervals calculated from the model and from the tooth-age data, albeit with some notable outliers among young adult bats.

Seroprevalence dynamics

Comparisons of modelled and observed seroprevalence, in juvenile, immature adult and adult bats, are presented in Fig 3. The credibility intervals of observed and modelled seroprevalence overlap at all sampling dates. In juveniles and immature adults there is a large drop in seroprevalence when the maturation pulse functions permit the re-population of those age classes – by contrast, in adults there is a small increase in seroprevalence at the time when immatures start becoming adults. Seroprevalence increases in juveniles and

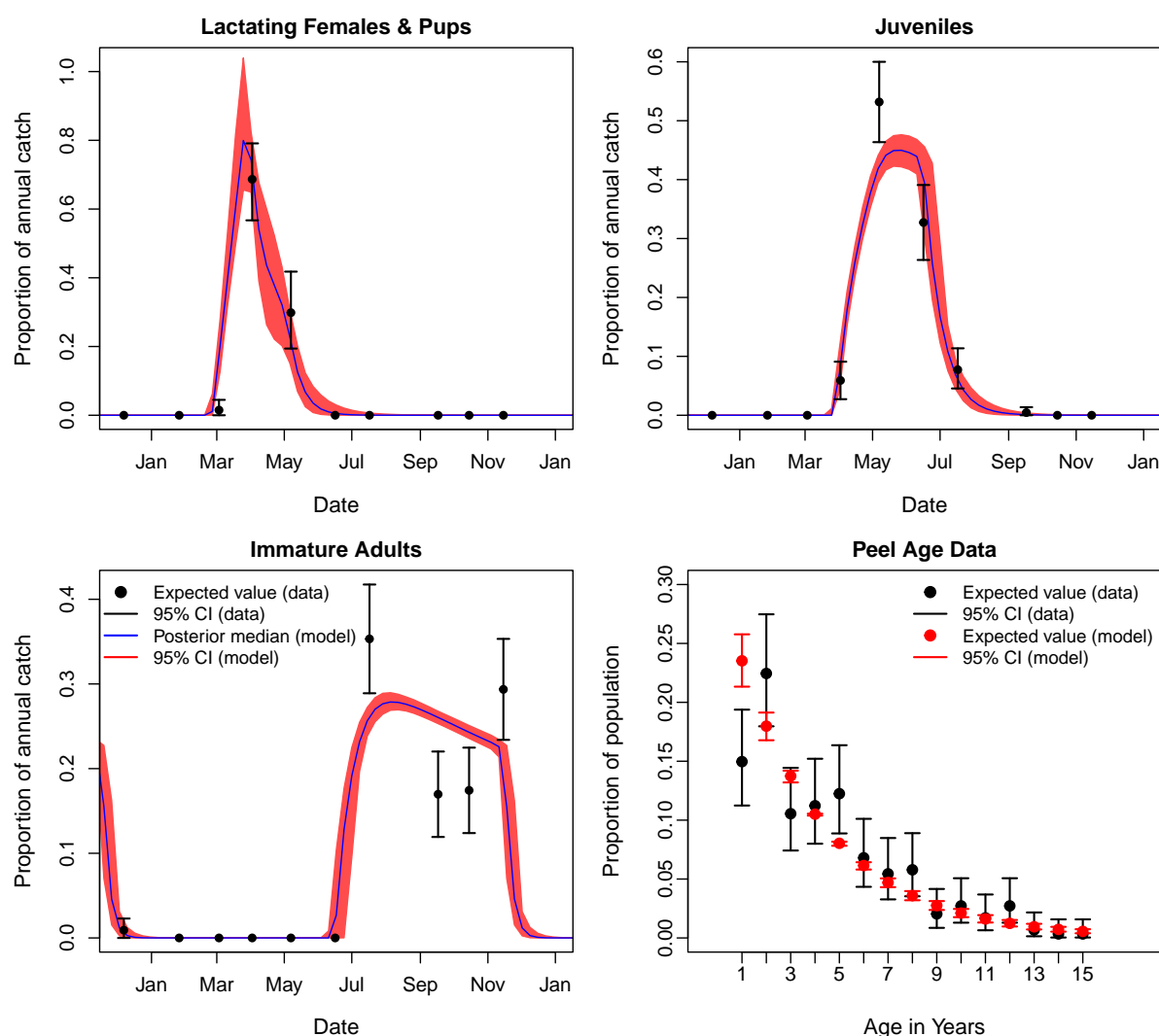


Figure 2. Comparison of model trajectories to age-structure data for *Eidolon helvum* in Yaounde, Cameroon (top row and bottom left), and of modelled adult survival to age estimates of adults based on tooth annuli data from Ghana (Peel, KS Baker, Hayman, Suu-Ire, et al., 2016).

Parameter	Mean	2.5%	Median	97.5%	ESS
b_{Start}	8.04E+00	7.67E+00	8.04E+00	8.43E+00	10000
d_{Birth}	9.12E+00	6.62E+00	9.31E+00	1.07E+01	7372
p_{Birth}	9.54E-01	9.19E-01	9.56E-01	9.80E-01	10000
\hat{m}_P	6.41E-01	3.31E-01	6.10E-01	1.11E+00	10000
\hat{m}_J	4.58E-01	3.22E-01	4.37E-01	7.04E-01	10375
\hat{m}_I	1.44E+00	7.71E-01	1.33E+00	2.75E+00	10000
m_P^{Start}	1.25E+01	1.19E+01	1.25E+01	1.28E+01	10000
m_J^{Start}	2.40E+01	2.30E+01	2.39E+01	2.55E+01	9381
m_I^{Start}	4.58E+01	4.50E+01	4.57E+01	4.69E+01	11342
μ_A^{-1}	1.24E+03	1.09E+03	1.24E+03	1.41E+03	9532
\mathcal{R}_S	5.12E-01	4.16E-01	5.10E-01	6.19E-01	9199
N_0	4.92E+05	4.51E+05	4.92E+05	5.36E+05	9711
$p_0(Im)$	2.09E-01	6.65E-03	1.67E-01	6.22E-01	10341
$p_0(S Im)$	2.43E-01	8.60E-03	1.99E-01	7.02E-01	10000
$p_0(I Im)$	2.60E-01	8.90E-03	2.17E-01	7.15E-01	9662
$p_0(R Im)$	2.45E-01	7.48E-03	2.00E-01	7.01E-01	10000
$p_0(L Im)$	2.52E-01	8.89E-03	2.07E-01	7.05E-01	10000
$p_0(S Ad)$	2.38E-01	6.09E-03	1.81E-01	7.18E-01	10000
$p_0(I Ad)$	2.76E-01	1.24E-02	2.41E-01	7.24E-01	9037
$p_0(R Ad)$	2.35E-01	7.17E-03	1.89E-01	6.91E-01	10000
$p_0(L Ad)$	2.51E-01	8.53E-03	2.07E-01	7.22E-01	7133
β	5.57E-06	3.08E-06	4.96E-06	1.21E-05	7574
ρ	6.77E-01	3.71E-01	6.06E-01	1.49E+00	7540
α^{-1}	7.51E+01	4.81E+01	6.96E+01	1.35E+02	2289
α_M^{-1}	1.11E+00	3.60E-01	1.04E+00	2.28E+00	9575
p_{R2L}	6.33E-01	2.47E-01	6.54E-01	9.20E-01	6024
p_{L2R}	1.70E-01	7.67E-03	1.47E-01	4.71E-01	9426
S_Y	3.91E-01	3.27E-01	3.90E-01	4.60E-01	9198
S_A	7.65E-01	7.42E-01	7.65E-01	7.87E-01	9474

Table 3. Summary of marginal posterior distributions for each parameter in the Ebola-*E.helvm* model. The mean, median and 95% credibility intervals for each parameter are presented, along with the effective sample size (ESS) estimated using the effectiveSize function of R package CODA.

immature adults during midsummer, with median seroprevalence rates being just 0.4% (0.05% - 1.8%) and 217
0.9% (0.007% - 3.8%) in weeks 22 and 24 (of 2019) respectively, and reaching 68% (60% - 74%) in week 40. Whilst 218
this peak in seroprevalence is synchronised for the two classes, the density of juveniles is already reaching 219
zero by that time, whereas the density of immature adults is reaching its maximum. A summertime upward 220
trend is also observed in the seroprevalence of adults, with a median seroprevalence of 35% (29%-41%) in 221
week 25 rising to 51% (43% - 62%) in week 38. The trajectories of both observed and modelled seroprevalence 222
from early April to early May suggest that seroprevalence in juveniles drops considerably during this period – 223
a continuation of the drop initiated one month earlier by the initiation of weaning in week 12. 224

Period and predictability of long-term dynamics 225

The periods of multi-annual cyclicity in the dynamics of infectious adults (I_A), identified using recurrence 226
plots from 10000 simulations, are presented in table 4. Eighty nine percent of simulations resulted in dynamics 227
with a period of one year – in these cases, the timing of the annual peak remained identical from one year to 228

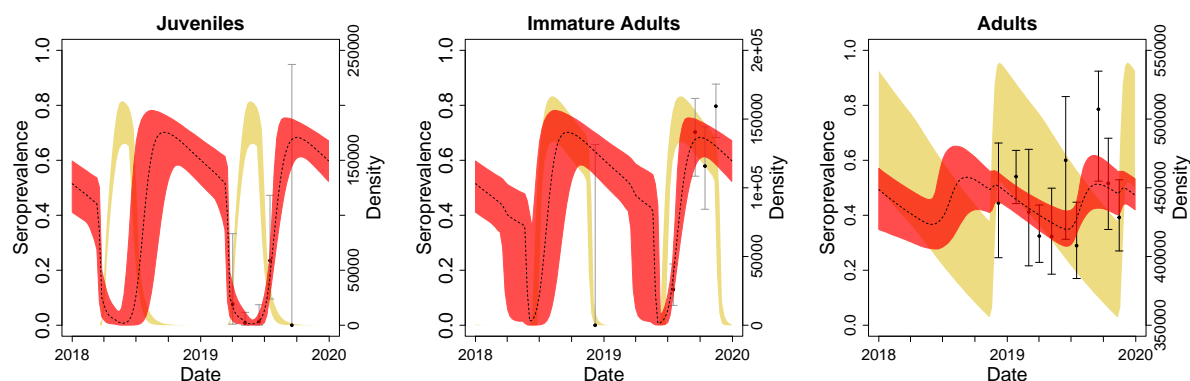


Figure 3. Seroprevalence data and estimates for 2018-2019. The mean and 95% credibility intervals for the seroprevalence data are shown as black dots and whiskers respectively. The median and 95% credibility intervals for the modelled seroprevalence are shown as dotted lines and red bands respectively. 95% credibility intervals for the density of individuals in each class are shown in beige.

the next. Among the 11% of simulations which exhibiting more complex dynamics, 31% exhibited skip years. Nearly nine percent of simulations resulted in biennial ($k = 2$) cycles, 24% of which exhibited skip years. Sixty seven simulations resulted in four-year cycles, with 94% exhibiting skip years. Nineteen simulations exhibited $k > 4$ and $k < 50$. Seventy three simulations exhibited $k > 50$, with 48% exhibiting skip years. Examples of

Period k (years)	Frequency	Frequency with skips
1	8938	0
2	899	219
4	67	63
5	1	0
6	5	4
7	1	0
8	7	7
10	1	1
14	1	0
25	1	0
28	1	0
48	1	1
51-99	25	8
≥ 100	48	27
Extinct	4	N.A.
Total	10000	330

Table 4. Recurrence plot analysis results, providing the frequency distribution for various values of k , the period (in years) of dynamics in the density of infectious adults (I_A), and the frequency of observing skip years in those patterns. Since recurrence plots were constructed from 100 year simulations, the maximum periodicity permitting at least one whole replication of a dynamic cycle was 50 years. Thus, we pool all simulations providing just partial evidence for periodicity in the 50-99 range. Similarly, we pool all simulations indicating $k \geq 100$, many of which are likely to have been chaotic. Four simulations resulted in extinction of the virus.

the types of trajectories possible under each value of k are presented in Fig. 4.

The timing of the annual peak in infectious adults, and the relation ship between that timing and the size of the peak, is presented in Fig. 5. An annual peak in the density of infectious adults is most likely in weeks 30 - 31 ($p=0.63$), in weeks 17 - 27 ($p=0.05$), or in weeks 48 - 52 ($p=0.045$). Weeks 21, 25 and 27 are associated

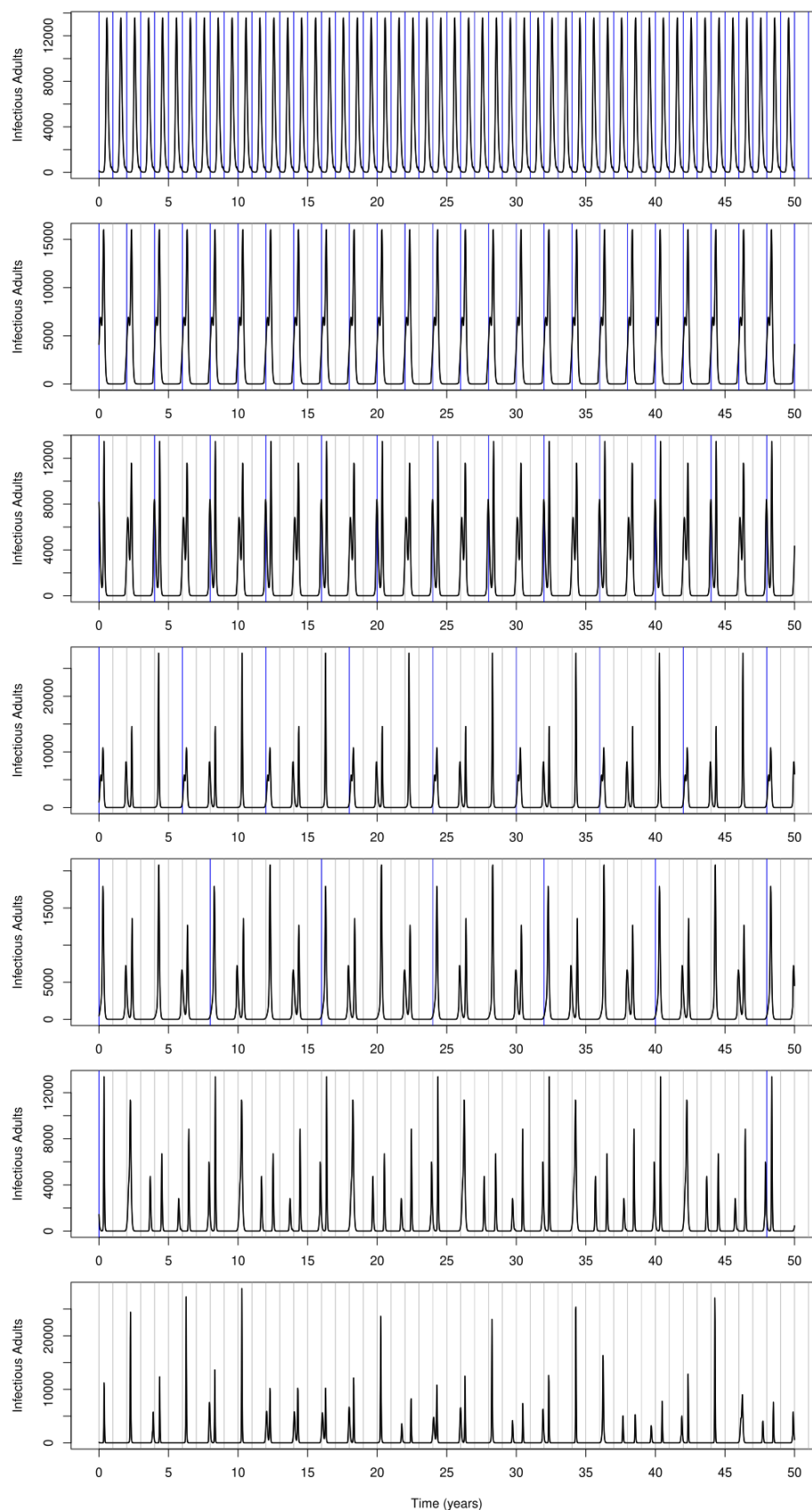


Figure 4. Example long-term trajectories of infectious adults under various values of period k . From top to bottom, k equals 1, 2, 4, 6, 8, 48 and $k > 100$ respectively. Vertical grey, and blue, lines depict the start of each year, and the period k , respectively. Skip years (any 52 week period without an outbreak) are evident in several examples. A higher (than one bat) threshold in the recurrence plot definition (Eq. 24) could clearly result in $k = 8$ and not $k = 48$ in the sixth example. The dynamics in the final example appear to be chaotic.

with the greatest expected outbreak sizes (24610, 24411 and 24528 infectious adults respectively), despite bi-modality in outbreak size during that period of the year. The expected outbreak size in weeks 30 and 50 are 8128 and 9618 respectively.

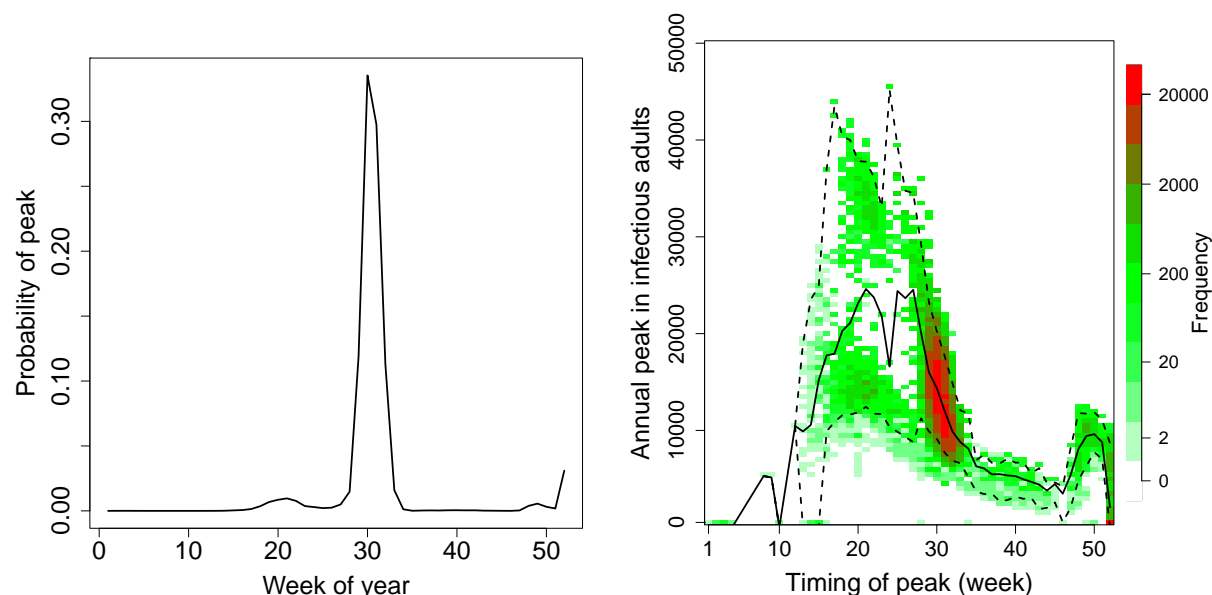


Figure 5. Seasonal trend in the probability that the annual peak in infectious adults falls within a given week (left), and the relationship between the timing and size of outbreak peaks (right). These results are based on the final 100 years of 10000 simulations, each 1100 years in length. The probability of the peak given the week of the year was derived as the expected value derived from these one million years of simulated output (black line, left plot). The frequency distribution for the timing and size of peak I_A density for each of these one million years of simulated output is represented via a white-green-red colour scale (right plot), with the weekly mean and 95% credibility intervals represented as solid and dashed lines respectively.

Probability of not sampling an infectious bat

Seasonality across 2019 in the probabilities to not have an infectious individual in a sample of 25 adults and 25 young bats are represented graphically in figure 6. The expected values of these probabilities were minimised in week 31 in both young and adult bats, and were 0.02 (95% CI: 0.0039 – 0.069) and 0.48 (0.29 – 0.70) respectively.

The probability to not have an infectious bat in the samples tested by PCR in the (Djoms et al., 2022) study was 0.00052 (6.6×10^{-9} – 4.2×10^{-3}). These probabilities are greatest during the first four to five months of the year. Uncertainty in these probabilities is greatest in late summer and early autumn.

Discussion

Model overview and fit

The current work presents a Bayesian analysis of an age-structured epidemiological model of Ebolavirus transmission in *Eidolon helvum*. The model simulates both demographic and epidemiological dynamics, and was calibrated to ecological and serological data collected previously in Cameroon (Djoms et al., 2022) and age structure data from Ghana (Peel, KS Baker, Hayman, Suu-Ire, et al., 2016). A key component of the model is a series of four seasonally dependant pulse functions, which control when females can produce pups, and when maturation between successive age classes can occur. Uncertainty in the estimated starting times of those pulse functions was low, with the 95% credibility interval being less than two weeks wide in all four cases.

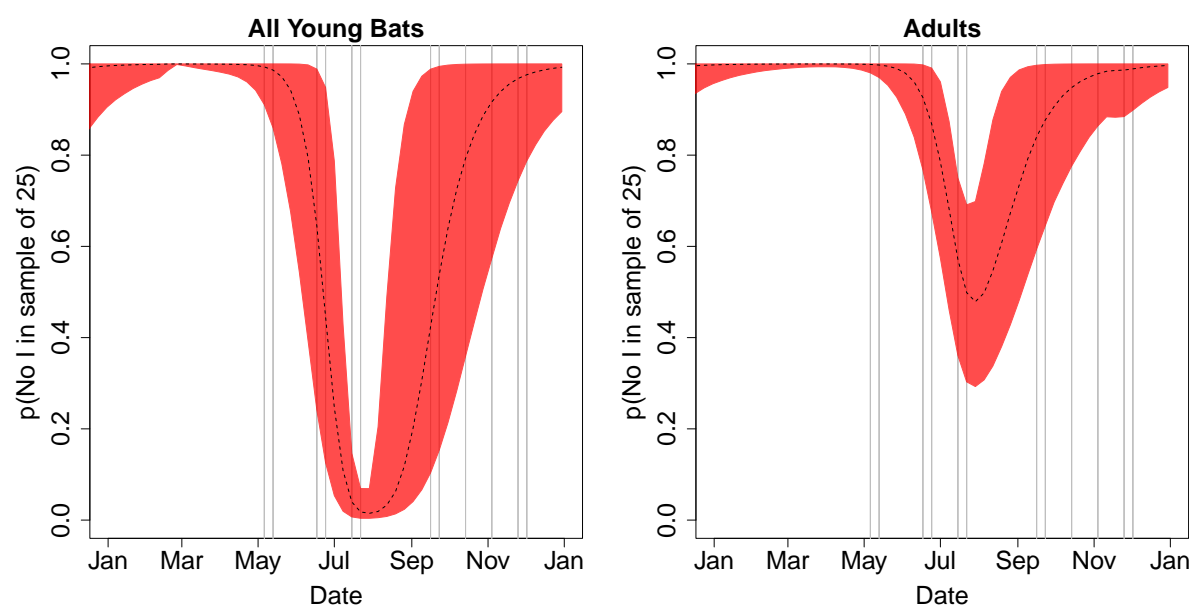


Figure 6. Probability of not capturing an infectious bat in a sample of 25 pre-adult (left) or adult (right) bats, across 2019. Grey vertical lines indicate weeks at which bats were captured for PCR analysis, with a mean sample size of 25.

Some outliers in the age-structure data were observed (Fig. 2) and are likely linked to neglected ecological mechanisms, such as heterogeneity in dispersion patterns, food availability and survival. Nevertheless, the model trajectories provide a succinct summary of trends observed in both the age-structure and serology data – the most notable trend being the sharp increase in seroprevalence in late summer (Fig. 3).

Inference from parameter estimates

Our analyses indicate that, on average, 76% of adults and 39% of young bats survive each year. Infections are expected to last one and a half weeks. Maternal antibodies are expected to provide protection for just 1.1 weeks on average, thus the annual birthing pulse leads rapidly to growth in the pool of susceptible individuals, which in turn typically leads to increased transmission and seasonal outbreaks. Somewhat similar patterns of maternal antibody loss, followed by acquisition as young adults, and with seroprevalence in adults stabilising at roughly 60%, have also been reported for Lagos bat virus and henipavirus in *E. helvum* (Peel, KS Baker, Hayman, Broder, et al., 2018) – however, the mean duration of protection from maternal antibodies in that study was estimated to be half a year. Following experimental infections with canine distemper virus in adult female *Pteropus hypomelanus* and natural infections of Hendra virus in adult female *Pteropus alecto* serological tests could still detect maternal antibodies in pups of up to 7.5 and 8.5 months of age (Epstein, ML Baker, et al., 2013). The duration of protection from maternal antibodies estimated in the current study does appear to be low compared to estimates from other studies for other viruses, however, uncertainty was low (despite a very uninformative prior) which suggests that the result was really driven by the observed data. Further studies could be useful to verify why maternal antibodies play an apparently less important role here, compared to other host-virus systems.

Here, the expected duration of antibodies in recovered bats was estimated to be 75 weeks, or possibly as much as 135 weeks – although again, this duration of projection from antibodies is shorter than the four years and twelve years estimated for henipavirus and Lagos bat virus respectively in Peel, KS Baker, Hayman, Broder, et al. (2018). Given the shorter half-life of detectable antibodies in the adult bats of the current study, it is perhaps less surprising that maternal immunity appears to be shorter here than in other studies. The posterior distribution of p_{R2L} indicated that the majority of individuals losing antibodies are expected to enter a form of long-term immunity – and 97.5% of samples indicated $p_{R2L} > 0.24$, thus some form of

long-term immunity appears to be likely. This result replicates modelling results of Brook et al. (2019), who described a similar phenomenon in henipavirus transmission in *Eidolon dupreanum*, *Pteropus rufus* and *Rousettus madagascariensis* fruit bats in Madagascar. Moreover, experimental infections suggest that Egyptian Fruit Bats (*Rousettus aegyptiacus*) continue to exhibit long-term protection to Marburg virus 17-24 months after an original infection despite waning expression of virus-specific IgG antibodies (Schuh, Amman, TK Sealy, et al., 2017).

Probability of serology-PCR mismatch

A key aim of the current work was to explore an apparent mismatch between seroprevalence data – which suggest Ebola-related virus circulation in juvenile and sexually immature bats – and the results of PCR tests – which have failed to detect a positive sample among the 456 oral and rectal swabs tested from 366 bats (152 juveniles and 214 immature adults)(Djoms et al., 2022). Here the probability to not have an infectious bat among all the samples tested by PCR was estimated to be 0.00052 (95% CI: 6.6×10^{-9} - 4.2×10^{-3}), which confirms a paradoxical mismatch between the results of the serology and PCR tests.

The circulation pattern observed in the serology data, and replicated in our model, is apparently driven by seasonal pulses of young susceptible bats entering the population, fueling an annual resurgence of viral circulation, and playing a key role in viral persistence. That birthing patterns play an important role for contributing to the timing of outbreaks has been reported for various other host-pathogen systems (Cappelle et al., 2021; Jolles et al., 2021; Mariën et al., 2020; Peel, Pulliam, et al., 2014), which supports the argument that the seasonal patterns observed in the serology data really are linked to viral circulation. However, in the absence of confirmed positive control samples for ebolaviruses in bats the calibration of a serological test is challenging, therefore there is a risk that a low cut-off value could have inflated the frequency of false positive results. Indeed, Djoms et al. (2022) tried several methods to identify a cut-off value – however, even the most stringent of those cut-offs suggested the presence of bats that were seropositive to ebolaviruses and seasonality in transmission. Cross-reactivity between different ebolaviruses has been documented in humans (Diallo et al., 2021) and in experimentally infected *Rousettus aegyptiacus*, where limited cross reactivity with other filoviruses was also documented (Schuh, Amman, TS Sealy, et al., 2019). Such results suggest that the serological signal observed in that study did come from the circulation of Ebola-related viruses and not other filoviruses. Nevertheless, false positive reactivity with other pathogens cannot be excluded for the serological assay used in our study, which may explain why all PCR tests remained negative – i.e. the viruses actually circulating and causing positive serology in *E. helvum* might not be in the detection range of the pan-filovirus PCR of Djoms et al. (2022). However, other factors could also explain the lack of positive PCR test results, even if Ebola-related viruses actually are circulating within the bat population.

One alternative possibility is that low sensitivity of the PCR assay may have lead to many false negative test results and may therefore explain the mismatch between the serological and PCR data. PCR assays designed to detect viral families may have lower sensitivity than PCR targeting specific viruses. For example a Bomabali-virus-specific real-time PCR assay detected an additional positive sample than the filovirus ‘family level’ cPCR assay used by Goldstein et al. (2018).

Furthermore, samples taken from infectious sylvatic bats are likely to have very low viral loads compared to experimentally infected bats or sick naturally infected humans for whom the PCR assays have been designed. If PCR sensitivity is an issue, then developing a more sensitive PCR should help, so long as it is not associated with a decrease in specificity. Indeed, if unknown Ebola-related viruses are actually circulating in the population, designing a specific PCR assay would prove challenging. Moreover, future studies that succeeded to identify or isolate those viruses would greatly clarify the epidemiological picture.

Finally, another potential explanation for the negative PCR results, despite the apparent circulation of Ebola-related viruses, may be the absence of viral excretion in the rectal and oral swab samples collected. During an experimental inoculation of *Rousettus aegyptiacus* with Ebola virus, none of 36 swab samples taken 3-10 days post infection tested positive by PCR, although Ebola RNA was detected in the blood of one bat and the

lungs and liver of another (Paweska et al., 2016). Transmission routes other than the fecal-oral or oral-oral routes may be involved in the transmission of Ebola-related viruses in *E. helvum*. In rare cases Ebola virus has been detected in various samples from humans, and a sexual route of transmission has been demonstrated (Christie et al., 2015; Mate et al., 2015; Thorson et al., 2016). The large majority of samples taken from bats so far have been oral and rectal swabs. Taking multiple samples from bats, including organs may help to clarify this point. Ethical questions would arise from such a protocol involving bat euthanasia, and the balance between improving our understanding of the ecology of ebolaviruses and animal well-being should be discussed by ethics experts.

Complex dynamics and optimal timing for sampling

A key aim of the current study was to predict the optimal timing for identifying or isolating the virus(es) responsible for the sero-conversions observed in *E. helvum*. Clearly, when planning field sampling schemes, it can be highly beneficial to have as complete an understanding as possible concerning the complexity of viral dynamics in a sylvatic host population. Some bat-borne zoonotic viruses are known to exhibit complex multi-year inter-epizootic periods, which have been attributed to interactions between population density changes, waning immunity, and viral recrudescence (Epstein, Anthony, et al., 2020). Results from our long-term simulations indicate a degree of uncertainty regarding whether or not complex multi-annual dynamics in the number of infectious bats are to be expected. Ten percent of our simulations suggest that the period of cyclicity could be greater or equal to two years, and 31% of that subset of simulations suggest that there may be periods of twelve months or more where prevalence rates remain close to zero. Such "skip years" are a well known phenomenon in mathematical epidemiology (Stone et al., 2007; Subramanian et al., 2020; Zhao et al., 2018) and arise when the size of the susceptible population remains below a threshold required for an outbreak for prolonged periods of time. Clearly, whether or not skip years occur is an important question for field-virologists interested in sampling sylvatic hosts for virus isolation. Here the probability that the system exhibits skip years was estimated as 0.033, which is low but not completely negligible either.

Actually, almost 90% of our long-term simulations suggested that the dynamics of ebolavirus in *E. helvum* in Cameroon may be relatively simple. The most likely scenario appears to be: one outbreak occurs per year; the size of those outbreaks is somewhat consistent; and the peak of each outbreak likely occurs during weeks 30 and 31 of the year ($p=0.63$). Thus, a sampling campaign centered at these dates would most likely be optimal. However, our uncertainty analysis does not eliminate the possibility of more complex patterns where the peak in the number of infectious bats could occur at any time after the first three months of the year, and where the size and timing of outbreaks are related. Given this uncertainty in the timing and size of outbreaks, it could also be worth sampling in weeks 17-27, because although the probability to have an outbreak in this period is lower, the size of outbreaks predicted in this period can be greater. Any outbreaks occurring after week 35 would only generate low prevalence rates, thus it could be challenging to isolate the virus during this period. These results can be used to target periods when ebolavirus circulation can be expected to be greatest, and to help optimise the sample sizes required to have a high probability of sampling at least one infectious bat – which can help limit the number of bats euthanized for the purpose of viral isolation.

Limitations and future research

Various limitations should be kept in mind when interpreting the results presented in the current work. For example, our modelling neglects: stochasticity in population dynamics, transmission and recrudescence (Muñoz et al., 2022; Peel, Pulliam, et al., 2014); spatial dynamics and migration (Richter and Cumming, 2006); between-year variation in the timing and success of birth pulses (Adole et al., 2016); potential long-term carriers (Forrester, 2018); temporal changes in environmental stress that may affect susceptibility (Lafferty and Holt, 2003); and age-dependant heterogeneity in contact rates (Rohani et al., 2010). Future modelling studies should consider using sensitivity analysis to assess whether or not neglecting such mechanisms can have

important consequences on the long-term trajectories of disease transmission and on the optimal timing of sampling. Moreover, the current work has focused on one host, one serological test and is based on just over one year of field data. We cannot eliminate the possibility that multiple Ebola-related viruses contributed to the observed trends in serology, because of a lack of specificity of the serological tests. The limitations of this study highlight the importance of conducting long-term field monitoring, for the calibration of models, assessing their predictions and for fully elucidating the complex dynamics of Ebola-related viruses in sylvatic host communities.

Conclusions

The current paper presents modelling work that addresses a paradoxical observation in straw coloured fruit bats, where young bats exhibit rapid seroconversion for ebolavirus antibodies whilst confirmation by PCR remains elusive. The probability of this contradictory observation is estimated to be one in two thousand. The potential causes of this mismatch have been discussed and remain the focus of future research. This work provides novel insights in to the nature of the seasonality of ebolavirus transmission in fruit bats and provides predictions which can help with the design of future field programs for isolating circulating Ebola viruses.

Acknowledgements

We thank the staff of CREMER (Joseph Moudindo, Aime Mebanga, Thomas Atemkeng, Eitel Mpoudi Ngole) for logistical support in the field in Cameroon.

Funding

This study was supported by the projects Ebo-Sursy (FOOD/2016/379–660) and BCOMING (Horizon Europe project 101059483) both funded by the European Union.

Conflict of interest disclosure

The authors of this article declare that they have no financial conflict of interest with the content of this article.

Data, script and code availability

Scripts and data used in the current analysis are available online at <https://doi.org/10.5281/zenodo.8276172>.

Supplementary information availability

Details regarding the pulse functions used to control seasonality are provided in Annex 1. Details regarding the parameterisation of priors for three parameters are provided in Annex 2.

Annex 1: Pulse functions

Seasonal flow of individual bats through the four-class life cycle model was controlled via a series of four pulse functions. The scaled product of two logistic curves was used to define a single pulse, and modulo

arithmetic was used so that this pulse could be applied to an unlimited number of years. Thus, the rate of a given life-cycle process (i.e. birth, or maturation) was modelled as a function of time t as follows:

$$r(t) = r_{\text{Max}} \frac{1}{1 + \exp(\gamma X_1(t))} \frac{1}{1 + \exp(\gamma X_2(t))} \quad (27)$$

with

$$X_1(t) = ((t_{\text{Start}} - t + \delta) \bmod 52) - \delta, \quad (28)$$

$$X_2(t) = ((t - t_{\text{Stop}} + \delta) \bmod 52) - \delta \quad (29)$$

and

$$\delta = \frac{52 + t_{\text{Stop}} - t_{\text{Start}} - 10^{-2}}{2}, \quad (30)$$

where t_{Start} gives the start of the pulse (i.e. the centrality parameter for the first logistic curve), t_{Stop} gives the end of the pulse (i.e. the centrality parameter for the second logistic curve), modulo arithmetic permits the recycling of the pulse function over multiple years, δ provides a shift that eliminates artefacts arising from edge effects under most biologically reasonable combinations of parameters, and γ is a shape parameter controlling how rapidly the rate $r(t)$ passes from zero to r_{Max} , and back again. In practice we fix γ at ten. Note, $t_{\text{Stop}} > t_{\text{Start}}$.

For the birth pulse function, r_{Max} represents the within-season birth rate, which we note as b_{Max} , which we define as

$$b_{\text{Max}} = \frac{p_{\text{Birth}}}{d_{\text{Birth}}} \quad (31)$$

where d_{Birth} is the duration of the birth pulse, and p_{Birth} is the proportion of females expected to give birth (to a single pup) during the birth pulse.

Annex 2: parameterisation for three priors

In the following subsections we outline how we parameterised priors for the parameters p_{Birth} , \mathcal{R}_S and p_0^{Age} .

Prior for p_{Birth}

The proportion of females giving birth each year, p_{Birth} , was modelled using a beta-binomial model and data from Hayman, McCrea, et al. (2012). According to that paper, the expected value and 95% confidence interval of p_{Birth} are 0.96 and (0.92, 0.98) respectively. We sought to identify the parameters of a beta distribution that would minimise the L^2 norm of errors between fitted values and these three data points. Using the `optim` function in R, we identified that

$$p_{\text{Birth}} \sim \text{Beta}(171.49, 8.13).$$

For further details, see our script `hayman.R`.

Prior for \mathcal{R}_S

According to Hayman, McCrea, et al. (2012) the expected annual survival probability and 95% confidence intervals is 0.63 and (0.27, 0.88) for adult bats. Using arguments similar to the previous section on p_{Birth} , we used `optim` to minimise the L^2 norm of the errors between these three data points and fitted values, giving the following model of adult survival

$$S_A \sim \text{Beta}(4.95, 3.35). \quad (32)$$

Similarly, Hayman, McCrea, et al. (2012) reported the expected annual survival probability and 95% confidence intervals for young bats are 0.43 and (0.16, 0.77) respectively. To ensure that $S_Y < S_A$, we assumed $S_Y = \mathcal{R}_S S_A$ and that \mathcal{R}_S could be modelled using a beta distribution. Thus, we sought to identify parameters

for \mathcal{R}_S that could minimise an L^2 norm between the three data points and their equivalent "fitted values".
We used Monte Carlo approximation to obtain these "fitted values" as follows.

Assume the following model for \mathcal{R}_S ,

$$\mathcal{R}_S \sim \text{Beta}(\alpha_{\mathcal{R}}, \beta_{\mathcal{R}}). \quad (33)$$

For a given set of parameters $(\alpha_{\mathcal{R}}, \beta_{\mathcal{R}})$, we simulate 10001 values from equations 32 and 33. Those vectors are multiplied to obtain 10001 samples of S_Y , and kernel density estimation is applied to these samples to obtain an empirical distribution for S_Y . This empirical distribution is used to identify the fitted expected value and 95% credibility interval, which are then used to calculate the L^2 norm. For further details, see our script `hayman.R`.

Prior for p_0^{Age}

Before simulating dynamics with an epidemiological model, it is necessary to set the initial conditions of the system, i.e. the state of each compartment at time zero. For an age structured model, this includes setting the initial population sizes for each age class. We do that by parameterising in terms of the total population size at time zero, N_0 , and the proportion of that population associated with each age class, $p_0^{\text{Age}} = (p_0^p, p_0^j, p_0^i, p_0^a)$. Since pups and juveniles are absent at the start of the year we set their initial proportions to zero. The prior on N_0 was set to reflect the approximate population size in Yaounde. Thus, we simply need to set a prior for the proportion of immatures, p_0^i , and its complement, $p_0^a = 1 - p_0^i$. We outline how we did that here.

Since p_0^i is a probability, it was natural to assign a beta distribution and to seek data on which to base the hyperparameters. Assuming that the annual adult survival is constant with age, the population age structure follows a geometric series, and the proportion of individuals of a given age relative to all individuals of the same age or greater is constant. Thus, we used tooth cementum annuli data (Peel, KS Baker, Hayman, Suu-Ire, et al., 2016) to estimate that proportion, and thereby obtain an estimate for the proportion of immature adults in the population at the start of the year, just prior to the spring birth pulse. For each age t , in years, we modelled the proportion of bats of age t among all bats of age t or more as a beta-binomial model with uniform prior, i.e.

$$p(\text{Age} = t | \text{Age} \geq t, t \in [1, 14]) \sim \text{Beta}(1 + n_t, 1 + n_{>t})$$

where n_t is the number of sampled bats of age t , $n_{>t}$ is the number of sampled bats older than t and t is any integer in the interval $[1, 14]$ – since the oldest bat in the data set was 15 years old. A weighted average of these 14 priors was calculated to obtain a general prior

$$p(\text{Age} = t | \text{Age} \geq \tau) \sim \text{Beta}\left(1 + \sum_{t=1}^{14} n_t \omega_t, 1 + \sum_{t=1}^{14} n_{>t} \omega_t\right)$$

where the weights $\omega_t \propto \sum_{t=1}^{14} n_{\geq t}$ account for the diminishing sample size as bats die each year. Since $p(\text{Age} = t | \text{Age} \geq \tau)$ is constant under the constant mortality assumption, it might therefore be reasonable to use it as a prior for p_0^i . This procedure resulted in the prior

$$p_0^i \sim \text{Beta}(38.74, 146.57).$$

However, in practice, this prior lead to mismatches with data that suggested that very few bats were still being classified as immature at the start of the year (fig. 2). Thus, we maintained the expected value of this prior, but relaxed the variance so to not exclude zero as the proportion of immatures at the start of January. This relaxation resulted in the following prior

$$p_0^i \sim \text{Beta}(1, 3.8).$$

The density functions of these priors, and the 14 distributions used to build them, are shown graphically in figure 7.

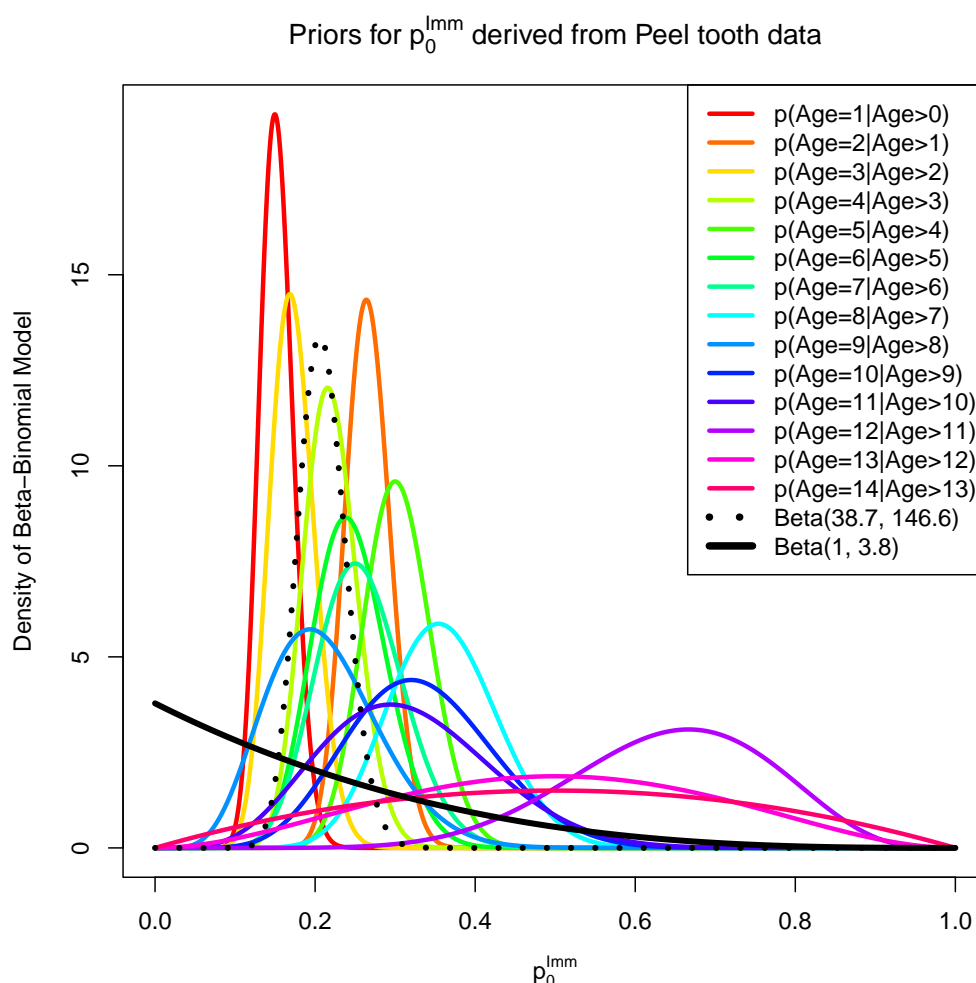


Figure 7. Posterior distributions for beta-binomial models of the proportion of a given age of adult in years (t) in the sub-population of bats the same age or more. Tooth cementum annuli data (Peel, KS Baker, Hayman, Suu-Ire, et al., 2016) were used to calculate these distributions, fixing t at integer values in the interval $[1, 14]$. The weighted average of those 14 distributions (dotted line) proved to be overly restrictive as a prior. So the variance of the prior was relaxed to not exclude zero (black line), providing a prior for the proportion of immature adults in the *E.helvum* population at the start of the year.

References

- Adole T, J Dash, and PM Atkinson (2016). A systematic review of vegetation phenology in Africa. *Ecological Informatics* 34, 117–128.
- Brook CE, HC Ranaivoson, CC Broder, AA Cunningham, JM Héraud, AJ Peel, L Gibson, JL Wood, CJ Metcalf, and AP Dobson (2019). Disentangling serology to elucidate henipa-and filovirus transmission in Madagascar fruit bats. *Journal of Animal Ecology* 88, 1001–1016.
- Cappelle J, N Furey, T Hoem, TP Ou, T Lim, V Hul, O Heng, V Chevalier, P Dussart, and V Duong (2021). Longitudinal monitoring in Cambodia suggests higher circulation of alpha and betacoronaviruses in juvenile and immature bats of three species. *Scientific Reports* 11, 24145.
- Caron A, M Bourgarel, J Cappelle, F Liégeois, HM De Nys, and F Roger (2018). Ebola virus maintenance: if not (only) bats, what else? *Viruses* 10, 549.
- Champagne M, J Cappelle, A Caron, T Pouliquen, A Samoura, MI Doumbouya, G Thaurignac, AK Ayoubah Ahidjans Keita, M Peeters, M Bourgarel, and H De Nys (Submitted). Effects of biological and environmental factors on filovirus serology in bats in Guinea.

Christie A, GJ Davies-Wayne, T Cordier-Lasalle, DJ Blackley, AS Laney, DE Williams, SA Shinde, M Badio, T Lo, SE Mate, et al. (2015). Possible sexual transmission of Ebola virus—Liberia, 2015. *Morbidity and Mortality Weekly Report* 64, 479.

De Nys HM, PM Kingebeni, AK Keita, C Butel, G Thaurignac, CJ Villabona-Arenas, T Lemarcis, M Geraerts, N Vidal, A Esteban, et al. (2018). Survey of Ebola viruses in frugivorous and insectivorous bats in Guinea, Cameroon, and the Democratic Republic of the Congo, 2015–2017. *Emerging infectious diseases* 24, 2228.

de Valpine P, C Paciorek, D Turek, N Michaud, C Anderson-Bergman, F Obermeyer, C Wehrhahn Cortes, A Rodríguez, D Temple Lang, S Paganin, and J Hug (2022). NIMBLE: MCMC, Particle Filtering, and Programmable Hierarchical Modeling. Version 0.13.1. <https://doi.org/10.5281/zenodo.1211190>.

de Valpine P, D Turek, C Paciorek, C Anderson-Bergman, D Temple Lang, and R Bodik (2017). Programming with models: writing statistical algorithms for general model structures with NIMBLE. *Journal of Computational and Graphical Statistics* 26, 403–417. <https://doi.org/10.1080/10618600.2016.1172487>.

Diallo MSK, A Ayoub, G Thaurignac, MS Sow, C Kpamou, TA Barry, P Msellati, JF Etard, M Peeters, R Ecochard, et al. (2021). Temporal evolution of the humoral antibody response after Ebola virus disease in Guinea: a 60-month observational prospective cohort study. *The Lancet Microbe* 2, e676–e684.

Djoms DM, FA Mba Djonzo, I Ndong Bass, M Champagne, A Lacroix, G Thaurignac, A Esteban, HM De Nys, M Bourgarel, JF Akoachere, et al. (2022). Dynamics of antibodies to Ebolaviruses in an Eidolon helvum bat colony in Cameroon. *Viruses* 14, 560.

Epstein JH, SJ Anthony, A Islam, AM Kilpatrick, S Ali Khan, MD Balkey, N Ross, I Smith, C Zambrana-Torrel, Y Tao, et al. (2020). Nipah virus dynamics in bats and implications for spillover to humans. *Proceedings of the National Academy of Sciences* 117, 29190–29201.

Epstein JH, ML Baker, C Zambrana-Torrel, D Middleton, JA Barr, E DuBovi, V Boyd, B Pope, S Todd, G Crameri, et al. (2013). Duration of maternal antibodies against canine distemper virus and Hendra virus in pteropid bats. *PLoS one* 8, e67584.

Feldmann H, A Sprecher, and TW Geisbert (2020). Ebola. *New England Journal of Medicine* 382, 1832–1842.

Forrester JV (2018). Ebola virus and persistent chronic infection: when does replication cease? *Annals of Translational Medicine* 6.

George DB, CT Webb, ML Farnsworth, TJ O’Shea, RA Bowen, DL Smith, TR Stanley, LE Ellison, and CE Rupprecht (2011). Host and viral ecology determine bat rabies seasonality and maintenance. *Proceedings of the National Academy of Sciences* 108, 10208–10213.

Glennon EE, DJ Becker, AJ Peel, R Garnier, RD Suu-Ire, L Gibson, DT Hayman, JL Wood, AA Cunningham, RK Plowright, et al. (2019). What is stirring in the reservoir? Modelling mechanisms of henipavirus circulation in fruit bat hosts. *Philosophical Transactions of the Royal Society B* 374, 20190021.

Goldstein T, SJ Anthony, A Gbakima, BH Bird, J Bangura, A Treméau-Bravard, MN Belagahanalli, HL Wells, JK Dhanota, E Liang, et al. (2018). The discovery of Bombali virus adds further support for bats as hosts of ebolaviruses. *Nature microbiology* 3, 1084–1089.

Hayman DT (2015). Biannual birth pulses allow filoviruses to persist in bat populations. *Proceedings of the Royal Society B: Biological Sciences* 282, 20142591.

Hayman DT, AD Luis, O Restif, KS Baker, AR Fooks, C Leach, DL Horton, R Suu-Ire, AA Cunningham, JL Wood, et al. (2018). Maternal antibody and the maintenance of a lyssavirus in populations of seasonally breeding African bats. *PLoS one* 13, e0198563.

Hayman DT, R McCrea, O Restif, R Suu-Ire, AR Fooks, JL Wood, AA Cunningham, and JM Rowcliffe (2012). Demography of straw-colored fruit bats in Ghana. *Journal of mammalogy* 93, 1393–1404.

Hayman DT, M Yu, G Crameri, LF Wang, R Suu-Ire, JL Wood, and AA Cunningham (2012). Ebola virus antibodies in fruit bats, Ghana, West Africa. *Emerging infectious diseases* 18, 1207.

Hranac CR, JC Marshall, A Monadjem, and DT Hayman (2019). Predicting Ebola virus disease risk and the role of African bat birthing. *Epidemics* 29, 100366.

Jacob ST, I Crozier, WA Fischer, A Hewlett, CS Kraft, MAdL Vega, MJ Soka, V Wahl, A Griffiths, L Bollinger, et al. (2020). Ebola virus disease. *Nature reviews Disease primers* 6, 1–31.

Jolles A, E Gorsich, S Gubbins, B Beechler, P Buss, N Juleff, LM de Klerk-Lorist, F Maree, E Perez-Martin, OL Van Schalkwyk, et al. (2021). Endemic persistence of a highly contagious pathogen: Foot-and-mouth disease in its wildlife host. *Science* 374, 104–109.

Lafferty KD and RD Holt (2003). How should environmental stress affect the population dynamics of disease? *Ecology Letters* 6, 654–664.

Leroy EM, B Kumulungui, X Pourrut, P Rouquet, A Hassanin, P Yaba, A Délicat, JT Paweska, JP Gonzalez, and R Swanepoel (2005). Fruit bats as reservoirs of Ebola virus. *Nature* 438, 575–576.

Letko M, SN Seifert, KJ Olival, RK Plowright, and VJ Munster (2020). Bat-borne virus diversity, spillover and emergence. *Nature Reviews Microbiology* 18, 461–471.

Mariën J, B Borremans, C Verhaeren, L Kirkpatrick, S Gryseels, J Goüy de Bellocq, S Günther, CA Sabuni, AW Mas-sawe, J Reijniers, et al. (2020). Density dependence and persistence of Morogoro arenavirus transmission in a fluctuating population of its reservoir host. *Journal of Animal Ecology* 89, 506–518.

Marwan N, MC Romano, M Thiel, and J Kurths (2007). Recurrence plots for the analysis of complex systems. *Physics reports* 438, 237–329.

Mate SE, JR Kugelman, TG Nyenswah, JT Ladner, MR Wiley, T Cordier-Lassalle, A Christie, GP Schroth, SM Gross, GJ Davies-Wayne, et al. (2015). Molecular evidence of sexual transmission of Ebola virus. *New England Journal of Medicine* 373, 2448–2454.

Muñoz F, DRJ Pleydell, and F Jori (2022). A combination of probabilistic and mechanistic approaches for predicting the spread of African swine fever on Merry Island. *Epidemics* 40, 100596.

Munster VJ, DG Bausch, E De Wit, R Fischer, G Kobinger, C Muñoz-Fontela, SH Olson, SN Seifert, A Sprecher, F Ntoumi, et al. (2018). Outbreaks in a rapidly changing Central Africa—lessons from Ebola. *New England Journal of Medicine* 379, 1198–1201.

Olival KJ and DT Hayman (2014). Filoviruses in bats: current knowledge and future directions. *Viruses* 6, 1759–1788.

Paweska JT, N Storm, AA Grobbelaar, W Markotter, A Kemp, and P Jansen van Vuren (2016). Experimental inoculation of Egyptian fruit bats (*Rousettus aegyptiacus*) with Ebola virus. *Viruses* 8, 29.

Peel AJ, KS Baker, DT Hayman, CC Broder, AA Cunningham, AR Fooks, R Garnier, JL Wood, and O Restif (2018). Support for viral persistence in bats from age-specific serology and models of maternal immunity. *Scientific reports* 8, 1–11.

Peel AJ, KS Baker, DT Hayman, R Suu-Ire, AC Breed, GC Gembu, T Lembo, A Fernández-Loras, DR Sargan, AR Fooks, et al. (2016). Bat trait, genetic and pathogen data from large-scale investigations of African fruit bats, *Eidolon helvum*. *Scientific data* 3, 1–11.

Peel AJ, J Pulliam, A Luis, R Plowright, T O'Shea, D Hayman, J Wood, C Webb, and O Restif (2014). The effect of seasonal birth pulses on pathogen persistence in wild mammal populations. *Proceedings of the Royal Society B: Biological Sciences* 281, 20132962.

Pleydell DRJ (2023). nimbleNoBounds: Transformed Distributions for Improved MCMC Efficiency. Version 1.0.2. <https://doi.org/10.5281/zenodo.6399163>.

R Core Team (2022). *R: A Language and Environment for Statistical Computing*. R Foundation for Statistical Computing. Vienna, Austria.

Richter H and G Cumming (2006). Food availability and annual migration of the straw-colored fruit bat (*Eidolon helvum*). *Journal of Zoology* 268, 35–44.

Rohani P, X Zhong, and AA King (2010). Contact network structure explains the changing epidemiology of pertussis. *Science* 330, 982–985.

Schuh AJ, BR Amman, TK Sealy, JR Spengler, ST Nichol, and JS Towner (2017). Egyptian rousette bats maintain long-term protective immunity against Marburg virus infection despite diminished antibody levels. *Scientific reports* 7, 8763.

Schuh AJ, BR Amman, TS Sealy, TD Flietstra, JC Guito, ST Nichol, and JS Towner (2019). Comparative analysis of serologic cross-reactivity using convalescent sera from filovirus-experimentally infected fruit bats. *Scientific Reports* 9, 1–12. 549

Soetaert K, T Petzoldt, and RW Setzer (2010). Solving Differential Equations in R: Package deSolve. *Journal of Statistical Software* 33, 1–25. <https://doi.org/10.18637/jss.v033.i09>. 550 551

Stone L, R Olinsky, and A Huppert (2007). Seasonal dynamics of recurrent epidemics. *Nature* 446, 533–536. 552

Subramanian R, V Romeo-Aznar, E Ionides, CT Codeço, and M Pascual (2020). Predicting re-emergence times of dengue epidemics at low reproductive numbers: DENV1 in Rio de Janeiro, 1986–1990. *Journal of the Royal Society Interface* 17, 20200273. 553 554

Taylor DJ, K Dittmar, MJ Ballinger, and JA Bruenn (2011). Evolutionary maintenance of filovirus-like genes in bat genomes. *BMC Evolutionary Biology* 11, 1–12. 555 556

Thorson A, P Formenty, C Lofthouse, and N Broutet (2016). Systematic review of the literature on viral persistence and sexual transmission from recovered Ebola survivors: evidence and recommendations. *BMJ open* 6, e008859. 557 558

Towner JS, BR Amman, TK Sealy, SAR Carroll, JA Comer, A Kemp, R Swanepoel, CD Paddock, S Balinandi, ML Khristova, PBH Formenty, CG Albarino, DM Miller, ZD Reed, JT Kayiwa, JN Mills, DL Cannon, PW Greer, E Byaruhanga, EC Farnon, P Atimnedi, S Okware, E Katongole-Mbidde, R Downing, JW Tappero, SR Zaki, TG Ksiazek, ST Nichol, and PE Rollin (July 2009). Isolation of Genetically Diverse Marburg Viruses from Egyptian Fruit Bats. en. *PLOS Pathogens* 5. Publisher: Public Library of Science, e1000536. ISSN: 1553-7374. <https://doi.org/10.1371/journal.ppat.1000536>. 559 560 561 562 563 564 565 566 567 568

Zhao S, Y Lou, AP Chiu, and D He (2018). Modelling the skip-and-resurgence of Japanese encephalitis epidemics in Hong Kong. *Journal of theoretical biology* 454, 1–10. 569 570