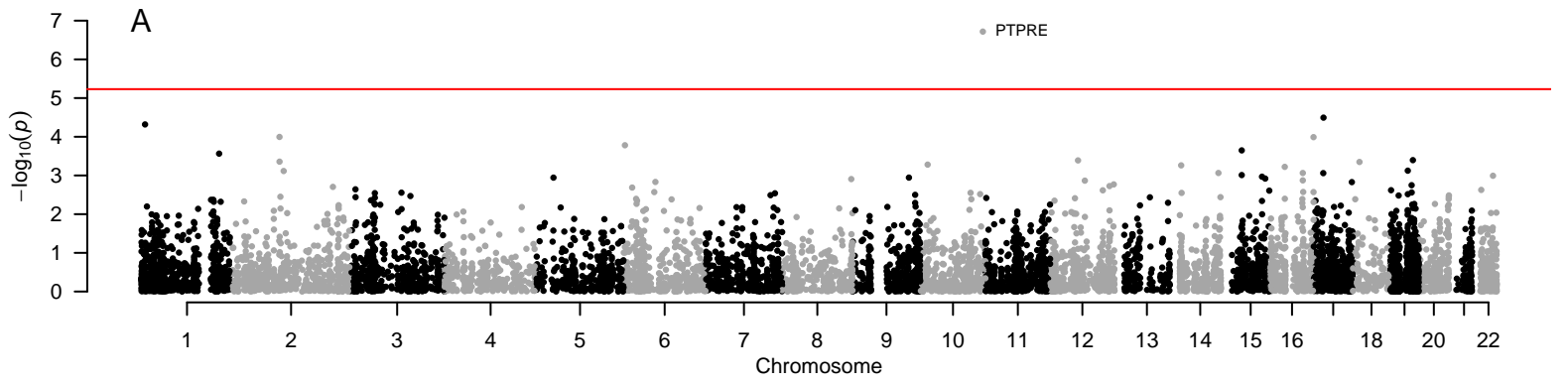
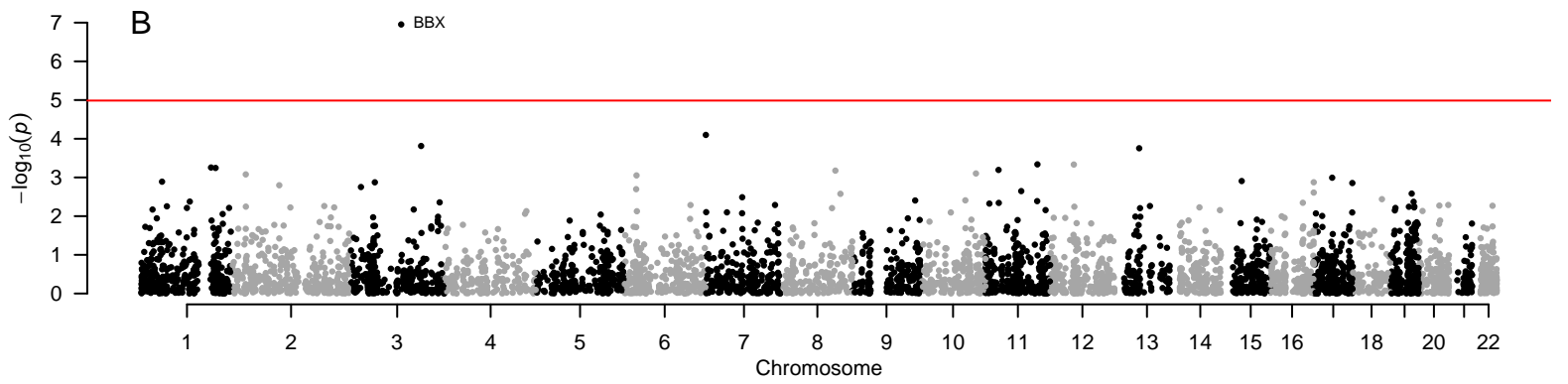


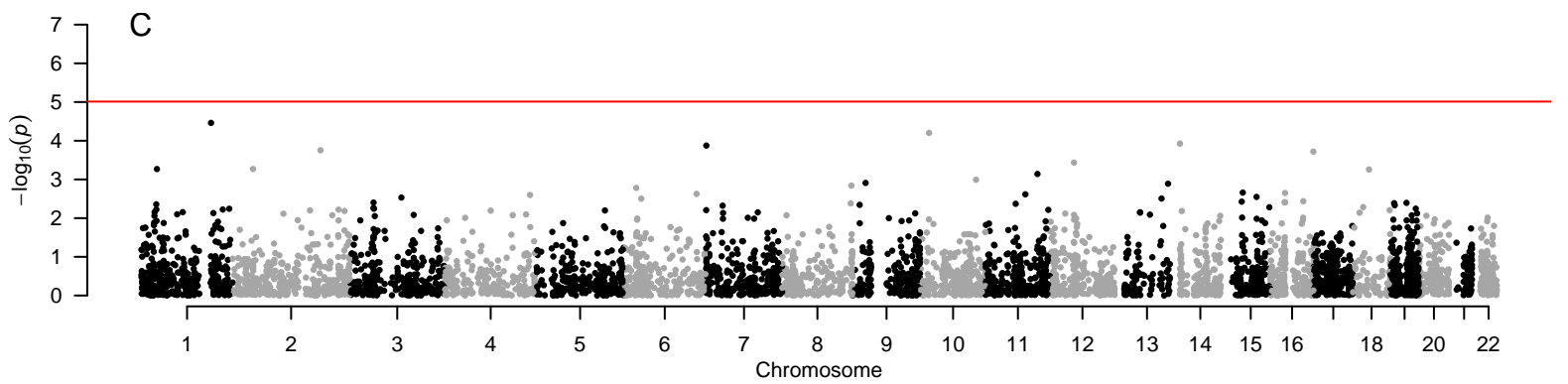
Whole Blood



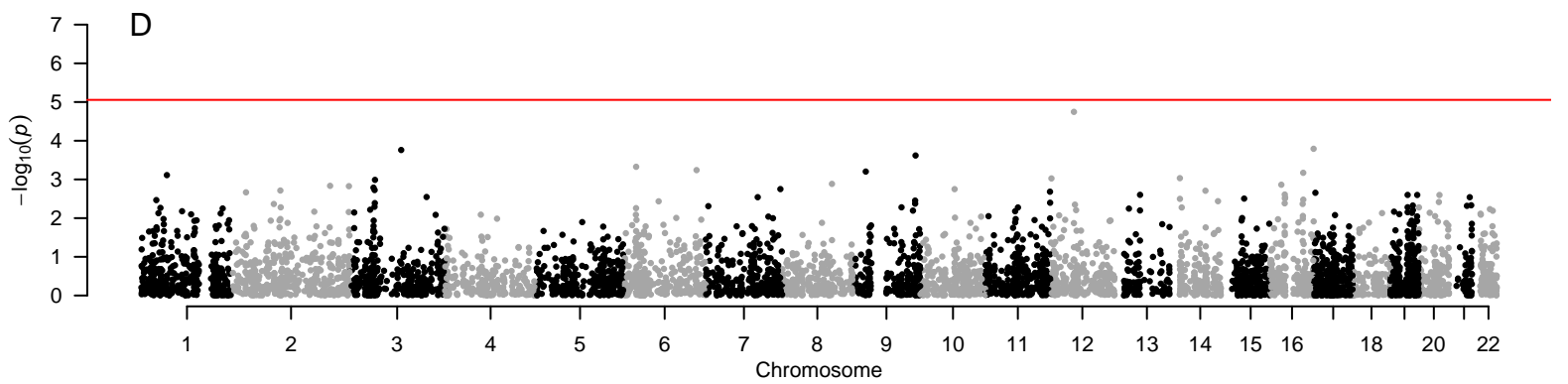
Brain: Anterior Cingulate Cortex (BA24)



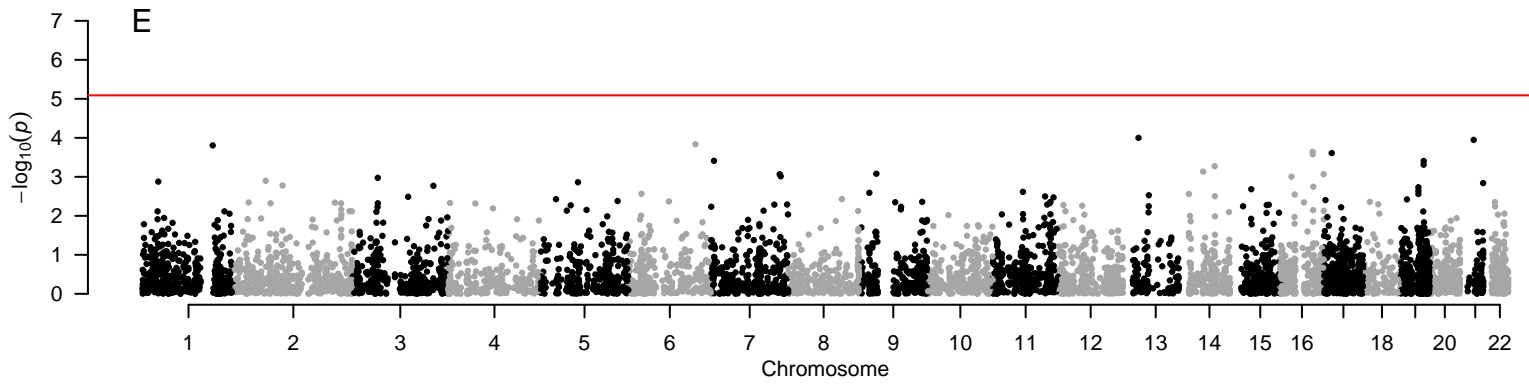
Brain: Caudate Basal Ganglia



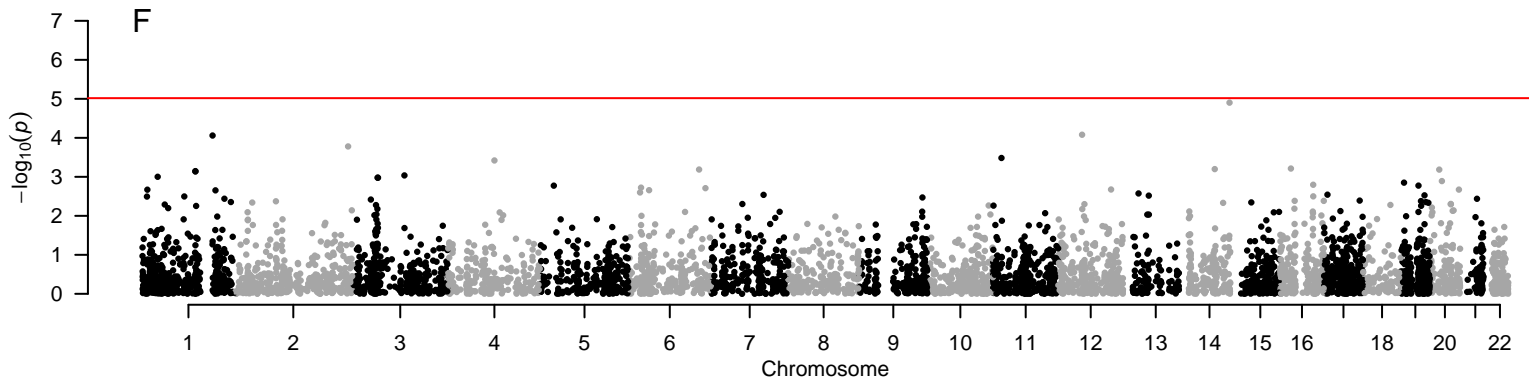
Brain: Cerebellar Hemisphere



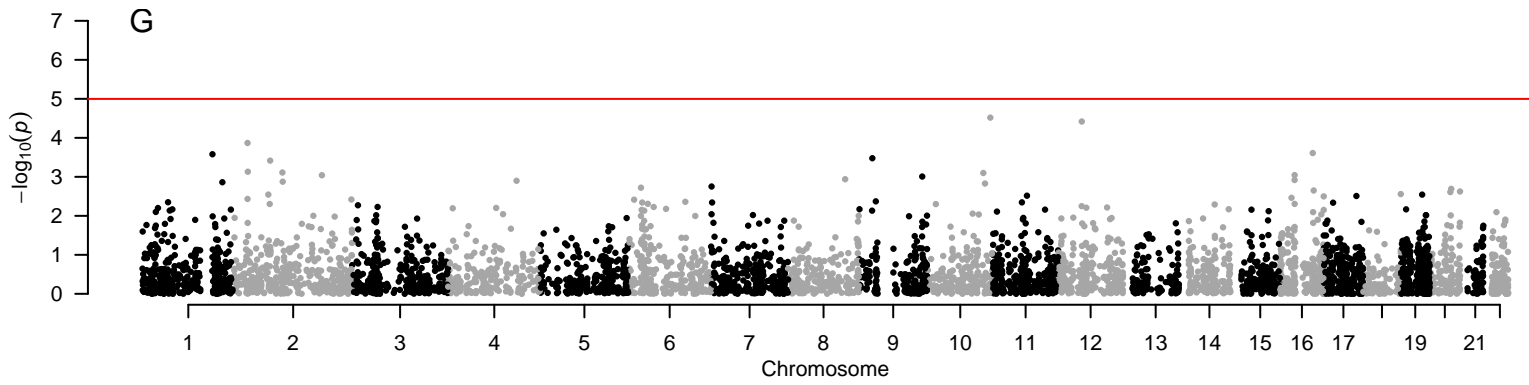
Brain: Cerebellum



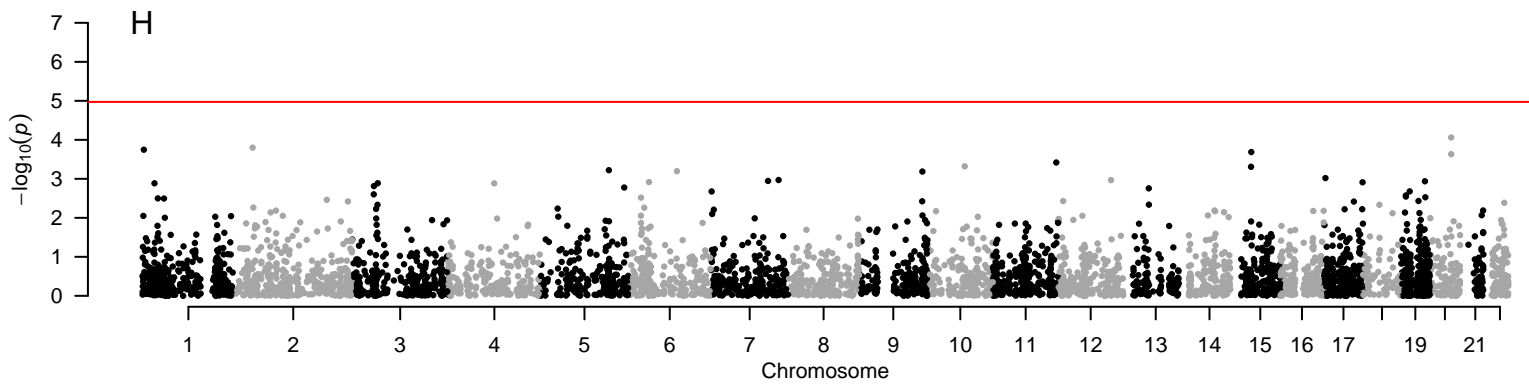
Brain: Cortex



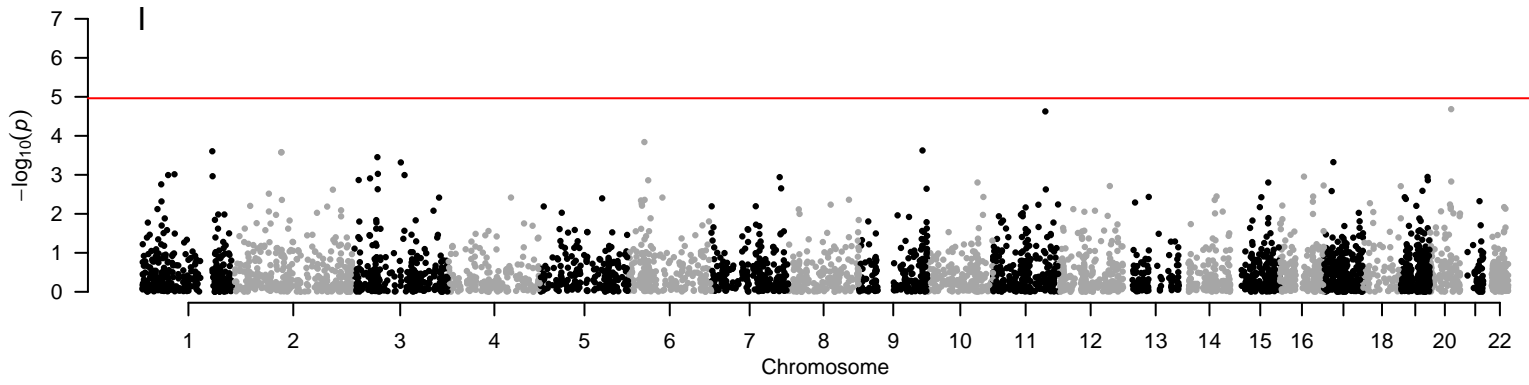
Brain: Frontal Cortex (BA9)



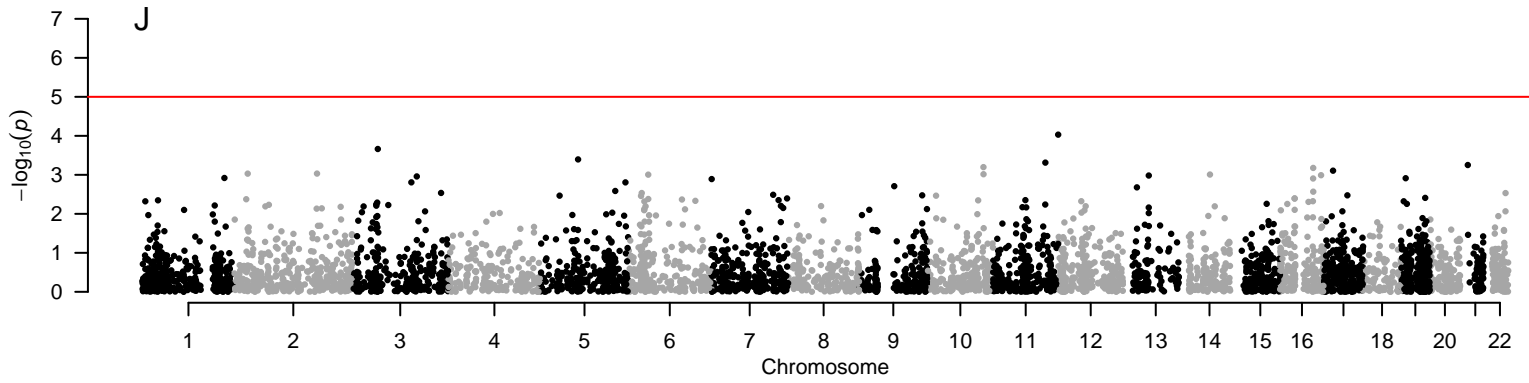
Brain: Hippocampus



Brain: Hypothalamus



Brain: Nucleus Accumbens Basal Ganglia



Brain: Putamen Basal Ganglia

