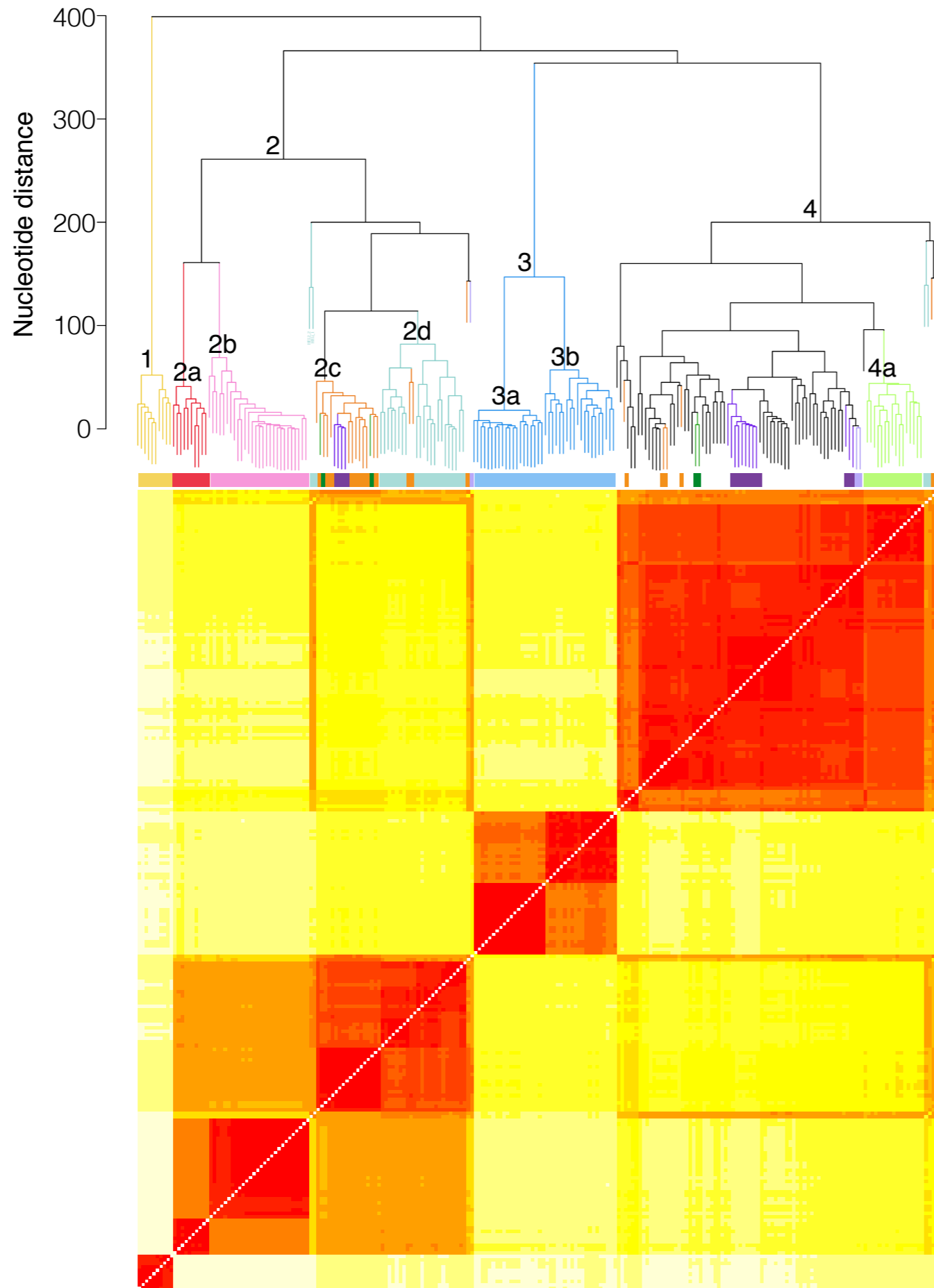


JH739902:1.4-1.5 Mb



- *Geospiza difficilis* from Wolf (2c, 4)
- *G. difficilis* from Darwin (2,4)
- *G. difficilis* from Pinta, Santiago & Fernandina (2b)
- *G. scandens* (2c, 4)
- *Platyspiza crassirostris* (2a)
- *G. conirostris* from Genovesa (2, 2c, 2d, 4)
- *Certhidea olivacea* (1)
- *C. fusca* from Española (3a) & San Cristobal (3b)
- *Pinaroloxias inornata* (Cocos finch) (4a)
- *Camarhynchus sp.* (Tree finches) (2, 2d, 4)
- Remaining *Geospiza sp.* (4)

Genes in region:

*RTF1*

Paf1/RNA polymerase II complex component homolog

*NDUFAF1*

NADH dehydrogenase (ubiquinone) complex I, assembly factor 1