

1 **Supplementary file 4.**

2
3 **Multiple strategies for heat adaptation in rice endosperms**
4 **revealed by on-site cell-specific analysis**

5
6 Hiroshi Wada^{1,†,*}, Yuto Hatakeyama^{1,†}, Yayoi Onda², Hiroshi Nonami², Taiken Nakashima³,
7 Rosa Erra-Balsells⁴, Satoshi Morita¹, Kenzo Hiraoka⁵, Fukuyo Tanaka⁶, and Hiroshi Nakano¹

8
9 ¹Kyushu Okinawa Agricultural Research Center, National Agricultural Research
10 Organization, Chikugo, Japan; ²Graduate School of Agriculture, Ehime University,
11 Matsuyama, Japan; ³Faculty of Agriculture, Hokkaido University, Sapporo, Japan;
12 ⁴Department of Organic Chemistry, University of Buenos Aires, Buenos Aires, Argentina;
13 ⁵Clean Energy Research Center, The University of Yamanashi, Kofu, Japan; ⁶Central
14 Region Agricultural Research Center, National Agriculture and Food Research
15 Organization, Tsukuba, Japan

16
17 [†]These authors contributed equally to this manuscript.

18 *For correspondence: hwada@affrc.go.jp

19
20

21 Supplementary file 4.

22

23

24

25

26

27

28

29

30

31

32

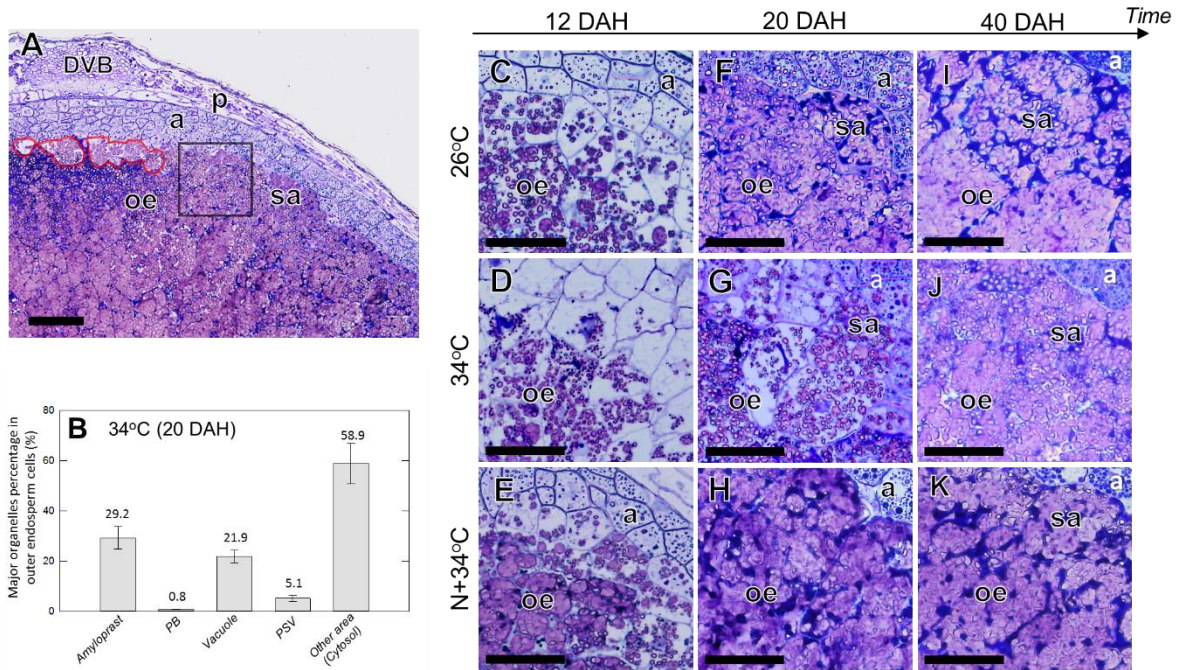
33

34

35

36

37



38

39

40

41

42

43

44

45

46

47

48

49

50

51

52

53

54

The transverse sections of 34°C-treated kernels collected at 20 DAH (A). Volumetric percentage of each organelle per cell in a part of putative chalky zone (traced in red in A) at 20 DAH was shown in B (see Discussion). The data in B indicate the means±SEs of 19 individual cells collected from 3 kernels from 3 individual plants. The black square in A corresponds to the area used for light microscopic observations shown in C-K. The transverse sections collected at 12 DAH (C-E), 20 DAH (F-H), and 40 DAH (I-K) in 26°C (C, F, I), 34°C (D, G, J), and N+34°C (E, H, K) treatments. DVB, dorsal vascular bundle; a, aleurone layer; oe, outer endosperm; sa, subaleurone cell layer; a, aleurone layer; oe, outer endosperm; p, pericarp; sa, subaleurone cell layer. Bars in A and B-G indicate 100 and 50 μm, respectively.