

1 **Supplementary file 5.**

2
3 **Multiple strategies for heat adaptation in rice endosperms**
4 **revealed by on-site cell-specific analysis**

5
6 Hiroshi Wada^{1,†,*}, Yuto Hatakeyama^{1,†}, Yayoi Onda², Hiroshi Nonami², Taiken Nakashima³,
7 Rosa Erra-Balsells⁴, Satoshi Morita¹, Kenzo Hiraoka⁵, Fukuyo Tanaka⁶, and Hiroshi Nakano¹

8
9 ¹Kyushu Okinawa Agricultural Research Center, National Agricultural Research
10 Organization, Chikugo, Japan; ²Graduate School of Agriculture, Ehime University,
11 Matsuyama, Japan; ³Faculty of Agriculture, Hokkaido University, Sapporo, Japan;
12 ⁴Department of Organic Chemistry, University of Buenos Aires, Buenos Aires, Argentina;
13 ⁵Clean Energy Research Center, The University of Yamanashi, Kofu, Japan; ⁶Central
14 Region Agricultural Research Center, National Agriculture and Food Research
15 Organization, Tsukuba, Japan

16
17 [†]These authors contributed equally to this manuscript.

18 *For correspondence: hwada@affrc.go.jp

19
20
21

22 Supplementary file 5.

23

24

25

26

27

28

29

30

31

32

33

34

35

36

37

38

39

40

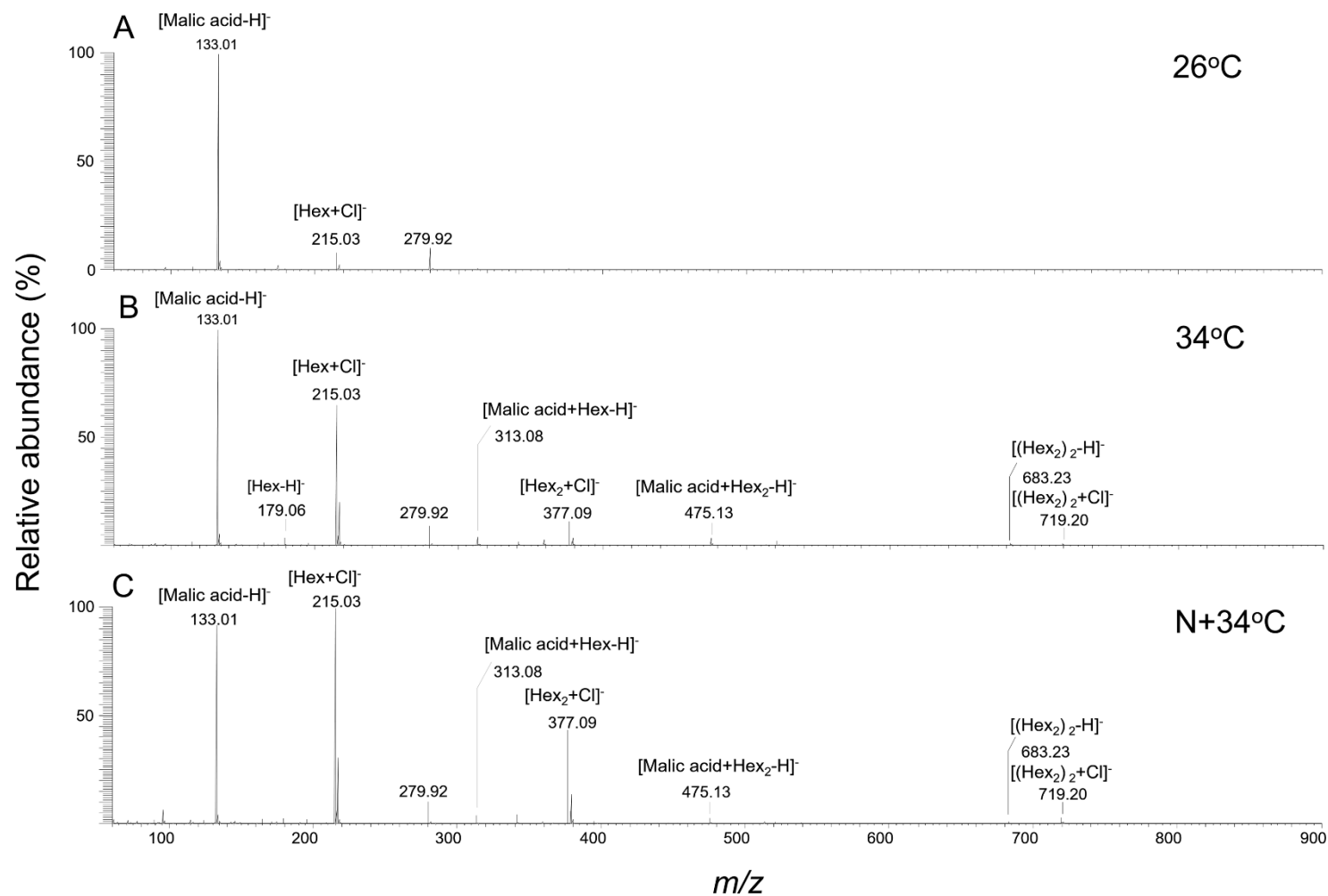
41

42

43

44

45



PicoPPESI-MS negative ion mode mass spectra obtained from the pericarp cells in 26°C (C), 34°C (D), and N+34°C (E) at the same stage. Data are representative of similar experiments with 4-5 kernels in each treatment.