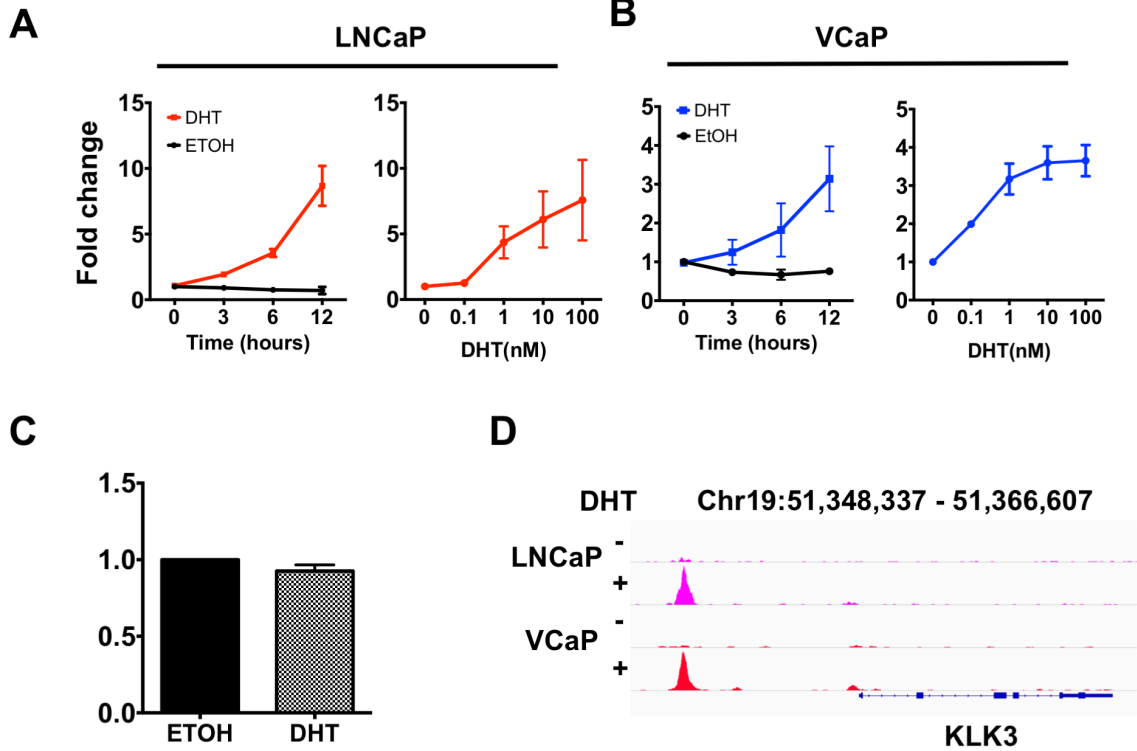


Supplementary Fig1



The relative expression of KLK3/PSA measured by qPCR in (A) LNCaP and (B) VCaP cells treated with 10 nM of DHT for indicated time point or different concentration of DHT for 12 hours. (C) 22Rv cells treated with ETOH or DHT for 12 hours. (D) Screenshot of AR ChIP-seq peaks mapped to the region located < 5Kb from KLK3 TSS in LNCaP and VCaP cells treated with 100 nM of ETOH or DHT for 2 h.