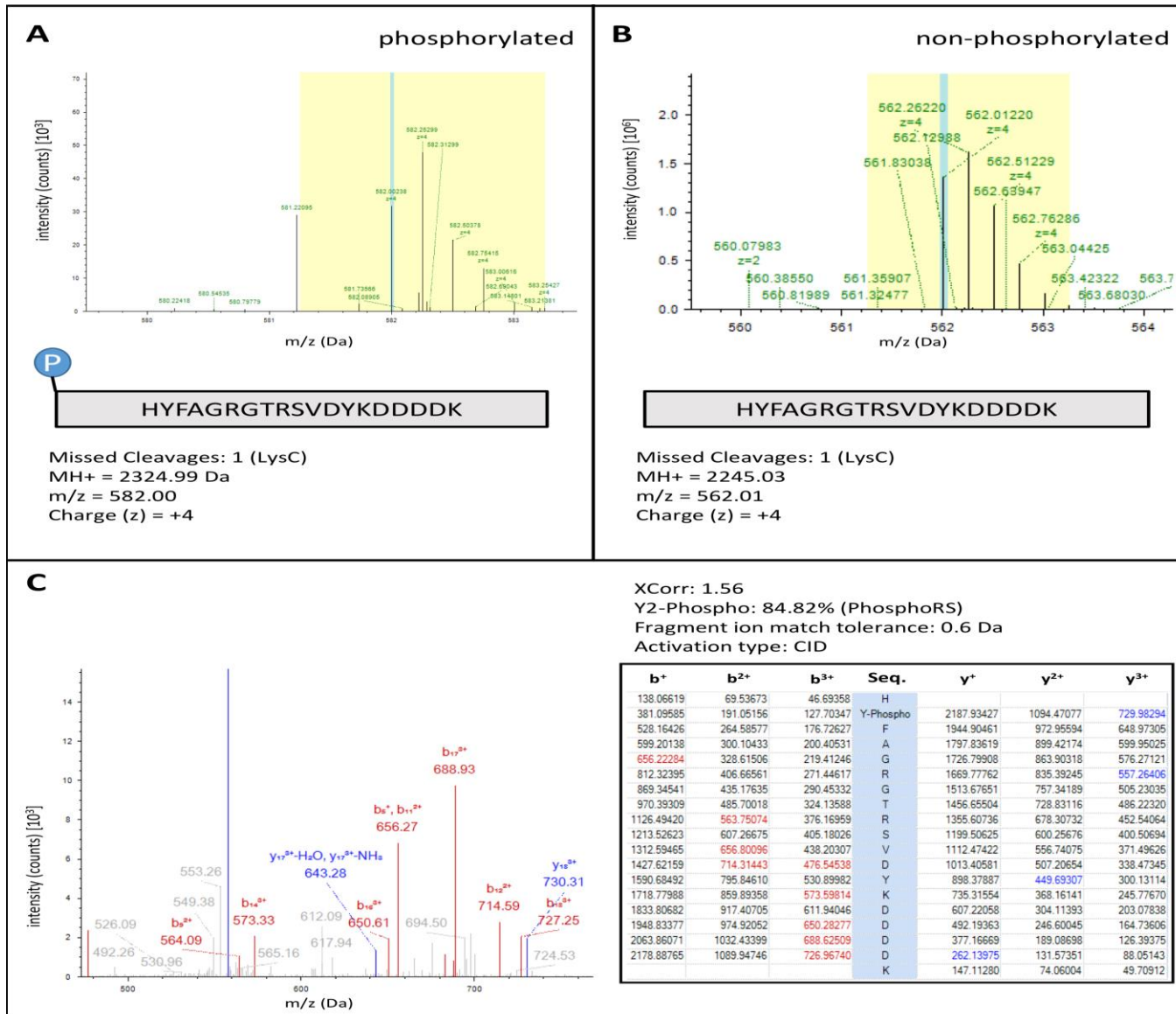


Supplementary data;
Fig S6. Mass spectra for CesT-Y153F-FLAG



Supplementary data; Fig S6. Mass spectra for unphosphorylated CesT peptides

A **CesT-FLAG** (unphosphorylated)

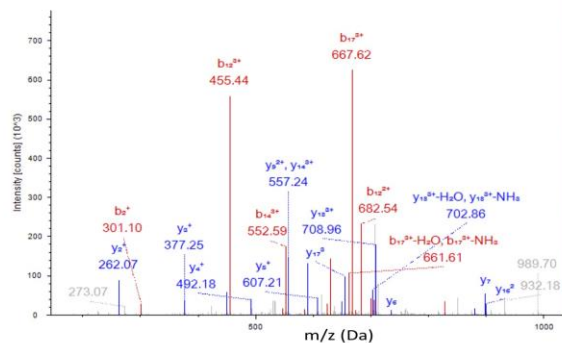
XCorr: 1.93

Fragment ion match tolerance: 0.6 Da

Activation type: HCD

m/z: 566.01

Charge (z): +4



#1	b'	b''	b'''	S...	y'	y''	y'''	#2
1	138.06619	69.53673	46.69358	H				19
2	301.12952	151.06840	101.04802	Y	2123.96285	1062.48506	708.65913	18
3	464.19285	232.60006	155.40247	Y	1960.89952	980.95340	654.30469	17
4	535.22996	268.11862	179.08150	A	1797.83619	899.42174	599.95025	16
5	592.25142	296.62935	198.08866	G	1726.79908	863.90318	576.27121	15
6	748.35253	374.67991	250.12236	R	1669.77762	835.39245	557.26406	14
7	805.37400	403.19064	269.12952	G	1513.67651	757.34189	505.23035	13
8	906.42168	453.71448	302.81208	T	1456.65504	728.83116	486.22320	12
9	1062.52279	531.76503	354.84578	R	1356.60736	678.30732	452.54064	11
10	1149.55482	575.28105	383.85646	S	1199.50625	600.25676	400.50694	10
11	1248.62323	624.81525	416.87926	V	1112.47422	556.74075	371.49626	9
12	1363.65017	682.32872	455.22158	D	1013.40581	507.20654	338.47345	8
13	1526.71350	763.86039	509.57602	Y	898.37887	449.69307	300.13114	7
14	1654.80846	827.90787	552.27434	K	735.31554	368.16141	245.77670	6
15	1769.83541	885.42134	590.61665	D	607.22058	304.11393	203.07838	5
16	1884.86235	942.93481	628.95897	D	492.19363	246.60045	164.73606	4
17	1999.88929	1000.44828	667.30128	D	377.16669	189.08698	126.39375	3
18	2114.91624	1057.96176	705.64360	D	262.13975	131.57351	88.05143	2
19				K	147.11280	74.06004	49.70912	1

B **CesT(Y153F)-FLAG** (unphosphorylated)

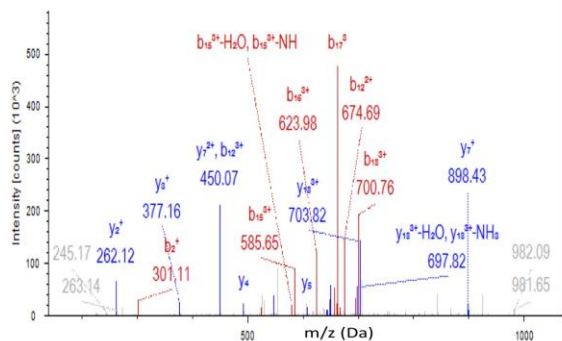
XCorr: 1.90

Fragment ion match tolerance: 0.6 Da

Activation type: CID

m/z: 562.01

Charge (z): +4



#1	b'	b''	b'''	S...	y'	y''	y'''	#2
1	138.06619	69.53673	46.69358	H				19
2	301.12952	151.06840	101.04802	Y	2107.96794	1054.48761	703.32750	18
3	448.19793	224.60260	150.07083	F	1944.90461	972.95594	648.97305	17
4	519.23504	260.12116	173.74967	A	1797.83619	899.42174	599.95025	16
5	576.25651	288.63189	192.75702	G	1726.79908	863.90318	576.27121	15
6	732.35762	366.68245	244.79072	R	1669.77762	835.39245	557.26406	14
7	789.37908	395.19318	263.79788	G	1513.67651	757.34189	505.23035	13
8	890.42676	445.71702	297.48044	T	1456.65504	728.83116	486.22320	12
9	1046.52787	523.76757	349.51414	R	1356.60736	678.30732	452.54064	11
10	1133.55990	567.28359	378.52482	S	1199.50625	600.25676	400.50694	10
11	1232.62831	616.81780	411.54762	V	1112.47422	556.74075	371.49626	9
12	1347.65526	674.33127	449.88994	D	1013.40581	507.20654	338.47345	8
13	1510.71859	755.86293	504.24438	Y	898.37887	449.69307	300.13114	7
14	1638.81355	819.91041	546.94270	K	735.31554	368.16141	245.77670	6
15	1753.84049	877.42388	585.28502	D	607.22058	304.11393	203.07838	5
16	1868.86743	934.93736	623.62733	D	492.19363	246.60045	164.73606	4
17	1983.89438	992.45083	661.96964	D	377.16669	189.08698	126.39375	3
18	2098.92132	1049.96430	700.31196	D	262.13975	131.57351	88.05143	2
19				K	147.11280	74.06004	49.70912	1