

High genetic loading of schizophrenia predicts poor response to lithium in patients with bipolar disorder: A polygenic score and cross-trait genetic analysis

Azmeraw T. Amare, MPH, MSc¹; Klaus Oliver Schubert, MD, PhD^{1,2}; Liping Hou, PhD³; Scott R. Clark, MD, PhD¹; Sergi Papiol, PhD^{4,5}; Urs Heilbronner, PhD^{4,6}; Franziska Degenhardt, MD⁷; Fasil Tekola-Ayele, PhD⁸; Yi-Hsiang Hsu, PhD^{9,10,11}; Tatyana Shekhtman, MSc¹²; Mazda Adli, MD¹³; Nirmala Akula, PhD³; Kazufumi Akiyama, MD¹⁴; Raffaella Ardaù, MD¹⁵; Bárbara Arias, PhD¹⁶; Jean-Michel Aubry, MD¹⁷; Lena Backlund, MD, PhD¹⁸; Abesh Kumar Bhattacharjee, MD¹²; Frank Bellivier, MD, PhD¹⁹; Antonio Benabarre, MD, PhD²⁰; Susanne Bengesser, MD²¹; Joanna M. Biernacka, PhD^{22,23}; Armin Birner, MD²¹; Clara Brichant-Petitjean, MD¹⁹; Pablo Cervantes, MD²⁴; Hsi-Chung Chen, MD, PhD²⁵; Caterina Chillotti, MD¹⁵; Sven Cichon, PhD^{7,26}; Cristiana Cruceanu, BSc²⁷; Piotr M. Czerski, PhD²⁸; Nina Dalkner, MSc²¹; Alexandre Dayer, MD¹⁷; Maria Del Zompo, MD²⁹; J. Raymond DePaulo, MD³⁰; Bruno Étain, MD, PhD¹⁹; Peter Falkai, MD³²; Andreas J. Forstner, MD^{7,26,33}; Louise Frisen, MD¹⁸; Mark A. Frye, MD²³; Janice M. Fullerton, PhD^{34,35}; Sébastien Gard, MD³⁶; Julie S. Garnham, BN³⁷; Fernando S. Goes, MD³⁰; Maria Grigoriou-Serbanescu, PhD³⁸; Paul Grof, MD, PhD³⁹; Ryota Hashimoto, MD, PhD^{40,41}; Joanna Hauser, MD²⁸; Stefan Herms, Dipl.Biol.^{7,26}; Per Hoffmann, PhD^{7,26}; Andrea Hofmann, PhD⁷; Stephane Jamain, PhD³¹; Esther Jiménez, PhD²⁰; Jean-Pierre Kahn, MD, PhD⁴²; Layla Kassem, PhD³; Po-Hsiu Kuo, PhD⁴³; Tadafumi Kato, MD, PhD⁴⁴; John Kelsoe, MD¹²; Sarah Kittel-Schneider, MD⁴⁵; Sebastian Kliwicki, MD⁴⁶; Barbara König, MSc⁴⁷; Ichiro Kusumi, MD⁴⁸; Gonzalo Laje, MD³; Mikael Landén, MD^{49,50}; Catharina Lavebratt, PhD¹⁸; Marion Leboyer, MD, PhD⁵¹; Susan G. Leckband, BSc⁵²; Alfonso Tortorella, MD⁵³; Mirko Manchia, MD, PhD^{54,55}; Lina Martinsson, MD⁵⁶; Michael J.

McCarthy, MD, PhD^{12,57}; Susan McElroy, MD⁵⁸; Francesc Colom, PhD^{59,60}; Marina Mitjans, PhD^{60,61}; Francis M. Mondimore, MD³⁰; Palmiero Monteleone, MD^{62,63}; Caroline M. Nievergelt, PhD¹²; Markus M. Nöthen, MD⁷; Tomas Novák, MD⁶⁴; Claire O'Donovan, MB³⁷; Norio Ozaki, MD⁶⁵; Urban Ösby, MD, PhD⁶⁶; Andrea Pfennig, MD⁶⁷; James B. Potash, MD, MPH³⁰; Andreas Reif, MD⁴⁴; Eva Reininghaus, MD²¹; Guy A. Rouleau, MD⁶⁸; Janusz K. Rybakowski, MD⁴⁵; Martin Schalling, MD¹⁸; Peter R. Schofield, PhD, DSc^{34,35}; Barbara W. Schweizer, RN³⁰; Giovanni Severino, MD²⁹; Paul D. Shilling, PhD¹²; Katsumasa Shimoda, MD⁶⁹; Christian Simhandl, MD⁷⁰; Claire M. Slaney, RN³⁷; Alessio Squassina, PhD²⁹; Thomas Stamm, MD¹³; Pavla Stopkova, MD⁶⁴; Mario Maj, MD⁶³; Gustavo Turecki, MD²⁷; Eduard Vieta, MD, PhD²⁰; Julia Volkert, PhD⁴⁴; Stephanie H. Witt, PhD⁷¹; Adam Wright, MCP⁷²; Peter P. Zandi, PhD⁷³; Philip B. Mitchell, MD⁷²; Michael Bauer, MD, PhD⁶⁷; Martin Alda, MD³⁷; Marcella Rietschel, MD⁷¹; Francis J. McMahon, MD³; Thomas G. Schulze, MD^{3,4,6,30,71}; Bernhard T. Baune, MD, PhD¹

Author Contact: azmerawtayelgn3@gmail.com

AFFILIATIONS

¹Discipline of Psychiatry, School of Medicine, University of Adelaide, Adelaide, SA, Australia

²Northern Adelaide Local Health Network, Mental Health Services, Adelaide, SA, Australia

³Intramural Research Program, National Institute of Mental Health, National Institutes of Health, US Department of Health & Human Services, Bethesda, MD, USA

⁴Institute of Psychiatric Phenomics and Genomics (IPPG), University Hospital, LMU
Munich, Munich, Germany

⁵Department of Psychiatry and Psychotherapy, Ludwig-Maximilian-University Munich,
Munich, Germany

⁶Department of Psychiatry and Psychotherapy, University Medical Center (UMG), Georg-
August University Göttingen, Göttingen, Germany

⁷Institute of Human Genetics, University of Bonn and Department of Genomics, Life &
Brain Center, Bonn, Germany

⁸Epidemiology Branch, Division of Intramural Population Health Research, Eunice
Kennedy Shriver National Institute of Child Health and Human Development, National
Institutes of Health, Bethesda, MD, USA

⁹HSL Institute for Aging Research, Harvard Medical School, Boston, MA, United States

¹⁰Program for Quantitative Genomics, Harvard School of Public Health, Boston, MA,
United States

¹¹Broad Institute of MIT and Harvard, Cambridge, MA, United States

¹²Department of Psychiatry, University of California San Diego, San Diego, CA, United
States

¹³Department of Psychiatry and Psychotherapy, Charité - Universitätsmedizin Berlin,
Campus Charité Mitte, Berlin, Germany

¹⁴Department of Biological Psychiatry and Neuroscience, Dokkyo Medical University
School of Medicine, Mibu, Tochigi, Japan

¹⁵Unit of Clinical Pharmacology, Hospital University Agency of Cagliari, Cagliari, Italy

¹⁶Unitat de Zoologia i Antropologia Biològica (Dpt. Biologia Evolutiva, Ecologia i Ciències Ambientals), Facultat de Biologia and Institut de Biomedicina (IBUB), University of Barcelona, CIBERSAM, Barcelona, Spain

¹⁷Department of Psychiatry, Mood Disorders Unit, HUG - Geneva University Hospitals, Geneva, Switzerland

¹⁸Department of Molecular Medicine and Surgery, Karolinska Institutet, Stockholm, Sweden, and Center for Molecular Medicine, Karolinska University Hospital, Stockholm, Sweden

¹⁹INSERM UMR-S 1144, Université Paris Diderot, Département de Psychiatrie et de Médecine Addictologique, AP-HP, Groupe Hospitalier Saint-Louis-Lariboisière-F. Widal, Paris, France

²⁰Bipolar Disorder Program, Institute of Neuroscience, Hospital Clinic, University of Barcelona, IDIBAPS, Barcelona, Catalonia, Spain

²¹Department of Psychiatry and Psychotherapeutic Medicine, Research Unit for bipolar affective disorder, Medical University of Graz, Graz, Austria

²²Department of Health Sciences Research, Mayo Clinic, Rochester, MN, United States

²³Department of Psychiatry and Psychology, Mayo Clinic, Rochester, MN, United States

²⁴The Neuromodulation Unit, McGill University Health Centre, Montreal, Canada

²⁵Department of Psychiatry & Center of Sleep Disorders, National Taiwan University Hospital, Taipei, Taiwan

²⁶Human Genomics Research Group, Department of Biomedicine, University Hospital Basel, Basel, Switzerland

²⁷Douglas Mental Health University Institute, McGill University, Montreal, Canada

²⁸Psychiatric Genetic Unit, Poznan University of Medical Sciences, Poznan, Poland

²⁹Department of Biomedical Sciences, University of Cagliari, Cagliari, Italy

³⁰Department of Psychiatry and Behavioral Sciences, Johns Hopkins University, Baltimore, MD, United States

³¹Inserm U955, Translational Psychiatry laboratory, Fondation FondaMental, Créteil, France

³²Department of Psychiatry and Psychotherapy, Ludwig-Maximilian-University Munich, Munich, Germany

³³Department of Psychiatry (UPK), University of Basel, Basel, Switzerland

³⁴Neuroscience Research Australia, Sydney, NSW, Australia

³⁵School of Medical Sciences, University of New South Wales, Sydney, NSW, Australia

³⁶Service de psychiatrie, Hôpital Charles Perrens, Bordeaux, France

³⁷Department of Psychiatry, Dalhousie University, Halifax, Nova Scotia, Canada

³⁸Biometric Psychiatric Genetics Research Unit, Alexandru Obregia Clinical Psychiatric Hospital, Bucharest, Romania

³⁹Mood Disorders Center of Ottawa, Ontario, Canada

⁴⁰Molecular Research Center for Children's Mental Development, United Graduate School of Child Development, Osaka University, Osaka, Japan

⁴¹Department of Psychiatry, Osaka University Graduate School of Medicine, Osaka, Japan

⁴²Service de Psychiatrie et Psychologie Clinique, Centre Psychothérapique de Nancy - Université de Lorraine, Nancy, France

⁴³Department of Public Health & Institute of Epidemiology and Preventive Medicine, College of Public Health, National Taiwan University, Taipei, Taiwan

⁴⁴Laboratory for Molecular Dynamics of Mental Disorders, RIKEN Brain Science Institute,
Saitama, Japan

⁴⁵Department of Psychiatry, Psychosomatic Medicine and Psychotherapy, University
Hospital Frankfurt, Frankfurt, Germany

⁴⁶Department of Adult Psychiatry, Poznan University of Medical Sciences, Poznan, Poland

⁴⁷Department of Psychiatry and Psychotherapeutic Medicine, Landeskrankenhaus Neunkirchen,
Neunkirchen, Austria

⁴⁸Department of Psychiatry, Hokkaido University Graduate School of Medicine, Sapporo,
Japan

⁴⁹Institute of Neuroscience and Physiology, the Sahlgrenska Academy at the
Gothenburg University, Gothenburg, Sweden

⁵⁰Department of Medical Epidemiology and Biostatistics, Karolinska Institutet, Stockholm,
Sweden

⁵¹Inserm U955, Translational Psychiatry laboratory, Université Paris-Est-Créteil,
Department of Psychiatry and Addictology of Mondor University Hospital, AP-HP,
Fondation FondaMental, Créteil, France

⁵²Office of Mental Health, VA San Diego Healthcare System, San Diego, CA, United States

⁵³Department of Psychiatry, University of Perugia, Italy

⁵⁴Section of Psychiatry, Department of Medical Sciences and Public Health, University of
Cagliari, Cagliari, Italy

⁵⁵Department of Pharmacology, Dalhousie University, Halifax, NS, Canada

⁵⁶Department of Clinical Neurosciences, Karolinska Institutet, Stockholm, Sweden

⁵⁷Department of Psychiatry, VA San Diego Healthcare System, San Diego, CA, United States

⁵⁸Department of Psychiatry, Lindner Center of Hope / University of Cincinnati, Mason, OH, United States

⁵⁹Mental Health Research Group, IMIM-Hospital del Mar, Barcelona, Catalonia, Spain

⁶⁰Centro de Investigación Biomédica en Red de Salud Mental (CIBERSAM), Instituto de Salud Carlos III, Madrid, Spain

⁶¹Clinical Neuroscience, Max Planck Institute of Experimental Medicine, Göttingen, Germany

⁶²Neurosciences Section, Department of Medicine and Surgery, University of Salerno, Salerno, Italy

⁶³Department of Psychiatry, University of Naples SUN, Naples, Italy

⁶⁴National Institute of Mental Health, Klecany, Czech Republic

⁶⁵Department of Psychiatry & Department of Child and Adolescent Psychiatry, Nagoya University Graduate School of Medicine, Nagoya, Japan

⁶⁶Department of Neurobiology, Care sciences, and Society, Karolinska Institutet and Center for Molecular Medicine, Karolinska University Hospital, Stockholm, Sweden

⁶⁷Department of Psychiatry and Psychotherapy, University Hospital Carl Gustav Carus, Medical Faculty, Technische Universität Dresden, Germany

⁶⁸Montreal Neurological Institute and Hospital, McGill University, Montreal, Canada

⁶⁹Department of Psychiatry, Dokkyo Medical University School of Medicine, Mibu, Tochigi, Japan

⁷⁰Bipolar Center Wiener Neustadt, Sigmund Freud University, Medical Faculty, Vienna,
Austria

⁷¹Department of Genetic Epidemiology in Psychiatry, Central Institute of Mental Health,
Medical Faculty Mannheim, University of Heidelberg, Mannheim, Germany

⁷²School of Psychiatry, University of New South Wales, and Black Dog Institute, Sydney,
Australia

⁷³Department of Mental Health, Johns Hopkins Bloomberg School of Public Health,
Baltimore, MD, United States

Key Points

Question: Does a polygenic score for Schizophrenia (SCZ) predict response to lithium in patients with Bipolar Disorder (BPD)? What are the molecular drivers of the association between SCZ and lithium treatment response?

Findings: We found an inverse association between genetic loading for SCZ risk variants and response to lithium in patients with BPD. Genetic variants in the HLA region on chromosome 6, the antigen presentation pathway and markers of inflammation (TNF α , IL-4, IFN γ) point to molecular underpinnings of lithium treatment response in BPD.

Meaning: In patients with BPD, an assessment of a polygenic load for SCZ risk variants may assist in conjunction with clinical data to predict whether they would respond to lithium treatment.

ABSTRACT

Importance: Lithium is a first-line mood stabilizer for the maintenance treatment of Bipolar Disorder (BPD). However, the efficacy of lithium varies widely, with a non-response rate of up to 30%. Biological response markers and predictors are lacking.

Objective: Genetic factors are thought to mediate lithium treatment response, and the previously reported genetic overlap between BPD and schizophrenia (SCZ) led us to test whether a polygenic score (PGS) for SCZ could predict lithium treatment response in BPD. Further, we explored the potential molecular underpinnings of this association.

Design: Weighted SCZ PGSs were computed at ten p-value thresholds (P_T) using summary statistics from a genome-wide association study (GWAS) of 36,989 SCZ cases, and genotype data for BPD patients from the Consortium on Lithium Genetics (ConLi+Gen). For functional exploration, we performed a cross-trait meta-GWAS and pathway analysis, combining GWAS summary statistics on SCZ and lithium treatment response.

Setting: International multicenter GWAS.

Participants: Patients with BPD who had undergone lithium treatment were genotyped and retrospectively assessed for long-term treatment response ($n=2,586$).

Main outcome measures: Clinical treatment response to lithium was defined on both the categorical and continuous scales using the ALDA score. The effect measures include odds ratios (ORs) and the proportion of variance explained (R^2), and a significant association was determined at $p<0.05$.

Results: The PGS for SCZ was inversely associated with lithium treatment response in the categorical outcome ($p=8 \times 10^{-5}$), at $P_T < 5 \times 10^{-2}$. Patients with BPD who had low polygenic load for SCZ responded better to lithium, with ORs for lithium response ranging from 3.46

[95%CI: 1.42-8.41 at 1st decile] to 2.03 [95%CI: 0.86-4.81 at the 9th decile], compared to the patients in the 10th decile of SCZ risk. In the cross-trait meta-GWAS, 15 genetic loci that may have overlapping effects on lithium treatment response and susceptibility to SCZ were identified. Functional pathway and network analysis of these loci point to the HLA complex and inflammatory cytokines (TNF α , IL-4, IFN γ) as molecular contributors to lithium treatment response in BPD.

Conclusions and Relevance: The study provides, for the first-time, evidence for a negative association between high genetic loading for SCZ and poor response to lithium in patients with BPD. These results suggest the potential for translational research aimed at personalized prescribing of lithium.

Keywords: lithium treatment, schizophrenia, bipolar disorder, polygenic score, GWAS, pharmacogenomics, immune genes, HLA, TNF α , cytokines

INTRODUCTION

Bipolar Disorder (BPD) is a severe and often disabling psychiatric condition, characterized by recurrent dysregulation of mood with episodes of mania and depression. With an early disease onset and an estimated lifetime prevalence of 1%¹ to 4.4%², BPD is associated with high personal impairment and societal costs, accounting for 9.9 million years of life lived with disability worldwide³, and substantially increased all-cause mortality and risk of suicide⁴. The etiology of BPD is complex, and both genetic and environmental factors have been shown to contribute to the pathogenesis of the disorder⁵. The estimated heritability of BPD ranges from 60% to 85%⁶, and candidate gene⁷ and genome-wide association studies (GWASs)⁸⁻¹² have successfully identified genetic loci implicated in the illness. However, only a small fraction of the heritability is accounted for by replicated genetic variants that have been identified so far⁷.

Lithium stabilizing properties were discovered by Australian psychiatrist John Cade back in 1949¹³. Since then, it has retained a status as the ‘gold standard’ mood stabilizer^{14,15}, possessing unique protective effects against both manic and depressive episodes¹⁶, as well as for suicide prevention¹⁷. Consequently, lithium is recommended as first-line maintenance treatment for BPD by several clinical practice guidelines¹⁸⁻²¹. However, there is significant inter-individual variation between lithium treatment responders and non-responders. About 30% of patients are only partially responsive, and more than a quarter show no clinical response at all²². While clinical studies report a combination of demographic and clinical characteristics as potential predictors of treatment response in patients with BPD²³, genetic factors also appear to be highly involved^{22,24-26}. So far, three GWASs have successfully identified single nucleotide polymorphisms (SNPs) associated with lithium treatment

response in BPD pointing to different genetic loci^{22, 27, 28}. To improve the understanding of the molecular mechanisms underlying the therapeutic effects of lithium, alternative genomic approaches can complement GWAS deserve consideration. One such approach is polygenic analysis, which quantifies the combined effects of genetic variants across the whole genome on a given clinical outcome, computed as a weighted summation of effect sizes of multiple independent polymorphisms. An accurate and successful polygenic model may assist early screening for disease risk, clinical diagnosis, and the prediction of treatment response and prognosis. In the current study, we aimed to investigate whether BPD patients with high trait genetic susceptibility for schizophrenia (SCZ), expressed by their SCZ polygenic score (PGS), would respond better or more poorly to lithium compared to BPD patients with a low PGS for SCZ. Additionally, we set out to explore the genetic and molecular underpinnings of any identified association between SCZ and lithium treatment response. A number of previous observations motivated this approach. First, there is increasing evidence for a substantial genetic overlap between BPD and SCZ. The Psychiatric Genomics Consortium (PGC) estimated a shared genetic variation of ~68%, which is the highest among all pairs of psychiatric diagnoses²⁷. Consistent with this, several shared risk genes and shared biological pathways associated with both disorders have been identified^{28,29,30}, and current sample sizes for SCZ far exceed those available for BPD and thus are better powered. Second, despite these genetic and molecular commonalities, lithium is not an effective medication for people suffering from SCZ³¹, and increased SCZ trait loading in those with BPD might be expected to serve as a predictor for poor treatment response. An earlier family study found an association between family history of schizophrenia and poor response to lithium³² Third, during acute illness episodes, BPD and SCZ are often difficult to distinguish clinically

because of overlapping psychotic symptoms such as hallucinations, delusions, and disorganization, as well as some common behavioral disturbances such as irritability or anger³³. Aiming to predict response to lithium, which could potentially confer advantages for patients and their treating physicians³⁴ we sought to evaluate the aggregated effect of genome-wide SNPs for SCZ on lithium treatment response in BPD using a polygenic score approach that was based on the results of the largest SCZ GWAS to date³⁵. Further, in order to explore potential genetic and molecular drivers of any detected association, we carried out a cross-trait GWAS meta-analysis, combining the summary statistics from the largest available GWAS for both SCZ³⁵ and lithium response²². Overlapping SNPs that met genome-wide significance in the meta-GWAS were subsequently analyzed for biological context using the Ingenuity® Pathway Analysis platform (IPA®).

METHODS AND MATERIALS

Study Samples

The International Consortium on Lithium Genetics (ConLi⁺Gen)

The ConLi⁺Gen Consortium (www.ConLiGen.org) is an initiative by the National Institute of Mental Health (NIMH) and the International Group for the Study of Lithium-Treated Patients (IGSLI) (www.IGSLI.org) that was established with the aim of discovering genetic variants responsible for lithium treatment response in BPD³⁶. The ConLi⁺Gen study involved patients with BPD from Europe, South America, USA, Asia, and Australia²² who had been treated with lithium at some stage since diagnosis. The first GWAS based on this initiative was published in 2016²². For the current study, genetic and clinical data collected from 2,586 patients with BPD who were part of the ConLi⁺Gen consortium were analyzed^{22,36}. A series of quality control procedures were implemented on the genotype data before and after imputation as described below.

Genotyping and quality control

The genome-wide genotypes, as well as clinical and demographic data, were collected by 22 participating sites. Quality control (QC) procedures were implemented using PLINK³⁷. Samples with low genotype rates (<95%), sex inconsistencies (X-chromosome heterozygosity), and genetically related individuals were excluded. We also excluded SNPs that had a poor genotyping rate (<95%), an ambiguity (A/T and C/G SNPs), a low minor allele frequency (MAF<1%), or that showed deviation from Hardy-Weinberg Equilibrium ($p < 10^{-6}$).

Imputation

The genotype data passing QC were imputed on the Michigan server³⁸ (<https://imputationserver.sph.umich.edu>) separately for each genotype platform using the 1000 Genomes Project Phase 3 (Version 5) reference panel. During the imputation process, we used the European reference panel for all the samples except for those from Japan and Taiwan, for which the East Asian reference population was used. After excluding the low-frequency SNPs (MAF<10%); low-quality variants (imputation INFO < 0.9); and indels, the imputed dosages were converted to best guess genotypes. The subsequent polygenic analyses were performed using the best guess genotypes.

Discovery GWAS summary data

The PGSs were calculated using the approach previously described by the International Schizophrenia Consortium³⁹. This method requires discovery and target datasets. The discovery data, which refers to the GWAS summary statistics-effect sizes (beta, a log of odds ratio), were obtained from a previously published SCZ GWAS³⁵ that was publicly available for download by the Psychiatric Genomics Consortium (PGC) <http://www.med.unc.edu/pgc/>, accessed on March 18, 2017.

Target outcome

Lithium treatment response in BPD was defined for patients who had received lithium for a minimum of 6 months. Lithium treatment outcome was assessed using the “Retrospective Criteria of Long-Term Treatment Response in Research Subjects with Bipolar Disorder” scale, also known as the ALDA scale^{40,41}. The ALDA scale is a well-validated tool to rate symptom improvements after treatment with lithium in BPD, and it has shown excellent

inter-rater reliability⁴². The ALDA scale quantifies symptom improvement over the course of treatment (A score, range 0–10), which is then weighted against five criteria (B score) that assess confounding factors, each scored 0, 1, or 2. The total score is calculated by subtracting the total B score from the A score, and negative scores are set to zero²². We developed two main outcomes for lithium response (categorical and continuous outcome). The categorical (i.e., good versus poor) response to lithium in BPD was defined based on the total score as a cut-off score of 7, in which patients with a total score of 7 or higher were categorized as “responders”. The ALDA score on subscale A was used as a continuous outcome after excluding individuals with a total B score greater than 4 or who had missing data on the total scores of ALDA subscale A or B²². In addition to the ALDA scale scores, information on covariates such as age and gender was collected, and further details can be found in an earlier publication²².

Polygenic scoring

Quality-controlled SNPs were clumped for linkage disequilibrium based on GWAS association p-value informed clumping using $r^2 = 0.1$ within a 250-kb window to create a SNP-set in linkage equilibrium using PLINK software run on Linux (*plink --clump-p1 1 --clump-p2 1 --clump-r2 0.1 --clump-kb 250*). Then, the SNPs at ten p-value thresholds ($<1 \times 10^{-4}$, $<1 \times 10^{-3}$, <0.01 , <0.05 , <0.1 , <0.2 , <0.3 , <0.4 , <0.5 , <1) were selected to compute the SCZ PGSs in the ConLi⁺Gen sample. The major histocompatibility complex region was excluded from the PGS calculation because of its complex linkage disequilibrium structure. A genome-wide weighted SCZ PGS for each participant was calculated at each p-value threshold (P_T) as the sum of independent SNPs genotype dosage (from 0 to 2) of the reference allele in the ConLi⁺Gen genotype data, multiplied by SCZ GWAS effect sizes for

the reference allele, estimated as log (OR) divided by the total number of SNPs in each threshold.

STATISTICAL ANALYSES

For statistical analyses, we applied PGS association analyses, cross-trait meta-GWAS, and Ingenuity Pathway Analysis (IPA) of the cross-trait findings. The details for each analysis are described below.

Polygenic score association analysis

Once the PGSs were constructed, the association of the PGSs at each P_T and lithium treatment response was evaluated using regression models. While a binary logistic regression was implemented for the categorical outcome (response versus non-response), a linear regression was applied to lithium treatment response on the continuous scale. Using the PGS at the most significant threshold ($P_T < 5 \times 10^{-2}$), we divided the study samples into ten deciles (1st to 10th), ranging from the lowest polygenic load (1st decile) to the highest polygenic load (10th decile). The most significant threshold refers to the P_T at which the PGS for SCZ and lithium treatment outcomes were most strongly associated (i.e., the smallest p-value). Using binary logistic and linear regression modeling, we compared BPD patients with lower polygenic load (1st to 9th deciles) for SCZ with patients with the highest polygenic load (10th decile), to quantify the effect of SCZ polygenic load on lithium treatment outcomes. Associations were considered significant at $p < 0.05$.

The PGS association analyses were adjusted for the covariates age, gender, genotyping platform, and 7 principal components (PCs) calculated in PLINK. The analyses were performed using R for Statistical Computing and PLINK 1.9 for Linux³⁷. Prediction accuracy, the percentage of variance in lithium response accounted for by the PGS at each

P_T , was estimated as the variance explained by the full model including each PGS and covariates minus the variance explained by the model including only covariates.

Cross-trait meta-analysis of genome-wide association studies

Biologically, a significantly associated PGS implies that genetic factors influencing the two traits are overlapping. Thus, further analyses were performed to identify genetic polymorphisms that are likely to both increase the susceptibility to SCZ and influence treatment response to lithium in patients with BPD. We performed cross-trait meta-analyses by combining the summary statistics for GWAS on lithium response from the ConLi+Gen²² and GWAS on SCZ from the PGC³⁵. We applied both the O'Brien's (OB) method and the direct Linear Combination of dependent test statistics (dLC) approach^{43,44}, which are implemented in the C++ eLX package. Briefly, the OB and dLC approach, combine univariate meta-GWAS data (beta coefficients or Z-scores) for each SNP^{43,44}.

The methods follow an inverse-variance meta-analysis approach and directly combine correlated Z-scores (as in meta-analyses) considering the correlation within the univariate test statistics and estimated variances between the traits. The OB method is more powerful when the summary statistics are homogeneous (not very different) and in the similar direction, while dLC is better when the test statistics are either heterogeneous or in opposite directions. Because they often vary based on the sign of the Z-scores, the smallest p-value on either of the two tests could be used to determine statistical significance. Further details are available elsewhere^{43,44}.

In this cross-trait meta-analysis, for each SNP we combined GWAS association Z-scores from the SCZ study³⁵ with the GWAS association Z-scores for lithium treatment response in the ConLi+Gen study²² separately for the categorical and continuous outcomes. Each

analysis generates two test statistics and associated p-values, one for the OB method and one for the dLC method. Statistical significance of the cross-trait association was determined based on the smaller of the two p-values. The results were considered significant if (1) the p-value for the cross-trait meta-analysis reached genome-wide significance ($p < 5 \times 10^{-8}$), and; (2) the univariate meta-GWAS effects were at least nominally significant for both SCZ and lithium response ($p < 0.01$). For each cross-trait meta-analysis, only one independent lead SNP per locus was reported. Nearby SNPs in LD ($r^2 > 0.1$) with the lead SNP were considered dependent and belonging to the same locus.

Ingenuity® Pathway Analysis (IPA®)

To characterize the potential biological significance of the SNPs discovered from the cross-trait meta-analyses, we performed analyses using QIAGEN's Ingenuity® Pathway Analysis (IPA®, QIAGEN Redwood City, CA, USA, www.qiagen.com/ingenuity).

To prepare the input genes for IPA, we followed a three-step bioinformatics approach:

Step 1: We defined tagSNPs that are in high linkage disequilibrium (LD: $r^2 > 0.5$) and within a ± 500 -kb region with the meta-GWAS significant SNPs (gSNPs) using the genetic catalog of the 1000 Genomes project phase 3, October 2014 release⁴⁵. *Step 2:* The gSNPs and tagSNPs from step 1 were mapped to the genes in which they are located. This generated a list of hosting genes (hGenes).

Step 3: We performed an expression quantitative trait loci (eQTL) lookup in three databases, searching for any nearby genes (eGenes) whose expression was associated with each of the gSNPs and tagSNPs from step-1. These databases contained the results of eQTL-mapping studies from blood and/or brain tissues: 1) Westra et al⁴⁶ at $FDR < 0.05$ <http://genenetwork.nl/bloodeqtlbrowser/>, 2) Almanac (Braineac)⁴⁷ at $p < 1 \times 10^{-5}$

<http://www.braineac.org/>, and 3) Genotype-Tissue Expression (GTEx) data release V6p (dbGaP Accession phs000424.v6.p1) accessed from the GTEx Portal on February 8, 2017, at <https://www.gtexportal.org/home/>.

Finally, the combined list of hGenes and eGenes was used as input into the IPA software after removing gene duplicates. IPA compares the proportion of input genes mapping to a biological pathway to the reference genes list in the ingenuity databases. The significance of the overrepresented canonical pathways and functional networks is determined using the right-tailed Fisher's exact test and later adjusted for multiple testing using the Benjamini-Hochberg (BH) method⁴⁸. Significant results were determined at BH adjusted P-value <0.01.

RESULTS

Sample characteristics and lithium treatment response rates

In total, 3,193 patients with BPD who had undergone lithium treatment and had available genotype and clinical data participated in the study. After QC, 2,586 patients remained for analysis, of whom 2,366 were of European ancestry and the rest Asian. The mean (sd) age of all the patients combined was 47.2 (13.9) years and 2,052 (62.7%) were female. In all, 704 (27.2%) had a good response to lithium treatment (ALDA score ≥ 7). The mean (sd) ALDA score for all participants was 4.9 (3.1) (Table 1).

Table 1: The characteristics of patients with BPAD and outcomes with lithium treatment

Patient characteristics	Categorical outcome^a Good versus poor response	Continuous scale^b ALDA score on subscale A
BPAD patients (N)	2,586	2,244
Responders, N (%)	704 (27.2)	-
Age at interview, mean (s.d)	47.2 (13.9)	47.4 (13.9)
Sex, Women, N (%)	1,478 (57.2%)	1,291(57.5%)
ALDA scale A score, mean (s.d)	6.2(3.0)	6.3 (3.0)
ALDA scale total B mean (s.d)	2.5(1.7)	2.1 (1.2)
ALDA scale total mean (s.d)	4.1(3.2)	4.5(3.1)

Legend: BPAD: Bipolar affective disorder; ^aTotal ALDA score ≥ 7 was defined as good response; ^bSubjects with total B score >4 or who had missing data on the total scores on ALDA subscale A or B were excluded.

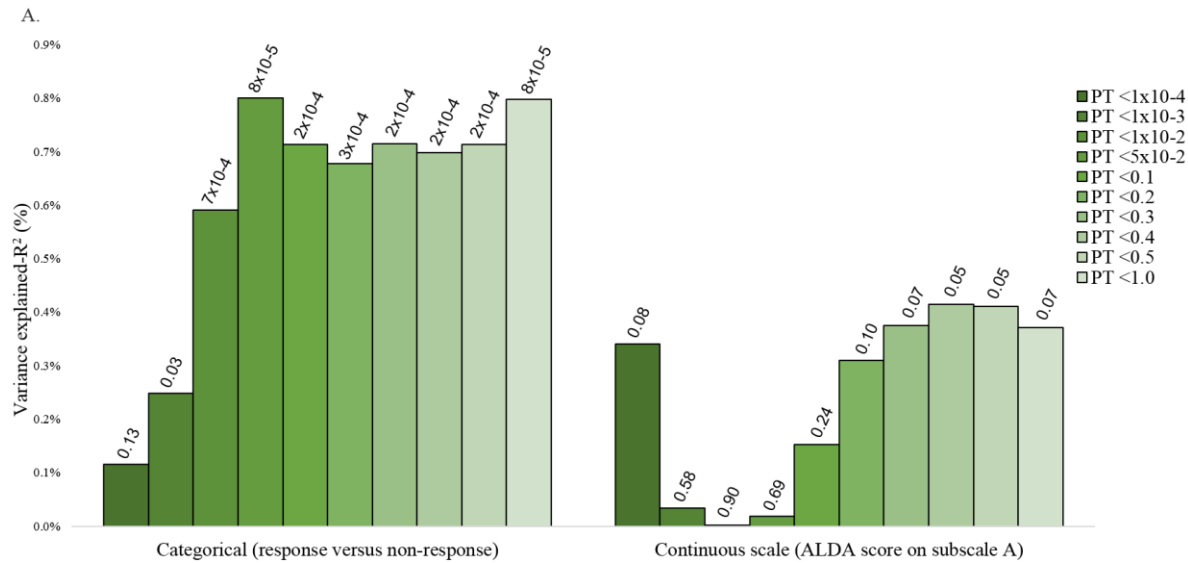
Associations of SCZ PGS with lithium treatment response in BPD patients

At the most significantly associated threshold ($P_T < 5 \times 10^{-2}$), the PGS for SCZ was strongly associated with lithium treatment response in BPD ($p = 8 \times 10^{-5}$) for the categorical outcome on the ALDA scale (Figure 1), explaining 0.8% of the variance. For the continuous outcome (total score on the ALDA subscale A), the direction of association was congruent with the finding on the categorical outcome, but was not statistically significant ($p > 0.05$). The association results of the categorical and continuous outcomes at each threshold levels are detailed in Figure 1. In each threshold, a lower polygenic load for SCZ was associated with a favorable lithium treatment response in patients with BPD (Table 2 & Figure 1).

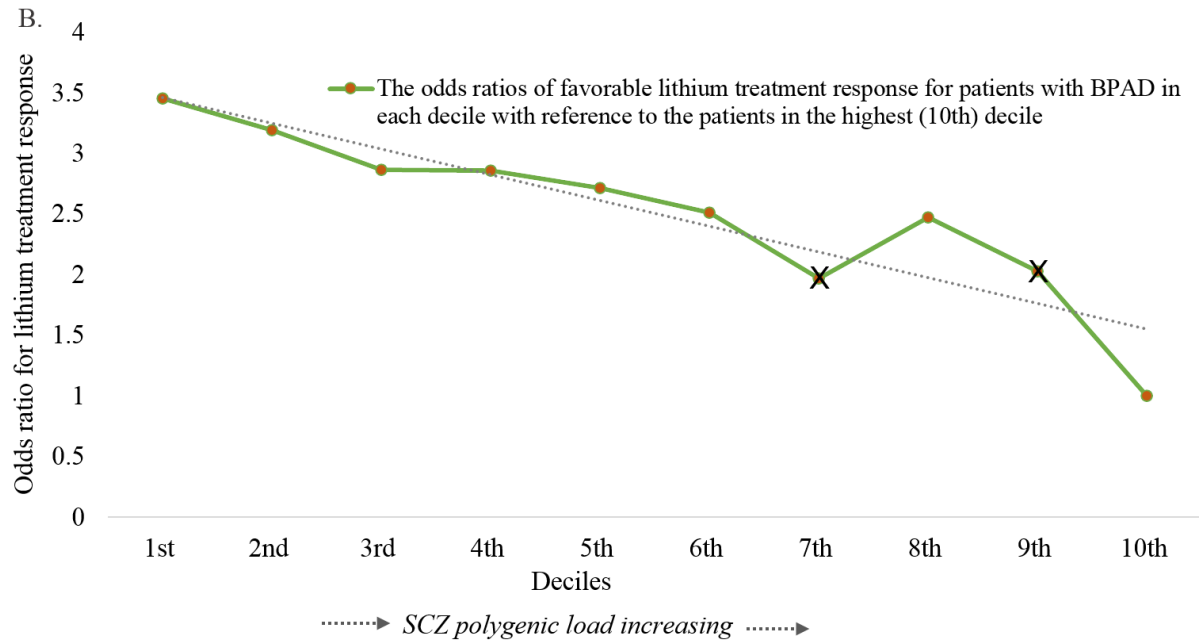
Table 2 shows the odds ratios (OR) for the association between lithium treatment response in BPD and SCZ PGS in deciles, comparing the response status of patients in the low polygenic load categories (1st to 9th deciles) with patients in the highest polygenic load category for SCZ (in the 10th decile). Results demonstrate that BPD patients who carry a lower polygenic load for SCZ have higher odds of favorable lithium treatment response, compared to patients carrying a high polygenic load. In other words, the OR of favorable treatment response decreased as the genetic load for SCZ increased, ranging from an OR 3.46 [95%CI: 1.42-8.41] at 1st decile to OR 2.03 [95%CI: 0.86-4.81] at the 9th decile, compared to the reference SCZ PGS at the 10th decile. As well, there was a highly significant linear trend in the association between the PGS at deciles and lithium treatment response (Table 1 & Figure 1).

Figure 1: The graph shows (A) the association of polygenic score (PGS) for schizophrenia (SCZ) and lithium treatment response defined as a categorical and continuous scale, at different SCZ GWAS p-value thresholds; and (B) trends in the odds ratios for favorable

lithium treatment response for BPD patients in the low SCZ deciles (1st to 9th) compared to patients in the highest (10th) SCZ PGS decile, estimated at the most significant p-value thresholds ($P_T < 5 \times 10^{-2}$) (n=2,586).



Legend figure 1a: The y-axis (R^2) refers to the percentage of variance in lithium treatment response accounted for by the PGSs of SCZ at a particular p-value threshold. On the x-axis, plotted from left to right, are the GWAS p-value thresholds used to group single nucleotide polymorphisms (SNPs) for PGSs. On the top of each bar are the p-values of the association between the PGS for SCZ and lithium treatment response.



Legend figure 1b: The effect sizes on the y-axis are estimated in odds ratios and on the x-axis are SCZ PGS deciles (1st to 10th). X-sign on the line plot indicates that the association is not statistically significant at that particular decile.

Table 2: The odds ratios of favorable lithium treatment response (categorical outcome) in patients with BPAD, comparing the response status of patients in the low PGS decile for SCZ with patients with the highest polygenic load for SCZ (10th decile).

SCZ PGS in categories (deciles)	Patients with BPAD (n=2,586)		
	^a R/N	unadjusted OR (95% CI)	^b Adjusted OR (95% CI)
1st lowest score	83/175	1.97 (1.32-2.96)	3.46 (1.42-8.41)
2nd	80/179	1.86 (1.24-2.79)	3.19 (1.32-7.74)
3rd	78/180	1.80 (1.20-2.71)	2.87 (1.18-6.95)
4th	76/184	1.72 (1.14-2.59)	2.86 (1.18-6.91)
5th	76/180	1.76 (1.17-2.64)	2.71 (1.12-6.55)
6th	67/194	1.44 (0.95-2.18)	2.50 (1.03-6.05)
7th	58/200	1.21 (0.79-1.85)	1.97 (0.81-4.79)
8th	75/184	1.70 (1.13-2.55)	2.47 (1.03-5.96)
9th	61/198	1.28 (0.84-1.95)	2.03 (0.86-4.81)
10th highest score	50/208	1 (reference)	1 (reference)

Legend: The reference decile refers to the PGS category with the highest polygenic load for schizophrenia (10th decile, at $P_T < 5 \times 10^{-2}$).

^a R/N: number of lithium responders versus non-responders; ^b adjusted for age, sex, genotyping platform and 7-principal components. SCZ: schizophrenia, PGS: polygenic score, OR: odds ratio

Cross-trait meta-analysis of GWAS for lithium treatment response in BPD, and GWAS for SCZ

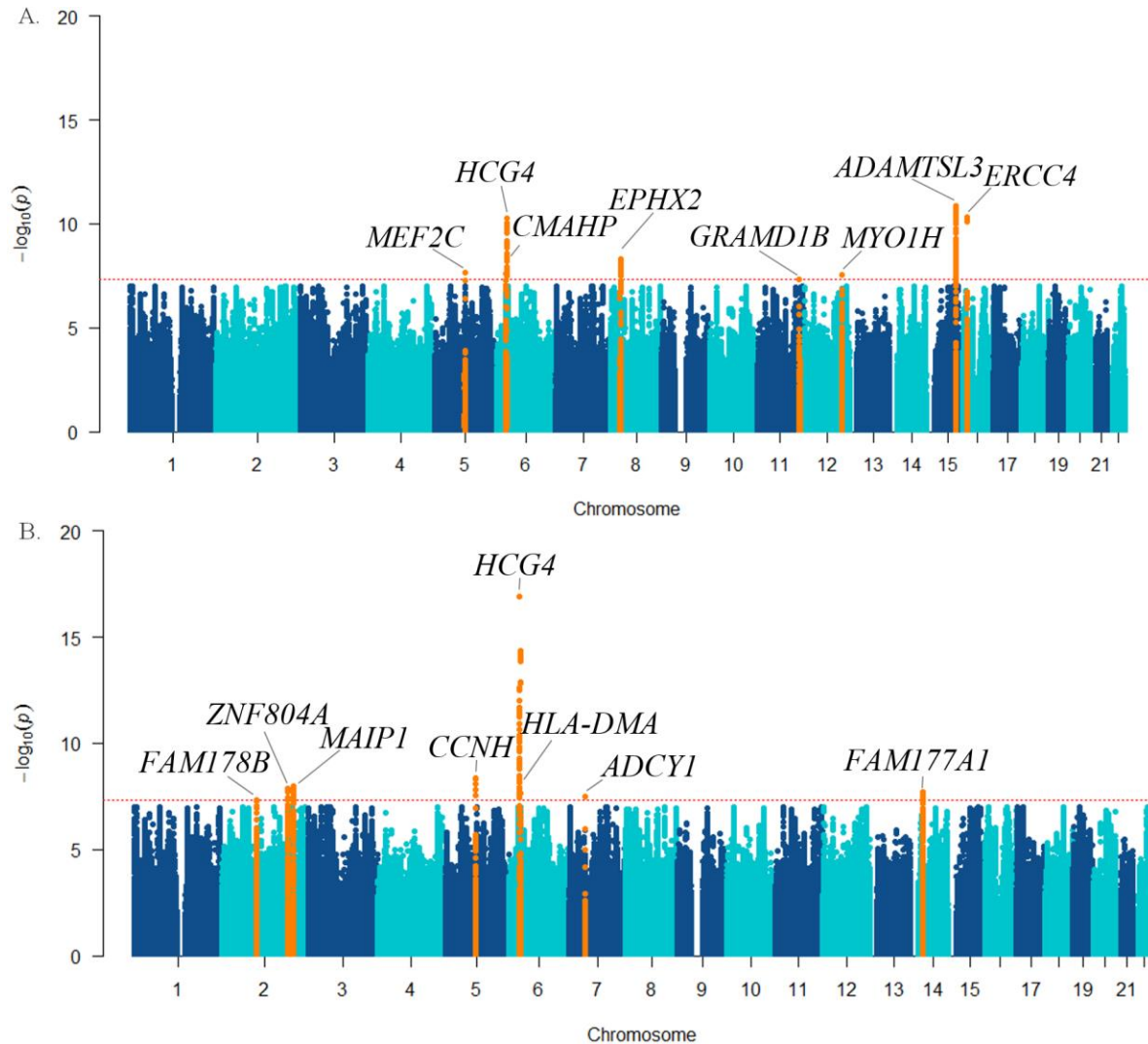
Subsequent to the PGS analysis, we performed a SNP-based cross-trait meta-analysis by combining the summary statistics for the GWASs on: 1) SCZ and lithium treatment response in the categorical outcome; and 2) SCZ and lithium treatment response in the continuous outcome — with the aim of identifying individual genetic variants implicated in the genetic susceptibility to SCZ and lithium treatment response. This meta-analysis yielded 15 loci with p-values below the genome-wide significance level ($p < 5 \times 10^{-8}$) (Table 3, Figure 2). The top six loci and closest genes were: rs144373461 ($p = 1.28 \times 10^{-17}$; *HCG4*), rs66486766 ($p = 1.38 \times 10^{-11}$; *ADAMTSL3*), rs7405404 ($p = 4.62 \times 10^{-11}$; *ERCC4*), rs142425863 ($p = 5.13 \times 10^{-11}$; *HCG4*), rs3919583 ($p = 4.54 \times 10^{-9}$; *CCNH*); and rs59724122 ($p = 5.16 \times 10^{-9}$; *EPHX2*)

Table 3: Loci resulting from cross-trait meta-analysis of GWASs for lithium treatment response in BPAD patients and GWAS for SCZ ($P_{\text{univariateGWAS}} < 1 \times 10^{-2}$ and cross-trait $P_{\text{cross-trait}} < 5 \times 10^{-8}$).

SNP	CHR	BP	A1	A2	Schizophrenia	Lithium Categorical	Cross-trait	Effect direction	Nearby gene
rs324899	5	87915582	A	G	5.82×10^{-7}	4.63×10^{-3}	2.28×10^{-8}	--	<i>MEF2C</i>
rs6942227	6	25177508	A	G	9.86×10^{-8}	8.45×10^{-3}	2.53×10^{-8}	+-	<i>CMAHP</i>
rs142425863	6	29751753	T	C	2.50×10^{-10}	9.92×10^{-3}	5.13×10^{-11}	--	<i>HCG4</i>
rs59724122	8	27424696	T	C	2.22×10^{-8}	7.21×10^{-3}	5.16×10^{-9}	+-	<i>EPHX2</i>
rs61123830	11	123392846	A	G	2.85×10^{-6}	2.60×10^{-3}	4.53×10^{-8}	--	<i>GRAMD1B</i>
rs7959663	12	109884367	C	G	4.74×10^{-5}	2.06×10^{-4}	2.79×10^{-8}	--	<i>MYO1H</i>
rs66486766	15	84806060	A	G	1.07×10^{-10}	4.95×10^{-3}	1.38×10^{-11}	--	<i>ADAMTSL3</i>
rs7405404	16	13749859	T	C	3.93×10^{-10}	5.27×10^{-3}	4.62×10^{-11}	++	<i>ERCC4</i>
					Schizophrenia	Continuous			
rs6728642	2	97607071	A	G	1.10×10^{-4}	1.34×10^{-4}	4.81×10^{-8}	--	<i>FAM178B</i>
rs62200793	2	185750642	T	C	1.70×10^{-7}	5.45×10^{-3}	1.40×10^{-8}	++	<i>ZNF804A</i>
rs7588746	2	200986345	A	G	2.08×10^{-7}	6.33×10^{-3}	3.91×10^{-8}	+-	<i>MAIP1</i>
rs3919583	5	86947591	A	C	4.18×10^{-6}	2.65×10^{-4}	4.54×10^{-9}	--	<i>CCNH</i>
rs144373461	6	29751005	A	C	8.30×10^{-17}	3.93×10^{-3}	1.28×10^{-17}	--	<i>HCG4</i>
rs209474	6	32924584	A	G	7.49×10^{-7}	3.41×10^{-3}	2.20×10^{-8}	--	<i>HLA-DMA</i>
rs1521470	7	45646852	A	G	2.41×10^{-6}	3.92×10^{-4}	3.23×10^{-8}	+-	<i>ADCY1</i>
rs79403677	14	35539131	T	G	2.91×10^{-7}	2.04×10^{-3}	1.92×10^{-8}	+-	<i>FAM177A1</i>

A1, effect allele; A2, other allele; Effect direction: the effect of the SNPs on schizophrenia and lithium treatment response oriented to the reference allele. Nearest genes were based on refseq genes (build 37).

Figure 2: Manhattan plot showing the result of cross-trait meta-analysis of GWASs on SCZ and the GWASs on lithium treatment response in BPD as A) categorical outcome; and B) continuous scale, highlighting the loci that showed genome-wide significance (orange), and the nearest genes (top).



Legend figure 2: The $-\log_{10}$ (cross-trait p-value) is plotted against the physical position of each SNP on each chromosome. The threshold for genome-wide significance (cross-trait p-value $< 5 \times 10^{-8}$) is indicated by the red dotted horizontal line.

To characterize the functional implications of identified SNPs, we undertook IPA pathway analysis using query gene inputs generated from the results of the cross-trait and eQTL analyses. These genes included 33 hGenes hosting the gSNPs and tagSNPs, as well as the eQTL genes identified from the three databases — 27 eGenes from Westra et al, 23 eGenes from Almanac (Braineac) and 31 eGenes in GTEx portal. Table 4 gives the list of 82 unique genes used as input for IPA.

Table 4: Combined list of eGenes and hGenes used as an input in the Ingenuity Pathway

Analysis (IPA)

Hosting Genes	eQTL genes (eGenes) lookup in			All combined Duplicates removed
	Westra	BRAINEAC	GTEx	
<i>HLA-F</i>	<i>HLA-G</i>	<i>ADAMTSL3</i>	<i>HLA-K</i>	<i>AC103965.1, ACACB</i>
<i>HCG4</i>	<i>ANKRD36</i>	<i>EPHX2</i>	<i>HLA-F-AS1</i>	<i>ADAMTSL3, ADCY1</i>
<i>HLA-DMB</i>	<i>SRP54</i>	<i>HLA-F</i>	<i>HLA-H</i>	<i>ANKRD36, BAZ1A</i>
<i>HLA-DMA</i>	<i>UBE3B</i>	<i>IFITM4P</i>	<i>HLA-F</i>	<i>BRD2, CASP14</i>
<i>BRD2</i>	<i>KCTD10</i>	<i>MMAB</i>	<i>ZFP57</i>	<i>CHRNA2, CMAHP</i>
<i>FAM178B</i>	<i>ACACB</i>	<i>NACAD</i>	<i>HLA-V</i>	<i>CSPG4P11, EFTUD1P1</i>
<i>ANKRD36</i>	<i>NMB</i>	<i>SEC11A</i>	<i>HCG4P11</i>	<i>EPHX2, FAM177A1</i>
<i>ZNF804A</i>	<i>KIAA0391</i>	<i>TRIM26</i>	<i>PPP2R3C</i>	<i>FAM178B, GABBR1</i>
<i>TMEM161B</i>	<i>PPP1R11</i>	<i>TRIM35</i>	<i>CSPG4P11</i>	<i>GOLGA6L4, GOLGA6L5P</i>
<i>MEF2C</i>	<i>HLA-F</i>	<i>UBE3B</i>	<i>ZSCAN2</i>	<i>GPNMB, HCG4</i>
<i>ADCY1</i>	<i>ZNRD1</i>	<i>WDR73</i>	<i>HLA-W</i>	<i>HCG4B, HCG4P11, HCG4P5</i>
<i>MYO1H</i>	<i>MMAB</i>	<i>ZNF592</i>	<i>IFITM4P</i>	<i>HFE, HLA-A, HLA-DMA</i>
<i>KCTD10</i>	<i>EPHX2</i>	<i>HCG4B</i>	<i>HLA-A</i>	<i>HLA-DMB, HLA-DOB, HLA-DPBI</i>
<i>UBE3B</i>	<i>TAP2</i>	<i>ZNRD1ASP</i>	<i>HLA-U</i>	<i>HLA-F, HLA-F-AS1, HLA-G</i>
<i>MMAB</i>	<i>HLA-DPBI</i>	<i>SCAND2P</i>	<i>HLA-J</i>	<i>HLA-H, HLA-J, HLA-K, HLA-T</i>
<i>MVK</i>	<i>HLA-DMB</i>	<i>KIAA1920</i>	<i>MICF</i>	<i>HLA-U, HLA-V, HLA-W, IFITM4P</i>
<i>IGBP1P1</i>	<i>HLA-DMA</i>	<i>LOC100128364</i>	<i>MVK</i>	<i>IGBP1P1, KCTD10, KIAA0391</i>
<i>SRP54</i>	<i>HLA-DOB</i>	<i>LOC285830</i>	<i>EFTUD1P1</i>	<i>KIAA1920, LMAN2L</i>
<i>FAM177A1</i>	<i>LMAN2L</i>	<i>LOC440297</i>	<i>GOLGA6L4</i>	<i>LOC100128364, LOC285830</i>
<i>PPP2R3C</i>	<i>GABBR1</i>	<i>LOC440300</i>	<i>CHRNA2</i>	<i>LOC440297, LOC440300</i>
<i>KIAA0391</i>	<i>PSMB9</i>	<i>LOC642288</i>	<i>IGBP1P1</i>	<i>LOC642288, LOC727858</i>
<i>PSMA6</i>	<i>BRD2</i>	<i>LOC727858</i>	<i>BAZ1A</i>	<i>LOC728121, MEF2C, MICD</i>

<i>ADAMTSL3</i>	<i>MEF2C</i>	<i>LOC728121</i>	<i>MICE</i>	<i>MICE, MIC, MMAB, MVK</i>
<i>GOLGA6L5P</i>	<i>PPP2R3C</i>		<i>HCG4P5</i>	<i>MYO1H, NACAD, NMB</i>
<i>UBE2Q2P1</i>	<i>CMAHP</i>		<i>MICD</i>	<i>PPP1R11, PPP2R3C, PSMA6</i>
<i>ZSCAN2</i>	<i>GPNMB</i>		<i>HLA-G</i>	<i>PSMB9, SCAND2P, SEC11A</i>
<i>SCAND2P</i>	<i>SEC14L3</i>		<i>HLA-T</i>	<i>SEC14L3, SRP54, TAP2</i>
<i>WDR73</i>			<i>GOLGA6L5P</i>	<i>TMEM161B, TRIM26, TRIM35</i>
<i>NMB</i>			<i>HFE</i>	<i>UBE2Q2P1, UBE3B</i>
<i>SEC11A</i>			<i>CASP14</i>	<i>WDR73, ZFP57, ZNF592</i>
<i>ZNF592</i>			<i>AC103965.1</i>	<i>ZNF804A, ZNRD1</i>
<i>GPNMB</i>				<i>ZNRD1ASP, ZSCAN2</i>
<i>LOC440300</i>				

We then assessed how these genes are enriched with canonical pathways in the Ingenuity database. The most significantly represented canonical pathways and enriched genes are shown in Table 5. The top 5 IPA® canonical pathways include: *Antigen Presentation Pathway*, *OX40 Signaling Pathway*, *Autoimmune Thyroid Disease Signaling*, *Cdc42 Signaling*, and *B Cell Development* (Table 5). These pathways were predominantly identified on the basis of several HLA genes — *HLA-A*, *HLA-DMA*, *HLA-DMB*, *HLA-DOB*, *HLA-DPB1*, *HLA-F*, *HLA-G*, *PSMB9*, and *TAP2*.

Table 5: The top canonical signaling pathways enriched for genes identified in the cross-trait meta-analyses

Ingenuity Canonical Pathways	Enriched genes	P-value^s
Antigen Presentation Pathway	<i>HLA-DPBI, HLA-A, TAP2, HLA-DMA, HLA-DMB, HLA-G, HLA-DOB, PSMB9, HLA-F</i>	7.94x10 ⁻¹⁶
OX40 Signaling Pathway	<i>HLA-DPBI, HLA-A, HLA-DMA, HLA-DMB, HLA-G, HLA-DOB, HLA-F</i>	4.47x10 ⁻¹⁰
Autoimmune Thyroid Disease Signaling	<i>HLA-A, HLA-DMA, HLA-DMB, HLA-G, HLA-DOB, HLA-F</i>	2.29x10 ⁻⁹
Cdc42 Signaling	<i>HLA-DPBI, HLA-A, HLA-DMA, HLA-DMB, HLA-G, HLA-DOB, HLA-F</i>	1.07x10 ⁻⁷
B Cell Development	<i>HLA-A, HLA-DMA, HLA-DMB, HLA-DOB</i>	1.55x10 ⁻⁶
Nur77 Signaling in T Lymphocytes	<i>HLA-A, HLA-DMA, HLA-DMB, HLA-DOB</i>	1.82x10 ⁻⁵
Calcium-induced T Lymphocyte Apoptosis	<i>HLA-A, HLA-DMA, HLA-DMB, HLA-DOB</i>	2.95x10 ⁻⁵
Th1 Pathway	<i>HLA-DPBI, HLA-A, HLA-DMA, HLA-DMB, HLA-DOB</i>	3.63x10 ⁻⁵
Th2 Pathway	<i>HLA-DPBI, HLA-A, HLA-DMA, HLA-DMB, HLA-DOB</i>	6.03x10 ⁻⁵
T Helper Cell Differentiation	<i>HLA-A, HLA-DMA, HLA-DMB, HLA-DOB</i>	4.79x10 ⁻⁵

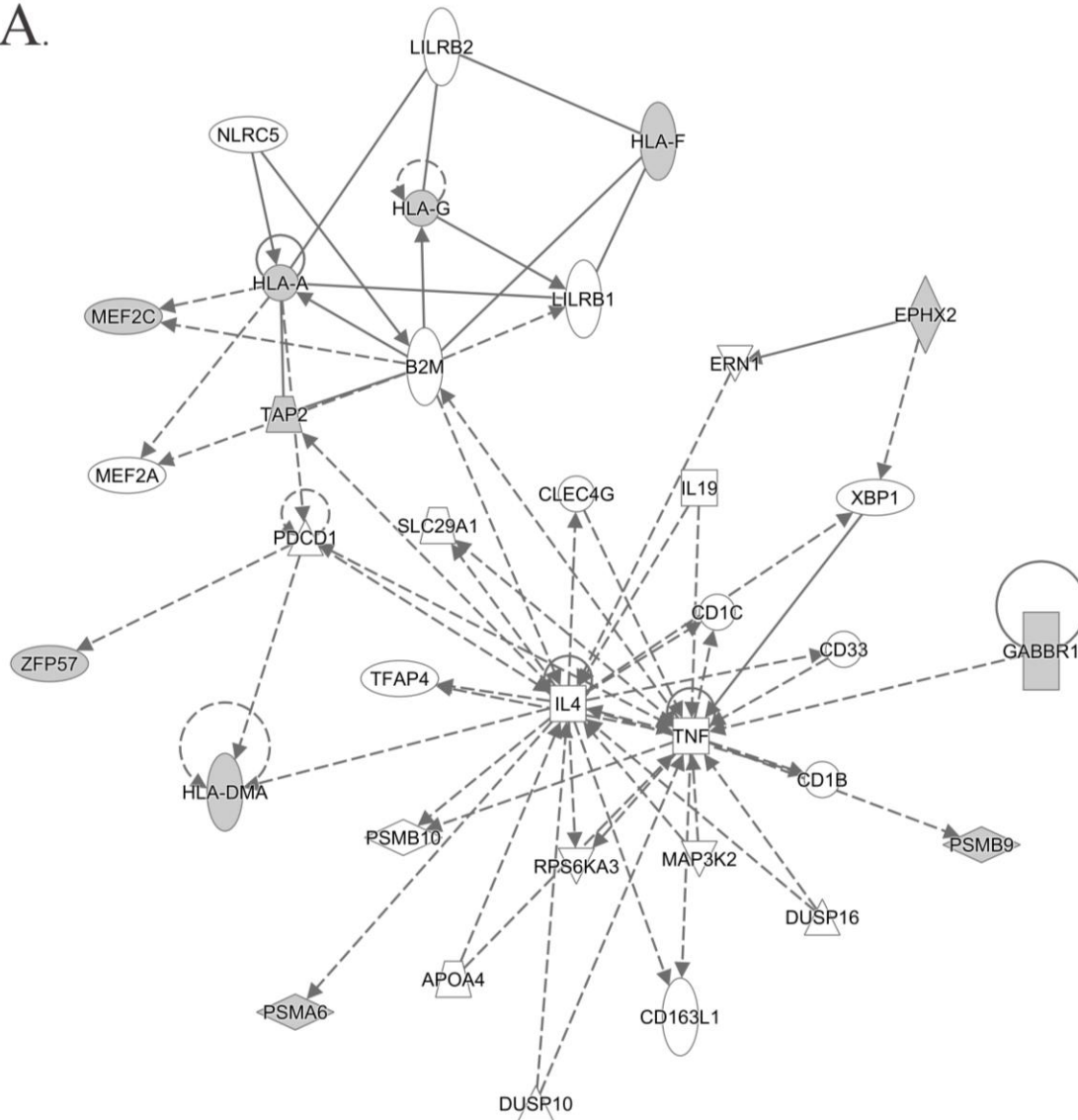
Legend: ^aP-values were adjusted by Benjamini & Hochberg (BH) method⁴⁸. The top canonical pathways and enriched genes are determined at BH adjusted P-value <0.01. The P-value reflects the likelihood that the association between a set of input genes and a given canonical pathways are statistically significant.

Brief description: **OX40**-is a member of the tumour necrosis factor receptor (TNFR) -superfamily; **Cdc42**-Cell division control protein 42 homolog is a protein involved in regulation signalling pathways that control cellular functions including cell morphology, cell migration, endocytosis and cell cycle progression; **Nur77** is a member of nuclear receptor family involved in mediating inflammatory responses and it also induces apoptosis; **Th1/Th2** are pathways related to type 1 and type 2 T helper cells that play a vital role in the adaptive immune system. These pathways regulate immune responses by releasing T cell cytokines.

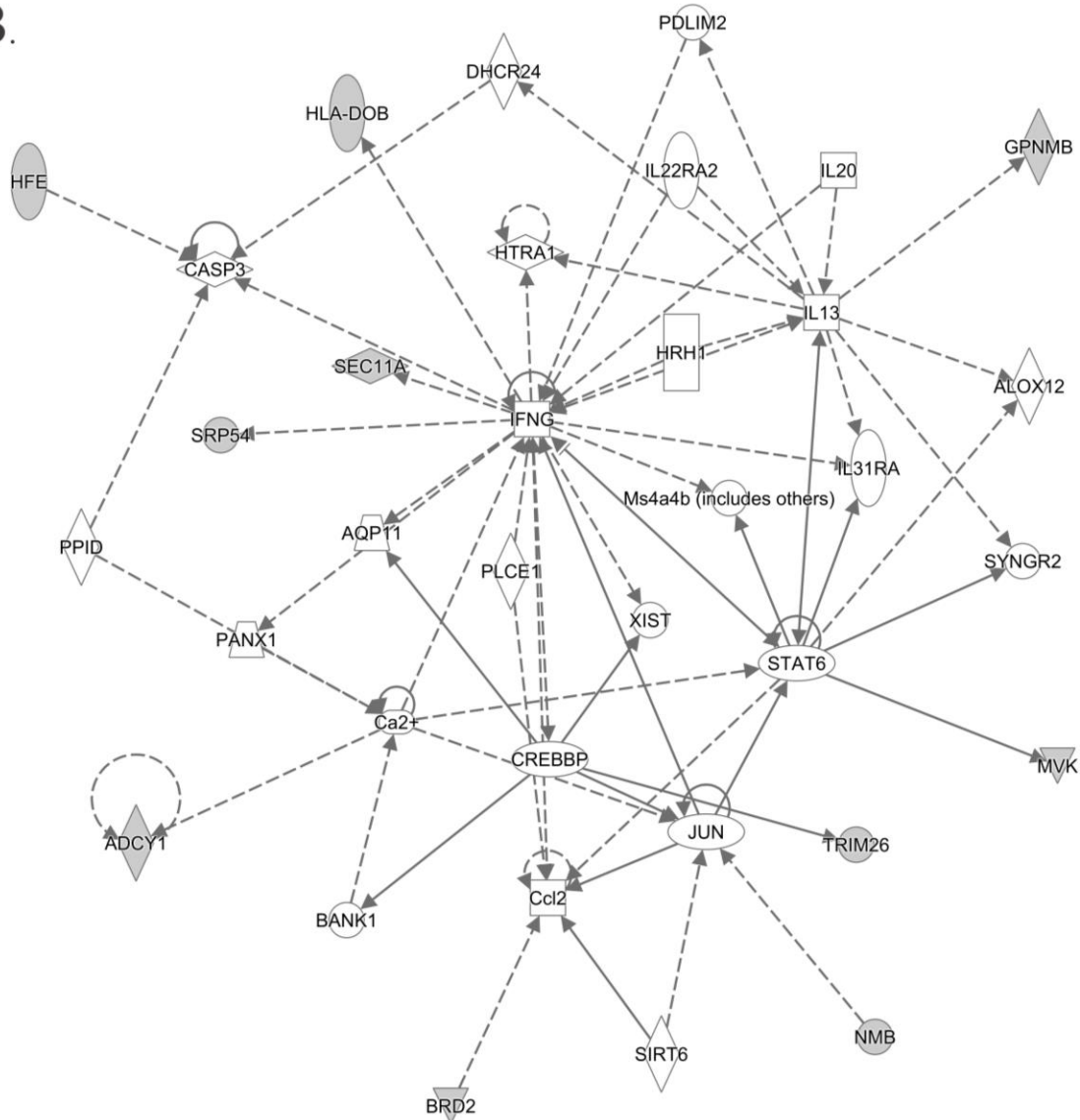
The IPA® network analysis revealed 2 relevant functional networks (Table 6). As it can be seen in Figure 3, the top 2 networks indicate that tumor necrosis factor alpha (TNF α), Interleukin-4 (IL-4), and interferon gamma (IFN γ) might represent important functional molecular nodes in the interaction between lithium response and SCZ.

Figure 3: Indicates the top networks of molecules in IPA, in which TNF α , IL-4 and IFNG represent the main functional nodes mediating the genetic interaction between lithium response and SCZ; shown as network for a) group 1 and b) group 2 molecules in Table 6.

A.



B.



Legend Figure 3: IPA generates the network using a proprietary algorithm, and included genes that could contribute to the network, even if they were not contained in the original dataset.

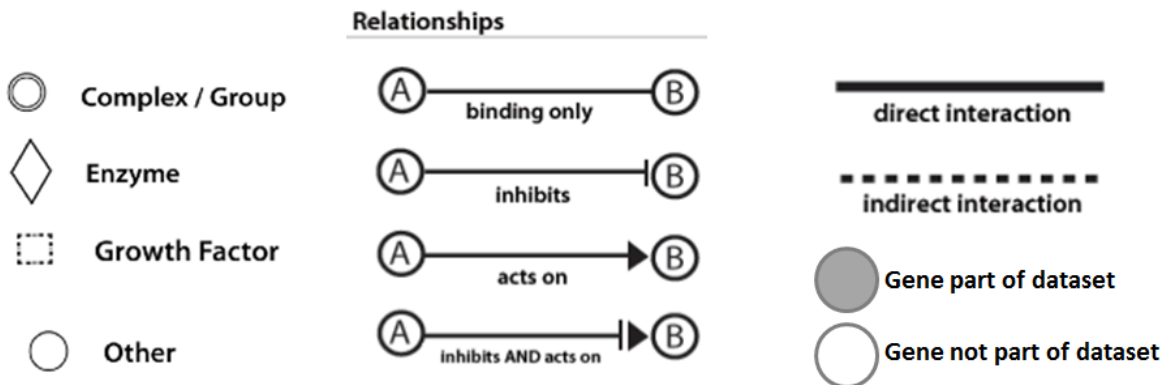


Table 6: Top IPA protein networks, molecules in network and top diseases functionally related to the network

Group	Molecules in Network	P-score	Focus Molecules	Top Diseases and Functions
1	APOA4, B2M, CD33, CD163L1, CD1B, CD1C, CLEC4G, DUSP10, DUSP16, EPHX2 , ERN1, GABBR1 , HLA-A , HLA-DMA , HLA-F , HLA-G , IL4, IL19, LILRB1, LILRB2, MAP3K2, MEF2A, MEF2C , NLRC5, PDCD1, PSMA6 , PSMB9 , PSMB10, RPS6KA3, SLC29A1, TAP2 , TFAP4, TNF, XBP1, ZFP57	20	11	Hematological System Development and Function, Lymphoid Tissue Structure and Development, Tissue Morphology
2	ADCY1 , ALOX12, AQP11, BANK1, BRD2 , Ca ²⁺ , CASP3, Ccl2, CREBBP, DHCR24, GPNMB , HFE , HLA-DOB , HRH1, HTRA1, IFNG, IL13, IL20, IL22RA2, IL31RA, JUN, Ms4a4b (includes others), MVK , NMB , PANX1, PDLIM2, PLCE1, PPID, SEC11A , SIRT6, SRP54 , STAT6, SYNGR2, TRIM26 , XIST	18	10	Endocrine System Disorders, Gastrointestinal Disease, Metabolic Disease

Legend: The molecules represented in **bold** are derived from the cross-trait meta-GWAS (Table 1) and post-GWAS analysis (Supplementary Tables). The p-score is calculated by IPA, and estimates, the probability of finding eleven (group 1) or ten (group 2) or more focus molecules in a network of 35 molecules randomly selected from IPA's Global Molecular Network. The p-score = $-\log_{10}$ (p-value); the p-value is calculated by Fisher's exact test.

DISCUSSION

The present study reports two main findings: first, using PGS methodology, we demonstrate that there is an inverse association between genetic loading for SCZ risk variants and long-term therapeutic response to lithium in patients with BPD on the categorical outcome of the ALDA scale. Second, we show in cross-trait meta-GWAS and pathway analyses that genetic variants in the HLA region, the antigen presentation pathway and inflammatory cytokines such as TNF- α , IL-4 and IFN γ could have a biological role in lithium treatment response in BPD.

These findings are consistent with previous clinical and epidemiological studies of lithium response. Lithium is not an effective medication for people suffering from SCZ spectrum disorders^{49,31}. Moreover, lithium may be deleterious for patients with SCZ because of their greater liability to developing lithium-induced neurotoxicity even at modest doses and blood levels^{49,50}. The severity of psychotic symptoms present in bipolar patients was found inversely associated with lithium treatment response⁵¹. Similarly, slow resolution of psychosis in response to lithium treatment during acute manic episodes has been shown to predict poorer overall response to the drug⁵². Amongst patients with BPD, those with a family history of SCZ show poorer response to lithium compared to those with a family history of BPD⁵³. Our findings may provide insight into the genetic architecture underlying these clinical observations.

In the SCZ to lithium response cross-trait GWAS meta-analyses, 15 genetic loci located within protein-coding, genes that appear to have overlapping effects on SCZ risk and response to lithium treatment in BPD were identified. Only one of these genes, type 1

adenylyl cyclase (*ADCY1*), had previously been directly implicated in genetic studies of both SCZ⁵⁴ and lithium treatment response²⁶. It has been shown that *ADCY1* directs neuronal signaling through activation of the extracellular signal-regulated kinases 1 and 2 (ERK1/2) and phosphoinositide 3-kinase (PI3K) pathways⁵⁵. Lithium, in turn, has also been shown to engage the ERK 1/2 pathway and the PI3K pathway, possibly through complex interactions with GSK-3^{56,57}. It is possible that the polymorphisms in the *ADCY1* gene implicated in our study result in altered ERK1/2 and PI3K activation states, thereby interfering with potentially therapeutic lithium effects through these pathways.

Both the most significant finding of the cross-trait GWAS (*HCG4* gene on chromosome 6) and the SNPs from the post-GWAS functional analyses point out to the HLA system in modulating lithium response. Differences in cellular HLA surface protein composition between BPD patients who respond well to lithium and non-responders were first reported over 30 years ago in several studies. These reports noted that leukocyte HLA-A3 antigen reactivity was reported to be associated with poor lithium response, whereas the absence of HLA-A3 predicted a favorable response⁵⁸⁻⁶⁰. At the same time, *in vitro* experiments suggested that lithium binds to HLA antigens on cultured human leukocytes⁶¹. A subsequent *in vivo* study in BPD patients demonstrated that exposure to lithium for about 2 months promoted substantial alterations in the composition of leukocyte HLA proteins⁶².

The genetic association between SCZ and the HLA region on chromosome 6 is the most robust finding of SCZ GWAS to date^{35,63-66}. A functional follow-up analysis demonstrated that HLA SCZ risk variants result in altered expression of Complement Component 4a (C4a) and 4b (C4b) proteins, impacting negatively on neuronal synaptic pruning and thereby resembling neuropathological findings in SCZ⁶⁷. Further, reduced C4a in transgenic mice

resulted in greatly decreased neuronal complement component 3 (C3) expression⁶⁷.

Interestingly, a recent study demonstrated that lithium exposure of human monocytes and mouse microglia *in vitro* resulted in increased expression of C3, which in turn was driven by the inhibition of glycogen synthase kinase-3 (GSK-3)⁶⁸. Inhibition of GSK-3 is to date the most comprehensively documented molecular effect of lithium in neurons, glia, and peripheral immune cells^{69,70}. Taken together, these studies and our findings raise the possibility that lithium's GSK-3-mediated activation of the complement system, via enhanced C3 expression⁶⁸, is suppressed in people with a high genetic loading for SCZ due to functional disturbances of the complement cascade resulting from the SCZ-HLA-C4 association. In this context, it is also compelling that IPA® identified Antigen Presentation as the top canonical pathway characterizing the findings of our cross-trait meta-GWAS analysis. Cellular antigen presentation is mediated by HLA proteins and is closely linked to the functions of the complement system as described above.

Further, functional network analysis of our meta-GWAS findings implicated TNF α , IL-4 and IFN- γ as central functional nodes, suggesting that the negative interaction between lithium response and genetic predisposition for SCZ could be mediated by mechanisms implicating these pro-inflammatory cytokines. Previous studies have reported modulatory effects of lithium treatment on these cytokines in BPD. For example, a study of euthymic patients with BPD reported that TNF α and IL-4 were selectively increased in patients on lithium monotherapy relative to untreated patients and healthy controls⁷¹. Similarly, lithium treatment in BPD patients with a rapid cycling pattern was associated with increased TNF α levels⁷². In a large clinical sample, peripheral TNF α activity was increased in people with SCZ and BPD, and there was evidence that lithium treatment further increased serum levels

in those with BPD⁷³. In contrast, *in vitro* experiments have shown that lithium decreases IFN- γ levels in human blood cultures^{74,75}, while attenuating the differentiation of naïve CD4⁺ T cells into T1 Helper (Th1) cells by IFN- γ following immune challenge⁷⁶. These effects on inflammatory cytokines are, at least in part, driven by GSK-3 inhibition^{77,76,78}. Intriguingly, one study using the ALDA scale reported elevated TNF α levels in patients with poor long-term response to lithium, compared to good responders⁷⁹. In all, these findings underscore the possibility that mechanisms involving pro-inflammatory cytokines might play an important role in mediating therapeutic effects of lithium in patients with BPD⁸⁰. The disturbances of these mechanisms through genetic variants involved in the pathogenesis of SCZ might also perturb lithium's clinical effectiveness. A growing body of evidence describing aberrant inflammatory processes in patients with first episode psychosis⁸¹ and SCZ⁸² supports this idea.

This study has four limitations that are outlined in the Supplementary Materials.

Limitations of the study

Our study has a number of limitations. First, the polygenic load for SCZ accounted for only a modest percentage (~1%) of the observed variation in lithium treatment response in patients with BPD. While this is in line with previous reports on the effects of PGSs on complex clinical phenotypes such as SCZ and BPD⁶⁵, the significance of this finding at clinical- and population-levels needs to be further explored. Encouragingly, previous studies indicate that PGS approaches can assist in characterizing relevant clinical phenotypes. For example, in SCZ, a high polygenic SCZ score has been reported as a measure of disease chronicity⁸³, and is associated with failure to respond to treatment⁸⁴. Second, lithium response in our study was assessed using the ALDA scale, which is a retrospective measure.

In order to substantiate our findings further, prospective studies are required that can measure clinical responses to lithium prospectively. Third, while our strategy for exploring the biological context of our genetic findings can point towards avenues for future research, it is not designed to provide definitive mechanistic answers. Hypothesis-driven experiments are required to follow up on these leads. Fourth, the Ingenuity Pathway Analysis revealed that the enriched pathways were mainly driven by two independent loci (rs209474 and rs144373461/rs142425863). As an example, the top associated "Antigen Presentation Pathway" contains a total of 9 genes of which 6 are implicated by the SNP rs209474 (*HLA-DPB1*, *TAP2*, *HLA-DMA*, *HLA-DMB*, *HLA-DOB*, and *PSMB9*, all genes located at chr6:32,768,557-33,059,376 , hg19) and the other 3 genes (*HLA-A*, *HLA-F*, *HLA-G*, all located at chr6:29,683,619-29,917,908) by the SNPs rs144373461 and rs142425863 which have a chromosomal distance of only 748 bp. This could be due to the high LD structure in the HLA region and also be related to the parameters used to define LD to extract tagSNPs to the meta-GWAS significant SNPs (LD: $r^2 > 0.5$ and within a ± 500 -kb region). The same commonly used parameters were used for all significant findings without a priori stratification according to a chromosomal region.

In conclusion, we demonstrated for the first time that lower SCZ loading is strongly associated with better lithium response in patients with BPD. Follow-up functional analyses point to genes that code for the immune system, including the HLA complex and inflammatory cytokines. For future clinical translation, a high genetic loading for SCZ risk variants could be used in conjunction with clinical parameters to predict the likelihood of non-response to lithium treatment in BPD.

Conflict of interest

All authors declare they have no competing interests

Acknowledgment

The authors are grateful to all patients who participated in the study and we appreciate the contributions of clinicians, scientists, research assistants and study staff who helped in the patient recruitment, data collection and sample preparation of the studies. We are also indebted to the members of the ConLi⁺Gen Scientific Advisory Board (<http://www.conligen.org/>) for critical input over the course of the project.

The analysis of this study was carried out using the high-performance computational capabilities of the University of Adelaide, Phoenix supercomputer (<https://www.adelaide.edu.au/phoenix/>) and Lisa Computer Cluster within the Dutch national e-infrastructure (www.surfsara.nl).

Funding

The primary sources of funding were the Deutsche Forschungsgemeinschaft (DFG; grant no.RI 908/7-1; grant FOR2107, RI 908/11-1 to Marcella Rietschel, NO 246/10-1 to Markus M. Nöthen) and the Intramural Research Program of the National Institute of Mental Health (ZIA-MH00284311; ClinicalTrials.gov identifier: NCT00001174).

The genotyping was in part funded by the German Federal Ministry of Education and Research (BMBF) through the Integrated Network IntegraMent (Integrated Understanding of Causes and Mechanisms in Mental Disorders), under the auspices of the e:Med Programme (grants awarded to Thomas G. Schulze, Marcella Rietschel, and Markus M. Nöthen).

Some data and biomaterials were collected as part of eleven projects (Study 40) that participated in the National Institute of Mental Health (NIMH) Bipolar Disorder Genetics Initiative. From 2003–2007, the Principal Investigators and Co-Investigators were: Indiana University, Indianapolis, IN, R01 MH59545, John Nurnberger, M.D., Ph.D., Marvin J. Miller, M.D., Elizabeth S. Bowman, M.D., N. Leela Rau, M.D., P.Ryan Moe, M.D., Nalini Samavedy, M.D., Rif El-Mallakh, M.D. (at University of Louisville), Husseini Manji, M.D.(at Johnson and Johnson), Debra A.Glitz, M.D.(at Wayne State University), Eric T.Meyer, Ph.D., M.S.(at Oxford University, UK), Carrie Smiley, R.N., Tatiana Foroud, Ph.D., Leah Flury, M.S., Danielle M.Dick, Ph.D (at Virginia Commonwealth University), Howard Edenberg, Ph.D.; Washington University, St. Louis, MO, R01 MH059534, John Rice, Ph.D, Theodore Reich, M.D., Allison Goate, Ph.D., Laura Bierut, M.D.K02 DA21237; Johns Hopkins University, Baltimore, M.D., R01 MH59533, Melvin McInnis, M.D., J.Raymond DePaulo, Jr., M.D., Dean F. MacKinnon, M.D., Francis M. Mondimore, M.D., James B. Potash, M.D., Peter P. Zandi, Ph.D, Dimitrios Avramopoulos, and Jennifer Payne; University of Pennsylvania, PA, R01 MH59553, Wade Berrettini, M.D., Ph.D.; University of California at San Francisco, CA, R01 MH60068, William Byerley, M.D., and Sophia Vinogradov, M.D.; University of Iowa, IA, R01 MH059548, William Coryell, M.D., and Raymond Crowe, M.D.; University of Chicago, IL, R01 MH59535, Elliot Gershon, M.D., Judith Badner, Ph.D., Francis McMahon, M.D., Chunyu Liu, Ph.D., Alan Sanders, M.D., Maria Caserta, Steven Dinwiddie, M.D., Tu Nguyen, Donna Harakal; University of California at San Diego, CA, R01 MH59567, John Kelsoe, M.D., Rebecca McKinney, B.A.; Rush University, IL, R01 MH059556, William Scheftner, M.D., Howard M. Kravitz, D.O., M.P.H., Diana Marta, B.S., Annette Vaughn-Brown, M.S.N., R.N., and Laurie Bederow,

M.A.; NIMH Intramural Research Program, Bethesda, MD, 1Z01MH002810-01, Francis J. McMahon, M.D., Layla Kassem, Psy.D., Sevilla Detera-Wadleigh, Ph.D, Lisa Austin, Ph.D, Dennis L. Murphy, M.D.; Howard University, William B. Lawson, M.D., Ph.D., Evarista Nwulia, M.D., and Maria Hipolito, M.D. This work was supported by the NIH grants P50CA89392 from the National Cancer Institute and 5K02DA021237 from the National Institute of Drug Abuse.

The Canadian part of the study was supported by the Canadian Institutes of Health Research to MA grant #64410 to MA. Collection and phenotyping of the Australian UNSW sample, by Philip B. Mitchell, Peter R. Schofield, Janice M. Fullerton and Adam Wright, was funded by an Australian NHMRC Program Grant (No.1037196). The collection of the Barcelona sample was supported by the Centro de Investigación en Red de Salud Mental (CIBERSAM), IDIBAPS, and the CERCA Programme / Generalitat de Catalunya (grant numbers PI080247, PI1200906, PI12/00018, 2014SGR1636, and 2014SGR398). The Swedish Research Council, the Stockholm County Council, Karolinska Institutet and the Söderström-Königska Foundation supported this research through a grant by Lena Backlund. The collection of the Geneva sample was supported by the Swiss National Foundation (grants Synapsy 51NF40-158776 and 32003B-125469). The collection of the Romanian sample was supported by U.E.F.I.S.C.D.I., Romania, grant awarded to Maria Grigoroiu-Serbanescu.

Web resources

The URLs for data presented herein are as follows:

PGC-Psychiatric Genomics Consortium: schizophrenia, GWAS data,

<http://www.med.unc.edu/pgc/downloads>

Blood eQTL browser: <http://genenetwork.nl/bloodeqtlbrowser>

The Brain eQTL Almanac (Braineac): <http://www.braineac.org/>

The Genotype-Tissue Expression (GTEx): <http://www.gtexportal.org/home/>.

Tools

OB and dLC methods in eLX package:

<https://sites.google.com/site/multivariateyihsianghsu/>.

Reference

1. Merikangas KR, Jin R, He J-P, et al. Prevalence and Correlates of Bipolar Spectrum Disorder in the World Mental Health Survey Initiative. *Archives of general psychiatry*. 2011;68(3):241-251.
2. Merikangas KR, Akiskal HS, Angst J, et al. Lifetime and 12-Month Prevalence of Bipolar Spectrum Disorder in the National Comorbidity Survey Replication. *Archives of general psychiatry*. 2007;64(5):543-552.
3. Ferrari AJ, Stockings E, Khoo JP, et al. The prevalence and burden of bipolar disorder: findings from the Global Burden of Disease Study 2013. *Bipolar disorders*. 2016;18(5):440-450.
4. Chesney E, Goodwin GM, Fazel S. Risks of all-cause and suicide mortality in mental disorders: a meta-review. *World Psychiatry*. 2014;13(2):153-160.
5. Grande I, Berk M, Birmaher B, Vieta E. Bipolar disorder. *Lancet (London, England)*. 2016;387(10027):1561-1572.
6. Smoller JW, Finn CT. Family, twin, and adoption studies of bipolar disorder. *American Journal of Medical Genetics Part C: Seminars in Medical Genetics*. 2003;123C(1):48-58.
7. Weber H, Kittel-Schneider S, Gessner A, et al. Cross-disorder analysis of bipolar risk genes: further evidence of DGKH as a risk gene for bipolar disorder, but also unipolar depression and adult ADHD. *Neuropsychopharmacology*. 2011;36(10):2076-2085.
8. Psychiatric GCBDWG. Large-scale genome-wide association analysis of bipolar disorder identifies a new susceptibility locus near ODZ4. *Nat Genet*. 2011;43(10):977-983.
9. Ikeda M, Takahashi A, Kamatani Y, et al. A genome-wide association study identifies two novel susceptibility loci and trans population polygenicity associated with bipolar disorder. *Mol Psychiatry*. 2017.
10. Mühleisen TW, Leber M, Schulze TG, et al. Genome-wide association study reveals two new risk loci for bipolar disorder. *Nature Communications*. 2014;5:3339.
11. Hou L, Bergen SE, Akula N, et al. Genome-wide association study of 40,000 individuals identifies two novel loci associated with bipolar disorder. *Hum Mol Genet*. 2016;25(15):3383-3394.
12. Cichon S, Mühleisen TW, Degenhardt FA, et al. Genome-wide Association Study Identifies Genetic Variation in Neurocan as a Susceptibility Factor for Bipolar Disorder. *American journal of human genetics*. 2011;88(3):372-381.
13. Cade JF. Lithium salts in the treatment of psychotic excitement. *The Medical journal of Australia*. 1949;2(10):349-352.
14. Miura T, Noma H, Furukawa TA, et al. Comparative efficacy and tolerability of pharmacological treatments in the maintenance treatment of bipolar disorder: a systematic review and network meta-analysis. *Lancet Psychiatry*. 2014;1(5):351-359.
15. Malhi GS, Tanious M, Das P, Berk M. The science and practice of lithium therapy. *The Australian and New Zealand journal of psychiatry*. 2012;46(3):192-211.
16. Malhi GS, Adams D, Berk M. Is lithium in a class of its own? A brief profile of its clinical use. *The Australian and New Zealand journal of psychiatry*. 2009;43(12):1096-1104.
17. Tondo L, Hennen J, Baldessarini RJ. Lower suicide risk with long-term lithium treatment in major affective illness: a meta-analysis. *Acta Psychiatr Scand*. 2001;104(3):163-172.

18. NICE. *Bipolar Disorder: The Management of Bipolar Disorder in Adults, Children and Adolescents, in Primary and Secondary Care*. Leicester (UK)2006.
19. Yatham LN, Kennedy SH, Parikh SV, et al. Canadian Network for Mood and Anxiety Treatments (CANMAT) and International Society for Bipolar Disorders (ISBD) collaborative update of CANMAT guidelines for the management of patients with bipolar disorder: update 2013. *Bipolar disorders*. 2013;15(1):1-44.
20. Malhi GS, Bassett D, Boyce P, et al. Royal Australian and New Zealand College of Psychiatrists clinical practice guidelines for mood disorders. *Aust N Z J Psychiatry*. 2015;49(12):1087-1206.
21. Goodwin GM, Haddad PM, Ferrier IN, et al. Evidence-based guidelines for treating bipolar disorder: Revised third edition recommendations from the British Association for Psychopharmacology. *J Psychopharmacol*. 2016;30(6):495-553.
22. Hou L, Heilbronner U, Degenhardt F, et al. Genetic variants associated with response to lithium treatment in bipolar disorder: a genome-wide association study. *The Lancet*. 2016;387(10023):1085-1093.
23. Kleindienst N, Engel RR, Greil W. Psychosocial and demographic factors associated with response to prophylactic lithium: a systematic review for bipolar disorders. *Psychological medicine*. 2005;35(12):1685-1694.
24. Grof P, Duffy A, Cavazzoni P, et al. Is response to prophylactic lithium a familial trait? *The Journal of clinical psychiatry*. 2002;63(10):942-947.
25. Higgins GA, Allyn-Feuer A, Barbour E, Athey BD. A glutamatergic network mediates lithium response in bipolar disorder as defined by epigenome pathway analysis. *Pharmacogenomics*. 2015;16(14):1547-1563.
26. Song J, Bergen SE, Di Florio A, et al. Genome-wide association study identifies SESTD1 as a novel risk gene for lithium-responsive bipolar disorder. *Molecular psychiatry*. 2016;21(9):1290-1297.
27. Cross-Disorder Group of the Psychiatric Genomics C. Genetic relationship between five psychiatric disorders estimated from genome-wide SNPs. *Nat Genet*. 2013;45(9):984-994.
28. Forstner AJ, Hecker J, Hofmann A, et al. Identification of shared risk loci and pathways for bipolar disorder and schizophrenia. *PloS one*. 2017;12(2):e0171595.
29. Identification of risk loci with shared effects on five major psychiatric disorders: a genome-wide analysis. *Lancet (London, England)*. 2013;381(9875):1371-1379.
30. Focking M, Dicker P, English JA, Schubert KO, Dunn MJ, Cotter DR. Common proteomic changes in the hippocampus in schizophrenia and bipolar disorder and particular evidence for involvement of cornu ammonis regions 2 and 3. *Arch Gen Psychiatry*. 2011;68(5):477-488.
31. Leucht S, Helfer B, Dold M, Kissling W, McGrath JJ. Lithium for schizophrenia. *The Cochrane database of systematic reviews*. 2015(10):Cd003834.
32. Grof P, Alda M, Grof E, Zvolsky P, Walsh M. Lithium response and genetics of affective disorders. *Journal of affective disorders*. 1994;32(2):85-95.
33. Pearlson GD. Etiologic, phenomenologic, and endophenotypic overlap of schizophrenia and bipolar disorder. *Annu Rev Clin Psychol*. 2015;11:251-281.
34. Sachs GS, Peters AT, Sylvia L, Grunze H. Polypharmacy and bipolar disorder: what's personality got to do with it? *Int J Neuropsychopharmacol*. 2014;17(7):1053-1061.

35. Schizophrenia Working Group of the Psychiatric Genomics C. Biological insights from 108 schizophrenia-associated genetic loci. *Nature*. 2014;511(7510):421-427.
36. Schulze TG, Alda M, Adli M, et al. The International Consortium on Lithium Genetics (ConLiGen): An Initiative by the NIMH and IGSLI to Study the Genetic Basis of Response to Lithium Treatment. *Neuropsychobiology*. 2010;62(1):72-78.
37. Purcell S, Neale B, Todd-Brown K, et al. PLINK: a tool set for whole-genome association and population-based linkage analyses. *American journal of human genetics*. 2007;81(3):559-575.
38. Das S, Forer L, Schonherr S, et al. Next-generation genotype imputation service and methods. *Nature genetics*. 2016;48(10):1284-1287.
39. Purcell SM, Wray NR, Stone JL, et al. Common polygenic variation contributes to risk of schizophrenia and bipolar disorder. *Nature*. 2009;460(7256):748-752.
40. Duffy A, Alda M, Milin R, Grof P. A consecutive series of treated affected offspring of parents with bipolar disorder: is response associated with the clinical profile? *Can J Psychiatry*. 2007;52(6):369-376.
41. Garnham J, Munro A, Slaney C, et al. Prophylactic treatment response in bipolar disorder: results of a naturalistic observation study. *J Affect Disord*. 2007;104(1-3):185-190.
42. Manchia M, Adli M, Akula N, et al. Assessment of Response to Lithium Maintenance Treatment in Bipolar Disorder: A Consortium on Lithium Genetics (ConLiGen) Report. *PloS one*. 2013;8(6):e65636.
43. Yang Q, Wu H, Guo CY, Fox CS. Analyze multivariate phenotypes in genetic association studies by combining univariate association tests. *Genet Epidemiol*. 2010;34(5):444-454.
44. Yang Q, Wang Y. Methods for Analyzing Multivariate Phenotypes in Genetic Association Studies. *J Probab Stat*. 2012;2012:652569.
45. The Genomes Project C. A global reference for human genetic variation. *Nature*. 2015;526(7571):68-74.
46. Westra H-J, Peters MJ, Esko T, et al. Systematic identification of trans eQTLs as putative drivers of known disease associations. *Nature genetics*. 2013;45(10):1238-1243.
47. Ramasamy A, Trabzuni D, Guelfi S, et al. Genetic variability in the regulation of gene expression in ten regions of the human brain. *Nature neuroscience*. 2014;17(10):1418-1428.
48. Benjamini Y, Hochberg Y. Controlling the False Discovery Rate: A Practical and Powerful Approach to Multiple Testing. *Journal of the Royal Statistical Society. Series B (Methodological)*. 1995;57(1):289-300.
49. Prien RJ. Lithium in the treatment of schizophrenia and schizoaffective disorders. *Archives of General Psychiatry*. 1979;36(8):852-853.
50. Shopsin B, Kim SS, Gershon S. A Controlled Study of Lithium vs. Chlorpromazine in Acute Schizophrenics. *The British Journal of Psychiatry*. 1971;119(551):435.
51. Silva LFdALe, Loureiro JC, Franco SCR, et al. Assessing treatment response to prophylactic lithium use in patients with bipolar disorder. *Jornal Brasileiro de Psiquiatria*. 2016;65:9-16.
52. de Sousa RT, Busnello JV, Forlenza OV, et al. Early improvement of psychotic symptoms with lithium monotherapy as a predictor of later response in mania. *Journal of psychiatric research*. 2012;46(12):1564-1568.

53. Alda M. LITHIUM IN THE TREATMENT OF BIPOLAR DISORDER: PHARMACOLOGY AND PHARMACOGENETICS. *Molecular psychiatry*. 2015;20(6):661-670.
54. Goes FS, McGrath J, Avramopoulos D, et al. Genome-wide association study of schizophrenia in Ashkenazi Jews. *Am J Med Genet B Neuropsychiatr Genet*. 2015;168(8):649-659.
55. Sethna F, Feng W, Ding Q, Robison AJ, Feng Y, Wang H. Enhanced expression of ADCY1 underlies aberrant neuronal signalling and behaviour in a syndromic autism model. *Nat Commun*. 2017;8:14359.
56. McCarthy MJ, Wei H, Landgraf D, Le Roux MJ, Welsh DK. Disinhibition of the extracellular-signal-regulated kinase restores the amplification of circadian rhythms by lithium in cells from bipolar disorder patients. *Eur Neuropsychopharmacol*. 2016;26(8):1310-1319.
57. Tian N, Kanno T, Jin Y, Nishizaki T. Lithium potentiates GSK-3beta activity by inhibiting phosphoinositide 3-kinase-mediated Akt phosphorylation. *Biochem Biophys Res Commun*. 2014;450(1):746-749.
58. Del Vecchio M, Farzati B, Maj M, Minucci P, Guida L, Kemali D. Cell membrane predictors of response to lithium prophylaxis of affective disorders. *Neuropsychobiology*. 1981;7(5):243-247.
59. Maj M, Del Vecchio M, Starace F, Pirozzi R, Kemali D. Prediction of affective psychoses response to lithium prophylaxis. The role of socio-demographic, clinical, psychological and biological variables. *Acta Psychiatr Scand*. 1984;69(1):37-44.
60. Perris C, Strandman E, Wahlby L. HL-A antigens and the response to prophylactic lithium. *Neuropsychobiology*. 1979;5(2):114-118.
61. Majsky A, Dvorakova M, Zvolisky P. Binding of lithium and neuroleptics on lymphocyte HLA antigens in vitro. *Folia Haematol Int Mag Klin Morphol Blutforsch*. 1980;107(1):74-80.
62. Kang BJ, Park SW, Chung TH. Can the expression of histocompatibility antigen be changed by lithium? *Bipolar disorders*. 2000;2(2):140-144.
63. Shi J, Levinson DF, Duan J, et al. Common variants on chromosome 6p22.1 are associated with schizophrenia. *Nature*. 2009;460(7256):753-757.
64. Stefansson H, Ophoff RA, Steinberg S, et al. Common variants conferring risk of schizophrenia. *Nature*. 2009;460(7256):744-747.
65. International Schizophrenia C. Common polygenic variation contributes to risk of schizophrenia that overlaps with bipolar disorder. *Nature*. 2009;460(7256):748-752.
66. Schizophrenia Psychiatric Genome-Wide Association Study C. Genome-wide association study identifies five new schizophrenia loci. *Nature genetics*. 2011;43(10):969-976.
67. Sekar A, Bialas AR, de Rivera H, et al. Schizophrenia risk from complex variation of complement component 4. *Nature*. 2016;530(7589):177-183.
68. Yu Z, Ono C, Aiba S, et al. Therapeutic concentration of lithium stimulates complement C3 production in dendritic cells and microglia via GSK-3 inhibition. *Glia*. 2015;63(2):257-270.
69. Li X, Bijur GN, Jope RS. Glycogen synthase kinase-3beta, mood stabilizers, and neuroprotection. *Bipolar Disord*. 2002;4(2):137-144.

70. Martin M, Rehani K, Jope RS, Michalek SM. Toll-like receptor-mediated cytokine production is differentially regulated by glycogen synthase kinase 3. *Nat Immunol.* 2005;6(8):777-784.
71. Guloksuz S, Cetin EA, Cetin T, Deniz G, Oral ET, Nutt DJ. Cytokine levels in euthymic bipolar patients. *J Affect Disord.* 2010;126(3):458-462.
72. Himmerich H, Koethe D, Schuld A, Yassouridis A, Pollmacher T. Plasma levels of leptin and endogenous immune modulators during treatment with carbamazepine or lithium. *Psychopharmacology (Berl).* 2005;179(2):447-451.
73. Hoseth EZ, Ueland T, Dieset I, et al. A Study of TNF Pathway Activation in Schizophrenia and Bipolar Disorder in Plasma and Brain Tissue. *Schizophr Bull.* 2017.
74. Rapaport MH, Manji HK. The effects of lithium on ex vivo cytokine production. *Biological psychiatry.* 2001;50(3):217-224.
75. Boufidou F, Nikolaou C, Alevizos B, Liappas IA, Christodoulou GN. Cytokine production in bipolar affective disorder patients under lithium treatment. *J Affect Disord.* 2004;82(2):309-313.
76. Rowse AL, Naves R, Cashman KS, et al. Lithium controls central nervous system autoimmunity through modulation of IFN-gamma signaling. *PloS one.* 2012;7(12):e52658.
77. Giambelluca MS, Bertheau-Mailhot G, Laflamme C, Rollet-Labelle E, Servant MJ, Pouliot M. TNF-alpha expression in neutrophils and its regulation by glycogen synthase kinase-3: a potentiating role for lithium. *FASEB J.* 2014;28(8):3679-3690.
78. Petersein C, Sack U, Mergl R, et al. Impact of lithium alone and in combination with antidepressants on cytokine production in vitro. *J Neural Transm (Vienna).* 2015;122(1):109-122.
79. Guloksuz S, Altinbas K, Aktas Cetin E, et al. Evidence for an association between tumor necrosis factor-alpha levels and lithium response. *J Affect Disord.* 2012;143(1-3):148-152.
80. Rosenblat JD, McIntyre RS. Bipolar Disorder and Inflammation. *Psychiatr Clin North Am.* 2016;39(1):125-137.
81. Uptegrove R, Manzanares-Teson N, Barnes NM. Cytokine function in medication-naive first episode psychosis: a systematic review and meta-analysis. *Schizophr Res.* 2014;155(1-3):101-108.
82. Muller N, Weidinger E, Leitner B, Schwarz MJ. The role of inflammation in schizophrenia. *Front Neurosci.* 2015;9:372.
83. Meier SM, Agerbo E, Maier R, et al. High loading of polygenic risk in cases with chronic schizophrenia. *Mol Psychiatry.* 2016;21(7):969-974.
84. Frank J, Lang M, Witt SH, et al. Identification of increased genetic risk scores for schizophrenia in treatment-resistant patients. *Molecular psychiatry.* 2015;20(2):150-151.