

# Limited plasticity of *Drosophila suzukii* wing spot size in response to developmental temperature

Ceferino Varón-González<sup>1</sup>, Antoine Fraimout<sup>1, 2</sup>, Vincent Debat<sup>1</sup>

<sup>1</sup>Institut de Systématique, Evolution, Biodiversité (ISYEB), Muséum National d'Histoire Naturelle, CNRS, Sorbonne Université, EPHE, Université des Antilles, 57 rue Cuvier, CP 50, 75005 Paris, France

<sup>2</sup>Current affiliation: Ecological Genetics Research Unit, Organismal and Evolutionary Biology Research Programme, Faculty of Biology and Environmental Sciences, Biocenter 3, Viikinkaari 1, FIN-0014, University of Helsinki, Finland.

## Contact information:

Ceferino Varón González, Institut de Systématique, Evolution, Biodiversité (ISYEB), Muséum National d'Histoire Naturelle, CNRS, Sorbonne Université, EPHE, Université des Antilles, 57 rue Cuvier, CP 50, 75005 Paris, France. Email : ceferino.vg@gmail.com

## ABSTRACT:

Phenotypic plasticity is an important mechanism allowing adaptation to new environments and as such it has been suggested to facilitate biological invasions. Under this assumption, invasive populations are predicted to exhibit stronger plastic responses than native populations. *Drosophila suzukii* is an invasive species whose males harbor a spot on the wing tip. In this study, by manipulating developmental temperature, we compare the phenotypic plasticity of wing spot size of two invasive populations with that of a native population. We then compare the results with data obtained from wild-caught flies from different natural populations. While both wing size and spot size are plastic to temperature, no difference in plasticity was detected between native and invasive populations, rejecting the hypothesis of a special role of thermal plasticity in the invasion success. In contrast we observed a remarkable stability in the spot-to-wing ratio across temperatures, as well as among geographic populations. This stability suggests either that the spot relative size is under stabilizing selection, or that its variation might be constrained by a tight developmental correlation between spot size and wing size. Our data show that this correlation was lost at high temperature, leading to an increased variation in the relative spot size, particularly marked in the two invasive populations. This suggests (i) that *D. suzukii*'s development is impaired by hot temperatures, in agreement with the cold-adapted status of this species; (ii) that the spot size can be decoupled from wing size, rejecting the hypothesis of an absolute constraint and suggesting that the wing color pattern might be under stabilizing (sexual) selection; (iii) that such sexual selection might be relaxed in the invasive populations. Finally, a subtle but consistent directional asymmetry in spot size was detected in favor of the right side in all populations and temperatures, possibly indicative of a lateralized sexual behavior.

**Keywords:** melanization, wing, spot, plasticity, directional asymmetry, temperature, *Drosophila suzukii*

## Introduction

Phenotypic plasticity often plays an important role in the adaptation to new environments (Lande, 2015; West-Eberhard, 1989). In particular, it has been repeatedly suggested to facilitate invasions (Chown Steven L et al., 2007; Gibert et al., 2016; Richards et al., 2006), as genetic variation tends to be limited during the first stages of colonization (Geng et al., 2007; Geng et al., 2016). However, this possibility has received little empirical support so far (Arnold et al., 2019; Fox Rebecca J. et al., 2019). Invasions provide a particularly favorable context for the study of the evolutionary role of plasticity as we can compare derived populations repeatedly confronted to new environments with populations from the native range, arguably closer from the ancestral state. Differences in reaction norms are expected across populations (Pigliucci, 2005): native populations being predicted to be overall less plastic than invasive populations (Davidson et al., 2011; Lande, 2015; Lee and Gelembiuk, 2008; Richards et al., 2006; Yeh and Price, 2004).

Biological invasions are processes in which an increasing number of individuals from a population colonize one environment where no representative of that population was present. The population effective size fluctuates in the new habitat and the population phenotype may change during invasions (Travis et al., 2009), as natural selection (in a different environment) would gain importance relative to drift. The limited population size during colonization may increase the importance of genetic drift and decrease selection on sexual traits (Candolin and Heuschele, 2008; Lahti et al., 2009). Such relaxed sexual selection might in turn be associated with an increased variability of such traits (Marshall et al., 2008), and in particular an increased plasticity (Price, 2006).

*Drosophila suzukii* has recently colonized all continents in a wide and fast dispersion all over the world (Fraimout et al., 2017). This species is a particularly suitable model to investigate the role of plasticity in the success of an invasion. Remarkably, *D. suzukii* males present a dark spot on the wing, as in several other *Drosophila* species (Kopp and True 2002). A precise understanding of the effect of this spot on mating success is lacking (Fuyama, 1979; Roy and Gleason, 2019), but the particular courtship behavior (the male confront the female showing her his dorsal wing area) consistently associated with the presence of a spot in males across species, suggests an important role in sexual selection (Kopp and True, 2002).

The effect of sexual selection on phenotypic plasticity is controversial (Greenfield and Rodriguez, 2004; Møller and Alatalo, 1999; Rowe and Houle, 1996). Although sexually selected traits are often considered to be plastic (Price, 2006), an increased robustness might evolve through stabilizing or directional selection (see Fierst (2013) for a theoretical treatment, and Nieberding et al. (2018) for a case study in *B. anynana*). Stabilizing selection would limit variation around the values preferred by females (Mead and Arnold, 2004), while directional selection would limit variation on one side of the distribution due to female preferences and on the other side due to developmental or physiological constraints (Wiernasz, 1989). We reasoned that *D. sukii*'s spot might be more plastic, or at least less canalized and thus more variable in the invasive populations compared to native populations, owing to a hypothetical reduced choosiness in females – and thus reduced sexual selection – possibly advantageous in small, peripheral populations (Bleu et al., 2012).

Here we quantify the phenotypic variation of the wing spot size in several natural populations of *Drosophila sukii* and assess its plasticity to temperature using samples from three geographic populations reared in the lab. Temperature is one of the main environmental drivers of life history and morphological evolution of drosophilids in particular and ectotherms in general (Atkinson, 1994; Crill et al., 1996; David et al., 1997; Gibert et al., 1996; Gibert et al., 2007) and the thermal plastic responses in *Drosophila sukii* is receiving much attention (Clemente et al., 2018; Fraimout et al., 2018; Shearer et al., 2016). We test (1) whether natural populations present different spot sizes, and whether this differentiation correlates with local temperature at the time of capture, as would be expected for a plastic effect; (2) whether invasive and native populations display different plasticities to temperature; and (3) whether spot size is less canalized (more variable) in invasive populations. A higher plasticity of the spot in invasive populations is expected if plasticity plays a role in the invasion success. Combined with a reduced canalization, it might also indicate that sexual selection is relaxed in the invasive populations.

## Materials and Methods

### Samples

Natural populations were sampled in 2014 and 2016 in 13 localities worldwide (see table 1) with baited traps and net sweeping, and conserved in ethanol in the dark (Fraimout et al., 2017). The number of

individuals per locality ranged from 13 to 50 (Table 1). Sample sizes correspond to samples and pictures originally collected to run morphometric analyses.

**Table 1**

**Natural populations sample sizes**

Collection place	Country	Date (M/Y)	Data place	Temp (°C)	Number of wings	Complete individuals
Barcelona	Spain	07/2014	Barcelona	24.1	49	18
Porto Alegre	Brazil	05/2014	Porto Alegre	16.8	21	7
Geneva	USA	05/2014	Geneva	16.7	30	15
Trento	Italy	09/2014	Paganella	7.3	25	11
Langfang	China	08/2014	Beijing	26.3	30	15
Liaoyuan	China	04/2014	Shenyang	24.2	30	12
Sapporo	Japon	07/2014	Sapporo	22.5	41	16
Shiping	China	05/2014	Mengzi	23.0	28	13
Dayton	USA	10/2014	Portland	15.6	48	20
Tokyo	Japon	07/2014	Tokyo	26.8	13	3
Watsonville	USA	10/2014	Fresno	22.2	38	15
Madison	USA	10/2016	Madison	12.1	25	11
Paris	France	10/2016	Paris	10.9	50	22

Note: The first three columns represent the nearest city, country and date of the flies collection. Then, the closest city to the collection place and its temperature during the month of the collection are represented. Finally, the table recalls the total sample size (wings) and the number of complete individuals (pairs of wings from the same individual).

Laboratory samples were established from three populations sampled in summer 2014 with banana bait traps and net swiping: one in the native area (Sapporo, Japan), and two in the invasion range, in Paris (France) and Dayton (Oregon, USA). Ten isofemale lines per population were obtained from single matings performed in separate vials (David et al., 1997). Populations were kept at 22°C on a medium with cornstarch and yeast with hydroxyl-4 benzoate. Before the temperature treatment flies were transferred to oviposit in two batches during one day. The individuals from these two batches were then separately placed in incubators at 16, 22 and 28°C. Lines were randomly placed in the incubators and kept at the experimental temperatures for two days after emergence. Between seven and 14 individuals per line were obtained (Table 2). We mounted wings on slides in a mixture of ethanol and glycerin and then we sealed the coverslips with nail polish and small weights to keep the wings as flat as possible. Images were taken with a Leica DFC 420 digital camera mounted on a Leica Z6 APO microscope controlling for the scale.

**Table 2**

Lab populations sample sizes

Geographic origin	Temperature (°C)	Number of wings	Complete individuals
Paris	16	15	7
	22	27	12
	28	28	13
Sapporo	16	25	12
	22	26	12
	28	31	15
Dayton	16	22	10
	22	26	11
	28	31	14

Note: The first two columns show the geographic origin of each population (first) and the temperature set during their development *in-vitro* (second). Then, the total number of wings used to analyze overall variation and the number of complete individuals used to analyze asymmetric variation.

# *Phenotypic data*

Two phenotypic traits were directly inferred from the pictures: wing size and spot size (Figure 1). Because the potential visual effect of the wing spot during courtship may be associated to the proportion of the wing occupied by the spot and not its absolute size, we also estimated the relative spot size as the ratio between spot size and wing size for each individual.

In order to remove the proximal part of the wing, which is usually deteriorated during the removal of the wing from the thorax and may bias wing-size estimates, two landmarks were placed in ImageJ 1.51j8 (Rasband, 2012), that correspond to landmarks 1 and 3 in Fraimout et al. (2018) and a line between them was traced to discard all the proximal part of the wing. Then, a semi-automatized script in Python 3.6.1 was written to extract the wing and spot contours. Their respective areas were estimated by the Green's theorem in the function `contourArea` of the OpenCV library (Bradski and Kaehler, 2000).



**Figure 1:** *Drosophila suzukii* wing from a population of Sapporo (Japan, native population) raised at 28°. In blue there is the wing and spot areas identified by our Python algorithm.

Our script was based on the manual adjustment of the picture color contrast. Because the color difference between the wing and the background is sharp, the wing outline was easily and

robustly extracted. To the contrary, because the limits of the spot are fuzzy, a subtle difference in the image contrast can induce a relatively large difference in the spot outline. The manual adjustment of the picture contrast might thus be an important source of measurement error, particularly so for the spot size. We thus repeated the estimation of the wing and spot sizes in all the pictures and measurement error was quantified using an ANOVA for each population, assessing individual variation and measurement residuals.

### *Statistical analyses*

**Natural populations** - We applied a linear model to assess the relationship between absolute spot size and wing size, differences among natural populations on the spot size and whether there is natural variation in the spot-wing relationship (i. e. spot size ~ wing size + population + wing size x population). To have an estimate of natural variation for the other two phenotypic traits, we also assessed with one-way ANOVAs the differences among natural populations for wing size and the ratio. To explore the potential effect of temperature on those wild samples, we collected the average temperature during the month of collection in these places from the National Oceanic and Atmospheric Administration database ([www.ncdc.noaa.gov/IPSP/mcdw/mcdw.html](http://www.ncdc.noaa.gov/IPSP/mcdw/mcdw.html)) (Table 1) and ran a linear regression for each trait with temperature as a factor.

**Experimental samples** - We inferred the effect of temperature and geographic factors on each phenotypic trait with two-way ANOVAs (phenotype ~ temperature + population + temperature x population). The interaction temperature x population was used to assess the difference in plasticity among populations. We also ran a regression to test the effect of wing size on the absolute spot size, so that we can experimentally develop a null hypothesis about the relationship between wing and spot sizes that can be compared later with the results from natural populations. Because temperature, wing size and spot size are correlated (see results), we did not include two of these factors as explanatory variables in the same statistical model to avoid collinearity problems. This is the simplest approach that allows us to explore the unique contributions of temperature and wing variation to spot variation (Graham, 2003). The effect of temperature on the relationship between wing size and spot size was assessed by estimating only the effect of the interaction wing size x temperature on spot size in one



ANCOVA. Differences in the slope of the relationship spot size-wing size among temperatures with three pairwise t-test.

Differences in variance might reflect differences in the developmental channeling of environmental variation (Debat and David, 2001; Debat et al., 2009). In general, stressful environmental conditions have been suggested to alter developmental stability, leading to an increase in variance among individuals and asymmetry (Graham et al. 1998).

Among individual variation was measured as the coefficient of variation (CV) to account for a potential scaling effect on variation, and compared among temperatures within each geographic population. The significance of the differences was tested using a modified signed-likelihood ratio (MSLR) test for equality of coefficients of variation (Krishnamoorthy and Lee, 2014).

To explore the hypothesis that temperature affects asymmetry, we measured the difference between right and left values for each of the three phenotypic traits (Table 1). Then, a two-way mixed model ANOVA was applied to each trait (Palmer and Strobeck, 1986; Palmer 1994). “Individual” was entered the model as a random effect, and tested for the variation among individuals; “side” was treated as a fixed effect, and tested for a systematic deviation from perfect symmetry (directional asymmetry, DA); the interaction “side x individual” tested for the significance of non-DA relative to measurement error (Fluctuating asymmetry, FA). The replicated measurements were included in the error term. Once the presence or absence of significant DA and FA were assessed in each particular group, we assessed the effect of temperature and geography on these two traits with an ANOVA (effect on DA). Differences in the slope of the relationship temperature-ratio asymmetry among populations with three pairwise t-test. Finally, Levene’s tests were applied on the asymmetry measures to assess FA.

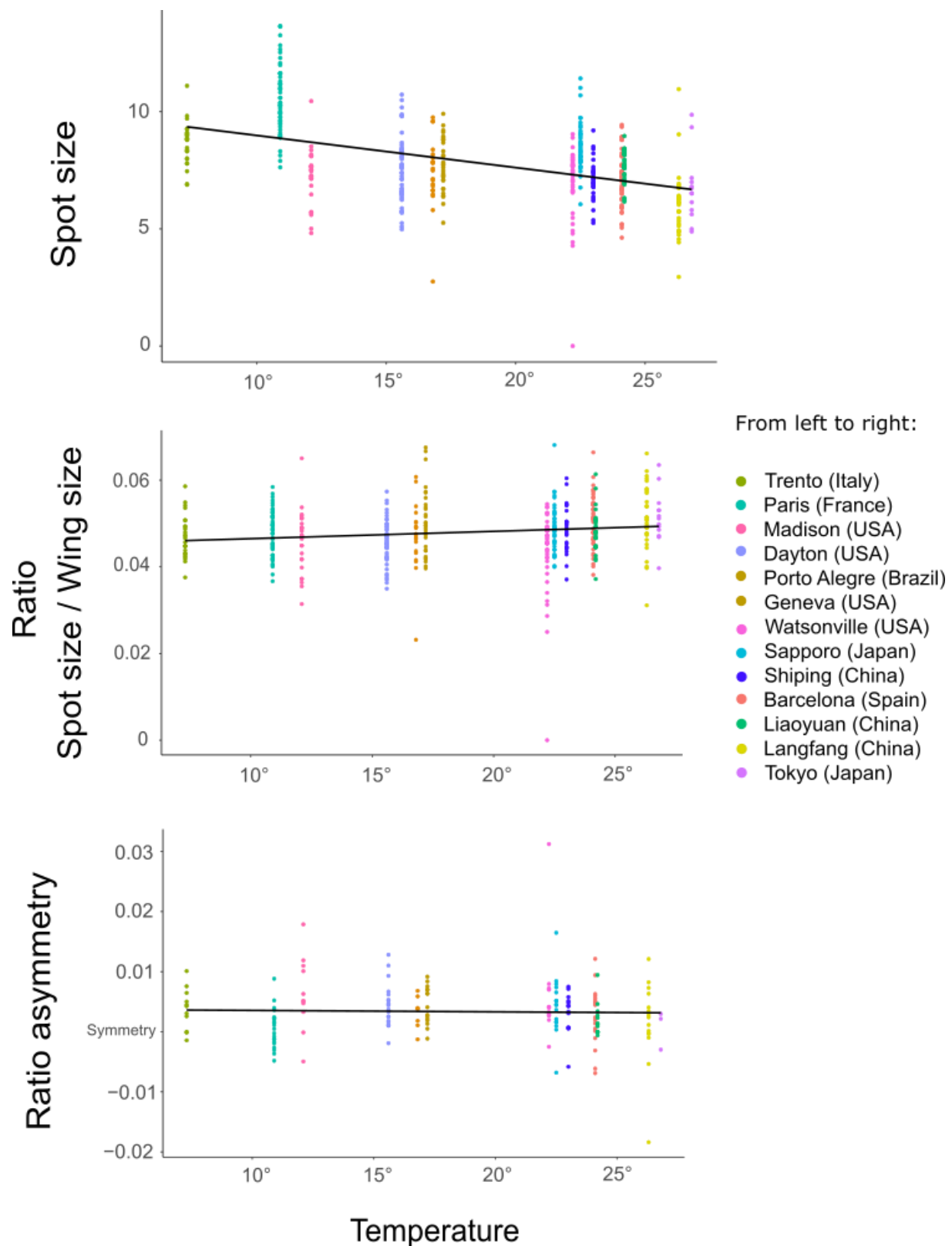
As effect sizes, Cohen’s  $d$  for differences among geographic populations and  $r^2$  for temperature effects were reported due to their simplicity (Rosenthal et al., 1994). All data, scripts and figures can be found in Dryad and Github.

## Results

### *Natural populations*

In natural populations, we found differences among populations for the spot size (ANOVA:  $F_{12, 401} = 3.756$ ,  $p < 0.001$ ) as well as for the wing (ANOVA:  $F_{12, 414} = 73.8$ ,  $p < 0.001$ ) and the ratio (ANOVA:  $F_{12, 401} = 4.645$ ,  $p < 0.001$ ). The latter showed a remarkable stability in comparison to the wing and the absolute spot size ( $r^2_{RATIO} = 0.12$ ,  $r^2_{SPOT} = 0.48$ ,  $r^2_{WING\_POP} = 0.68$ ).

Our linear model (spot size ~ wing size + population + wing size x population) also showed an association between spot size and wing size in pooled samples ( $r^2 = 0.63$ ,  $F_{1, 401} = 783.917$ ,  $p < 0.001$ ) (Figure 2). Whether the relationship between spot size and wing size depends on the population is not conclusive ( $r^2 = 0.66$ , ANOVA:  $F_{12, 401} = 1.800$ ,  $p = 0.046$ ). We detected an effect of temperature on the three phenotypic traits (Figure 2), but much weaker for the ratio (wing size:  $r^2 = 0.38$ ,  $F_{1, 425} = 255.9$ ,  $p < 0.001$ ; spot size:  $r^2 = 0.21$ ,  $F_{1, 425} = 115.2$ ,  $p < 0.001$ ; ratio:  $r^2 = 0.02$ ,  $F_{1, 425} = 9.079$ ,  $p = 0.003$ ).



**Figure 2 :** Relationship between spot variation in natural populations and temperature. Association between spot size and temperature (top), between the ratio and temperature (middle) and the ratio asymmetry and temperature (bottom).

230

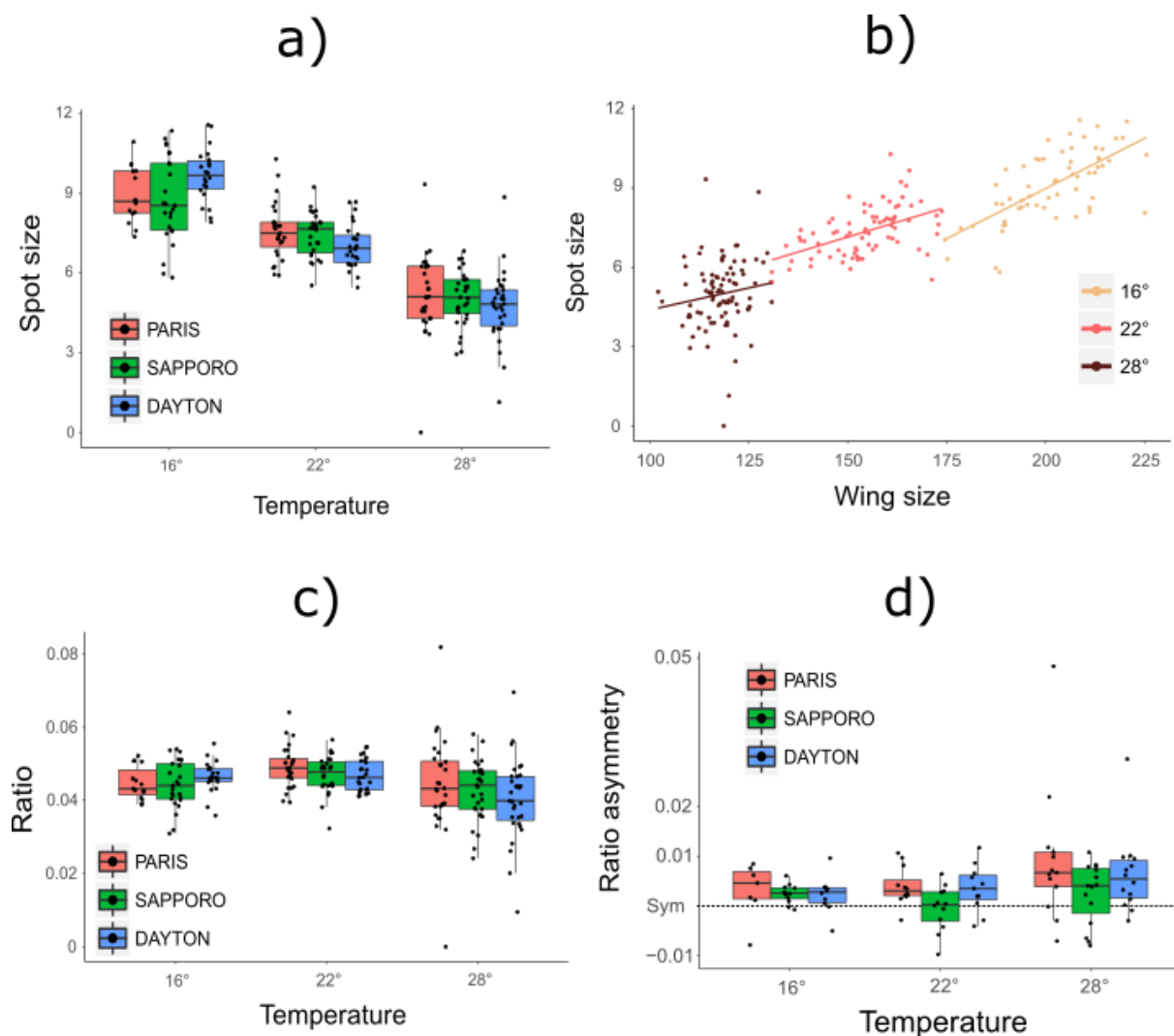
## 231 *Experimental samples*

232 Both wing size and spot size strongly decreased with temperature ( $r^2_{WING\_TEMP} = 0.93$ ,  $F_{2, 222} =$   
 233 1672.089,  $p < 0.001$ ;  $r^2_{SPOT\_TEMP} = 0.64$ ,  $F_{2, 222} = 227.086$ ,  $p < 0.001$ ) (Figure 3) and both traits are  
 234 associated ( $r^2 = 0.71$ ,  $t = 23.482$ ,  $p < 0.001$ ) (Figure 3). The ratio exhibited much less variation with  
 235 temperature ( $r^2 = 0.07$ ,  $F_{2, 222} = 9.040$ ,  $p < 0.001$ ), the values at 22°C being slightly larger and driving  
 236 the significance (no difference between 16 and 28°C was detected:  $F_{1, 146} = 3.279$ ,  $p = 0.072$ ).

237 Overall, the three traits exhibited very similar reaction norms across populations (figure 3a and  
 238 3c). A slight difference was nevertheless detected for wing size plasticity (interaction temperature x  
 239 population significant:  $F_{4, 222} = 8.664$ ,  $p < 0.001$ ), the Sapporo population being slightly less responsive  
 240 to temperature ( $r^2_{SAPPORO} = 0.93$ ,  $r^2_{PARIS} = 0.94$ ,  $r^2_{DAYTON} = 0.95$ ). Similarly, wing spot plasticity was also  
 241 slightly different among populations ( $r^2 = 0.68$ ,  $F_{4, 222} = 2.888$ ,  $p = 0.023$ ), the US population (Dayton)  
 242 being the most plastic and the French one (Paris) the least ( $r^2_{SAPPORO} = 0.64$ ,  $r^2_{PARIS} = 0.58$ ,  $r^2_{DAYTON} =$   
 243 0.77). No difference in plasticity among populations was found for the ratio ( $F_{4, 222} = 0.887$ ,  $p = 0.472$ ).

244 Interestingly, the relationship between absolute spot size and wing size was dependent on  
 245 temperature ( $r^2 = 0.72$ ,  $F_{3, 227} = 197.4$ ,  $p < 0.001$ ): the lower the temperature, the higher the slope of  
 246 the regression and the tighter the association ( $r^2_{16^\circ} = 0.45$ ,  $r^2_{22^\circ} = 0.25$ ,  $r^2_{28^\circ} = 0.02$ ) (Figure 3b). A  
 247 comparison between the slopes at 16°C and 22°C showed a significant difference ( $t_{1, 137} = -2.177$ ,  $p =$   
 248 0.031). The relationship between absolute spot size and wing size at 28°C was not even significant  
 249 ( $t_{1,88} = 1.347$ ,  $p = 0.182$ ) and no significant difference was found between slopes at 28°C and either  
 250 16°C ( $t_{1,148} = -1.585$ ,  $p = 0.115$ ) or 22°C ( $t_{1,165} = -0.458$ ,  $p = 0.647$ ).

251



**Figure 3 :** Spot size variation in relation to temperature and wing size. a) linear regression showing the influence of developmental temperature on spot size variation, b) effect of temperature on the relationship spot size – wing size, c) differences in the ratio for each population among temperatures, d) differences in ratio asymmetry for each population among temperatures.

Within temperature variation tended to be higher at 28°C for both the spot size and the ratio. For absolute spot size, variation was consistently higher at 28°C in comparison to 22°C in all three geographic populations: Sapporo (Table 3, MSLRT = 8.03,  $p = 0.005$ ), Dayton (Table 3, MSLRT = 15.40,  $p < 0.001$ ) and Paris (Table 3, MSLRT = 12.25,  $p < 0.001$ ). At 16°C, the other extreme temperature, Sapporo population also showed increased variation in the spot size (Table 3, MSLRT = 5.25,  $p = 0.022$ ) but Paris (Table 3, MSLRT = 0.60,  $p = 0.440$ ) and Dayton did not (Table 3, MSLRT = 0.60,  $p = 0.438$ ). For the ratio, although all three geographic populations showed increased variation at

28° compared to 22° (Table 3), Sapporo showed a relative stability (Table 3; MSLRT = 1.59,  $p = 0.208$ ) and 28°C (Table 3; MSLRT = 1.92,  $p = 0.166$ ). This might be explained by the fact that Sapporo did not show any difference in wing variation among temperatures (Table 3; MSLRT = 2.12,  $p = 0.347$ ). Dayton (Table 3; MSLRT<sub>16°vs22°</sub> = 4.80,  $p_{16°vs22°} = 0.028$ , MSLRT<sub>22°vs28°</sub> = 14.30,  $p_{22°vs28°} < 0.001$ ) showed decreased variation at extreme temperatures and Paris too although marginally (Table 3; MSLRT<sub>16°vs22°</sub> = 3.54,  $p_{16°vs22°} = 0.060$ , MSLRT<sub>22°vs28°</sub> = 4.79,  $p_{22°vs28°} = 0.029$ ).

**Table 3**

Coefficient of variation for each trait per population and temperature

		Sapporo	Dayton	Paris
Wing	16°	0.06	0.05*	0.04
	22°	0.05	0.08	0.07
	28°	0.06	0.04*	0.04*
Spot	16°	0.18	0.10*	0.12*
	22°	0.11*	0.12*	0.14*
	28°	0.20	0.28	0.31
Ratio	16°	0.15	0.09*	0.10*
	22°	0.11	0.09*	0.12*
	28°	0.19**	0.28	0.31

Note: \* represents a significant difference for a phenotype ( $\alpha = 0.05$ ), within a population, between the temperature presenting the largest coefficient of variation and the other two temperatures. \*\*: The ratio in the Sapporo population was significantly more variable at 28° than at 22° but not than 16°, which had medium variation (i. e. not significantly different from either 22° or 28°).

Measurement error was much lower than the FA detected for all the populations and traits, ranging from twice lower for wing size in Dayton at 28°C to near 200 times lower for spot size in Paris at 28°. No difference in FA was detected for either the wing or the spot sizes for laboratory samples ( $F_{\text{WING}; 2, 103} = 2.449$ ,  $p = 0.091$ ;  $F_{\text{SPOT}; 2, 103} = 1.166$ ,  $p = 0.316$ ) and for natural populations no difference in FA was found for any trait ( $F_{\text{WING}; 12, 165} = 0.942$ ,  $p = 0.507$ ;  $F_{\text{SPOT}; 12, 165} = 0.597$ ,  $p = 0.843$ ;  $F_{\text{RATIO}; 12, 165} = 0.803$ ,  $p = 0.647$ ). For the ratio, the populations at 28° showed more FA than the populations at

16° ( $F_{1,69} = 6.070$ ,  $p = 0.016$ ) but the differences between 22° and 16° ( $F_{1,62} = 2.069$ ,  $p = 0.155$ ) and 28° and 22° ( $F_{1,75} = 3.543$ ,  $p = 0.064$ ) were not significant.

No DA was detected for wing size. In contrast, significant DA was detected for both absolute and ratio, always in favor of the right side. For Paris and Dayton, DA was detected at 22 and 28°C while Sapporo only showed significant DA at 16°C. DA subtly increased with temperature for the ratio ( $r^2 = 0.06$ ,  $F_{2,97} = 3.323$ ,  $p = 0.040$ ) and this effect was different depending on the population ( $r^2_{\text{TEMP} \times \text{POP}} = 0.15$ ,  $F_{8,97} = 2.095$ ,  $p = 0.043$ ). In particular, native population showed a lower response to temperature than invasive populations (Figure 3d,  $d_{\text{SAPPORO-PARIS}} = 0.60$ ,  $d_{\text{SAPPORO-DAYTON}} = 0.49$ ,  $d_{\text{DAYTON-PARIS}} = 0.21$ ), although pairwise tests did not show significant differences in the slope of the relationship temperature-ratio asymmetry between Sapporo with either Paris ( $t_{1,65} = 0.765$ ,  $p = 0.447$ ) or Dayton ( $t_{1,68} = 1.268$ ,  $p = 0.209$ ).

Most of the natural populations showed similar asymmetry patterns: while no DA was detected for wing size, both the absolute spot size and the ratio exhibited right biased DAs (Figure 2). The exceptions are the Dayton population, which also showed DA for the wing size, Langfang, which did not show DA for either the wing or the spot size, and Paris, which only showed wing size DA. DA was not associated with temperature in any trait (Wing:  $F_{1,165} = 0.090$ ,  $p = 0.765$ ; absolute spot size ( $F_{1,165} = 0.488$ ,  $p = 0.486$ ); ratio ( $F_{1,165} = 0.143$ ,  $p = 0.706$ ); Figure 2).

## Discussion

Our results revealed the existence of a relatively large natural variation in wing and spot sizes and temperature may explain a substantial part of it. In contrast, the spot-to-wing ratio was quite stable in nature and very robust to developmental temperature in the lab. This stability might either reflect a tight structural connection between the development of the spot and that of the wing, imposing a strong correlation (i.e. constraint hypothesis), or a history of stabilizing selection on the relative spot size (i.e. adaptive hypothesis). All three populations exhibited an increase in relative spot size variation at 28°C, indicative of a lesser developmental robustness at high temperature, in agreement with the status of cold-adapted species of *D. suzukii* (Enriquez et al., 2018; Jakobs et al., 2015; Shearer et al., 2016; Stephens et al., 2015). This increased variation originating from a de-correlation of spot size and

wing size at 28°C suggests that the stability of the relative spot size is not an absolute structural constraint, and therefore points at the adaptive hypothesis. *D. sukuzii* males wing color pattern might thus be under stabilizing (sexual?) selection. Native and invasive populations showed very similar reaction norms, suggesting that spot plasticity is not affected by – and played no role in the success of – the invasion history. Relative spot size variability was higher in invasive populations compared to the native population, possibly pointing at a relaxed sexual selection during the invasion. Finally, both natural and laboratory samples exhibited a slight but significant DA of spot size (both absolute and relative), consistently in favor of the right side.

#### *Relative spot size robustness: selection or constraint?*

Although our experimental populations show a slight but significant decrease in the ratio at both high and low temperatures, the overall pattern reflects a global stability to developmental temperature, contrasting with both wing size and the absolute spot size that are both strongly plastic to temperature.

Such robustness might suggest either that spot size is fully determined by wing size, owing to the tight connection between wing development and the spot formation – an example of developmental constraint – or alternatively, that stabilizing selection is acting on *D. sukuzii* males color pattern, removing individuals with extreme relative spot sizes.

The male-limited presence of the wing spot in all species has been interpreted as a mark of sexual selection (Kopp and True 2002). The presence of a spot is indeed phylogenetically tightly associated with the occurrence of elaborate courtship behaviors, the males dancing in a stereotypic way in front of females and displaying their wings (Kopp and True, 2002; Revadi et al., 2015). Although the empirical evidence of an effect of the spot on mating success is scarce (Fuyama, 1979; Roy and Gleason, 2019), it is nevertheless conceivable that females choice might be influenced by the male wing phenotype. Sexual selection may have favored the stability of the relative spot size and reduced its plasticity, a common process (Fierst, 2013) although not universal (Price, 2006). This would suggest that the focal trait might not be the spot size itself, but rather its extent on the wing, i.e. the wing color pattern.



Alternatively, it is possible that spot size plasticity is simply a structural consequence of wing size plasticity to temperature, which has been suggested to be adaptive (Crill et al., 1996; David et al., 1997), and the fact that the boundaries of the expression of the genes involved in the spot formation vary according to the positional information of the veins (Arnoult et al., 2013; Gompel et al., 2005). Such developmental dependency of spot formation on wing development would thus impose a tight correlation between spot size and wing size, leading to a structurally stable spot relative size. This would thus be an example of an absolute constraint on the variation of the wing color pattern.

The analysis of the ratio variation within temperature provides an element in the discussion. It was indeed found that this variation increases at high temperature in the three populations (Figure 3c). This effect may indicate that hot temperatures might destabilize the processes involved in the spot formation, which is in agreement with the idea that *D. suzukii* is adapted to cold temperatures (Jakobs et al. 2015; Stephens et al. 2015; Shearer et al. 2016; Enriquez et al. 2018). The analysis of the covariation between wing size and spot size shows that they are tightly correlated. However, this correlation is lost at 28°C (Figure 3b), leading to the observed increase in variation of the ratio. This shows that the developmental link between wing and spot development can be disrupted (e.g. under hot temperature) suggesting that the stability of the spot relative size under colder (possibly optimal) temperatures might reflect more than a developmental constraint: i.e. might be maintained by stabilizing selection.

#### *No role for plasticity to temperature in the invasion*

Because plasticity may give a fitness advantage in early stages of invasion, populations repeatedly confronted to changing environments as invasive populations might present larger plastic responses. The hypothesis of adaptive plasticity in invasive populations (as opposed to native ones) has frequently appeared in the literature (Davidson et al., 2011; Lande, 2015; Lee and Gelembiuk, 2008; Richards et al., 2006; Yeh and Price, 2004). However, our results only show very small differences in wing size plasticity between invasive and native populations.

These results are consistent with previous studies on the invasion of *D. suzukii*. No difference in thermal plasticity of wing shape, activity rhythms, gene expression and ovipositor shape was detected (Fraimout et al., 2018; Plantamp et al., 2019; Varón-González et al., 2019). There is thus no

evidence that thermal plasticity might have contributed to the success of the invasion in this species. It is possible that *D. suzukii* might have been preadapted in its native range to the thermal conditions encountered throughout the invasion (Suarez and Tsutsui, 2008), reducing the importance of temperature as a selective agent, but leaving open the hypothesis that plasticity relative to other parameters might have played a role in the invasion success (Hamby et al., 2016).

### *Directional asymmetry: affected by heat stress and indicative of a lateralized sexual behavior?*

Both DA and FA have been suggested to increase under stress and have in turn been used as bioindicators of stressful environmental conditions (Graham et al., 1998; Klingenberg and Nijhout, 1999), but see Houle (1998) for a critical discussion). Our results, showing an increase of the spot DA at high temperature may be circumstantial but their congruence with independent suggestions about the adaptation of *D. suzukii* populations to cold temperature (Enriquez et al., 2018; Jakobs et al., 2015; Shearer et al., 2016; Stephens et al., 2015) might advise further exploration.

The systematic DA in favor of the right side for the spot size is surprising. The small magnitude of DA might be a consequence of a regular but non adaptive effect (Pélabon and Hansen, 2008). However, this consistent right-biased DA possibly points at a bias during courtship and mating that might be worth investigating, as suggested by QTL analyses linking behavior and wing pigmentation in *Drosophila elegans* and *Drosophila gunungcola* (Yeh and True, 2014). By altering a trait involved in a sexual behavior, stressful developmental conditions (temperature) might thus interfere with sexual selection.

## **Acknowledgements**

We would like to thank K. Tamura, M. Toda, P. Shearer, S. Fellous and T. Schlenke for their help during the fly sampling. We also thank M. Guillaume for her help with the fly stock maintenance and F. Peronnet for the rearing medium used. We thank Jennifer Gleason for her words on the reproduction of *Drosophila suzukii* and the potential role of directional asymmetry on it. CVG would like to thank Hacklab Almeria for their comments on the Python algorithm to estimate the wing and spot areas.

CVG and AF were funded by the Agence Nationale de la Recherche (ANR) under the project SWING (ANR-16-CE02-0015).

# **Data accessibility**

All data, R scripts and reports of R scripts can be found in Dryad.

# **Competing interests**

The authors declare no competing or financial interests.

# **Author contributions**

Conceptualization: VD and CVG. Flies collection: AF and VD. Experimentation: AF. Statistical analysis: CVG. Discussion and writing: CVG and VD.

# **Literature cited**

**Arnold, P. A., Nicotra, A. B. and Kruuk, L. E. B.** (2019). Sparse evidence for selection on phenotypic plasticity in response to temperature. *Philosophical Transactions of the Royal Society B: Biological Sciences* **374**, 20180185.

**Arnoult, L., Su, K. F. Y., Manoel, D., Minervino, C., Magriña, J., Gompel, N. and Prud'homme, B.** (2013). Emergence and Diversification of Fly Pigmentation Through Evolution of a Gene Regulatory Module. *Science* **339**, 1423.

**Atkinson, D.** (1994). Temperature and organism size - a biological law for ectotherms. *Advances in Ecological Research* **25**, 1–58.

**Bleu, J., Bessa-Gomes, C. and Laloi, D.** (2012). Evolution of female choosiness and mating frequency: effects of mating cost, density and sex ratio. *Animal Behaviour* **83**, 131–136.

**Bradski, G. and Kaehler, A.** (2000). OpenCV. *Dr. Dobb's journal of software tools* **25**, 120–125.

**Candolin, U. and Heuschele, J.** (2008). Is sexual selection beneficial during adaptation to environmental change? *Trends in Ecology & Evolution* **23**, 446–452.

**Chown Steven L, Slabber Sarette, McGeoch Melodie A, Janion Charlene and Leinaas Hans Petter** (2007). Phenotypic plasticity mediates climate change responses among invasive and

- indigenous arthropods. *Proceedings of the Royal Society B: Biological Sciences* **274**, 2531–2537.
- Clemente, M., Fusco, G., Tonina, L. and Giomi, F.** (2018). Temperature-induced phenotypic plasticity in the ovipositor of the invasive species *Drosophila suzukii*. *Journal of Thermal Biology* **75**, 62–68.
- Crill, W. D., Huey, R. B. and Gilchrist, G. W.** (1996). Within-and between-generation effects of temperature on the morphology and physiology of *Drosophila melanogaster*. *Evolution* **50**, 1205–1218.
- David, J. R., Gibert, P., Gravot, E., Petavy, G., Morin, J.-P., Karan, D. and Moreteau, B.** (1997). Phenotypic plasticity and developmental temperature in *Drosophila*: Analysis and significance of reaction norms of morphometrical traits. *Journal of Thermal Biology* **22**, 441–451.
- Davidson, A. M., Jennions, M. and Nicotra, A. B.** (2011). Do invasive species show higher phenotypic plasticity than native species and, if so, is it adaptive? A meta-analysis. *Ecology Letters* **14**, 419–431.
- Debat, V. and David, P.** (2001). Mapping phenotypes: canalization, plasticity and developmental stability. *TRENDS in Ecology & Evolution* **16**, 555–561.
- Debat, V., Debelle, A. and Dworkin, I.** (2009). Plasticity, canalization, and developmental stability of the *Drosophila* wing: joint effects of mutations and developmental temperature. *Evolution* **63**, 2864–2876.
- Enriquez, T., Renault, D., Charrier, M. and Colinet, H.** (2018). Cold Acclimation Favors Metabolic Stability in *Drosophila suzukii*. *Frontiers in Physiology* **9**, 1506.
- Fierst, J. L.** (2013). Female mating preferences determine system-level evolution in a gene network model. *Genetica* **141**, 157–170.
- Fox Rebecca J., Donelson Jennifer M., Schunter Celia, Ravasi Timothy and Gaitán-Espitia Juan D.** (2019). Beyond buying time: the role of plasticity in phenotypic adaptation to rapid environmental change. *Philosophical Transactions of the Royal Society B: Biological Sciences* **374**, 20180174.
- Fraimout, A., Debat, V., Fellous, S., Hufbauer, R. A., Foucaud, J., Pudlo, P., Marin, J.-M., Price, D. K., Cattell, J., Chen, X., et al.** (2017). Deciphering the Routes of invasion of *Drosophila suzukii* by Means of ABC Random Forest. *Molecular Biology and Evolution* **34**, 980–996.
- Fraimout, A., Jacquemart, P., Villarroel, B., Aponte, D. J., Decamps, T., Herrel, A., Cornette, R. and Debat, V.** (2018). Phenotypic plasticity of *Drosophila suzukii* wing to developmental temperature: implications for flight. *Journal of Experimental Biology* **221**, jeb166868.
- Fuyama, Y.** (1979). A visual stimulus in the courtship of *Drosophila suzukii*. *Experientia* **35**, 1327–1328.
- Geng, Y.-P., Pan, X.-Y., Xu, C.-Y., Zhang, W.-J., Li, B., Chen, J.-K., Lu, B.-R. and Song, Z.-P.** (2007). Phenotypic plasticity rather than locally adapted ecotypes allows the invasive alligator weed to colonize a wide range of habitats. *Biological Invasions* **9**, 245–256.

- 462 **Geng, Y., van Klinken, R. D., Sosa, A., Li, B., Chen, J. and Xu, C.-Y.** (2016). The relative importance of  
463 genetic diversity and phenotypic plasticity in determining invasion success of a clonal weed in  
464 the USA and China. *Frontiers in Plant Sciences* **7**, 2113.
- 465 **Gibert, P., Moreteau, B., Moreteau, J.-C. and David, J. R.** (1996). Growth temperature and adult  
466 pigmentation in two *Drosophila* sibling species: an adaptive convergence of reaction norms  
467 in sympatric populations? *Evolution* **50**, 2346–2353.
- 468 **Gibert, J.-M., Peronnet, F. and Schlötterer, C.** (2007). Phenotypic plasticity in *Drosophila*  
469 pigmentation caused by temperature sensitivity of a chromatin regulator network. *PLoS*  
470 *genetics* **3**, e30.
- 471 **Gibert, P., Hill, M., Pascual, M., Plantamp, C., Terblanche, J. S., Yassin, A. and Sgrò, C. M.** (2016).  
472 *Drosophila* as models to understand the adaptive process during invasion. *Biological*  
473 *Invasions* **18**, 1089–1103.
- 474 **Gompel, N., Prud'homme, B., Wittkopp, P. J., Kassner, V. A. and Carroll, S. B.** (2005). Chance caught  
475 on the wing: cis-regulatory evolution and the origin of pigment patterns in *Drosophila*.  
476 *Nature* **433**, 481.
- 477 **Graham, M. H.** (2003). Confronting multicollinearity in ecological multiple regression. *Ecology* **84**,  
478 2809–2815.
- 479 **Graham, J. H., Emlen, J. M., Freeman, D. C., Leamy, L. J. and Kieser, J. A.** (1998). Directional  
480 asymmetry and the measurement of developmental instability. *Biological Journal of the*  
481 *Linnean Society* **64**, 1–16.
- 482 **Greenfield, M. D. and Rodriguez, R. L.** (2004). Genotype–environment interaction and the reliability  
483 of mating signals. *Animal Behaviour* **68**, 1461–1468.
- 484 **Hamby, K. A., E. Bellamy, D., Chiu, J. C., Lee, J. C., Walton, V. M., Wiman, N. G., York, R. M. and**  
485 **Biondi, A.** (2016). Biotic and abiotic factors impacting development, behavior, phenology,  
486 and reproductive biology of *Drosophila suzukii*. *Journal of Pest Science* **89**, 605–619.
- 487 **Houle, D.** (1998). High enthusiasm and low R-squared. *Evolution* **52**, 1872–1876.
- 488 **Jakobs, R., Garipey, T. D. and Sinclair, B. J.** (2015). Adult plasticity of cold tolerance in a continental-  
489 temperate population of *Drosophila suzukii*. *Journal of Insect Physiology* **79**, 1–9.
- 490 **Klingenberg, C. P. and Nijhout, H. F.** (1999). Genetics of fluctuating asymmetry: A developmental  
491 model of developmental instability. *Evolution* **53**, 358–375.
- 492 **Kopp, A. and True, J. R.** (2002). Evolution of male sexual characters in the oriental *Drosophila*  
493 *melanogaster* species group. *Evolution & development* **4**, 278–291.
- 494 **Krishnamoorthy, K. and Lee, M.** (2014). Improved tests for the equality of normal coefficients of  
495 variation. *Computational Statistics* **29**, 215–232.
- 496 **Lahti, D. C., Johnson, N. A., Ajie, B. C., Otto, S. P., Hendry, A. P., Blumstein, D. T., Coss, R. G.,**  
497 **Donohue, K. and Foster, S. A.** (2009). Relaxed selection in the wild. *Trends in Ecology &*  
498 *Evolution* **24**, 487–496.

- 499 **Lande, R.** (2015). Evolution of phenotypic plasticity in colonizing species. *Molecular Ecology* **24**,  
500 2038–2045.
- 501 **Lee, C. E. and Gelembiuk, G. W.** (2008). Evolutionary origins of invasive populations. *Evolutionary*  
502 *Applications* **1**, 427–448.
- 503 **Marshall, D. J., Bonduriansky, R. and Bussière, L. F.** (2008). OFFSPRING SIZE VARIATION WITHIN  
504 BROODS AS A BET-HEDGING STRATEGY IN UNPREDICTABLE ENVIRONMENTS. *Ecology* **89**,  
505 2506–2517.
- 506 **Mead, L. S. and Arnold, S. J.** (2004). Quantitative genetic models of sexual selection. *Trends in*  
507 *Ecology & Evolution* **19**, 264–271.
- 508 **Møller, A. P. and Alatalo, R. V.** (1999). Good-genes effects in sexual selection. *Proceedings of the*  
509 *Royal Society of London. Series B: Biological Sciences* **266**, 85–91.
- 510 **Nieberding, C. M., San Martin, G., Saenko, S., Allen, C. E., Brakefield, P. M. and Visser, B.** (2018).  
511 Sexual selection contributes to partial restoration of phenotypic robustness in a butterfly.  
512 *Scientific Reports* **8**, 14315.
- 513 **Pélabon, C. and Hansen, T. F.** (2008). On the adaptive accuracy of directional asymmetry in insect  
514 wing size. *Evolution* **62**, 2855–2867.
- 515 **Pigliucci, M.** (2005). Evolution of phenotypic plasticity: where are we going now? *TRENDS in Ecology*  
516 *and Evolution* **20**, 481–486.
- 517 **Plantamp, C., Henri, H., Andrieux, T., Régis, C., Mialdea, G., Dray, S., Gibert, P. and Desouhant, E.**  
518 (2019). Phenotypic plasticity in the invasive pest *Drosophila suzukii*: activity  
519 rhythms and gene expression in response to temperature. *J. Exp. Biol.* **222**, jeb199398.
- 520 **Price, T. D.** (2006). Phenotypic plasticity, sexual selection and the evolution of colour patterns. *J. Exp.*  
521 *Biol.* **209**, 2368.
- 522 **Rasband, W. S.** (2012). ImageJ: Image processing and analysis in Java. *Astrophysics Source Code*  
523 *Library*.
- 524 **Revadi, S., Lebreton, S., Witzgall, P., Anfora, G., Dekker, T. and Becher, G. P.** (2015). Sexual Behavior  
525 of *Drosophila suzukii*. *Insects* **6**,.
- 526 **Richards, C. L., Bossdorf, O., Muth, N. Z., Gurevitch, J. and Pigliucci, M.** (2006). Jack of all trades,  
527 master of some? On the role of phenotypic plasticity in plant invasions. *Ecology Letters* **9**,  
528 981–993.
- 529 **Rosenthal, R., Cooper, H. and Hedges, L.** (1994). Parametric measures of effect size. *The handbook of*  
530 *research synthesis* **621**, 231–244.
- 531 **Rowe, L. and Houle, D.** (1996). The lek paradox and the capture of genetic variance by condition  
532 dependent traits. *Proceedings of the Royal Society of London. Series B: Biological Sciences*  
533 **263**, 1415–1421.
- 534 **Roy, P. R. and Gleason, J. M.** (2019). Assessing the use of wing ornamentation and visual display in  
535 female choice sexual selection. *Behavioural Processes* **158**, 89–96.

- 536 **Shearer, P. W., West, J. D., Walton, V. M., Brown, P. H., Svetec, N. and Chiu, J. C.** (2016). Seasonal  
537 cues induce phenotypic plasticity of *Drosophila suzukii* to enhance winter survival. *BMC*  
538 *ecology* **16**, 11.
- 539 **Stephens, A. R., Hutchison, W. D., Asplen, M. K. and Venette, R. C.** (2015). Cold Hardiness of Winter-  
540 Acclimated *Drosophila suzukii* (Diptera: Drosophilidae) Adults. *Environmental Entomology* **44**,  
541 1619–1626.
- 542 **Suarez, A. P. and Tsutsui, N. D.** (2008). The evolutionary consequences of biological invasions.  
543 *Molecular Ecology* **17**, 351–360.
- 544 **Travis, J. M. J., Mustin, K., Benton, T. G. and Dytham, C.** (2009). Accelerating invasion rates result  
545 from the evolution of density-dependent dispersal. *Journal of Theoretical Biology* **259**, 151–  
546 158.
- 547 **Varón-González, C., Fraimout, A., Delapré, A., Debat, V. and Cornette, R.** (2019). Limited thermal  
548 plasticity and geographic divergence in the ovipositor of *Drosophila suzukii*.  
549 *bioRxiv* 670356.
- 550 **West-Eberhard, M. J.** (1989). Developmental plasticity and the origins of diversity. *Annual Review in*  
551 *Ecology and Systematics* **20**, 249–278.
- 552 **Wiernasz, D. C.** (1989). Female choice and sexual selection of male wing melanin pattern in *Pieris*  
553 *occidentalis* (Lepidoptera). *Evolution* **43**, 1672–1682.
- 554 **Yeh, P. J. and Price, T. D.** (2004). Adaptive Phenotypic Plasticity and the Successful Colonization of a  
555 Novel Environment. *The American Naturalist* **164**, 531–542.
- 556 **Yeh, S.-D. and True, J. R.** (2014). The Genetic Architecture of Coordinately Evolving Male Wing  
557 Pigmentation and Courtship Behavior in *Drosophila elegans* and *Drosophila*  
558 *gunungcola*. *G3: Genes/Genomes/Genetics* **4**, 2079.