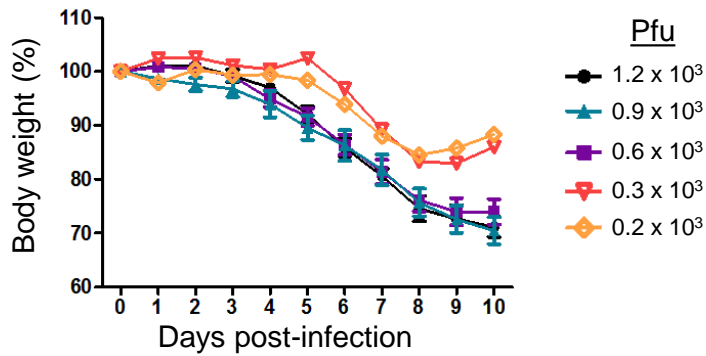
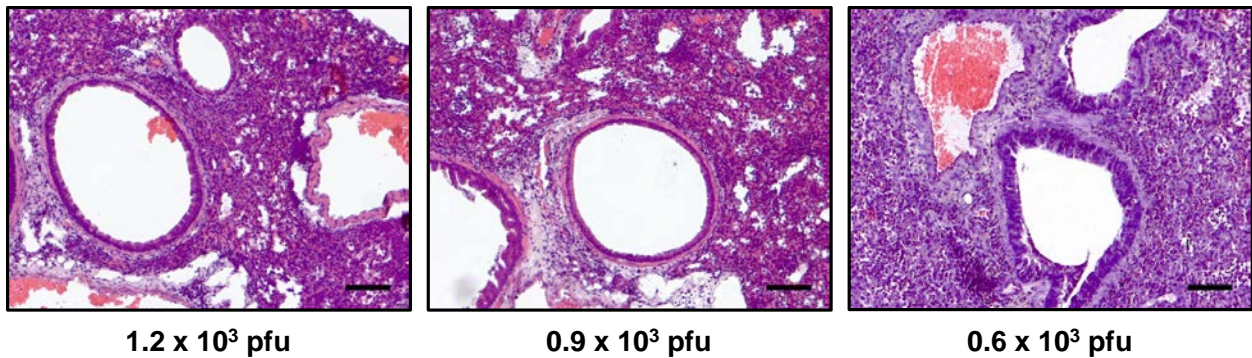


Supplemental Figure 1. (A) Body weight changes are measured (as % original, Day 0) during the 10 day period after infection with different doses of infectious virus. (B) Peribronchiolar H&E-stained lung sections from mice infected with influenza virus at the given dilutions, sacrificed on Day 10. Yellow arrows indicate zones of tissue that are completely filled with inflammatory cells. (C, left) Cd concentration in mouse and human lung tissues (NS, non-smokers; S, smokers). (C, right) Changes in body mass after infection.

A



B



C

